

EXIT STAIR DOOR REVISIONS CITY-COUNTY BUILDING 210 MARTIN LUTHER KING, JR. BLVD. MADISON, WISCONSIN

INDEX OF DRAWINGS

GENERAL

G1.0 COVER SHEET AND INDEX OF DRAWINGS

ARCHITECTURAL

- A2.GA GARAGE FLOOR PLAN
- A2.0 GROUND FLOOR PLAN
- A2.1 FIRST FLOOR PLAN
- A2.2 SECOND FLOOR PLAN
- A2.3 THIRD FLOOR PLAN
- A2.4 FOURTH FLOOR PLAN
- A2.5 FIFTH FLOOR PLAN

ELECTRICAL

- E1.0 DETAILS
- E2.0 RISER DIAGRAM
- E3.0 PHOTOS



MADISON, WISCONSIN



FUTURE PROJECT WILL CONNECT STAIR DOOR TO FIRE COMMAND CENTER OR PROVIDE FREE ACCESS AT STAIR DOOR AND CONNECT WEST VESTIBULE DOOR TO THE FIRE COMMAND CENTER TO ALLOW ACCESS TO THE GARAGE IN AN EMERGENCY SITUATION

STAIR
G
6-GA

STAIR
E
3-GA

STAIR
F
F-GA

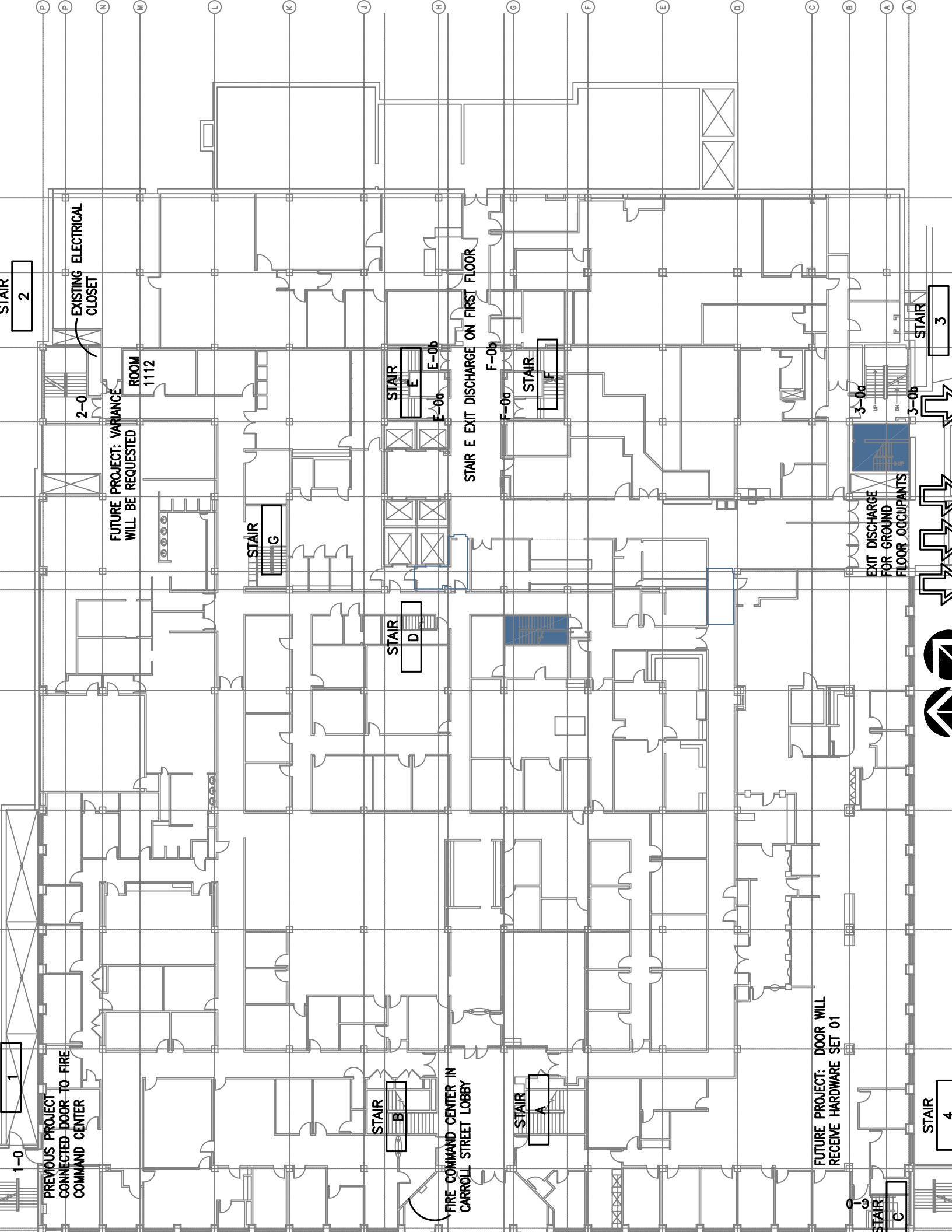
3-GA

STAIR
3

STAIR
4

<70' MAX DEAD END CORRIDOR

<70' MAX DEAD END CORRIDOR



STAIR 2

EXISTING ELECTRICAL CLOSET

ROOM 1112

FUTURE PROJECT: VARIANCE WILL BE REQUESTED

STAIR G

STAIR E

STAIR D

FIRE COMMAND CENTER IN CARROLL STREET LOBBY

STAIR A

STAIR E EXIT DISCHARGE ON FIRST FLOOR

STAIR F

FUTURE PROJECT: DOOR WILL RECEIVE HARDWARE SET 01

EXIT DISCHARGE FOR GROUND FLOOR OCCUPANTS

STAIR 4

STAIR 3





FUTURE PROJECT: VARIANCE
WILL BE REQUESTED

DOOR 1003b TO RECEIVE
HARDWARE SET 01

DOOR 3-1 TO BE MODIFIED
TO HAVE ACCESS BY OWNER

STAIR
2

STAIR
E

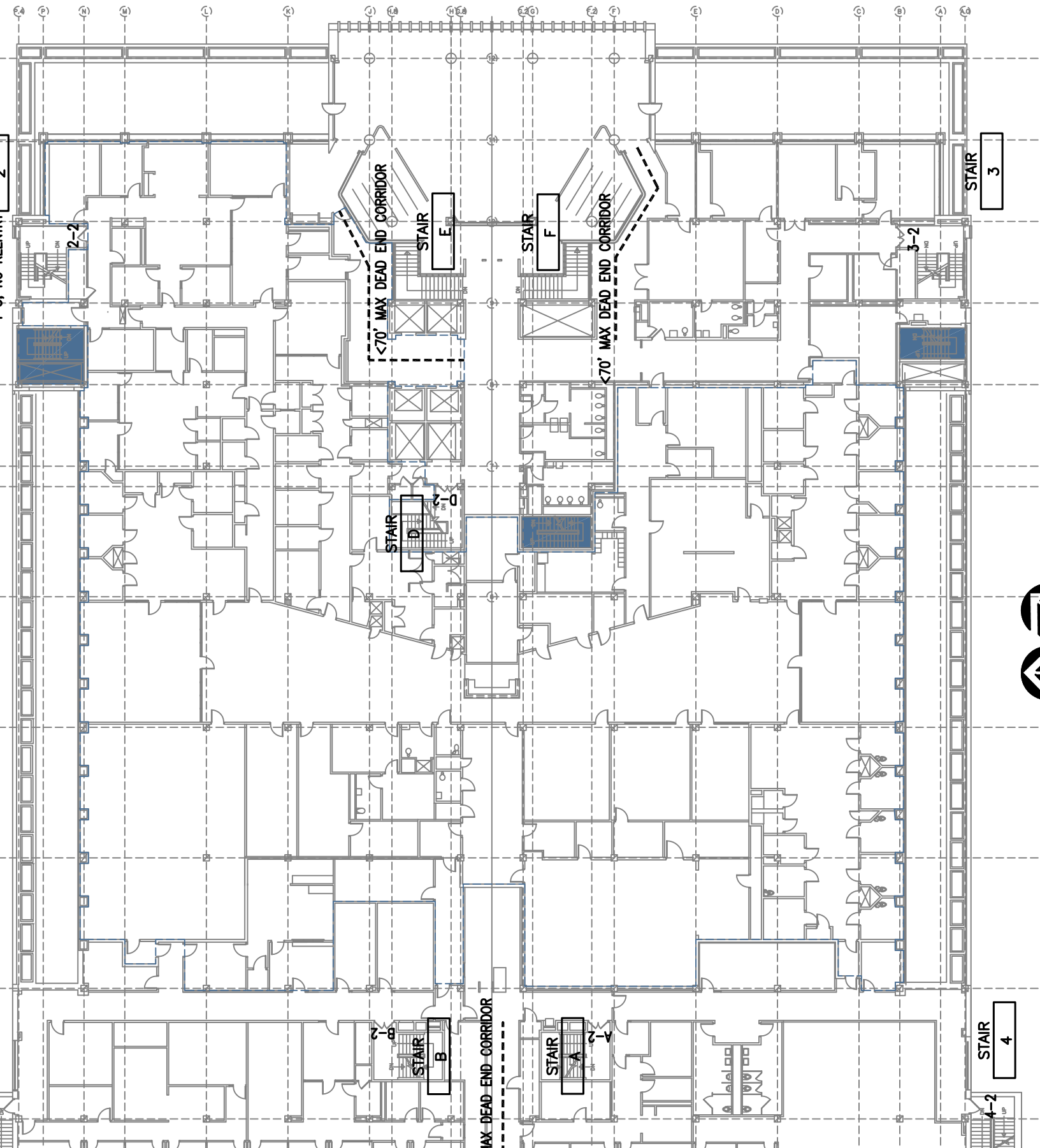
STAIR
F

STAIR
3

STAIR
D

FIRE

STAIR



STAIR 3

STAIR 4

<70' MAX DEAD END CORRIDOR

<70' MAX DEAD END CORRIDOR

MAX DEAD END CORRIDOR

2-2

3-2

4-2

2-D

3-D



EGRESS ROUTE IS
PASSAGE TO STAIR 1
OPTION TO ENCLOSE
SUITE

<50' MAX DEAD END CORRIDOR
IF BOTH WINGS ENCLOSED AS SUITES IN FUTURE

EGRESS ROUTE IS
PASSAGE TO STAIR 4
OPTION TO ENCLOSE
SUITE

DOOR TO RECEIVE
HARDWARE SET 01

DOOR TO RECEIVE
HARDWARE SET 01

FUTURE EGRESS ROUTE

STAIR
3

STAIR
4

STAIR
D

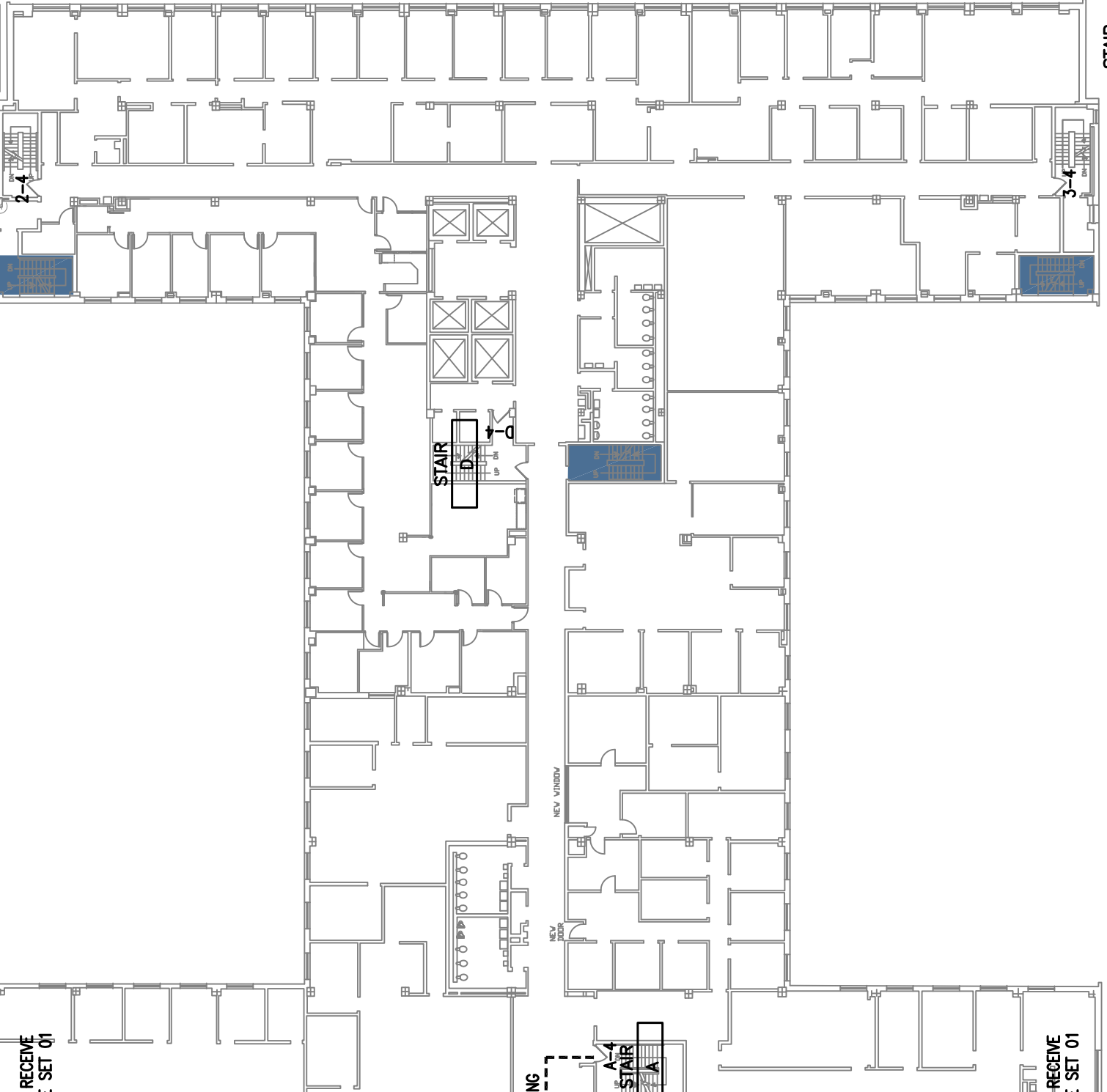
STAIR
B

STAIR
A

2-3

3-3

4-3



STAIR
3

STAIR
4



FOURTH FLOOR PLAN



2

STAIR 3

DOOR TO RECEIVE
HARDWARE SET 01

STAIR
D

0-50
UP

<70' MAX EXISTING

A-5
STAIR
A

DOOR TO RECEIVE
HARDWARE SET 01

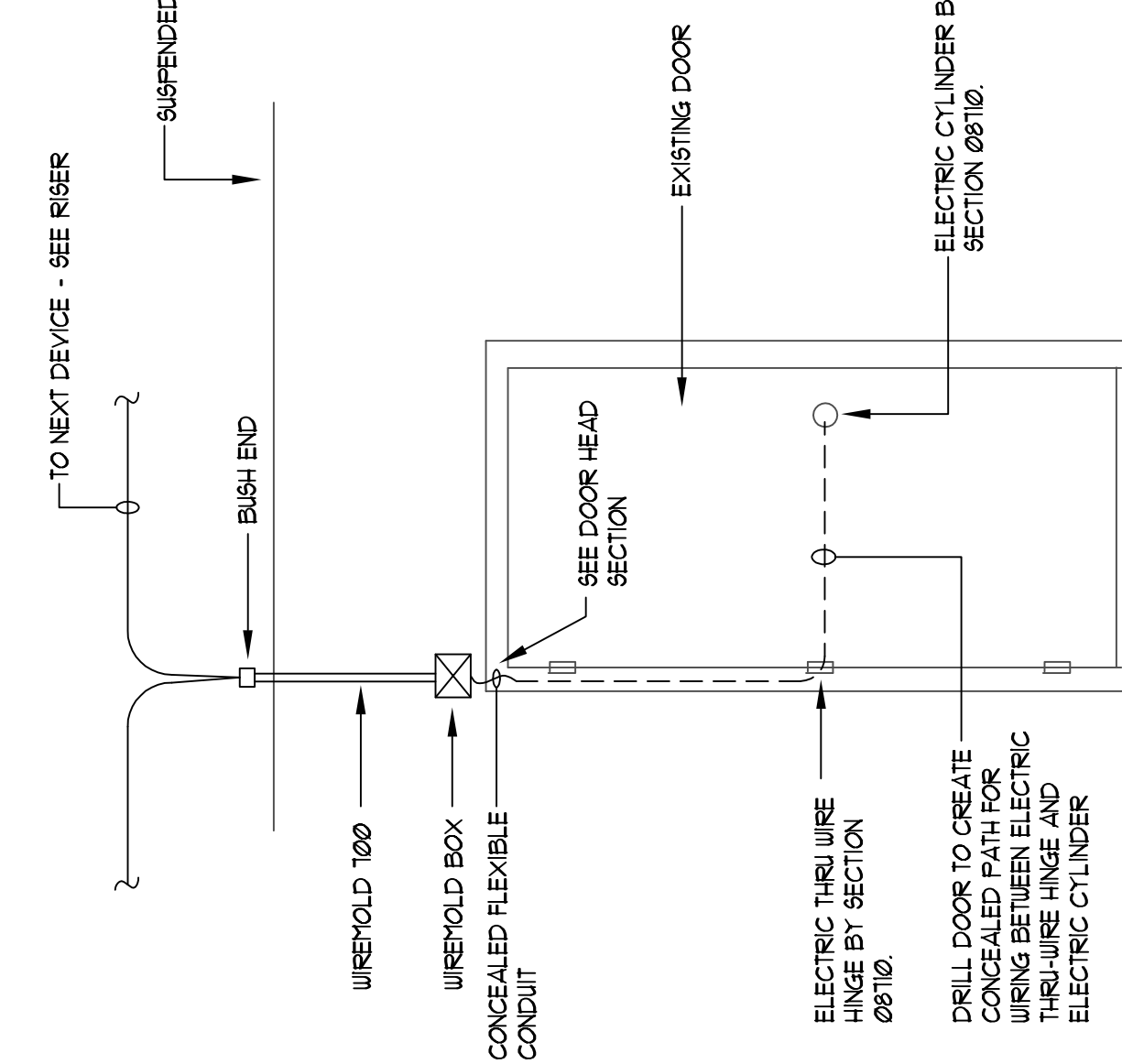
STAIR 4

1-5

4-5

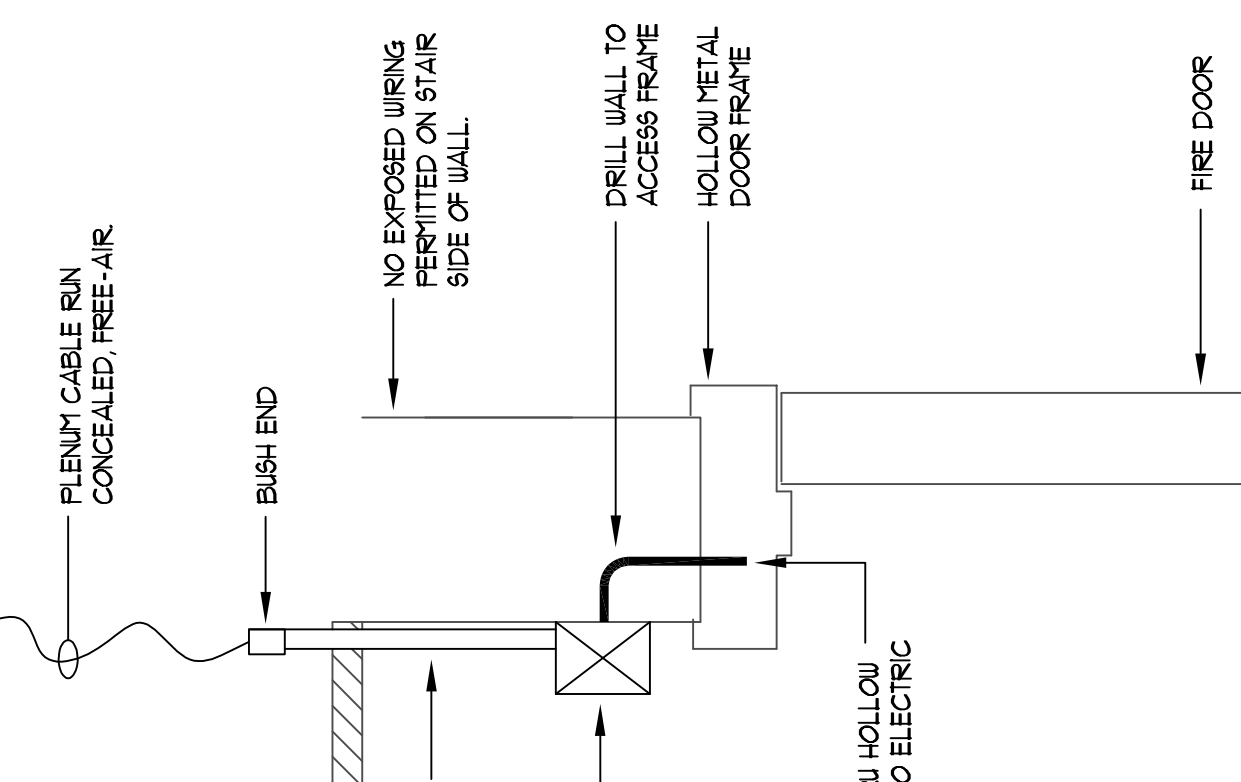
2-5

3-5



DOOR WIRING DETAIL

NOT TO SCALE



DOOR HEAD SECTION

NOT TO SCALE

CENTER - 1ST FLOOR LOBBY AT CARROLL STREET

NEW POWER SUPPLY - PROVIDE ALTRONIX SMTPTM
 INSTALL IN ELECTRICAL CLOSET ACROSS FROM ROOM
 WIRE IN PARALLEL WITH EXISTING STAIRWELL LOCK
 SUPPLY LOCATED IN SAME ROOM.

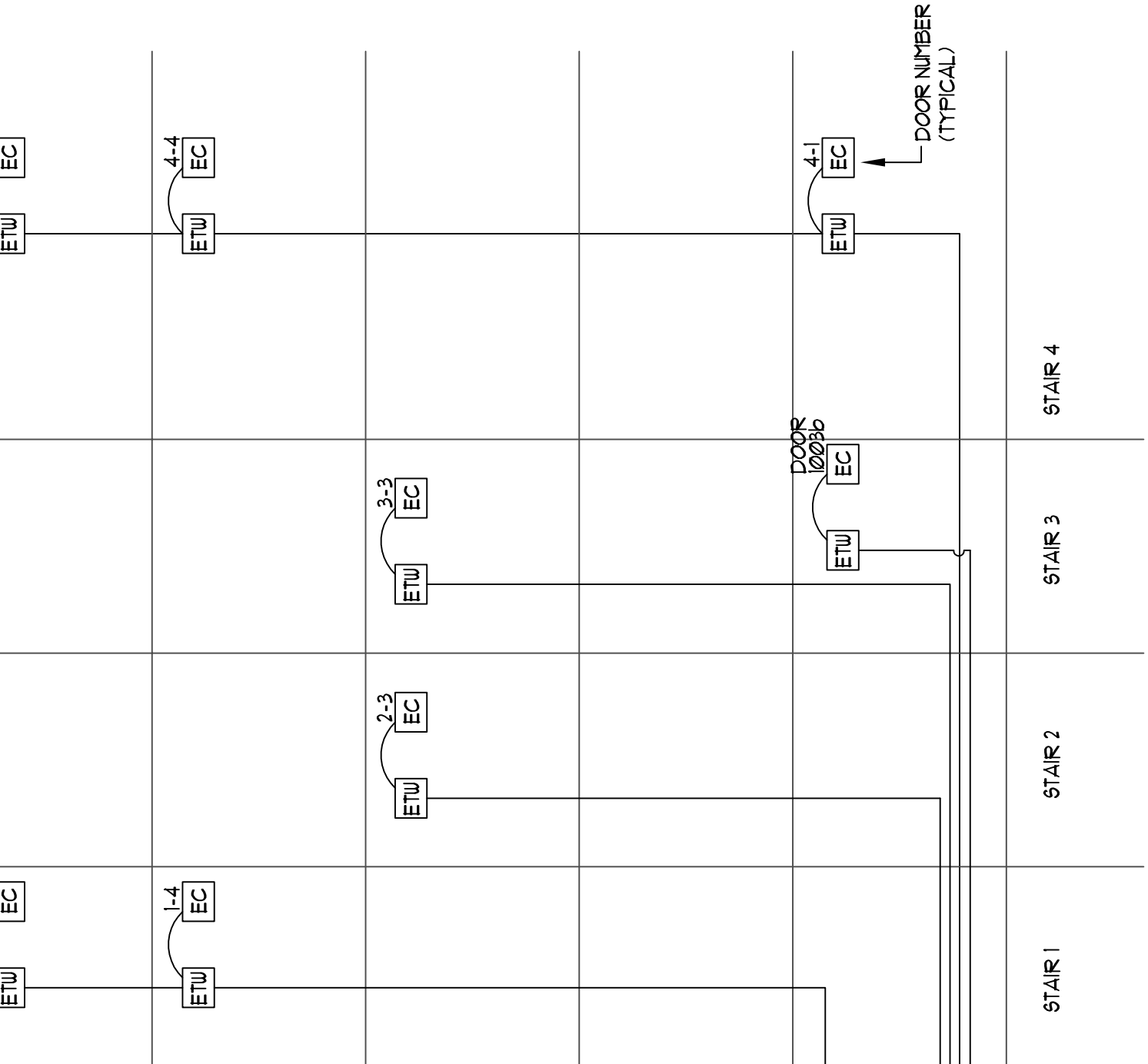
ELECTRIC THRU-WIRE HINGE. FURNISHED BY HARDWARE
 SECTION.

ELECTRIC CYLINDER FURNISHED BY HARDWARE SECTION

NEW SUPERVISION ALARM - PROVIDE SAFETY TECHNI
 INTERNATIONAL STI-5000-R ALARM WITH 9VDC BATT
 WIRE TO AC FAIL SUPERVISION FORM C CONTACT IN
 POWER SUPPLY. INSTALL OUTSIDE CLOSET. PROVIDE
 'STAIRWELL DOORS NOT SECURE.'

NOTES:

1. ALL LOW VOLTAGE CABLE TO BE 18/2 PLENUM R/JN
 CONCEALED OR IN WIREMOLD. SEE DOOR DETAILS.
 SECTION 16.111.
2. DO NOT ROUTE WIRING IN STAIRS.
3. SEE ARCHITECTURAL PLANS FOR LOCATIONS OF DOOR
 FIRE COMMAND CENTER.
4. 120 VAC WIRING TO BE 3#12, 1/2" C.
5. ROUTING OF WIRING MUST BE REVIEWED WITH AND APPROVED
 BY DANE COUNTY ELECTRICIAN.



WIRING DIAGRAM - DOOR RELEASE SYSTEM

CONTAINS SWITCH TO RELEASE DOORS



PHOTO: FIRE COMMAND CENTER

NOT TO SCALE

WALL CONSTRUCTION IS PLASTER OVER MASONRY.



CAL DOOR