

BASE BID - REMOVE CURB ON EAST SIDE OF BUILDING AND EAST HALF OF FRONT LOT

- 1 REMOVE EXISTING ASPHALT
- 2 FINE GRADE THE EXISTING BASE AND ADD UP TO 200 TON OF BASE MATERIAL
- 3 PAVE 2.5" ASPHALT BINDER COURSE TYPE E-1 19mm MIX
- 4 PAVE 1.5" ASPHALT SURFACE COURSE TYPE E-1 12.5mm MIX

ALTERNATE BID 1 - REPAVE FRONT LOT

- 1 REMOVE EXISTING ASPHALT
- 2 FINE GRADE THE EXISTING BASE AND ADD UP TO 80 TON OF BASE MATERIAL
- 3 PAVE 2.5" ASPHALT BINDER COURSE TYPE E-1 19mm MIX
- 4 PAVE 1.5" ASPHALT SURFACE COURSE TYPE E-1 12.5mm MIX

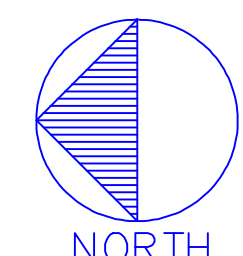
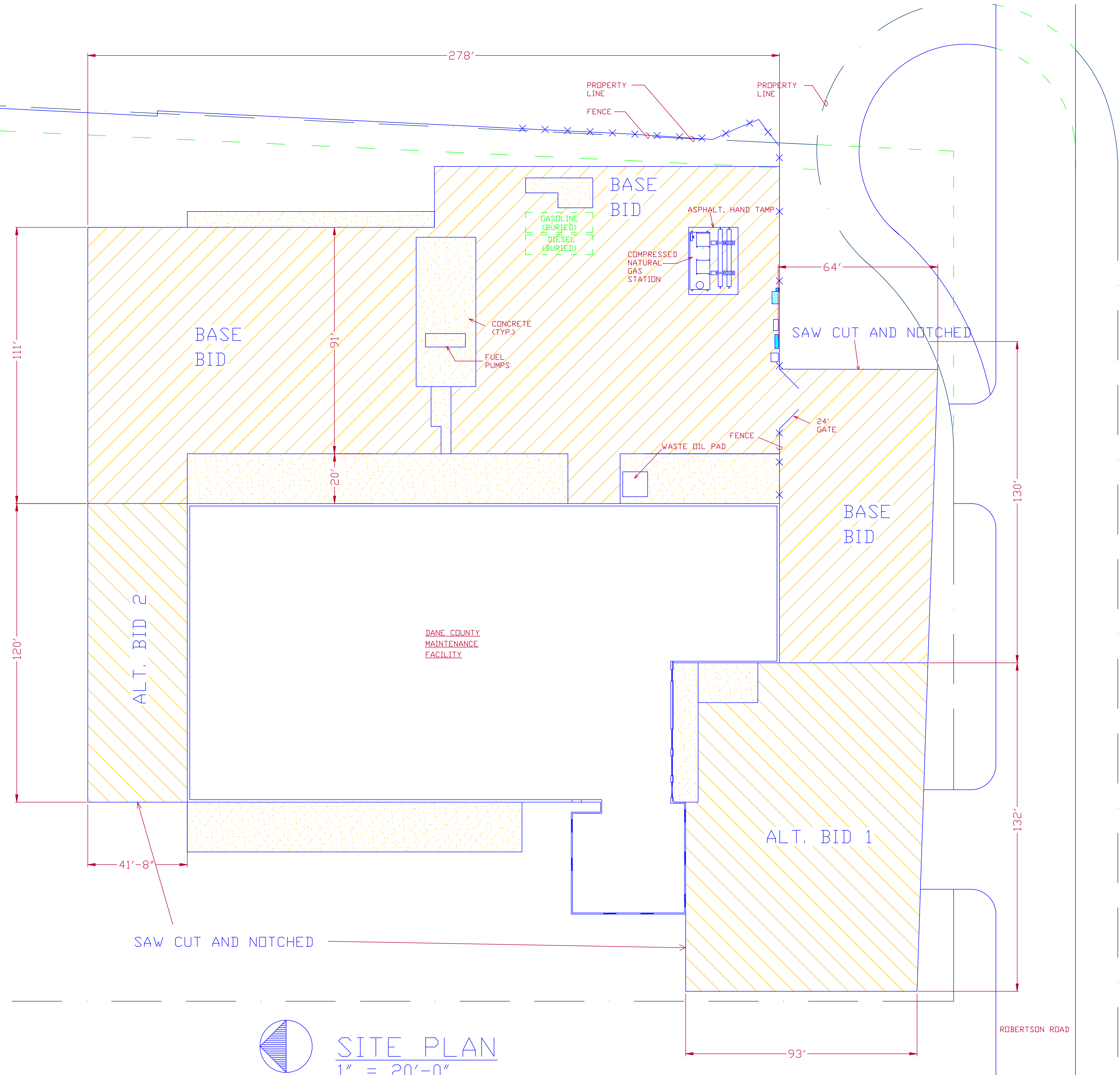
ALTERNATE BID 2 - REPAVE AREA ON NORTH SIDE OF BUILDING

- 1 REMOVE EXISTING ASPHALT
- 2 FINE GRADE THE EXISTING BASE AND ADD UP TO 40 TON OF BASE MATERIAL
- 3 PAVE 2.5" ASPHALT BINDER COURSE TYPE E-1 19mm MIX
- 4 PAVE 1.5" ASPHALT SURFACE COURSE TYPE E-1 12.5mm MIX

***FIELD VERIFY ALL DIMENSIONS

NOTES:

- ALL DIMENSIONS ARE APPROXIMATE-FIELD VERIFY
- X
- X
- X
- X



SITE PLAN
1" = 20'-0"

| | | |
|----------------|-------------------|-----------------|
| Revisions | Approved By: RJN | Scale: AS NOTED |
| Drawn By: JRL | Date: 8/14/2012 | |
| Design By: TPS | Proj. No.: 312025 | |

DEPARTMENT OF PUBLIC WORKS
DANE COUNTY WISCONSIN

ASPHALT DRIVEWAY
DANE COUNTY MAINTENANCE BLDG.
4318 ROBERTSON ROAD
MADISON, WISCONSIN

Sheet 1 of 1