



Residuals Management
 Consultants in Waste Management, Industrial Hygiene, Environmental Control
 1406 E. Washington Ave., Ste. 124
 Madison, WI 53703
 608/255-2134

PROJECT :

DANE COUNTY
 LANDFILL
 CITY OF MADISON/
 RODEFELD SITE
 PLAN OF
 OPERATION

NO.	DESCRIPTION	BY	DATE

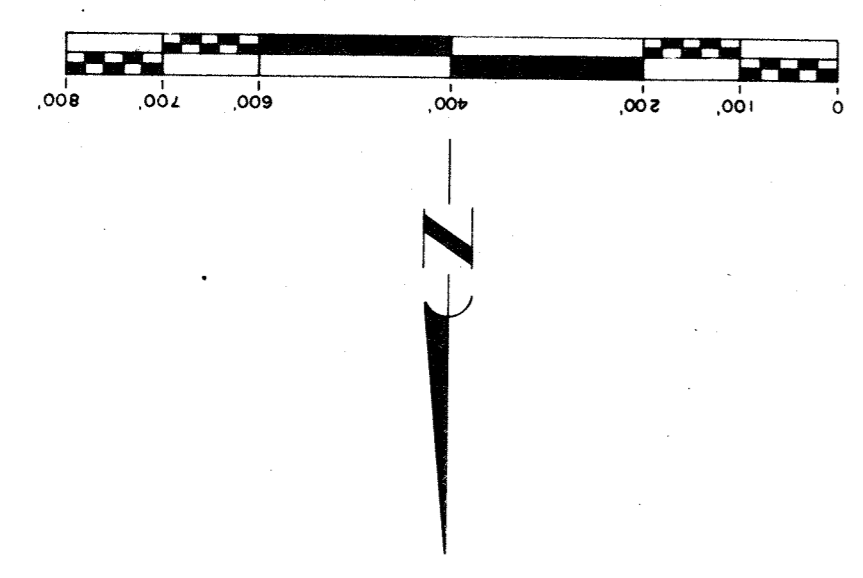
REVISIONS :

DRAWN: JMM DATE: 9/21/83
 CHECKED: MWS DATE: 2/15/84
 APPROVED: PK DATE: 2/15/84
 DATE PRINTED:

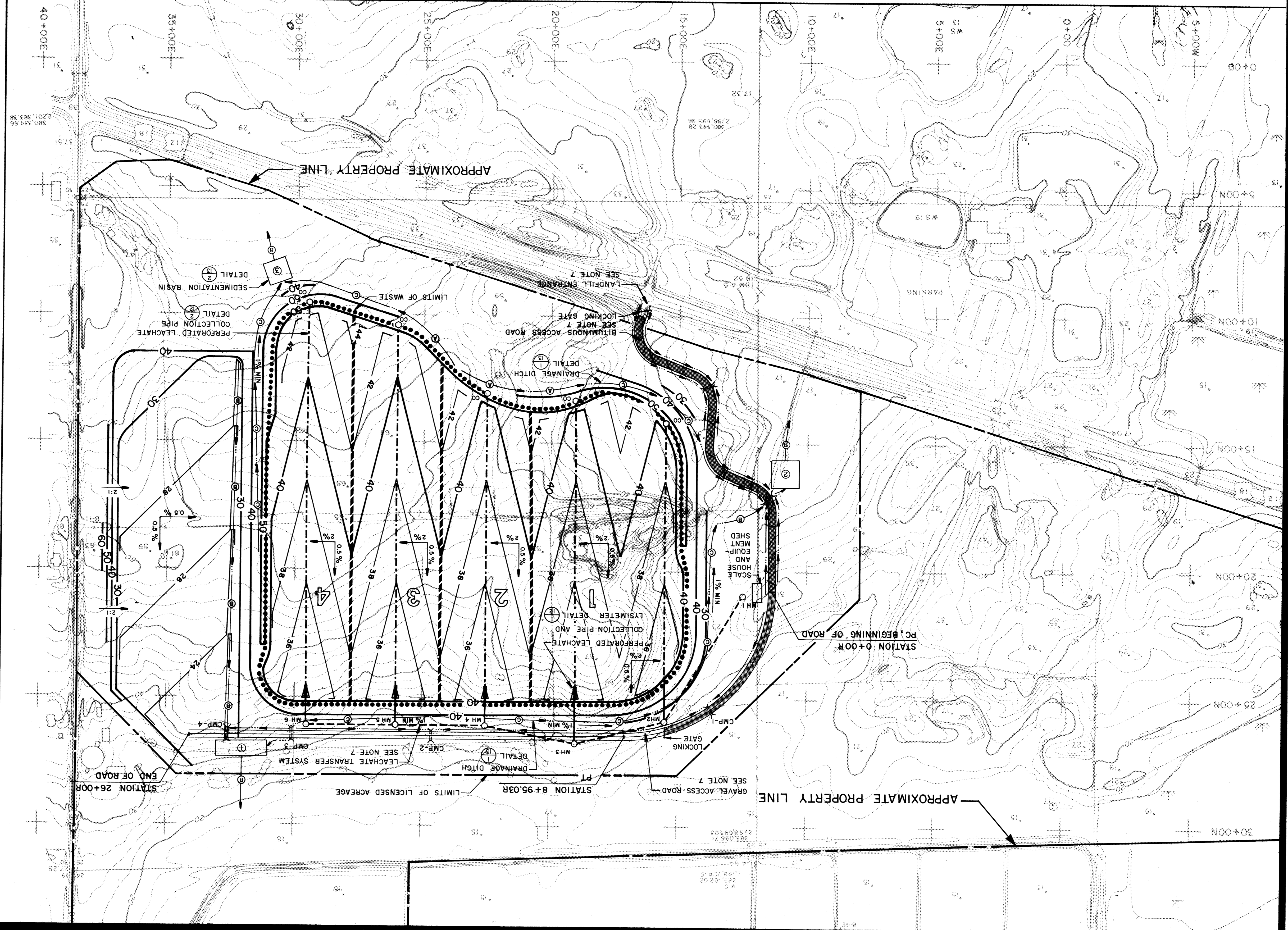
SHEET TITLE :
 ENGINEERING
 MODIFICATIONS
 PLAN

SCALE : 1" = 200'

PROJECT NO. : 2037
ELEMENT NO. : 8300
SHEET 4 OF 14



- LEGEND**
- LIMITS OF WASTE
 - BOUNDARY OF PROPOSED LICENSED ACREAGE
 - 10 FOOT CONTOUR (ENGINEERING MODIFICATIONS)
 - 2 FOOT CONTOUR (ENGINEERING MODIFICATIONS)
 - MH-5 MANHOLE
 - DRAINAGE DITCH DETAIL (1/2")
 - CORRUGATED METAL PIPE CULVERT (CMP)
 - GRAVEL ACCESS ROAD
 - BITUMINOUS ACCESS ROAD
 - DIRECTION AND SLOPE
 - PERFORATED DETAIL LEACHATE COLLECTION PIPE
 - PERFORATED LEACHATE COLLECTION PIPE AND LSI-METER DETAIL (1/2")
 - LEACHATE TRANSFER SYSTEM (PLAN SHEET 11)
 - 50' CLEANOUT RISER ACCESS DETAIL
 - LIMITS OF PHASE
 - ③ SEDIMENTATION BASIN AND NUMBER
 - MLH-1 LEACHATE HEAD MONITORING WELL
 - APPROXIMATE PROPERTY LINE (DELINEATES APPROXIMATE BOUNDARY OF THE CITY OF MADISON AND RODEFELD PROPERTIES)



- NOTES:**
1. BASE MAP WAS COMPILED FROM TOPOGRAPHIC MAPS OBTAINED FROM THE CITY OF MADISON ENGINEERING DIVISION. THE MAPS WERE COMPILED PHOTOGRAMMETRICALLY FROM APRIL 1972 PHOTOGRAPHY.
 2. CONTOUR INTERVAL IS TWO FEET.
 3. ELEVATIONS REFERENCED TO CITY OF MADISON DATUM. 0.00 FEET CITY OF MADISON DATUM EQUALS 645.60 FEET USGS MEAN SEA LEVEL (1929).
 4. THE SITE GRID IS PARALLEL AND PERPENDICULAR TO THE WISCONSIN STATE PLANE COORDINATE SYSTEM. SITE GRID COORDINATE 0+00N, 0+00E EQUALS STATE PLANE COORDINATE 3800+00N, 21975+00E.
 5. WASTE ARE THE GRABES TO WHICH THE CLAY LINER AND CLAY SIZEMALL WILL BE CONSTRUCTED. A 1 FOOT GRANULAR BLANKET WILL BE CONSTRUCTED ON THE CLAY LINER AS SHOWN ON DETAILS 1/12 AND 2/12.
 6. CONTOURS SHOWN OUTSIDE THE LIMITS OF WASTE ARE THE TOP OF 6 INCHES OR MORE SEEDING, FERTILIZED AND MULCHED AS SOON AS PRACTICAL.
 7. DETAILED ENGINEERING PLANS FOR THE LANDFILL ENTRANCE AND BITUMINOUS ACCESS ROAD FROM THE SITE ENTRANCE TO THE POINT IDENTIFIED AS STATION 0+00R WERE DEVELOPED BY DANE COUNTY PUBLIC WORKS, AND ARE PROVIDED IN APPENDIX D OF THE REPORT. ADDITIONAL INFORMATION REGARDING THE BITUMINOUS AND GRAVEL ACCESS ROAD EXTENDING BEYOND THE SCALE HOUSE AND LEACHATE TRANSFER SYSTEM CONSTRUCTION IS ON PLAN SHEET 11.
 8. TYPE 'A' NOTCH DITCHES WILL BE CONSTRUCTED IN AREAS WHERE DITCH FLOW IS PERPENDICULAR TO SLOPES. TYPE 'C' NOTCH DITCHES WILL BE CONSTRUCTED WHERE DITCH FLOW IS ACROSS SLOPE ON BERMS AND SLOPES. TYPE 'B' DITCHES WILL BE CONSTRUCTED IN AREAS OF HEAVY FLOW. SEE DETAIL 1/13 FOR DITCH CONSTRUCTION DETAILS.

NOTE: CONTRACTOR SHALL BE HELD LIABLE FOR ANY DAMAGES, CLAIMS, LOSSES, OR EXPENSES, INCLUDING LEGAL FEES, ARISING OUT OF ANY MODIFICATIONS MADE TO OR ANY UNAUTHORIZED REUSE OF THIS DRAWING BEYOND ITS INTENDED PURPOSE.