

**Facility:**

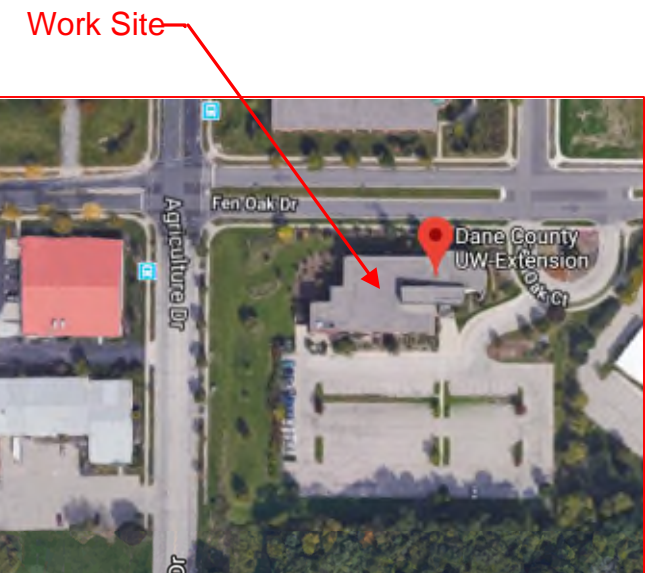
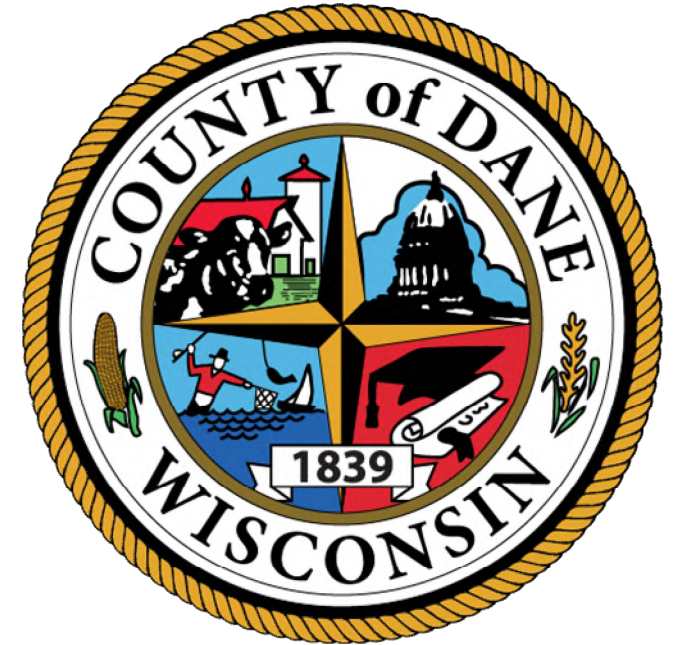
Dane County  
Lyman F. Anderson Agriculture &  
Conservation Center

**Project:**

Facility Card Access System  
Dane County Public Works  
Project No.: 317039

**Location:**

5201 Fen Oak Drive  
Madison, WI 53713



**CBRE|ESI Contact Information:**

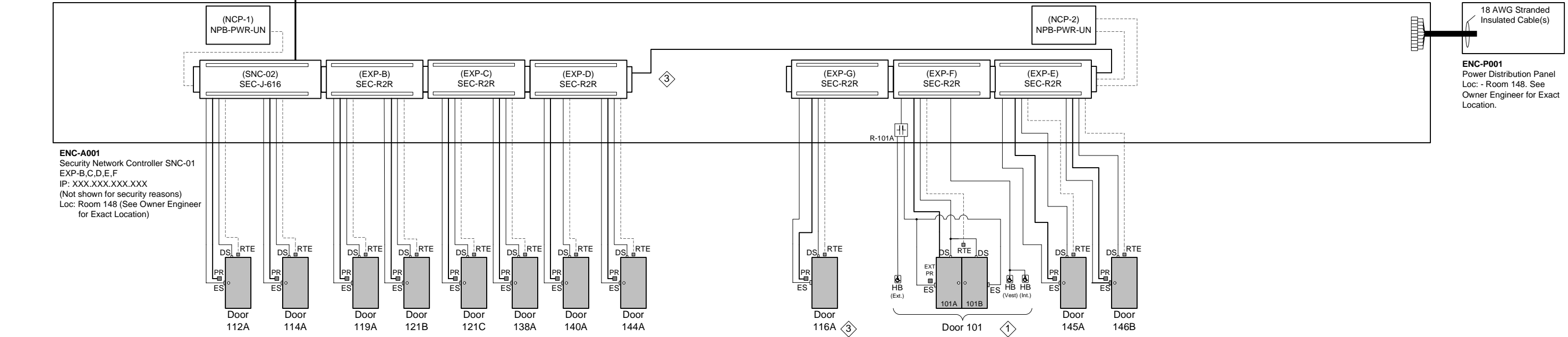
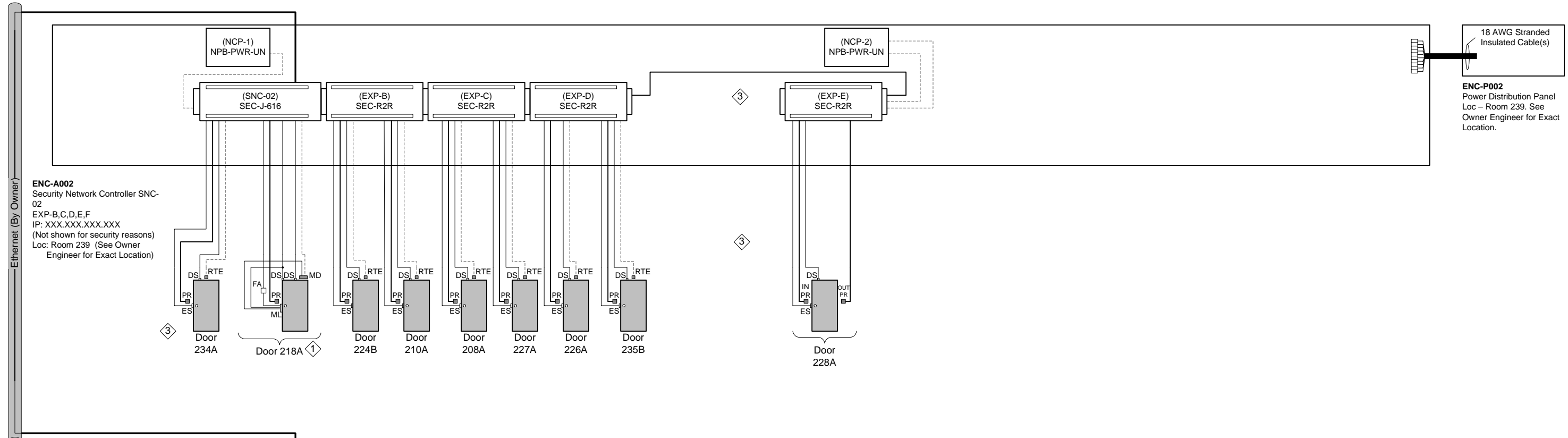
Brett Shinkle – Project Manager  
1-800-522-0372  
www.thinkESI.com

Operations Support Center  
1-877-264-0657  
support@thinkESI.com



Drawing Creation	Date: 03/13/2018
Latest Revision	Date: 06/05/2018





**DOOR LEGEND**

DS = Door Status Contacts
ES = Electric Door Strike
FA = Fire Alarm
HB = Handicap Access Button
IC = Intercom (iPhone)
ML = Mag-Lock
MD = Motion Detector
PB = Momentary Push Button
PR = Proximity Card Reader
RB = Alarm Reset Button
RTE = Request to Exit

**Door XX**

**RISER - CABLE LEGEND**

————— = 2-Conductor 18 AWG (Belden Non-Plenum: 9740, Plenum: 82740) - Door Strike, Door Status, HB & RB
----- = 4-Conductor 18 AWG (Belden Non-Plenum: 8489, Plenum: 88489) - Request to Exit
————— = 6-Conductor Shielded 18 AWG - (Belden Non-Plenum: 5304FE, Plenum: 6304FE) - Proximity Reader
----- = By Electrical Contractor - Traveling Elevator Proximity Reader Wire (6-Conductor Shielded 24 AWG)
————— = CAT5e/6 - Ethernet (Belden 1500A or Better)
----- = Coaxial Cable (CCTV) See Note
----- = Fiber Optic Cable 13

**TITLE:** Dane County - Lyman F. Anderson A & C Center - Card Access System - DC PN 317039

**DESCRIPTION:** Access Control - Riser Diagram

**DATE:** 03/13/2018

**APPROVED BY:** Mike Mittelsteadt

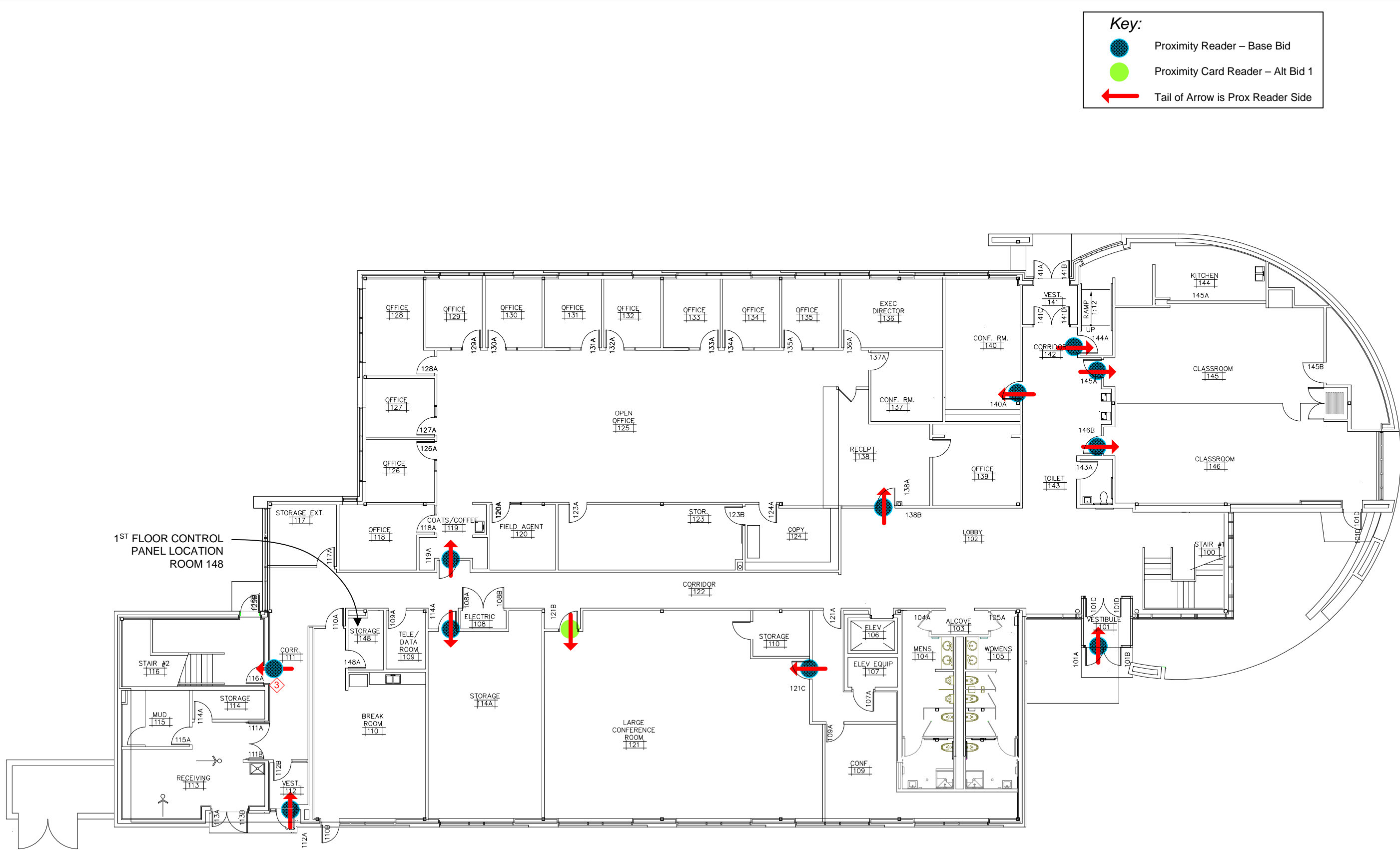
**DRAWN BY:** Steve Ferns

**SCALE:** NTS

**FILENAME:** Dane Co - Fen Oak - Access Dwg.vsd

REV.	DESCRIPTION	DATE	BY
3	Modified A Door Acc Equip Loc, Rel to Bid	05/02/18	SEF
1	Engr Comments, Release for Electrical Bid	03/30/18	SEF

**CBRE|ESI**  
www.thinkESI.com  
1-800-522-0372  
Copyright 2003-2018 ESI. All rights reserved. Do not copy or duplicate without written permission.

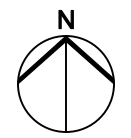


**Key:**

- Proximity Reader – Base Bid
- Proximity Card Reader – Alt Bid 1
- ← Tail of Arrow is Prox Reader Side

1<sup>ST</sup> FLOOR CONTROL  
PANEL LOCATION  
ROOM 148




FIRST FLOOR 1 3  
 LYMAN F. ANDERSON CENTER  
 DCPW: 3-16-18  
 SCALE: NONE

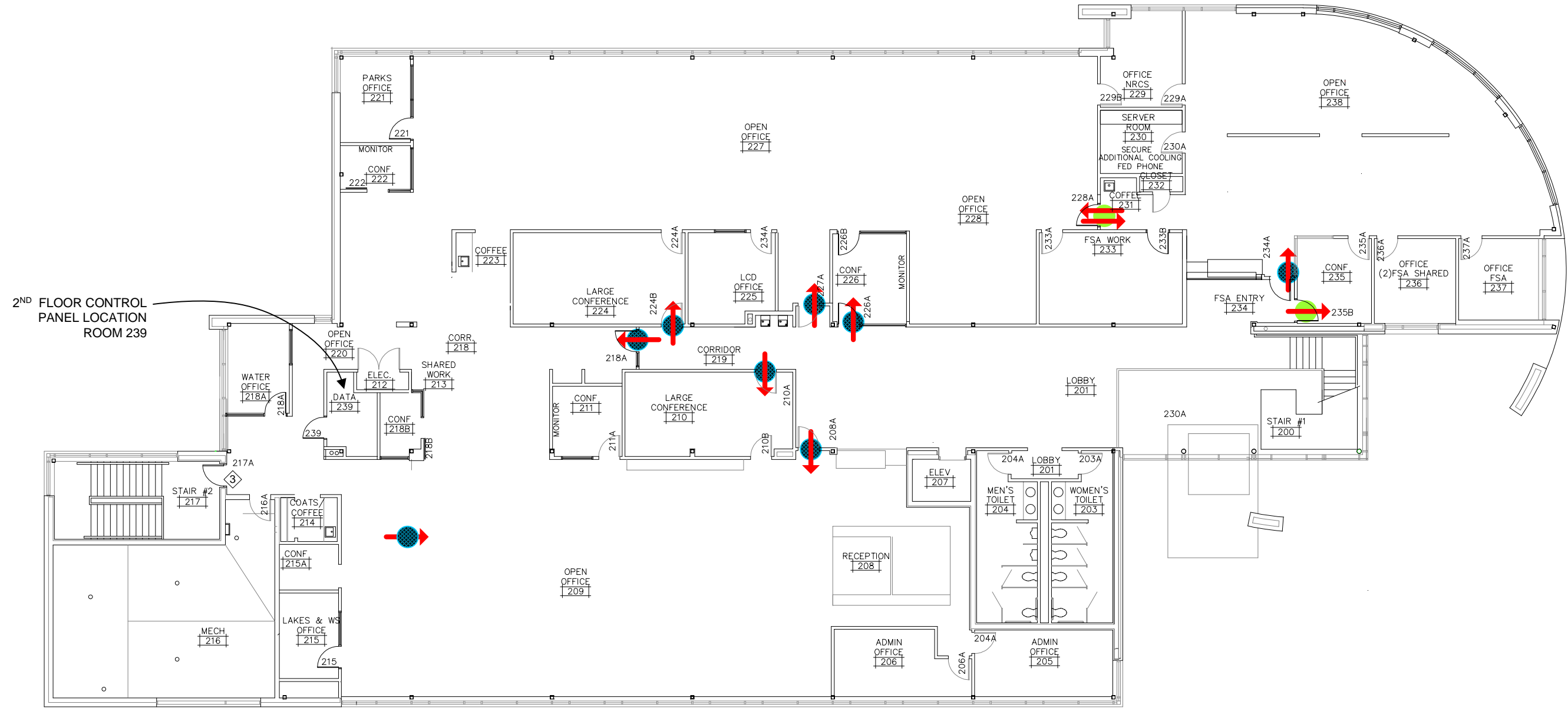


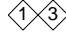
TITLE: Dane County - Lyman F. Anderson A & C Center - Card Access System - DC PN 317039	
DESCRIPTION: First Floor Plan & Equipment Locations	DATE: 03/20/2018
DRAWN BY: Steve Ferns	APPROVED BY: Mike Mittelsteadt
JOB #: 22181400010	SCALE: NTS
SEF 05/02/18	SEF 03/30/18
Engr Comments, Release for Electrical Bid	BY
REV.	DESCRIPTION

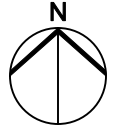
**CBRE|ESI**  
 www.thinkESI.com  
 1-800-522-0372  
 Copyright 2003-2018 ESI. All rights reserved. Do not copy or duplicate without written permission.

**Key:**

-  Proximity Reader – Base Bid
-  Proximity Card Reader – Alt Bid 1
-  Tail of Arrow is Prox Reader Side



SECOND FLOOR   
 LYMAN F. ANDERSON CENTER  
 DCPW: 3-16-18  
 SCALE: NONE



TITLE: Dane County - Lyman F. Anderson A & C Center - Card Access System - DC PN 317039	
DESCRIPTION: Second Floor Plan & Equipment Locations	DATE: 03/20/2018
DRAWN BY: Steve Ferns	APPROVED BY: Mike Mittelsteadt
JOB #: 22181400010	SCALE: NTS
FILENAME: Dane Co - Fen Oak - Access Dwg.vsd	
REV. 1	DESCRIPTION
REV. 2	
REV. 3	Modified A Door Acc Equip Loc, Rel to Bid
REV. 4	Engr Comments, Release for Electrical Bid
REV. 5	
REV. 6	
REV. 7	
REV. 8	
REV. 9	
REV. 10	
REV. 11	
REV. 12	
REV. 13	
REV. 14	
REV. 15	
REV. 16	
REV. 17	
REV. 18	
REV. 19	
REV. 20	
REV. 21	
REV. 22	
REV. 23	
REV. 24	
REV. 25	
REV. 26	
REV. 27	
REV. 28	
REV. 29	
REV. 30	
REV. 31	
REV. 32	
REV. 33	
REV. 34	
REV. 35	
REV. 36	
REV. 37	
REV. 38	
REV. 39	
REV. 40	
REV. 41	
REV. 42	
REV. 43	
REV. 44	
REV. 45	
REV. 46	
REV. 47	
REV. 48	
REV. 49	
REV. 50	
REV. 51	
REV. 52	
REV. 53	
REV. 54	
REV. 55	
REV. 56	
REV. 57	
REV. 58	
REV. 59	
REV. 60	
REV. 61	
REV. 62	
REV. 63	
REV. 64	
REV. 65	
REV. 66	
REV. 67	
REV. 68	
REV. 69	
REV. 70	
REV. 71	
REV. 72	
REV. 73	
REV. 74	
REV. 75	
REV. 76	
REV. 77	
REV. 78	
REV. 79	
REV. 80	
REV. 81	
REV. 82	
REV. 83	
REV. 84	
REV. 85	
REV. 86	
REV. 87	
REV. 88	
REV. 89	
REV. 90	
REV. 91	
REV. 92	
REV. 93	
REV. 94	
REV. 95	
REV. 96	
REV. 97	
REV. 98	
REV. 99	
REV. 100	

**CBRE|ESI**  
 www.thinkESI.com  
 1-800-522-0372  
 Copyright 2003-2018 ESI. All rights reserved. Do not copy or duplicate without written permission.

## Mounting & Connection Details – Door Contacts

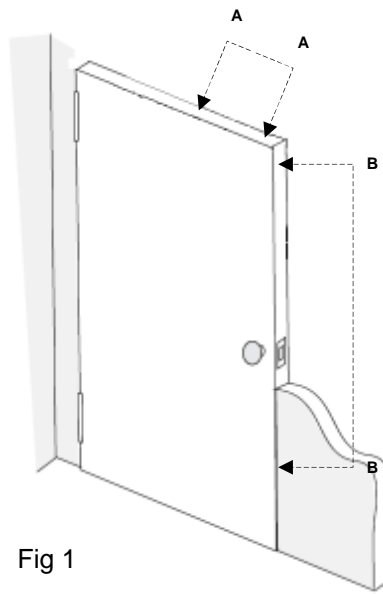
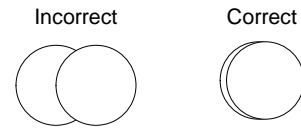


Fig 1

### Contact/Magnet Alignment



**Single Door:** Door status contacts may be installed in locations A or B. See Fig 1

**Double Door:** Door status contacts may be installed in location A. See Fig 1

Drill a 1" hole for the switch & magnet. See Fig 4

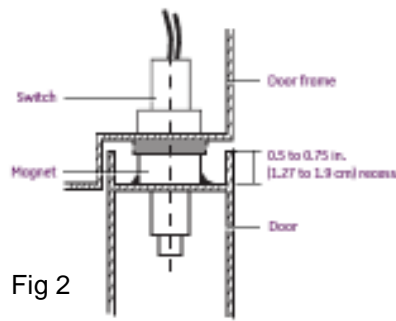


Fig 2

In wood doors drill the hole deep enough so the wire leads will not be crushed when the switch is inserted into the hole. See Fig 4

When mounting the magnet in a metal door the frame on the door may be recessed. The magnet can be raised slightly as long as the body of the magnet provides some support within the hole. Apply rubber silicone around the magnet. See Fig 2

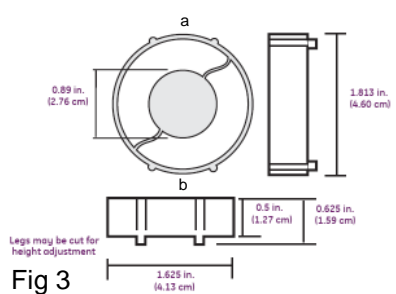


Fig 3

If the metal door has a recessed area too deep to support the magnet, a press fit rare earth magnet may be used. The magnet's outer case is compressed at points a & b, in Fig 3, and placed within the recessed area of the top portion of the door as seen in Fig 2. Once installed place a bead of rubber silicone at the contact points with the door. These magnets will be provided upon request or after it is determined they are needed for the application.

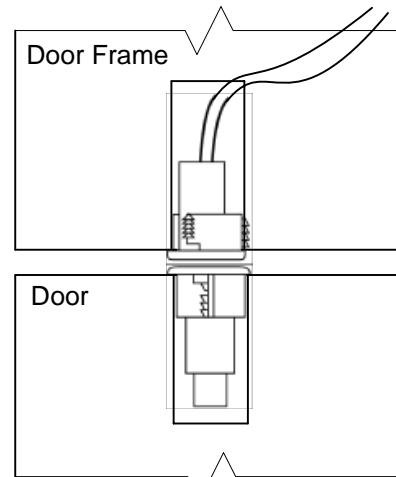


Fig 4

Double doors will have the associated door contacts wired in series as shown in Fig 5.

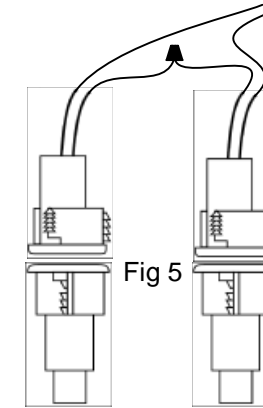


Fig 5

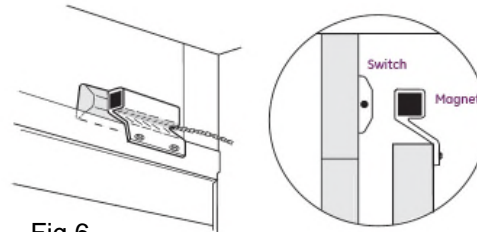


Fig 6

Overhead door contacts may be mounted at the top of the door as shown in Fig 6 or at the bottom of the door as shown in Fig 7 & 8.

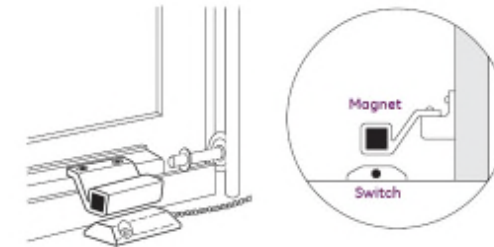


Fig 7

Mounting the contact at the top of the door provides less of a chance that the armored cable will become damaged. The drawback is the bottom of the door could be pried open without tripping the status contact. Contact Environmental Systems Inc.'s Project Manager regarding the correct location for the switch.

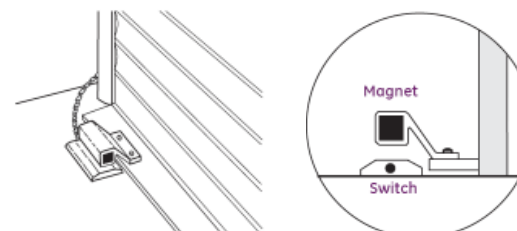


Fig 8

The type of overhead door status contact provided was the specified contact in the bid documents. This contact may not be the best product for every application. Should the installing contractor find the provided product does not work properly for the application please contact the Environmental Systems Inc.'s project manager and a different solution will be provided. See Fig 9 as an example of a substitute solution.

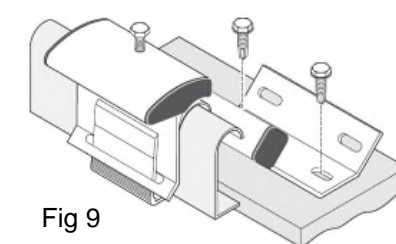


Fig 9

### GENERAL NOTES:

- Cap off all unused wires/connections on all devices.
- For all user activated devices, mount @ 48" above floor, per the American Disabilities Act, NFPA & all applicable codes.
- It is the responsibility of the installer to properly configure the jumpers and switches on all field mounted devices.
- Equipment can be position sensitive. It is the responsibility of the installer to verify proper mounting position per manufacturer's installation instructions.

CAT5e/CAT6 Type A Cable Detail  
TIA/EIA-568-A

Pin 1	White/Green	Pin 1	White/Green
Pin 2	Green	Pin 2	Green
Pin 3	White/Orange	Pin 3	White/Orange
Pin 4	Blue	Pin 4	Blue
Pin 5	White/Blue	Pin 5	White/Blue
Pin 6	Orange	Pin 6	Orange
Pin 7	White/Brown	Pin 7	White/Brown
Pin 8	Brown	Pin 8	Brown

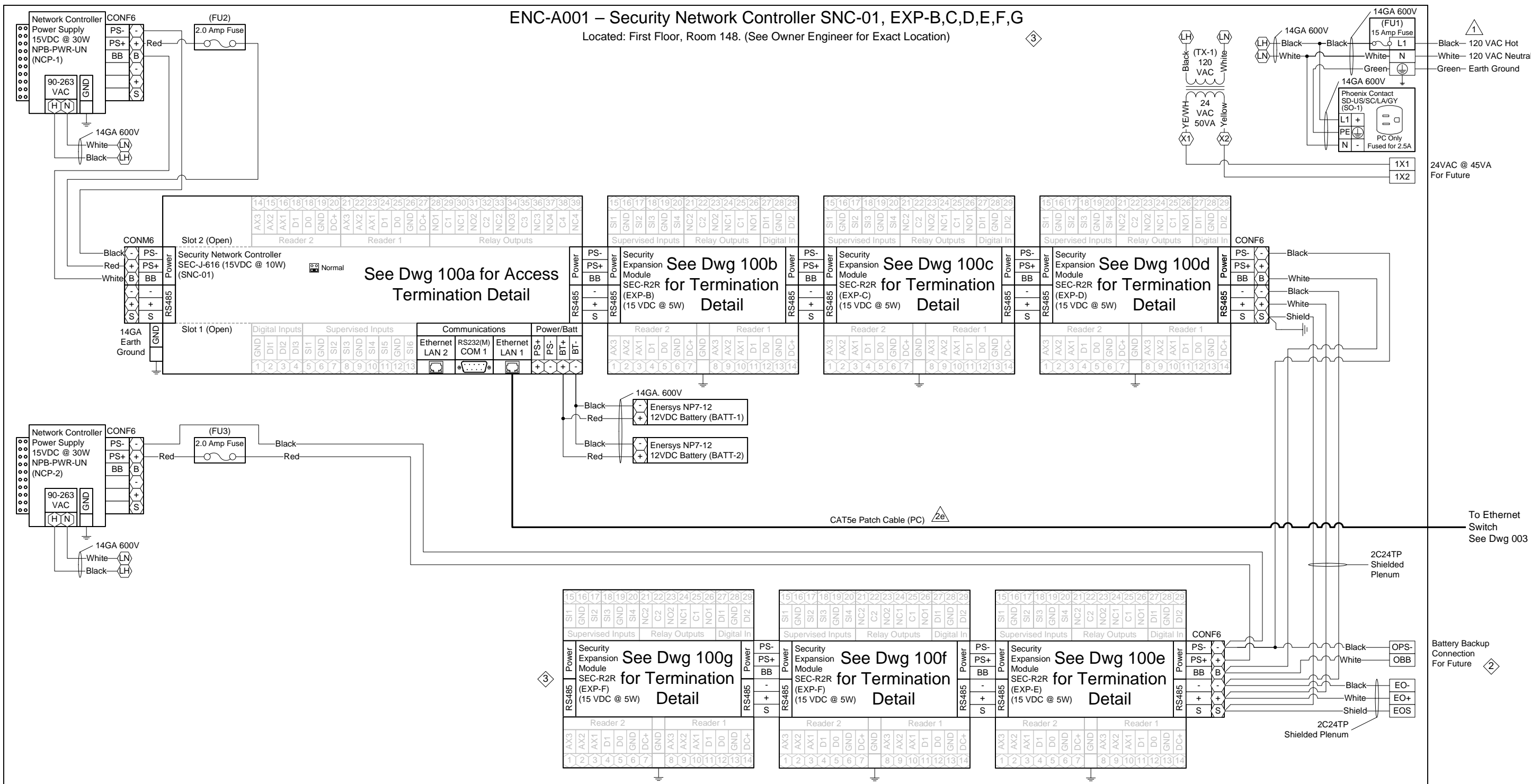
CAT5e/CAT6 Type B Cable Detail  
TIA/EIA-568-B

Pin 1	White/Orange	Pin 1	White/Orange
Pin 2	Orange	Pin 2	Orange
Pin 3	White/Green	Pin 3	White/Green
Pin 4	Blue	Pin 4	Blue
Pin 5	White/Blue	Pin 5	White/Blue
Pin 6	Green	Pin 6	Green
Pin 7	White/Brown	Pin 7	White/Brown
Pin 8	Brown	Pin 8	Brown

TITLE: Dane County - Lyman F. Anderson A & C Center - Card Access System - DC PN 317039 DESCRIPTION: Mounting & Connection Details – Door Contacts	DRAWN BY: Steve Ferns SCALE: NTS	APPROVED BY: Mike Mittelsteadt DATE: 03/13/2018	JOB #: 22181400010 DWG PAGE #: 008	FILENAME: Dane Co - Fen Oak - Access Dwg.vsd
1 2 3 4 5 6 7 8	1 2 3 4 5 6 7 8	1 2 3 4 5 6 7 8	1 2 3 4 5 6 7 8	1 2 3 4 5 6 7 8

# ENC-A001 – Security Network Controller SNC-01, EXP-B,C,D,E,F,G

Located: First Floor, Room 148. (See Owner Engineer for Exact Location)



ENC:	Module Tag:	Module Type:	Serves:	Termination Detail Dwg:
ENC-A001	SNC-001	SEC-J-601	Door(s) 112A, 114A	100a
	EXP-B	SEC-R2R	Door(s) 119A, 121B	100b
	EXP-C	SEC-R2R	Door(s) 121C, 138A	100c
	EXP-D	SEC-R2R	Door(s) 140A, 144B	100d
	EXP-E	SEC-R2R	Door(s) 145A, 146B	100e
	EXP-F	SEC-R2R	Door(s) 101A, B	100f
	EXP-G	SEC-R2R	Door(s) 116A	100g

**Legend**

XXX Terminal Block

XX Controller Terminal

**JACE-2/6 SERIAL PORT CONFIGURATION JUMPERS**

Normal Serial Shell

- NOTE: Installer to provide main disconnect and branch circuit protection. 120 VAC to be supplied from a dedicated 20 Amp branch circuit, with separate Hot, Neutral and Green equipment grounding conductor. Terminate equipment grounding conductor at branch circuit distribution panel, to panel enclosure or grounding conductor by approved means.
- NOTE: Cap off all unused wires/connections on all devices.
- NOTE: It is the responsibility of the installer to properly configure the jumpers and switches on all field mounted devices.

Tag	Qty.	Part #	Mfg.	Description
ENC-A001	1	A36N24BLP	Hoffman	36"x24"x8.63" Enclosure
	1	A36N24MPP	Hoffman	36"x24" Panel (Perforated)
SNC-01	1	SEC-J-616	Tridium	Security Network Controller
NCP-1,2	2	NPB-PWR-UN	Tridium	90-230VAC/15VDC 30W Universal Power Supply
EXP-B thru G	6	SEC-R2R	Vykon	2 Reader, 4 UI, 4 DO Security Expansion Module
BATT-1,2	2	NP7-12	Energysys	7AmpHr 12VDC Battery
CON F6	4	1757051	Phoenix	Green 5.08 6 Position Female Terminal
CON M6	1	1786213	Phoenix	Green 5.08 6 Position Male Terminal
FU1	1	ATQR-15	Ferraz Shaw mut	600VAC 15 Amp Slow-Blow Fuse
	1	USCC1	Ferraz Shaw mut	Fuse Holder
FU2,3	2	314002	Littel Fuse	120VAC 2.0 Amp Fast-Blow Fuse
PC	1	100404GY/100405GY	BestLink	7/10' CAT5e Ethernet Patch Cable
SO-1	1	SD-US/SC/LA/GY	Phoenix	Single Outlet
TX-1	1	TR50VA009	Functional Devices	120/208/240VAC/24VAC 50VA Transformer

TITLE:	Dane County - Lyman F. Anderson A & C Center - Card Access System - DC PN 317039		
DESCRIPTION:	ENC-A001 – Sec. Network Controller SNC-01, EXP-B,C,D,E,F,G – Panel Detail & BOM		
JOB #:	22181400010	DATE:	03/13/2018
Modified A Door Acc Equip Loc. Rel to Bid	05/02/18	SEF	
Engr Comments, Release for Electrical Bid	03/30/18	SEF	
REV.		DATE	BY
1			
2			
3			
4			
5			
6			
7			
8			
9			
10			
11			
12			
13			
14			
15			
16			
17			
18			
19			
20			
21			
22			
23			
24			
25			
26			
27			
28			
29			
30			
31			
32			
33			
34			
35			
36			
37			
38			
39			
40			
41			
42			
43			
44			
45			
46			
47			
48			
49			
50			
51			
52			
53			
54			
55			
56			
57			
58			
59			
60			
61			
62			
63			
64			
65			
66			
67			
68			
69			
70			
71			
72			
73			
74			
75			
76			
77			
78			
79			
80			
81			
82			
83			
84			
85			
86			
87			
88			
89			
90			
91			
92			
93			
94			
95			
96			
97			
98			
99			
100			

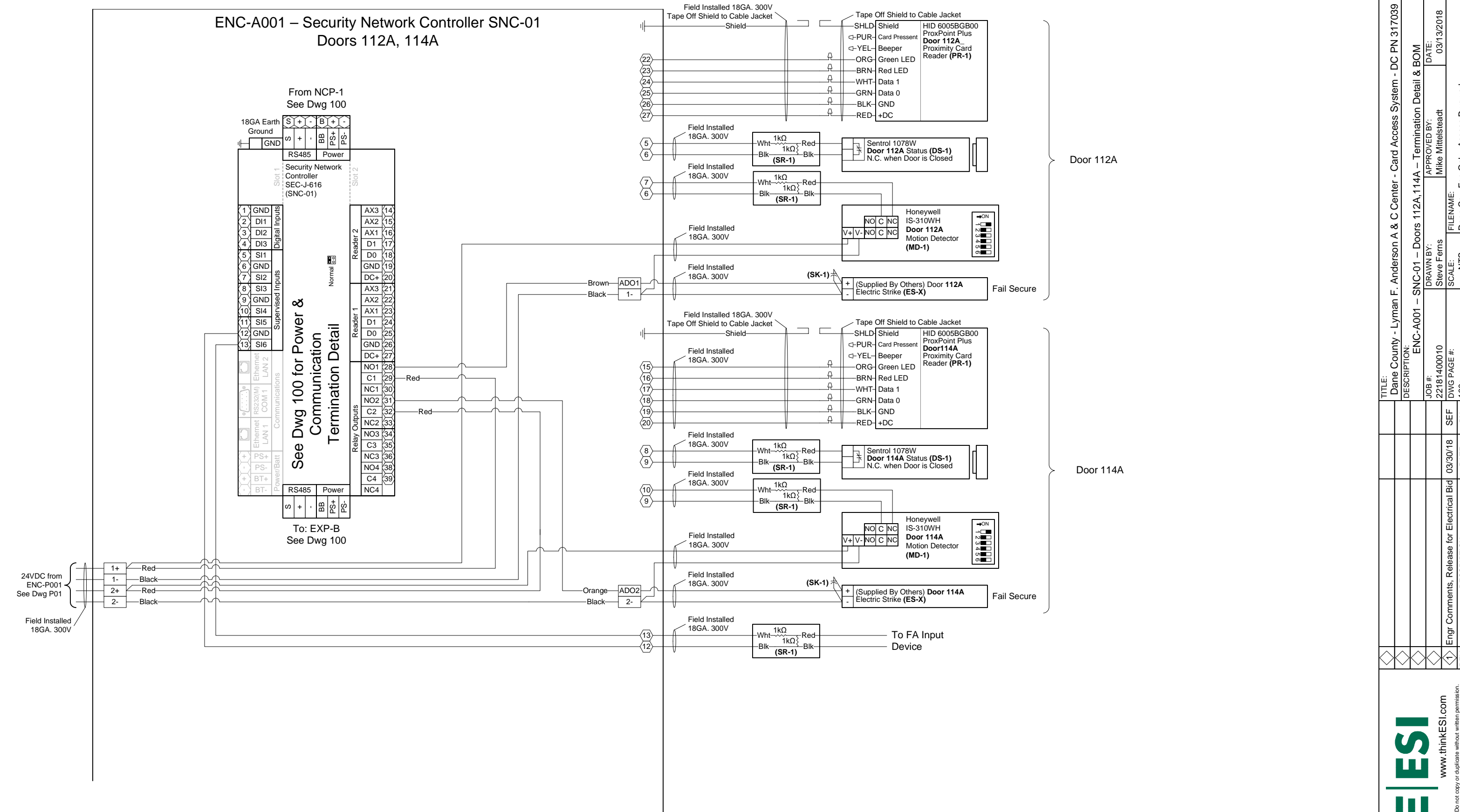
**CBRE | ESI**

www.thinkESI.com

1-800-522-0372

Copyright 2003-2018 ESI. All rights reserved. Do not copy or duplicate without written permission.

ENC-A001 – Security Network Controller SNC-01  
Doors 112A, 114A



Field Devices - Bill of Material				
Tag	Qty.	Part #	Mfg.	Description
DS-1	2	1078W	Sentrol (By Others)	N.O. Recessed Door Status (1" Dia.)
ES-X	2	By Others	By Others	Electric Door Strike
MD-1	2	IS-310WH	Honeywell (By Others)	Request to Exit - Motion Detector
PR-1	2	6005BGB00	HID (By Others)	Proximity Card Reader
SK-1	2	S4	Northern Computer	S-4 Suppressor Kit
SR-1	5	10747	Tridium	4-Lead Supervisory Resistor Pack

- 3 NOTE: Cap off all unused wires/connections on all devices.
- 5 NOTE: For all user activated devices, mount @ 48" above floor, per the American Disabilities Act, NFPA & all applicable codes.
- 6 NOTE: It is the responsibility of the installer to properly configure the jumpers and switches on all field mounted devices.

**TITLE:** Dane County - Lyman F. Anderson A & C Center - Card Access System - DC PN 317039

**DESCRIPTION:** ENC-A001 – SNC-01 – Doors 112A,114A – Termination Detail & BOM

**JOB #:** 22181400010

**DATE:** 03/13/2018

**DRAWN BY:** Steve Ferns

**APPROVED BY:** Mike Mittelsteadt

**DWG PAGE #:** 100a

**SCALE:** NTS

**FILENAME:** Dane Co - Fen Oak - Access Dwg.vsd

Engr Comments, Release for Electrical Bid

DATE: 03/30/18

BY: [Signature]

REV. 1

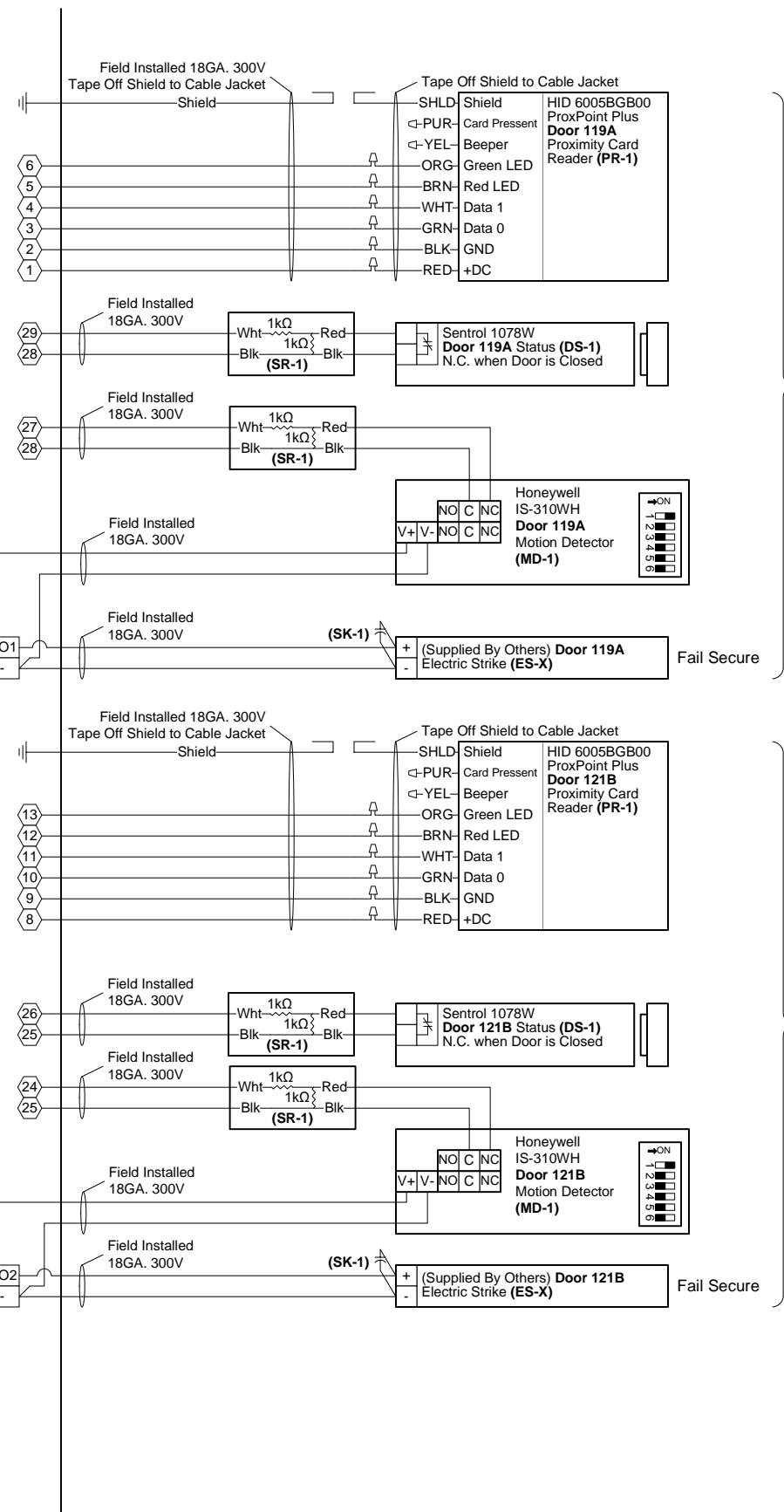
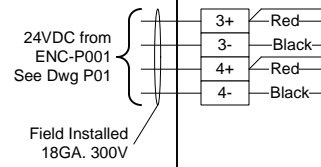
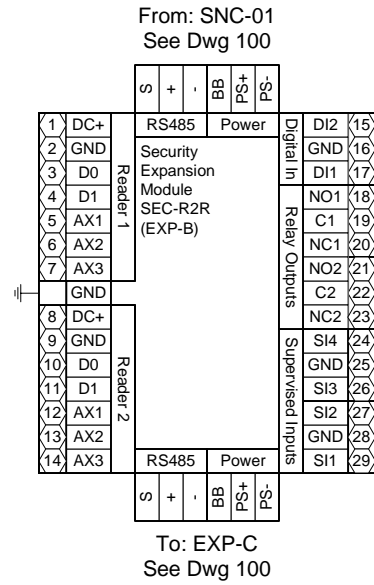
www.thinkESI.com

1-800-522-0372

Copyright 2003-2018 ESI. All rights reserved. Do not copy or duplicate without written permission.



ENC-A001 - SNC-01 EXP-B  
Doors 119A, 121B



Door 119A

Door 121B

- 3 NOTE: Cap off all unused wires/connections on all devices.
- 5 NOTE: For all user activated devices, mount @ 48" above floor, per the American Disabilities Act, NFPA & all applicable codes.
- 6 NOTE: It is the responsibility of the installer to properly configure the jumpers and switches on all field mounted devices.

Field Devices - Bill of Material				
Tag	Qty.	Part #	Mfg.	Description
DS-1	2	1078W	Sentrol (By Others)	N.O. Recessed Door Status (1" Dia.)
ES-X	2	By Others	By Others	Electric Door Strike
MD-1	2	IS-310WH	Honeywell (By Others)	Request to Exit - Motion Detector
PR-1	2	6005BGB00	HID (By Others)	Proximity Card Reader
SK-1	2	S4	Northern Computer	S-4 Suppressor Kit
SR-1	4	10747	Tridium	4-Lead Supervisory Resistor Pack

TITLE: Dane County - Lyman F. Anderson A & C Center - Card Access System - DC PN 317039	
DESCRIPTION: ENC-A001 - SNC-01 EXP-B - Doors 119A, 121B - Termination Detail & BOM	
JOB #: 22181400010	DATE: 03/13/2018
DRAWN BY: Steve Ferns	APPROVED BY: Mike Mittelsteadt
DWG PAGE #: 100b	SCALE: NTS
FILENAME: Dane Co - Fen Oak - Access Dwg.vsd	

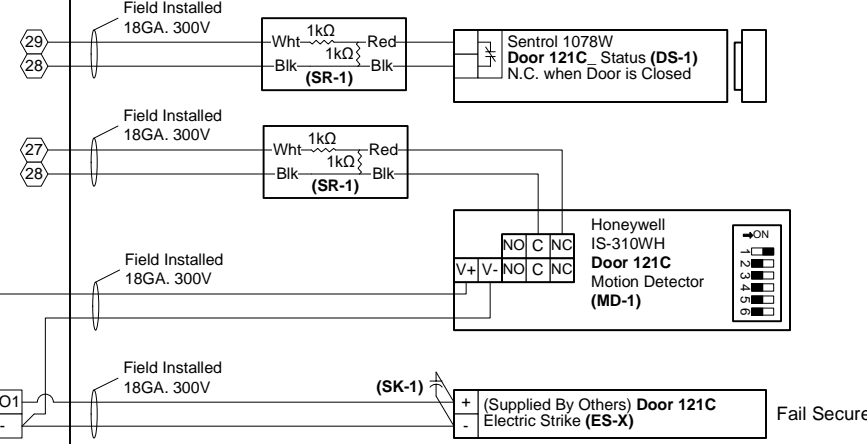
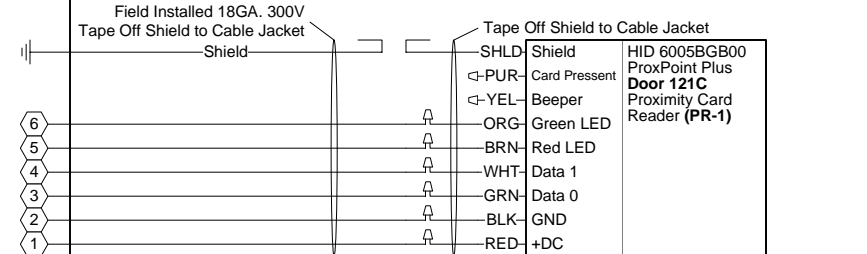
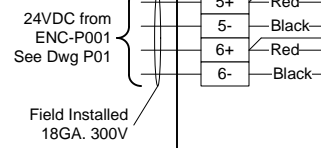
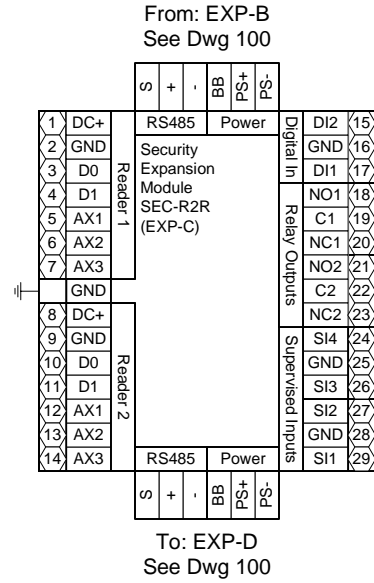
  

REV.	DATE	BY	DESCRIPTION
1	03/30/18	SEF	Engr Comments, Release for Electrical Bid

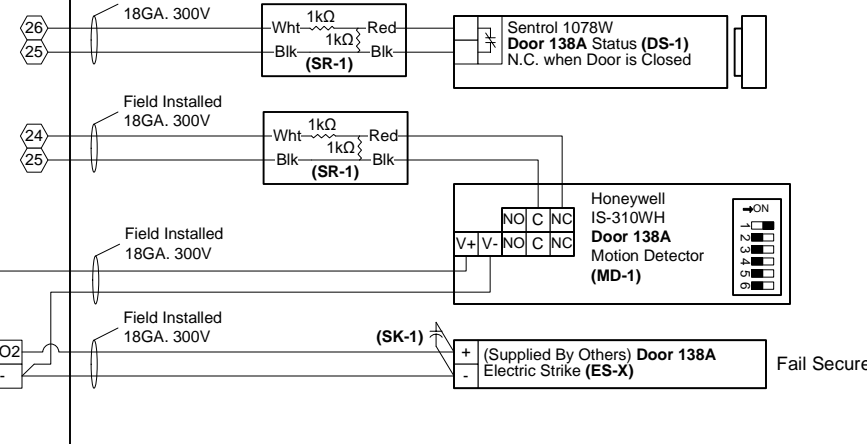
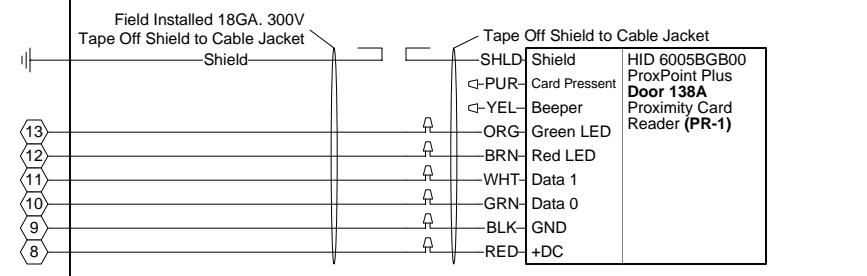
  

**CBRE|ESI**  
www.thinkESI.com  
1-800-522-0372  
Copyright 2003-2018 ESI. All rights reserved. Do not copy or duplicate without written permission.

ENC-A001 - SNC-01 EXP-C  
Doors 121C,138A



Door 121C



Door 138A

- 3 NOTE: Cap off all unused wires/connections on all devices.
- 5 NOTE: For all user activated devices, mount @ 48" above floor, per the American Disabilities Act, NFPA & all applicable codes.
- 6 NOTE: It is the responsibility of the installer to properly configure the jumpers and switches on all field mounted devices.

Field Devices - Bill of Material				
Tag	Qty.	Part #	Mfg.	Description
DS-1	2	1078W	Sentrol (By Others)	N.O. Recessed Door Status (1" Dia.)
ES-X	2	By Others	By Others	Electric Door Strike
MD-1	2	IS-310WH	Honeywell (By Others)	Request to Exit - Motion Detector
PR-1	2	6005BGB00	HID (By Others)	Proximity Card Reader
SK-1	2	S4	Northern Computer	S-4 Suppressor Kit
SR-1	4	10747	Tridium	4-Lead Supervisory Resistor Pack

TITLE: Dane County - Lyman F. Anderson A & C Center - Card Access System - DC PN 317039

DESCRIPTION: ENC-A001 - SNC-01 EXP-C - Doors 121C, 138A - Termination Detail & BOM

JOB #: 22181400010

DATE: 03/13/2018

APPROVED BY: Steve Ferns

FILENAME: Dane Co - Fen Oak - Access Dwg.vsd

SCALE: NTS

DWG PAGE #: 100C

BY: SEF

DATE: 03/30/18

REV. 1

Engr Comments, Release for Electrical Bid

DESCRIPTION

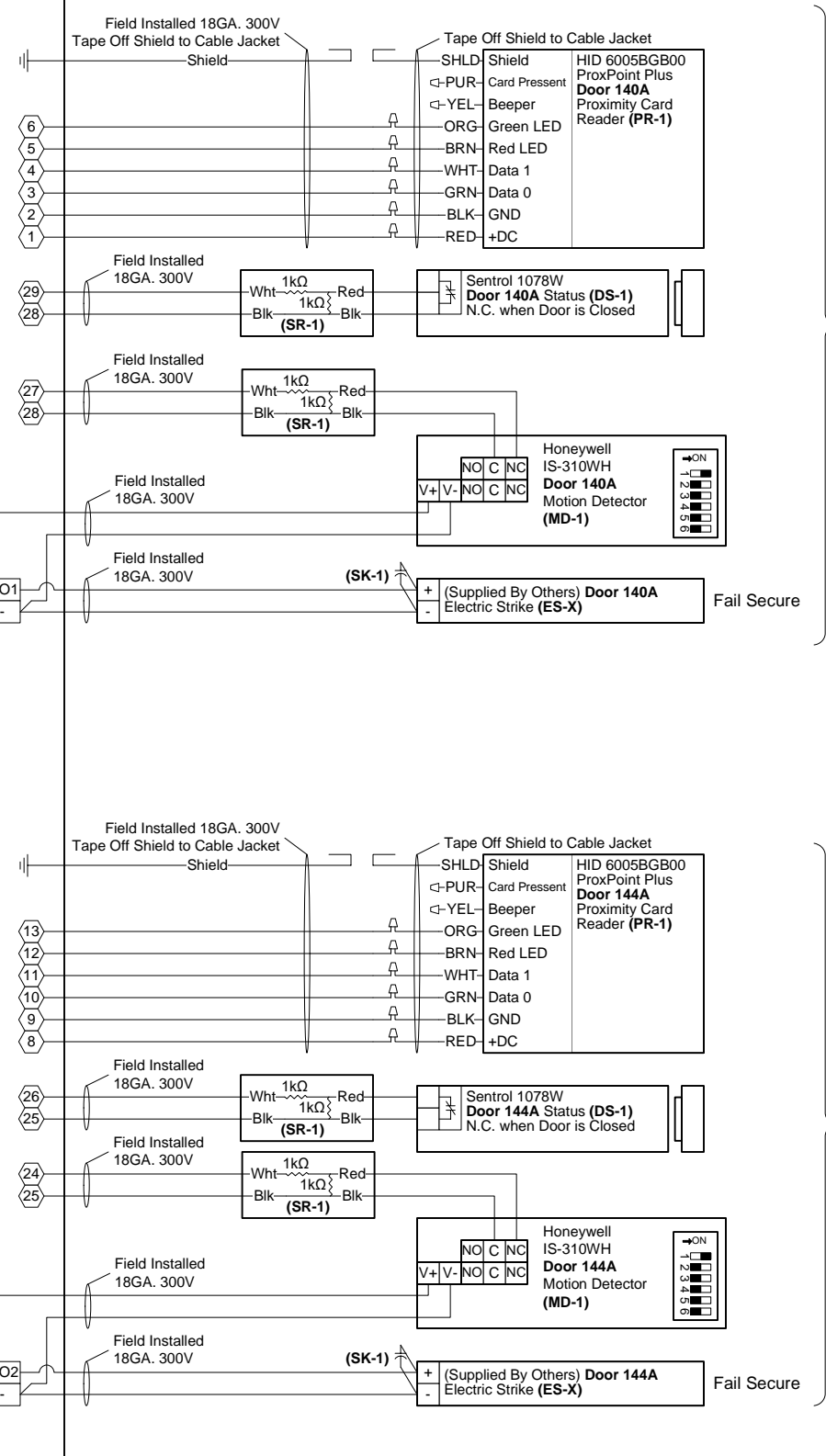
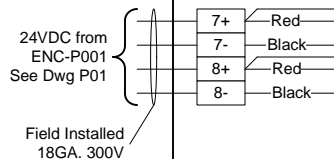
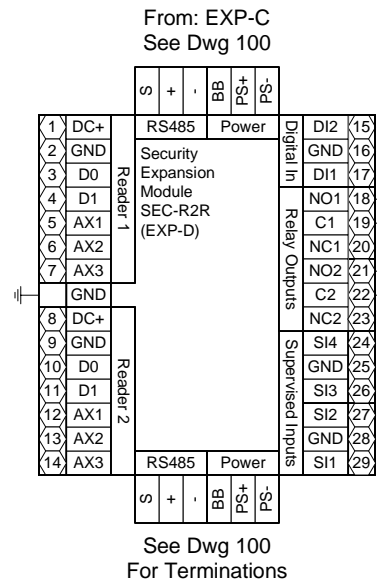
1-800-522-0372

www.thinkESI.com

Copyright 2003-2018 ESI. All rights reserved. Do not copy or duplicate without written permission.

**CBRE|ESI**

ENC-A001 - SNC-01 EXP-D  
Doors 140A, 144A



- 3 NOTE: Cap off all unused wires/connections on all devices.
- 5 NOTE: For all user activated devices, mount @ 48" above floor, per the American Disabilities Act, NFPA & all applicable codes.
- 6 NOTE: It is the responsibility of the installer to properly configure the jumpers and switches on all field mounted devices.

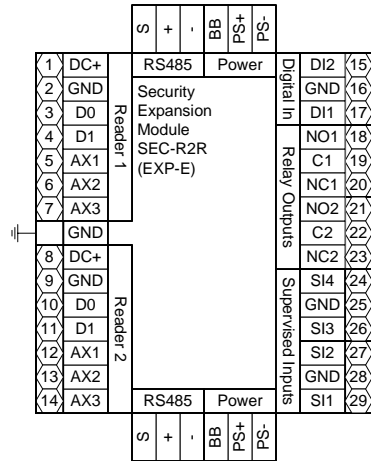
Field Devices - Bill of Material				
Tag	Qty.	Part #	Mfg.	Description
DS-1	2	1078W	Sentrol (By Others)	N.O. Recessed Door Status (1" Dia.)
ES-X	2	By Others	By Others	Electric Door Strike
MD-1	2	IS-310WH	Honeywell (By Others)	Request to Exit - Motion Detector
PR-1	2	6005BGB00	HID (By Others)	Proximity Card Reader
SK-1	2	S4	Northern Computer	S-4 Suppressor Kit
SR-1	4	10747	Tridium	4-Lead Supervisory Resistor Pack

**CBRE|ESI**  
www.thinkESI.com  
1-800-522-0372  
Copyright 2003-2018 ESI. All rights reserved. Do not copy or duplicate without written permission.

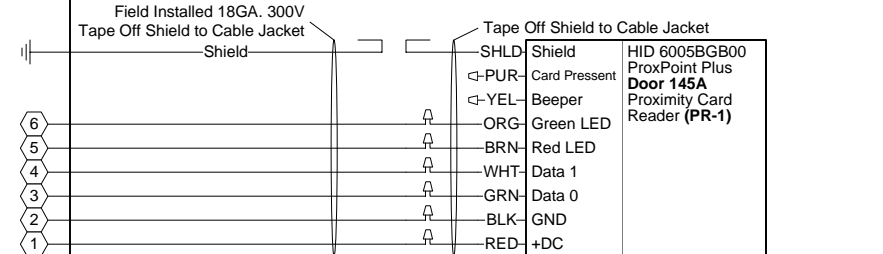
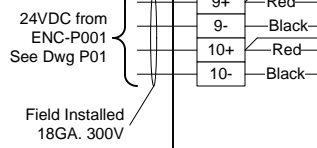
TITLE:	Dane County - Lyman F. Anderson A & C Center - Card Access System - DC PN 317039
DESCRIPTION:	ENC-A001 - SNC-01 EXP-D - Doors 140A, 144A - Termination Detail & BOM
JOB #:	22181400010
DATE:	03/13/2018
DRAWN BY:	Steve Ferns
APPROVED BY:	Mike Mittelsteadt
FILENAME:	Dane Co - Fen Oak - Access Dwg.vsd
DWG PAGE #:	1000
SCALE:	NTS
DATE	BY
03/30/18	SEF
1	REV.
Engr Comments, Release for Electrical Bid	
DESCRIPTION	

ENC-A001 - SNC-01 EXP-E  
Doors 145A, 146B

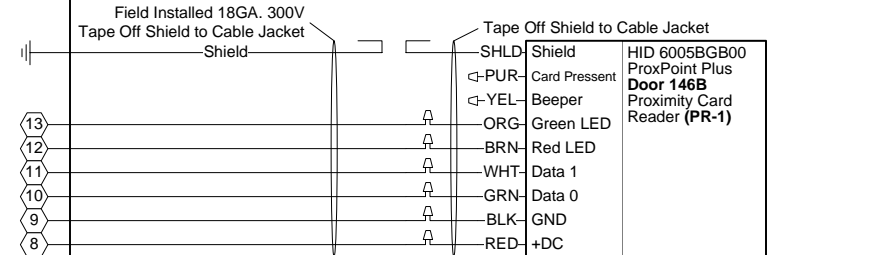
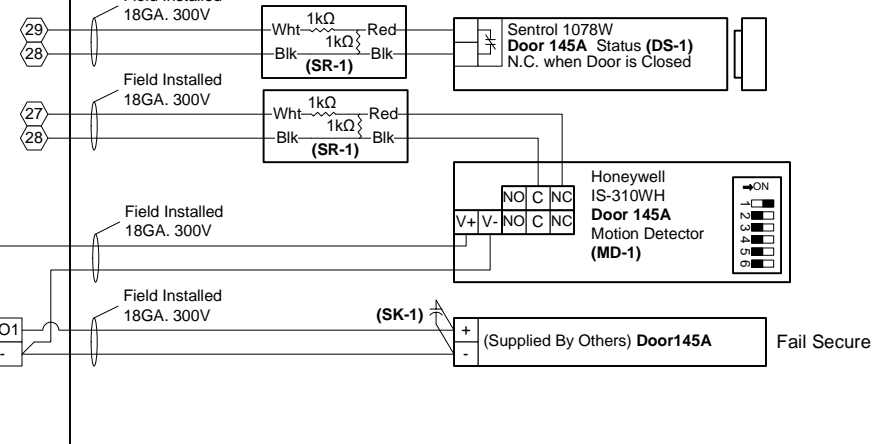
See Dwg 100  
For Terminations



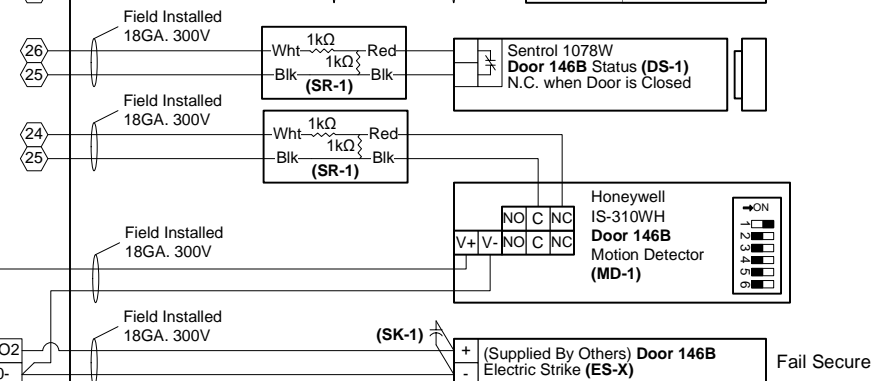
To: EXP-F  
See Dwg 100



Door 145A



Door 146B



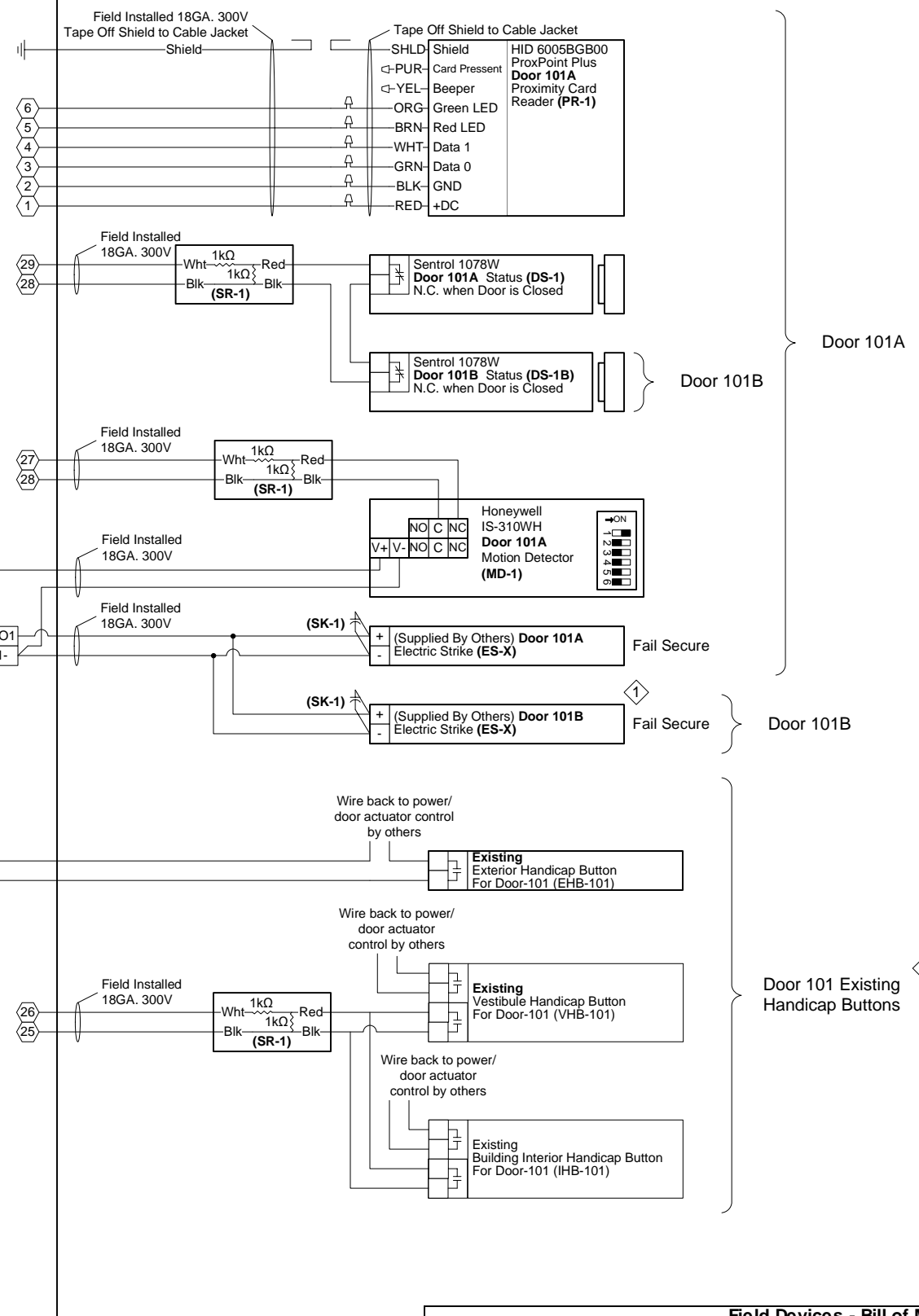
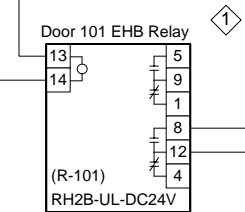
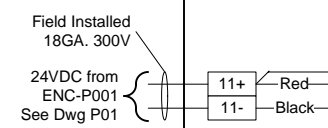
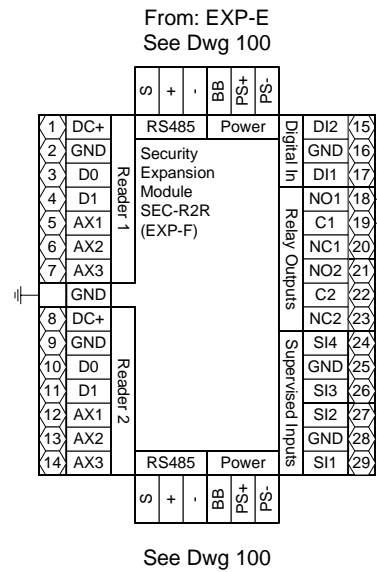
- 3 NOTE: Cap off all unused wires/connections on all devices.
- 5 NOTE: For all user activated devices, mount @ 48" above floor, per the American Disabilities Act, NFPA & all applicable codes.
- 6 NOTE: It is the responsibility of the installer to properly configure the jumpers and switches on all field mounted devices.

Field Devices - Bill of Material				
Tag	Qty.	Part #	Mfg.	Description
DS-1	2	1078W	Sentrol (By Others)	N.O. Recessed Door Status (1" Dia.)
ES-X	2	By Others	By Others	Electric Door Strike
MD-1	2	IS-310WH	Honeywell (By Others)	Request to Exit - Motion Detector
PR-1	2	6005BGB00	HID (By Others)	Proximity Card Reader
SK-1	2	S4	Northern Computer	S-4 Suppressor Kit
SR-1	4	10747	Tridium	4-Lead Supervisory Resistor Pack

TITLE:	Dane County - Lyman F. Anderson A & C Center - Card Access System - DC PN 317039	
DESCRIPTION:	ENC-A001 - SNC-01 EXP-E - Doors 145A, 146B - Termination Detail & BOM	
JOB #:	22181400010	
DATE:	03/13/2018	
APPROVED BY:	Mike Mittelsteadt	
DRAWN BY:	Steve Ferns	
FILENAME:	Dane Co - Fen Oak - Access Dwg.vsd	
DWG PAGE #:	100e	
SCALE:	NTS	
REV.	BY DATE	
1	Engr Comments, Release for Electrical Bid	03/30/18

**CBRE|ESI**  
www.thinkESI.com  
1-800-522-0372  
Copyright 2003-2018 ESI. All rights reserved. Do not copy or duplicate without written permission.

ENC-A001 - SNC-01 EXP-F  
Door 101A, 101B



- ⚠ NOTE: Cap off all unused wires/connections on all devices.
- ⚠ NOTE: For all user activated devices, mount @ 48" above floor, per the American Disabilities Act, NFPA & all applicable codes.
- ⚠ NOTE: It is the responsibility of the installer to properly configure the jumpers and switches on all field mounted devices.

Field Devices - Bill of Material				
Tag	Qty.	Part #	Mfg.	Description
DS-1	2	1078W	Sentrol (By Others)	N.O. Recessed Door Status (1" Dia.)
ES-X	1	By Others	By Others	Electric Door Strike
MD-1	1	IS-310WH	Honeywell (By Others)	Request to Exit Motion Detector
PR-1	2	6005BGB00	HID (By Others)	Proximity Card Reader
SK-1	2	S4	Northern Computer	S-4 Suppressor Kit
SR-1	3	10747	Tridium	4-Lead Supervisory Resistor Pack
R-101	1	RH2B-UL DC24V	IDEC	DPDT Relay w ith indicator
	1	SH2B-05	IDEC	Standard DIN Rail Mount

TITLE: Dane County - Lyman F. Anderson A & C Center - Card Access System - DC PN 317039

DESCRIPTION: ENC-A001 - SNC-01 EXP-F - Doors 101A, 101B - Termination Detail & BOM

JOB #: 22181400010

DATE: 03/13/2018

APPROVED BY: Steve Ferns

FILENAME: Dane Co - Fen Oak - Access Dwg.vsd

REV. 1

DATE 03/30/18

BY SEF

DATE 05/02/18

BY SEF

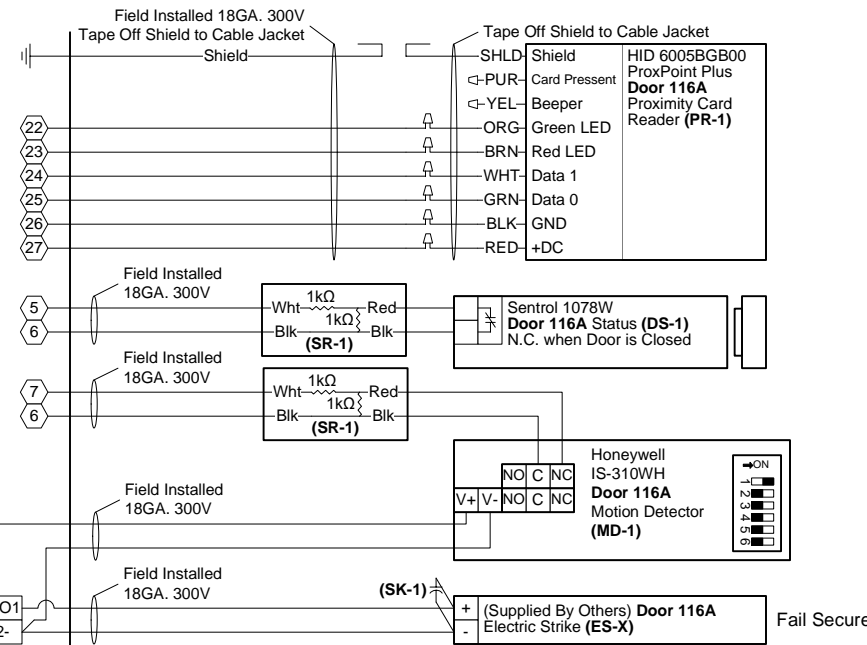
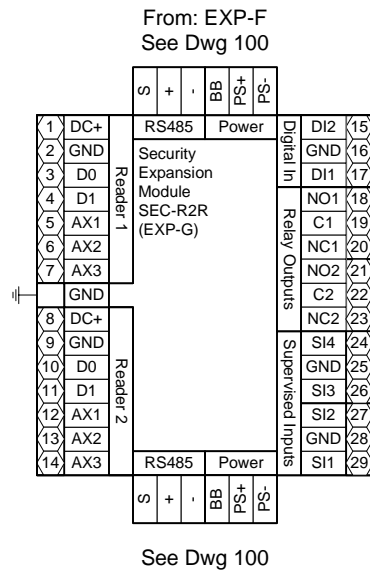
DESCRIPTION: Modified A Door Acc Equip Loc, Rel to Bid Engr Comments, Release for Electrical Bid

www.thinkESI.com

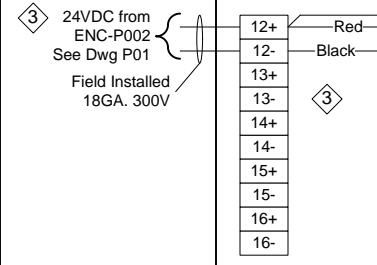
1-800-522-0372

Copyright 2003-2018 ESI. All rights reserved. Do not copy or duplicate without written permission.

ENC-A001 – SNC-01 EXP-G  
Door 116A



Door 116A



Field Devices - Bill of Material				
Tag	Qty.	Part #	Mfg.	Description
DS-1	1	1078W	Sentrol (By Others)	N.O. Recessed Door Status (1" Dia.)
ES-X	1	By Others	By Others	Electric Door Strike
MD-1	1	IS-310WH	Honeywell (By Others)	Request to Exit - Motion Detector
PR-1	1	6005BGB00	HID (By Others)	Proximity Card Reader
SK-1	1	S4	Northern Computer	S-4 Suppressor Kit
SR-1	2	10747	Tridium	4-Lead Supervisory Resistor Pack
R-116A	2	RH2B-UL DC24V	IDEC	DPDT Relay with indicator
	1	SH2B-05	IDEC	Standard DIN Rail Mount

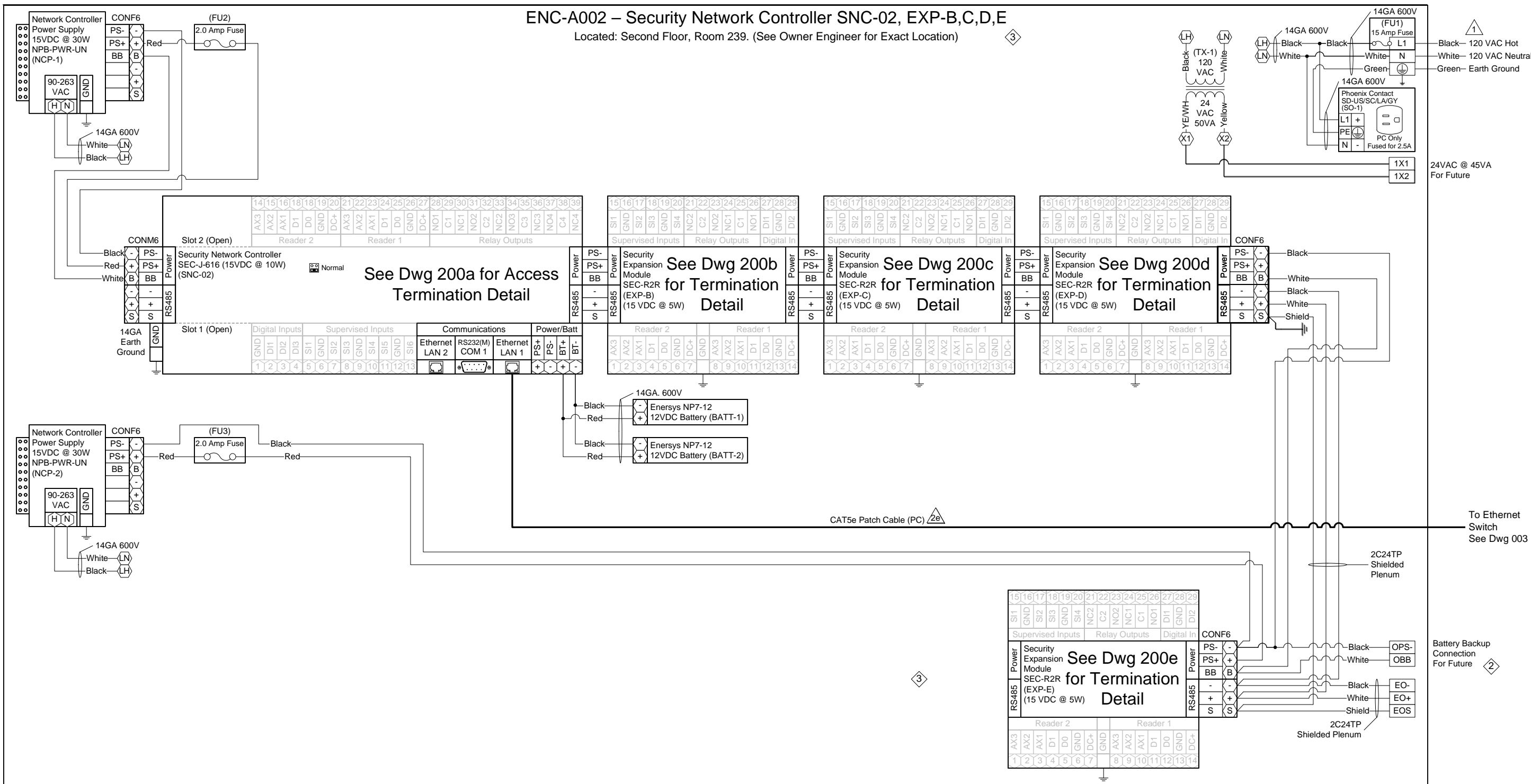
- NOTE: Cap off all unused wires/connections on all devices.
- NOTE: For all user activated devices, mount @ 48" above floor, per the American Disabilities Act, NFPA & all applicable codes.
- NOTE: It is the responsibility of the installer to properly configure the jumpers and switches on all field mounted devices.

TITLE:	Dane County - Lyman F. Anderson A & C Center - Card Access System - DC PN 317039		
DESCRIPTION:	ENC-A001 – SNC-01 – Door 116A – Termination Detail & BOM		
JOB #:	22181400010	DRAWN BY:	Steve Ferns
DWG PAGE #:	100g	SCALE:	NTS
DATE:	03/13/2018	APPROVED BY:	Mike Mittelsteadt
FILENAME:	Dane Co - Fen Oak - Access Dwg.vsd		

**CBRE|ESI**  
www.thinkESI.com  
1-800-522-0372  
Copyright 2003-2018 ESI. All rights reserved. Do not copy or duplicate without written permission.

# ENC-A002 – Security Network Controller SNC-02, EXP-B,C,D,E

Located: Second Floor, Room 239. (See Owner Engineer for Exact Location)



SNC-002 – ACCESS MODULE SCHEDULE				
ENC:	Module Tag:	Module Type:	Serves:	Termination Detail Dwg:
ENC-A002	SNC-002	SEC-J-601	Door(s) 234B,218A	200a
	EXP-B	SEC-R2R	Door(s) 224A, 210A	200b
	EXP-C	SEC-R2R	Door(s) 208A, 227A	200c
	EXP-D	SEC-R2R	Door(s) 226A, 235A	200d
	EXP-E	SEC-R2R	Door(s) 228A	200e

**Legend**

XXX Terminal Block

XX Controller Terminal

**JACE-2/6 SERIAL PORT CONFIGURATION JUMPERS**

Normal Serial Shell

- 1 NOTE: Installer to provide main disconnect and branch circuit protection. 120 VAC to be supplied from a dedicated 20 Amp branch circuit, with separate Hot, Neutral and Green equipment grounding conductor. Terminate equipment grounding conductor at branch circuit distribution panel, to panel enclosure or grounding conductor by approved means.
- 3 NOTE: Cap off all unused wires/connections on all devices.
- 6 NOTE: It is the responsibility of the installer to properly configure the jumpers and switches on all field mounted devices.

Access Control Panel - Bill of Material				
Tag	Qty.	Part #	Mfg.	Description
ENC-A002	1	A36N24BLP	Hoffman	36"x24"x8.63" Enclosure
	1	A36N24MPP	Hoffman	36"x24" Panel (Perforated)
SNC-02	1	SEC-J-616	Tridium	Security Network Controller
NCP-1,2	2	NPB-PWR-UN	Tridium	90-230V AC/15VDC 30W Universal Power Supply
EXP-B thru E	4	SEC-R2R	Vykon	2 Reader, 4 UI, 4 DO Security Expansion Module
BATT-1,2	2	NP7-12	Energys	7AmpHr 12VDC Battery
CON F6	4	1757051	Phoenix	Green 5.08 6 Position Female Terminal
CON M6	1	1786213	Phoenix	Green 5.08 6 Position Male Terminal
FU1	1	ATQR-15	Ferraz Shaw mut	600VAC 15 Amp Slow -Blo Fuse
	1	USCC1	Ferraz Shaw mut	Fuse Holder
FU2,3	2	314002	Littel Fuse	120VAC 2.0 Amp Fast-Blo Fuse
PC	1	100404GY/100405GY	BestLink	7/10' CAT5e Ethernet Patch Cable
SO-1	1	SD-US/SC/LA/GY	Phoenix	Single Outlet
TX-1	1	TR50VA009	Functional Devices	120/208/240VAC/24VAC 50VA Transformer

TITLE: Dane County - Lyman F. Anderson A & C Center - Card Access System - DC PN 317039

DESCRIPTION: ENC-A002 – Sec. Network Controller SNC-02, EXP-B,C,D,E – Panel Detail & BOM

JOB #: 22181400010

DATE: 05/02/18

APPROVED BY: Steve Ferns

DATE: 03/13/2018

DRAWN BY: Mike Mittelsteadt

SCALE: NTS

FILENAME: Dane Co - Fen Oak - Access Dwg.vsd

REV. DESCRIPTION

**CBRE | ESI**

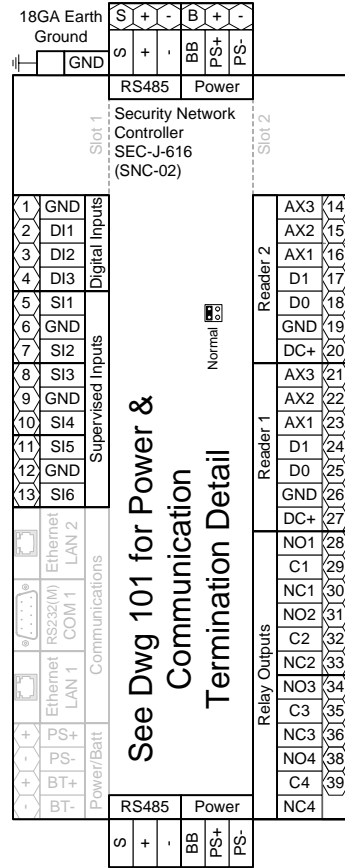
www.thinkESI.com

1-800-522-0372

Copyright 2003-2018 ESI. All rights reserved. Do not copy or duplicate without written permission.

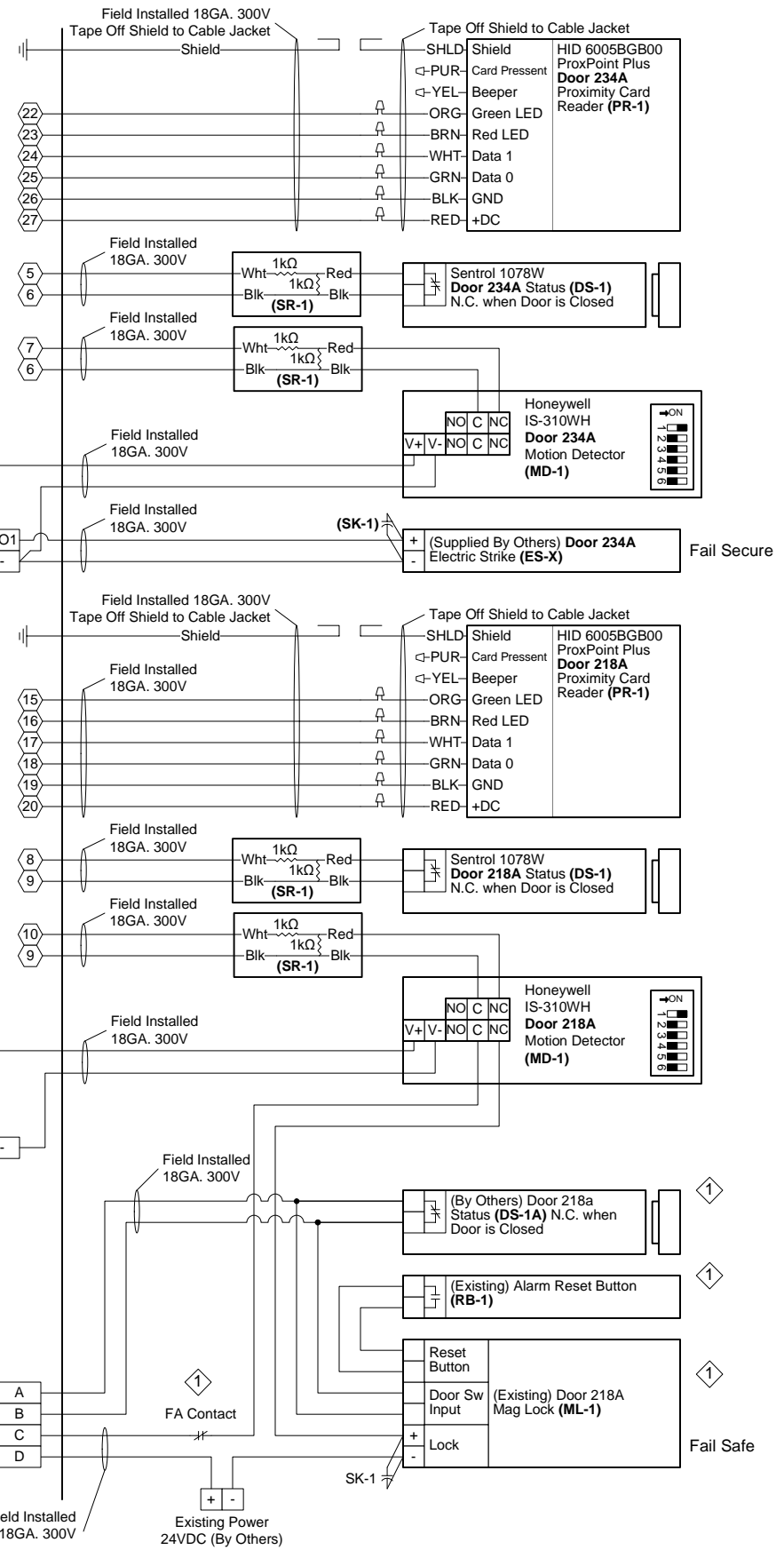
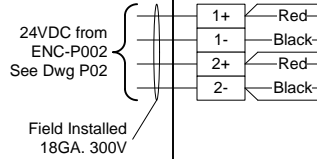
ENC-A002 – Security Network Controller SNC-02  
Doors 234A, 218A

From NCP-1  
See Dwg 200



To: EXP-B  
See Dwg 200b

See Dwg 101 for Power & Communication Termination Detail



Tag	Qty.	Part #	Mfg.	Description
DS-1	2	1078W	Sentrol (By Others)	N.O. Recessed Door Status (1" Dia.)
ES-X	2	By Others	By Others	Electric Door Strike
MD-1	2	IS-310WH	Honeywell (By Others)	Request to Exit - Motion Detector
PR-1	2	6005BGB00	HID (By Others)	Proximity Card Reader
SK-1	2	S4	Northern Computer	S-4 Suppressor Kit
SR-1	4	10747	Tridium	4-Lead Supervisory Resistor Pack
R-218A	1	RH2B-UL DC24V	IDEC	DPDT Relay w ith indicator
	1	SH2B-05	IDEC	Standard DIN Rail Mount
RB-1	1	Existing	Existing (By Others)	Alarm Reset Button
ML-1	1	Existing	Existing (By Others)	Mag Lock
DS-1A	1	Existing	Existing (By Others)	NC Door Status when door is closed

- NOTE: Cap off all unused wires/connections on all devices.
- NOTE: For all user activated devices, mount @ 48" above floor, per the American Disabilities Act, NFPA & all applicable codes.
- NOTE: It is the responsibility of the installer to properly configure the jumpers and switches on all field mounted devices.

TITLE:	Dane County - Lyman F. Anderson A & C Center - Card Access System - DC PN 317039
DESCRIPTION:	AENC-A002 – SNC-02 – Doors 234A, 218A – Termination Detail & BOM
JOB #:	22181400010
DRAWN BY:	Steve Ferns
DATE:	03/13/2018
DWG PAGE #:	200a
SCALE:	NTS
FILENAME:	Dane Co - Fen Oak - Access Dwg.vsd

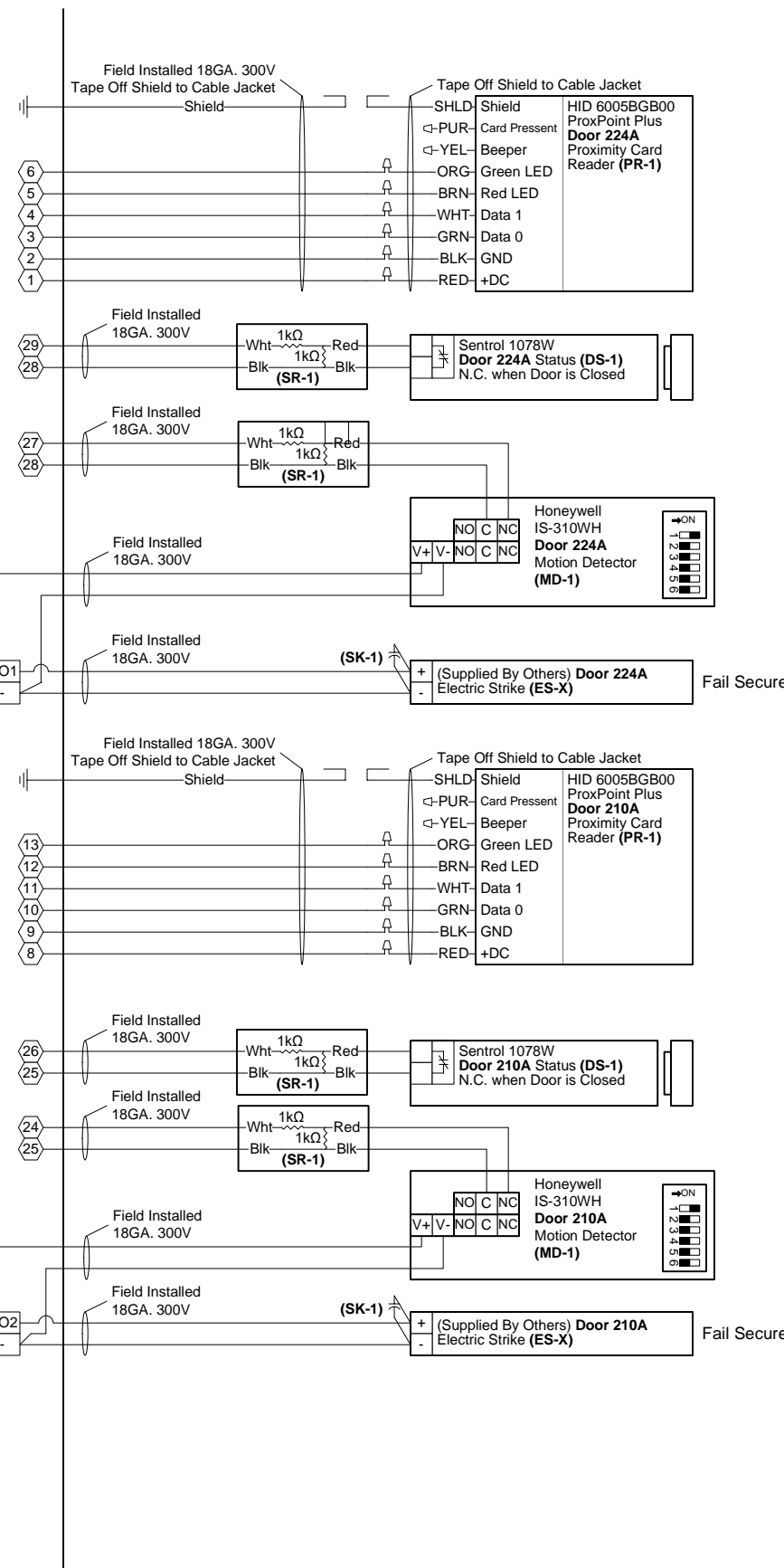
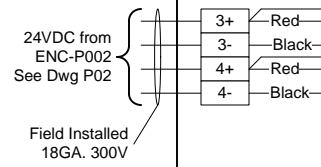
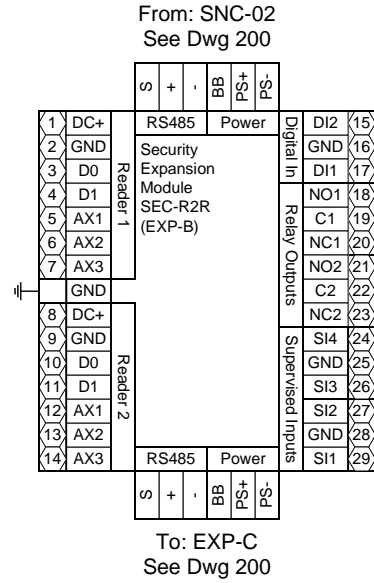
Engr Comments, Release for Electrical Bid

1-800-522-0372  
www.thinkESI.com  
Copyright 2003-2018 ESI. All rights reserved. Do not copy or duplicate without written permission.





ENC-A002 - SNC-02 EXP-B  
Doors 224A, 210A



Door 224A

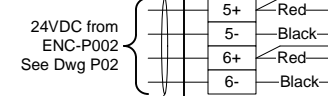
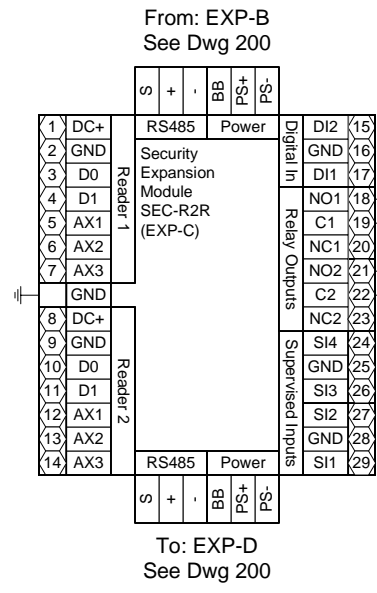
Door 210A

- 3 NOTE: Cap off all unused wires/connections on all devices.
- 5 NOTE: For all user activated devices, mount @ 48" above floor, per the American Disabilities Act, NFPA & all applicable codes.
- 6 NOTE: It is the responsibility of the installer to properly configure the jumpers and switches on all field mounted devices.

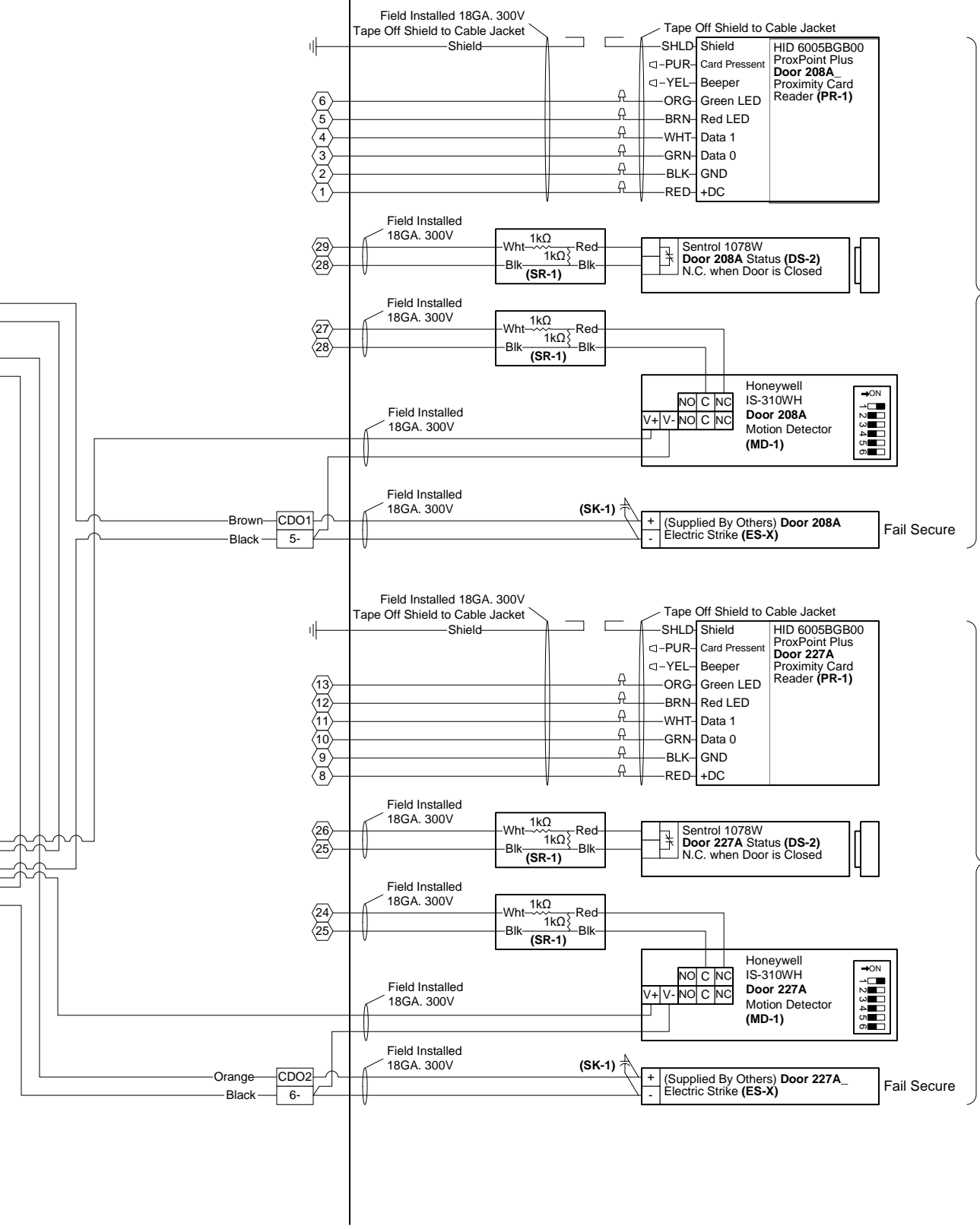
Field Devices - Bill of Material				
Tag	Qty.	Part #	Mfg.	Description
DS-1	2	1078W	Sentrol (By Others)	N.O. Recessed Door Status (1" Dia.)
ES-X	2	By Others	By Others	Electric Door Strike
MD-1	2	IS-310WH	Honeywell (By Others)	Request to Exit - Motion Detector
PR-1	2	6005BGB00	HID (By Others)	Proximity Card Reader
SK-1	2	S4	Northern Computer	S-4 Suppressor Kit
SR-1	4	10747	Tridium	4-Lead Supervisory Resistor Pack

<b>TITLE:</b> Dane County - Lyman F. Anderson A & C Center - Card Access System - DC PN 317039	
<b>DESCRIPTION:</b> ENC-A002 - SNC-02 EXP-B - Doors 224A, 210A - Termination Detail & BOM	
<b>JOB #:</b> 22181400010	<b>DATE:</b> 03/13/2018
<b>DRAWN BY:</b> Steve Ferns	<b>APPROVED BY:</b> Mike Mittelsteadt
<b>DWG PAGE #:</b> 200B	<b>FILENAME:</b> Dane Co - Fen Oak - Access Dwg.vsd
<b>REV.</b>	<b>DATE</b>
1	03/30/18
Engr Comments, Release for Electrical Bid	SEF
DESCRIPTION	BY

ENC-A002 - SNC-02 EXP-C  
Doors 208A, 227A



Field Installed 18GA. 300V



Door 208A

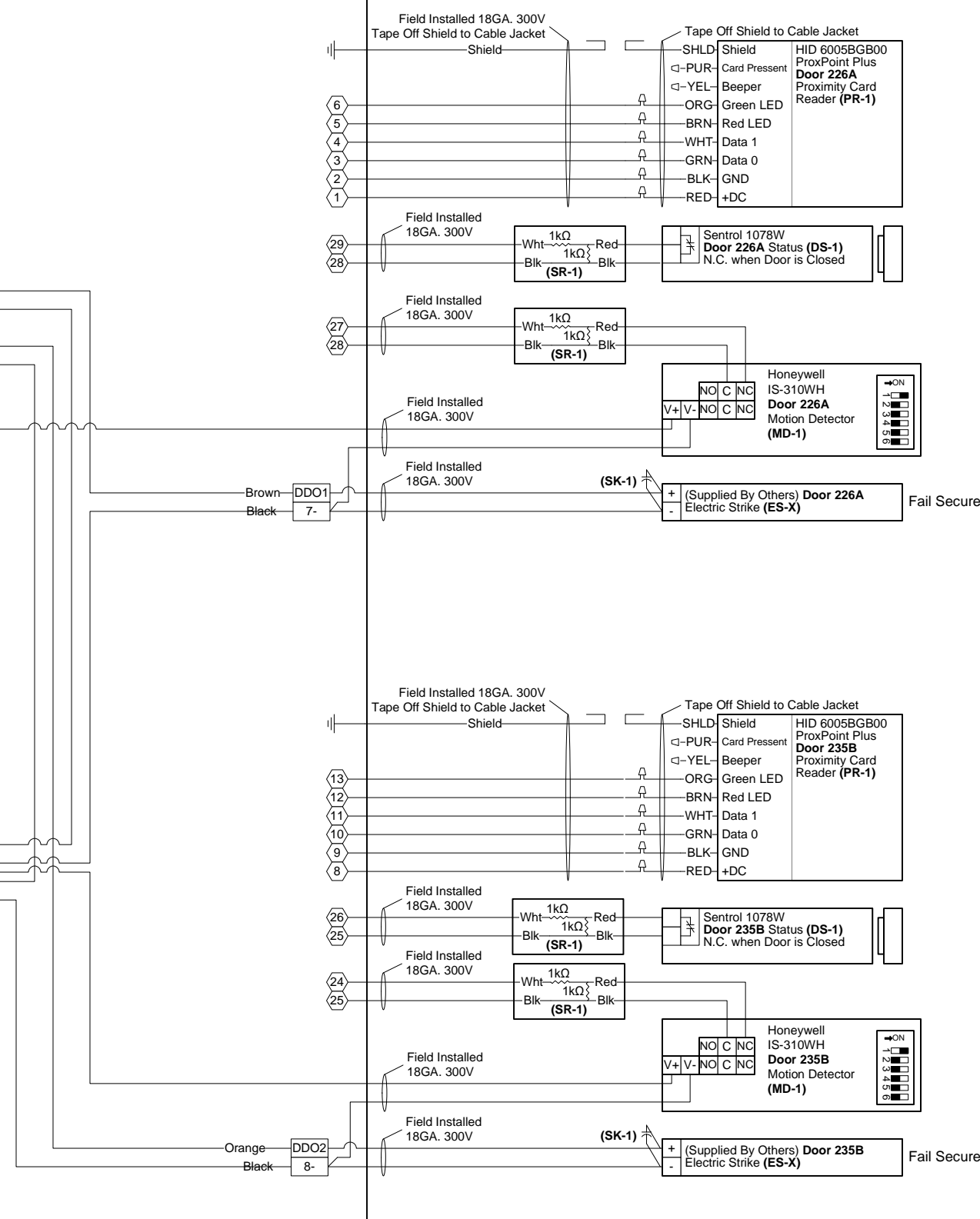
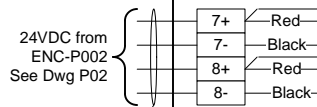
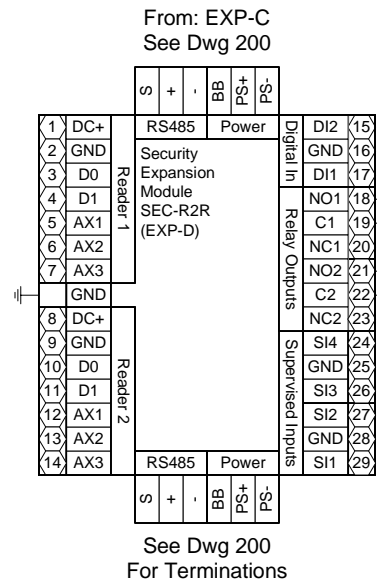
Door 227A

- 3 NOTE: Cap off all unused wires/connections on all devices.
- 5 NOTE: For all user activated devices, mount @ 48" above floor, per the American Disabilities Act, NFPA & all applicable codes.
- 6 NOTE: It is the responsibility of the installer to properly configure the jumpers and switches on all field mounted devices.

Field Devices - Bill of Material				
Tag	Qty.	Part #	Mfg.	Description
DS-1	2	1078W	Sentrol (By Others)	N.O. Recessed Door Status (1" Dia.)
ES-X	2	By Others	By Others	Electric Door Strike
MD-1	2	IS-310WH	Honeywell (By Others)	Request to Exit - Motion Detector
PR-1	2	6005BGB00	HID (By Others)	Proximity Card Reader
SK-1	2	S4	Northern Computer	S-4 Suppressor Kit
SR-1	4	10747	Tridium	4-Lead Supervisory Resistor Pack

<b>CBRE   ESI</b>		www.thinkESI.com	
1-800-522-0372		Copyright 2003-2018 ESI. All rights reserved. Do not copy or duplicate without written permission.	
Engr Comments, Release for Electrical Bid			
REV.	DATE	BY	DESCRIPTION
1	03/30/18	SEF	
DWG PAGE #: 200C			
SCALE: NTS			
DRAWN BY: Steve Ferns			
APPROVED BY: Mike Mittelsteadt			
DATE: 03/13/2018			
JOB #: 22181400010			
DESCRIPTION: ENC-A002 - SNC-02 EXP-C - Doors 208A, 227A - Termination Detail & BOM			
TITLE: Dane County - Lyman F. Anderson A & C Center - Card Access System - DC PN 317039			

ENC-A002 - SNC-02 EXP-D  
Doors 226A, 235B



- ⚠ NOTE: Cap off all unused wires/connections on all devices.
- ⚠ NOTE: For all user activated devices, mount @ 48" above floor, per the American Disabilities Act, NFPA & all applicable codes.
- ⚠ NOTE: It is the responsibility of the installer to properly configure the jumpers and switches on all field mounted devices.

Field Devices - Bill of Material				
Tag	Qty.	Part #	Mfg.	Description
DS-1	2	1078W	Sentrol (By Others)	N.O. Recessed Door Status (1" Dia.)
ES-X	2	By Others	By Others	Electric Door Strike
MD-1	2	IS-310WH	Honeywell (By Others)	Request to Exit - Motion Detector
PR-1	2	6005BGB00	HID (By Others)	Proximity Card Reader
SK-1	2	S4	Northern Computer	S-4 Suppressor Kit
SR-1	4	10747	Tridium	4-Lead Supervisory Resistor Pack

TITLE: Dane County - Lyman F. Anderson A & C Center - Card Access System - DC PN 317039

DESCRIPTION: ENC-A002 - SNC-02 EXP-D - Doors 226A, 235B - Termination Detail & BOM

JOB #: 22181400010

DATE: 03/13/2018

Engr Comments, Release for Electrical Bid

DRAWN BY: Steve Ferns

APPROVED BY: Mike Mittelsteadt

SCALE: NTS

FILENAME: Dane Co - Fen Oak - Access Dwg.vsd

DATE: 03/30/18

REV. 1

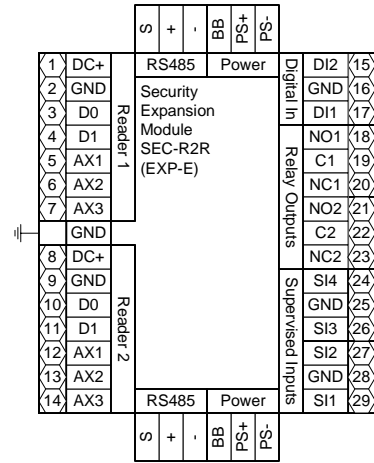
www.thinkESI.com

1-800-522-0372

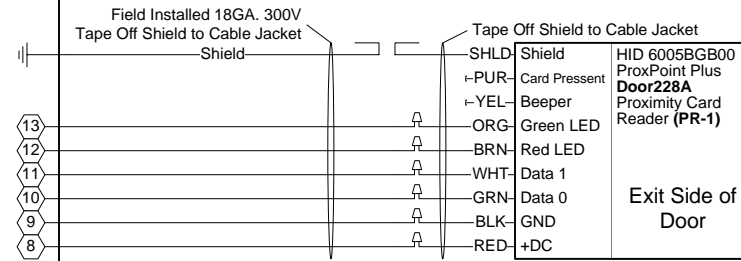
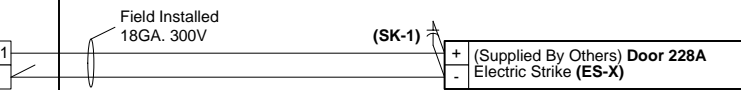
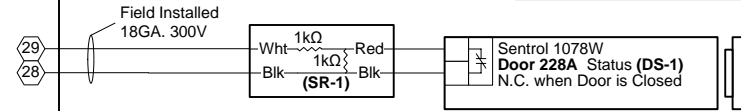
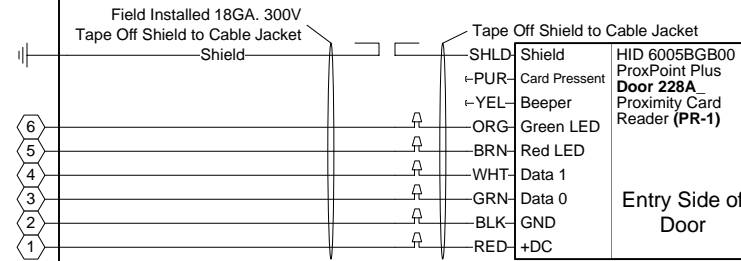
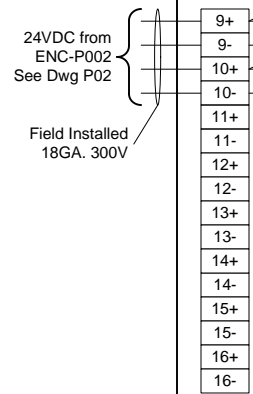
Copyright 2003-2018 ESI. All rights reserved. Do not copy or duplicate without written permission.

ENC-A002 - SNC-02 EXP-E  
Door 228A

From: EXP-D  
See Dwg 200



See Dwg 200



Door 228A

- 3 NOTE: Cap off all unused wires/connections on all devices.
- 5 NOTE: For all user activated devices, mount @ 48" above floor, per the American Disabilities Act, NFPA & all applicable codes.
- 6 NOTE: It is the responsibility of the installer to properly configure the jumpers and switches on all field mounted devices.

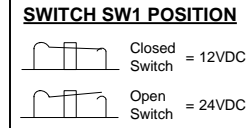
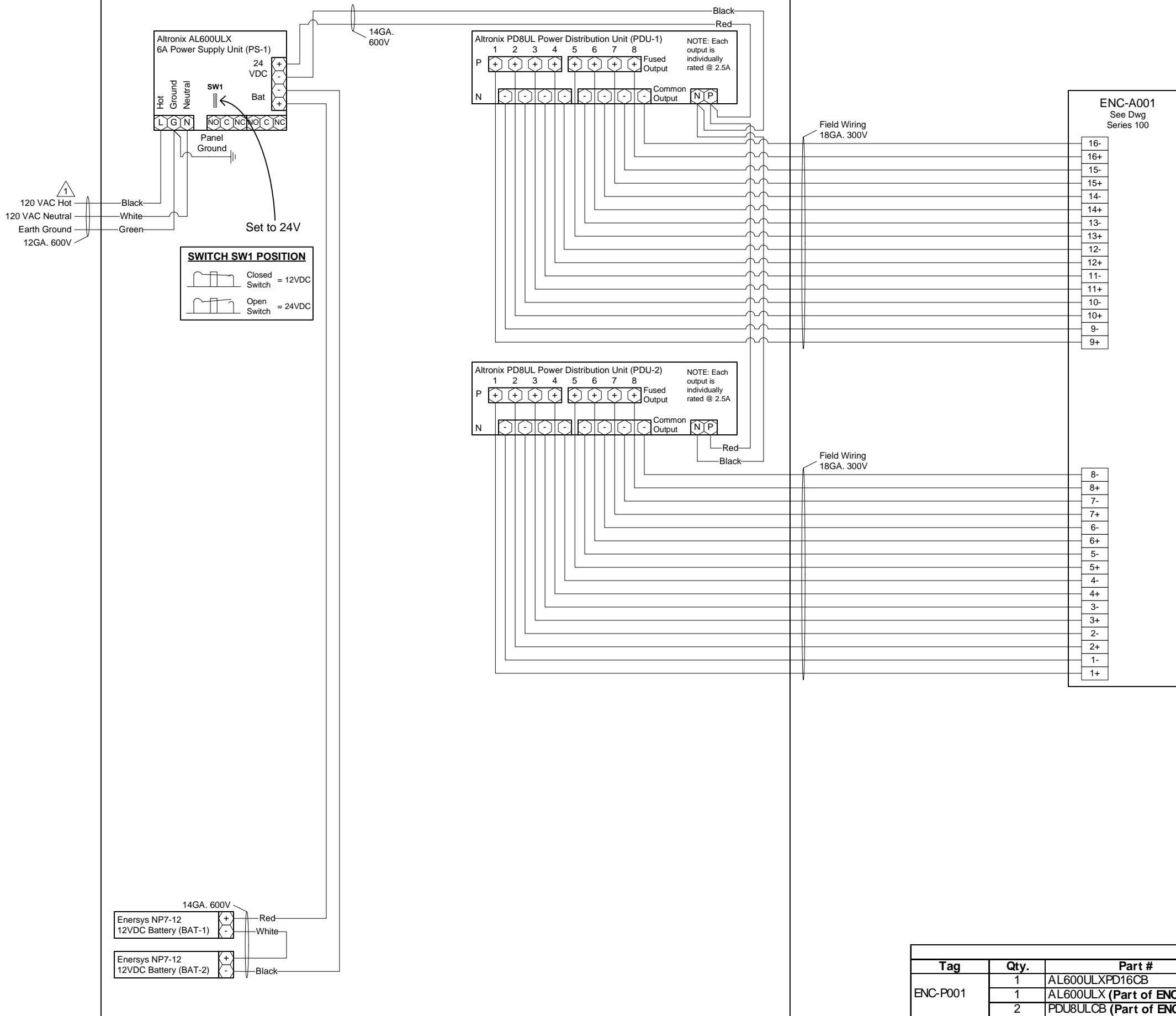
Field Devices - Bill of Material				
Tag	Qty.	Part #	Mfg.	Description
DS-1	1	1078W	Sentrol (By Others)	N.O. Recessed Door Status (1" Dia.)
ES-X	1	By Others	By Others	Electric Door Strike
PR-1	1	6005BGB00	HID (By Others)	Proximity Card Reader
SK-1	1	S4	Northern Computer	S-4 Suppressor Kit
SR-1	1	10747	Tridium	4-Lead Supervisory Resistor Pack

TITLE:	Dane County - Lyman F. Anderson A & C Center - Card Access System - DC PN 317039		
DESCRIPTION:	ENC-A002 - SNC-02 EXP-E - Doors 228A - Termination Detail & BOM		
JOB #:	22181400010	DATE:	03/13/2018
DRAWN BY:	Steve Ferns	APPROVED BY:	Mike Mittelsteadt
DWG PAGE #:	2006	SCALE:	NTS
REV.	DATE	BY	DESCRIPTION
1	05/02/18	SEF	Modified A Door Acc Equip Loc. Rel to Bid
2	03/30/18	SEF	Engr Comments, Release for Electrical Bid

**CBRE|ESI**  
www.thinkESI.com  
1-800-522-0372  
Copyright 2003-2018 ESI. All rights reserved. Do not copy or duplicate without written permission.

# ENC-P001 – Power Distribution Panel

Located: First Floor, Room 148. (See Client Engineer for Exact Location)



NOTE: Installer to Provide Main Disconnect and Branch Circuit Protection. 120 VAC to be supplied from a dedicated 20 Amp Branch Circuit, with separate Hot, Neutral and Green Equipment Grounding Conductor. Terminate Equipment Grounding Conductor at Branch Circuit Distribution Panel, to Panel Enclosure or Grounding Conductor by Approved Means.

Bill of Material				
Tag	Qty.	Part #	Mfg.	Description
ENC-P001	1	AL600ULXPD16CB	Altronix	Expandable Access/Fire Power Panel
	1	AL600ULX (Part of ENC-P001)	Altronix	120VAC/12/24VDC 6A Power Supply (PS-1)
	2	PDU8ULCB (Part of ENC-P001)	Altronix	24VAC/DC/12VDC @ 2.5A Power Distributor (PDU-1,2)
BAT-1,2	2	NP7-12	Energys	7AmpHr 12VDC Battery

**TITLE:** Dane County - Lyman F. Anderson A & C Center - Card Access System - DC PN 317039

**DESCRIPTION:** ENC-P001 - Access Control Power Distribution Panel - Termination Detail & BOM

**JOB #:** 22181400010

**DATE:** 03/13/2018

**Engr Comments, Release for Electrical Bid**

**APPROVED BY:** Mike Mittelsteadt

**SCALE:** NTS

**FILENAME:** Dane Co - Fen Oak - Access Dwg.vsd

**DATE:** 03/30/18

**BY:** SEF

**REV.:** 1

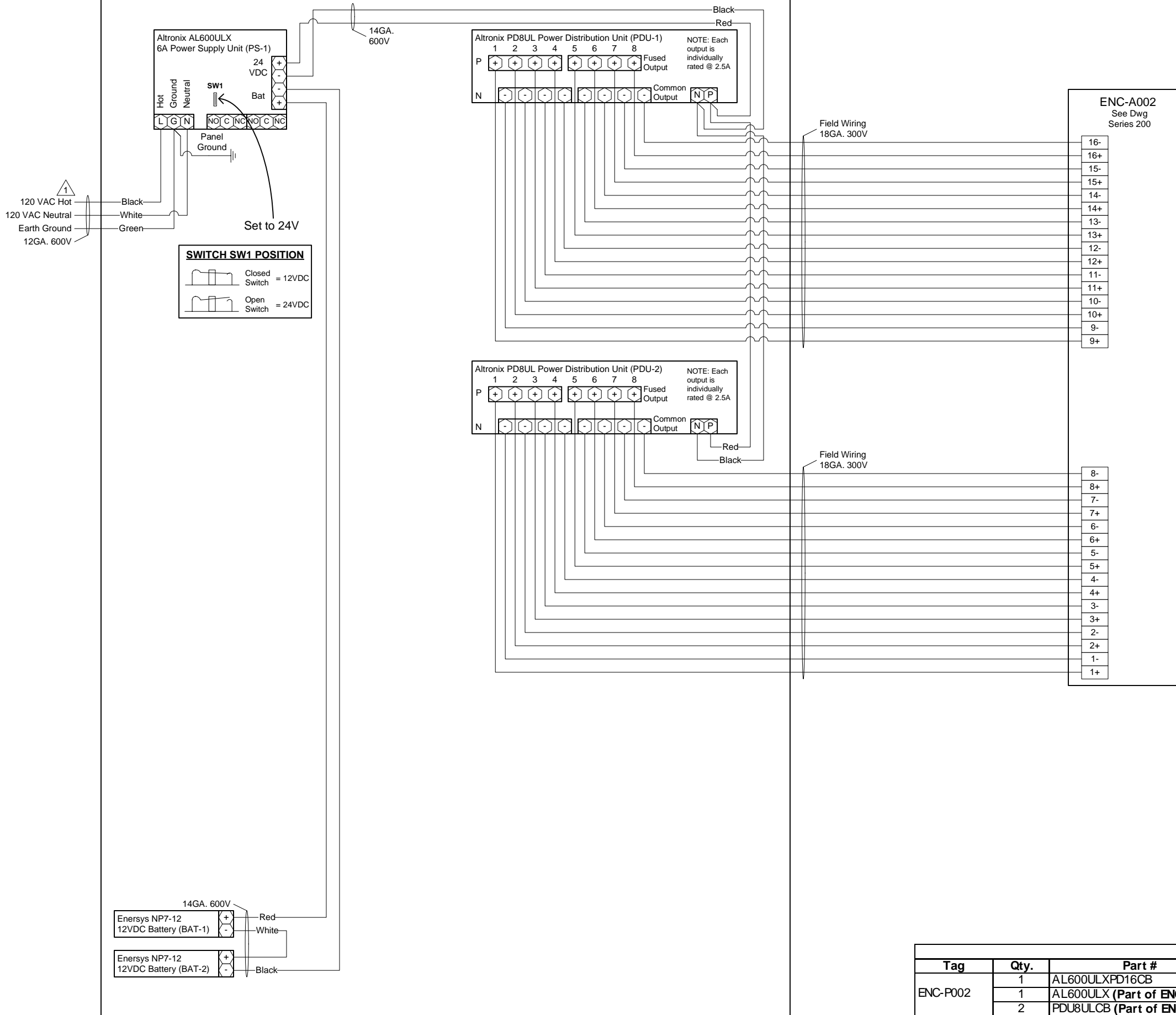
www.thinkESI.com

1-800-522-0372

Copyright 2003-2018 ESI. All rights reserved. Do not copy or duplicate without written permission.

# ENC-P002 – Power Distribution Panel

Located: Second Floor, Room 239. (See Owner Engineer for Exact Location)



NOTE: Installer to Provide Main Disconnect and Branch Circuit Protection. 120 VAC to be supplied from a dedicated 20 Amp Branch Circuit, with separate Hot, Neutral and Green Equipment Grounding Conductor. Terminate Equipment Grounding Conductor at Branch Circuit Distribution Panel, to Panel Enclosure or Grounding Conductor by Approved Means.

Bill of Material				
Tag	Qty.	Part #	Mfg.	Description
ENC-P002	1	AL600ULXPD16CB	Altronix	Expandable Access/Fire Power Panel
	1	AL600ULX (Part of ENC-P002)	Altronix	120VAC/12/24VDC 6A Power Supply (PS-1)
	2	PDU8ULCB (Part of ENC-P002)	Altronix	24VAC/DC/12VDC @ 2.5A Power Distributor (PDU-1,2)
BAT-1,2	2	NP7-12	Energys	7AmpHr 12VDC Battery

**TITLE:** Dane County - Lyman F. Anderson A & C Center - Card Access System - DC PN 317039

**DESCRIPTION:** ENC-P002 - Access Control Power Distribution Panel - Termination Detail & BOM

**JOB #:** 22181400010

**DATE:** 03/13/2018

**Engr Comments, Release for Electrical Bid**

**APPROVED BY:** Mike Mittelsteadt

**SCALE:** NTS

**FILENAME:** Dane Co - Fen Oak - Access Dwg.vsd

**DATE:** 03/30/18

**BY:** SEF

**REV.:** 1

**CBRESI**  
www.thinkESI.com

1-800-522-0372  
Copyright 2003-2018 ESI. All rights reserved. Do not copy or duplicate without written permission.

ACCESS CONTROL SCHEDULE																
Door Number	Door Name	Entering From:	Door Config.	Use (Exterior/Interior)	Fail Mode (Safe/Secure)	Strike (Elec / Mag Lock)	RDR New	RDR Demo	DPS New	RTE New	STK New	HDCP	Misc. Auxiliary Controls:	NC, Trunk & Controller Address		Power Panel #:
														SNC:	Module	
<b>ENC-A001 (First Floor)</b>																
101A	Front Door West	Outside	Double	Exterior	Secured	Electric Strike	-	-	X	-	-	-	Outside front double doors lock on timer control; Demo mag lock & repair holes / finish; add rim strike. (Work by others) ①	ENC-A001	SNC-01	ENC-P001
101B	Front Door East	Outside	Double	Exterior	Secured	Electric Strike	X	X	X	X	-	X	Outside front double doors lock on timer control; Install one RTE to serve both doors; Three handicap switches (Interior, Vestibule, Exterior) are existing and shall remain; Verify there are two sets of contacts in each switch, if there are not two sets of contacts, to be provided by owner; Run wire (2-conductor, 18 gauge) from interior handicap switch to 1st floor control panel. (Work by Others) ①	ENC-A001	SNC-01	ENC-P001
112A	Back Door	Vestibule 112	Single	Exterior	Secured	Electric Strike	X	X	X	X	X	-		ENC-A001	EXP-B	ENC-P001
114A	1st Floor Storage	Corridor 122	Single	Interior	Secured	Electric Strike	X	-	X	X	X	-		ENC-A001	EXP-B	ENC-P001
119A	UWEX Rear	Corridor 122	Single	Interior	Secured	Electric Strike	X	-	X	X	X	-		ENC-A001	EXP-C	ENC-P001
121B	Room 121 West	Corridor 122	Single	Interior	Secured	Electric Strike	X	-	X	X	X	-		ENC-A001	EXP-C	ENC-P001
121C	Room 121 East	Corridor 122	Single	Interior	Secured	Electric Strike	X	-	X	X	X	-		ENC-A001	EXP-D	ENC-P001
138A	UWEX Main	Corridor 102	Single	Interior	Secured	Electric Strike	X	-	X	X	X	-		ENC-A001	EXP-D	ENC-P001
140A	Conference Room C	Corridor 142	Single	Interior	Secured	Electric Strike	X	-	X	X	X	-		ENC-A001	EXP-E	ENC-P001
145A	Class Room A	Corridor 142	Single	Interior	Secured	Electric Strike	X	-	X	X	X	-		ENC-A001	EXP-E	ENC-P001
146B	Class Room B	Corridor 142	Single	Interior	Secured	Electric Strike	X	-	X	X	X	-		ENC-A001	EXP-F	ENC-P001
144A	Kitchen	Corridor 142	Single	Interior	Secured	Electric Strike	X	-	X	X	X	-		ENC-A001	EXP-F	ENC-P001
116A	First Floor Stair Entry	Corridor 111	Single	Interior	Secured	Electric Strike	X	-	X	X	X	-		ENC-A001	EXP-G	ENC-P002
<b>ENC-A002 (Second Floor)</b>																
208A	LWRD Main	Lobby 201	Single	Interior	Secured	Electric Strike	X	-	X	X	X	-		ENC-A002	SNC-02	ENC-P002
210A	Monona Conference Room	Corridor 219	Single	Interior	Secured	Electric Strike	X	-	X	X	X	-		ENC-A002	SNC-02	ENC-P002
217A	LWRD Rear	Stairway 2	Single	Interior	Secured	Electric Strike	X	-	X	X	X	-		ENC-A002	EXP-B	ENC-P002
218A	LWRD Fire Door	Corridor 219	Single	Interior	Secured	Existing Mag Lock	X	-	X	X	X	-	Override local alarm; Need to get Madison Fire Inspector's direction & approval before determining how egress door is controlled & alarmed. By Owner. (Work By others) ①	ENC-A002	EXP-B	ENC-P002
224B	Mendota Conference Room	Corridor 219	Single	Interior	Secured	Electric Strike	X	-	X	X	X	-		ENC-A002	EXP-C	ENC-P002
226A	Kegonsa Conference Room	Lobby 201	Single	Interior	Secured	Electric Strike	X	-	X	X	X	-		ENC-A002	EXP-C	ENC-P002
227A	LWRD North	Lobby 201	Single	Interior	Secured	Electric Strike	X	-	X	X	X	-		ENC-A002	EXP-D	ENC-P002
228A	FSA West	Coffee Rm 231 & Open Office 228	Single	Interior	Secured	Electric Strike	X (2)	-	X	-	X	-	Access Required in both directions	ENC-A002	EXP-D	ENC-P002
234A	FSA Main	FSA Entry Room 234	Single	Interior	Secured	Electric Strike	X	-	X	X	X	-		ENC-A002	EXP-E	ENC-P002
235B	FSA Conference Room	FSA Entry Room 234	Single	Interior	Secured	Electric Strike	X	-	X	X	X	-		ENC-A002	EXP-F	ENC-P001

①  
③  
③

KEY for S01 - Access Control Schedule			
<b>Bold Rows =</b>	Indicate Alternate Bid #1 locations	DPS New =	Provide new door position switch
Number =	Location as detailed on floor plans	RTE New =	Provide new request to exit device
RDR New =	Provide new card reader	STK New =	Provide new electric door strike
RDR Demo =	Demo existing Card Reader	HDCP =	Interface with existing handicap buttons and door openers

TITLE: Dane County - Lyman F. Anderson A & C Center - Card Access System - DC PN 317039

DESCRIPTION: Access Control Door Schedule

JOB #: 22181400010

DATE: 03/13/2018

APPROVED BY: Mike Mittelsteadt

SCALE: NTS

FILENAME: Dane Co - Fen Oak - Access Dwg.vsd

Modified A Door Acc Equip Loc, Rel to Bid

Engr Comments, Rel. for Electrical Bid

DATE: 05/02/18

DATE: 03/30/18

REV. ③

REV. ①

DESCRIPTION

1-800-522-0372

www.thinkESI.com

Copyright 2009-2018 ESI. All rights reserved. Do not copy or duplicate without written permission.

**CBRE|ESI**


Owner Provided Information

Door Number	Door Name	RDR New	RDR Demo	DPS New	RTE New	STK New	HDCP	Work by Owner	Notes	Door Number
101A	Front Door West	--	--	X	--	--	--	No work	Front double doors lock on timer control; demo mag lock & repair holes / finish; add rim strike	101A
101B	Front Door East	X	X	X	X	--	X	No work	Install RTE to serve both doors; handicap switches are existing to remain; verify there are two sets of contacts in switch	101B
112A	Back Door	X	X	X	X	X	--	No work		112A
114A	1st Floor Storage	X	--	X	X	X	--	No work		114A
119A	UWEX Rear	X	--	X	X	X	--	Furnish & install new lever handle		119A
<b>121B</b>	Room 121 West	<b>X</b>	--	<b>X</b>	<b>X</b>	<b>X</b>	--	<b>Furnish &amp; install closer</b>		<b>121B</b>
121C	Room 121 East	X	--	X	X	X	--	Furnish & install closer; demo electronic key pad		121C
138A	UWEX Main	X	--	X	X	X	--	Furnish & install new lever handle		138A
140A	Conference Room C	X	--	X	X	X	--	Furnish & install closer		140A
145A	Class Room A	X	--	X	X	X	--	Furnish & install closer		142A
146B	Class Room B	X	--	X	X	X	--	Furnish & install closer		142B
144A	Kitchen	X	--	X	X	X	--	Furnish & install closer		144A
208A	LWRD Main	X	--	X	X	X	--	Furnish & install new lever handle		208A
210A	Monona Conference Room	X	--	X	X	X	--	Furnish & install closer		210A
217A	LWRD Rear	X	--	X	X	X	--	Lock handle position & disable small button		217A
218A	LWRD Fire Door	X	--	X	X	X	--	Need to get Madison Fire Inspector's direction & approval before determining how egress door is controlled & alarmed	Override local alarm; Need to get Madison Fire Inspector's direction & approval before determining how egress door is controlled & alarmed	218A
224B	Mendota Conference Room	X	--	X	X	X	--	Furnish & install closer		224B
226A	Kegonsa Conference Room	X	--	X	X	X	--	Furnish & install closer		226A
227A	LWRD North	X	--	X	X	X	--	Furnish & install new lever handle		227A
<b>228A</b>	FSA West	<b>X (2)</b>	--	<b>X</b>	--	<b>X</b>	--	<b>Furnish &amp; install new lever handle &amp; lever latch? Lance to determine need</b>	<b>Access required in both directions; 2 PCR's</b>	<b>228A</b>
234A	FSA Main	X	--	X	X	X	--	Furnish & install new lever handle		234A
<b>235B</b>	FSA Conference Room	<b>X</b>	--	<b>X</b>	<b>X</b>	<b>X</b>	--	<b>Furnish &amp; install new lever handle</b>		<b>235B</b>

KEY:	
<b>Bold Rows</b> = Indicate Alternate bid #1 locations	DPS New = Provide new door position switch
Number = Location as detailed on floor plans	RTE New = Provide new request to exit device
RDR New = Provide new card reader	STK New = Provide new electric door strike
RDR Demo = Demo existing card reader	HDCP = Interface with existing handicap buttons and door openers

③ See DWG S01 for changes due to movement of Access Control Equipment from Door 217A to Door 117A

TITLE: Dane County - Lyman F. Anderson A & C Center - Card Access System - DC PN 317039  
 DESCRIPTION: Owner Provided Information  
 DRAWN BY: Steve Ferns  
 SCALE: NTS  
 APPROVED BY: Mike Mittelsteadt  
 DATE: 03/13/2018  
 JOB #: 22181400010  
 DWG PAGE #: Owner Annex  
 BY: SEF  
 DATE: 05/02/18  
 DESCRIPTION: Modified A Door Acc Equip Loc, Rel to Bid 22181400010  
 REV. ③ Owner Provided Info, Release for Elect. Bid  
 REV. ②



1-800-522-0372  
 www.thinkESI.com  
 Copyright 2003-2018 ESI. All rights reserved. Do not copy or duplicate without written permission.