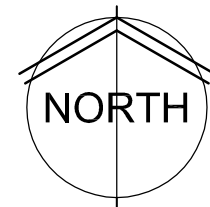


OVERALL SITE PLAN

0 10' 20' 40'
SCALE: 1" = 20'



SITE PLAN NOTES

1. PRIOR TO STARTING CONSTRUCTION THE CONTRACTOR SHALL BE RESPONSIBLE TO MAKE SURE THAT ALL REQUIRED PERMITS AND APPROVALS HAVE BEEN OBTAINED. NO CONSTRUCTION OR FABRICATION SHALL BEGIN UNTIL THE CONTRACTOR HAS RECEIVED AND THOROUGHLY REVIEWED ALL PLANS AND OTHER DOCUMENTS APPROVED BY ALL OF THE PERMITTING AUTHORITIES.
2. ALL WORK SHALL BE PERFORMED IN ACCORDANCE WITH THESE PLANS, SPECIFICATIONS AND THE REQUIREMENTS AND STANDARDS OF THE LOCAL GOVERNING AUTHORITY. THE SOILS REPORT, IF AVAILABLE, AND RECOMMENDATIONS SET FORTH THEREIN ARE A PART OF THE REQUIRED CONSTRUCTION DOCUMENTS AND TAKE PRECEDENCE UNLESS SPECIFICALLY NOTED OTHERWISE ON THE PLANS. THE CONTRACTOR SHALL NOTIFY THE CONSTRUCTION MANAGER OF ANY DISCREPANCY THAT MAY EXIST BETWEEN SOILS REPORT AND PLANS.
3. THE A.L.T.A. SURVEY SHALL BE CONSIDERED A PART OF THESE PLANS. THE GENERAL CONTRACTOR IS RESPONSIBLE FOR LOCATING IMPROVEMENTS PER THESE PLANS.
4. UNDERGROUND FACILITIES, STRUCTURES AND UTILITIES HAVE BEEN DRAWN FROM AVAILABLE RECORDS. THEREFORE, THE RELATIONSHIP BETWEEN PROPOSED WORK AND EXISTING FACILITIES, STRUCTURES AND UTILITIES MUST BE CONSIDERED APPROXIMATE AND IT IS THE CONTRACTOR'S RESPONSIBILITY TO DETERMINE THEIR EXACT LOCATION AND THE EXISTENCE OF ANY NOT SHOWN BY CONTACTING THE UTILITY LOCATOR SERVICE A MINIMUM OF 48 HOURS PRIOR TO THE COMMENCEMENT OF DIGGING OPERATIONS. NO COMPENSATION SHALL BE PAID TO THE CONTRACTOR FOR DAMAGE AND REPAIR TO THESE FACILITIES CAUSED BY HIS WORK FORCE.
5. ALL DIMENSIONS AND GRADES SHOWN ON THE PLANS SHALL BE FIELD VERIFIED BY THE CONTRACTOR PRIOR TO CONSTRUCTION. CONTRACTOR SHALL NOTIFY THE CONSTRUCTION MANAGER IF ANY DISCREPANCIES EXIST TO OBTAIN ANY NECESSARY CHANGES. PRIOR TO PROCEEDING WITH CONSTRUCTION, NO EXTRA COMPENSATION SHALL BE PAID TO THE CONTRACTOR FOR WORK HAVING TO BE REDONE DUE TO DIMENSIONS OR GRADES SHOWN INCORRECTLY ON THESE PLANS IF SUCH NOTIFICATION HAS NOT BEEN GIVEN.
6. ALL DIMENSIONS ARE FROM FRONT OF CURB UNLESS NOTED OTHERWISE.
7. ALL WRITTEN DIMENSIONS SHALL TAKE PRECEDENCE OVER SCALED DIMENSIONS.
8. SEE ARCHITECTURAL PLANS FOR BUILDING DIMENSIONS.
9. CONTRACTOR IS TO PROVIDE ALL SAFETY BARRIERS, FENCING ETC. AROUND CONSTRUCTION SITE AS REQUIRED BY LOCAL REGULATIONS. CONTRACTOR SHALL USE SAFETY FENCE TO PROTECT CUSTOMERS FROM CONSTRUCTION ACTIVITIES.
10. WORK WHICH WILL CAUSE THE CLOSING OF A STREET OR BLOCK A DIRECTION OF TRAVEL ON EXPRESSWAYS, PRINCIPAL ARTERIAL, MINOR ARTERIAL, AND COLLECTOR STREETS, SHALL REQUIRE A NOTICE OF CLOSURE TO BE SUBMITTED FORTY-EIGHT (48) HOURS IN ADVANCE OF THE STREET CLOSURE TO THE TRAFFIC ENGINEER. THE NOTICE OF CLOSURE SHALL SPECIFY THE PURPOSE OF CLOSURE, THE LOCATION, THE PLANNED DURATION AND THE HOURS OF THE DAY DURING WHICH THE STREET WILL BE CLOSED. THE CLOSURE SHALL BE SCHEDULED TO MINIMIZE INTERFERENCE WITH VEHICULAR AND PEDESTRIAN TRAFFIC.
11. THE CONTRACTOR SHALL RESTORE TO THE ORIGINAL CONDITION, ADJACENT (OFF-SITE) PROPERTY DISTURBED BY HIS OPERATIONS. REFER TO ARCHITECTURAL DRAWINGS FOR LOCATIONS.
12. COORDINATES SHOWN ARE BASED OFF SURVEY COORDINATE SYSTEM.

LAYOUT LEGEND

	PROPERTY LINE
	CONTROL JOINT (C.J.)
	EXPANSION JOINT (E.J.)
	NEW CONCRETE PAVING
	POINT OF BEGINNING
	LANDSCAPE BOULDERS



WDM Architects P.A.
105 North Washington
Wichita, KS 67202-2815
T 316.262.4700
F 316.262.0002
wdmarchitects.com



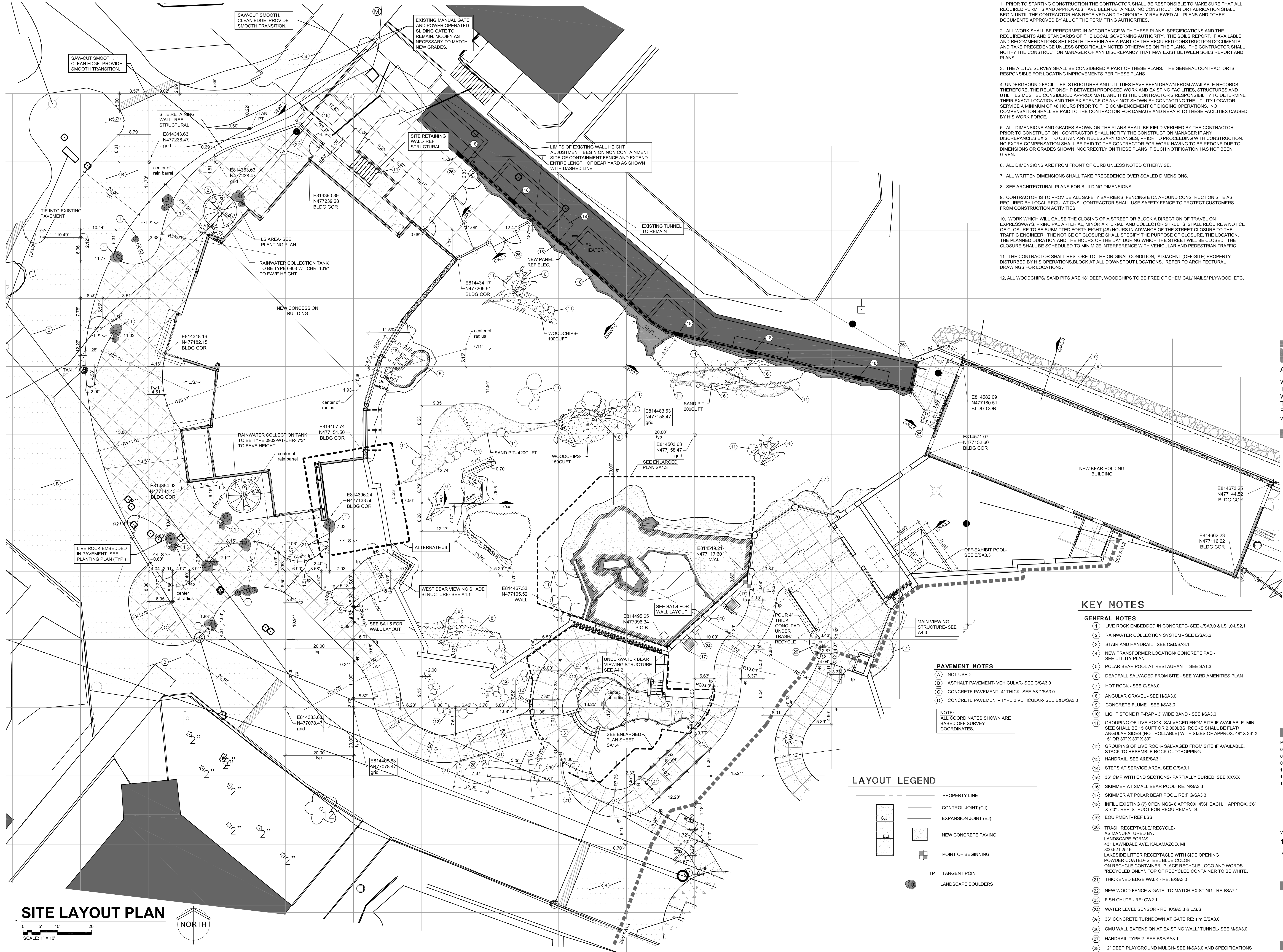
ARCTIC ANIMAL EXHIBIT AND CONCESSIONS
RFB No. 313086
Henry Vilas Zoo - County of Dane
Henry Vilas Zoo - Department of Public Works
702 S Randall Ave
Madison, Wisconsin

PRINTS ISSUED
07.26.2013 - Schematic Design
08.23.2013 - Design Development
09.23.2013 - 65% CD's
10.07.2013 - Pricing Set
10.21.2013 - 95% CD's
11.13.2013 - Bid Documents

WDM No. 13046
drawn: NS
checked: SR

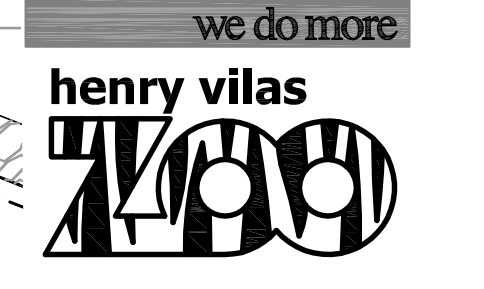
SITE LAYOUT PLAN

SA1.0



SITE PLAN NOTES

1. PRIOR TO STARTING CONSTRUCTION THE CONTRACTOR SHALL BE RESPONSIBLE TO MAKE SURE THAT ALL REQUIRED PERMITS AND APPROVALS HAVE BEEN OBTAINED. NO CONSTRUCTION OR FABRICATION SHALL BEGIN UNTIL THE CONTRACTOR HAS RECEIVED AND THOROUGHLY REVIEWED ALL PLANS AND OTHER DOCUMENTS APPROVED BY ALL OF THE PERMITTING AUTHORITIES.
2. ALL WORK SHALL BE PERFORMED IN ACCORDANCE WITH THESE PLANS, SPECIFICATIONS AND THE REQUIREMENTS AND STANDARDS OF THE LOCAL GOVERNING AUTHORITY. THE SOILS REPORT, IF AVAILABLE, AND RECOMMENDATIONS SET FORTH THEREIN ARE A PART OF THE REQUIRED CONSTRUCTION DOCUMENTS AND TAKE PRECEDENCE UNLESS SPECIFICALLY NOTED OTHERWISE ON THE PLANS. THE CONTRACTOR SHALL NOTIFY THE CONSTRUCTION MANAGER OF ANY DISCREPANCY THAT MAY EXIST BETWEEN SOILS REPORT AND PLANS.
3. THE A.L.T.A. SURVEY SHALL BE CONSIDERED A PART OF THESE PLANS. THE GENERAL CONTRACTOR IS RESPONSIBLE FOR LOCATING IMPROVEMENTS PER THESE PLANS.
4. UNDERGROUND FACILITIES, STRUCTURES AND UTILITIES HAVE BEEN DRAWN FROM AVAILABLE RECORDS. THEREFORE, THE RELATIONSHIP BETWEEN PROPOSED WORK AND EXISTING FACILITIES, STRUCTURES AND UTILITIES MUST BE CONSIDERED APPROXIMATE AND IT IS THE CONTRACTOR'S RESPONSIBILITY TO DETERMINE THEIR EXACT LOCATION AND THE EXISTENCE OF ANY NOT SHOWN BY CONTACTING THE UTILITY LOCATOR SERVICE A MINIMUM OF 48 HOURS PRIOR TO THE COMMENCEMENT OF DIGGING OPERATIONS. NO COMPENSATION SHALL BE PAID TO THE CONTRACTOR FOR DAMAGE AND REPAIR TO THESE FACILITIES CAUSED BY HIS WORK FORCE.
5. ALL DIMENSIONS AND GRADES SHOWN ON THE PLANS SHALL BE FIELD VERIFIED BY THE CONTRACTOR PRIOR TO CONSTRUCTION. CONTRACTOR SHALL NOTIFY THE CONSTRUCTION MANAGER IF ANY DISCREPANCIES EXIST TO OBTAIN ANY NECESSARY CHANGES. PRIOR TO PROCEEDING WITH CONSTRUCTION, THE CONTRACTOR SHALL NOTIFY THE CONSTRUCTION MANAGER OF ANY DISCREPANCY THAT MAY EXIST BETWEEN SOILS REPORT AND PLANS.
6. ALL DIMENSIONS ARE FROM FRONT OF CURB UNLESS NOTED OTHERWISE.
7. ALL WRITTEN DIMENSIONS SHALL TAKE PRECEDENCE OVER SCALED DIMENSIONS.
8. SEE ARCHITECTURAL PLANS FOR BUILDING DIMENSIONS.
9. CONTRACTOR IS TO PROVIDE ALL SAFETY BARRIERS, FENCING ETC. AROUND CONSTRUCTION SITE AS REQUIRED BY LOCAL REGULATIONS. CONTRACTOR SHALL USE SAFETY FENCE TO PROTECT CUSTOMERS FROM CONSTRUCTION ACTIVITIES.
10. WORK WHICH WILL CAUSE THE CLOSING OF A STREET OR BLOCK A DIRECTION OF TRAVEL ON EXPRESSWAYS, PRINCIPAL ARTERIAL, MINOR ARTERIAL, AND COLLECTOR STREETS, SHALL REQUIRE A NOTICE OF CLOSURE TO BE SUBMITTED FORTY-EIGHT (48) HOURS IN ADVANCE OF THE STREET CLOSURE TO THE TRAFFIC ENGINEER. THE NOTICE OF CLOSURE SHALL SPECIFY THE PURPOSE OF CLOSURE, THE LOCATION, THE PLANNED DURATION AND THE HOURS OF THE DAY DURING WHICH THE STREET WILL BE CLOSED. THE CLOSURE SHALL BE SCHEDULED TO MINIMIZE INTERFERENCE WITH VEHICULAR AND PEDESTRIAN TRAFFIC.
11. THE CONTRACTOR SHALL RESTORE TO THE ORIGINAL CONDITION, ADJACENT (OFF-SITE) PROPERTY DISTURBED BY HIS OPERATIONS. BLOCK AT ALL DOWNSPOUT LOCATIONS. REFER TO ARCHITECTURAL DRAWINGS FOR LOCATIONS.
12. ALL WOODCHIPS/ SAND PITS ARE 18" DEEP. WOODCHIPS TO BE FREE OF CHEMICAL/ NAILS/ PLYWOOD, ETC.



ARCTIC ANIMAL EXHIBIT AND CONCESSIONS
 RFB No. 313086
 Henry Vilas Zoo - County of Dane
 Department of Public Works
 1919 Alliant Energy Center Way
 Madison, Wisconsin

PRINTS ISSUED
 07.26.2013 - Schematic Design
 08.23.2013 - Design Development
 09.23.2013 - 65% CD's
 10.07.2013 - Pricing Set
 10.21.2013 - 95% CD's
 11.13.2013 - Bid Documents

WDM No. 13046
 drawn: NS
 checked: SR

SA1.1

KEY NOTES

- GENERAL NOTES**
- 1 LIVE ROCK EMBEDDED IN CONCRETE- SEE J/SA3.0 & L/S1.0-L/S2.1
 - 2 RAINWATER COLLECTION SYSTEM- SEE E/SA3.2
 - 3 STAIR AND HANDRAIL- SEE C&D/SA3.1
 - 4 NEW TRANSFORMER LOCATION/ CONCRETE PAD- SEE UTILITY PLAN
 - 5 POLAR BEAR POOL AT RESTAURANT- SEE SA1.3
 - 6 DEADFALL SALVAGED FROM SITE- SEE YARD AMENITIES PLAN
 - 7 HOT ROCK- SEE G/SA3.0
 - 8 ANGULAR GRAVEL- SEE H/SA3.0
 - 9 CONCRETE FLUME- SEE I/SA3.0
 - 10 LIGHT STONE RIP-RAP- 3" WIDE BAND- SEE I/SA3.0
 - 11 GROUPING OF LIVE ROCK- SALVAGED FROM SITE IF AVAILABLE. MIN. SIZE SHALL BE 15 CUFT OR 2,000 LBS. ROCKS SHALL BE FLAT/ ANGULAR SIDES (NOT ROLLABLE) WITH SIDES OF APPROX. 48" X 36" X 15" OR 30" X 30" X 30".
 - 12 GROUPING OF LIVE ROCK- SALVAGED FROM SITE IF AVAILABLE. STACK TO RESEMBLE ROCK OUTCROPPING
 - 13 HANDRAIL- SEE A/E/SA3.1
 - 14 STEPS AT SERVICE AREA. SEE G/SA3.1
 - 15 36" CMP WITH END SECTIONS-PARTIALLY BURIED. SEE XXXX
 - 16 SKIMMER AT SMALL BEAR POOL- RE: N/SA3.3
 - 17 SKIMMER AT POLAR BEAR POOL- RE: F/SA3.3
 - 18 INFILL EXISTING (7) OPENINGS- APPROX. 4'X4' EACH. 1 APPROX. 36" X 70". REF. STRUCT FOR REQUIREMENTS.
 - 19 EQUIPMENT- REF LSS
 - 20 TRASH RECEPTACLE/ RECYCLE- AS MANUFACTURED BY: LANDSCAPE FORMS 431 LAKENDALE AVE, KALAMAZOO, MI 49001-2646 LAKESIDE LITTER RECEPTACLE WITH SIDE OPENING POWDER COATED- STEEL BLUE COLOR ON RECYCLE CONTAINER. PLACE RECYCLE LOGO AND WORDS "RECYCLED ONLY". TOP OF RECYCLED CONTAINER TO BE WHITE.
 - 21 THICKENED EDGE WALK- RE: E/SA3.0
 - 22 NEW WOOD FENCE & GATE- TO MATCH EXISTING- RE: I/SA7.1
 - 23 FISH CHUTE- RE: CW2.1
 - 24 WATER LEVEL SENSOR- RE: K/SA3.3 & L.S.S.
 - 25 36" CONCRETE TURNDOWN AT GATE RE: SIM E/SA3.0
 - 26 CMU WALL EXTENSION AT EXISTING WALL/ TUNNEL- SEE M/SA3.0
 - 27 HANDRAIL TYPE 2- SEE B&F/SA3.1
 - 28 12" DEEP PLAYGROUND MULCH- SEE N/SA3.0 AND SPECIFICATIONS

PAVEMENT NOTES

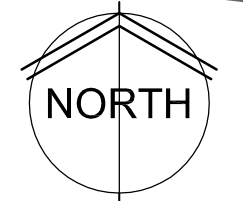
- (A) NOT USED
- (B) ASPHALT PAVEMENT- VEHICULAR- SEE C/SA3.0
- (C) CONCRETE PAVEMENT- 4" THICK- SEE A&D/SA3.0
- (D) CONCRETE PAVEMENT- TYPE 2 VEHICULAR- SEE B&D/SA3.0

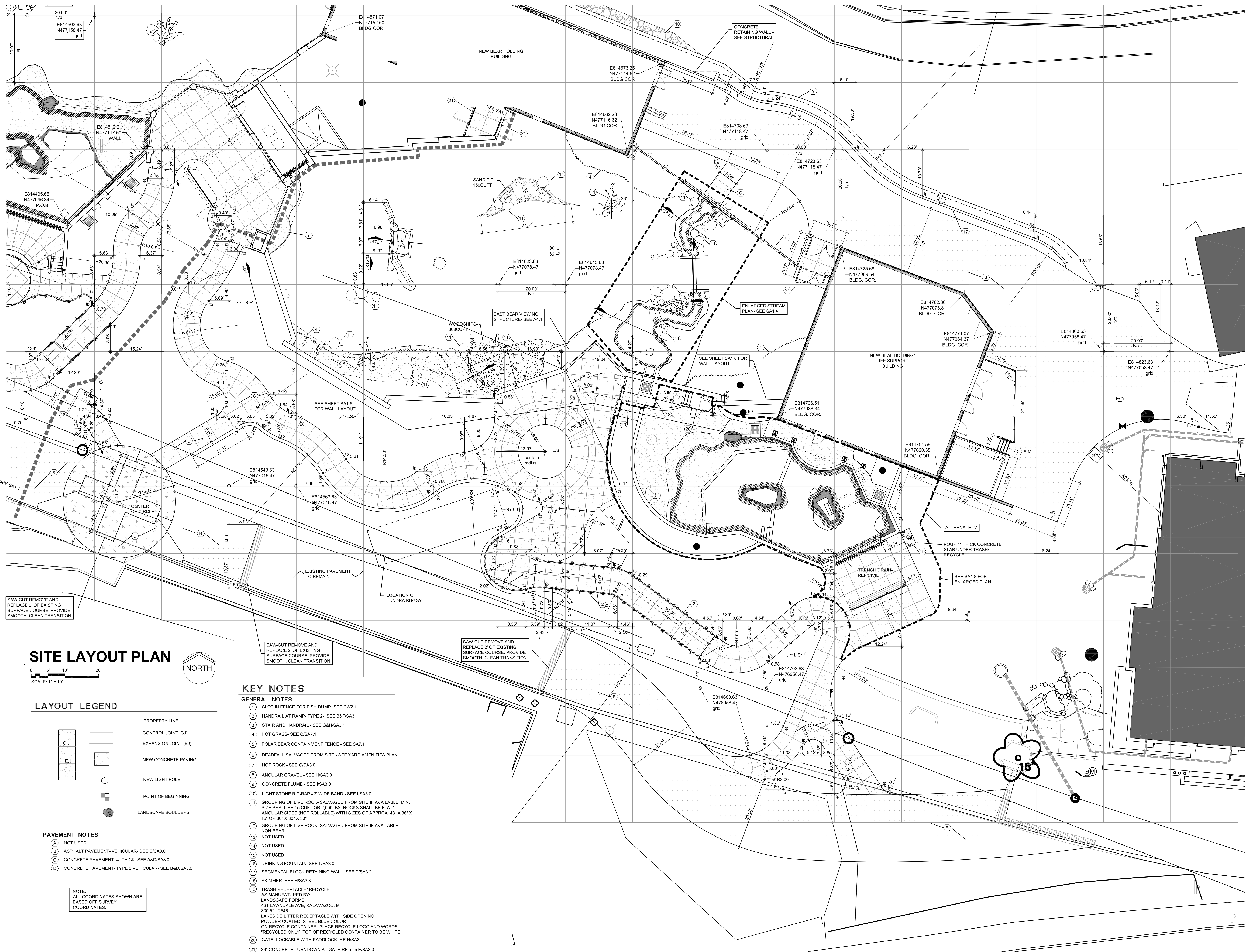
NOTE: ALL COORDINATES SHOWN ARE BASED OFF SURVEY COORDINATES.

LAYOUT LEGEND

- PROPERTY LINE
- CONTROL JOINT (C.J.)
- EXPANSION JOINT (E.J.)
- NEW CONCRETE PAVING
- POINT OF BEGINNING
- TP TANGENT POINT
- LANDSCAPE BOULDERS

SITE LAYOUT PLAN
 SCALE: 1" = 10'





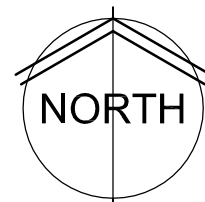
SAW-CUT REMOVE AND REPLACE 2" OF EXISTING SURFACE COURSE. PROVIDE SMOOTH, CLEAN TRANSITION

SAW-CUT REMOVE AND REPLACE 2" OF EXISTING SURFACE COURSE. PROVIDE SMOOTH, CLEAN TRANSITION

SAW-CUT REMOVE AND REPLACE 2" OF EXISTING SURFACE COURSE. PROVIDE SMOOTH, CLEAN TRANSITION

SITE LAYOUT PLAN

SCALE: 1" = 10'



LAYOUT LEGEND

	PROPERTY LINE
	CONTROL JOINT (CJ)
	EXPANSION JOINT (EJ)
	NEW CONCRETE PAVING
	NEW LIGHT POLE
	POINT OF BEGINNING
	LANDSCAPE BOULDERS

PAVEMENT NOTES

- (A) NOT USED
- (B) ASPHALT PAVEMENT-VEHICULAR-SEE C/SA3.0
- (C) CONCRETE PAVEMENT-4" THICK-SEE A&D/SA3.0
- (D) CONCRETE PAVEMENT-TYPE 2 VEHICULAR-SEE B&D/SA3.0

NOTE:
ALL COORDINATES SHOWN ARE BASED ON SURVEY COORDINATES.

KEY NOTES

GENERAL NOTES

- (1) SLOT IN FENCE FOR FISH DUMP- SEE CW2.1
- (2) HANDRAIL AT RAMP-TYPE 2- SEE B&F/SA3.1
- (3) STAIR AND HANDRAIL - SEE G&H/SA3.1
- (4) HOT GRASS- SEE C/SA7.1
- (5) POLAR BEAR CONTAINMENT FENCE - SEE SA7.1
- (6) DEADFALL SALVAGED FROM SITE - SEE YARD AMENITIES PLAN
- (7) HOT ROCK - SEE G/SA3.0
- (8) ANGULAR GRAVEL - SEE H/SA3.0
- (9) CONCRETE FLUME - SEE I/SA3.0
- (10) LIGHT STONE RIP-RAP - 3' WIDE BAND - SEE I/SA3.0
- (11) GROUPING OF LIVE ROCK- SALVAGED FROM SITE IF AVAILABLE. MIN. SIZE SHALL BE 15 CUFT OR 2,000LBS. ROCKS SHALL BE FLAT/ ANGULAR SIDES (NOT ROLLABLE) WITH SIZES OF APPROX. 48" X 36" X 15" OR 30" X 30" X 30".
- (12) GROUPING OF LIVE ROCK- SALVAGED FROM SITE IF AVAILABLE. NON-BEAR.
- (13) NOT USED
- (14) NOT USED
- (15) NOT USED
- (16) DRINKING FOUNTAIN. SEE I/SA3.0
- (17) SEGMENTAL BLOCK RETAINING WALL - SEE C/SA3.2
- (18) SKIMMER- SEE H/SA3.3
- (19) TRASH RECEPTACLE/ RECYCLE- AS MANUFACTURED BY: LANDSCAPE FORMS 431 LAWDALE AVE. KALAMAZOO, MI 800.521.2546 LAKESIDE LITTER RECEPTACLE WITH SIDE OPENING POWDER COATED- STEEL BLUE COLOR ON RECYCLE CONTAINER- PLACE RECYCLE LOGO AND WORDS "RECYCLED ONLY" TOP OF RECYCLED CONTAINER TO BE WHITE.
- (20) GATE- LOCKABLE WITH PADDLOCK-RE H/SA3.1
- (21) 36" CONCRETE TURNDOWN AT GATE RE: SIM E/SA3.0

wdm
ARCHITECTS
WDM Architects P.A.
105 North Washington
Wichita, KS 67202-2815
T 316.262.4700
F 316.262.0002
wdmarchitects.com

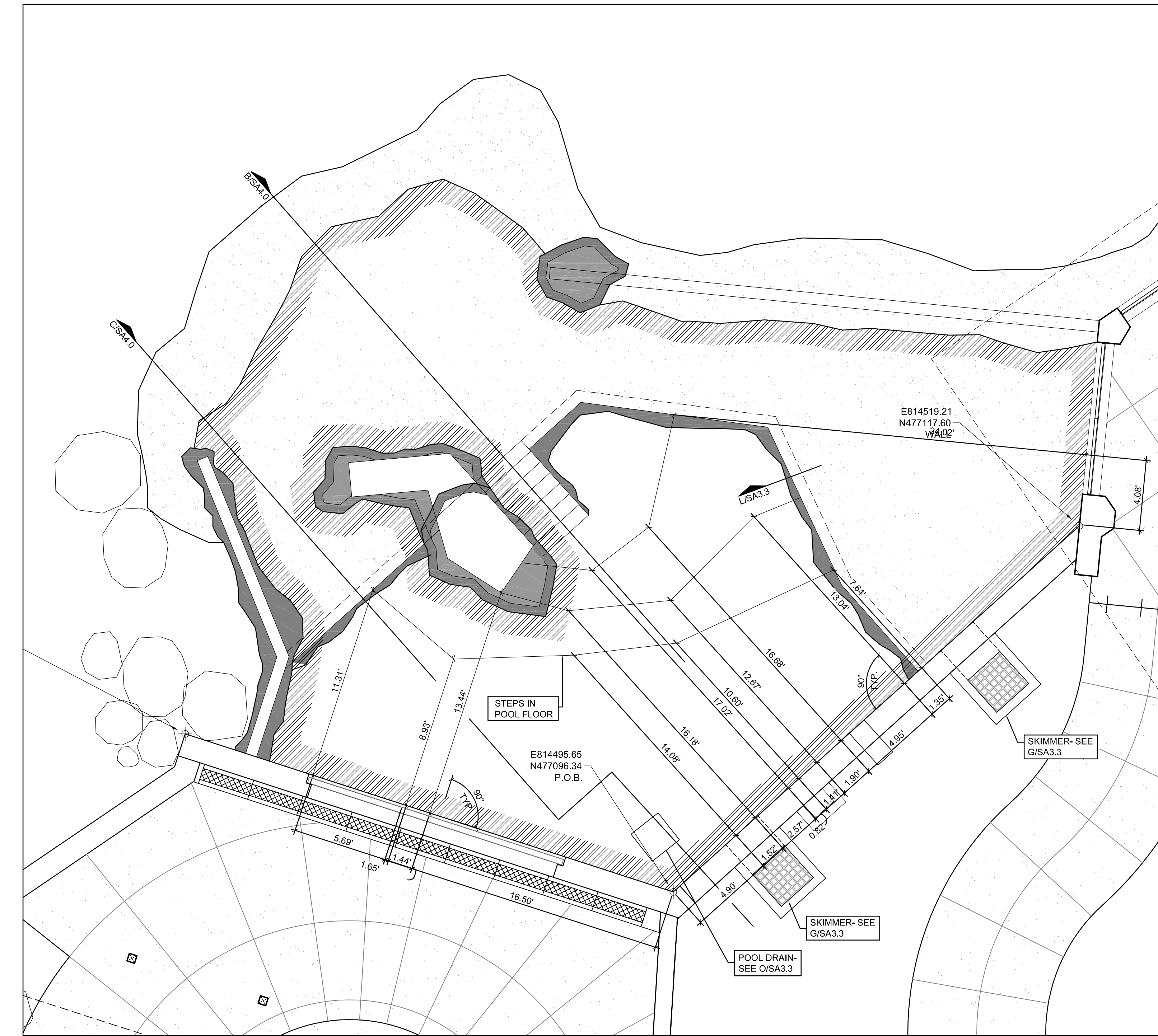
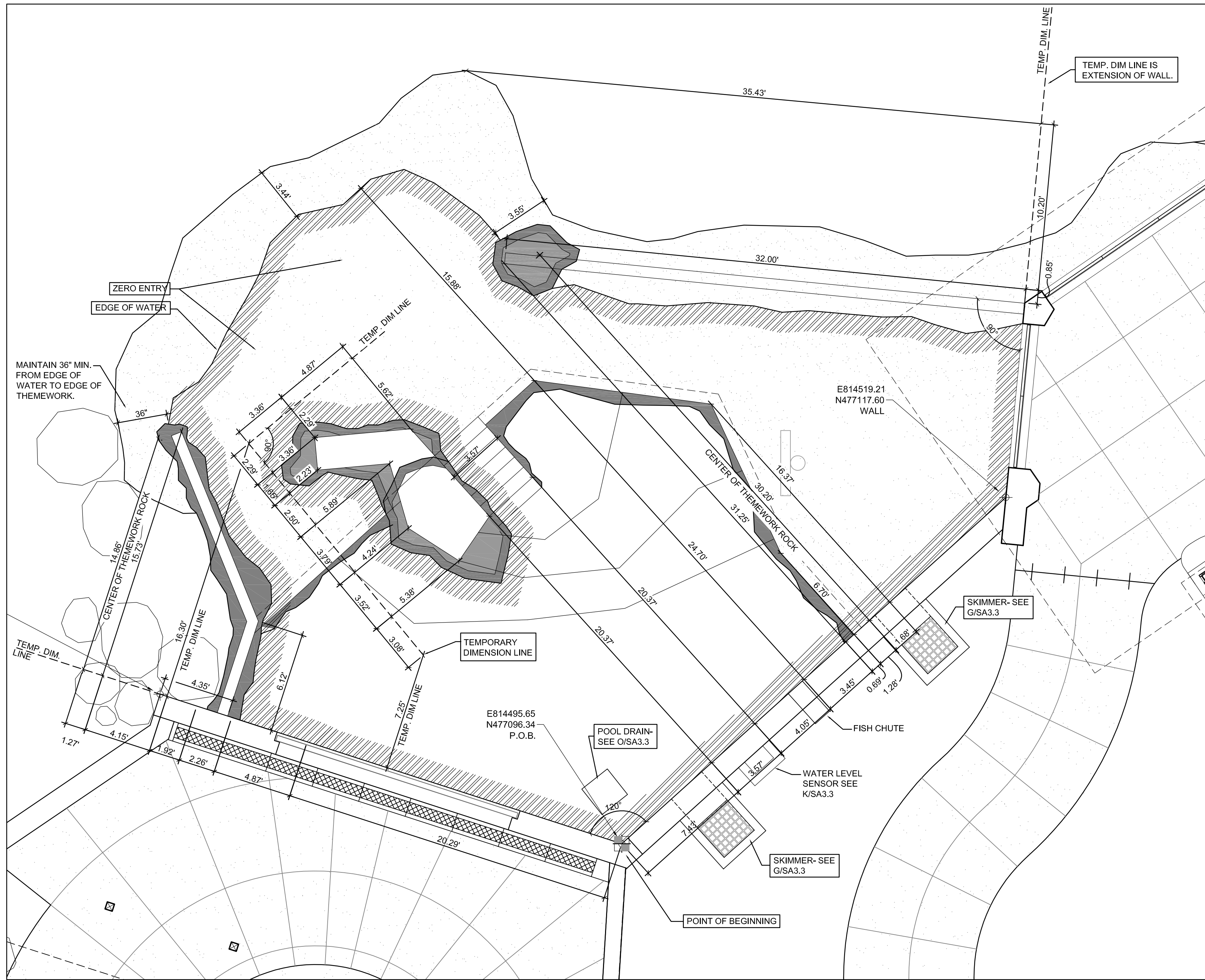
we do more
henry vilas
ZOO

ARCTIC ANIMAL EXHIBIT AND CONCESSIONS
RFB No. 313086
Henry Vilas Zoo - County of Dane
Department of Public Works
1919 Alliant Energy Center Way
Madison, Wisconsin

PRINTS ISSUED
07.26.2013 - Schematic Design
08.23.2013 - Design Development
09.23.2013 - 65% CD's
10.07.2013 - Pricing Set
10.21.2013 - 95% CD's
11.13.2013 - Bid Documents

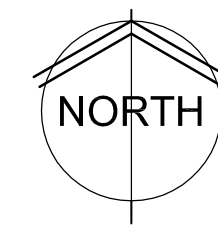
WDM No. 13046 drawn: NS
checked: SR
SITE LAYOUT PLAN

SA1.2



**POLAR BEAR POOL
ENLARGED LAYOUT PLAN**

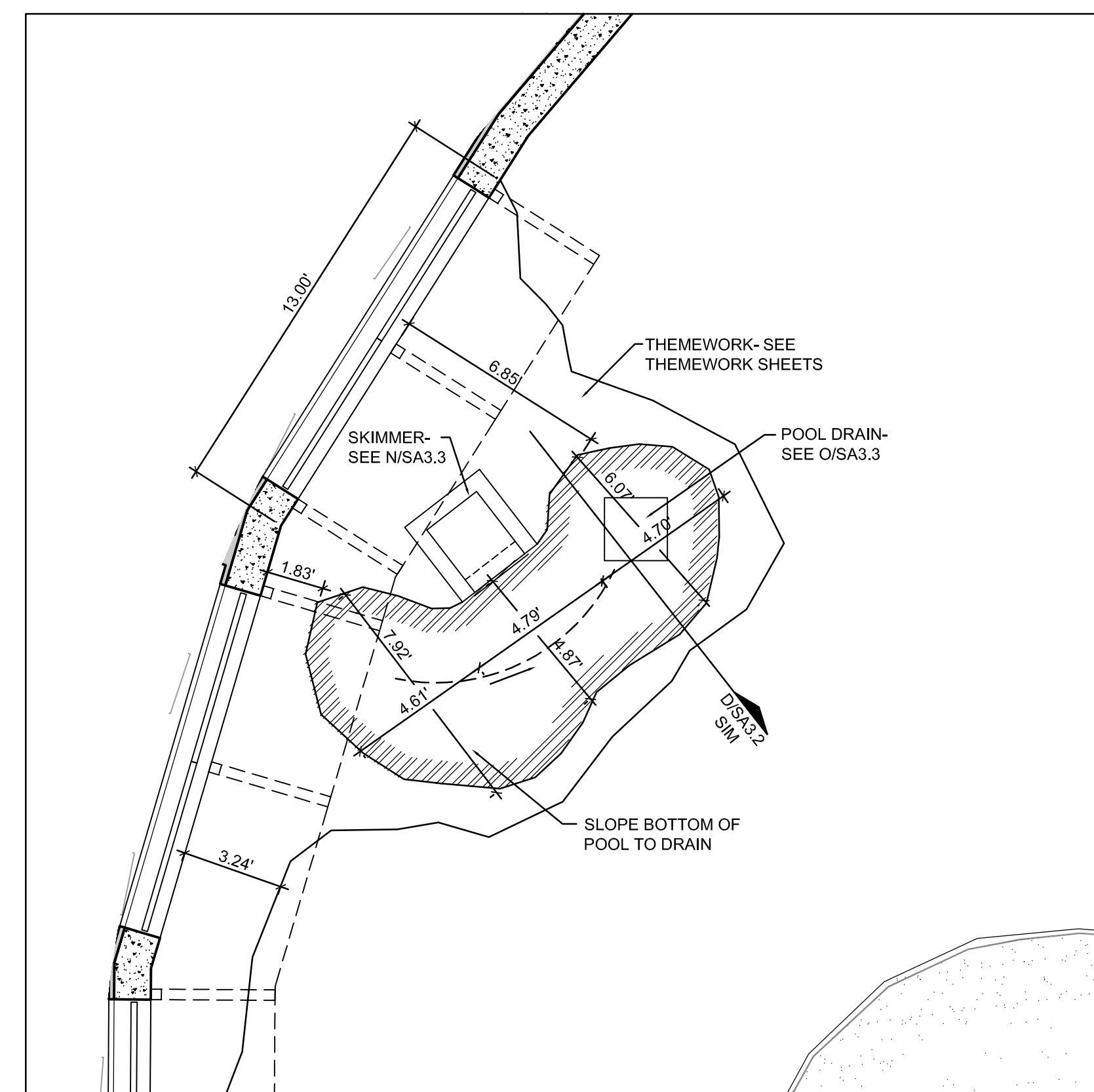
SCALE: 1/4" = 1'-0"



LAYOUT LEGEND

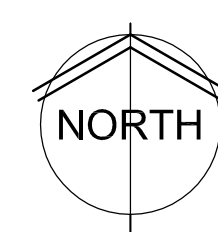
- PROPERTY LINE
- CONTROL JOINT (CJ)
- EXPANSION JOINT (EJ)
- NEW CONCRETE PAVING
- NEW LIGHT POLE
- ⊕ POINT OF BEGINNING
- LANDSCAPE BOULDERS

NOTE:
ALL COORDINATES SHOWN ARE
BASED OFF SURVEY
COORDINATES.



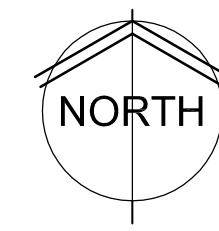
**BEAR POOL @ GRILL
ENLARGED LAYOUT PLAN**

SCALE: 1/4" = 1'-0"



**POLAR BEAR POOL
ENLARGED LAYOUT PLAN**

SCALE: 1/4" = 1'-0"



WDM Architects P.A.
105 North Washington
Wichita, KS 67202-2815
T 316.262.4700
F 316.262.0002
wdmarchitects.com



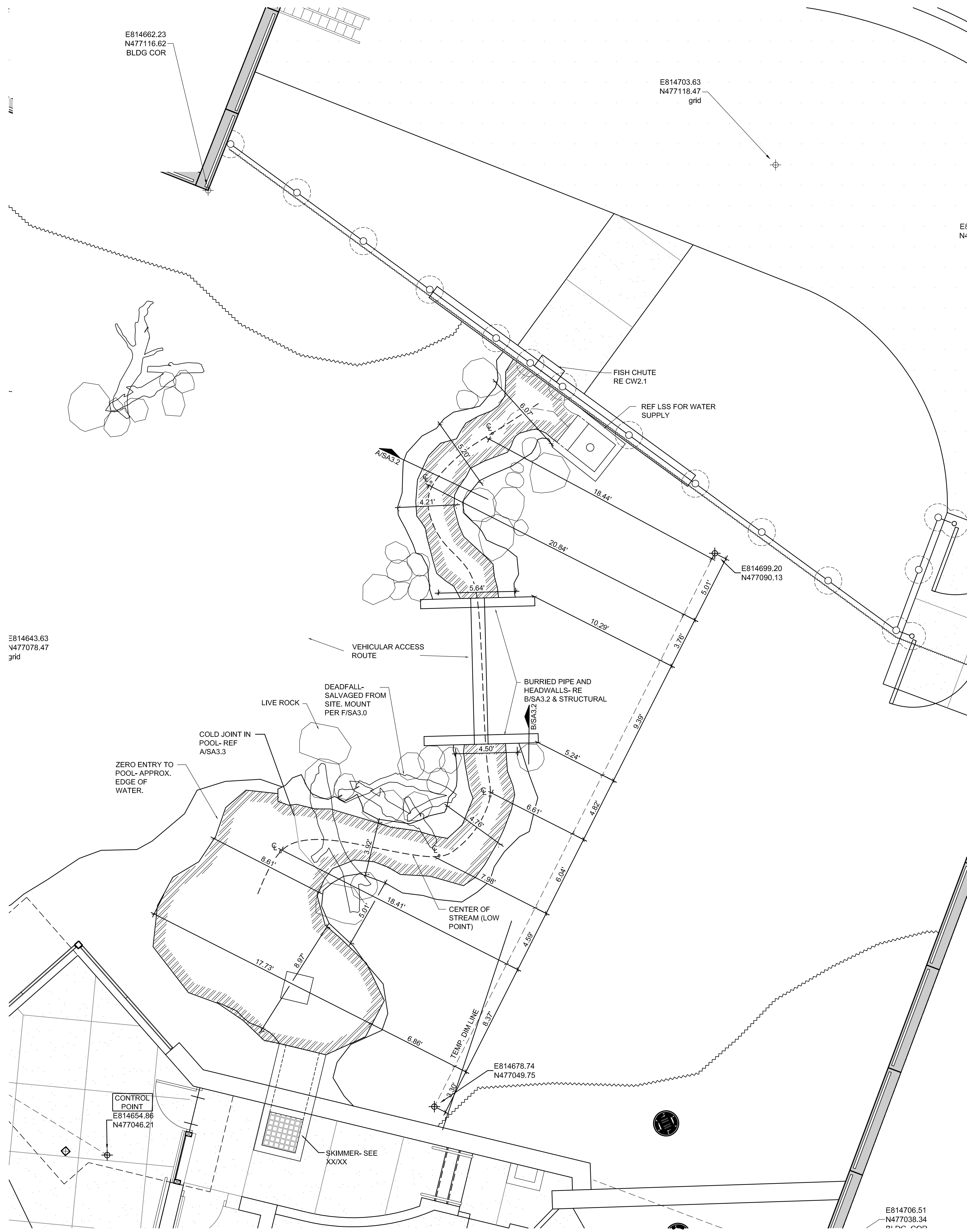
ARCTIC ANIMAL EXHIBIT AND CONCESSIONS
RFB No. 313086
Henry Vilas Zoo - County of Dane
Department of Public Works
Henry Vilas Zoo
702 S Randall Ave
1919 Alliant Energy Center Way
Madison, Wisconsin

PRINTS ISSUED
07.26.2013 - Schematic Design
08.23.2013 - Design Development
09.23.2013 - 65% CD's
10.07.2013 - Pricing Set
10.21.2013 - 95% CD's
11.13.2013 - Bid Documents

WDM No. 13046
drawn: NS
checked: SR

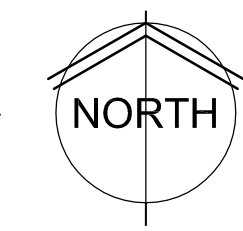
BEAR POOL LAYOUT PLAN

SA1.3

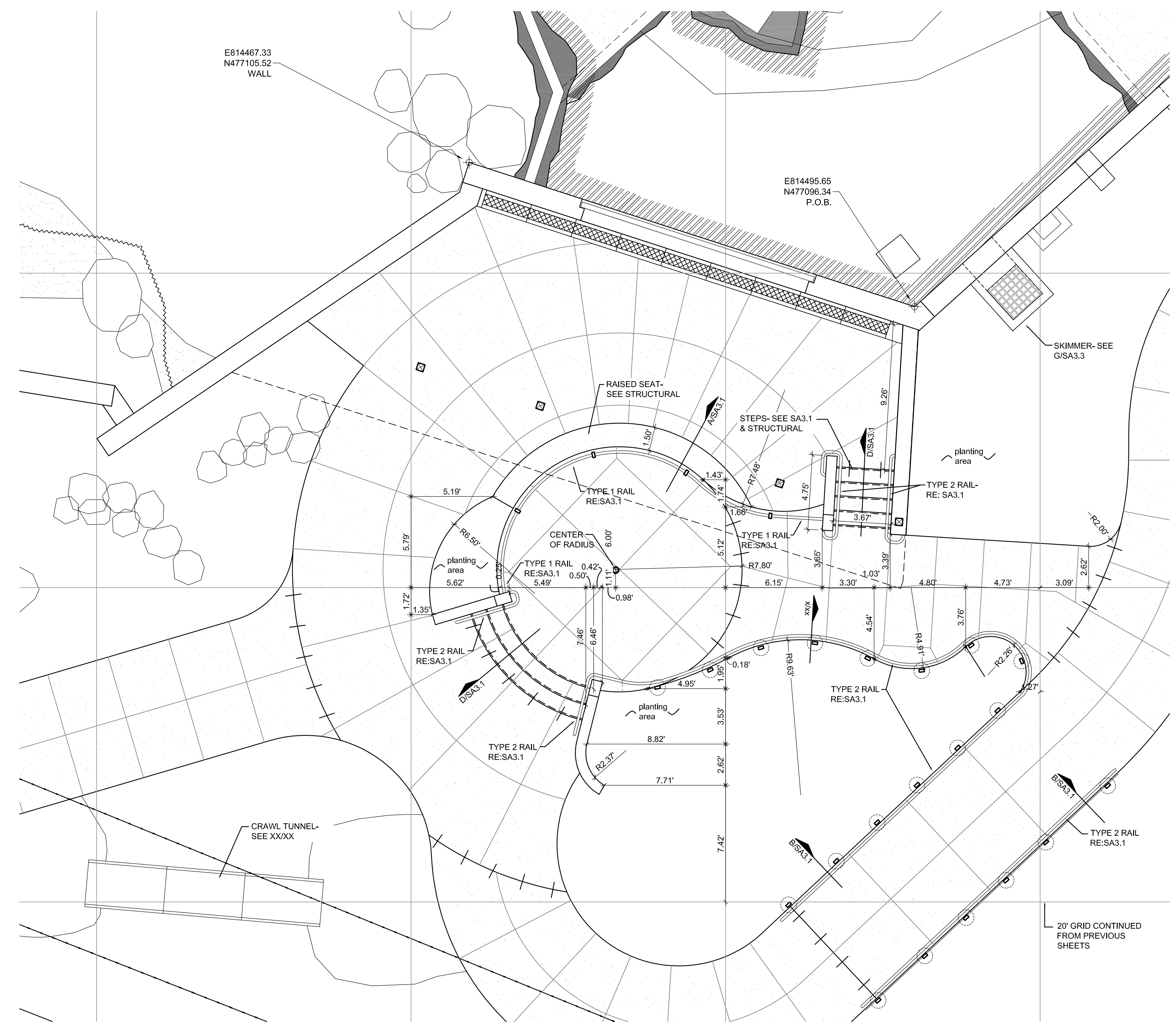


**BEAR STREAM AND POOL
ENLARGED LAYOUT PLAN**

SCALE: 1/4" = 1'-0"

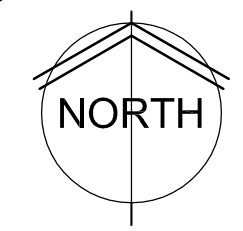


NOTE:
ALL COORDINATES SHOWN ARE
BASED OFF SURVEY
COORDINATES.

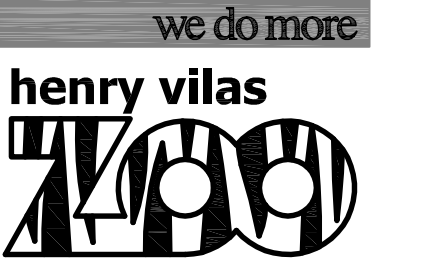


**BEAR UNDERWATER VIEWING
ENLARGED LAYOUT PLAN**

SCALE: 1/4" = 1'-0"



WDM Architects P.A.
105 North Washington
Wichita, KS 67202-2815
T 316.262.4700
F 316.262.0002
wdmarchitects.com

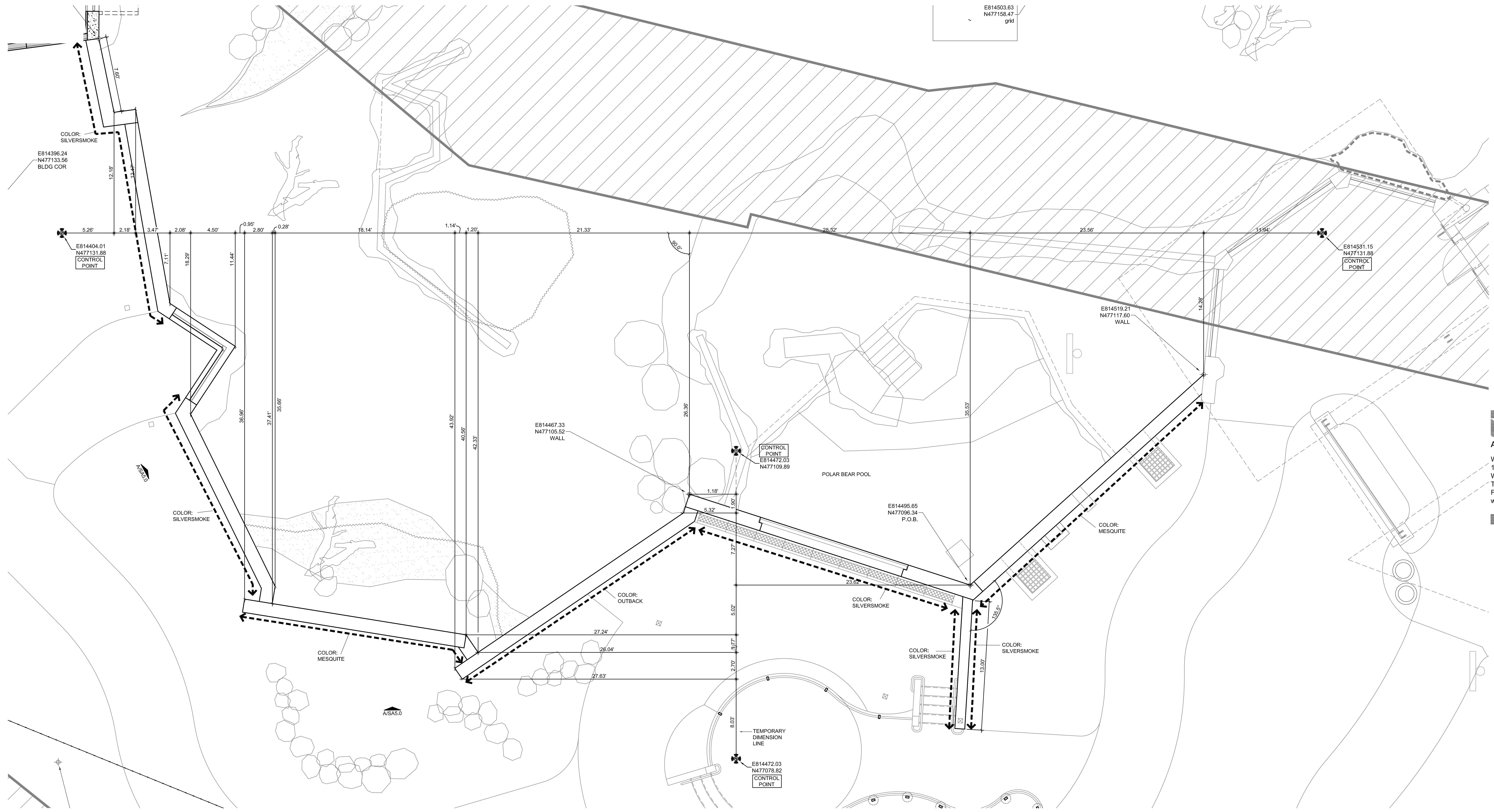


ARCTIC ANIMAL EXHIBIT AND CONCESSIONS
RFB No. 313086
Henry Vilas Zoo - County of Dane
Department of Public Works
1919 Alliant Energy Center Way
Madison, Wisconsin

PRINTS ISSUED
07.26.2013 - Schematic Design
08.23.2013 - Design Development
09.23.2013 - 65% CD's
10.07.2013 - Pricing Set
10.21.2013 - 95% CD's
11.13.2013 - Bid Documents

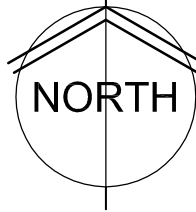
WDM No. 13046
drawn: NS
checked: SR

SA1.4



**BEAR CONTAINMENT WALLS
ENLARGED LAYOUT PLAN**

SCALE: 1/4" = 1'-0"

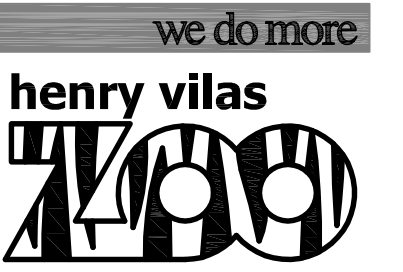


NOTE:
1) CUSTOM REVEALS BOTH SIDES OF WALL
RES:0
2) INTEGRAL COLOR BY DAVIS COLOR
3) SEE SA5.0 AND SG1.1 FOR WALL HEIGHTS

NOTE:
ALL COORDINATES SHOWN ARE
BASED OFF SURVEY
COORDINATES.



WDM Architects P.A.
105 North Washington
Wichita, KS 67202-2815
T 316.262.4700
F 316.262.0002
wdmarchitects.com



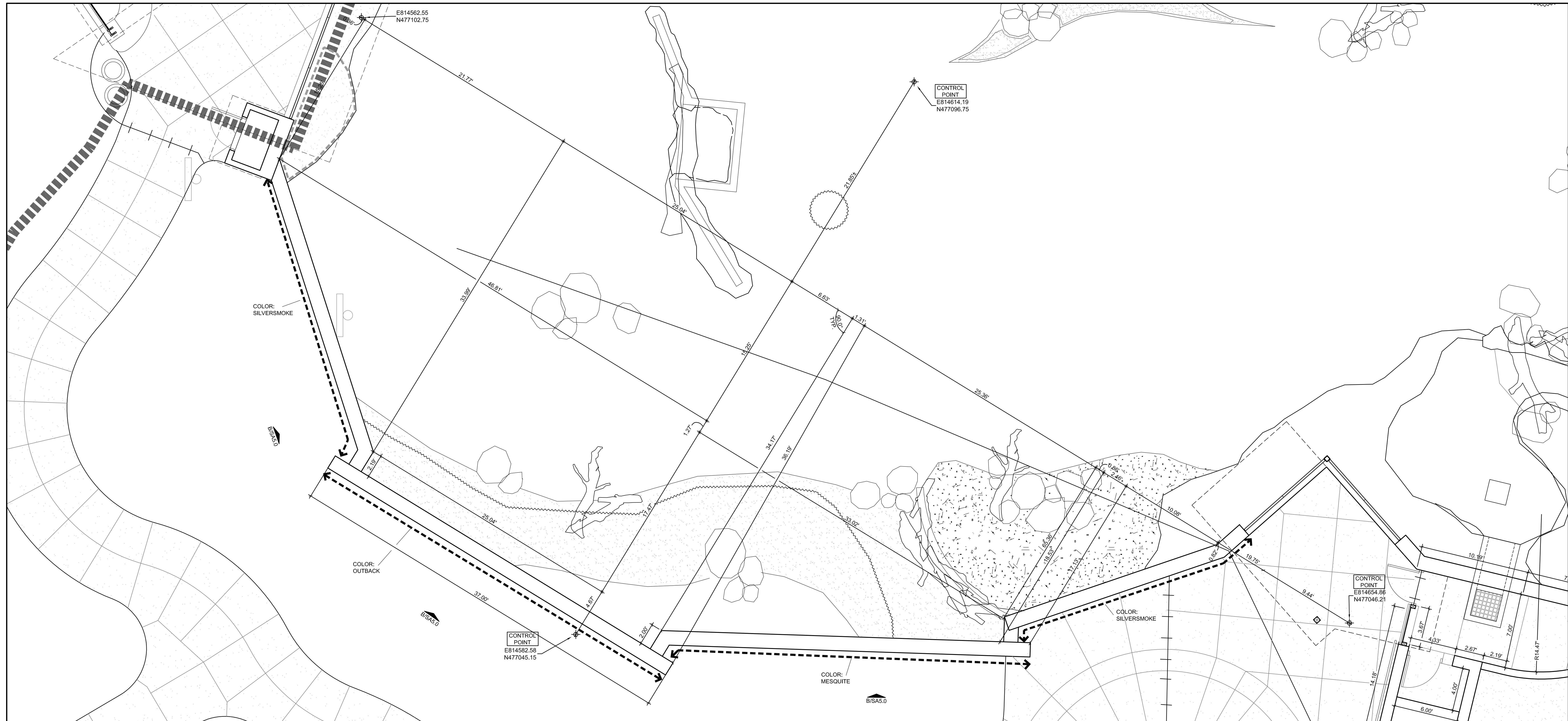
ARCTIC ANIMAL EXHIBIT AND CONCESSIONS
RFB No. 313086
Henry Vilas Zoo - County of Dane
Department of Public Works
1919 Alliant Energy Center Way
Madison, Wisconsin

PRINTS ISSUED
07.26.2013 - Schematic Design
08.23.2013 - Design Development
09.23.2013 - 65% CD's
10.07.2013 - Pricing Set
10.21.2013 - 95% CD's
11.13.2013 - Bid Documents

WDM No. 13046 drawn: NS
checked: SR

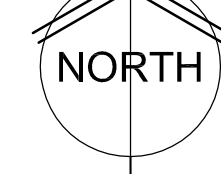
BEAR CONTAINMENT WALLS

SA1.5



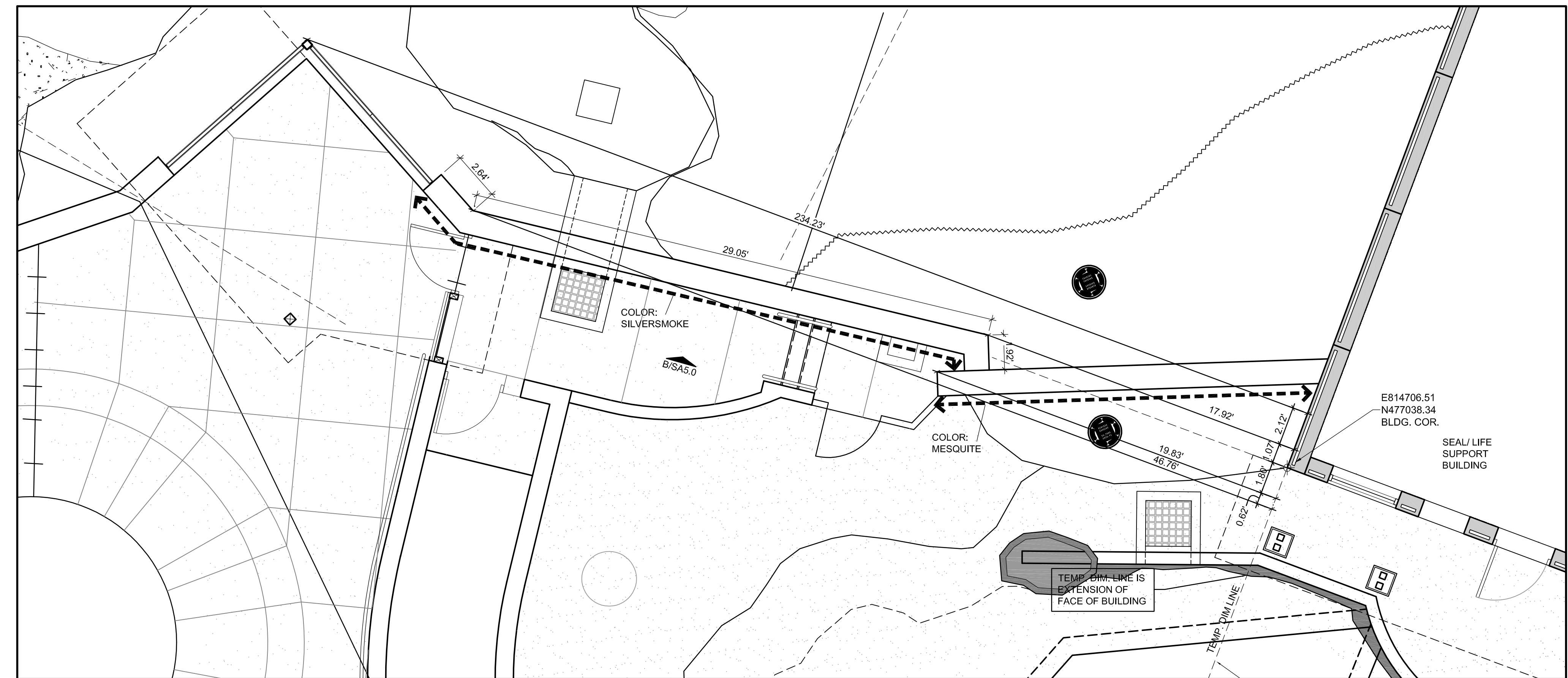
**BEAR CONTAINMENT WALLS
ENLARGED LAYOUT PLAN**

0 2' 4' 8'
SCALE: 1/4" = 1'-0"



NOTE:
ALL COORDINATES SHOWN ARE
BASED OFF SURVEY
COORDINATES.

NOTE:
1) CUSTOM REVEALS BOTH SIDES OF WALL
RE:XXXXX
2) INTEGRAL COLOR BY DAVIS COLOR
3) SEE SA5.1 AND SG1.2 FOR WALL HEIGHTS



**BEAR CONTAINMENT WALLS
ENLARGED LAYOUT PLAN**

0 2' 4' 8'
SCALE: 1/4" = 1'-0"



WDM Architects P.A.
105 North Washington
Wichita, KS 67202-2815
T 316.262.4700
F 316.262.0002
wdmarchitects.com



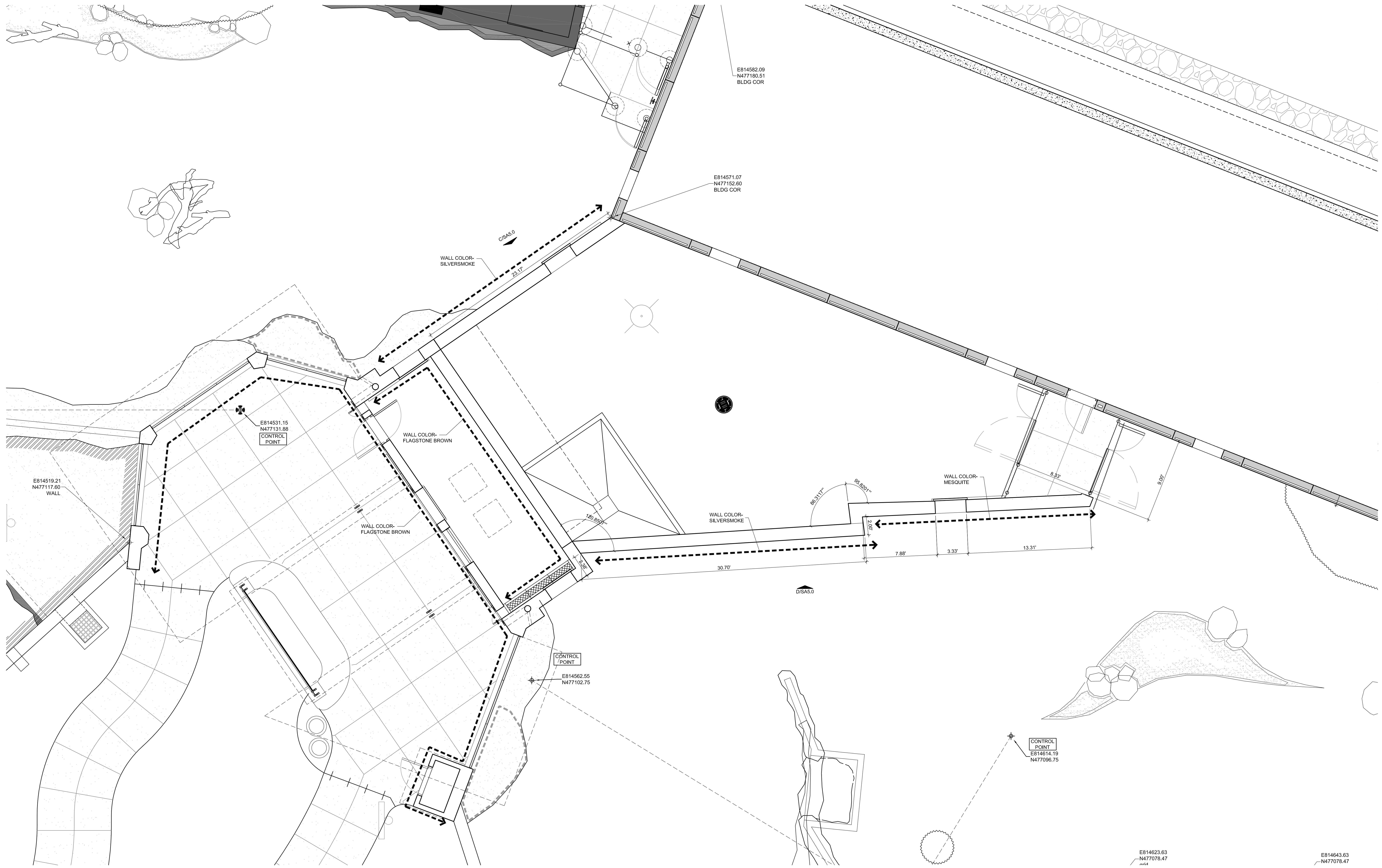
ARCTIC ANIMAL EXHIBIT AND CONCESSIONS
RFB No. 313086
Henry Vilas Zoo - County of Dane
Henry Vilas Zoo - Department of Public Works
702 S Randall Ave
Madison, Wisconsin

PRINTS ISSUED
07.26.2013 - Schematic Design
08.23.2013 - Design Development
09.23.2013 - 65% CD's
10.07.2013 - Pricing Set
10.21.2013 - 95% CD's
11.13.2013 - Bid Documents

WDM No. 13046
drawn: NS
checked: SR

BEAR CONTAINMENT WALLS

SA1.6



**BEAR CONTAINMENT WALLS
ENLARGED LAYOUT PLAN**

SCALE: 1/4" = 1'-0" NORTH



WDM Architects P.A.
105 North Washington
Wichita, KS 67202-2815
T 316.262.4700
F 316.262.0002
wdmarchitects.com

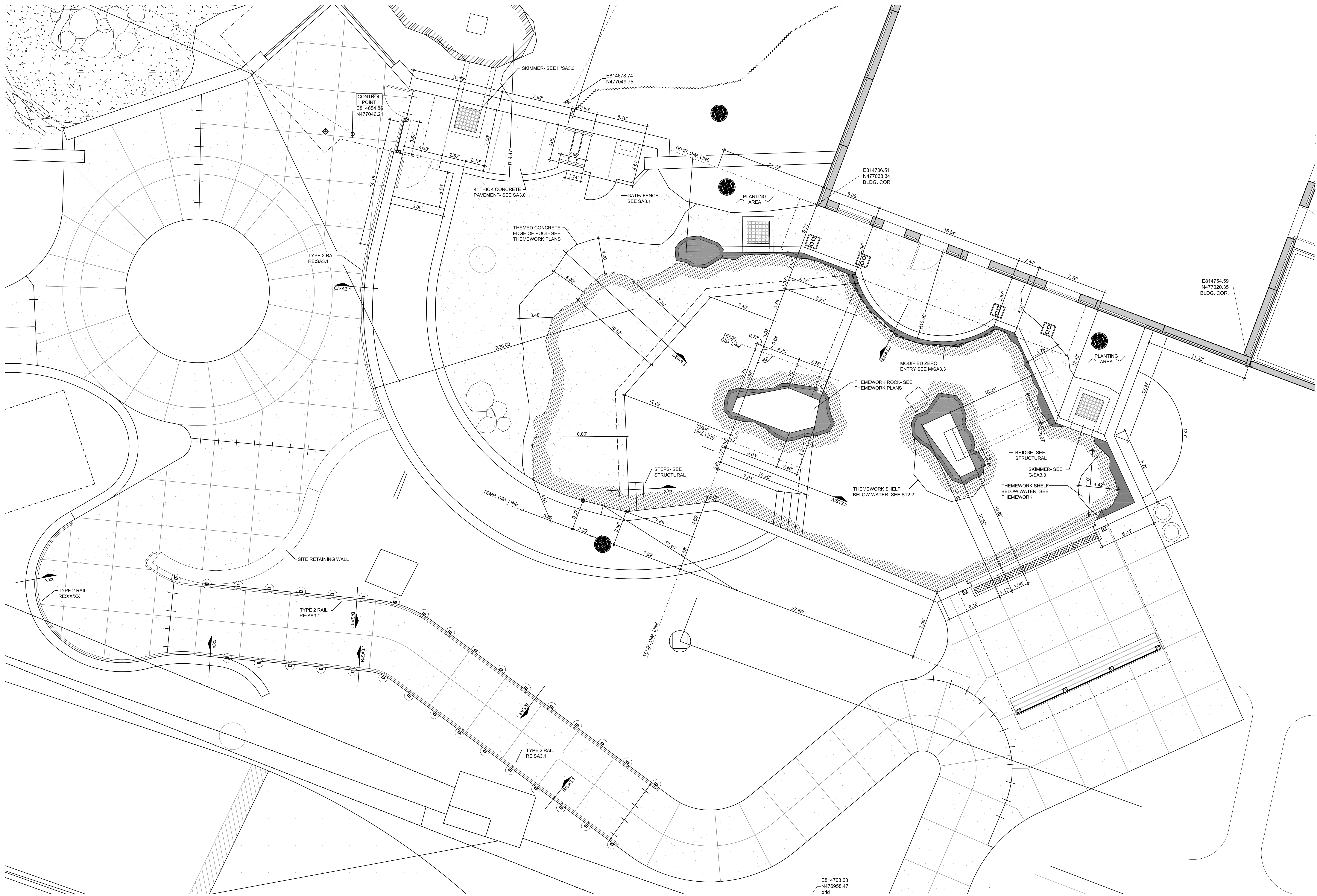


ARCTIC ANIMAL EXHIBIT AND CONCESSIONS
RFB No. 313086
Henry Vilas Zoo - County of Dane
Department of Public Works
1919 Alliant Energy Center Way
Madison, Wisconsin

PRINTS ISSUED
07.26.2013 - Schematic Design
08.23.2013 - Design Development
09.23.2013 - 65% CD's
10.07.2013 - Pricing Set
10.21.2013 - 95% CD's
11.13.2013 - Bid Documents

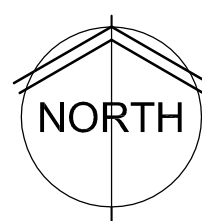
WDM No. 13046 drawn: NS
checked: SR
CONTAINMENT WALL DETAILS

SA1.7



**SEAL PLAN- ALTERNATE #7
ENLARGED LAYOUT PLAN**

0 2 4 8
SCALE: 1/4" = 1'-0"



WDM Architects P.A.
105 North Washington
Wichita, KS 67202-2815
T 316.262.4700
F 316.262.0002
wdmarchitects.com



ARCTIC ANIMAL EXHIBIT AND CONCESSIONS
RFB No. 313086
Henry Vilas Zoo - County of Dane
Henry Vilas Zoo
702 S Randall Ave
Madison, Wisconsin

PRINTS ISSUED
07.26.2013 - Schematic Design
08.23.2013 - Design Development
09.23.2013 - 65% CD's
10.07.2013 - Pricing Set
10.21.2013 - 95% CD's
11.13.2013 - Bid Documents

WDM No. 13046 drawn: NS
checked: SR

ENLARGED SEAL PLAN

SA1.8