



**DANE COUNTY DEPT. OF  
PUBLIC WORKS, HIGHWAY &  
TRANSPORTATION**

1919 Alliant Energy Center Way  
Madison, Wisconsin 53713  
Office: 608/266-4018 ♦ Fax: 608/267-1533  
Public Works Engineering Division  
Public Works Solid Waste Division

# ADDENDUM

JUNE 15, 2018

**ATTENTION ALL REQUEST FOR BID (RFB) HOLDERS**

**RFB NO. 317039 - ADDENDUM NO. 1**

**FACILITY CARD ACCESS SYSTEM**

---

**BIDS DUE:** TUESDAY, JULY 10, 2018, 2:00 PM. DUE DATE AND  
TIME ARE NOT CHANGED BY THIS ADDENDUM.

---

This Addendum is issued to modify, explain or clarify the original Request for Bid (RFB) and is hereby made a part of the RFB. Please attach this Addendum to the RFB.

**PLEASE MAKE THE FOLLOWING CHANGES:**

**1. General Info:**

This Addendum modifies some door controls, provides additional emergency egress information for the AHJ & adds outlets & data ports at two locations (unrelated to the card access system).

Since 13 of the 27 drawings in set have (minor) changes, for simplicity, we are reissuing the entire drawing set as a whole. The Drawings that change are listed below.

**2. Drawings 001, 002, 003, 004, 005**

Delete current Drawings 001, 002, 003, 004, 005; replace with new Drawings 001, 002, 003, 004a, 004b, issued with this Addendum.

**3. Drawings 005a, 005b, 006**

Add new Drawings 005a, 005b, 006 issued with this Addendum.

**4. Drawings 100, 200, 200a, S01, Owner Annex**

Delete current Drawings 100, 200, 200a, S01, Owner Annex; replace with new Drawings 100, 200, 200a, S01, Owner Work, issued with this Addendum.

If any additional information about this Addendum is needed, please call Scott Carlson at 608/266-4179, carlson.scott@countyofdane.com.

Sincerely,

*Scott Carlson*

Project Manager

Enclosures:

CBRE | ESI Drawing Set

(Only Drawings 001, 002, 003, 004a, 004b, 005a, 005b, 006, 100, 200, 200a, S01, & Owner Work are changed)

H:\Shared\ENGINEERING DIVISION\Scott Carlson\317039 - FORC Card Access System\03 - Addendum\Addendum 1.docx

**Facility:**

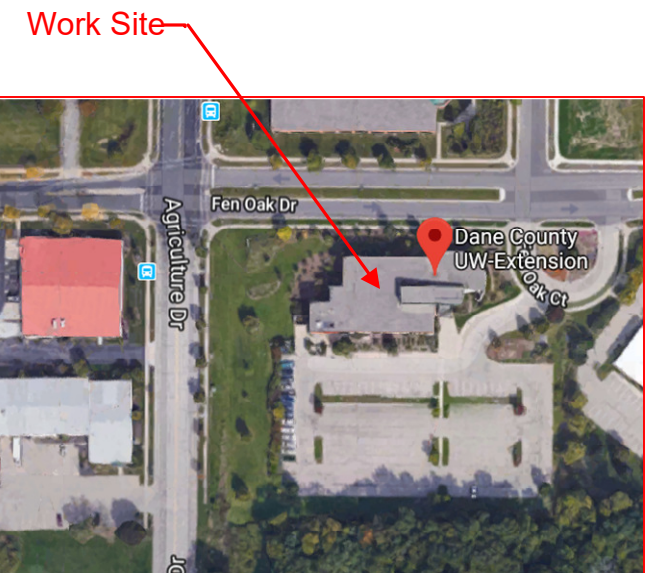
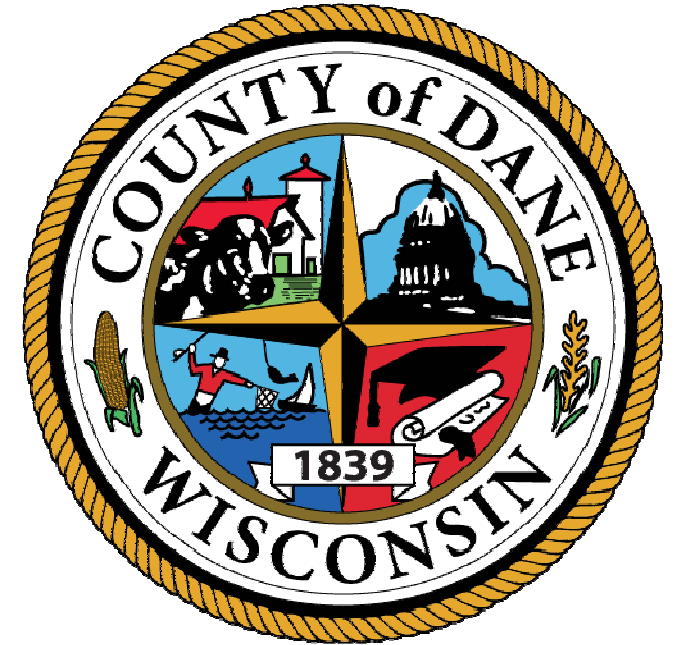
Dane County  
Lyman F. Anderson Agriculture &  
Conservation Center

**Project:**

Facility Card Access System  
Dane County Public Works  
Project No.: 317039

**Location:**

5201 Fen Oak Drive  
Madison, WI 53713



**CBRE|ESI Contact Information:**

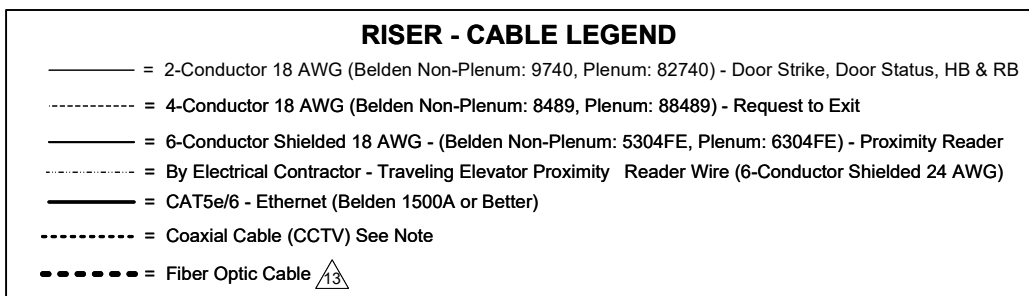
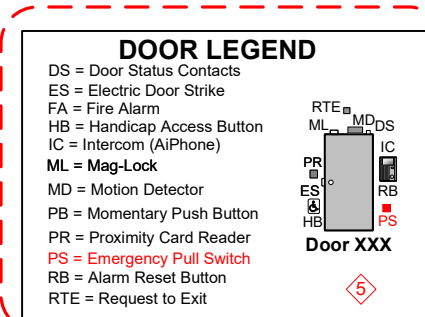
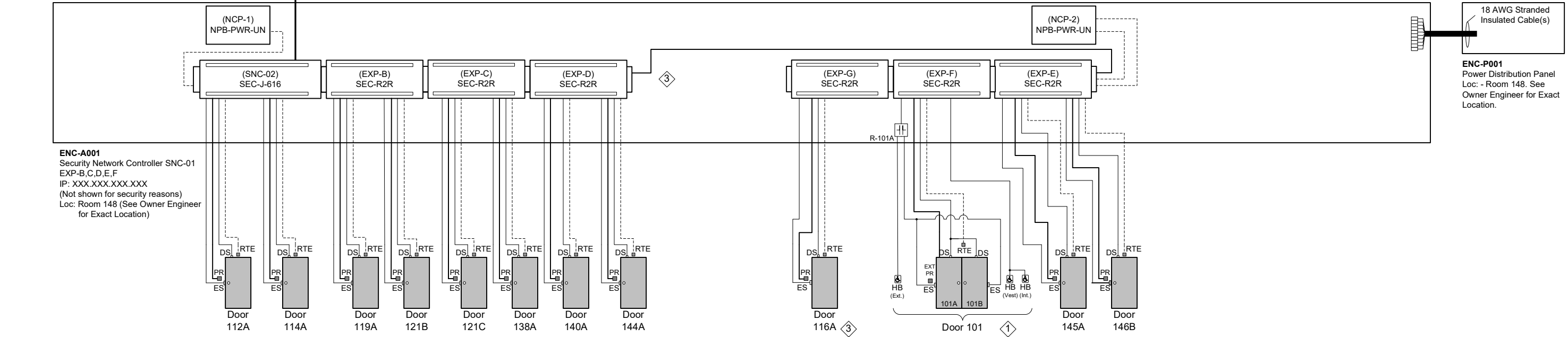
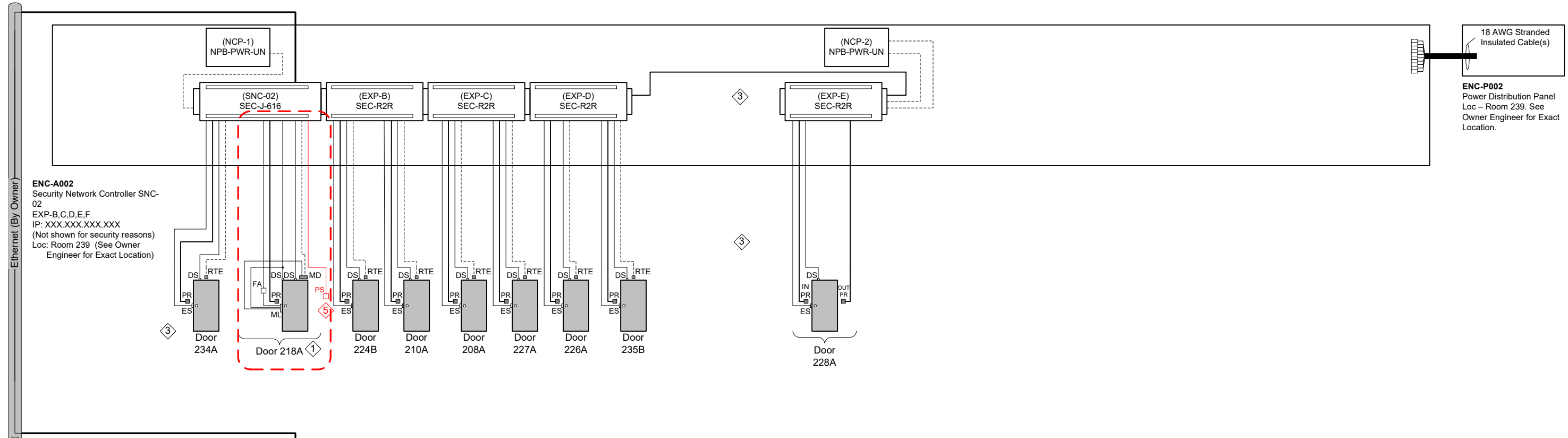
Brett Shinkle – Project Manager  
1-800-522-0372  
www.thinkESI.com

Operations Support Center  
1-877-264-0657  
support@thinkESI.com



Drawing Creation	Date: 03/13/2018
Latest Revision	Date: 06/15/2018





**CBRE|ESI**  
www.thinkESI.com  
1-800-522-0372  
Copyright 2003-2018 ESI. All rights reserved. Do not copy or duplicate without written permission.




**ADDENDUM NO. 1**  
Modified A Door Acc Equip Loc, Rel to Bid  
Engr Comments, Release for Electrical Bid

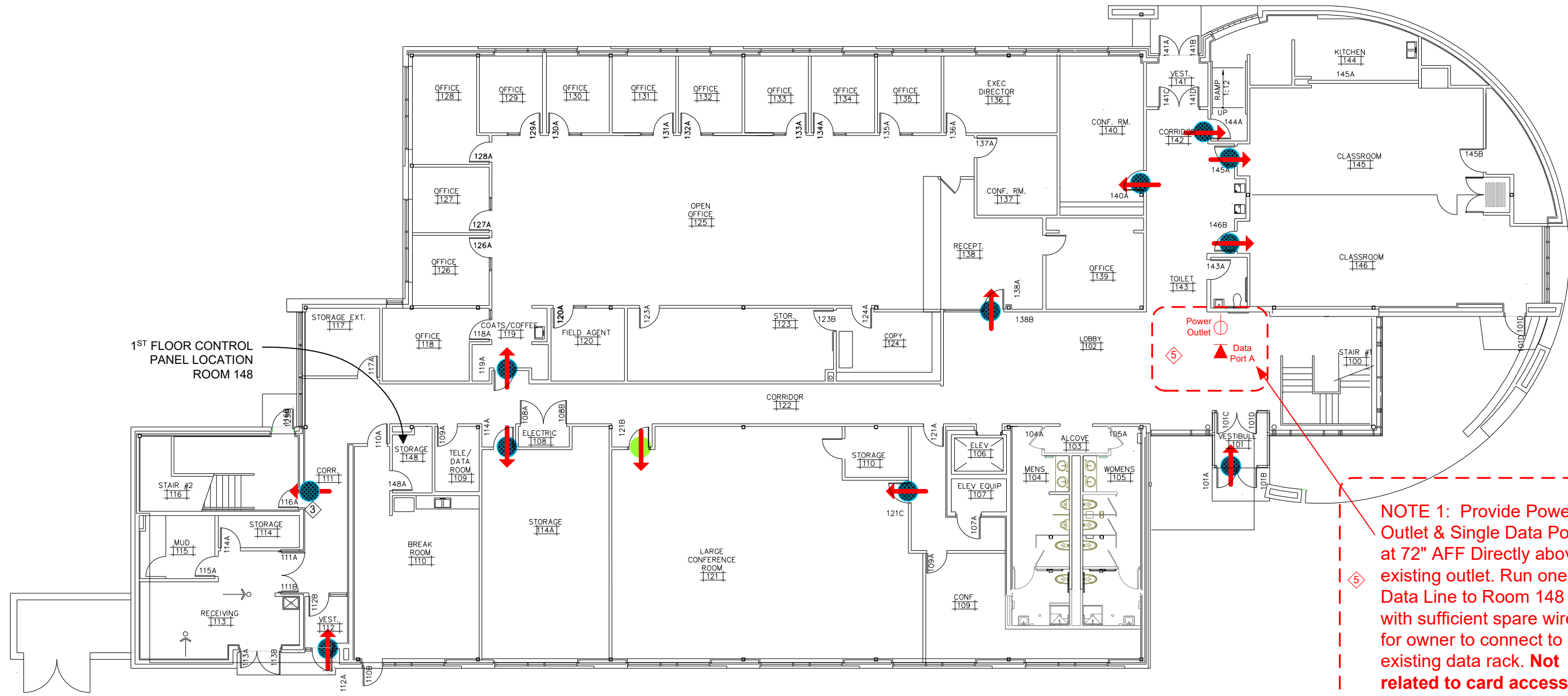
REV.	DESCRIPTION	DATE	BY
5		06/14/18	SEF
3		05/02/18	SEF
1		03/30/18	SEF

**Access Control - Riser Diagram**  
DRAWN BY: Steve Ferns  
SCALE: NTS  
DATE: 03/13/2018  
APPROVED BY: Brett Shinkle

**TITLE:** Dane County - Lyman F. Anderson A & C Center - Card Access System - DC PN 317039  
**DESCRIPTION:** Access Control - Riser Diagram  
**JOB #:** 22181400010  
**DWG PAGE #:** 003  
**FILENAME:** Dane Co - Fen Oak - 2018\_06\_15 - Access Dwg.vsd



**Key:**

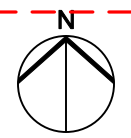
-  Proximity Reader – Base Bid
-  Proximity Card Reader – Alt Bid 1
-  Tail of Arrow is Prox Reader Side



1<sup>ST</sup> FLOOR CONTROL  
PANEL LOCATION  
ROOM 148

**NOTE 1:** Provide Power Outlet & Single Data Port at 72" AFF Directly above existing outlet. Run one (1) Data Line to Room 148 with sufficient spare wire for owner to connect to existing data rack. **Not related to card access system work.**

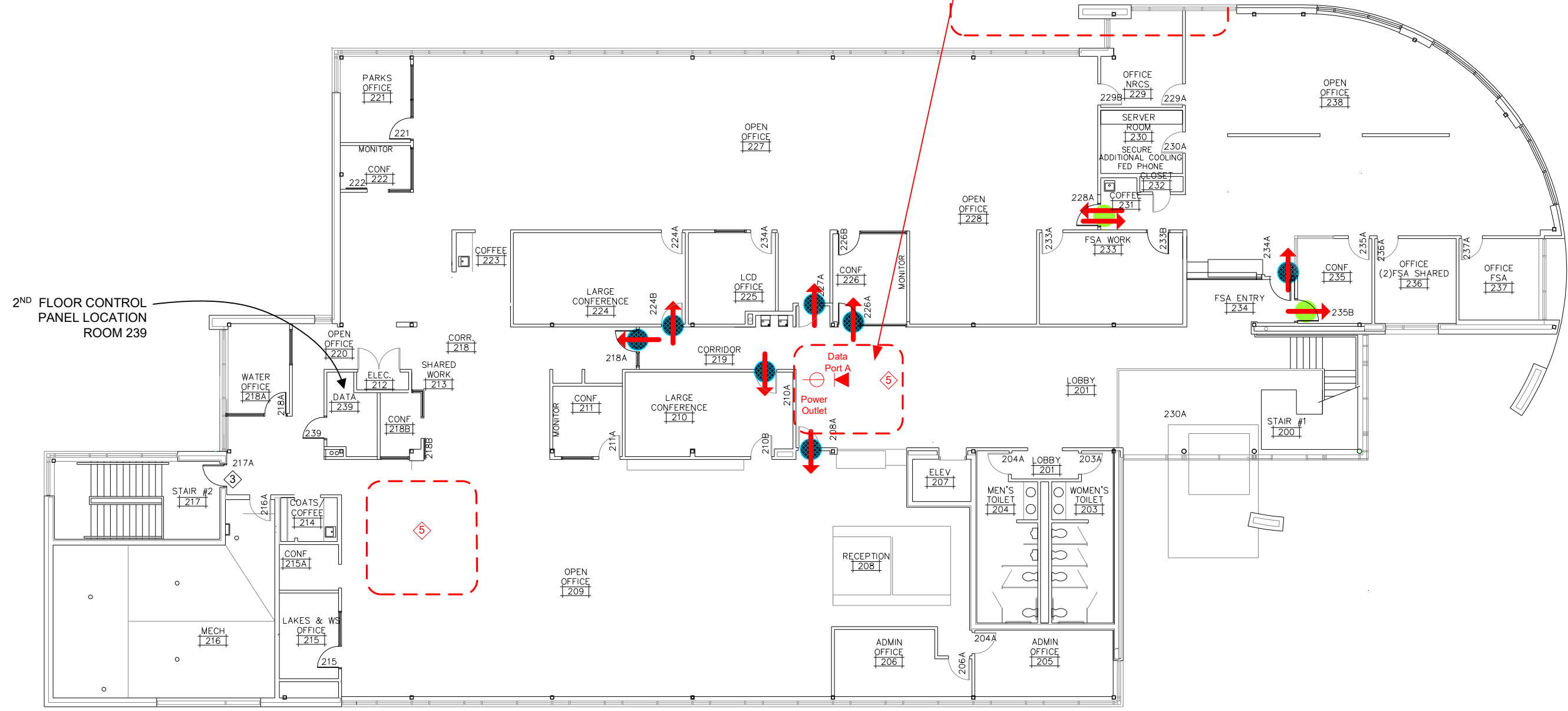
FIRST FLOOR    
 LYMAN F. ANDERSON CENTER  
 DCPW: 3-16-18  
 SCALE: NONE



TITLE: Dane County - Lyman F. Anderson A & C Center - Card Access System - DC PN 317039	
DESCRIPTION: First Floor Plan & Equipment Locations	
DRAWN BY: Steve Ferns	DATE: 03/20/2018
APPROVED BY: Brett Shinkle	
JOB #: 22181400010	SCALE: NTS
DWG PAGE #: 004a	FILENAME: Dane Co - Fen Oak - 2018_06_15 - Access Dwg.vsd
REV.	DESCRIPTION
5	Addendum No.1
3	Modified A Door Acc Equip Loc. Rel to Bid
1	Engr Comments, Release for Electrical Bid
DATE	BY
06/14/18	SEF
05/02/18	SEF
03/30/18	SEF

**CBRE|ESI**  
 www.thinkESI.com  
 1-800-522-0372  
 Copyright 2003-2018 ESI. All rights reserved. Do not copy or duplicate without written permission.

2<sup>ND</sup> FLOOR CONTROL  
PANEL LOCATION  
ROOM 239

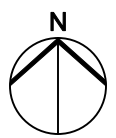


**NOTE 2:** Provide Power Outlet & Single Data Port at 72" AFF Directly above existing outlet. Run one (1) Data Line to Room 239 with sufficient spare wire for owner to connect to existing data rack. **Not related to card access system work.**

**Key:**

- Proximity Reader – Base Bid
- Proximity Card Reader – Alt Bid 1
- ← Tail of Arrow is Prox Reader Side

SECOND FLOOR 1 3  
 LYMAN F. ANDERSON CENTER  
 DCPW: 3-16-18  
 SCALE: NONE

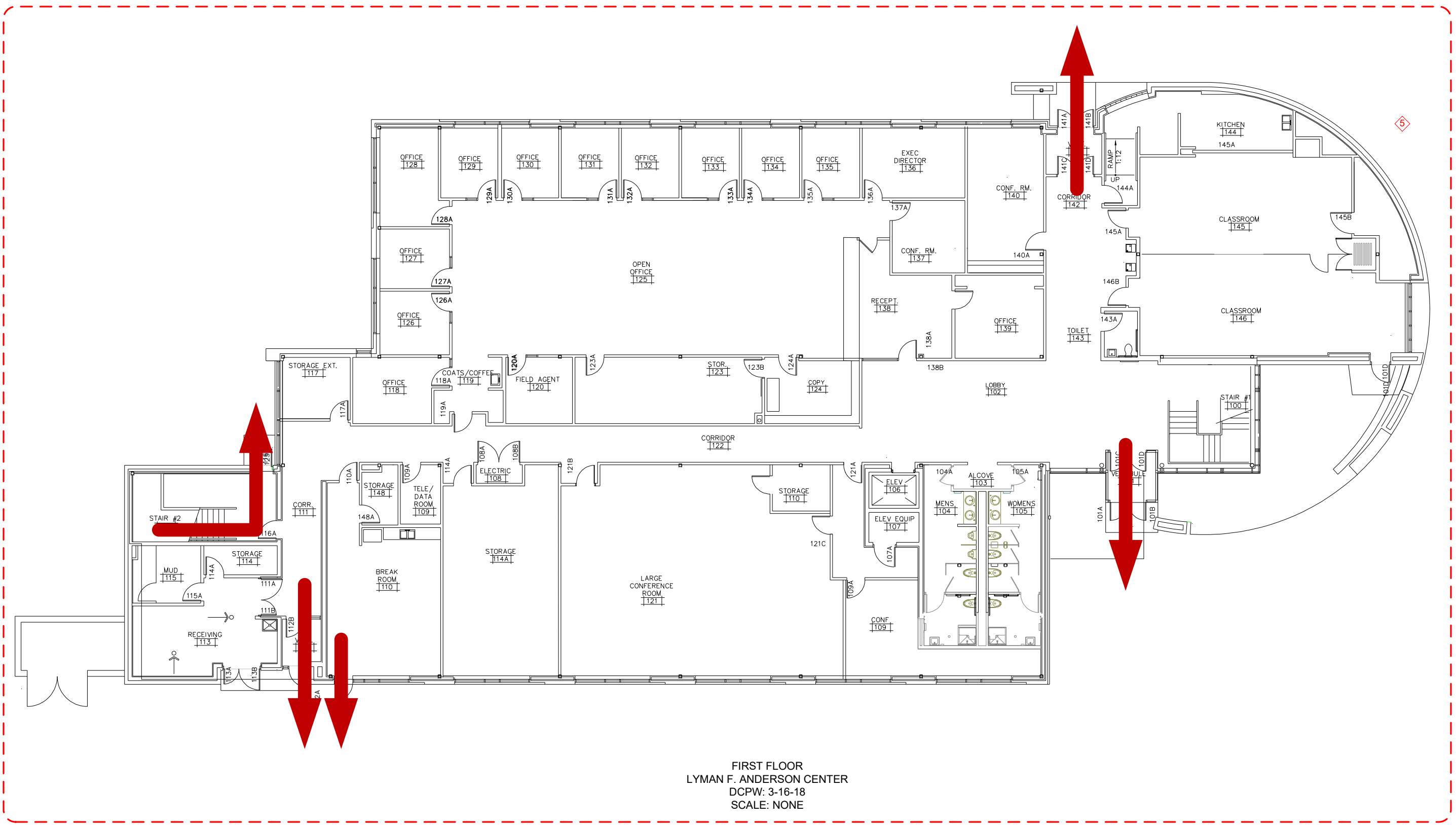


TITLE: Dane County - Lyman F. Anderson A & C Center - Card Access System - DC PN 317039	
DESCRIPTION: Second Floor Plan & Equipment Locations	
JOB #: 22181400010	DATE: 03/20/2018
DRAWN BY: Steve Ferns	APPROVED BY: Brett Shinkle
DWG PAGE #: 004b	FILENAME: Dane Co - Fen Oak - 2018_06_15 - Access Dwg.vsd
SCALE: NTS	NTS

**CBRE|ESI**  
 www.thinkESI.com  
 1-800-522-0372  
 Copyright 2003-2018 ESI. All rights reserved. Do not copy or duplicate without written permission.

REV.	DESCRIPTION	DATE	BY
5	Addendum No. 1	06/14/18	SEF
3	Modified A Door Acc Equip Loc, Rel to Bid	05/02/18	SEF
1	Engr Comments, Release for Electrical Bid	03/30/18	SEF

# FIRST FLOOR ESCAPE ROUTES



FIRST FLOOR  
 LYMAN F. ANDERSON CENTER  
 DCPW: 3-16-18  
 SCALE: NONE

<b>CBRE ESI</b> www.thinkESI.com 1-800-522-0372 <small>Copyright 2003-2018 ESI. All rights reserved. Do not copy or duplicate without written permission.</small>		TITLE: Dane County - Lyman F. Anderson A & C Center - Card Access System - DC PN 317039 DESCRIPTION: First Floor Escape Routes JOB #: 22181400010 DWG PAGE #: 005a	DRAWN BY: Steve Ferns APPROVED BY: Brett Shinkle DATE: 03/20/2018
Addendum No.1 Modified A Door Acc Equip Loc. Rel to Bid Engr Comments, Release for Electrical Bid	06/14/18 05/02/18 03/30/18	SEF SEF SEF	BY
REV.	DESCRIPTION	DATE	BY





**MAGNETIC LOCKED DOOR (Maglock)** 5  
**218A Maglock Door Second Floor**

- One crash bar
- One HID card reader
- One fire alarm release relay
- One request to exit (RTE) sensor
- One access relay
- One pull station
- One local sounder installed in maglock
- One (existing) maglock

**Maglock Door Secured Side**

Person approaching secured side of the door with approved access card credentials

1. Person presents card to card reader
2. Card is validated
3. After access controller validates card, access control panel removes one leg of power (+)
4. As door opens, power is restored to lock
5. Door closes and is locked

**Maglock Door Unsecured Side**

Person approaching unsecured side of the door

1. Person approaches the door
2. RTE sensor detects person and causes the controll access panel to remove one leg of power (+) from the lock, and door is unlocked
3. Door is opened
4. As door opens power is restored to lock
5. Door closes and is locked.

**Maglock Door RTE Failure**

In the event the RTE sensor fails:

1. Emergency door release pull station located next to door is manually activated
2. This removes one leg of power (+) from the lock and the door is unlocked.
3. Emergency door release remains active until pull bar is manually reset
4. After manual reset, power is restored to lock
5. Door closes and is locked

**Maglock Door Fire or Emergency**

In the event the RTE sensor fails:

1. Emergency door release pull station located next to door is manually activated
2. This removes one leg of poer (+\_ from the lock and the door is unlocked
3. Emergency door release remains active until pull station is manually reset
4. After manual reset, ower is restored to lock
5. Door closes and is locked

**Maglock Door Fire Alarm**

When fire alarm is activated:

1. Fire alarm contacts open, remove one leg of poer (+) from the lock, and door is unlocked
2. Only after fire alarm is reset, fire alarm relay closes and restores power to lock
3. Door is closed and is locked

**REGULAR (ELECTRIC/RIM) Strike Door:** 5  
**All doors except 218A & 228A & 101A**

- One HID card reader (RDR)
- One request to exit sensor (RTE)
- One door position switch (DPS)
- One strike (STK)

**Electric Strike Door Secured Side**

Person approaching secured side of door with approved access card credentials:

1. Person presents access card at the reader
2. Card is validated
3. After access controller validates card, The access control panel provides DC power to electric lock causing the lock to release.
4. As person opens door, door position sensor detects passage and relock the door immediately
5. Person is now on unsecured side of the door
6. Door is closed and is locked

**Electric Strike Door Unsecured Side**

Person approaching unsecured side of the door:

1. As person approaches the door, RTE sensor detects movement and shunts door position switch
2. As person grabs door handle, free egress is granted
3. Person exits unsecured side
4. Door closes and is locked

**DUAL-SIDED REGULAR STRIKE DOOR:** 5  
**228A Dual-sided electric Strike Door Second Floor**

- Two HID card readers (RDR)
- One door position switch (DPS)
- One strike (STK)

**Electric Strike Door Secured Side Entry**

Person approaching secured side of door with approved access card credentials:

1. Person presents access card at the reader
2. Card is validated.
3. After access controller validates, card, the access control panel provide DC power to electric lock causing the lock to release
4. As person opens door, door position sensor detects passage and relocks the door immediately
5. Door is closed and is locked

**Electric Strike Door Secured Side Exit**

Person approaching secured side of door with approved access card credentials:

1. Person presents access card at the reader
2. Card is validated.
3. After access controller validates, card, the access control panel provide DC power to electric lock causing the lock to release
4. As person opens door, door position sensor detects passage and relocks the door immediately
5. Door is closed and is locked

**REGULAR STRIKE WITH HANDICAP ACCESS BUTTON (HB):** 5  
**Door 101A Electric Strike with HB, First Floor**

- One HID card reader (RDR)
- One request to exit sensor (RTE)
- One door position switch (DPS)
- One strike (STK)
- Three handicap access buttons (HB)

**Electric Strike Door with HB Entering or Exiting During Occupied Hours**

Person approaches either side of door:

1. Electronic strike follows occupied schedule and remains unlocked during occupied schedule, persons free to enter and exit without card
2. HB pressed door leaf 101A automatically opens for programmed amount of time. Door automatically closes after open time expires.

**Electric Strike Door with HB Entering or Exiting During Occupied Hours**

Person approaching secured side of door with approved access card credentials:

1. Person presents access card at the reader
2. Card is validated
3. After access controller validates card, the access control panel provides DC power to electric lock causing the lock to release.
4. Access control panel also provides DC power to HB relay after card is validated.
5. Once button is compressed, moter engages and opens door automatically
6. As person opens door, door position sensor detects passage and relock the door immediately
7. Person is now on unsecured side of the door
8. Door is closed and is locked

**Electric Strike Door with HB Exiting Unsecured Side**

Person approaching unsecured side of the door:

1. As person approaches the door, RTE sensor detects movement and shunts door position switch
2. As person grabs door handle, free egress is granted
3. Person exits unsecured side
4. Door closes and is locked

**NON-EGRESS DOOR**

**All doors that are not getting modified in the Facility Card Access Project:**

Person approaches either side of door

1. Person grabs the door handle and is granted free egress
2. Person enters door

TITLE:	Dane County - Lyman F. Anderson A & C Center - Card Access System - DC PN 317039		
DESCRIPTION:	Sequences of Operation		
JOB #:	22181400010	DRAWN BY:	Steve Ferns
DATE:	06/14/18	APPROVED BY:	Brett Shinkle
REV.		SCALE:	NTS
		FILENAME:	Dane Co - Fen Oak - 2018_06_15 - Access Dwg.yxd

## Mounting & Connection Details – Door Contacts

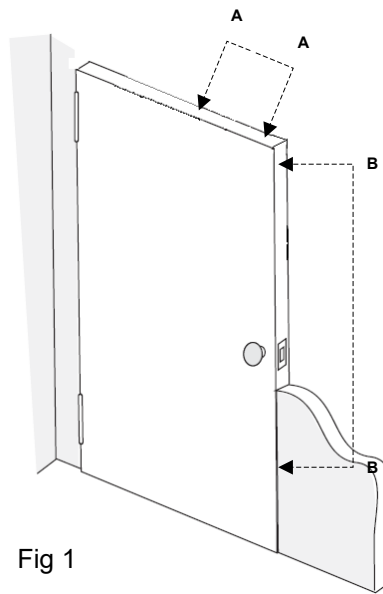
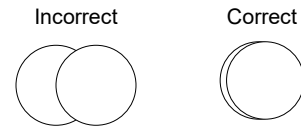


Fig 1

### Contact/Magnet Alignment



**Single Door:** Door status contacts may be installed in locations A or B. See Fig 1

**Double Door:** Door status contacts may be installed in location A. See Fig 1

Drill a 1" hole for the switch & magnet. See Fig 4

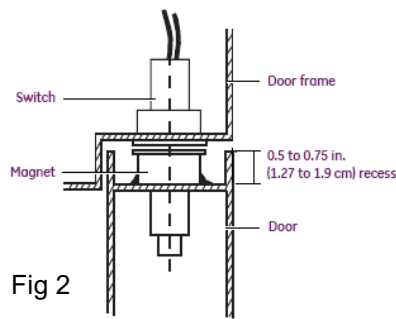


Fig 2

In wood doors drill the hole deep enough so the wire leads will not be crushed when the switch is inserted into the hole. See Fig 4

When mounting the magnet in a metal door the frame on the door may be recessed. The magnet can be raised slightly as long as the body of the magnet provides some support within the hole. Apply rubber silicone around the magnet. See Fig 2

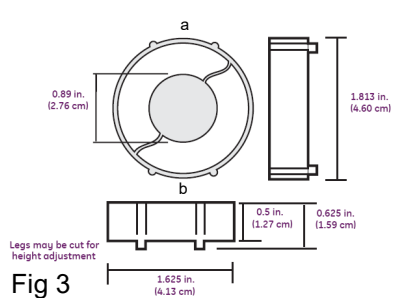


Fig 3

If the metal door has a recessed area too deep to support the magnet, a press fit rare earth magnet may be used. The magnet's outer case is compressed at points a & b, in Fig 3, and placed within the recessed area of the top portion of the door as seen in Fig 2. Once installed place a bead of rubber silicone at the contact points with the door. These magnets will be provided upon request or after it is determined they are needed for the application.

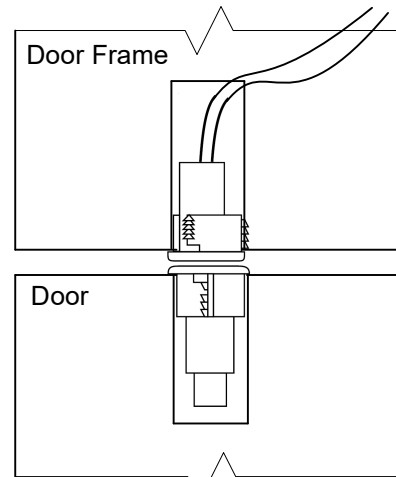


Fig 4

Double doors will have the associated door contacts wired in series as shown in Fig 5.

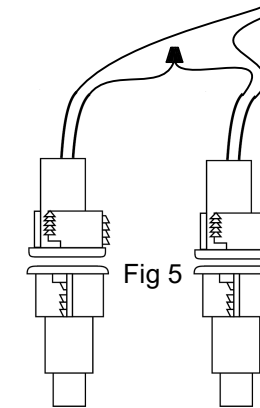


Fig 5

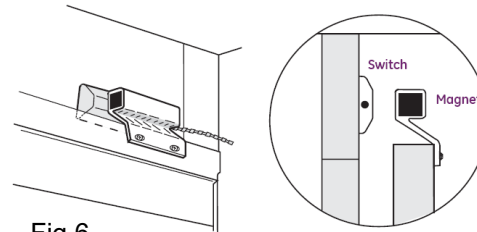


Fig 6

Overhead door contacts may be mounted at the top of the door as shown in Fig 6 or at the bottom of the door as shown in Fig 7 & 8.

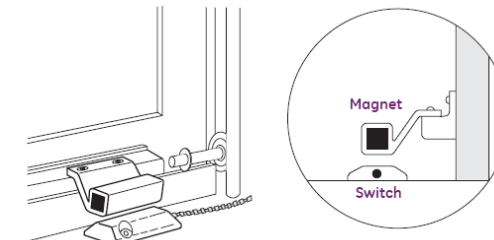


Fig 7

Mounting the contact at the top of the door provides less of a chance that the armored cable will become damaged. The drawback is the bottom of the door could be pried open without tripping the status contact. Contact Environmental Systems Inc.'s Project Manager regarding the correct location for the switch.

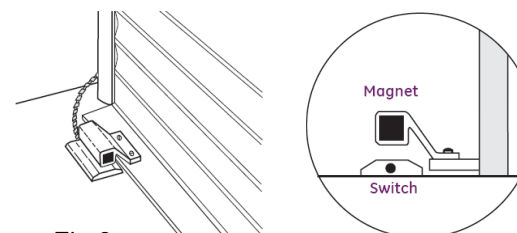


Fig 8

The type of overhead door status contact provided was the specified contact in the bid documents. This contact may not be the best product for every application. Should the installing contractor find the provided product does not work properly for the application please contact the Environmental Systems Inc.'s project manager and a different solution will be provided. See Fig 9 as an example of a substitute solution.

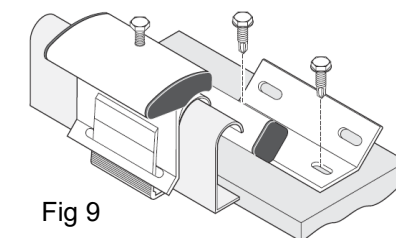


Fig 9

### GENERAL NOTES:

- Cap off all unused wires/connections on all devices.
- For all user activated devices, mount @ 48" above floor, per the American Disabilities Act, NFPA & all applicable codes.
- It is the responsibility of the installer to properly configure the jumpers and switches on all field mounted devices.
- Equipment can be position sensitive. It is the responsibility of the installer to verify proper mounting position per manufacturer's installation instructions.

CAT5e/CAT6 Type A Cable Detail  
TIA/EIA-568-A

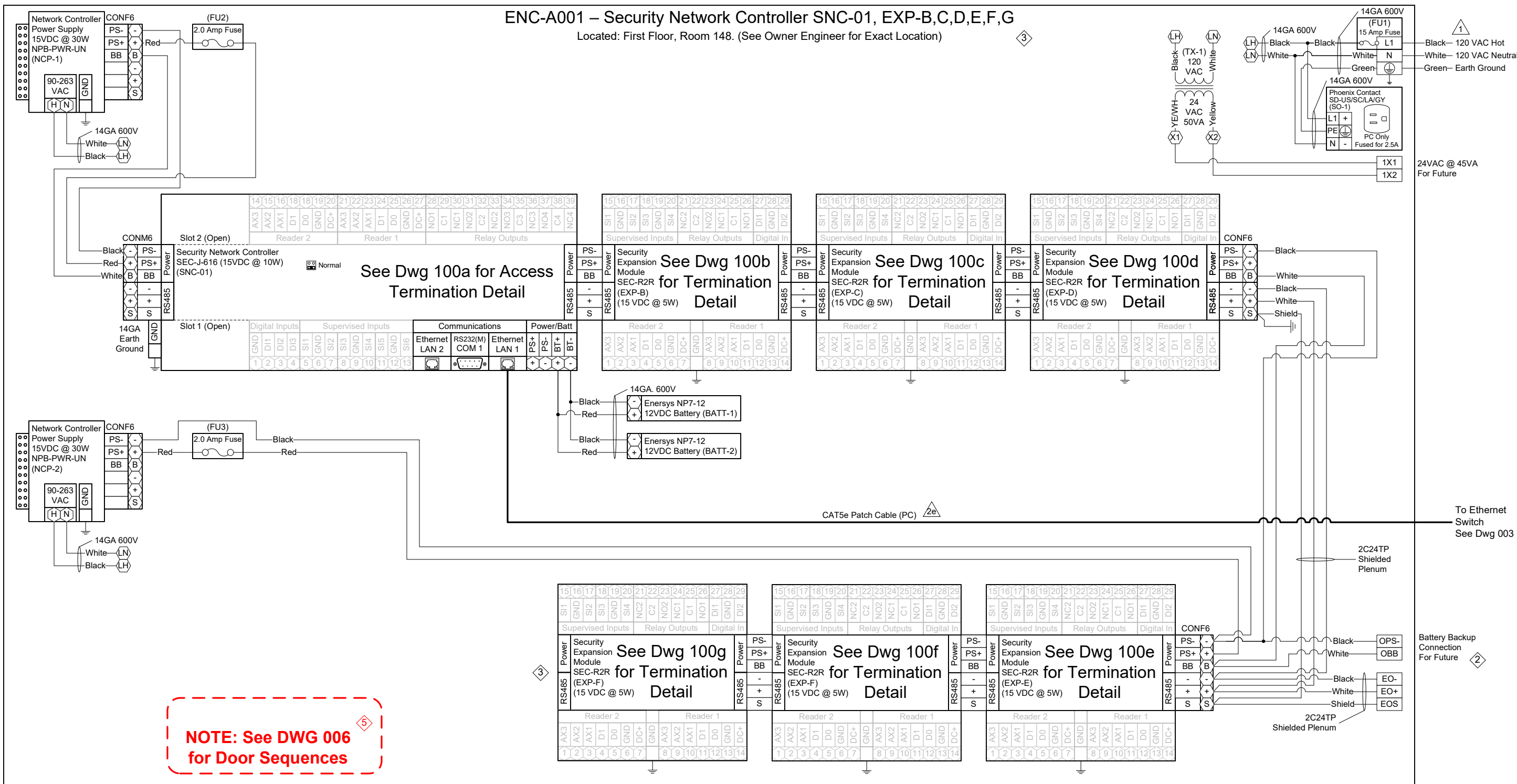
PIN	COLOR
1	White/Green
2	Green
3	White/Orange
4	Blue
5	White/Blue
6	Orange
7	White/Brown
8	Brown

CAT5e/CAT6 Type B Cable Detail  
TIA/EIA-568-B

PIN	COLOR
1	White/Orange
2	Orange
3	White/Green
4	Blue
5	White/Blue
6	Green
7	White/Brown
8	Brown

# ENC-A001 – Security Network Controller SNC-01, EXP-B,C,D,E,F,G

Located: First Floor, Room 148. (See Owner Engineer for Exact Location)



**NOTE: See DWG 006 for Door Sequences**

SNC-001 – ACCESS MODULE SCHEDULE				
ENC:	Module Tag:	Module Type:	Serves:	Termination Detail Dwg:
ENC-A001	SNC-001	SEC-J-601	Door(s) 112A, 114A	100a
	EXP-B	SEC-R2R	Door(s) 119A, 121B	100b
	EXP-C	SEC-R2R	Door(s) 121C, 138A	100c
	EXP-D	SEC-R2R	Door(s) 140A, 144B	100d
	EXP-E	SEC-R2R	Door(s) 145A, 146B	100e
	EXP-F	SEC-R2R	Door(s) 101A, B	100f
	EXP-G	SEC-R2R	Door(s) 116A	100g

**Legend**

XXX Terminal Block

XX Controller Terminal

**JACE-2/6 SERIAL PORT CONFIGURATION JUMPERS**

Normal Serial Shell

- 1 NOTE: Installer to provide main disconnect and branch circuit protection. 120 VAC to be supplied from a dedicated 20 Amp branch circuit, with separate Hot, Neutral and Green equipment grounding conductor. Terminate equipment grounding conductor at branch circuit distribution panel, to panel enclosure or grounding conductor by approved means.
- 3 NOTE: Cap off all unused wires/connections on all devices.
- 6 NOTE: It is the responsibility of the installer to properly configure the jumpers and switches on all field mounted devices.

Access Control Panel - Bill of Material				
Tag	Qty.	Part #	Mfg.	Description
ENC-A001	1	A36N24BLP	Hoffman	36"x24"x8.63" Enclosure
	1	A36N24MPP	Hoffman	36"x24" Panel (Perforated)
SNC-01	1	SEC-J-616	Tridium	Security Network Controller
NCP-1,2	2	NPB-PWR-UN	Tridium	90-230VAC/15VDC 30W Universal Power Supply
EXP-B thru G	6	SEC-R2R	Vykon	2 Reader, 4 UI, 4 DO Security Expansion Module
BATT-1,2	2	NP7-12	Energys	7AmpHr 12VDC Battery
CON F6	4	1757051	Phoenix	Green 5.08 6 Position Female Terminal
CON M6	1	1786213	Phoenix	Green 5.08 6 Position Male Terminal
FU1	1	ATQR-15	Ferraz Shaw mut	600VAC 15 Amp Slow-Blo Fuse
	1	USCC1	Ferraz Shaw mut	Fuse Holder
FU2,3	2	314002	Littel Fuse	120VAC 2.0 Amp Fast-Blo Fuse
PC	1	100404GY/100405GY	BestLink	7/10' CAT5e Ethernet Patch Cable
SO-1	1	SD-US/SC/LA/GY	Phoenix	Single Outlet
TX-1	1	TR50VA009	Functional Devices	120/208/240VAC/24VAC 50VA Transformer

**CBRE | ESI**

www.thinkESI.com

1-800-522-0372

Copyright 2003-2018 ESI. All rights reserved. Do not copy or duplicate without written permission.

TITLE: Dane County - Lyman F. Anderson A & C Center - Card Access System - DC PN 317039

DESCRIPTION: ENC-A001 – Sec. Network Controller SNC-01, EXP-B,C,D,E,F,G – Panel Detail & BOM

JOB #: 22181400010

ADDENDUM No. 1

Modified A Door Acc Equip Loc. Rel to Bid

Engr Comments, Release for Electrical Bid

DATE: 03/13/2018

APPROVED BY: Brett Shinkle

SCALE: NTS

DATE: 06/14/18

DATE: 05/02/18

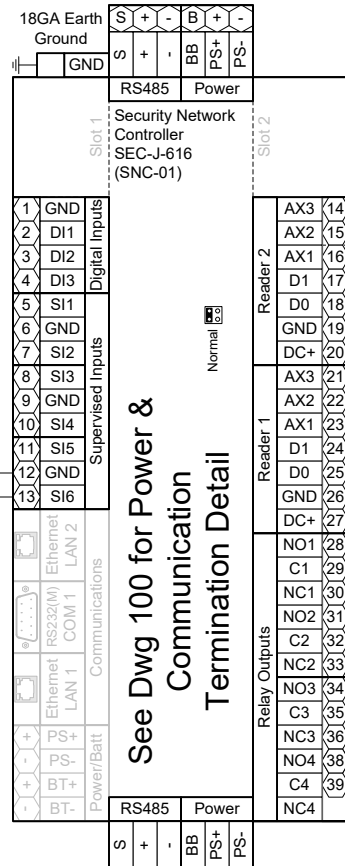
DATE: 03/30/18

DATE: BY

REV.

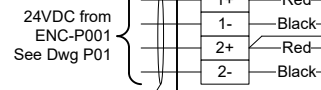
# ENC-A001 – Security Network Controller SNC-01 Doors 112A, 114A

From NCP-1  
See Dwg 100

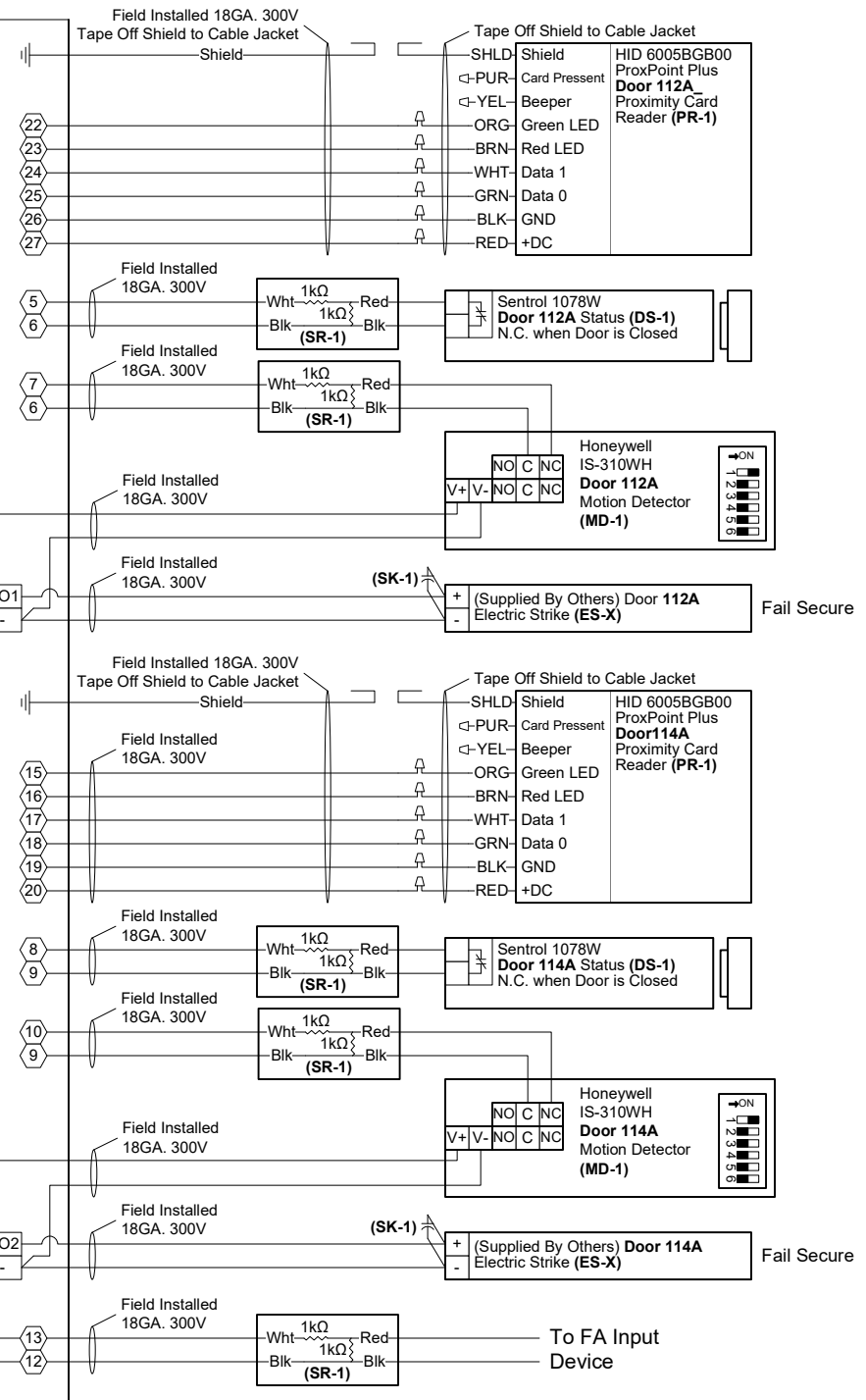


To: EXP-B  
See Dwg 100

See Dwg 100 for Power & Communication Termination Detail



Field Installed 18GA. 300V



Door 112A

Door 114A

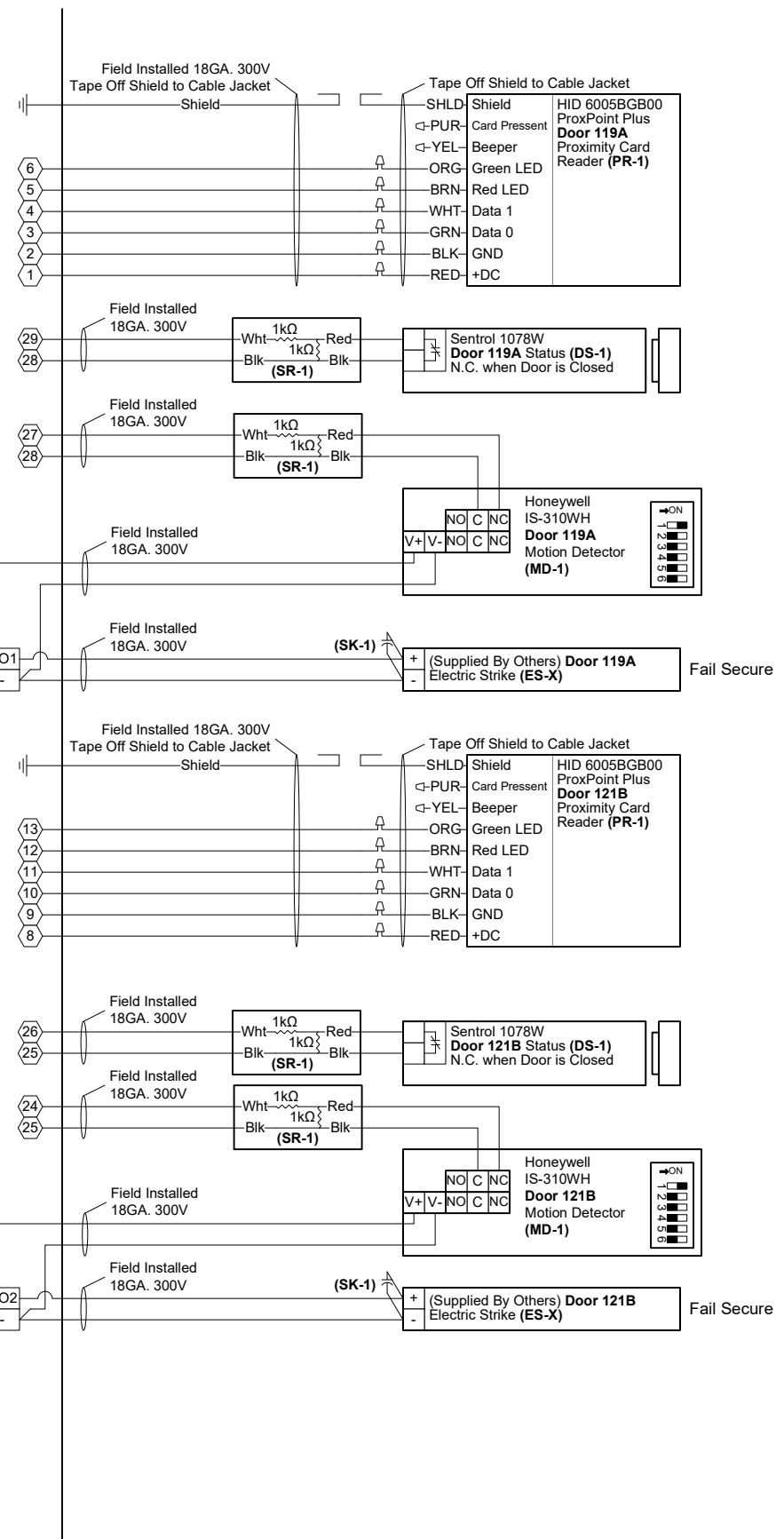
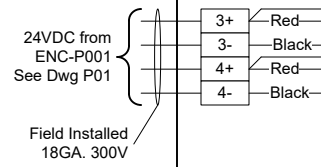
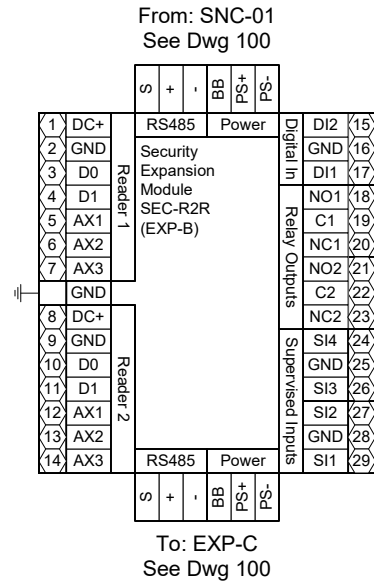
Field Devices - Bill of Material				
Tag	Qty.	Part #	Mfg.	Description
DS-1	2	1078W	Sentrol (By Others)	N.O. Recessed Door Status (1" Dia.)
ES-X	2	By Others	By Others	Electric Door Strike
MD-1	2	IS-310WH	Honeywell (By Others)	Request to Exit - Motion Detector
PR-1	2	6005BGB00	HID (By Others)	Proximity Card Reader
SK-1	2	S4	Northern Computer	S-4 Suppressor Kit
SR-1	5	10747	Tridium	4-Lead Supervisory Resistor Pack

- 3 NOTE: Cap off all unused wires/connections on all devices.
- 5 NOTE: For all user activated devices, mount @ 48" above floor, per the American Disabilities Act, NFPA & all applicable codes.
- 6 NOTE: It is the responsibility of the installer to properly configure the jumpers and switches on all field mounted devices.

TITLE:	Dane County - Lyman F. Anderson A & C Center - Card Access System - DC PN 317039		
DESCRIPTION:	ENC-A001 - SNC-01 - Doors 112A, 114A - Termination Detail & BOM		
JOB #:	22181400010	APPROVED BY:	Brett Shinkle
DATE:	03/13/2018	FILENAME:	Dane Co - Fen Oak - 2018_06_15 - Access Dwg.vsd
DRAWN BY:	Steve Ferns	SCALE:	NTS
DWG PAGE #:	100a	BY	
REV.		DATE	
1		03/30/18	SEF
Engr Comments, Release for Electrical Bid			
DESCRIPTION			

**CBRE|ESI**  
www.thinkESI.com  
1-800-522-0372  
Copyright 2003-2018 ESI. All rights reserved. Do not copy or duplicate without written permission.

ENC-A001 - SNC-01 EXP-B  
Doors 119A, 121B



Door 119A

Door 121B

- 3 NOTE: Cap off all unused wires/connections on all devices.
- 5 NOTE: For all user activated devices, mount @ 48" above floor, per the American Disabilities Act, NFPA & all applicable codes.
- 6 NOTE: It is the responsibility of the installer to properly configure the jumpers and switches on all field mounted devices.

Field Devices - Bill of Material				
Tag	Qty.	Part #	Mfg.	Description
DS-1	2	1078W	Sentrol (By Others)	N.O. Recessed Door Status (1" Dia.)
ES-X	2	By Others	By Others	Electric Door Strike
MD-1	2	IS-310WH	Honeywell (By Others)	Request to Exit - Motion Detector
PR-1	2	6005BGB00	HID (By Others)	Proximity Card Reader
SK-1	2	S4	Northern Computer	S-4 Suppressor Kit
SR-1	4	10747	Tridium	4-Lead Supervisory Resistor Pack

TITLE: Dane County - Lyman F. Anderson A & C Center - Card Access System - DC PN 317039

DESCRIPTION: ENC-A001 - SNC-01 EXP-B - Doors 119A, 121B - Termination Detail & BOM

JOB #: 22181400010

DATE: 03/13/2018

APPROVED BY: Brett Shinkle

SCALE: NTS

FILENAME: Dane Co - Fen Oak - 2018\_06\_15 - Access Dwg.vsd

Engr Comments, Release for Electrical Bid

DATE: 03/30/18

REV. 1

DESCRIPTION

BY

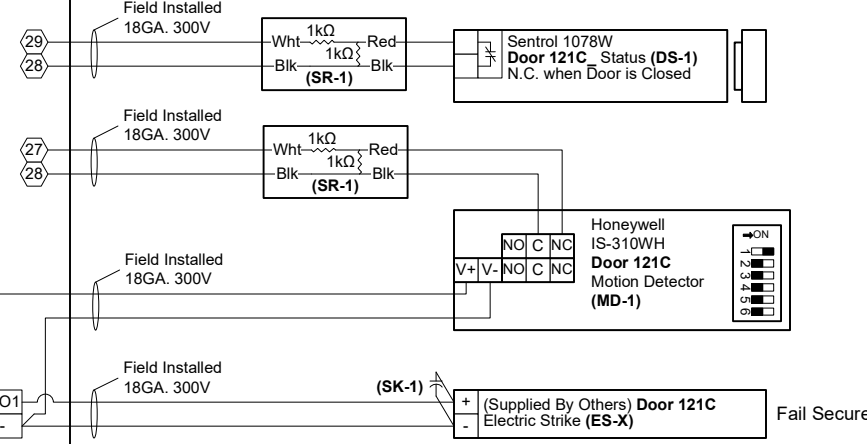
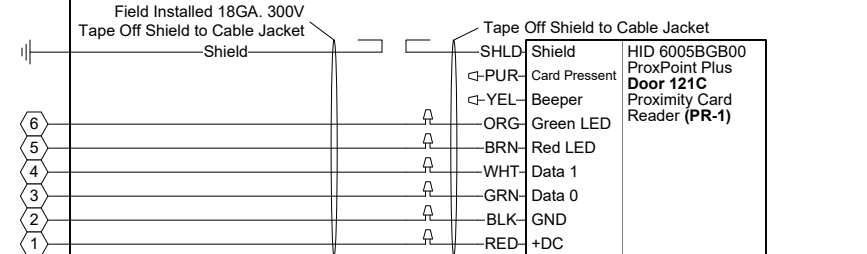
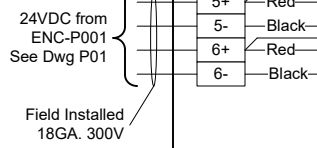
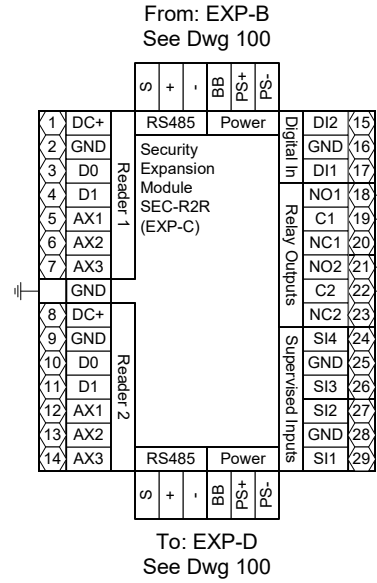
1-800-522-0372

www.thinkESI.com

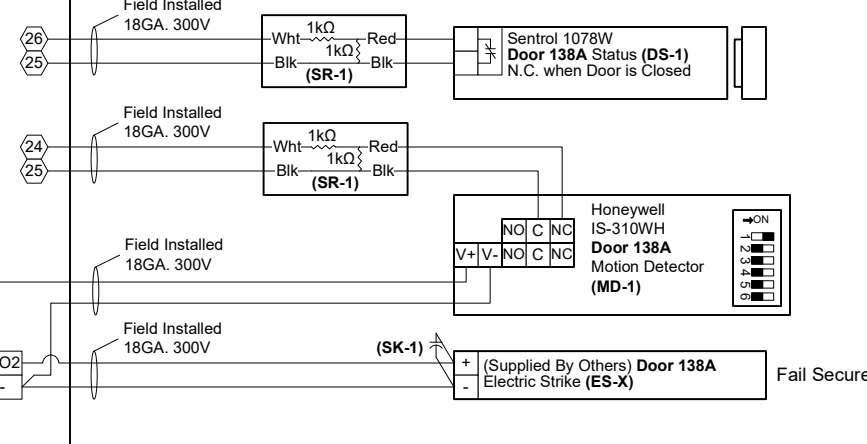
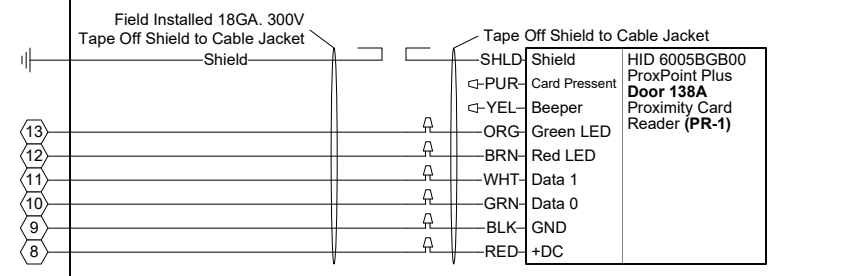
Copyright 2003-2018 ESI. All rights reserved. Do not copy or duplicate without written permission.

**CBRE|ESI**

ENC-A001 - SNC-01 EXP-C  
Doors 121C, 138A



Door 121C



Door 138A

- 3 NOTE: Cap off all unused wires/connections on all devices.
- 5 NOTE: For all user activated devices, mount @ 48" above floor, per the American Disabilities Act, NFPA & all applicable codes.
- 6 NOTE: It is the responsibility of the installer to properly configure the jumpers and switches on all field mounted devices.

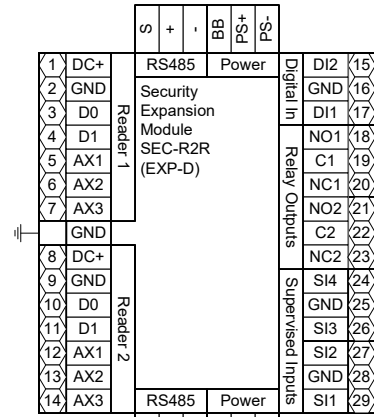
Field Devices - Bill of Material				
Tag	Qty.	Part #	Mfg.	Description
DS-1	2	1078W	Sentrol (By Others)	N.O. Recessed Door Status (1" Dia.)
ES-X	2	By Others	By Others	Electric Door Strike
MD-1	2	IS-310WH	Honeywell (By Others)	Request to Exit - Motion Detector
PR-1	2	6005BGB00	HID (By Others)	Proximity Card Reader
SK-1	2	S4	Northern Computer	S-4 Suppressor Kit
SR-1	4	10747	Tridium	4-Lead Supervisory Resistor Pack

TITLE:	Dane County - Lyman F. Anderson A & C Center - Card Access System - DC PN 317039		
DESCRIPTION:	ENC-A001 - SNC-01 EXP-C - Doors 121C, 138A - Termination Detail & BOM		
JOB #:	22181400010	APPROVED BY:	Brett Shinkle
DATE:	03/13/2018	FILENAME:	Dane Co - Fen Oak - 2018_06_15 - Access Dwg.vsd
DRAWN BY:	Steve Ferns	SCALE:	NTS
DWG PAGE #:	100C	BY	
REV.		DATE	
1	03/30/18	SEF	
Engr Comments, Release for Electrical Bid			

**CBRE|ESI**  
www.thinkESI.com  
1-800-522-0372  
Copyright 2003-2018 ESI. All rights reserved. Do not copy or duplicate without written permission.

ENC-A001 - SNC-01 EXP-D  
Doors 140A, 144A

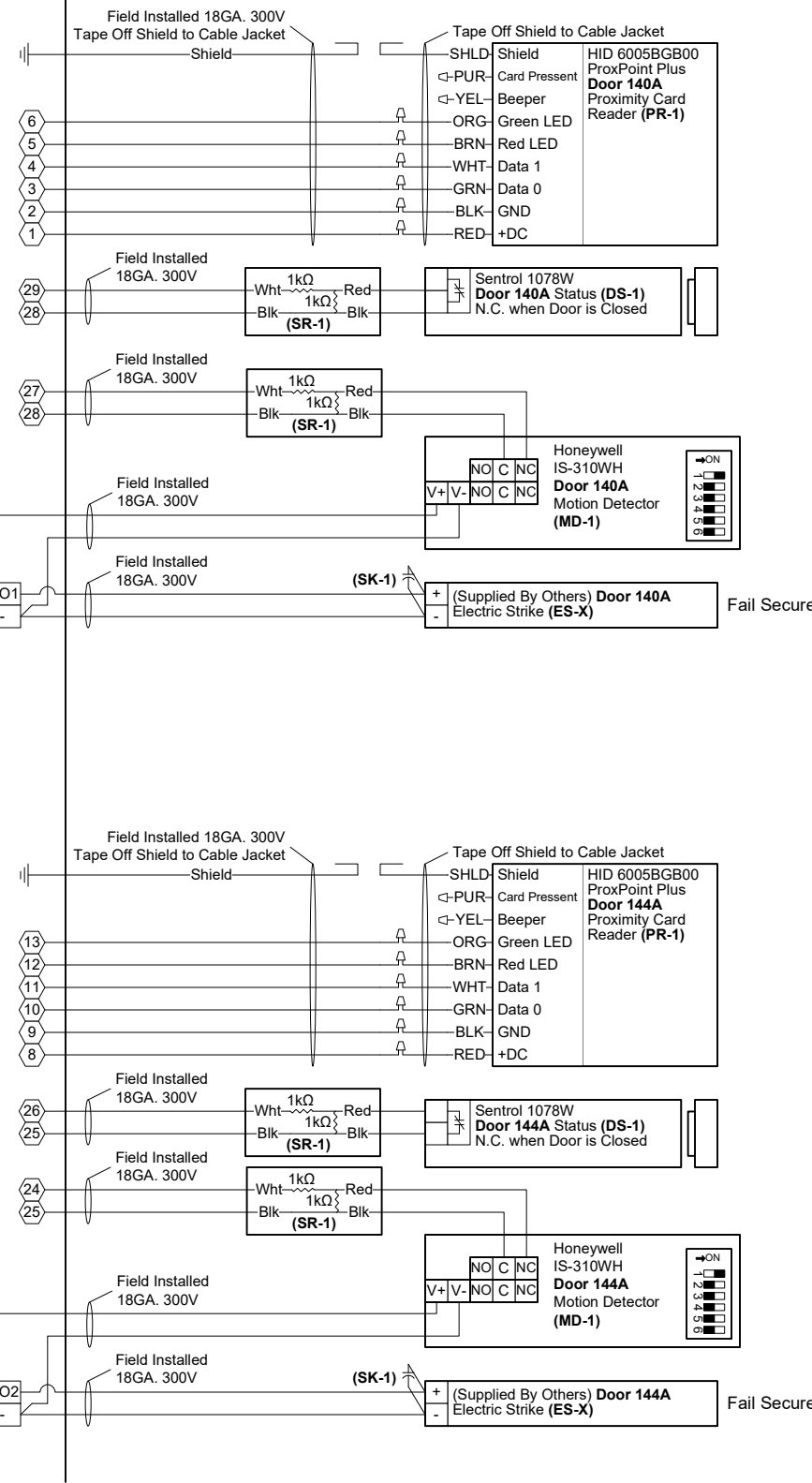
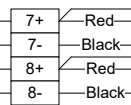
From: EXP-C  
See Dwg 100



See Dwg 100  
For Terminations

24VDC from  
ENC-P001  
See Dwg P01

Field Installed  
18GA. 300V



Door 140A

Door 144A

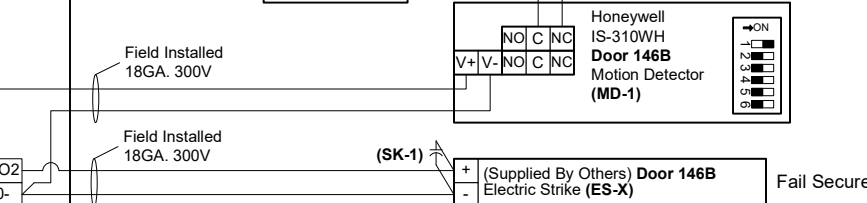
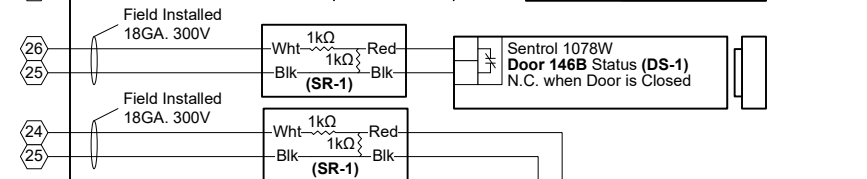
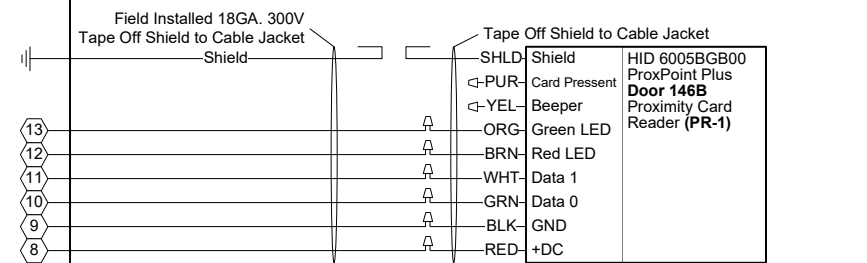
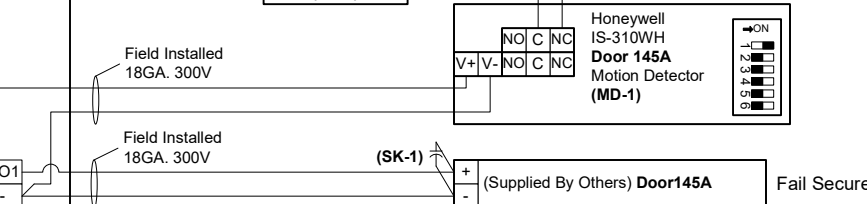
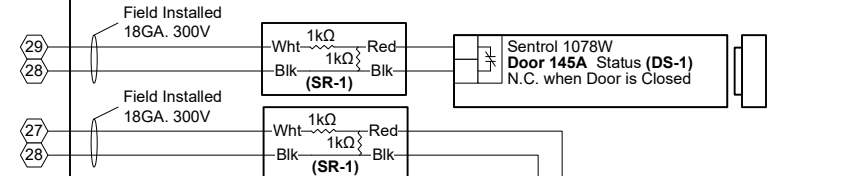
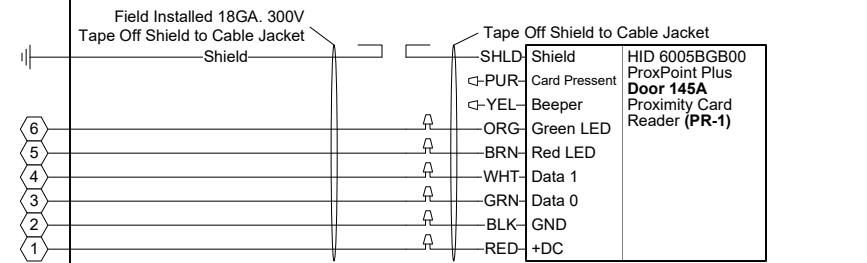
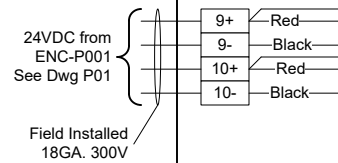
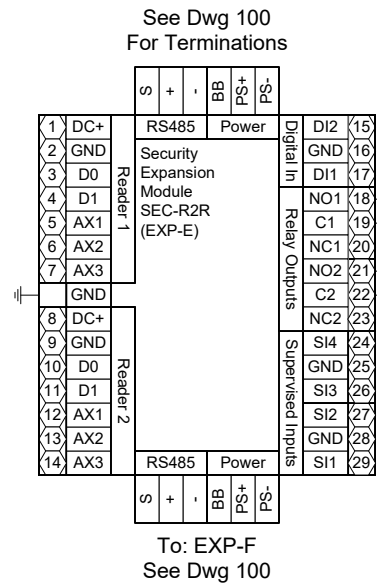
- 3 NOTE: Cap off all unused wires/connections on all devices.
- 5 NOTE: For all user activated devices, mount @ 48" above floor, per the American Disabilities Act, NFPA & all applicable codes.
- 6 NOTE: It is the responsibility of the installer to properly configure the jumpers and switches on all field mounted devices.

Field Devices - Bill of Material				
Tag	Qty.	Part #	Mfg.	Description
DS-1	2	1078W	Sentrol (By Others)	N.O. Recessed Door Status (1" Dia.)
ES-X	2	By Others	By Others	Electric Door Strike
MD-1	2	IS-310WH	Honeywell (By Others)	Request to Exit - Motion Detector
PR-1	2	6005BGB00	HID (By Others)	Proximity Card Reader
SK-1	2	S4	Northern Computer	S-4 Suppressor Kit
SR-1	4	10747	Tridium	4-Lead Supervisory Resistor Pack

TITLE:	Dane County - Lyman F. Anderson A & C Center - Card Access System - DC PN 317039
DESCRIPTION:	ENC-A001 - SNC-01 EXP-D - Doors 140A, 144A - Termination Detail & BOM
JOB #:	22181400010
DATE:	03/13/2018
APPROVED BY:	Brett Shinkle
FILENAME:	Dane Co - Fen Oak - 2018_06_15 - Access Dwg.vsd
SCALE:	NTS
DWG PAGE #:	1000
DATE:	03/30/18
BY:	SEF
REV.	

**CBRE|ESI**  
www.thinkESI.com  
1-800-522-0372  
Copyright 2003-2018 ESI. All rights reserved. Do not copy or duplicate without written permission.

ENC-A001 - SNC-01 EXP-E  
Doors 145A, 146B



Door 145A

Door 146B

- 3 NOTE: Cap off all unused wires/connections on all devices.
- 5 NOTE: For all user activated devices, mount @ 48" above floor, per the American Disabilities Act, NFPA & all applicable codes.
- 6 NOTE: It is the responsibility of the installer to properly configure the jumpers and switches on all field mounted devices.

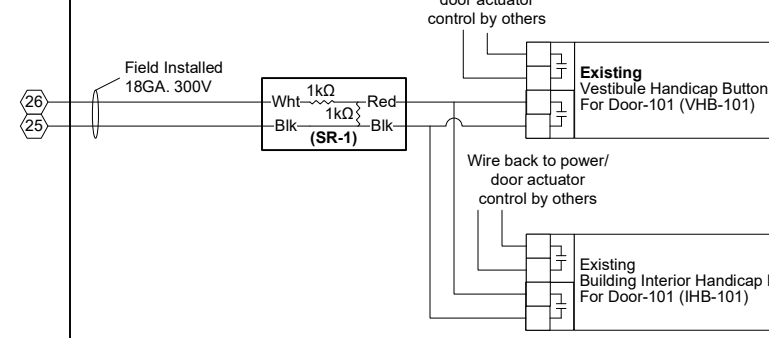
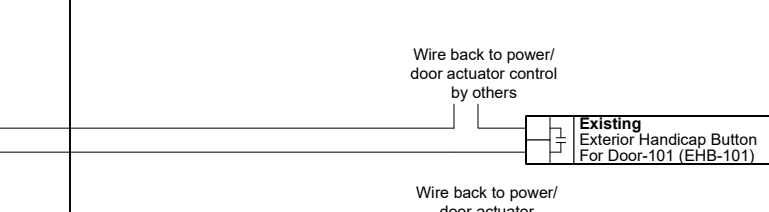
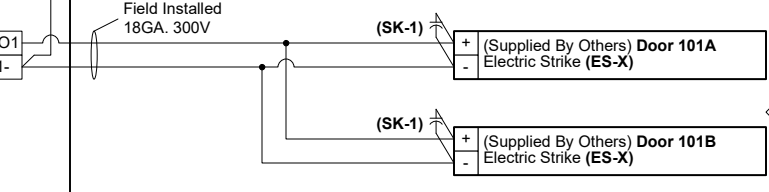
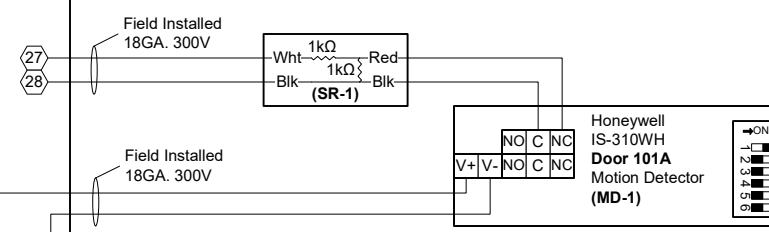
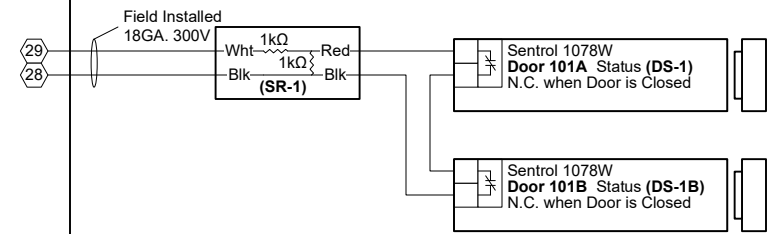
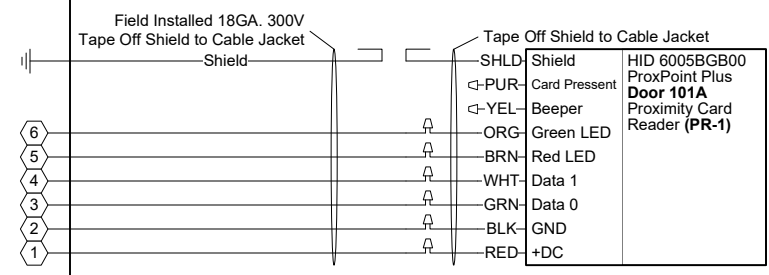
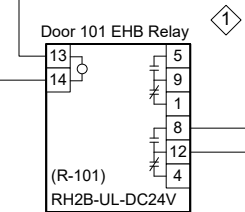
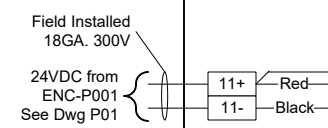
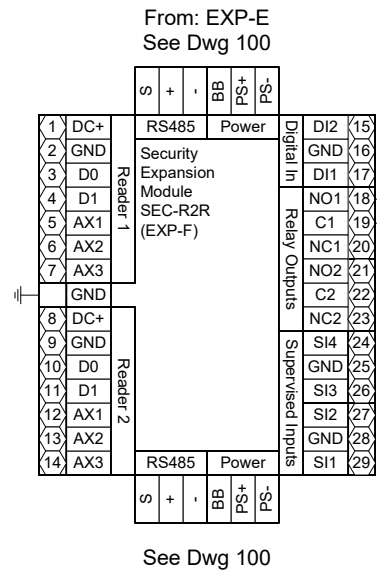
Field Devices - Bill of Material				
Tag	Qty.	Part #	Mfg.	Description
DS-1	2	1078W	Sentrol (By Others)	N.O. Recessed Door Status (1" Dia.)
ES-X	2	By Others	By Others	Electric Door Strike
MD-1	2	IS-310WH	Honeywell (By Others)	Request to Exit - Motion Detector
PR-1	2	6005BGB00	HID (By Others)	Proximity Card Reader
SK-1	2	S4	Northern Computer	S-4 Suppressor Kit
SR-1	4	10747	Tridium	4-Lead Supervisory Resistor Pack

TITLE:	Dane County - Lyman F. Anderson A & C Center - Card Access System - DC PN 317039
DESCRIPTION:	ENC-A001 - SNC-01 EXP-E - Doors 145A, 146B - Termination Detail & BOM
JOB #:	22181400010
DATE:	03/13/2018
APPROVED BY:	Brett Shinkle
SCALE:	NTS
FILENAME:	Dane Co - Fen Oak - 2018_06_15 - Access Dwg.vsd
DRAWN BY:	Steve Ferns
DWG PAGE #:	100e
REV.	DESCRIPTION
1	Engr Comments, Release for Electrical Bid
DATE	03/30/18
BY	SEF

**CBRE|ESI**  
www.thinkESI.com  
1-800-522-0372  
Copyright 2003-2018 ESI. All rights reserved. Do not copy or duplicate without written permission.



ENC-A001 - SNC-01 EXP-F  
Door 101A, 101B



Field Devices - Bill of Material				
Tag	Qty.	Part #	Mfg.	Description
DS-1	2	1078W	Sentrol (By Others)	N.O. Recessed Door Status (1" Dia.)
ES-X	1	By Others	By Others	Electric Door Strike
MD-1	1	IS-310WH	Honeywell (By Others)	Request to Exit Motion Detector
PR-1	2	6005BGB00	HID (By Others)	Proximity Card Reader
SK-1	2	S4	Northern Computer	S-4 Suppressor Kit
SR-1	3	10747	Tridium	4-Lead Supervisory Resistor Pack
R-101	1	RH2B-UL DC24V	IDEC	DPDT Relay w ith indicator
	1	SH2B-05	IDEC	Standard DIN Rail Mount

- 3 NOTE: Cap off all unused wires/connections on all devices.
- 5 NOTE: For all user activated devices, mount @ 48" above floor, per the American Disabilities Act, NFPA & all applicable codes.
- 6 NOTE: It is the responsibility of the installer to properly configure the jumpers and switches on all field mounted devices.

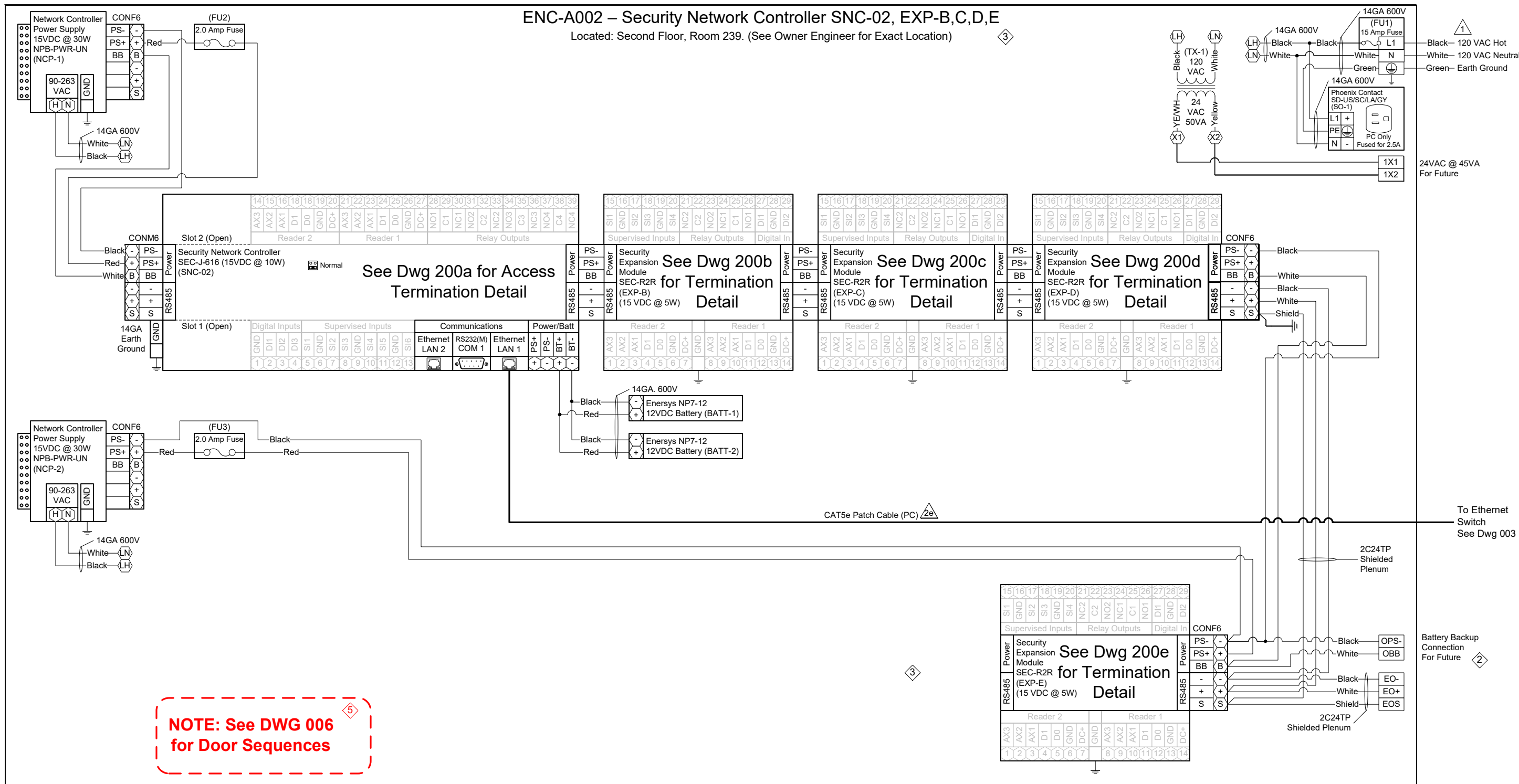
**CBRE|ESI**  
www.thinkESI.com  
1-800-522-0372  
Copyright 2003-2018 ESI. All rights reserved. Do not copy or duplicate without written permission.

TITLE: Dane County - Lyman F. Anderson A & C Center - Card Access System - DC PN 317039  
DESCRIPTION: ENC-A001 - SNC-01 EXP-F - Doors 101A, 101B - Termination Detail & BOM  
JOB #: 22181400010  
DRAWN BY: Steve Ferns  
DATE: 03/13/2018  
APPROVED BY: Brett Shinkle  
FILENAME: Dane Co - Fen Oak - 2018\_06\_15 - Access Dwg.vsd  
DWG PAGE #: 100F  
SCALE: NTS  
DATE: 05/02/18  
DATE: 03/30/18  
BY: SEF  
REV. DESCRIPTION



# ENC-A002 – Security Network Controller SNC-02, EXP-B,C,D,E

Located: Second Floor, Room 239. (See Owner Engineer for Exact Location)



**NOTE: See DWG 006 for Door Sequences**

SNC-002 – ACCESS MODULE SCHEDULE				
ENC:	Module Tag:	Module Type:	Serves:	Termination Detail Dwg:
ENC-A002	SNC-002	SEC-J-601	Door(s) 234B,218A	200a
	EXP-B	SEC-R2R	Door(s) 224A, 210A	200b
	EXP-C	SEC-R2R	Door(s) 208A, 227A	200c
	EXP-D	SEC-R2R	Door(s) 226A, 235A	200d
	EXP-E	SEC-R2R	Door(s) 228A	200e

Legend	
XXX	Terminal Block
XX	Controller Terminal
JACE-2/6 SERIAL PORT CONFIGURATION JUMPERS	
	Normal
	Serial Shell

- 1 NOTE: Installer to provide main disconnect and branch circuit protection. 120 VAC to be supplied from a dedicated 20 Amp branch circuit, with separate Hot, Neutral and Green equipment grounding conductor. Terminate equipment grounding conductor at branch circuit distribution panel, to panel enclosure or grounding conductor by approved means.
- 3 NOTE: Cap off all unused wires/connections on all devices.
- 6 NOTE: It is the responsibility of the installer to properly configure the jumpers and switches on all field mounted devices.

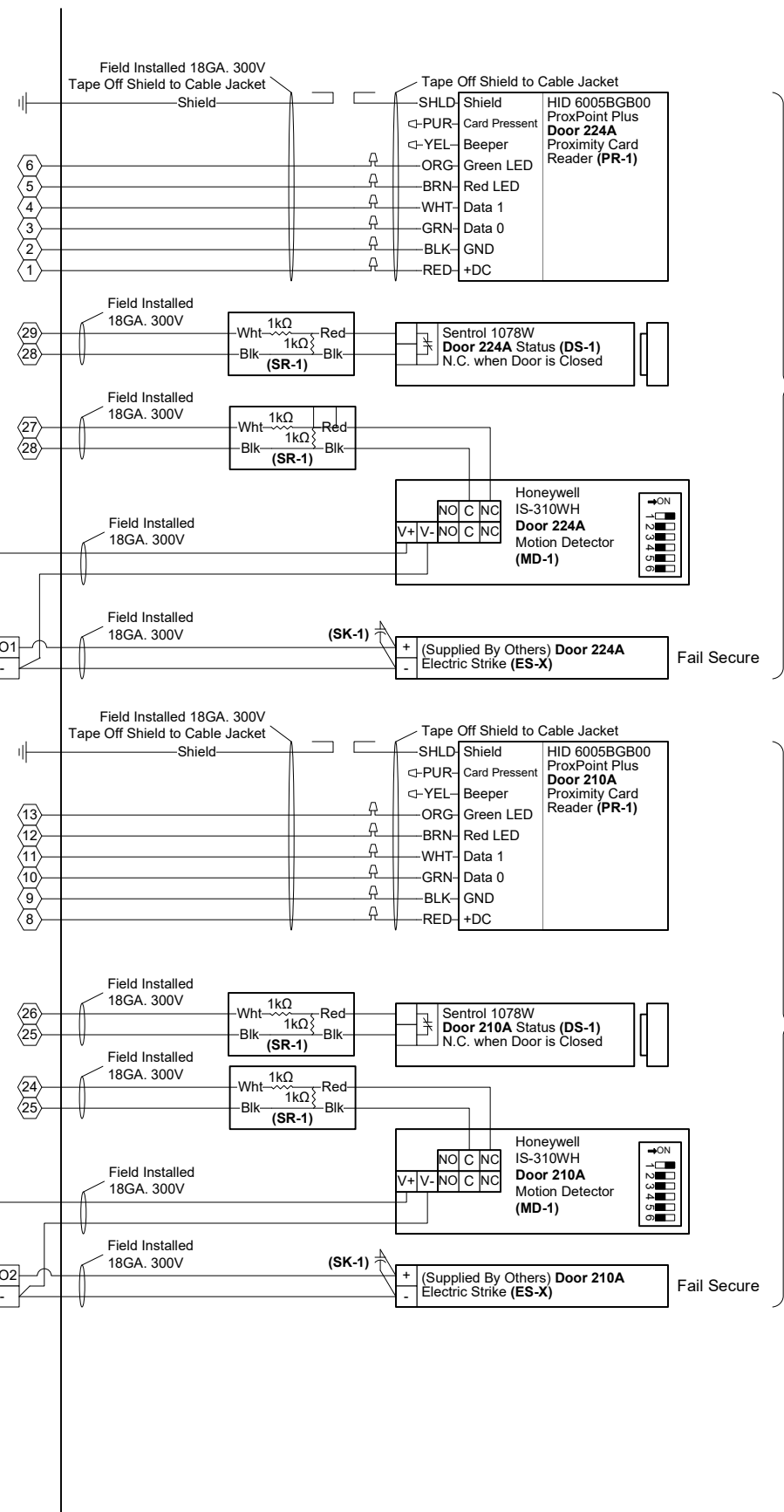
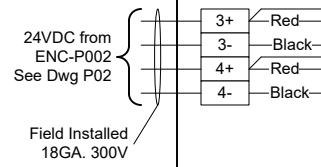
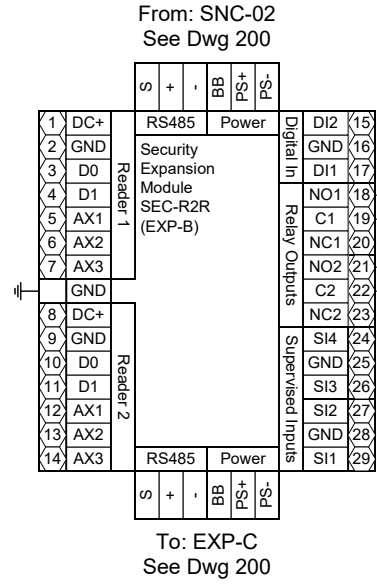
Access Control Panel - Bill of Material				
Tag	Qty.	Part #	Mfg.	Description
ENC-A002	1	A36N24BLP	Hoffman	36"x24"x8.63" Enclosure
	1	A36N24MPP	Hoffman	36"x24" Panel (Perforated)
SNC-02	1	SEC-J-616	Tridium	Security Network Controller
NCP-1,2	2	NPB-PWR-UN	Tridium	90-230VAC/15VDC 30W Universal Power Supply
EXP-B thru E	4	SEC-R2R	Vykon	2 Reader, 4 UI, 4 DO Security Expansion Module
BATT-1,2	2	NP7-12	Energys	7AmpHr 12VDC Battery
CON F6	4	1757051	Phoenix	Green 5.08 6 Position Female Terminal
CON M6	1	1786213	Phoenix	Green 5.08 6 Position Male Terminal
FU1	1	ATQR-15	Ferraz Shaw mut	600VAC 15 Amp Slow -Blo Fuse
	1	USCC1	Ferraz Shaw mut	Fuse Holder
FU2,3	2	314002	Littel Fuse	120VAC 2.0 Amp Fast-Blo Fuse
PC	1	100404GY/100405GY	BestLink	7/10' CAT5e Ethernet Patch Cable
SO-1	1	SD-US/SC/LA/GY	Phoenix	Single Outlet
TX-1	1	TR50VA009	Functional Devices	120/208/240VAC/24VAC 50VA Transformer

**CBRE | ESI**  
www.thinkESI.com  
1-800-522-0372  
Copyright 2003-2018 ESI. All rights reserved. Do not copy or duplicate without written permission.

TITLE: Dane County - Lyman F. Anderson A & C Center - Card Access System - DC PN 317039  
 DESCRIPTION: ENC-A002 – Sec. Network Controller SNC-02, EXP-B,C,D,E – Panel Detail & BOM  
 JOB #: 22181400010  
 DRAWN BY: Steve Ferns  
 APPROVED BY: Brett Shinkle  
 DATE: 03/13/2018  
 DWG PAGE #: 200  
 SCALE: NTS  
 FILENAME: Dane Co - Fen Oak - 2018\_06\_15 - Access Dwg.vsd



ENC-A002 - SNC-02 EXP-B  
Doors 224A, 210A



Door 224A

Door 210A

- 3 NOTE: Cap off all unused wires/connections on all devices.
- 5 NOTE: For all user activated devices, mount @ 48" above floor, per the American Disabilities Act, NFPA & all applicable codes.
- 6 NOTE: It is the responsibility of the installer to properly configure the jumpers and switches on all field mounted devices.

Field Devices - Bill of Material				
Tag	Qty.	Part #	Mfg.	Description
DS-1	2	1078W	Sentrol (By Others)	N.O. Recessed Door Status (1" Dia.)
ES-X	2	By Others	By Others	Electric Door Strike
MD-1	2	IS-310WH	Honeywell (By Others)	Request to Exit - Motion Detector
PR-1	2	6005BGB00	HID (By Others)	Proximity Card Reader
SK-1	2	S4	Northern Computer	S-4 Suppressor Kit
SR-1	4	10747	Tridium	4-Lead Supervisory Resistor Pack

TITLE: Dane County - Lyman F. Anderson A & C Center - Card Access System - DC PN 317039

DESCRIPTION: ENC-A002 - SNC-02 EXP-B - Doors 224A, 210A - Termination Detail & BOM

JOB #: 22181400010

DATE: 03/13/2018

APPROVED BY: Brett Shinkle

SCALE: NTS

FILENAME: Dane Co - Fen Oak - 2018\_06\_15 - Access Dwg.vsd

Engr Comments, Release for Electrical Bid

DATE: 03/30/18

REV. 1

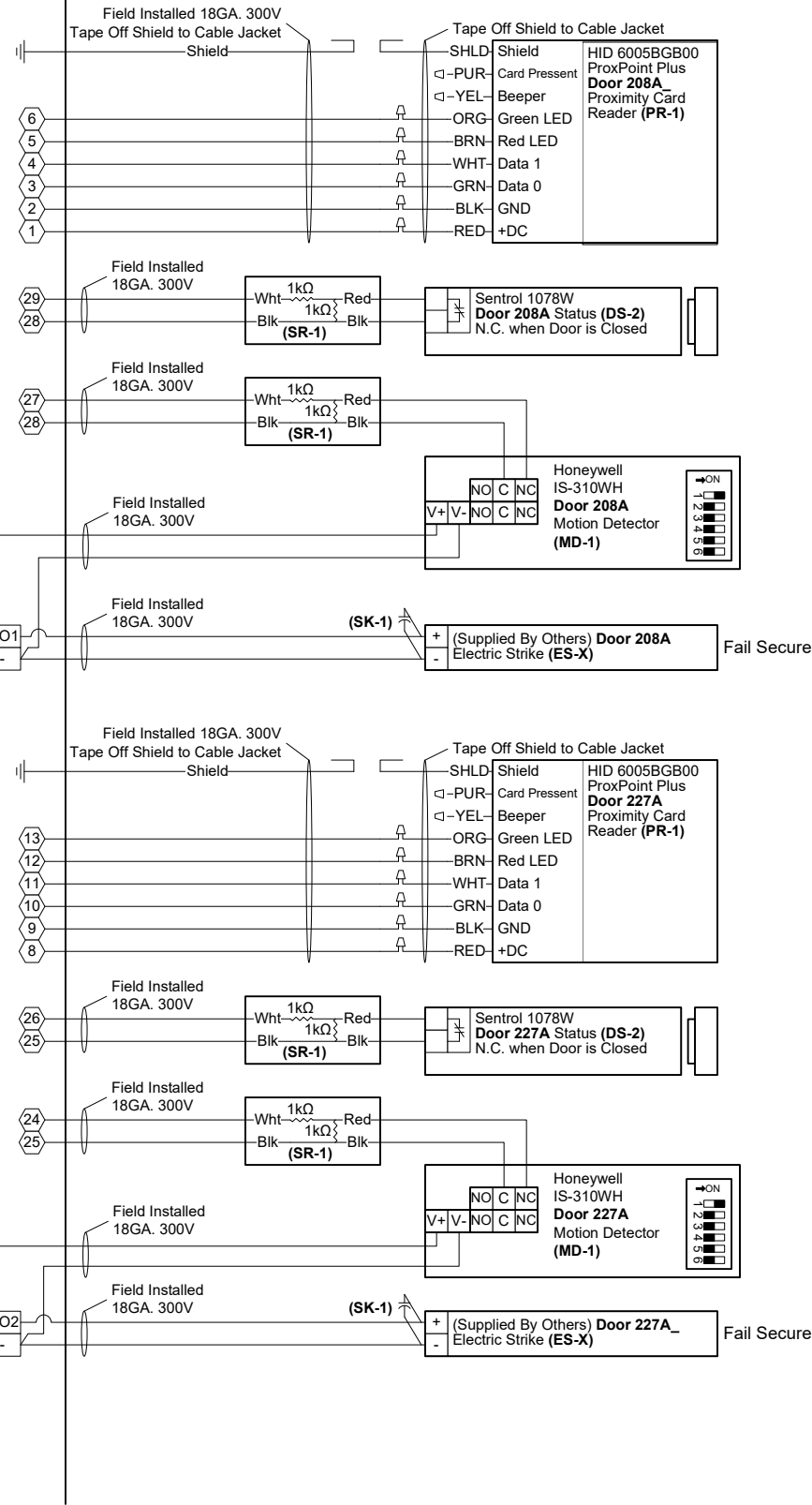
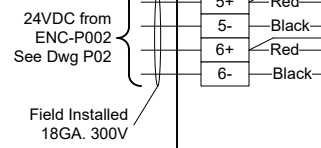
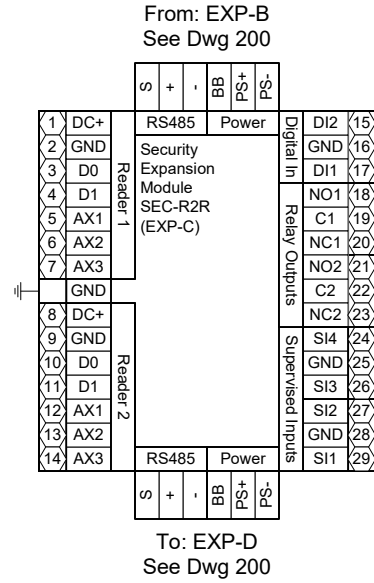
DESCRIPTION

BY

DATE

REV.

ENC-A002 - SNC-02 EXP-C  
Doors 208A, 227A



Door 208A

Door 227A

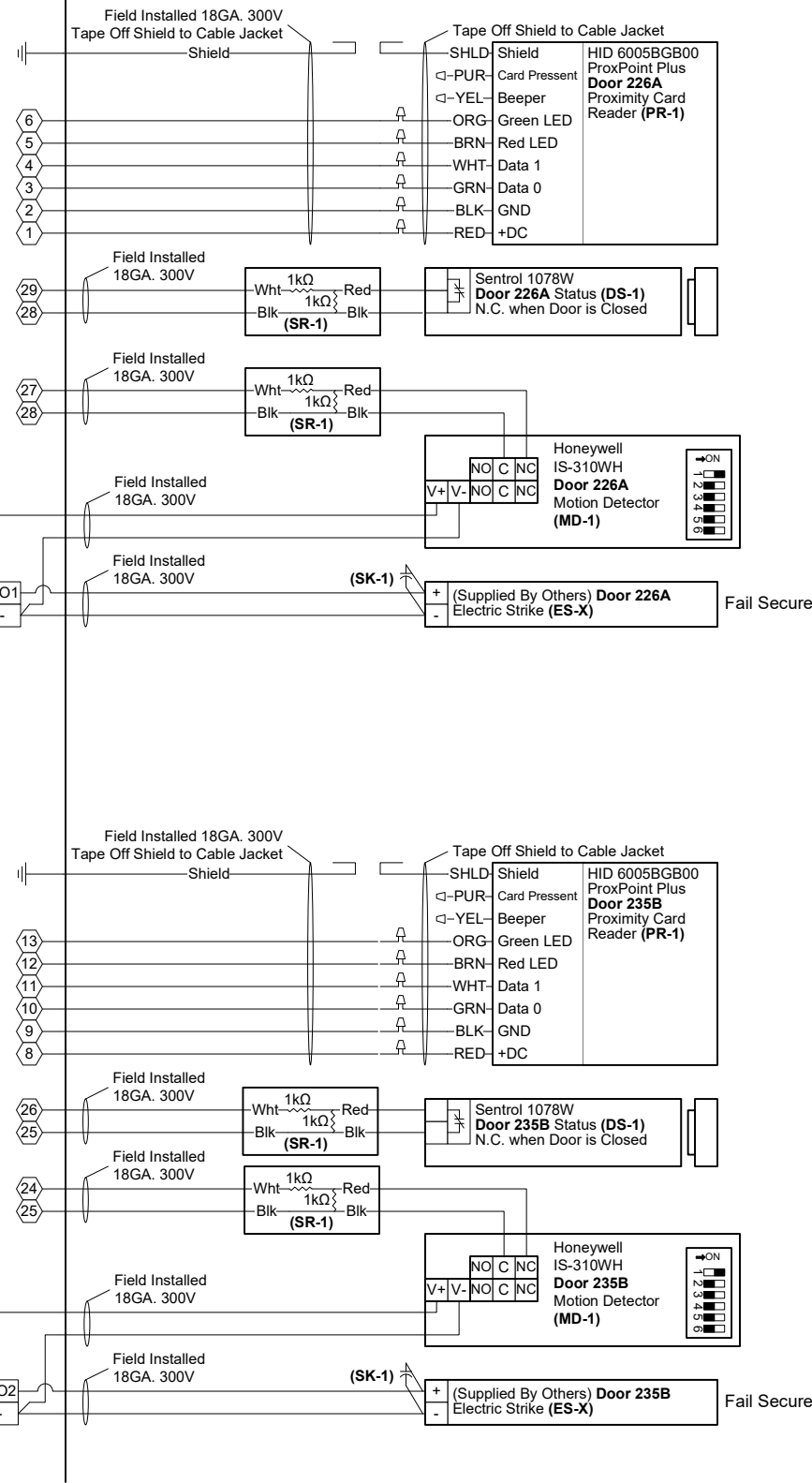
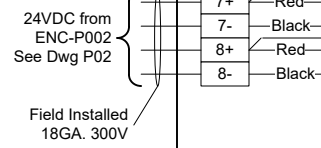
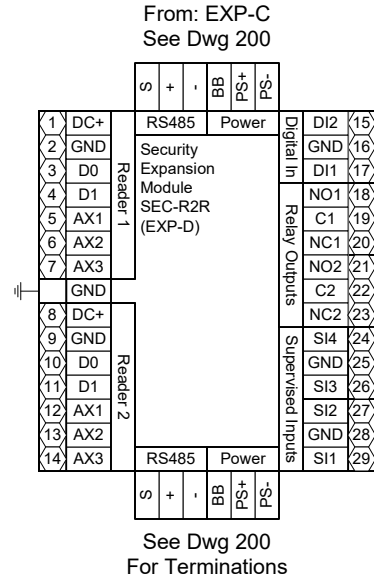
- 3 NOTE: Cap off all unused wires/connections on all devices.
- 5 NOTE: For all user activated devices, mount @ 48" above floor, per the American Disabilities Act, NFPA & all applicable codes.
- 6 NOTE: It is the responsibility of the installer to properly configure the jumpers and switches on all field mounted devices.

Field Devices - Bill of Material				
Tag	Qty.	Part #	Mfg.	Description
DS-1	2	1078W	Sentrol (By Others)	N.O. Recessed Door Status (1" Dia.)
ES-X	2	By Others	By Others	Electric Door Strike
MD-1	2	IS-310WH	Honeywell (By Others)	Request to Exit - Motion Detector
PR-1	2	6005BGB00	HID (By Others)	Proximity Card Reader
SK-1	2	S4	Northern Computer	S-4 Suppressor Kit
SR-1	4	10747	Tridium	4-Lead Supervisory Resistor Pack

TITLE:	Dane County - Lyman F. Anderson A & C Center - Card Access System - DC PN 317039		
DESCRIPTION:	ENC-A002 - SNC-02 EXP-C - Doors 208A, 227A - Termination Detail & BOM		
JOB #:	22181400010	APPROVED BY:	Brett Shinkle
DATE:	03/13/2018	FILENAME:	Dane Co - Fen Oak - 2018_06_15 - Access Dwg.vsd
DRAWN BY:	Steve Ferns	SCALE:	NTS
DWG PAGE #:	200C	BY	
REV.		DATE	
1	03/30/18	SEF	
Engr Comments, Release for Electrical Bid			

**CBRE|ESI**  
www.thinkESI.com  
1-800-522-0372  
Copyright 2003-2018 ESI. All rights reserved. Do not copy or duplicate without written permission.

ENC-A002 - SNC-02 EXP-D  
Doors 226A, 235B



Door 226A

Door 235B

- 3 NOTE: Cap off all unused wires/connections on all devices.
- 5 NOTE: For all user activated devices, mount @ 48" above floor, per the American Disabilities Act, NFPA & all applicable codes.
- 6 NOTE: It is the responsibility of the installer to properly configure the jumpers and switches on all field mounted devices.

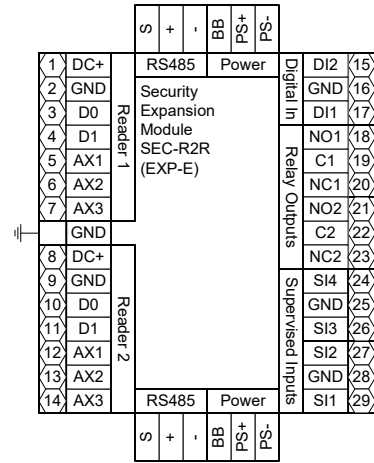
Field Devices - Bill of Material				
Tag	Qty.	Part #	Mfg.	Description
DS-1	2	1078W	Sentrol (By Others)	N.O. Recessed Door Status (1" Dia.)
ES-X	2	By Others	By Others	Electric Door Strike
MD-1	2	IS-310WH	Honeywell (By Others)	Request to Exit - Motion Detector
PR-1	2	6005BGB00	HID (By Others)	Proximity Card Reader
SK-1	2	S4	Northern Computer	S-4 Suppressor Kit
SR-1	4	10747	Tridium	4-Lead Supervisory Resistor Pack

TITLE:	Dane County - Lyman F. Anderson A & C Center - Card Access System - DC PN 317039
DESCRIPTION:	ENC-A002 - SNC-02 EXP-D - Doors 226A, 235B - Termination Detail & BOM
JOB #:	22181400010
DATE:	03/13/2018
APPROVED BY:	Brett Shinkle
FILENAME:	Dane Co - Fen Oak - 2018_06_15 - Access Dwg.vsd
SCALE:	NTS
DWG PAGE #:	2000
REV.	DATE
1	03/30/18
Engr Comments, Release for Electrical Bid	SEF
	BY

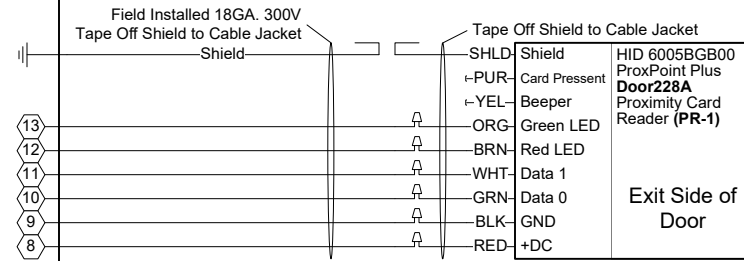
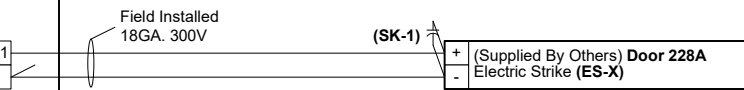
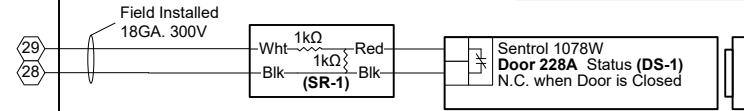
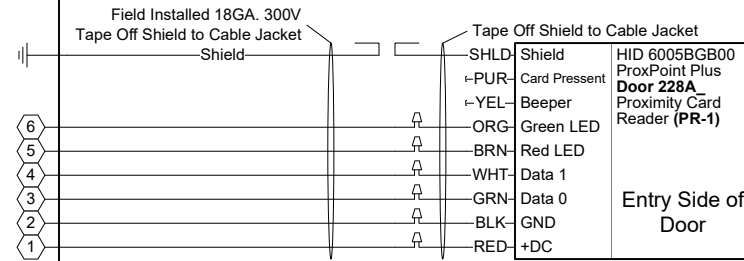
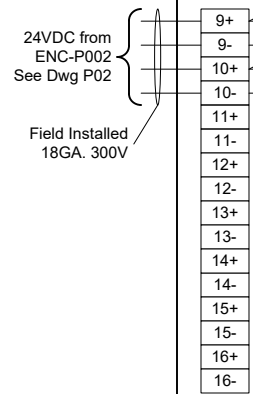
**CBRE|ESI**  
www.thinkESI.com  
1-800-522-0372  
Copyright 2003-2018 ESI. All rights reserved. Do not copy or duplicate without written permission.

ENC-A002 - SNC-02 EXP-E  
Door 228A

From: EXP-D  
See Dwg 200



See Dwg 200



- 3 NOTE: Cap off all unused wires/connections on all devices.
- 5 NOTE: For all user activated devices, mount @ 48" above floor, per the American Disabilities Act, NFPA & all applicable codes.
- 6 NOTE: It is the responsibility of the installer to properly configure the jumpers and switches on all field mounted devices.

Field Devices - Bill of Material				
Tag	Qty.	Part #	Mfg.	Description
DS-1	1	1078W	Sentrol (By Others)	N.O. Recessed Door Status (1" Dia.)
ES-X	1	By Others	By Others	Electric Door Strike
PR-1	1	6005BGB00	HID (By Others)	Proximity Card Reader
SK-1	1	S4	Northern Computer	S-4 Suppressor Kit
SR-1	1	10747	Tridium	4-Lead Supervisory Resistor Pack

TITLE:	Dane County - Lyman F. Anderson A & C Center - Card Access System - DC PN 317039		
DESCRIPTION:	ENC-A002 - SNC-02 EXP-E - Doors 228A - Termination Detail & BOM		
JOB #:	22181400010	DATE:	03/13/2018
Modified A Door Acc Equip Loc. Rel to Bid	SEF	05/02/18	SEF
Engr Comments, Release for Electrical Bid	SEF	03/30/18	SEF
DRAWN BY:	Steve Ferns	APPROVED BY:	Brett Shinkle
DWG PAGE #:	200e	SCALE:	NTS
FILENAME:	Dane Co - Fen Oak - 2018_06_15 - Access Dwg.vsd		

**CBRE|ESI**

www.thinkESI.com

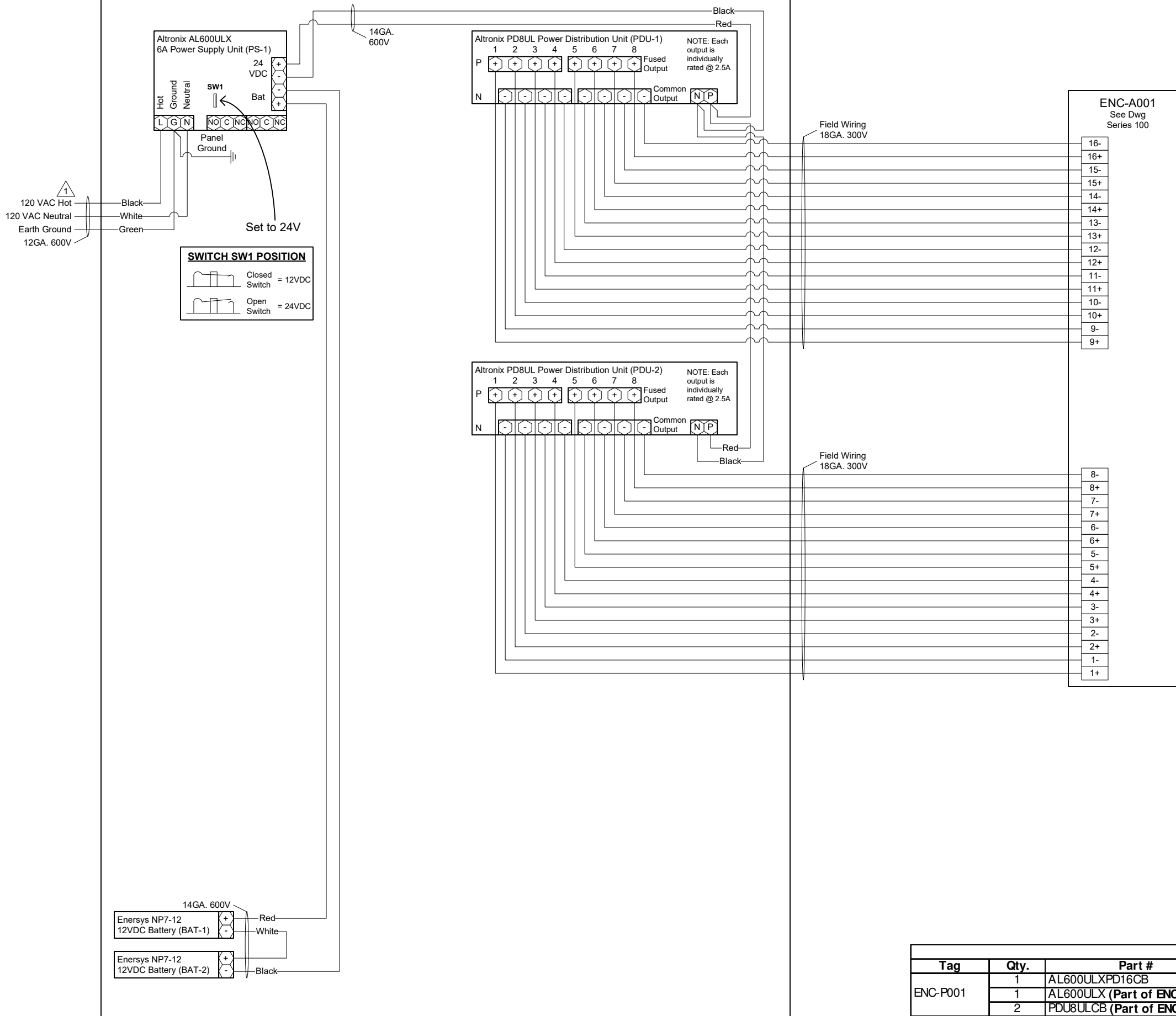
1-800-522-0372

Copyright 2003-2018 ESI. All rights reserved. Do not copy or duplicate without written permission.



# ENC-P001 – Power Distribution Panel

Located: First Floor, Room 148. (See Client Engineer for Exact Location)



**1** NOTE: Installer to Provide Main Disconnect and Branch Circuit Protection. 120 VAC to be supplied from a dedicated 20 Amp Branch Circuit, with separate Hot, Neutral and Green Equipment Grounding Conductor. Terminate Equipment Grounding Conductor at Branch Circuit Distribution Panel, to Panel Enclosure or Grounding Conductor by Approved Means.

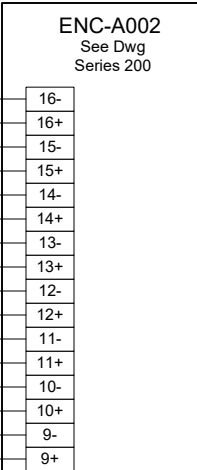
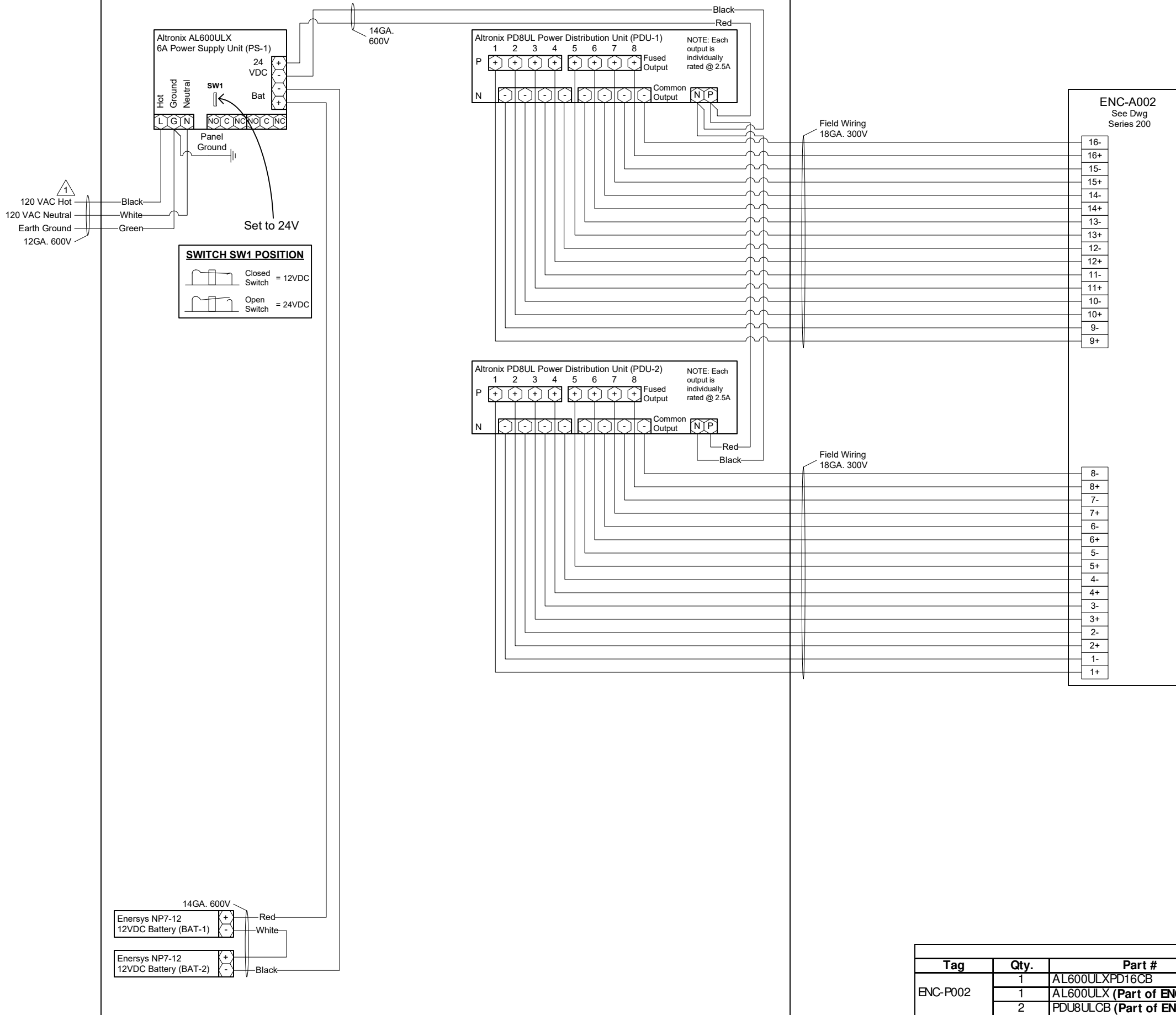
Bill of Material				
Tag	Qty.	Part #	Mfg.	Description
ENC-P001	1	AL600ULXPD16CB	Altronix	Expandable Access/Fire Power Panel
	1	AL600ULX (Part of ENC-P001)	Altronix	120VAC/12/24VDC 6A Power Supply (PS-1)
	2	PDU8ULCB (Part of ENC-P001)	Altronix	24VAC/DC/12VDC @ 2.5A Power Distributor (PDU-1,2)
BAT-1,2	2	NP7-12	Energys	7AmpHr 12VDC Battery

TITLE:	Dane County - Lyman F. Anderson A & C Center - Card Access System - DC PN 317039
DESCRIPTION:	ENC-P001 - Access Control Power Distribution Panel - Termination Detail & BOM
JOB #:	22181400010
DATE:	03/13/2018
APPROVED BY:	Brett Shinkle
FILENAME:	Dane Co - Fen Oak - 2018_06_15 - Access Dwg.vsd
SCALE:	NTS
DWG PAGE #:	P01
BY:	SEF
DATE:	03/30/18
DESCRIPTION:	Engr Comments, Release for Electrical Bid
REV.	1

**CBRE|ESI**  
[www.thinkESI.com](http://www.thinkESI.com)  
 1-800-522-0372  
 Copyright 2003-2018 ESI. All rights reserved. Do not copy or duplicate without written permission.

# ENC-P002 – Power Distribution Panel

Located: Second Floor, Room 239. (See Owner Engineer for Exact Location)



NOTE: Installer to Provide Main Disconnect and Branch Circuit Protection. 120 VAC to be supplied from a dedicated 20 Amp Branch Circuit, with separate Hot, Neutral and Green Equipment Grounding Conductor. Terminate Equipment Grounding Conductor at Branch Circuit Distribution Panel, to Panel Enclosure or Grounding Conductor by Approved Means.

Bill of Material				
Tag	Qty.	Part #	Mfg.	Description
ENC-P002	1	AL600ULXPD16CB	Altronix	Expandable Access/Fire Power Panel
	1	AL600ULX (Part of ENC-P002)	Altronix	120VAC/12/24VDC 6A Power Supply (PS-1)
	2	PDU8ULCB (Part of ENC-P002)	Altronix	24VAC/DC/12VDC @ 2.5A Power Distributor (PDU-1,2)
BAT-1,2	2	NP7-12	Enersys	7AmpHr 12VDC Battery

TITLE:	Dane County - Lyman F. Anderson A & C Center - Card Access System - DC PN 317039
DESCRIPTION:	ENC-P002 - Access Control Power Distribution Panel - Termination Detail & BOM
JOB #:	22181400010
DATE:	03/13/2018
DRAWN BY:	Steve Ferns
APPROVED BY:	Brett Shinkle
SCALE:	NTS
FILENAME:	Dane Co - Fen Oak - 2018_06_15 - Access Dwg.vsd
DWG PAGE #:	P02
BY:	SEF
DATE:	03/30/18
DESCRIPTION:	Engr Comments, Release for Electrical Bid
REV.	1

**CBRE|ESI**  
[www.thinkESI.com](http://www.thinkESI.com)  
 Copyright 2003-2018 ESI. All rights reserved. Do not copy or duplicate without written permission.  
 1-800-522-0372

ACCESS CONTROL DOOR SCHEDULE																	
Door Number	Door Name	Entering From:	Door Config.	Use (Exterior/Interior)	Fail Mode (Safe/Secure)	Strike (Elec / Mag Lock)	RDR New	RDR Demo	DPS New	RTE New	STK New	Emergency Pull Station PS	HDPC	Misc. Auxiliary Controls:	NC, Trunk & Controller Address		Power Panel #:
															SNC:	Module	
<b>ENC-A001 (First Floor)</b>																	
101A	Front Door West	Outside	Double	Exterior	Secured	Electric Strike	-	-	X	-	-	-	-	Outside front double doors lock on timer control; Demo mag lock & repair holes / finish; add rim strike. (Work by others)	ENC-A001	SNC-01	ENC-P001
101B	Front Door East	Outside	Double	Exterior	Secured	Electric Strike	X	X	X	X	-	-	X	Outside front double doors lock on timer control; Install one RTE to serve both doors; Three handicap switches (Interior, Vestibule, Exterior) are existing and shall remain; Verify there are two sets of contacts in each switch, if there are not two sets of contacts, to be provided by owner; Run wire (2-conductor, 18 gauge) from interior handicap switch to 1st floor control panel. (Work by Others)	ENC-A001	SNC-01	ENC-P001
112A	Back Door	Vestibule 112	Single	Exterior	Secured	Electric Strike	X	X	X	X	X	-	-		ENC-A001	EXP-B	ENC-P001
114A	1st Floor Storage	Corridor 122	Single	Interior	Secured	Electric Strike	X	-	X	X	X	-	-		ENC-A001	EXP-B	ENC-P001
119A	UWEX Rear	Corridor 122	Single	Interior	Secured	Electric Strike	X	-	X	X	X	-	-		ENC-A001	EXP-C	ENC-P001
121B	Room 121 West	Corridor 122	Single	Interior	Secured	Electric Strike	X	-	X	X	X	-	-		ENC-A001	EXP-C	ENC-P001
121C	Room 121 East	Corridor 122	Single	Interior	Secured	Electric Strike	X	-	X	X	X	-	-		ENC-A001	EXP-D	ENC-P001
138A	UWEX Main	Corridor 102	Single	Interior	Secured	Electric Strike	X	-	X	X	X	-	-		ENC-A001	EXP-D	ENC-P001
140A	Conference Room C	Corridor 142	Single	Interior	Secured	Electric Strike	X	-	X	X	X	-	-		ENC-A001	EXP-E	ENC-P001
145A	Class Room A	Corridor 142	Single	Interior	Secured	Electric Strike	X	-	X	X	X	-	-		ENC-A001	EXP-E	ENC-P001
146B	Class Room B	Corridor 142	Single	Interior	Secured	Electric Strike	X	-	X	X	X	-	-		ENC-A001	EXP-F	ENC-P001
144A	Kitchen	Corridor 142	Single	Interior	Secured	Electric Strike	X	-	X	X	X	-	-		ENC-A001	EXP-F	ENC-P001
116A	First Floor Stair Entry	Corridor 111	Single	Interior	Secured	Electric Strike	X	-	X	X	X	-	-		ENC-A001	EXP-G	ENC-P002
<b>ENC-A002 (Second Floor)</b>																	
208A	LWRD Main	Lobby 201	Single	Interior	Secured	Electric Strike	X	-	X	X	X	-	-		ENC-A002	SNC-02	ENC-P002
210A	Monona Conference Room	Corridor 219	Single	Interior	Secured	Electric Strike	X	-	X	X	X	-	-		ENC-A002	SNC-02	ENC-P002
218A	LWRD Fire Door	Corridor 219	Single	Interior	Unsecured	Existing Mag Lock	X	-	X	X	X	X	X		ENC-A002	EXP-B	ENC-P002
224B	Mendota Conference Room	Corridor 219	Single	Interior	Secured	Electric Strike	X	-	X	X	X	-	-		ENC-A002	EXP-C	ENC-P002
226A	Kegonsa Conference Room	Lobby 201	Single	Interior	Secured	Electric Strike	X	-	X	X	X	-	-		ENC-A002	EXP-C	ENC-P002
227A	LWRD North	Lobby 201	Single	Interior	Secured	Electric Strike	X	-	X	X	X	-	-		ENC-A002	EXP-D	ENC-P002
228A	FSA West	Coffee Rm 231 & Open Office 228	Single	Interior	Secured	Electric Strike	X (2)	-	X	-	X	-	-	Access Required in both directions	ENC-A002	EXP-D	ENC-P002
234A	FSA Main	FSA Entry Room 234	Single	Interior	Secured	Electric Strike	X	-	X	X	X	-	-		ENC-A002	EXP-E	ENC-P002
235B	FSA Conference Room	FSA Entry Room 234	Single	Interior	Secured	Electric Strike	X	-	X	X	X	-	-		ENC-A002	EXP-F	ENC-P001

KEY for S01 - Access Control Schedule			
5	Number =	Location as detailed on floor plans	DPS New = Provide new door position switch
	RDR New =	Provide new card reader	RTE New = Provide new request to exit device
	RDR Demo =	Demo existing card reader	STK New = Provide new electric door strike
5	PS =	Emergency Pull Station	HDPC = Interface with existing handicap buttons and door openers

TITLE: Dane County - Lyman F. Anderson A & C Center - Card Access System - DC PN 317039

DESCRIPTION: Access Control Door Schedule

APPROVED BY: Brett Shinkle

DATE: 03/13/2018

Drawn By: Steve Ferns

SCALE: NTS

FILENAME: Dane Co - Fen Oak - 2018\_06\_15 - Access Dwg. vsd

Job #: 22181400010

DWG PAGE #: S01

DATE: 06/14/18

DATE: 05/02/18

DATE: 03/30/18

REV. 5

REV. 3

REV. 1

DESCRIPTION: Addendum No. 1

DESCRIPTION: Modified A Door Acc Equip Loc, Rel to Bid

DESCRIPTION: Engr Comments, Rel. for Electrical Bid

1-800-522-0372

www.thinkESI.com

Copyright 2009-2018 ESI. All rights reserved. Do not copy or duplicate without written permission.

**CBRE|ESI**

**Work By Owner**

Door Number	Door Name	Work by Owner
101A	Front Door West	No work
101B	Front Door East	No work
112A	Back Door	No work
114A	1st Floor Storage	No work
116A	1st Floor Stairway Access	No work
119A	UWEX Rear	Furnish & install new lever handle
<b>121B</b>	Room 121 West	<b>Furnish &amp; install closer</b>
121C	Room 121 East	Furnish & install closer; demo electronic key pad
138A	UWEX Main	Furnish & install new lever handle
140A	Conference Room C	Furnish & install closer
145A	Class Room A	Furnish & install closer
146B	Class Room B	Furnish & install closer
144A	Kitchen	Furnish & install closer
208A	LWRD Main	Furnish & install new lever handle
210A	Monona Conference Room	Furnish & install closer
218A	LWRD Fire Door	Need to get Madison Fire Inspector's direction & approval before determining how egress door is controlled & alarmed
224B	Mendota Conference Room	Furnish & install closer
226A	Kegonsa Conference Room	Furnish & install closer
227A	LWRD North	Furnish & install new lever handle
<b>228A</b>	FSA West	<b>Furnish &amp; install new lever handle &amp; lever latch? Lance to determine need</b>
234A	FSA Main	Furnish & install new lever handle
<b>235B</b>	FSA Conference Room	<b>Furnish &amp; install new lever handle</b>

TITLE:	Dane County - Lyman F. Anderson A & C Center - Card Access System - DC PN 317039
DESCRIPTION:	Work by Owner
JOB #:	22181400010
DATE:	03/13/2018
APPROVED BY:	Brett Shinkle
FILENAME:	Dane Co - Fen Oak - 2018_06_15 - Access Dwg.vsd
SCALE:	NTS
DRAWN BY:	Steve Ferns
DWG PAGE #:	Owner Work
DATE	BY
06/14/18	SEF
05/02/18	SEF
04/25/18	SEF
DESCRIPTION	
Addendum No. 1	
Modified A Door Acc Equip Loc, Rel to Bid	
Owner Provided Info, Release for Elect. Bid	
REV.	
5	
3	
2	