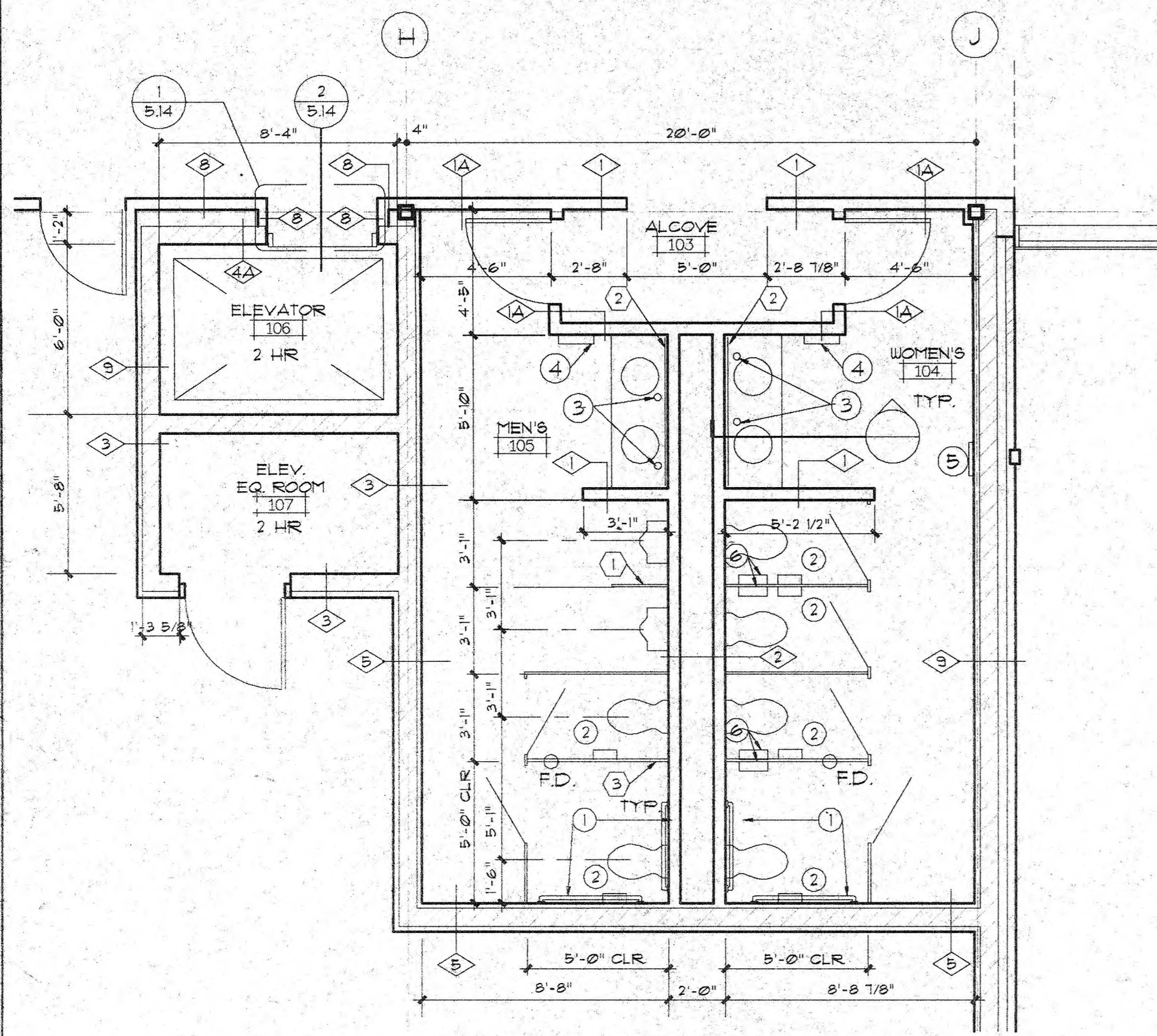
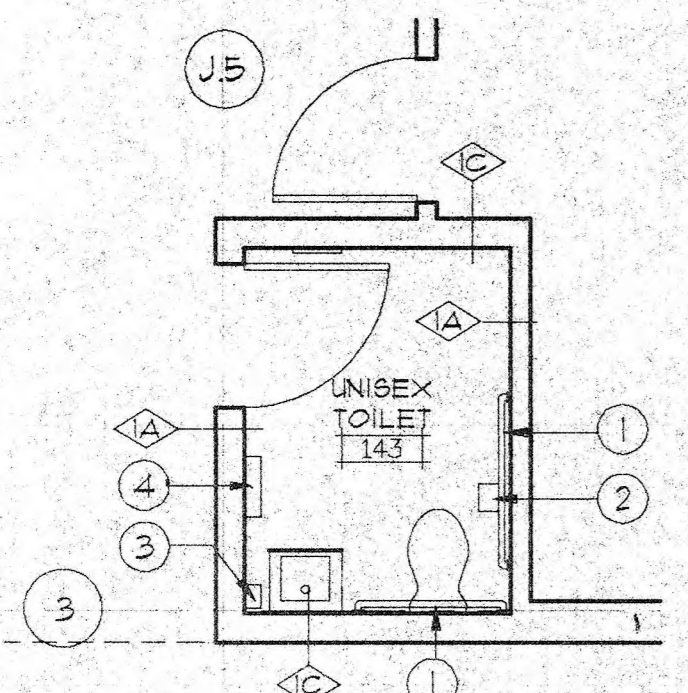


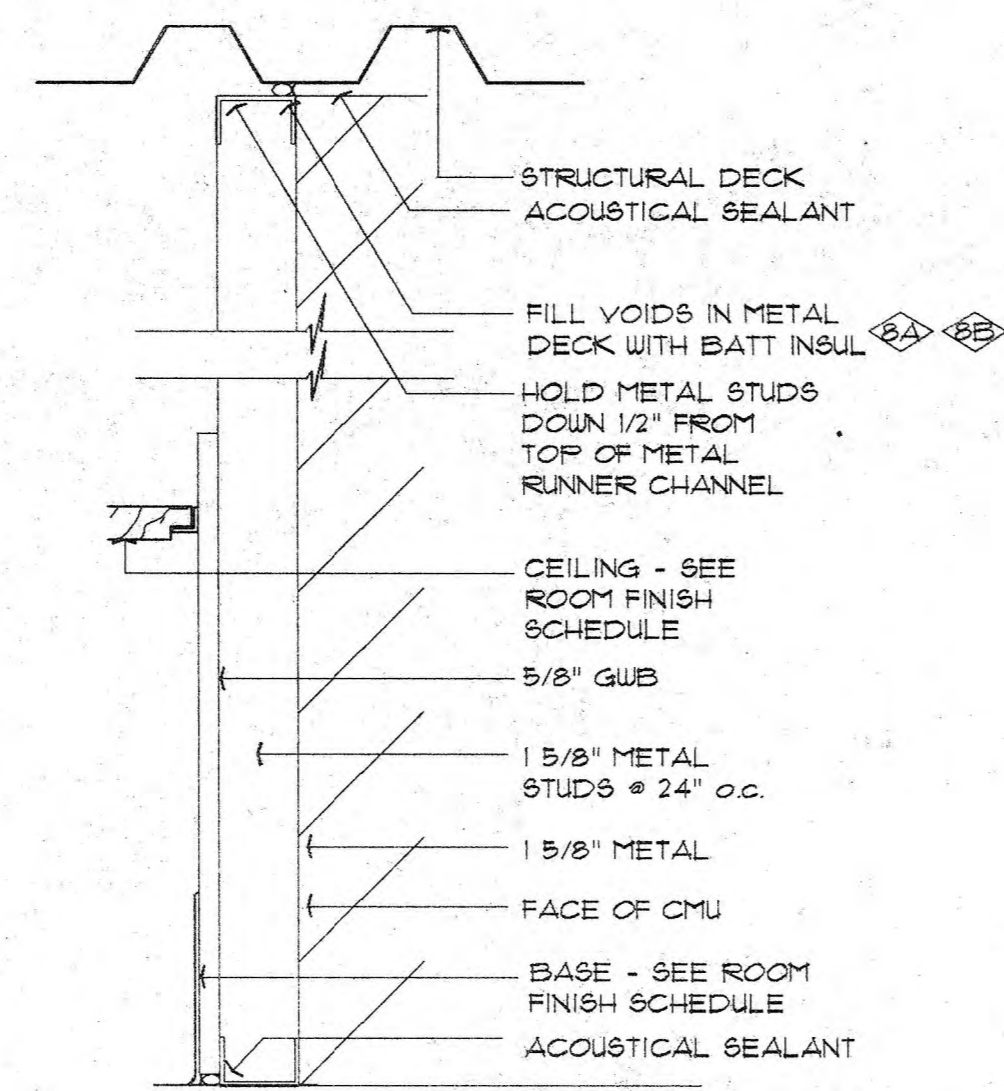
Consultant



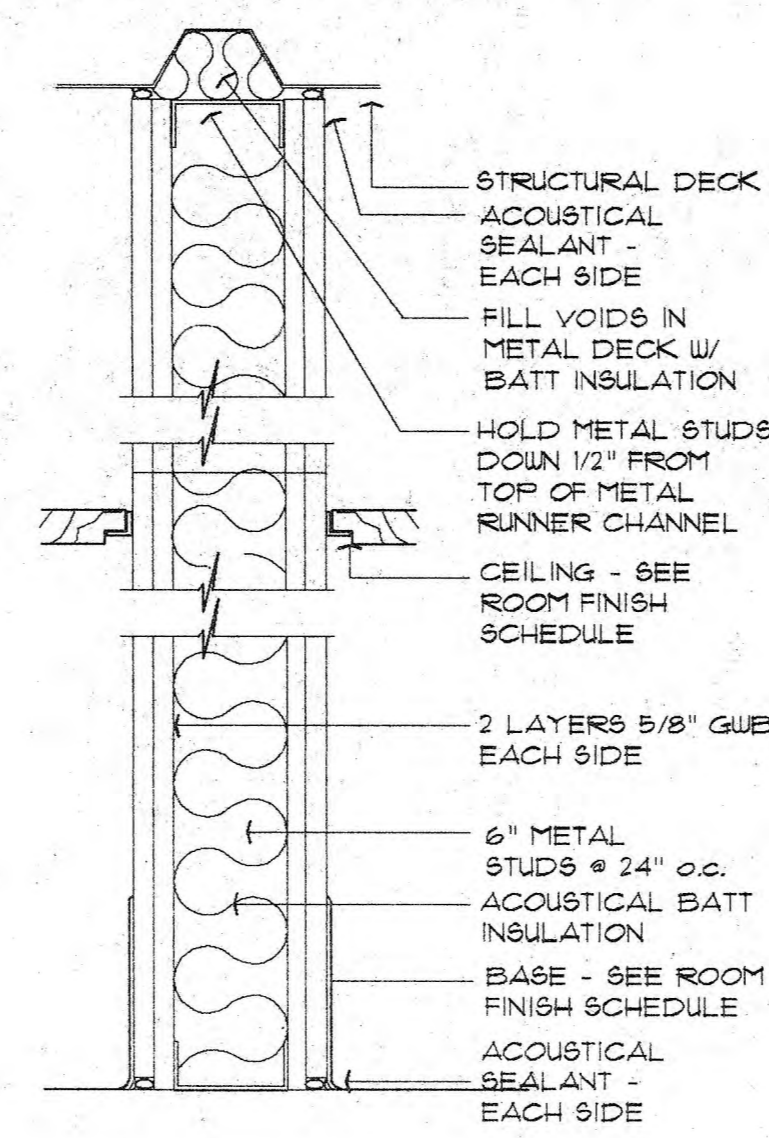
1 ENLARGED TOILET PLAN
5.04 1/4" = 1'-0" SIMILAR AT BOTH FLOORS



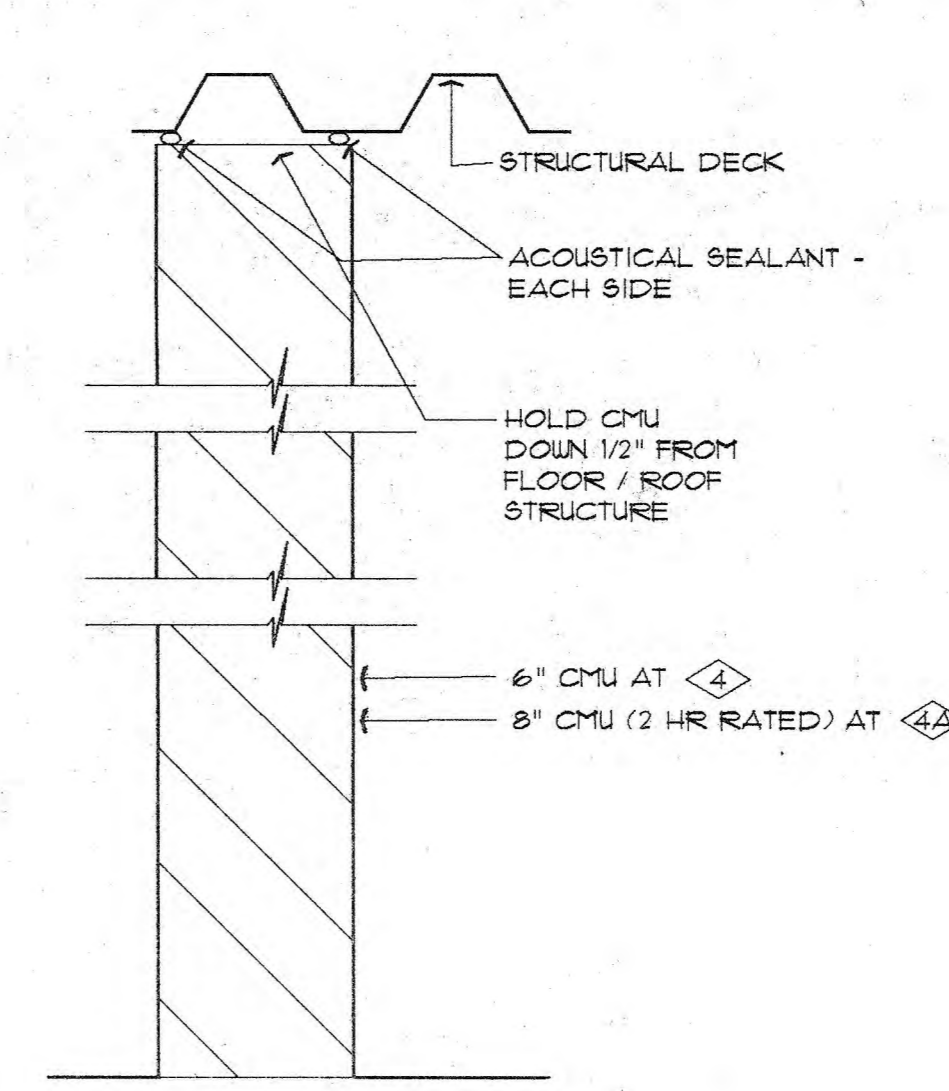
2 ENLARGED TOILET PLAN
5.04 1/4" = 1'-0"



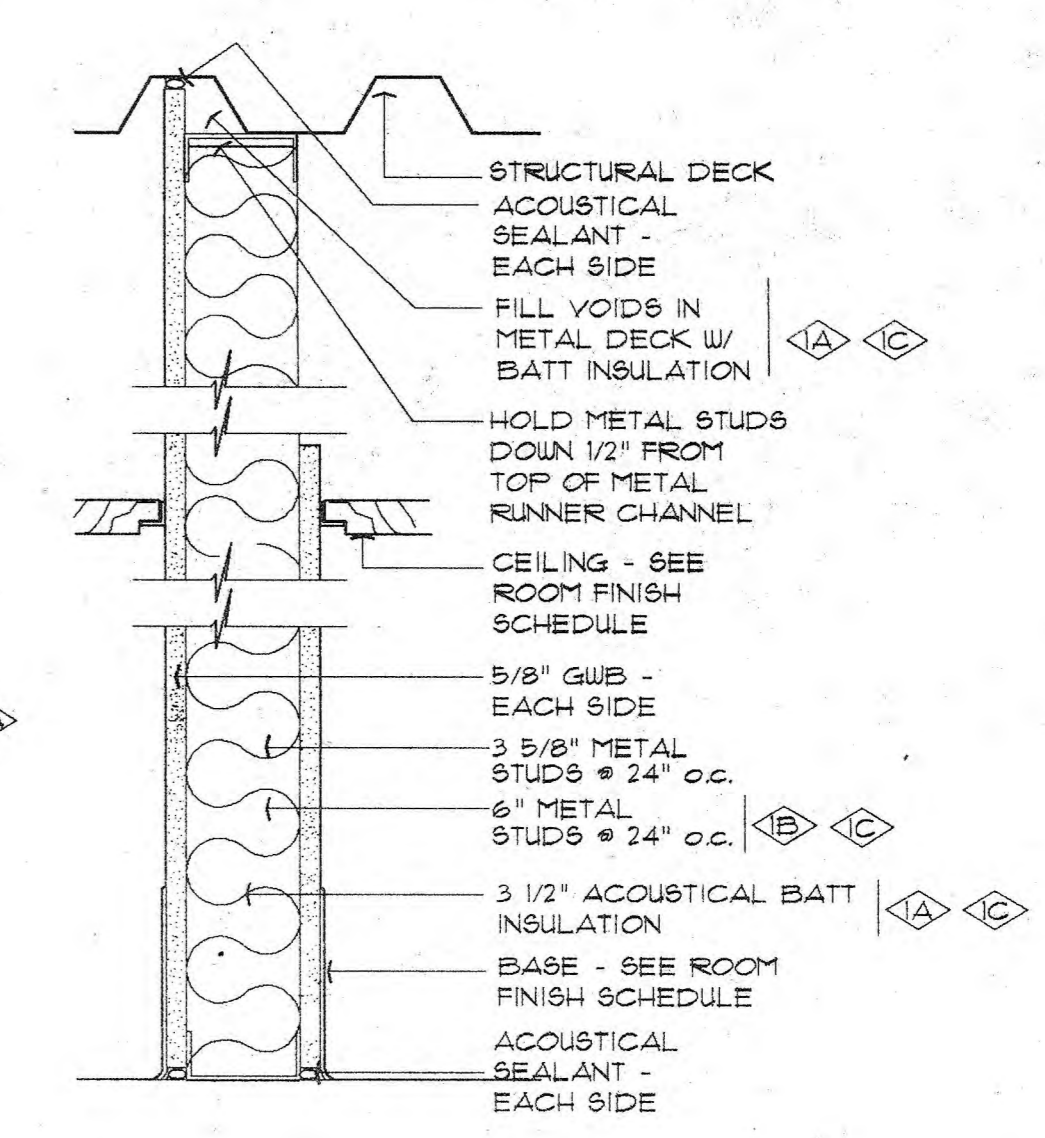
PARTITION TYPE 3
NOT TO SCALE



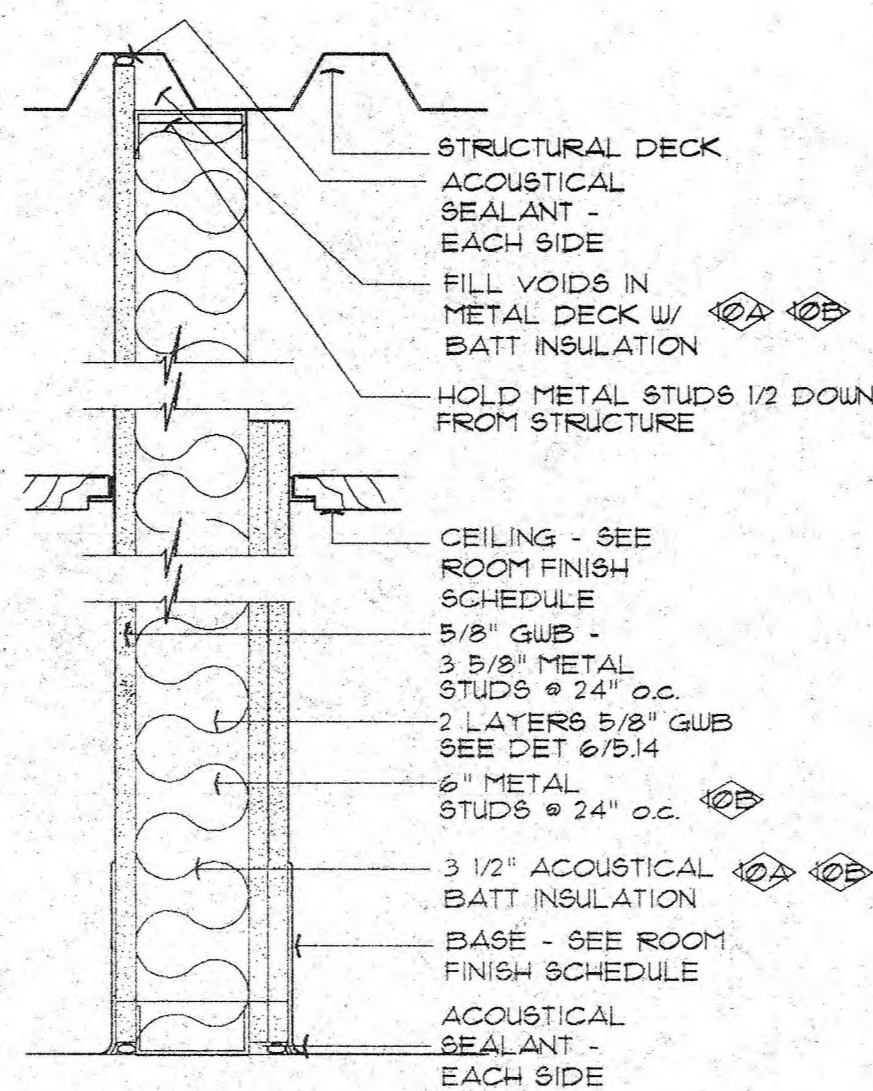
PARTITION TYPE 7
NOT TO SCALE



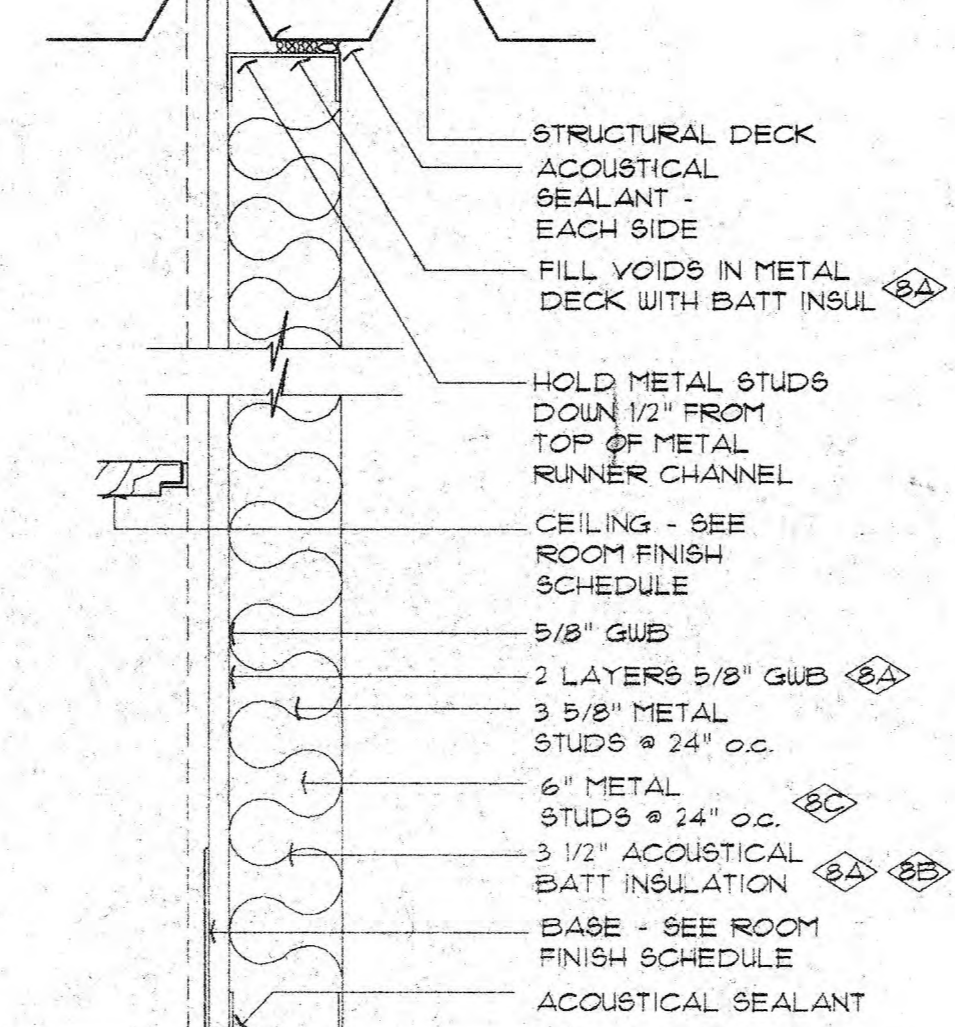
PARTITION TYPE 4, 4A
NOT TO SCALE



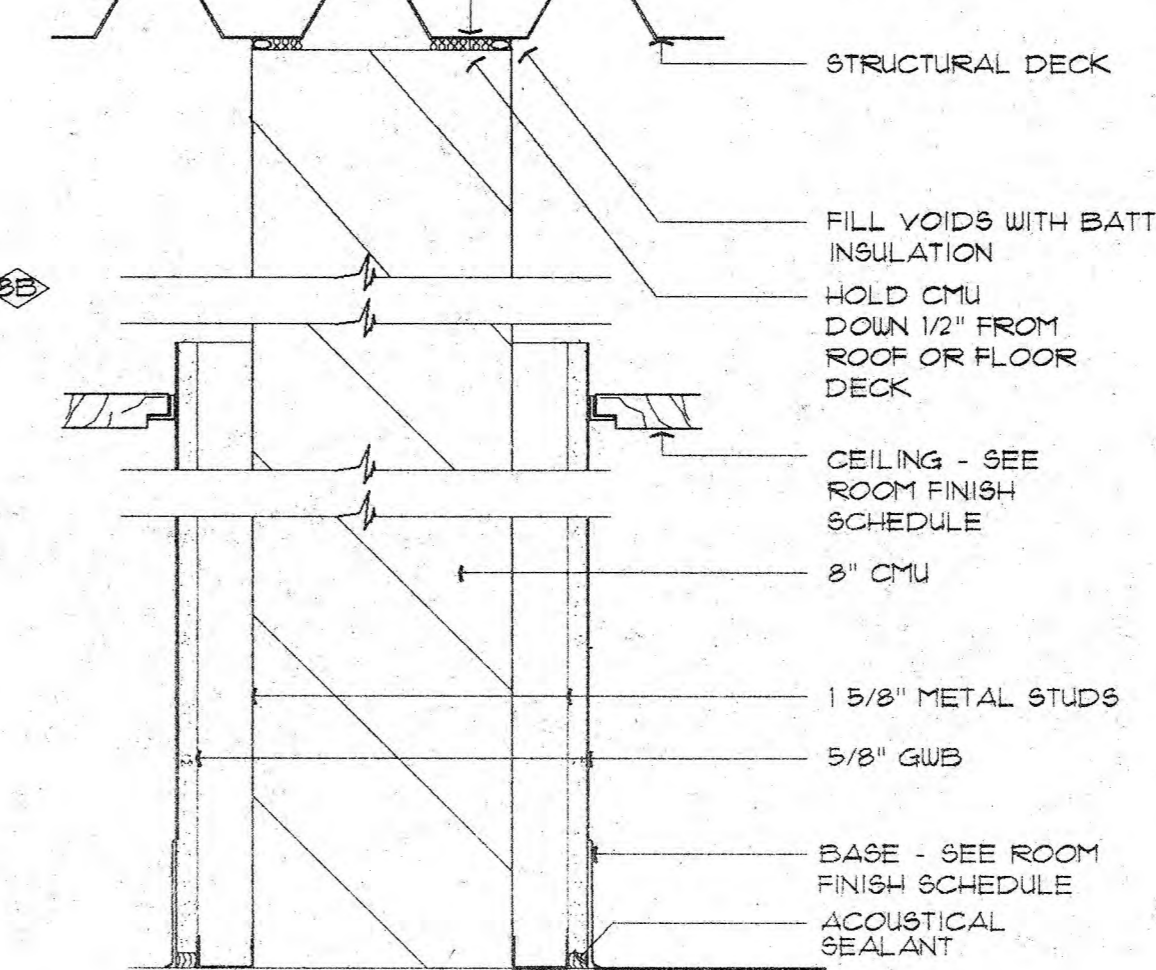
PARTITION TYPE 1, 1A, 1B
NOT TO SCALE



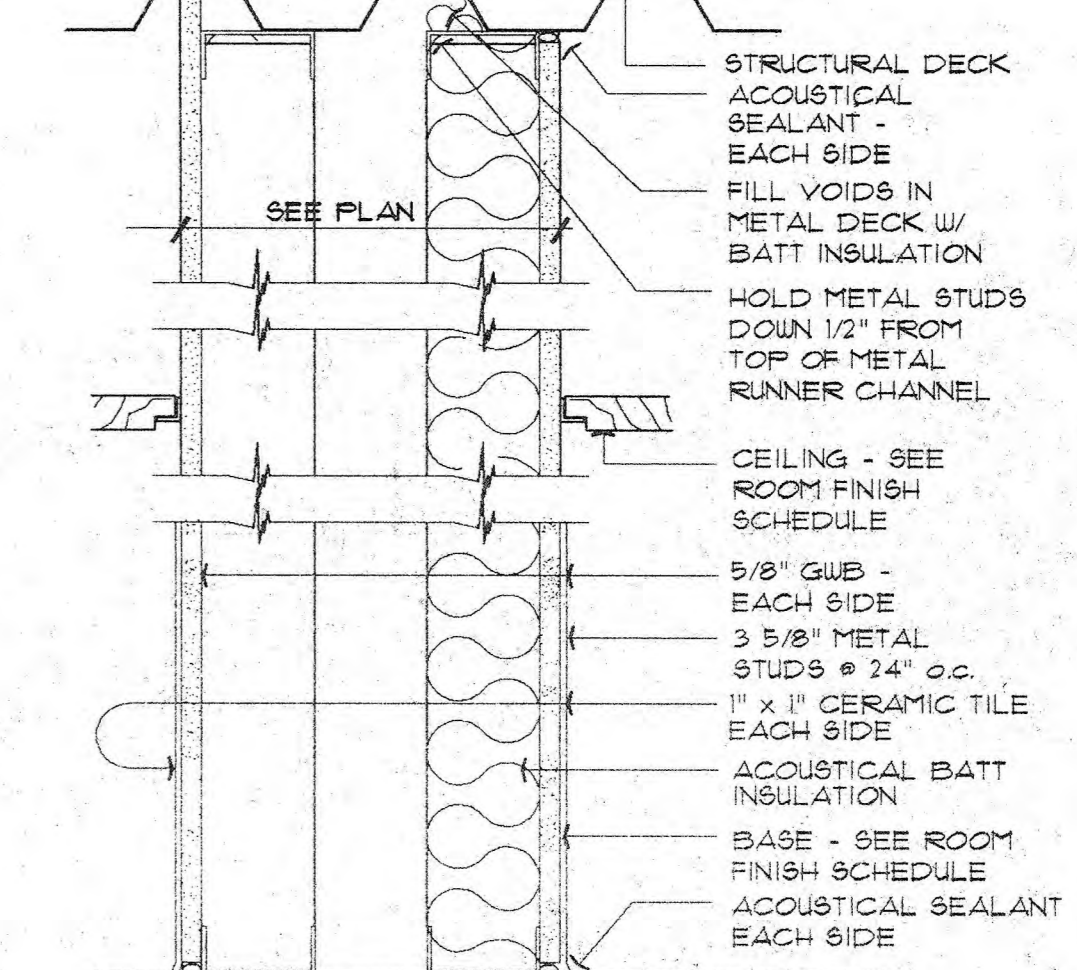
PARTITION TYPE 10, 10A, 10B
NOT TO SCALE



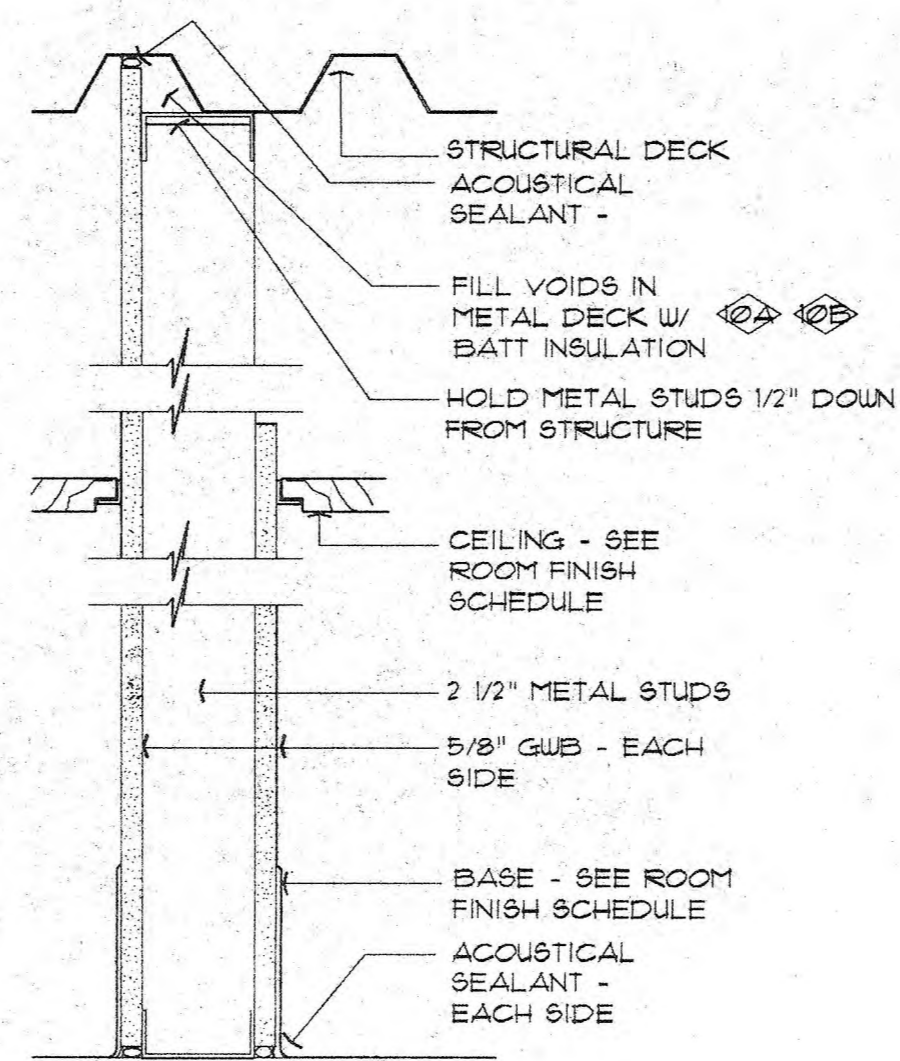
PARTITION TYPE 8, 8A
NOT TO SCALE



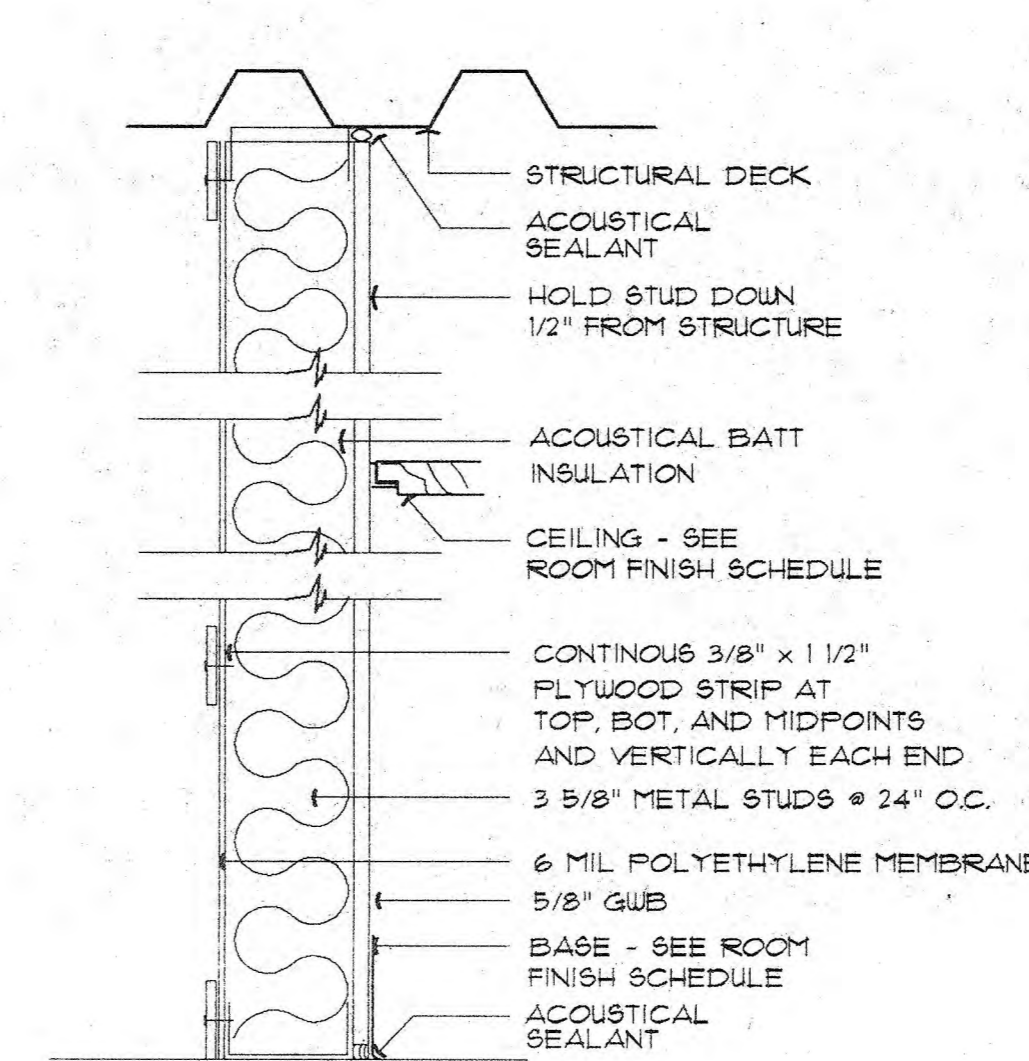
PARTITION TYPE 5
NOT TO SCALE



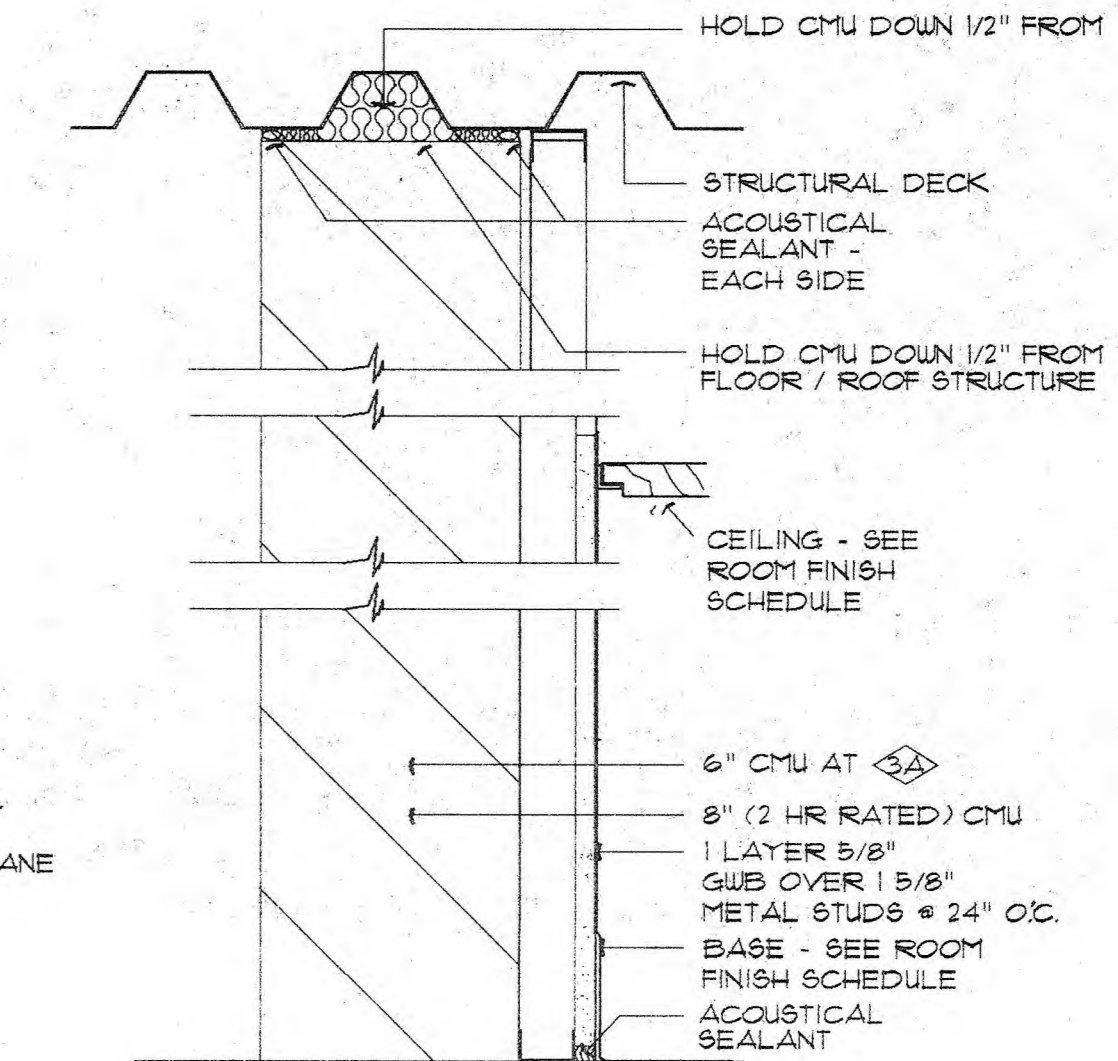
PARTITION TYPE 2
NOT TO SCALE



PARTITION TYPE 11
NOT TO SCALE



PARTITION TYPE 6
NOT TO SCALE



PARTITION TYPE 3, 3A
NOT TO SCALE

SPECIFIC NOTES

- 1 URINAL SCREEN
- 2 MIRROR BY OTHER CONTRACTOR. FULL WIDTH OF COUNTERTOP. HEIGHT FROM TOP OF BACKSPASH TO CEILING.
- 3 TOILET PARTITIONS. SEE DETAIL FOR CEILING MOUNTED TOILET PARTITION SUPPORT DETAIL.

KEY TO TOILET ACCESSORIES

- 1 GRAB BARS
- 2 TOILET PAPER DISPENSER
- 3 SOAP DISPENSER
- 4 PAPER TOWEL DISPENSER
- 5 SANITARY NAPKIN DISPENSER
- 6 SANITARY NAPKIN DISPOSAL

Date	Issuance/Revisions	Symbols
12/18/95	ISSUED FOR BIDDING	
12/11/95	ISSUED FOR OWNER APPROVAL	
11/20/95	ISSUED FOR OWNER APPROVAL	
10/3/95	ISSUED FOR D.D. APPROVAL	

DANE COUNTY
EXTENSION AND
AGRICULTURE CENTER

WORLD DAIRY CENTER
MADISON, WISCONSIN

Partition Types and
Enlarged Plans

Consultant:

KEY TO CEILING SYMBOLS

- 8'-6" CEILING HEIGHT ABOVE FINISH FLOOR
- 2x2 LAY-IN PANEL CEILING
- 2x4 LAY-IN PANEL CEILING
- GUB CEILING
- LIGHT FIXTURE (SEE ELECTRICAL DRAWINGS)

GENERAL NOTES

1. REFER TO ROOM FINISH SCHEDULE FOR CEILING TYPES AND CEILING HEIGHTS AT ROOMS WHICH ARE NOT INDICATED ON THESE DRAWINGS.
2. REFER TO ELECTRICAL DRAWINGS FOR LOCATIONS OF LIGHT FIXTURES AND OTHER ELECTRICAL EQUIPMENT NOT SHOWN ON THESE DRAWINGS. REFER TO MECHANICAL DRAWINGS FOR LOCATIONS OF DIFFUSERS AND OTHER MECHANICAL EQUIPMENT NOT SHOWN ON THESE DRAWINGS.
3. SEE MILLWORK ELEVATIONS ON DRAWING 510 FOR SIZE AND LOCATION OF GUB SOFFITS AT CABINETS.

SPECIFIC NOTES

- 1) 2' x 2' CEILING ACCESS DOOR. VERIFY LOCATION WITH CEILING DOOR CONTRACTOR.
- 2) 1'-6" x 1'-6" CEILING ACCESS DOOR. VERIFY LOCATION WITH CEILING DOOR CONTRACTOR.
- 3) SUSPENDED GUB SOFFIT.

Date	Issuance/Revisions	Symbols
12/18/95	ISSUED FOR BIDDING	
12/11/95	ISSUED FOR OWNER APPROVAL	
12/9/95	ISSUED FOR D.D. APPROVAL	

**DANE COUNTY
EXTENSION AND
AGRICULTURE CENTER**

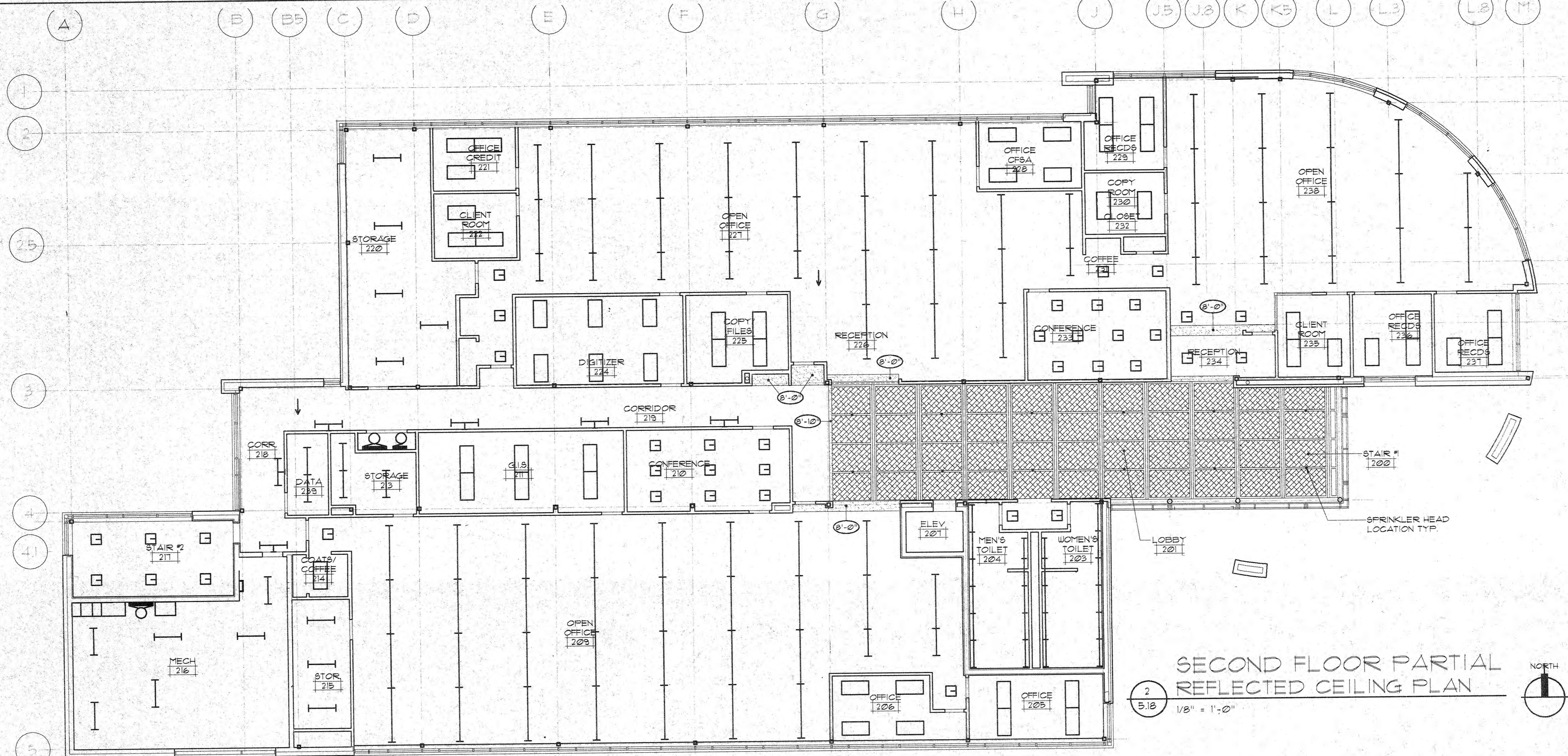
FEN OAK COURT
MADISON, WISCONSIN

REFLECTED CEILING PLANS

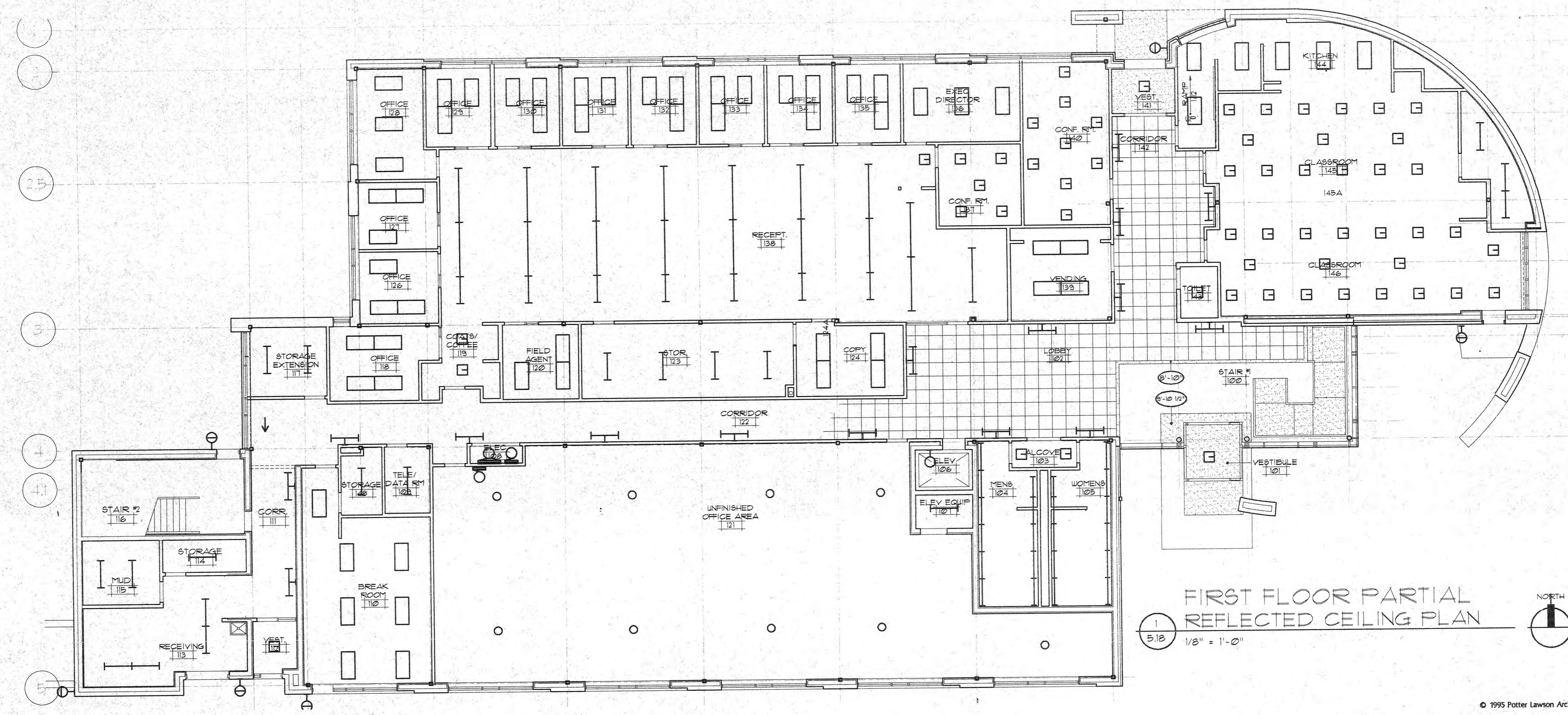
Project Number: 9500602	Sheet No. 5.18
Drawn By: CAO	

© 1995 Potter Lawson Architects

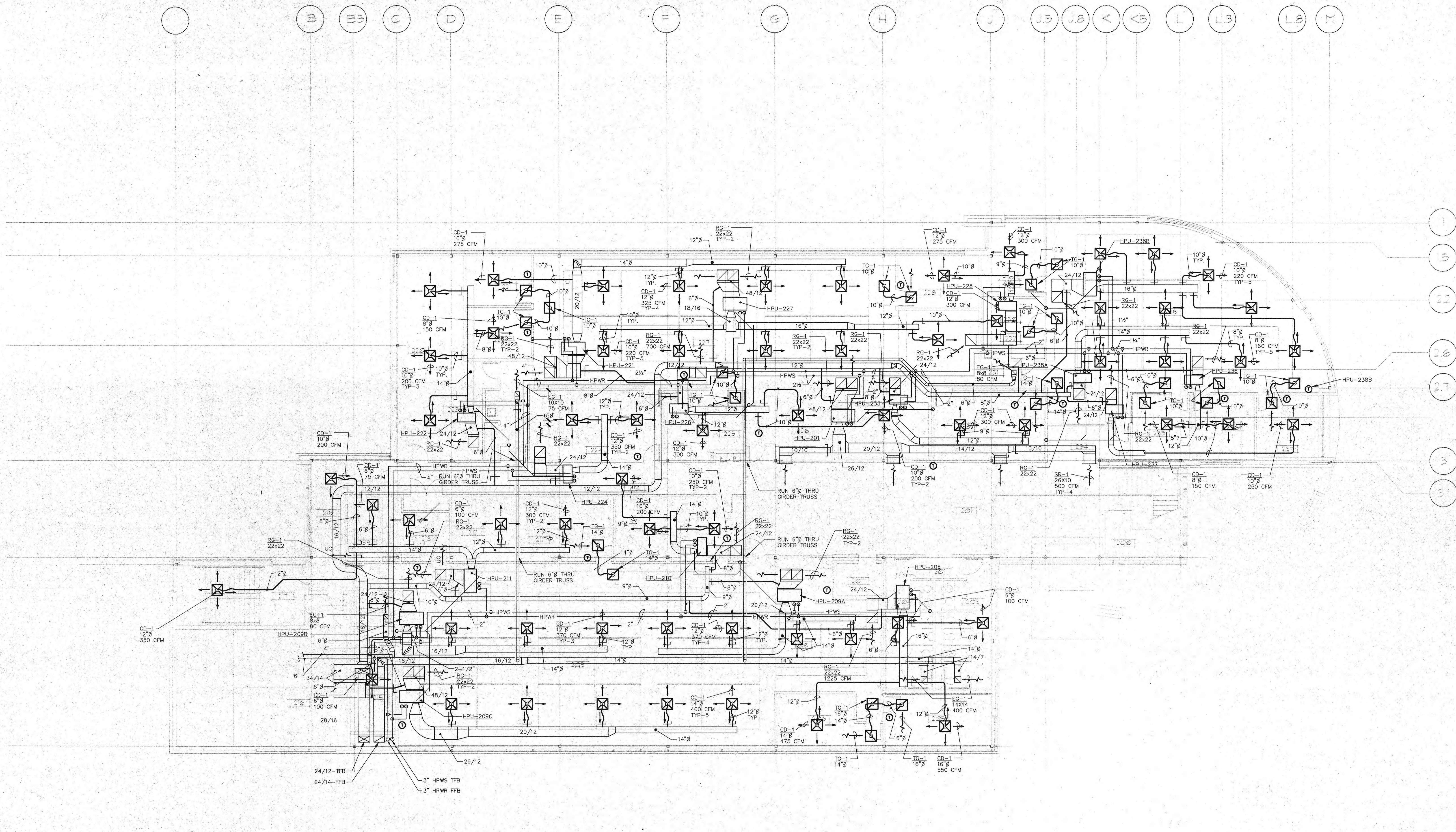
PLOTTED: 12/11/95



**SECOND FLOOR PARTIAL
REFLECTED CEILING PLAN**
2
5/18
1/8" = 1'-0"



**FIRST FLOOR PARTIAL
REFLECTED CEILING PLAN**
1
5/18
1/8" = 1'-0"



1 SECOND FLOOR PLAN - HVAC
8.02 1/8" = 1'-0"



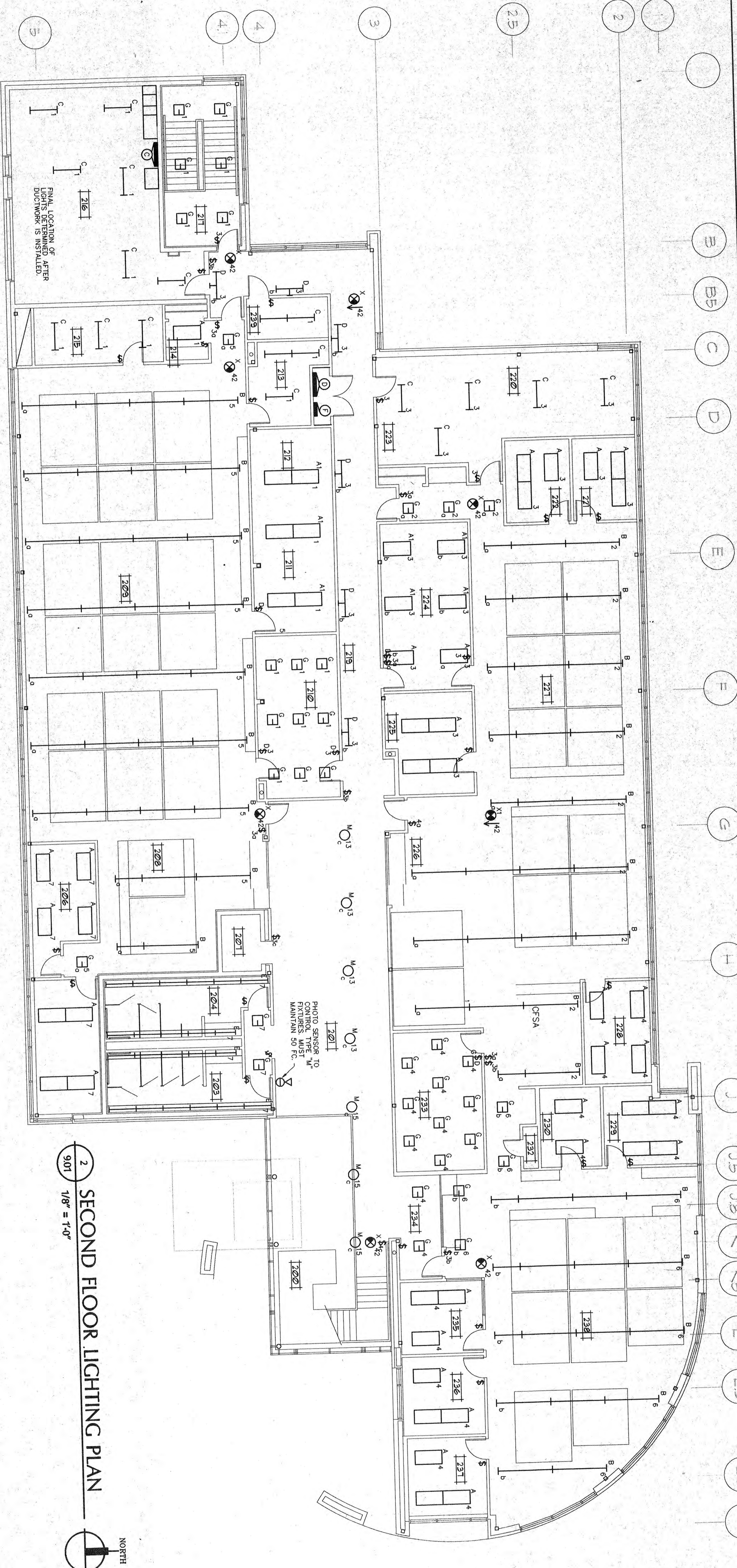
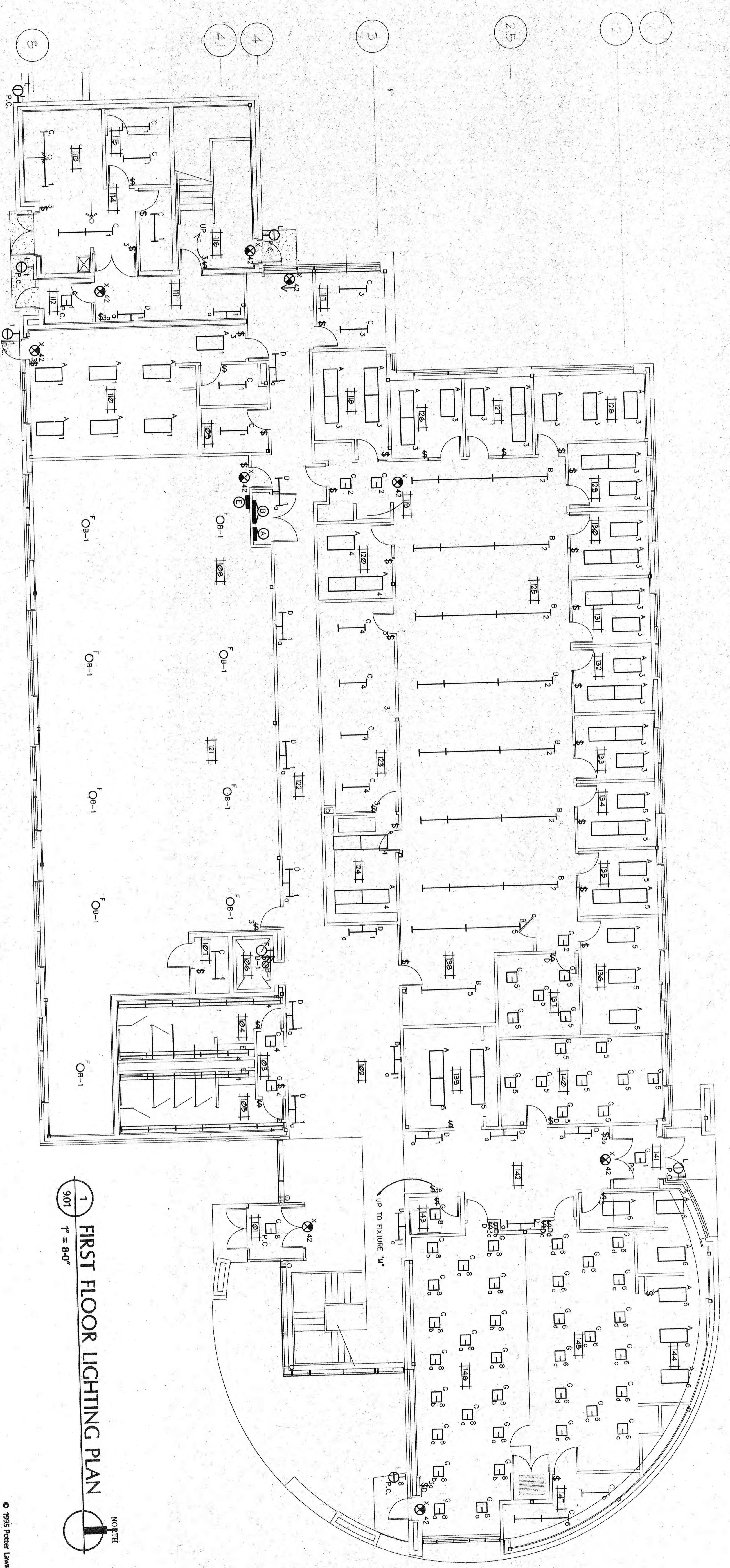
12/18/95	ISSUED FOR BIDDING	
Date	Issuance/Revisions	Symbols

DANE COUNTY
EXTENSION AND
AGRICULTURE CENTER

WORLD DAIRY CENTER
MADISON, WISCONSIN

Drawing Title
SECOND FLOOR PLAN - HVAC

Project Number: 95006.00	Sheet No. 8.02
Drawn By: TDM/DMG	



ELECTRICAL GENERAL NOTES:	
NO.	DESCRIPTION
1	FIRST FLOOR LIGHTING TO BE SERVED BY PANEL.
2	ALL SECOND FLOOR LIGHTING TO BE SERVED BY PANEL.
3	UNLESS NOTED OTHERWISE.
4	UNLESS NOTED OTHERWISE.

Potter Lawson
 Architects Engineers Interiors
 Consultant

<p>12/18/95 ISSUED FOR BIDDING 11/17/95 ISSUED FOR OWNER REVIEW 10/9/95 ISSUED FOR DESIGN DEVELOPMENT APPROVAL</p>	<p>Date</p>	<p>Issuance/Revisions</p>	<p>Symbols</p>
<p>DANE COUNTY EXTENSION AND AGRICULTURE CENTER</p>			
<p>FEN OAK COURT MADISON, WISCONSIN</p>			
<p>Drawing Title LIGHTING FLOOR PLANS</p>			
<p>Project Number 4500602</p>	<p>Sheet No. 9.01</p>	<p>9.01</p>	
<p>© 1995 Potter Lawson Architects BC/VHB</p>			

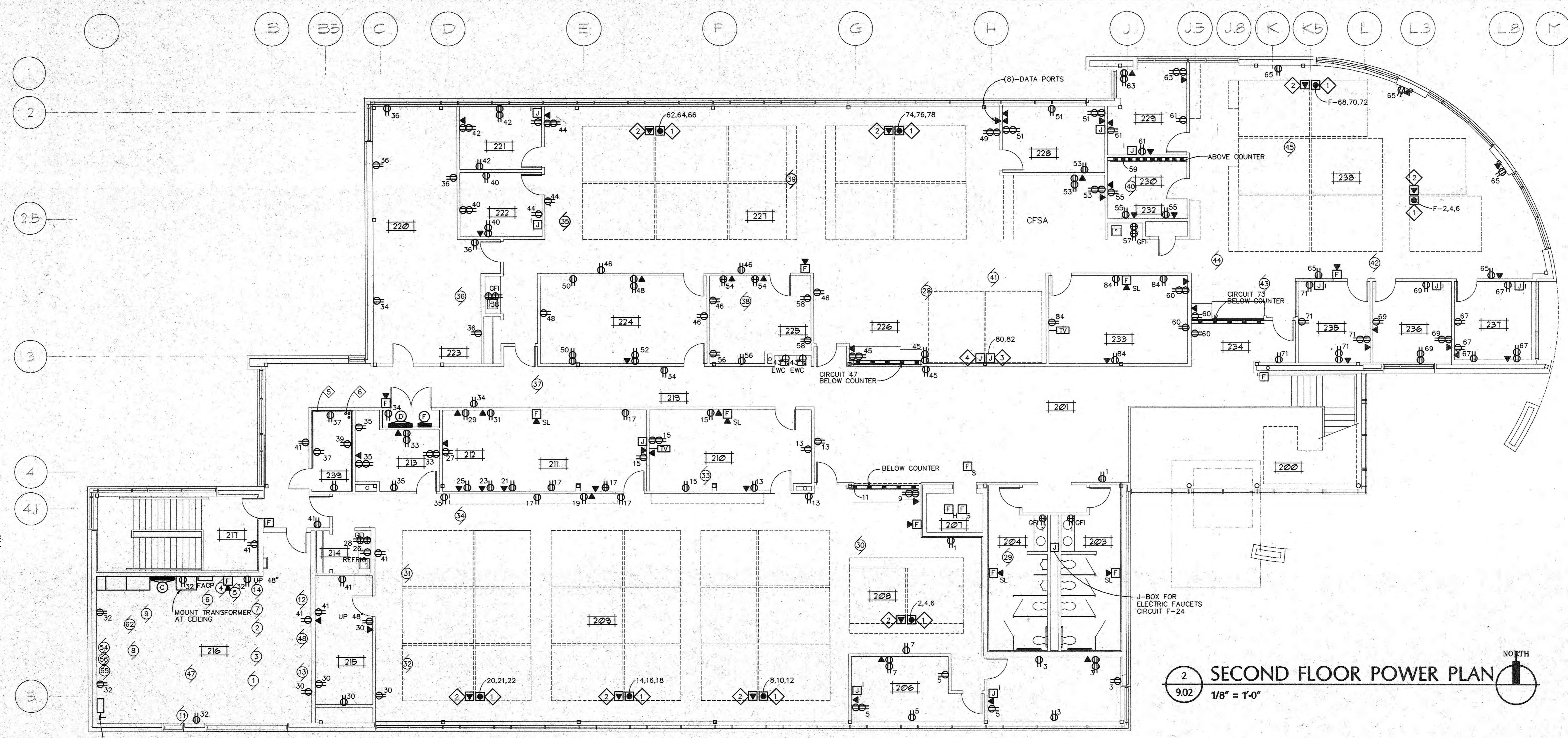
Consultant:

ELECTRICAL GENERAL NOTES:

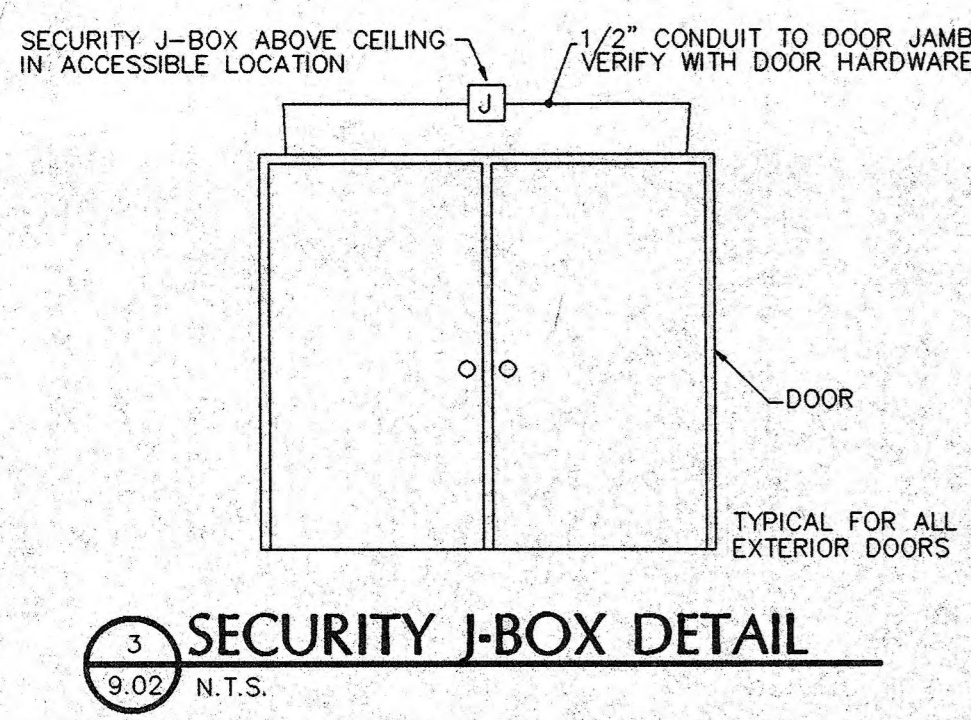
- | NO. | DESCRIPTION |
|-----|---|
| 1 | ALL CIRCUITS ON FIRST FLOOR ARE SERVED FROM PANEL "B" UNLESS OTHERWISE NOTED. |
| 2 | ALL CIRCUITS ON FIRST FLOOR ARE SERVED FROM PANEL "D" UNLESS OTHERWISE NOTED. |
| 3 | JUNCTION BOX WITH 3/4" CONDUIT STUB UP TO ACCESSIBLE CEILING SPACE FOR FUTURE T.V. CABLE HOOK-UP. |
| 4 | ELECTRICAL CONTRACTOR TO FASTEN ALL CABLES TO CEILING STRUCTURE AS PER NEC. |

ELECTRICAL NOTES:

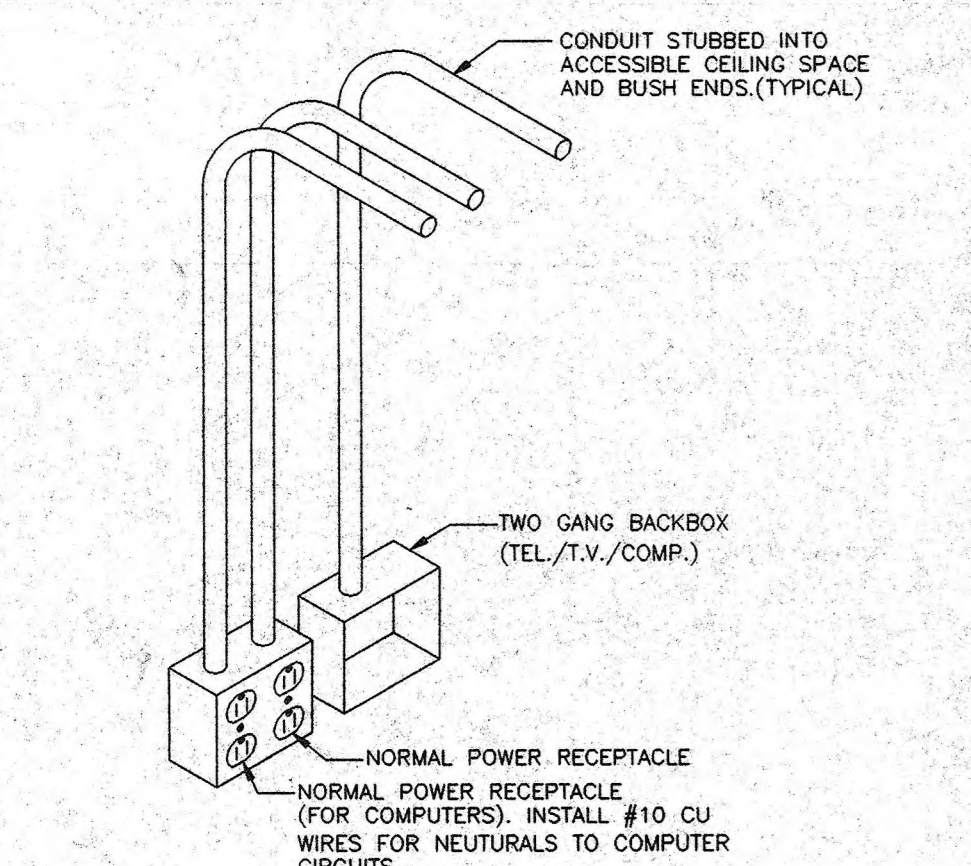
- | NO. | DESCRIPTION |
|-----|--|
| 1 | FLUSH FLOOR POWER FEED BOX TO ACCEPT 8 WIRE SYSTEM FURNITURE CABLE. |
| 2 | SEMI-FLUSH FLOOR BOX FOR VOICE AND DATA WIRING. PROVIDE (2)-CAT 5 DATA CABLES PER WORK STATION AND (4)-CAT 5 DATA CABLES FOR FUTURE. |
| 3 | WALL JUNCTION BOX TO ACCEPT 8 WIRE SYSTEM FURNITURE CABLE. |
| 4 | WALL JUNCTION BOX FOR VOICE AND DATA WIRING. PROVIDE 4' X 8' X 3/4" PLYWOOD, PAINTED WITH 2 COATS OF GREY FIRE RESISTANT PAINT, FOR TELEPHONE AND DATA SERVICE. ON THREE WALLS. PROVIDE (3)-4" SLEEVES, STUB 2" ABOVE AND BELOW FLOOR. |
| 5 | PROVIDE (1)-3" PVC FOR TELEPHONE SERVICE. STUB 5'-0" OUTSIDE OF BUILDING. |
| 6 | PROVIDE (1)-3" PVC FOR CCTV SERVICE. STUB 5'-0" OUTSIDE OF BUILDING. |



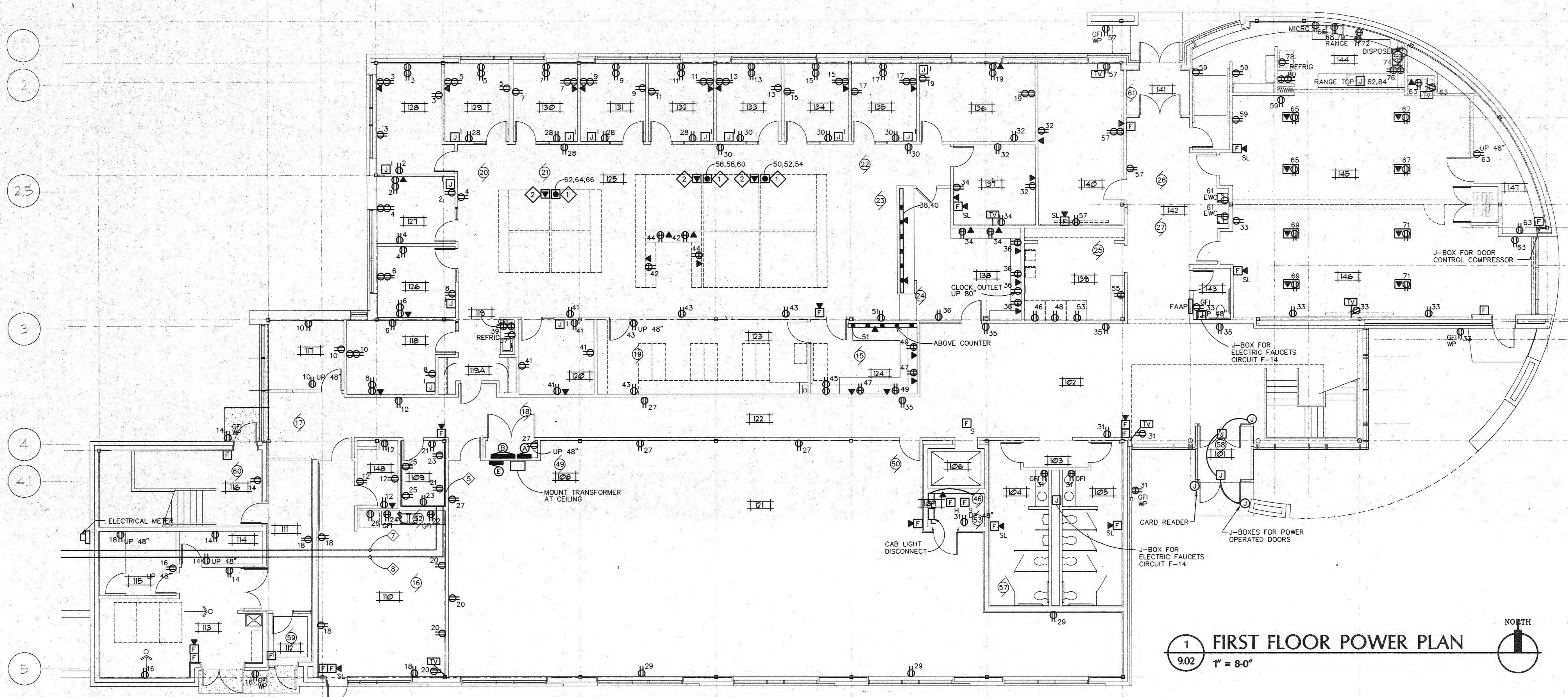
2 SECOND FLOOR POWER PLAN
9.02 1/8" = 1'-0"



3 SECURITY J-BOX DETAIL
9.02 N.T.S.



4 BACKBOX INSTALLATION DETAIL
9.02
BACKBOX AND CONDUIT SIZES
COMPUTER - 4"x4"x2" - 1" CONDUIT
TELEPHONE - 4"x4"x2" - 3/4" CONDUIT



1 FIRST FLOOR POWER PLAN
9.02 1" = 8'-0"

Date	Issuance/Revisions	Symbols
12/18/88	ISSUED FOR BIDDING	
1/11/89	ISSUED FOR OWNER REVIEW	
10/29/95	ISSUED FOR DESIGN LEVEL APPROVAL	

**DANE COUNTY
EXTENSION AND
AGRICULTURE CENTER**

FEN OAK COURT
MADISON, WISCONSIN

POWER FLOOR PLANS

Project Number: 9500602	Sheet No: 9.02
Drawn By: BC/UHB	