

DANE COUNTY EMERGENCY MANAGEMENT REMODEL
 5415 KING JAMES WAY
 FITCHBURG, WISCONSIN

CLIENT APPROVAL
 APPROVED
 APPROVED AS NOTED
 APPROVED BY / DATE:

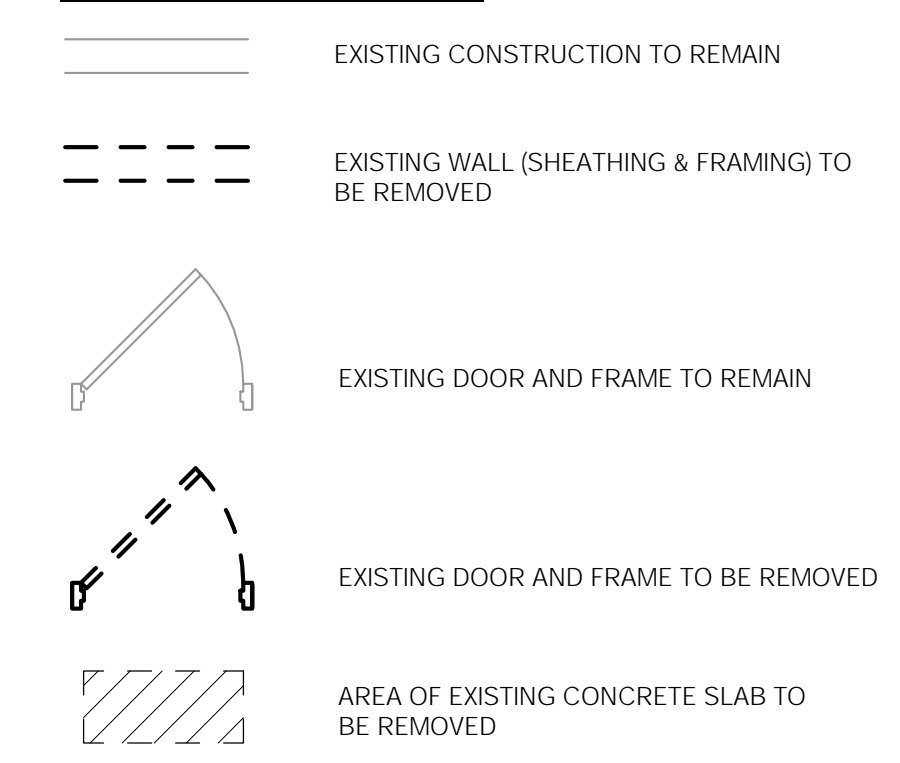
ISSUE RECORD

ADR SET	11/10/20
ISSUE FOR BID	06/08/21
ADDENDUM #1	07/14/21

PROJECT ARCHITECT
 RBS
DRAWN BY
 LMB
DATE
 7/12/2021 4:25:43 PM
PROJECT NUMBER
 2020-001

BASEMENT + FIRST FLOOR DEMOLITION PLAN
AD 1.1

DEMOLITION LEGEND

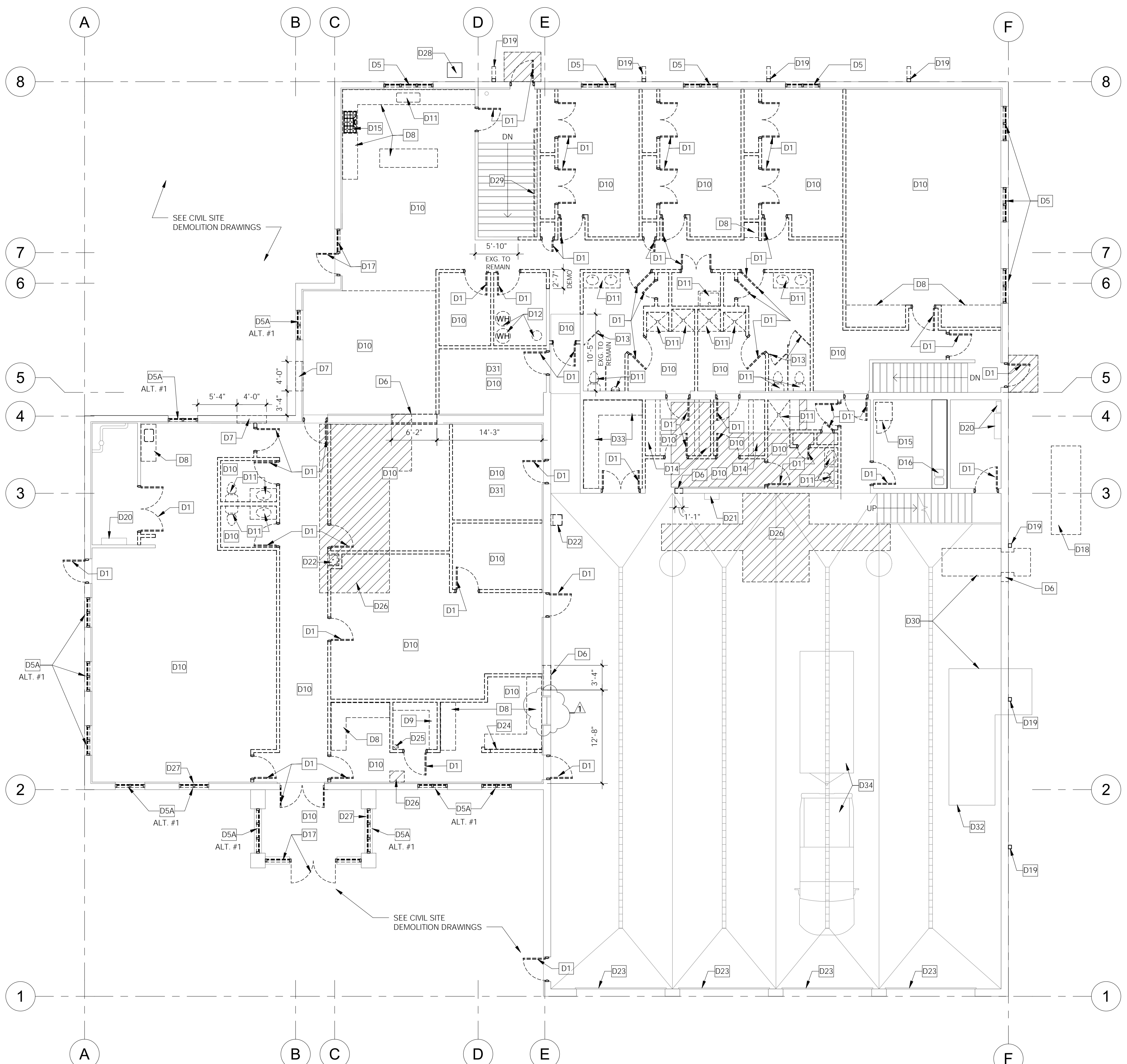


DEMOLITION GENERAL NOTES

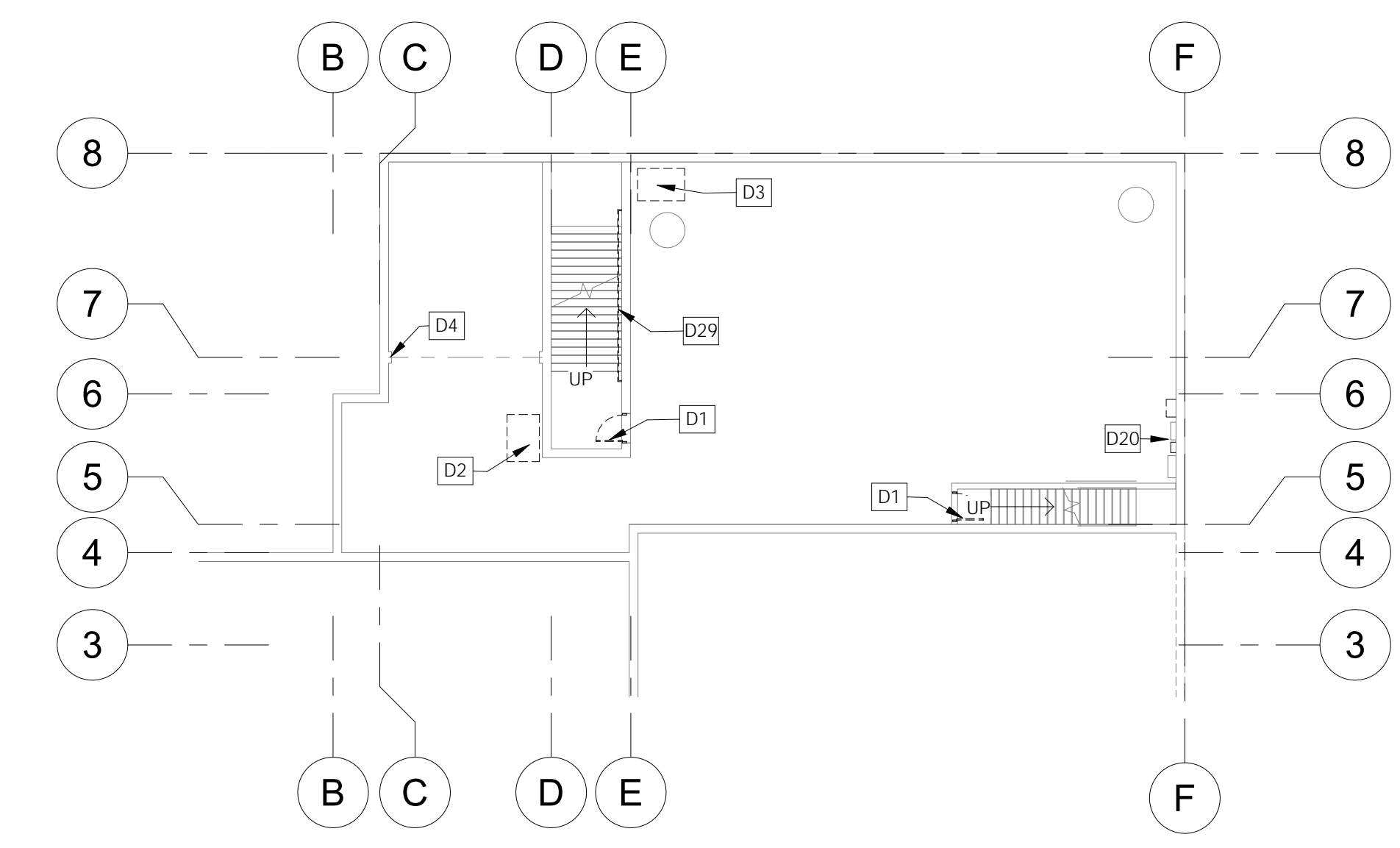
- COORDINATE ALL DEMOLITION WORK. REFER TO THE MECHANICAL, ELECTRICAL, PLUMBING, AND CIVIL DRAWINGS:
 - ELECTRICAL: REMOVE / CAP EXISTING ELECTRICAL EQUIPMENT, CONDUIT, BOXES AND WIRES AS REQUIRED.
 - COMPLETELY REMOVE EXISTING FIRE ALARM SYSTEM AND ALL EQUIPMENT.
 - PLUMBING: REMOVE AND CAP BELOW ADJACENT FINISHED SURFACES ALL EXISTING PIPING TO BE DEMOLISHED OR REVISED, TO MEET CURRENT CODE.
- PERFORM ALL DEMOLITION WORK AS NECESSARY TO ACCOMPLISH THE WORK, INCLUDING THE REMOVAL, DISPOSAL, STORAGE AND/OR RE-USE OF ITEMS AS INDICATED AND REQUIRED.
- PROVIDE TEMPORARY SUPPORT AND BRACING OF EXISTING STRUCTURE AS NECESSARY UNTIL CONSTRUCTION IS COMPLETE.
- COORDINATE THE DEMOLITION WORK TO ACCOMMODATE SCHEDULING OF NEW WORK.
- PREPARE SUBSTRATES AND SURFACES AS REQUIRED FOR NEW CONSTRUCTION.
- VERIFY ALL EXISTING DIMENSIONS, ITEMS, AND CONDITIONS IN FIELD.
- PATCH EXISTING SURFACES AFFECTED BY THE WORK TO MATCH SURFACES & SUBSTRATES.
- PROVIDE DAILY CLEAN UP OF OWNER'S EQUIPMENT AND REMOVE CONSTRUCTION DEBRIS.
- PROVIDE DUST CONTROL BETWEEN AREAS OF DEMOLITION AND OWNER'S EQUIPMENT.
- ITEMS NOT SHOWN DOTTED ON THE DEMOLITION DRAWING YET WHICH ARE VISIBLE OR COULD BE ANTICIPATED TO REQUIRE REMOVAL IN ORDER TO COMPLETE THE WORK ARE INCLUDED AS A PART OF THE DEMOLITION WORK.
- IT IS THE OWNER'S RESPONSIBILITY TO REMOVE ANY MATERIALS CONTAINING ASBESTOS. PRIOR TO THE COMMENCEMENT OF THE WORK, THE OWNER'S ASBESTOS ABATEMENT CONTRACTOR WILL REMOVE EXISTING MATERIALS CONTAINING ASBESTOS. THE CONTRACTOR SHALL NOTIFY THE OWNER WHEN HE ENCOUNTERS MATERIALS WHICH HE BELIEVES MAY CONTAIN ASBESTOS.
- A LIMITED AMOUNT OF CUTTING AND PROBING IN CMU WALLS AND THE PRE-CAST PLANK FLOOR SYSTEM HAS BEEN PERFORMED. CONTRACTOR IS RESPONSIBLE TO LOCATE AND PATCH THESE AREAS AND MATCH EXISTING CONSTRUCTION (P.T.M.E.).
- PROTECT EXISTING TRAILER AND VEHICLE FROM DAMAGE. COORDINATE RELOCATION WITH OWNER THROUGHOUT CONSTRUCTION.

DEMOLITION KEY NOTES

- BASEMENT**
- D1 REMOVE EXISTING DOOR AND FRAME.
 - D2 REMOVE EXISTING FURNACE. SEE MEP DRAWINGS.
 - D3 REMOVE EXISTING GREASE INTERCEPTOR. SEE PLUMBING DRAWINGS.
 - D4 REMOVE AND REPLACE THE BEAM END BEARING PLATE FOR BEAM REPAIR. SEE STRUCTURAL DRAWINGS.
- FIRST FLOOR**
- D1 REMOVE EXISTING DOOR AND FRAME.
 - D5 REMOVE EXISTING WINDOW AND PREPARE FOR NEW, TYPICAL ALL WINDOWS.
 - D5A REMOVE EXISTING WINDOW AND PREPARE FOR NEW, IF ALTERNATE #1 IS ACCEPTED. IF ALTERNATE #1 IS NOT ACCEPTED SEE ALLOWANCE #6.
 - D6 REMOVE EXISTING PORTION OF CMU BEARING WALL AND PREPARE FOR NEW OPENING. SEE STRUCTURAL DWGS. FOR NEW LINTEL.
 - D7 REMOVE EXISTING PORTION OF CMU WALL FOR NEW WINDOW. SALVAGE BLOCK FOR RELOCATION, IF POSSIBLE.
 - D8 REMOVE EXISTING COUNTER AND CASEWORK.
 - D9 REMOVE EXISTING SHELVING.
 - D10 REMOVE EXISTING FLOORING.
 - D11 REMOVE EXISTING PLUMBING FIXTURE AND ALL RELATED PIPING. SEE PLUMBING DWGS.
 - D12 REMOVE EXISTING WATER HEATERS/ WATER SOFTENER.
 - D13 REMOVE EXISTING TOILET PARTIONS.
 - D14 REMOVE EXISTING LOCKERS AND BENCH. SALVAGE LOCKERS FOR REINSTALLATION.
 - D15 REMOVE EXISTING APPLIANCE AND ALL RELATED WIRING AND PIPING. SEE MEP DWGS.
 - D16 EXISTING STAINLESS STEEL SINK AND COUNTER TO REMAIN. PROTECT DURING DEMOLITION.
 - D17 REMOVE EXISTING STOREFRONT DOORS AND WINDOWS, AND PREPARE FOR NEW.
 - D18 REMOVE EXISTING GENERATOR AND PAD.
 - D19 REMOVE EXISTING DOWNSPOUTS AND RECEPTORS. P.T.M.E. METAL FASCIA.
 - D20 EXISTING POWER PANELS. SEE ELECTRICAL DEMOLITION DWGS FOR SCOPE.
 - D21 EXISTING TOX ALERT TO REMAIN. PROTECT DURING DEMOLITION. SEE MECH. DWGS.
 - D22 REMOVE EXISTING WATER COOLER AND ALL RELATED PIPING SEE PLUMBING DWGS.
 - D23 EXISTING OVERHEAD DOOR TO REMAIN. PREP. FOR PAINT. ALLOWANCE FOR REPAIRS.
 - D24 REMOVE EXISTING GLAZING AND HOLLOW METAL FRAME.
 - D25 EXISTING ROOF DRAIN PIPING TO BE REMOVED AND RE-PIPED. SEE FLOOR PLAN FOR NEW LOCATION.
 - D26 REMOVE PORTION OF EXISTING CONCRETE FLOOR SLAB FOR NEW UNDERGROUND PLUMBING. SEE PLUMBING DRAWINGS.
 - D27 REMOVE EXISTING P.LAM. WINDOW SILLS AND PREPARE SURFACE FOR NEW SOLID SURFACE SILLS. TYPICAL ALL WINDOWS.
 - D28 EXISTING RADIO TOWER TO REMAIN. PROTECT FROM DAMAGE DURING CONSTRUCTION.
 - D29 REMOVE STEEL TUBE HANDRAIL AND SALVAGE FOR REINSTALLATION.
 - D30 SEE MECHANICAL DWGS. FOR SCOPE OF WORK.
 - D31 SEE ELEC. DWGS. FOR NEW FLOOR MOUNTED RECEPTACLES (P.T.M.E.).
 - D32 MAU SYSTEM TO REMAIN. PROTECT DURING CONSTRUCTION. SEE MECH. DWGS.
 - D33 EXG. STAINLESS STEEL COUNTERTOP TO BE REMOVED AND SALVAGED FOR MODIFICATION/REUSE. REMOVE EXG. CABINETS.
 - D34 EXG. OWNER VEHICLES TO BE PROTECTED AND MOVED AS REQ'D.

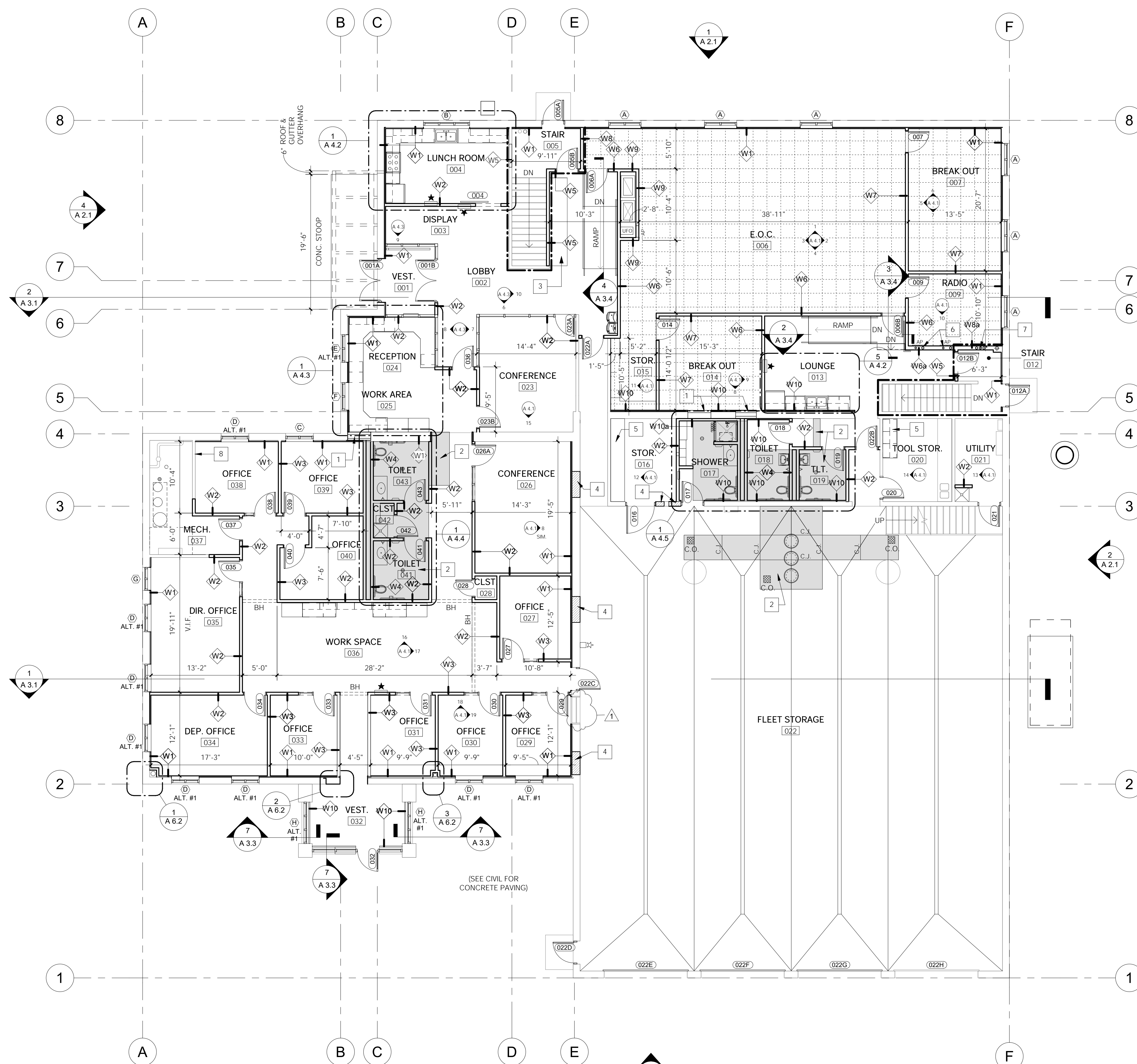


1 FIRST FLOOR DEMOLITION PLAN
 SCALE 1/8" = 1'-0"



2 BASEMENT DEMOLITION PLAN
 SCALE 1/16" = 1'-0"

NOT FOR CONSTRUCTION



1 FIRST FLOOR PLAN
SCALE 1/8" = 1'-0"

- NOTE:**
1. PATCH ALL HOLES IN CMU WALLS (EXTERIOR/INTERIOR) AND ALL CONCRETE PLANK FLOORING AND SLAB EDGES (P.T.M.E.).
 2. PATCH ALL HOLES IN GWB THAT REMAINS IN PLACE, INCLUDE ALL INSULATION AND FRAMING AS REQUIRED FOR A COMPLETE INSTALLATION (P.T.M.E.).
 3. BACK TO BACK J-BOXES ARE NOT ALLOWED. ALL J-BOXES IN OFFICES, CONFERENCE ROOMS, AND BREAK-OUT ROOMS SHALL BE SEALED AND CAULKED TO REDUCE SOUND TRANSMISSION THROUGHOUT THE FACILITY.
 4. PROVIDE WALL MOUNTED APs (ACCESS DOORS/PANELS) AS NOTED AND AS REQUIRED BY OWNER.

FLOOR PLAN LEGEND

- EXISTING WALL TO REMAIN
- NEW WALL
- EXISTING DOOR AND FRAME TO REMAIN
- NEW DOOR AND FRAME
- DOOR NUMBER, SEE SHEET A 6.1
- FIRE EXTINGUISHER
- SEMI-RECESSED FIRE EXTINGUISHER CABINET
- WALL TAG, SEE SHEET A 6.2
- WINDOW TAG, SEE SHEET A 2.1
- 1 HOUR FIRE-RATED WALL
- RAISED ACCESS FLOOR
- INDICATES AREA OF NEW CONCRETE FLOOR SLAB INFILL. SEE STRUCTURAL DRAWINGS.

FLOOR PLAN GENERAL NOTES

1. ALL DIMENSIONS SHALL BE VERIFIED AND COORDINATED WITH ALL OF THE WORK OF ALL TRADES.
2. WHEN UNDIMENSIONED PARTITIONS APPEAR IN CONJUNCTION WITH DOOR OPENINGS, THE DOOR WIDTH AND DOOR FRAME DETAILS DETERMINE THE LOCATION OF ADJACENT WALLS AND FRAMES.
3. DOOR OPENINGS THAT ARE NOT DIMENSIONALLY LOCATED ARE TO BE CENTERED BETWEEN WALLS OR POSITIONED WITH THE HINGED JAMB 3" AWAY FROM AN ADJACENT WALL OR COLUMN AS SHOWN ON THE PLANS AND/OR DETERMINED BY THE DETAILS.
4. NOTIFY ARCHITECT IMMEDIATELY OF DISCREPANCIES.
5. PARTITIONS ARE DIMENSIONED TO THE FACE OF THE WALL UNLESS NOTED OTHERWISE.
6. TYPICAL THICKNESS OF WALLS ARE NOMINALLY 5" UNLESS NOTED OTHERWISE.
7. ALL WOOD FRAMING MEMBERS THAT REST OR ARE ATTACHED TO CONCRETE OR MASONRY SHALL BE PRESSURE TREATED OR DECAY RESISTANT IN ACCORDANCE WITH IBC SECTION 2304.11.
8. ALL EXISTING AND NEW EXPOSED STEEL TO BE PAINTED SHALL BE WIRE BRUSHED AND CLEANED PRIOR TO PAINTING. REFER TO ROOM FINISH SCHEDULE FOR PAINT COLORS.
9. PROVIDE FLASHING, TYPICAL AT ALL NEW WINDOWS, DOORS, AND OTHER OPENINGS, ETC.
10. CONTRACTOR SHALL REMOVE ALL ADHESIVES, REPAIR, PATCH, AND LEVEL FLOOR SLAB IN PREPARATION FOR NEW FLOOR FINISHES.
11. PROTECT EXISTING TRAILER AND VEHICLE FROM DAMAGE. COORDINATE RELOCATION WITH OWNER THROUGHOUT CONSTRUCTION.
12. CONTRACTOR TO FURNISH AND INSTALL ALL WOOD BLOCKING AND MOUNTING BRACKETS FOR ALL TVS, CABINETS, GLASSBOARDS, SHELVING, COUNTERTOP BRACKETS, AND OTHER WALL MOUNTED FIXTURES, EQUIPMENT, AND DEVICES. COORDINATE ALL LOCATIONS WITH OWNER PRIOR TO INSTALLATION.
13. CONTRACTOR TO VERIFY AND CONFIRM ALL SIZES AND LOCATIONS OF OWNER FURNISHED EQUIPMENT WITH THE OWNER PRIOR TO CONSTRUCTION OF WALLS.
14. CONTRACTOR TO VERIFY AND CONFIRM ALL WATER, POWER, AND GAS CONNECTIONS OF OWNER FURNISHED EQUIPMENT WITH THE OWNER PRIOR TO ROUGH-IN OF ALL UTILITIES.
15. CONTRACTOR SHALL PROVIDE ALL FIRE SAFING, SEALANT, FLASHINGS, FRAMES, ESCUTCHEONS AND TRIM FOR ALL EXISTING OPENINGS TO BE RE-USED OR REMAINING AND FOR ALL NEW OPENINGS.

FIRST FLOOR PLAN KEY NOTES

1. INFILL DOOR OPENING W/ 3-5/8" 20 GAUGE MTL STUDS, 5/8" GWB., AND SOUND ATTENUATION BATTS.
2. AREA OF NEW CONCRETE SLAB INFILL - SEE STRUCT. DWGS.
3. NEW FLOOR, SEE STRUCTURAL DRAWINGS.
4. CMU INFILL AT DOOR/WINDOW OPENING, SEE STRUCT. DWG. DETAIL 9/S4.1
5. MODIFIED S.S. COUNTER TOP. PROVIDE ALL CUTTING, WELDING, POLISHING, ATTACHMENTS, ETC. AS REQ'D.
6. NEW ELECTRICAL SLEEVES THROUGH PRECAST PLANK FLOOR FOR NETWORK CABLING. SEE PL-1, STRUCT., ELEC. AND LOW VOLTAGE TECH. DWGS. VERIFY SIZE AND LOCATIONS W/ OWNER PRIOR TO FINAL LAYOUT AND SUBMISSION OF SHOP DWGS.
7. (3) 4" CONDUIT IN WALL FOR RADIO WIRING (RUN FROM MEZZANINE RADIO CLOSET TO RAISED ACCESS FLOOR). VERIFY SIZE & LOCATION W/ OWNER PRIOR TO FINAL LAYOUT & SUBMISSION OF SHOP DWGS.
8. ADD SOUND ATT. BATT AND GWB UP TO ROOF DECK TO EXG. WALL.

PRECAST CONCRETE PLANK NOTES
SEE SHEET PL-1 FOR EXISTING PRECAST CONCRETE PLANK REQUIREMENTS

PRAIRIE FORGE GROUP
300 CARDINAL DRIVE
SUITE 160
SAINT CHARLES IL 60175
630.221.0671 | P
630.221.0118 | F
www.prairieforgroup.com

COPYRIGHT STATEMENT
THESE PLANS ARE COPYRIGHTED AND ARE SUBJECT TO COPYRIGHT PROTECTION AS AN "ARCHITECTURAL WORK" UNDER SECTION 102 OF THE COPYRIGHT ACT, 17 U.S.C. AS AMENDED (DECEMBER, 1990). KNOWN AS: THE ARCHITECTURAL WORK. THE PROTECTION PROVIDED TO PRAIRIE FORGE GROUP INCLUDES, BUT IS NOT LIMITED TO, THE ORIGINAL FORMS, WELL AS THE ARRANGEMENT AND COMPOSITION OF LINES AND ELEMENTS OF THE DESIGN. WITHOUT WRITTEN APPROVAL OF PRAIRIE FORGE GROUP ANY UNAUTHORIZED USE OF THESE PLANS, WORK OR HOME REPRESENTED, CAN LEGALLY RESULT IN THE COSSION OF CONSTRUCTION, SECURE OF PLANS, AND/OR MONETARY COMPENSATION. PRAIRIE FORGE GROUP IS NOT RESPONSIBLE FOR ANY CLAIMS, DAMAGES, OR EXPENSES ARISING OUT OF THE UNAUTHORIZED USE OF THE INFORMATION CONTAINED IN THESE ELECTRONIC FILES. THESE PLANS MAY NOT BE REPRODUCED, COPIED, TRANSMITTED, OR USED TO VERIFY ALL DIMENSIONS AND OTHER RELATED INFORMATION.
COPYRIGHT © 2018-2022
PRAIRIE FORGE GROUP | SAINT CHARLES IL



DANE COUNTY EMERGENCY MANAGEMENT REMODEL
5415 KING JAMES WAY
FITCHBURG, WISCONSIN

CLIENT APPROVAL
 APPROVED
 APPROVED AS NOTED
APPROVED BY / DATE:

ISSUE RECORD

ADR SET	11/10/20
ISSUE FOR BID	06/08/21
ADDENDUM #1	07/14/21

PROJECT ARCHITECT
RBS
DRAWN BY
LMB
DATE
7/12/2021 4:46:49 PM
PROJECT NUMBER
2020-001

FIRST FLOOR PLAN
A 1.2

NOT FOR CONSTRUCTION

COPYRIGHT STATEMENT
 THESE PLANS ARE COPYRIGHTED AND ARE SUBJECT TO COPYRIGHT PROTECTION AS AN ARCHITECTURAL WORK UNDER SECTION 102 OF THE COPYRIGHT ACT OF 1976. NO PART OF THESE PLANS, WORK OR INVENTIONS REPRESENTED ON THESE PLANS, WORK OR INVENTIONS, OR ANY PART THEREOF, MAY BE REPRODUCED OR TRANSMITTED IN ANY FORM OR BY ANY MEANS, ELECTRONIC OR MECHANICAL, INCLUDING PHOTOCOPYING, RECORDING, OR BY ANY INFORMATION STORAGE AND RETRIEVAL SYSTEM, WITHOUT THE WRITTEN PERMISSION OF PRAIRIE FORGE GROUP. PRAIRIE FORGE GROUP IS NOT RESPONSIBLE FOR ANY CLASH, DAMAGE, OR EXPENSE ARISING OUT OF THE UNAUTHORIZED USE OF THE INFORMATION CONTAINED IN THESE ELECTRICAL PLANS. THESE PLANS MAY NOT ACCURATELY REFLECT THE FINAL AS-BUILT CONDITIONS. IT IS THE RESPONSIBILITY OF THE USER TO VERIFY ALL LOCALS, ORDINANCES, AND OTHER RELATED INFORMATION.
 COPYRIGHT © 2018-2023
 PRAIRIE FORGE GROUP | SAINT CHARLES IL



DANE COUNTY EMERGENCY MANAGEMENT REMODEL
 5415 KING JAMES WAY
 FITCHBURG, WISCONSIN

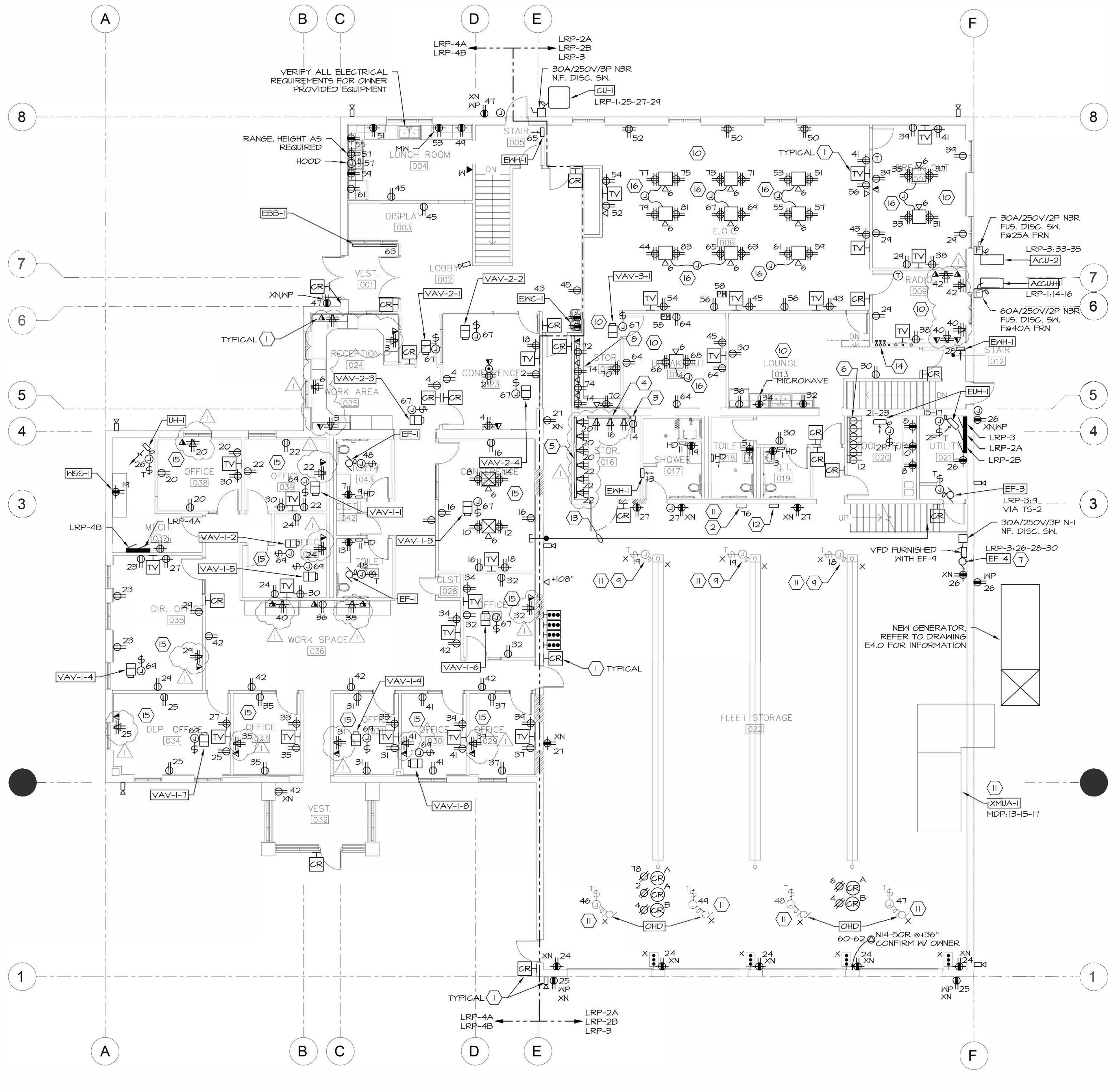
CLIENT APPROVAL
 APPROVED
 APPROVED AS NOTED
 APPROVED BY / DATE:

ISSUE RECORD

DD SET	08/04/20
CD CHECK SET	11/20/20
98% CD REVIEW	02/11/21
HVAC REDESIGN	04/30/21
ISSUE FOR BID	06/08/21
ADDENDUM 1	07/14/21

CHECKED BY
 MOV
DRAWN BY
 JAT,KJS,MOV
DATE
 6/7/2021 10:29:24 AM
PROJECT NUMBER
 2020-001

ELECTRICAL FIRST FLOOR POWER PLAN
E1.1



DEMOLITION LEGEND
 X - EXISTING TO REMAIN
 R - EXISTING TO BE REMOVED
 XN - EXISTING DEVICE REPLACED WITH NEW

- KEYED NOTES**
- ELECTRICAL CONTRACTOR SHALL REFER TO COMMUNICATIONS "T", AUDIOVISUAL "AV" AND SECURITY "SS" DRAWINGS FOR ADDITIONAL REQUIRED JUNCTION BOX LOCATIONS AND CONDUIT REQUIREMENTS.
 - EXISTING GAS DETECTION CONTROL PANEL.
 - 6'-0" LONG WIREMOLD #V3000 BASE, COVER, DEVICE BRACKET, DUPLEX COVER, END FEED, ETC. MOUNTED VERTICALLY @ 1'-0" AFF. WITH THREE (3) 20A DUPLEX RECEPTACLES EVENLY SPACED.
 - 6'-0" LONG WIREMOLD #V3000 BASE, COVER, DEVICE BRACKET, DUPLEX COVER, END FEED, ETC. MOUNTED HORIZONTALLY WITH THREE (3) 20A COMBINATION DUPLEX / USB RECEPTACLES EVENLY SPACED. CONFIRM MOUNTING HEIGHT WITH OWNER.
 - 11'-0" LONG WIREMOLD #V3000 BASE, COVER, DEVICE BRACKET, DUPLEX COVER, END FEED, ETC. MOUNTED HORIZONTALLY WITH SIX (6) 20A COMBINATION DUPLEX / USB RECEPTACLES EVENLY SPACED MOUNTED 6" ABOVE COUNTER.
 - 6'-0" LONG WIREMOLD #V2000 BASE, COVER, DEVICE BRACKET, DUPLEX COVER, END FEED, ETC. MOUNTED 6" ABOVE COUNTER TO CENTER LINE OF WIREMOLD.
 - INTERLOCK NEW EF-4 WITH EXISTING XNMA-1 AND EXISTING GAS DETECTION SYSTEM. REFER TO MECHANICAL DRAWINGS FOR ADDITIONAL INFORMATION.
 - THREE (3) DUPLEX RECEPTACLES AND THREE (3) DATA OUTLETS MOUNTED AT LOCATIONS / HEIGHTS AS NOTED ON ARCHITECTURAL DRAWING A4.1 / ELEVATION II. CONFIRM WITH OWNER PRIOR TO INSTALLATION.
 - RECONNECT EXISTING CO-RAY-VAC TO NEW CIRCUITS AS INDICATED.
 - THERE SHALL BE NO BACK-TO-BACK DEVICES INSTALLED IN THE FOLLOWING ROOMS RELATED TO THE E.O.C., ROOM NUMBERS 006, 007, 004, 013, 014, & 015. ALL DEVICE BOXES INSTALLED IN HALLS SHALL UTILIZE FIRE RATED ACOUSTIC PUDDY PADS.
 - ALL EXISTING SYSTEMS TO REMAIN SHALL BE TESTED FOR OPERATION AND FUNCTIONALITY.
 - GENERATOR REMOTE ANNUNCIATOR PANEL.
 - THREE (3) - 4" EMT CONDUITS ROUTED FROM CEILING SPACE OF CONFERENCE 026 TO RADIO CLOSET 046. SEE DRAWING EI.2 FOR CONTINUATION TO RADIO CLOSET. ELECTRICAL CONTRACTOR SHALL UTILIZE 40 DEG. ELBOW TO TURN DOWN WALL AND MOUSL 1/8" UNILET W/ COVER FOR PENETRATION THROUGH WALL INTO CONFERENCE 026 CEILING SPACE. VERIFY FINAL QUANTITIES, SIZES AND LOCATIONS WITH OWNER PRIOR TO INSTALLATION.
 - THREE (3) - 4" EMT CONDUITS ROUTED FROM RADIO CLOSET 046. SEE DRAWING EI.2 FOR CONTINUATION. STUB CONDUITS INTO EOC RAISED FLOOR. VERIFY FINAL QUANTITIES, SIZES AND LOCATIONS WITH OWNER PRIOR TO INSTALLATIONS.
 - THERE SHALL BE NO BACK-TO-BACK DEVICES INSTALLED IN THE FOLLOWING ROOMS, ROOM NUMBERS 026, 021, 024, 030, 031, 032, 034, 035, 036, 038, 039, AND 040.
 - PROVIDE POWERMATE FLEXIBLE CABLES FROM EACH FLOOR BOX IN THE RAISED ACCESS FLOOR TO EACH JUNCTION BOX FOR POWER DISTRIBUTION AND BRANCH CIRCUIT TERMINATIONS. THE CABLE LENGTHS SHALL BE BETWEEN 8'-0" AND 15'-0", TO ACCOMMODATE COMPLETE ACCESS OF POWER THROUGHOUT EACH ROOM. COORDINATE AND VERIFY THE QUANTITIES OF FLOOR BOXES, JUNCTION BOXES AND THE POWERMATE FLEXIBLE CABLE LENGTHS WITH THE ACCESS FLOOR CONTRACTOR.

NOTE: ELECTRICAL CONTRACTOR SHALL NOT CORE ANY NEW HOLES IN THE EXISTING PRE-CAST FLOOR PLANKING WITHOUT CONSULTING THE STRUCTURAL ENGINEER.

ELECTRICAL FIRST FLOOR POWER PLAN
 SCALE 1/8" = 1'-0"

WT Group
 Engineering • Design • Consulting
 Structural | Mechanical | Electrical | Plumbing
 Civil | Land Survey | Telecommunication | Acoustic
 Accessibility Consulting | Design & Program Management
 Engineering with Precision, Pace & Passion.
 2676 Pratum Avenue | Hoffman Estates, IL 60192
 P: 224.293.6333 | F: 224.293.6444
 wtengineering.com
 IL License No. 184.007570-0015 | Exp. 04.30.2023
 © COPYRIGHT 2020 THE W-T GROUP, LLC

FIRE ALARM SYMBOLS

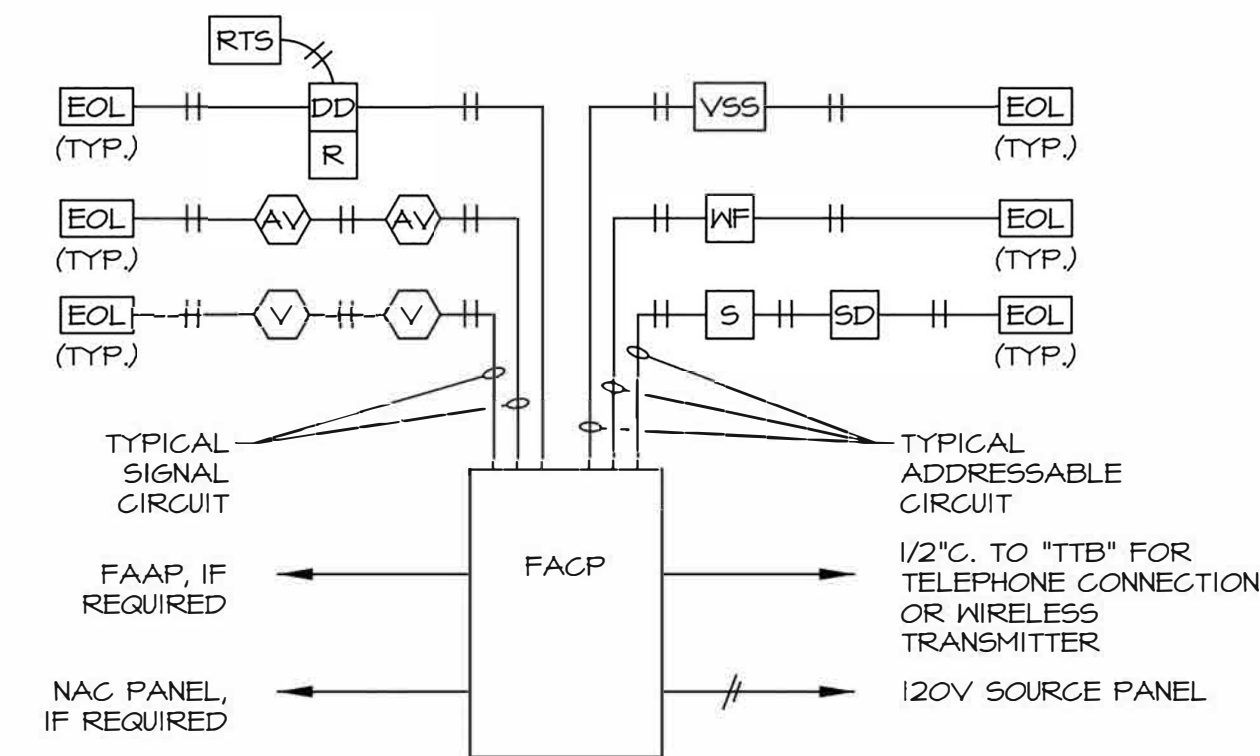
FACP	ADDRESSABLE FIRE ALARM CONTROL PANEL WITH REMOTE 24 HOUR TELEPHONE MONITORING
FAAP	FIRE ALARM ANNUNCIATOR PANEL
S	FIRE ALARM SYSTEM DUAL ACTION PULL STATION (+48" AFF, MOUNT WITHIN 5 FT. OF DOOR)
AV	FIRE ALARM SYSTEM HORN & STROBE LIGHT (AUDIO-VISUAL ALARM, +80" AFF, CANDELA RATING BY OTHERS)
V	VISUAL STROBE LIGHT (+80" AFF, CANDELA RATING BY OTHERS)
SD	SMOKE DETECTOR, MINIMUM 3FT. FROM SUPPLY VENT
D	HEAT DETECTOR, 135° DEGREE FIXED TEMP/RATE OF RISE
DD	HVAC DUCT TYPE SMOKE DETECTOR
RTS	REMOTE INDICATING LIGHT WITH KEY-OPERATED TEST SWITCH. VERIFY LOCATION OF LIGHT AND KEY SWITCH WITH INSPECTOR.
R	FAN SHUT DOWN RELAY
K	KNOX BOX (WEATHER PROOF)
NAC	NOTIFICATION APPLIANCE CIRCUIT EXPANSION PANEL
B	SPRINKLER ALARM BELL
WF	SPRINKLER ALARM FLOW SWITCH, BY DIVISION 23, WIRED BY E.C.
VSS	SPRINKLER ALARM TAMPER SWITCH, BY DIVISION 23, WIRED BY E.C.

NOTE: FIRE ALARM SYSTEM SHALL BE AN ADDRESSABLE TYPE ZONED PER NFPA CODE, NON-CODED, CONTINUOUS SOUNDING, UL LISTED, WITH SERIES BATTERIES, MINIMUM WIRE TWO CONDUCTOR INSULATED #14 AWG, TWISTED PAIR, PROVIDE BACKBOXES WITH MINIMUM 1/2" CONDUIT STUBBED INTO ACCESSIBLE CEILING SPACE FOR EACH DEVICE. PROVIDE CONDUIT IN NON-ACCESSIBLE CEILING SPACES. FIRE ALARM CABLE SHALL BE ROUTED FREE-AIR UNLESS A FULL CONDUIT SYSTEM IS REQUIRED BY THE LOCAL AUTHORITY HAVING JURISDICTION.

DEVICE LAYOUT IS REPRESENTATIVE ONLY. PROVIDE ACTUAL QUANTITY OF DEVICES PER NFPA 72, NFPA 101, IBC, NEC, IFC, AND PER LOCAL AUTHORITY HAVING JURISDICTION REQUIREMENTS. ELECTRICAL CONTRACTOR SHALL VERIFY EXACT QUANTITY OF FIRE ALARM DEVICES PRIOR TO BIDDING.

ELECTRICAL CONTRACTOR IS RESPONSIBLE FOR THE FIRE ALARM PERMIT AND CONSTRUCTION DOCUMENTS. SUBMIT SHOP DRAWINGS TO ENGINEER AND PERMITTING AUTHORITY FOR REVIEW PRIOR TO INSTALLATION AND RESUBMIT BASED ON COMMENTS, AS REQUIRED. PROVIDE BATTERY AND VOLTAGE DROP CALCULATIONS.

FIRE ALARM DEVICES WIRED TO FACP SHALL BE ADDRESSABLE (DUCT SMOKE DETECTORS, PULL STATIONS, HORNS, VISUALS, FLOW SWITCHES, TAMPER SWITCHES, AND BELLS). VERIFY AND COORDINATE IN FIELD. FACP SHALL BE CONNECTED TO TELEPHONE TERMINAL CABINET OR WIRELESS TRANSMITTER.



FIRE ALARM RISER DIAGRAM

NOT TO SCALE

ELECTRICAL SYMBOLS

	LIGHT FIXTURE. CAPITAL LETTER DENOTES FIXTURE TYPE, NUMERAL INDICATES CIRCUIT ASSIGNMENT, AND SUBSCRIPT LETTER DENOTES SWITCH LEG. SHADING OF ANY FIXTURE, AS SHOWN, INDICATES FIXTURE SHALL BE CIRCUITED TO EMERGENCY / UNSWITCHED NIGHT LIGHT CIRCUIT. SEE "LIGHTING FIXTURE SCHEDULE" FOR ADDITIONAL INFORMATION.		CORD REEL TYPE "A", 20A, 125V W/ 45'-0" 12/3 CORD & CONNECTOR. HUBBELL #HBL145123C20Y
			CORD REEL TYPE "B", 10A, 125V W/ 45'-0" 16/3 CORD & LED LAMP. HUBBELL #HBL145163LEDY
			DISTRIBUTION PANEL
			MOTOR
			PHOTO ELECTRIC CONTROL, ROOF MOUNTED, 120V OPERATION, 20A RATED
			CONDUIT ROUTED CONCEALED IN CEILING OR WALL CONSTRUCTION. (CROSS LINES DENOTE NUMBER OF WIRES.)
			CONDUIT ROUTED EXPOSED, PARALLEL OR PERPENDICULAR TO WALLS.
			CONDUIT ROUTED CONCEALED IN CONCRETE FLOOR SLAB OR UNDERGROUND.
			AUXILIARY JUNCTION BOX
			FLEXIBLE CONDUIT CONNECTION
			HOME RUN TO PANELBOARD
			CONDUIT PHASE CONDUCTORS NEUTRAL CONDUCTOR EQUIPMENT GROUND ISOLATED GROUND
			TELEPHONE OUTLET, WITH 3/4" CONDUIT STUB ABOVE ACCESSIBLE CEILING. SEE LOW VOLTAGE DRAWINGS.
			DATA SYSTEM OUTLET WITH 3/4" CONDUIT STUB ABOVE ACCESSIBLE CEILING. SEE LOW VOLTAGE DRAWINGS.
			DATA AND TELEPHONE OUTLET, WITH 3/4" CONDUIT STUB ABOVE ACCESSIBLE CEILING. SEE LOW VOLTAGE DRAWINGS.
			TV OUTLET @ +60" AFF., WITH 3/4" CONDUIT STUB ABOVE ACCESSIBLE CEILING. SEE LOW VOLTAGE DRAWINGS.
			CEILING MOUNTED OCCUPANCY SENSOR "AUTO ON / AUTO OFF"
			CEILING MOUNTED VACANCY SENSOR "MANUAL ON / AUTO OFF"
			CEILING MOUNTED DAYLIGHT SENSOR
			LIGHTING POWER PACK
			CARD READER, SEE LOW VOLTAGE DRAWINGS
			SECURITY CAMERA, SEE LOW VOLTAGE DRAWINGS
			OVERHEAD DOOR OPERATOR
			HAND DRYER - REFER TO ARCHITECTURAL DRAWINGS FOR SPECIFICATION.
			AUTOMATIC TRANSFER SWITCH
			CIRCUIT BREAKER

ELECTRIC HEAT SCHEDULE

	RECESSED ELECTRICAL WALL HEATER "MARKEL" #E3322TD-RP 1.0 KW, 120V, 1PH WITH RECESSED MOUNTING BOX
	ELECTRICAL UNIT HEATER "MARKEL" #HF5T05T1874W, 200W, 1PH WITH T-STAT AND MOUNTING BRACKET
	PEDESTAL MOUNTED ELECTRICAL DRAFT BARRIER HEATER "MARKEL" #E9112-165-ITS-PD, 6'-0" LONG, 990W, 120V, 1PH

RECEPTACLE SHADING DENOTES SWITCHED OUTLET

RECEPTACLE CROSS LINE DENOTES 6" ABOVE COUNTER OR BACKSPLASH. RECEPTACLES AT TV'S TO BE AT +60" AFF.

RECEPTACLE SHADING DENOTES GROUND FAULT CIRCUIT INTERRUPTER "GFCI". NEMA 5-20R

DOUBLE DUPLEX (QUAD) RECEPTACLE

RECEPTACLE SHADING DENOTES SWITCHED OUTLET

NEMA 5-20R DUPLEX RECEPTACLE WITH TWO (2) USB PORTS LEVITON M50AA-W OR EQUAL

NEMA 5-20R DUPLEX RECEPTACLE WITH TWO (2) USB PORTS 6" ABOVE COUNTER OR BACKSPLASH.

NEMA 5-20R DOUBLE DUPLEX (QUAD) RECEPTACLE WITH TWO (2) USB PORTS EACH, 15" A.F.F.

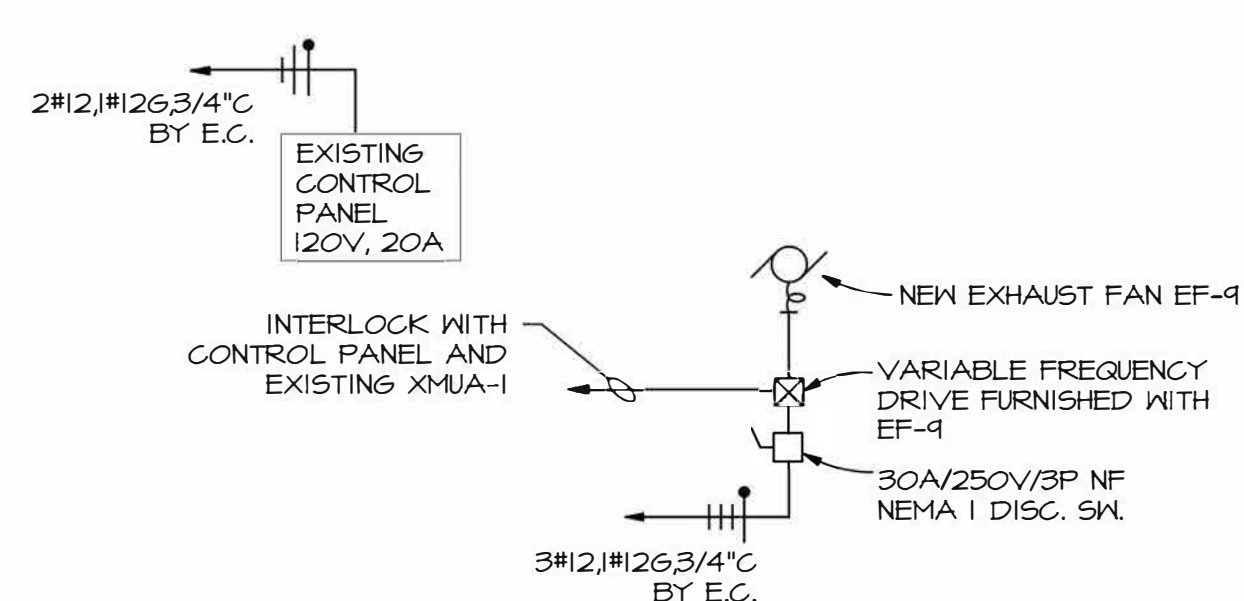
CEILING-MOUNTED RECEPTACLE

SPECIAL PURPOSE RECEPTACLE NEMA CONFIGURATION AS REQUIRED BY MANUFACTURERS EQUIPMENT. VERIFY CONDUIT, CONDUCTOR AND DISCONNECT/CIRCUIT BREAKER REQUIREMENTS PRIOR TO ROUGH-IN

6" DIAMETER POWER/TEL/DATA POKE-THRU DEVICE, DEVICES OR HARD-WIRED CONNECTION AS INDICATED ON DRAWINGS

RAISED FLOOR BOX, ATKORE CII HIGH CAPACITY 2000 W/ 4-DUPLEX RECEPTACLES AND 6 - DATA CONNECTIONS. PROVIDE POWERMATE FLEXIBLE CABLES FROM EACH FLOOR BOX IN THE RAISED ACCESS FLOOR TO EACH JUNCTION BOX FOR POWER DISTRIBUTION AND BRANCH CIRCUIT TERMINATIONS. THE CABLE LENGTHS SHALL BE BETWEEN 8'-0" AND 15'-0", TO ACCOMMODATE COMPLETE ACCESS OF POWER THROUGHOUT EACH ROOM. COORDINATE AND VERIFY THE QUANTITIES OF FLOOR BOXES, JUNCTION BOXES AND THE POWERMATE FLEXIBLE CABLE LENGTHS WITH THE ACCESS FLOOR CONTRACTOR. SEE COMMUNICATION DRAWINGS FOR DATA REQUIREMENTS. COVER FINISH AS SELECTED BY ARCHITECT.

CONCRETE FLOOR BOX, LEGRAND #RFB1-06 & #RFB19BTC W/ 4-DUPLEX RECEPTACLES AND 6 - DATA CONNECTIONS. SEE COMMUNICATION DRAWINGS FOR DATA REQUIREMENTS. COVER FINISH AS SELECTED BY ARCHITECT.



DETAIL - VEHICLE EXHAUST DETECTION

SCALE: NONE

NOT FOR CONSTRUCTION

PRAIRIE FORGE GROUP
 300 CARDINAL DRIVE
 SUITE 100
 SAINT CHARLES, IL 60155
 630.221.0671 | P
 630.221.0118 | F
 www.prairieforgergroup.com

COPYRIGHT STATEMENT
 THESE PLANS ARE UNREGISTERED AND ARE SUBJECT TO COPYRIGHT PROTECTION AS AN "ARCHITECTURAL WORK" UNDER SECTION 102 OF THE COPYRIGHT ACT OF 1976, AS AMENDED DECEMBER 1992, KNOWN AS "THE ARCHITECTURAL WORK" COPYRIGHT PROTECTION ACT OF 1990. THE PROTECTION PROVIDED BY THE ARCHITECTURAL AND COPYRIGHT ACTS IS NOT LIMITED TO THE ORIGINAL FORM AND WILL AS THE ARCHITECTURE AND CONSTRUCTION OF SPACES AND ELEMENTS OF THE DESIGN. WITHOUT WRITTEN APPROVAL OF PRAIRIE FORGE GROUP, ANY REPRODUCTION OF THESE PLANS, WORK OR HOME REPRESENTED, CAN BE CONSIDERED AS AN INFRINGEMENT OF THE ARCHITECTURAL, DESIGN OF PLANS, AND/OR INTELLECTUAL PROPERTY RIGHTS OF PRAIRIE FORGE GROUP. PRAIRIE FORGE GROUP IS NOT RESPONSIBLE FOR ANY CLASHES, OMISSIONS OR ERRORS ARISING OUT OF THE UNREGISTERED USE OF THE INFORMATION CONTAINED IN THESE ELECTRICAL PLANS. THESE PLANS MAY NOT BE ACCURATELY REFLECT THE FINAL AS-BUILT CONDITIONS. IT IS THE RESPONSIBILITY OF THE USER TO VERIFY ALL LOCATIONS, DIMENSIONS AND OTHER RELATED INFORMATION.

© COPYRIGHT © 2018-2023
 PRAIRIE FORGE GROUP | SAINT CHARLES, IL



DANE COUNTY EMERGENCY MANAGEMENT REMODEL

5415 KING JAMES WAY
 FITCHBURG, WISCONSIN

CLIENT APPROVAL

APPROVED

APPROVED AS NOTED

APPROVED BY / DATE:

ISSUE RECORD

DD SET	08/04/20
CD CHECK SET	11/20/20
98% CD REVIEW	02/11/21
HVAC REDESIGN	04/30/21
ISSUE FOR BID	06/08/21
1 ADDENDUM 1	07/14/21

CHECKED BY

MOV

DRAWN BY

JAT, KJS, MOV

DATE

6/7/2021 10:29:24 AM

PROJECT NUMBER

2020-001

W-T Group
 Engineering • Design • Consulting
 Structural | Mechanical | Electrical | Plumbing
 Civil | Land Survey | Telecommunication | Hydraulic
 Accessibility Consulting | Design & Program Management
 Engineering with Precision, Pace & Passion.

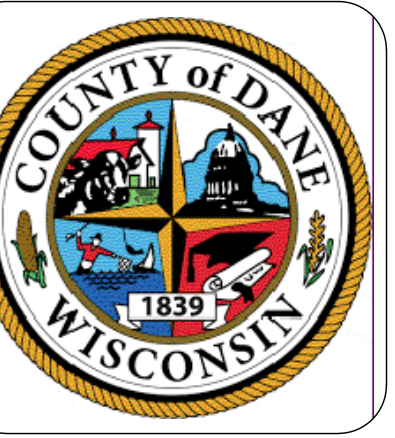
2675 Pratum Avenue | Hoffman Estates, IL 60192
 P: 224.293.6333 | F: 224.293.6444
 wtengineering.com

IL License No: 184.007570-0015 | Exp: 04.30.2023
 © COPYRIGHT 2020 THE W-T GROUP, LLC

ELECTRICAL SYMBOLS, SCHEDULES & DETAILS

E4.3

COPYRIGHT STATEMENT
THESE PLANS ARE CONSIDERED TO BE SUBJECT TO COPYRIGHT PROTECTION AS AN ARCHITECTURAL WORK UNDER SECTION 102 OF THE COPYRIGHT ACT OF 1976, AS AMENDED DECEMBER 1990, AND UNDER AS THE ARCHITECTURAL WORKS COPYRIGHT PROTECTION ACT OF 1990. THE PROTECTION PROVIDED TO PRAIRIE FORGE GROUP INCLUDES, BUT IS NOT LIMITED TO, THE OVERALL FORM AS WELL AS THE ARRANGEMENT AND COMPOSITION OF SPACES AND ELEMENTS OF THE DESIGN. WITHOUT WRITTEN APPROVAL OF PRAIRIE FORGE GROUP, NO PART OF THESE PLANS OR ANY UNAUTHORIZED USE OF THESE PLANS, IN WHOLE OR IN PART, OR FOR ANY MONETARY COMPENSATION, SHALL BE REPRODUCED, COPIED, TRANSMITTED, OR OTHERWISE MADE PUBLIC IN ANY MANNER. PRAIRIE FORGE GROUP IS NOT RESPONSIBLE FOR ANY CLAIMS, DAMAGES, OR LOSSES ARISING OUT OF THE UNAUTHORIZED USE OF THE INFORMATION CONTAINED IN THESE PLANS. IT IS THE RESPONSIBILITY OF THE USER TO VERIFY ALL LAYOUTS, DIMENSIONS, AND OTHER RELATED INFORMATION.
COPYRIGHT © 2018-2023
PRAIRIE FORGE GROUP | SAINT CHARLES IL



DANE COUNTY EMERGENCY
MANAGEMENT REMODEL
5415 KING JAMES WAY
FITCHBURG, WISCONSIN

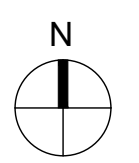
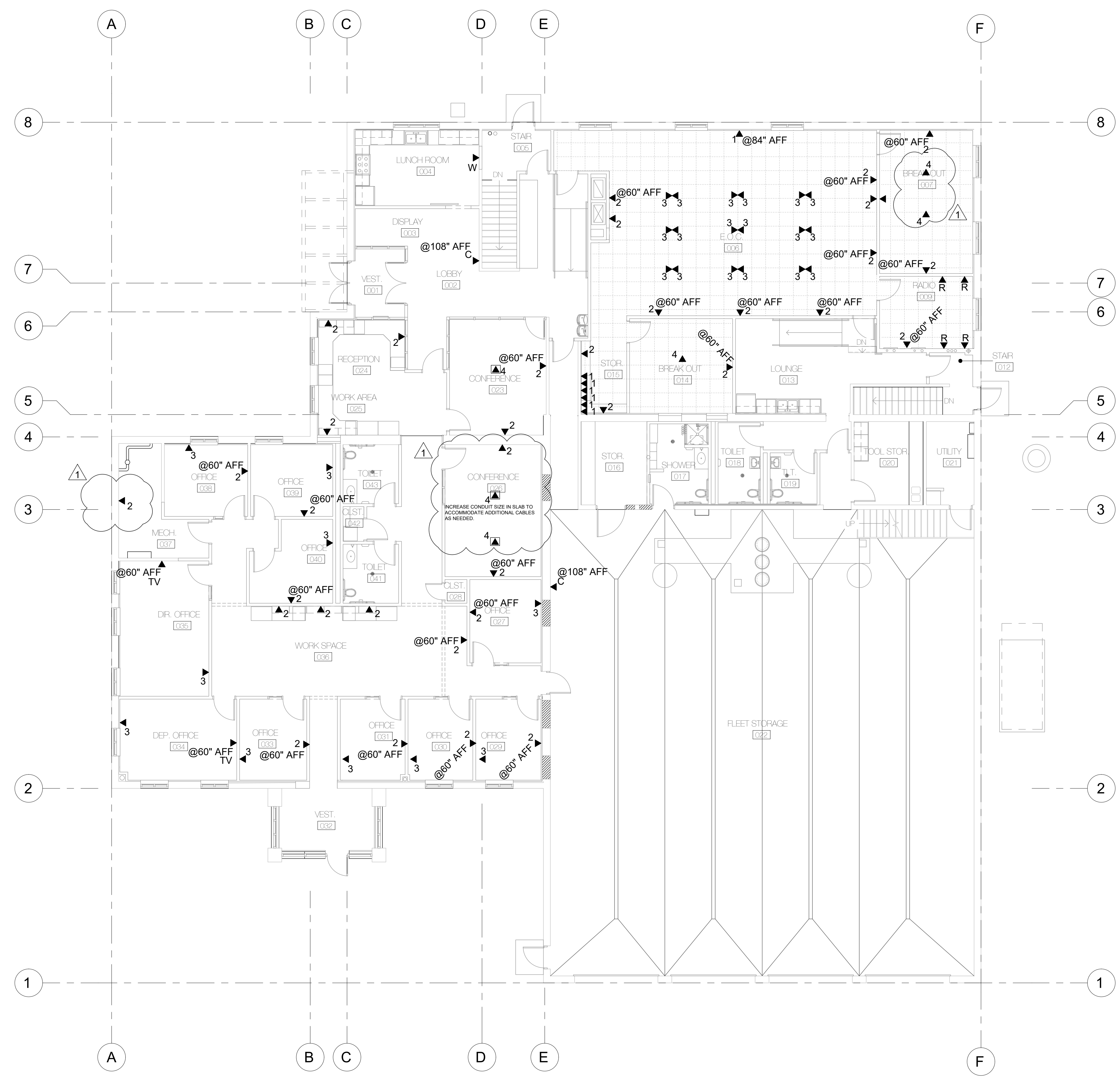
ISSUE RECORD

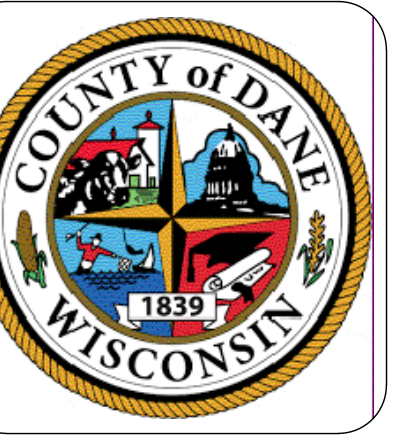
NO.	DESCRIPTION	DATE
1	ISSUE FOR BD	06-04-21
Δ	ADDENDUM #1	07-14-21

CHECKED BY
TFT
DRAWN BY
SENTINEL
DATE
01-04-21
PROJECT NUMBER
2020-001

FIRST FLOOR
COMMUNICATIONS
PLAN

T1.0





DANE COUNTY EMERGENCY
 MANAGEMENT REMODEL
 5415 KING JAMES WAY
 FITCHBURG, WISCONSIN

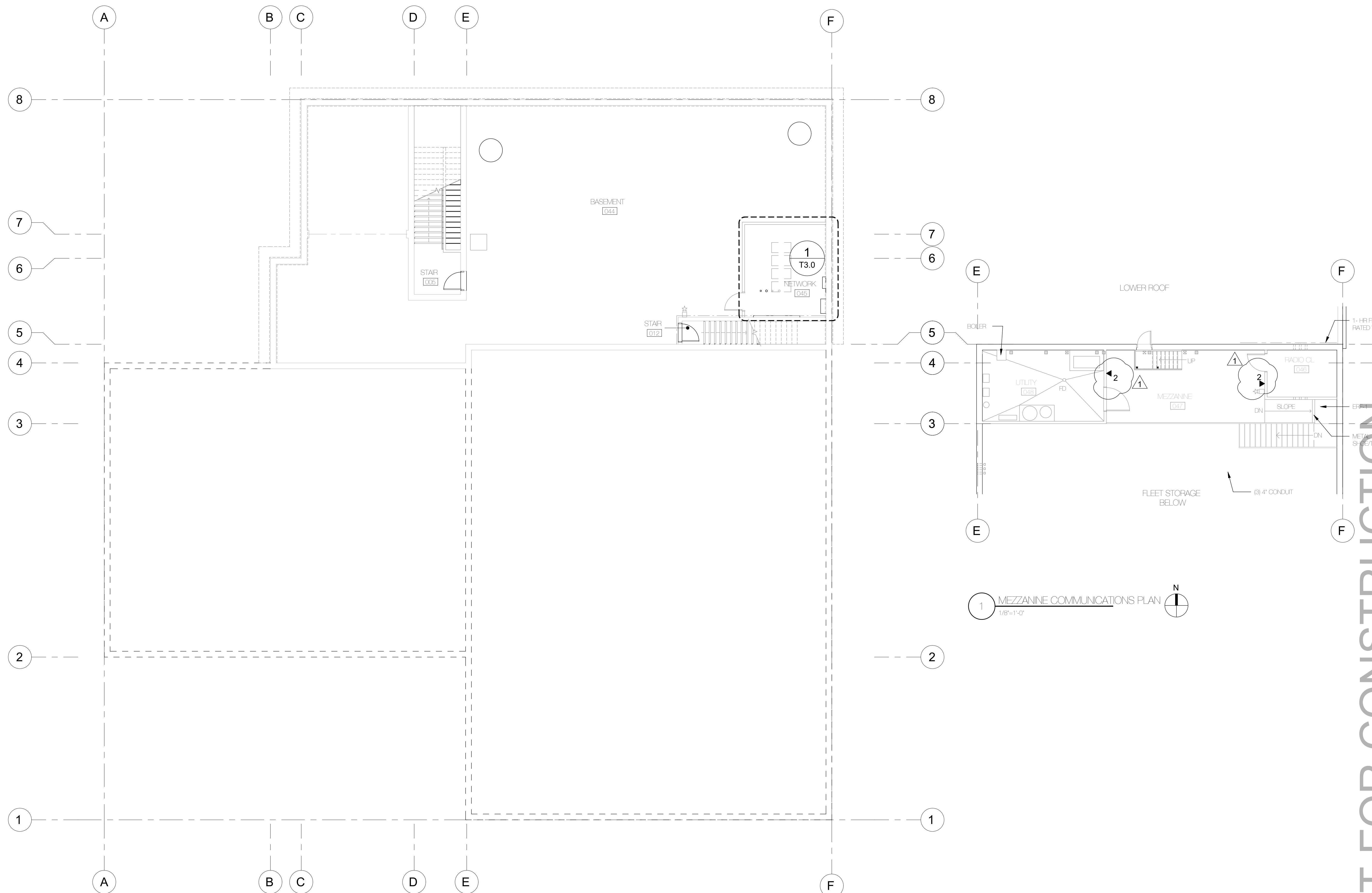
ISSUE RECORD

NO.	DESCRIPTION	DATE
1	ISSUE FOR BD	09-04-21
Δ	ADDENDUM #1	07-14-21

CHECKED BY
 TFI
 DRAWN BY
 SENTINEL
 DATE
 01-04-21
 PROJECT NUMBER
 2020-001

BASEMENT &
 MEZZANINE
 COMMUNICATION
 PLAN

T1.1



1 MEZZANINE COMMUNICATIONS PLAN
 1/8"=1'-0"

1 BASEMENT COMMUNICATIONS PLAN
 1/8"=1'-0"

SENTINEL
 2550 WARRENVILLE ROAD
 DOWNERS GROVE, ILLINOIS 60515
 630.769.4300
 www.sentinel.com

Bicsi
 REGISTERED COMMUNICATIONS DESIGNER
 EXPIRES 12/31/23
 Regis. No. 119867

NOT FOR CONSTRUCTION



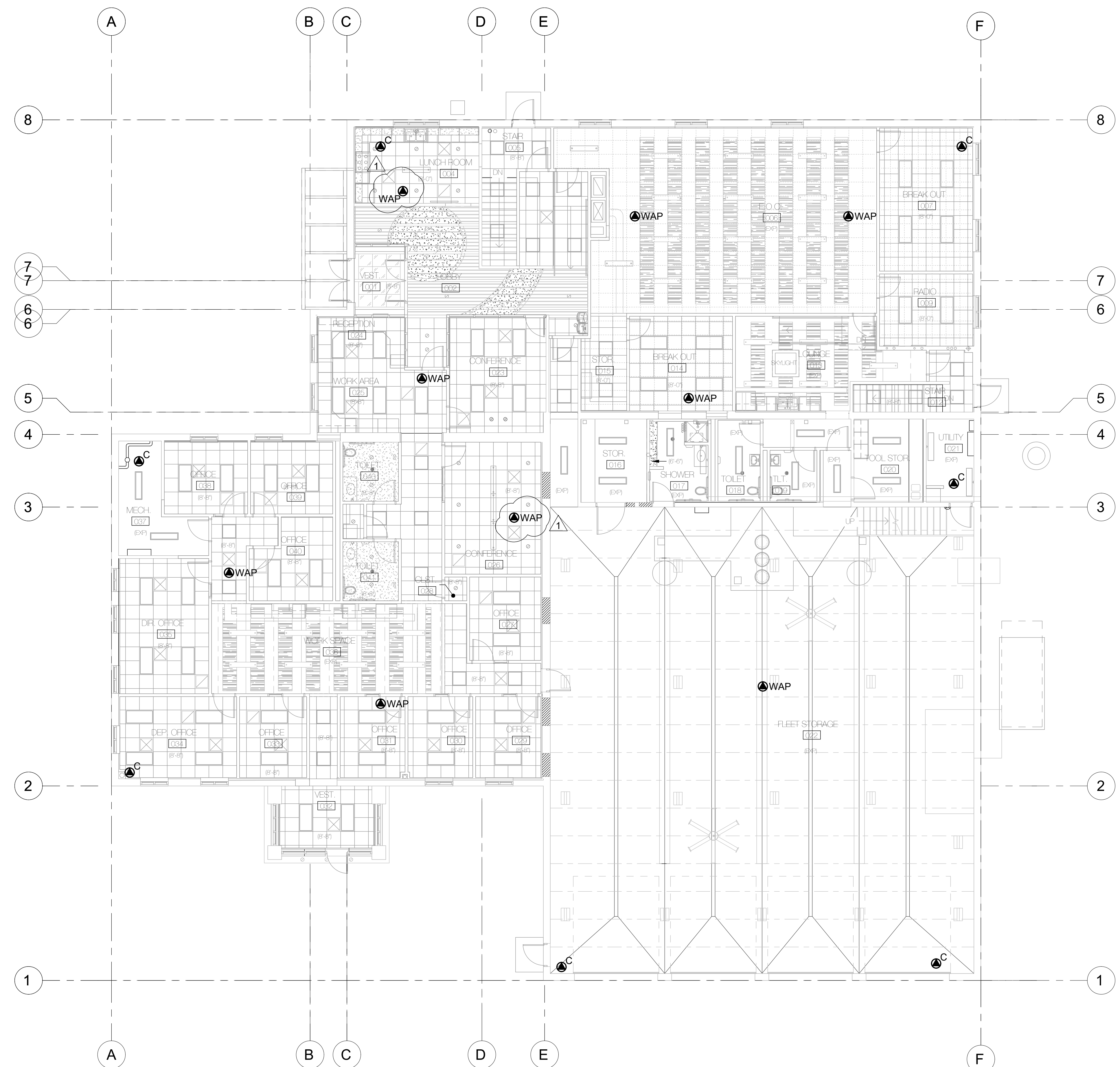
DANE COUNTY EMERGENCY
 MANAGEMENT REMODEL
 541.5 KING JAVES WAY
 FITCHBURG, WISCONSIN

ISSUE RECORD

NO.	DESCRIPTION	DATE
1	ISSUE FOR BD	06-04-21
Δ	ADDENDUM #1	07-14-21

CHECKED BY _____
 TFI
 DRAWN BY _____
 SENTINEL
 DATE _____
 01-04-21
 PROJECT NUMBER _____
 2020-001

FIRST FLOOR
 COMMUNICATIONS
 REFLECTED
 CEILING PLAN
 T2.0



1 REFLECTED CEILING COMMUNICATIONS PLAN
 1/8"=1'-0"

NOT FOR CONSTRUCTION