



General Engineering Company

P.O. Box 340 • 916 Silver Lake Dr. • Portage, WI 53901
608-742-2169 (Office) • 608-742-2592 (Fax)

www.generalengineering.net

This document contains confidential or proprietary information of General Engineering Company Inc. Neither this document nor its contents are to be distributed or disclosed either in whole or in part except as specifically authorized by General Engineering Company Inc.

TITLE SHEET
PARK SHELTER - 22' X 33'
Dane County Dept. of Public Works
DANE COUNTY, WI

NO.	BY	DATE

As indicated
FULL SIZE SCALE

DRAWN BY	CJK
DATE	MAY 2013
GEC FILE NO.	2-0313-101
SHEET NO.	G1.0



ARCHITECTURAL LEGEND

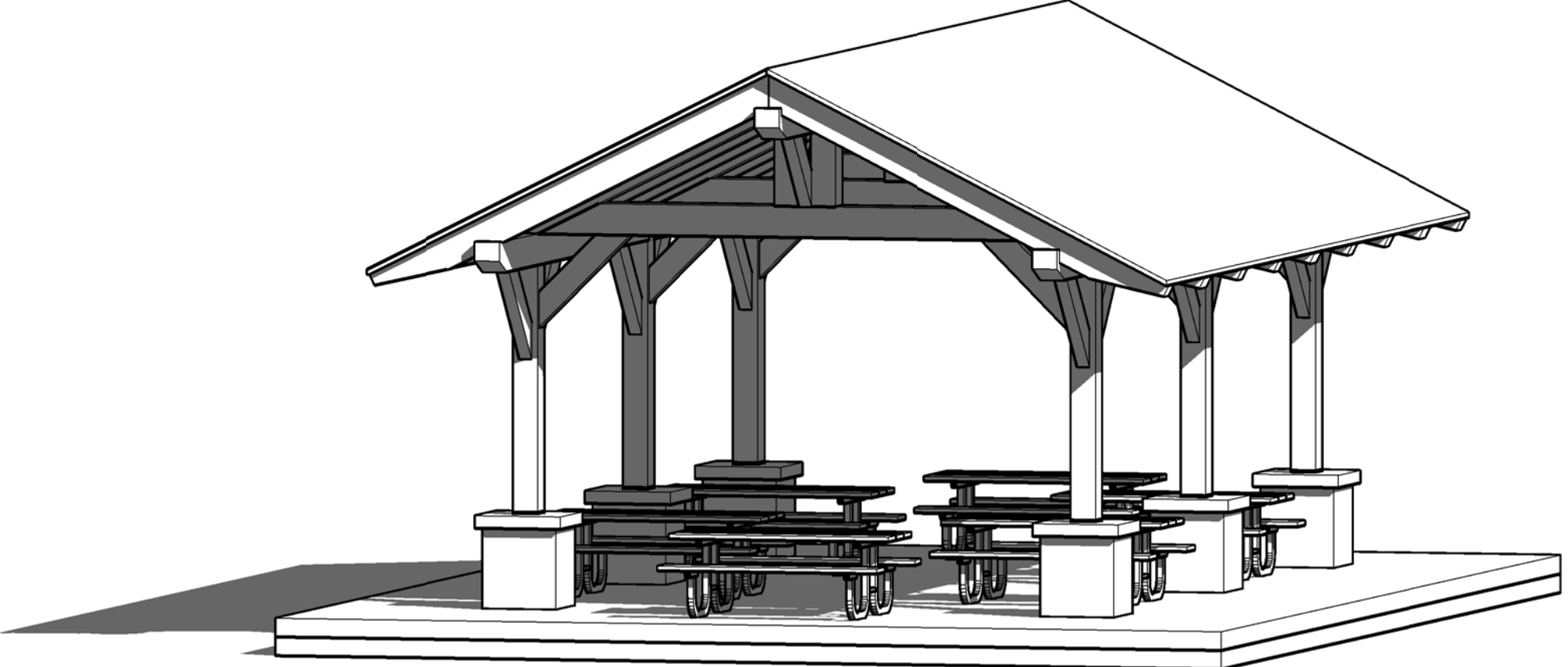
	SECTION NO. SHEET NO.	BUILDING SECTION
	SECTION NO. SHEET NO.	WALL SECTION
	DETAIL NO. SHEET NO.	ENLARGED DETAIL
	DETAIL NO. SHEET NO.	ELEVATION DETAIL
	LABEL NO.	WINDOW LABEL
	LABEL NO.	WALL LABEL
	LABEL NO.	DOOR LABEL
	DETAIL NO. TITLE PAGE SCALE AS SHOWN	SHEET TITLE
	ROOM LABEL ROOM NO.	ROOM LABEL
	ROOM DIM.	ROOM DIM.
	VERTICAL ELEV. DROP CLG.	VERTICAL ELEV.
	COMBO EXIT SIGN & EMERGENCY LIGHT	COMBO EXIT SIGN & EMERGENCY LIGHT
	EMERGENCY LIGHT	EMERGENCY LIGHT
	EXIT DIRECTION	EXIT SIGN
	*FE	FIRE EXTINGUISHER

CIVIL LEGEND

	EXISTING MANHOLE
	PROPOSED MANHOLE
	EXISTING HYDRANT
	PROPOSED HYDRANT
	VALVE
	CURB STOP
	WELL
	PROPERTY CORNER
	LIGHT POLE
	POWER/TELEPHONE POLE GUY WIRE
	UTILITY PEDESTAL
	SIGN
	SOIL BORING
	MONITORING WELL
	MAILBOX
	POTENTIAL HAZARD
	BENCH MARK
	DECIDUOUS TREE
	CONIFEROUS TREE
	ACCESSIBILITY SYMBOL

DIGGERS HOTLINE NOTE
To Obtain Location of Participants Underground Facilities Before You Dig in Wisconsin
CALL DIGGERS HOTLINE
1-800-242-8511
Wis Statute 182.0175 (1974)
Requires Min. 3 Work Days Notice Before You Excavate

DANE COUNTY PARKS
TIMBER SHELTER - 22' X 33'
DANE COUNTY, WI
MAY 2013



BUILDING DESIGN CRITERIA

- CODE COMPLIANCE PER 2011 WISCONSIN COMMERCIAL BUILDING CODE (WCBC) (2009 I - CODES)
- OCCUPANCY TYPE
A-5 - OUTSIDE ASSEMBLY
- CONSTRUCTION CLASSIFICATION - VB
WOOD FRAMED UNPROTECTED
- ALLOWABLE AREA
UNLIMITED (TABLE 503)
- OCCUPANT LOAD
48 - TOTAL
- BUILDING IS NOT PROTECTED WITH A COMPLETE NFPA 13 FIRE SPRINKLER SYSTEM

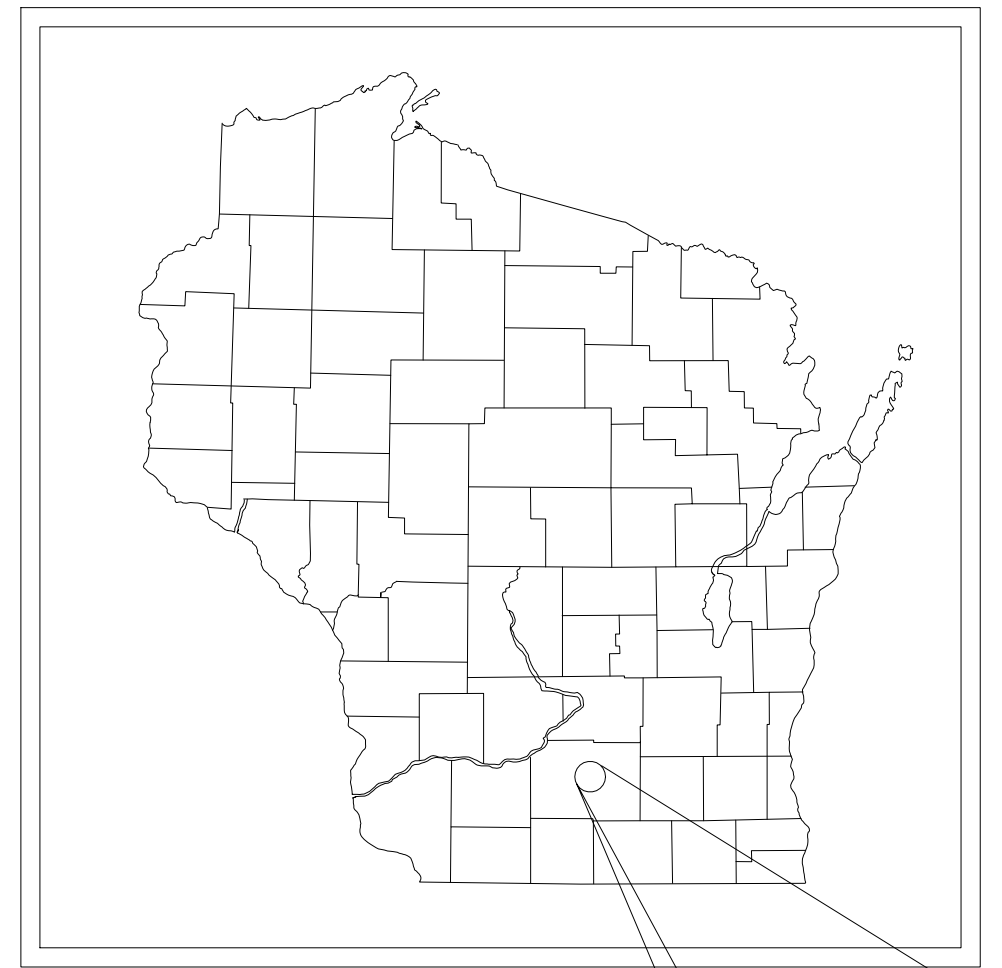
ABBREVIATIONS

EOP = EDGE OF PAVEMENT	MFG. = MANUFACTURER
BOC = BACK OF CURB	DIM. = DIMENSION
EOSW = EDGE OF SIDEWALK	SPF = SPRUCE PINE FUR
TOF = TOP OF FOOTING	DF = DOUGLAS FIR
FFE = FIRST FLOOR ELEVATION	SP = SOUTHERN PINE
TOW = TOP OF WALL	CONC. = CONCRETE
SFE = SECOND FLOOR ELEVATION	WWF = WIRE WELDED FABRIC
ELEV. = ELEVATION	OC = ON CENTER
RO = ROUGH OPENING	EW = EACH WAY
BM = BENCHMARK	EF = EACH FACE
SQ. FT. = SQUARE FEET	WH = WATER HEATER
DIA. = DIAMETER	DW = DISHWASHER
TYP. = TYPICAL	REF. = REFRIGERATOR
HM = HOLLOW METAL	FRZ. = FREEZER
SS = STAINLESS STEEL	FTG. = FOOTING
ALUM. = ALUMINUM	PC = PRECAST
IBC = INTERNATIONAL BUILDING CODE	OHD = OVERHEAD DOOR
WD = WOOD	T/O = TOP OF
MTL. = METAL	GALV. = GALVANIZED
HSS = HOLLOW STEEL STRUCTURE	BRG. = BEARING
STL. = STEEL	OH = OVERHANG
OFOW - OWNER FURNISHED OWNER INSTALLED	

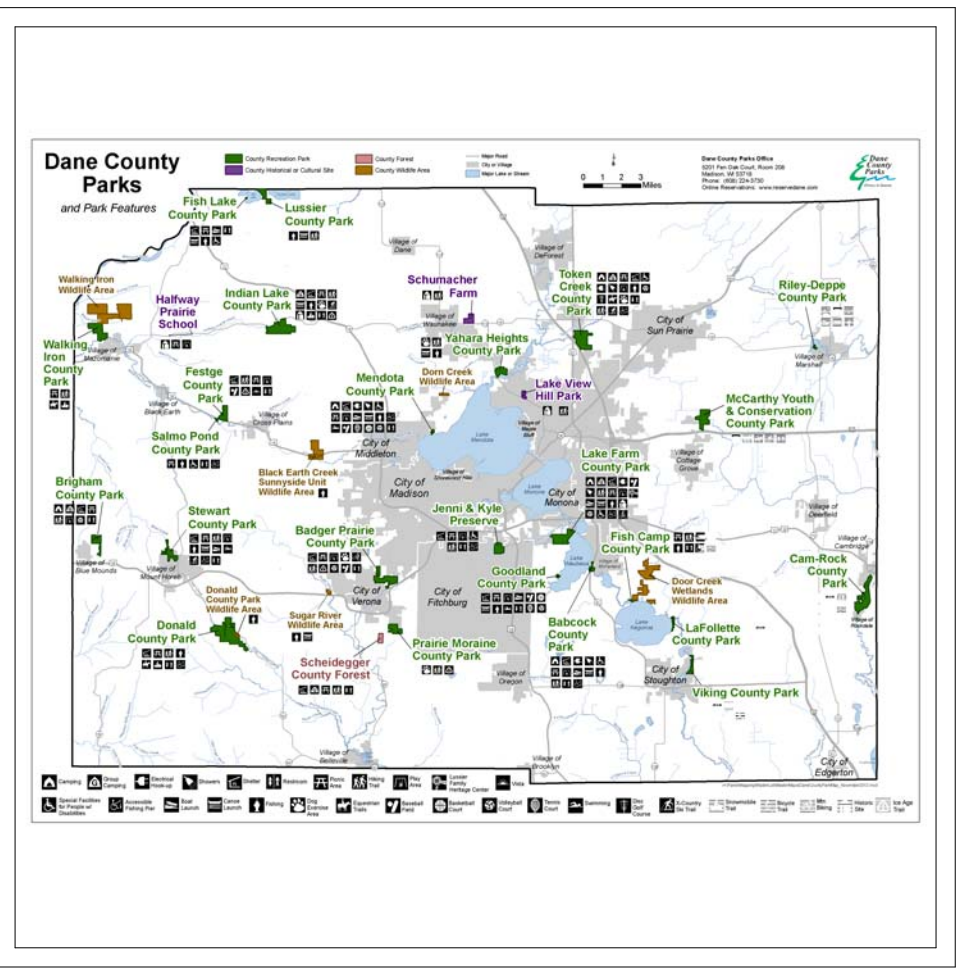
SEAL

INDEX OF DRAWINGS

SHEET NO.	DESCRIPTION
GENERAL -	
G1.0	TITLE SHEET
CIVIL -	
C1.0	SITE PLAN
STRUCTURAL -	
S0.0	STRUCTURAL NOTES
S1.0	FOUNDATION PLAN
ARCHITECTURAL -	
A1.0	FIRST FLOOR PLAN
A2.0	EXTERIOR ELEVATIONS
A3.0	BUILDING SECTIONS & DETAILS
A3.1	TRUSS & COLUMN DETAILS
A3.2	MISC. DETAILS
A4.0	PERSPECTIVE VIEW
ELECTRICAL -	
E1.0	ELECTRICAL PLAN



LOCATION PLAN
DANE COUNTY, WI
PROJECT LOCATION



LOCATION PLAN
DANE COUNTY, WI
PROJECT LOCATION

G:\Current Files A\DiDane County Dept of Public Works - 2-0313-101\CAD 2-0313-101_Architectural\FP_2-0313-101 (Small Shelter).ind



General Engineering Company

P.O. Box 340 • 916 Silver Lake Dr. • Portage, WI 53901
608-742-2169 (Office) • 608-742-2592 (Fax)

www.generalengineering.net

This document contains confidential or proprietary information of General Engineering Company Inc. Neither this document nor its contents are to be distributed, copied, or disclosed either in whole or in part except as specifically authorized by General Engineering Company Inc.

STRUCTURAL NOTES

PARK SHELTER - 22' X 33'

Dane County Dept. of Public Works

DANE COUNTY, WI

REVISIONS	NO.	BY	DATE

As indicated
FULL SIZE SCALE

DRAWN BY	CJK
DATE	MAY 2013
GEC FILE NO.	2-0313-101
SHEET NO.	

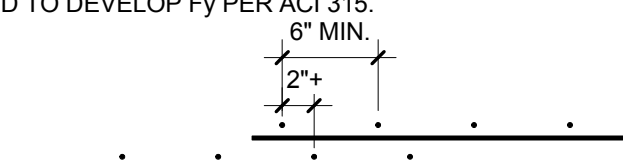
S0.0

PIER SCHEDULE						
MARK	DIMENSIONS			REINFORCEMENT	TOP OF ELEV	REMARKS
	WIDTH	LENGTH	DEPTH			
P1	16"	16"	60"	4- #5 VERTICAL w/ #3 TIES @ 12" O.C.	+2'2"	
P2						

NOTE: PRIOR TO CONSTRUCTION CONTRACTOR TO VERIFY PIER SIZES WITH METAL BUILDING MFG'S BASE PLATE AND ANCHOR BOLT LAYOUTS

FOOTING SCHEDULE						
MARK	DIMENSIONS			REINFORCEMENT (W)- SPAN WIDTH (L)- SPAN LENGTH	TOP OF ELEV	REMARKS
	WIDTH	LENGTH	DEPTH			
F1						
F2						
F3						
F4						
F5						
F6						
F7						
F8						
F9						
F10						
F11						
F12						

CONCRETE REINFORCEMENT NOTES:

- REINFORCING SHALL BE DETAILED IN ACCORDANCE WITH ACI 315 MANUAL OF STANDARD PRACTICE FOR DETAILED REINFORCED CONCRETE STRUCTURES (MOST CURRENTLY ADOPTED EDITION).
 - PROVIDE MINIMUM COVER PER ACI 318, 7.7.1 ALSO SEE MILD STEEL PROTECTION NOTES.
 - WIRE SPACERS, CHAIRS, TIES, ETC. FOR SUPPORT OF STEEL REINFORCING SHALL BE PROVIDED BY THE CONCRETE CONTRACTOR TO ENSURE REINFORCING IS PLACED AND MAINTAINED IN THE PROPER POSITION DURING CONCRETE PLACEMENT.
 - ALL HOOKS IN STEEL REINFORCING SHALL BE ACI STANDARD HOOKS.
 - TERMINATE NON-CONTINUOUS STEEL REINFORCING WITH AN ACI STANDARD HOOK IF REQUIRED EMBEDMENT SHOWN ON DRAWINGS CANNOT BE OBTAINED.
 - ALL LAPS SHALL BE CLASS "B" PER ACI 318 ON THE DESIGN DRAWINGS, OR UNLESS THE DETAILER TAKES SPECIAL CARE TO PROVIDE STAGGERED LAPS. USE TO BAR LENGTHS FOR ALL HORIZONTAL WALL BARS AND FOR TOP BARS IN SLABS AND BEAMS OVER 12" DEEP.
 - STEEL REINFORCING SPLICES OF ADJACENT BARS SHALL BE STAGGERED SUCH THAT SPLICES ARE 4 FEET APART, MINIMUM.
 - CORNER BARS WITH CLASS "B" LAP PER ACI 318 SHALL BE PROVIDED AT ALL WALL CORNERS AND AND INTERSECTIONS.
 - WELDED WIRE REINFORCING SHALL BE IN FLAT SHEETS ONLY AND SHALL BE LAPPED AND/OR ANCHORED TO DEVELOP Fy PER ACI 315.
- 
- WELDING OF STEEL REINFORCEMENT IS NOT PERMITTED, UNLESS APPROVED BY ENGINEER.

MILD REINFORCING STEEL PROTECTION NOTES:

THE FOLLOWING MINIMUM DIMENSIONS SHALL BE PROVIDED AS A CLEAR COVER FOR REINFORCING BARS IN STRUCTURAL MEMBERS:

CONCRETE CAST AGAINST EARTH AND PERMANENTLY EXPOSED TO EARTH:

FOOTINGS 3"

CONCRETE PERMANENTLY EXPOSED TO EARTH OR WEATHER:

WALLS, COLUMNS, PIERS:

UP THROUGH #5 BARS 1-1/2"

#6 THROUGH #18 BARS 2"

CONCRETE NOT EXPOSED TO EARTH OR WEATHER:

WALLS:

UP THROUGH #11 BARS 3/4"

#14 AND #18 BARS 1-1/2"

COLUMNS / PIERS:

SIDES 1-1/2"

MATERIAL DESIGN PROPERTIES:

CONCRETE PROPERTIES:

USE	28 DAY STRENGTH	MIN. H2O /CEMENT RATIO	SLUMP (INCHES)	MAX. AGGREGATE SZ.
INTERIOR FLOORS	3,500 PSI	.62	3 ±1	3/4
WALLS	3,500 PSI	.62	3 ±1	3/4
PIERS	3,500 PSI	.62	3 ±1	3/4
FOOTINGS	3,500 PSI	.62	3 ±1	1-1/2
EXTERIOR FLOORS	4,000 PSI	.48	3 ±1	3/4

REINFORCING STEEL STRENGTHS:

BARS (ASTM A615, GRADE 60) fy = 60,000 PSI
WELDED WIRE MESH (ASTM A 185) fy = 65,000 PSI

STRUCTURAL STEEL STRENGTHS:

STEEL SUPPLIED BY METAL BUILDING MANUFACTURER PER MTL BLDG SPECS

OTHER:
W SHAPES (ASTM A992, GR50) fy = 50,000 PSI
ANGLES, CHANNELS, PLATES, & BARS (ASTM A36) fy = 36,000 PSI
SQUARE & RECTANGULAR TS OR HSS SECTIONS (ASTM A500, GR B) fy = 42,000 PSI
HIGH STRENGTH BOLTS (ASTM A325)

MISCELLANEOUS STRUCTURAL NOTES:

- ENGINEER ASSUMES PIN BASED COLUMNS.
- CONNECTORS:
 - FOR EXTERIOR AND INTERIOR APPLICATIONS WHERE EXPOSED TO MOISTURE, WHERE PRESSURE TREATED WOOD IS USED, AND FOR INTERIOR CORROSIVE ENVIRONMENTS ALL CONNECTORS SHALL BE HOT DIPPED GALVANIZED PER ASTM A 153A / 153M, OR STAINLESS STEEL, INCLUDING EXPANSION BOLTS, ANCHOR BOLTS, JOIST HANGERS, AND NAILS.
 - CONNECTION DESIGN TO WOOD OR STEEL FRAMING AND EVALUATION OF STRUCTURAL MEMBERS ADEQUACY BY A REGISTERED PROFESSIONAL ENGINEER SHALL BE PROVIDED BY ALL SUBCONTRACTORS.
 - INSTALLER OF ANCHORS OR CONNECTIONS TO STRUCTURE IS RESPONSIBLE FOR ANCHOR DESIGN AND DETERMINATION OF STRUCTURAL COMPONENT ADEQUACY. DO NOT CUT REINFORCING BARS OR DAMAGE OTHER EMBEDMENTS.

CONCRETE CAST-IN-PLACE NOTES:

- ALL WORK SHALL BE DONE IN ACCORDANCE WITH ACI 318 BUILDING CODE REQUIREMENTS FOR REINFORCED CONCRETE (MOST CURRENTLY ADOPTED EDITION).
- CONTRACTOR SHALL NOTIFY ENGINEER AT LEAST 48 HOURS PRIOR TO PLACING CONCRETE TO FACILITATE ON-SITE OBSERVATION OF REBAR.
- WHEN THE AVERAGE TEMPERATURE FROM MIDNIGHT IS EXPECTED TO DROP BELOW 40 DEGREES FAHRENHEIT FOR THREE SUCCESSIVE DAYS, COLD WEATHER CONCRETING REQUIREMENTS SHALL BE FOLLOWED, REFER TO ACI 308R.
- WHEN AMBIENT AIR OR CONCRETE TEMPERATURE EXCEEDS 90 DEGREES FAHRENHEIT, STEEL REINFORCING AND/OR FORMING SURFACES ARE ABOVE 120 DEGREES FAHRENHEIT, OR WHEN WIND VELOCITY, HUMIDITY, OR SOLAR RADIATION CREATE CONDITIONS OF ACCELERATED MOISTURE LOSS AND INCREASE RATE OF HYDRATION, HOT WEATHER CONCRETING REQUIREMENTS SHALL BE FOLLOWED, REFER TO ACI 305R.
- ALL CONCRETE SURFACES SHALL BE FORMED OR APPROVED BY THE ENGINEER.
- CONTROL JOINTS SHALL BE CUT IN SLAB-ON-GRADE CONSTRUCTION WITHIN 24 HOURS OF INITIAL POUR.
- PROVIDE ISOLATION JOINTS WHERE SLABS ABUT VERTICAL SURFACES AS SHOWN.
- SLEEVES, CONDUITS, OR PIPES THROUGH SLABS AND WALLS SHALL BE PLACED AT THREE DIAMETERS O/C, OR 4" MINIMUM.
- ALUMINUM CONDUIT OR PIPING SHALL NOT BE CAST IN CONCRETE.

STRUCTURAL DESIGN DATA:

DESIGN CODE:

2011 WISCONSIN ENROLLED COMMERCIAL BUILDING CODE (2009 IBC)

SOIL LOAD:

ALLOWABLE NET SOIL BEARING PRESSURE (ASSUMED) 2,000 PSF
SOILS REPORT AVAILABLE NO

SEISMIC LOAD:

SEISMIC USE GROUP / OCCUPANCY CATEGORY II
SEISMIC LOAD IMPORTANCE FACTOR (Ie) 1.0
SEISMIC SITE CLASS D (ASSUMED)
MAPPED SPECTRAL RESPONSE ACCELERATION (Ss) 0.122
MAPPED SPECTRAL RESPONSE ACCELERATION (S1) 0.048
SPECTRAL RESPONSE COEFFICIENT (Sds) 0.131
SPECTRAL RESPONSE COEFFICIENT (Sd1) 0.77
SEISMIC DESIGN CATEGORY A

WIND LOAD:

BASIC WIND SPEED 90 MPH
BUILDING OCCUPANCY CATEGORY II
WIND LOAD IMPORTANCE FACTOR (Iw) 1.0
WIND EXPOSURE C
INTERNAL PRESSURE COEFFICIENTS ± 0.18

ROOF DESIGN LOAD:

ROOF LIVE LOAD 25 PSF
ROOF DEAD LOAD 15 PSF
UNBALANCED LOAD:
WINDWARD 0 PSF
LEEWARD 30 PSF
DRIFT LOADS (SEE APPROPRIATE DIAGRAMS)

SNOW LOAD:

GROUND SNOW LOAD 30 PSF
SNOW EXPOSURE FACTOR (Ce) 1.0
SNOW IMPORTANCE FACTOR (Is) 1.0
THERMAL FACTOR (Ci) 1.2
OCCUPANCY CATEGORY II

* SEISMIC, WIND, AND SNOW LOAD CALCULATIONS AND DESIGN DATA SHALL BE PERFORMED AND SUPPLIED BY THE TRUSS MANUFACTURER.

FOUNDATION PLAN NOTES:

- REFER TO STRUCTURAL DETAIL PLAN SHEETS FOR MISCELLANEOUS DETAILS NOT INDICATED ON PLAN.
- NOTIFY ENGINEER OF ANY UNUSUAL SOIL CONDITIONS. ALL FOOTINGS SHALL REST ON UNDISTURBED ROCK OR SOIL EXCAVATIONS FOR FOOTINGS SHALL BE APPROVED BY ENGINEER PRIOR TO PLACEMENT OF CONCRETE.
- WHERE REQUIRED, REMOVE UNSUITABLE EXISTING SOILS BELOW FOOTINGS, SLABS-ON-GRADE, ETC. TO APPROVED BEARING SOIL. REPLACE WITH ENGINEERED FILL (COMPACTED TO 95% OF THE MODIFIED PROCTOR DENSITY) TO THE REQUIRED FOOTING BEARING ELEVATION. REVIEW SOIL REPORT, IF ANY. FILL MATERIAL SHALL HAVE A MINIMUM BEARING CAPACITY AS INDICATED IN THE STRUCTURAL DESIGN DATA SOIL LOAD INFORMATION ON SHEET S0.0. TYPE OF FILL MATERIAL AND PLACEMENT SHALL CONFORM TO SPECIFICATIONS UNDER THE DIRECTION AND SUPERVISION OF THE SOILS ENGINEER. SOILS ENGINEER SHALL FIELD VERIFY ALL BEARING CAPACITIES BEFORE FOOTINGS ARE POURED. CONTACT ENGINEER IF UNABLE TO ATTAIN LISTED SOIL BEARING PRESSURE.
- PROVIDE A MINIMUM OF 8 INCHES OF WELL COMPACTED GRANULAR FILL BELOW ALL SLABS ON GRADE. COMPACT TO 95% OF THE MODIFIED PROCTOR DENSITY.
- CONCRETE EXPOSED TO WEATHER (RETAINING WALLS, EXTERIOR SLABS, WALKS, CURBS, ETC. BUT EXCLUDING EXPOSED FOUNDATION WALLS) SHALL CONTAIN 4 TO 7 PERCENT AIR BY VOLUME.
- DELIVERY TICKETS FOR EACH LOAD OF CONCRETE DELIVERED TO THE JOB SITE SHALL BE FURNISHED UPON REQUEST TO THE ENGINEER. TICKET INFORMATION SHALL CONTAIN ALL PERTINENT DESIGN INFORMATION, INCLUDING AMOUNT OF WATER ADDED AT THE JOB SITE, IF ANY.
- FORMWORK FOR FOOTINGS SHALL CONSIST OF A MANUFACTURED FORM SYSTEM OR A MINIMUM 1-1/2" THICK WOOD PLANK SECURED TO WOOD OR STEEL STAKES. POURING TO EXCAVATION BANK MAY NOT BE DONE WITHOUT PRIOR APPROVAL OF THE ENGINEER.
- MIXING AND PLACING OF CONCRETE TO BE IN ACCORDANCE WITH ACI 318. CONCRETE SHALL BE DEPOSITED AS NEARLY AS PRACTICAL IN ITS FINAL POSITION TO AVOID SEGREGATION DUE TO REHANDLING OR FLOWING. CONCRETING SHALL BE CARRIED ON A SUCH A RATE THAT CONCRETE IS AT ALL TIMES PLASTIC AND FLOWS READILY INTO SPACES BETWEEN REINFORCEMENT. ALL CONCRETE SHALL BE THOROUGHLY CONSOLIDATED BY SUITABLE MEANS DURING PLACEMENT AND SHALL BE THOROUGHLY WORKED AROUND REINFORCEMENT AND EMBEDDED FIXTURES AND INTO CORNERS OF FORMS.



General Engineering Company

P.O. Box 340 • 916 Silver Lake Dr. • Portage, WI 53901
608-742-2169 (Office) • 608-742-2592 (Fax)
www.generalengineering.net

This document contains confidential or proprietary information of General Engineering Company Inc. Neither this document nor its contents are to be distributed or disclosed either in whole or in part except as specifically authorized by General Engineering Company Inc.

FOUNDATION PLAN

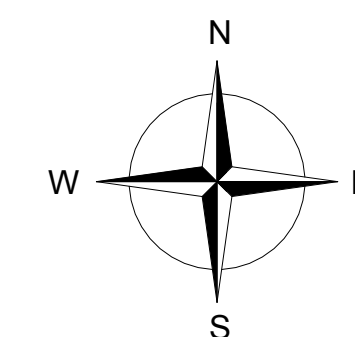
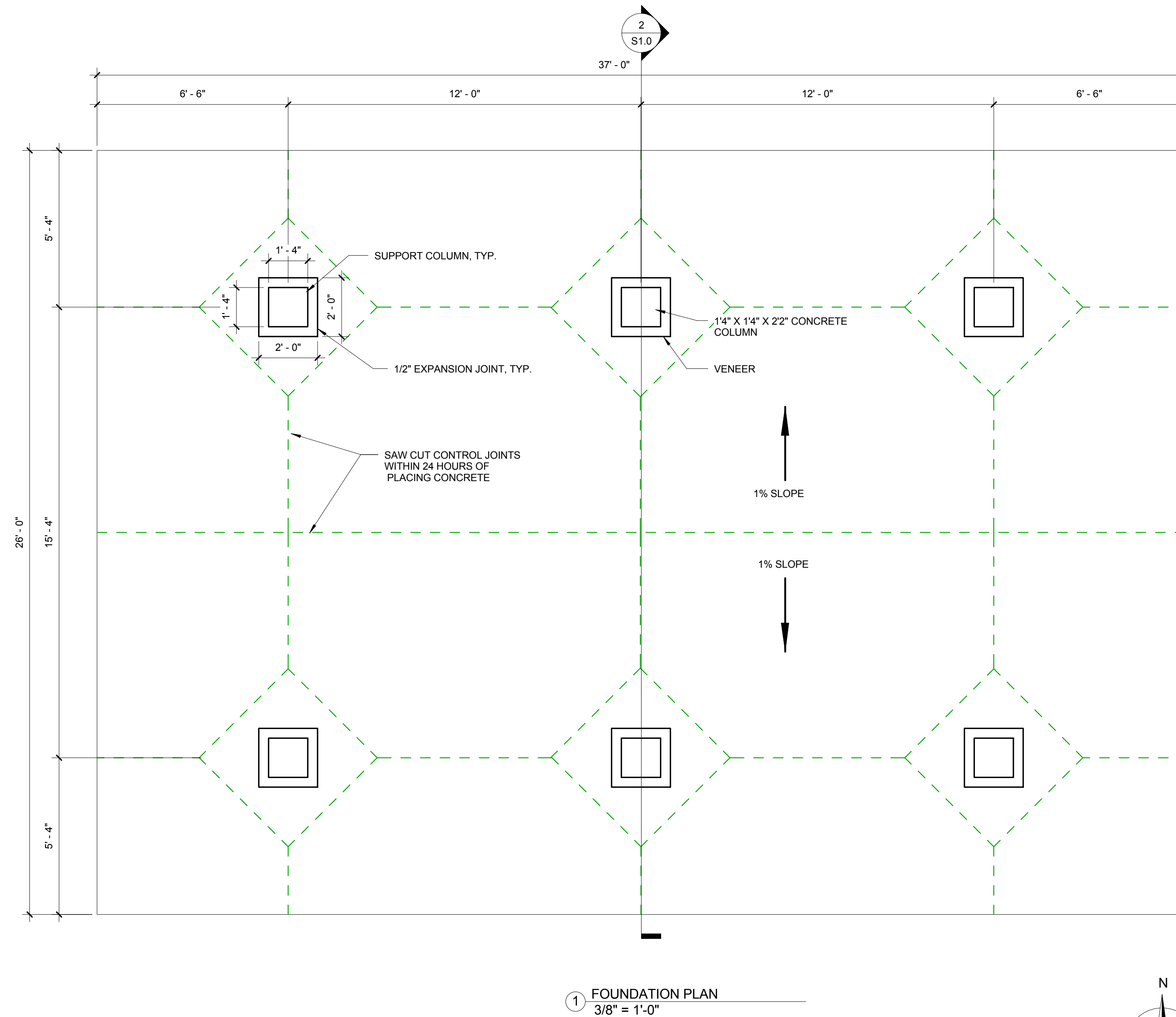
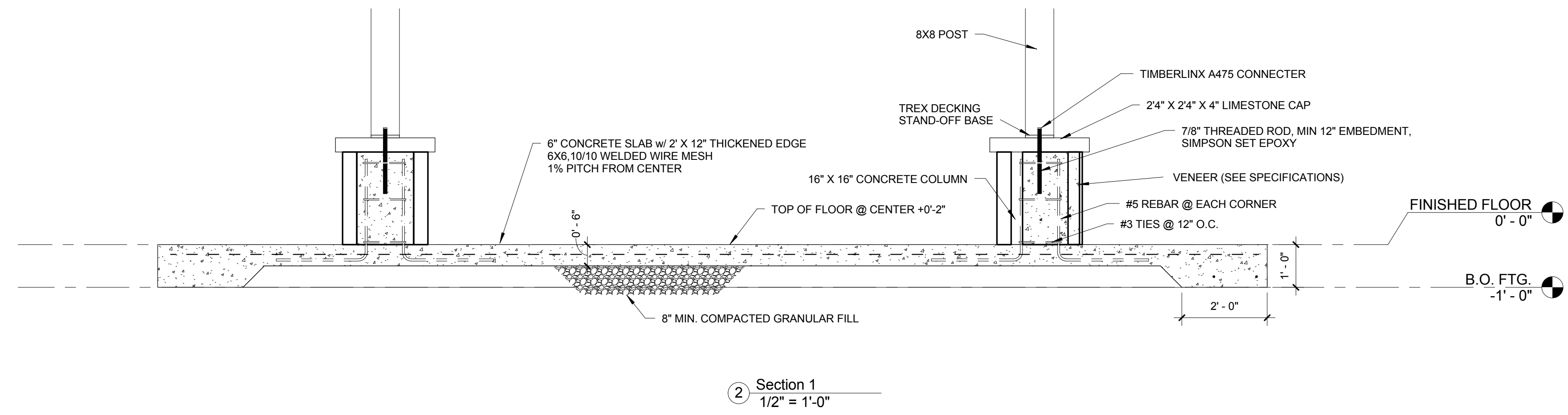
PARK SHELTER - 22' X 33'
Dane County Dept. of Public Works
DANE COUNTY, WI

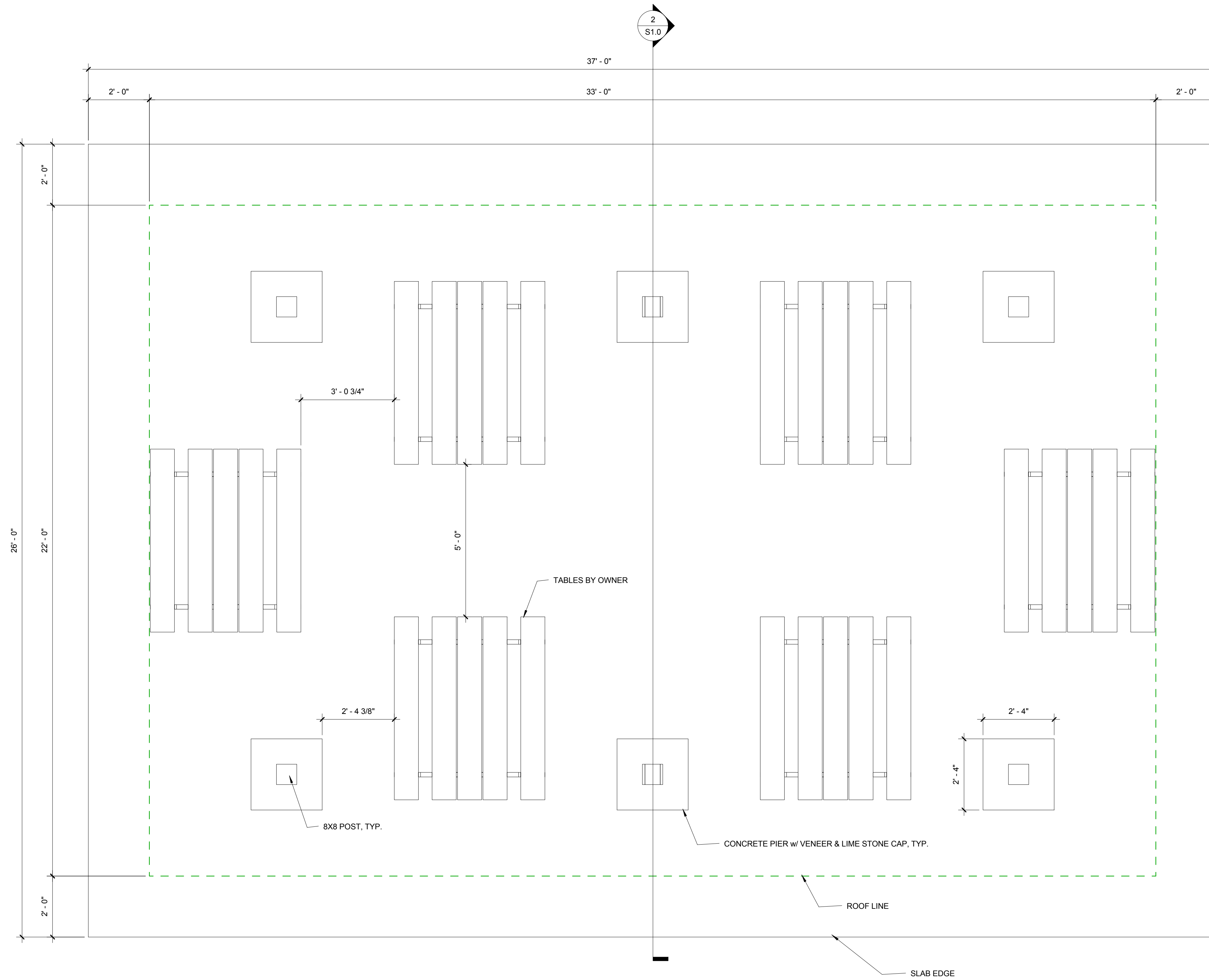
REVISIONS	NO.	BY	DATE

As indicated
FULL SIZE SCALE

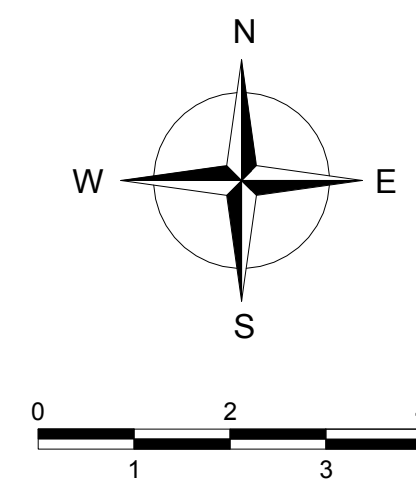
DRAWN BY: CJK
DATE: MAY 2013
GEC FILE NO.: 2-0313-101
SHEET NO.:

S1.0





1 FLOOR PLAN
1/2" = 1'-0"



General Engineering Company

P.O. Box 340 • 916 Silver Lake Dr. • Portage, WI 53901
608-742-2169 (Office) • 608-742-2592 (Fax)
www.generalengineering.net

This document contains confidential or proprietary information of General Engineering Company Inc. Neither this document nor its contents are to be distributed outside of the project or disclosed other than in whole or in part except as specifically authorized by General Engineering Company Inc.

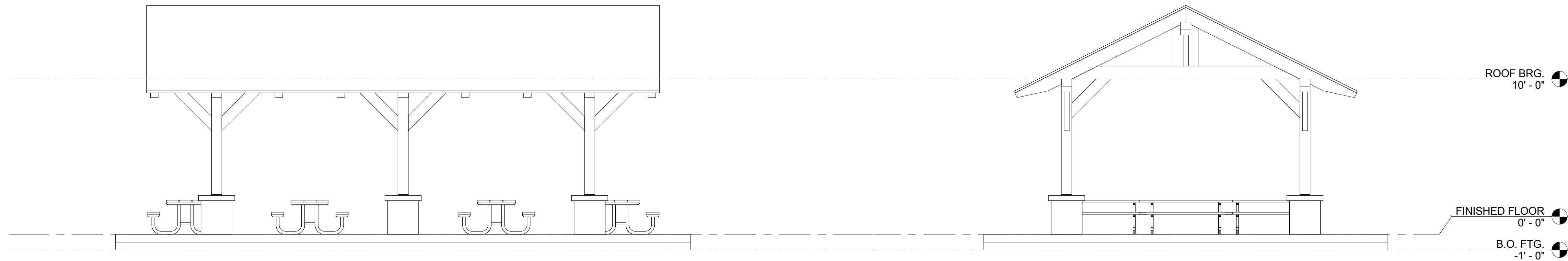
FIRST FLOOR PLAN
PARK SHELTER - 22' X 33'
Dane County Dept. of Public Works
DANE COUNTY, WI

REVISIONS	NO.	BY	DATE

As indicated
FULL SIZE SCALE

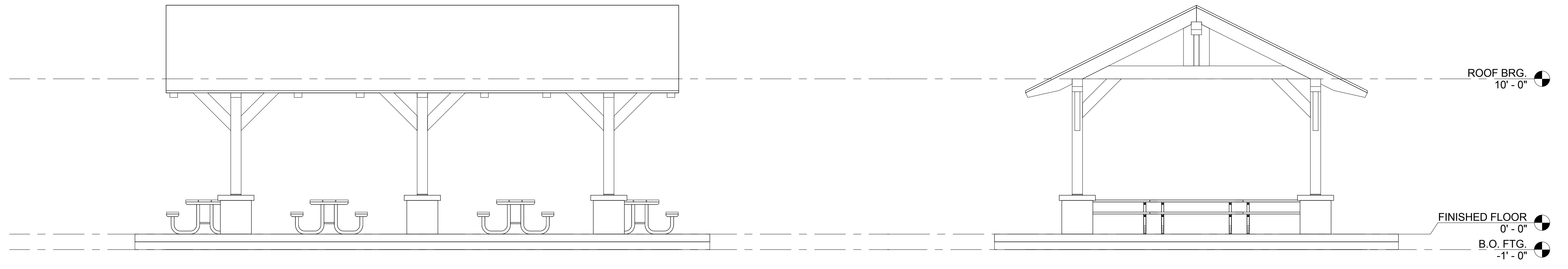
DRAWN BY: CJK
DATE: MAY 2013
GEC FILE NO.: 2-0313-101
SHEET NO.:

A1.0



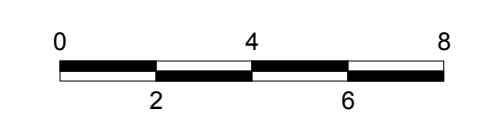
2 NORTH ELEVATION
1/4" = 1'-0"

1 EAST ELEVATION
1/4" = 1'-0"



3 SOUTH ELEVATION
1/4" = 1'-0"

4 WEST ELEVATION
1/4" = 1'-0"



General Engineering Company

P.O. Box 340 • 916 Silver Lake Dr. • Portage, WI 53901
608-742-2169 (Office) • 608-742-2592 (Fax)
www.generalengineering.net

This document contains confidential or proprietary information of General Engineering Company Inc. Neither this document nor its contents are to be distributed or disclosed either in whole or in part except as specifically authorized by General Engineering Company Inc.

EXTERIOR ELEVATIONS

PARK SHELTER - 22' X 33'

Dane County Dept. of Public Works

DANE COUNTY, WI

REVISIONS	NO.	BY	DATE

1/4" = 1'-0"
FULL SIZE SCALE

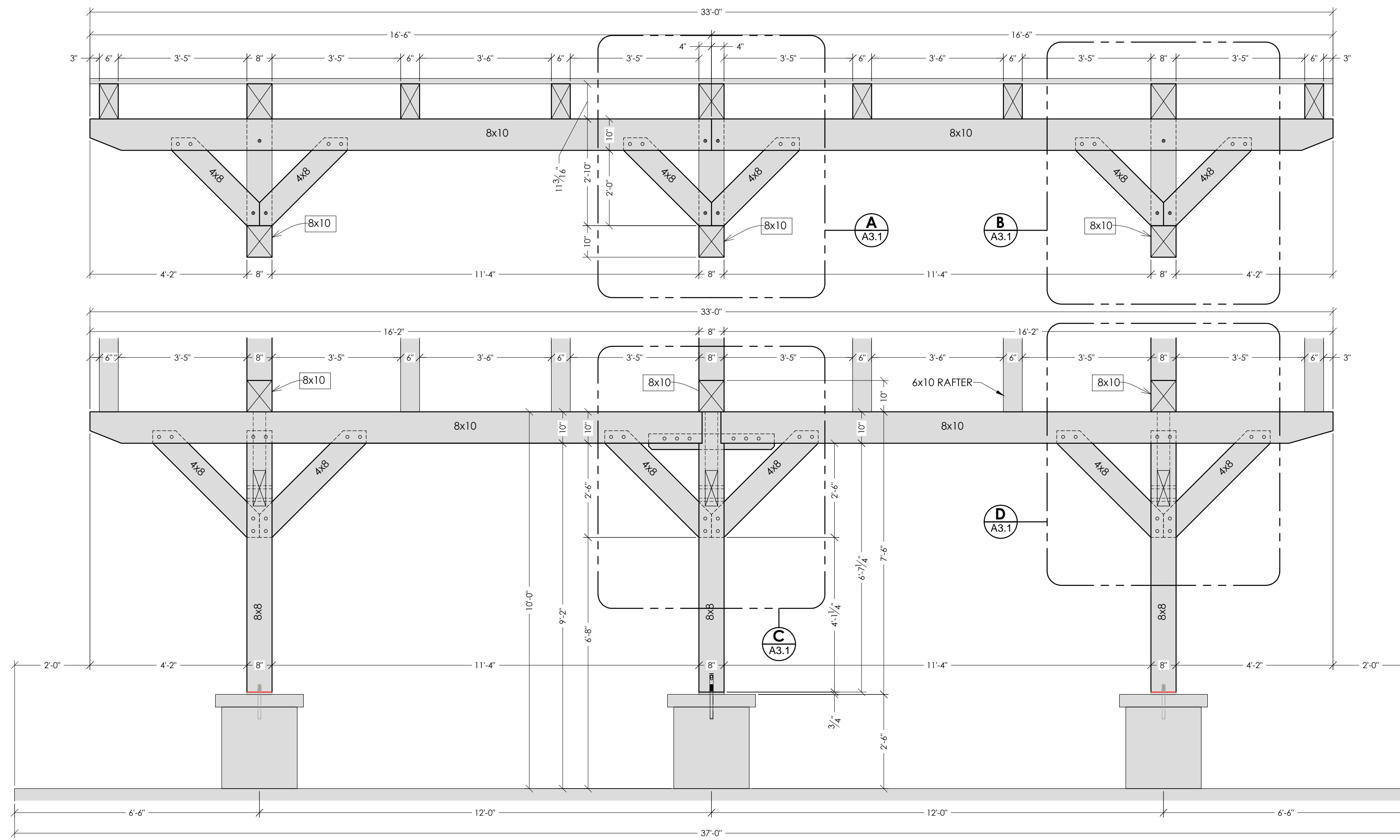
DRAWN BY: CJK

DATE: MAY 2013

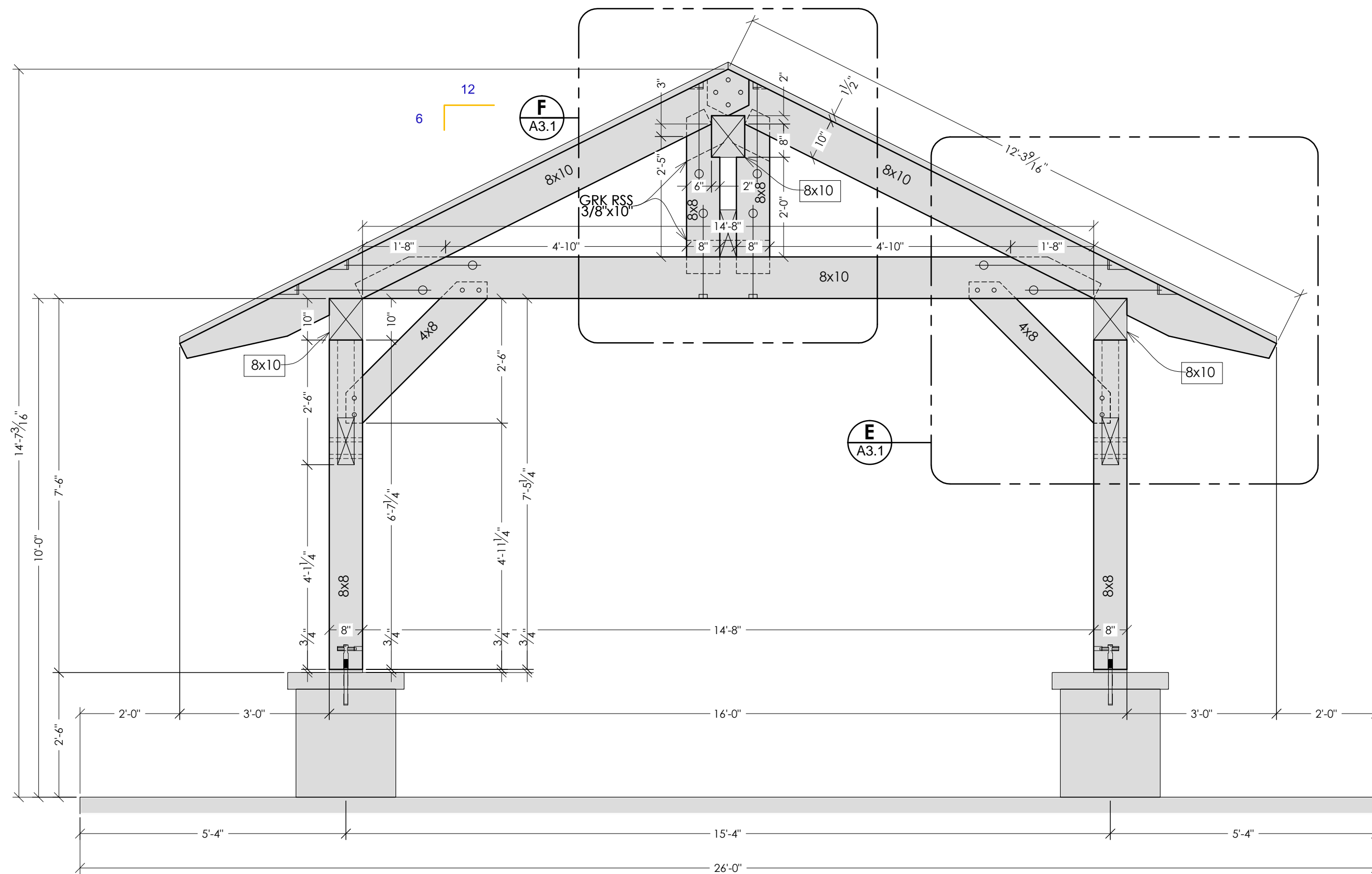
GEC FILE NO.: 2-0313-101

SHEET NO.:

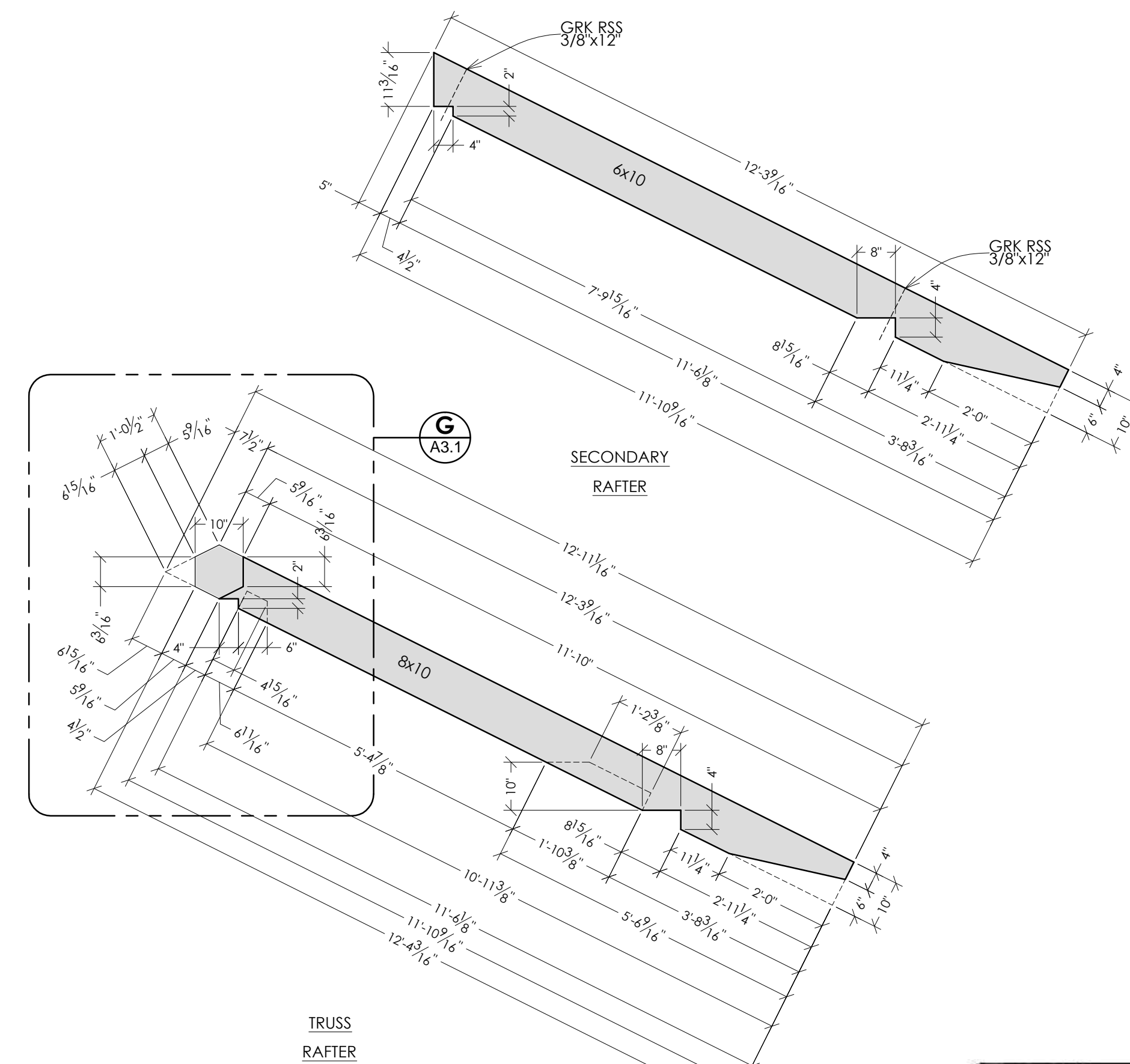
A2.0



1 COLUMN & RIDGE SECTION
SCALE: 1/2"=1'-0" (24"x36")



2 TRUSS SECTION
SCALE: 1/2"=1'-0" (24"x36")



3 RAFTER DETAILS
SCALE: 1/2"=1'-0" (24"x36")



General Engineering Company

P.O. Box 540 • 916 Silver Lake Dr. • Portage, WI 53901
608-742-2169 (Office) • 608-742-2592 (Fax)

www.generalengineering.net
This document contains confidential or proprietary information of General Engineering Company. It is to be used only for the project and location specified. No part of this document may be reproduced, stored in a retrieval system, or transmitted in any form or by any means, electronic, mechanical, photocopying, recording, or by any information storage and retrieval system, without the prior written permission of General Engineering Company.

BUILDING SECTIONS
Park Shelter - 22' x 33'

Dane County Dept. of Public Works
Dane County, WI

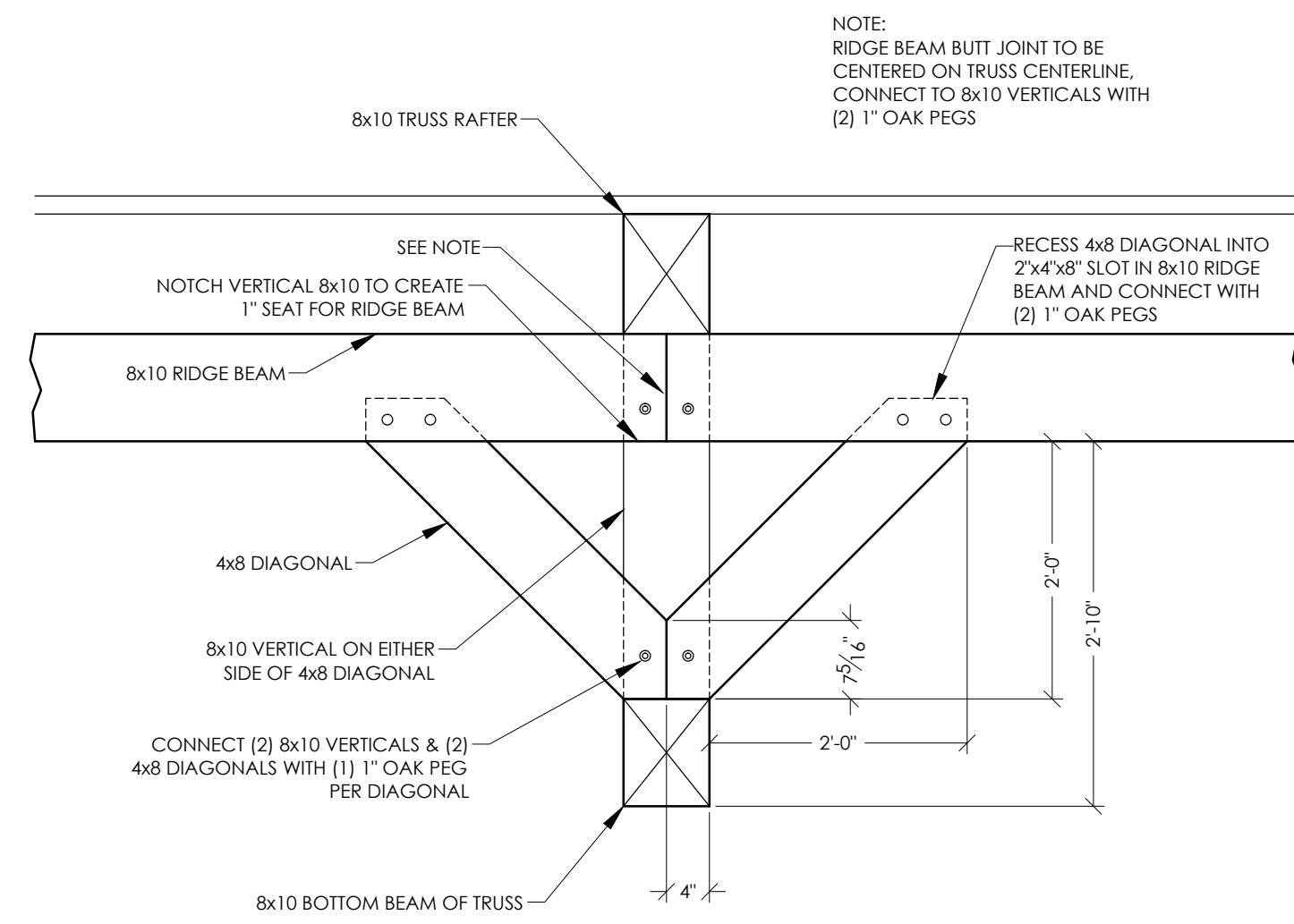
REVISIONS	NO.	BY	DATE

SCALE

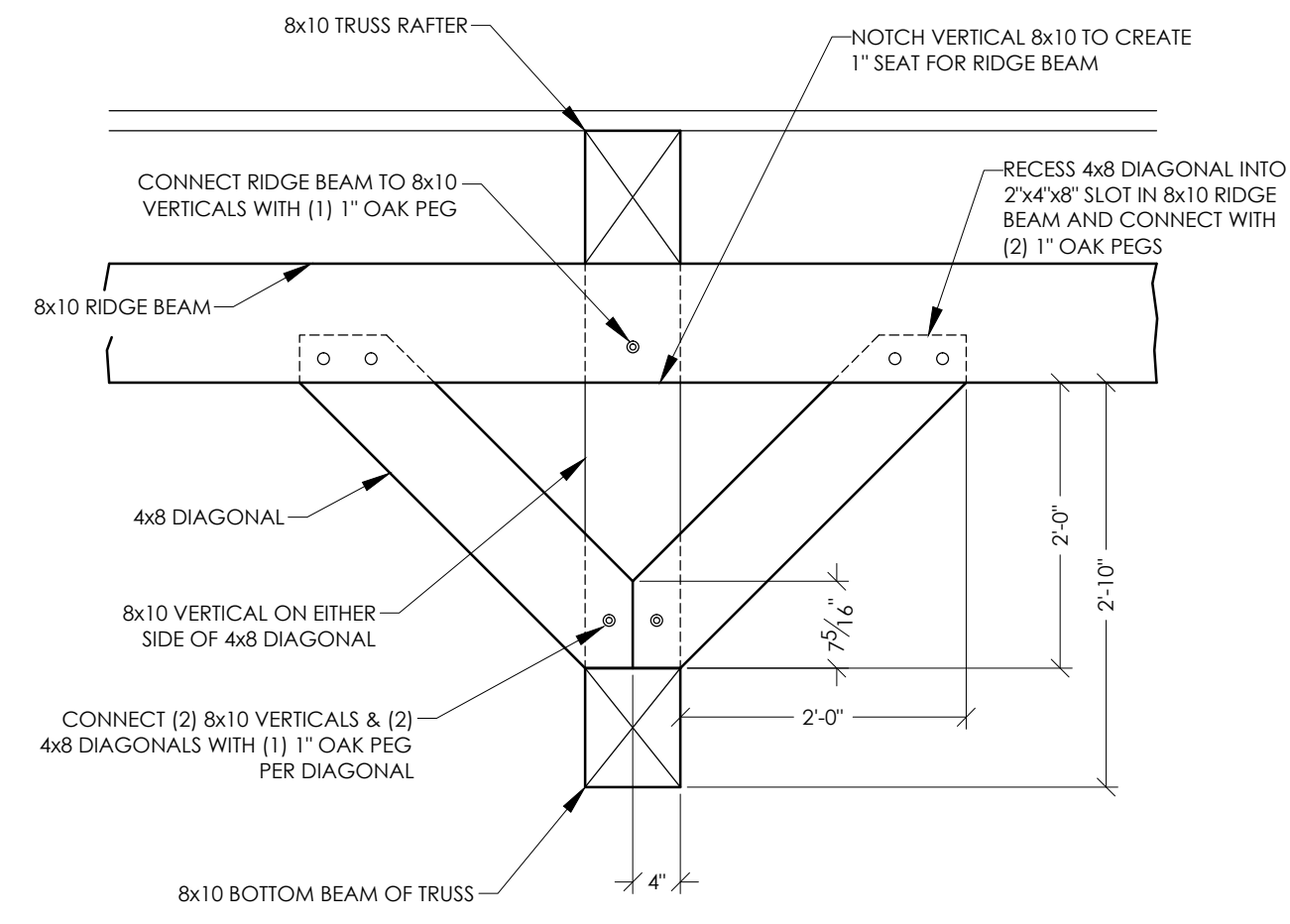
DRAWN BY: SRR
DATE: May 2013
GEC FILE NO. 2-0313-101
SHEET NO.

A3.0

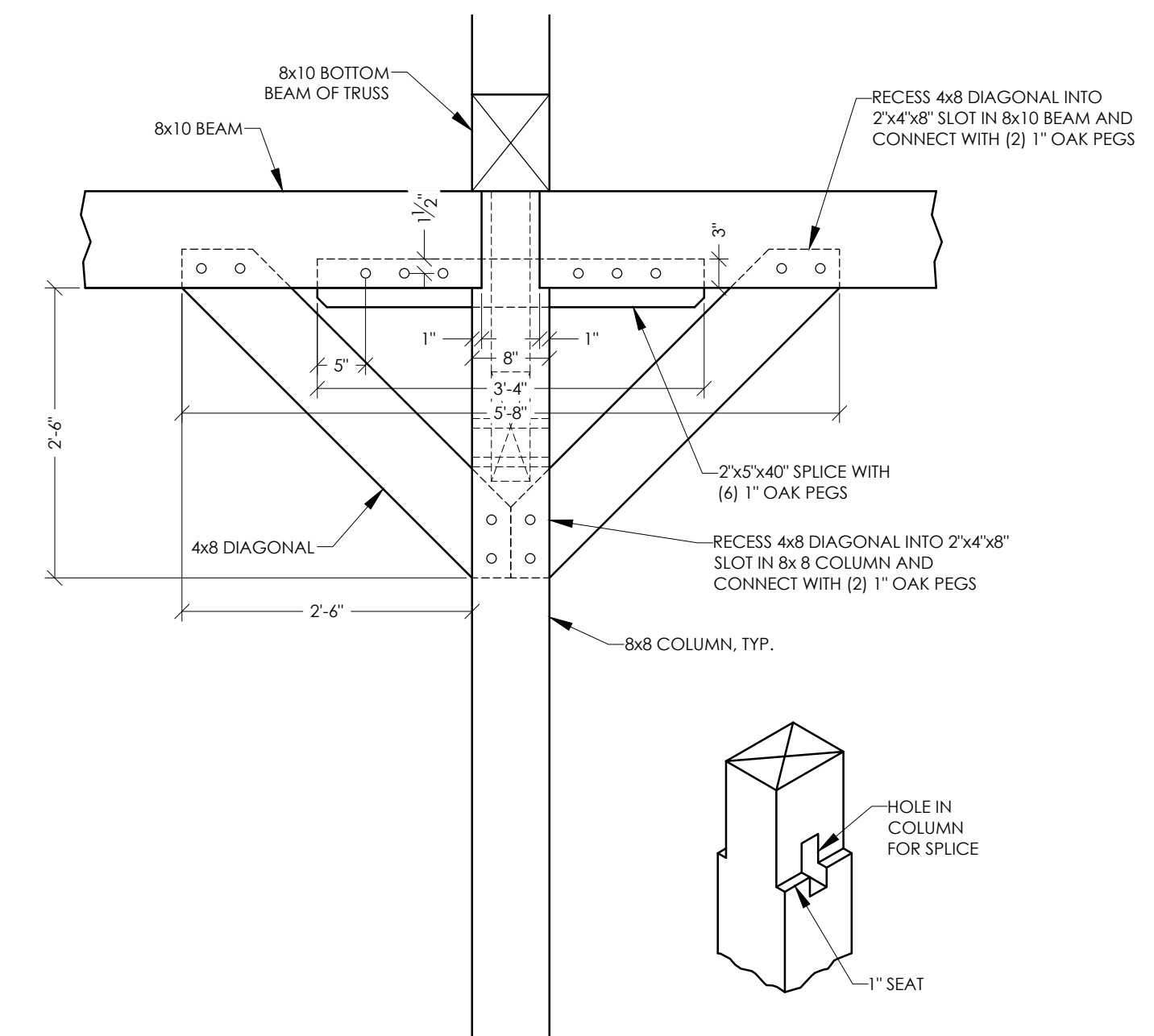




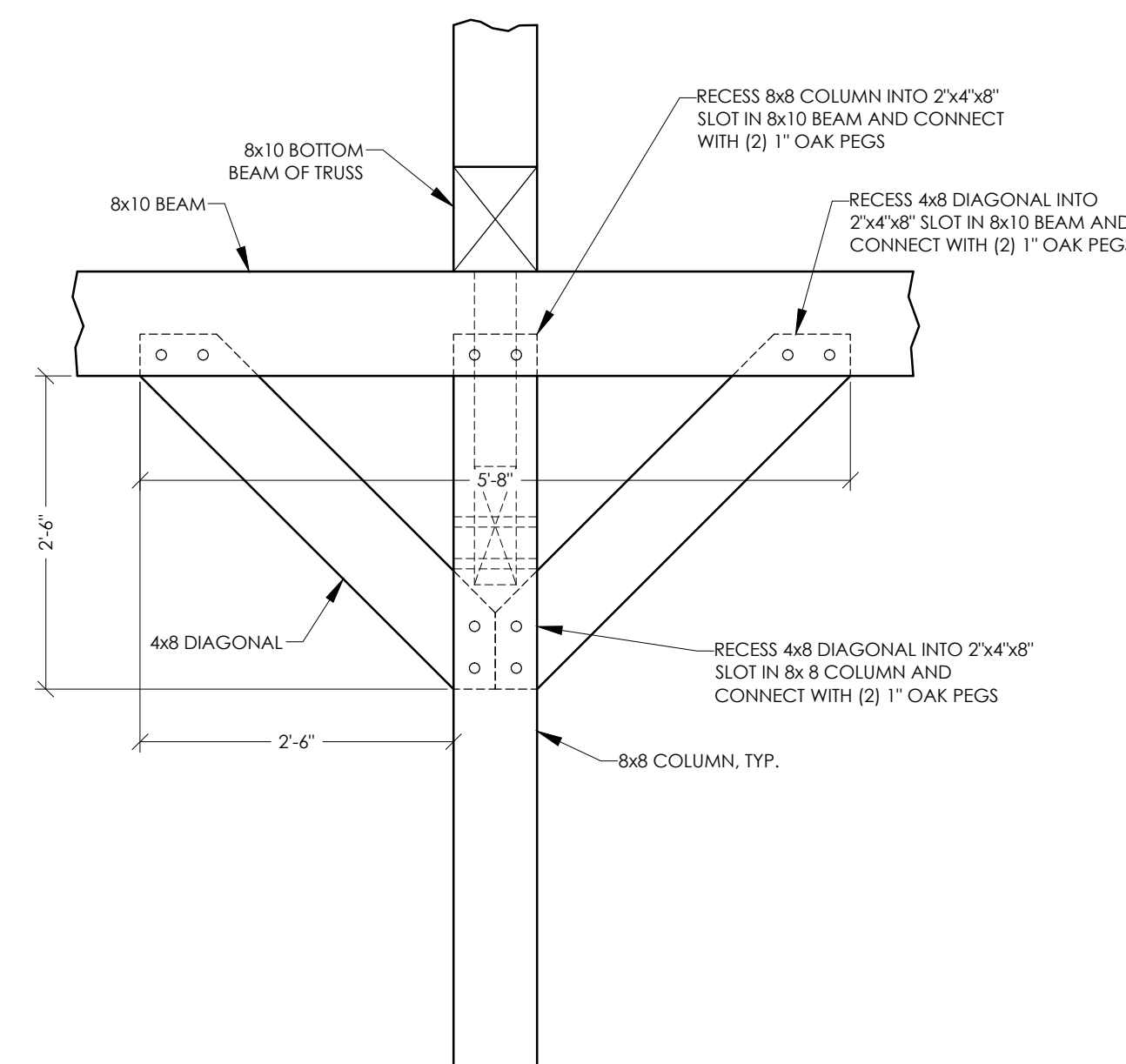
A RIDGE DETAIL
SCALE: 3/4"=1'-0" (24"x36")



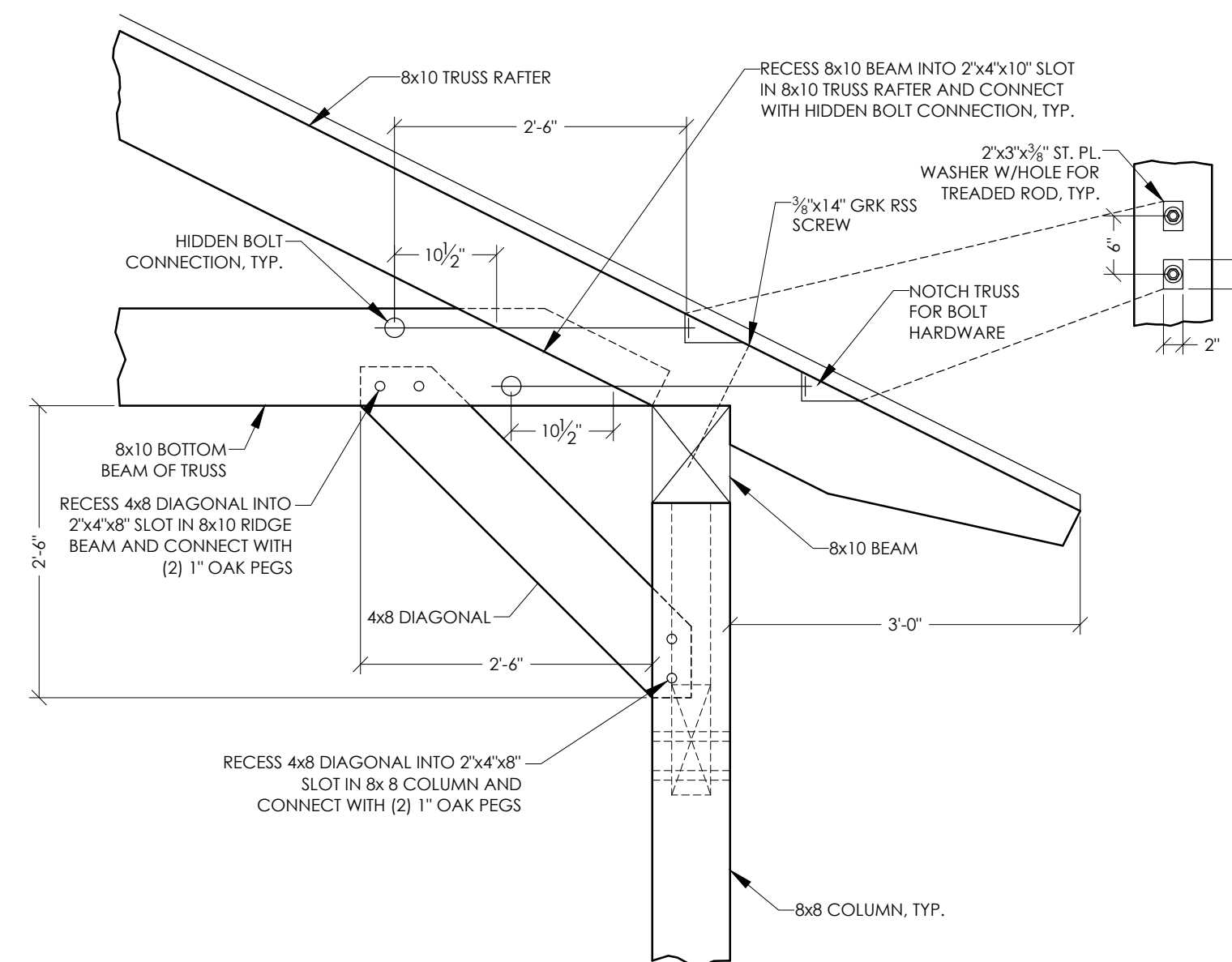
B RIDGE DETAIL
SCALE: 3/4"=1'-0" (24"x36")



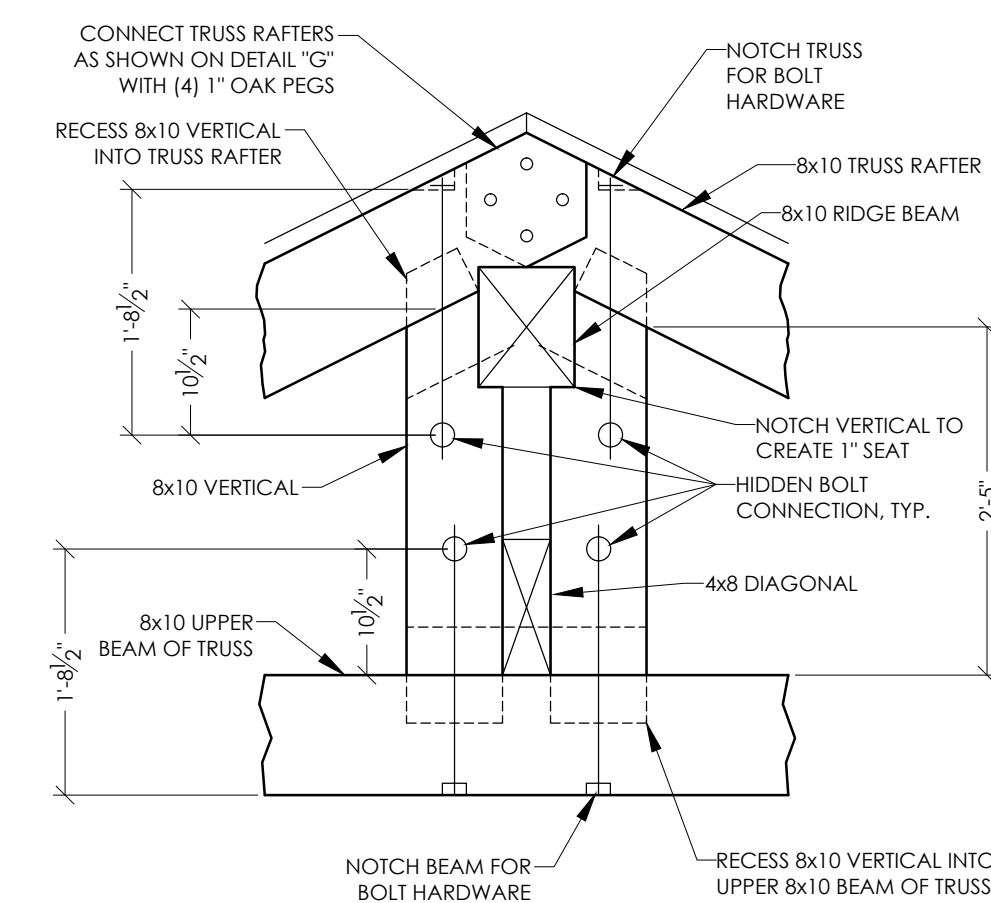
C COLUMN DETAIL
SCALE: 3/4"=1'-0" (24"x36")



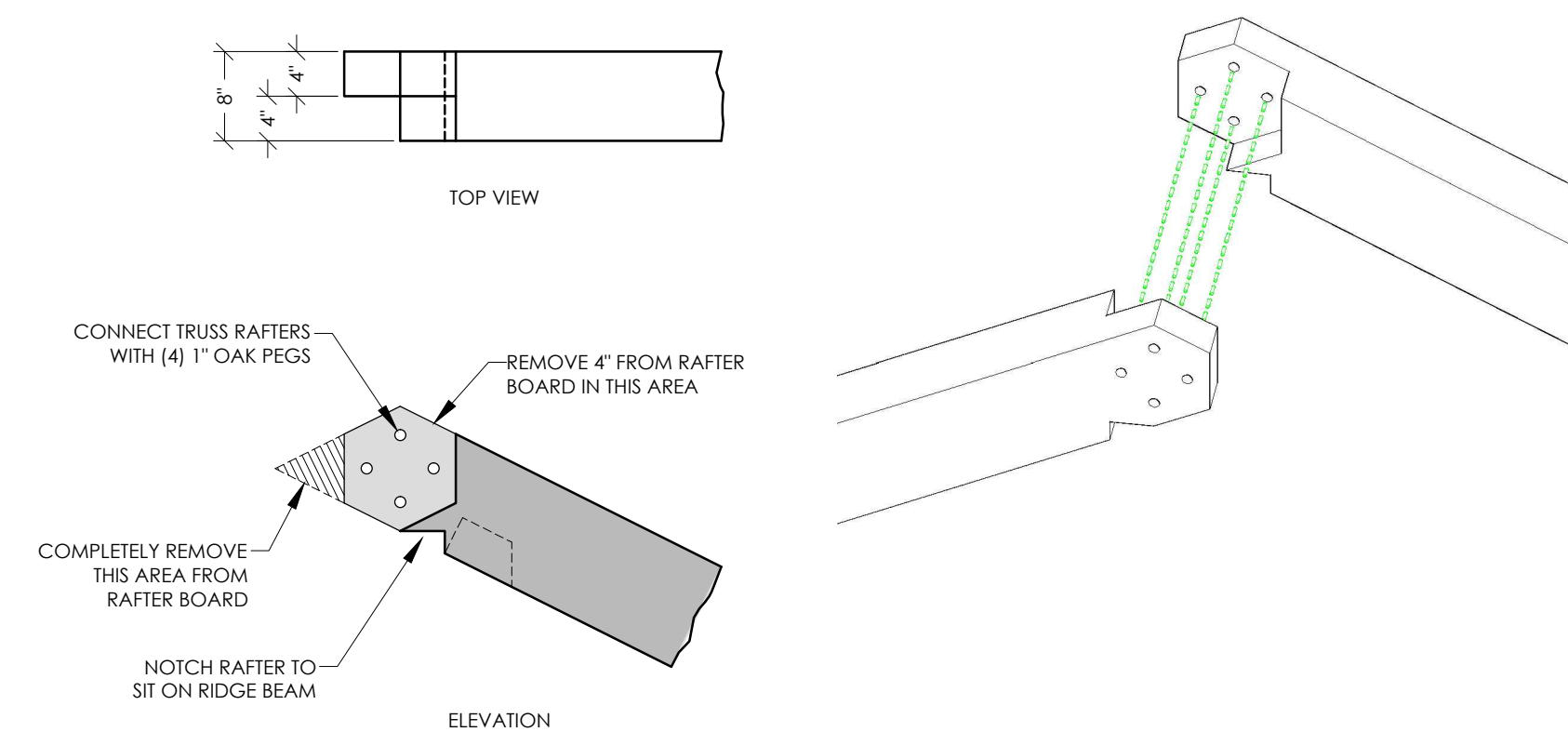
D COLUMN DETAIL
SCALE: 3/4"=1'-0" (24"x36")



E TRUSS DETAIL
SCALE: 3/4"=1'-0" (24"x36")



F TRUSS DETAIL
SCALE: 3/4"=1'-0" (24"x36")



G TRUSS DETAIL
SCALE: 3/4"=1'-0" (24"x36")



General Engineering Company

P.O. Box 340 • 916 Silver Lake Dr. • Portage, WI 53901
608-742-2169 (Office) • 608-742-2592 (Fax)

www.generalengineering.net

This document contains confidential or proprietary information of General Engineering Company. No part of this document may be reproduced, stored in a retrieval system, or transmitted in any form or by any means, electronic, mechanical, photocopying, recording, or by any information storage and retrieval system, without the prior written permission of General Engineering Company.

TRUSS & COLUMN DETAILS
Park Shelter - 22' x 33'

Dane County Dept. of Public Works
Dane County, WI

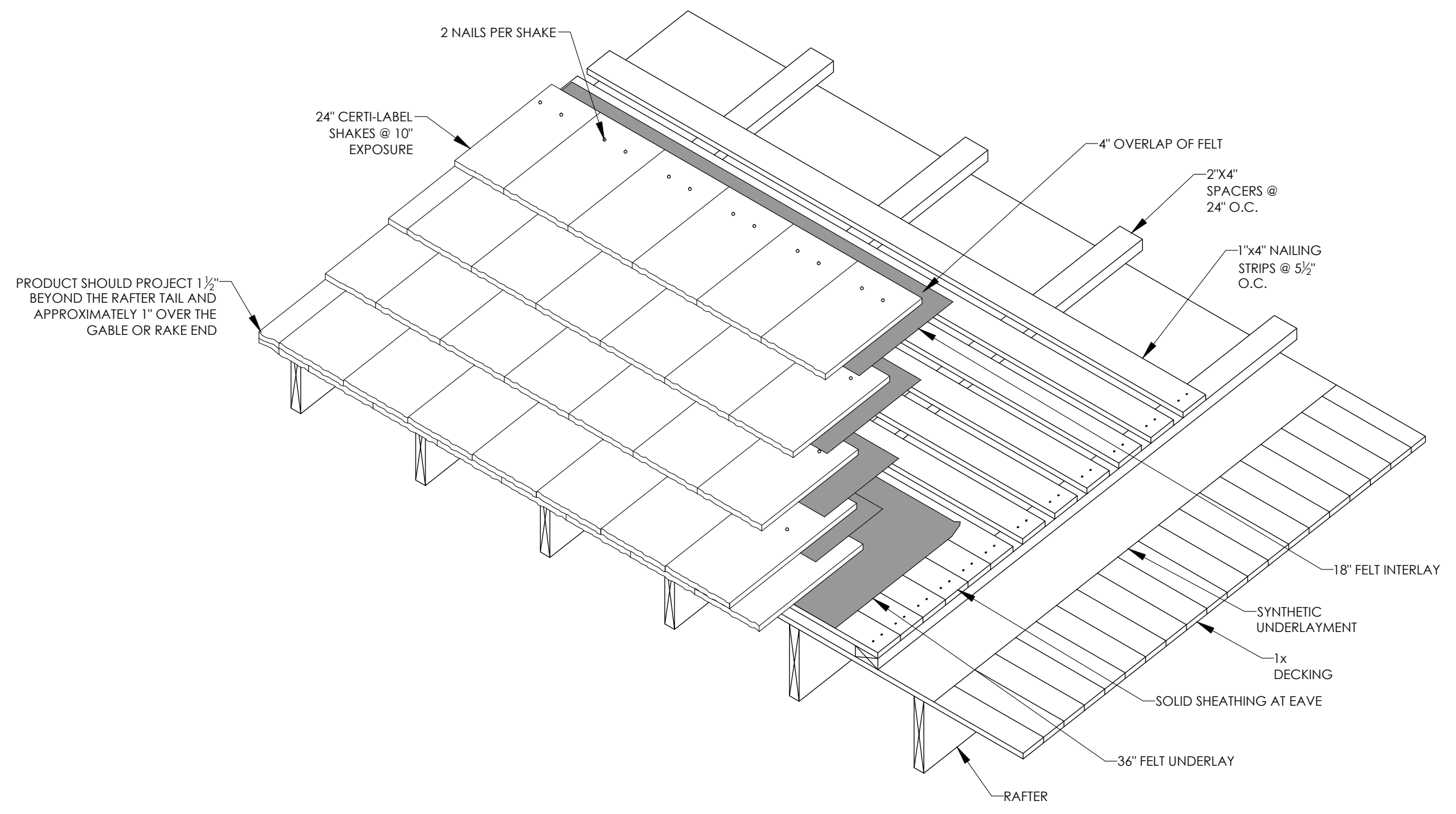
REVISIONS	NO.	BY	DATE

SCALE

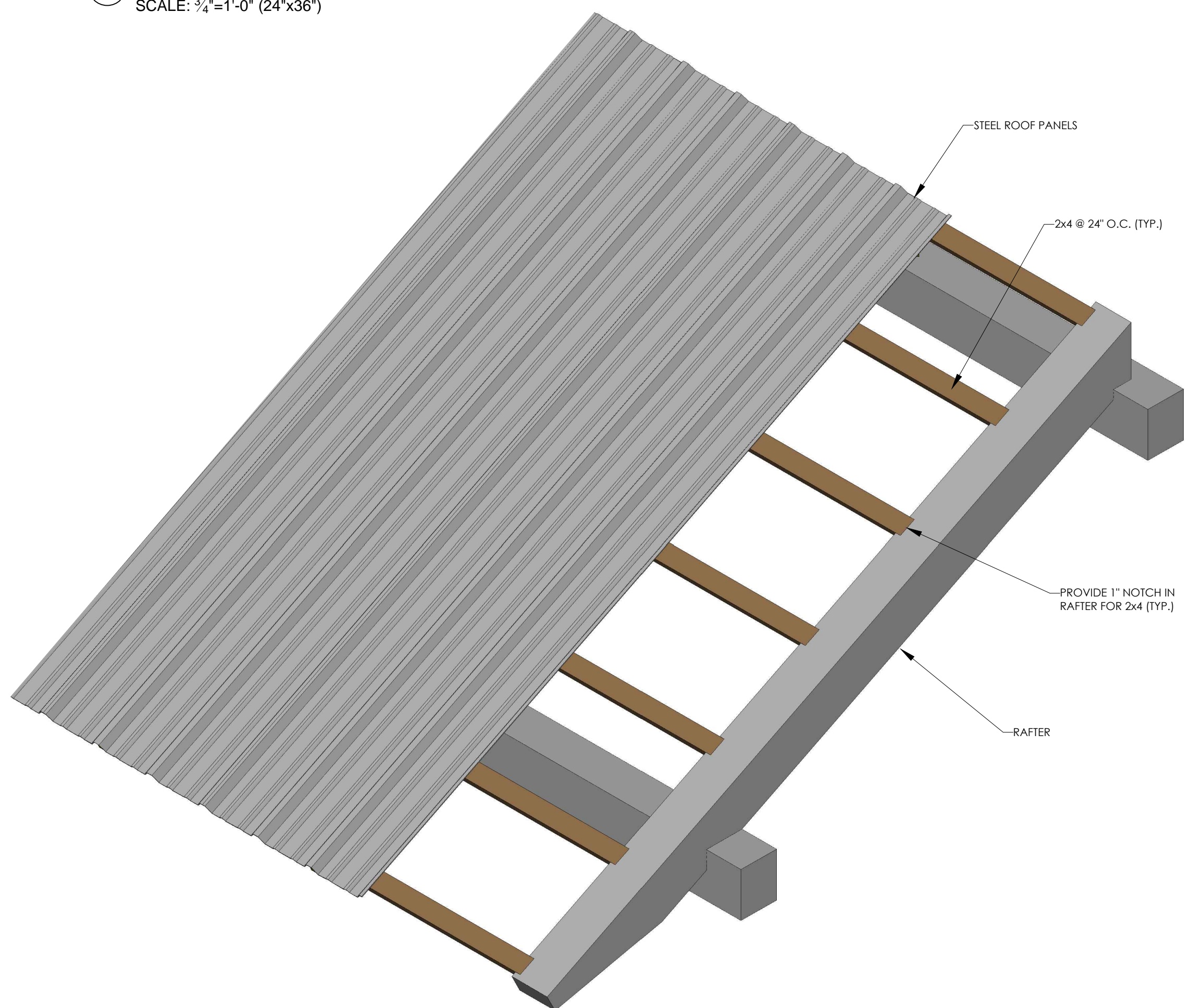
DRAWN BY **SRR**
DATE **May 2013**
GEC FILE NO. **2-0313-101**
SHEET NO.

A3.1

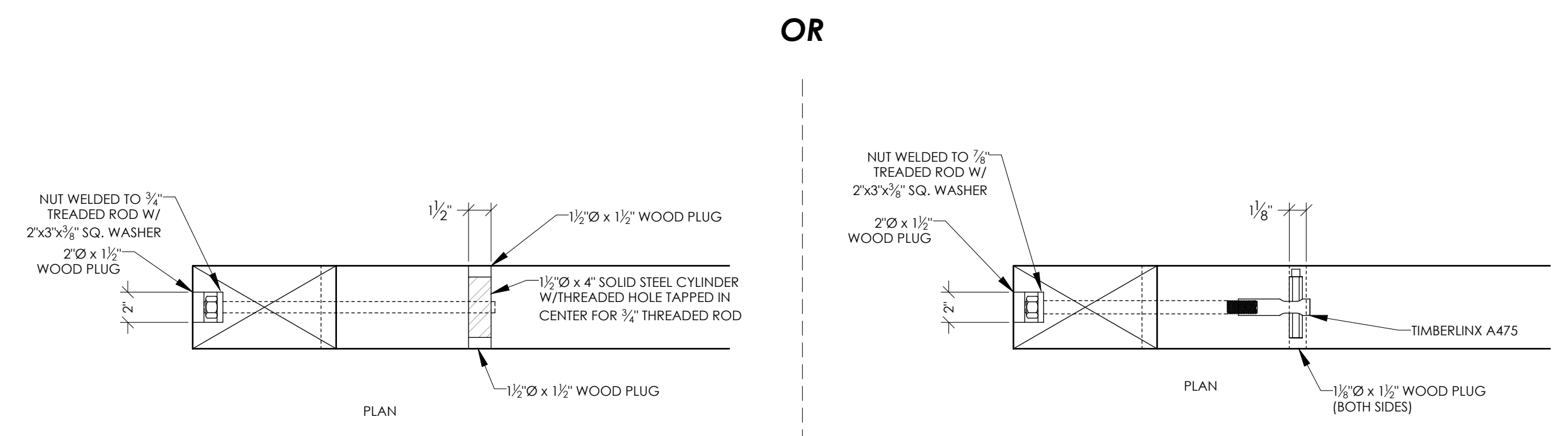
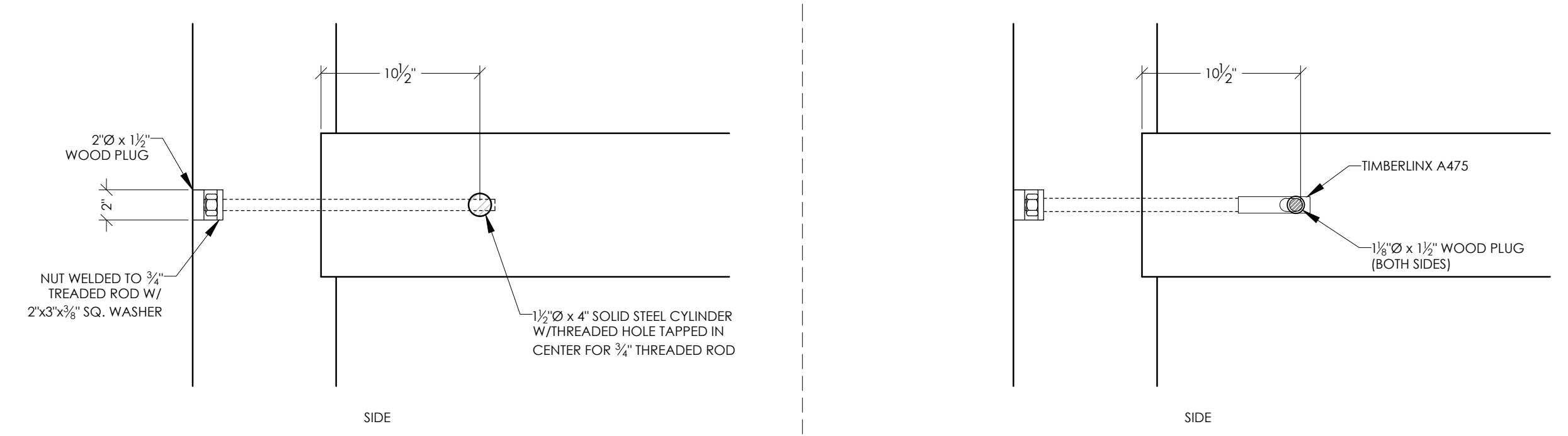




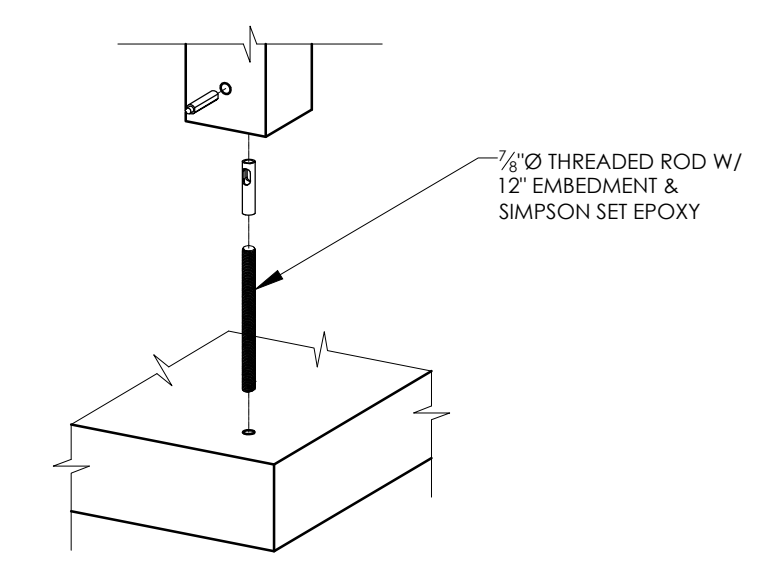
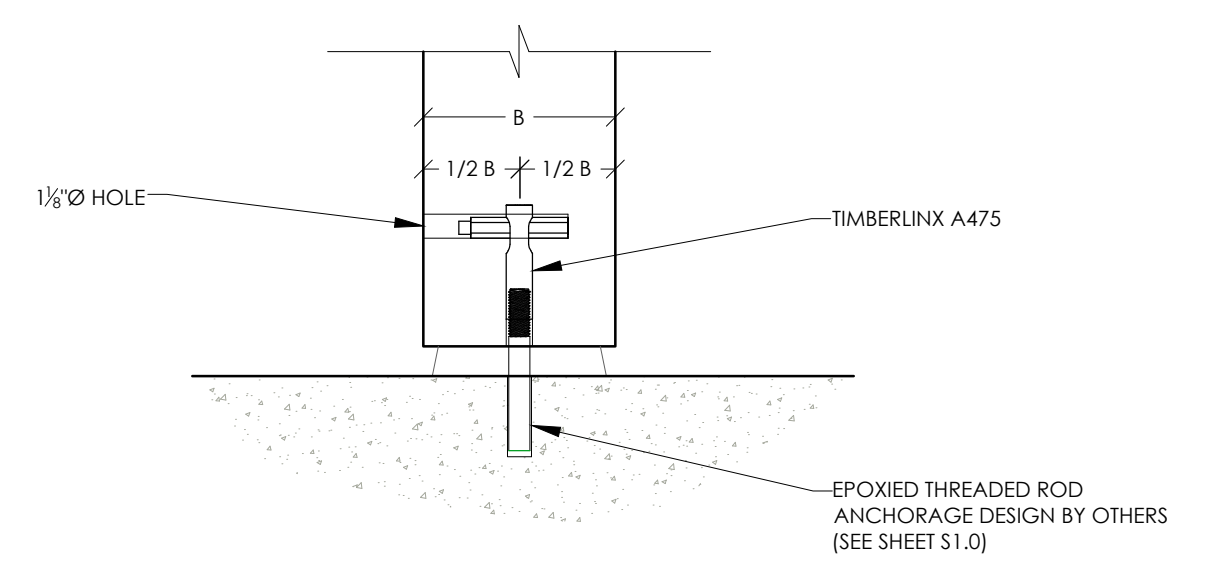
1 SHAKE DETAIL
SCALE: 3/4"=1'-0" (24"x36")



2 STEEL ROOF DETAIL
SCALE: 3/4"=1'-0" (24"x36")



3 TYPICAL HIDDEN BOLT DETAIL
SCALE: NONE



4 TIMBERLIX A475 DETAIL
SCALE: NONE



General Engineering Company
P.O. Box 340 • 916 Silver Lake Dr. • Portage, WI 53901
608-742-2169 (Office) • 608-742-2592 (Fax)
www.generalengineering.net

This document contains confidential or proprietary information of General Engineering Company. No part of this document may be reproduced, stored in a retrieval system, or transmitted in any form or by any means, electronic, mechanical, photocopying, recording, or by any information storage and retrieval system, without the prior written permission of General Engineering Company.

MISC DETAILS
Park Shelter - 22' x 33'
Dane County Dept. of Public Works
Dane County, WI

REVISIONS	NO.	BY	DATE

SCALE

DRAWN BY SRR
DATE May 2013

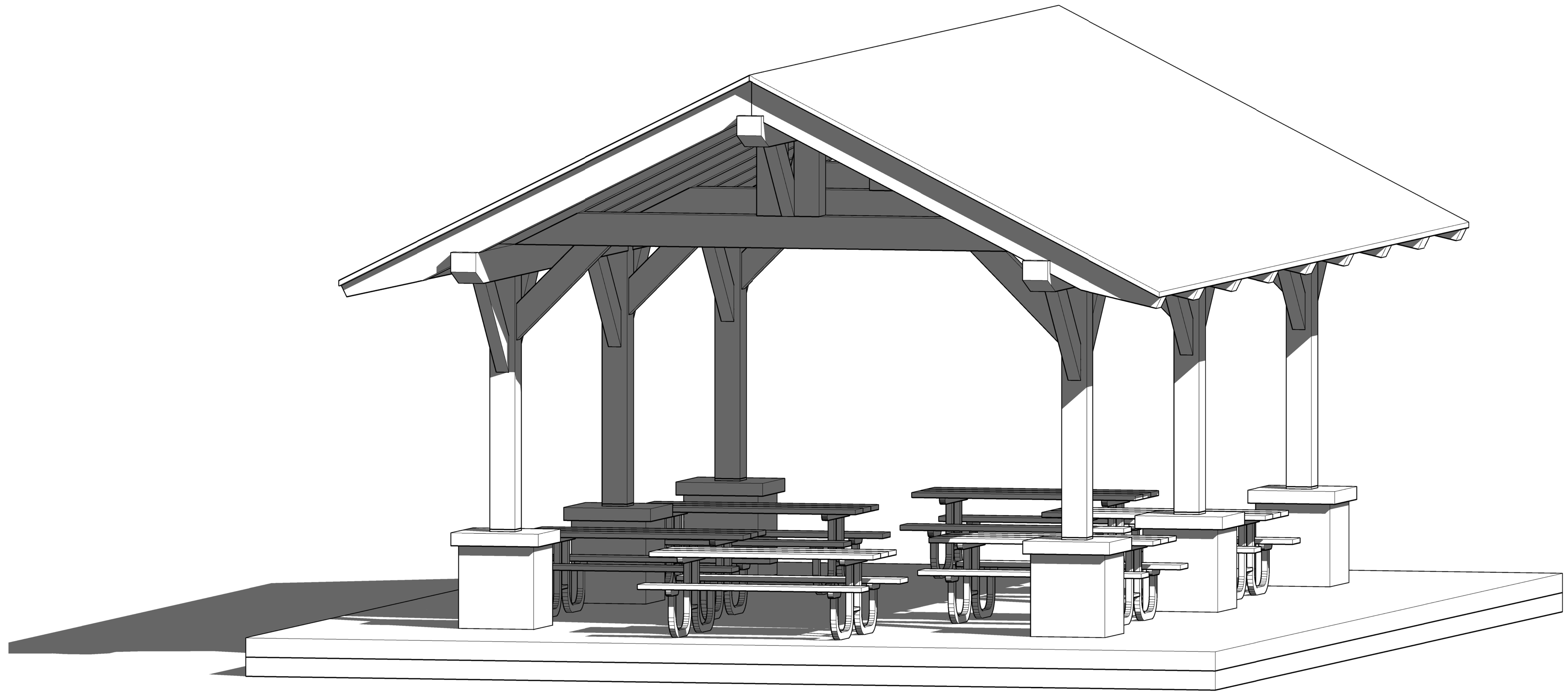
GEC FILE NO. 2-0313-101

SHEET NO. **A3.2**



© General Engineering Company Dept. of Public Works 1003 Silver Lake Drive Portage, WI 53901

G:\Current Files A\Dane County Dept of Public Works - 2-0313-101\CAD 2-0313-101_Architectural\FP_2-0313-101 (Small Shelter).rvt



1 PERSPECTIVE VIEW



General Engineering Company

P.O. Box 340 • 916 Silver Lake Dr. • Portage, WI 53901
608-742-2169 (Office) • 608-742-2592 (Fax)
www.generalengineering.net

This document contains confidential or proprietary information of General Engineering Company Inc. Neither this document nor its contents are to be distributed or disclosed either in whole or in part except as specifically authorized by General Engineering Company Inc.

PERSPECTIVE VIEW

PARK SHELTER - 22' X 33'
Dane County Dept. of Public Works
DANE COUNTY, WI

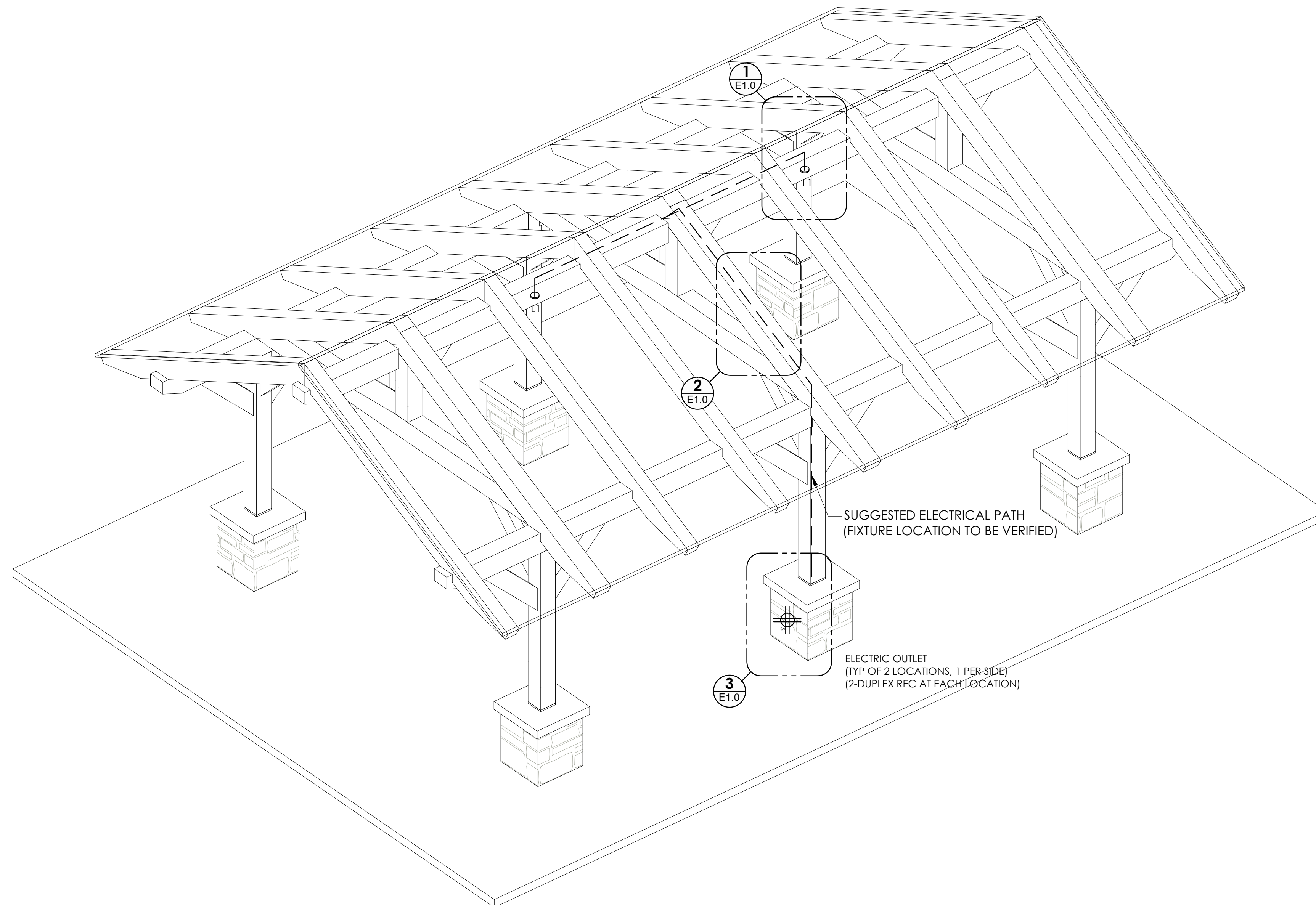
REVISIONS	NO.	BY	DATE

FULL SIZE SCALE

DRAWN BY: CJK
DATE: MAY 2013
GEC FILE NO.: 2-0313-101
SHEET NO.:

A4.0



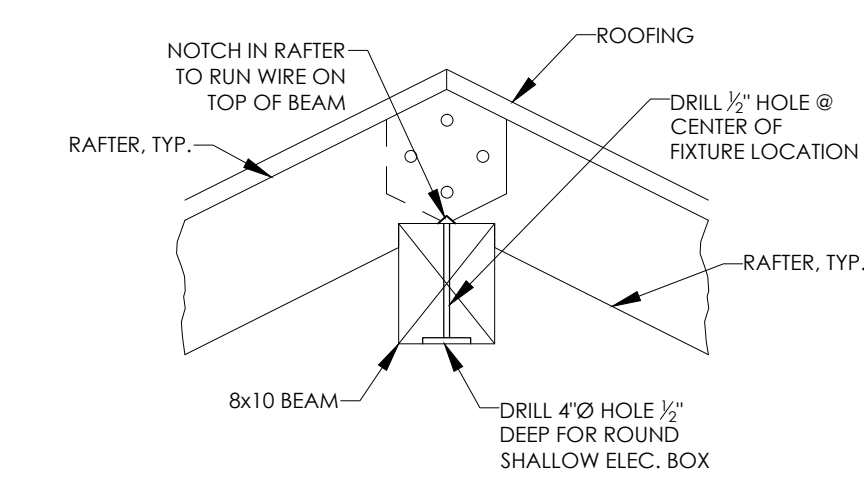


ELECTRICAL LAYOUT PERSPECTIVE

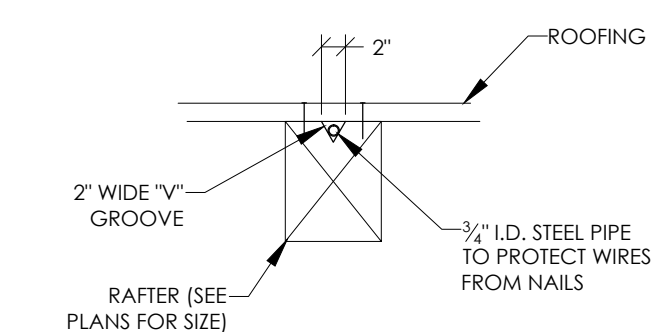
SCALE: 3/8" = 1'-0" (24"x36")

NOTES:

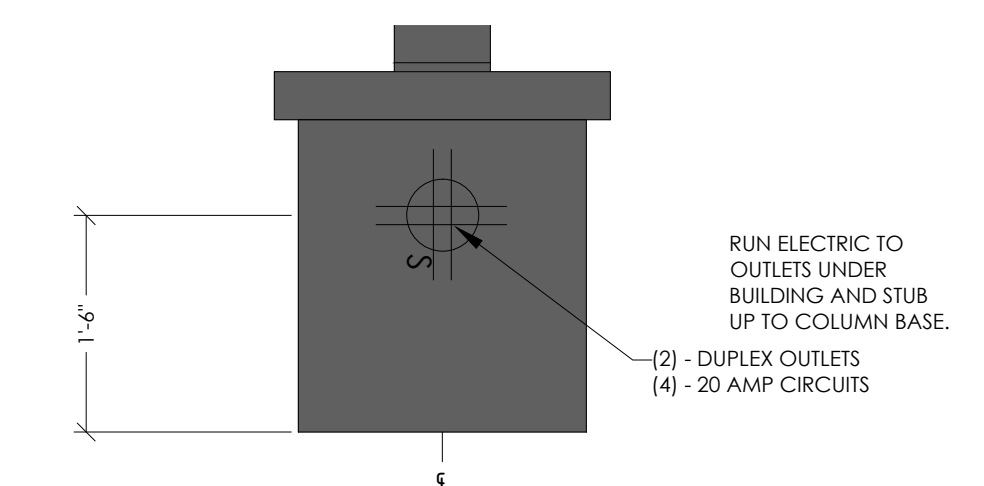
1. OUTLETS TO BE FED FROM UNDER FLOOR AND INSTALLED IN PIERS.
2. LOCATE 200 AMP MAIN SERVICE AT LOCATION DIRECTED BY OWNER. SERVICE WILL BE LOCATED WITHIN 25' OF PROPOSED FACILITY.
3. SEE SPECIFICATIONS FOR ADDITIONAL REQUIREMENTS.



1 ELECTRICAL FIXTURE @ RIDGE DETAIL
SCALE: 3/4" = 1'-0" (24"x36")



2 ELECTRICAL @ RAFTER DETAIL
SCALE: 3/4" = 1'-0" (24"x36")



3 ELECTRICAL OUTLET @ BASE DETAIL
SCALE: 3/4" = 1'-0" (24"x36")

(4 TOTAL)



General Engineering Company

P.O. Box 340 • 916 Silver Lake Dr. • Portage, WI 53901
608-742-2169 (Office) • 608-742-2592 (Fax)
www.generalengineering.net

The document contains confidential or proprietary information of General Engineering Company. No part of this document may be reproduced, stored in a retrieval system, or transmitted in any form or by any means, electronic, mechanical, photocopying, recording, or by any information storage and retrieval system, without the prior written permission of General Engineering Company.

ELECTRICAL DETAILS
Park Shelter - 22' x 33'

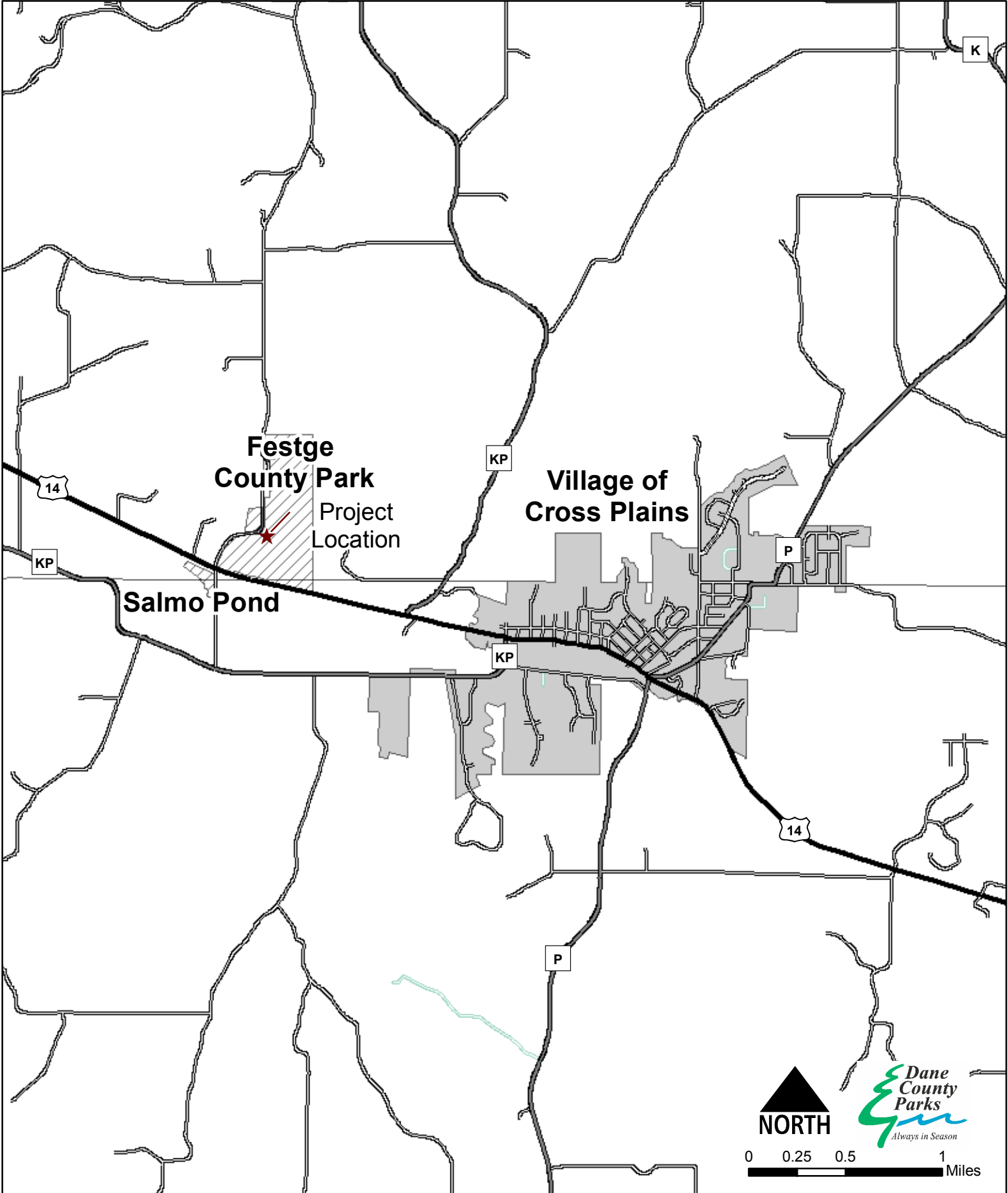
Dane County Dept. of Public Works
Dane County, WI

REVISIONS	NO.	BY	DATE

SCALE









DRAWN BY **SRR**
DATE **May 2013**
GEC FILE NO. **2-0313-101**
SHEET NO.
E1.0

Festge County Park Location Map



FESTGE COUNTY PARK AND SALMO POND

4894 Scherbel Rd; 4809 Scherbel Rd
Cross Plains, WI 53528

	Accessible Pier		Parking
	Group Camp		Restroom
	Hiking		Scenic Overlook
	Play Area		Shelter

