

Approved
 By: R.J.N.
 Design
 By: EDB
 Drawn
 By: JRL
 Scale
 AS
 Date
 1-17-07
 Job No.
 106101
 NOTED

100'-0" BRIDGE
BY OTHERS

VERIFY BRIDGE BEARING
REQUIREMENTS WITH
BRIDGE SUPPLIER

12"X12" TREATED (0.80 CCA)
 RED PINE TIMBER CAP-
 DOWEL TO TIMBER PILES
 W/ 1" DIA X 2'-6" GALV.
 STEEL ROD

3"X12" TREATED (0.80 CCA)
 TIMBER LAGGING

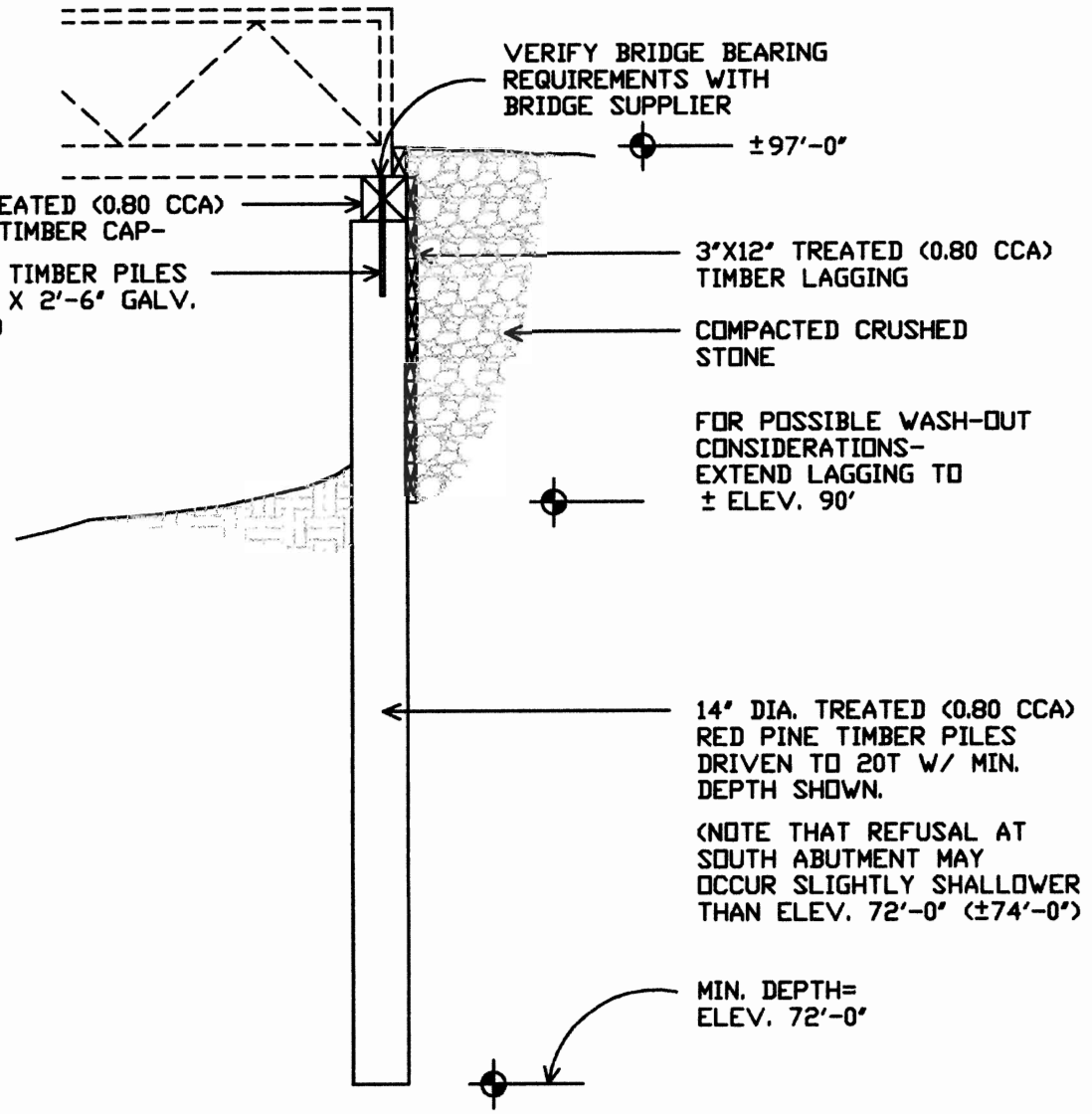
COMPACTED CRUSHED
STONE

FOR POSSIBLE WASH-OUT
 CONSIDERATIONS-
 EXTEND LAGGING TO
 ± ELEV. 90'

14" DIA. TREATED (0.80 CCA)
 RED PINE TIMBER PILES
 DRIVEN TO 20T W/ MIN.
 DEPTH SHOWN.

(NOTE THAT REFUSAL AT
 SOUTH ABUTMENT MAY
 OCCUR SLIGHTLY SHALLOWER
 THAN ELEV. 72'-0" (±74'-0")

MIN. DEPTH=
 ELEV. 72'-0"



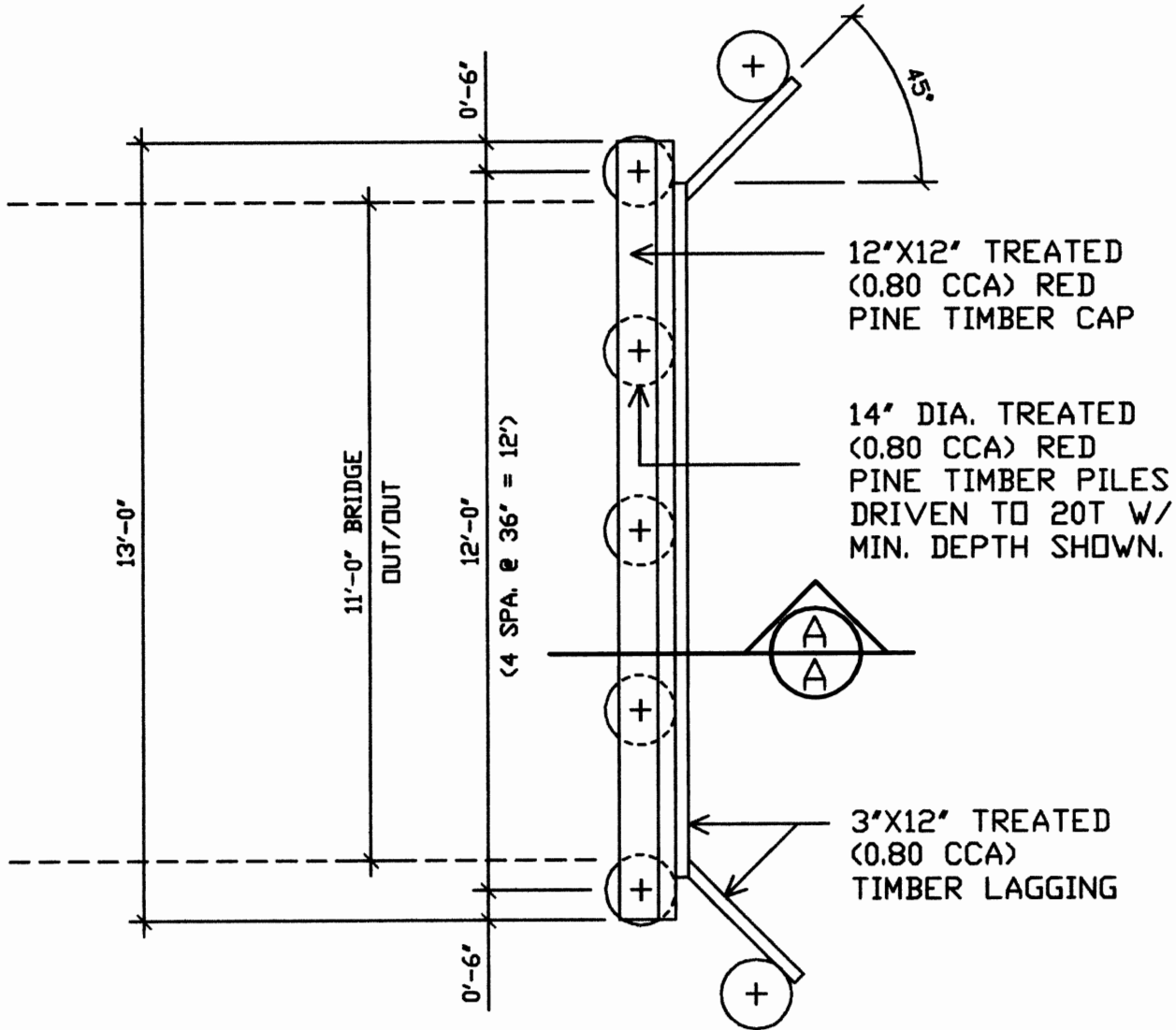
DEPARTMENT OF PUBLIC WORKS
 DANE COUNTY WISCONSIN

BRIDGE ABUTMENTS
 CAM-ROCK COUNTY PARK

TIMBER PILE ABUTMENT SECTION (A)
 SCALE: 1/4" = 1'-0"

Revisions

Sheet 1
 of 2



TIMBER PILE ABUTMENT PLAN VIEW
 SCALE: 3/8" = 1'-0"

Design By: EDB
 Drawn By: JRL
 Approved By: R.J.N.
 Date: 1-17-07
 Scale: AS
 Job No: 106101
 NOTED

DEPARTMENT OF PUBLIC WORKS
 DANE COUNTY WISCONSIN

BRIDGE ABUTMENTS
 CAM-ROCK COUNTY PARK

Revisions
 Sheet of 2/2

