





**Notes:**

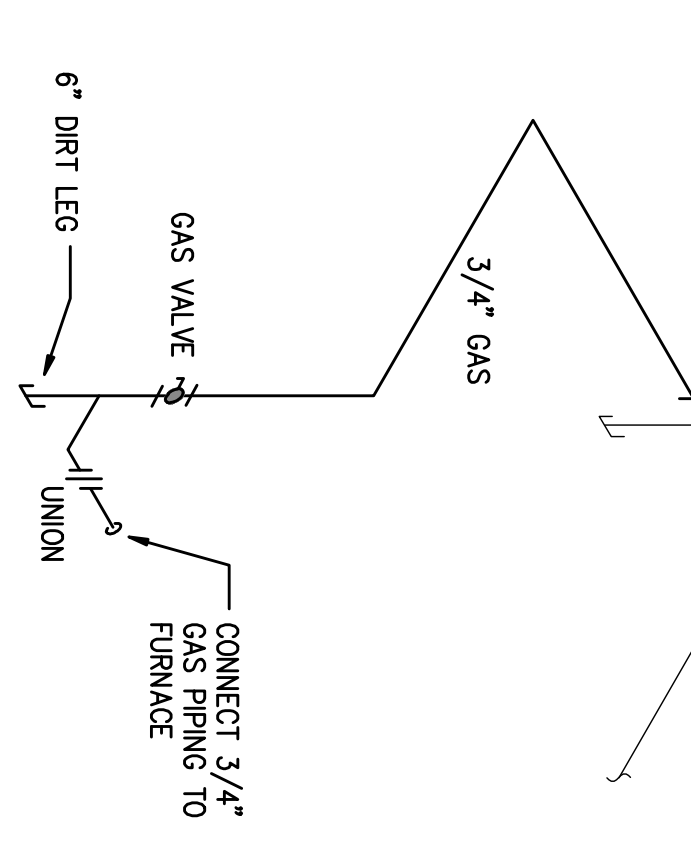
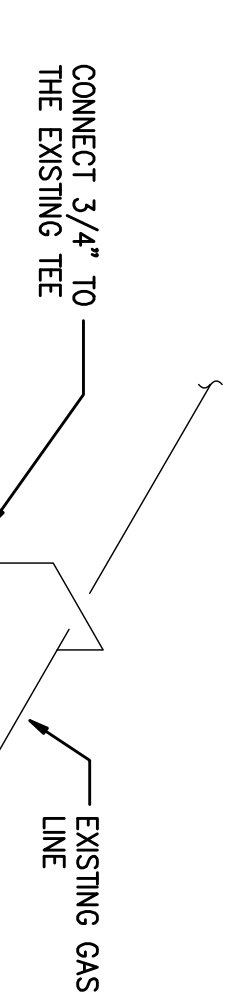
- ① CONNECT 6 INCH TO UNIT BURNER POWER VENT FAN WITH 6" DOUBLE WALL PRESSURE VENT.
- ② RUN VENT THROUGH WALL AT REMOVED VENT. PROVIDE SHEET METAL TO ENCLOSE OPENING BETWEEN NEW VENT AND CONCRETE WALL, EACH SIDE OF WALL.
- ③ CONNECT 3/4" INCH GAS PIPING TO EXISTING TEE AT REMOVED GAS LINE. RUN AND CONNECT TO FURNACE. REFER TO GAS PIPING DETAIL.
- ④ NEW BLOWER UNIT AND GAS FIRED FURNACE UNIT. INSTALL IN LOCATION OF REMOVED UNIT. REFER TO UNIT ELEVATION DETAIL.
- ⑤ INSTALL NEW DAMPER ACTUATOR ON EXISTING DAMPER.
- ⑥ NEW UNIT ELECTRICAL DISCONNECT.
- ⑦ NEW UNIT TIME CLOCK AND VENTILATION CONTROL PANEL.
- ⑧ NEW LOUVER L-11 INSTALLED IN EXISTING OPENING. PROVIDE TAMPER PROOF SCREENS.
- ⑨ EXISTING NATURAL GAS METER.
- ⑩ EXISTING EXHAUST FAN.
- ⑪ EXISTING ELECTRICAL PANELS.  
a. LEFT PANEL SERVES EXISTING FURNACE INDICATED ON PLAN B-H101 AND EXHAUST FAN INDICATED ON PLAN B-H100.  
b. EXISTING EXHAUST FAN IS SERVED BY A 208V, 3 PHASE, 20A BREAKER  
c. EXISTING MAKEUP AIR UNIT IS SERVED BY A 208V, 3 PHASE, 20A BREAKER.

**ELECTRICAL NOTES - DRAWINGS H100 AND H101:**

1. THESE NOTES APPLY TO ALL ELECTRICAL DEMOLITION AND NEW WORK FOR THIS PROJECT.
2. REFER TO H100 AND H101 FOR THE EQUIPMENT LOCATIONS REFERENCED IN THESE NOTES.
3. NOTES IN THIS SECTION ARE NOT INDICATED ON THE DRAWINGS.
4. ALL WORK SHALL COMPLY WITH THE NATIONAL ELECTRICAL CODE, WISCONSIN ELECTRICAL CODE AND THE CITY OF MADISON ELECTRICAL CODE REQUIREMENTS.
5. DISCONNECT POWER TO EXISTING EXHAUST FAN SERVED BY PANEL IN MECHANICAL ROOM.
6. DISCONNECT POWER TO EXISTING MAKE UP AIR UNIT FAN SERVED BY PANEL IN MECHANICAL ROOM.
7. PROVIDE NEW POWER CONNECTION TO MAKE UP AIR UNIT MUA-1 FROM EXISTING PANEL.
8. PROVIDE NEW 208V, 3 PHASE, 20A BREAKER IN PANEL, STARTER, DISCONNECT SWITCH, CONDUIT AND WIRING. FEED WITH 3#12, 1#26, 1/2 INCH CONDUIT.
9. PROVIDE NEW POWER CONNECTION TO EXHAUST FAN EF-G1 FROM EXISTING PANEL.
10. PROVIDE NEW 208V, 3 PHASE, 20A BREAKER IN PANEL, STARTER, DISCONNECT SWITCH, CONDUIT AND WIRING. FEED WITH 3#12, 1#26, 1/2 INCH CONDUIT. PORTIONS OF EXISTING CONDUIT MAY BE REUSED IF FOUND IN SERVICEABLE CONDITION.
11. PROVIDE 120V, 20A CONNECTION TO CONTROL PANEL IN MECHANICAL ROOM AND TO GAS DETECTION CONTROL PANEL IN OFFICE. PROVIDE A NEW 20/1 BREAKER IN EXISTING PANEL IN MECHANICAL ROOM. FEED WITH 2#12, 1#26, 1/2 INCH CONDUIT.

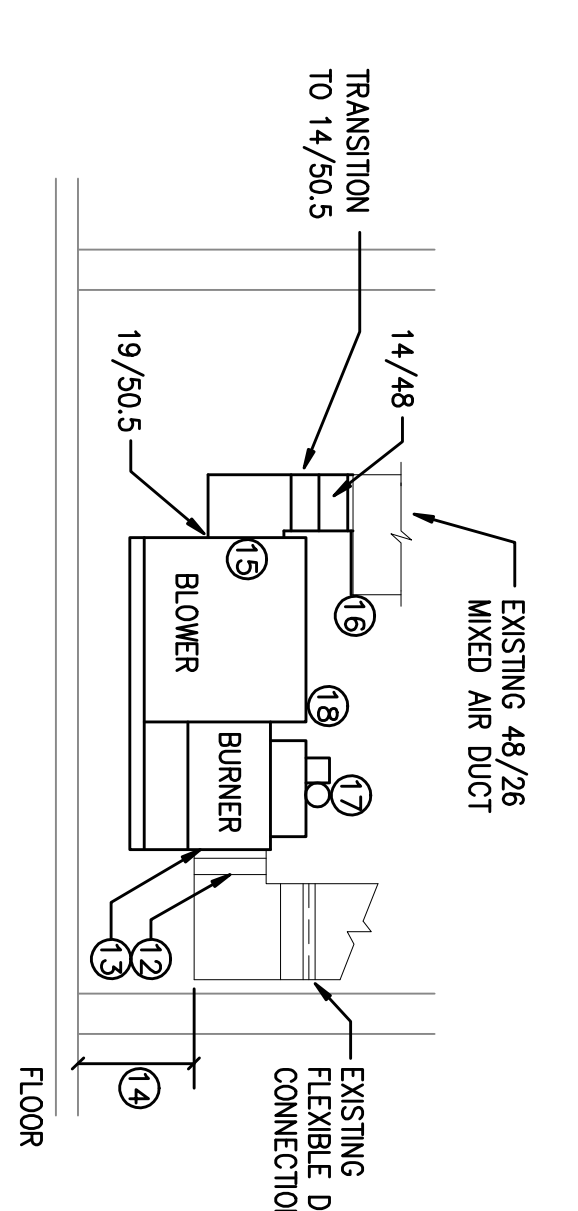
**DEMOLITION WORK NOTES - PLAN B-H101:**

- ① REMOVE EXISTING GAS FIRED HEATING UNIT.
- ② REMOVE GAS PIPING FROM TEE IN DROP TO HEATING UNIT.
- ③ EXISTING GAS METER TO REMAIN
- ④ REMOVE DAMPER ACTUATOR. (DAMPER TO REMAIN, NEW ACTUATOR TO BE INSTALLED)
- ⑤ REMOVE RETURN DUCT FROM FLEXIBLE CONNECTOR TO UNIT (SEE NEW UNIT ELEVATION)
- ⑥ REMOVE RETURN DUCT TO REMAIN.
- ⑦ OUTSIDE AIR DUCT TO REMAIN.
- ⑧ RETURN AIR DUCT AND RETURN GRILLE TO REMAIN.
- ⑨ REMOVE UNIT BURNER VENT DUCT TO CONNECTION TO TRANSITE PIPE.
- ⑩ HEATING UNIT DISCONNECT SWITCH. REMOVE WIRING AND CONDUIT FROM SWITCH TO UNIT.
- ⑪ SUPPLY AIR DUCT TO REMAIN.
- ⑫ ELECTRICAL PANELS TO REMAIN.
- ⑬ TRANSITE PIPE (HEATING UNIT VENT) TO BE REMOVED BY OWNER.
- ⑭ EXHAUST FAN TO REMAIN UNALTERED.
- ⑮ REMOVE LOUVER.

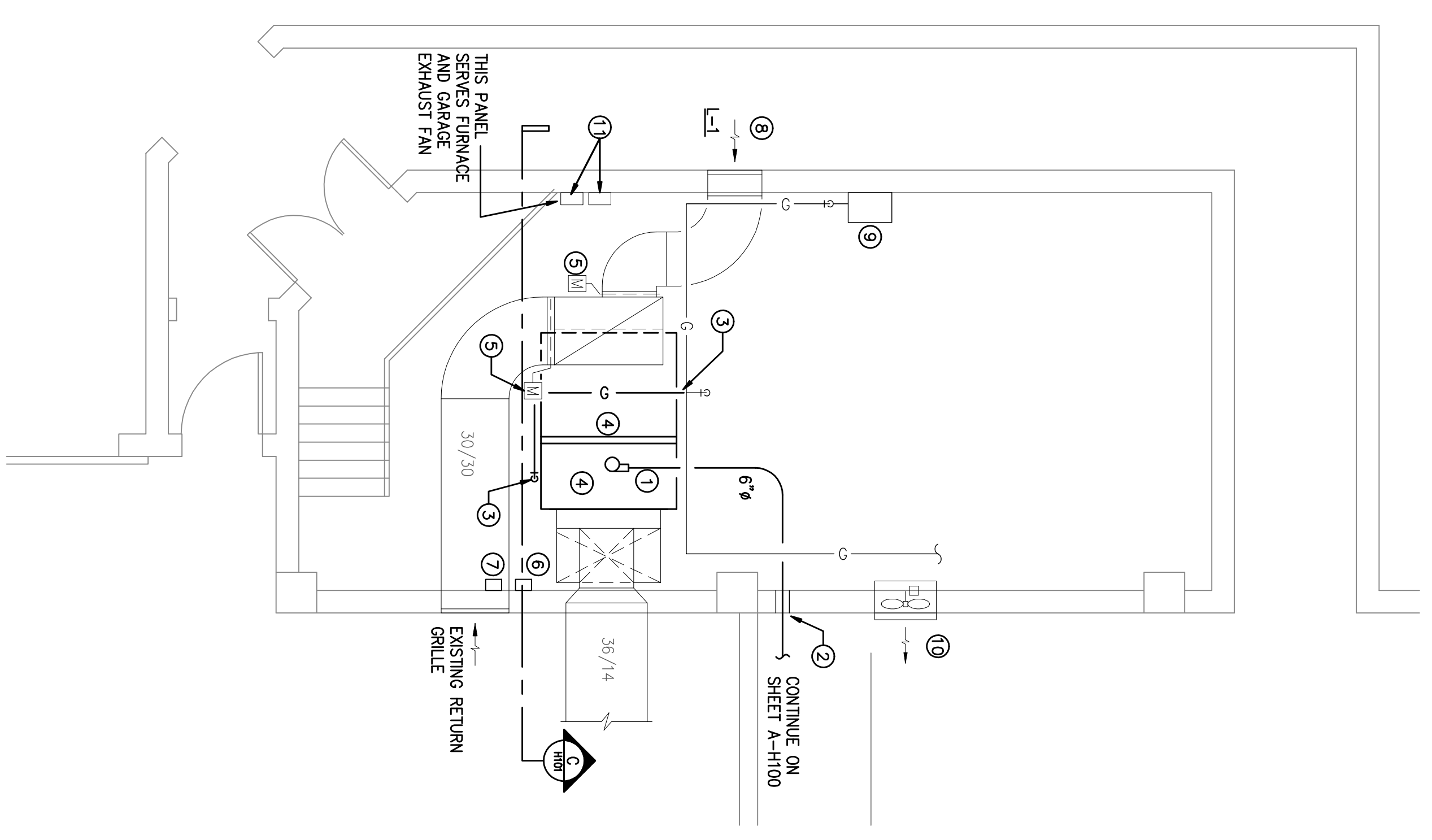


**D** GAS PIPING DETAIL  
NOT TO SCALE

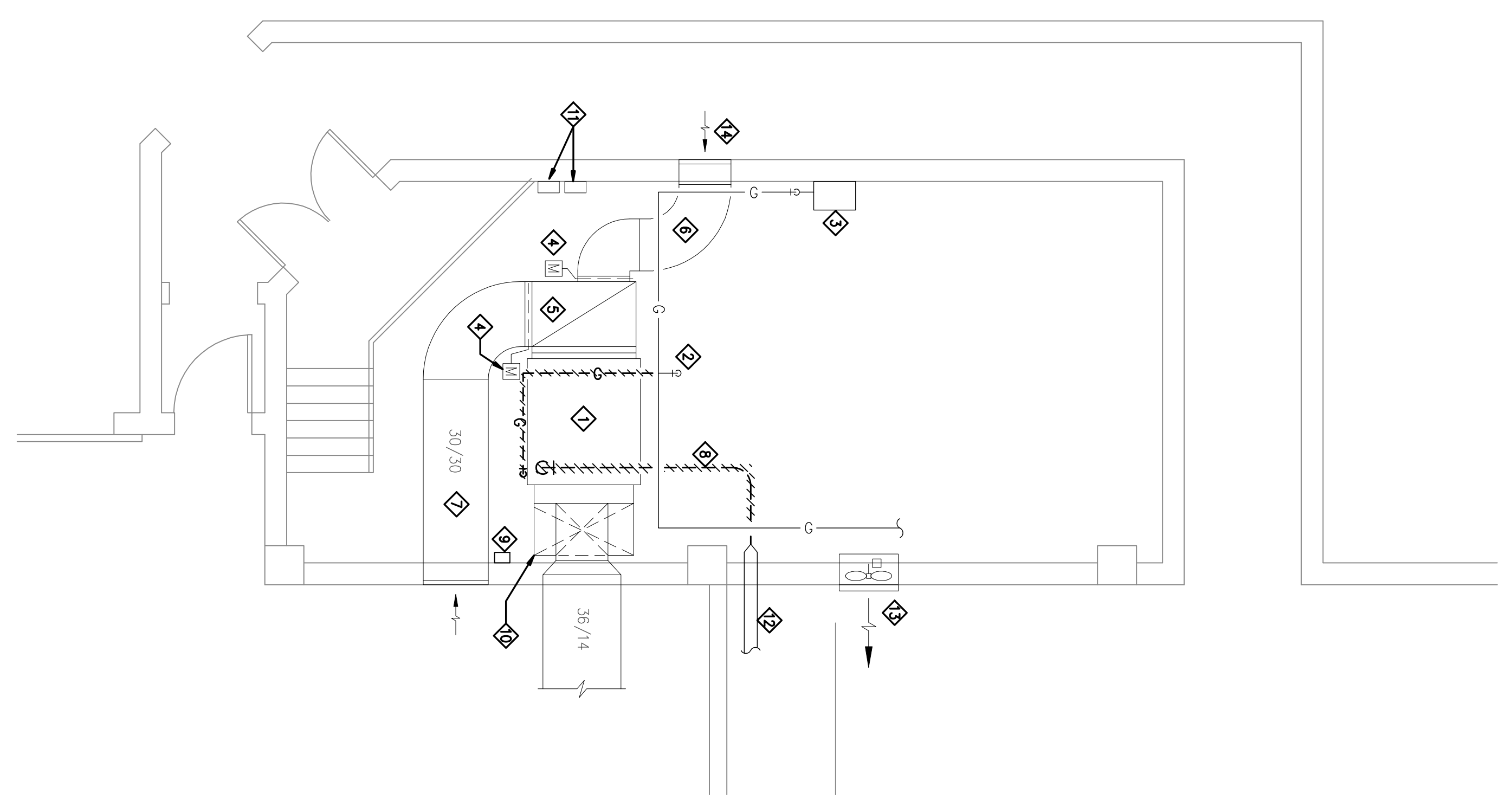
- NEW WORK NOTES - SECTION C-H101:**
- ⑫ EXISTING 18/46 SUPPLY DUCT
  - ⑬ CONNECT UNIT 19/46 UNIT OUTLET TO EXISTING DUCT.
  - ⑭ SET UNIT HEIGHT TO MATCH UNIT OUTLET TO THE EXISTING SUPPLY DUCT.
  - ⑮ CONNECT 19/51.5 TO UNIT INTAKE.
  - ⑯ BLANK OFF PORTION OF THE MIXED AIR DUCT.
  - ⑰ 6" VENT CONNECTION TO VENT FAN.
  - ⑱ SUSPEND UNIT FROM STRUCTURE.



**C** SECTION OF BLOWER UNIT  
SCALE: 1/4" = 1'-0"



**A** MECHANICAL ROOM FLOOR PLAN - NEW WORK  
SCALE: 1/4" = 1'-0"



**B** MECHANICAL ROOM FLOOR PLAN - DEMOLITION  
SCALE: 1/4" = 1'-0"

<p>DANE COUNTY CAPITOL SQUARE SOUTH RAMP REQUEST FOR BID NO. 317022</p>	
<p>HEATING &amp; VENTILATING EQUIPMENT REPLACEMENT REBID</p>	
<p>113 SOUTH HENRY STREET MADISON, WI</p>	
<p>Date: 01/30/18</p>	<p>Issuance/Revisions</p>
<p>01/30/18</p>	<p>ISSUED FOR CONSTRUCTION</p>
<p>Symbol</p>	<p>Symbol</p>

Drawing Title:  
**MECHANICAL ROOM FLOOR  
PLANS - DEMOLITION  
AND NEW WORK**

Form: 59  
FBN

Drawing No.  
**H101**

**FAN SCHEDULE**

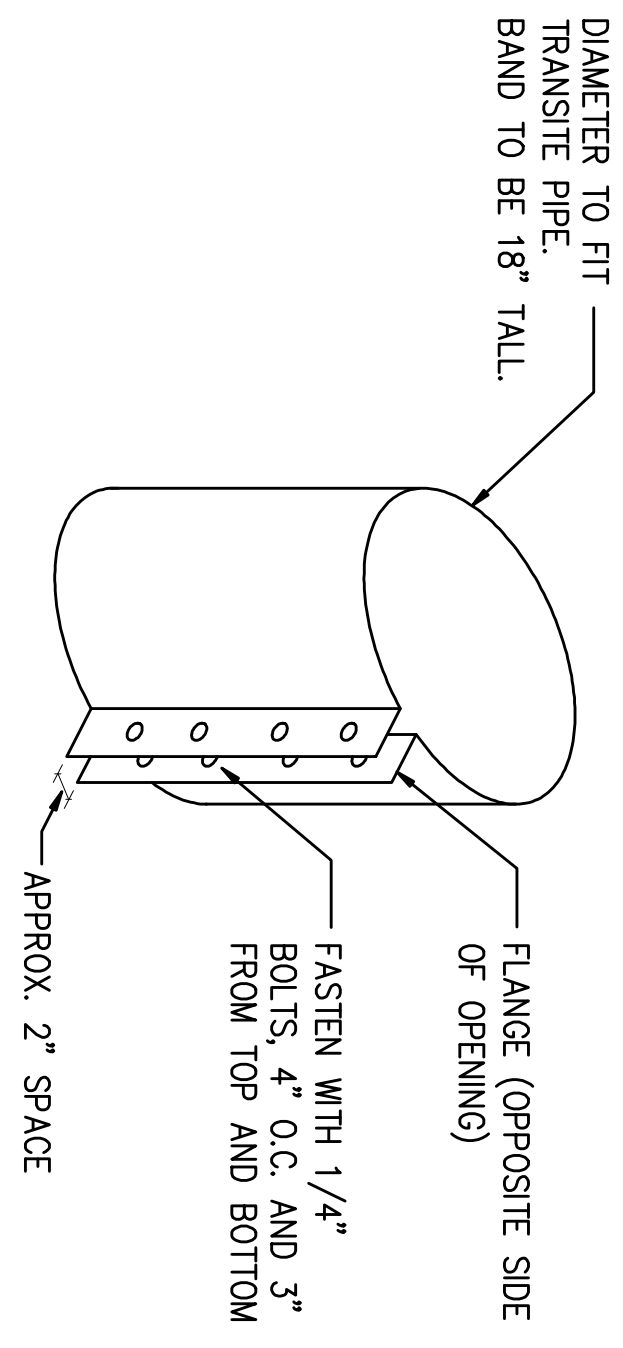
MARK	MANUFACTURER	MODEL NO.	AIR FLOW (CFM)	EXT. STATIC PRESS.	FAN DATA				MOUNTING				MOTOR DATA			REMARKS	
					FAN TYPE	WHEEL DRIVE TYPE	REPM	TYP SPEED	POSITION	MOUNTING	FLOOR STAND	TEFC	ENCL.	BHP	HP		VOLTS / PHASE
EF-G1	GREENHECK	TGB-122-15	4700	0.5	INLINE	BI BELT	MOTOR 1725	FAN 993	TYP SPEED 9599	HORIZONTAL				1.1	1 1/2	208/60/3	1 THRU 8
Notes																	
1 ALUMINUM WHEEL, HOUSING AND RUB RING																	
2 1/2" DIA. 1/2" DEEP STAINLESS STEEL INLET AND OUTLET CONNECTION FLANGES																	
3 ONE SET SPARE BELTS																	
4 ISOLATOR SPRINGS, 1 INCH																	
5 NEMA-1 TOGGLE SWITCH																	
6 MOTOR STARTER - MODEL MSAC-19-1J58-40, 1.5 HP, 208/60/3																	
7 INSPECTION SECTION ON INLET END OF FAN																	

**GAS FIRED MAKE-UP AIR UNIT**

MARK	MANUFACTURER	MODEL NO.	UNIT ARRANG.	DISCH. POSITION	HEATING TYPE	GAS PRESS. IN, W.C.	CAPACITY				FAN IN, W.C.	EST. SP. TOTAL	MOTOR RPM	BHP	HP	VOLTS / PHASE	REMARKS
							HEAT. CAP. (BTU/H)	HEAT. CAP. (MMBtu/H)	HEAT. CAP. (MMBtu/H)	HEAT. CAP. (MMBtu/H)							
MUA-1	STERLING	ME-40A	HORIZ	HORIZ	NAT GAS	14	415	55	400	1048.8	4.700	0.7	1725	2.00		208/3	1 THRU 18
REMARKS																	
1 RETURN FRESH AIR																	
2 409 STAINLESS STEEL FURNACES																	
3 SINGLE STAGE BURNER CONTROL																	
4 STANDARD BLOWER																	
5 MAXIMOL ELECTRONIC MODULATION BURNER CONTROL																	
6 PREMIUM EFFICIENCY MOTOR																	
7 MOTOR STARTER																	
8 REAR BLOWER INLET																	
9 1 INCH 30% FILTERS IN BLOWER CABINET																	
10 HIGH GAS PRESSURE SWITCH																	
11 LOW GAS PRESSURE SWITCH																	
12 GAS PRESSURE REGULATOR - IF REQUIRED FOR BURNER GAS PRESSURE																	
13 DIRTY FILTER SWITCH																	
14 NOTE THAT UNIT WILL OPERATE WITH 100% OUTSIDE AIR OR 100% RETURN AIR SEE CONTROL SPECIFICATION																	

**LOUVER SCHEDULE**

MARK	MPGR	MODEL NO.	INTAKE OR RELIEF	AIR FLOW CFM	SIZE W X H X D INCHES	FREE AREA MIN SF	AIR PRESSURE DROP W.C.	CONSTRUCTION				REMARKS
								BLADE STYLE	MATERIAL	THICKNESS (IN)	FRAME TYPE	
L-1	GREENHECK	ESU-153	INTAKE	1,425	36 x 24	3.9	0.14	ALUM	0.05	0.063	30	1, 2, 3
NOTES												
1 FREE AREAS FOR SCHEDULED SIZE												
2 BRDSCREEN												
3 MIL FINISH												



**A** EXISTING VENT STACK BAND DETAIL  
NOT TO SCALE

113 SOUTH HENRY STREET  
MADISON, WI

HEATING & VENTILATING  
EQUIPMENT REPLACEMENT  
REBID

HVAC SCHEDULES  
AND DETAILS

**H200**