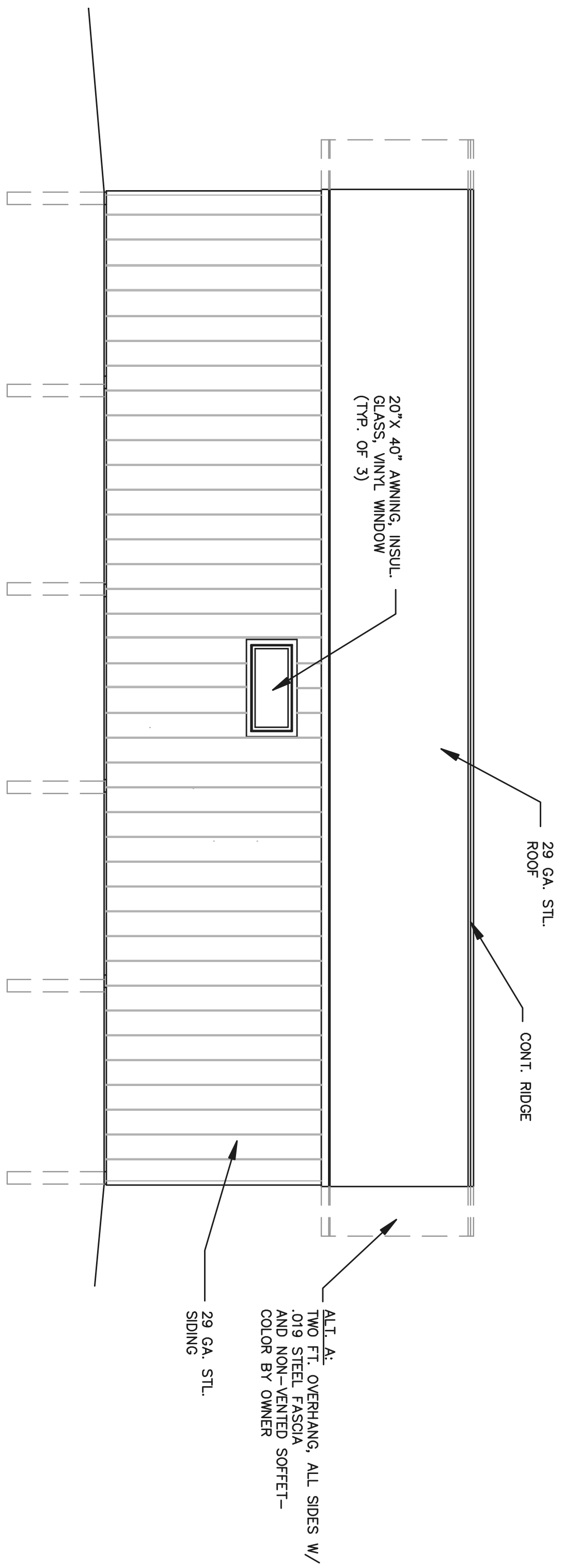
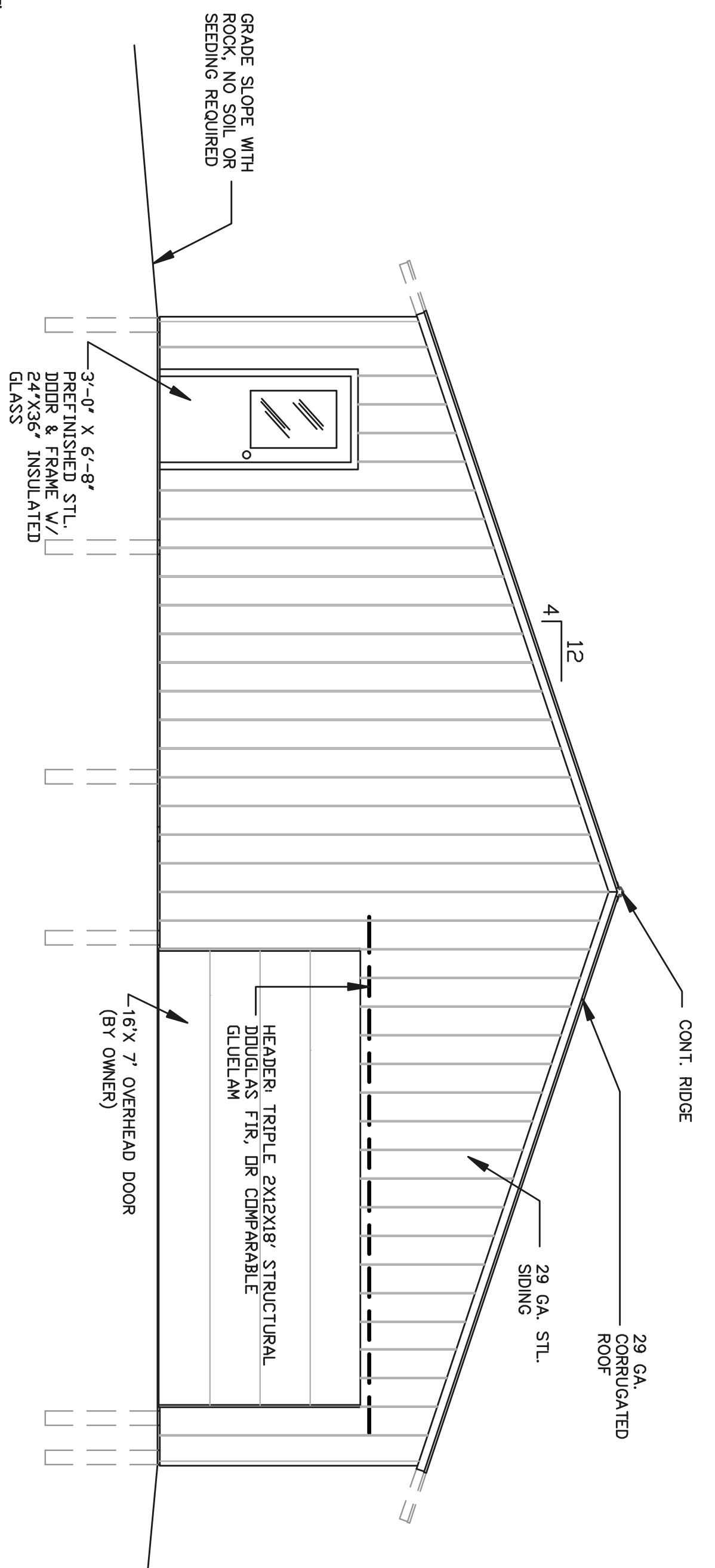


**1 BUILDING SECTION**  
1 3/8" = 1'-0"

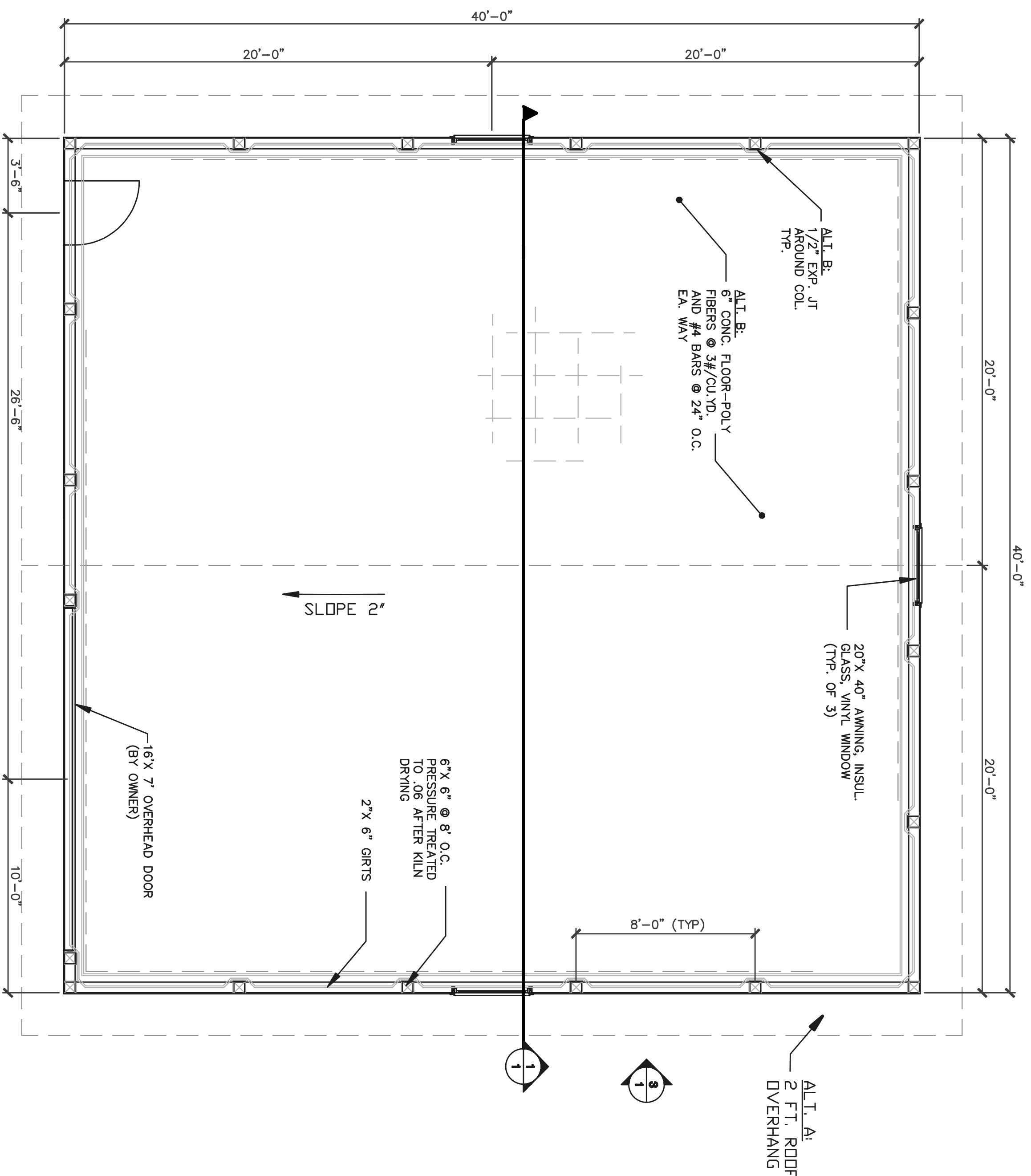
NOTE:  
REMOVE TOP SOIL AND  
BUILD UP SUB-BASE WITH  
GRANULAR MATERIAL TO 4"  
ABOVE EXISTING GRADE.



**3 SIDE ELEVATION**  
1 1/4" = 1'-0"



**2 FRONT ELEVATION**  
1 1/4" = 1'-0"



**4 FLOOR PLAN**  
1 1/4" = 1'-0"

Design By: DSB	Drawn By: JRL	Approved By: JFS	Revisions
Bid No.: NONE	Date: 8/7/09	Scale: AS NOTED	

DEPARTMENT OF PUBLIC WORKS  
DANE COUNTY WISCONSIN

STORAGE GARAGE  
DANE CO. SHOOTING RANGE  
5184 ST. HWY. 19  
TOWN OF WESTPORT, WIS.