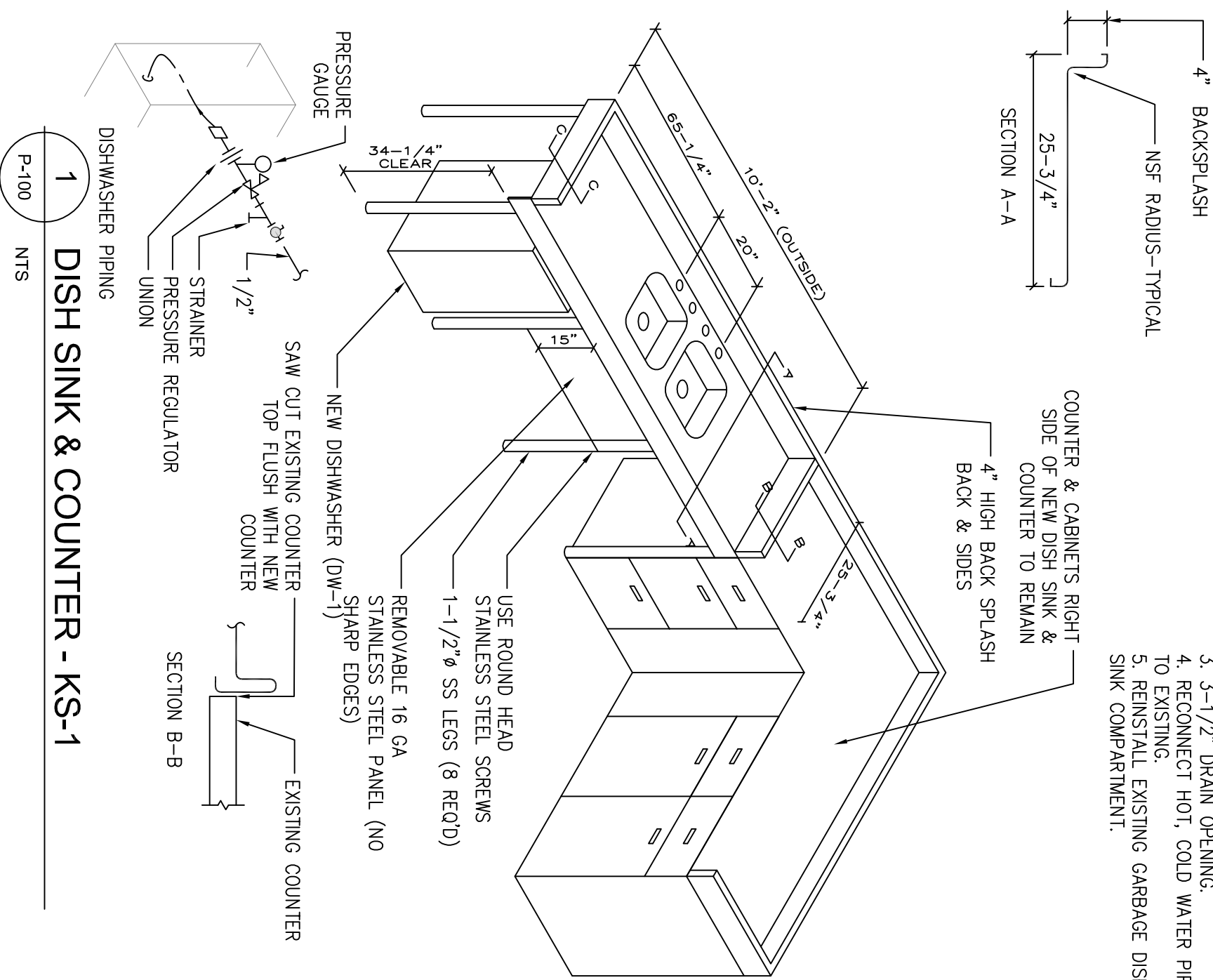
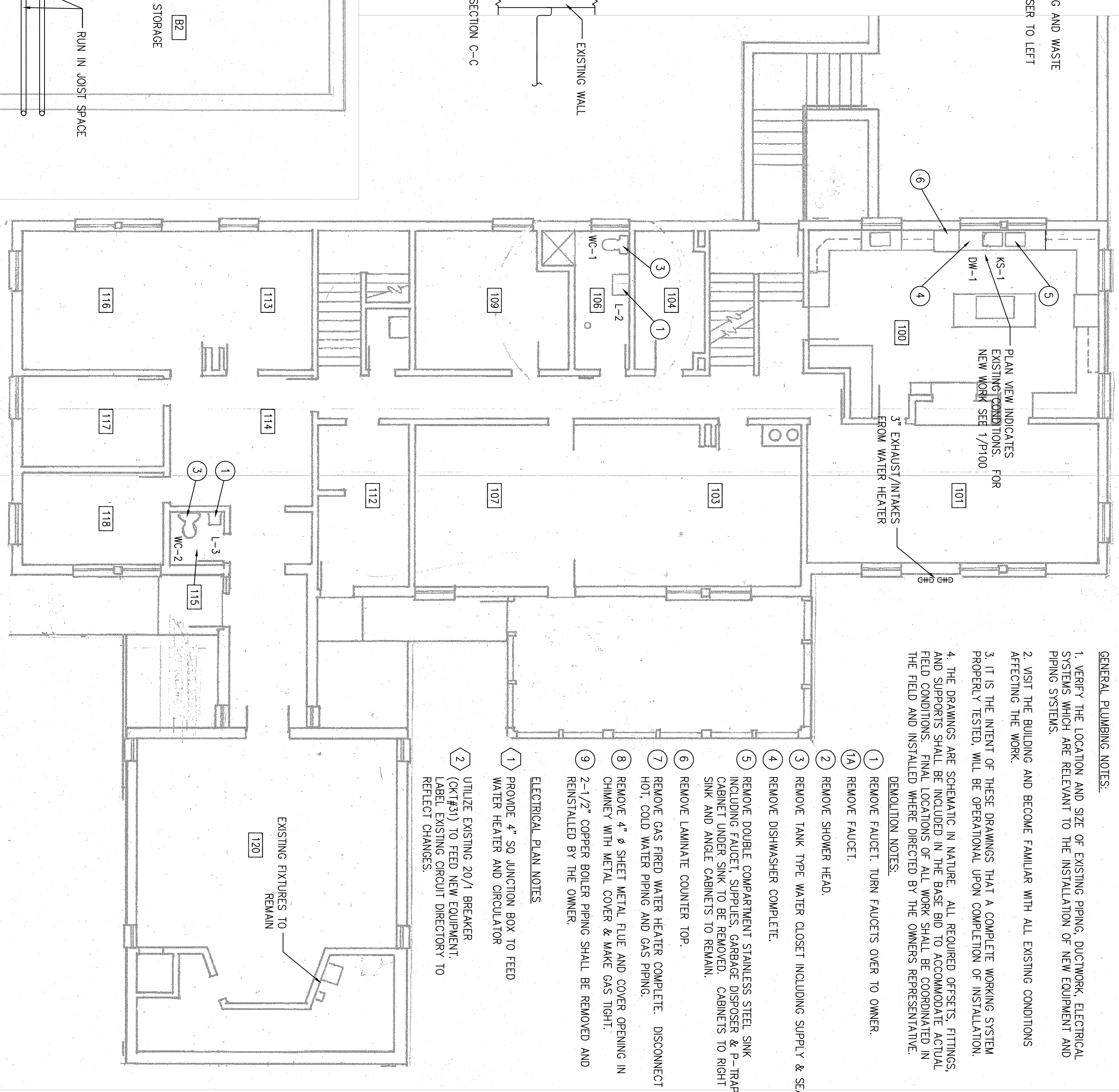


- NOTES:
1. TINO SINK BOWLS 19"x16" +/-
  2. FAUCET HOLES 48"x CRS
  3. 3-1/2" DRAIN OPENING
  4. RECONNECT HOT, COLD WATER PIPING AND WASTE TO EXISTING.
  5. REINSTALL EXISTING GARBAGE DISPOSER TO LEFT SINK COMPARTMENT.

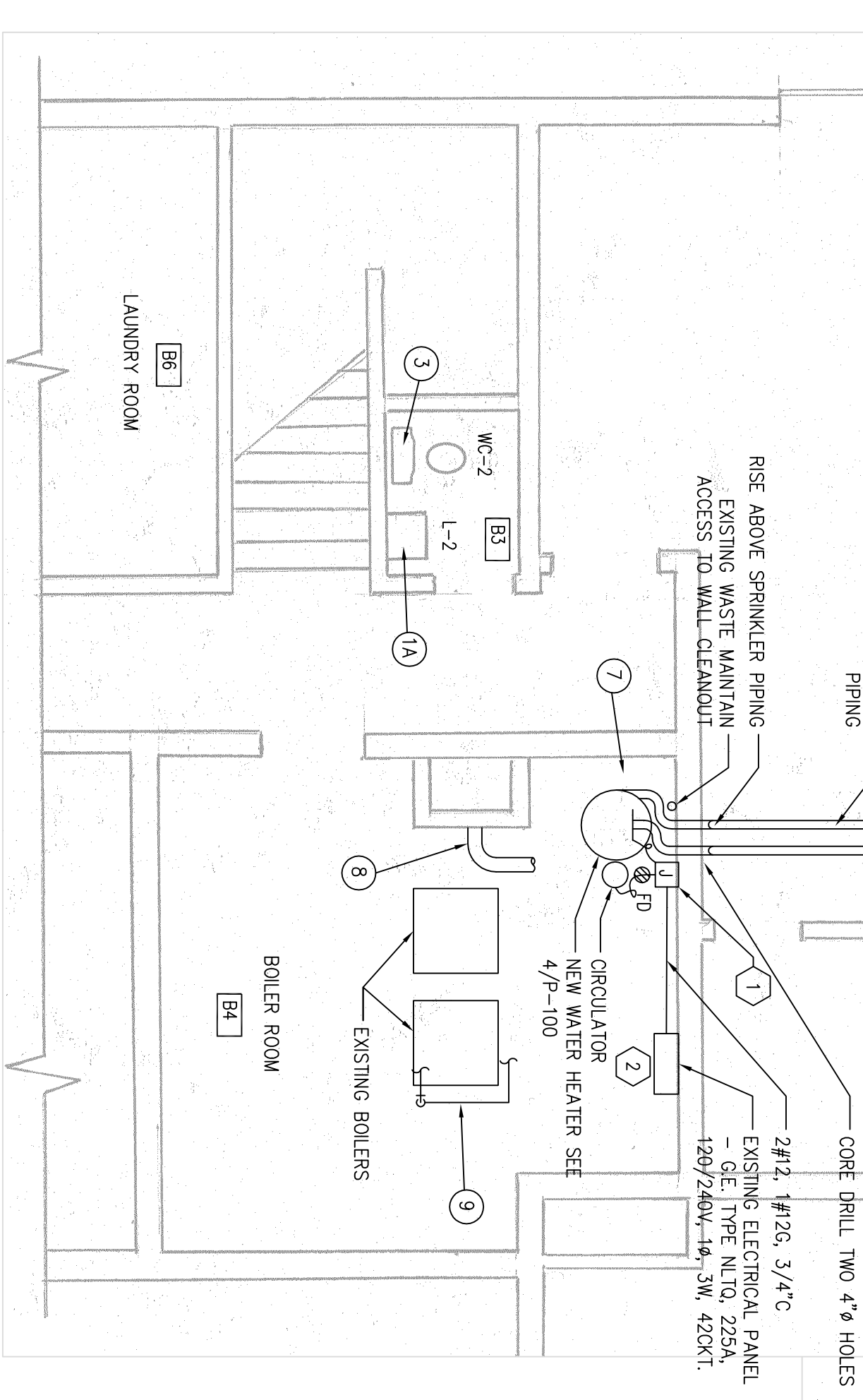


1 DISH SINK & COUNTER - KS-1  
P-100 NTS

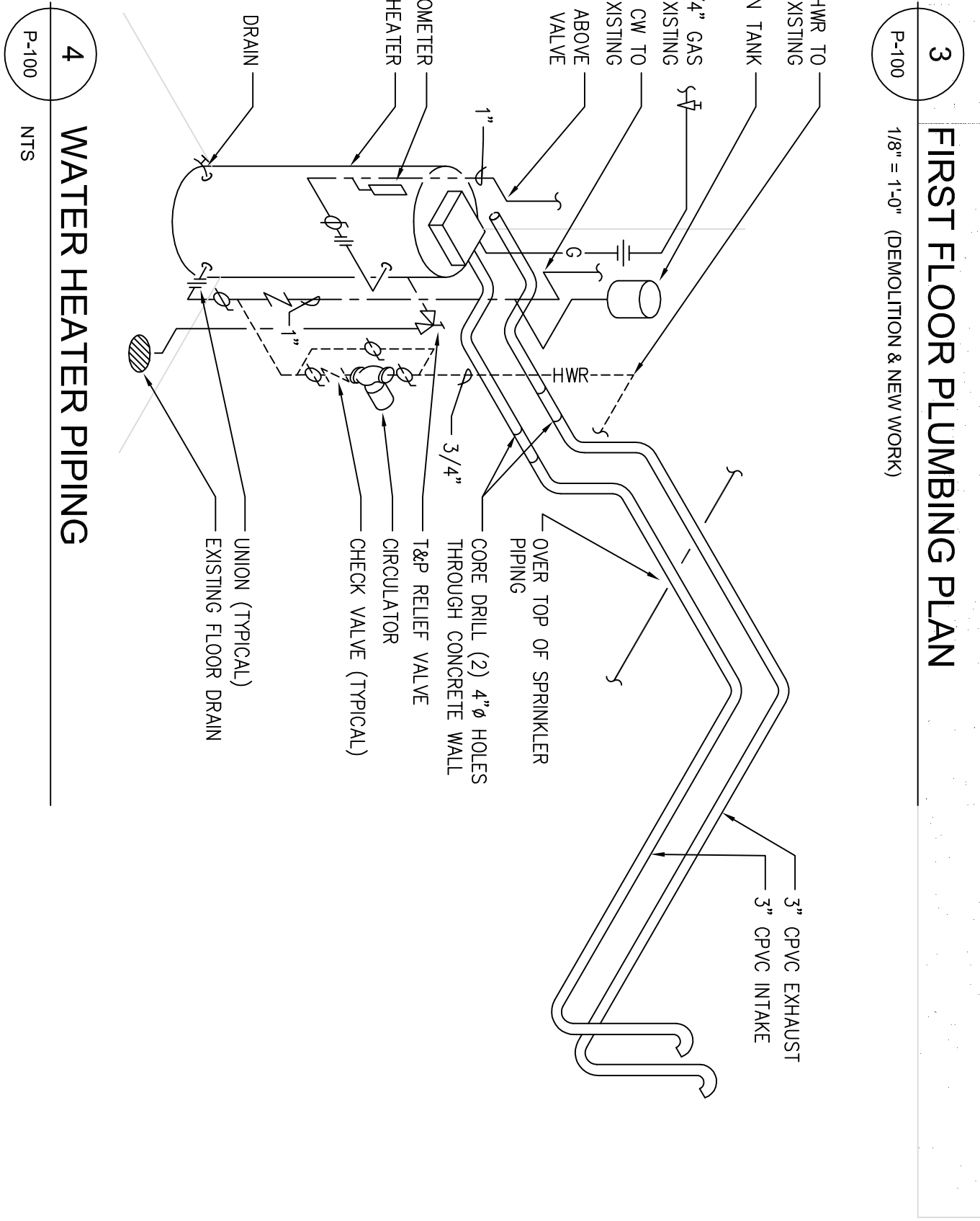
- GENERAL PLUMBING NOTES:
1. VERIFY THE LOCATION AND SIZE OF EXISTING PIPING, DUCTWORK, ELECTRICAL SYSTEMS WHICH ARE RELEVANT TO THE INSTALLATION OF NEW EQUIPMENT AND PIPING SYSTEMS.
  2. VISIT THE BUILDING AND BECOME FAMILIAR WITH ALL EXISTING CONDITIONS AFFECTING THE WORK.
  3. IT IS THE INTENT OF THESE DRAWINGS THAT A COMPLETE WORKING SYSTEM PROPERLY TESTED WILL BE OPERATIONAL UPON COMPLETION OF INSTALLATION.
  4. THE DRAWINGS ARE SCHEMATIC IN NATURE. ALL REQUIRED OFFSETS, FITTINGS AND SUPPORTS SHALL BE INCLUDED IN THE BASE BID TO ACCOMMODATE ACTUAL FIELD CONDITIONS. FINAL LOCATIONS OF ALL WORK SHALL BE COORDINATED IN THE FIELD AND INSTALLED WHERE DIRECTED BY THE OWNERS REPRESENTATIVE.
- DEMOLITION NOTES:
- 1 REMOVE FAUCET. TURN FAUCETS OVER TO OWNER.
  - 1A REMOVE FAUCET.
  - 2 REMOVE SHOWER HEAD.
  - 3 REMOVE TANK TYPE WATER CLOSET INCLUDING SUPPLY & SEAT.
  - 4 REMOVE DISHWASHER COMPLETE.
  - 5 REMOVE DOUBLE COMPARTMENT STAINLESS STEEL SINK INCLUDING FAUCET SUPPLIES, GARBAGE DISPOSER & B-TRAPS CABINET UNDER SINK TO BE REMOVED. CABINETS TO RIGHT OF SINK AND ANGLE CABINETS TO REMAIN.
  - 6 REMOVE LAMINATE COUNTER TOP.
  - 7 REMOVE GAS FRED WATER HEATER COMPLETE. DISCONNECT HOT, COLD WATER PIPING AND GAS PIPING.
  - 8 REMOVE 4" Ø SHEET METAL FLUE AND COVER OPENING IN CHIMNEY WITH METAL COVER & MAKE GAS TIGHT.
  - 9 2-1/2" COPPER BOILER PIPING SHALL BE REMOVED AND REINSTALLED BY THE OWNER.



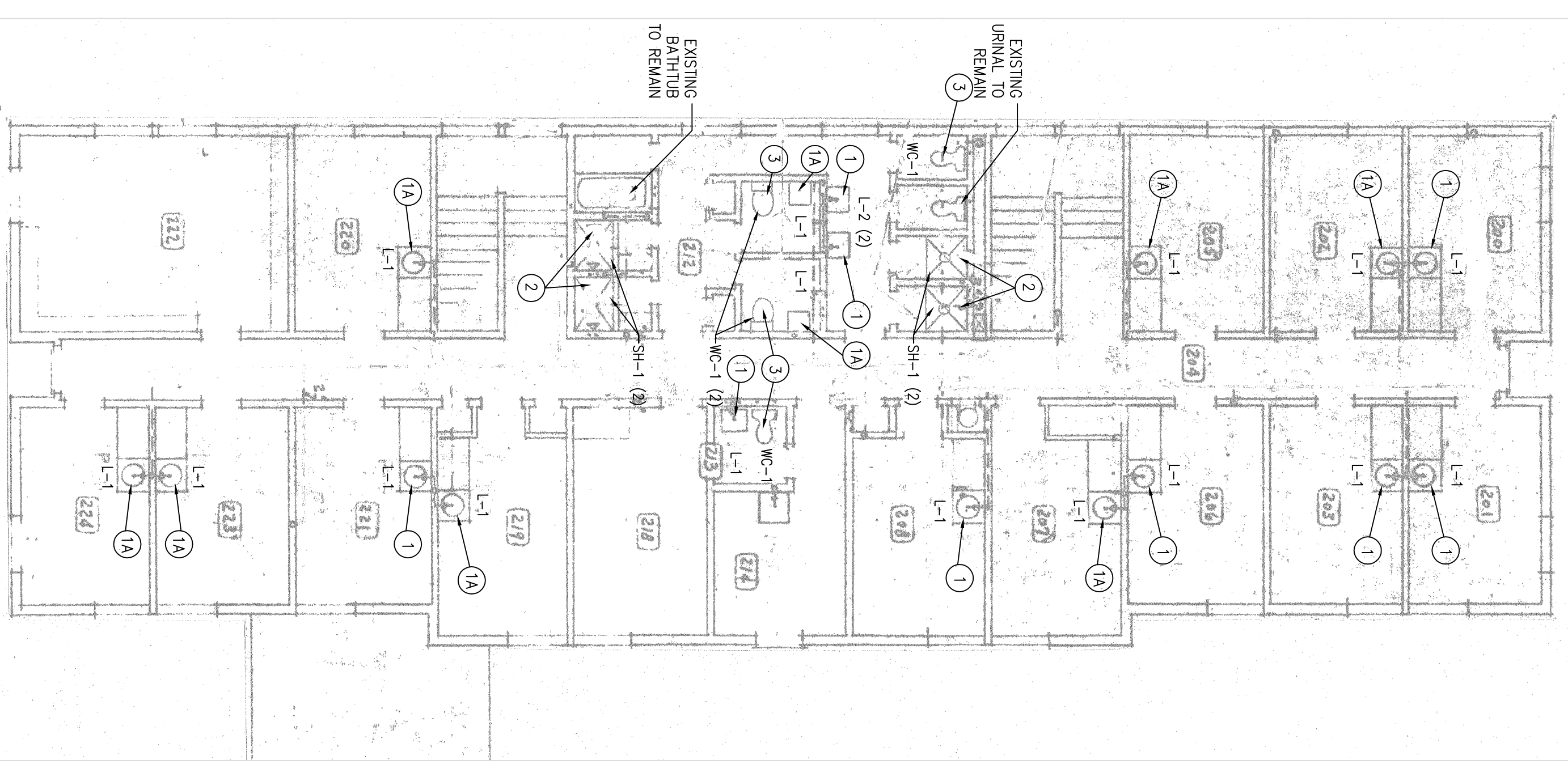
3 FIRST FLOOR PLUMBING PLAN  
P-100 1/8" = 1'-0" (DEMOLITION & NEW WORK)



2 PARTIAL BASEMENT PLUMBING PLAN  
P-100 1/4" = 1'-0"



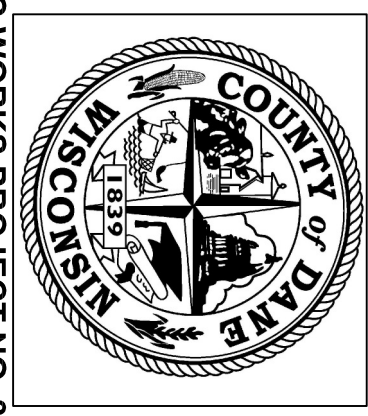
4 WATER HEATER PIPING  
P-100 NTS



5 SECOND FLOOR PLUMBING PLAN  
P-100 1/8" = 1'-0" (DEMOLITION & NEW WORK)

SYMBOL	DESCRIPTION	SYMBOL	DESCRIPTION
BT	BATHUB	BT	BATHUB
CG	COLD WATER	CG	COLD WATER
HW	HOT WATER	HW	HOT WATER
CM	COLD WATER RETURN (HWR)	CM	COLD WATER RETURN (HWR)
GM	GAS MAIN	GM	GAS MAIN
GP	GAS PIPING	GP	GAS PIPING
CD	COLD WATER RISER DOWN	CD	COLD WATER RISER DOWN
FD	FLOOR DRAIN	FD	FLOOR DRAIN
FO	FLOOR CLEAN OUT	FO	FLOOR CLEAN OUT
GC	GENERAL CONTRACTOR	GC	GENERAL CONTRACTOR
HM	HOT WATER POINT OF CONNECTION	HM	HOT WATER POINT OF CONNECTION
HW	HOT WATER	HW	HOT WATER
IE	INSTANTANEOUS WATER HEATER	IE	INSTANTANEOUS WATER HEATER
MB	MOP BASIN	MB	MOP BASIN
PC	PLUMBING CONTRACTOR	PC	PLUMBING CONTRACTOR
SH	SHOWER	SH	SHOWER
KS	KITCHEN SINK	KS	KITCHEN SINK
WC	WASTE WATER CLOSET	WC	WASTE WATER CLOSET

**SPD**  
SELECT PLUMBING DESIGN, LLC  
4564 EVERGREEN ROAD  
MIDDLETON, WI 53552  
(608) 836-9674  
DCHAM@TDS.NET  
PROJECT NO. 14-003



DANE COUNTY DEPARTMENT OF PUBLIC WORKS HIGHWAY AND TRANSPORTATION PUBLIC WORKS ENGINEERING DIVISION 1919 ALLANT ENERGY CENTER WAY MADISON, WI 53713

PUBLIC WORKS PROJECT NO. 314016

Notes:

Date	Issuance/Revisions	Symbol
7/18/14	ISSUED FOR CONSTRUCTION	
7/11/14	ISSUED FOR 100% REVIEW	
6/9/14	ISSUED FOR 95% REVIEW	

DANE COUNTY JUVENILE COURT PROGRAM  
JUVENILE SHELTER HOME PLUMBING FIXTURES & EQUIPMENT UPGRADES  
2402 ATWOOD AVE.  
MADISON, WI 53704

PLUMBING/ELECTRICAL FLOOR PLANS AND DETAILS  
Drawing No. **P-100**  
SPD PROJECT NUMBER 14-003  
Date 6/9/14  
DCH