

**DANE COUNTY DEPT. OF
PUBLIC WORKS, HIGHWAY &
TRANSPORTATION**

1919 Alliant Energy Center Way
Madison, Wisconsin 53713
Office: 608/266-4018 ♦ Fax: 608/267-1533
Public Works Engineering Division

ADDENDUM

December 10, 2019

ATTENTION ALL REQUEST FOR BID (RFB) HOLDERS

RFB NO. 319034 - ADDENDUM NO. 2

FOURTH FLOOR OFFICES REMODEL, SUITES 418, 419 & 425

**BIDS DUE: TUESDAY, DECEMBER 17, 2019, 2:00 PM. DUE DATE AND
TIME ARE NOT CHANGED BY THIS ADDENDUM.**

This Addendum is issued to modify, explain or clarify the original Request for Bid (RFB) and is hereby made a part of the RFB. Please attach this Addendum to the RFB.

PLEASE MAKE THE FOLLOWING CHANGES:

1. Sheet E0.0

Delete current Sheet E0.0 (from Addendum No. 1); replace with new Sheet E0.0, issued with this Addendum. Only modifications to Communication Device Schedule and Detail 1 are included on this new Sheet.

If any additional information about this Addendum is needed, please call Scott Carlson at 608/266-4179, carlson.scott@countyofdane.com.

Sincerely,
Scott Carlson
Project Manager

Enclosures:
Sheet E0.0

H:\Shared\ENGINEERING DIVISION\Scott Carlson\319034 - CCB 4th Flr Offices Remodel\03 - Addendum\319034-Addm2.docx

LUMINAIRE SCHEDULE

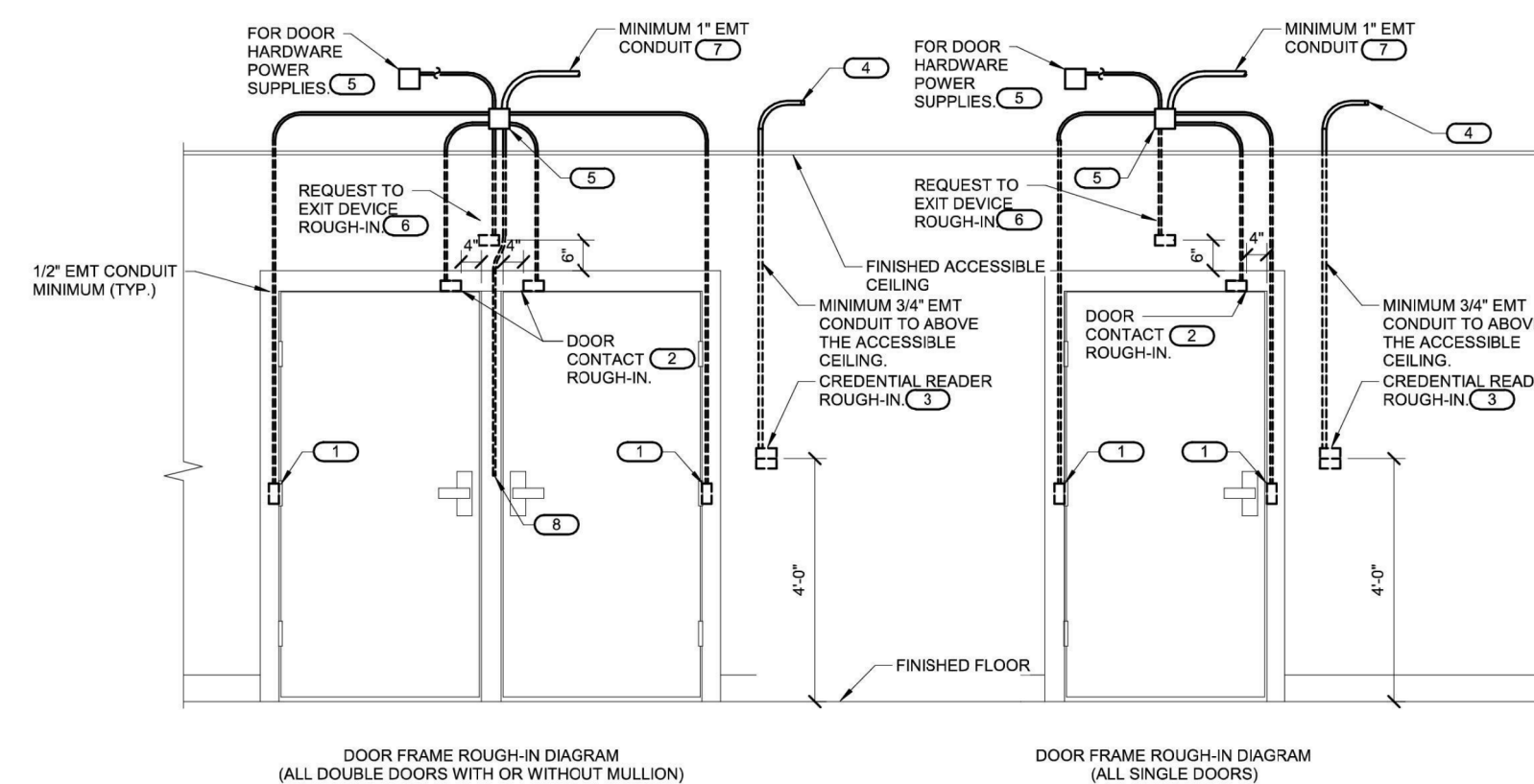
DESIGNATION	DESCRIPTION	DEPTH	LUMENS	WATTS	LAMP TYPE	COLOR TEMP	MANUFACTURER	MODEL #	NOTES:
A	2.5" RECESSED LED DOWNLIGHT	5-15/16"	500 lm	7 W	LED	4000K	PORTFOLIO	LDA2B05WFL8040D010 2LBDL2LI	EQUALS BY PHILIPS, PRESCOLITE, ACUITY, OR APPROVED EQUAL.
D	2X2 RECESSED LED	3-1/4"	2470 lm	20 W	LED	4000K	METALUX	22CZ-LD5-24-UNV-L840-CD1-U	EQUALS BY PHILIPS, LITHONIA, DAYBRITE, OR APPROVED EQUAL.
E1	UNIVERSAL MOUNT LED EXIT	-	-	5 W	LED	-	SURE-LITES	APLXRG	EQUALS BY FAILSAFE, CHLORIDE, DUAL-LITE, OR APPROVED EQUAL.
F24	24" LED UNDERCABINET LIGHT W/OCCUPANCY SENSOR	3/4"	627 lm	11 W	LED	4000K	HALO	HU30ADV24P	PROVIDE DAISY CHAIN CONNECTORS, POWER CORDS, AND SPLICE BOXES, AS REQUIRED. EQUALS BY LITHONIA, DAYBRITE, AFX, OR APPROVED EQUAL.
F36	36" LED UNDERCABINET LIGHT W/OCCUPANCY SENSOR	3/4"	824 lm	14 W	LED	4000K	HALO	HU30ADV36P	PROVIDE DAISY CHAIN CONNECTORS, POWER CORDS, AND SPLICE BOXES, AS REQUIRED. EQUALS BY LITHONIA, DAYBRITE, AFX, OR APPROVED EQUAL.

LIGHTING CONTROL SCHEDULE

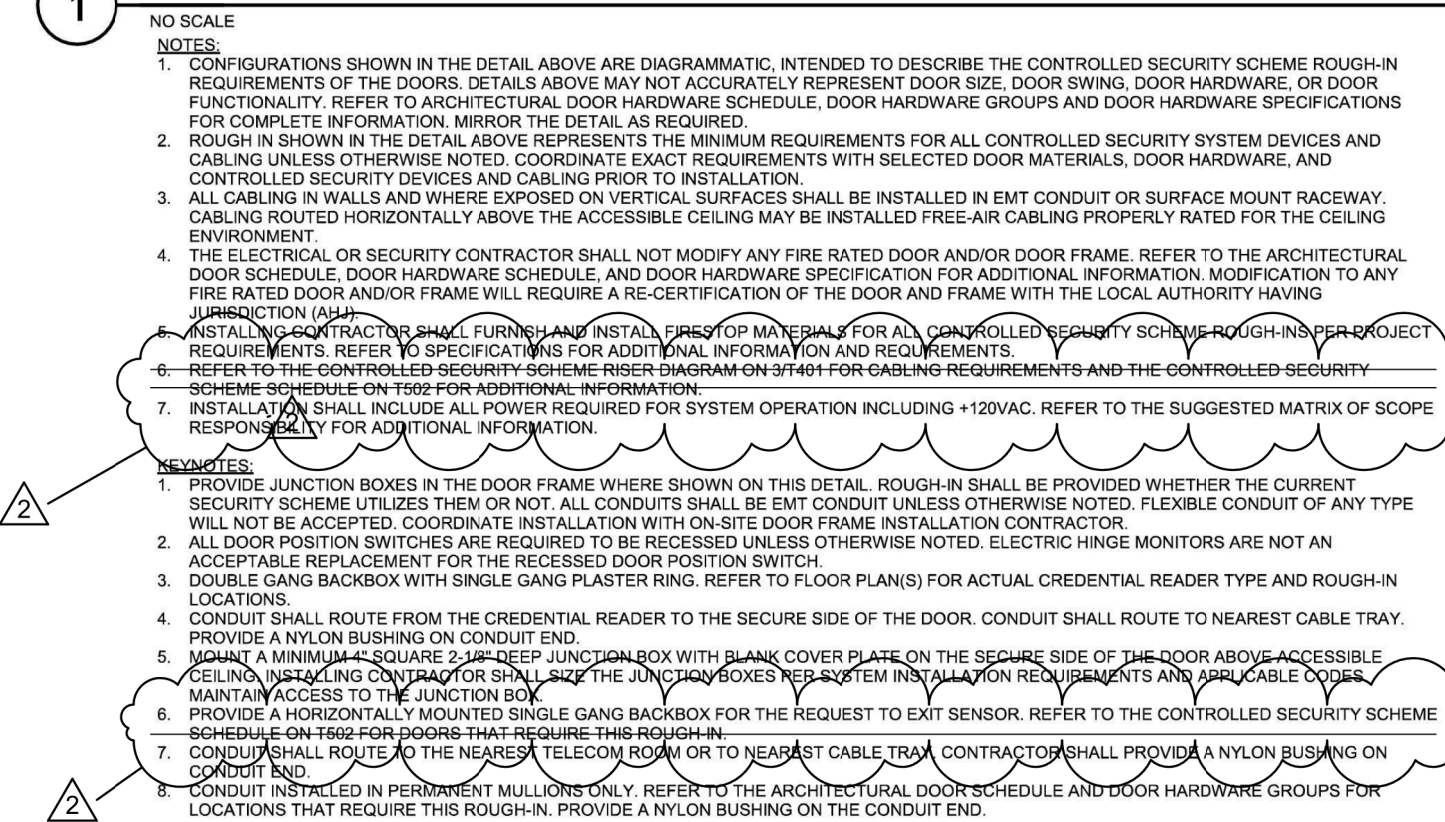
SYMBOL	DESCRIPTION	NOTES
↓	0-10V DIMMER SWITCH	SINGLE POLE 0-10V DIMMER SWITCH. MOUNT AT 46" TO CENTER UNLESS OTHERWISE NOTED
↓ 3	0-10V DIMMER SWITCH 3-WAY	THREE WAY 0-10V DIMMER SWITCH. MOUNT AT 46" TO CENTER UNLESS OTHERWISE NOTED
↓ 4	FOUR WAY SWITCH	MOUNT AT 46" TO CENTER UNLESS OTHERWISE NOTED
↓	SINGLE POLE SWITCH	MOUNT AT 46" TO CENTER UNLESS OTHERWISE NOTED
↓ 3	THREE WAY SWITCH	MOUNT AT 46" TO CENTER UNLESS OTHERWISE NOTED
⊙ A	TYPE A OCCUPANCY SENSOR	DUAL TECHNOLOGY LOW VOLTAGE 360 DEGREE STANDARD RANGE CEILING SENSOR W/ ISOLATED LOW VOLTAGE RELAY. WATTSTOPPER #DT-300 SERIES OR EQUAL.
⊙ B	TYPE B DIMMABLE VACANCY SENSOR	PIR SINGLE RELAY LINE VOLTAGE WALL SENSOR WITH SELECTABLE SETTINGS FOR OCCUPANCY OR VACANCY. MOUNT AT 46" TO CENTER UNLESS OTHERWISE NOTED. WATTSTOPPER #PW-311 SERIES OR EQUAL.

POWER DEVICE SCHEDULE

SYMBOL	CALLOUT	NOTES
⊕	DOUBLE DUPLEX RECEPTACLE	MOUNT @ 18" TO CENTER UNLESS NOTED OTHERWISE
⊕	DUPLEX RECEPTACLE	MOUNT @ 18" TO CENTER UNLESS NOTED OTHERWISE
⊐	POKE THRU	WIREFLO #44TCP2 SERIES POKE THRU, OR EQUAL, WITH 1 PREWIRED DUPLEX RECEPTACLE AND ACCOMMODATIONS FOR REQUIRED COMMUNICATION DEVICES. PROVIDE (1) 1-1/2" CONDUIT FOR POWER AND (1) 3/4" CONDUIT FOR LOW VOLTAGE. COORDINATE CONCRETE WORK WITH GENERAL CONTRACTOR.
○	FURNITURE CONNECTION	PROVIDE POWER AND DATA WHIPS TO FURNITURE AS REQUIRED.
⊕	ISOLATED GROUND DUPLEX RECEPTACLE	MOUNT @ 18" TO CENTER UNLESS NOTED OTHERWISE
⊕	GFI DUPLEX RECEPTACLE	MOUNT @ 18" TO CENTER UNLESS NOTED OTHERWISE
U ⊕	USB RECEPTACLE	4 PORT USB RECEPTACLE MOUNT @ 18" TO CENTER UNLESS NOTED OTHERWISE
⊕	GFI RAISED DUPLEX RECEPTACLE	MOUNT @ 46" TO CENTER UNLESS NOTED OTHERWISE
⊕	RAISED DUPLEX RECEPTACLE	MOUNT @ 46" TO CENTER UNLESS NOTED OTHERWISE



CONTROLLED SECURITY SCHEME DOOR ROUGH-IN DETAIL



TELE/DATA SCHEDULE

SYMBOL	CALLOUT	NOTES
▷	RAISED TELE/DATA	COMMUNICATIONS OUTLET WITH TWO(2) CAT6 CABLES/JACKS (UNLESS INDICATED OTHERWISE) - 4" SQUARE BOX WITH EXTENSION RING FOR A SINGLE GANG DEVICE AND A 1-1/4" CONDUIT TO ACCESSIBLE CEILING IN CORRIDOR. PROVIDE A THREADED BUSHING ON THE CONDUIT END. MOUNTED AT 48" AFF OR AT HEIGHT ADJACENT TO RECEPTACLE UNLESS NOTED OTHERWISE.
▷	TELE/DATA	COMMUNICATIONS OUTLET WITH TWO(2) CAT6 CABLES/JACKS (UNLESS INDICATED OTHERWISE) - 4" SQUARE BOX WITH EXTENSION RING FOR A SINGLE GANG DEVICE AND A 1-1/4" CONDUIT TO ACCESSIBLE CEILING IN CORRIDOR. PROVIDE A THREADED BUSHING ON THE CONDUIT END. MOUNTED AT 18" AFF UNLESS NOTED OTHERWISE.
▷	WIRELESS ACCESS POINT	WIRELESS ACCESS POINT WITH TWO(2) CAT6 CABLES/JACKS UNLESS NOTED OTHERWISE. MOUNTED IN ACCESSIBLE CEILING.

COMMUNICATIONS DEVICE SCHEDULE

SYMBOL	DESCRIPTION	NOTES
⊕	SECURITY CARD READER	EC/ACS TO PROVIDE DEVICE, CABLING, RACEWAY AND JUNCTION BOX PER SPECIFICATIONS AND DETAIL 1 THIS SHEET.
⊕	SECURITY ELECTRIC DOOR STRIKE	EC/ACS TO PROVIDE DEVICE, CABLING, RACEWAY AND JUNCTION BOX PER SPECIFICATIONS AND DETAIL 1 THIS SHEET.

FIRE ALARM DEVICE SCHEDULE

SYMBOL	DESCRIPTION	NOTES
⊕	AUDIO VISUAL ANNUNCIATOR	FA SYSTEM SPEAKER/STROBE ANNUNCIATION DEVICE W/ADJUSTABLE CANDELA SETTINGS. ADJUST CANDELA TO SETTING INDICATED ON AHJ APPROVED FA PLAN.
⊕ H	HEAT DETECTOR	FA SYSTEM CEILING MOUNTED HEAT DETECTOR
⊕	PULLSTATION	FIRE ALARM MANUAL STATION. LOCATE IN PATH OF EGRESS WITHIN 5' OF EGRESS DOOR
⊕ S	SMOKE DETECTOR	FA SYSTEM CEILING SMOKE DETECTOR

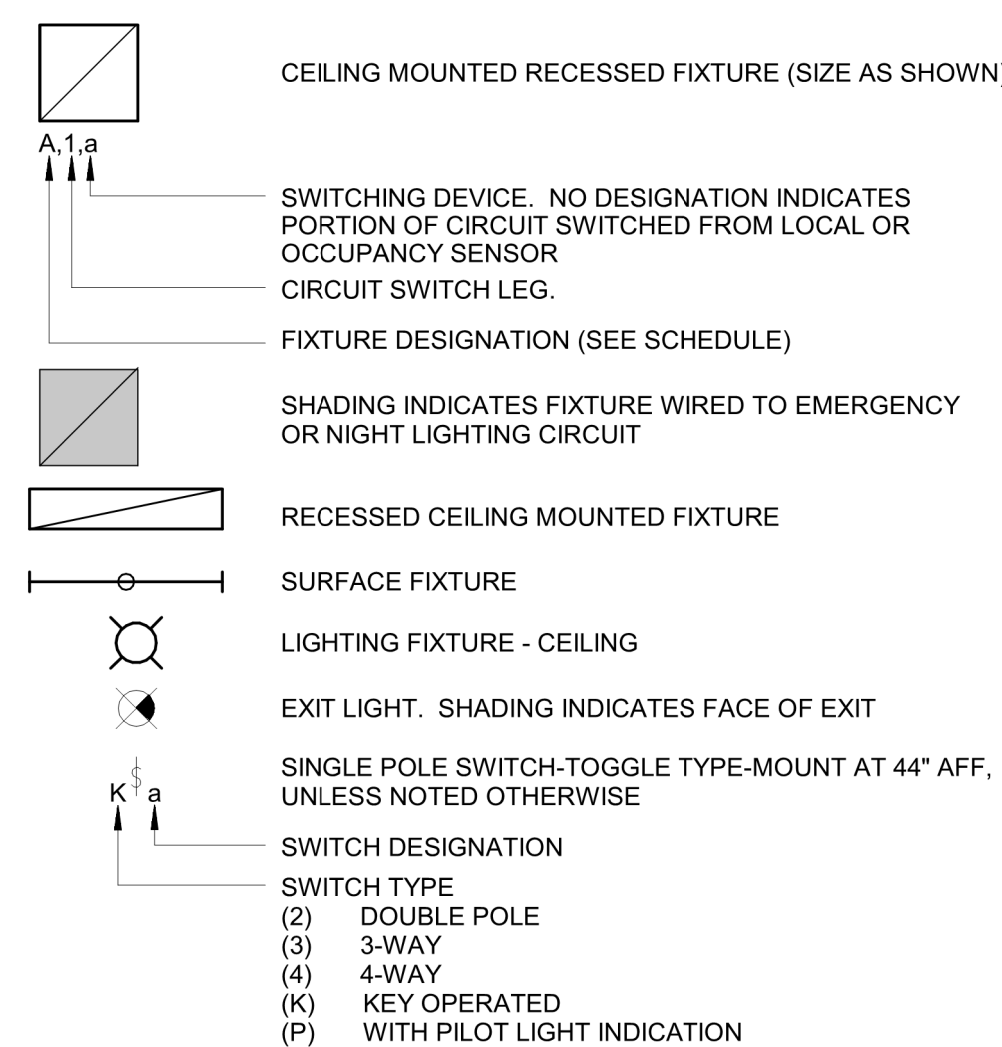
EQUIPMENT SCHEDULE

SYMBOL	CALLOUT	DESCRIPTION	VOLTS	LOAD	AMPS	HP	PANEL	CIRCUIT	NOTES
⊕ M	TF-1	TRANSFER FAN - 4TH	120 V	218 VA	2 A	F	4B RIGHT	14	PROVIDE DISCONNECT AT UNIT.
⊕	IT-1	IT RACK	208 V	4160 VA	20 A		4B RIGHT	16,18	PROVIDE NEMA L6-30R 30A/2P TWIST LOCK RECEPTACLE.
⊕	IT-1	IT RACK	208 V	4160 VA	20 A		4B RIGHT	20,22	PROVIDE NEMA L6-30R 30A/2P TWIST LOCK RECEPTACLE.
⊕	IT-1	IT RACK	208 V	4160 VA	20 A		4B RIGHT	24,26	PROVIDE NEMA L6-30R 30A/2P TWIST LOCK RECEPTACLE.
⊕	IT-1	IT RACK	208 V	4160 VA	20 A		4B RIGHT	28,30	PROVIDE NEMA L6-30R 30A/2P TWIST LOCK RECEPTACLE.
⊕	IT-1	IT RACK	208 V	4160 VA	20 A		4B RIGHT	32,34	PROVIDE NEMA L6-30R 30A/2P TWIST LOCK RECEPTACLE.

ELECTRICAL SHEET INDEX

E0.0	SYMBOLS AND ABBREVIATIONS - ELECTRICAL
E1.0	DEMOLITION PLAN - SOUTH - LIGHTING
E1.1	DEMOLITION PLAN - NORTH - LIGHTING
E1.2	DEMOLITION PLAN - SOUTH - POWER/SYSTEMS
E1.3	DEMOLITION PLAN - NORTH - POWER/SYSTEMS
E2.0	NEW WORK PLAN - SOUTH - LIGHTING
E2.1	NEW WORK PLAN - NORTH - LIGHTING
E2.2	NEW WORK PLAN - SOUTH - POWER/SYSTEMS
E2.3	NEW WORK PLAN - NORTH - POWER/SYSTEMS

LIGHTING



GENERAL:

⊕ OR ⊕	SEE NOTE SYMBOL
(E)	EXISTING TO REMAIN
⊕	ELECTRICAL PANEL
⊕	PUSHBUTTON
⊕	DOOR BELL CHIME
ELR	ELECTRIC LOCK RELEASE
⊕	EXISTING SPEAKER

DIMENSIONIV
Madison Design Group

architecture · interior design · planning

6515 Grand Teton Plaza, Suite 120

Madison, Wisconsin 53719

p608.829.4444 f608.829.4445 dimensionivmadison.com

DANE COUNTY

DEPARTMENT OF
PUBLIC WORKS, HIGHWAY
& TRANSPORTATION

1919 Alliant Energy Center Way
Madison, Wisconsin 53713

CITY-COUNTY
BUILDING 4TH
FLOOR OFFICES
REMODEL, SUITES
418, 419 & 425

210 MARTIN LUTHER KING JR BLVD
MADISON, WI 53703

DATE OF ISSUE: 10/28/19

REVISIONS:

1	Addendum #1	12/10/2019
2	Addendum #2	12/10/2019

PROJECT # 19007
DCPW RFB # 319034

FOURTH FLOOR

SYMBOLS AND
ABBREVIATIONS -
ELECTRICAL

E0.0

JDR ENGINEERING, INC.

5525 NOBEL DRIVE

SUITE 110

MADISON, WI 53711

PH: 608.277.1728 FAX: 608.271.7046

JDR PROJECT NO. 19.0207