



**DANE COUNTY DEPT. OF
PUBLIC WORKS, HIGHWAY &
TRANSPORTATION**

1919 Alliant Energy Center Way
Madison, Wisconsin 53713
Office: 608/266-4018 ♦ Fax: 608/267-1533
Public Works Engineering Division
Public Works Solid Waste Division

ADDENDUM

WEDNESDAY, JANUARY 17, 2018

ATTENTION ALL REQUEST FOR BID (RFB) HOLDERS

RFB NO. 317035 - ADDENDUM NO. 1

COLISEUM PERFORMANCE AREA LIGHTING & RIGGING UPGRADES

**BIDS DUE: TUESDAY, FEBRUARY 6, 2018, 2:00 PM. DUE DATE AND
TIME ARE NOT CHANGED BY THIS ADDENDUM.**

This Addendum is issued to modify, explain or clarify the original Request for Bid (RFB) and is hereby made a part of the RFB. Please attach this Addendum to the RFB.

PLEASE MAKE THE FOLLOWING CHANGES:

1. Section 26 01 01 – Sports and Event Lighting System Scope Design Narrative

Page 6 – Item 8.b

Delete existing Item 8.b and replace with the following: “All demolition material shall be property of the contractor and removed from site.”

Page 6 – Item 8.d

Add item 3 as follows:

“3. Demolition of center cage spotlights. Center cage spotlights and cage structure shall be removed. Existing cage spotlight wiring, contactors on catwalk and control switches in lighting booth shall be removed. Blank off switch with Brushed Stainless Steel cover plate. Cage structure will be removed by GC.”

2. Sheet E100

Modify current Sheet E100 as follows: revise keyed note 13 as follows:

“Existing east and west cage spotlights, 8 total, are currently switched in pairs via switches in the lighting booth. Provide relays in the booth to control the existing control circuit from the new lighting control system. Existing switches shall be removed and blanked off with Brushed Stainless Steel cover plate. Existing contactors, control wire and power wiring shall remain in use.”

3. Sheet E101

Modify current Sheet E101 as follows: revise keyed note 2 as follows:

“Existing follow spotlights, 8 total as well as east and west cage spotlights, 8 total, to remain. Center cage spotlights and cage structure shall be removed. Existing cage spotlight wiring, contactors on catwalk and control switches in lighting booth shall be removed. Blank off switch with Brushed Stainless Steel cover plate”

4. Exhibit 1

Delete current Exhibit 1; replace with new Exhibit 1, issued with this Addendum.

5. Exhibit 2

Delete current Exhibit 2; replace with new Exhibit 2, issued with this Addendum.

PLEASE NOTE THE FOLLOWING SUBMITTED QUESTIONS:

Q1: The existing fall protection and the proposed fall protection shown on detail 1/S3 of the contract plans is the Uni-8 system by 3M/Capital Safety. Will 3M/Capital Safety be added to the list of approved manufactures?

A1: It isn't necessary to update the spec for an alternate. ZS approves the proposed fall protection system as an alternate.

Q2: What is the desired quantity of harnesses and lanyards?

A2: Harnesses and lanyards are not required to be provided in the specifications. The Owner typically purchases these separately and their riggers likely have a sufficient number of these presently.

Q3: The specification requires a rescue plan. Is rescue equipment is required?

A3: No additional rescue equipment is required with this project. Owner shall develop separate rescue plan outside of this project in the case of a fall event.

Q4: Is drilling and bolting the fall protection brackets directly to the existing rib beam acceptable?

A4: No drilling permitted. Use Lindapter or approved equal as specified.

Q5: The depicted product manufacturer does not require post installation load testing, please confirm that load testing is not required.

A5: Load testing is not required.

If any additional information about this Addendum is needed, please call Eric Urtes, AIA, at 608/266-4798, urtes.eric@countyofdane.com.

Sincerely,

J. Eric Urtes, AIA

Project Manager

Enclosures:

Exhibit 1

Exhibit 2

EQUIPMENT LIST FOR AREAS SHOWN								
Pole			Luminaires					
QTY	LOCATION	SIZE	GRADE ELEVATION	MOUNTING HEIGHT	LUMINAIRE TYPE	QTY / POLE	THIS GRID	OTHER GRIDS
24	A1-A6 B1-B6 C1-C6 D1-D6		62'	62'	TLC-LED-400	4	4	0
24	TOTALS					96	96	0

EXHIBIT 1

Madison Coliseum - Dane County Madison, WI

GRID SUMMARY	
Name:	Hockey
Size:	200' x 85'
Spacing:	10.0' x 10.0'
Height:	5.0' above grade

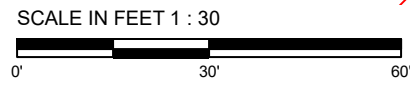
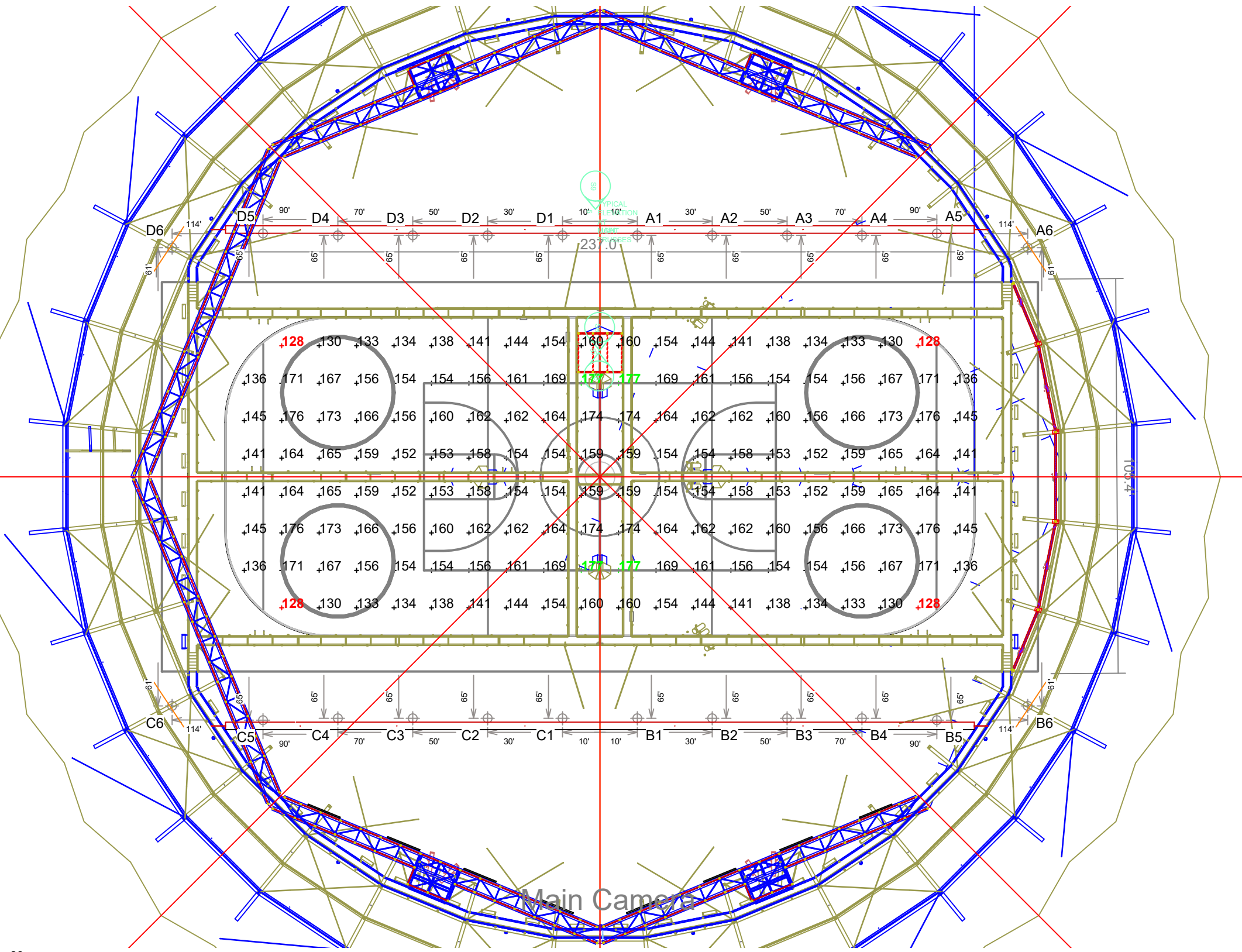
ILLUMINATION SUMMARY			
MAINTAINED HORIZONTAL FOOTCANDLES			
Entire Grid			
Guaranteed Average:	125		
Scan Average:	155.36		
Maximum:	177		
Minimum:	128		
Avg / Min:	1.21		
Guaranteed Max / Min:	1.5		
Max / Min:	1.38		
UG (adjacent pts):	1.34		
CU:	0.63		
No. of Points:	156		
LUMINAIRE INFORMATION			
Color / CRI:	5700K - 75 CRI		
Luminaire Output:	38,600 lumens		
No. of Luminaires:	96		
Total Load:	38.4 kW		
Lumen Maintenance			
Luminaire Type	L90 hrs	L80 hrs	L70 hrs
TLC-LED-400	61,000	>72,000	>72,000
Reported per TM-21-11. See luminaire datasheet for details.			

Guaranteed Performance: The ILLUMINATION described above is guaranteed per your Musco Warranty document and includes a 0.95 dirt depreciation factor.

Field Measurements: Individual field measurements may vary from computer-calculated predictions and should be taken in accordance with IESNA RP-6-15.

Electrical System Requirements: Refer to Amperage Draw Chart and/or the "Musco Control System Summary" for electrical sizing.

Installation Requirements: Results assume ± 3% nominal voltage at line side of the driver and structures located within 3 feet (1m) of design locations.



Pole location(s) Ⓢ dimensions are relative to 0,0 reference point(s) ⊗



EQUIPMENT LIST FOR AREAS SHOWN									
Pole			Luminaires						
QTY	LOCATION	SIZE	GRADE ELEVATION	MOUNTING HEIGHT	LUMINAIRE TYPE	QTY / POLE	THIS GRID	OTHER GRIDS	
24	A1-A6 B1-B6 C1-C6 D1-D6		62'	62'	TLC-LED-400	4	4	0	
24	TOTALS						96	96	0

Madison Coliseum - Dane County Madison, WI

GRID SUMMARY	
Name:	Hockey
Size:	200' x 85'
Spacing:	10.0' x 10.0'
Height:	5.0' above grade

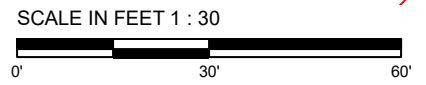
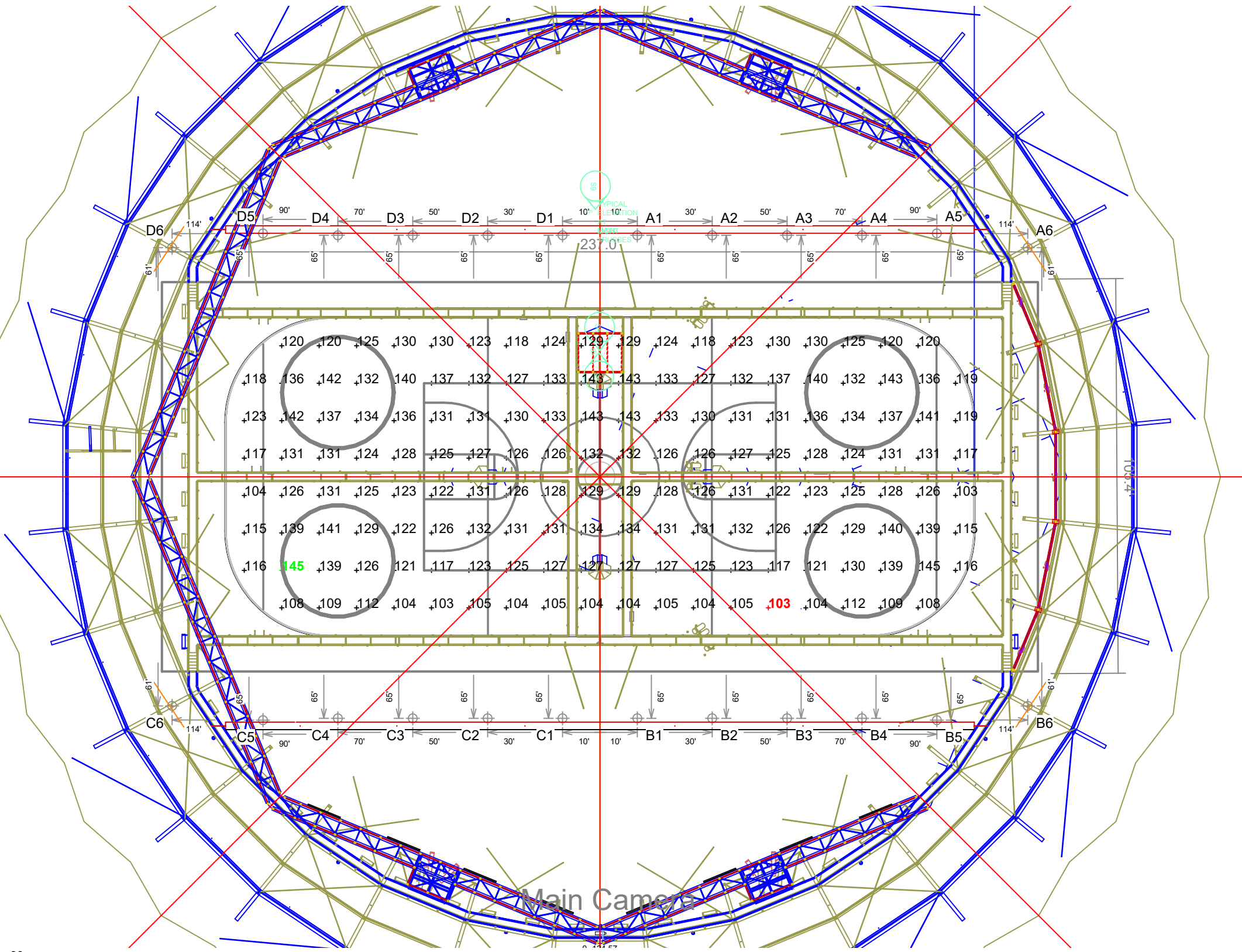
ILLUMINATION SUMMARY			
MAINTAINED TV FOOTCANDLES: Main Camera			
Entire Grid			
Guaranteed Average:	125		
Scan Average:	126.00		
Maximum:	145		
Minimum:	103		
Avg / Min:	1.23		
Guaranteed Max / Min:	1.5		
Max / Min:	1.41		
UG (adjacent pts):	1.35		
CU:	0.63		
No. of Points:	156		
LUMINAIRE INFORMATION			
Color / CRI:	5700K - 75 CRI		
Luminaire Output:	38,600 lumens		
No. of Luminaires:	96		
Total Load:	38.4 kW		
Lumen Maintenance			
Luminaire Type	L90 hrs	L80 hrs	L70 hrs
TLC-LED-400	61,000	>72,000	>72,000
Reported per TM-21-11. See luminaire datasheet for details.			

Guaranteed Performance: The ILLUMINATION described above is guaranteed per your Musco Warranty document and includes a 0.95 dirt depreciation factor.

Field Measurements: Individual field measurements may vary from computer-calculated predictions and should be taken in accordance with IESNA RP-6-15.

Electrical System Requirements: Refer to Amperage Draw Chart and/or the "Musco Control System Summary" for electrical sizing.

Installation Requirements: Results assume ± 3% nominal voltage at line side of the driver and structures located within 3 feet (1m) of design locations.



Pole location(s) Ⓢ dimensions are relative to 0,0 reference point(s) ⊗



EQUIPMENT LIST FOR AREAS SHOWN

Pole		Luminaires							
QTY	LOCATION	SIZE	GRADE ELEVATION	MOUNTING HEIGHT	LUMINAIRE TYPE	QTY / POLE	THIS GRID	OTHER GRIDS	
24	A1-A6 B1-B6 C1-C6 D1-D6		62'	62'	TLC-LED-400	4	4	0	
24	TOTALS						96	96	0

Madison Coliseum - Dane County

Madison, WI

GRID SUMMARY	
Name:	Hockey
Size:	200' x 85'
Spacing:	10.0' x 10.0'
Height:	5.0' above grade

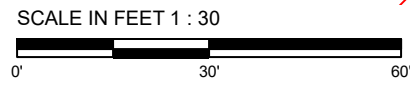
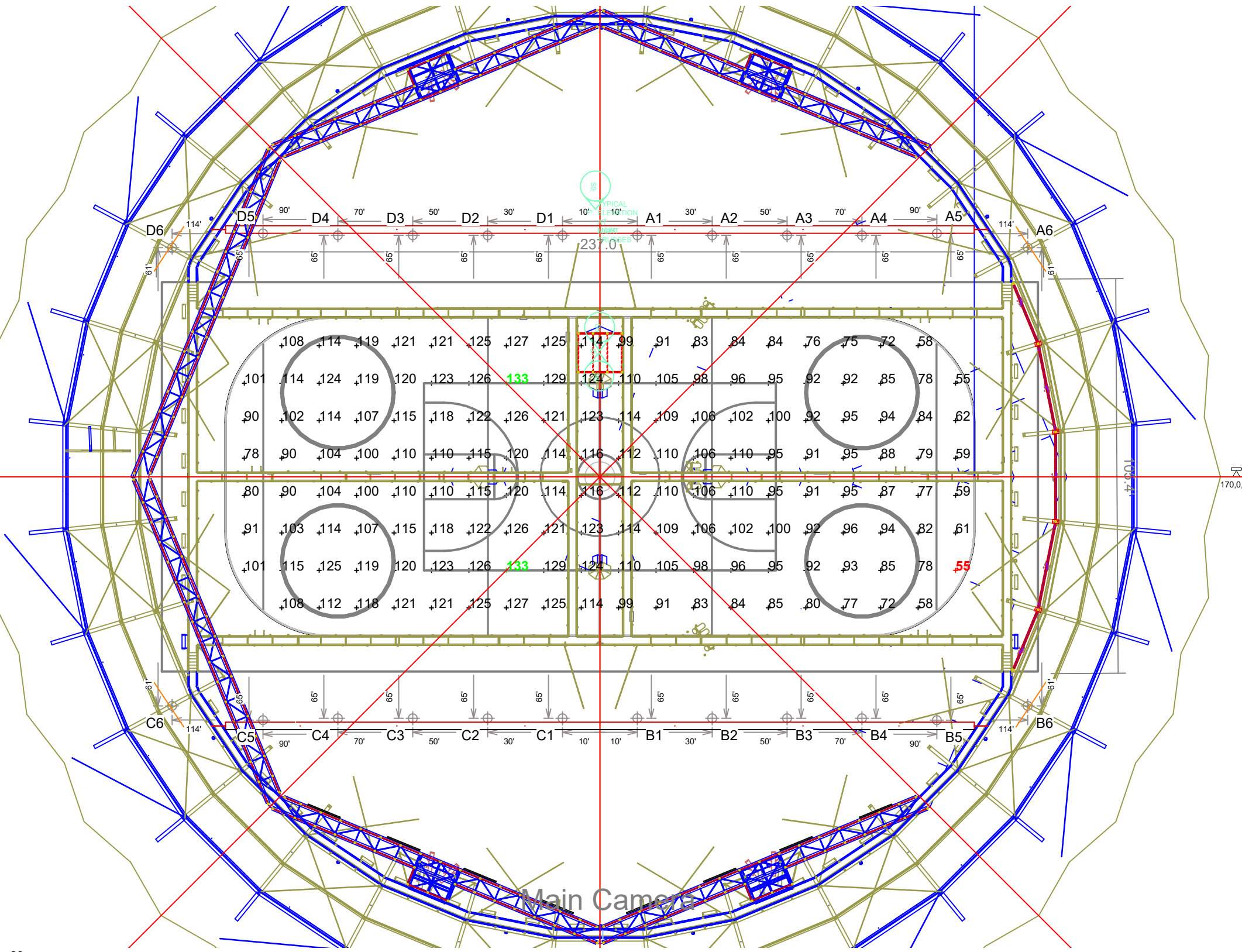
ILLUMINATION SUMMARY			
MAINTAINED TV FOOTCANDLES: Estimated End Camera			
Entire Grid			
Guaranteed Average:	75		
Scan Average:	102.76		
Maximum:	133		
Minimum:	55		
Avg / Min:	1.88		
Guaranteed Max / Min:	2.5		
Max / Min:	2.43		
UG (adjacent pts):	1.43		
CU:	0.63		
No. of Points:	156		
LUMINAIRE INFORMATION			
Color / CRI:	5700K - 75 CRI		
Luminaire Output:	38,600 lumens		
No. of Luminaires:	96		
Total Load:	38.4 kW		
Lumen Maintenance			
Luminaire Type	L90 hrs	L80 hrs	L70 hrs
TLC-LED-400	61,000	>72,000	>72,000
Reported per TM-21-11. See luminaire datasheet for details.			

Guaranteed Performance: The ILLUMINATION described above is guaranteed per your Musco Warranty document and includes a 0.95 dirt depreciation factor.

Field Measurements: Individual field measurements may vary from computer-calculated predictions and should be taken in accordance with IESNA RP-6-15.

Electrical System Requirements: Refer to Amperage Draw Chart and/or the "Musco Control System Summary" for electrical sizing.

Installation Requirements: Results assume ± 3% nominal voltage at line side of the driver and structures located within 3 feet (1m) of design locations.



Pole location(s) Ⓢ dimensions are relative to 0,0 reference point(s) ⊗



EQUIPMENT LIST FOR AREAS SHOWN									
Pole			Luminaires						
QTY	LOCATION	SIZE	GRADE ELEVATION	MOUNTING HEIGHT	LUMINAIRE TYPE	QTY / POLE	THIS GRID	OTHER GRIDS	
24	A1-A6 B1-B6 C1-C6 D1-D6		62'	62'	TLC-LED-400	4	4	0	
24	TOTALS						96	96	0

Madison Coliseum - Dane County

Madison, WI

GRID SUMMARY	
Name:	MP Area
Size:	234' x 104'
Spacing:	10.0' x 10.0'
Height:	3.0' above grade

ILLUMINATION SUMMARY			
MAINTAINED HORIZONTAL FOOTCANDLES			
Entire Grid			
Scan Average:	125.86		
Maximum:	175		
Minimum:	42		
Avg / Min:	3.01		
Max / Min:	4.18		
UG (adjacent pts):	2.50		
CU:	0.82		
No. of Points:	248		
LUMINAIRE INFORMATION			
Color / CRI:	5700K - 75 CRI		
Luminaire Output:	38,600 lumens		
No. of Luminaires:	96		
Total Load:	38.4 kW		
Lumen Maintenance			
Luminaire Type	L90 hrs	L80 hrs	L70 hrs
TLC-LED-400	61,000	>72,000	>72,000

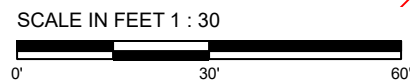
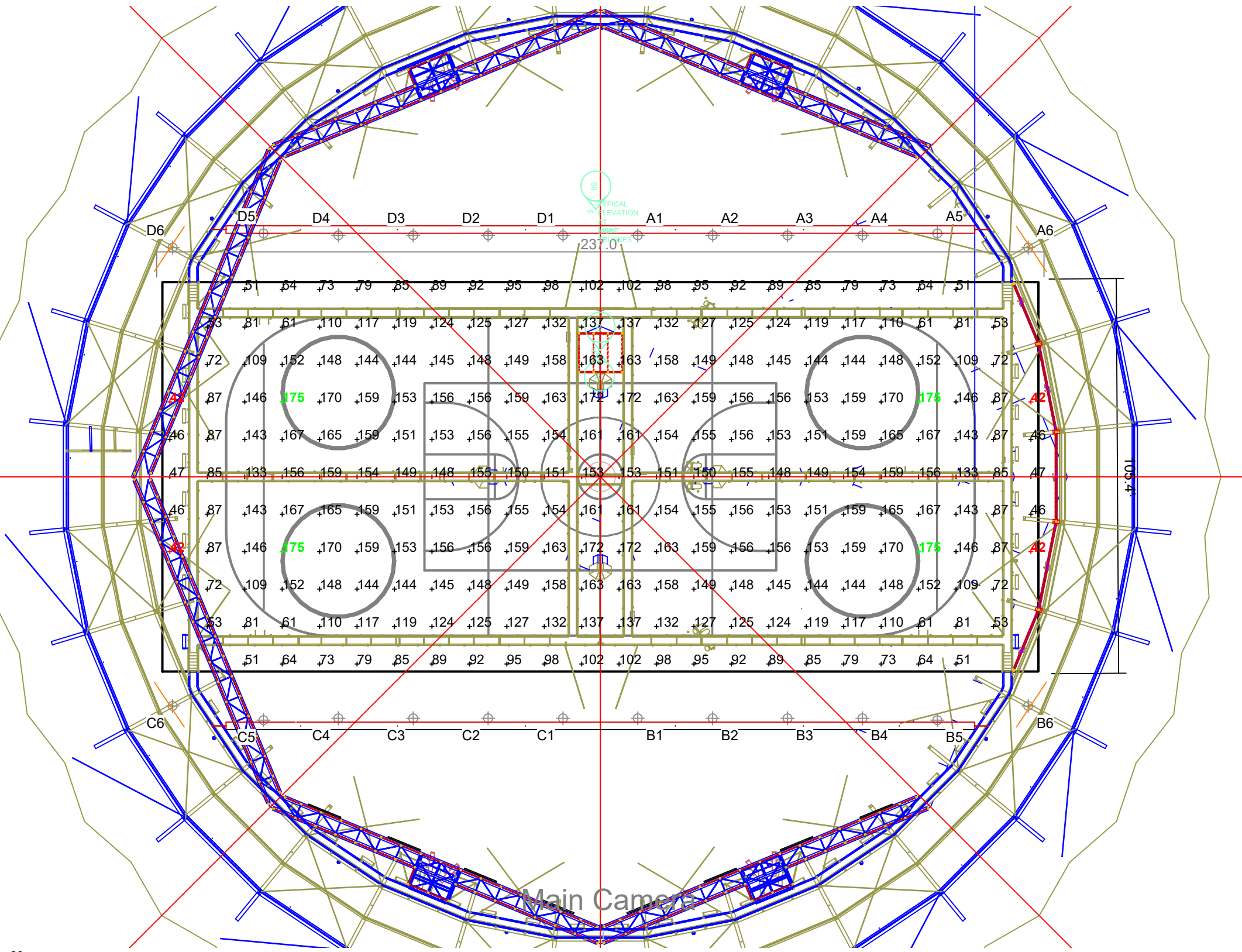
Reported per TM-21-11. See luminaire datasheet for details.

Guaranteed Performance: The ILLUMINATION described above is guaranteed per your Musco Warranty document and includes a 0.95 dirt depreciation factor.

Field Measurements: Individual field measurements may vary from computer-calculated predictions and should be taken in accordance with IESNA RP-6-15.

Electrical System Requirements: Refer to Amperage Draw Chart and/or the "Musco Control System Summary" for electrical sizing.

Installation Requirements: Results assume ± 3% nominal voltage at line side of the driver and structures located within 3 feet (1m) of design locations.



Pole location(s) ⊕ dimensions are relative to 0,0 reference point(s) ⊗



We Make It Happen.

Madison Coliseum - Dane County

Madison, WI

EQUIPMENT LAYOUT

INCLUDES:

- Basketball
- Hockey
- MP Area

Electrical System Requirements: Refer to Amperage Draw Chart and/or the "Musco Control System Summary" for electrical sizing.

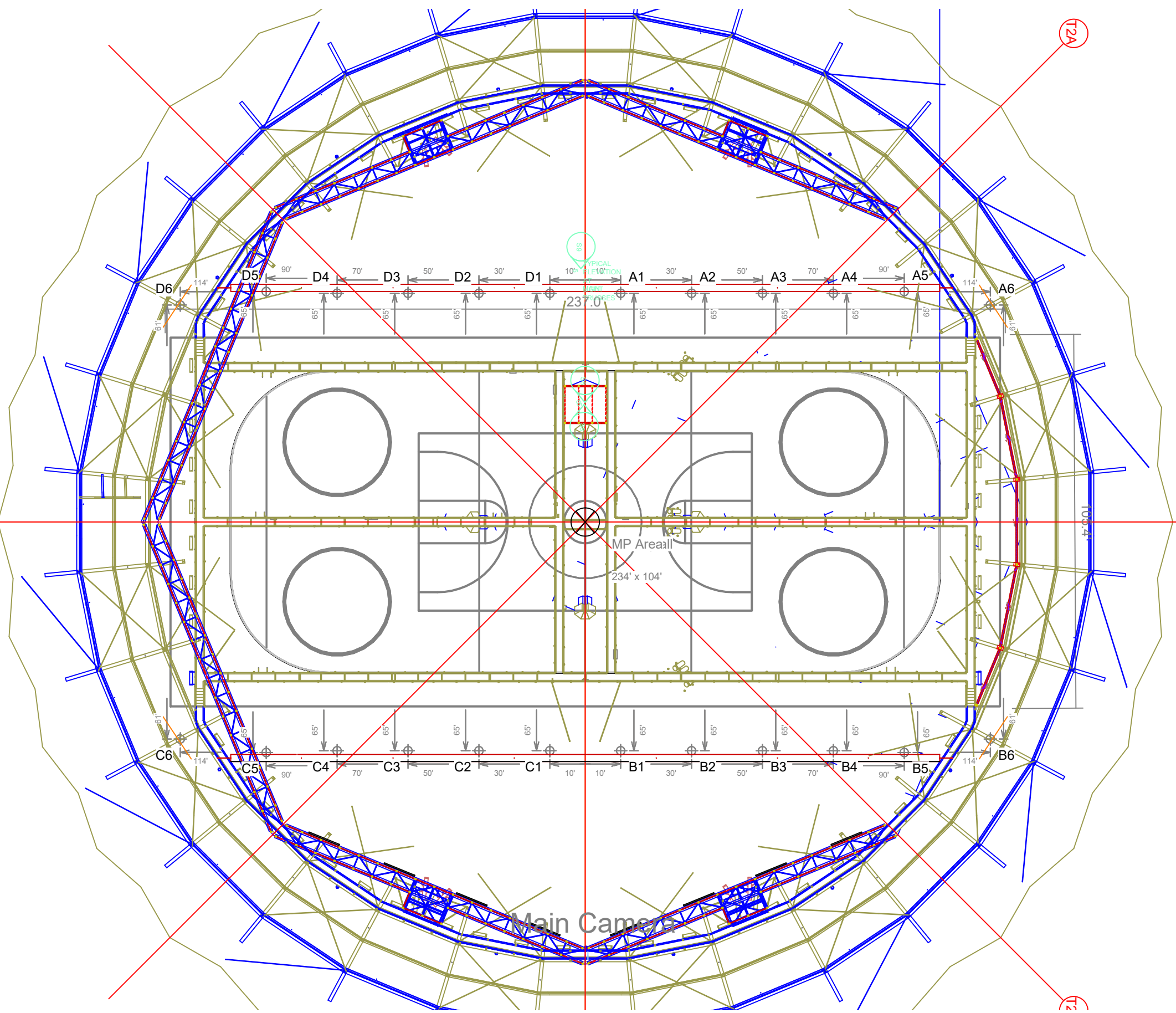
Installation Requirements: Results assume ± 3% nominal voltage at line side of the driver and structures located within 3 feet (1m) of design locations.

EQUIPMENT LIST FOR AREAS SHOWN

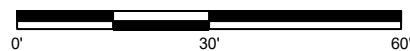
QTY	Pole			Luminaires		QTY / POLE
	LOCATION	SIZE	GRADE ELEVATION	MOUNTING HEIGHT	LUMINAIRE TYPE	
24	A1-A6 B1-B6 C1-C6 D1-D6		62'	62'	TLC-LED-400	4
24	TOTALS					96

SINGLE LUMINAIRE AMPERAGE DRAW CHART

Ballast Specifications (.90 min power factor)	Line Amperage Per Luminaire (max draw)					
	208 (60)	220 (60)	240 (60)	277 (60)	347 (60)	480 (60)
Single Phase Voltage						
TLC-LED-400	2.5	2.3	2.1	1.9	1.5	1.1



SCALE IN FEET 1 : 30



ENGINEERED DESIGN By: C.Hoy • File #185796D1 • 11-Jan-18

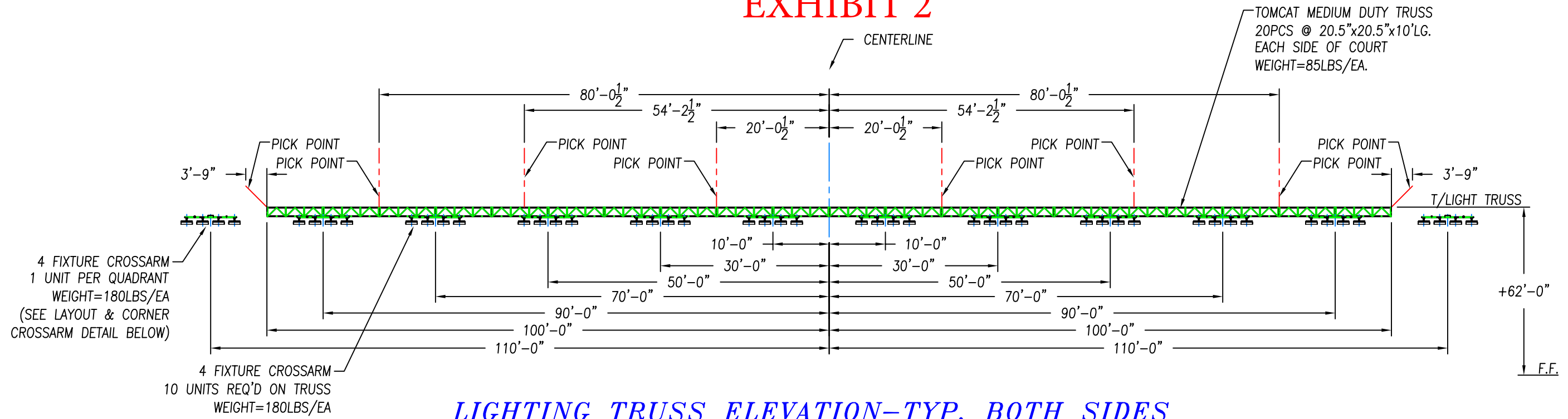
Pole location(s) ⊕ dimensions are relative to 0,0 reference point(s) ⊗



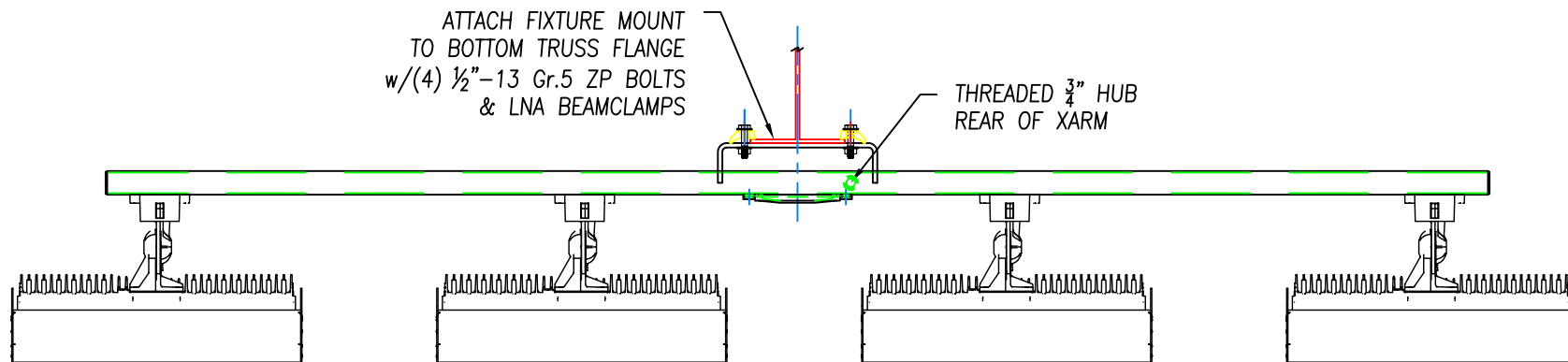
We Make It Happen.

Not to be reproduced in whole or part without the written consent of Musco Sports Lighting, LLC. ©1981, 2018 Musco Sports Lighting, LLC.

EXHIBIT 2

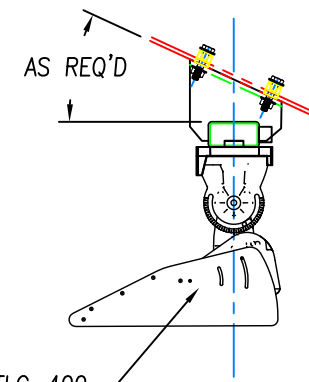


LIGHTING TRUSS ELEVATION-TYP. BOTH SIDES



FRONT VIEW

CORNER CROSSARMS DETAIL

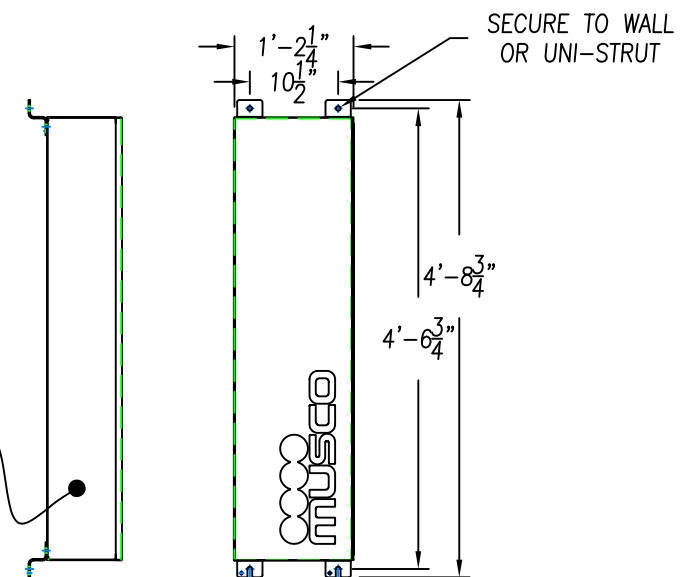


END VIEW

MUSCO LED LUMINAIRE TLC-400

INSTALLING CONTRACTOR TO SUPPLY
BELDEN 7933A COMMUNICATION CABLE
FROM GATEWAY (BY MUSCO) & IN
SERIES THROUGH ALL DRIVER ECE'S

LED DRIVER ECE (@277V)
UP TO 4 DRIVERS PER ECE
(DRIVER PER TWO FIXTURES)
[(8)FIXT.@LED400-96 = 14.96A/ECE]



MULTI DRIVER REMOTE ECE OPTION

SCALE:10X

Madison Coliseum
Madison, WI
PRELIMINARY Truss Concept

CORPORATE OFFICE:
P.O. Box 808
100 1st Avenue West
Oskaloosa, Iowa 52577
+1-800-825-6020
+1-641-873-0411



DATE:	BY:	REVISIONS:
05JAN17	DG	REVD TRUSS TO 200', ADD CORNER CROSSARMS

JOB NUMBER:	185789
DRAWN BY:	DG
CHECK BY:	
REPRESENTATIVE:	
SCALE:	1:240
DATE:	06NOV17
DRAWING NUMBER:	185796X1
1 OF 1 SHEETS	

Copyright (C) Musco Sports Lighting, L.L.C. 1991, 2012
Not to be reproduced in whole or part without
the written consent of Musco Sports Lighting, L.L.C.
U.S. and foreign patents issued and pending.