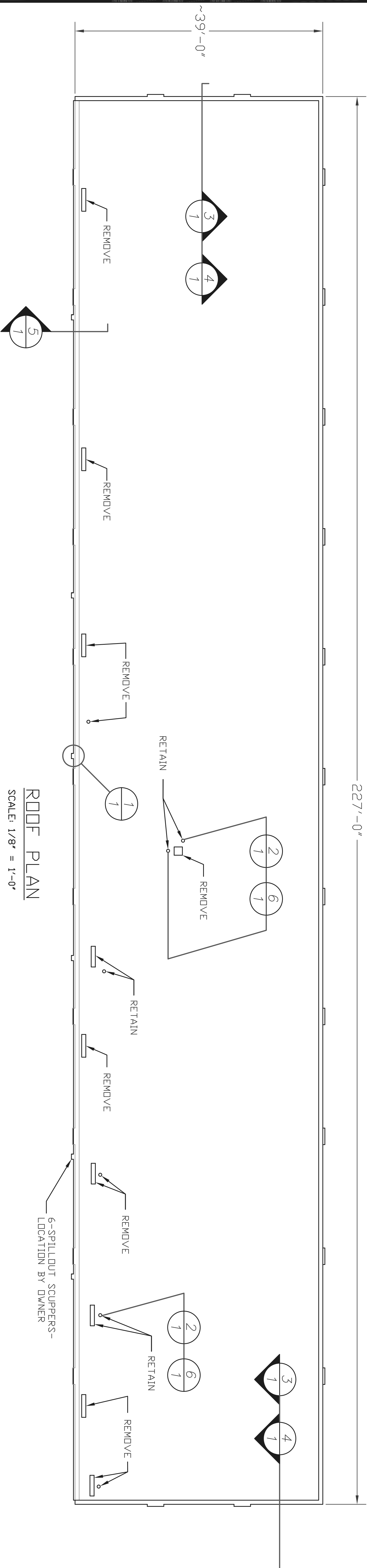
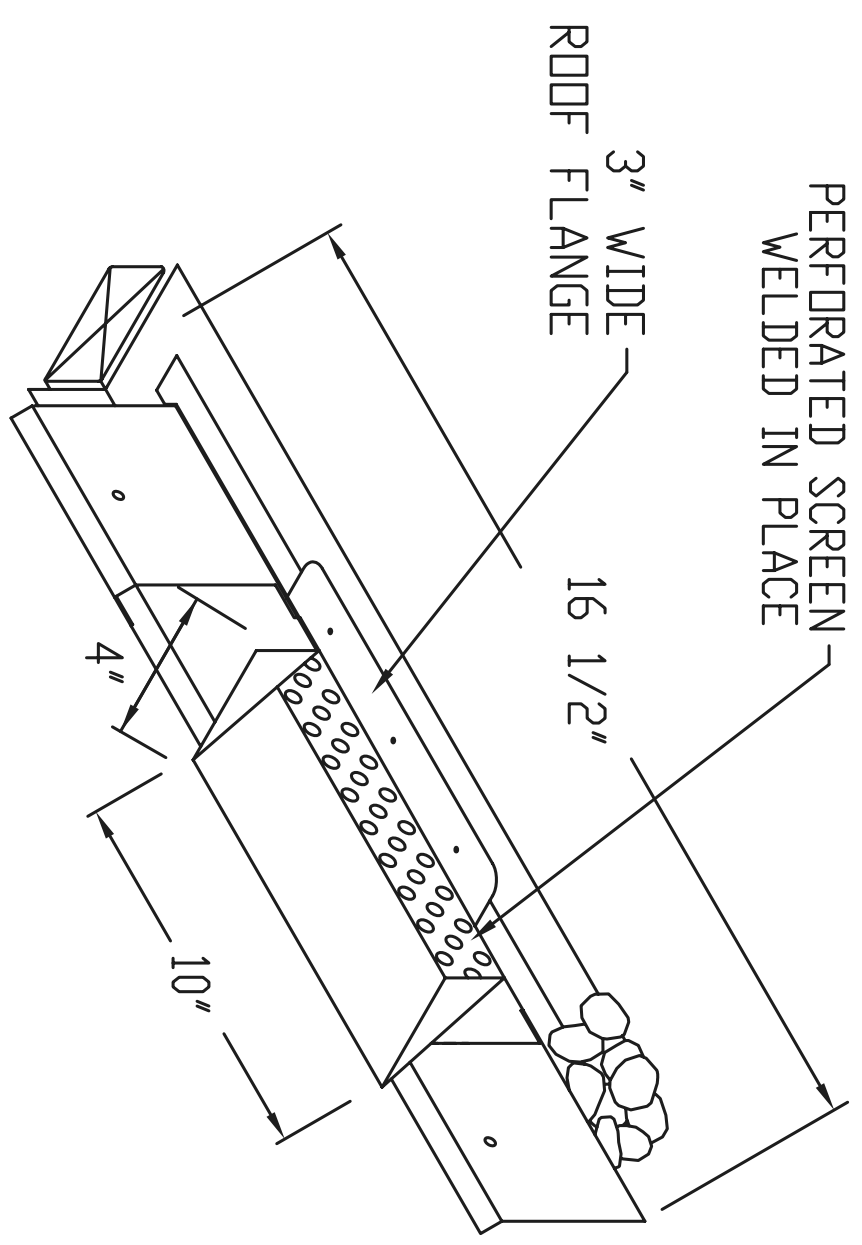


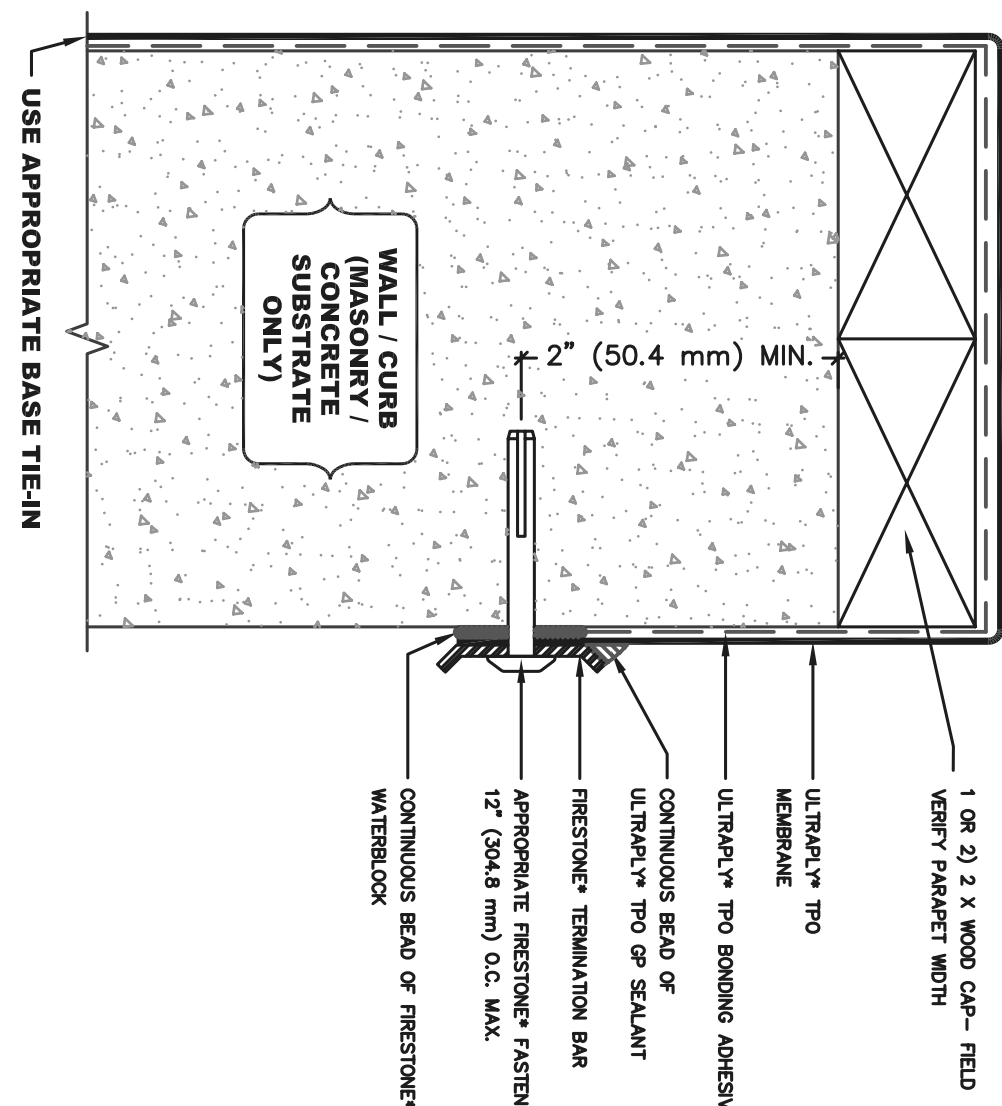
227'-0"



**ROOF PLAN**  
SCALE: 1/8" = 1'-0"

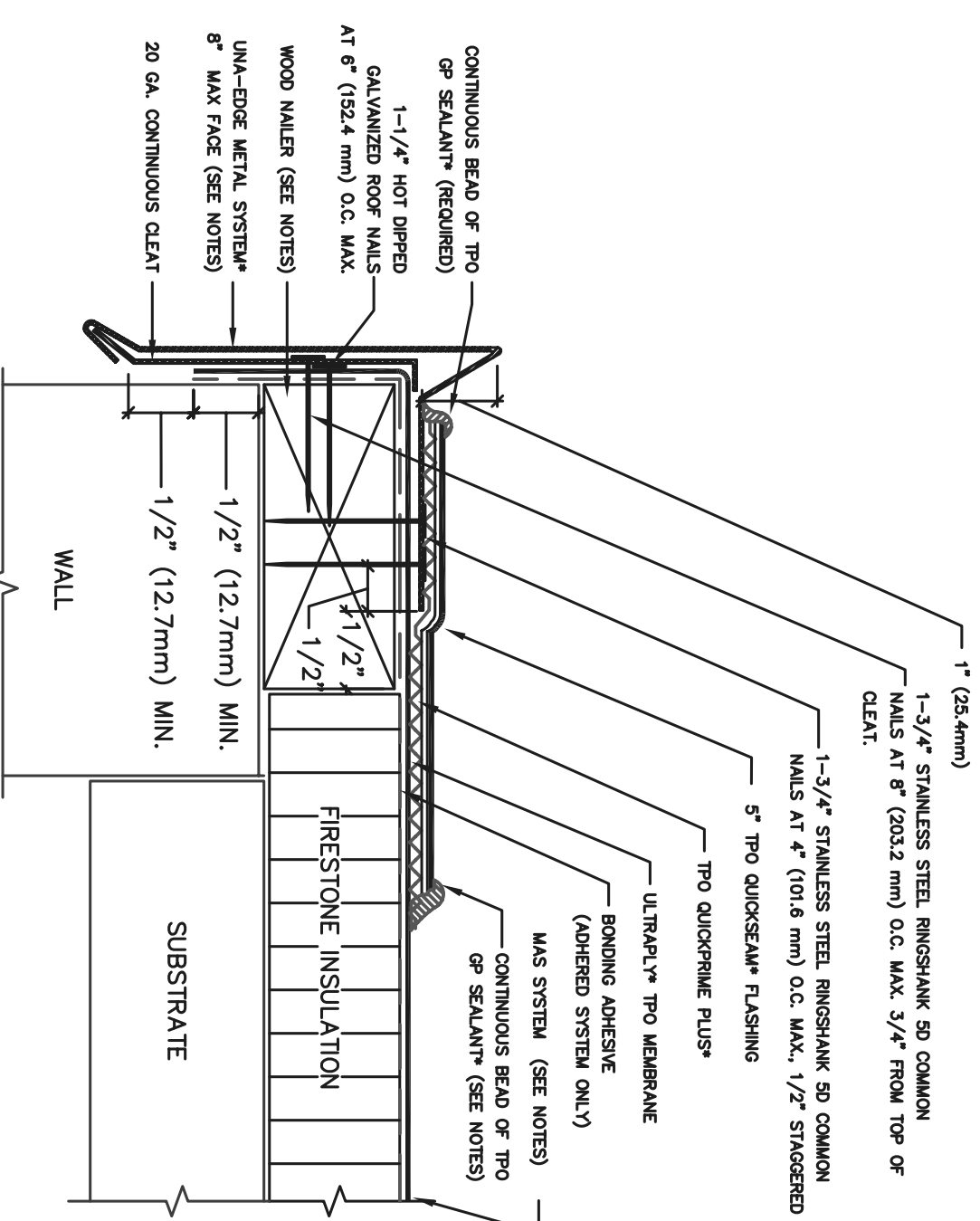


**1 SCUPPER DETAIL**  
SCALE: NONE



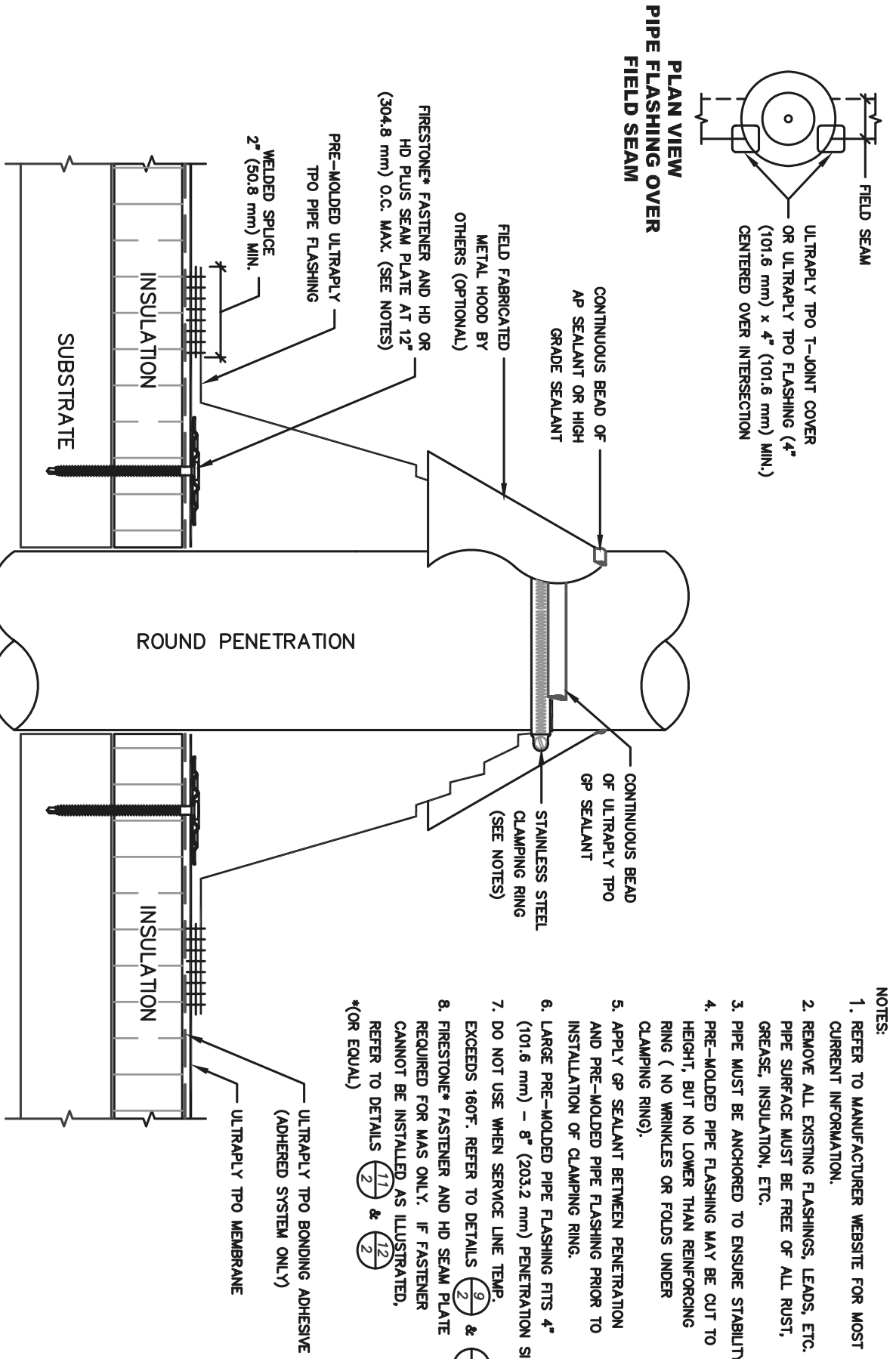
**3 TERMINATION SECTION**  
SCALE: NONE

- NOTES:
1. REFER TO FIRESTONE WEBSITE FOR MOST CURRENT INFORMATION.
  2. REFER TO DETAIL 1 FOR WELD WIDTH.
  3. TERMINATION BAR MUST BE CUT AT ROOF AND OUTSIDE CORNERS. DO NOT BEND AROUND CORNERS.
  4. TERMINATION BAR MUST BE FASTENED WITHIN 1" (25.4 mm) MAX. OF ALL SECTION ENDS. (FOR EQUAL)
- MASONRY AND CONCRETE WALLS / CURBS MUST BE WATERPROOFED AND MEMBRANE MUST BE MOUNTED FOR ANY SURFACE MOUNTED TERMINATION TO BE EFFECTIVE.**

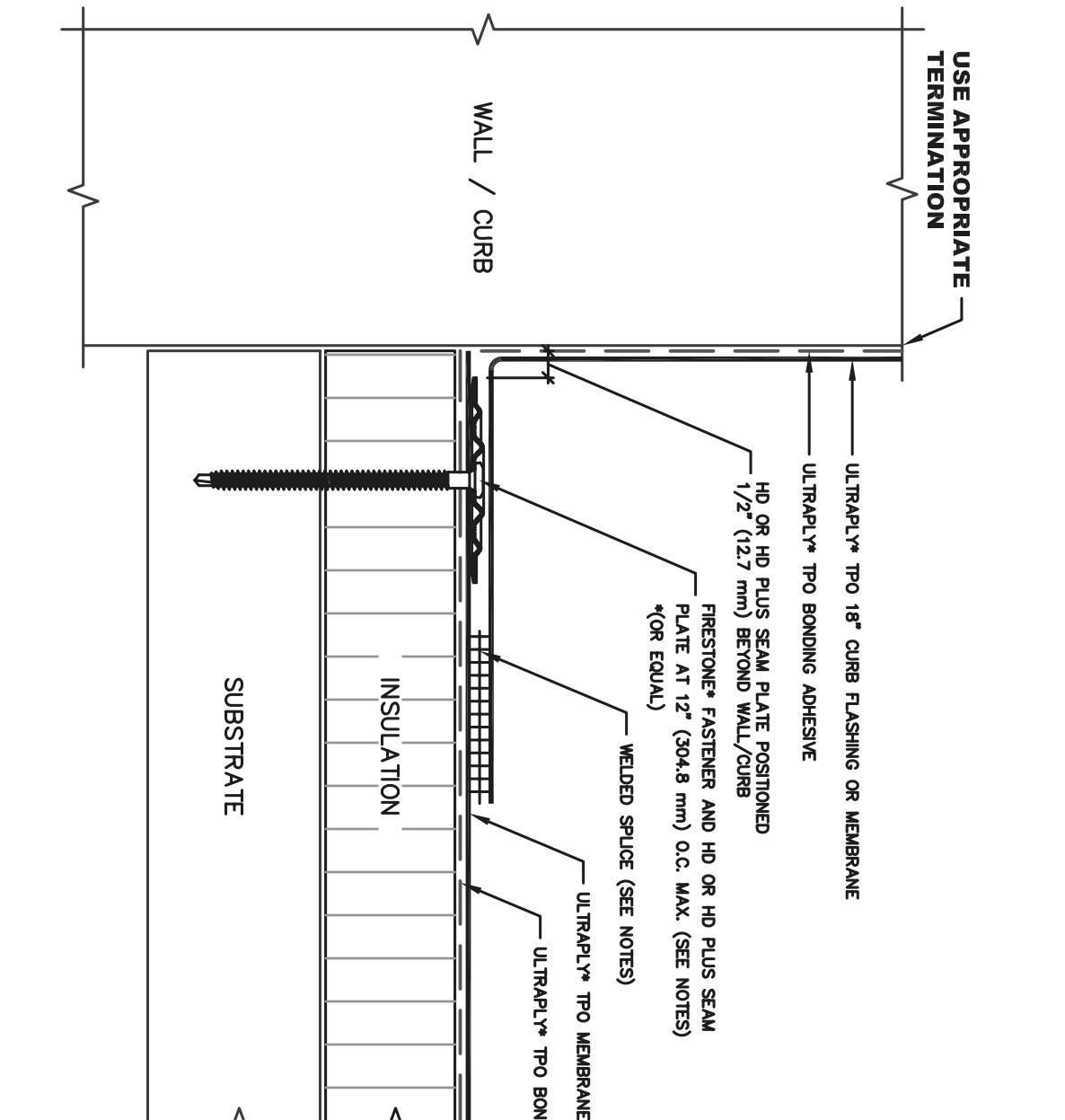


**5 GRAVEL STOP SECTION**  
SCALE: NONE

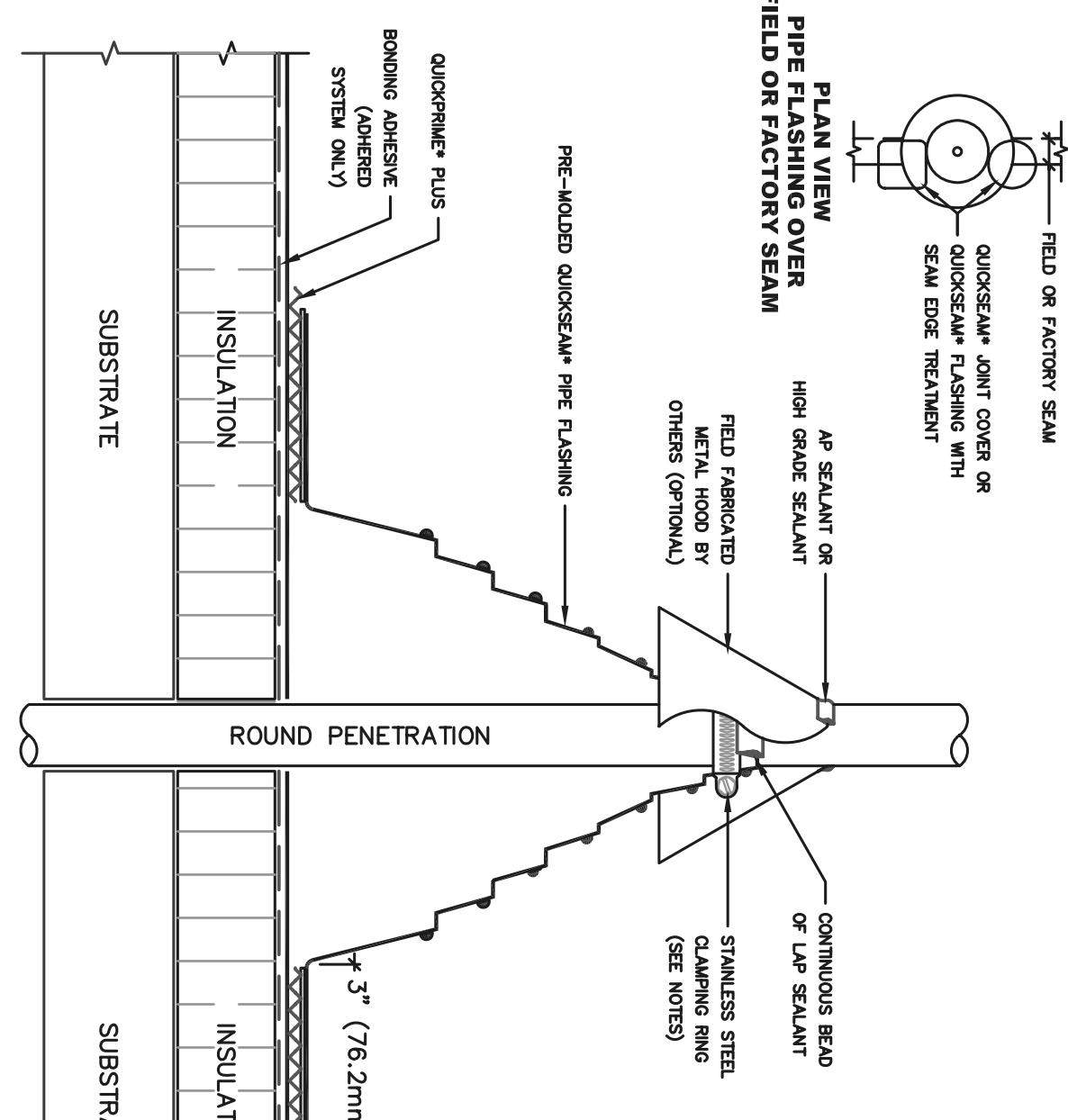
- NOTES:
1. REFER TO MANUFACTURER WEBSITE FOR MOST CURRENT INFORMATION.
  2. REFER TO DETAIL 1 FOR WELD WIDTH.
  3. REFER TO DETAIL 1 FOR WELD WIDTH.
  4. REFER TO DETAIL 1 FOR WELD WIDTH.
  5. REFER TO DETAIL 1 FOR WELD WIDTH.
  6. REFER TO DETAIL 1 FOR WELD WIDTH.
  7. REFER TO DETAIL 1 FOR WELD WIDTH.
  8. REFER TO DETAIL 1 FOR WELD WIDTH.
  9. REFER TO DETAIL 1 FOR WELD WIDTH.
  10. REFER TO DETAIL 1 FOR WELD WIDTH.
  11. REFER TO DETAIL 1 FOR WELD WIDTH.
  12. REFER TO DETAIL 1 FOR WELD WIDTH.
  13. REFER TO DETAIL 1 FOR WELD WIDTH.
  14. REFER TO DETAIL 1 FOR WELD WIDTH.
  15. REFER TO DETAIL 1 FOR WELD WIDTH.
  16. REFER TO DETAIL 1 FOR WELD WIDTH.
  17. REFER TO DETAIL 1 FOR WELD WIDTH.
  18. REFER TO DETAIL 1 FOR WELD WIDTH.
  19. REFER TO DETAIL 1 FOR WELD WIDTH.
  20. REFER TO DETAIL 1 FOR WELD WIDTH.
  21. REFER TO DETAIL 1 FOR WELD WIDTH.
  22. REFER TO DETAIL 1 FOR WELD WIDTH.
  23. REFER TO DETAIL 1 FOR WELD WIDTH.
  24. REFER TO DETAIL 1 FOR WELD WIDTH.
  25. REFER TO DETAIL 1 FOR WELD WIDTH.
  26. REFER TO DETAIL 1 FOR WELD WIDTH.
  27. REFER TO DETAIL 1 FOR WELD WIDTH.
  28. REFER TO DETAIL 1 FOR WELD WIDTH.
  29. REFER TO DETAIL 1 FOR WELD WIDTH.
  30. REFER TO DETAIL 1 FOR WELD WIDTH.
  31. REFER TO DETAIL 1 FOR WELD WIDTH.
  32. REFER TO DETAIL 1 FOR WELD WIDTH.
  33. REFER TO DETAIL 1 FOR WELD WIDTH.
  34. REFER TO DETAIL 1 FOR WELD WIDTH.
  35. REFER TO DETAIL 1 FOR WELD WIDTH.
  36. REFER TO DETAIL 1 FOR WELD WIDTH.
  37. REFER TO DETAIL 1 FOR WELD WIDTH.
  38. REFER TO DETAIL 1 FOR WELD WIDTH.
  39. REFER TO DETAIL 1 FOR WELD WIDTH.
  40. REFER TO DETAIL 1 FOR WELD WIDTH.
  41. REFER TO DETAIL 1 FOR WELD WIDTH.
  42. REFER TO DETAIL 1 FOR WELD WIDTH.
  43. REFER TO DETAIL 1 FOR WELD WIDTH.
  44. REFER TO DETAIL 1 FOR WELD WIDTH.
  45. REFER TO DETAIL 1 FOR WELD WIDTH.
  46. REFER TO DETAIL 1 FOR WELD WIDTH.
  47. REFER TO DETAIL 1 FOR WELD WIDTH.
  48. REFER TO DETAIL 1 FOR WELD WIDTH.
  49. REFER TO DETAIL 1 FOR WELD WIDTH.
  50. REFER TO DETAIL 1 FOR WELD WIDTH.
  51. REFER TO DETAIL 1 FOR WELD WIDTH.
  52. REFER TO DETAIL 1 FOR WELD WIDTH.
  53. REFER TO DETAIL 1 FOR WELD WIDTH.
  54. REFER TO DETAIL 1 FOR WELD WIDTH.
  55. REFER TO DETAIL 1 FOR WELD WIDTH.
  56. REFER TO DETAIL 1 FOR WELD WIDTH.
  57. REFER TO DETAIL 1 FOR WELD WIDTH.
  58. REFER TO DETAIL 1 FOR WELD WIDTH.
  59. REFER TO DETAIL 1 FOR WELD WIDTH.
  60. REFER TO DETAIL 1 FOR WELD WIDTH.
  61. REFER TO DETAIL 1 FOR WELD WIDTH.
  62. REFER TO DETAIL 1 FOR WELD WIDTH.
  63. REFER TO DETAIL 1 FOR WELD WIDTH.
  64. REFER TO DETAIL 1 FOR WELD WIDTH.
  65. REFER TO DETAIL 1 FOR WELD WIDTH.
  66. REFER TO DETAIL 1 FOR WELD WIDTH.
  67. REFER TO DETAIL 1 FOR WELD WIDTH.
  68. REFER TO DETAIL 1 FOR WELD WIDTH.
  69. REFER TO DETAIL 1 FOR WELD WIDTH.
  70. REFER TO DETAIL 1 FOR WELD WIDTH.
  71. REFER TO DETAIL 1 FOR WELD WIDTH.
  72. REFER TO DETAIL 1 FOR WELD WIDTH.
  73. REFER TO DETAIL 1 FOR WELD WIDTH.
  74. REFER TO DETAIL 1 FOR WELD WIDTH.
  75. REFER TO DETAIL 1 FOR WELD WIDTH.
  76. REFER TO DETAIL 1 FOR WELD WIDTH.
  77. REFER TO DETAIL 1 FOR WELD WIDTH.
  78. REFER TO DETAIL 1 FOR WELD WIDTH.
  79. REFER TO DETAIL 1 FOR WELD WIDTH.
  80. REFER TO DETAIL 1 FOR WELD WIDTH.
  81. REFER TO DETAIL 1 FOR WELD WIDTH.
  82. REFER TO DETAIL 1 FOR WELD WIDTH.
  83. REFER TO DETAIL 1 FOR WELD WIDTH.
  84. REFER TO DETAIL 1 FOR WELD WIDTH.
  85. REFER TO DETAIL 1 FOR WELD WIDTH.
  86. REFER TO DETAIL 1 FOR WELD WIDTH.
  87. REFER TO DETAIL 1 FOR WELD WIDTH.
  88. REFER TO DETAIL 1 FOR WELD WIDTH.
  89. REFER TO DETAIL 1 FOR WELD WIDTH.
  90. REFER TO DETAIL 1 FOR WELD WIDTH.
  91. REFER TO DETAIL 1 FOR WELD WIDTH.
  92. REFER TO DETAIL 1 FOR WELD WIDTH.
  93. REFER TO DETAIL 1 FOR WELD WIDTH.
  94. REFER TO DETAIL 1 FOR WELD WIDTH.
  95. REFER TO DETAIL 1 FOR WELD WIDTH.
  96. REFER TO DETAIL 1 FOR WELD WIDTH.
  97. REFER TO DETAIL 1 FOR WELD WIDTH.
  98. REFER TO DETAIL 1 FOR WELD WIDTH.
  99. REFER TO DETAIL 1 FOR WELD WIDTH.
  100. REFER TO DETAIL 1 FOR WELD WIDTH.



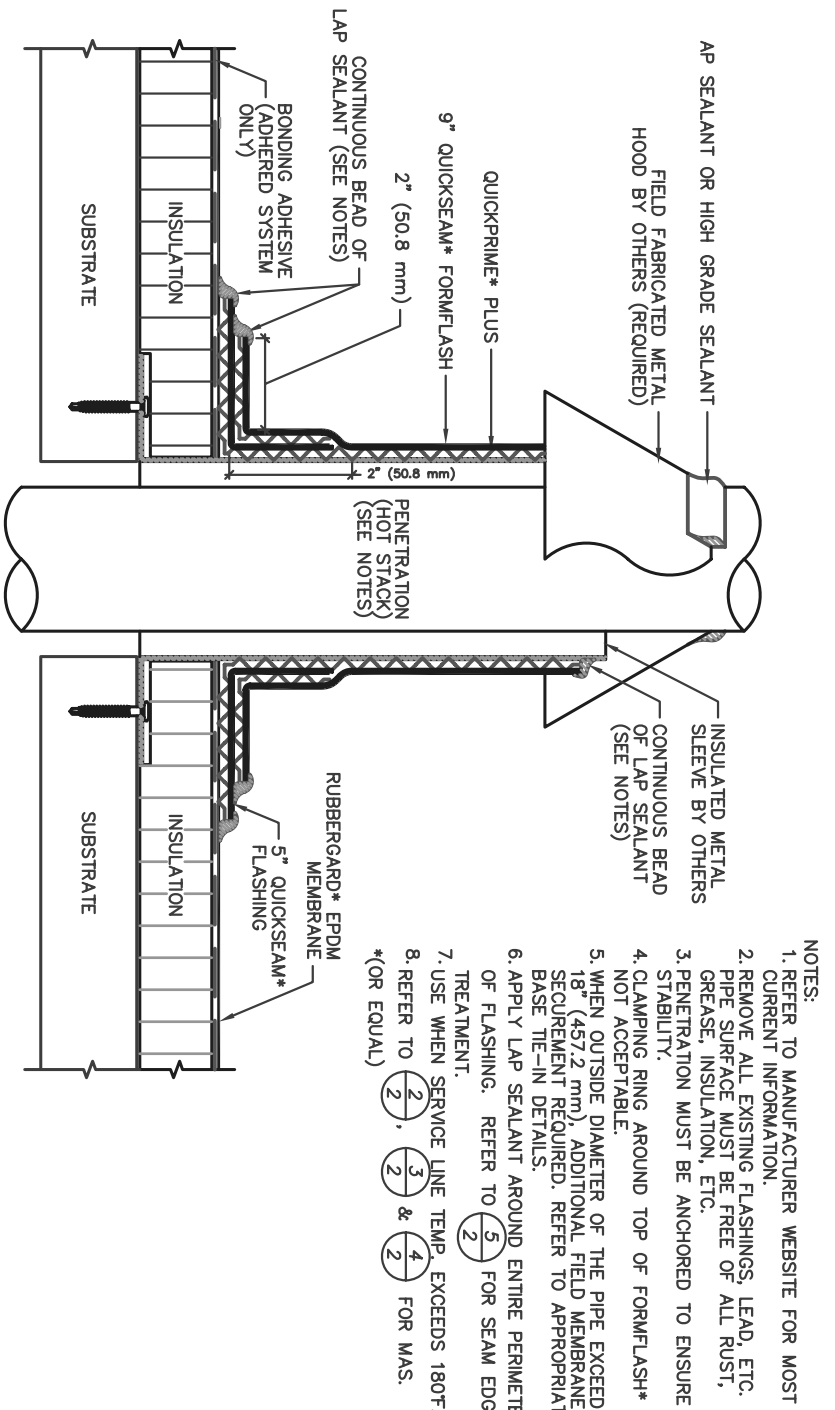
**2 PENETRATION DETAIL**  
SCALE: NONE



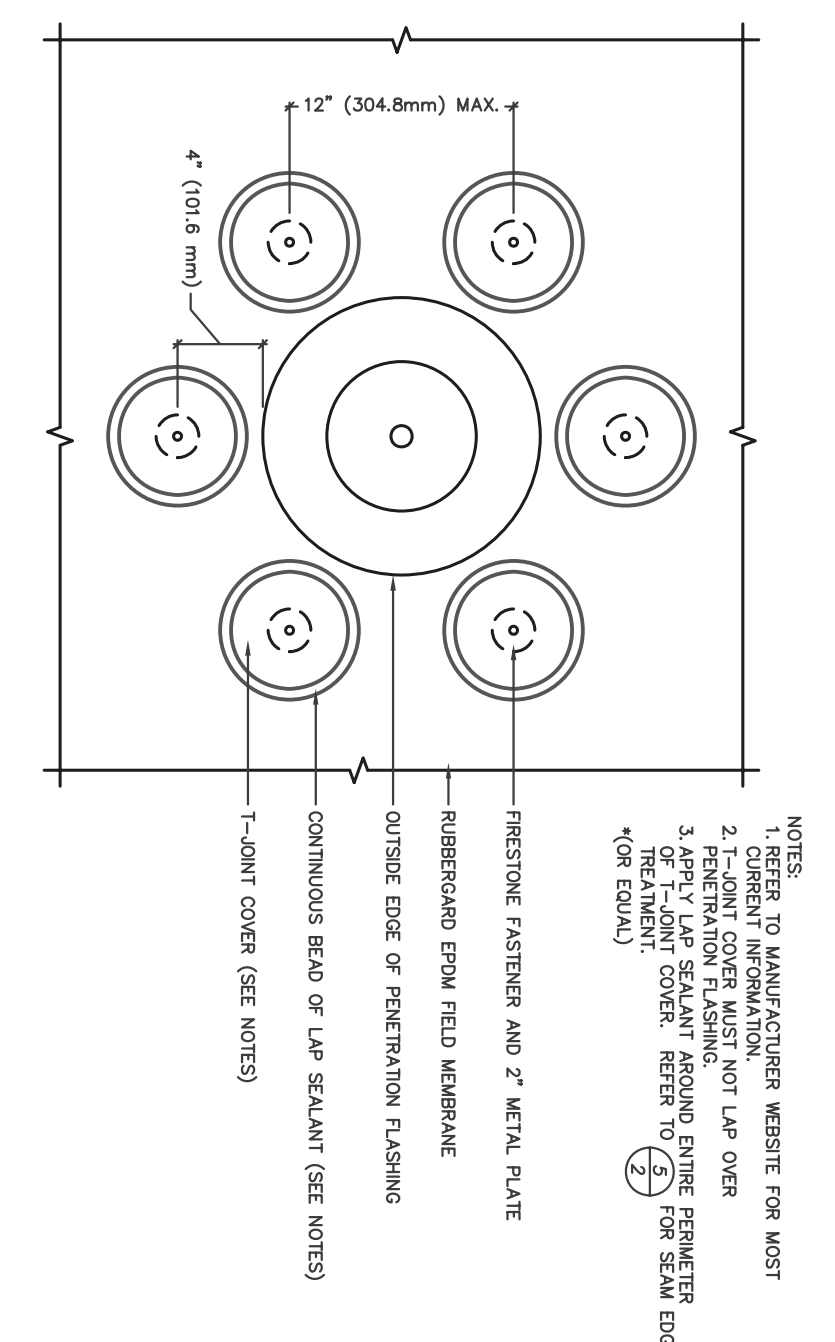
**4 BASE TIE-IN SECTION**  
SCALE: NONE



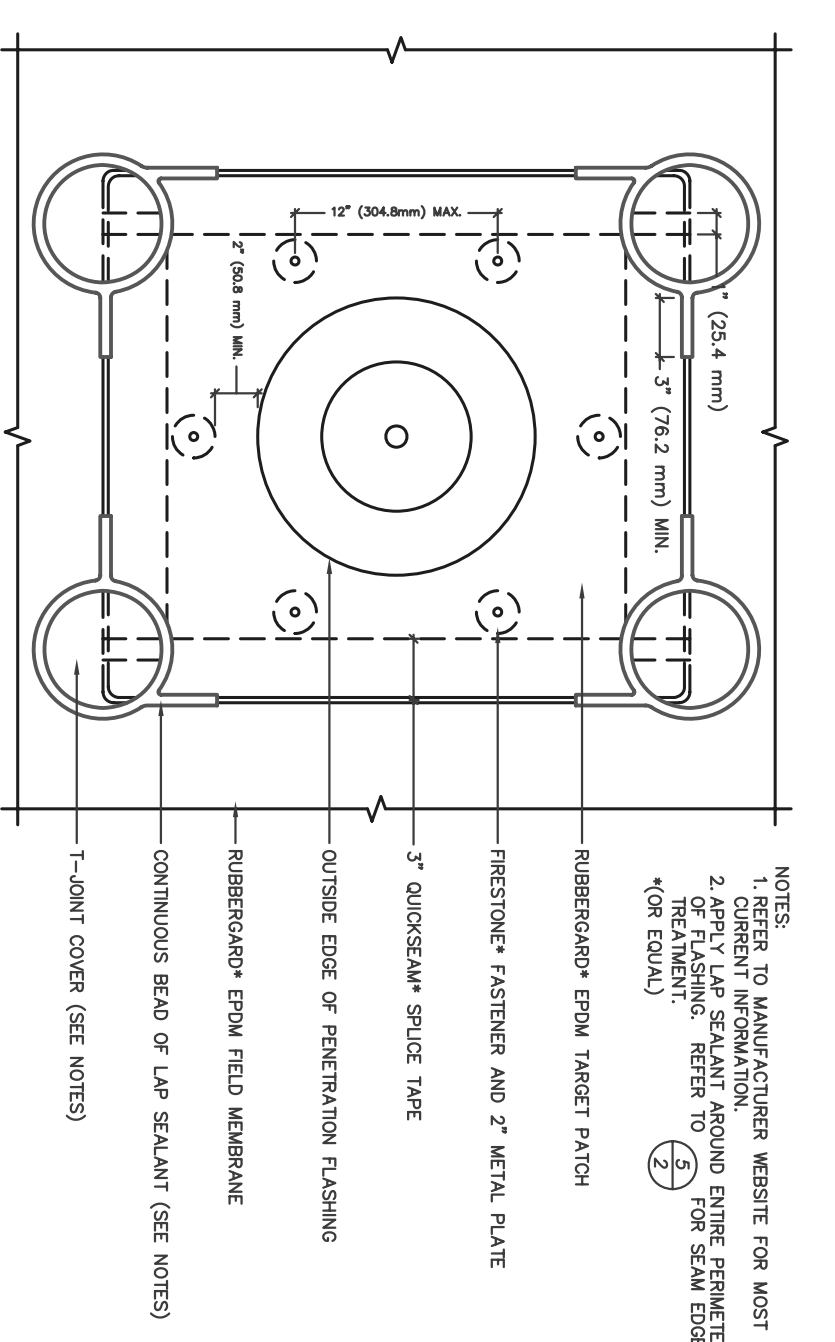
**6 PENETRATION DETAIL**  
SCALE: NONE



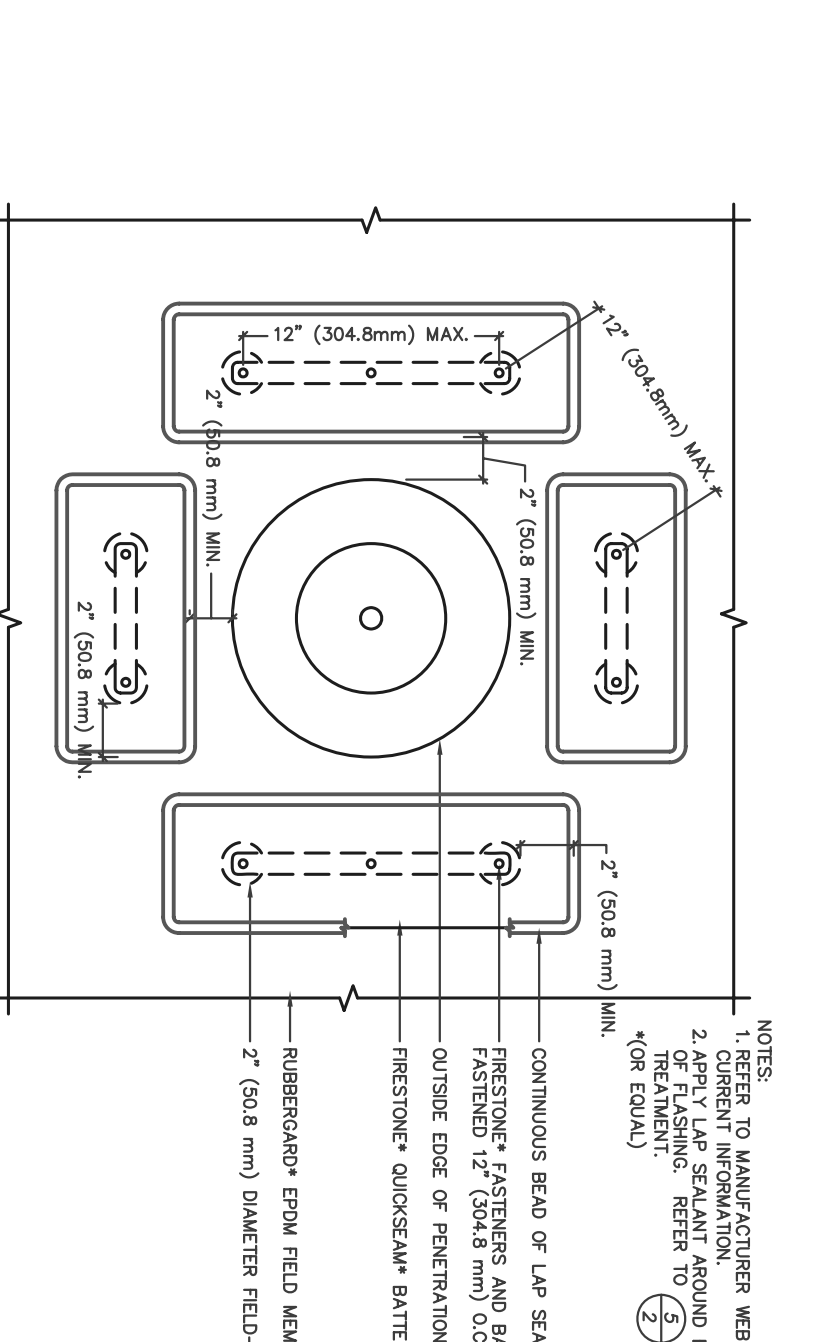
1 PENETRATION DETAIL  
SCALE: NONE



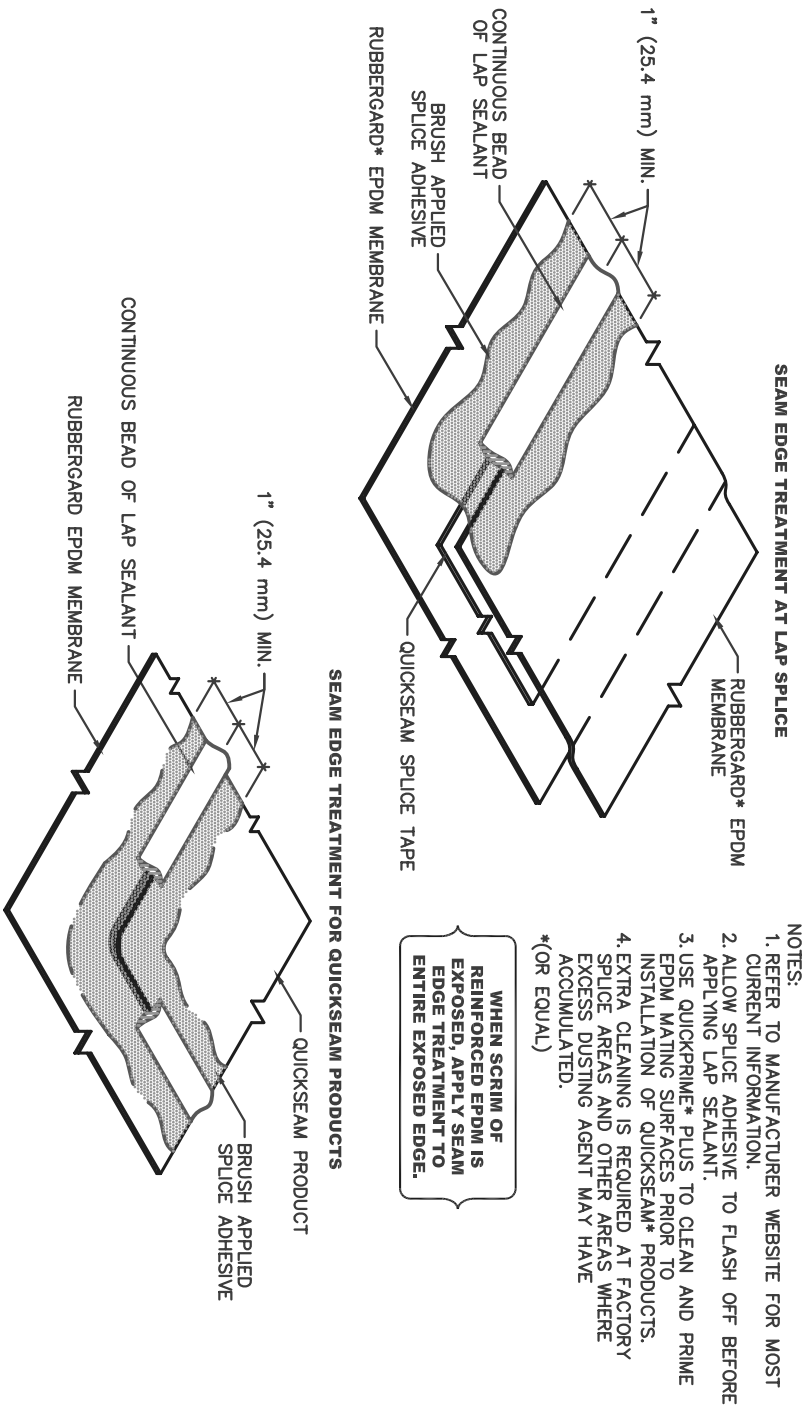
2 FLASHING DETAIL  
SCALE: NONE



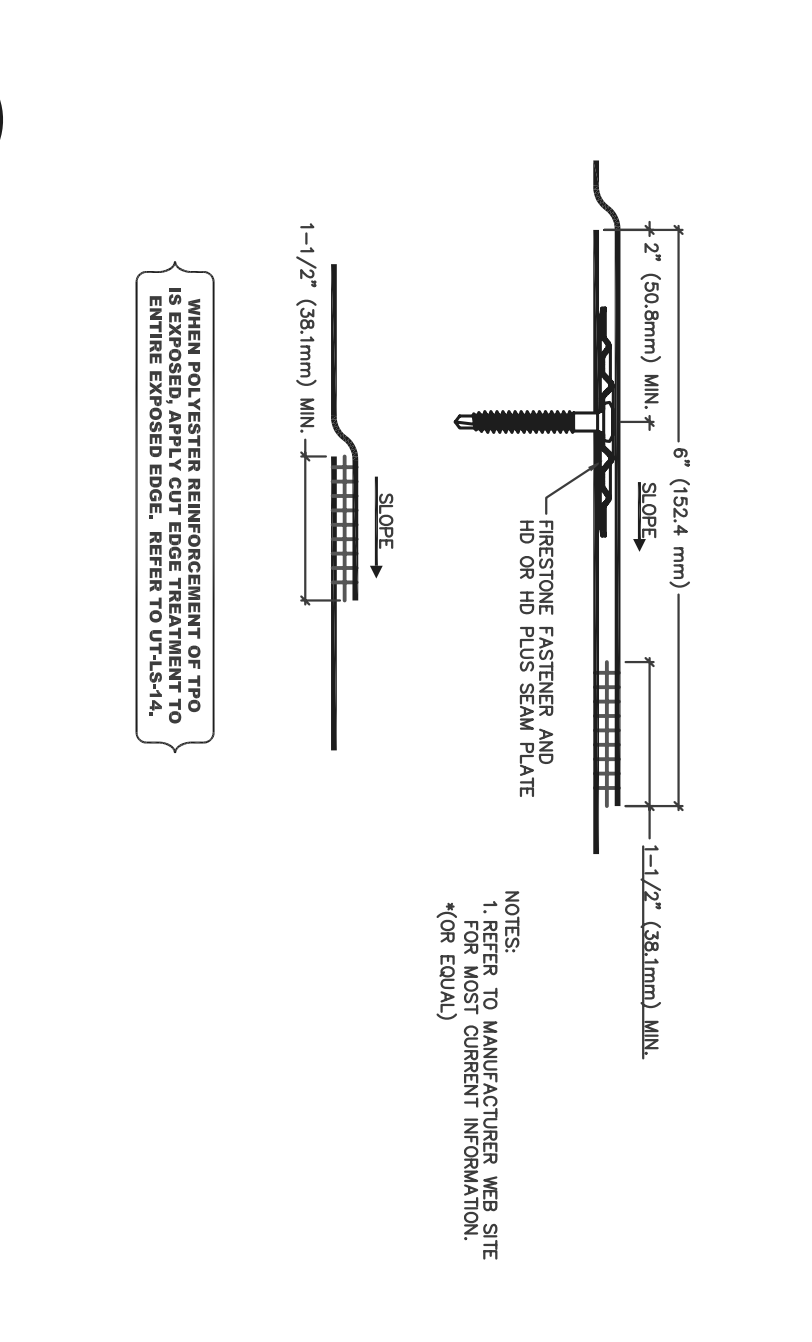
3 FLASHING DETAIL  
SCALE: NONE



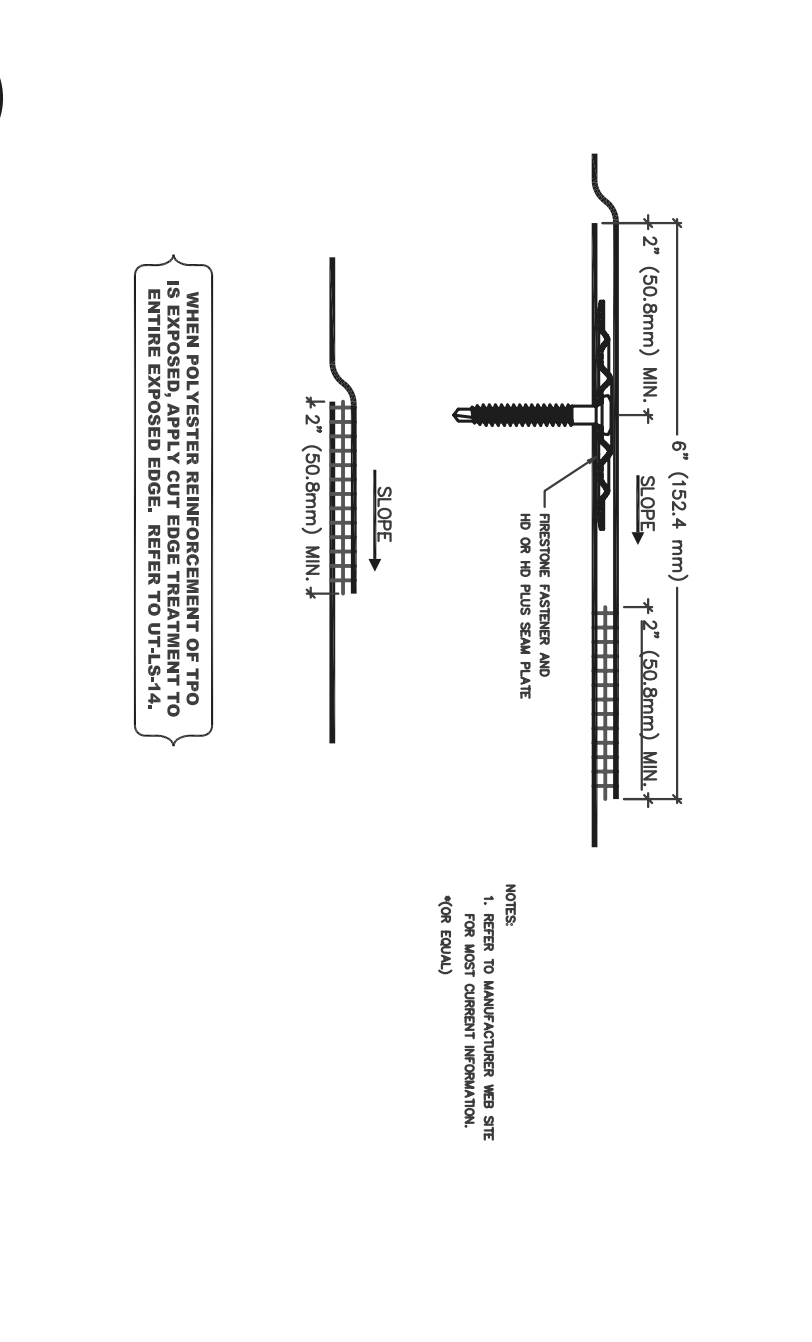
4 FLASHING DETAIL  
SCALE: NONE



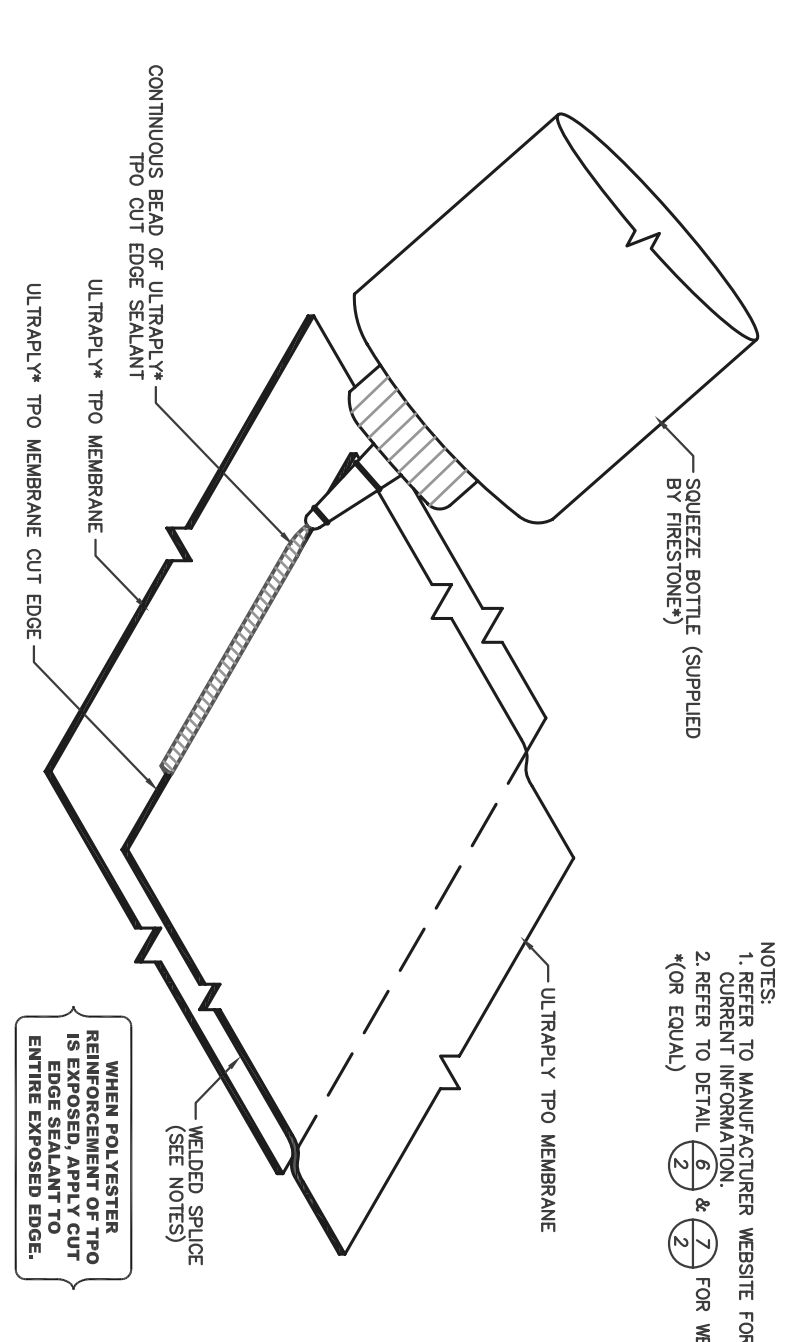
5 SPLICE DETAIL  
SCALE: NONE



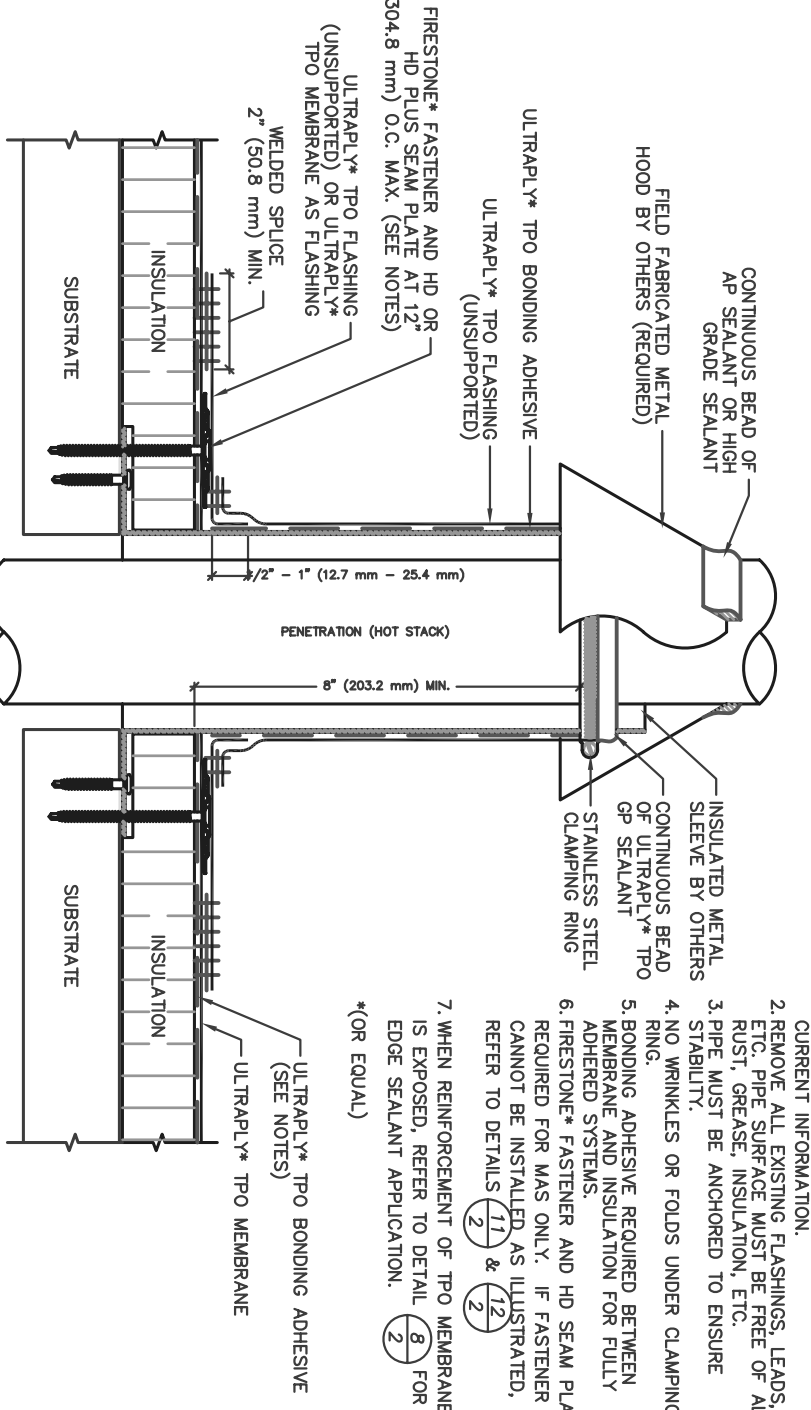
6 SPLICE DETAIL  
SCALE: NONE



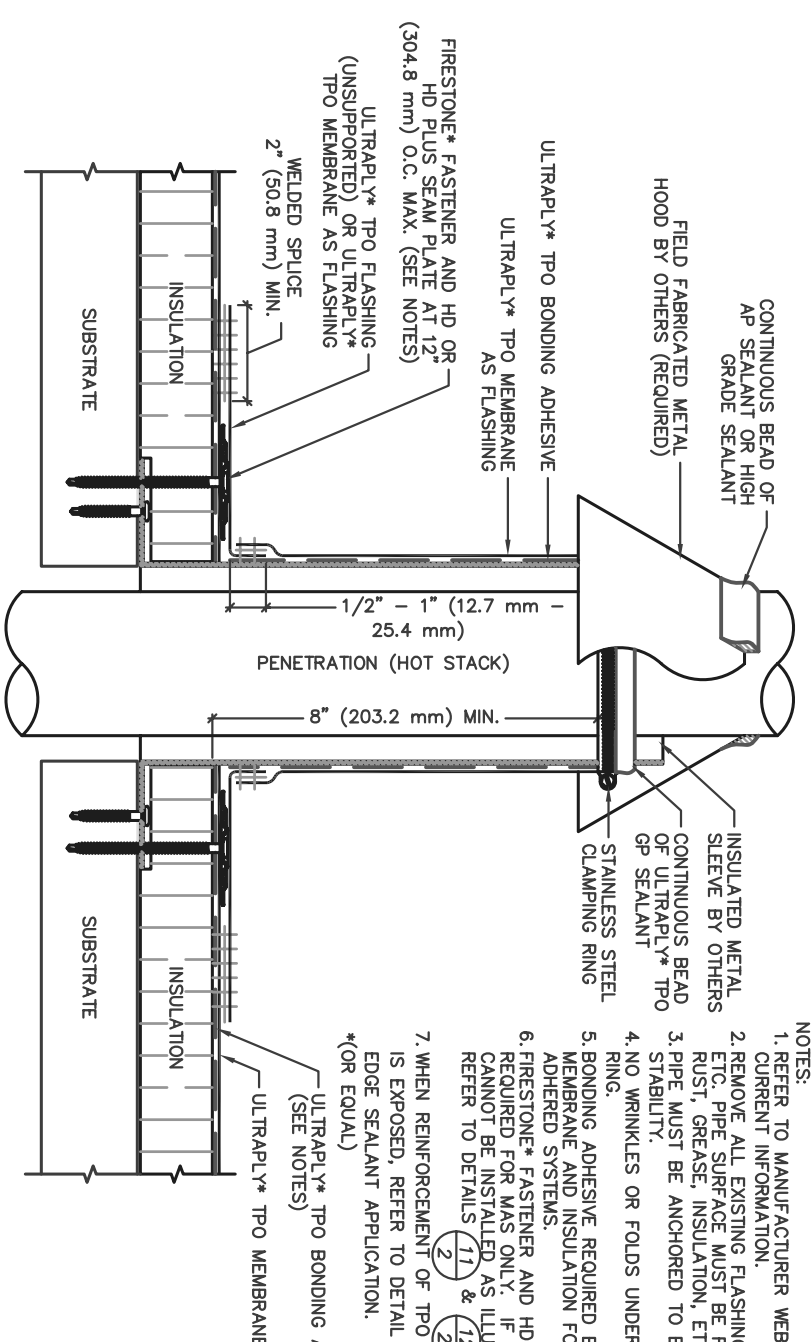
7 SPLICE DETAIL  
SCALE: NONE



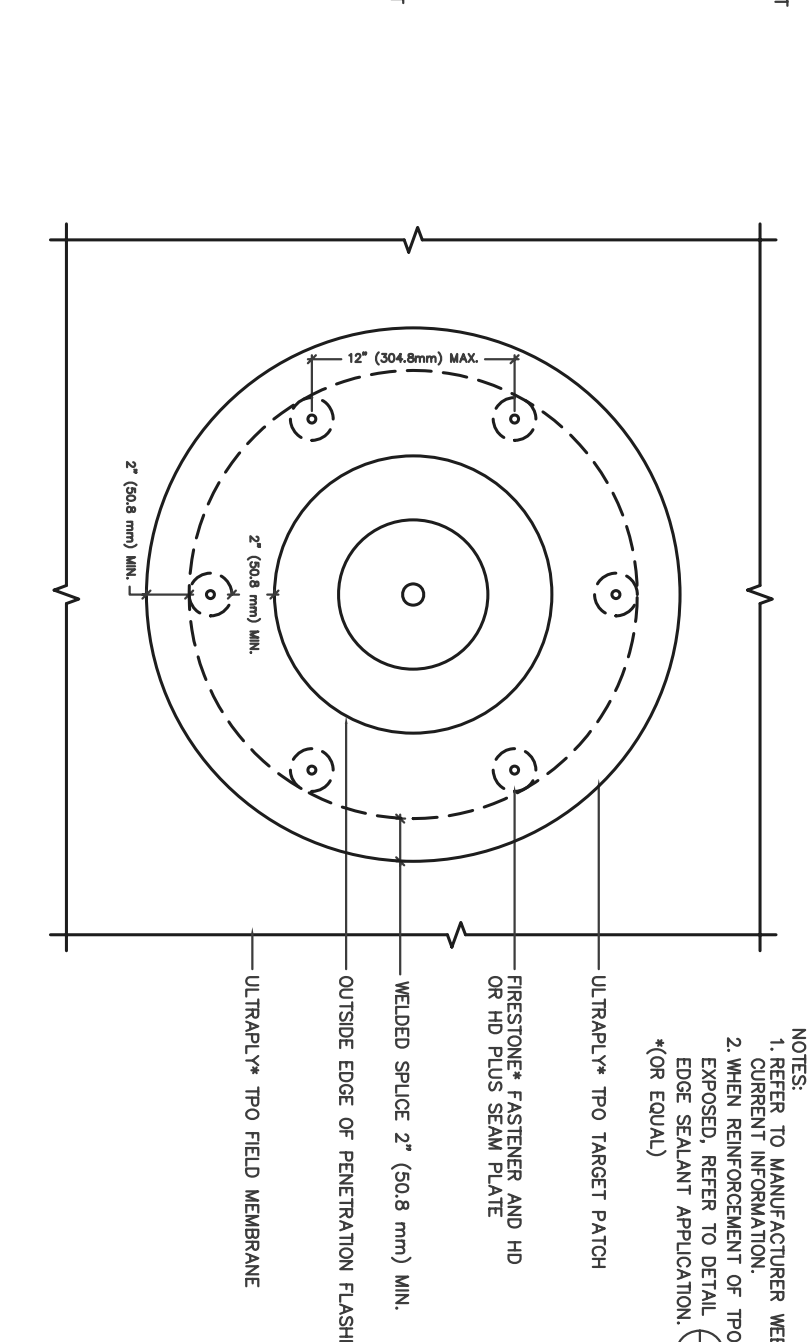
8 SPLICE DETAIL  
SCALE: NONE



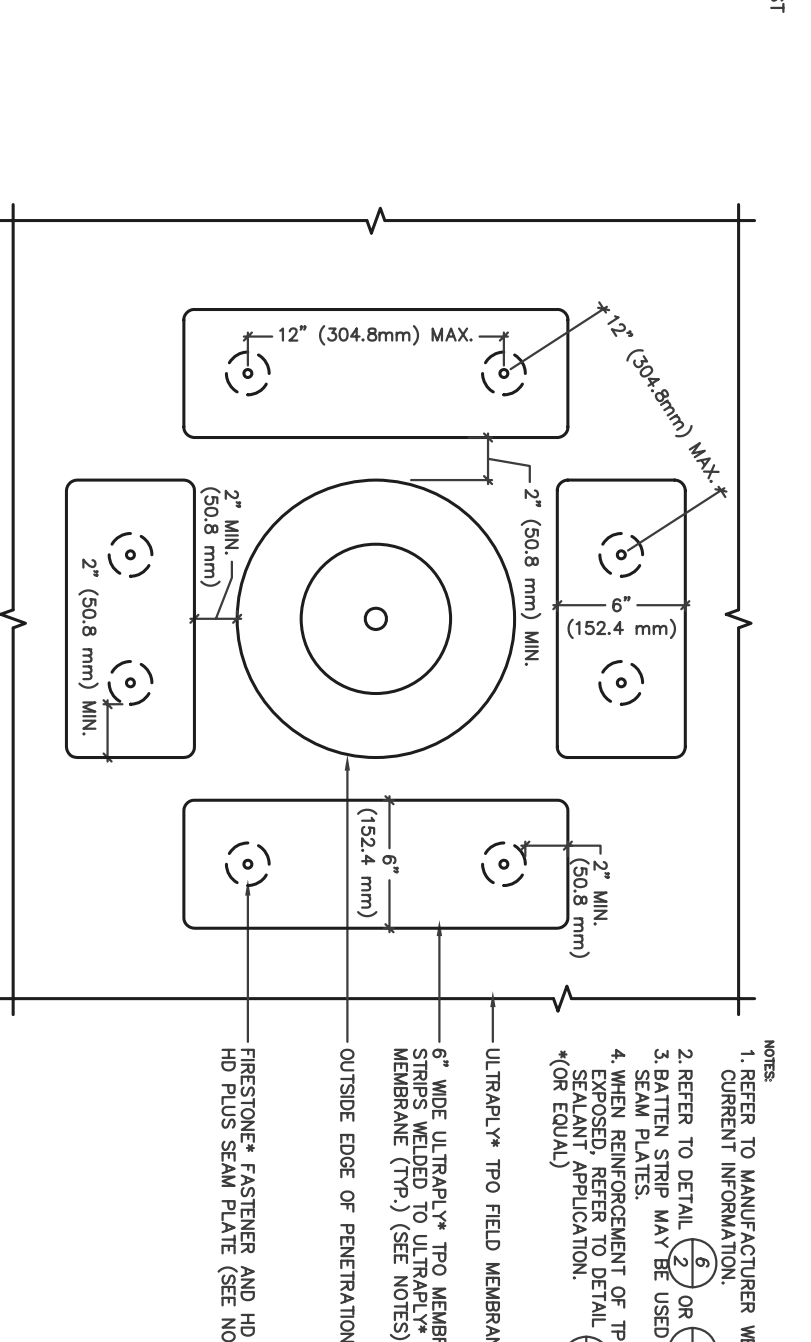
9 PENETRATION DETAIL  
SCALE: NONE



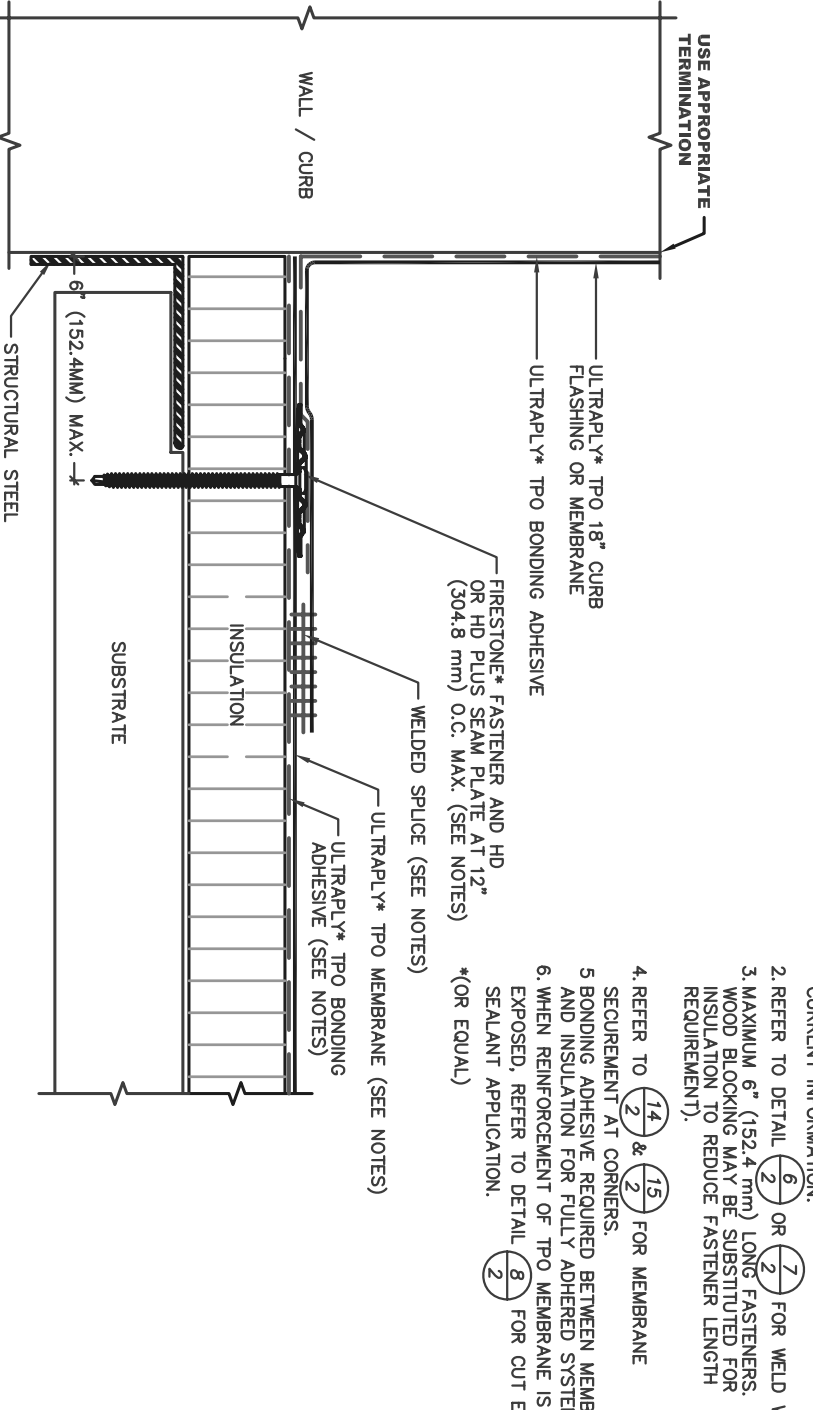
10 PENETRATION DETAIL  
SCALE: NONE



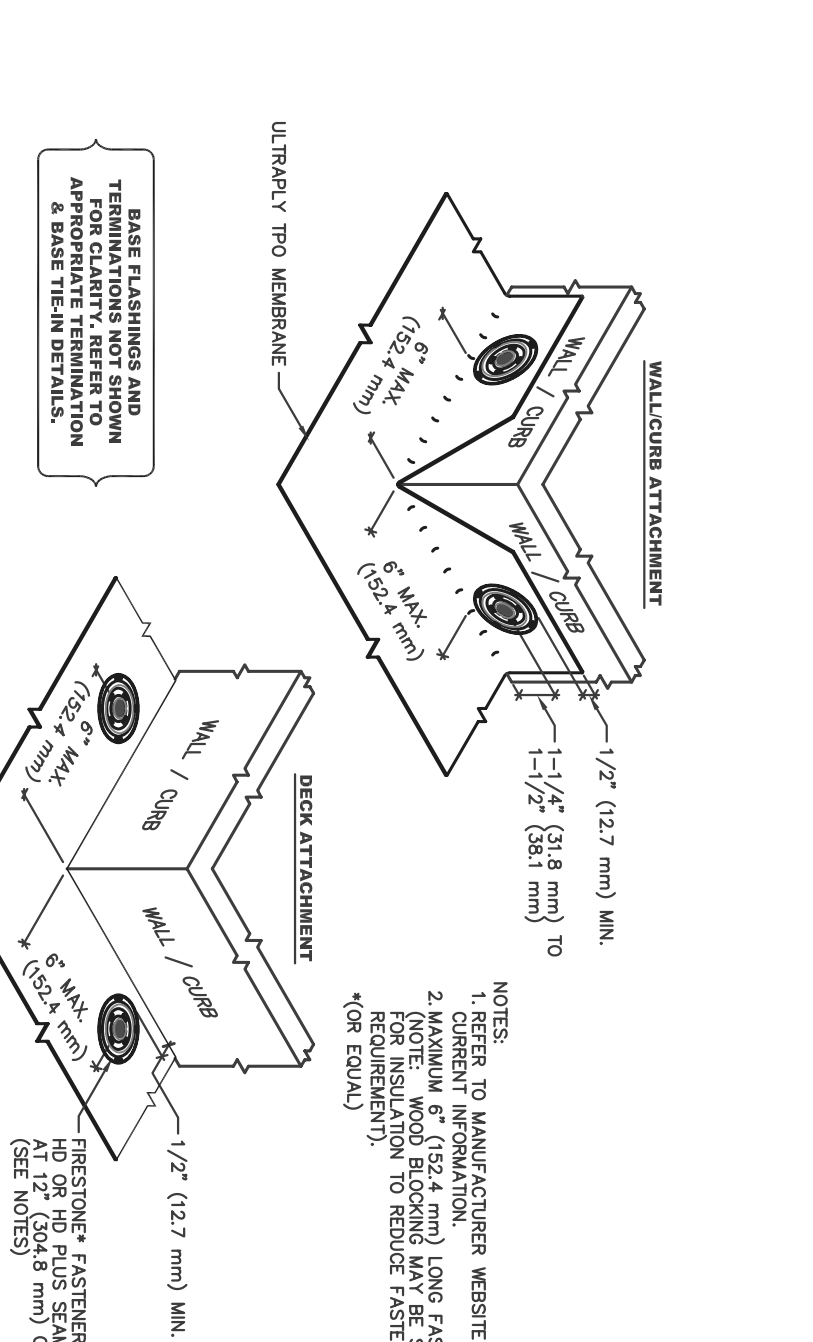
11 FLASHING DETAIL  
SCALE: NONE



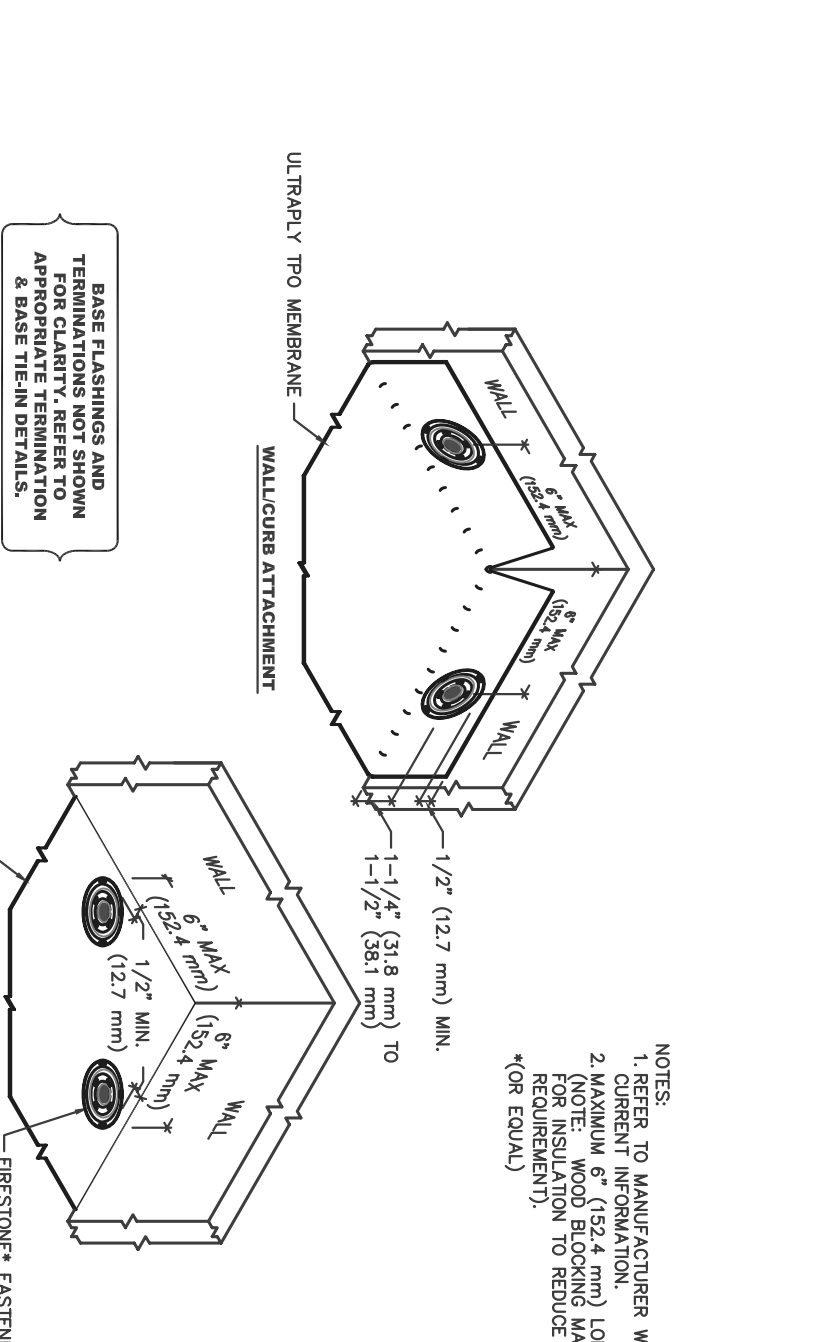
12 FLASHING DETAIL  
SCALE: NONE



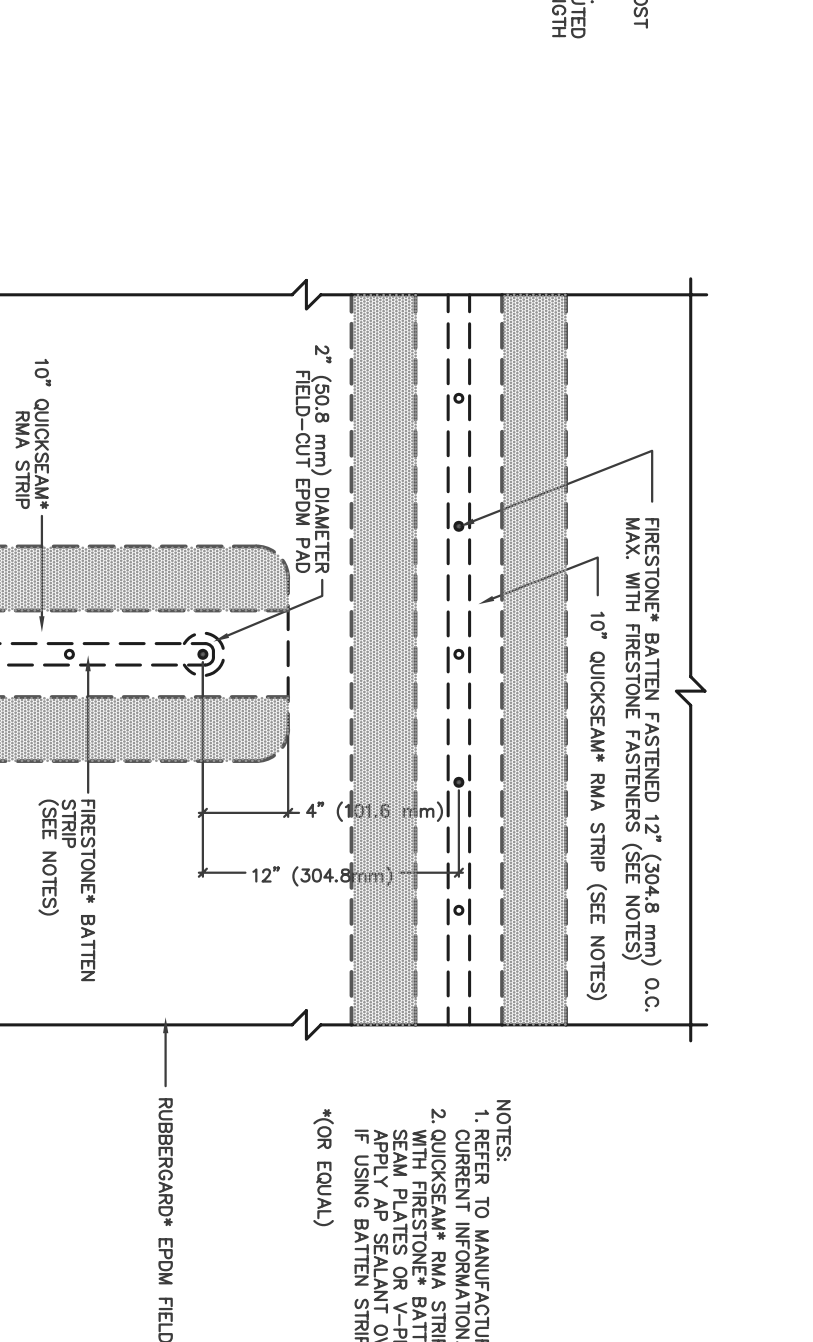
13 TERMINATION DETAIL  
SCALE: NONE



14 TERMINATION DETAIL  
SCALE: NONE



15 TERMINATION DETAIL  
SCALE: NONE



16 SPLICE DETAIL  
SCALE: NONE

NOTES:  
1. REFER TO MANUFACTURER WEBSITE FOR MOST CURRENT INFORMATION.  
2. REMOVE ALL EXISTING FLASHINGS, LEADS, ETC. PREP SURFACE MUST BE FREE OF ALL CONTAMINANTS.  
3. PREP MUST BE ANCHORED TO ENSURE CLAMPING RING.  
4. NO WINKLES OR FOLDS UNDER CLAMPING RING.  
5. BONDING ADHESIVE REQUIRED BETWEEN MEMBRANE AND INSULATION FOR FULLY ADHERED SYSTEMS.  
6. PRESTONITE FASTENERS AND HD SEAL PLATE REFER TO DETAILS (1) & (2) FOR CUT EDGE SEALANT APPLICATION.  
7. WHEN REINFORCEMENT OF THE MEMBRANE IS EXPOSED, REFER TO DETAIL (3) FOR CUT EDGE SEALANT APPLICATION.  
8. REFER TO (1) & (2) FOR MEMBRANE.  
9. BONDING ADHESIVE REQUIRED BETWEEN MEMBRANE AND INSULATION FOR FULLY ADHERED SYSTEMS.  
10. PRESTONITE FASTENERS AND HD SEAL PLATE REFER TO DETAILS (1) & (2) FOR CUT EDGE SEALANT APPLICATION.  
11. REFER TO DETAIL (3) FOR CUT EDGE SEALANT APPLICATION.

NOTES:  
1. REFER TO MANUFACTURER WEBSITE FOR MOST CURRENT INFORMATION.  
2. REMOVE ALL EXISTING FLASHINGS, LEADS, ETC. PREP SURFACE MUST BE FREE OF ALL CONTAMINANTS.  
3. PREP MUST BE ANCHORED TO ENSURE CLAMPING RING.  
4. NO WINKLES OR FOLDS UNDER CLAMPING RING.  
5. BONDING ADHESIVE REQUIRED BETWEEN MEMBRANE AND INSULATION FOR FULLY ADHERED SYSTEMS.  
6. PRESTONITE FASTENERS AND HD SEAL PLATE REFER TO DETAILS (1) & (2) FOR CUT EDGE SEALANT APPLICATION.  
7. WHEN REINFORCEMENT OF THE MEMBRANE IS EXPOSED, REFER TO DETAIL (3) FOR CUT EDGE SEALANT APPLICATION.  
8. REFER TO (1) & (2) FOR MEMBRANE.  
9. BONDING ADHESIVE REQUIRED BETWEEN MEMBRANE AND INSULATION FOR FULLY ADHERED SYSTEMS.  
10. PRESTONITE FASTENERS AND HD SEAL PLATE REFER TO DETAILS (1) & (2) FOR CUT EDGE SEALANT APPLICATION.  
11. REFER TO DETAIL (3) FOR CUT EDGE SEALANT APPLICATION.

NOTES:  
1. REFER TO MANUFACTURER WEBSITE FOR MOST CURRENT INFORMATION.  
2. REMOVE ALL EXISTING FLASHINGS, LEADS, ETC. PREP SURFACE MUST BE FREE OF ALL CONTAMINANTS.  
3. PREP MUST BE ANCHORED TO ENSURE CLAMPING RING.  
4. NO WINKLES OR FOLDS UNDER CLAMPING RING.  
5. BONDING ADHESIVE REQUIRED BETWEEN MEMBRANE AND INSULATION FOR FULLY ADHERED SYSTEMS.  
6. PRESTONITE FASTENERS AND HD SEAL PLATE REFER TO DETAILS (1) & (2) FOR CUT EDGE SEALANT APPLICATION.  
7. WHEN REINFORCEMENT OF THE MEMBRANE IS EXPOSED, REFER TO DETAIL (3) FOR CUT EDGE SEALANT APPLICATION.  
8. REFER TO (1) & (2) FOR MEMBRANE.  
9. BONDING ADHESIVE REQUIRED BETWEEN MEMBRANE AND INSULATION FOR FULLY ADHERED SYSTEMS.  
10. PRESTONITE FASTENERS AND HD SEAL PLATE REFER TO DETAILS (1) & (2) FOR CUT EDGE SEALANT APPLICATION.  
11. REFER TO DETAIL (3) FOR CUT EDGE SEALANT APPLICATION.

NOTES:  
1. REFER TO MANUFACTURER WEBSITE FOR MOST CURRENT INFORMATION.  
2. REMOVE ALL EXISTING FLASHINGS, LEADS, ETC. PREP SURFACE MUST BE FREE OF ALL CONTAMINANTS.  
3. PREP MUST BE ANCHORED TO ENSURE CLAMPING RING.  
4. NO WINKLES OR FOLDS UNDER CLAMPING RING.  
5. BONDING ADHESIVE REQUIRED BETWEEN MEMBRANE AND INSULATION FOR FULLY ADHERED SYSTEMS.  
6. PRESTONITE FASTENERS AND HD SEAL PLATE REFER TO DETAILS (1) & (2) FOR CUT EDGE SEALANT APPLICATION.  
7. WHEN REINFORCEMENT OF THE MEMBRANE IS EXPOSED, REFER TO DETAIL (3) FOR CUT EDGE SEALANT APPLICATION.  
8. REFER TO (1) & (2) FOR MEMBRANE.  
9. BONDING ADHESIVE REQUIRED BETWEEN MEMBRANE AND INSULATION FOR FULLY ADHERED SYSTEMS.  
10. PRESTONITE FASTENERS AND HD SEAL PLATE REFER TO DETAILS (1) & (2) FOR CUT EDGE SEALANT APPLICATION.  
11. REFER TO DETAIL (3) FOR CUT EDGE SEALANT APPLICATION.