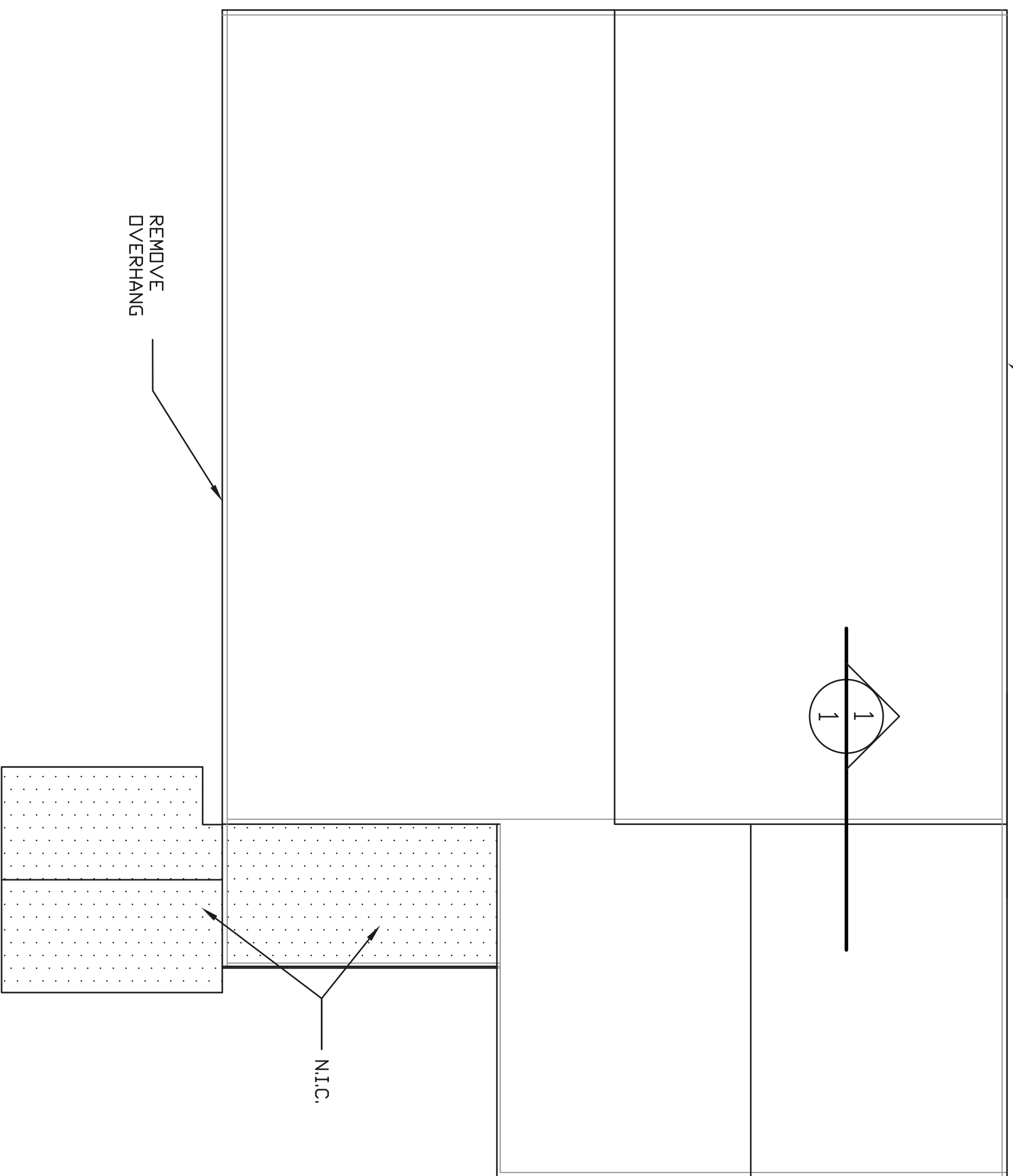
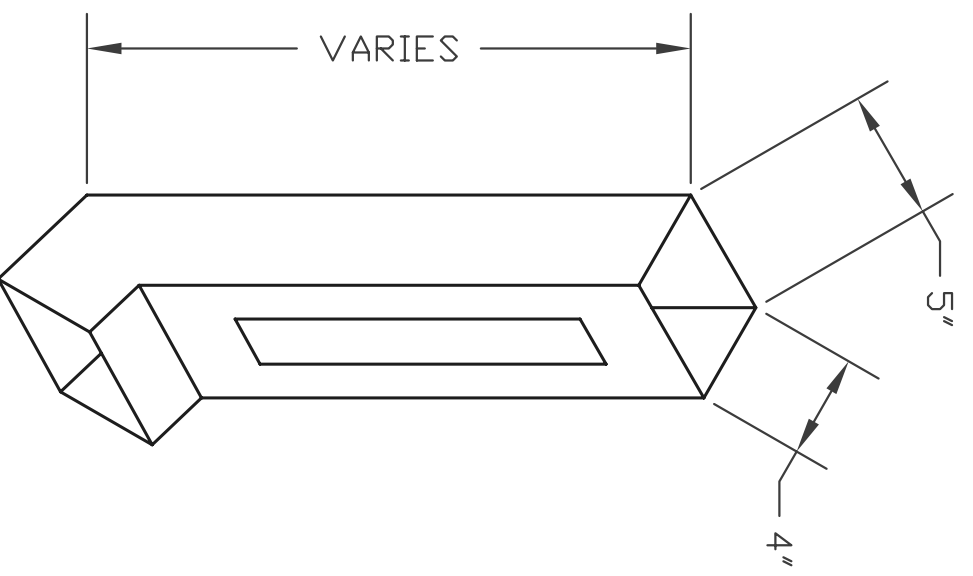


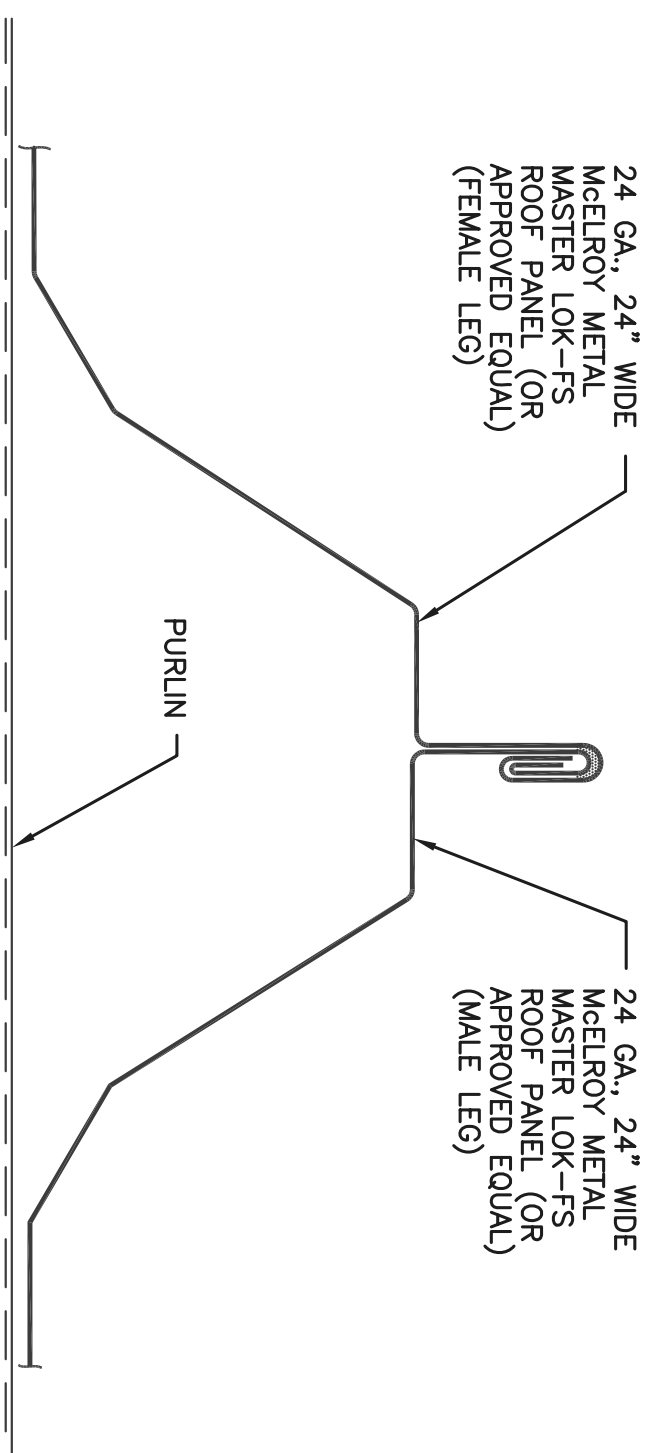
NOTE:
SEE SHEET 2 FOR DOWNSPOUT
LOCATIONS



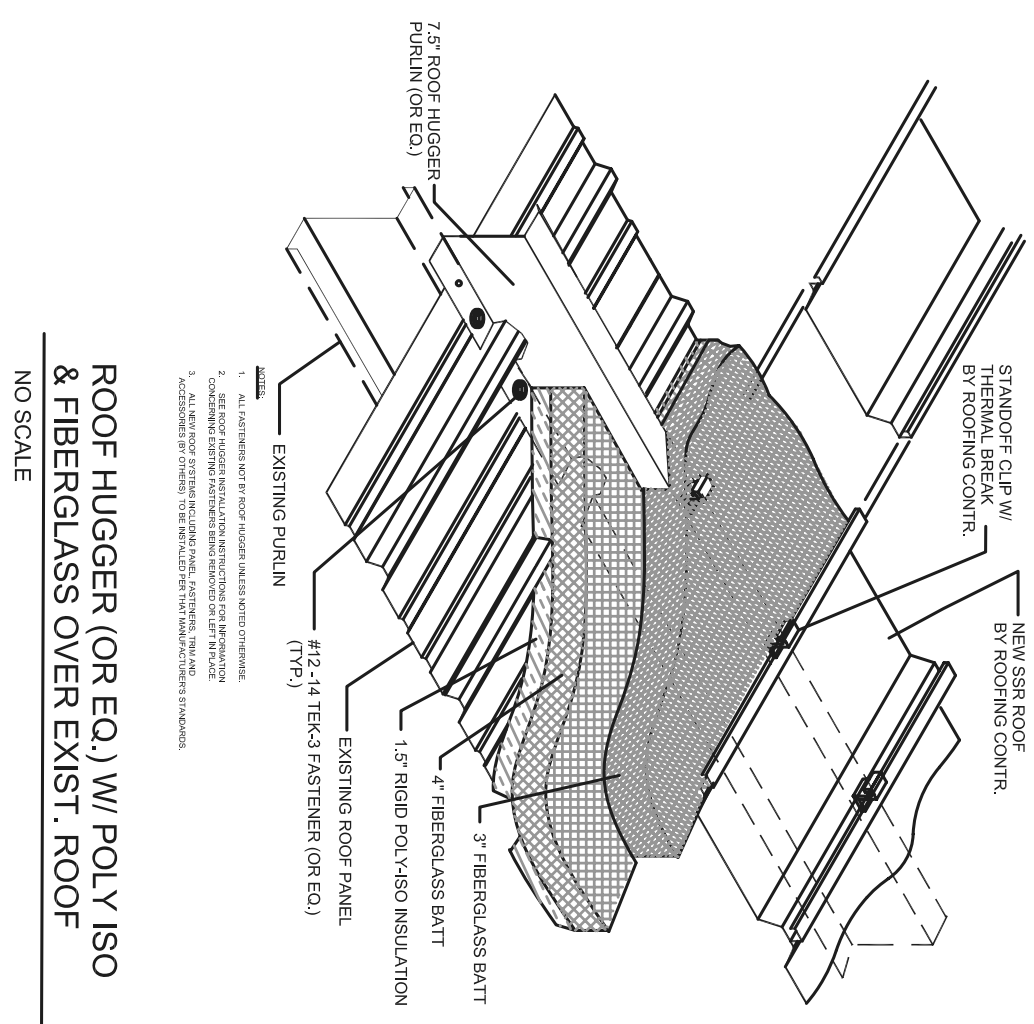
PLAN VIEW
1" = 20'-0"



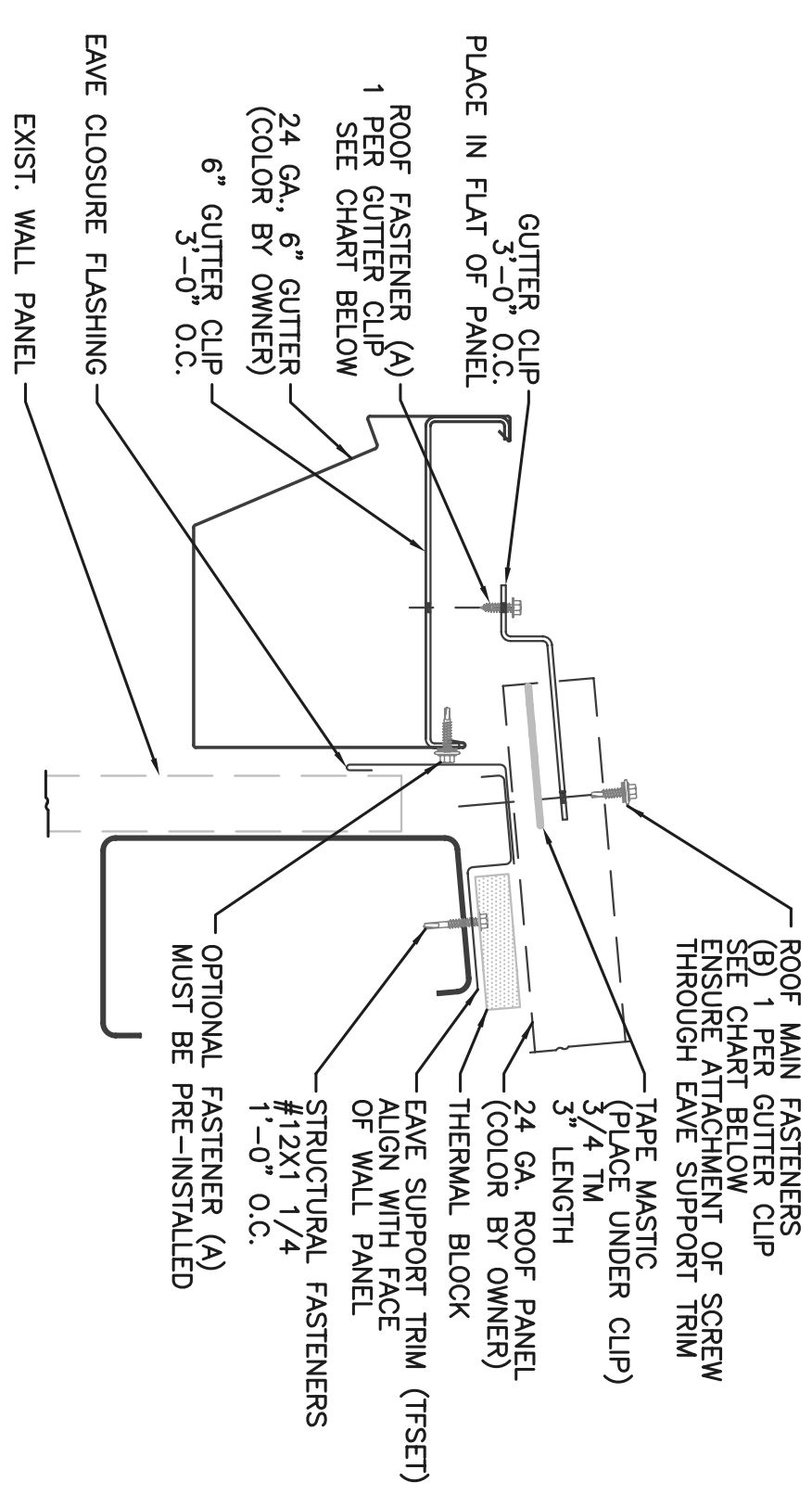
OPEN DOWNSPOUT
NO SCALE



DETAIL AT FINISHED SEAM
STANDING SEAM 360
NO SCALE

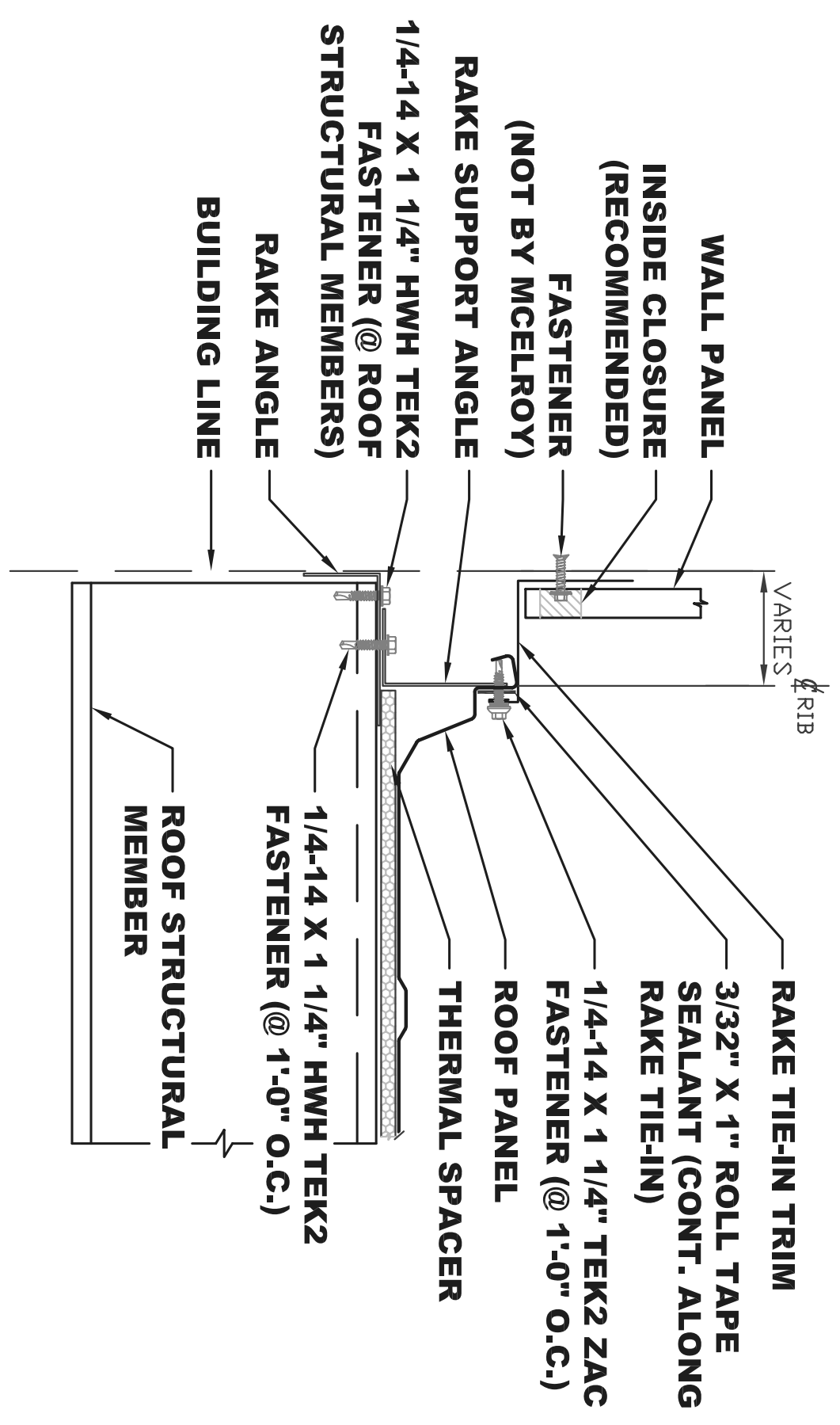


ROOF HUGGER (OR EQ.) W/ POLY ISO
& FIBERGLASS OVER EXIST. ROOF
NO SCALE



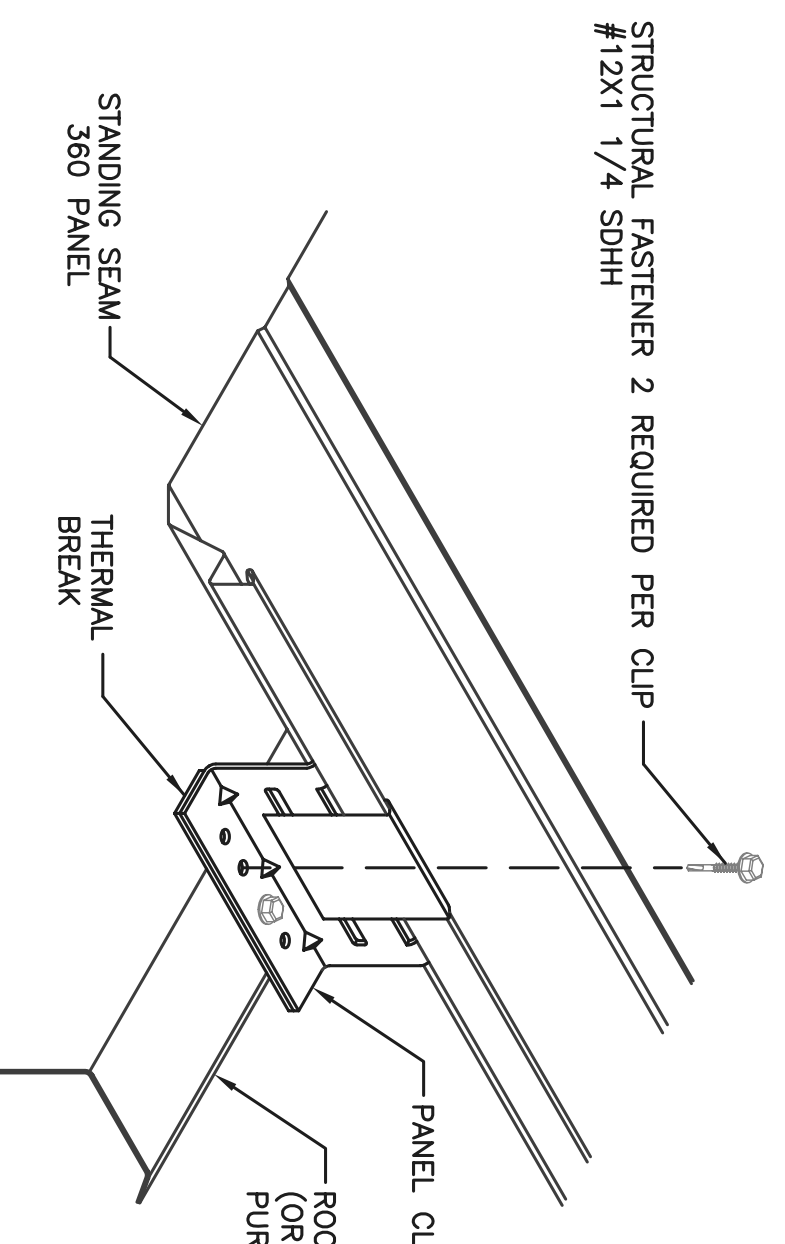
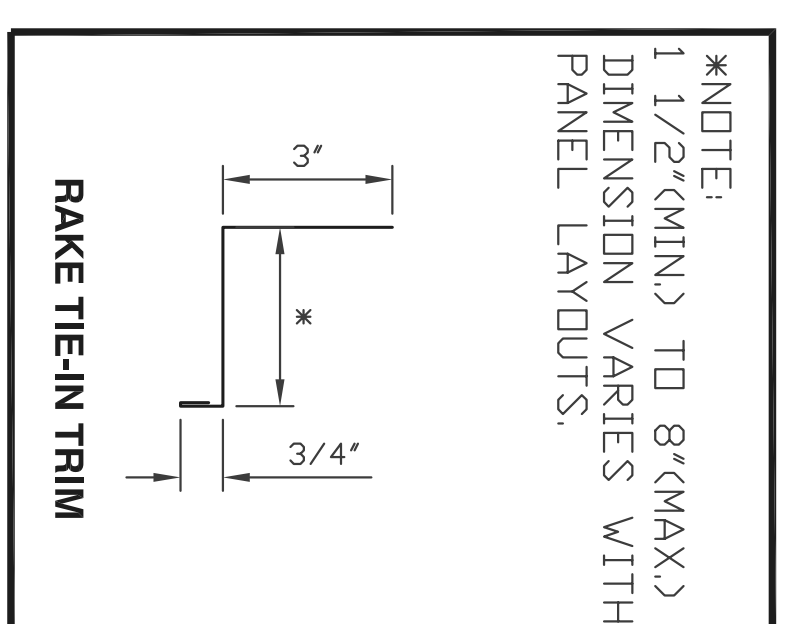
ROOF PANEL	ROOF FASTENER (A)	ROOF FASTENER (B)
LOC SEAM (LOG)	#14 X 1"	#14 X 1"
STANDING SEAM (SZP, S3P)	#14 X 1"	#14 X 1"

STANDARD GUTTER DETAIL WITH GUTTER CLIP ATTACHMENT
WITH THERMAL BLOCKS
NO SCALE

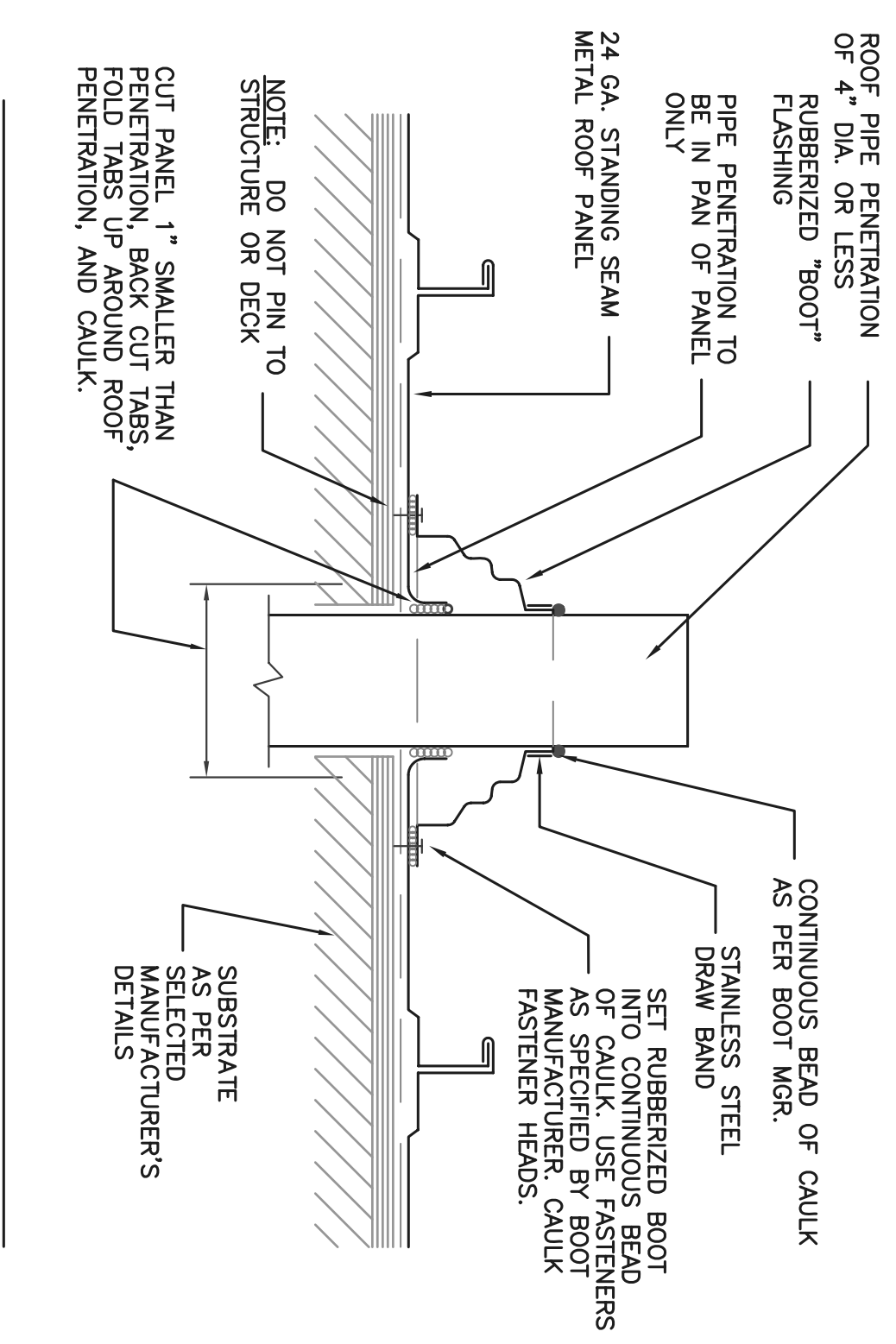


- NOTES:
1. Rake Support Angle to be installed flush with steel line using 1/4-14 x 1 1/4" HWH Tek2 w/ Shoulder fasteners at 1'-0" O.C. into the Rake Angle.
 2. Apply 3/32" x 1" Roll Tape Sealant along the female leg of panel from eave to ridge.
 3. Attach Rake Tie-in Trim to Roof Panel and Support Angle with 1/4-14 x 1 1/4" Tek2 ZAC fasteners at 1'-0" O.C. making sure to fasten into Rake Support Angle.
 4. Trim pieces lap 2". Apply 3/32" x 3/8" Butyl Tape or Butyl Tube Sealant in trim laps and Pop Rivet trims.

1 RAKE START TIE-IN DETAIL
NO SCALE



TYPICAL CLIP ATTACHMENT TO PURLIN
STANDING SEAM 360
NO SCALE



- NOTE: DO NOT PIN TO STRUCTURE OR DECK.
1. CUT HOLE TO ALLOW FOR THERMAL MOVEMENT IF PANELS ARE 30'-0" OR LONGER.
 2. IF PIPE IS MADE OF METAL, IT MUST BE PAINTED TO PREVENT RUST RUN-OFF FROM STAINING PANELS.
 3. POSITION SQUARE BASED BOOTS IN A DIAMOND ORIENTATION WHERE POSSIBLE TO AID IN DIVERGING WATER.

PENETRATION DETAIL
NO SCALE

Revisions

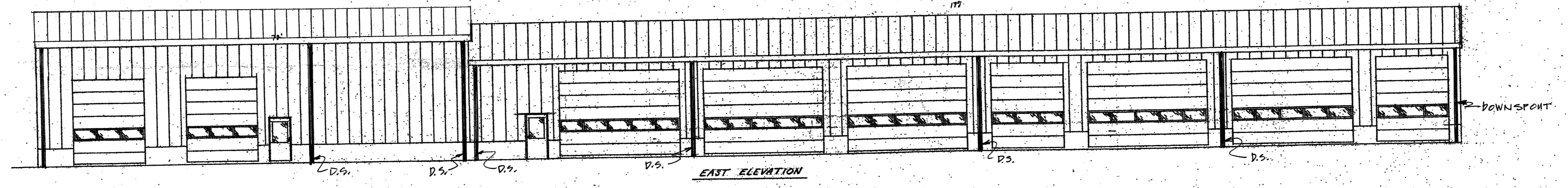
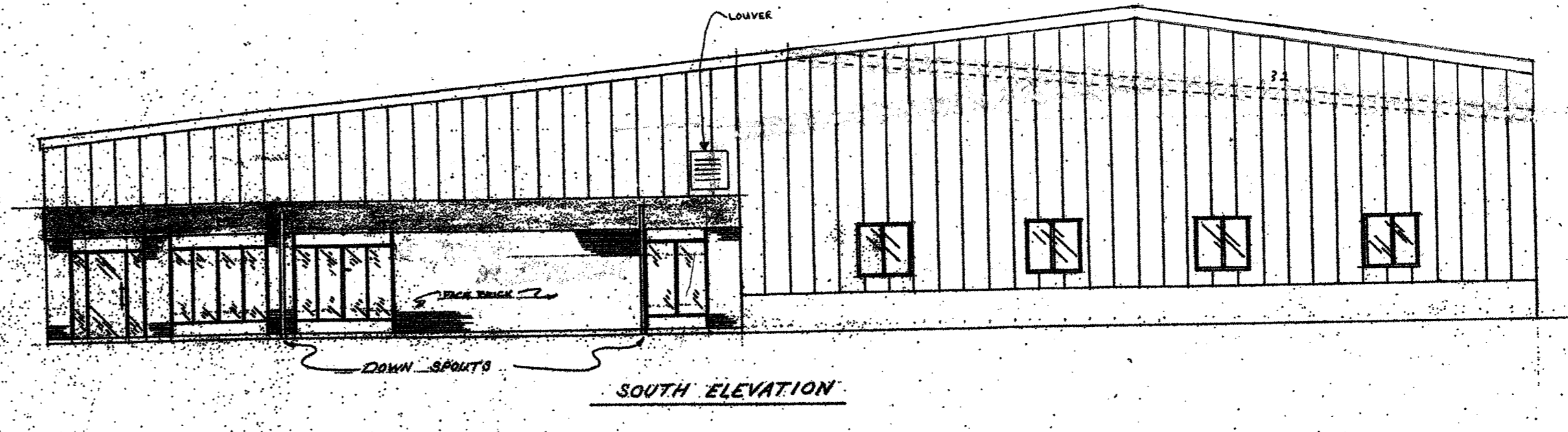
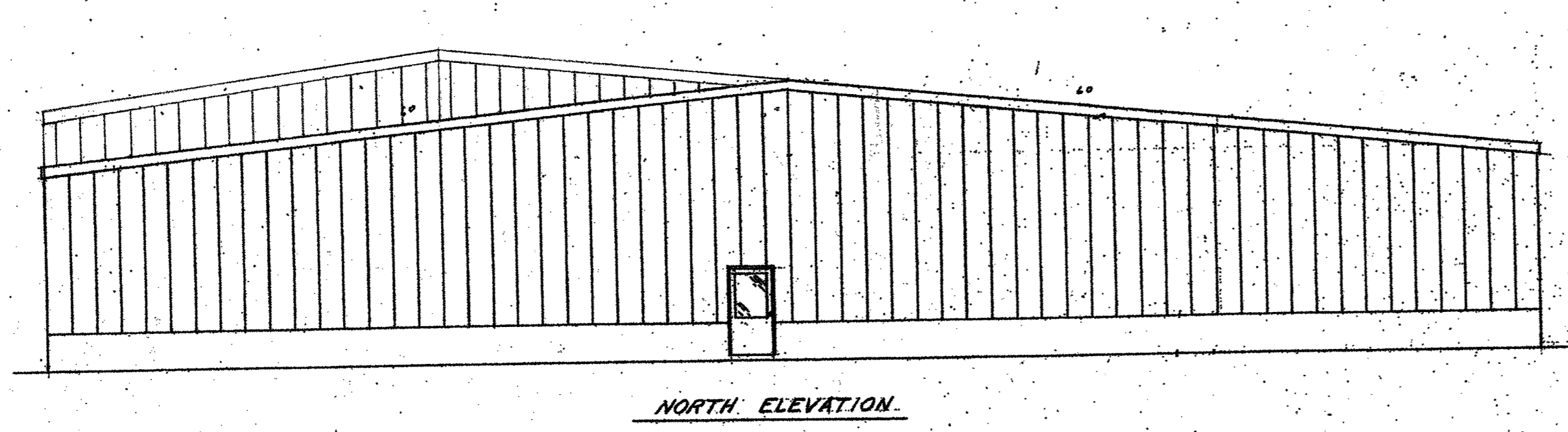
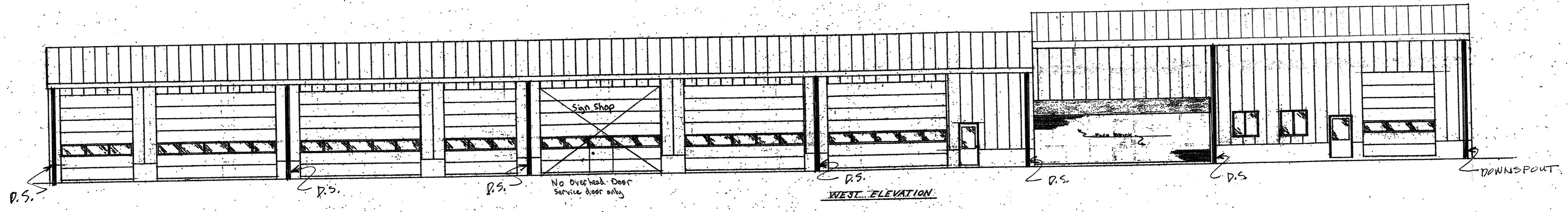
Design By: ZJS
Drawn By: JRL
Approved By: TPS

Bid No.: 312018
Date: 8-24-2012
Scale: AS NOTED

DEPARTMENT OF PUBLIC WORKS
DANE COUNTY WISCONSIN

ROOF REPLACEMENT
4318 ROBERTSON ROAD
DANE COUNTY PARKS DEPT.
MADISON, WISCONSIN

Sheet 1 of 2



DATE	REVISIONS	VOGEL BROS. BLDG. CO.	
		MADISON TRANSIT COMPANY	
		BUILDING ELEVATIONS	
		SCALE 1/8" = 1'-0"	DATE 6-28-68
			3-68-3

SHEET 2 of 2
NO SCALE