



DANE COUNTY DEPARTMENT of PUBLIC WORKS, HIGHWAY and TRANSPORTATION

County Executive
Kathleen M. Falk

1919 Alliant Energy Center Way ♦ Madison, Wisconsin 53713
Phone: (608) 266-4018 ♦ Fax: (608) 267-1533

Commissioner / Director
Gerald J. Mandli

August 10, 2007

ATTENTION ALL REQUEST FOR BID HOLDERS NO. 107116

ADDENDUM NO. 2

DESIGN & PROVIDE ANTENNA TOWER

PUBLIC SAFETY BUILDING

115 WEST DOTY STREET

MADISON, WISCONSIN

BIDS DUE: TUESDAY, AUGUST 21, 2007, 2:00 PM. DUE DATE AND TIME ARE NOT CHANGED BY THIS ADDENDUM.

This Addendum is issued to clarify, revise, add to, or delete information in the original Bidding Documents and forms a part of the Contract Documents. Acknowledge receipt of this Addendum in the space provided on the Bid Form. Failure to do so may subject bidder to disqualification. The bidder has the singular responsibility to make this Addendum available to sub-bidders that are not plan holders of record.

The legal notice for this project stated that the pre-bid meeting was to take place at the Public Safety Building located at 215 West Doty Street. The address of the Public Safety Building, and the location of the original pre-bid meeting, is actually 115 West Doty Street. Due to the confusion this created, Dane County will be holding another mandatory pre-bid meeting Tuesday, August 14, 2007 at 1:00 PM. This meeting will begin in the lobby of the Public Safety Building, which is located at 115 W Doty Street. This meeting is mandatory for anyone wishing to bid who was not present at the original pre-bid meeting. This meeting is NOT mandatory for bidders who were present for the original pre-bid meeting.

If additional new information is discussed at the second pre-bid meeting, it will be disclosed to all plan holders via an addendum. The following information was discussed during the original pre-bid meeting:

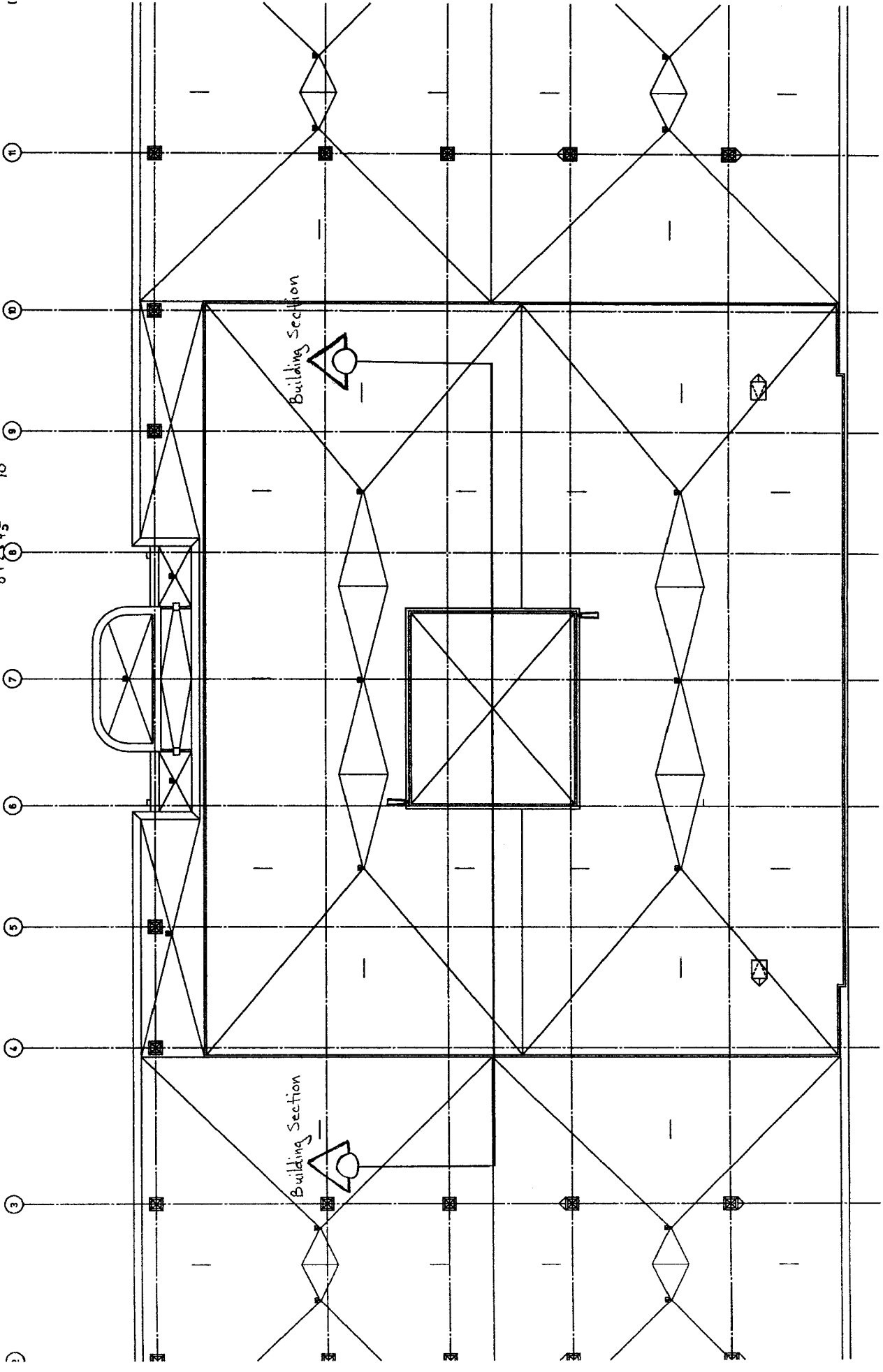
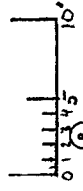
- Introduction – sign in
- 5% Bid Bond and 100% Performance/Payment Bond are required
- Bid requirements
 - Signed Bid Form
 - 5% Bid Bond
 - Fair Labor Practices Certification form
 - Must be a *paid registered vendor* with Dane County
 - www.danepurchasing.com
 - 608/266-4131
- Plans, Specifications and Addenda available on Purchasing website or in our office – no charge
- Or equal clause
 - Substitutions 7 days before bid opening will be reviewed by Project Manager. If materials or equipment are found to equal to those specified, and addendum will be issued stating such to all plan holders.
 - Substitutions may be submitted up to 15 days after Award of Contract. However, Project Manager reserves the right to not consider any and all product substitutions submitted after 7 days before the bid opening. Therefore, bidder should assume the worst case scenario (ie: the substitution will not be approved) when submitting bids.

- Parking – 2 spots available in the southeast surface parking lot. Coordinate before starting Work.
- Utilities – there are electrical outlets located inside the elevator shaft which are accessible to personnel working on the roof.
- Work area, property limits and safety issues
 - Work area will be restricted to the roof and the southeast parking lot. Take appropriate safety precautions when working on the roof and while lifting with the crane.
- Field office and access to facilities
 - Crew will have access to staff restroom
 - May store materials and tools on roof if they are secured in a job box.
- Project schedule:
 - Bids due by: 08-21-07
 - Approvals and Notice To Proceed by: 09-05-07
 - Completed by: 12-15-07
- Coordinate schedule with Owner activities and procedures
 - Crew needs to be approved in advance
 - Information needed:
 - First, middle, and last names
 - Date of birth
 - Race
 - Leave items prohibited from secure building, such as pocket knives, lighters, cigarettes, etc. outside.
 - Sheriff will need to have a deputy supervise any Work being done inside the building. Coordinate this with the sheriff at least one week in advance for scheduling purposes.
 - Crane operation – coordinate with Sheriff’s shipping and receiving.
- Progress meetings weekly during construction – this may be changed by Project Manager as needed.
- Submittals required from winning bidder
 - Signed NTP
 - Insurance with “Dane County” listed as additional insured
 - Recycling form
 - Antenna plans & drawings w/ Engineer’s signed stamp
 - Product data on tower, equipment attachment devices, lightning protection system, and configurations.
 - Any substitutions
- No as-built required
- Communication work technical explanation and questions with Dave Janda
 - Dane County will furnish the ½” co-axial cable feed lines and the connectors between the cables and the antennas.
 - Contractor will provide the equipment needed to attach the antennas to the tower, and contractor will perform the installation of these antennas. In addition, Contractor will provide a cable tray to protect these cables from the elements.
 - Contractor will provide a lightning protection system as described in the Construction Documents. This system can be attached to the existing grounding wire located on the roof.
- Questions on procedure or requirements
 - The three (3) attached sheets provide additional information on the structural elements of this roof, as requested.

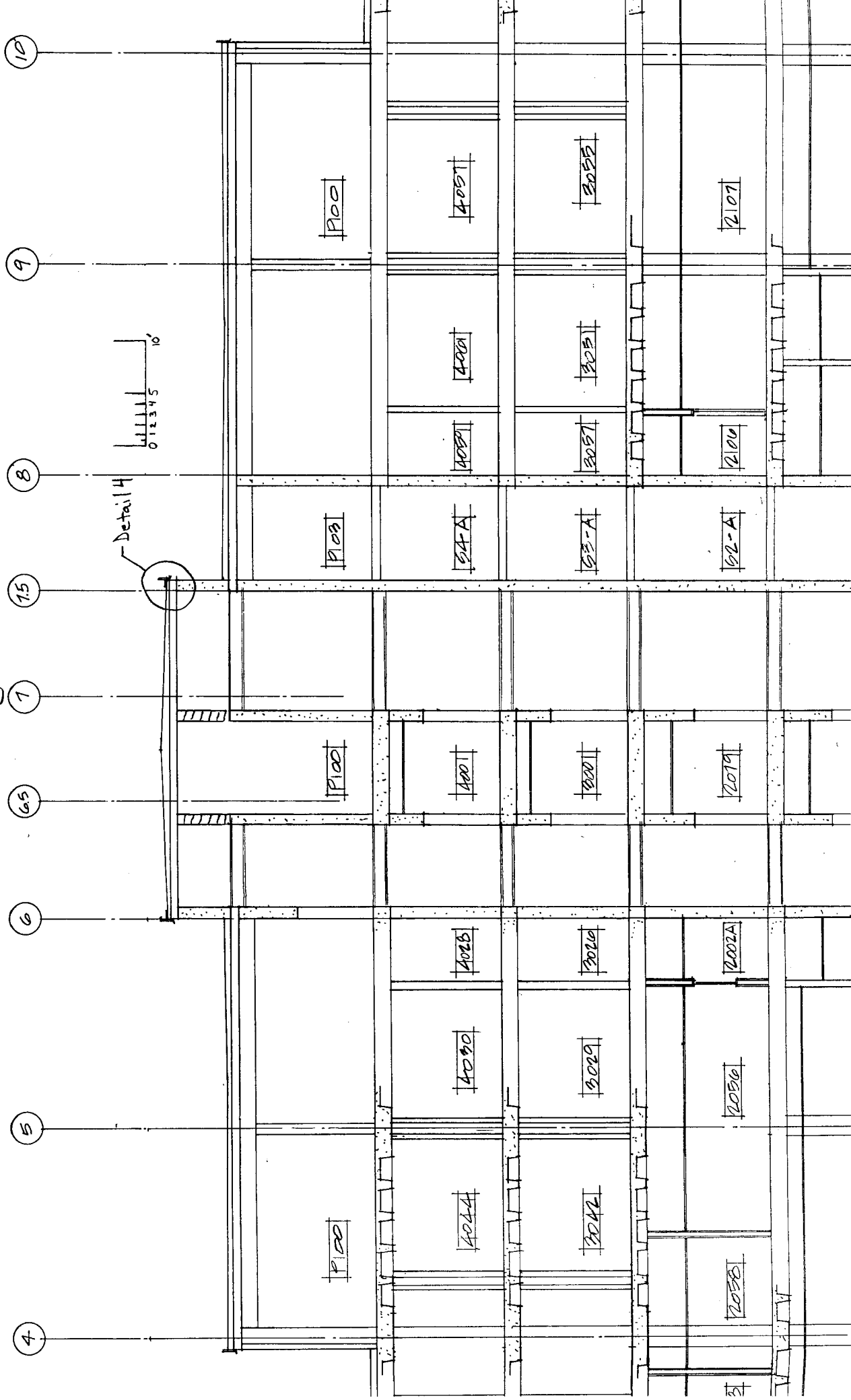
If any additional information about this Addendum is needed, please call John Welch at 608/266-4592.

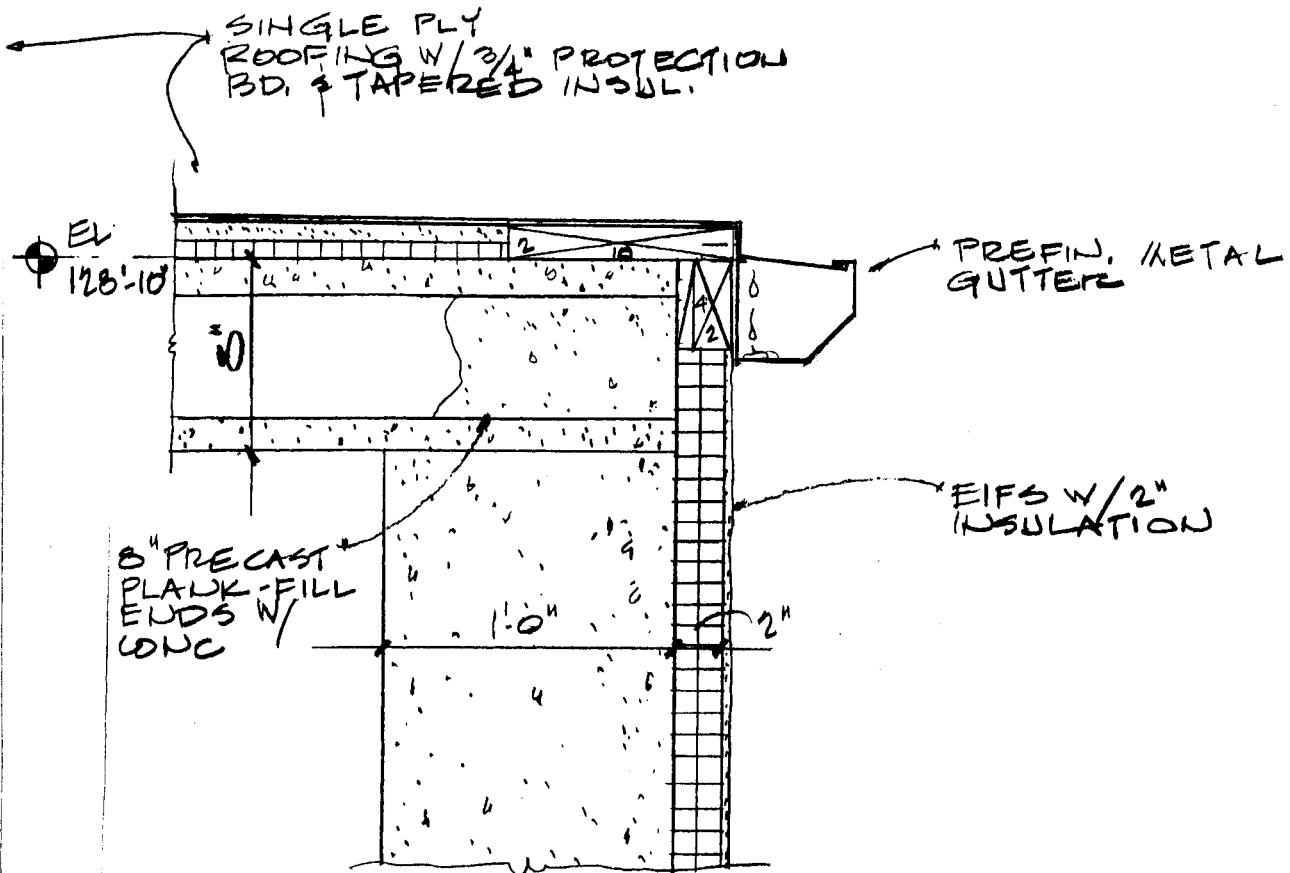
Sincerely,
 John Welch
 Project Manager

Roof Plan



Building Section





4 DETAIL
 1 1/2" = 1'-0"