

# OVERALL SITE PLANTING PLAN



## SITE SURVEY INFORMATION

M&A PROFESSIONAL SERVICES  
2901 INTERNATIONAL LANE  
MADISON, WI 53704  
608-242-7779

DRAWING LABELED: EXISTING TOPOGRAPHY- ARCTIC PASSAGE  
DANE COUNTY HENRY VILAS ZOO

DATE: 11-07-13  
JOB NO: 06441000

## LANDSCAPE CALCULATIONS

(a) One (1) landscape unit shall be provided for each three hundred (300) square feet of developed area, with the exception of the IL and the IG districts as specified in (b) below.

Total square footage of developed area= 117,557sf  
Developed area divided by three hundred (300) square feet= 392 Landscape Units

(c) One landscape unit consists of five (5) landscape points. Landscape points are calculated as shown in the following table.

Landscape units multiplied by five (5) landscape points = 1960 Total Points Required

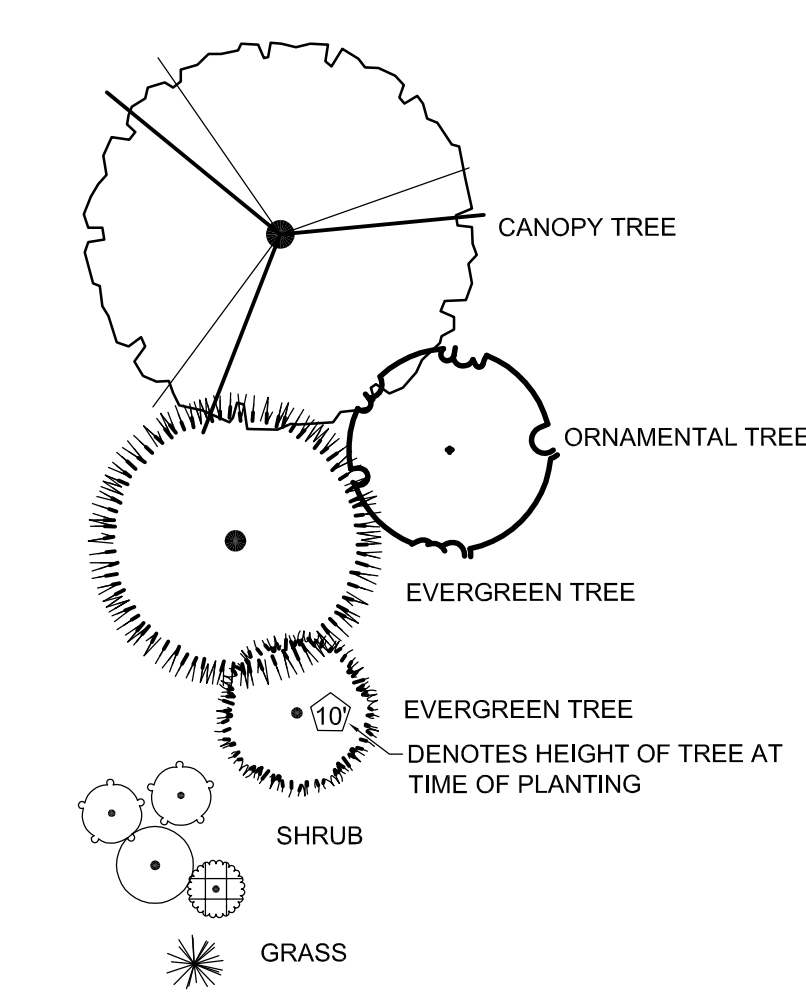
PLANT TYPE/ ELEMENT	MINIMUM SIZE AT INSTALLATION	POINTS	CREDITS/ EXISTING LANDSCAPING		NEW PROPOSED LANDSCAPING	
			QUANTITY	POINTS ACHIEVED	QUANTITY	POINTS ACHIEVED
OVERSTORY DECIDUOUS TREE	2 1/2" CALIPER	35	2	70	14	490
ORNAMENTAL TREE	1 1/2" CALIPER	15			2	30
EVERGREEN TREE	3 FEET TALL	15			207	3105
SHRUB, DECIDUOUS	18" OR 3 GALLON CONTAINER SIZE	2			235	470
SHRUB, EVERGREEN	18" OR 3 GALLON CONTAINER SIZE	3			47	141
ORNAMENTAL GRASSES	18" OR 3 GALLON CONTAINER SIZE	2			126	252
ORNAMENTAL/ DECORATIVE FENCING OR WALL	N/A	4 PER 10 LINEAL FT.			--	--
<b>SUB TOTALS</b>				70		4488

TOTAL NUMBER OF POINTS PROVIDED 4558

## GENERAL PLANTING NOTES

- PRIOR TO BEGINNING ANY WORK ON THE SITE, THE CONTRACTOR SHALL CONTACT THE "PUBLIC WORKS PROJECT ENGINEER" AND THE ARCHITECT FOR SPECIFIC INSTRUCTIONS RELEVANT TO THE SEQUENCING OF WORK. REPORT ANY ISSUES IN SITE CONDITIONS AND CONSTRUCTION THAT MAY AFFECT THE PLANTING LAYOUT TO THE PROJECT ARCHITECT PRIOR TO STARTING CONSTRUCTION.
- LANDSCAPE CONTRACTOR SHALL PROVIDE ALL LABOR, MATERIALS AND SERVICE NECESSARY TO FURNISH AND INSTALL PLANTINGS AS SPECIFIED HEREIN AND AS SHOWN ON THESE PLANS.
- NO MATERIAL SUBSTITUTIONS SHALL BE MADE WITHOUT LANDSCAPE ARCHITECT'S APPROVAL. ALTERNATIVE MATERIALS OF SIMILAR SIZE AND CHARACTER MAY BE CONSIDERED IF SPECIFIED PLANT MATERIALS CANNOT BE OBTAINED. LANDSCAPE ARCHITECT RESERVES THE RIGHT TO REVISE PLANT LIST AS DEEMED NECESSARY. DEVIATION FROM PLANT LIST COULD AFFECT THE HEALTH OF THE ANIMALS.
- LANDSCAPE CONTRACTOR IS TO STAKE ALL PLANT MATERIAL (TREE AND SHRUB) LOCATIONS AS WELL AS PLANTER BED EDGER LOCATIONS PRIOR TO INSTALLATION. CONTRACTOR IS TO CONTACT PROJECT ARCHITECT FOR PRE-INSTALLATION CONFERENCE AND FINAL APPROVAL OF STAKING. ADJUST PLANT LOCATIONS ONLY AS NECESSARY TO AVOID SITE CONFLICTS.
- UTILITIES HAVE BEEN SHOWN ON THE PLAN FOR ROUGH LOCATION OF SERVICES. CONTRACTOR SHALL LOCATE ALL UTILITIES BEFORE WORK. LOCATE EXACT UTILITY LOCATIONS BY CONTACTING UTILITY LOCATOR SERVICES. CONTRACTOR WILL BE RESPONSIBLE FOR THE REPAIR OF ANY DAMAGE HE MAY CAUSE TO UTILITIES.
- PROTECT AND SAVE THE EXISTING PLANT MATERIALS SHOWN ON PLANS UNLESS NOTED TO BE REMOVED.
- GENERAL CONTRACTOR SHALL PROVIDE 4" OF TOPSOIL AT ALL SOD, SEED AND PLANTING AREAS. GRADE SHALL BE ADJUSTED FOR SOD THICKNESS. ANY BERMS SHOWN ON PLANS ARE REFLECTED ON GRADING PLAN. FINISH GRADING SHALL BE PERFORMED LANDSCAPE CONTRACTOR.
- WHEN CLAY SOIL IS ENCOUNTERED IN THE ESTABLISHMENT OF THE LAWN OR THE INSTALLATION OF THE PLANT MATERIAL IT SHALL BE IMPROVED IN ACCORDANCE WITH STANDARD TRADE PRACTICE.
- NO IRRIGATION SYSTEM WILL BE INSTALLED. CONTRACTOR TO WATER AND MAINTAIN PLANTS FOR 90 DAYS AFTER SUBSTANTIAL COMPLETION. CONTRACTOR SHALL SUPPLY ENOUGH WATER TO MAINTAIN PLANTS IN A HEALTHY CONDITION.
- SOD TYPE SHALL BE LOCALLY AVAILABLE HARDY BLENDED VARIETIES SHOWN ON PLANT SCHEDULE. SEED TYPE SHALL BE LOCALLY AVAILABLE AS WELL.
- BACKFILL FOR PLANT EXCAVATIONS TO BE CLEAN NATURAL SOIL, EXCAVATED FROM PLANTING PITS MIXED WITH COMPOST AND WELL-ROTTED MANURE AT A RATIO OF THREE (3) PARTS SOIL TO ONE (1) PART COMPOST AND WELL-ROTTED MANURE.
- FERTILIZE ALL PLANTS WITH MILORGANITE FERTILIZER AS DIRECTED BY INSTRUCTIONS ON FERTILIZER.
- CULTIVATE GROUND COVER PLANTING BEDS TO DEPTH OF 8". TILL COMPOST AND WELL-ROTTED MANURE INTO THE PLANTING BED AT THE APPROXIMATE RATIO OF ONE (1) PART COMPOST/MANURE TO THREE (3) PARTS SOIL.
- ALL PLANT MATERIALS SHALL BE PROTECTED FROM THE DRYING ACTION OF THE SUN AND WIND AFTER BEING DUG, WHILE BEING TRANSPORTED, AND WHILE AWAITING PLANTING. BALLS OF PLANTS WHICH CANNOT BE PLANTED IMMEDIATELY SHALL BE PROTECTED FROM DRYING ACTION BY COVERING THEM WITH MOIST MULCH. PERIODICALLY, APPLY WATER TO MULCH-COVERED BALLS TO KEEP MOIST. IF PLANTING SHOULD OCCUR DURING GROWING SEASON, APPLY ANTI-DESSICANT TO LEAVES BEFORE TRANSPORT TO REDUCE LIKELIHOOD OF WINDBURN. REAPPLY ANTI-DESSICANT AFTER PLANTING TO REDUCE TRANSPARATION.
- ALL PLANT MATERIALS SHALL HAVE BACKFILL CAREFULLY PLACED AROUND BASE AND SIDES OF BALL TO TWO-THIRDS (2/3) DEPTH OF BALL, THEN THOROUGHLY SOAKED WITH WATER TO ALLOW SETTLEMENT. ALL WIRE, BURLAP FASTENERS AND LOOSE BURLAP AROUND BASE OF TRUNK SHALL BE REMOVED. REMAINDER OF PIT SHALL THEN BE BACKFILLED, ALLOWING FOR DEPTH OF MULCH, SAUCER AND SETTLEMENT OF BACKFILL. BACKFILL SHALL THEN BE THOROUGHLY WATERED ONCE AGAIN.
- AFTER PLANTING IS COMPLETED, REPAIR INJURIES TO ALL PLANTS AS REQUIRED. LIMIT AMOUNT OF PRUNING TO A MINIMUM NECESSARY TO REMOVE DEAD OR INJURED TWIGS AND BRANCHES. PRUNE IN SUCH A MANNER AS NOT TO CHANGE NATURAL HABIT OR SHAPE OF PLANT. MAKE CUTS FLUSH, LEAVING NO STUBS. CUTS OF ONE INCH (1") OR MORE TO BE PAINTED WITH TREE PAINT. CENTRAL LEADERS SHALL NOT BE REMOVED.
- PLANT GROUND COVER/ANNUALS WITHIN ONE FOOT (1') OF TRUNK OF TREES OR SHRUBS PLANTED WITHIN AREA. PLANTING ARRANGEMENT SHALL BE TRIANGULAR, WITH PROPER ON-CENTER SPACING BETWEEN PLANTS.
- PLANTING BEDS ARE TO BE FREE OF WEEDS AND GRASS. TREAT PLANTING BEDS NOT CONTAINING PERENNIALS/ WILDFLOWERS WITH A PRE-EMERGENT HERBICIDE PRIOR TO PLANTING AND MULCH PLACEMENT. APPLY IN ACCORDANCE WITH STANDARD TRADE PRACTICE.
- USE BARK CHIP OR PINE NUGGETS IN ALL SHRUB PLANTING BEDS AND PINE NEEDLE MULCH UNDER ALL EVERGREEN TREES. LANDSCAPE CONTRACTOR SHALL SUBMIT A SAMPLE OF MULCH FOR APPROVAL PRIOR TO STARTING CONSTRUCTION. SIZE OF MATERIAL TO RANGE FROM 1/2" ONLY. PLACE 3"-4" OF MULCH IN ALL SHRUB BEDS. PLACE 1" OF MULCH IN GROUND COVER BEDS. PLACE 4" OF MULCH IN ALL TREE SAUCERS.
- BOULDERS SHOWN ON THE PLANS ARE TO BE SALVAGED FROM SITE, AND IF NOT AVAILABLE, OF A MATERIAL INDIGENOUS TO REGION. REFER TO BOULDER SCHEDULE FOR SIZE OF BOULDERS. PROJECT ARCHITECT SHALL APPROVE SELECTION AND PLACEMENT OF BOULDERS ON SITE.
- REMOVE ALL RUBBISH, EQUIPMENT AND MATERIAL AND LEAVE THE AREA IN A NEAT, CLEAN CONDITION EACH DAY. MAINTAIN PAVED AREAS UTILIZED FOR HAULING EQUIPMENT AND MATERIALS BY OTHER TRADES IN A CLEAN AND UNOBSTRUCTED CONDITION AT ALL TIMES. REMOVE SOIL OR DIRT THAT ACCUMULATED DURING OR AS A RESULT OF PLANTING OPERATIONS EACH DAY AND AT THE COMPLETION OF PLANTING OPERATIONS.
- ALL PLANTS SHALL BE INSPECTED BY THE OWNER AND PROJECT ARCHITECT AT SUBSTANTIAL COMPLETION. CONTRACTOR SHALL REPLACE IMMEDIATELY ANY PLANTS NOT IN HEALTHY AND VIGOROUS CONDITION AT THAT TIME AT NO EXPENSE TO THE OWNER.
- ANY VEGETATED AREA DISTURBED BY THE CONSTRUCTION PROCESS MUST BE RESTORED BY REPAIRING THE SOIL BED AND REESTABLISHING ORIGINAL PLANTINGS.
- LANDSCAPE CONTRACTOR IS TO REMOVE TREE STAKES AND ALL DEAD WOOD ON TREES ONE YEAR AFTER PROVISIONAL/FINAL ACCEPTANCE.
- CONTRACTOR TO PROVIDE CARE AND MAINTENANCE INSTRUCTIONS TO OWNER IN BOTH WRITTEN AND BOUND FORMAT FOR ALL PLANT MATERIALS.
- IN ALL PLANTING BEDS- ADD GOOD QUALITY ORGANIC MATTER AT THE RATE OF 3 TO 6 CUBIC YARDS PER 1,000 SQUARE FOOT AREA, AND THOROUGHLY MIX WITH THE EXISTING SOIL TO A DEPTH OF 6 INCHES.

## LEGEND



## BOULDER SCHEDULE

SYMBOL	AVG. SIZE (DIA.)
R-1	48"
R-2	36"-48"
R-3	24"-36"

BOULDERS AS SELECTED BY OWNER/ LANDSCAPE ARCHITECT AND SALVAGED FROM SITE

ALL LIVE ROCK WITHIN ANIMAL EXHIBITS SHALL BE AT A MINIMUM- 15CUFT OR 2,000LBS. WITH A GENERALLY FLAT/ ANGULAR BASE (NOT ROLLABLE). APPROX SIZES RANGE FROM 48"x36"x15" or 30"x30"x30".

**wdm ARCHITECTS**  
WDM Architects P.A.  
105 North Washington  
Wichita, KS 67202-2815  
T 316.262.4700  
F 316.262.0002  
wdmarchitects.com

we do more  
**henry vilas ZOO**

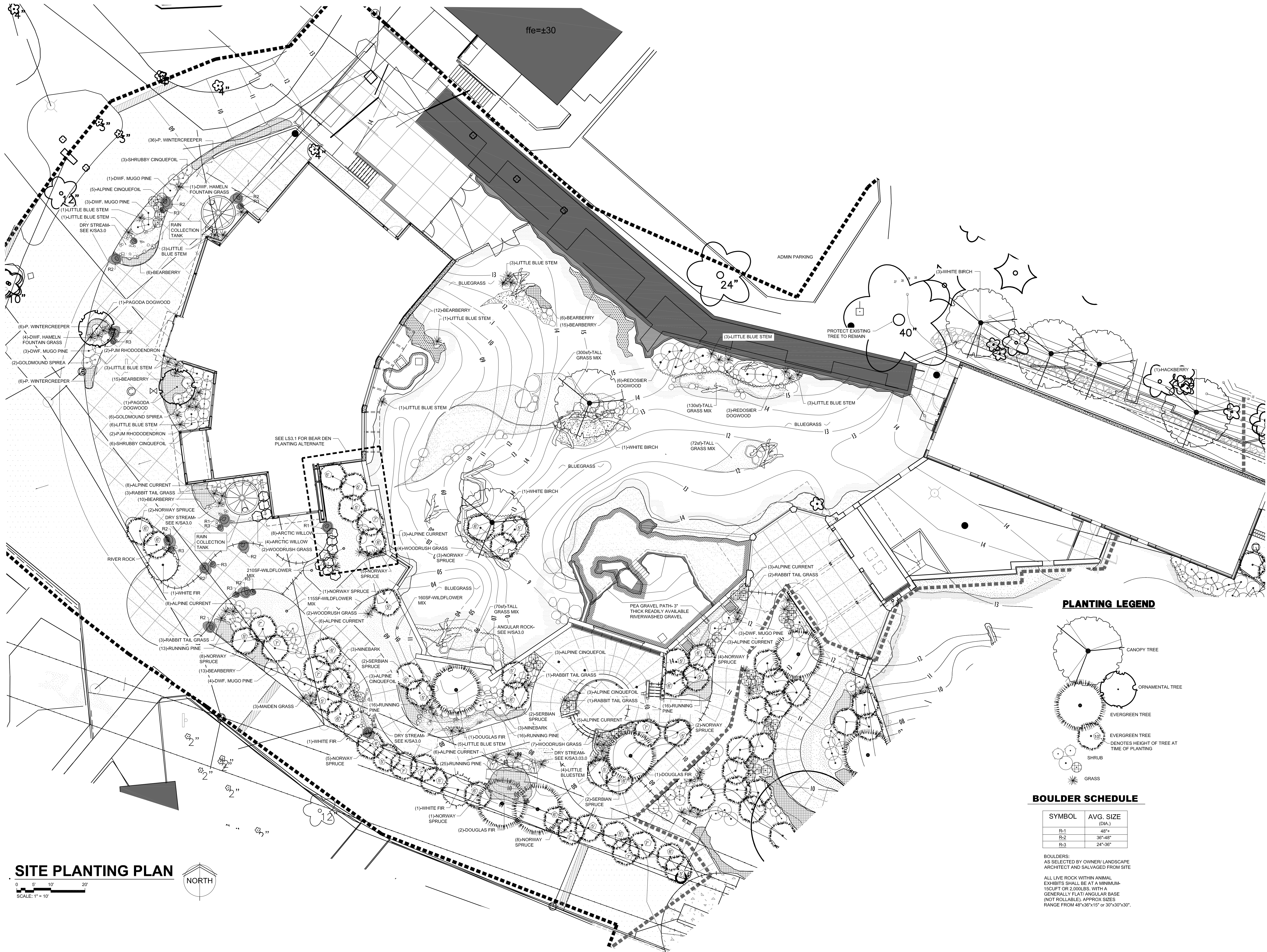
**ARCTIC ANIMAL EXHIBIT AND CONCESSIONS**  
RFB No. 313086  
Henry Vilas Zoo - County of Dane  
Department of Public Works  
Henry Vilas Zoo  
702 S Randall Ave  
Madison, Wisconsin

PRINTS ISSUED  
07.26.2013 - Schematic Design  
08.23.2013 - Design Development  
09.23.2013 - 65% CD's  
10.07.2013 - Pricing Set  
10.21.2013 - 95% CD's  
11.13.2013 - Bid Documents

WDM No. 13046 drawn: NS  
checked: SR

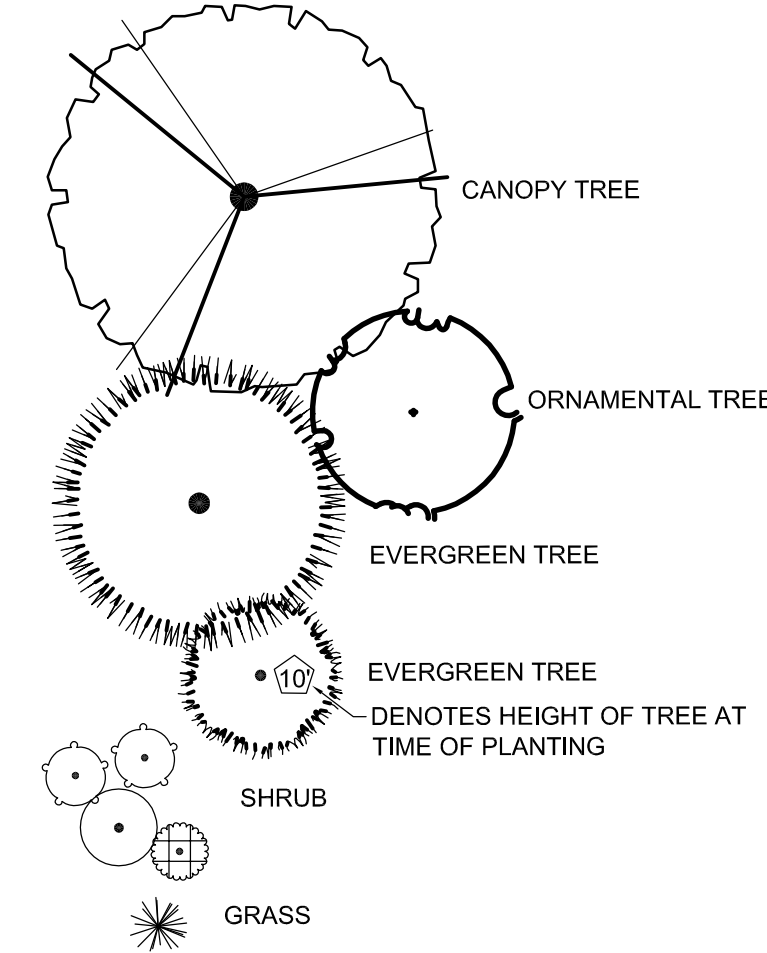
OVERALL SITE PLANTING PLAN

# LS1.0



**SITE PLANTING PLAN**  
 0' 5' 10' 20'  
 SCALE: 1" = 10'  
 NORTH

**PLANTING LEGEND**



**BOULDER SCHEDULE**

SYMBOL	AVG. SIZE (DIA.)
R-1	48"
R-2	36"-48"
R-3	24"-36"

BOULDERS:  
 AS SELECTED BY OWNER/ LANDSCAPE ARCHITECT AND SALVAGED FROM SITE  
 ALL LIVE ROCK WITHIN ANIMAL EXHIBITS SHALL BE AT A MINIMUM 15CUFT OR 2,000LBS. WITH A GENERALLY FLAT/ ANGULAR BASE (NOT ROLLABLE). APPROX SIZES RANGE FROM 48"x36"x15" or 30"x30"x30".

**wdm ARCHITECTS**  
 WDM Architects P.A.  
 105 North Washington  
 Wichita, KS 67202-2815  
 T 316.262.4700  
 F 316.262.0002  
 wdmarchitects.com

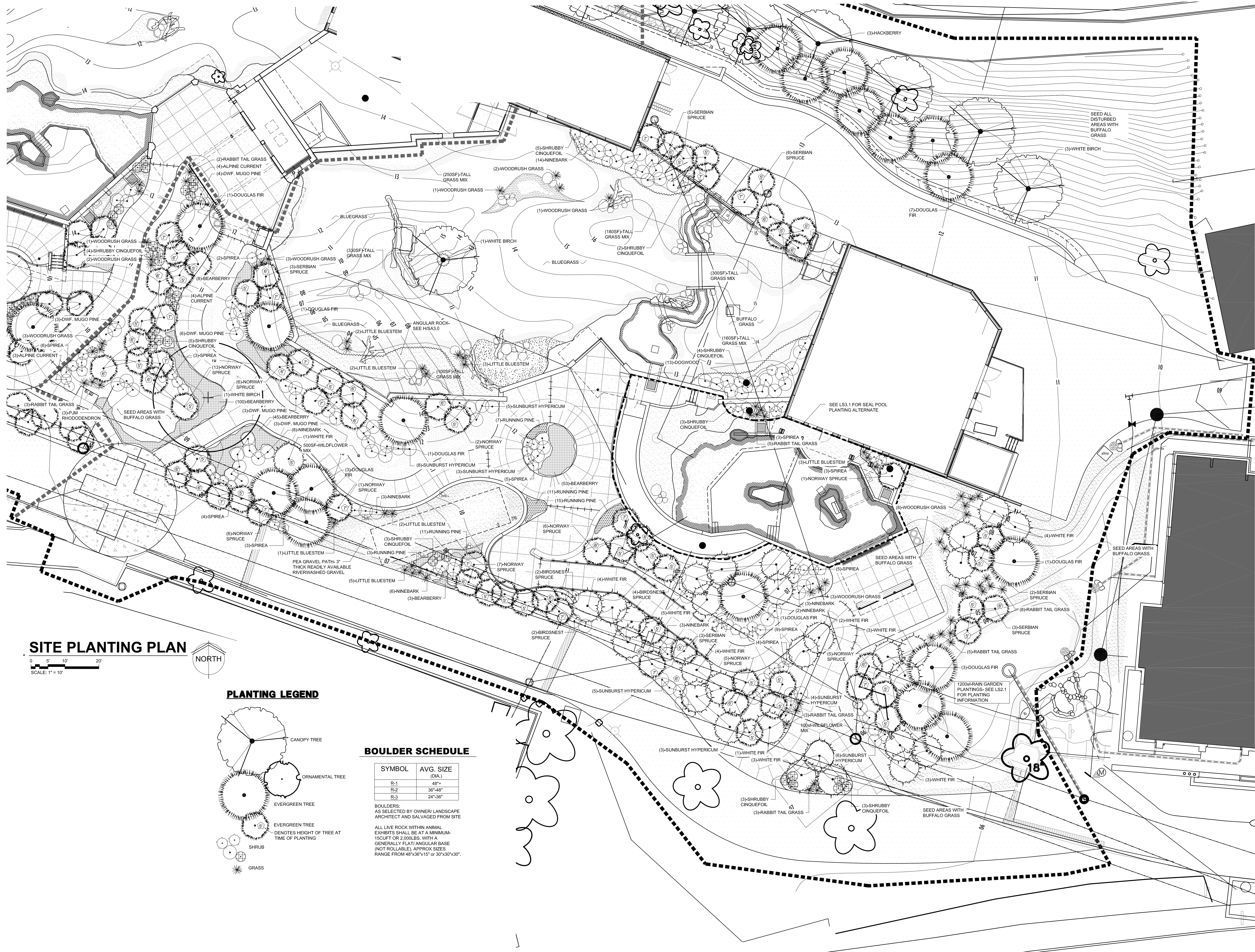
**we do more**  
**henry vilas zoo**

**ARCTIC ANIMAL EXHIBIT AND CONCESSIONS**  
 RFB No. 313086  
 Henry Vilas Zoo - County of Dane  
 Department of Public Works  
 1919 Alliant Energy Center Way  
 Madison, Wisconsin

PRINTS ISSUED  
 07.26.2013 - Schematic Design  
 08.23.2013 - Design Development  
 09.23.2013 - 65% CD's  
 10.07.2013 - Pricing Set  
 10.21.2013 - 95% CD's  
 11.13.2013 - Bid Documents

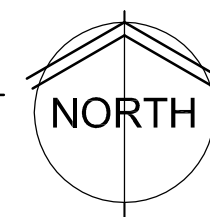
WDM No. 13046  
 drawn: NS  
 checked: SR  
 SITE PLANTING PLAN

**LS1.1**

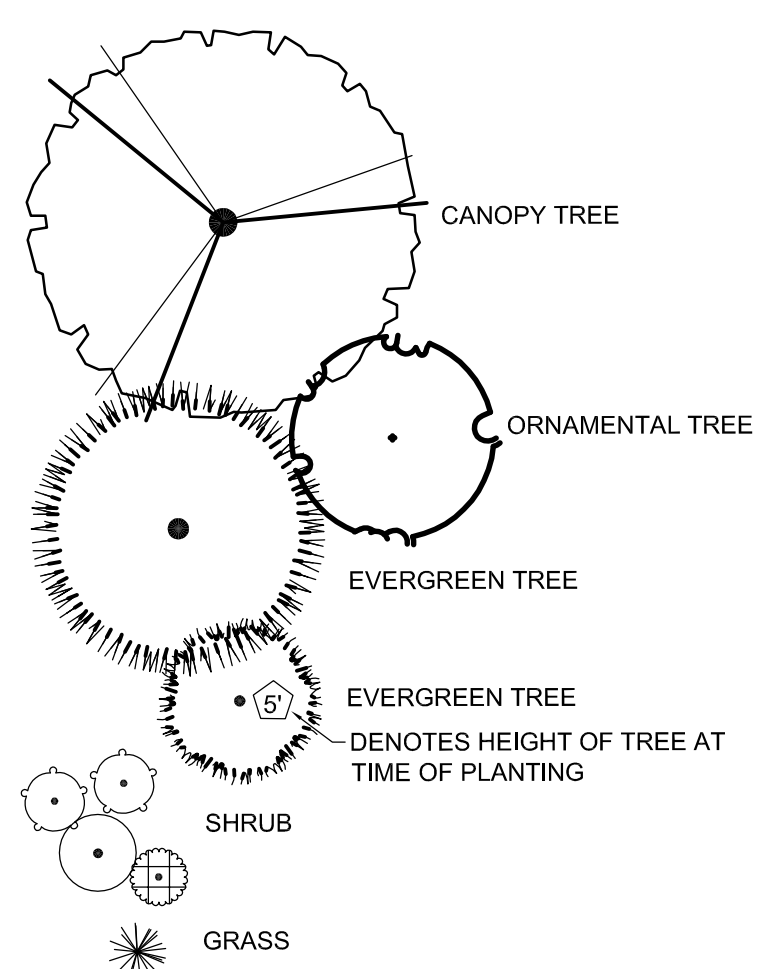


**SITE PLANTING PLAN**

0 5' 10' 20'  
SCALE: 1" = 10'



**PLANTING LEGEND**



**BOULDER SCHEDULE**

SYMBOL	AVG. SIZE (DIA.)
R-1	48"+
R-2	36"-48"
R-3	24"-36"

BOULDERS: AS SELECTED BY OWNER/ LANDSCAPE ARCHITECT AND SALVAGED FROM SITE  
ALL LIVE ROCK WITHIN ANIMAL EXHIBITS SHALL BE AT A MINIMUM- 15CUFT OR 2,000LBS. WITH A GENERALLY FLAT/ ANGULAR BASE (NOT ROLLABLE), APPROX SIZES RANGE FROM 48"x36"x15" or 30"x30"x30".

**wdm**  
ARCHITECTS  
WDM Architects P.A.  
105 North Washington  
Wichita, KS 67202-2815  
T 316.262.4700  
F 316.262.0002  
wdmarchitects.com

we do more  
**henry vilas**  
**ZOO**

**ARCTIC ANIMAL EXHIBIT AND CONCESSIONS**  
RFB No. 313086  
Henry Vilas Zoo - County of Dane  
Department of Public Works  
1919 Alliant Energy Center Way  
Madison, Wisconsin

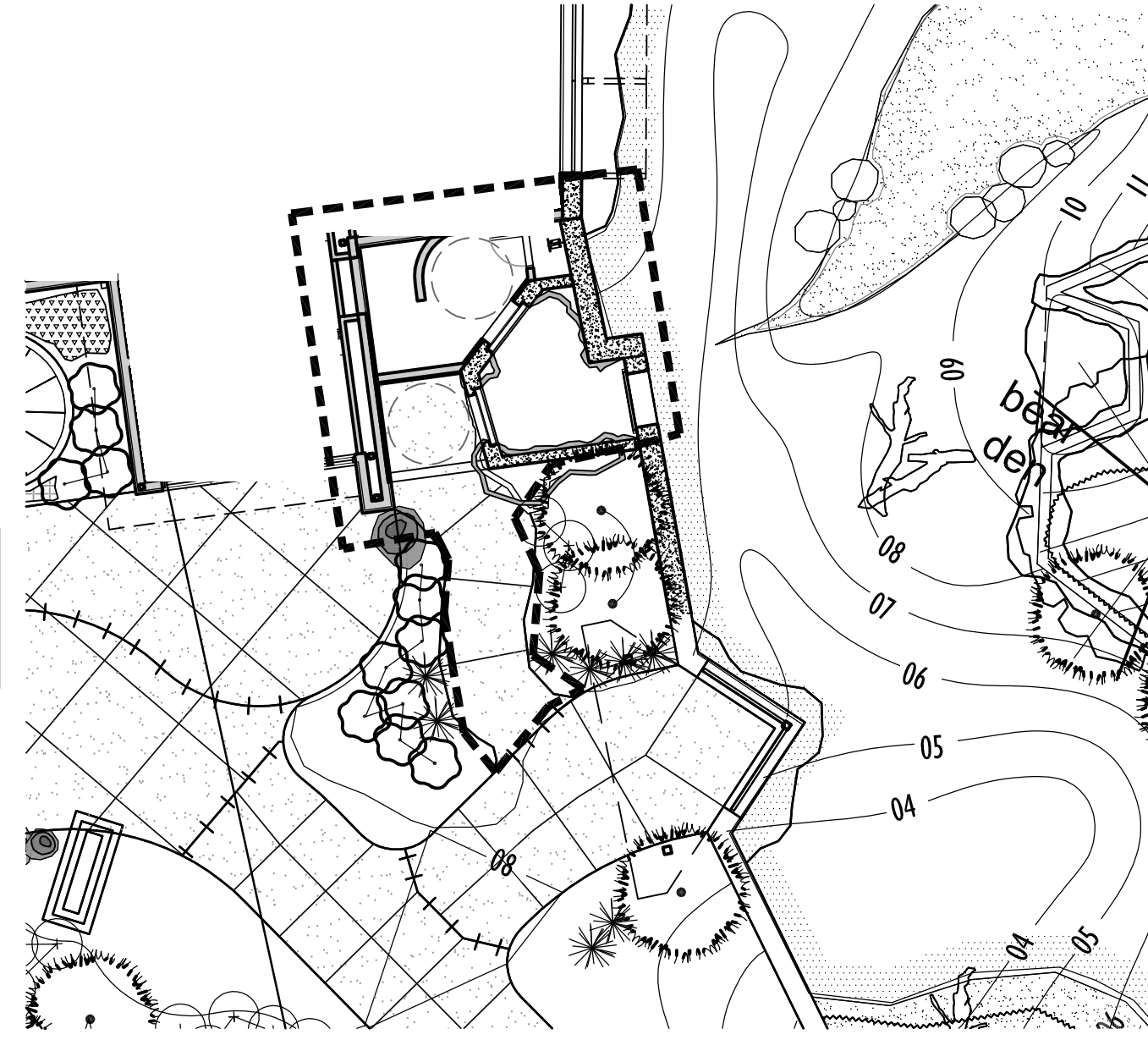
PRINTS ISSUED  
07.26.2013 - Schematic Design  
08.23.2013 - Design Development  
09.23.2013 - 65% CD's  
10.07.2013 - Pricing Set  
10.21.2013 - 95% CD's  
11.13.2013 - Bid Documents

WDM No. 13046 drawn: NS  
checked: SR  
SITE PLANTING PLAN

**LS1.2**

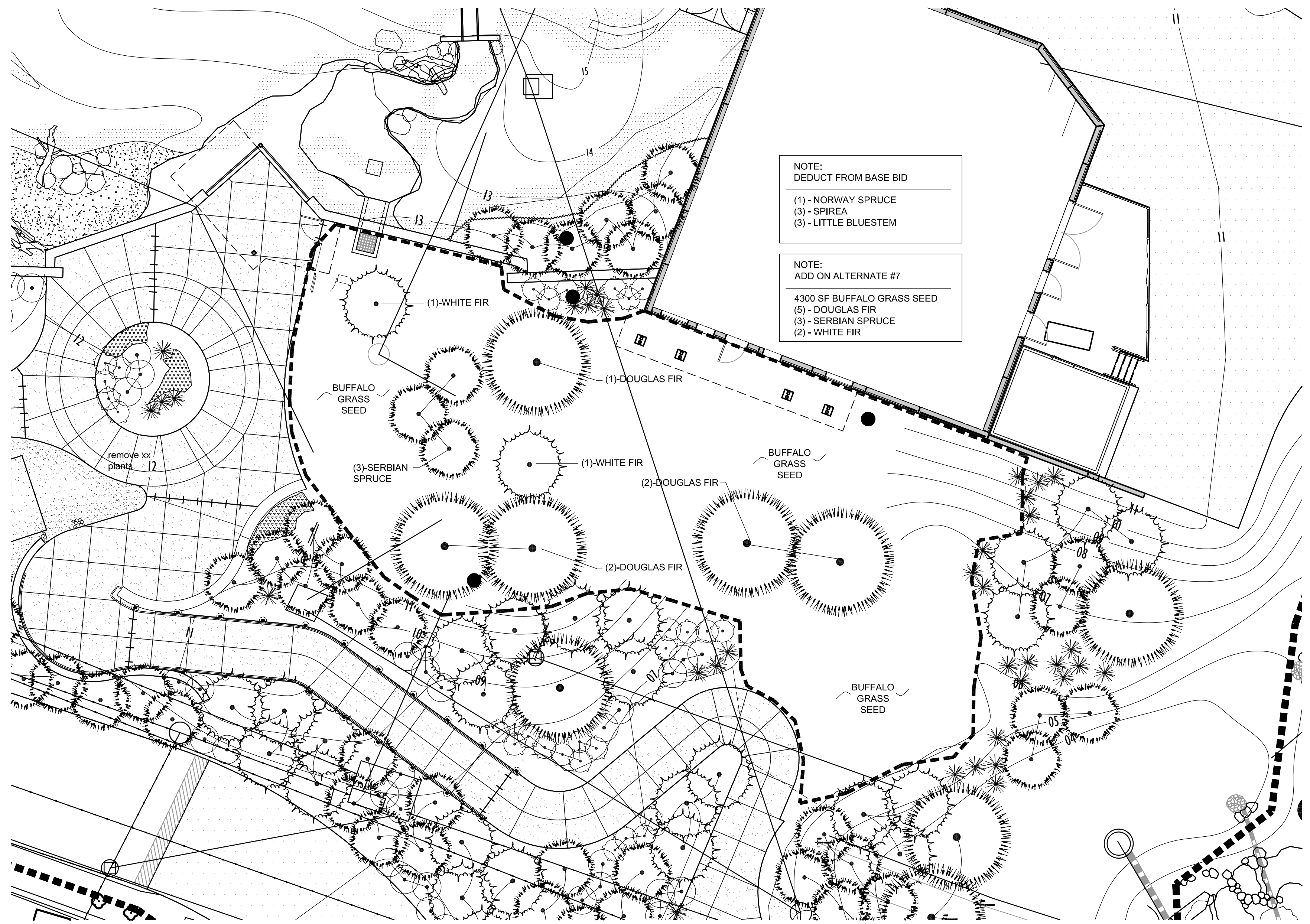
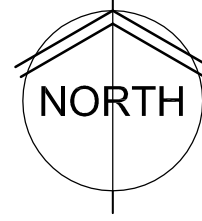


NOTE:  
REMOVE FROM BASE BID  
(3) - NORWAY SPRUCE  
250 SF- WILDFLOWER SEED MIX



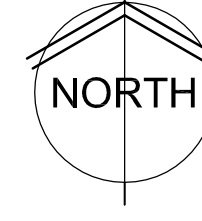
**BEAR DEN - ALT. #6  
SITE PLANTING PLAN**

0 5' 10' 20'  
SCALE: 1" = 10'



**SEAL DEDUCT ALTERNATE #7  
SITE PLANTING PLAN**

0 5' 10' 20'  
SCALE: 1" = 10'



WDM Architects P.A.  
105 North Washington  
Wichita, KS 67202-2815  
T 316.262.4700  
F 316.262.0002  
wdmarchitects.com



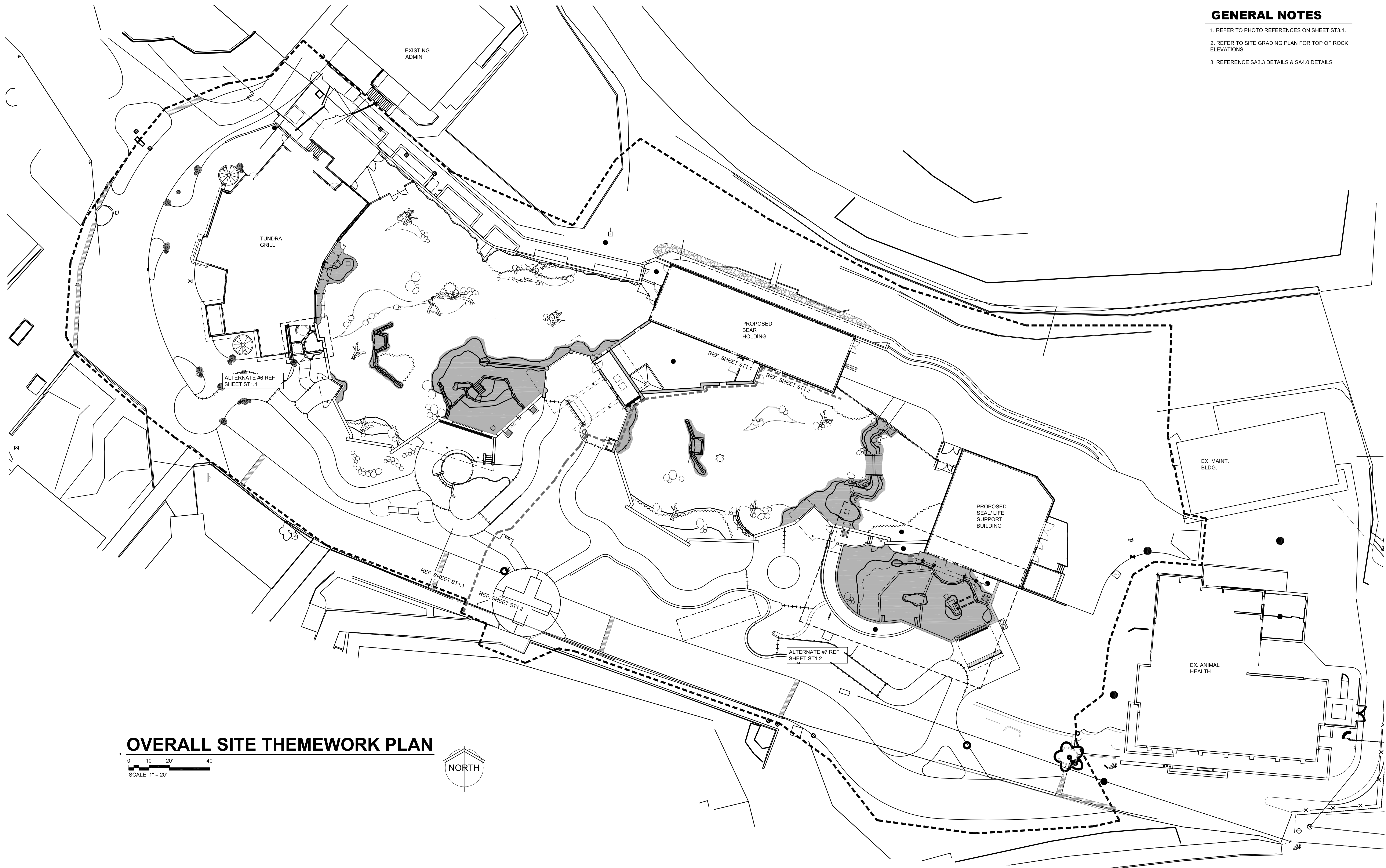
**ARCTIC ANIMAL EXHIBIT AND CONCESSIONS**  
RFB No. 313086  
Henry Vilas Zoo - County of Dane  
Henry Vilas Zoo - Department of Public Works  
702 S Randall Ave | 1919 Alliant Energy Center Way  
Madison, Wisconsin | Madison, Wisconsin

PRINTS ISSUED  
07.26.2013 - Schematic Design  
08.23.2013 - Design Development  
09.23.2013 - 65% CD's  
10.07.2013 - Pricing Set  
10.21.2013 - 95% CD's  
11.13.2013 - Bid Documents

WDM No. 13046 drawn: NS  
checked: SR

ALTERNATES PLANTING PLAN

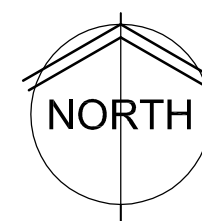
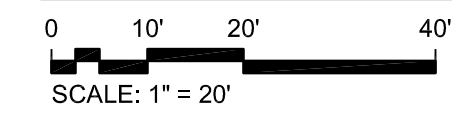
**LS3.1**



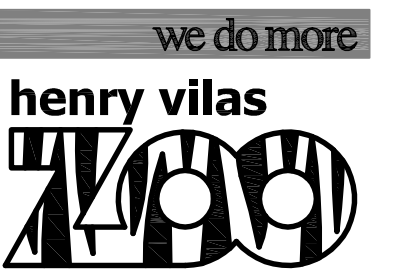
**GENERAL NOTES**

1. REFER TO PHOTO REFERENCES ON SHEET ST3.1.
2. REFER TO SITE GRADING PLAN FOR TOP OF ROCK ELEVATIONS.
3. REFERENCE SA3.3 DETAILS & SA4.0 DETAILS

**OVERALL SITE THEMWORK PLAN**



WDM Architects P.A.  
105 North Washington  
Wichita, KS 67202-2815  
T 316.262.4700  
F 316.262.0002  
wdmarchitects.com



**ARCTIC ANIMAL EXHIBIT AND CONCESSIONS**  
RFB No. 313086  
Henry Vilas Zoo - County of Dane  
Department of Public Works  
Henry Vilas Zoo  
702 S Randall Ave  
Madison, Wisconsin

PRINTS ISSUED  
07.26.2013 - Schematic Design  
08.23.2013 - Design Development  
09.23.2013 - 65% CD's  
10.07.2013 - Pricing Set  
10.21.2013 - 95% CD's  
11.13.2013 - Bid Documents

WDM No. 13046  
drawn: NS  
checked: SR

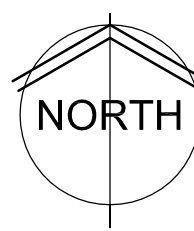
SITE THEMWORK PLAN

**ST1.0**



**SITE THEMEWORK PLAN**

0 5' 10' 20'  
SCALE: 1" = 10'



**THEMEWORK LEGEND**

- POOL EDGING
- THEMEWORK ISLANDS IN POOLS/ CRAWL TUNNEL
- LOW PROFILE THEMEWORK AT BACK WALL
- DEEP REVEAL THEMEWORK AT BACK WALL (SINGLE FORMATION ONLY)
- POLAR BEAR POOL ENTRY/ PAVING AT GLASS
- THEMING SIMILAR TO SEAL POOL - PRIMARILY NOT THEMED EXCEPT EDGES THEMED AS SHOWN, TO 8"-16" BELOW WATER LEVEL. POOL FLOOR THEMED ONLY AT #4-POLAR BEAR POOL ENTRY-SEE BELOW, AND ROCK IN MIDDLE OF BEAR POOL-THEMED DOWN TO FLOOR

REFERENCE THEMEWORK IMAGES ON SHEET ST3.0 FOR GENERAL DESIGN INTENT.



WDM Architects P.A.  
105 North Washington  
Wichita, KS 67202-2815  
T 316.262.4700  
F 316.262.0002  
wdmarchitects.com

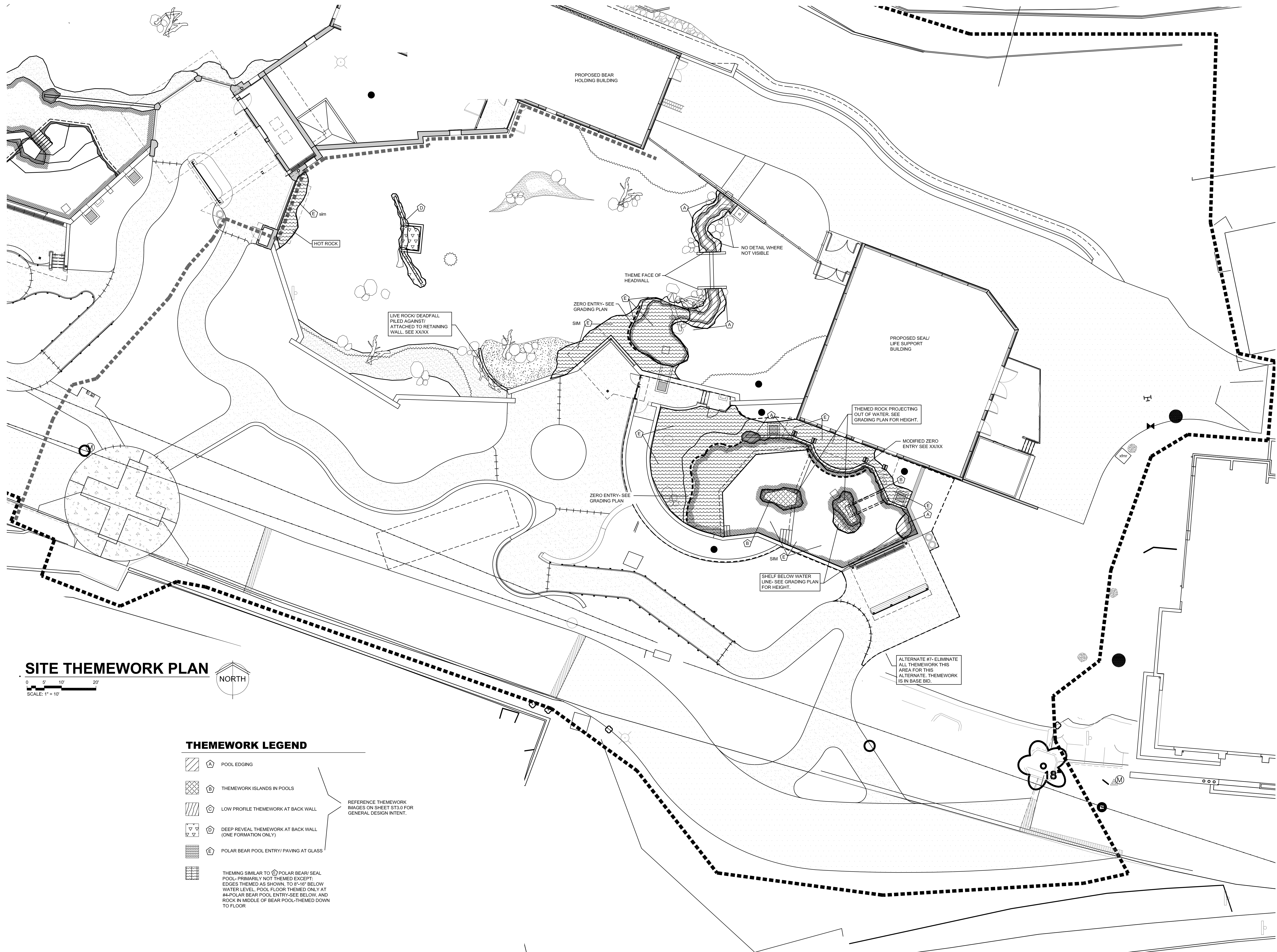


**ARCTIC ANIMAL EXHIBIT AND CONCESSIONS**  
RFB No. 313086  
Henry Vilas Zoo - County of Dane  
Henry Vilas Zoo  
702 S Randall Ave  
Madison, Wisconsin

PRINTS ISSUED  
07.26.2013 - Schematic Design  
08.23.2013 - Design Development  
09.23.2013 - 65% CD's  
10.07.2013 - Pricing Set  
10.21.2013 - 95% CD's  
11.13.2013 - Bid Documents

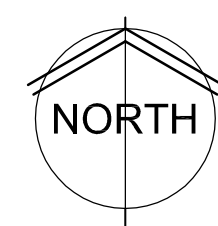
WDM No. 13046  
drawn: NS  
checked: SR  
SITE THEMEWORK PLAN

**ST1.1**

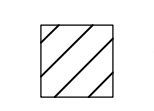

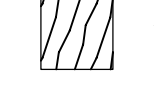
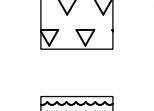
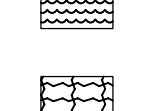
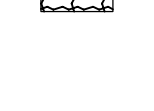


**SITE THEMWORK PLAN**

0 5' 10' 20'  
SCALE: 1" = 10'



**THEMWORK LEGEND**

-  POOL EDGING
-  THEMWORK ISLANDS IN POOLS
-  LOW PROFILE THEMWORK AT BACK WALL
-  DEEP REVEAL THEMWORK AT BACK WALL (ONE FORMATION ONLY)
-  POLAR BEAR POOL ENTRY/ PAVING AT GLASS
-  THEMING SIMILAR TO POLAR BEAR/ SEAL POOL- PRIMARILY NOT THEMED EXCEPT: EDGES THEMED AS SHOWN, TO 8"-10" BELOW WATER LEVEL, POOL FLOOR THEMED ONLY AT #4-POLAR BEAR POOL ENTRY-SEE BELOW, AND ROCK IN MIDDLE OF BEAR POOL-THEMED DOWN TO FLOOR.

REFERENCE THEMWORK IMAGES ON SHEET ST3.0 FOR GENERAL DESIGN INTENT.

**wdm**  
ARCHITECTS  
WDM Architects P.A.  
105 North Washington  
Wichita, KS 67202-2815  
T 316.262.4700  
F 316.262.0002  
wdmarchitects.com

we do more  
**henry vilas**  
**MOO**

**ARCTIC ANIMAL EXHIBIT AND CONCESSIONS**  
RFB No. 313086  
Henry Vilas Zoo - County of Dane  
Henry Vilas Zoo  
702 S Randall Ave  
Madison, Wisconsin  
Department of Public Works  
1919 Alliant Energy Center Way  
Madison, Wisconsin

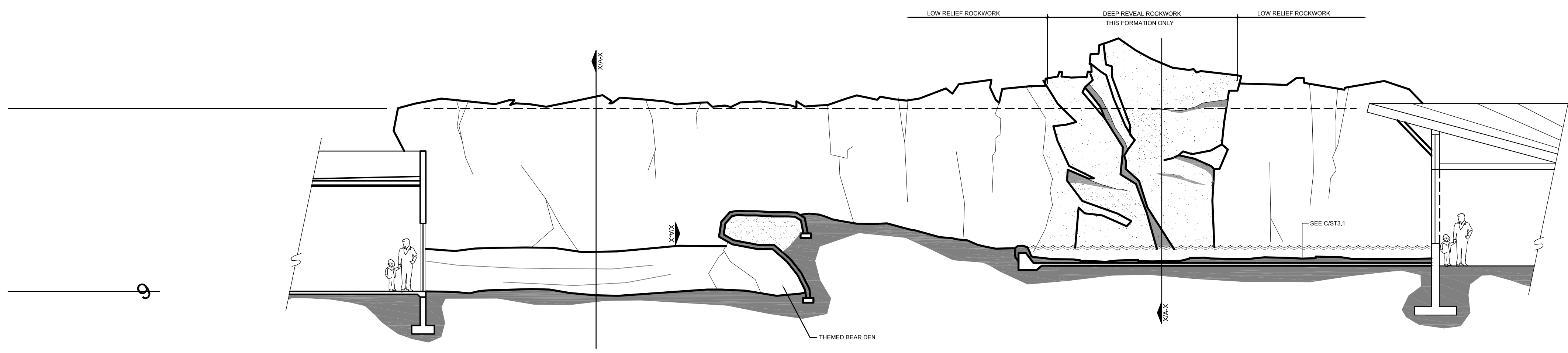
PRINTS ISSUED  
07.26.2013 - Schematic Design  
08.23.2013 - Design Development  
09.23.2013 - 65% CD's  
10.07.2013 - Pricing Set  
10.21.2013 - 95% CD's  
11.13.2013 - Bid Documents

WDM No. 13046 drawn: NS  
checked: SR

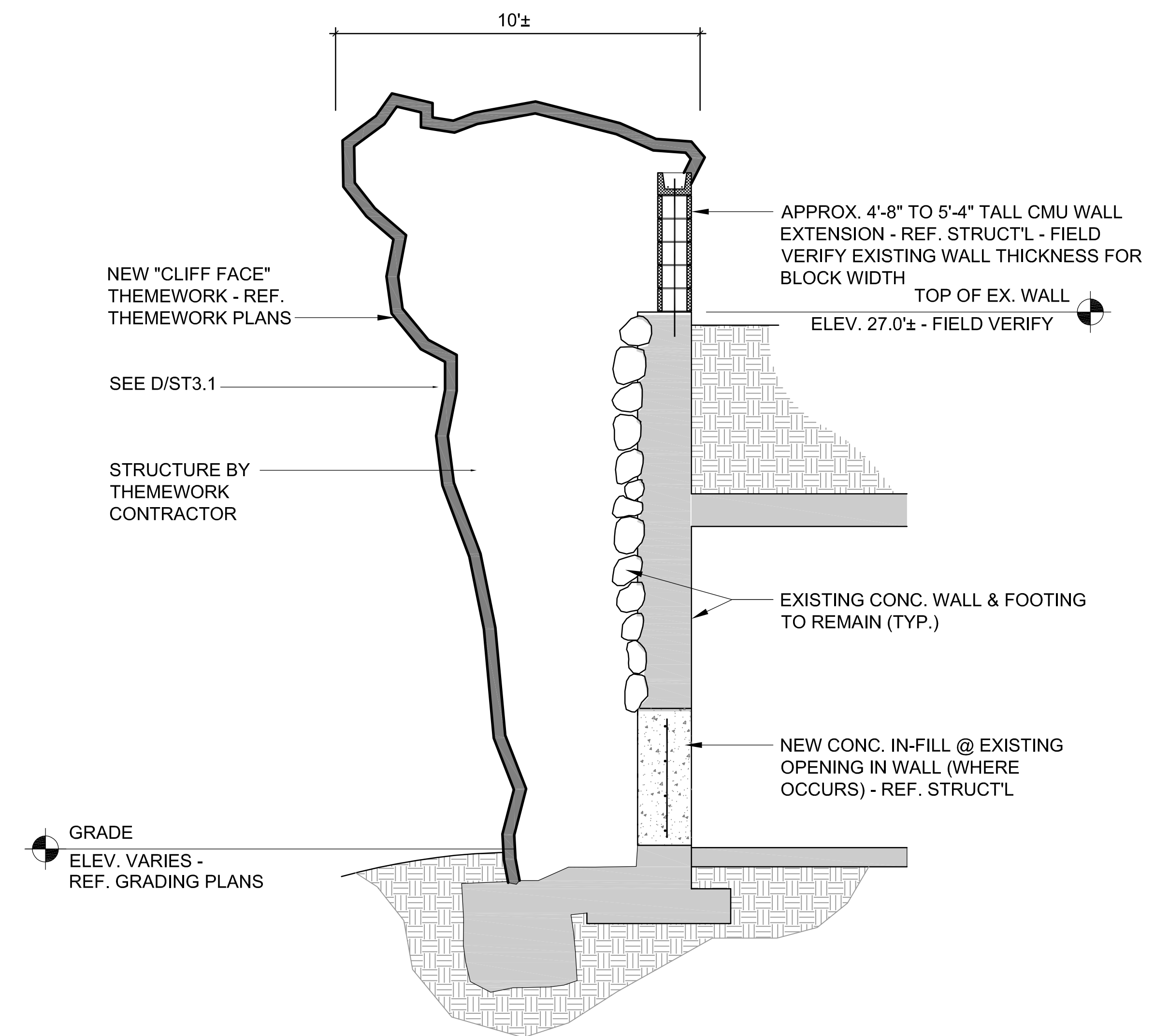
SITE THEMWORK PLAN

**ST1.2**

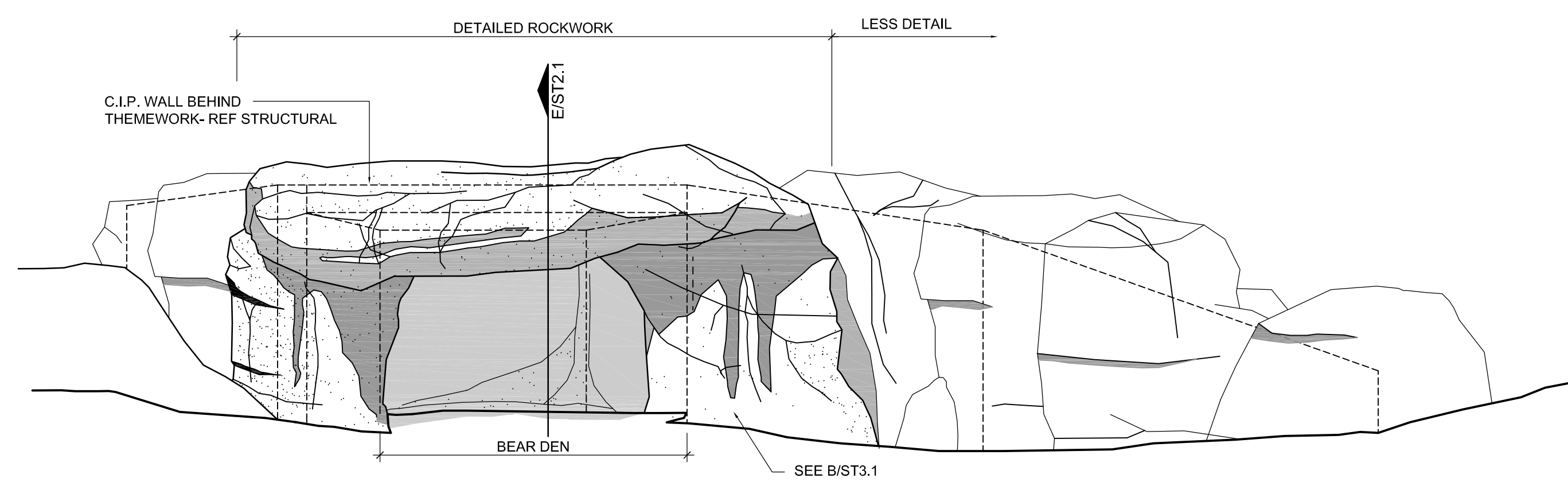




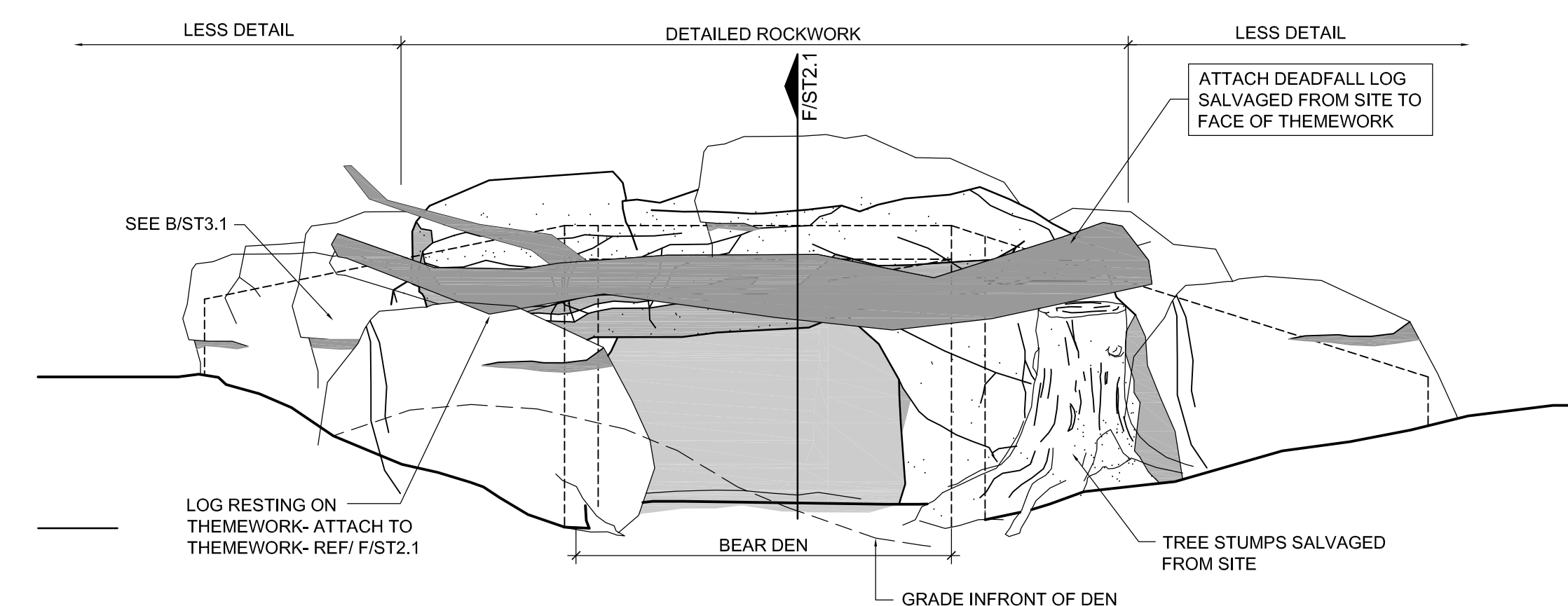
**A BACK CONTAINMENT WALL THEMWORK ELEVATION**  
SCALE: 1/8" = 1'-0"



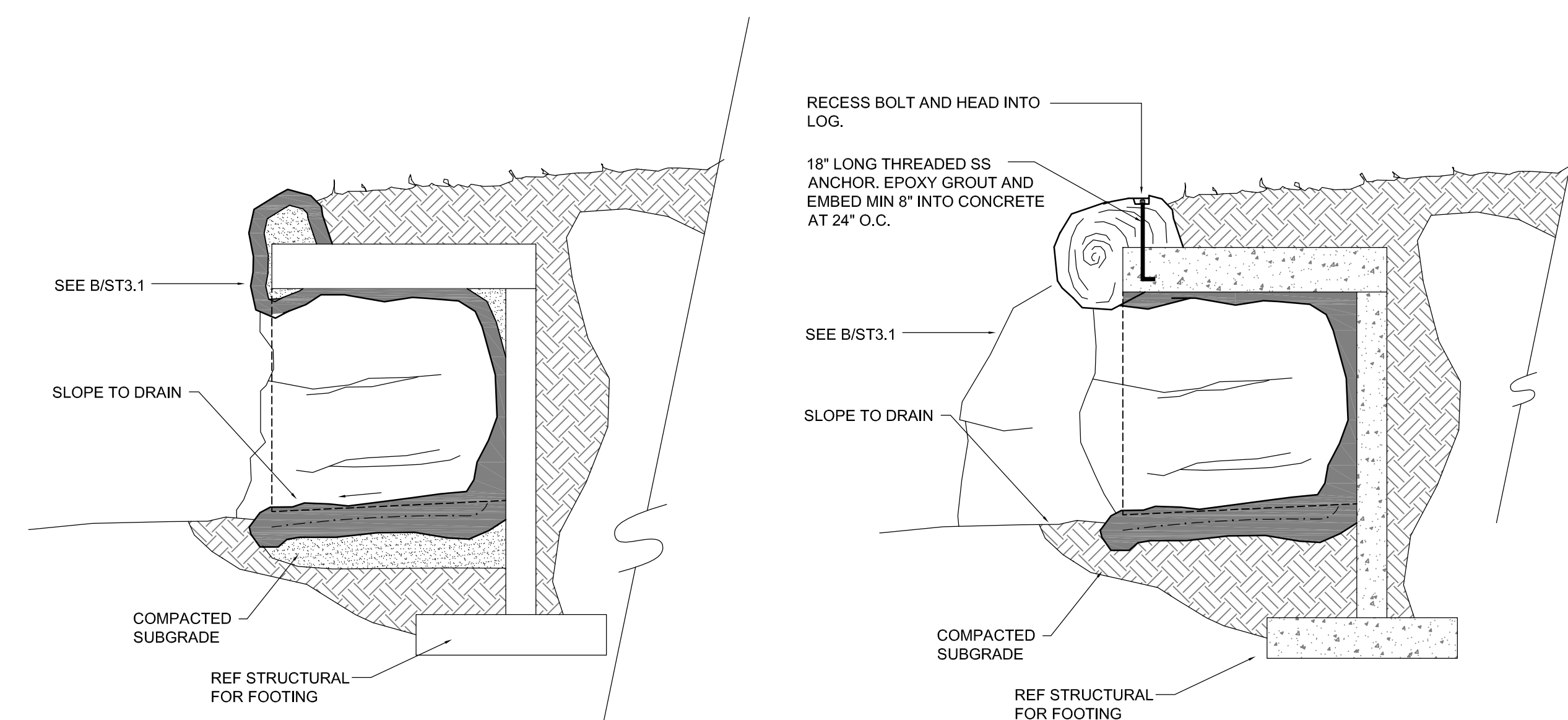
**B SECTION THRU THEMWORK**  
SCALE: 3/8" = 1'-0"



**C BEAR DEN 1**  
SCALE: 3/8" = 1'-0"

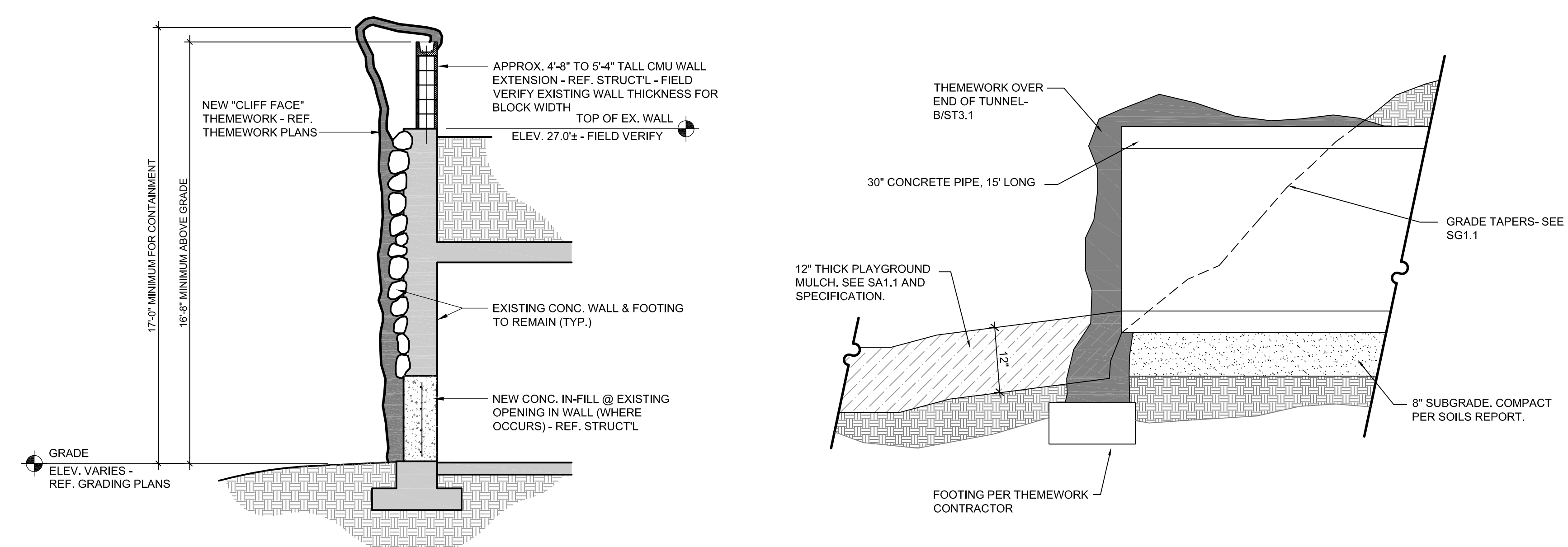


**D BEAR DEN 2**  
SCALE: 3/8" = 1'-0"



**E SECTION BEAR DEN 1**  
SCALE: 3/8" = 1'-0"

**F SECTION BEAR DEN 2**  
SCALE: 3/8" = 1'-0"



**G SECTION THRU EXISTING WALL**  
NTS

**H CRAWL TUNNEL**  
SCALE: 3/4" = 1'-0"

**wdm**  
ARCHITECTS  
WDM Architects P.A.  
105 North Washington  
Wichita, KS 67202-2815  
T 316.262.4700  
F 316.262.0002  
wdmarchitects.com

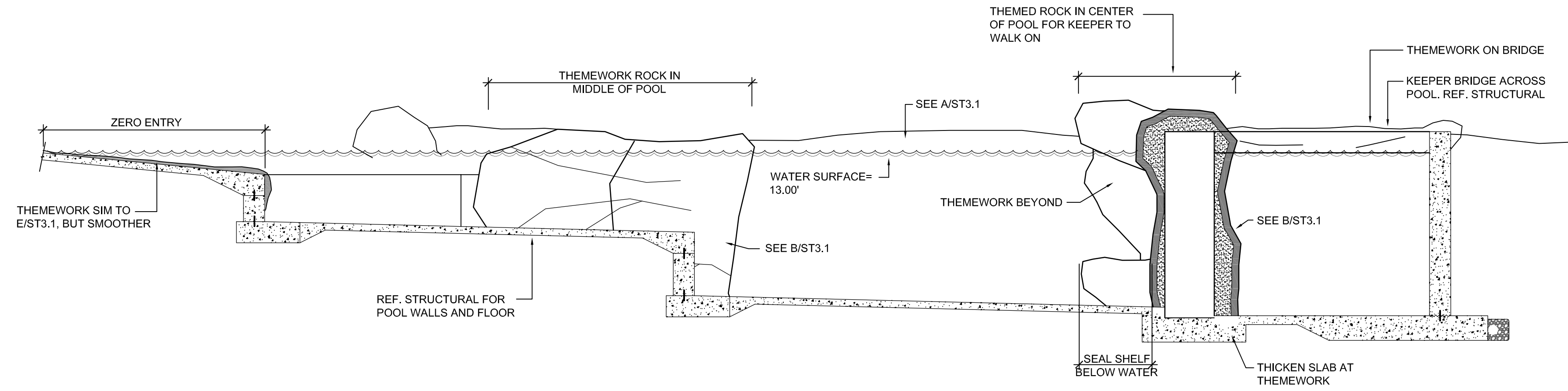
we do more  
**henry vilas**  
ZOO

**ARCTIC ANIMAL EXHIBIT AND CONCESSIONS**  
RFB No. 313086  
Henry Vilas Zoo - County of Dane  
Henry Vilas Zoo - Department of Public Works  
702 S Randall Ave  
1919 Alliant Energy Center Way  
Madison, Wisconsin

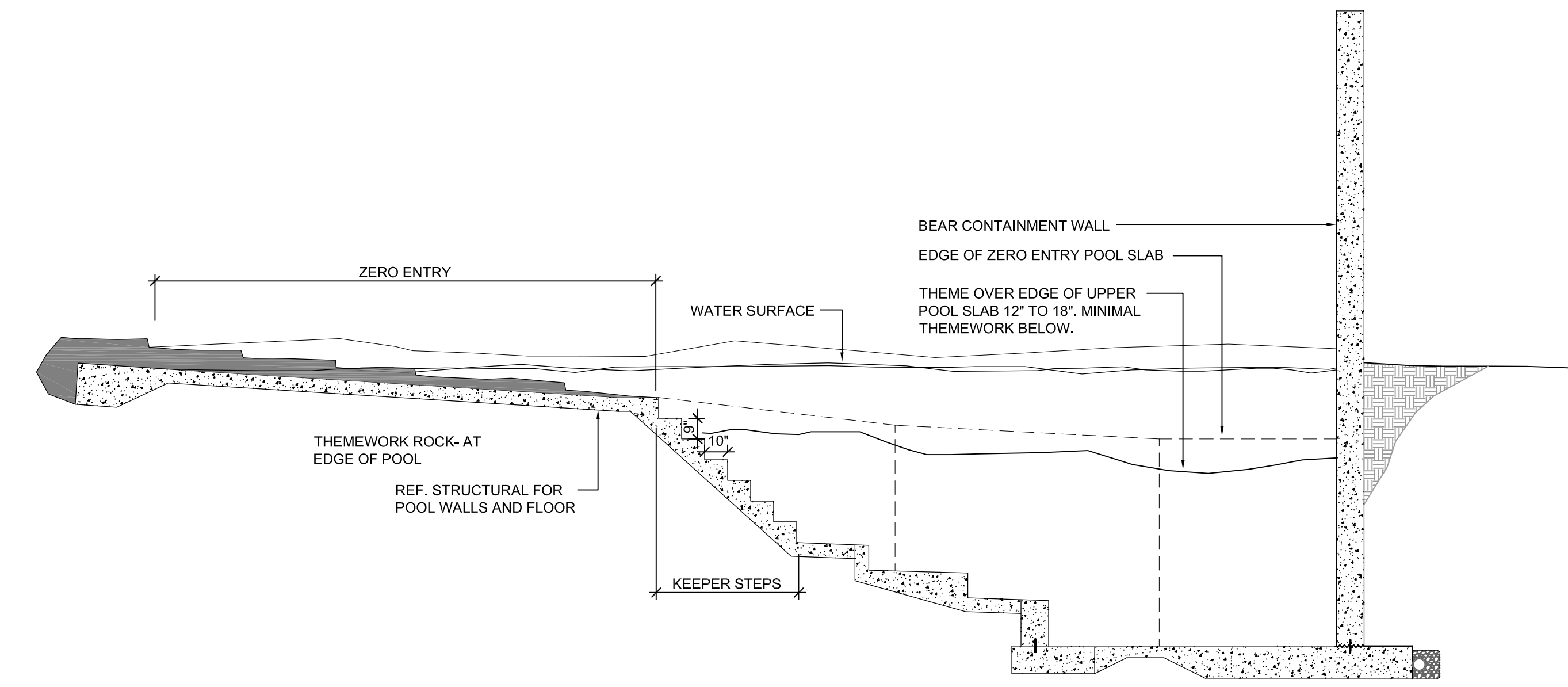
PRINTS ISSUED  
07.26.2013 - Schematic Design  
08.23.2013 - Design Development  
09.23.2013 - 65% CD's  
10.07.2013 - Pricing Set  
10.21.2013 - 95% CD's  
11.13.2013 - Bid Documents

WDM No. 13046  
drawn: NS  
checked: SR  
THEMWORK ELEVATIONS

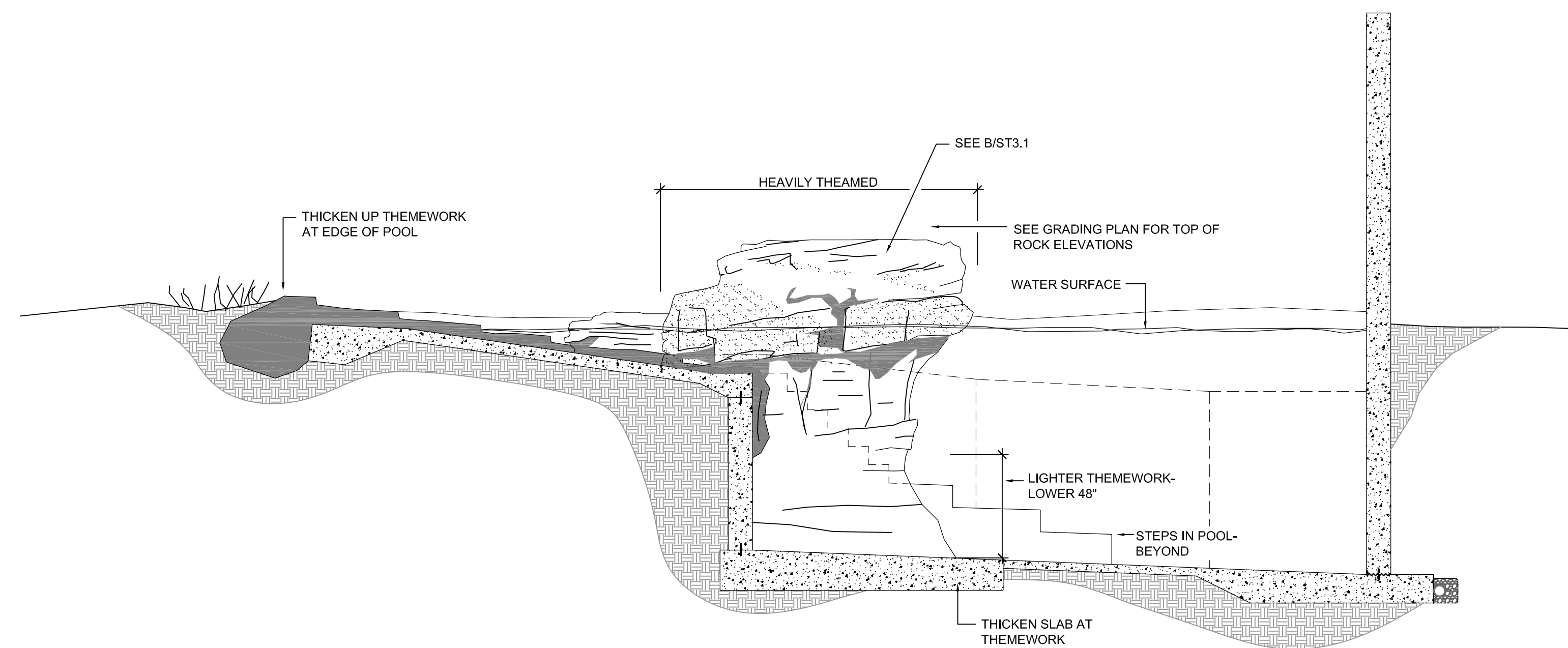
**ST2.1**



**A SEAL POOL SECTION**  
SCALE: 1/4" = 1'-0"



**B POLAR BEAR POOL SECTION**  
SCALE: 1/4" = 1'-0"



**C POLAR BEAR POOL SECTION**  
SCALE: 1/4" = 1'-0"



WDM Architects P.A.  
105 North Washington  
Wichita, KS 67202-2815  
T 316.262.4700  
F 316.262.0002  
wdmarchitects.com



**ARCTIC ANIMAL EXHIBIT AND CONCESSIONS**  
RFB No. 313086  
Henry Vilas Zoo - County of Dane  
Henry Vilas Zoo - Department of Public Works  
702 S Randall Ave 1919 Alliant Energy Center Way  
Madison, Wisconsin Madison, Wisconsin

PRINTS ISSUED  
07.26.2013 - Schematic Design  
08.23.2013 - Design Development  
09.23.2013 - 65% CD's  
10.07.2013 - Pricing Set  
10.21.2013 - 95% CD's  
11.13.2013 - Bid Documents

WDM No. 13046 drawn: NS  
checked: SR

THEMEWORK ELEVATIONS

**ST2.2**



Photo Courtesy: www.istockphoto.com

**Themework**

Pool Edging

**A**



Similar Shape, smoother edges

Photo Courtesy: www.istockphoto.com

**Themework**

Islands in Pools and Cave Dens

**B**



Minimal theming on back wall

**Themework**

Minimal Themework on Back Wall

**C**



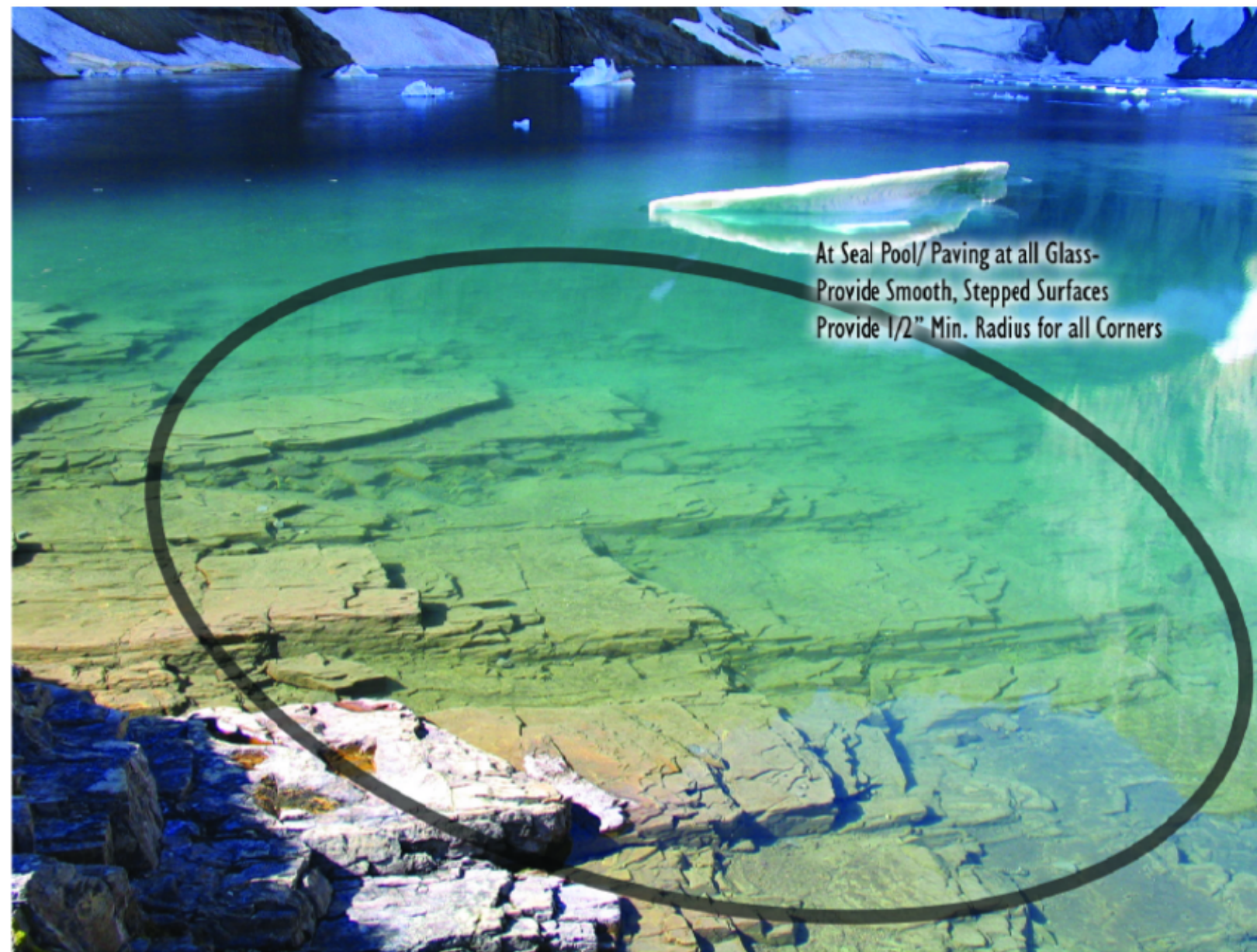
More intense themework at outcropping on back wall

Photo Courtesy: www.istockphoto.com

**Themework**

Themework at Back Wall

**D**



At Seal Pool/Paving at all Glass -  
Provide Smooth, Stepped Surfaces  
Provide 1/2" Min. Radius for all Corners

Photo Courtesy: www.istockphoto.com

**Themework**

Pool Entries/ Paving at Viewing Glass

**E**



WDM Architects P.A.  
105 North Washington  
Wichita, KS 67202-2815  
T 316.262.4700  
F 316.262.0002  
wdmarchitects.com



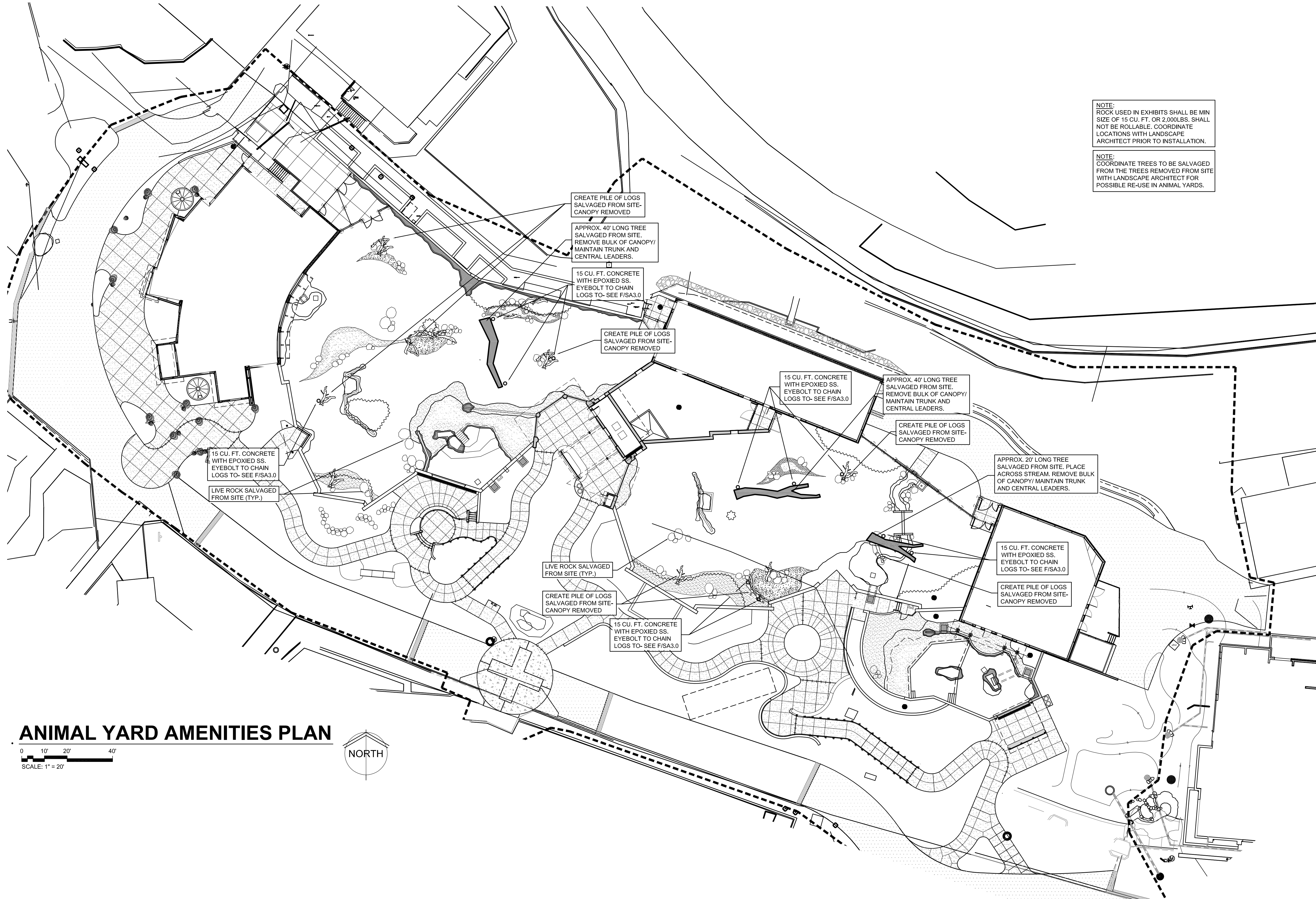
**ARCTIC ANIMAL EXHIBIT AND CONCESSIONS**  
RFB No. 313086  
Henry Vilas Zoo - County of Dane  
Henry Vilas Zoo - Department of Public Works  
702 S Randall Ave 1919 Alliant Energy Center Way  
Madison, Wisconsin Madison, Wisconsin

PRINTS ISSUED  
07.26.2013 - Schematic Design  
08.23.2013 - Design Development  
09.23.2013 - 65% CD's  
10.07.2013 - Pricing Set  
10.21.2013 - 95% CD's  
11.13.2013 - Bid Documents

WDM No. 13046 drawn: NS  
checked: SR

THEMEWORK IMAGES

**ST3.1**



NOTE:  
ROCK USED IN EXHIBITS SHALL BE MIN SIZE OF 15 CU. FT. OR 2,000LBS. SHALL NOT BE ROLLABLE. COORDINATE LOCATIONS WITH LANDSCAPE ARCHITECT PRIOR TO INSTALLATION.

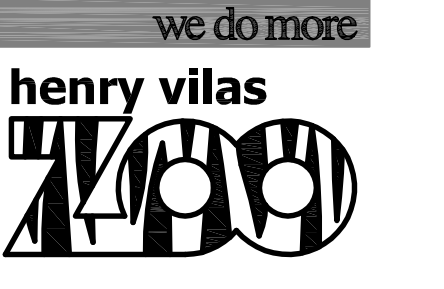
NOTE:  
COORDINATE TREES TO BE SALVAGED FROM THE TREES REMOVED FROM SITE WITH LANDSCAPE ARCHITECT FOR POSSIBLE RE-USE IN ANIMAL YARDS.

**ANIMAL YARD AMENITIES PLAN**

0 10' 20' 40'  
SCALE: 1" = 20'



WDM Architects P.A.  
105 North Washington  
Wichita, KS 67202-2815  
T 316.262.4700  
F 316.262.0002  
wdmarchitects.com



**ARCTIC ANIMAL EXHIBIT AND CONCESSIONS**  
RFB No. 313086  
Henry Vilas Zoo - County of Dane  
Henry Vilas Zoo - Department of Public Works  
702 S Randall Ave 1919 Alliant Energy Center Way  
Madison, Wisconsin Madison, Wisconsin

PRINTS ISSUED  
07.26.2013 - Schematic Design  
08.23.2013 - Design Development  
09.23.2013 - 65% CD's  
10.07.2013 - Pricing Set  
10.21.2013 - 95% CD's  
11.13.2013 - Bid Documents

WDM No. 13046 drawn: NS  
checked: SR  
YARD AMENITIES PLAN

**YA1.0**