

PLAN VIEW

SCALE: 1/8" = 1'-0"



MARTIN LUTHER
KING JR BLVD

GENERAL NOTES:

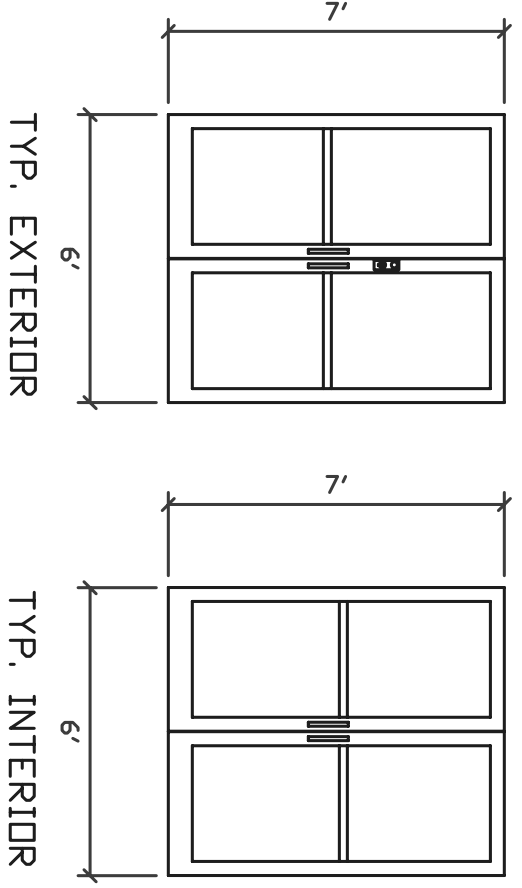
- ① REPAIR STAINLESS STEEL FRAME BY WELDING WHERE SEAM HAS SEPARATED. IF WELDING IS NOT POSSIBLE, COORDINATE ALTERNATIVE SOLUTION WITH OWNER.
- ② OWNER TO PROVIDE LABOR FOR DEMOLITION OF PARTITION WALLS.

DANE COUNTY WISCONSIN
DEPARTMENT OF PUBLIC WORKS



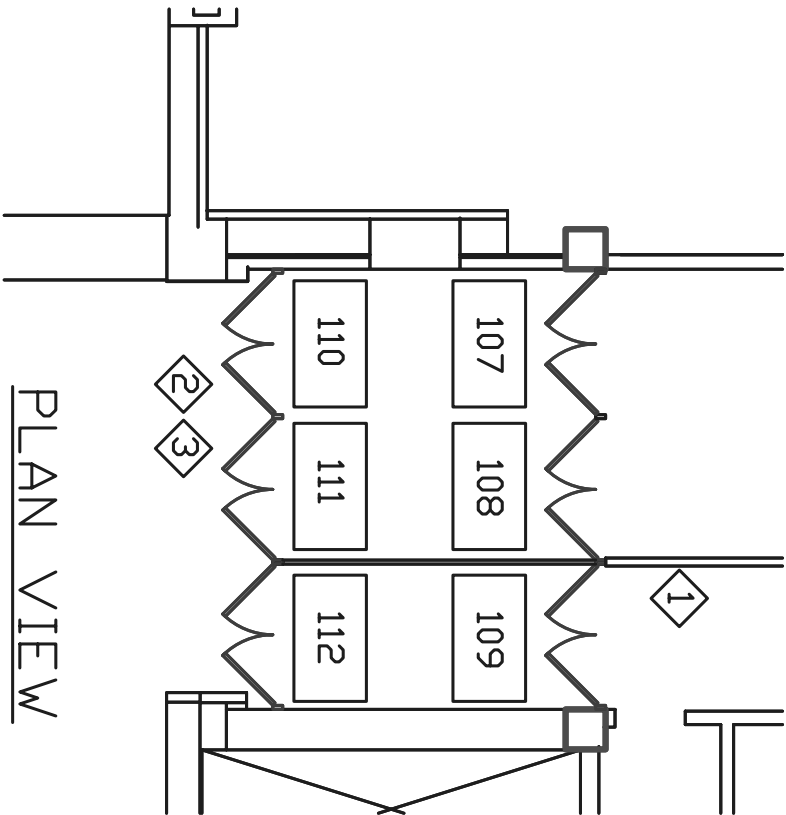
DOOR UPGRADE
CITY-COUNTY BLDG.
210 M.L.KING JR. BLVD.

DESIGN BY: SCR	BID NO.: 309028	DRAWING NO.:
DRAWN BY: JRL		
APPROVED BY: RJM	DATE: 10-11-2010	1 / 3



DOOR ELEVATIONS

SCALE: 1/4" = 1'-0"



PLAN VIEW

SCALE: 1/8" = 1'-0"

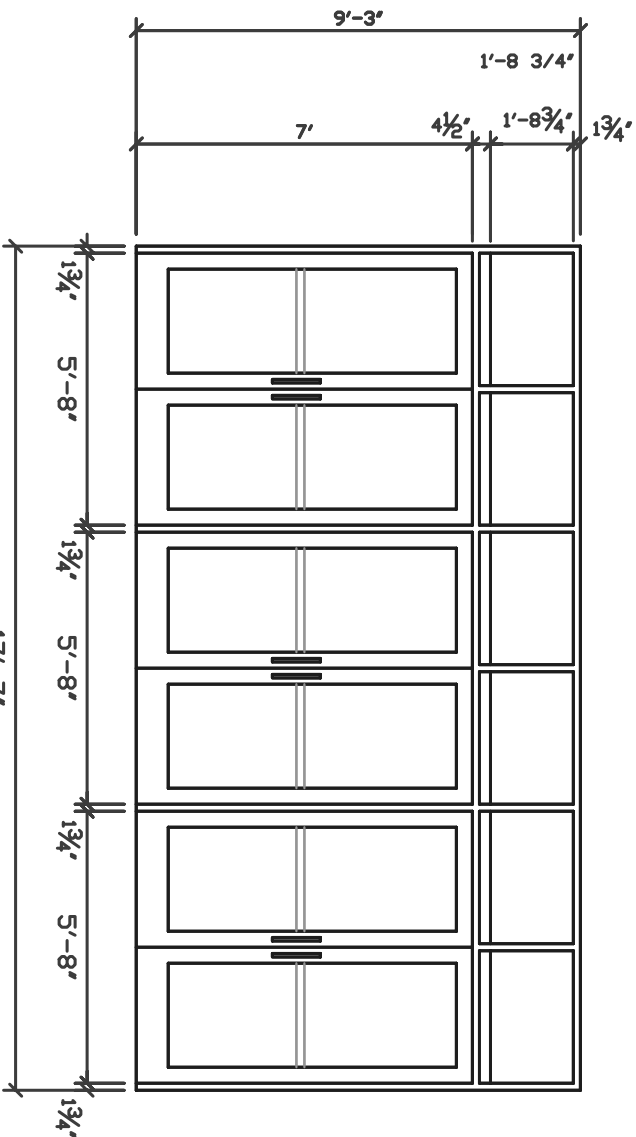
WILSON ST.

PLAN NORTH




GENERAL NOTES:

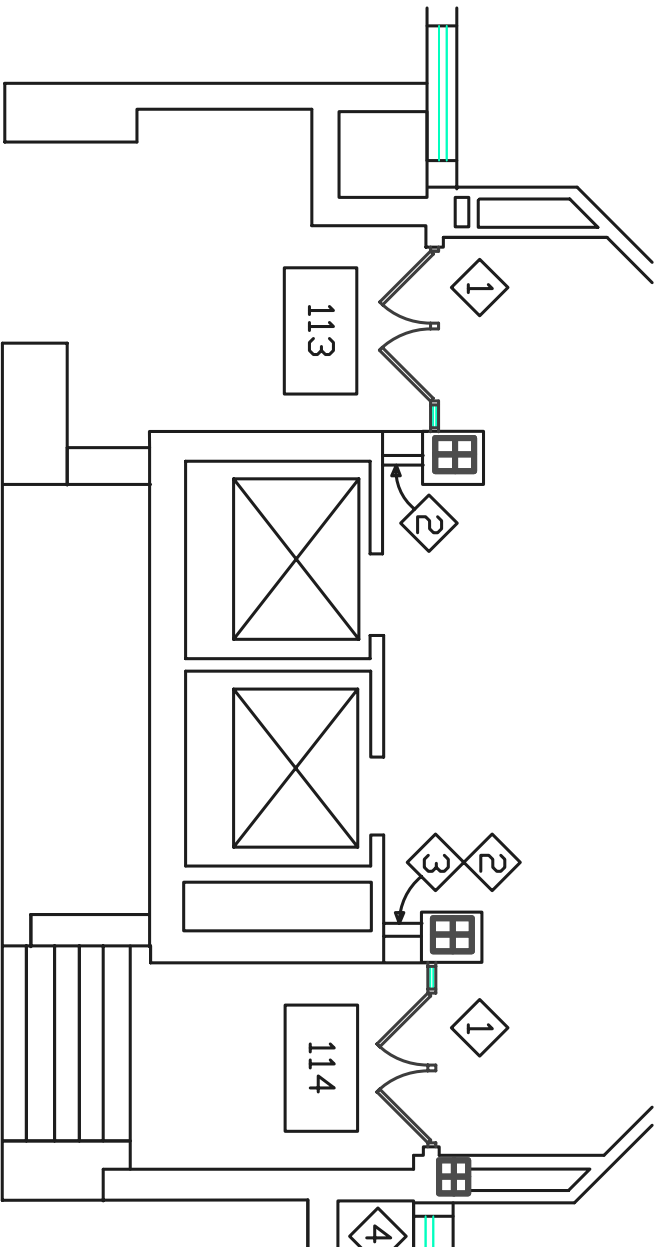
- 1 OWNER TO PROVIDE LABOR FOR DEMOLITION OF PARTITION WALLS
- 2 BASE BID: REMOVE EXISTING DOOR FRAMES AND INSTALL NEW STAINLESS STEEL FRAMES. FRAMES SHALL BE PLUMB, LEVEL AND SQUARE. EXISTING DOORS TO BE REINSTALLED PLUMB AND LEVEL WITHIN 1/8" IN 6".
- 3 ALTERNATE BID: REMOVE STAINLESS STEEL DOORS AND FRAMES. INSTALL NEW ALUMINUM FRAMES AND WIDE STYLE DOORS WITH 1" INSULATED GLASS.
- PROVIDE ALL NEW DOOR HARDWARE.
- CONTRACTOR SHALL MAINTAIN STRUCTURAL INTEGRITY DURING INSTALLATION.



DOOR ELEVATION

SCALE: 1/4" = 1'-0"

DANE COUNTY WISCONSIN DEPARTMENT OF PUBLIC WORKS 	
DOOR UPGRADE CITY-COUNTY BLDG. 210 M.L.KING JR. BLVD.	
DESIGN BY: SCR DRAWN BY: JRL APPROVED BY: RAN	BID NO.: 309028 DATE: 10-11-2010
DRAWING NO.: 2 / 3	



GENERAL NOTES:

- 1 DEMOLISH EXISTING ALUMINUM DOORS & FRAMES. REPLACE WITH NEW ALUMINUM WIDE STYLE ENTRANCES-SEE BELOW
 - 2 REPLACE CAULK AROUND WINDOW
 - 3 REPAIR OR REPLACE ALUM. SILL CAP
 - 4 REPAIR ALUM. SILL BY SECURING LOOSE FLASHING AND PROVIDING SLICE CAP AND END CAP
- CONTRACTOR SHALL MAINTAIN STRUCTURAL INTEGRITY DURING INSTALLATION.

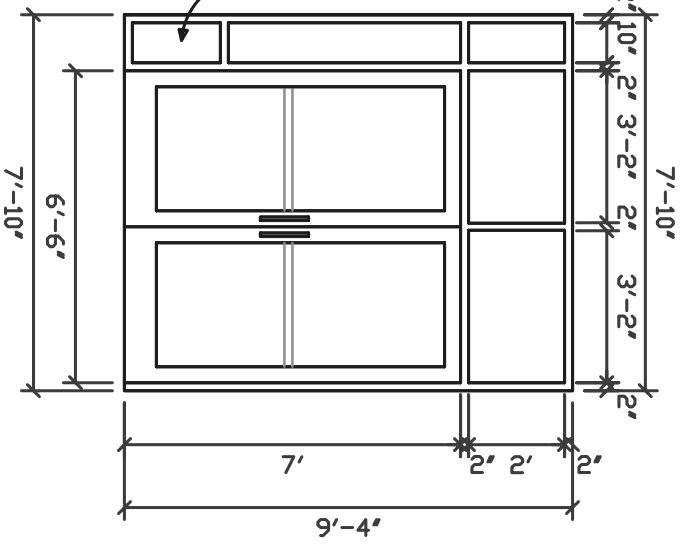
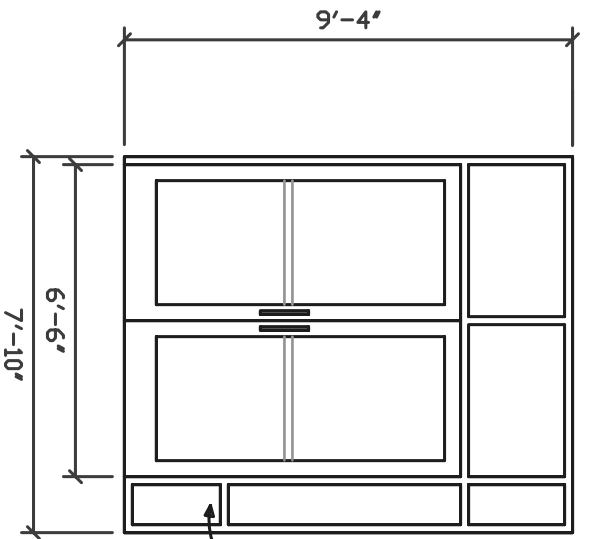


PLAN NORTH

PLAN VIEW

SCALE: 1/8" = 1'-0"

S. CARROLL ST.



PANEL

DOOR ELEVATIONS

SCALE: 1/4" = 1'-0"



DANE COUNTY WISCONSIN
DEPARTMENT OF PUBLIC WORKS

DOOR UPGRADE

CITY-COUNTY BLDG.
210 M.L.KING JR. BLVD.

DESIGN BY: SCR	BID NO.: 309028	DRAWING NO.: 3 / 3
DRAWN BY: JRL		
APPROVED BY: RAN	DATE: 10-11-2010	

Door Schedule

Door ID	Door Material		Frame Material		Opening Size		Glass	Hinge	Closer	Exit Device	Pull Handle	Remarks
	Existing	Proposed	Existing	Proposed	Width	Height						
101	SS	E.T.R.	SS	E.T.R.	6'-0"	7'-0"	-		C			1
102	SS	E.T.R.	SS	E.T.R.	6'-0"	7'-0"	-					1
103	SS	E.T.R.	SS	E.T.R.	6'-0"	7'-0"	-	H	C			1
104	SS	E.T.R.	SS	E.T.R.	6'-0"	7'-0"	-			ED	P	1,3
105	SS	E.T.R.	SS	E.T.R.	6'-0"	7'-0"	-			ED		1,2
106	SS	E.T.R.	SS	E.T.R.	6'-0"	7'-0"	-	H		ED	P	1,3
107	SS	E.T.R.	SS	E.T.R.	5'-8"	7'-0"	-	H				5
108	SS	E.T.R.	SS	E.T.R.	5'-8"	7'-0"	-	H	C			5
109	SS	E.T.R.	SS	E.T.R.	5'-8"	7'-0"	-	H	C		P	5
**110	SS	E.T.R.	SS	SS	5'-8"	7'-0"	1" Insulated	H		ED		4,6
**111	SS	E.T.R.	SS	SS	5'-8"	7'-0"	1" Insulated	H	C	ED		4,6
**112	SS	E.T.R.	SS	SS	5'-8"	7'-0"	1" Insulated	H	C	ED	P	4,6
113	Alum.	Alum.	Alum.	Alum.	6'-6"	7'-0"	1" Insulated					7,8,9
114	Alum.	Alum.	Alum.	Alum.	6'-6"	7'-0"	1" Insulated					7,8,9

Abbreviations

H	Replace all hinges on both leaves.
C	Replace with new closer, both leaves
ED	Replace with specified exit device
P	Furnish new to match existing holes
E.T.R.	Existing To Remain
SS	Stainless Steel
Alum.	Aluminum

Remarks

1	Replace top door stop & plug all exposed holes
2	Repair frame by welding
3	Replace threshold
4	Replace threshold, install with double row of fasteners
5	Install plate to patch existing hole
6	Replace frames. Reinstall existing doors.
7	Install new aluminum doors and frames
8	Provide all new door hardware
9	Doors and frames shall be removed in such a manner that they can be re-installed by Owner for a different application.

General Notes:

Replace all existing weather stripping and furnish new where missing.

Inspect all weather stripping at glazing. Contractor shall make all necessary repairs for failed caulk and loose gasketing.

Plug all open holes in frames and doors.

*Automatic door openers to remain.

All items removed for replacement shall be returned to Owner. This includes doors and frames.

All surfaces of doors and frames shall be cleaned/polished to remove rust, floor wax, grime, and blemishes.

Doors shall only open to a maximum of 120 degrees.

All door hardware shall be inspected and tightened if found to be loose.

Contractor shall maintain structural integrity during demolition and installation.

*See Alternate Bid 1 for details.

**See Alternate Bid 2 for details.