



**DANE COUNTY DEPT. OF
PUBLIC WORKS, HIGHWAY &
TRANSPORTATION**

1919 Alliant Energy Center Way
Madison, Wisconsin 53713
Office: 608/266-4018 ♦ Fax: 608/267-1533
Public Works Engineering Division

ADDENDUM

August 12, 2021

ATTENTION ALL REQUEST FOR BID (RFB) HOLDERS

RFB NO. 321024 - ADDENDUM NO. 01

ACCESSIBLE RAMP & HANDRAIL REPAIRS

DANE COUNTY JOB CENTER

**BIDS DUE: TUESDAY, AUGUST 17, 2021, 2:00 PM. DUE DATE AND
TIME ARE NOT CHANGED BY THIS ADDENDUM.**

This Addendum is issued to modify, explain or clarify the original Request for Bid (RFB) and is hereby made a part of the RFB. Please attach this Addendum to the RFB.

PLEASE MAKE THE FOLLOWING CHANGES:

1. RFB No. 321024 – Drawings:

Delete all sheets issued in the drawing package in the RFB set and replace with RFB No. 321024 Addendum No. 01 – Drawings (2021.08.12) attached hereto.

If any additional information about this Addendum is needed, please contact Steve Richards at 608/266-4592, Richards.steve@countyofdane.com.

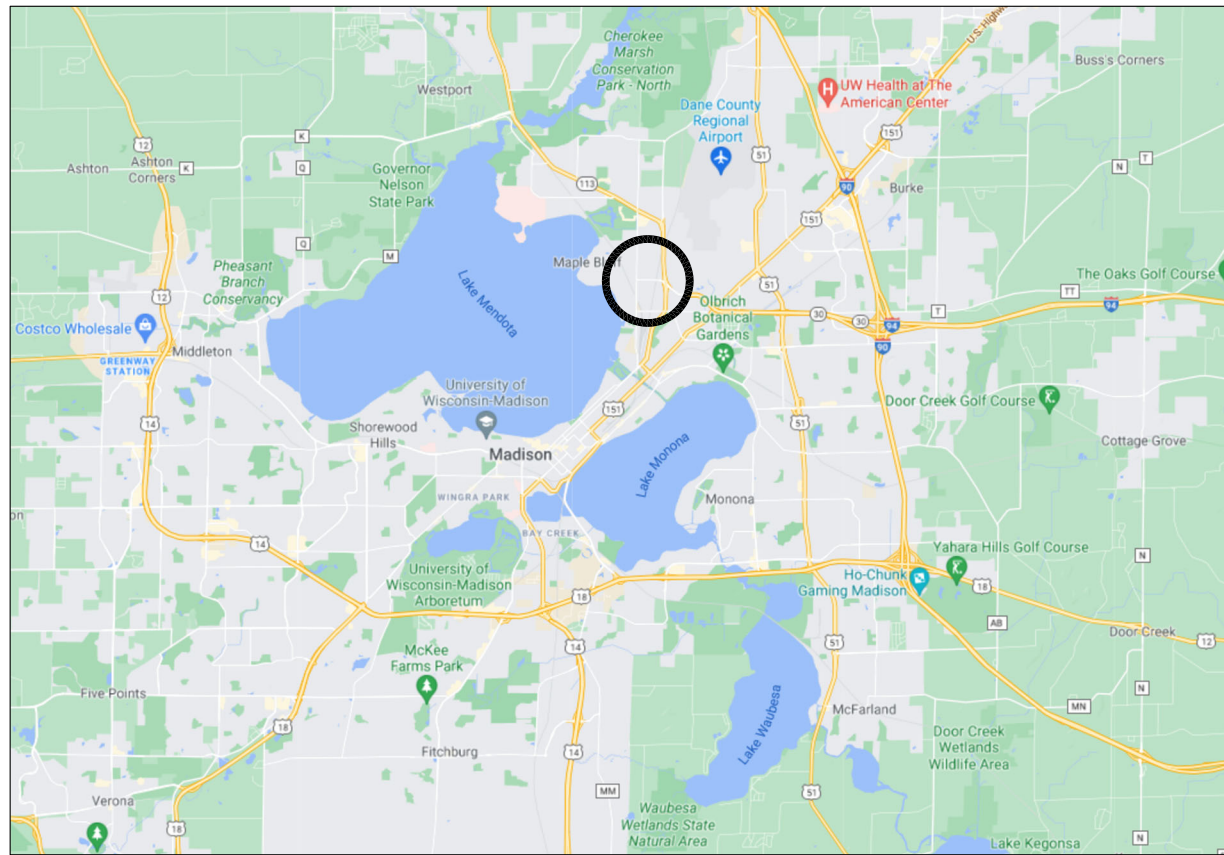
Sincerely,

Steve Richards

Project Manager

Enclosures:

RFB No. 321024 Addendum No. 01 – Drawings (2021.08.12)



PROJECT:

RFB NO. 321024
JOB CENTER ACCESSIBLE RAMP AND HANDRAIL REPAIR
DANE COUNTY JOB CENTER
1819 ABERG AVENUE
MADISON, WI 53704

OWNER:

DANE COUNTY
210 MARTIN LUTHER KING, JR. BOULEVARD,
ROOM GA-8
MADISON, WI 53703

CONSULTANT:

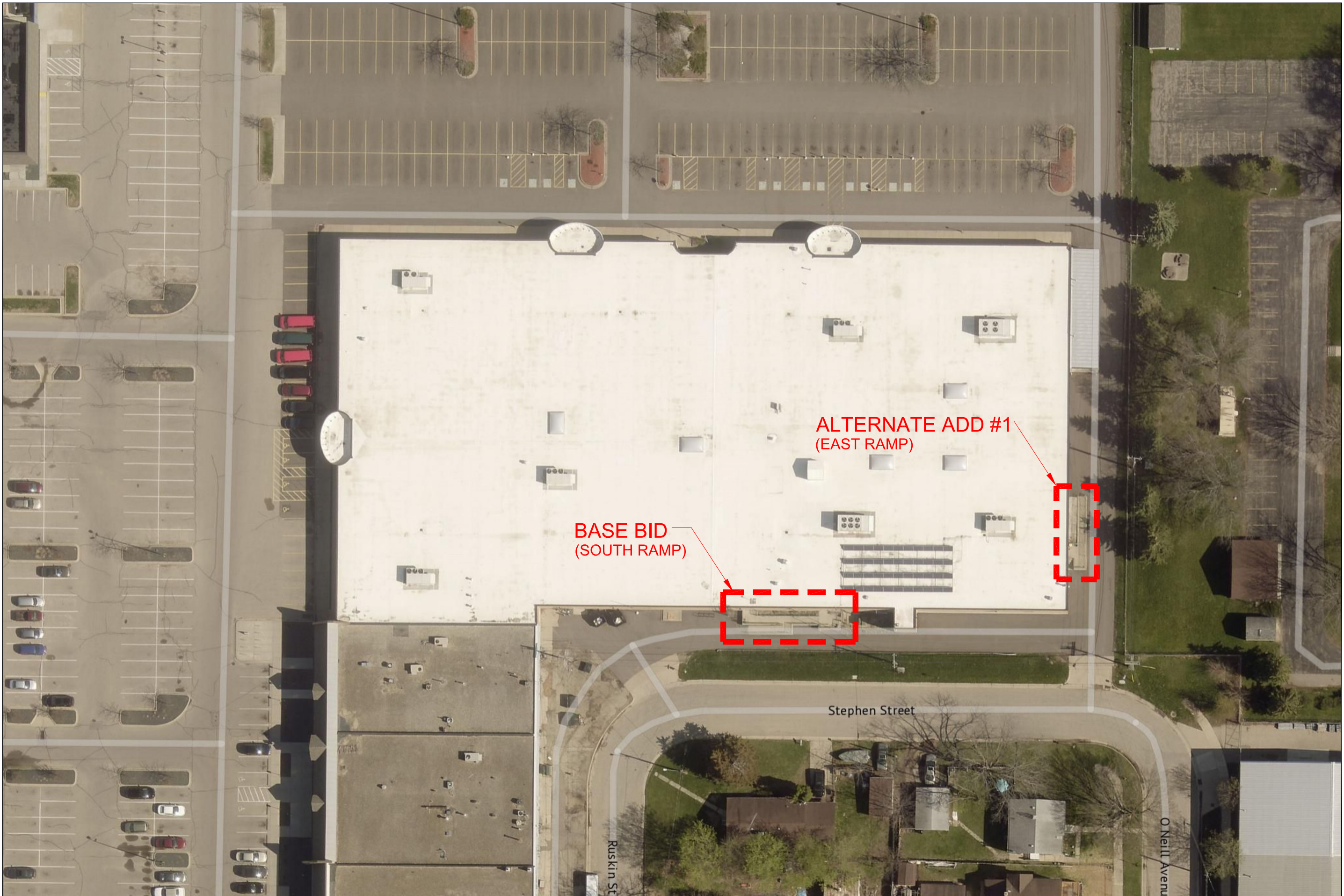
INDUSTRIAL ROOFING SERVICES
13000 WEST SILVER SPRING DRIVE
BUTLER, WISCONSIN 53007
(262) 432-0500



1819 ABERG AVENUE, MADISON, WI

SHEET INDEX

- A0 REV - COVER SHEET
- A1.0 - OVERALL SITE PLAN
- A1.1 REV - BASE BID - SOUTH RAMP FRONT VIEW
- A1.2 - BASE BID - SOUTH RAMP BACKSIDE VIEW
- A1.3 REV - BASE BID - SOUTH RAMP SIDE VIEWS
- A1.4 REV - ALTERNATE ADD #1 - EAST RAMP FRONT VIEW
- A1.5 REV - ALTERNATE ADD #1 - EAST RAMP BACKSIDE VIEW
- A1.6 REV - ALTERNATE ADD #1 - EAST RAMP SIDE VIEWS
- A2.0 - RAMP REPAIR DETAILS 1-4
- A2.1 REV - RAMP REPAIR DETAILS 5-8



ALTERNATE ADD #1
(EAST RAMP)

BASE BID
(SOUTH RAMP)

Stephen Street

Ruskin St

O'Neill Avenue



INDUSTRIAL ROOFING SERVICES, INC.
13000 WEST SILVER SPRING DRIVE - BUTLER, WI 53007
PHONE: (800) 236-3477 / (262) 432-0500 FAX: (262) 432-0504

CONSULTANT DOES NOT WARRANT THE ACCURACY OF THE EXISTING CONDITIONS SHOWN ON THIS DRAWING. USER SHALL FIELD VERIFY EXISTING CONDITIONS PRIOR TO ANY WORK RELATED TO THIS BUILDING.

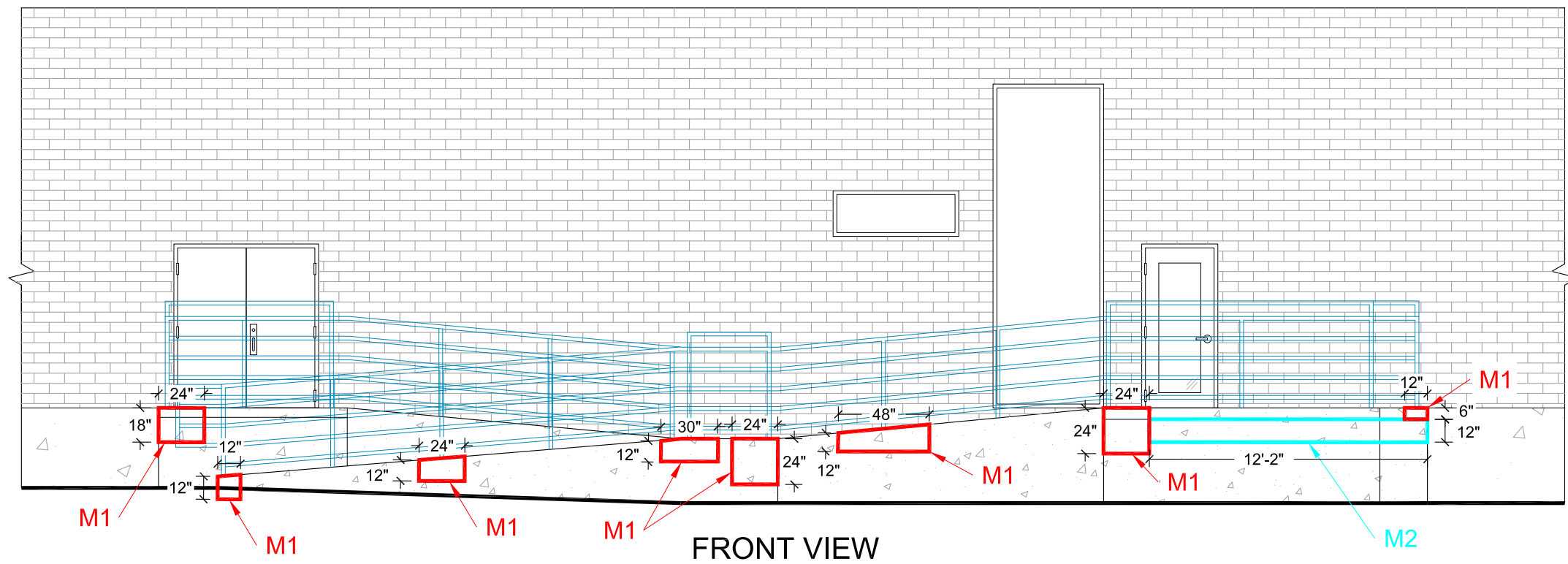
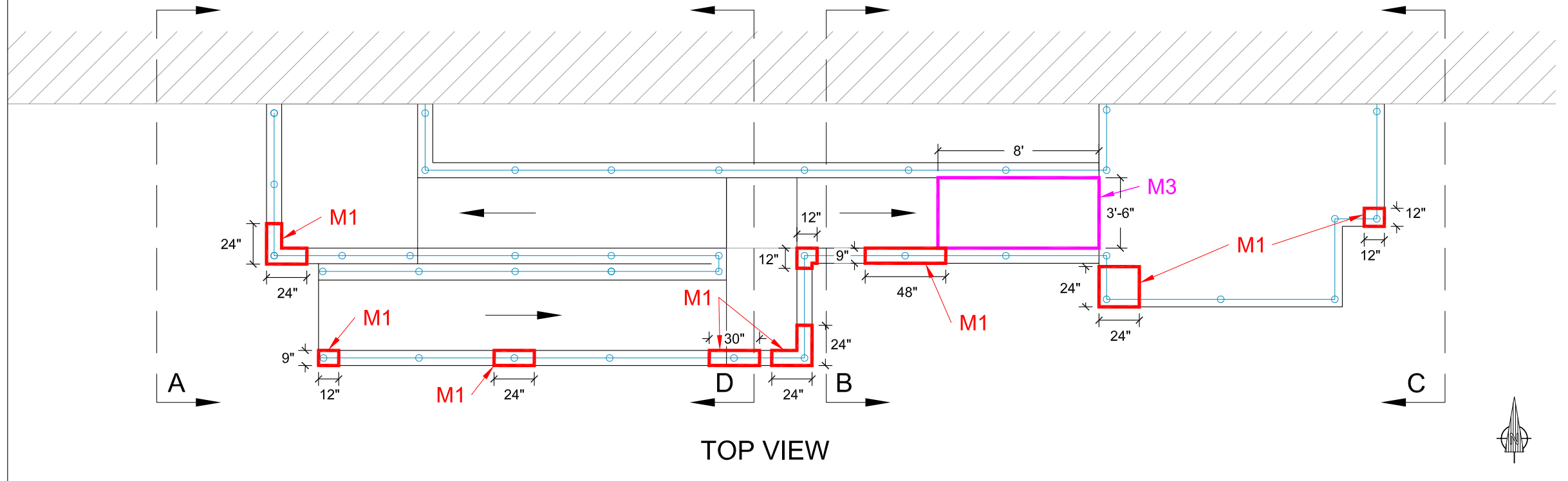
PROJECT NAME: DANE COUNTY JOB CENTER
1819 ABERG AVENUE, MADISON, WI
TITLE: OVERALL SITE PLAN

DRAWN BY: SPR DATE: 8/4/2021
IRS SPEC NO.: 17463
SCALE: N.T.S. DRAWING NO.: A1.0



NOTES:

NOTE: REMOVE AND REPLACE ALL JOINT SEALANT



IRS
INDUSTRIAL ROOFING SERVICES, INC.
 13000 WEST SILVER SPRING DRIVE - BUTLER, WI 53007
 PHONE: (800) 236-3477 / (262) 432-0500 FAX: (262) 432-0504

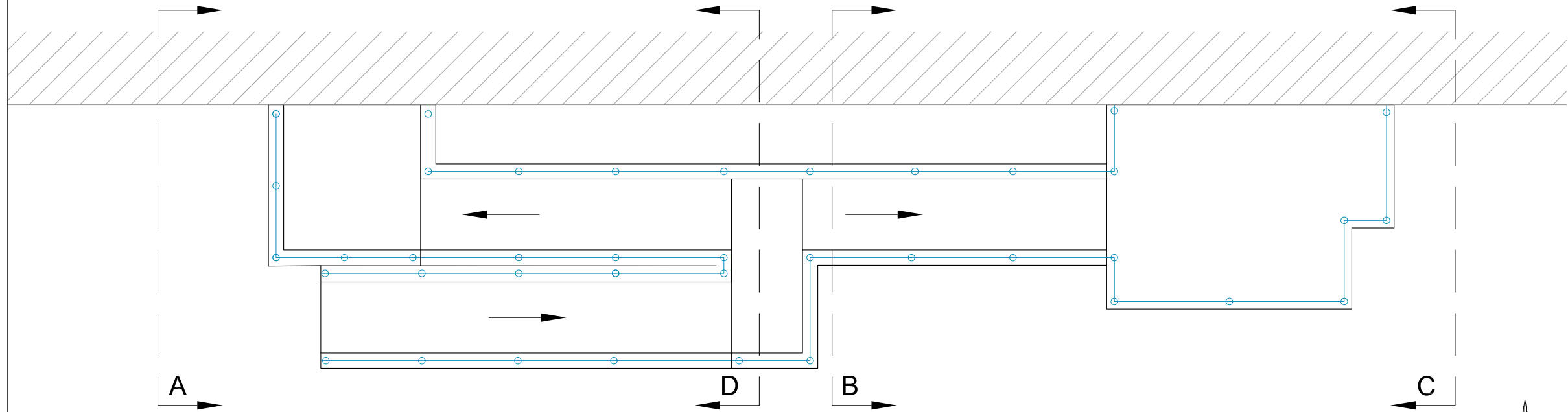
CONSULTANT DOES NOT WARRANT THE ACCURACY OF THE EXISTING CONDITIONS SHOWN ON THIS DRAWING. USER SHALL FIELD VERIFY EXISTING CONDITIONS PRIOR TO ANY WORK RELATED TO THIS BUILDING.

PROJECT NAME: DANE COUNTY JOB CENTER
 1819 ABERG AVENUE, MADISON, WI
 TITLE: BASE BID - SOUTH RAMP FRONT VIEW

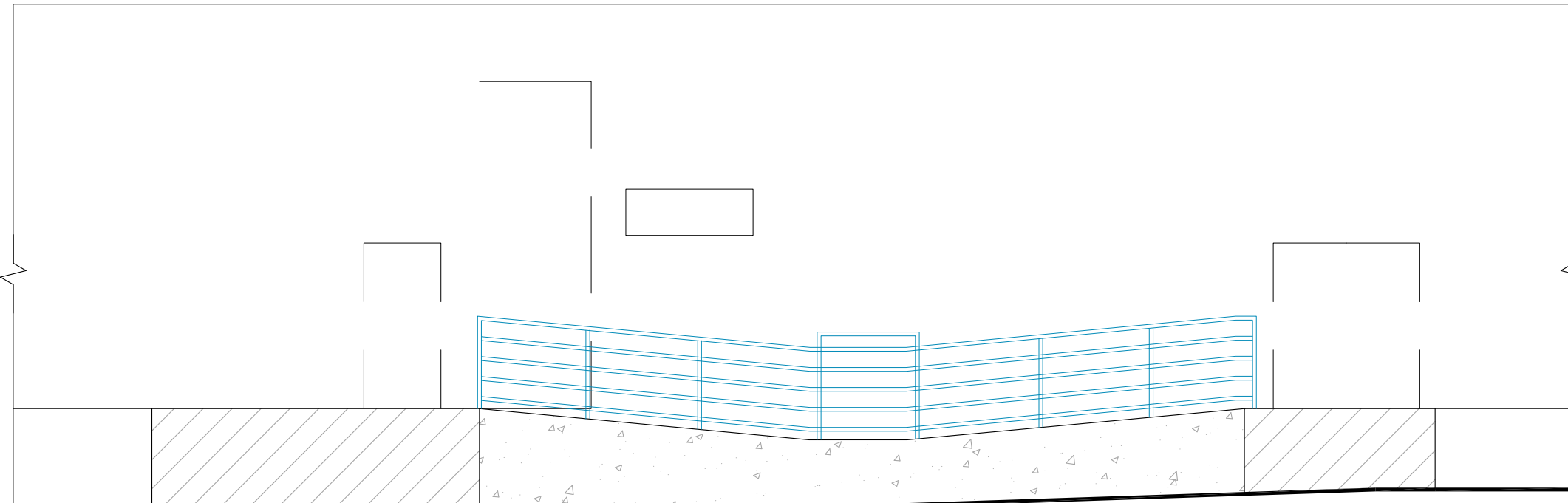
DRAWN BY: DATE: SPR 8/4/2021
 SCALE: DRAWING NO.: N.T.S. A1.1 REV

IRS SPEC NO.:	NOTES:
17463	

NOTE: REMOVE AND REPLACE ALL JOINT SEALANT



TOP VIEW



BACKSIDE VIEW

IRS
INDUSTRIAL ROOFING SERVICES, INC.
 13000 WEST SILVER SPRING DRIVE - BUTLER, WI 53007
 PHONE: (800) 236-3477 / (262) 432-0500 FAX: (262) 432-0504

CONSULTANT DOES NOT
 WARRANT THE ACCURACY
 OF THE EXISTING
 CONDITIONS SHOWN ON
 THIS DRAWING. USER
 SHALL FIELD VERIFY
 EXISTING CONDITIONS
 PRIOR TO ANY WORK
 RELATED TO THIS BUILDING.

PROJECT NAME:
 DANE COUNTY
 JOB CENTER
 1819 ABERG AVENUE, MADISON, WI

TITLE:
 BASE BID - SOUTH RAMP
 BACKSIDE VIEW

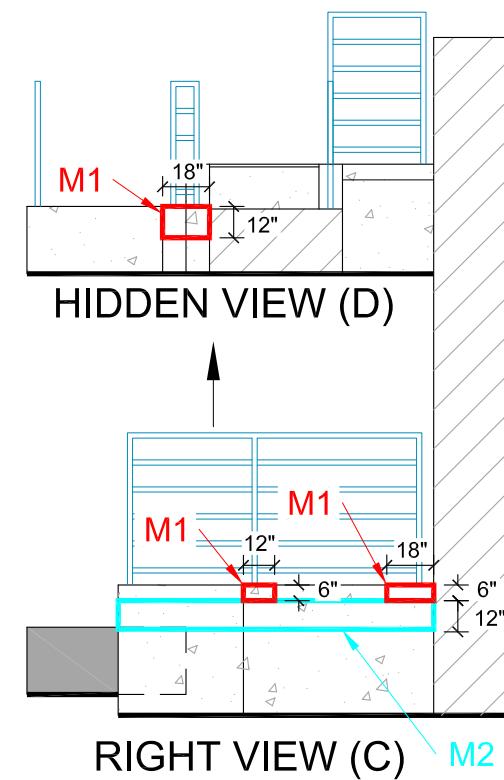
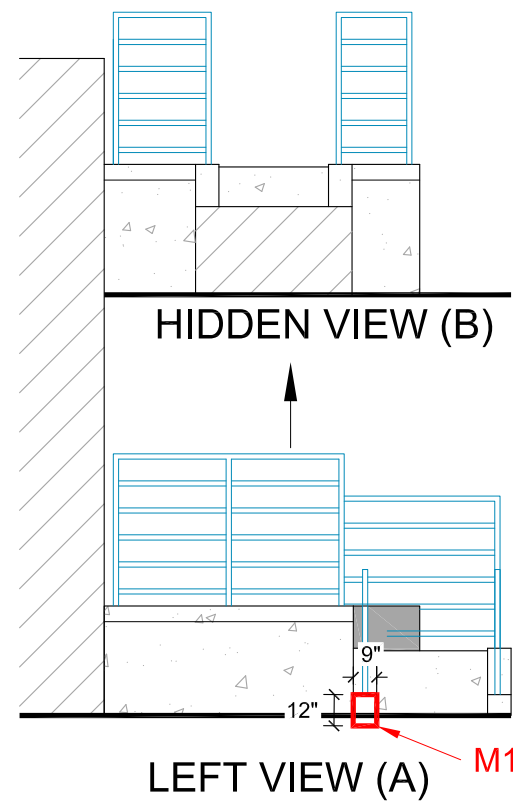
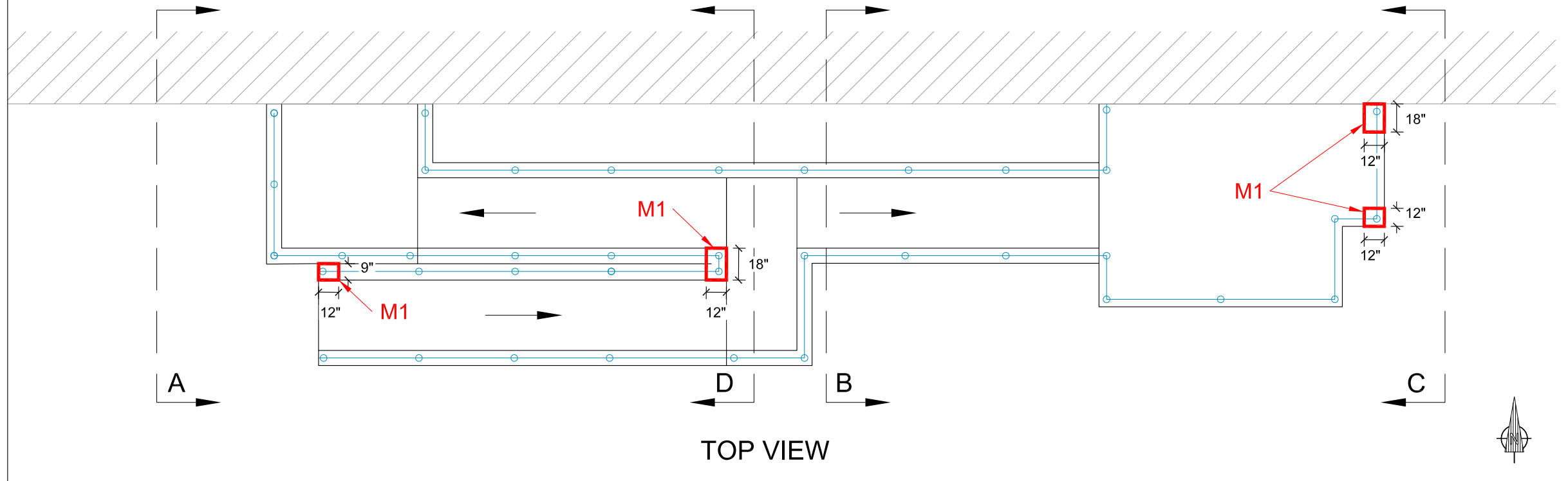
DRAWN BY: DATE:
 SPR 8/4/2021

SCALE: DRAWING NO.:
 N.T.S. A1.2

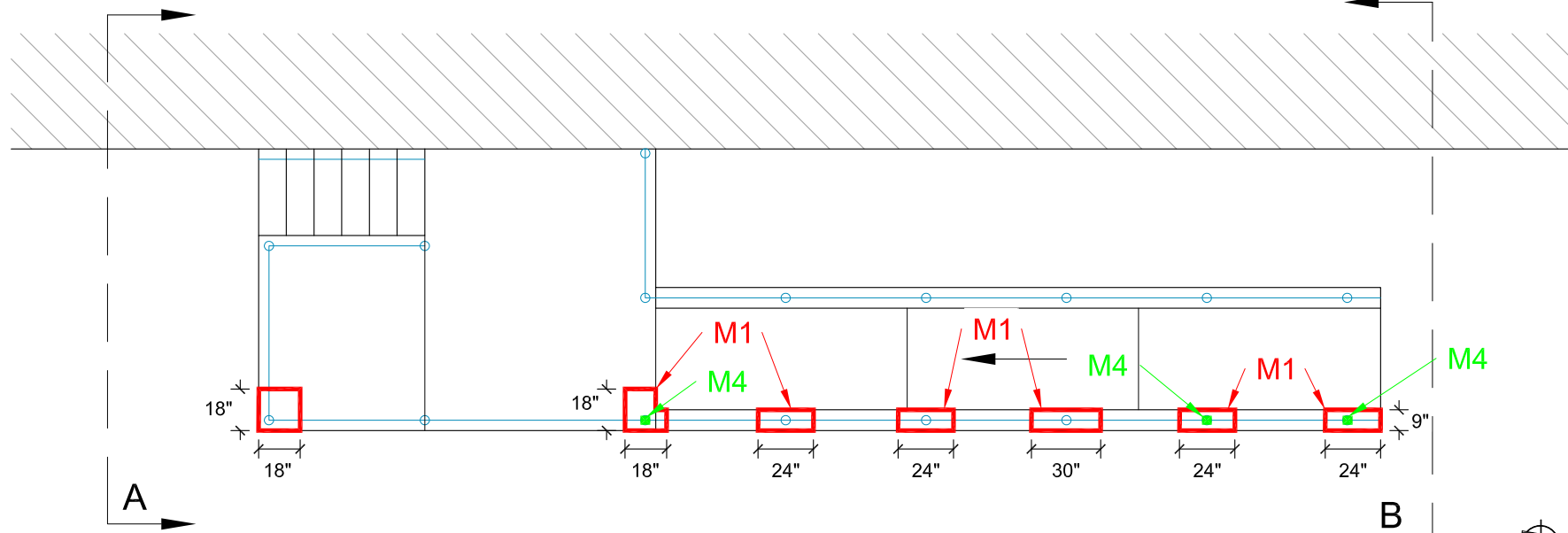
IRS SPEC NO.:
 17463

NOTES:

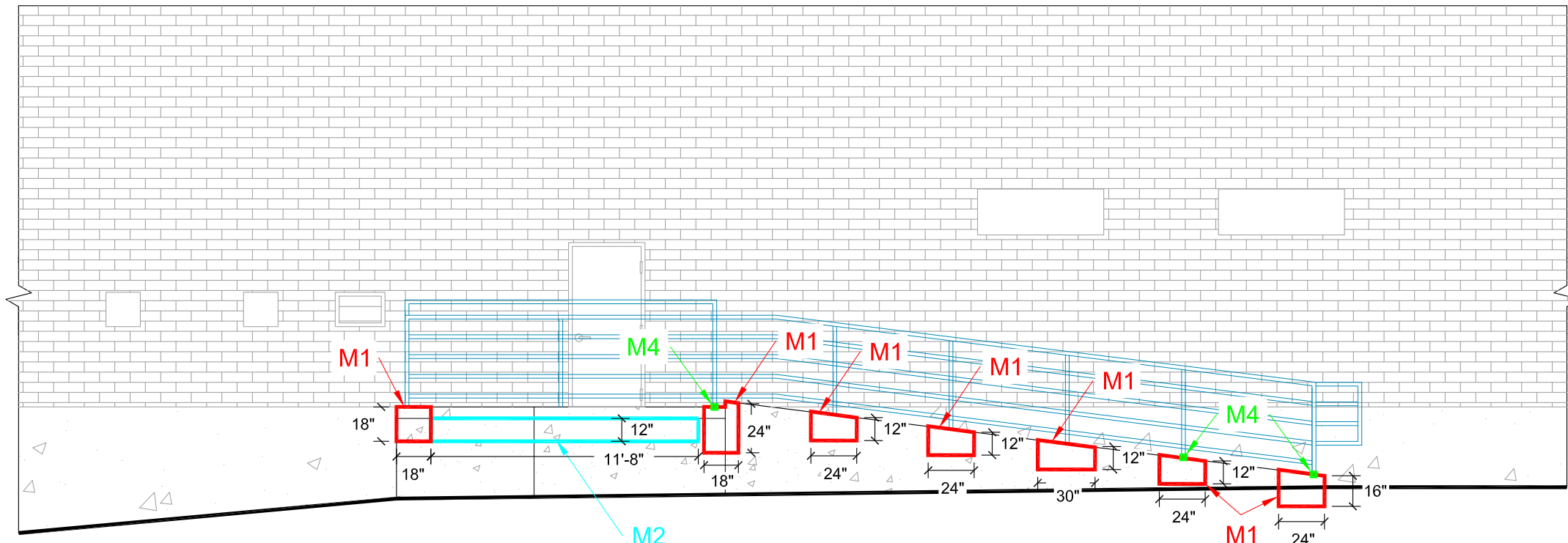
NOTE: REMOVE AND REPLACE ALL JOINT SEALANT



NOTE: REMOVE AND REPLACE ALL JOINT SEALANT



TOP VIEW



FRONT VIEW

IRS
INDUSTRIAL ROOFING SERVICES, INC.
 13000 WEST SILVER SPRING DRIVE - BUTLER, WI 53007
 PHONE: (800) 236-3477 / (262) 432-0500 FAX: (262) 432-0504

CONSULTANT DOES NOT
 WARRANT THE ACCURACY
 OF THE EXISTING
 CONDITIONS SHOWN ON
 THIS DRAWING. USER
 SHALL FIELD VERIFY
 EXISTING CONDITIONS
 PRIOR TO ANY WORK
 RELATED TO THIS BUILDING.

PROJECT NAME:
 DANE COUNTY
 JOB CENTER
 1819 ABERG AVENUE, MADISON, WI

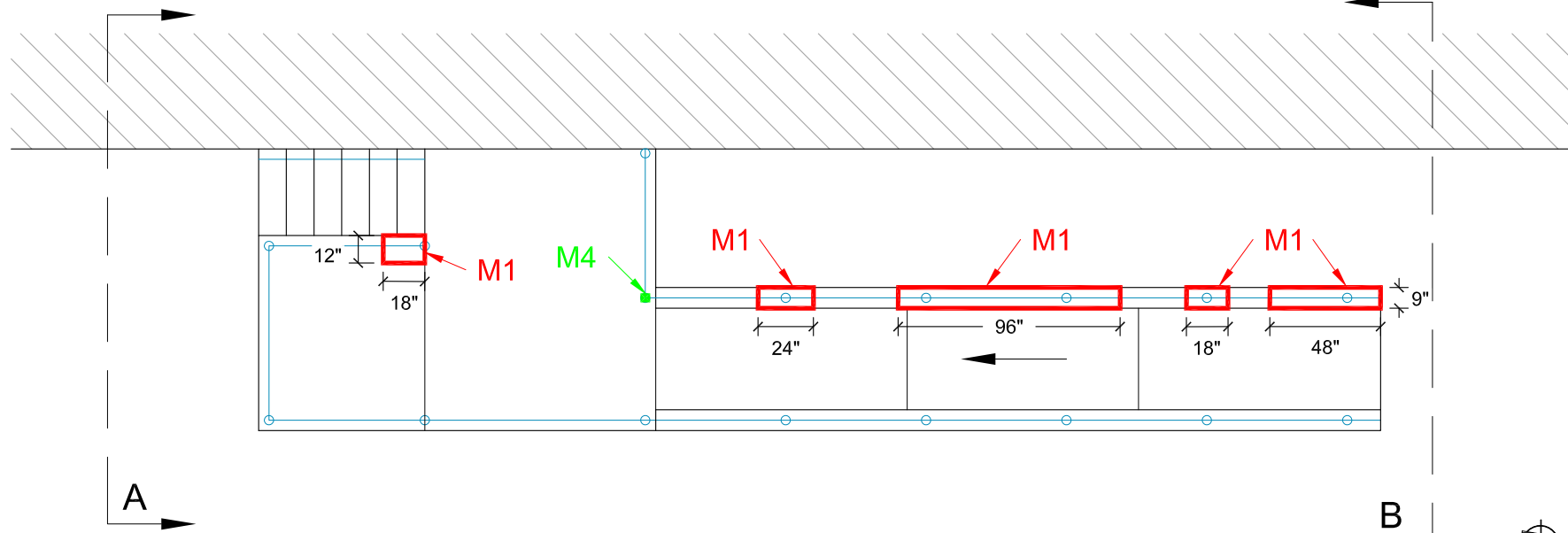
TITLE:
 ALTERNATE ADD #1 - EAST RAMP
 FRONT VIEW

DRAWN BY: DATE:
 SPR 8/4/2021

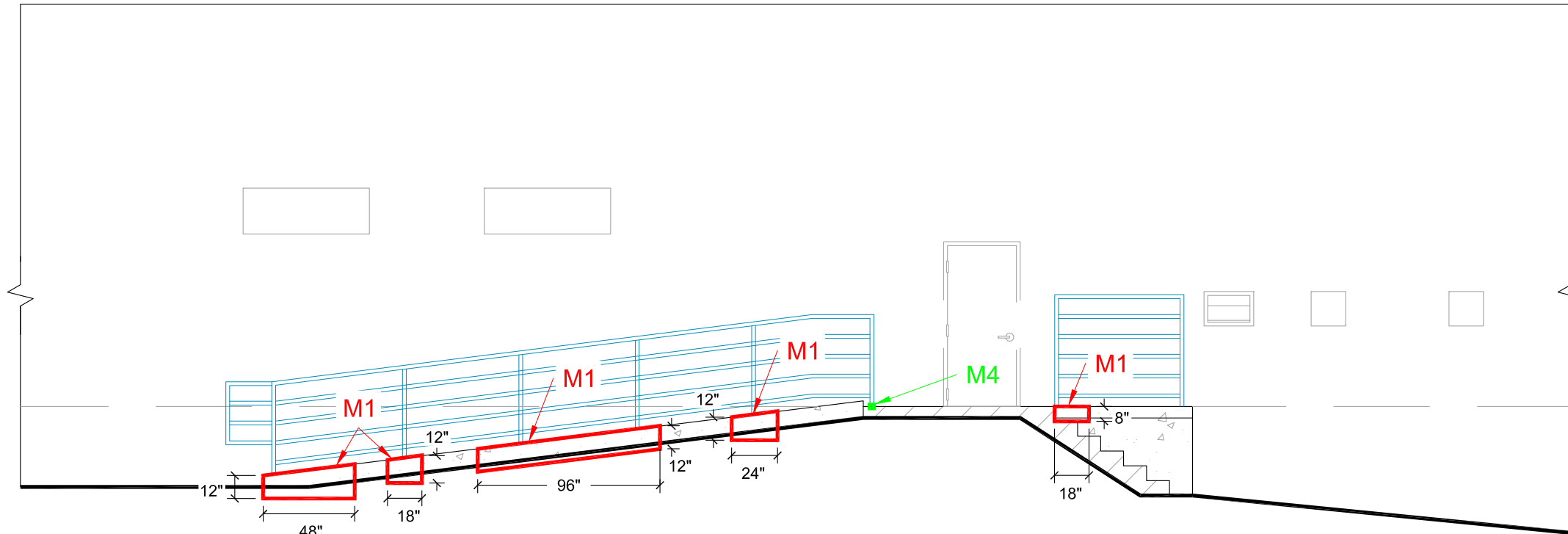
SCALE: DRAWING NO.:
 N.T.S. A1.4 REV

IRS SPEC NO.:	NOTES:
17463	

NOTE: REMOVE AND REPLACE ALL JOINT SEALANT

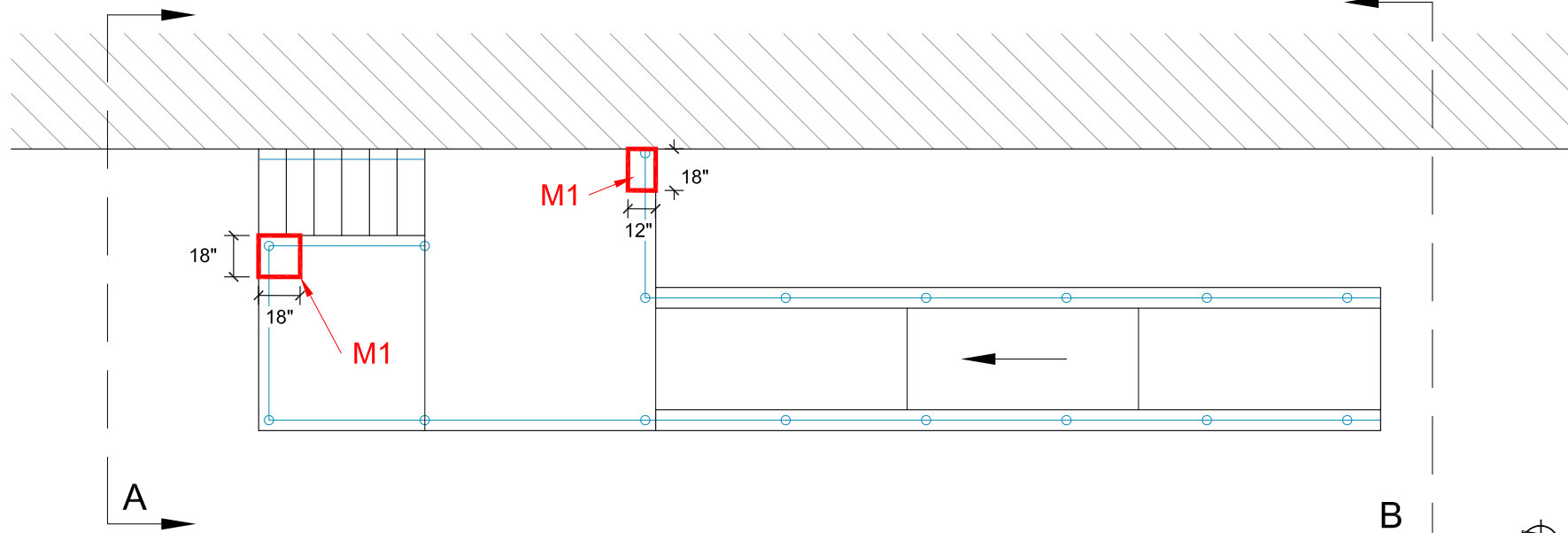


TOP VIEW

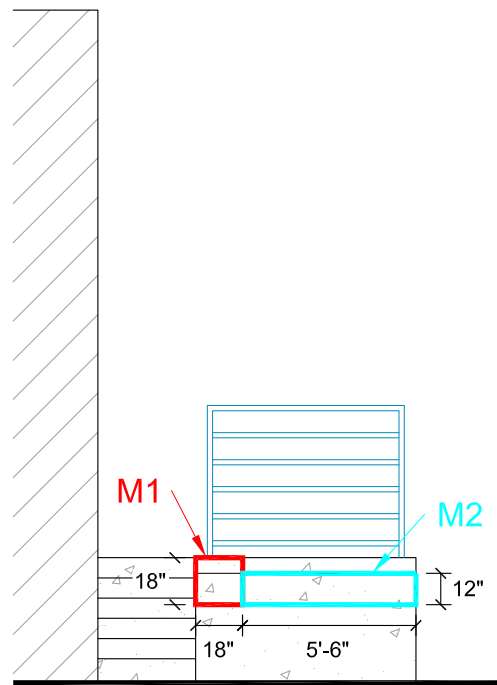


BACKSIDE VIEW

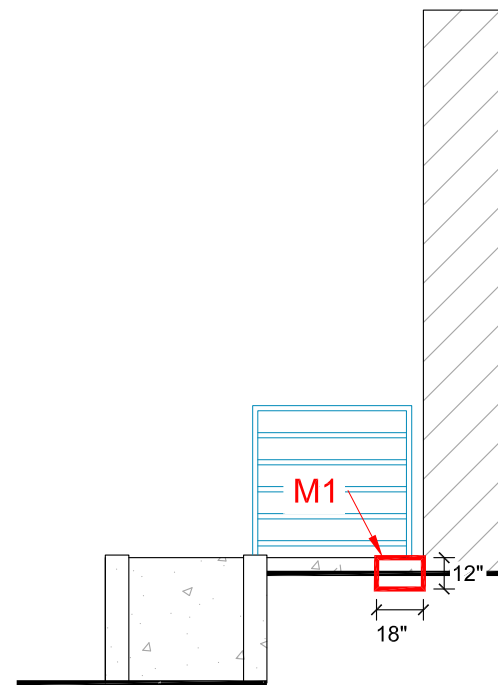
NOTE: REMOVE AND REPLACE ALL JOINT SEALANT



TOP VIEW



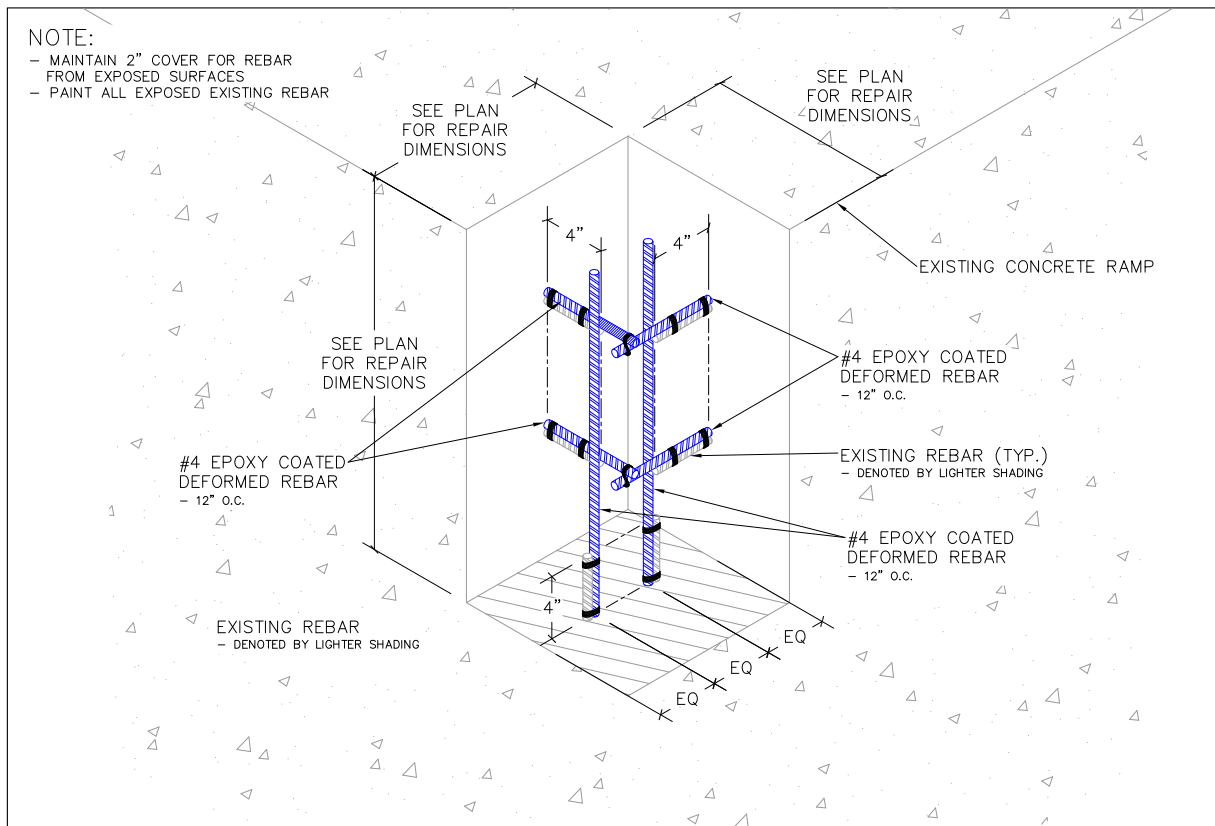
LEFT VIEW (A)



RIGHT VIEW (B)

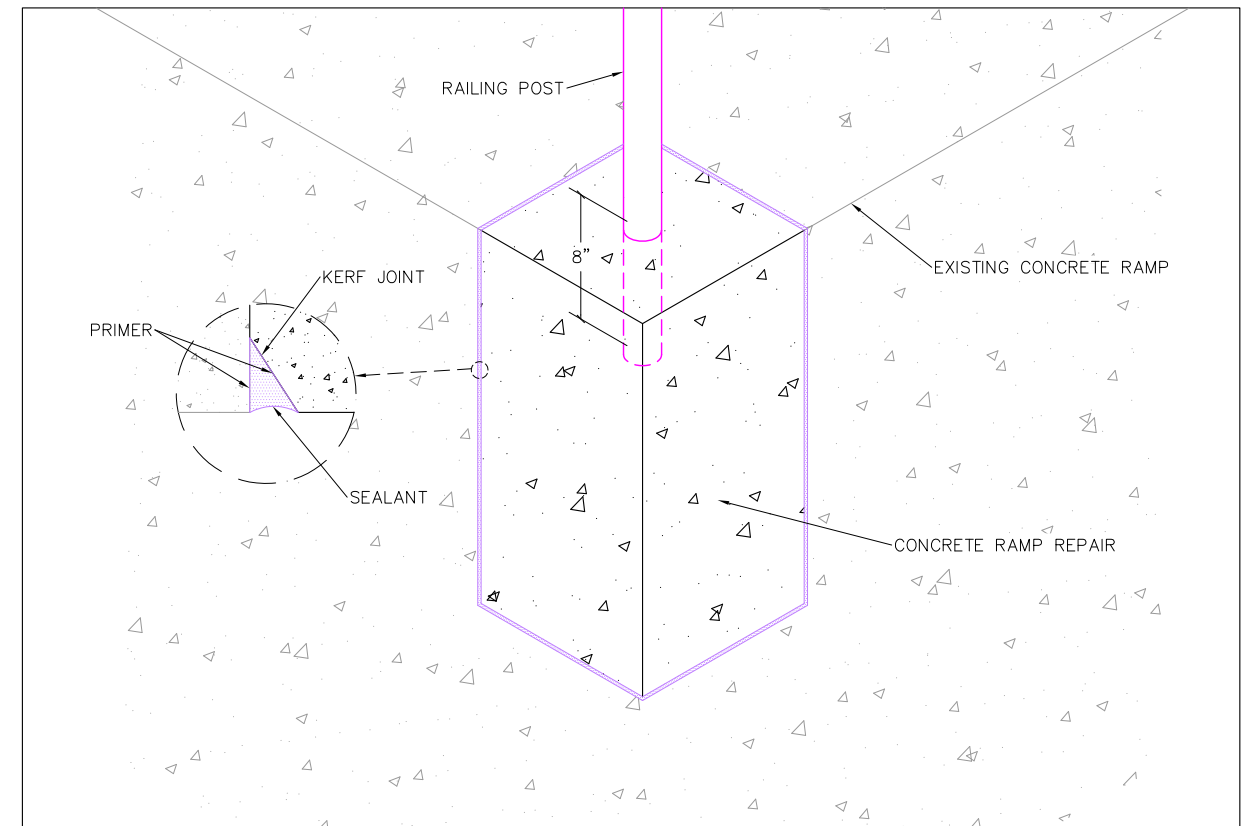
NOTE:

- MAINTAIN 2" COVER FOR REBAR FROM EXPOSED SURFACES
- PAINT ALL EXPOSED EXISTING REBAR



DETAIL 1: CORNER RAMP REPAIR

NOT TO SCALE

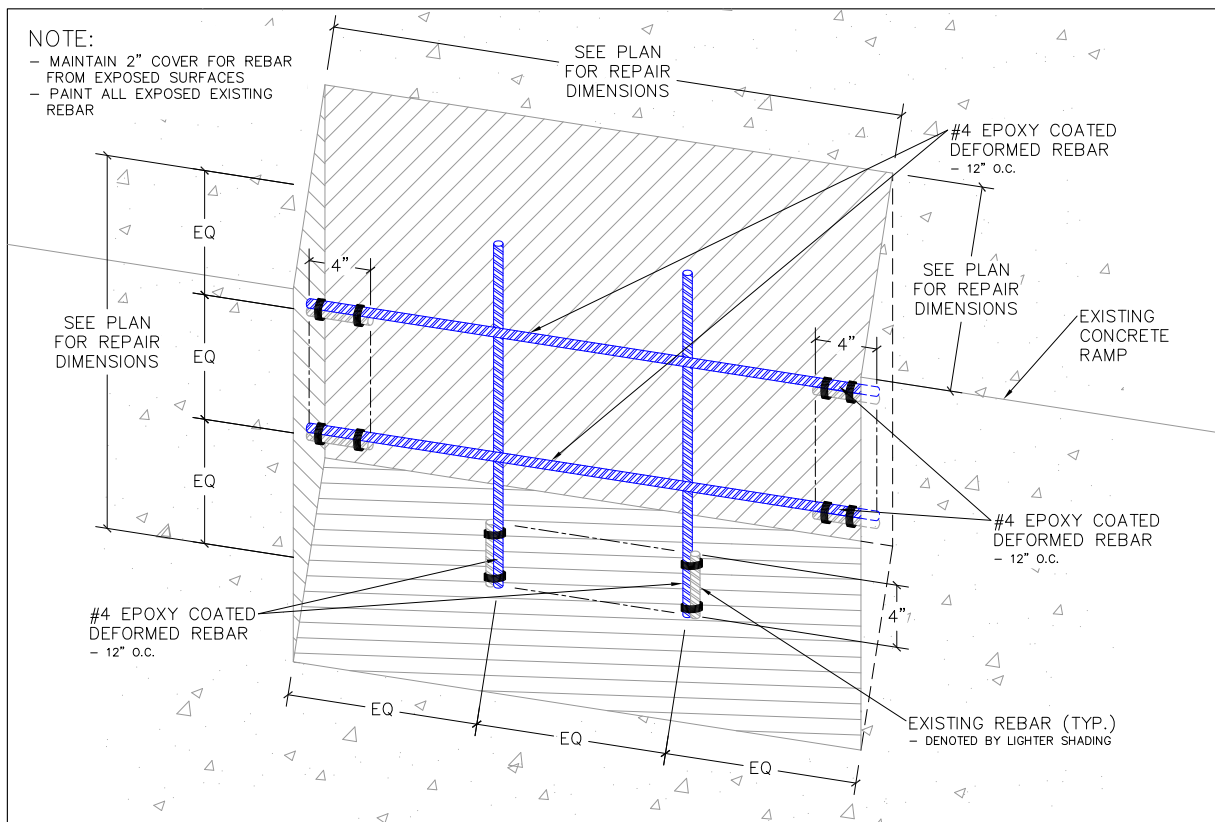


DETAIL 2: CORNER RAMP REPAIR

NOT TO SCALE

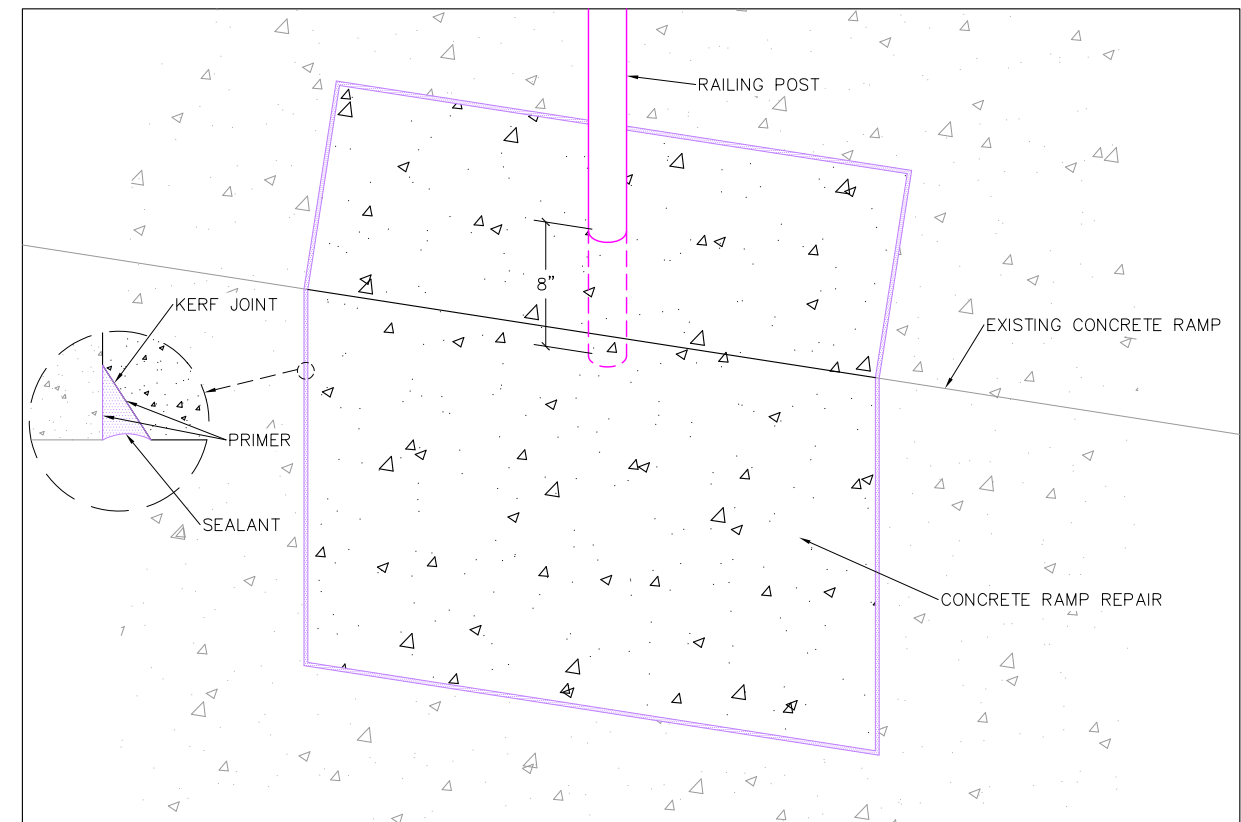
NOTE:

- MAINTAIN 2" COVER FOR REBAR FROM EXPOSED SURFACES
- PAINT ALL EXPOSED EXISTING REBAR



DETAIL 3: SIDE RAMP REPAIR

NOT TO SCALE



DETAIL 4: SIDE RAMP REPAIR

NOT TO SCALE



CONSULTANT DOES NOT WARRANT THE ACCURACY OF THE EXISTING CONDITIONS SHOWN ON THIS DRAWING. USER SHALL FIELD VERIFY EXISTING CONDITIONS PRIOR TO ANY WORK RELATED TO THIS BUILDING.

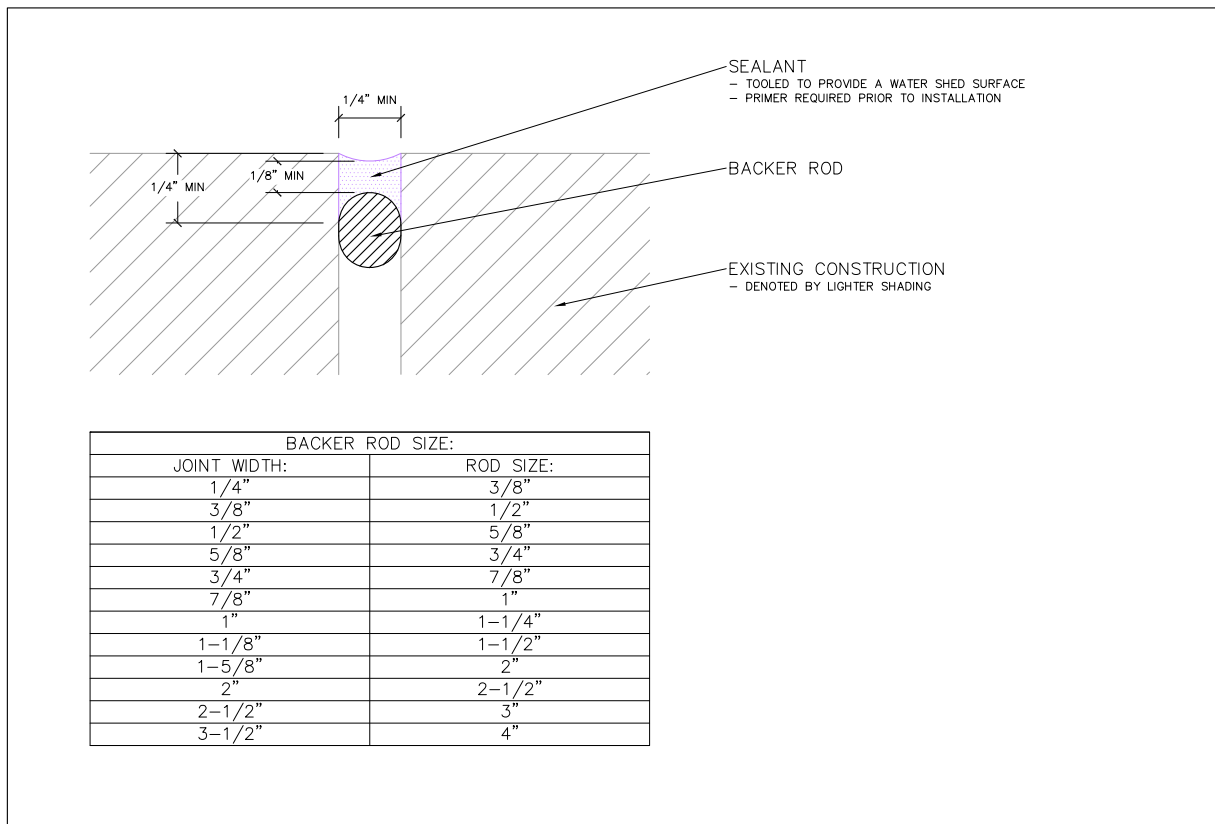
PROJECT NAME: DANE COUNTY JOB CENTER
1819 ABERG AVENUE, MADISON, WI

DRAWN BY: DATE: SPR 8/4/2021
IRS SPEC NO.: 17463

SCALE: DRAWING NO.: N.T.S. A2.0

TITLE: EXTERIOR REPAIR DETAILS

NOTES:

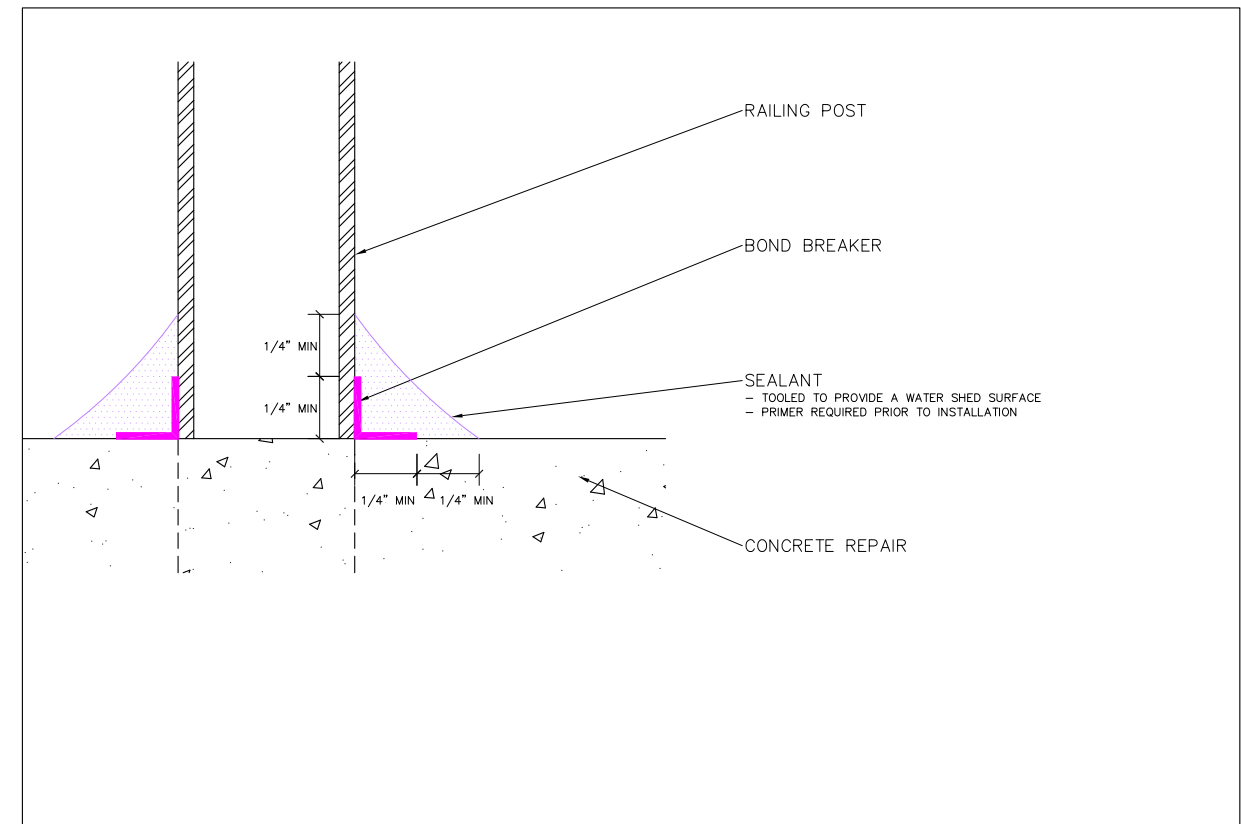


BACKER ROD SIZE:

JOINT WIDTH:	ROD SIZE:
1/4"	3/8"
3/8"	1/2"
1/2"	5/8"
5/8"	3/4"
3/4"	7/8"
7/8"	1"
1"	1-1/4"
1-1/8"	1-1/2"
1-5/8"	2"
2"	2-1/2"
2-1/2"	3"
3-1/2"	4"

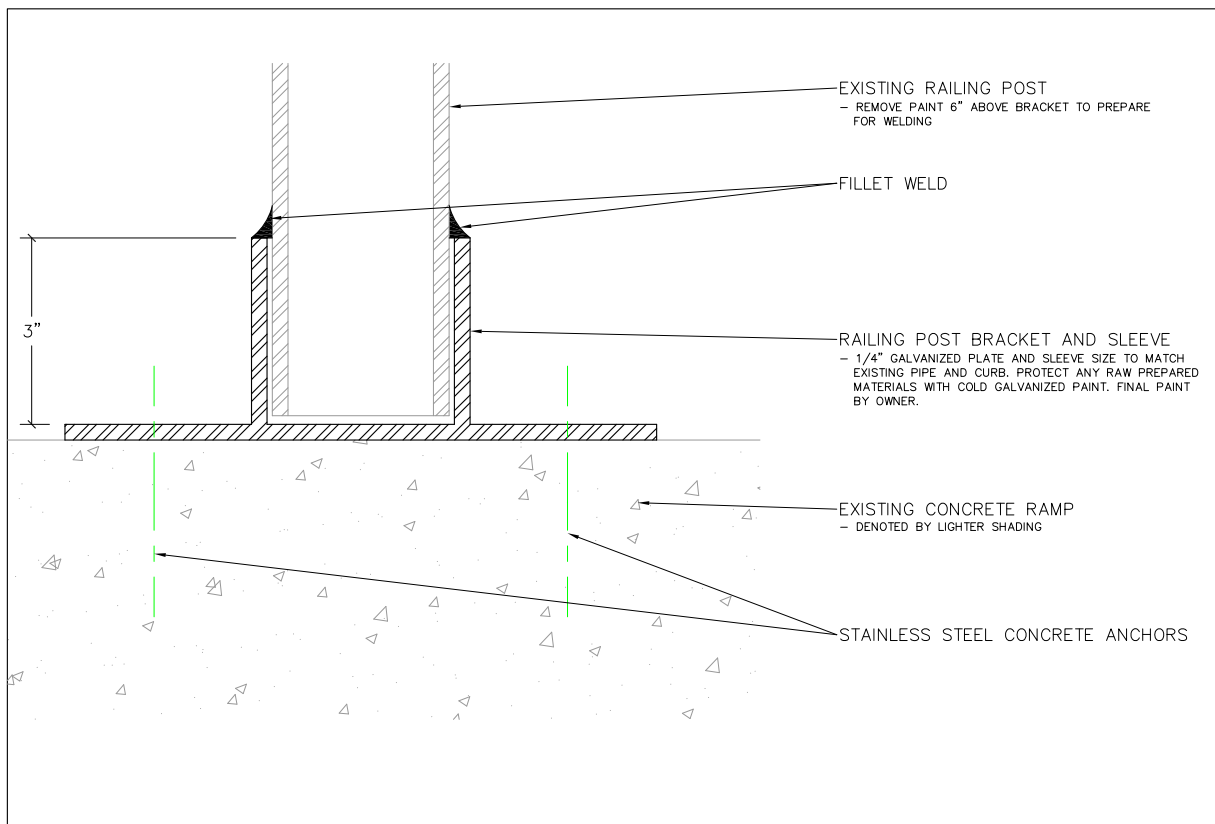
DETAIL 5: SEALANT JOINT

NOT TO SCALE



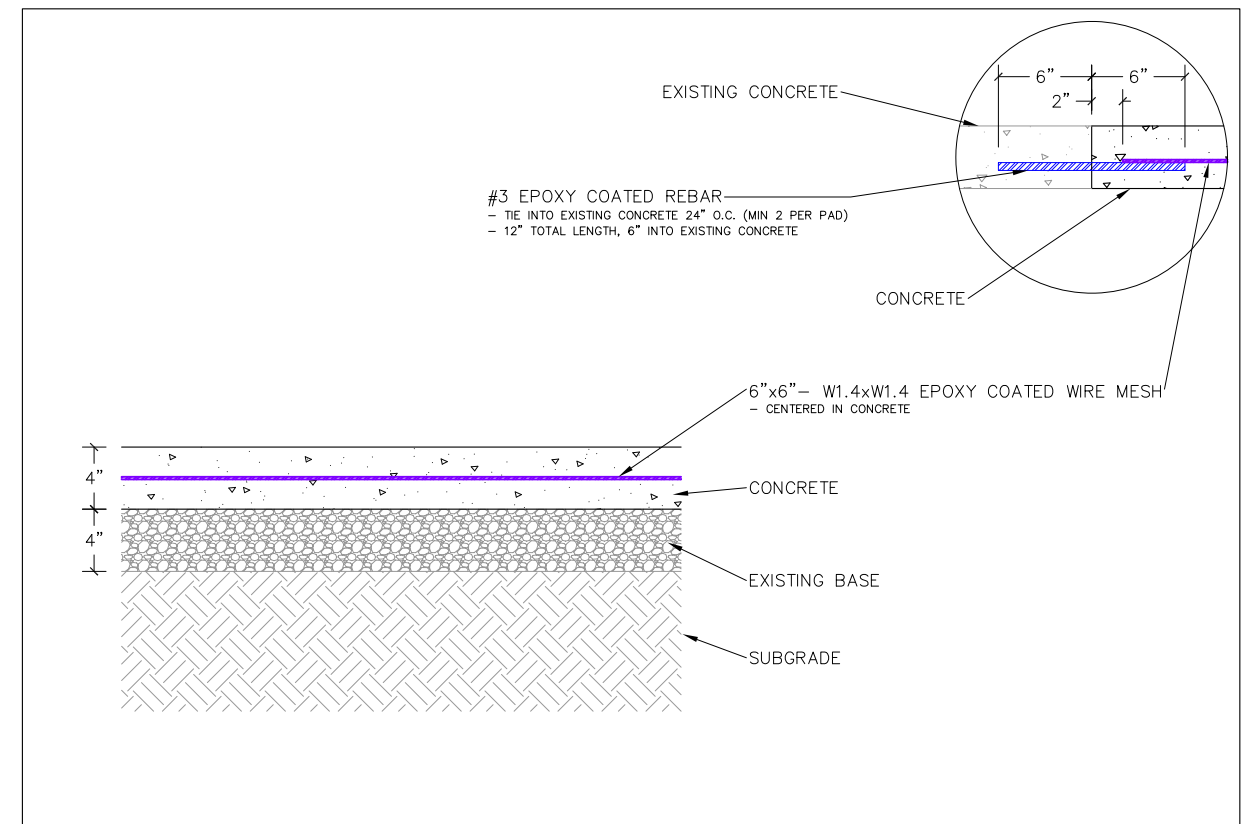
DETAIL 6: RAILING POST SEALANT

NOT TO SCALE



DETAIL 7: RAILING POST BRACKET (REVISED)

NOT TO SCALE



DETAIL 8: CONCRETE SIDEWALK

NOT TO SCALE