



# DANE COUNTY DEPARTMENT of PUBLIC WORKS, HIGHWAY and TRANSPORTATION

County Executive  
Joseph T. Parisi

1919 Alliant Energy Center Way ♦ Madison, Wisconsin 53713  
Phone: (608) 266-4018 ♦ Fax: (608) 267-1533

Commissioner / Director  
Gerald J. Mandli

May 12, 2015

## ATTENTION ALL REQUEST FOR BID (RFB) HOLDERS

### RFB NO. 315029 - ADDENDUM NO. 1

#### WOOD GRINDING EQUIPMENT DANE COUNTY LANDFILL SITE #2 7102 U.S. HIGHWAY 12 & 18 MADISON, WISCONSIN

---

**BIDS, PROPOSALS DUE:** Thursday, May 21, 2015, 2:00 PM.  
DUE DATE AND TIME ARE NOT CHANGED BY THIS ADDENDUM

---

This Addendum is issued to modify, explain or clarify the original Request for Bid (RFB) and is hereby made a part of the RFB. Bidders must acknowledge this addendum on the bid form.

#### PLEASE MAKE THE FOLLOWING CHANGES:

- 1. Page 5 – Standard Terms and Conditions**  
Remove Page 5; replace with new Page 5, issued with this Addendum. The revised page is marked “**Addendum No. 1**”. The new page changes “Purchasing Division” to “Solid Waste Division” in Section 8.1
- 2. Pages 16 and 17 – Detailed Specifications Bid Forms**  
Remove Pages 16 and 17; replace with new Pages 16 and 17, issued with this Addendum. These revised pages are marked “**Addendum No. 1**”. The new pages correct the orientation of the discharge conveyor to 90 degrees as shown on the plans.
- 3. Pages 16 – Detailed Specifications Bid Form**  
Clarification: Cold weather package consists of a heating element for the hydraulic fluid tank.
- 4. Sheets E202, E600, E800 – Motor Control Center Location**  
Add Sheets E202, E600, and E800 from RFB 315011 CONSTRUCT C&D MATERIALS RECOVERY FACILITY. These sheets have been included to provide details on the motor control center (MCC) location for the wood grinding equipment and the available fault currents for the equipment. Feeder conductors to MCC to be installed under another project (RFB 315011). Connections from MCC to wood grinding equipment are to be completed under this project (RFB 315029). Complete plans and specifications for the planned building modifications (RFB 315011) may be obtained by downloading the bid documents from [countyofdane.com/pwbids](http://countyofdane.com/pwbids)

**5. Sheets S100 and S300 – Discharge Conveyor Height**

Add Sheets S100 and S300 from RFB 315011 CONSTRUCT C&D MATERIALS RECOVERY FACILITY. These sheets have been included to provide details on the wall height that the wood grinder discharge conveyor must reach over. Complete plans and specifications for the planned building modifications (RFB 315011) may be obtained by downloading the bid documents from [countyofdane.com/pwbids](http://countyofdane.com/pwbids)

**6. SECTION 11 90 01 – Horizontal Wood Grinder Specifications**

Add PART 2.01 B: Screen shall be 3” square-hole (standard) screen or equal.

If any additional information about this Addendum is needed, please contact Mike Rupiper at (608) 266-4990, or [rupiper.michael@countyofdane.com](mailto:rupiper.michael@countyofdane.com)

Enclosures:

Page 5  
Page 16  
Page 17  
Sheet E202  
Sheet E600  
Sheet E800  
Sheet S100  
Sheet S300

**STANDARD TERMS AND CONDITIONS**  
(Request For Bids/Proposals/Contracts)  
Dane County Solid Waste Division  
Rev. 11/13

1.0 APPLICABILITY: The terms and conditions set forth in this document apply to Requests for Proposals (RFP), Bids and all other transactions whereby the County of Dane acquires goods or services, or both.

1.1 ENTIRE AGREEMENT: These Standard Terms and Conditions shall apply to any contract, including any purchase order, awarded as a result of this request. Special requirements of a resulting contract may also apply. Said written contract with referenced parts and attachments shall constitute the entire agreement, and no other terms and conditions in any document, acceptance, or acknowledgment shall be effective or binding unless expressly agreed to in writing by the County. Unless otherwise stated in the agreement, these standard terms conditions supersede any other terms and/or conditions applicable to this agreement.

1.2 DEFINITIONS: As used herein, "vendor" includes a provider of goods or services, or both, who is responding to an RFP or a bid, and "bid" includes a response to either an RFP or a bid.

2.0 SPECIFICATIONS: The specifications herein are the minimum acceptable. When specific manufacturer and model numbers are used, they are to establish a design, type of construction, quality, functional capability or performance level, or any combination thereof, desired. When alternates are proposed, they must be identified by manufacturer, stock number, and such other information necessary to establish equivalency. Dane County shall be the sole judge of equivalency. Vendors are cautioned to avoid proposing alternates to the specifications that may result in rejection of their bid.

3.0 DEVIATIONS AND EXCEPTIONS: Deviations and exceptions from terms, conditions, or specifications shall be described fully on the vendor's letterhead, signed, and attached to the bid. In the absence of such statement, the bid shall be accepted as in strict compliance with all terms, conditions, and specifications and vendor shall be held liable for injury resulting from any deviation.

4.0 QUALITY: Unless otherwise indicated in the request, all material shall be first quality. No pre-owned, obsolete, discontinued or defective materials may be used.

5.0 QUANTITIES: The quantities shown herein are based on estimated needs. The County reserves the right to increase or decrease quantities to meet actual needs.

6.0 DELIVERY: Deliveries shall be FOB destination freight prepaid and included unless otherwise specified. County will reject shipments sent C.O.D. or freight collect.

7.0 PRICING: Unit prices shown on the bid shall be the price per unit of sale as stated on the request or contract. For any given item, the quantity multiplied by the unit price shall establish the extended price, the unit price shall govern in the bid evaluation and contract administration.

7.1 Prices established in continuing agreements and term contracts may be lowered due to market conditions, but prices shall not be subject to increase for the term specified in the award. Vendor shall submit proposed increases to the contracting department thirty (30) calendar days before the proposed effective date of the price increase. Proposed increases shall be limited to fully documented cost increases to the vendor that are demonstrated to be industry wide. Price increases may not be granted unless they are expressed in bid documents and contracts or agreements.

7.2 Submission of a bid constitutes bidder's certification that no financial or personal relationship exists between the bidder and any county official or employee except as specially set forth in writing attached to and made a part of the bid. The successful bidder shall disclose any such relationship which develops during the term of the contract.

8.0 ACCEPTANCE-REJECTION: Dane County reserves the right to accept or reject any or all bids, to waive any technicality in any bid submitted and to accept any part of a bid as deemed to be in the best interests of the County. Submission of a proposal or a bid constitutes the making of an offer to contract and gives the County an option valid for 60 days after the date of submission to the County.

8.1 Bids **MUST** be dated and time stamped by the Dane County Solid Waste Division Office on or before the date and time that the bid is due. Bids deposited or time stamped in another office will be rejected. Actual receipt in the office of the Solid Waste division is necessary; timely deposit in the mail system is not sufficient. **THERE WILL BE NO EXCEPTIONS TO THIS POLICY.**

9.0 METHOD OF AWARD: Award shall be made to the lowest responsible responsive vendor conforming to specifications, terms, and conditions, or to the most advantageous bid submitted to the County on a quality versus price basis.

10.0 ORDERING/ACCEPTANCE: Written notice of award to a vendor in the form of a purchase order or other document, mailed or delivered to the address shown on the bid will be considered sufficient notice of acceptance of bid. A formal contract containing all provisions of the contract signed by both parties shall be used when required by the Dane County Purchasing Division.

11.0 PAYMENT TERMS AND INVOICING: Unless otherwise agreed, Dane County will pay properly submitted vendor invoices within thirty (30) days of receipt of goods and services. Payment will not be made until goods or services are delivered, installed (if required), and accepted as specified. Invoices presented for payment must be submitted in accordance with instructions contained on the purchase order.

11.1 NO WAIVER OF DEFAULT: In no event shall the making of any payment or acceptance of any service or product required by this Agreement constitute or be construed

**Part 3 – Detailed Specifications**

**Bid Forms  
Submit With Bid**

**Technical Specifications**

Bidder shall complete every space in the area provided with either a check mark to indicate the item being bid is exactly as specified (Complies), or deviates from bid specification (Does Not Comply). Any deviation from the minimum specifications stated herein must be identified in detail on the form provided and must include a description of how the proposed item/s differ from the bid requirements, along with detailed justification for such deviation. Bidder shall include photos and schematics as necessary, for complete clarification.

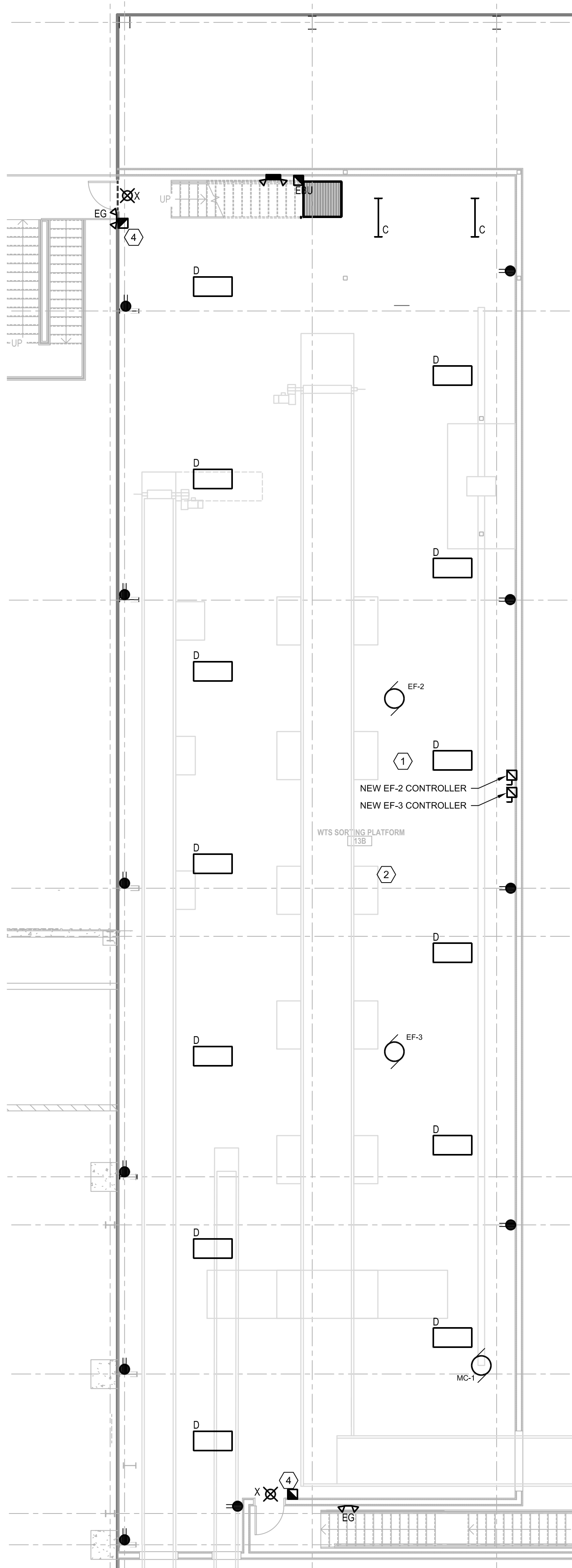
The specifications describe an acceptable unit. Minor variations in specification may be accepted if, in the opinion of County staff, they do not adversely affect the quality, maintenance or performance of the equipment. Dane County reserves the right to accept or reject any and all bids, to waive informalities and to choose the bid that best meets the specifications and needs of the County.

If no variations are listed, it will be assumed that all specifications are met

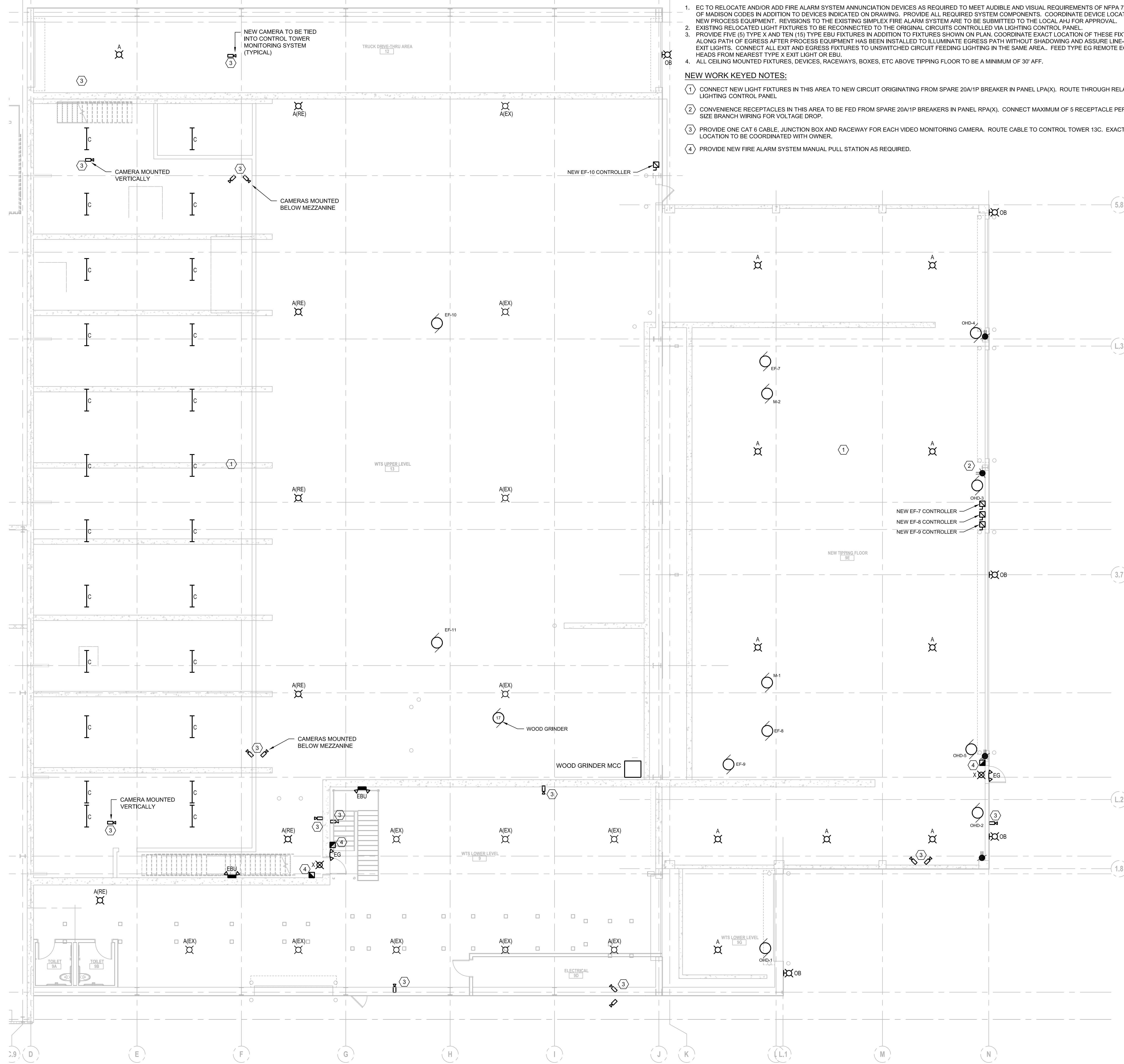
<b>Base Bid: 350 HP Stationary Wood Grinding Equipment</b>		
Manufacturer: _____		
Model #: _____	<b>Complies</b>	<b>Does Not Comply</b>
350 HP premium efficiency TEFC electric motor with automatic load regulation, motor control center, solid state soft start (600 amp)		
50 HP hydraulic system to operate infeed conveyor, powerfeed drum, and other systems		
3-Phase, 480 volt, 60 Hz		
Steel slat infeed conveyor with dual hydraulic drives (66" W x 16' L)		
High torque powerfeed with serrated traction plates and dual hydraulic drives (32" D x 66" W)		
Hydraulic powerfeed shock kit		
Gap-less infeed transition and patented Slab Ramp adjustable shear plane		
Down-cut mill designed for precise particle size and texture control		
Indexable rotor with 28 two-bolt tooth mounts		
Monitoring system		
Hydraulic screen installation system with shear pin protection		
Grinding chamber water injection dust control system		
90 degree discharge conveyor with magnetic head pulley (48" W) and full-length roller-bed collection conveyor (48" W x 28' L)		
3" Forestry baffled square hole screen		
Hardfaced indexable teeth (single hardface overlay per side, 2 bolts)		
Infeed dust hood		
Wireless remote control system		
Cross-belt magnetic conveyor		
Grinder sub-frame lift kit (12" H)		
Cold weather package		

<b>Alternate Bid #1: 500 HP Stationary Wood Grinding Equipment</b>		
Manufacturer: _____	<b>Complies</b>	<b>Does Not Comply</b>
Model #: _____		
500 HP premium efficiency TEFC electric motor with automatic load regulation, motor control center, solid state soft start (900 amp)		
3-Phase, 480 volt, 60 Hz		
90 HP hydraulic system to operate infeed conveyor, powerfeed drum, and other systems		
Hydraulic oil cooler		
Domed slat infeed conveyor with dual hydraulic drives (66" W x 16" L)		
High torque powerfeed with serrated chevron cleats and internal radial piston drive (32" D x 66" W)		
Concentric powerfeed lift with proportional hydraulic pressure system		
Gap-less infeed transition and patented Slab Ramp adjustable shear plane		
Down-cut mill designed for precise particle size and texture control		
Replaceable mount rotor with 28 indexable teeth (42" D x 66" W)		
Hydraulic screen installation system with shear pin protection		
Grinding chamber water injection dust control system		
Digital control system with advanced monitoring and diagnostics		
Wireless remote control system		
90 degree discharge conveyor (48" W) and full-length roller-bed collection conveyor (48" W x 28' L)		
Cross-belt magnetic conveyor		
Magnetic head pulley (12" D x 48" W)		

<b>Alternate Bid #2: 700 HP Stationary Wood Grinding Equipment</b>		
Manufacturer: _____	<b>Complies</b>	<b>Does Not Comply</b>
Model #: _____		
700 HP premium efficiency TEFC electric motor with automatic load regulation, motor control center, solid state soft start (1200 amp)		
3-Phase, 480 volt, 60 Hz		
90 HP hydraulic system to operate infeed conveyor, powerfeed drum, and other systems		
Hydraulic oil cooler		
Domed slat infeed conveyor with dual hydraulic drives (66" W x 16" L)		
High torque powerfeed with serrated chevron cleats and internal radial piston drive (32" D x 66" W)		
Concentric powerfeed lift with proportional hydraulic pressure system		
Gap-less infeed transition and patented Slab Ramp adjustable shear plane		
Down-cut mill designed for precise particle size and texture control		
Replaceable mount rotor with 28 indexable teeth (42" D x 66" W)		
Hydraulic screen installation system with shear pin protection		
Grinding chamber water injection dust control system		
Digital control system with advanced monitoring and diagnostics		
Wireless remote control system		
90 degree discharge conveyor (48" W) and full-length roller-bed collection conveyor (48" W x 28' L)		
Cross-belt magnetic conveyor		
Magnetic head pulley (12" D x 48" W)		



2 WTS SORTING PLATFORM FLOOR PLAN - NEW ELECTRICAL SCALE: 1/8"=1'-0" NORTH



1 WTS NEW TIPPING FLOOR PLAN - NEW ELECTRICAL SCALE: 1/8"=1'-0" NORTH

GENERAL NOTES:

- 1. EG TO RELOCATE AND/OR ADD FIRE ALARM SYSTEM ANNUNCIATION DEVICES AS REQUIRED TO MEET AUDIBLE AND VISUAL REQUIREMENTS OF NFPA 72 AND CITY OF MADISON CODES... 2. EXISTING RELOCATED LIGHT FIXTURES TO BE RECONNECTED TO THE ORIGINAL CIRCUITS... 3. PROVIDE FIVE (5) TYPE X AND TEN (10) TYPE EBU FIXTURES... 4. ALL CEILING MOUNTED FIXTURES, DEVICES, RACEWAYS, BOXES, ETC ABOVE TIPPING FLOOR TO BE A MINIMUM OF 30' AFF.

NEW WORK KEYED NOTES:

- 1. CONNECT NEW LIGHT FIXTURES IN THIS AREA TO NEW CIRCUIT ORIGINATING FROM SPARE 20A/1P BREAKER IN PANEL LPA(X)... 2. CONVENIENCE RECEPTACLES IN THIS AREA TO BE FED FROM SPARE 20A/1P BREAKERS IN PANEL RPA(X)... 3. PROVIDE ONE CAT 6 CABLE, JUNCTION BOX AND RACEWAY FOR EACH VIDEO MONITORING CAMERA... 4. PROVIDE NEW FIRE ALARM SYSTEM MANUAL PULL STATION AS REQUIRED.

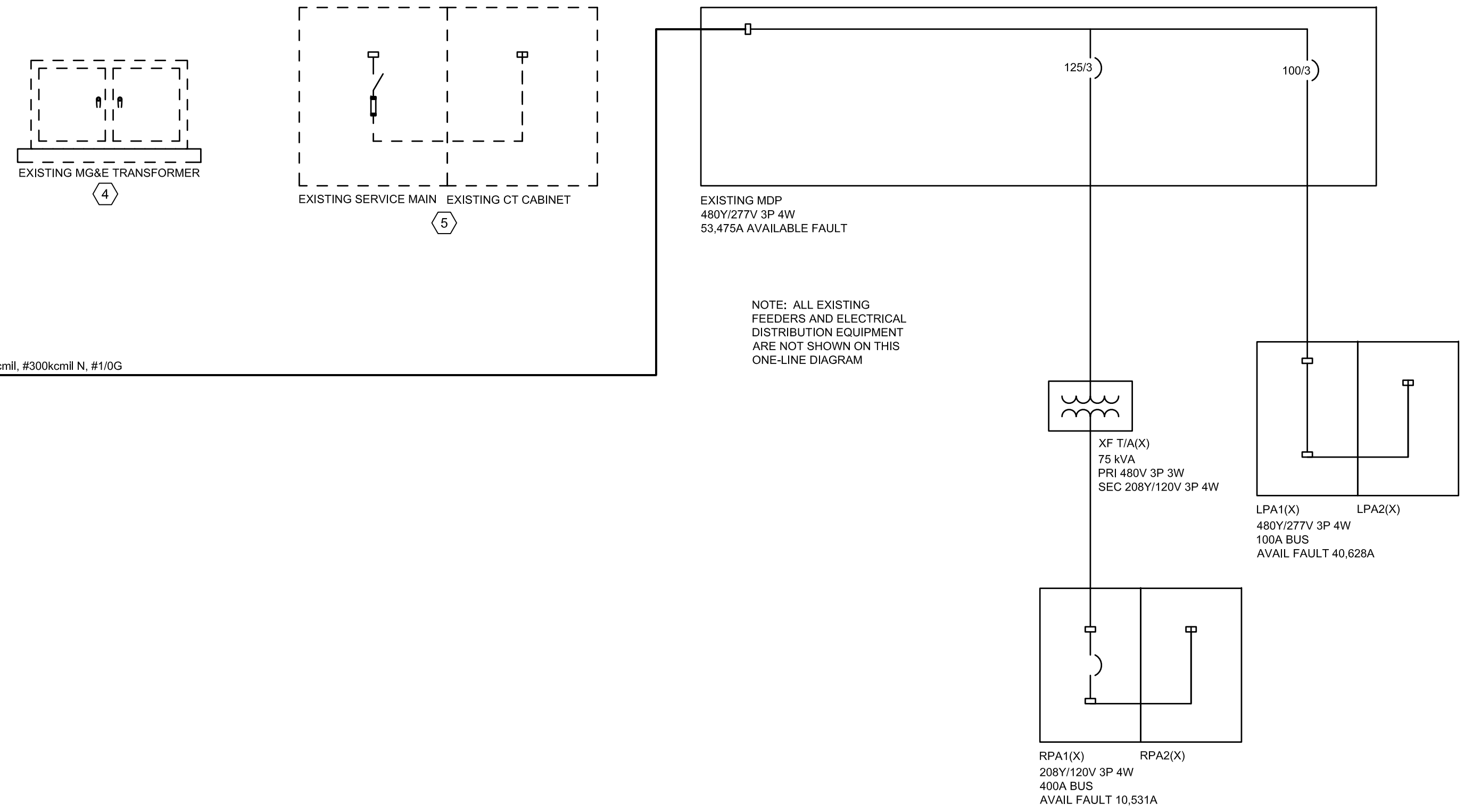
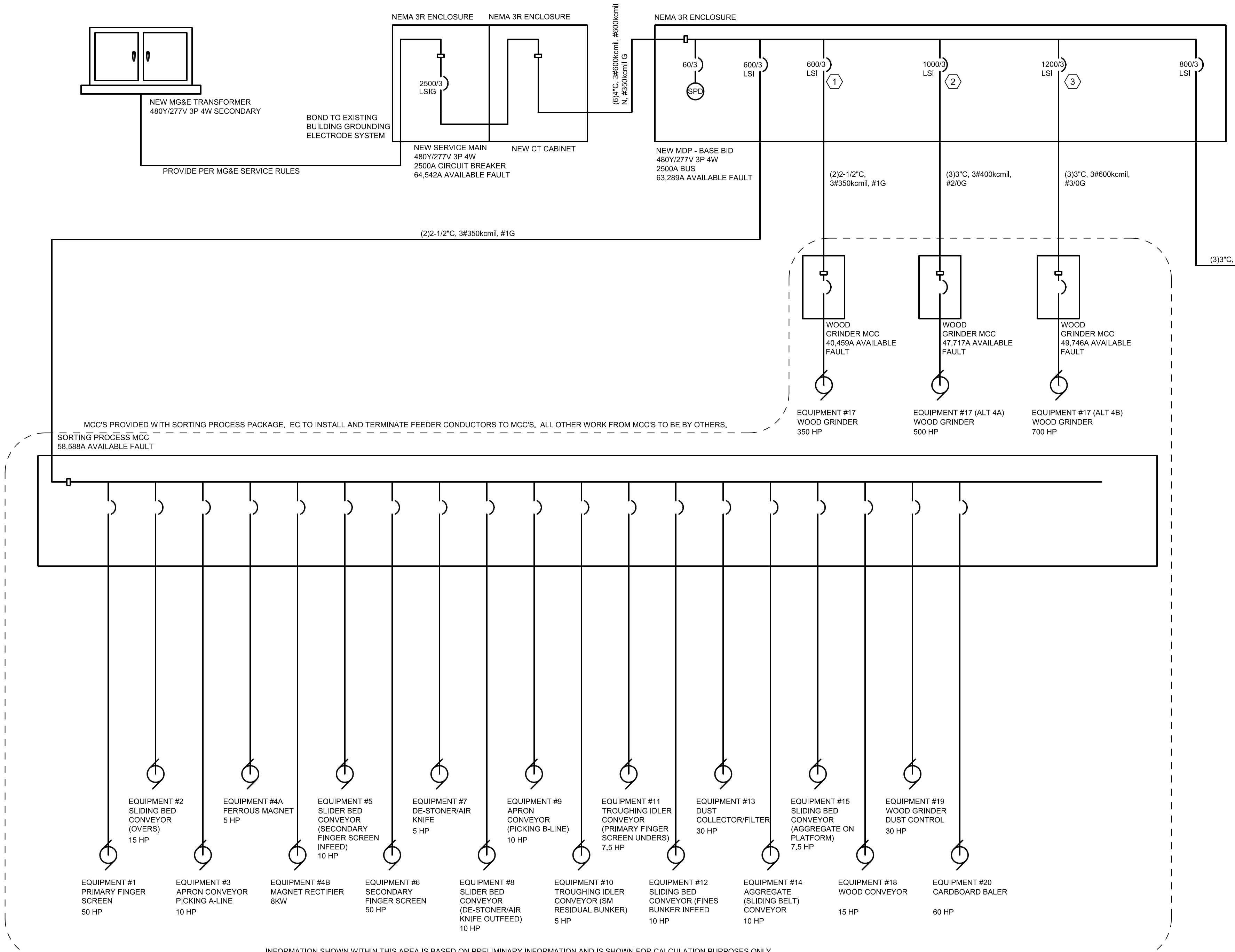
Table with 4 columns: REVISION, DATE, BY, TITLE. Contains multiple empty rows for revisions.

Table with 2 columns: PROJECT NO., DATE. PROJECT NO: 25214236.00, DATE: 04/28/15.

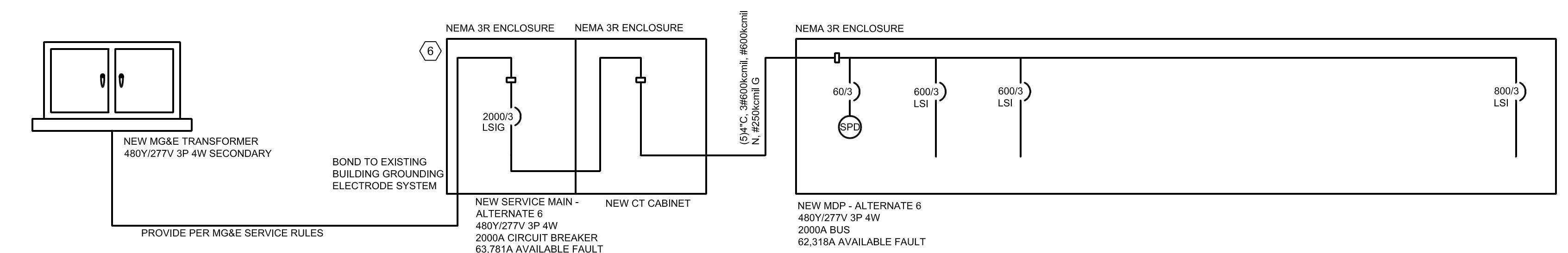
BID DOCUMENTS ISSUED 04/28/15

PARTIAL FLOOR PLANS - ELECTRICAL

SHEET NUMBER E202



1 ONE-LINE DIAGRAM  
SCALE: NONE



2 PARTIAL ONE-LINE DIAGRAM - ALTERNATE 6  
SCALE: NONE

**GENERAL NOTES:**

- 1. DASHED LINES INDICATE EQUIPMENT TO BE REMOVED.
- 2. LIGHTER LINES INDICATE EXISTING EQUIPMENT TO REMAIN.
- 3. HEAVIER LINES INDICATE NEW EQUIPMENT.
- 4. SEE SHEET E800 FOR LOAD SCHEDULES AND PRELIMINARY FAULT CURRENT CALCULATIONS.

**KEYED NOTES:**

- 1. BASE BID TO INCLUDE CIRCUIT BREAKER AND ASSOCIATED WIRING FOR A 350 HP WOOD GRINDER.
- 2. ALTERNATE BID 4A TO INCLUDE CIRCUIT BREAKER AND ASSOCIATED WIRING FOR A 500 HP WOOD GRINDER IN LIEU OF THE 350 HP WOOD GRINDER.
- 3. ALTERNATE BID 4B TO INCLUDE CIRCUIT BREAKER AND ASSOCIATED WIRING FOR A 700 HP WOOD GRINDER IN LIEU OF THE 350 HP WOOD GRINDER.
- 4. EXISTING UTILITY TRANSFORMER TO BE REMOVED BY MG&E. EC TO REMOVE TRANSFORMER PAD.
- 5. EXISTING EXTERIOR SWITCHGEAR AND ASSOCIATED EQUIPMENT PAD TO BE REMOVED BY EC.
- 6. ALTERNATE BID 6 TO INCLUDE 2000 AMP SERVICE EQUIPMENT AND FEEDERS AS INDICATED IN DETAIL 2/E600 IN LIEU OF 2500 AMP SERVICE EQUIPMENT.

REVISION	DATE	BY	TITLE

PROJECT NO.	25214236.00
DRAWN:	04/28/15
REVISED:	04/28/15
DRAWN BY:	JDR
CHECKED BY:	JDR
APPROVED BY:	

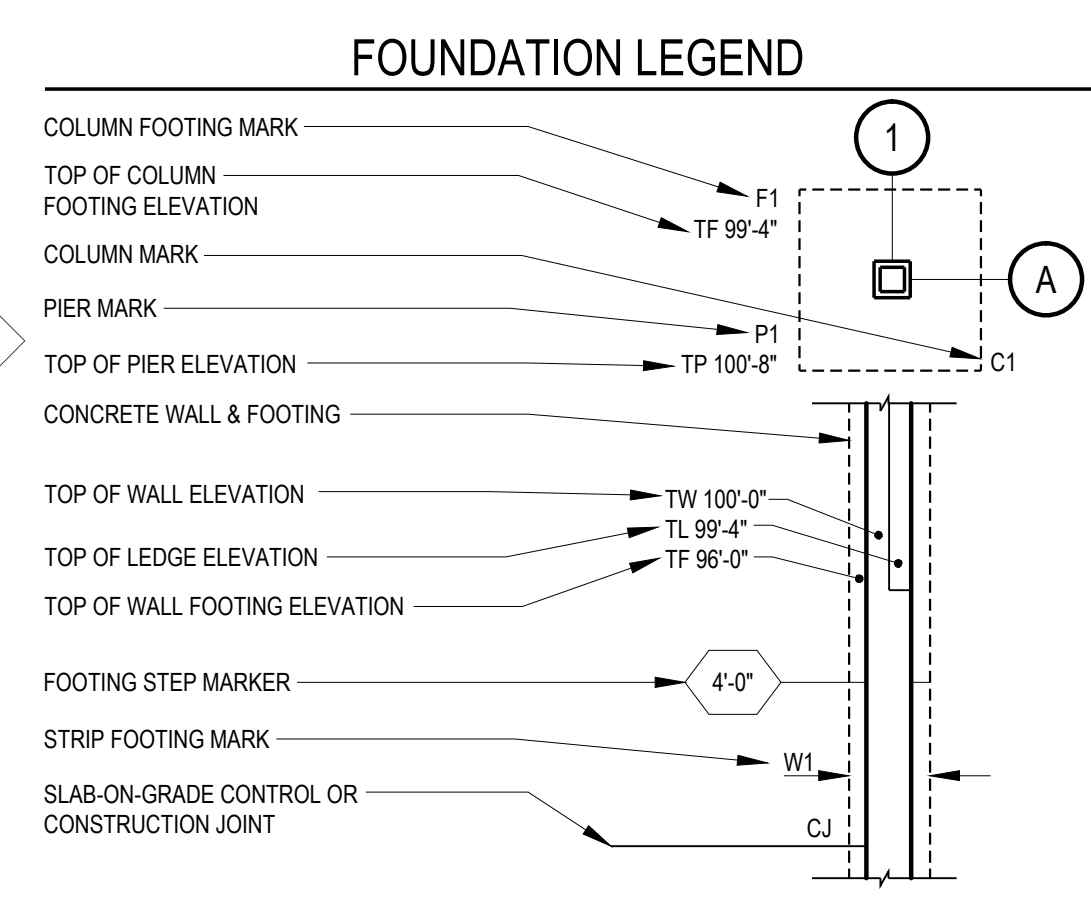
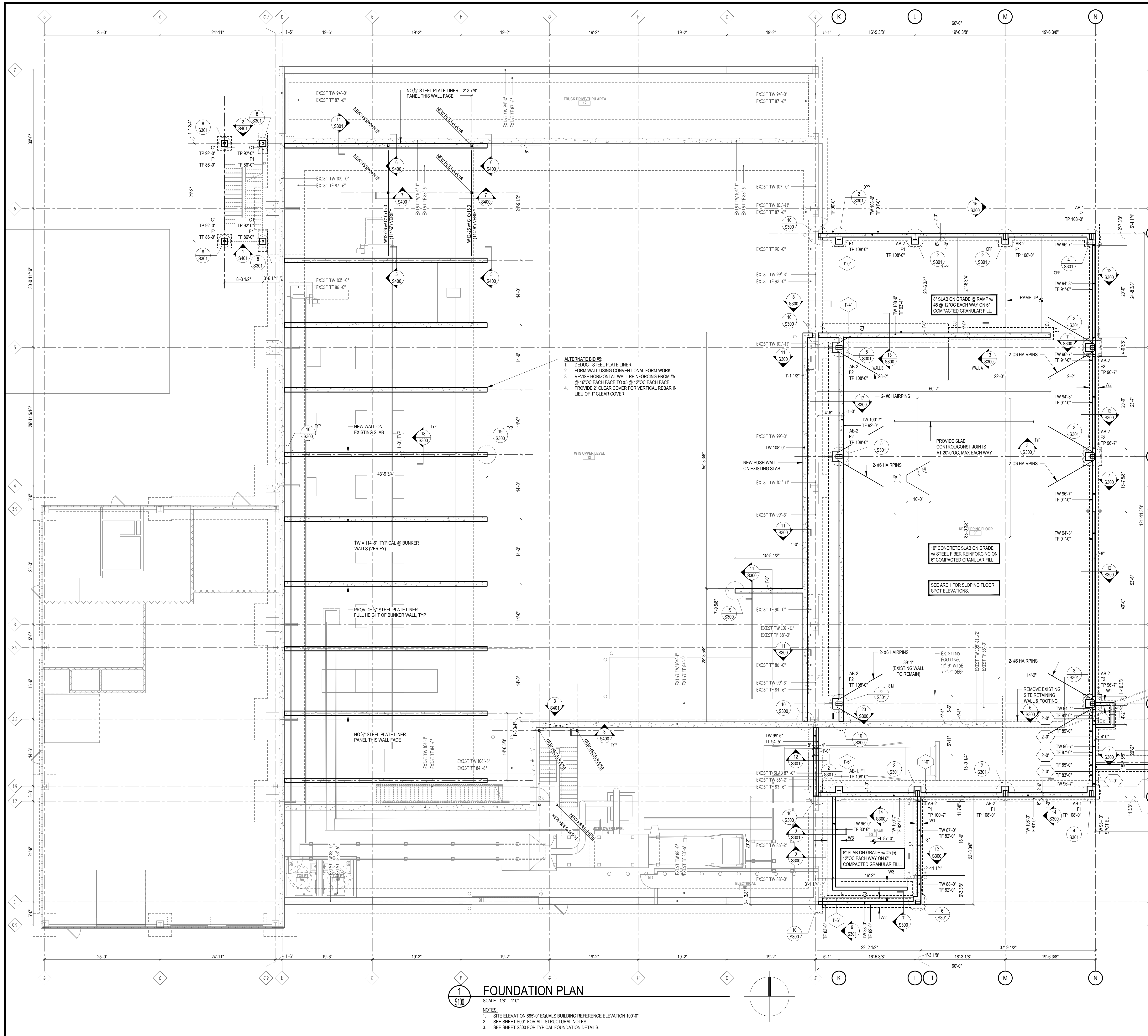
**BID DOCUMENTS  
ISSUED 04/28/15**

**ONE-LINE DIAGRAM  
ELECTRICAL**

SHEET NUMBER  
**E600**







### FOOTING SCHEDULE

MARK	WIDTH	LENGTH	DEPTH	REINFORCEMENT	REMARKS
F1	3'-0"	3'-0"	14"	NONE	
F2	4'-0"	4'-0"	12"	5-#4 EW	
F3	6'-0"	6'-0"	16"	10-#4 EW	
F4	2'-0"	4'-6"	14"	4-#4 LW	
W1	1'-4"	CONT.	1'-0"	NONE	
W2	2'-0"	CONT.	1'-0"	2-#5 x CONT	
W3	3'-0"	CONT.	1'-0"	3-#5 x CONT	

FOOTING SCHEDULE NOTES:  
 1. LW = LONG WAY  
 2. EW = EACH WAY  
 3. B = BOTTOM  
 4. SW = SHORT WAY  
 5. T = TOP  
 6. CONT. = CONTINUOUS

### PRE-ENGINEERED METAL BUILDING ANCHOR BOLT SCHEDULE

MARK	QTY	DIA	LENGTH	PROJECTION
AB-1	4	1/2"	12" (9" EMBEDMENT)	3"
AB-2	4	3/4"	24" (21" EMBEDMENT)	3"

ANCHOR BOLT SCHEDULE NOTES:  
 1. SEE METAL BUILDING PLANS FOR ANCHOR BOLT SETTING PATTERN.  
 2. ALL ANCHOR BOLTS TO BE CLEAN FROM ALL SUBSTANCES WHICH COULD INHIBIT FULL BONDING w/CONCRETE.

- ALTERNATE BID #5:
1. DEDUCT STEEL PLATE LINER.
  2. FORM WALL USING CONVENTIONAL FORM WORK.
  3. REVERSE HORIZONTAL WALL REINFORCING FROM #5 @ 16"OC EACH FACE TO #5 @ 12"OC EACH FACE.
  4. PROVIDE 2" CLEAR COVER FOR VERTICAL REBAR IN LIEU OF 1" CLEAR COVER.

## FOUNDATION PLAN

SCALE: 1/8" = 1'-0"

- NOTES:
1. SITE ELEVATION 885'-0" EQUALS BUILDING REFERENCE ELEVATION 100'-0".
  2. SEE SHEET S301 FOR ALL STRUCTURAL NOTES.
  3. SEE SHEET S300 FOR TYPICAL FOUNDATION DETAILS.

**SCS ENGINEERS**

2830 DAIRY DRIVE MADISON, WI 53718-6751  
 PHONE: (608) 224-2830

**CONSTRUCTION AND DEMOLITION WASTE RECYCLING FACILITY**  
 702 US HWY 12/18  
 MADISON, WISCONSIN

DANE COUNTY DEPARTMENT OF PUBLIC WORKS  
 SOLID WASTE DIVISION  
 1919 ALLIANT ENERGY CENTER WAY  
 MADISON, WI 53713

PROJECT AND CIVIL ENGINEER:  
 SCS ENGINEERS  
 2830 DAIRY DRIVE  
 MADISON, WI 53718-6751  
 (608) 224-2830

ARCHITECT:  
 DORSCHNER ASSOCIATES, INC.  
 849 E WASHINGTON AVE., SUITE 112  
 MADISON, WI 53703

STRUCTURAL ENGINEER:  
 PIERCE ENGINEERS, INC.  
 10 WEST MIFFLIN ST., SUITE 205  
 MADISON, WI 53703

MECHANICAL, ELECTRICAL, PLUMBING DESIGN:  
 JDR ENGINEERING, INC.  
 5525 NOBEL DRIVE, SUITE 110  
 MADISON, WI 53711



PIERCE ENGINEERS INC.  
 22 WEST MITCHELL STREET, SUITE 205  
 MADISON, WI 53703  
 Phone: (608) 224-2941 Fax: (608) 224-2906  
 PE PROJECT 1-5080

REVISION	DATE	BY	TITLE

PROJECT NO.: 25214236.00  
 DRAWN: 04/28/15  
 REVISED:  
 DRAWN BY: PE  
 CHECKED BY: PE  
 APPROVED BY:

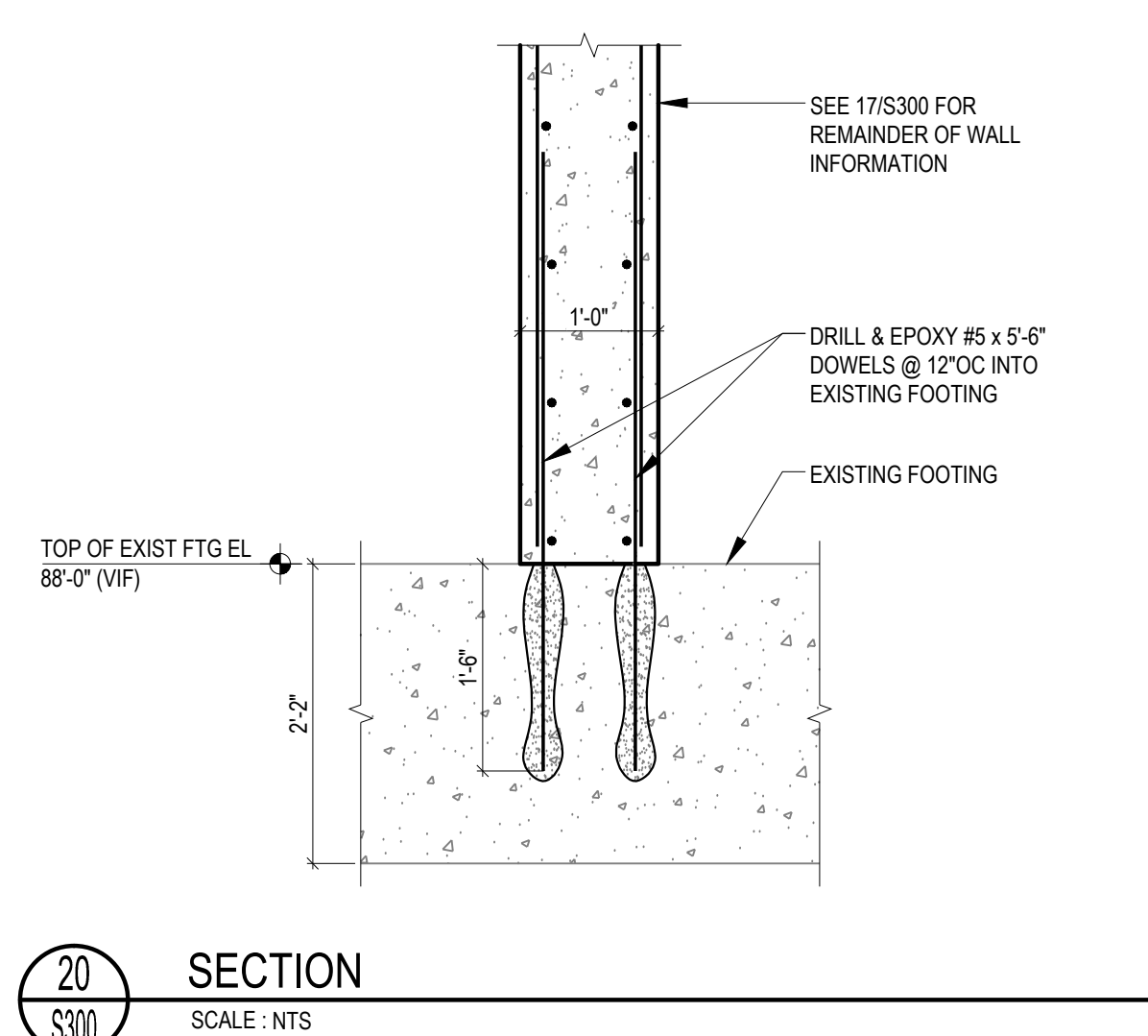
**BID DOCUMENTS**  
**ISSUED 04/28/15**

**FOUNDATION PLAN**

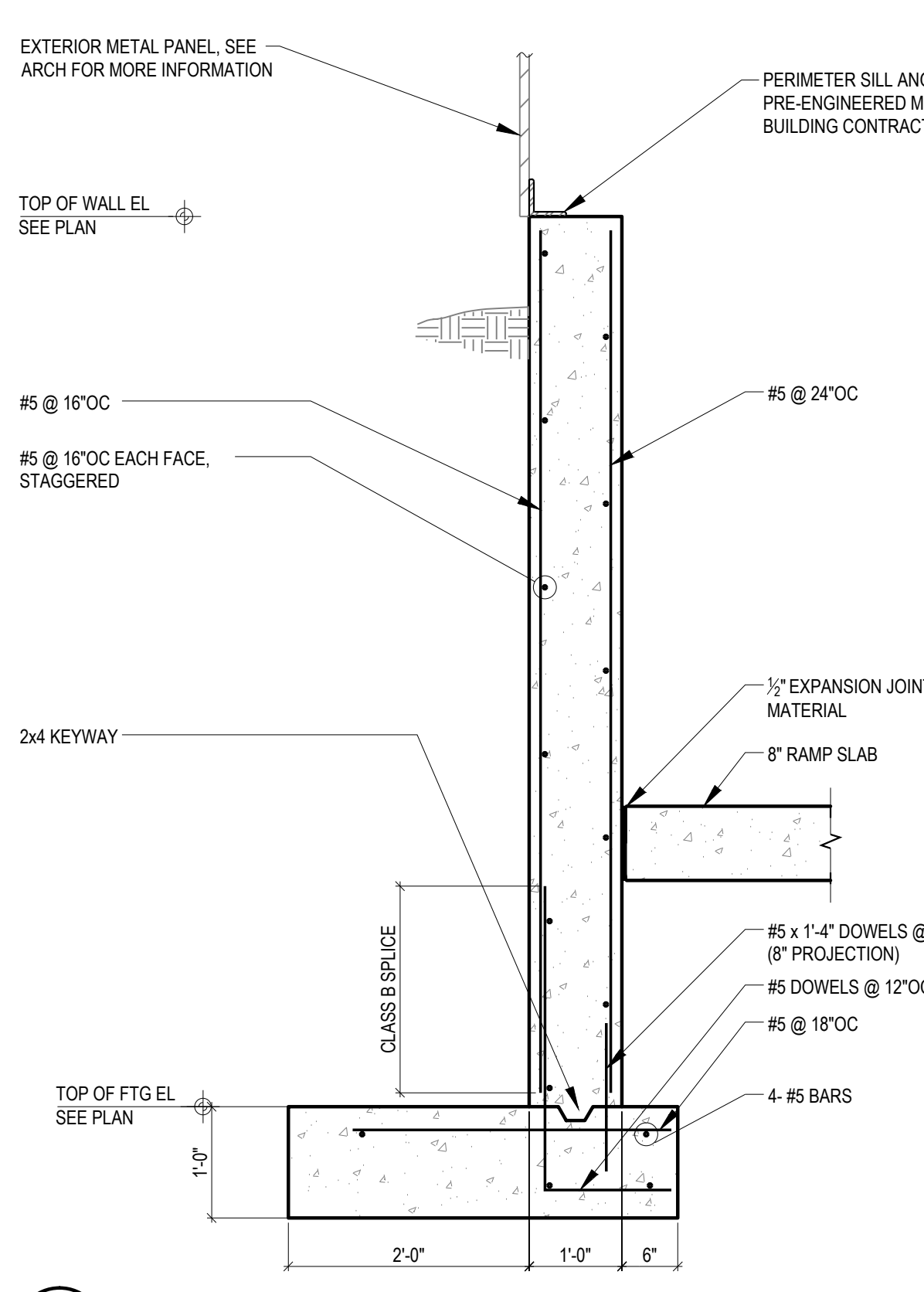
SHEET NUMBER  
**9100**

NOTE: CONCRETE CONTRACTOR TO VERIFY PRE-ENGINEERED METAL BUILDING COLUMN PIERS AND ANCHOR BOLT SETTING PATTERN w/ PRE-ENGINEERED METAL BUILDING CONTRACTOR.

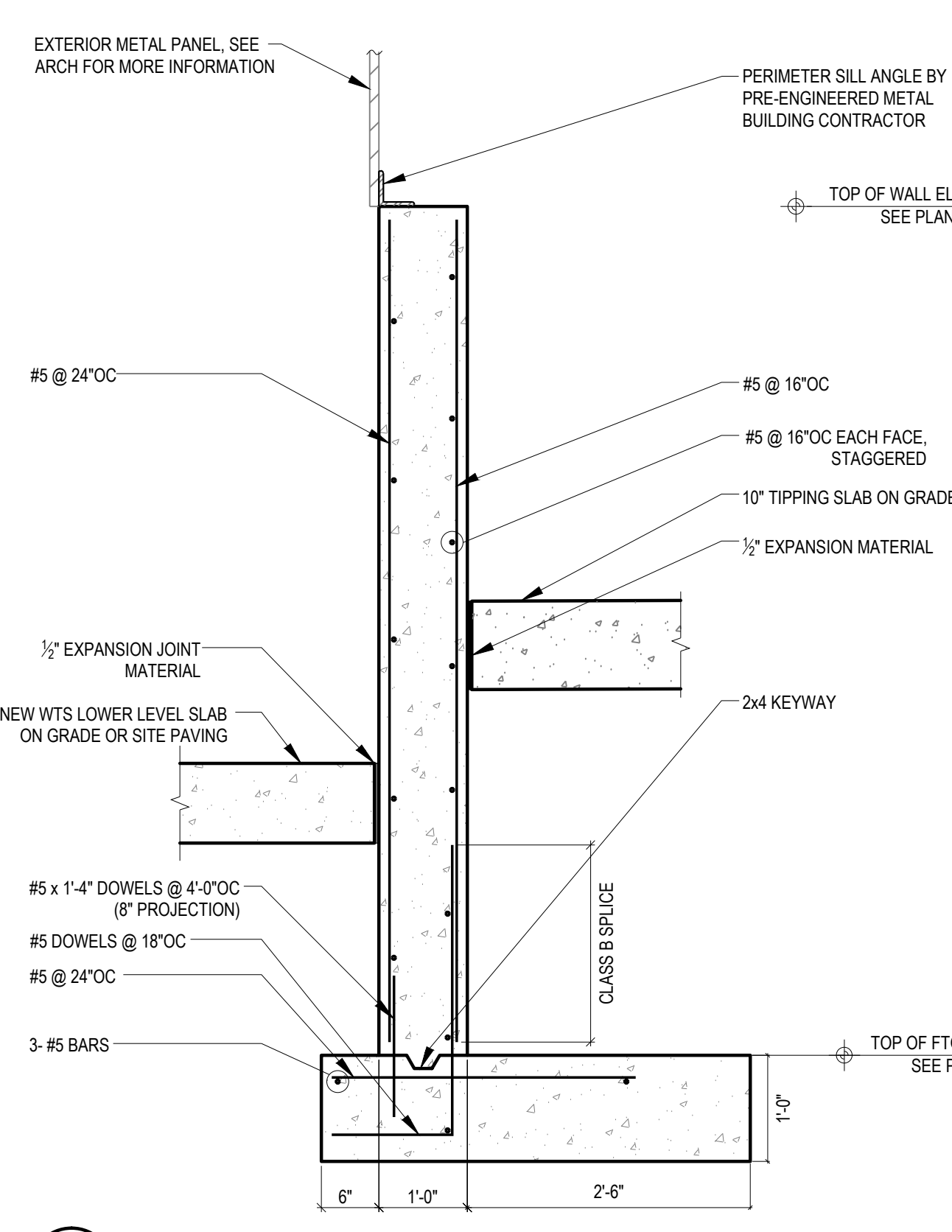
FIELD VERIFY ALL EXISTING CONDITIONS AS REQUIRED PRIOR TO DEMOLITION. REPORT DISCREPANCIES BETWEEN EXISTING CONDITIONS AND INFORMATION NOTED ON THE STRUCTURAL DRAWINGS TO THE STRUCTURAL ENGINEER FOR EVALUATION.



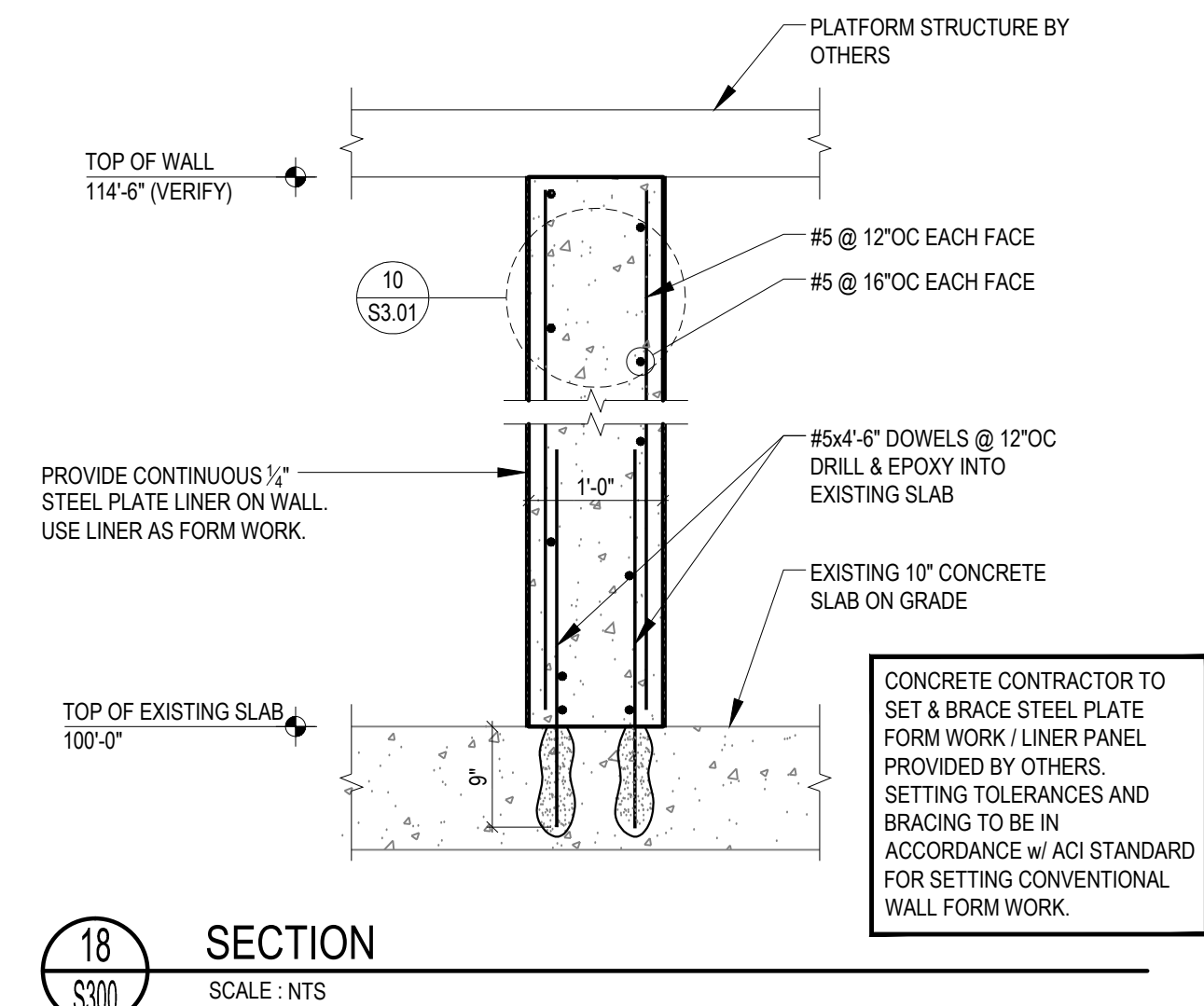
19 DETAIL  
SCALE: NTS



20 SECTION  
SCALE: NTS



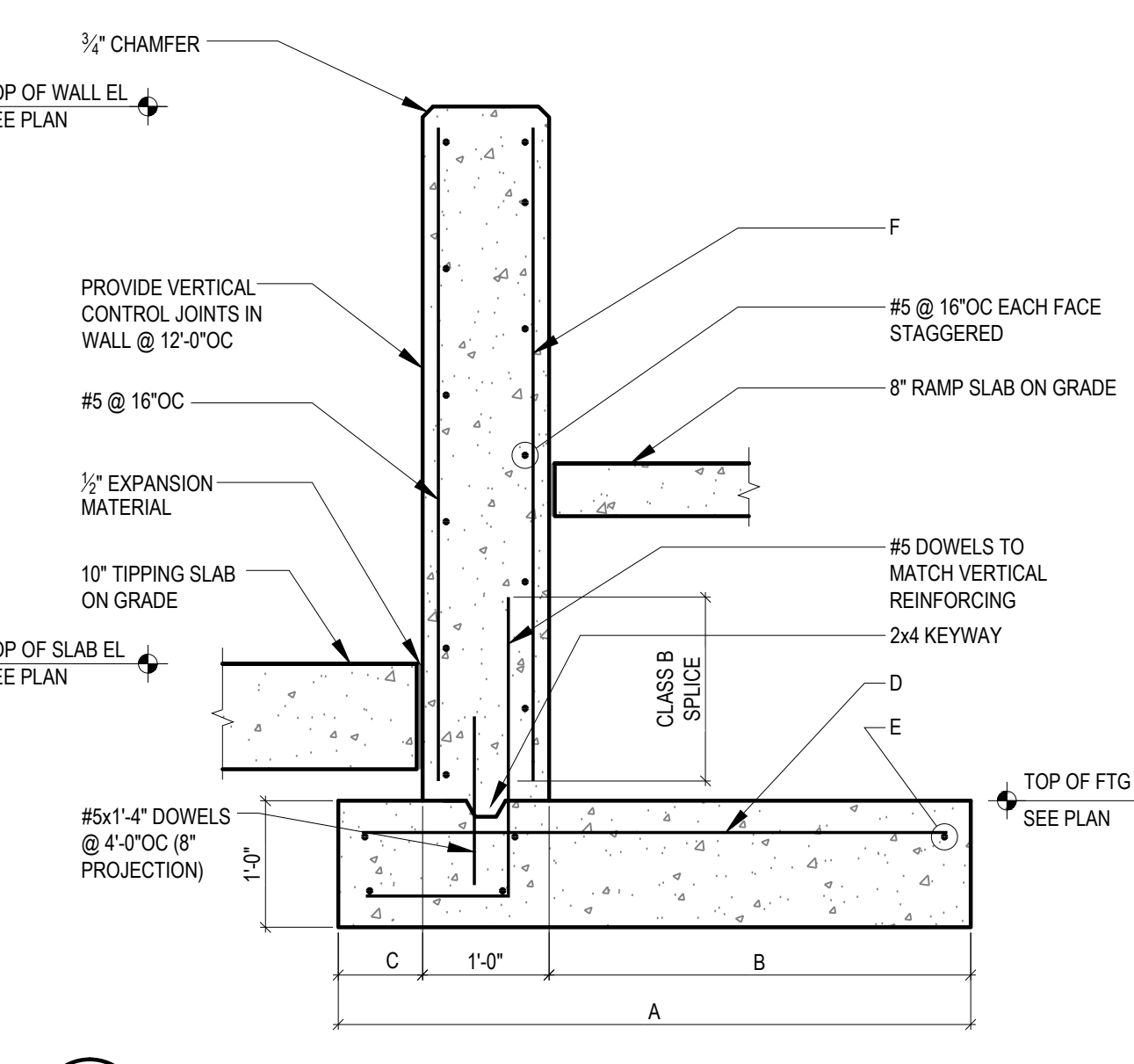
15 SECTION  
SCALE: NTS



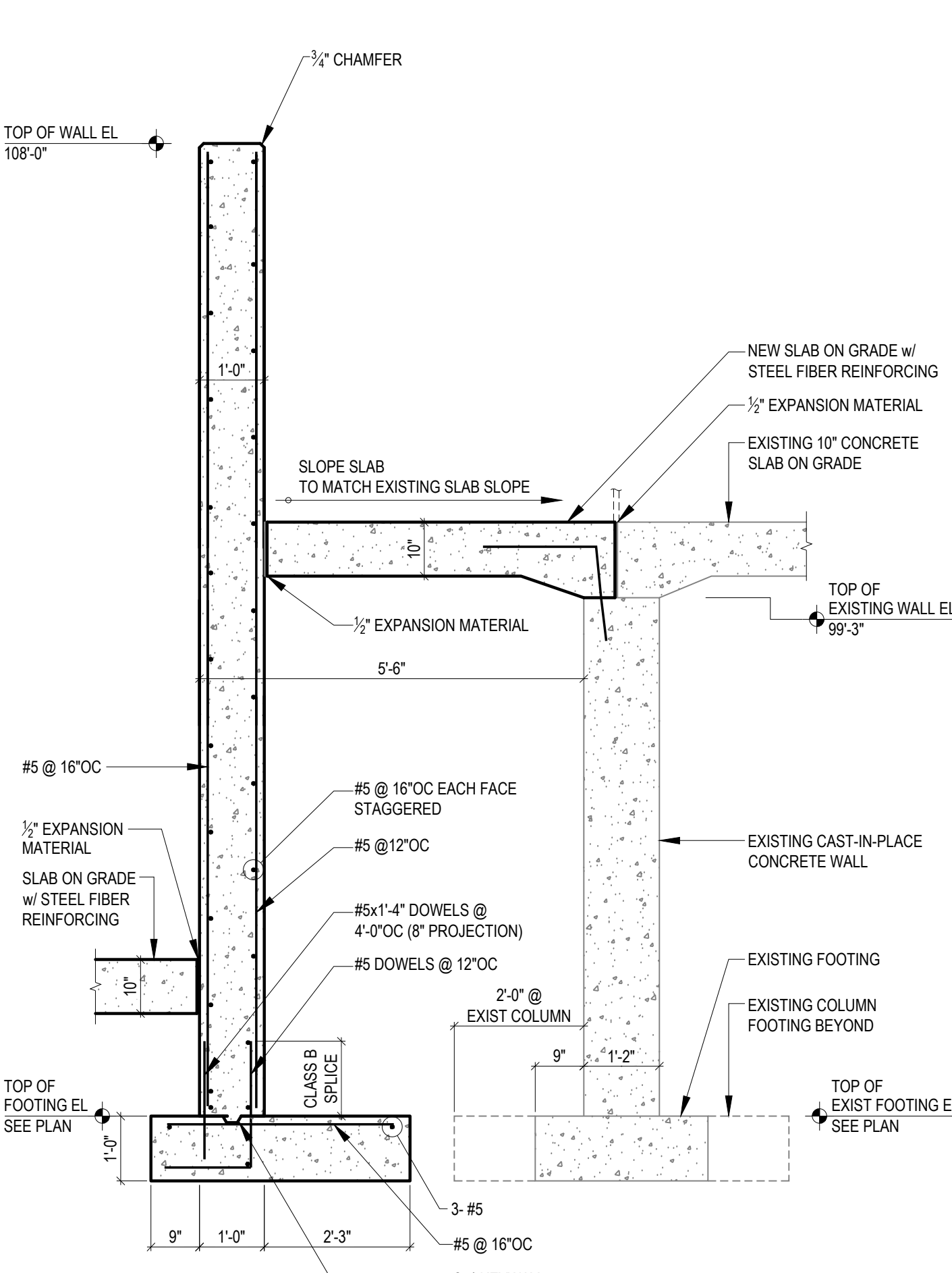
18 SECTION  
SCALE: NTS

RETAINING WALL SCHEDULE

MARK	WALL DIMENSIONS			REINFORCEMENT		
	A	B	C	D	E	F
WALL C	2'-6"	1'-0"	0'-6"	NONE	3-#5	#5 @ 16" OC
WALL D	3'-6"	2'-0"	0'-6"	#5 @ 18" OC	3-#5	#5 @ 12" OC



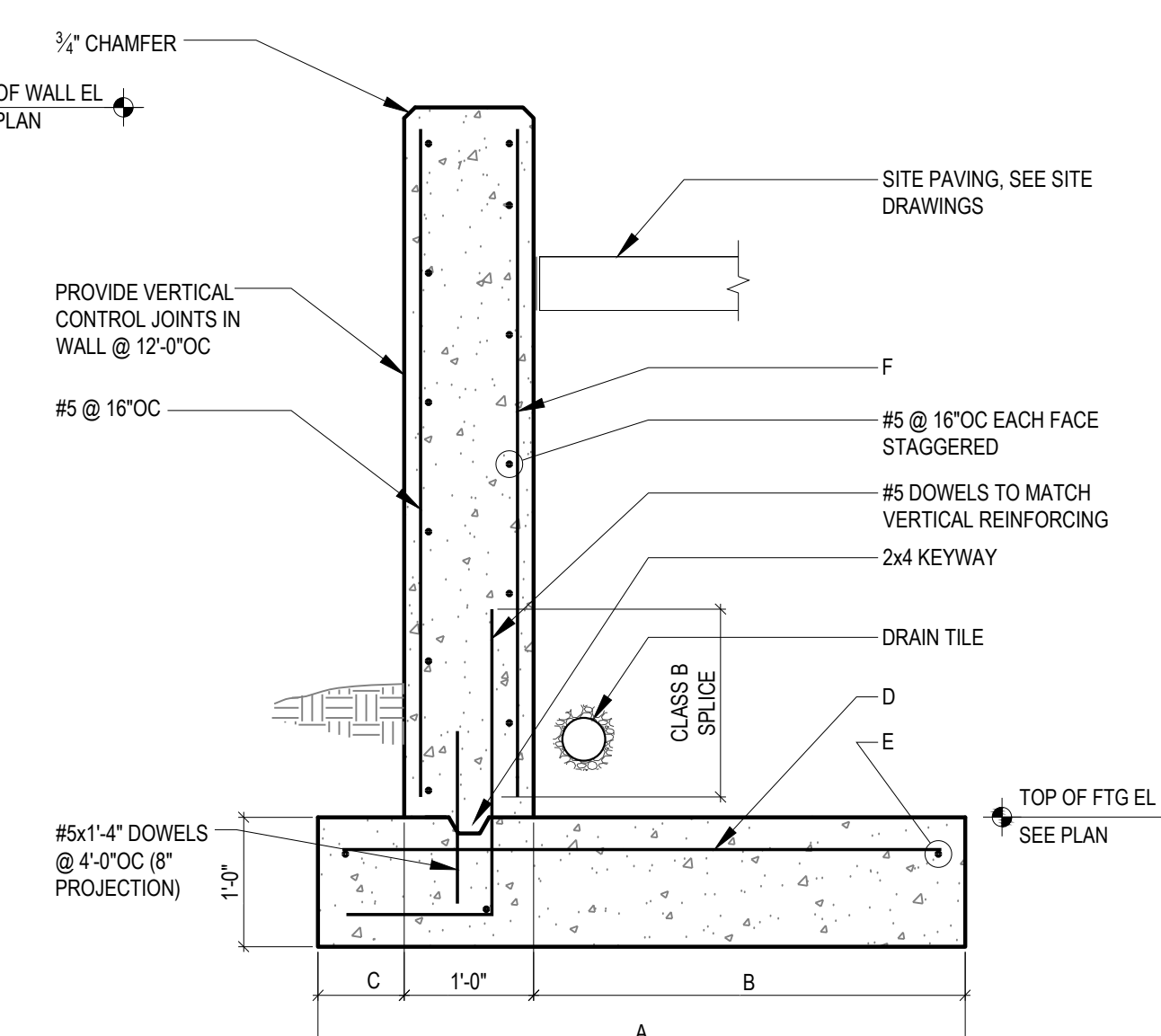
17 SECTION @ DOOR  
SCALE: NTS



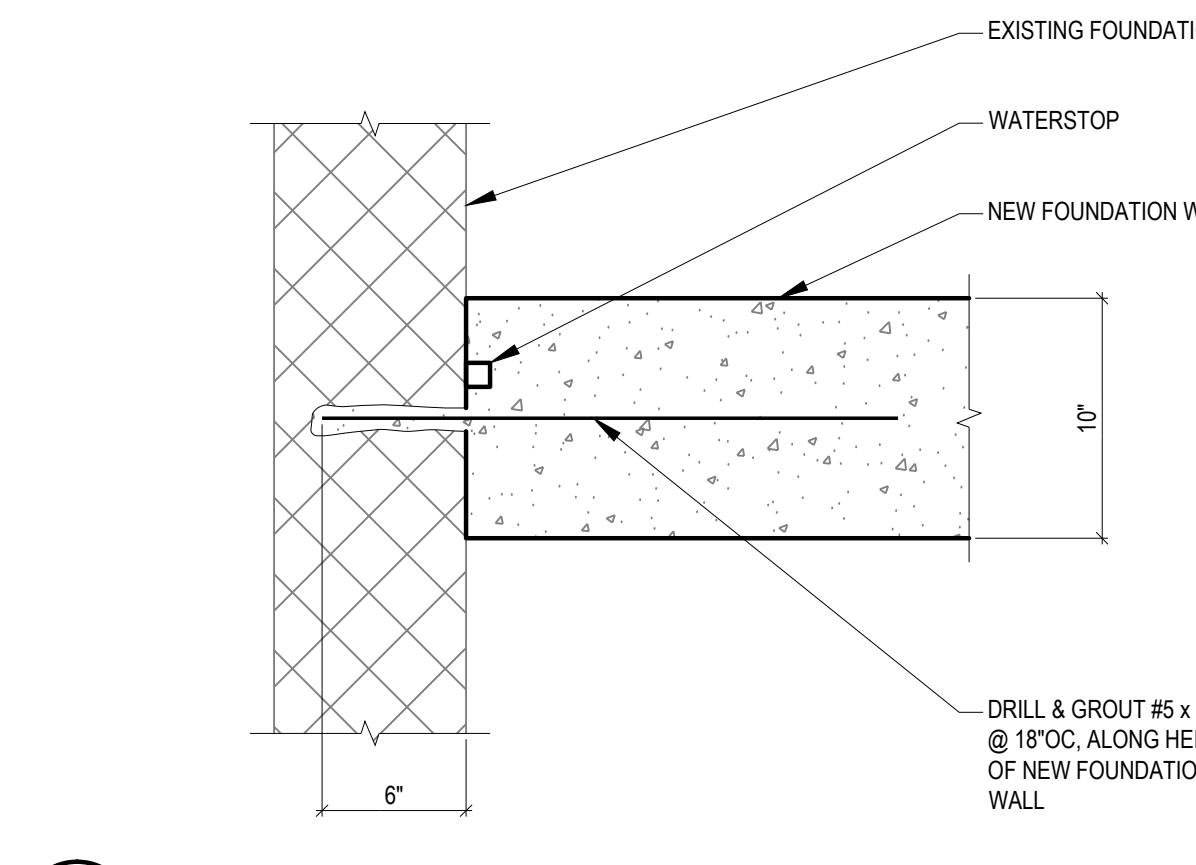
16 SECTION  
SCALE: NTS

RETAINING WALL SCHEDULE

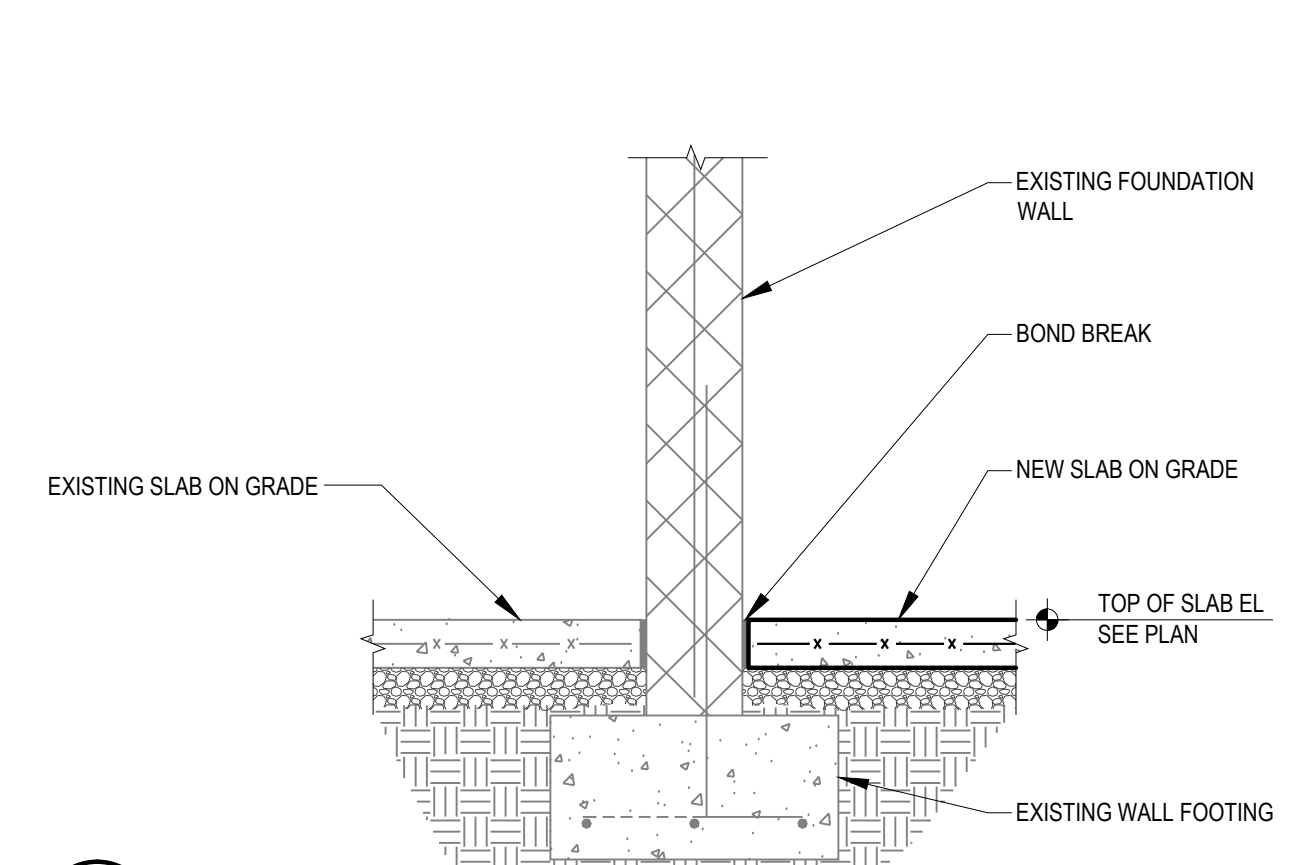
MARK	WALL DIMENSIONS			REINFORCEMENT		
	A	B	C	D	E	F
WALL C	2'-6"	1'-0"	0'-6"	NONE	3-#5	#5 @ 16" OC
WALL D	3'-6"	2'-0"	0'-6"	#5 @ 18" OC	3-#5	#5 @ 12" OC



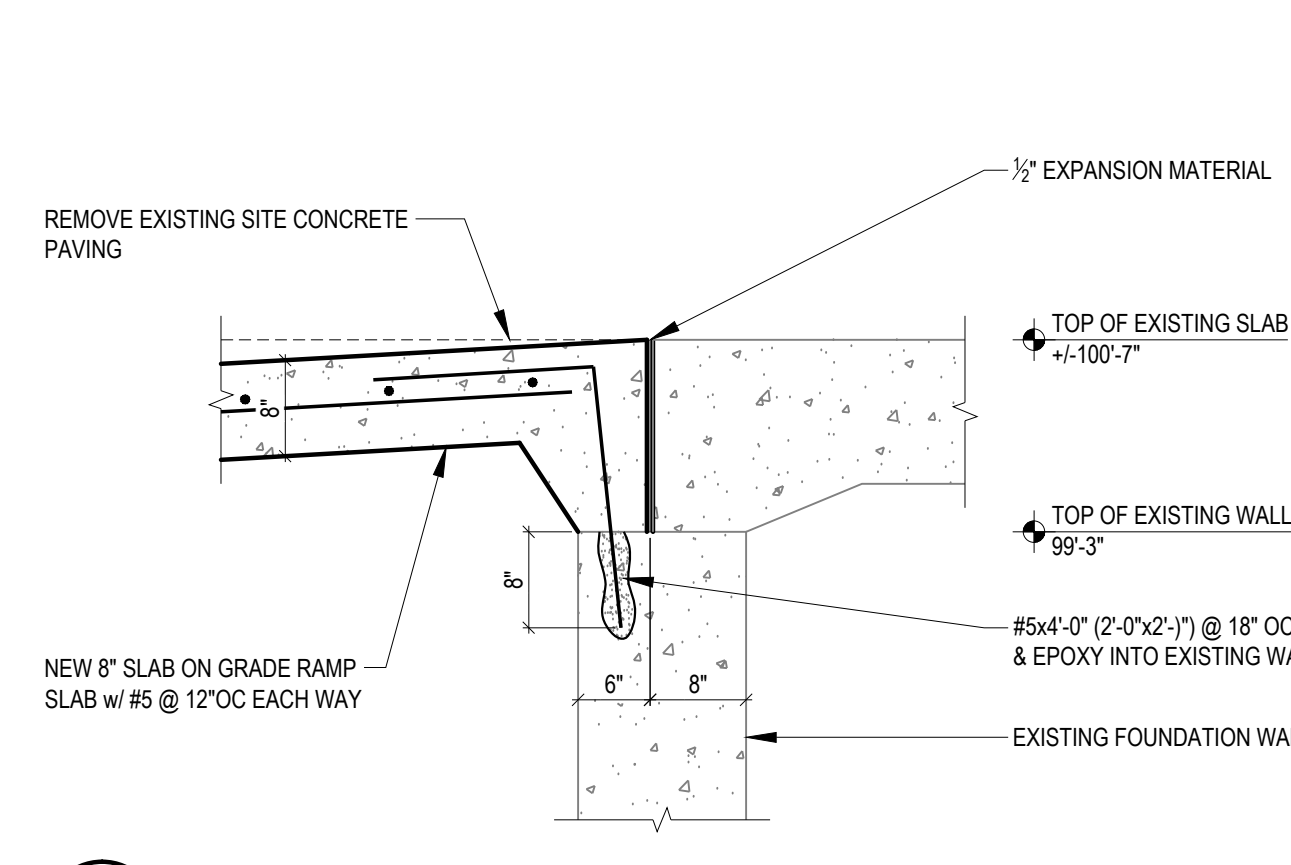
14 SECTION  
SCALE: NTS



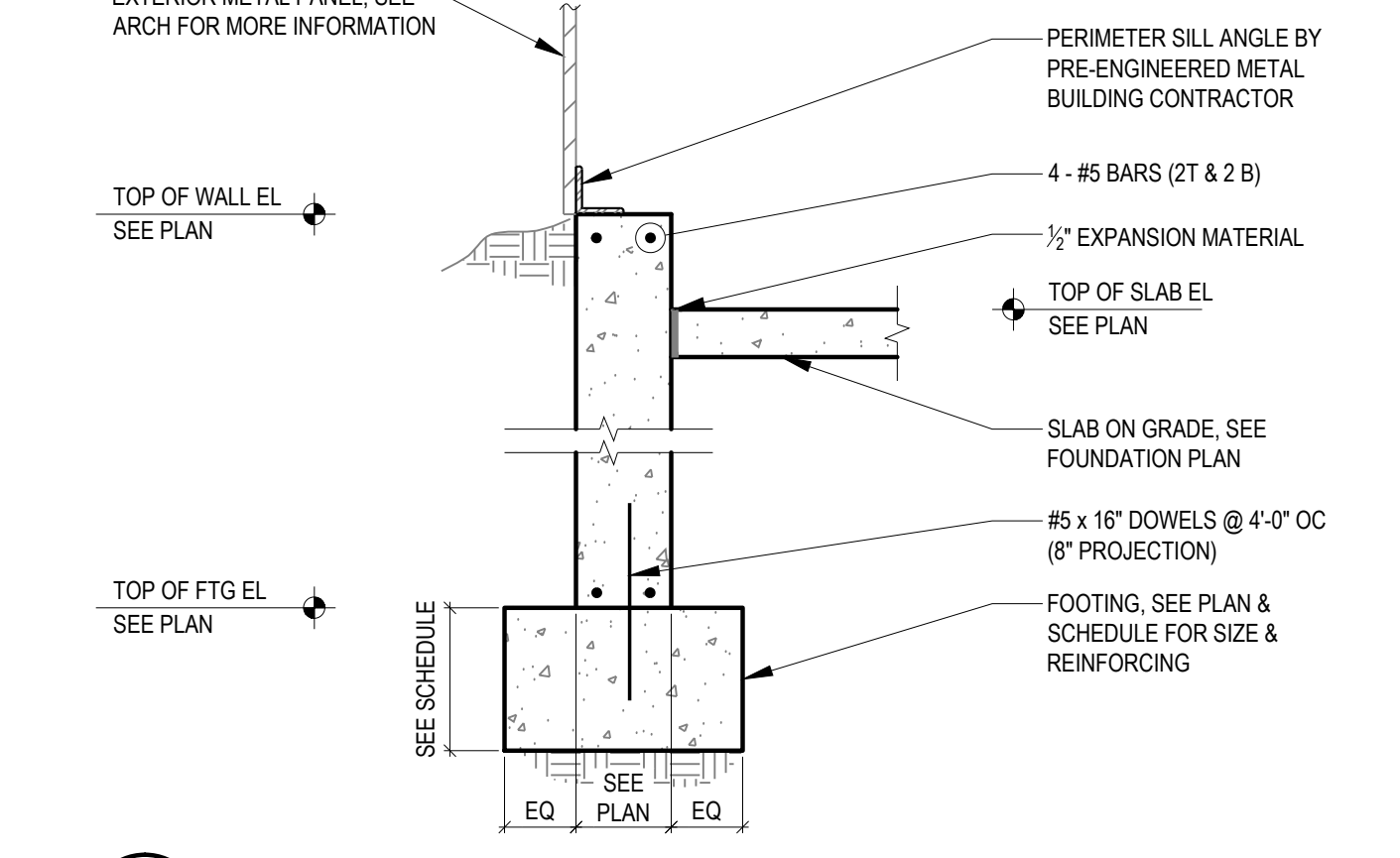
10 DETAIL  
SCALE: NTS



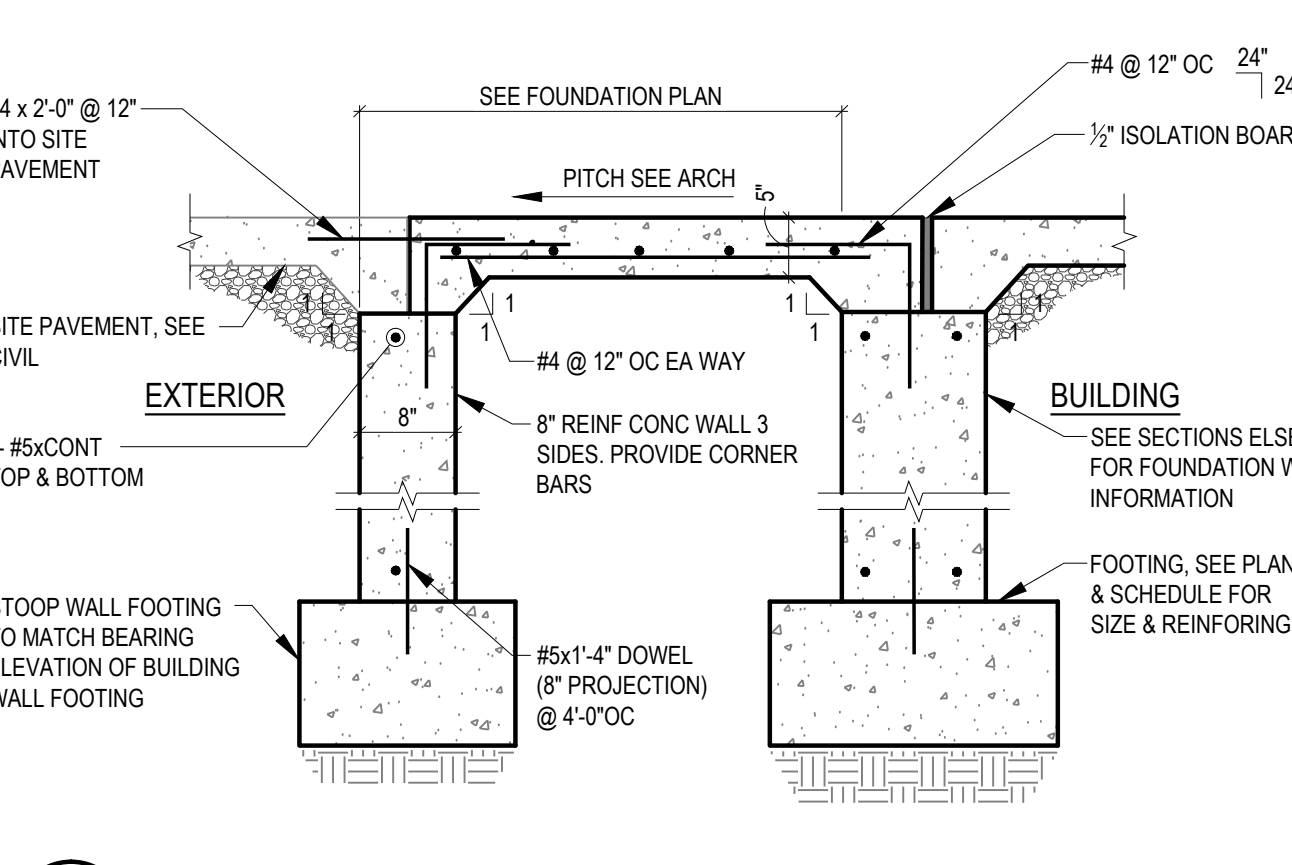
9 SECTION  
SCALE: NTS



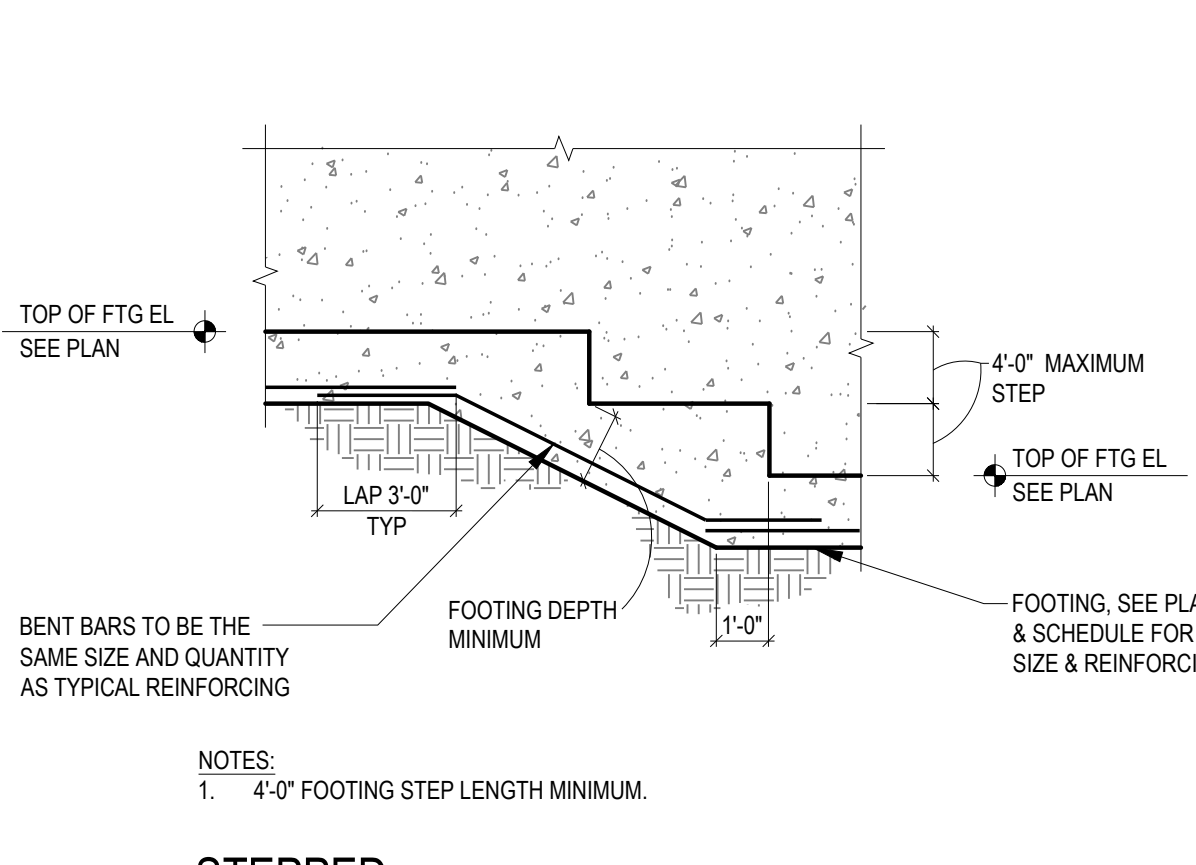
8 SECTION  
SCALE: NTS



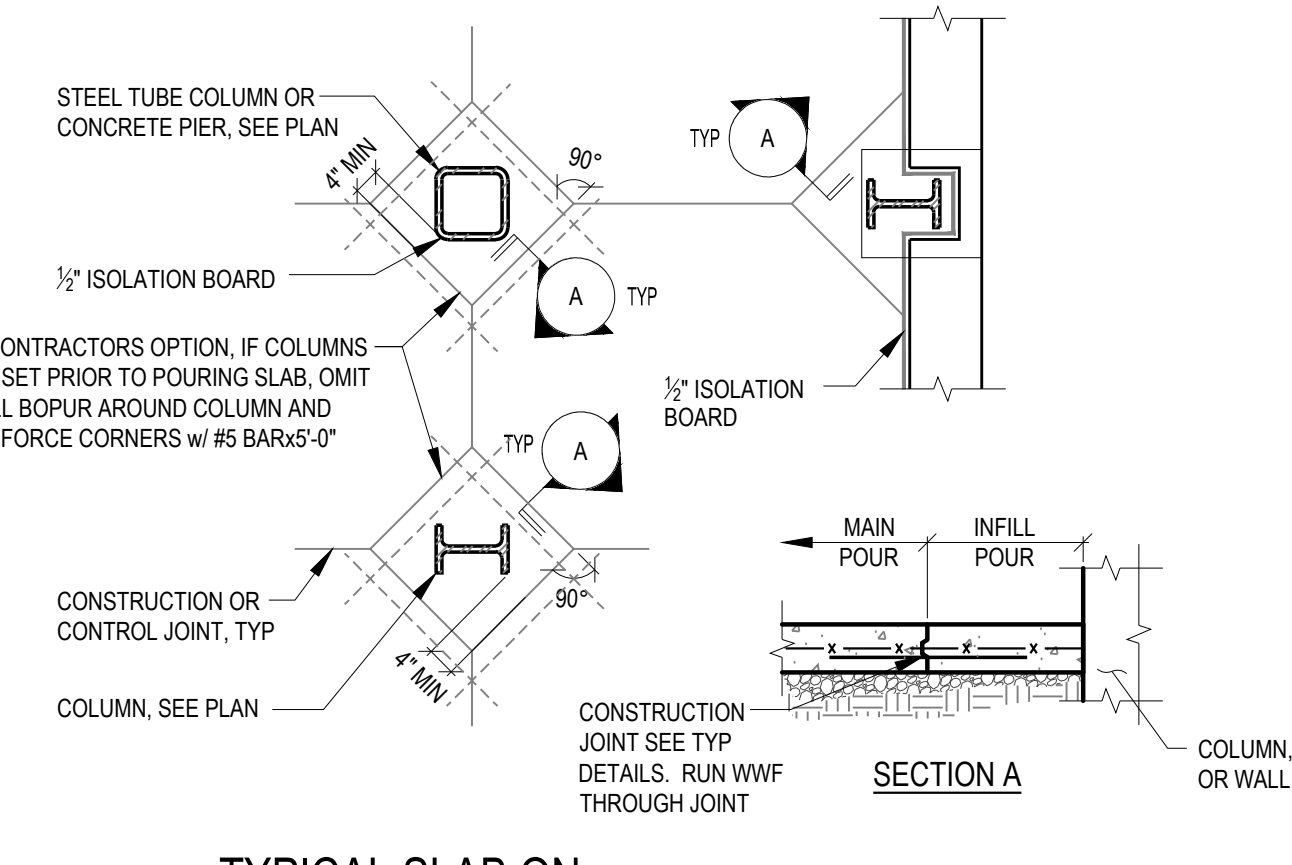
7 EXTERIOR FOUNDATION WALL  
SCALE: NTS



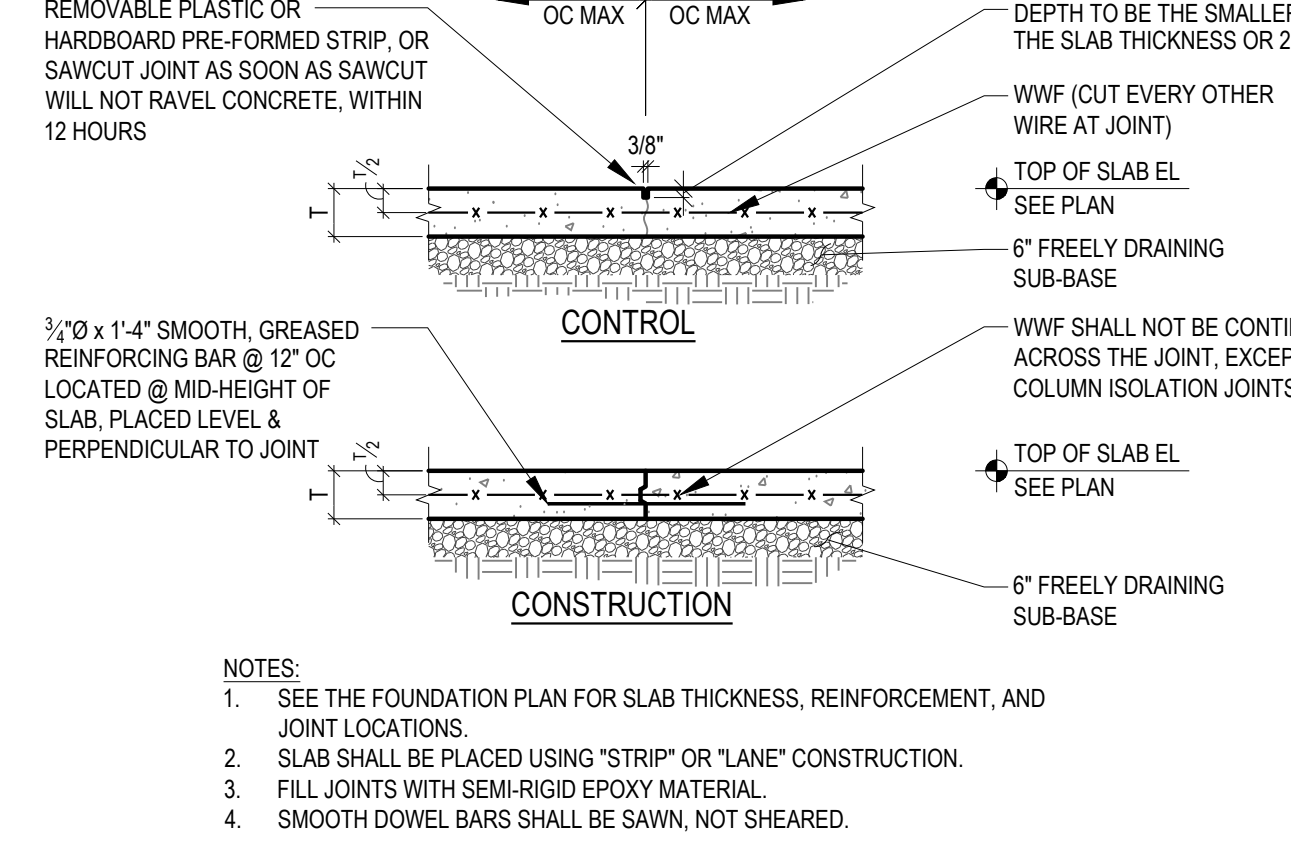
6 TYPICAL STOOP SECTION  
SCALE: NTS



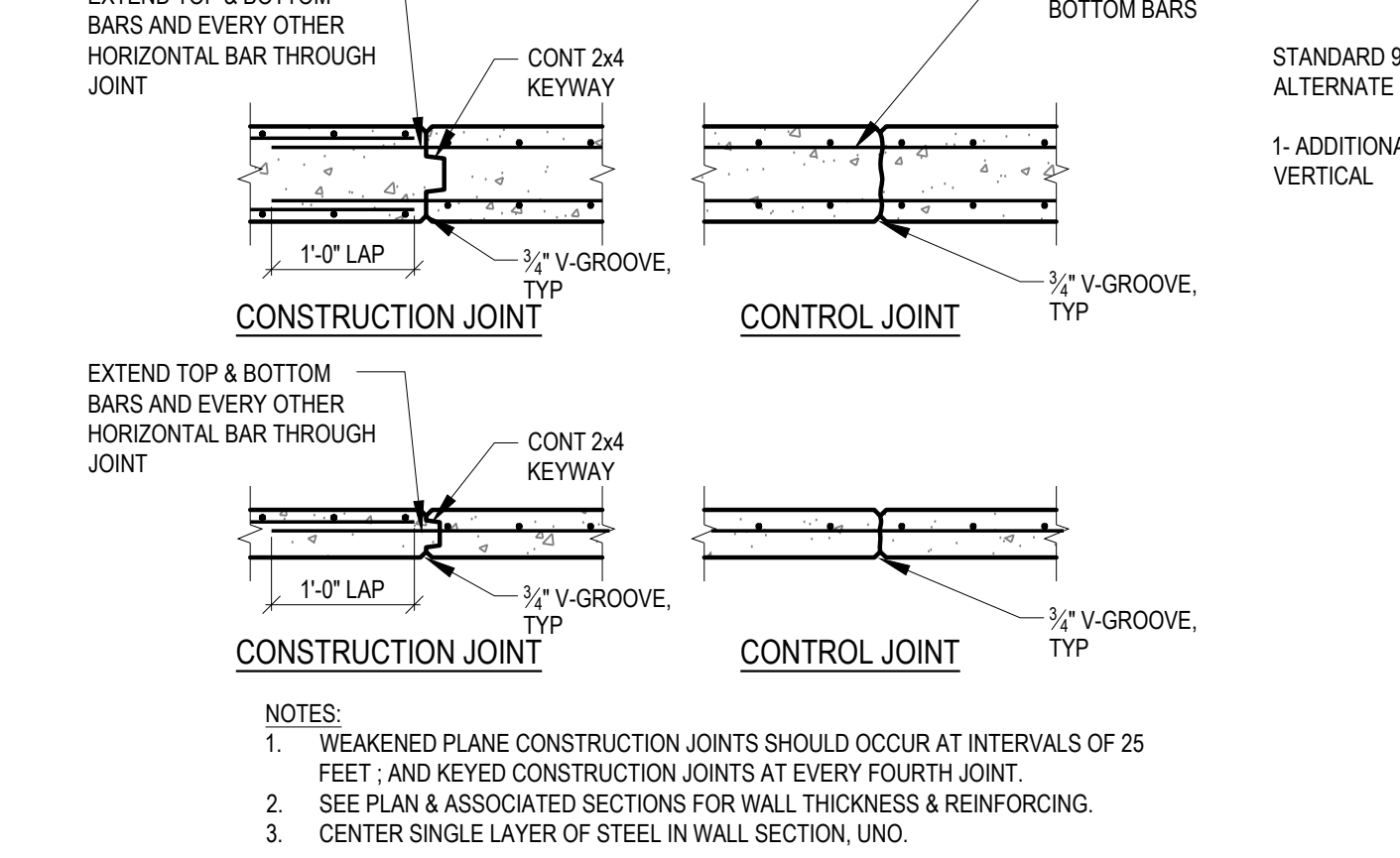
5 STEPPED FOOTING @ CONCRETE WALL  
SCALE: NTS



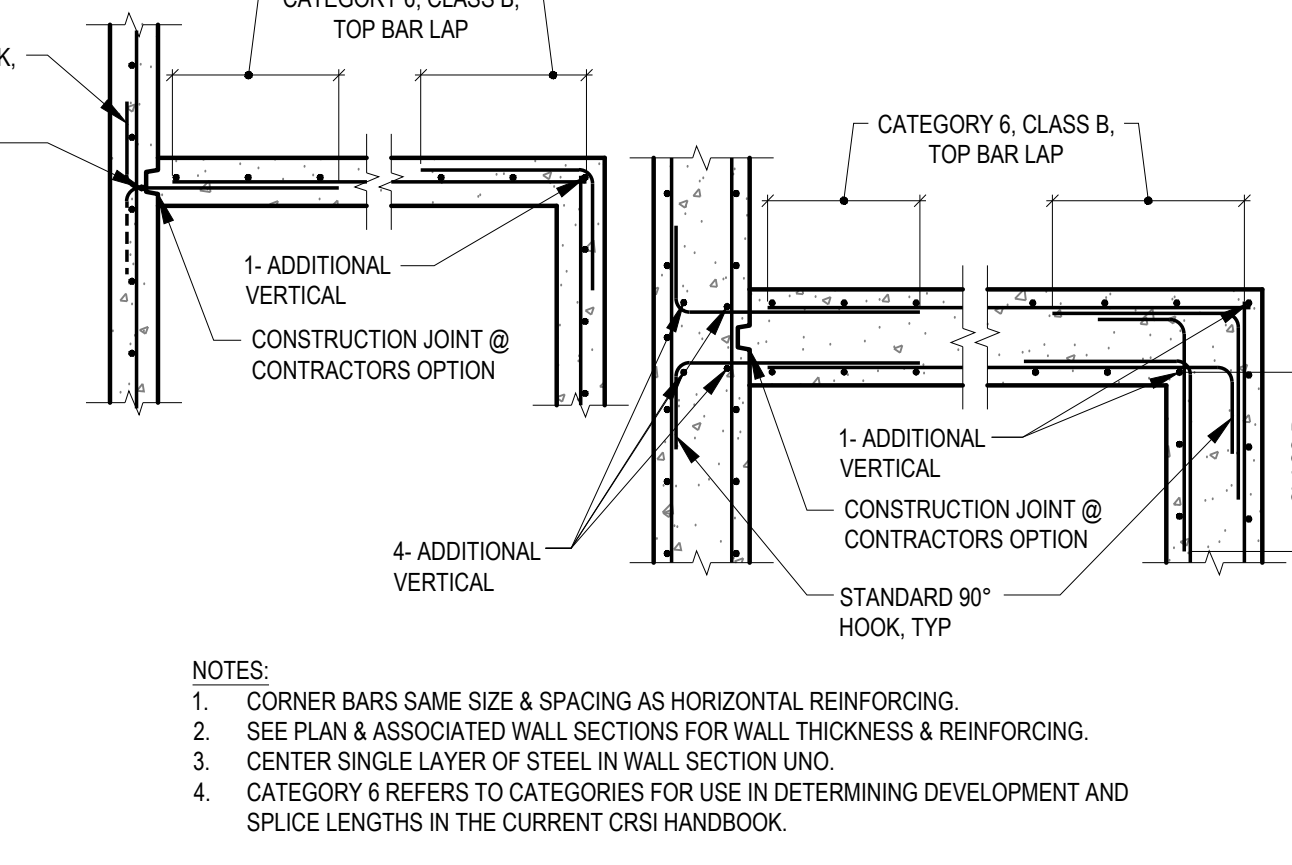
4 TYPICAL SLAB ON GRADE ISOLATION JOINTS @ COLUMN  
SCALE: NTS



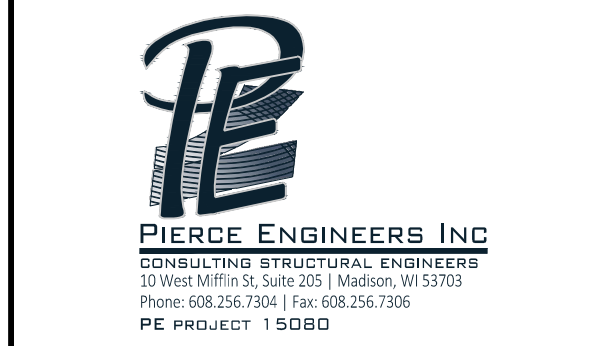
3 SLAB ON GRADE CONSTRUCTION/CONTROL JOINT  
SCALE: NTS



2 TYPICAL VERTICAL WALL JOINTS  
SCALE: NTS



1 REINFORCING @ WALL CORNERS  
SCALE: NTS



REVISION	DATE	BY	TITLE

BID DOCUMENTS  
ISSUED 04/28/15