

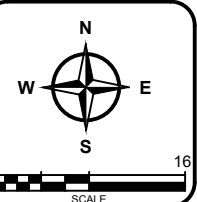


General Engineering Company  
 P.O. Box 340 • 916 Silver Lake Dr. • Portage, WI 53901  
 608-742-2169 (Office) • 608-742-2592 (Fax)  
 www.generalengineering.net

This document contains confidential information of General Engineering Company. Neither this document nor the information herein is to be reproduced, distributed, used or disclosed either in whole or in part except as specifically authorized by General Engineering Company.

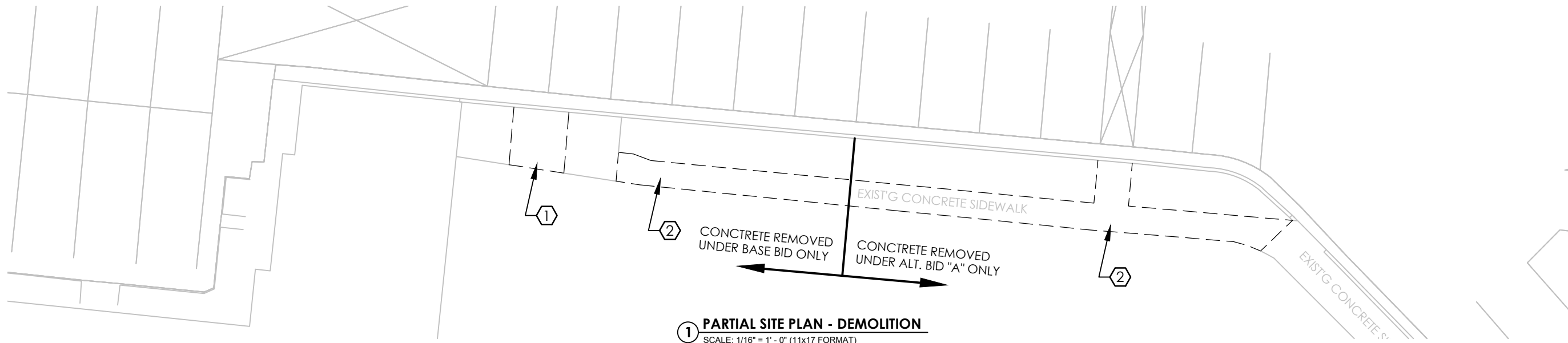
**PARTIAL SITE PLANS, SYMBOLS  
 HUMAN SERVICES ELECTRIC  
 VEHICLE CHARGING STATIONS  
 DANE COUNTY DEPT. OF PUBLIC WORKS  
 CITY OF MADISON  
 DANE COUNTY, WI**

NO.	DATE	BY	REVISIONS

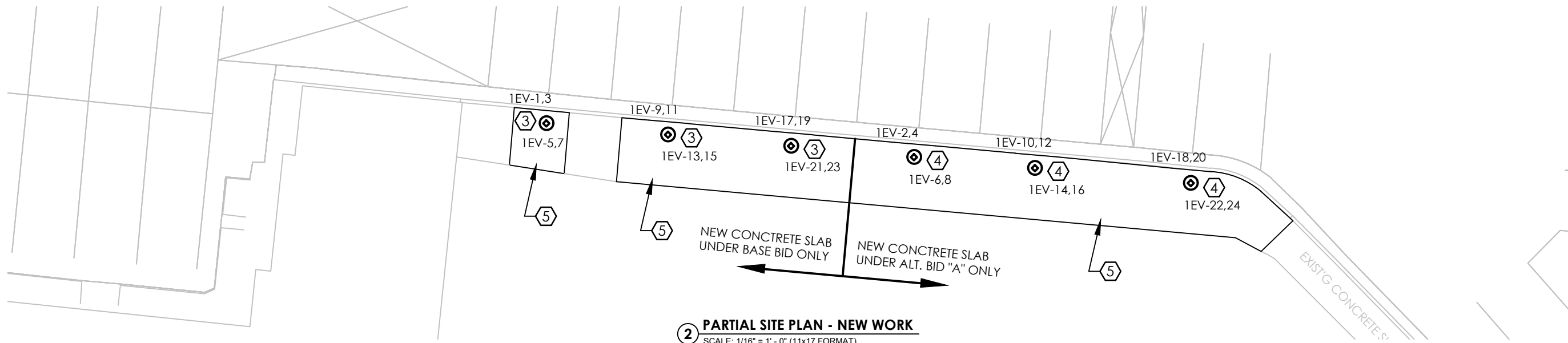


DRAWN BY	RDH
REVIEWED BY	RDH
ISSUE DATE	SEPT 2021
GEC FILE NO.	2-0321-176
SHEET NO.	

**E1.0**



**1 PARTIAL SITE PLAN - DEMOLITION**  
 SCALE: 1/16" = 1' - 0" (11x17 FORMAT)



**2 PARTIAL SITE PLAN - NEW WORK**  
 SCALE: 1/16" = 1' - 0" (11x17 FORMAT)

**ELECTRICAL SYMBOLS**

- THIN DASHED LINE INDICATES EXISTING EQUIPMENT TO BE REMOVED
- THIN SOLID LINE INDICATES EXISTING EQUIPMENT TO REMAIN
- DUPLEX RECEPTACLE, "G" INDICATES GFCI TYPE, "WP" INDICATES DEVICE TO BE FURNISHED WITH WEATHERPROOF COVER
- CIRCUIT BREAKER SWITCHBOARD
- BRANCH CIRCUIT PANELBOARD
- ELECTRIC VEHICLE CHARGING STATION - REFER TO SPECIFICATIONS
- JUNCTION BOX, 4"x4"x2 1/8" (UNO)

**ELECTRICAL ABBREVIATIONS**

- |                              |                                |
|------------------------------|--------------------------------|
| AFF --- ABOVE FINISHED FLOOR | G --- GROUND                   |
| AFG --- ABOVE FINISHED GRADE | OC --- ON CENTER               |
| C --- CONDUIT                | TYP --- TYPICAL                |
| CL --- CENTERLINE            | UNO --- UNLESS NOTED OTHERWISE |
| EC --- ELECTRICAL CONTRACTOR | WP --- WEATHERPROOF            |

**PLAN NOTES:**

- 1 REMOVE THIS SECTION OF EXISTING CONCRETE PAVEMENT TO ACCOMMODATE INSTALLATION OF NEW CHARGER AND ASSOCIATED FOUNDATION (BASE BID ONLY).
- 2 REMOVE THIS SECTION OF EXISTING CONCRETE PAVEMENT (BASE OR ALT. BID "A" AS INDICATED).
- 3 INSTALL THIS EV CHARGER AND ASSOCIATED FOUNDATION UNDER BASE BID ONLY.
- 4 INSTALL THIS EV CHARGER AND ASSOCIATED FOUNDATION UNDER ALT. BID "A" ONLY.
- 5 POUR NEW CONCRETE SLAB AROUND, AND AT SAME ELEVATION AS, EV CHARGER FOUNDATION. REFER TO DETAIL, SHEET E3.0.

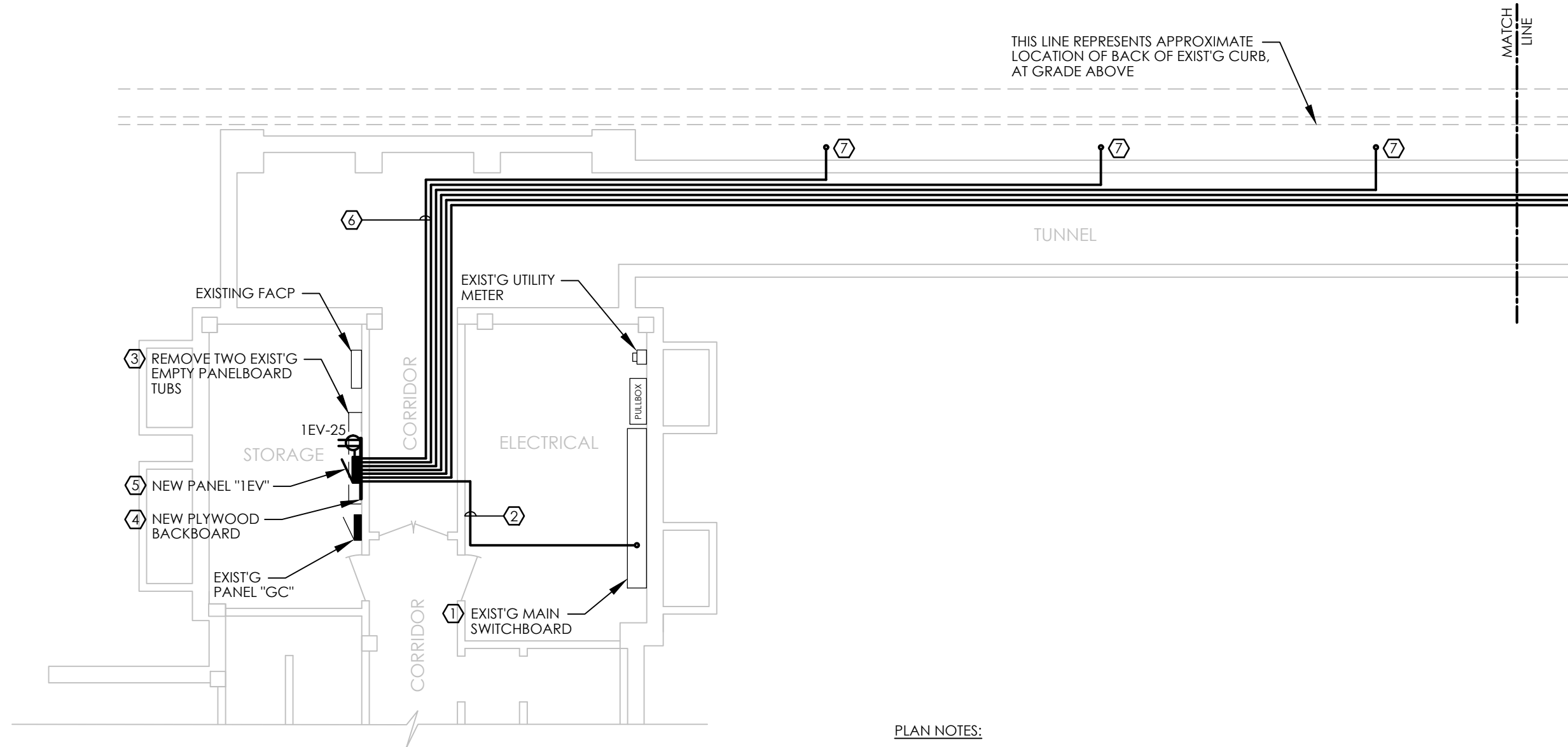


General Engineering Company

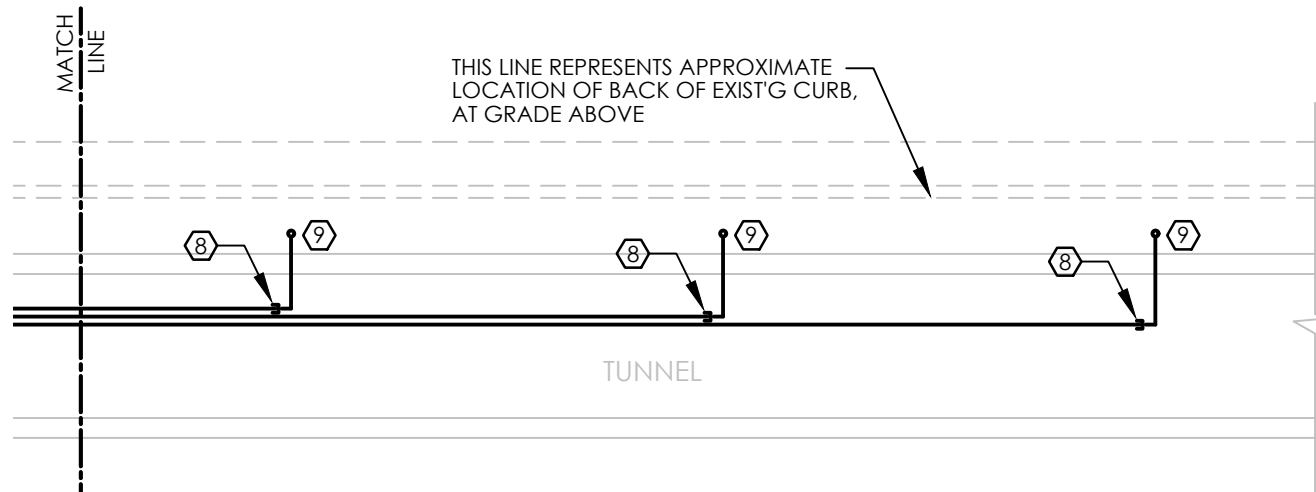
P.O. Box 340 • 916 Silver Lake Dr. • Portage, WI 53901  
 608-742-2169 (Office) • 608-742-2592 (Fax)  
 www.generalengineering.net

This document contains confidential information. Information of General Engineering Company, whether in whole or in part except as specifically authorized by General Engineering Company.

**PARTIAL PLANS**  
**HUMAN SERVICES ELECTRIC**  
**VEHICLE CHARGING STATIONS**  
**DANE COUNTY DEPT. OF PUBLIC WORKS**  
 CITY OF MADISON  
 DANE COUNTY, WI



**1 PARTIAL BASEMENT & TUNNEL PLAN**  
 SCALE: 1/8" = 1' - 0" (11x17 FORMAT)

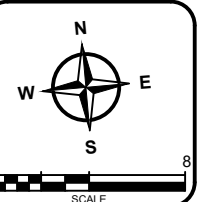


**2 PARTIAL TUNNEL PLAN**  
 SCALE: 1/8" = 1' - 0" (11x17 FORMAT)

**PLAN NOTES:**

- ① CUTLER-HAMMER POW-R-LINE C SWITCHBOARD - 2,500A, 120/208V, 3Ø, 4W. PROVIDE NEW 400/3 BREAKER IN EXISTING SPACE TO FEED NEW PANEL "1EV".
- ② 4#500 MCM, 1#3G, 3"C.
- ③ TURN EMPTY TUBS OVER TO OWNER. SHOULD THE OWNER DECLINE TO ACCEPT THIS MATERIAL, IT SHALL BECOME THE PROPERTY OF THE CONTRACTOR FOR PROPER DISPOSAL.
- ④ PROVIDE 4'x8'x3/4" FIRE RETARDANT PLYWOOD BACKBOARD.
- ⑤ PROVIDE NEW 400A, 120/208V, 3Ø, 4W PANELBOARD - 400/3 MCB, 42 CKT INTERIOR, WITH 12 - 40/2 AND 3 - 20/1 BRANCH BREAKERS.
- ⑥ 6#8, 1#8G, 1"C TO NEW DUAL-STATION EV CHARGER. CIRCUITS SHALL BE ROUTED ON TUNNEL WALL - REFER TO DETAIL, SHEET E3.0 (BASE BID: TYP FOR 3, ALTERNATE BID: TYP FOR 3).
- ⑦ CIRCUITS SHALL PENETRATE TUNNEL WALL, AND EXTEND UP THROUGH CONCRETE BASE - REFER TO DETAIL, SHEET E3.0.
- ⑧ BASE BID ONLY: PROVIDE EMPTY CONDUIT FROM NEW PANEL "1EV" TO THIS POINT, AND CAP FOR FUTURE USE.
- ⑨ ALTERNATE BID "A" ONLY: PROVIDE CONDUCTORS FROM NEW PANEL "1EV", AND EXTEND WIRE AND CONDUIT UP THROUGH CONCRETE BASE - REFER TO DETAIL, SHEET E3.0.

REVISIONS	NO.	BY	DATE



DRAWN BY	RDH
REVIEWED BY	RDH
ISSUE DATE	SEPT 2021
GEC FILE NO.	2-0321-176
SHEET NO.	



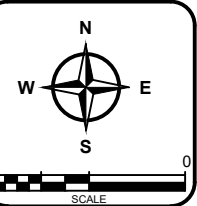
General Engineering Company

P.O. Box 340 • 916 Silver Lake Dr. • Portage, WI 53901  
608-742-2169 (Office) • 608-742-2592 (Fax)  
www.generalengineering.net

This document contains confidential or proprietary information of General Engineering Company. Neither this document nor the information herein is to be reproduced, distributed, used or disclosed either in whole or in part except as specifically authorized by General Engineering Company.

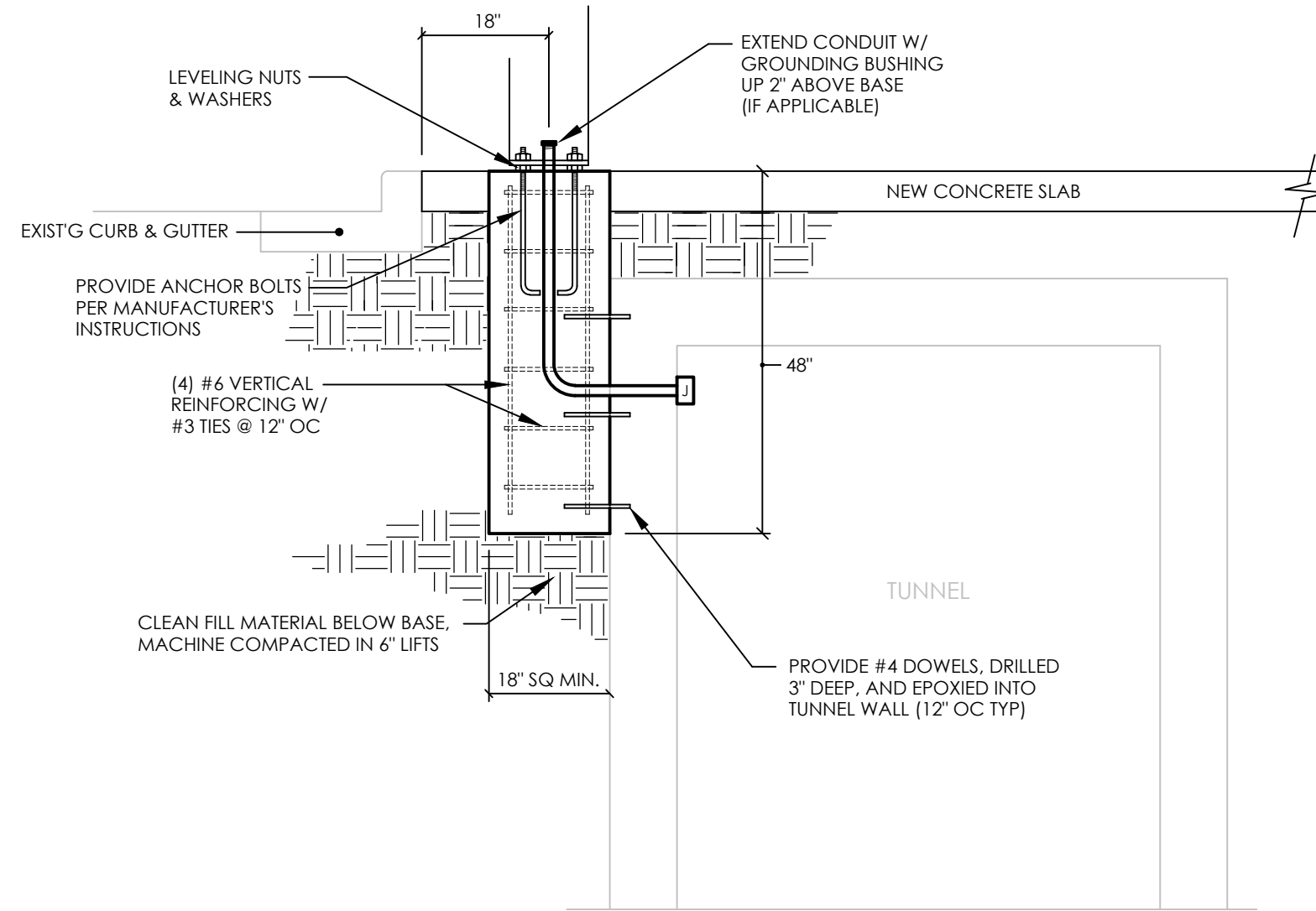
**DETAILS**  
**HUMAN SERVICES ELECTRIC**  
**VEHICLE CHARGING STATIONS**  
**DANE COUNTY DEPT. OF PUBLIC WORKS**  
**CITY OF MADISON**  
**DANE COUNTY, WI**

REVISIONS	NO.	BY	DATE

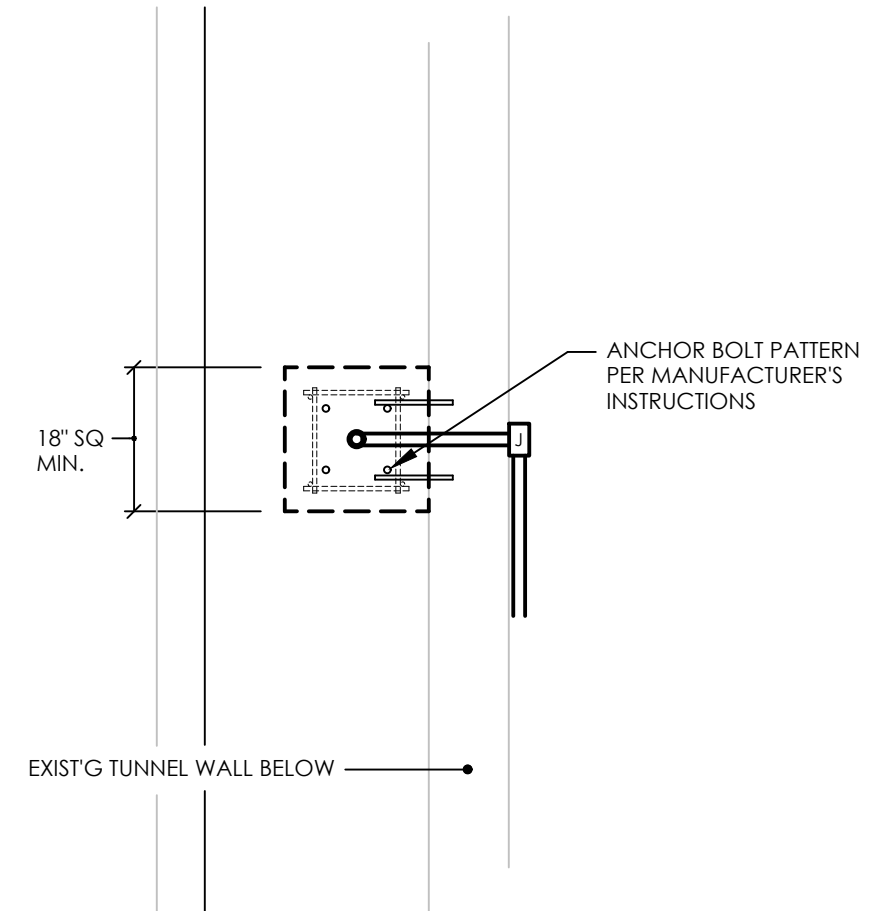


DRAWN BY	RDH
REVIEWED BY	RDH
ISSUE DATE	SEPT 2021
GEC FILE NO.	2-0321-176
SHEET NO.	

**E3.0**



**1 CHARGER BASE INSTALLATION DETAIL - SECTION**  
NO SCALE



**2 CHARGER BASE INSTALLATION DETAIL - PLAN**  
NO SCALE