

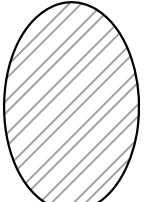
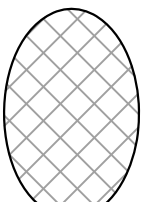
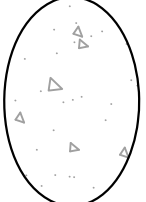
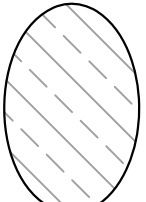
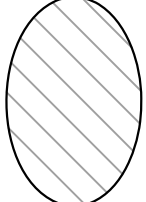
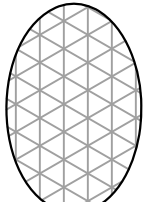
2012 RESTORATION DANE COUNTY CAPITOL SQUARE SOUTH PARKING RAMP 113 S. HENRY STREET MADISON, WI 53703

**GMA PROJECT # 212003
DANE COUNTY RFB # 312010**

DRAWING SHEET INDEX

- T0-01 TITLE SHEET
- S1-01 TOPSIDE PLANS 5, 4, 3, 2
- S1-02 TOPSIDE PLANS 1L & DETAILS
- S1-03 UNDERSIDE PLANS 5, 4, 1 & DETAILS
- S4-01 STAIR SECTIONS, PLANS & DETAILS

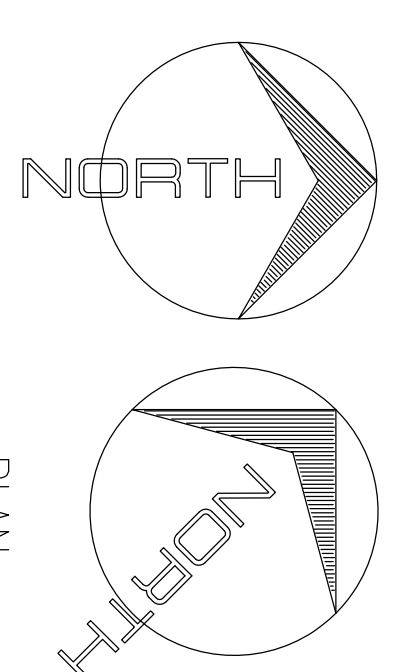
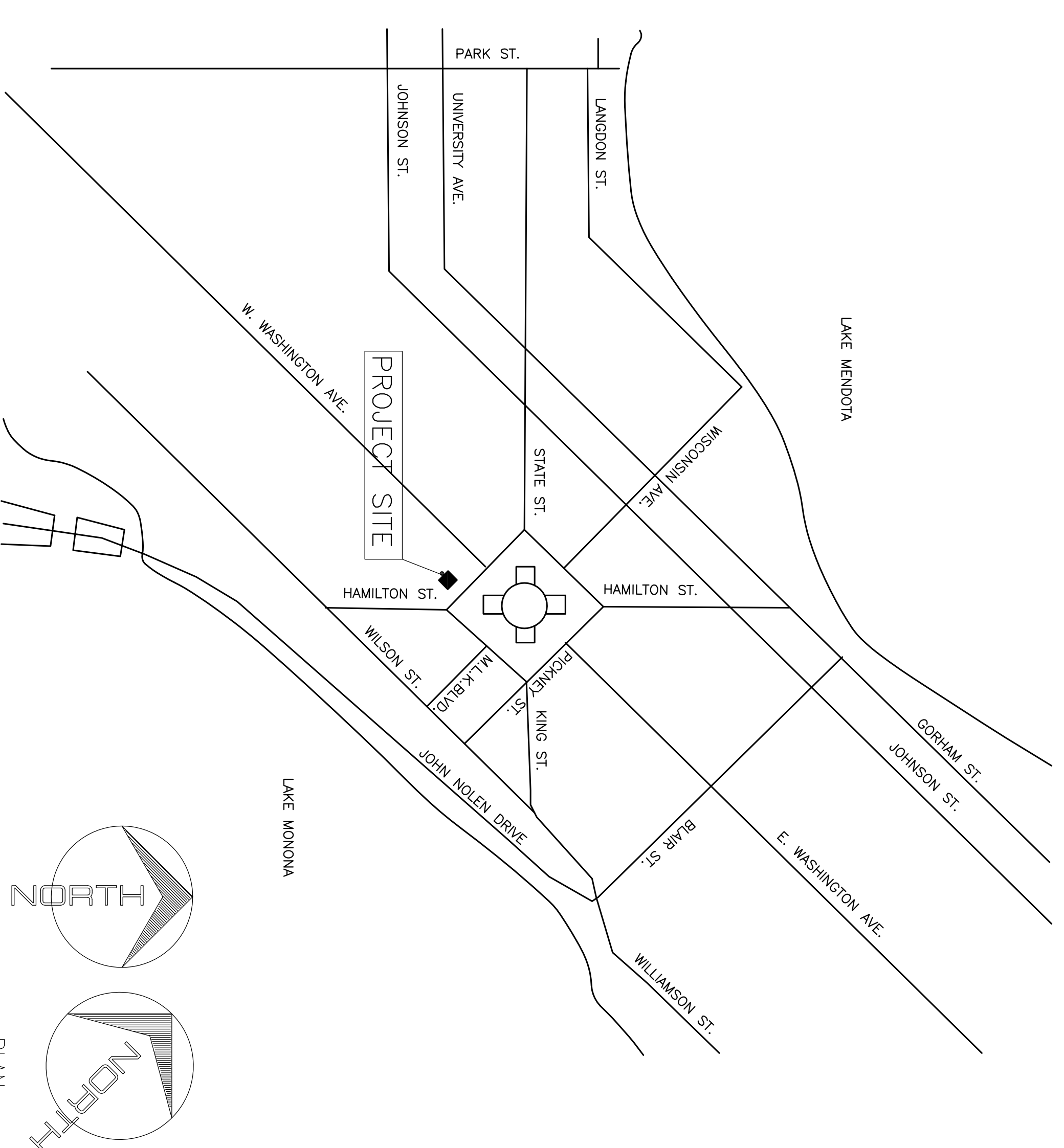
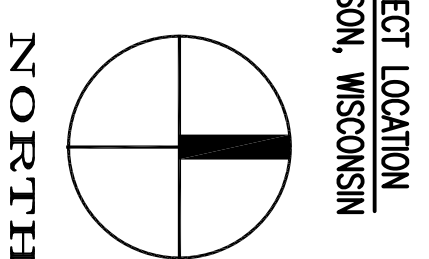
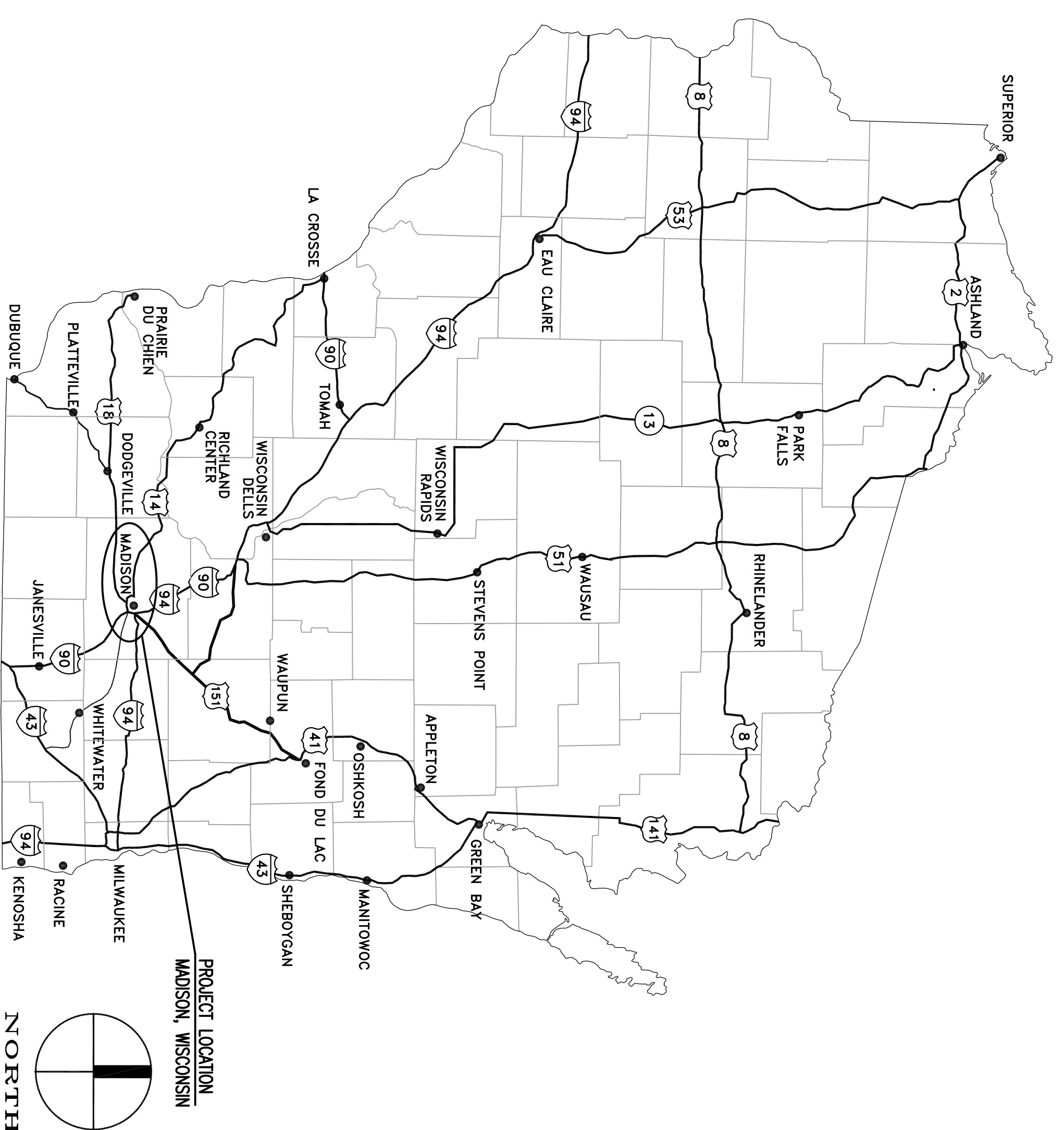
MATERIALS KEY

	METAL		TOPSIDE EPOXY HEALER SEALER FLOOD COAT AREA
	CONCRETE		UNDERSIDE CONCRETE RESTORATION AREA
	MASONRY		EXISTING UNDERSIDE CATHODIC PROTECTION ANODE

DRAWING SEAL



PROJECT LOCATION



GMA
Engineers
GINNAR MALM & ASSOC., INC.
CONSULTING ENGINEERS
6402 Odum Rd.
Madison, WI 53719
(608) 286-1108 FAX (608) 286-1109
E-Mail: mal@gmaengineers.com

2012	ISSUED FOR CONSTRUCTION	
Date	Revisions/Drawings	Symbol

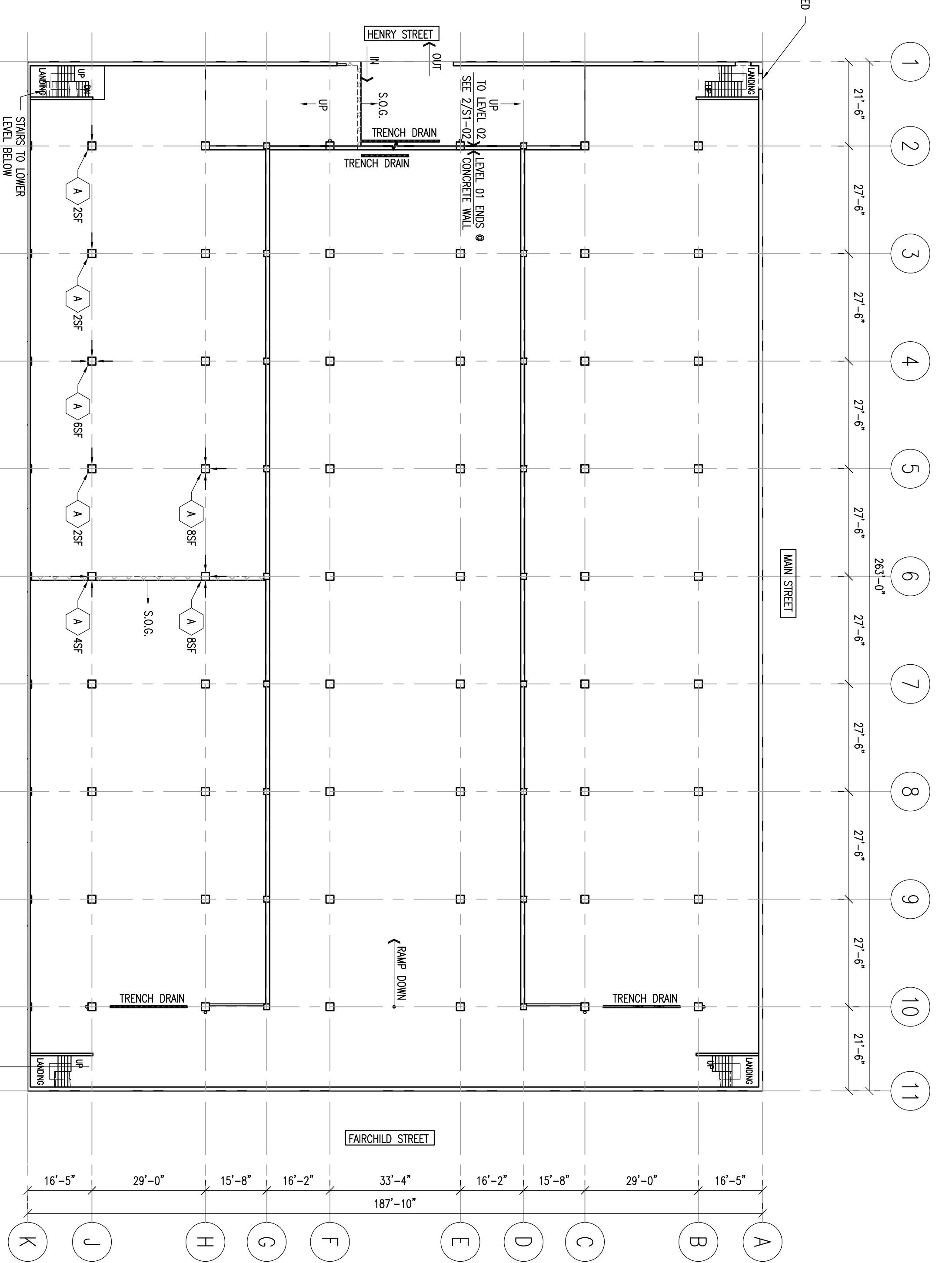
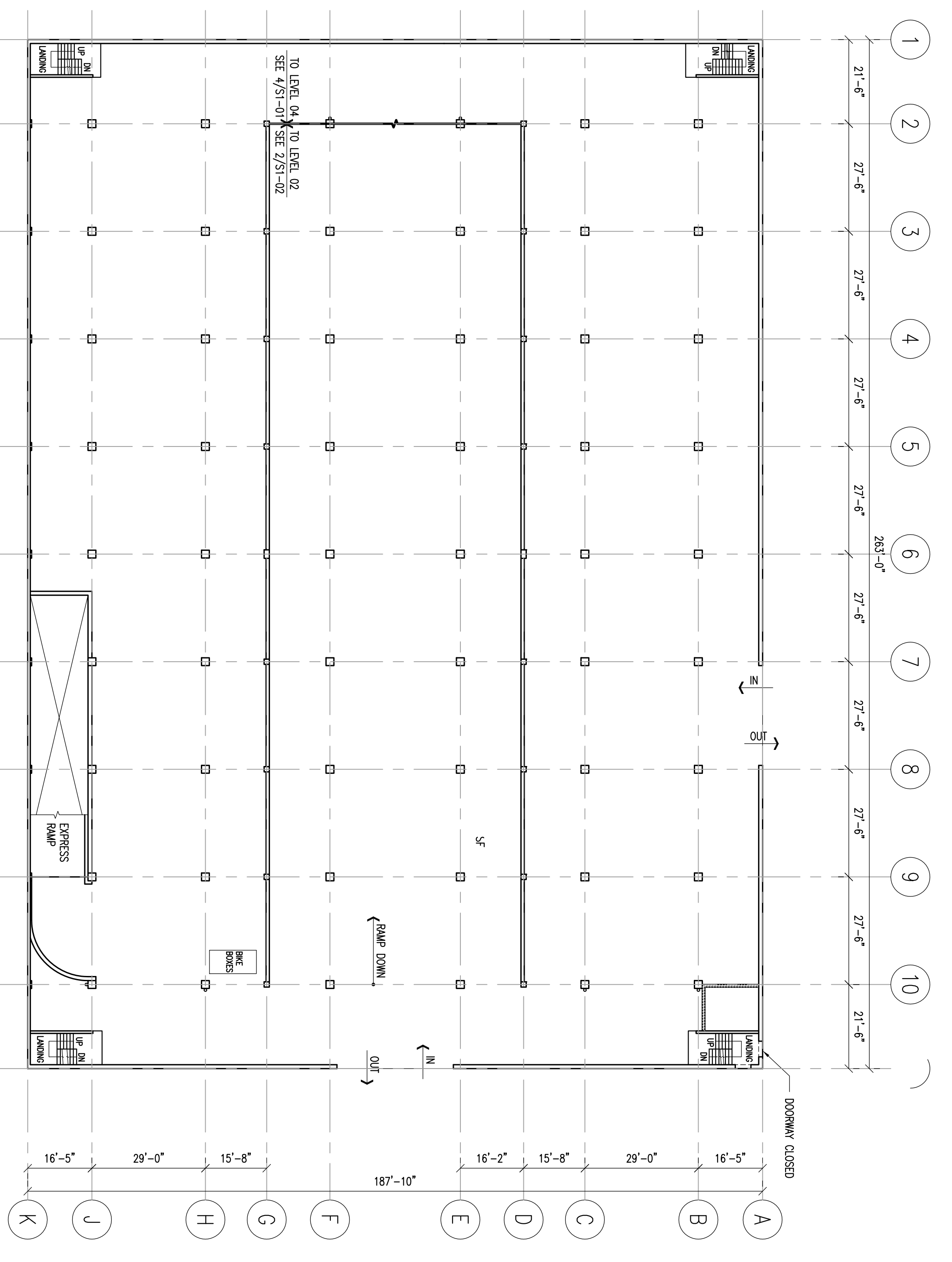
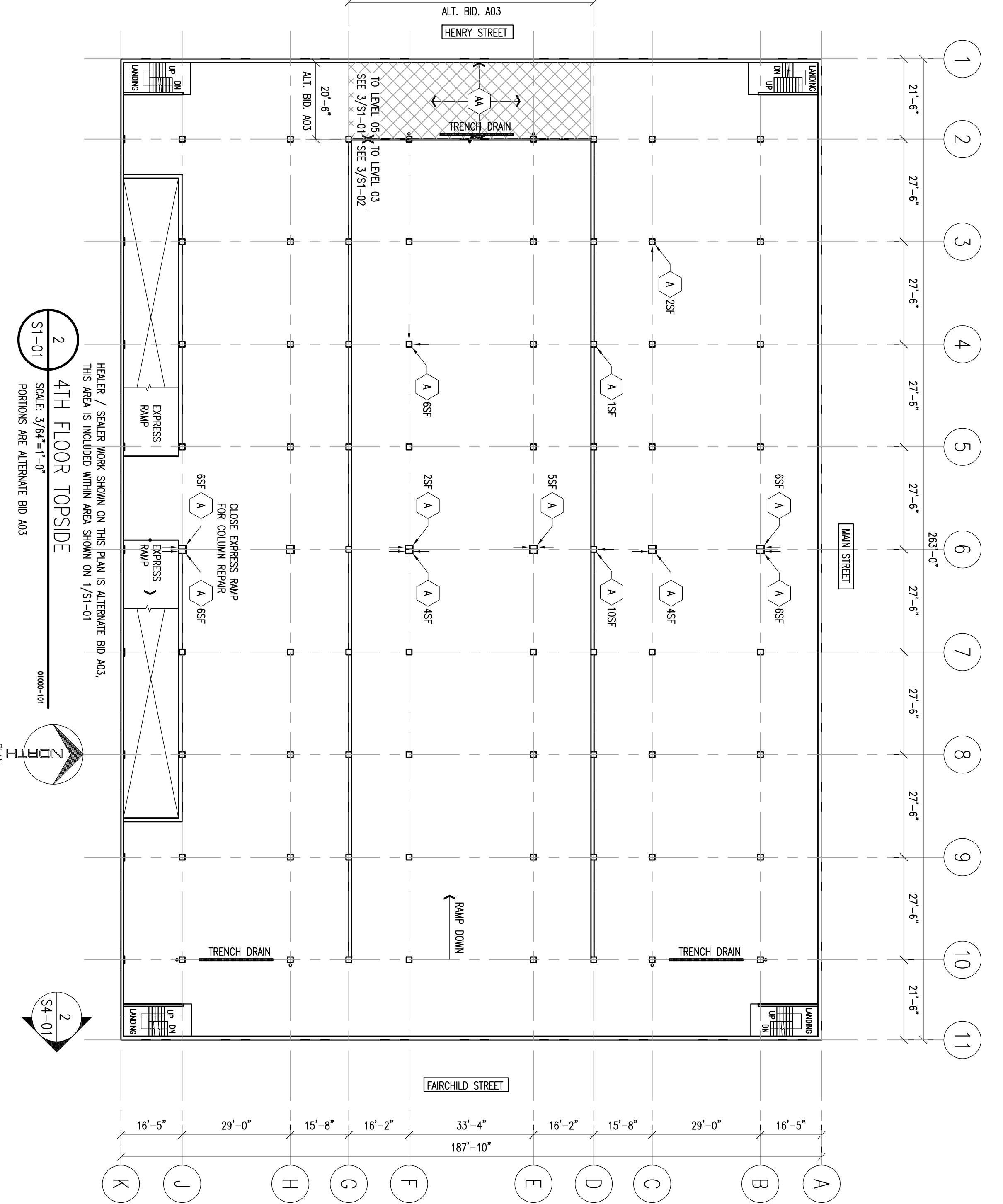
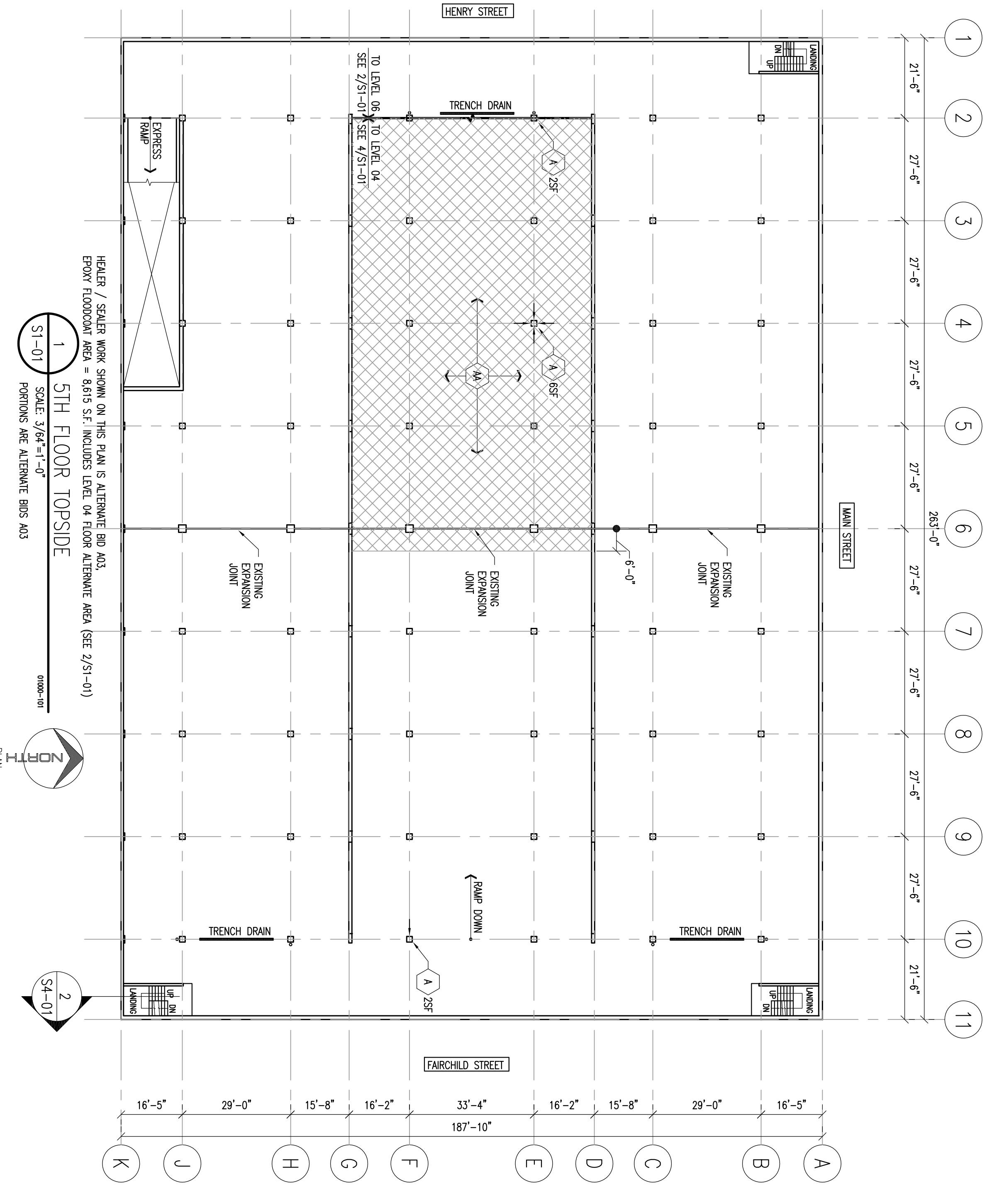
**2012 RESTORATION
CAPITOL SQUARE SOUTH PARKING RAMP
113 S. HENRY STREET
MADISON, WI 53703**

Drawing Title	
Project Number	Sheet No.
212003	T0-01
Drawn By: RAB	

Continued

TOPSIDE CONSTRUCTION NOTES:

- (A) CONCRETE COLUMN & WALL DEMOLITION BEING NECESSARY FOR THE PROPOSED DEPTH REDUCTION OF VERTICAL CURBS TO PROVIDE THE REMOVAL OF UNDESIRABLE CONCRETE. ADVISE ORT BASTING OF ACCEPTABLE PERFORMANCE. REMOVE ALL UNDESIRABLE CONCRETE FROM EXISTING CURBS TO NEW AS SPECIFIED. CONCRETE SHALL BE PLACED AND COMPACTED IN PLACE BY FORMS OR FROM AND POUR COMPACTED PLACE REPAIR WORKER AND INSPECTION REQUIRED BY THE DIVISION.
- (B) FLOOD CONTROL OF EXISTING CHECK HEATER PENETRATING SCALE. SEE ATTACHED AREA.
- (C) DEGRADE AND PRESSURE WASH CONCRETE SURFACE TO RECEIVE FLOOD COAT.
- (D) REMOVE ALL EXISTING SEALANT FROM PREVIOUSLY ROUTED RANDOM CRACKS & CONTRACTION JOINTS (C.J.) ROUGH CRACKS & CONTRACTION JOINTS SHALL BE REPAIRED WITH POLYURETHANE CONCRETE SEALANT AT THE INTERFERENCE OF THE SLAB AND A VERTICAL WALL CURB AND SURFACES (HORIZONTAL & VERTICAL).
- (E) V-CRACK REPAIRED 1/8" OR LARGER CRACKS, VERTICAL BEING REPAIRED WITH POLYURETHANE CONCRETE SEALANT. CRACKS LESS THAN 1/8" SHALL BE REPAIRED WITH OVER DRESS SAND PRIOR TO GRANITE FEEDING CRACKS. IF CRACKS ARE REPAIRED WITH POLYURETHANE CONCRETE SEALANT, GRANITE FEED SHALL BE IN ALL VERTICAL CRACKS FOR 5 - 10 FEET ABOVE AND BELOW THE CRACK. GRANITE FEED SHALL BE PLACED IN THE CRACKS UNTIL THE CRACKS ARE FILLED TO THE SURFACE. GRANITE FEED SHALL BE PLACED IN THE CRACKS UNTIL THE CRACKS ARE FILLED TO THE SURFACE. GRANITE FEED SHALL BE PLACED IN THE CRACKS UNTIL THE CRACKS ARE FILLED TO THE SURFACE.
- (F) UPON REMOVAL OF EXISTING ASPHALT AND PATCHES OVER THE EXISTING CONCRETE, GRANITE FEED SHALL BE PLACED IN THE CRACKS UNTIL THE CRACKS ARE FILLED TO THE SURFACE. GRANITE FEED SHALL BE PLACED IN THE CRACKS UNTIL THE CRACKS ARE FILLED TO THE SURFACE.



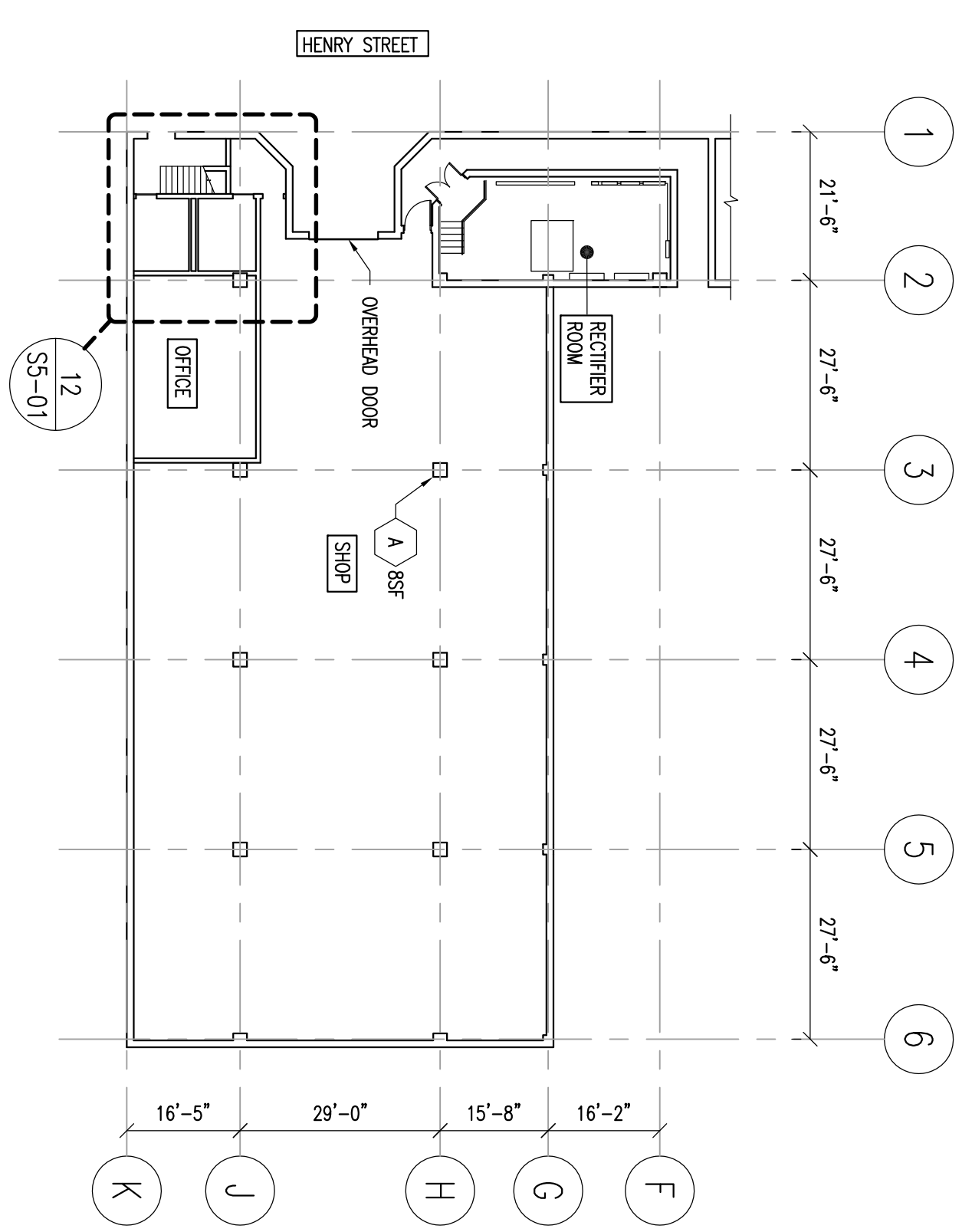
DATE	ISSUED FOR CONSTRUCTION	SYMBOLS
2012	ISSUED FOR CONSTRUCTION	
	Revisions/Changes	

2012 RESTORATION
CAPITOL SQUARE SOUTH PARKING RAMP
 113 S. HENRY STREET
 MADISON, WI 53703

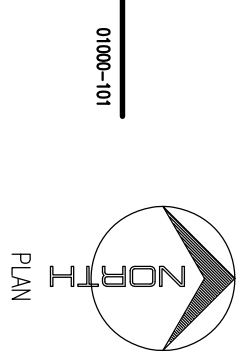
Continued

TOPSIDE CONSTRUCTION NOTES:

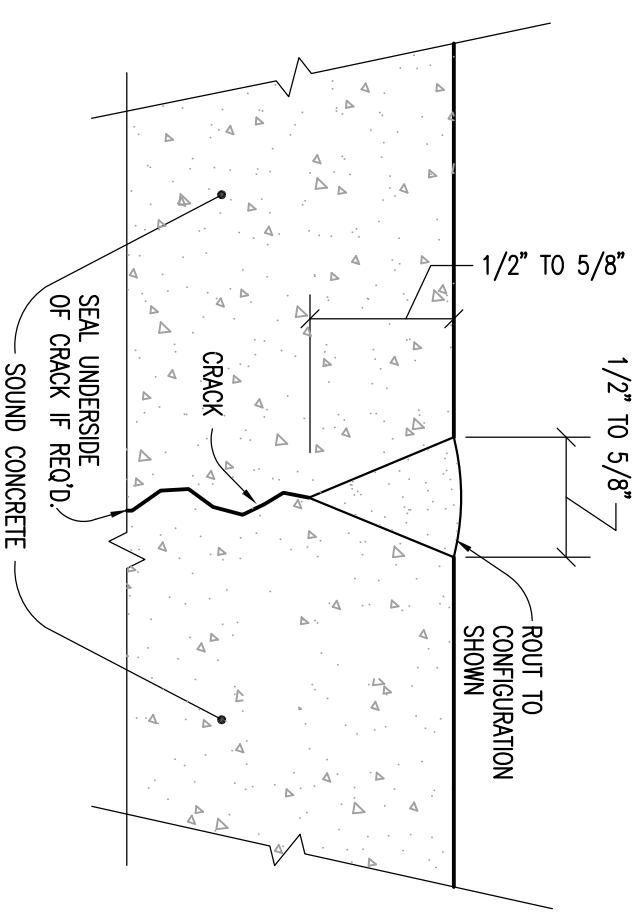
- A FINISH ALL MATERIALS, LAGER, GRANES AND INCIDENTALS NECESSARY FOR THE FINAL, DRY REMEDIATION OF VERTICAL SURFACES IN CAST IN PLACE COLUMNS & WALLS. THE RESTORATION AGENCY WILL BE RESPONSIBLE FOR THE SELECTION OF ACCEPTABLE REMEDIATION MATERIALS AND METHODS. THE CONTRACTOR SHALL BE RESPONSIBLE FOR THE REPLACEMENT OF UNACCEPTABLE REMEDIATION WITH NEW AS SPECIFIED. THE CONTRACTOR SHALL BE RESPONSIBLE FOR THE WORKMANSHIP OF THE REMEDIATION. THE CONTRACTOR SHALL BE RESPONSIBLE FOR THE PROTECTION OF THE WORK AREA BY FENCING OR FROM AND FROM ADJACENT AREAS. THE WORK SHALL BE SUBJECT TO INSPECTION AND APPROVAL BY THE ENGINEER NOT LISTED.
- B NOT LISTED



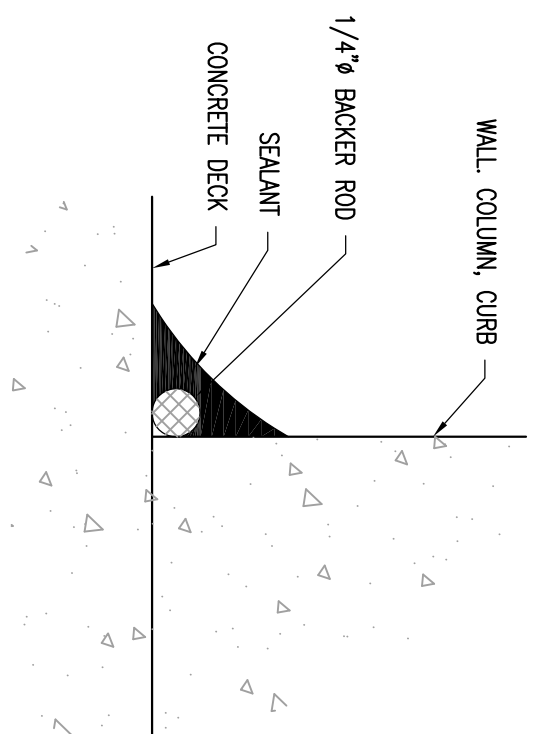
1 LOWER LEVEL TOPSIDE
SCALE: 3/8"=1'-0"



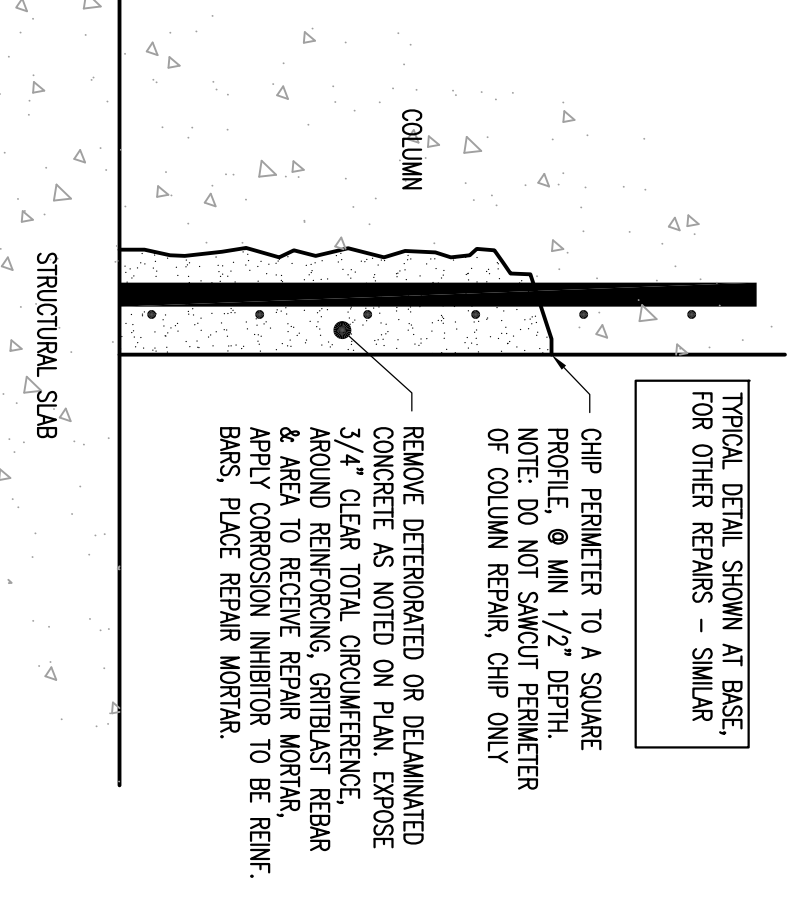
4 CRACK REPAIR DETAIL (OPTION B)
SCALE: N.T.S.
ALTERNATE BID NO. 403



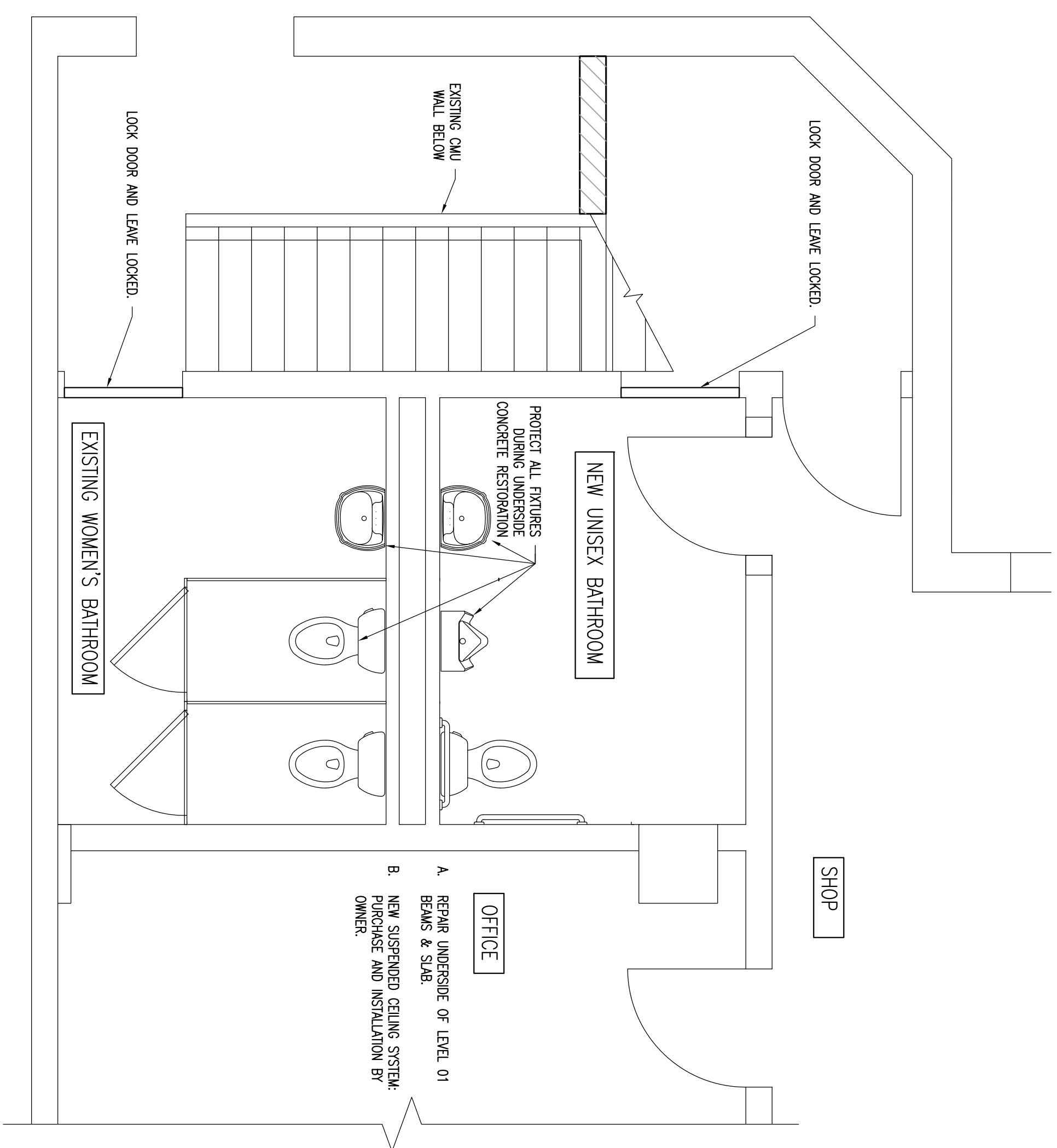
5 SEALANT COVE DETAIL
SCALE: FULL
ALTERNATE BID NO. 403



6 COLUMN BASE CONCRETE REPAIR
SCALE: 1 1/2"=1'-0"



2 BATHROOM REMODELING PLAN
SCALE: 3/8"=1'-0"



2012 RESTORATION
CAPITOL SQUARE SOUTH PARKING RAMP
113 S. HENRY STREET
MADISON, WI 53703

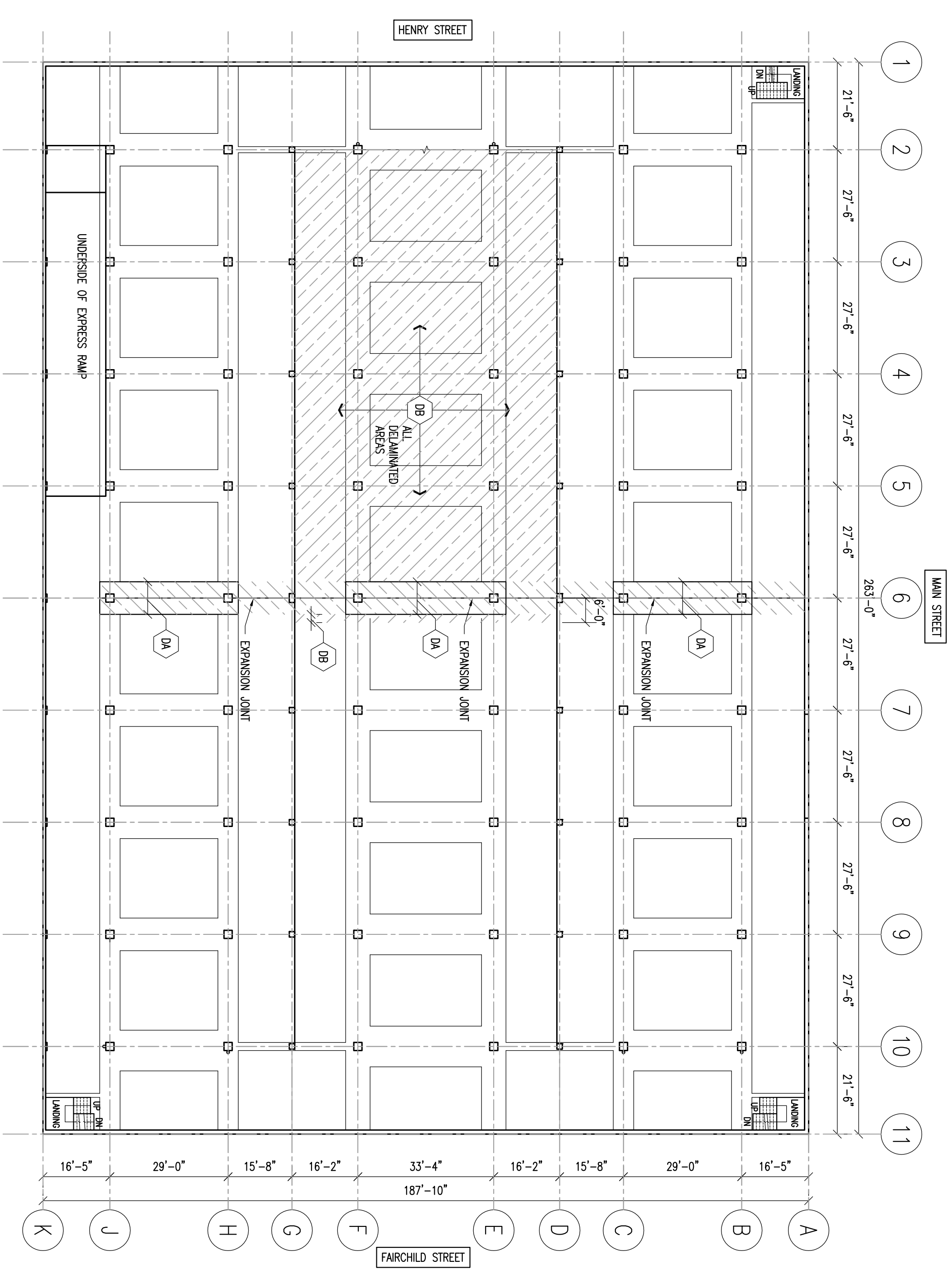
TOPSIDE PLAN LL & DETAILS

Sheet No. S1-02

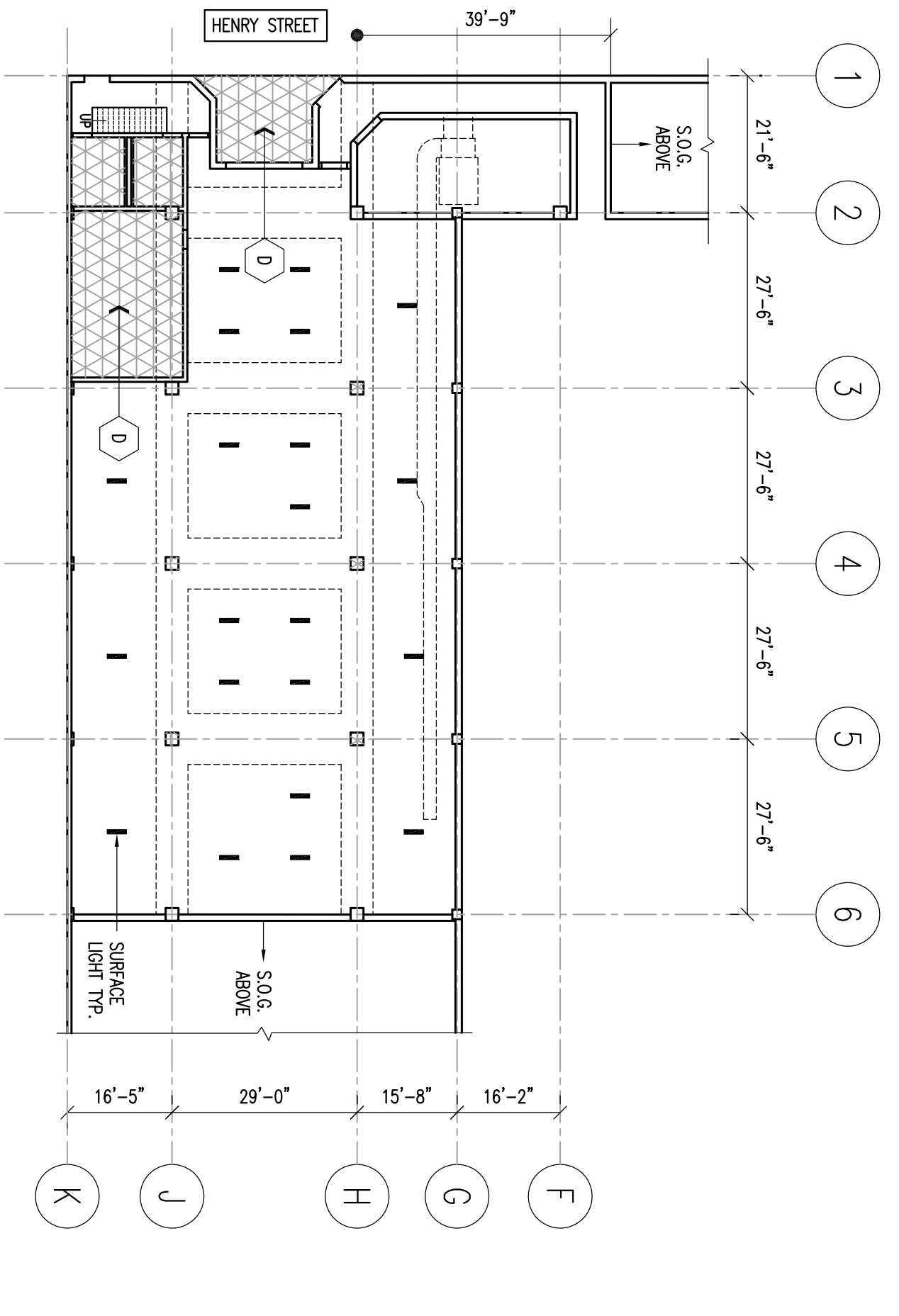
Consultant:

UNDERSIDE CONSTRUCTION NOTES:

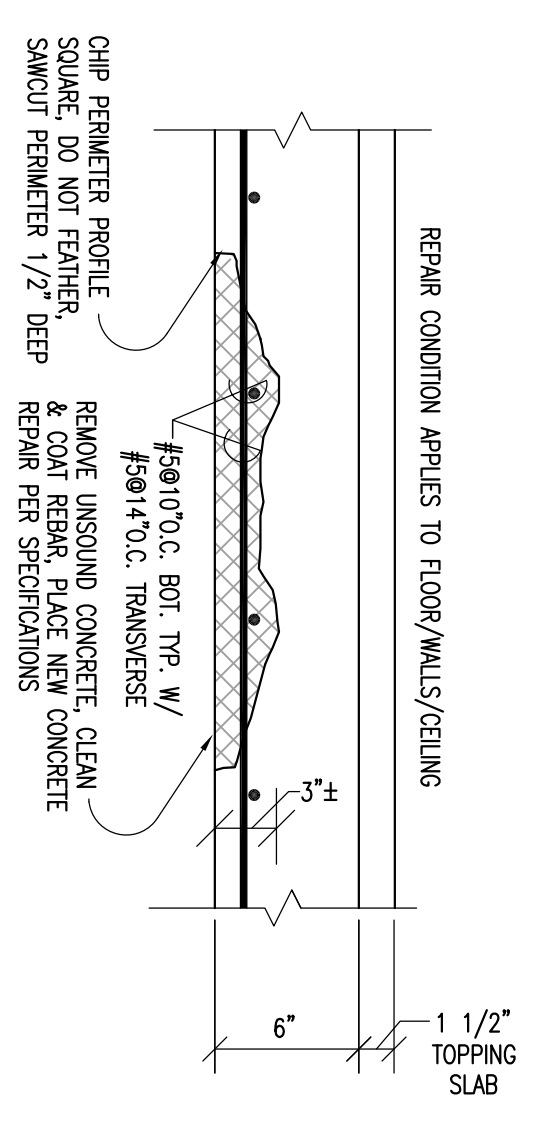
- 01 REPAIR OF UNDERSIDE BEAM & SLAB CONCRETE DIMENSIONS:
SET HATCHED AREA -
FINISH ALL MATERIALS, LABOR SERVICES AND INCIDENTALS NECESSARY FOR THE PERM, GETH, DEMOLITION OF UNDERSIDE SPILLS IN GUT IN PLACE SLABS. THE RESTORATION CONTRACTOR DEMANDS CONCRETE PERFORM THE REMOVAL OF UNDERSIDE CONCRETE, REVERSE GIRT BASTING OF ACCEPTABLE REINFORCING DIRECTED BY ENGINEER. CLEANING THE EXPOSED SOUND CONCRETE FROM TO PLACING NEW CONCRETE. USE ONE OF THE WORK SCHEDULE AND INSPECTION REQUIRED BY THE ENGINEER.
- 02 REPAIR OF UNDERSIDE BEAM & SLAB CONCRETE DIMENSIONS:
ALTERNATE BID SIZE -
SEE HATCHED AREA -
FINISH ALL MATERIALS, LABOR SERVICES AND INCIDENTALS NECESSARY FOR THE PERM, GETH, DEMOLITION OF UNDERSIDE SPILLS IN GUT IN PLACE SLABS. THE RESTORATION CONTRACTOR DEMANDS CONCRETE PERFORM THE REMOVAL OF UNDERSIDE CONCRETE, REVERSE GIRT BASTING OF ACCEPTABLE REINFORCING DIRECTED BY ENGINEER. CLEANING THE EXPOSED SOUND CONCRETE FROM TO PLACING NEW CONCRETE. USE ONE OF THE WORK SCHEDULE AND INSPECTION REQUIRED BY THE ENGINEER.



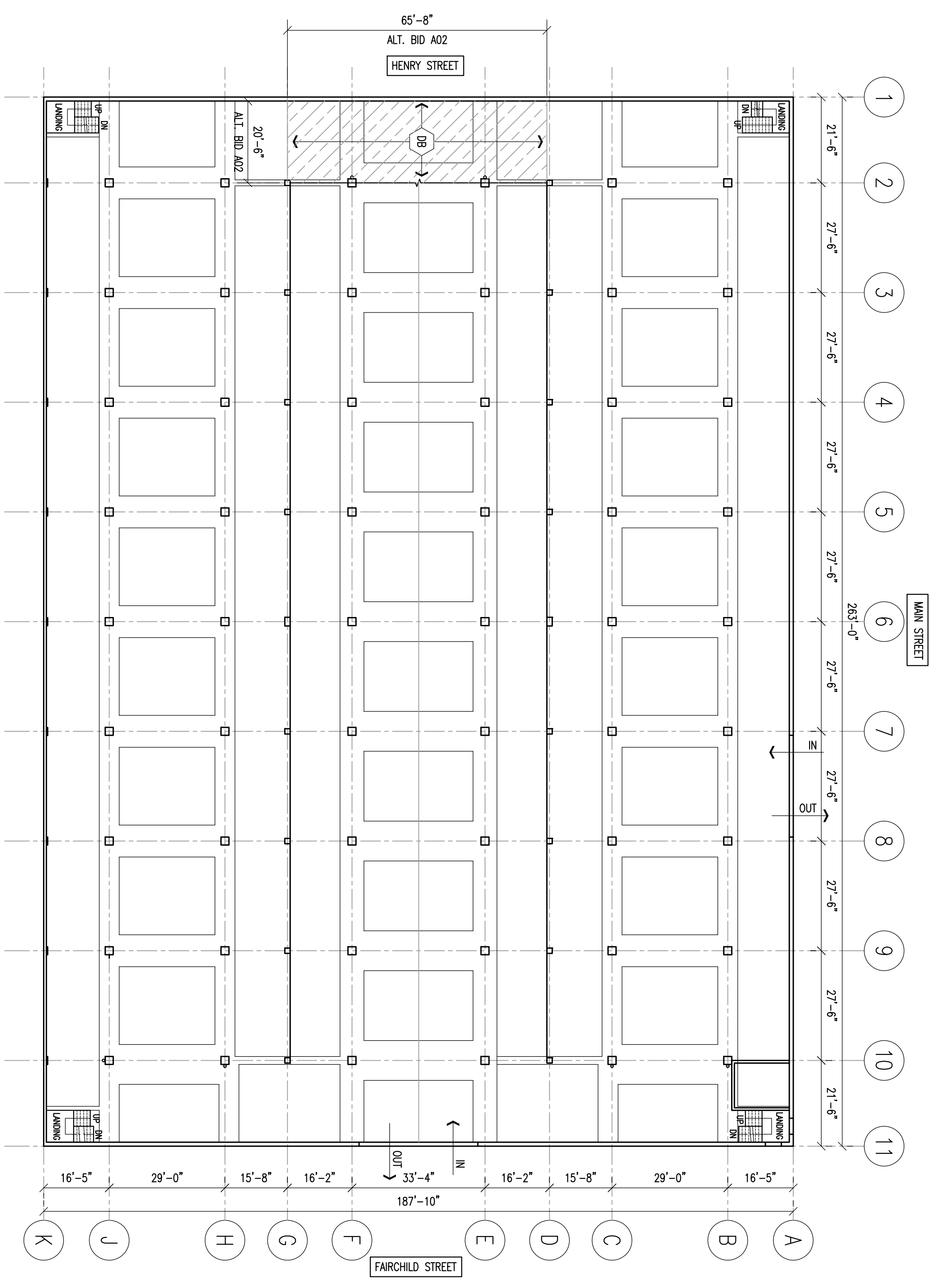
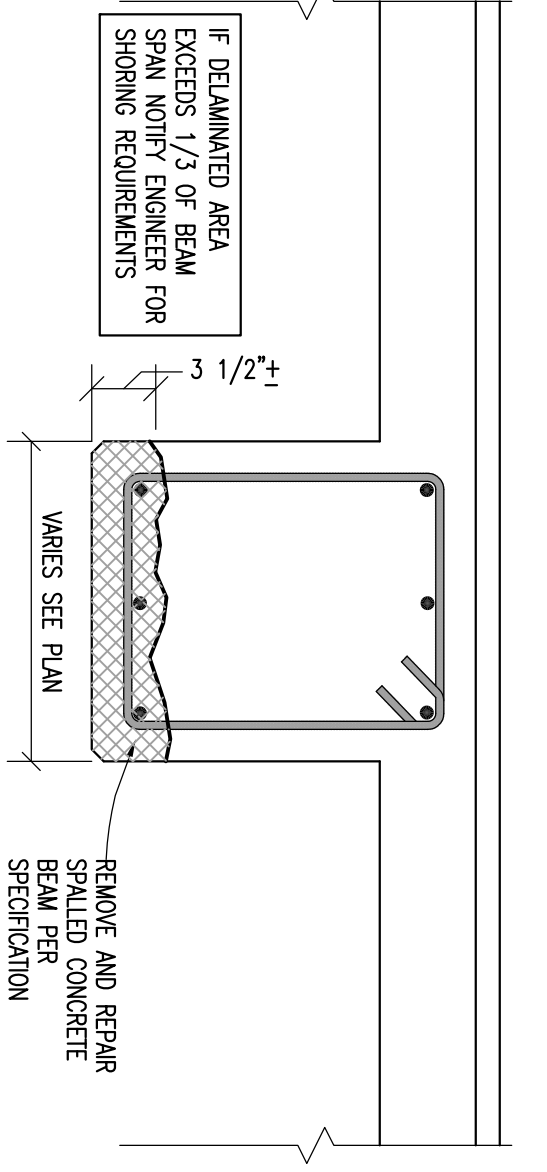
1 1ST FLOOR UNDERSIDE
SCALE 3/64"=1'-0"
PLAN



4 CONCRETE RESTORATION DETAIL
SCALE 1 1/2"=1'-0"
SECTION



5 BEAM REPAIR DETAIL
SCALE 1 1/2"=1'-0"
SECTION



3 4TH FLOOR UNDERSIDE
SCALE 3/64"=1'-0"
PLAN

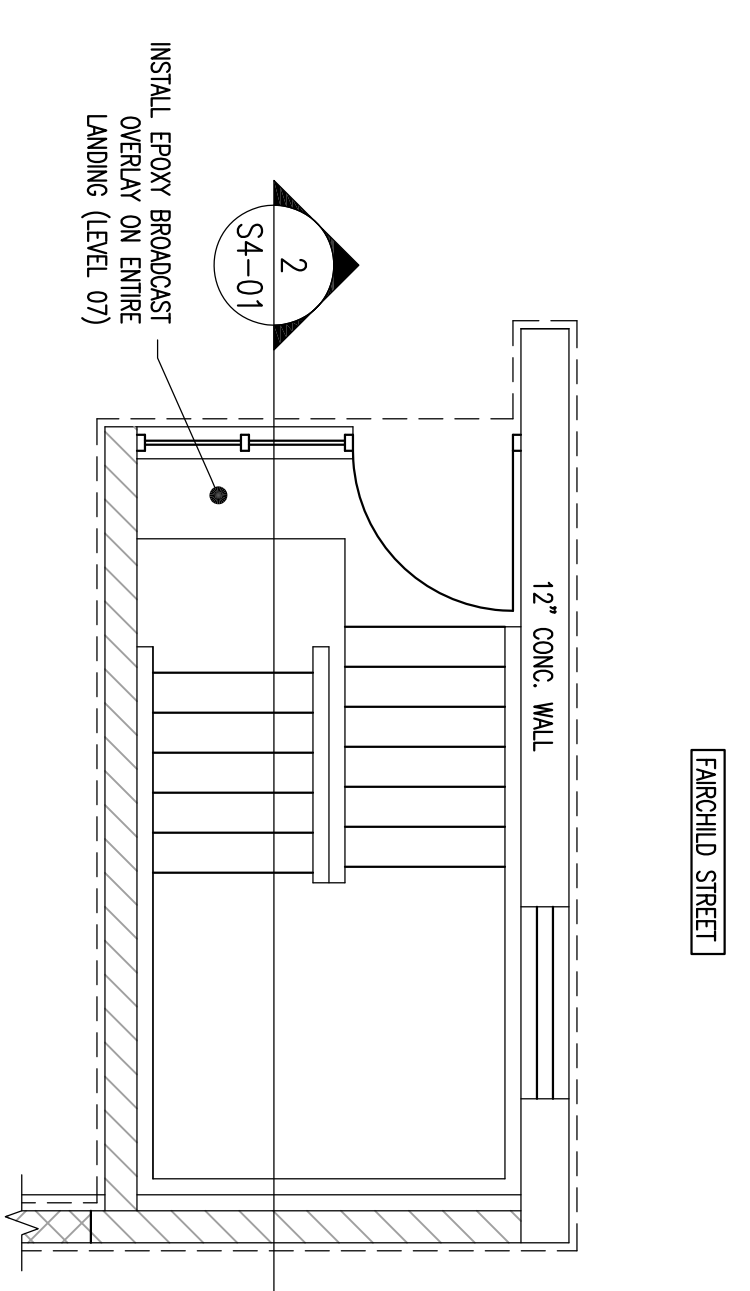
<p>NOTE: FINISH ALL MATERIALS, LABOR SERVICES AND INCIDENTALS NECESSARY FOR THE PERM, GETH, DEMOLITION OF UNDERSIDE SPILLS IN GUT IN PLACE SLABS. THE RESTORATION CONTRACTOR DEMANDS CONCRETE PERFORM THE REMOVAL OF UNDERSIDE CONCRETE, REVERSE GIRT BASTING OF ACCEPTABLE REINFORCING DIRECTED BY ENGINEER. CLEANING THE EXPOSED SOUND CONCRETE FROM TO PLACING NEW CONCRETE. USE ONE OF THE WORK SCHEDULE AND INSPECTION REQUIRED BY THE ENGINEER.</p>	
<p>DATE: 2/20/12</p> <p>ISSUED FOR CONSTRUCTION</p> <p>ISSUED TO: BUSINESS DEVELOPERS</p> <p>SYMBOLS:</p>	<p>2012 RESTORATION</p> <p>CAPITOL SQUARE SOUTH PARKING RAMP</p> <p>113 S. HENRY STREET</p> <p>MADISON, WI 53703</p>
<p>PROJECT NUMBER: 21800</p> <p>DATE: 2/20/12</p> <p>DESIGN BY: RAB</p>	<p>PROJECT NUMBER: 21800</p> <p>SHEET NO: S1-03</p>

Consultant:

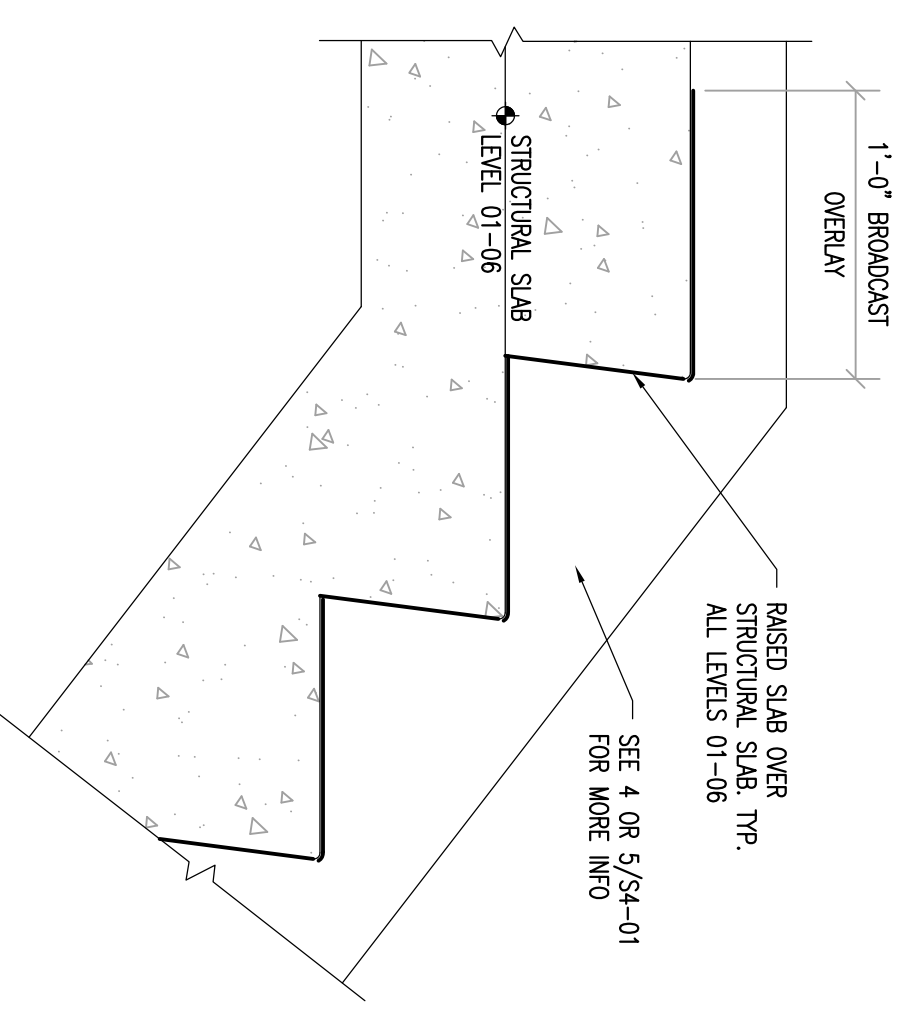
- STAIR TREAD NOSING**
KEY NOTES
- 1 - GOOD ALUMINUM NOSING
 - 2 - DERIVED ALUMINUM NOSING
 - 3 - OLD STEEL NOSING
 - 4 - NO NOSING

STRUCTURAL REPAIR
KEYED NOTES

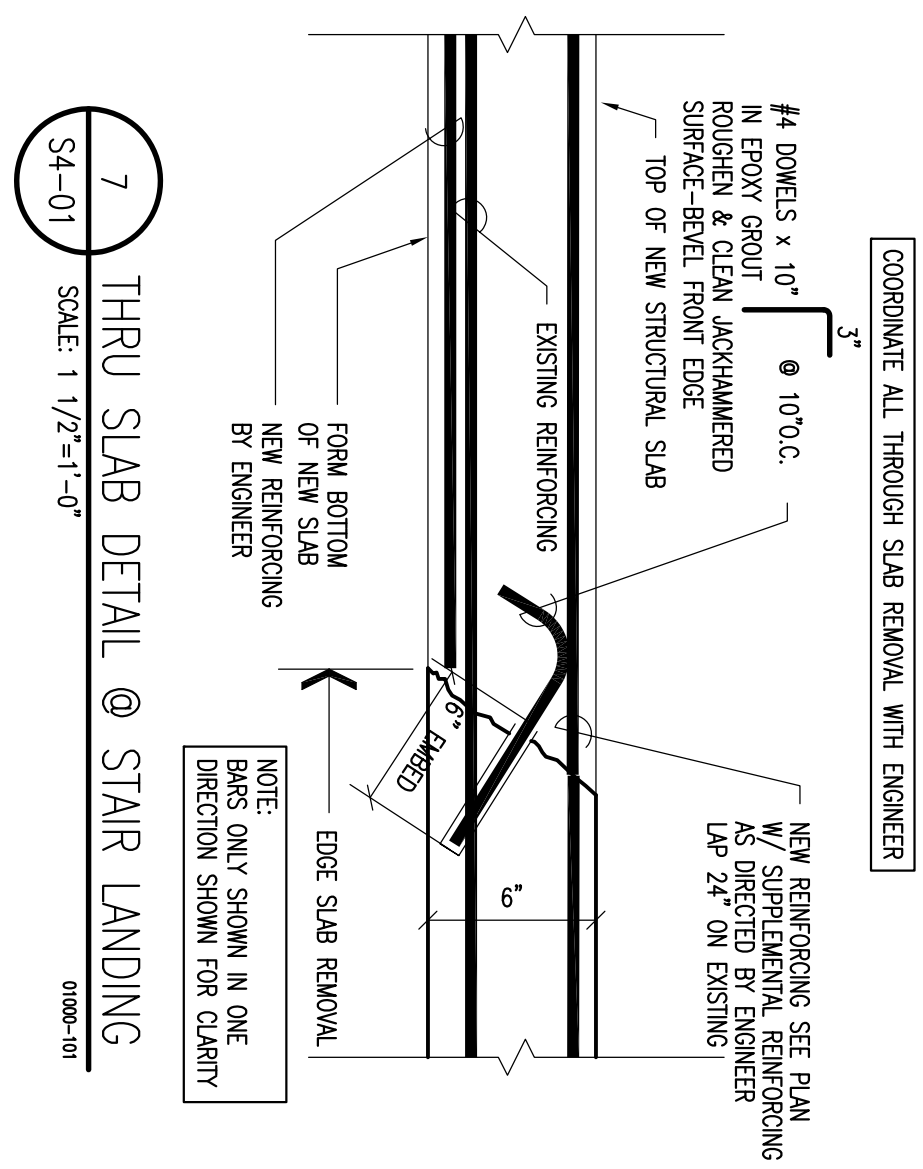
- 1 - ENTIRE TREAD, SPALLED OR CRACKED.
- 2 - CRIB GRouted & SPALLED AT RAILING POST.
- 3 - SPALLED UNDERSIDE OF LANDING AND STAIRS.
- 4 - SPALLED TOPSIDE OF LANDING.
- 5 - TOPSIDE TREAD SPALL.
- 6 - BEAM SPALL.
- 7 - WALL SPALL.
- 8 - WORK BY OWNER.



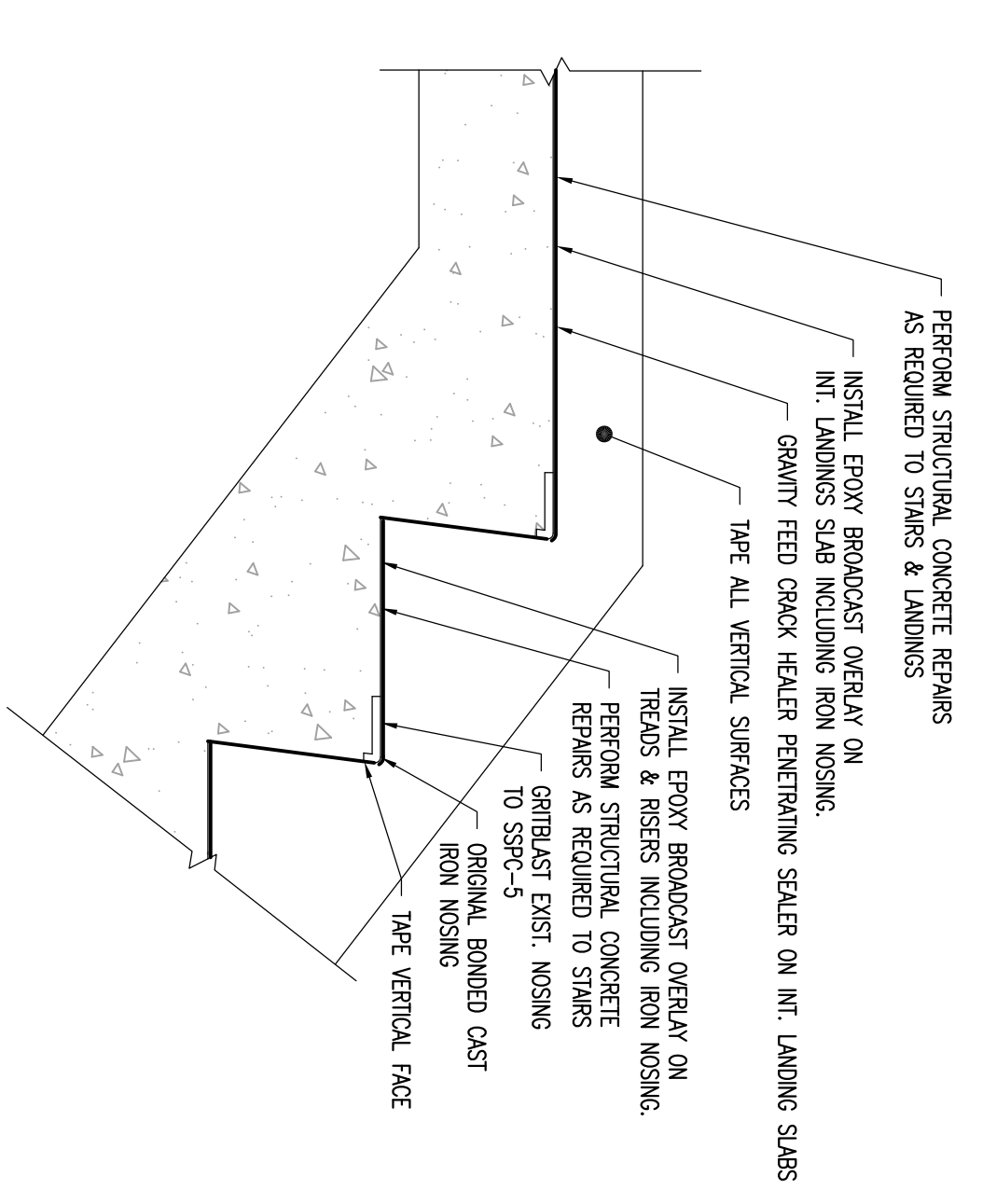
1 ENLARGED STAIR TOWER PLAN
SCALE: 1/4\"/>



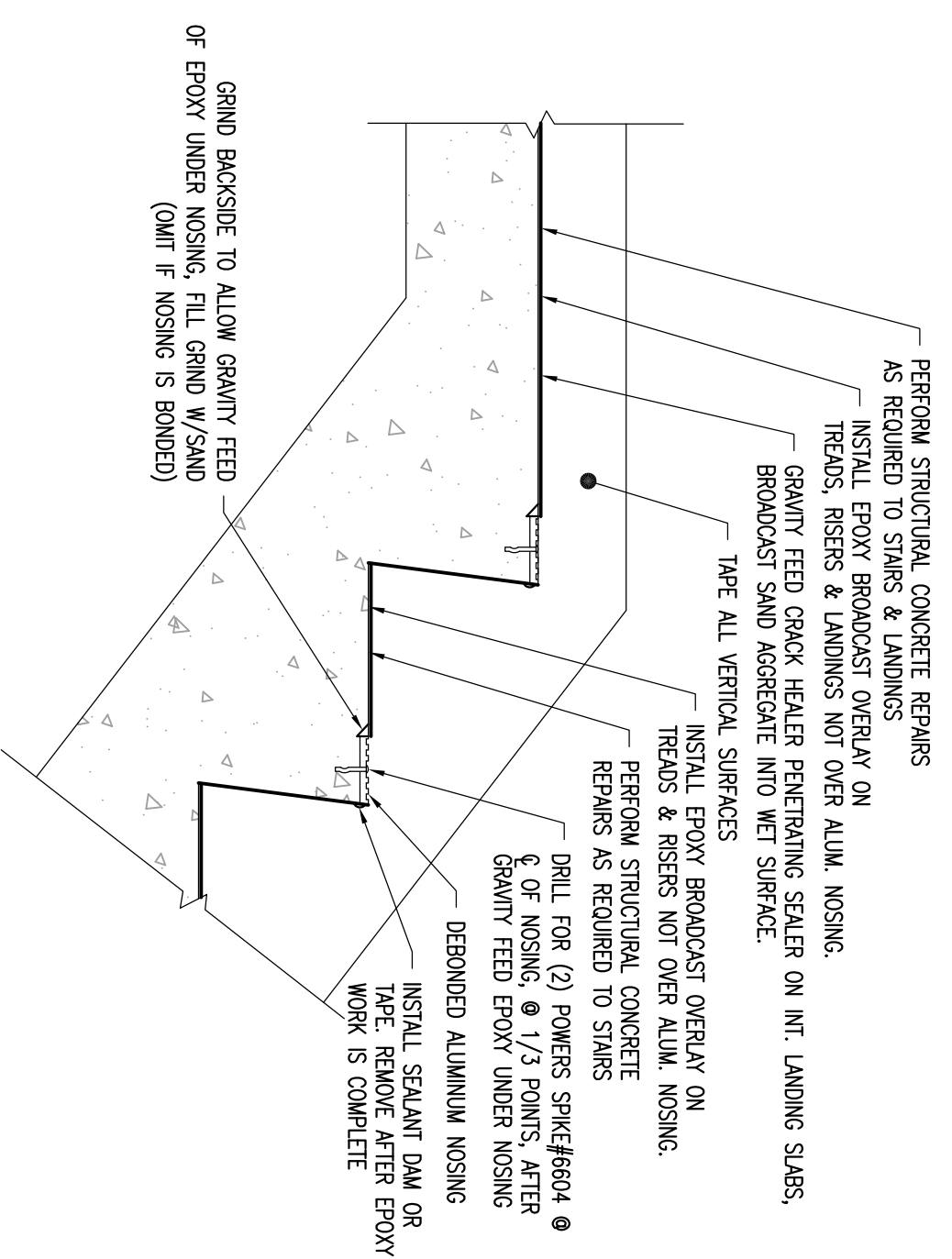
2 SE STAIR SECTION (FAIRCHILD)
SCALE: 1/4\"/>



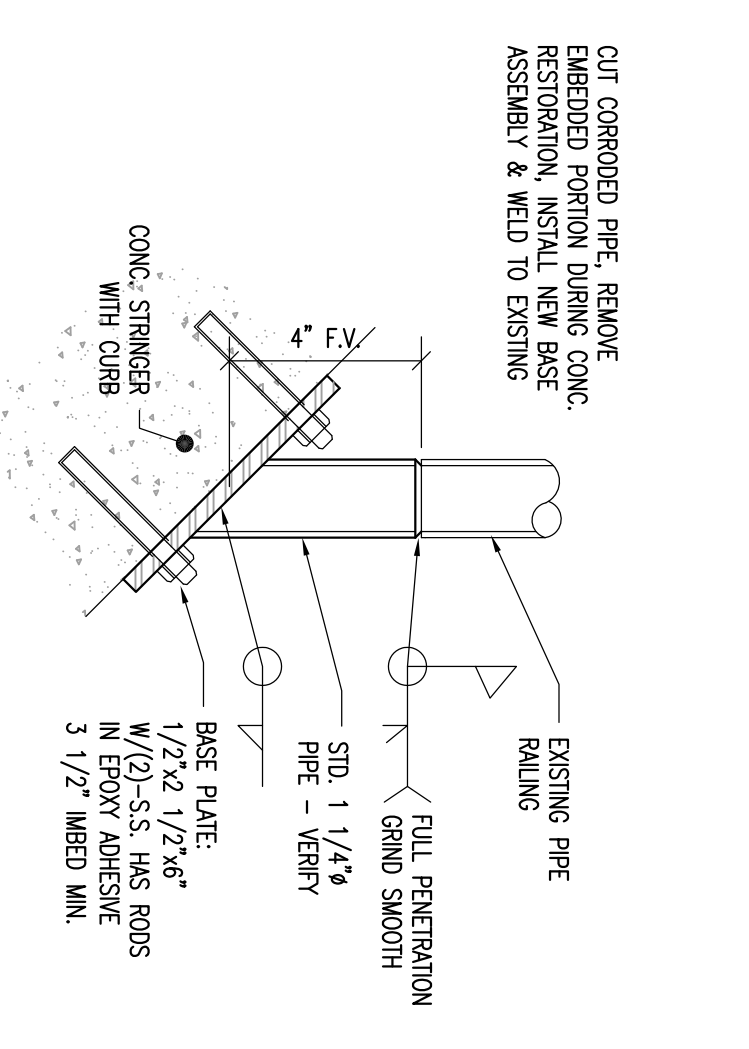
3 STAIR TREAD & RAISED SLAB
SCALE: 1 1/2\"/>



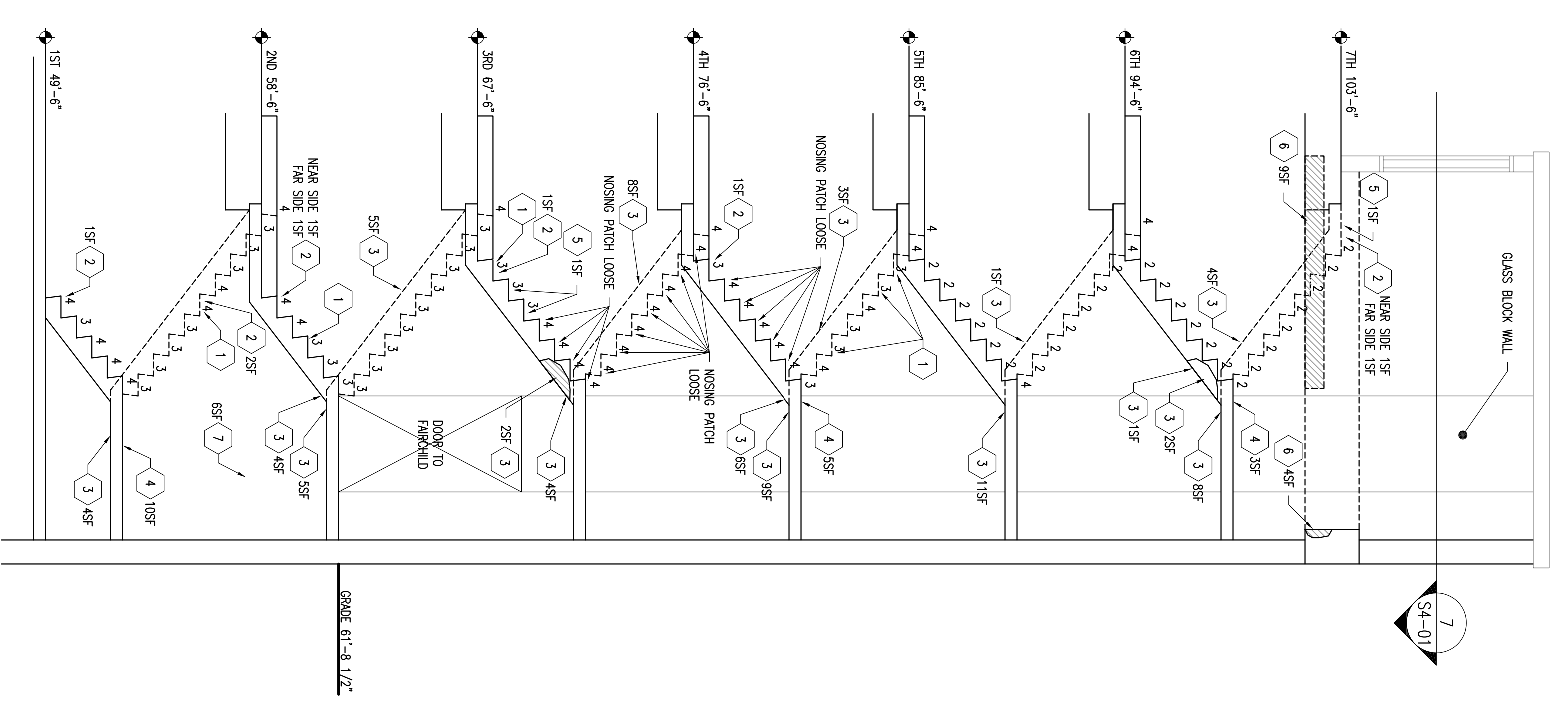
4 STAIR TREAD & LANDING W/ CAST NOSING
SCALE: 1 1/2\"/>



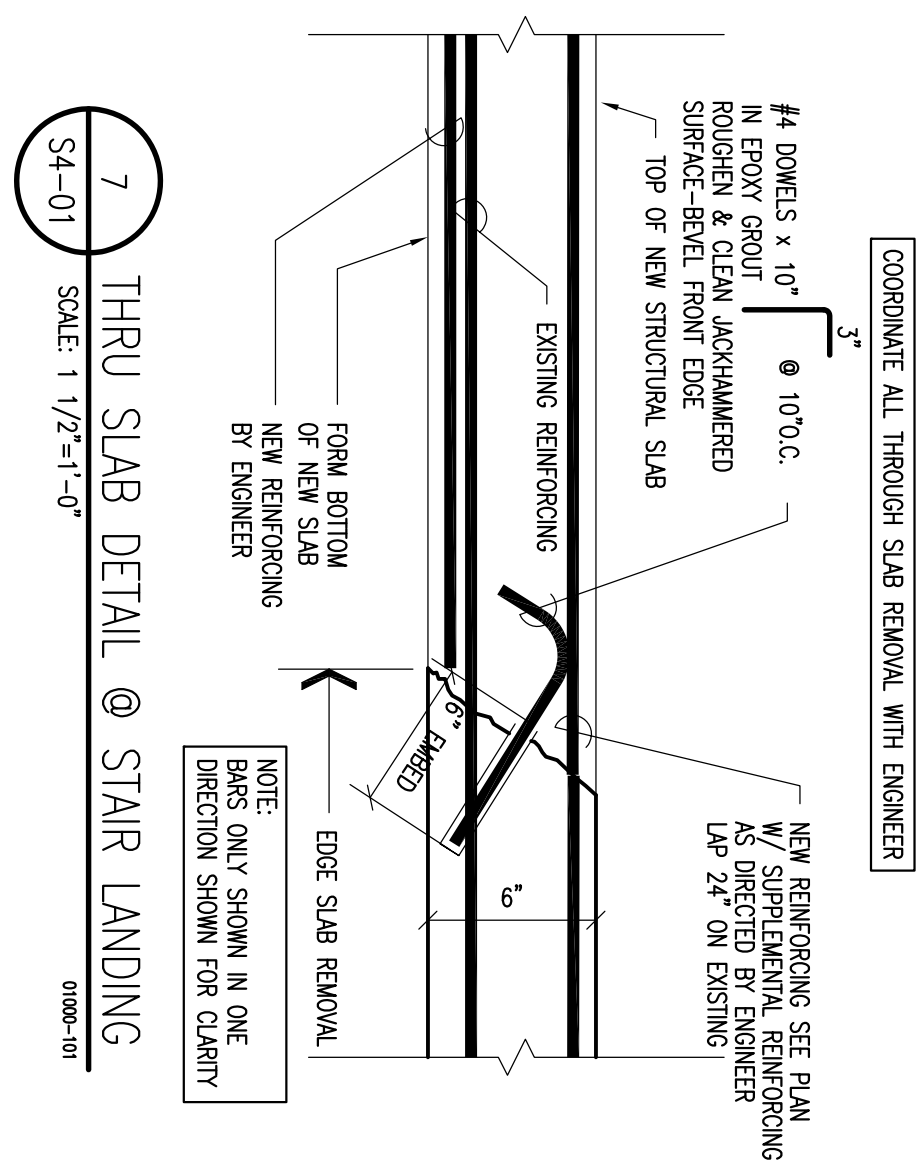
5 STAIR TREAD & LANDING W/ ALUM NOSING
SCALE: 1 1/2\"/>



6 RUSTED RAILING BASE REPLACEMENT
SCALE: 3/4\"/>



7 THRU SLAB DETAIL @ STAIR LANDING
SCALE: 1 1/2\"/>



8 COORDINATE ALL THROUGH SLAB REMOVAL WITH ENGINEER
SCALE: 1 1/2\"/>

2012	ISSUED FOR CONSTRUCTION	
Date	Revisions/Revisions	Symbol
2012 RESTORATION CAPITOL SQUARE SOUTH PARKING RAMP 113 S. HENRY STREET MADISON, WI 53703		
Drawing Title: STAIR SECTIONS, PLANS & DETAILS		
Project Number: 21003	Sheet No.:	S4-01
Drawn By: RAB		