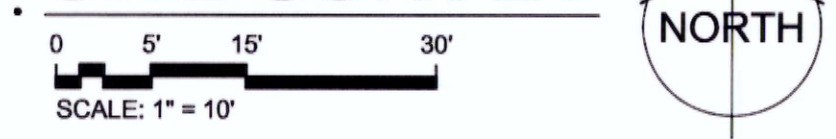
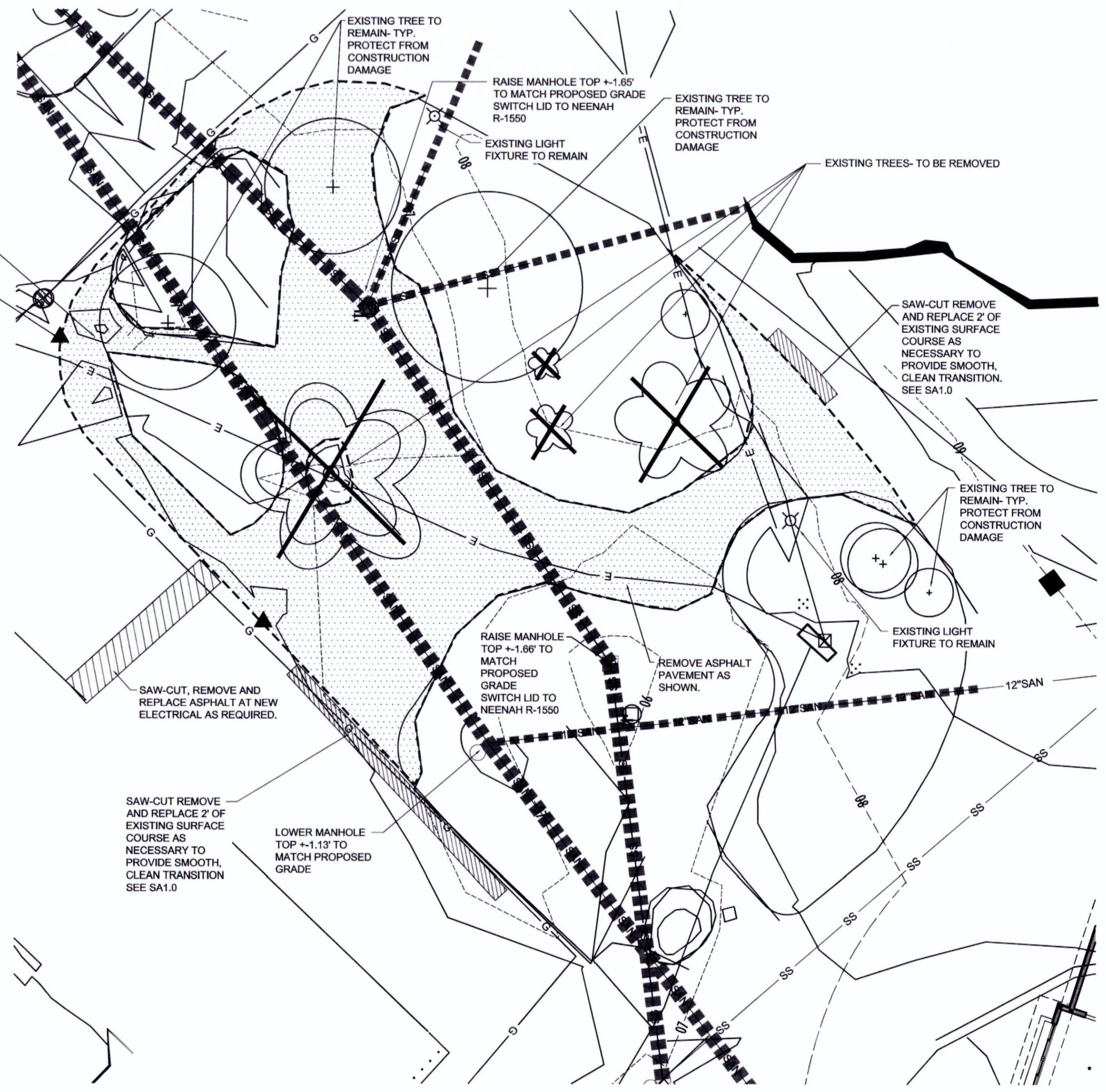


SITE SURVEY



SHEET INDEX	
SD1.0	SITE DEMOLITION PLAN
SA1.0	SITE LAYOUT/ GRADING PLAN
SA2.1	SHADE STRUCTURE PLANS
SA2.2	SHADE STRUCTURE PLANS
SA2.3	SHADE STRUCTURE PLANS
SA2.4	SHADE STRUCTURE PLANS
LS1.0	SITE PLANTING PLAN AND DETAILS
S1.3	STRUCTURAL FOUNDATION PLAN AND DETAILS
E1.0	ELECTRICAL SITE PLAN

Henry Vilas Zoo DINING PLAZA



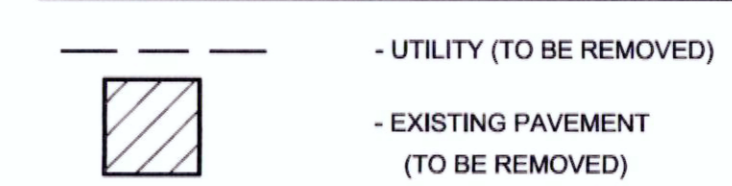
SITE DEMO & UTILITY PLAN



GENERAL DEMOLITION NOTES

- IT WILL BE THE RESPONSIBILITY OF THE CONTRACTOR TO OBSERVE ALL CITY, COUNTY AND STATE CODES AND REGULATIONS THAT APPLY TO THIS JOB.
- PROTECT AND SAVE EXISTING PLANT MATERIAL DURING CONSTRUCTION. DO NOT REMOVE ANY TREES THAT ARE MARKED "TO REMAIN" WITHOUT OWNER'S APPROVAL.
- ALL ASPHALT, CONCRETE, UNUSABLE SUB-BASE, AND SOIL THAT IS BEING REMOVED SHALL BE HAULED FROM SITE AT TIME OF DEMOLITION AND DISPOSED OF LEGALLY.
- DAMAGE TO EXISTING ITEMS NOTED TO REMAIN SHALL BE REPAIRED TO ORIGINAL AT THE CONTRACTORS EXPENSE.
- CONTRACTOR IS TO PROVIDE ALL SAFETY BARRIERS, FENCING ETC. AROUND CONSTRUCTION SITE AS REQUIRED BY LOCAL REGULATIONS.
- UNDERGROUND FACILITIES, STRUCTURES AND UTILITIES HAVE BEEN DRAWN FROM AVAILABLE RECORDS. THEREFORE, THE RELATIONSHIP BETWEEN PROPOSED WORK AND EXISTING FACILITIES, STRUCTURES AND UTILITIES MUST BE CONSIDERED APPROXIMATE AND IT IS THE CONTRACTOR'S RESPONSIBILITY TO DETERMINE THEIR EXACT LOCATION AND THE EXISTENCE OF ANY NOT SHOWN BY CONTACTING THE UTILITY LOCATOR SERVICES A MINIMUM OF 48 HOURS PRIOR TO THE COMMENCEMENT OF DIGGING OPERATIONS.
- EXISTING CONDITIONS SHALL BE VERIFIED BY DEMOLITION CONTRACTOR PRIOR TO COMMENCING WORK. DISCREPANCIES ARE TO BE REPORTED TO PROJECT MANAGER AND/OR ARCHITECT IMMEDIATELY.
- THE CONTRACTOR SHALL RESTORE TO THE ORIGINAL CONDITION, ADJACENT (OFF-SITE) PROPERTY AND PROPERTY OUTSIDE THE LIMITS OF WORK, DISTURBED BY HIS OPERATIONS.

LAYOUT LEGEND



WDM Architects P.A.
105 North Washington
Wichita, KS 67202-2815
T 316.262.4700
F 316.262.0002
wdmarchitects.com

**DINING PLAZA at the
Henry Vilas Zoo**

702 S. Randall Ave.,
Madison, Wisconsin

PRINTS ISSUED
FOR BID- NOV. 24, 2014

WDM No. **13046.1**
drawn: _____
checked: _____

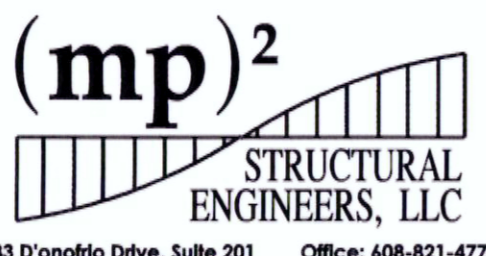
SITE DEMOLITION PLAN

SD1.0



WDM Architects P.A.
105 North Washington
Wichita, KS 67202-2815
T 316.262.4700
F 316.262.0002
wdmarchitects.com

ARCHITECT /
LANDSCAPE ARCHITECT



583 D'onofrio Drive, Suite 201
Madison, WI 53719
Office: 608-821-4770
Fax: 608-821-4780

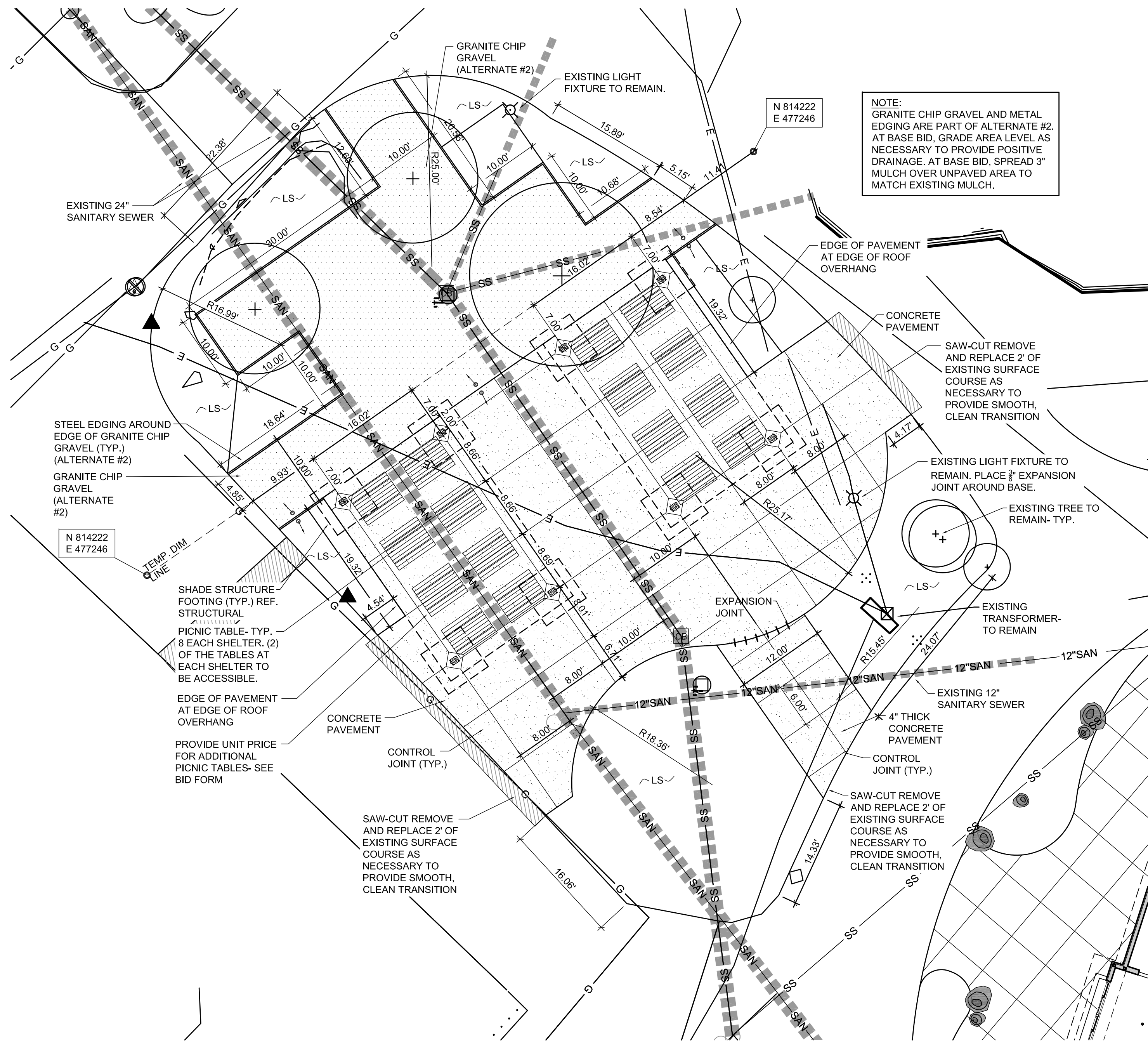
STRUCTURAL ENGINEER



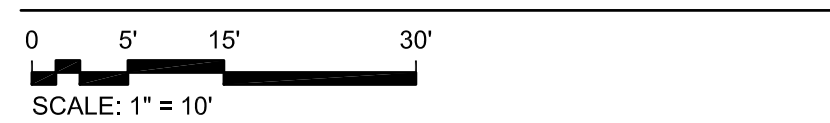
802 WEST BROADWAY, SUITE 312
MADISON, WISCONSIN 53713-1839
608.223.9600
FAX: 608.223.9601
www.kjww.com
STRUCTURAL | MECHANICAL | ELECTRICAL
TECHNOLOGY | MEDICAL EQUIPMENT SOLUTIONS
MECHANICAL, ELECTRICAL, TECHNOLOGY,
FIRE PROTECTION



TRANSPORTATION • MUNICIPAL
DEVELOPMENT • ENVIRONMENTAL
2901 International Lane Madison, WI 53704
608-242-7779 1-800-446-0679 Fax: 608-242-5664
© MSA PROFESSIONAL SERVICES
CIVIL ENGINEER

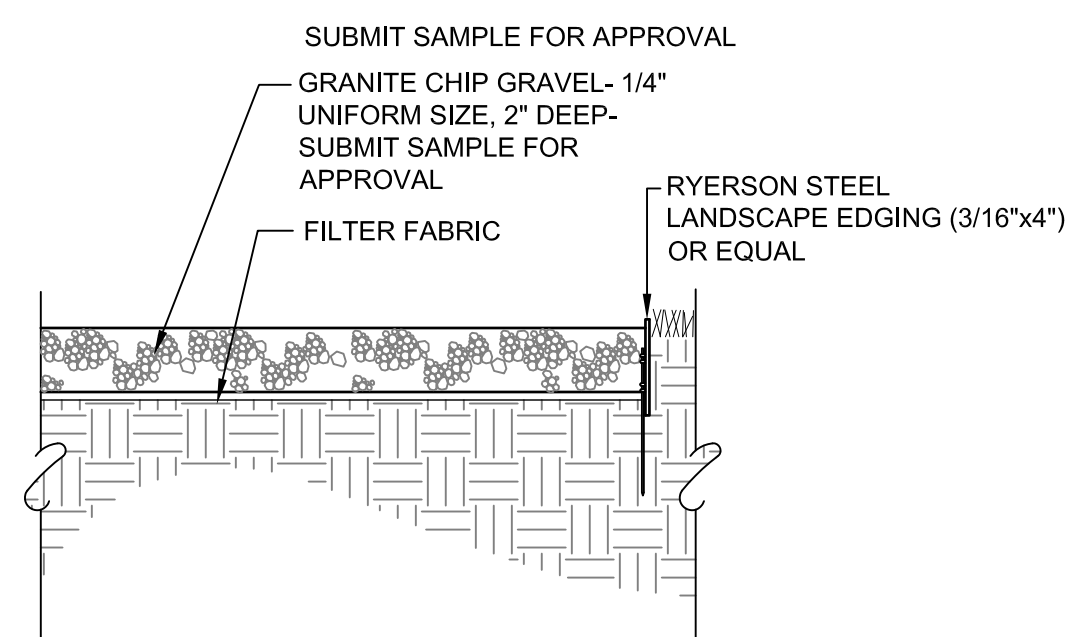


SITE LAYOUT PLAN



PICNIC TABLES:
AS MANUFACTURED BY WEBCOAT OR APPROVED EQUAL
855-361-4758
MODEL: T61NNVROLL & T61NNVROLLHDCP
COLOR- COORDINATE WITH ARCHITECT
PROVIDE UNIT PRICE FOR ADDITIONAL PICNIC TABLES- SEE BID FORM

ALTERNATES
ALTERNATE #1- PROVIDE CAST IN PLACE CONCRETE BASES WITH NATURAL STONE FOR POST BASES. DELETE I-ROCK C-TT GFRC FAUX STONE BASES.
ALTERNATE #2- INSTALL GRANITE CHIP GRAVEL WITH STEEL EDGING PER DETAIL THIS SHEET, AND PLANTING PER SHEET LS1.0.

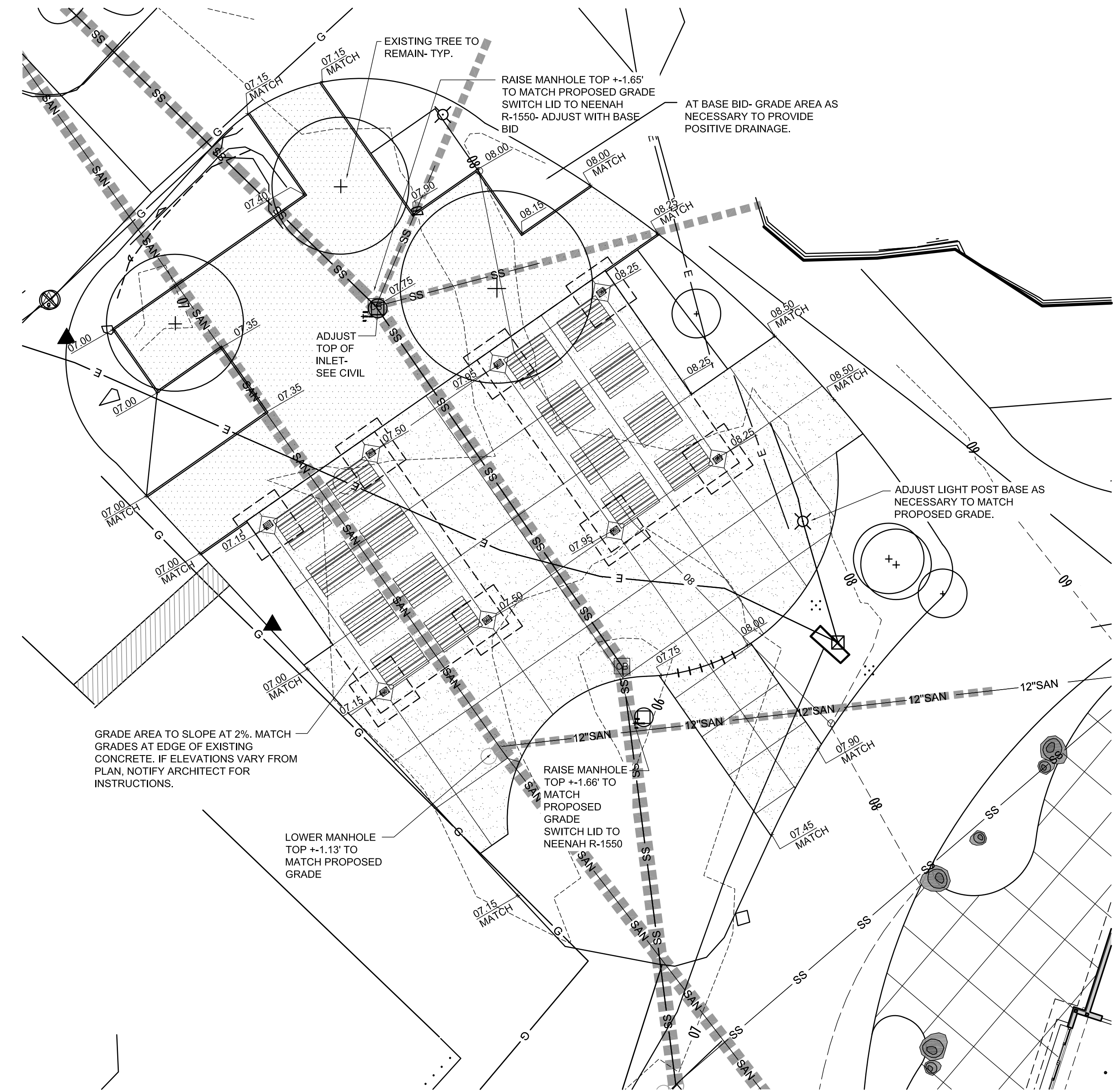


A GRANITE CHIP GRAVEL

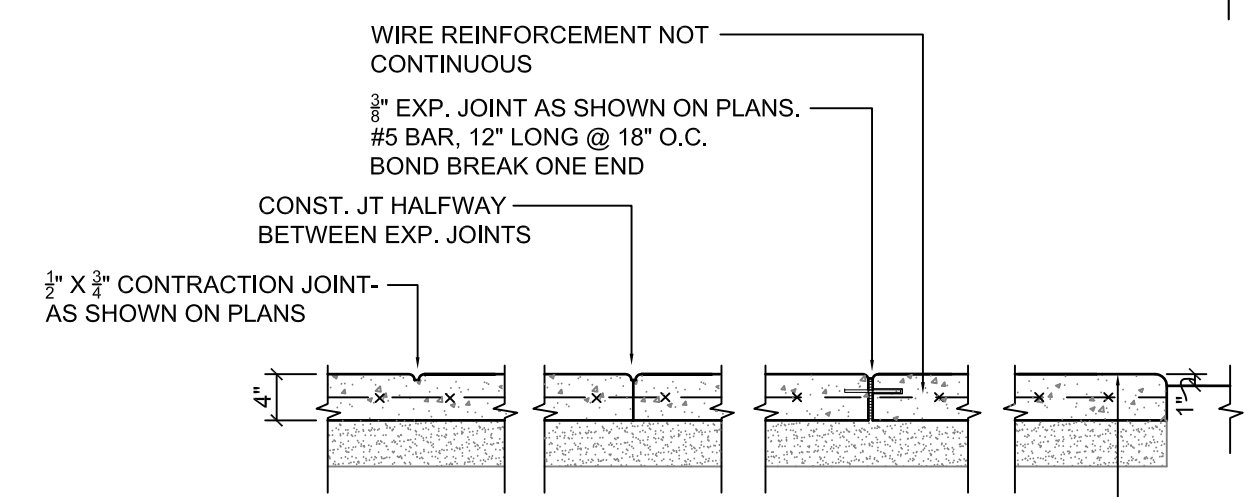
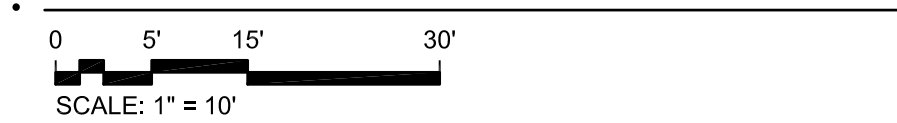
NTS

SITE PLAN NOTES

- PRIOR TO STARTING CONSTRUCTION THE CONTRACTOR SHALL BE RESPONSIBLE TO MAKE SURE THAT ALL REQUIRED PERMITS AND APPROVALS HAVE BEEN OBTAINED. NO CONSTRUCTION OR FABRICATION SHALL BEGIN UNTIL THE CONTRACTOR HAS RECEIVED AND THOROUGHLY REVIEWED ALL PLANS AND OTHER DOCUMENTS APPROVED BY ALL OF THE PERMITTING AUTHORITIES.
- ALL WORK SHALL BE PERFORMED IN ACCORDANCE WITH THESE PLANS, SPECIFICATIONS AND THE REQUIREMENTS AND STANDARDS OF THE LOCAL GOVERNING AUTHORITY. THE SOILS REPORT, IF AVAILABLE, AND RECOMMENDATIONS SET FORTH THEREIN ARE A PART OF THE REQUIRED CONSTRUCTION DOCUMENTS AND TAKE PRECEDENCE UNLESS SPECIFICALLY NOTED OTHERWISE ON THE PLANS. THE CONTRACTOR SHALL NOTIFY THE CONSTRUCTION MANAGER OF ANY DISCREPANCY THAT MAY EXIST BETWEEN SOILS REPORT AND PLANS.
- THE A.L.T.A. SURVEY SHALL BE CONSIDERED A PART OF THESE PLANS. THE GENERAL CONTRACTOR IS RESPONSIBLE FOR LOCATING IMPROVEMENTS PER THESE PLANS.
- UNDERGROUND FACILITIES, STRUCTURES AND UTILITIES HAVE BEEN DRAWN FROM AVAILABLE RECORDS. THEREFORE, THE RELATIONSHIP BETWEEN PROPOSED WORK AND EXISTING FACILITIES, STRUCTURES AND UTILITIES MUST BE CONSIDERED APPROXIMATE AND IT IS THE CONTRACTOR'S RESPONSIBILITY TO DETERMINE THEIR EXACT LOCATION AND THE EXISTENCE OF ANY NOT SHOWN BY CONTACTING THE UTILITY LOCATOR SERVICE A MINIMUM OF 48 HOURS PRIOR TO THE COMMENCEMENT OF DIGGING OPERATIONS. NO COMPENSATION SHALL BE PAID TO THE CONTRACTOR FOR DAMAGE AND REPAIR TO THESE FACILITIES CAUSED BY HIS WORK FORCE.
- ALL DIMENSIONS AND GRADES SHOWN ON THE PLANS SHALL BE FIELD VERIFIED BY THE CONTRACTOR PRIOR TO CONSTRUCTION. CONTRACTOR SHALL NOTIFY THE CONSTRUCTION MANAGER IF ANY DISCREPANCIES EXIST TO OBTAIN ANY NECESSARY CHANGES, PRIOR TO PROCEEDING WITH CONSTRUCTION. NO EXTRA COMPENSATION SHALL BE PAID TO THE CONTRACTOR FOR WORK HAVING TO BE REDONE DUE TO DIMENSIONS OR GRADES SHOWN INCORRECTLY ON THESE PLANS IF SUCH NOTIFICATION HAS NOT BEEN GIVEN.
- SEE PLANS FOR CONTROL POINT LOCATIONS AS BASIS FOR DIMENSIONS.
- ALL DIMENSIONS ARE FROM FRONT OF CURB UNLESS NOTED OTHERWISE.
- ALL WRITTEN DIMENSIONS SHALL TAKE PRECEDENCE OVER SCALED DIMENSIONS.
- SEE ARCHITECTURAL PLANS FOR BUILDING DIMENSIONS.
- CONTRACTOR IS TO PROVIDE ALL SAFETY BARRIERS, FENCING ETC. AROUND CONSTRUCTION SITE AS REQUIRED BY LOCAL REGULATIONS. CONTRACTOR SHALL USE SAFETY FENCE TO PROTECT CUSTOMERS FROM CONSTRUCTION ACTIVITIES.
- WORK WHICH WILL CAUSE THE CLOSING OF A STREET OR BLOCK A DIRECTION OF TRAVEL ON EXPRESSWAYS, PRINCIPAL ARTERIAL, MINOR ARTERIAL, AND COLLECTOR STREETS, SHALL REQUIRE A NOTICE OF CLOSURE TO BE SUBMITTED FORTY-EIGHT (48) HOURS IN ADVANCE OF THE STREET CLOSURE TO THE TRAFFIC ENGINEER. THE NOTICE OF CLOSURE SHALL SPECIFY THE PURPOSE OF CLOSURE, THE LOCATION, THE PLANNED DURATION AND THE HOURS OF THE DAY DURING WHICH THE STREET WILL BE CLOSED. THE CLOSURE SHALL BE SCHEDULED TO MINIMIZE INTERFERENCE WITH VEHICULAR AND PEDESTRIAN TRAFFIC.
- THE CONTRACTOR SHALL RESTORE TO THE ORIGINAL CONDITION, ADJACENT (OFF-SITE) PROPERTY DISTURBED BY HIS OPERATIONS.



SITE GRADING PLAN



B PAVEMENT JOINTS

NTS

C 4' CONCRETE PAVEMENT

NTS

SITE GRADING NOTES

- UNDERGROUND FACILITIES, STRUCTURES AND UTILITIES HAVE BEEN DRAWN FROM AVAILABLE RECORDS. THEREFORE, THE RELATIONSHIP BETWEEN PROPOSED WORK AND EXISTING FACILITIES, STRUCTURES AND UTILITIES MUST BE CONSIDERED APPROXIMATE AND IT IS THE CONTRACTOR'S RESPONSIBILITY TO DETERMINE THEIR EXACT LOCATION AND THE EXISTENCE OF ANY NOT SHOWN BY CONTACTING THE UTILITY LOCATOR SERVICE A MINIMUM OF 48 HOURS PRIOR TO THE COMMENCEMENT OF DIGGING OPERATIONS. NO COMPENSATION SHALL BE PAID TO THE CONTRACTOR FOR DAMAGE AND REPAIR TO THESE FACILITIES CAUSED BY HIS WORK FORCE. PROTECT ALL EXISTING UTILITIES TO REMAIN.
- THE CONTOUR INTERVAL FOR EXISTING AND PROPOSED CONTOURS IS 1'-0".
- PROPOSED SPOT ELEVATIONS AND CONTOURS ARE FOR FINISHED GRADES AND READ TO THE TOP OF PAVEMENT AND FINISHED SOIL GRADE.
- EXISTING CONDITIONS SHALL BE VERIFIED BY GENERAL CONTRACTOR. DISCREPANCIES ARE TO BE REPORTED TO ARCHITECT PRIOR TO CONSTRUCTION.
- TRAFFIC AFFECTED BY THE CONSTRUCTION ON THIS PROJECT SHALL BE HANDLED IN ACCORDANCE WITH THE LATEST EDITION OF THE LOCAL MANUAL OF UNIFORM TRAFFIC CONTROL DEVICES.
- THE CONTRACTOR SHALL BE RESPONSIBLE TO PROTECT GRADED AREAS FROM, AND AS NECESSARY RESTORE TO GRADE, ANY RUTS, WASHES OR OTHER CHANGES FROM THE DESIGN ELEVATIONS SHOWN HEREON, UNTIL GRADING WORK IS ACCEPTED BY THE OWNER AND ARCHITECT.
- PROTECT EXISTING TREES THAT ARE TO REMAIN WITH ORANGE SNOW FENCE AT THE TREES DRIP LINE UNTIL END OF CONSTRUCTION.
- STRIP TOPSOIL FROM CONSTRUCTION AREAS AND STOCKPILE IN LOCATION SHOWN ON THE PLAN OR AS AGREED UPON BY ARCHITECT. PLACE THE TOPSOIL IN A MANNER SO NOT TO BE COMPACTED OR CONFLICT WITH OTHER TRADES AND CONSTRUCTION PROCESS.
- ALL WEEDS, TRASH, DEBRIS, RUBBLE, BROKEN ASPHALT, ORGANIC MATERIAL (EXCLUDING TOPSOIL) AND REFUSE, OR ANY OTHER MATERIAL WHICH WOULD BE DELETERIOUS AS FILL MATERIAL OR INCAPABLE OR SUPPORTING THE BUILDING, VEHICULAR AND/OR OVERBURDEN LOADS TO BE IMPOSED SHALL BE CLEARED, GRUBBED OR EXCAVATED AS THE CASE MAY DICTATE PRIOR TO GRADING AND SHALL BE REMOVED FROM THE SITE AND DISPOSED OF LEGALLY.
- EROSION CONTROL MEASURES ARE TO BE UTILIZED PER LOCAL CODES AND, WHERE THE POSSIBILITY OF EROSION MAY OCCUR.
- ANY GRADING SHALL BE DONE TO INSURE POSITIVE DRAINAGE AWAY FROM BUILDINGS, FOUNDATIONS, AND STRUCTURES.
- ALL SIDEWALKS AND WALKING SURFACES (EXCEPT RAMPS) SHALL HAVE SLOPES NO GREATER THAN 1:21 (4.8%) IN THE DIRECTION OF TRAVEL OR CROSS SLOPES GREATER THAN 1:51 (1.96%). SLOPE OF THE FORMWORK IS TO BE VERIFIED BEFORE INSTALLATION OF PAVEMENT MATERIAL.
- THE CONTRACTOR SHALL RESTORE TO THE ORIGINAL CONDITION ADJACENT (OFF SITE) PROPERTY DISTURBED BY HIS OPERATIONS.
- ANY FILL MATERIAL REQUIRED TO BRING GRADES UP TO PROPOSED ELEVATIONS SHALL BE PROVIDED BY GENERAL CONTRACTOR.
- A MINIMUM OF 4" OF NON-COMPACTED TOPSOIL SHALL BE DISTRIBUTED THROUGHOUT ALL TURF AND PLANTING AREAS. ROUGH GRADING IS TO BE THE RESPONSIBILITY OF THE EARTHWORK CONTRACTOR. THE LANDSCAPE CONTRACTOR IS TO BE RESPONSIBLE FOR FINISH GRADING AND PREPARING LAWN AND PLANTING BEDS.



WDM Architects P.A.
105 North Washington
Wichita, KS 67202-2815
T 316.262.4700
F 316.262.0002
wdmarchitects.com

we do more

DINING PLAZA at the Henry Vilas Zoo

702 S. Randall Ave.,
Madison, Wisconsin

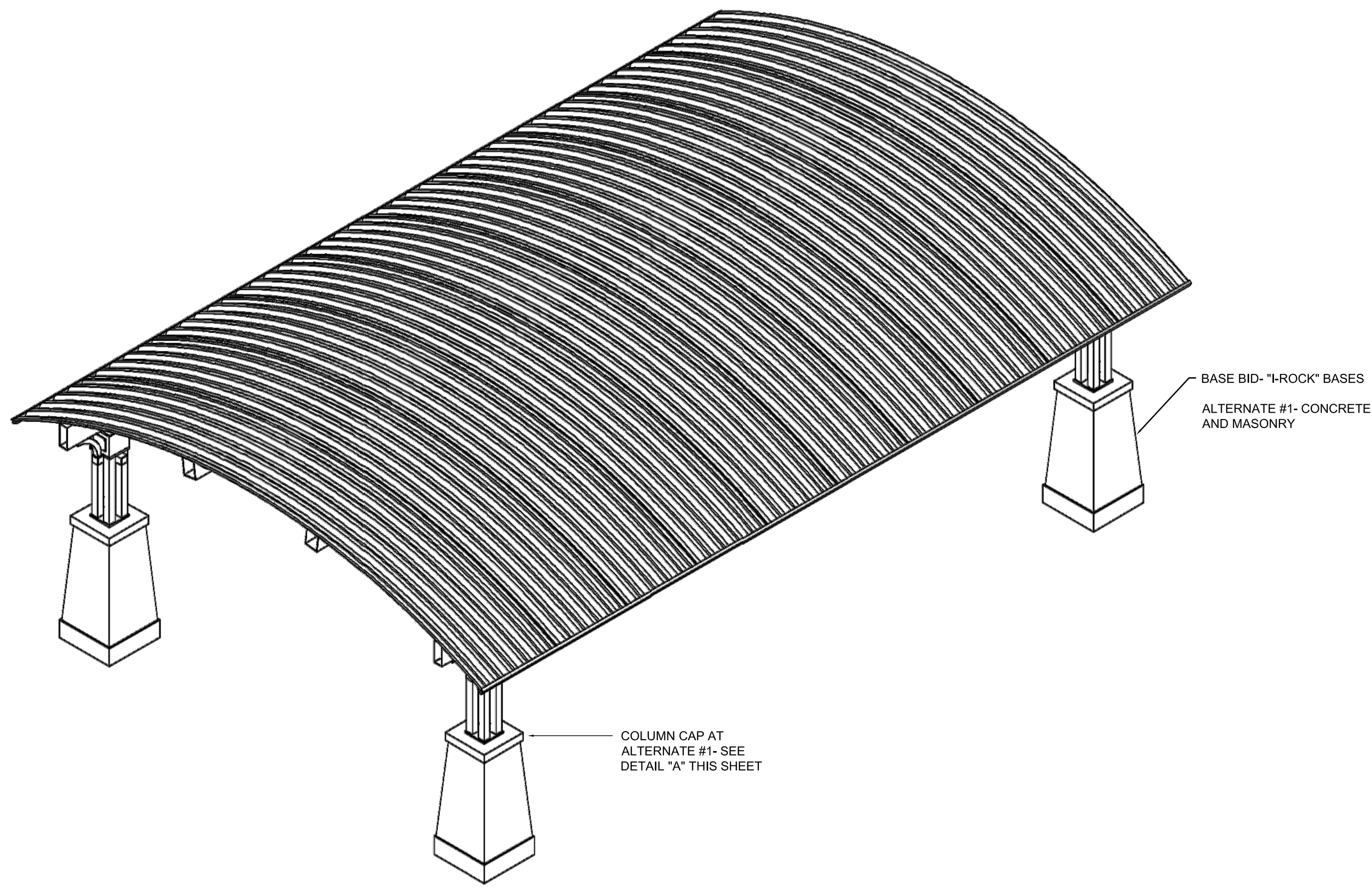
PRINTS ISSUED
FOR BID- NOV. 24, 2014

WDM No. drawn:
13046.1 checked:

SITE LAYOUT/ GRADING

SA1.0

© copyright WDM Architects P.A.

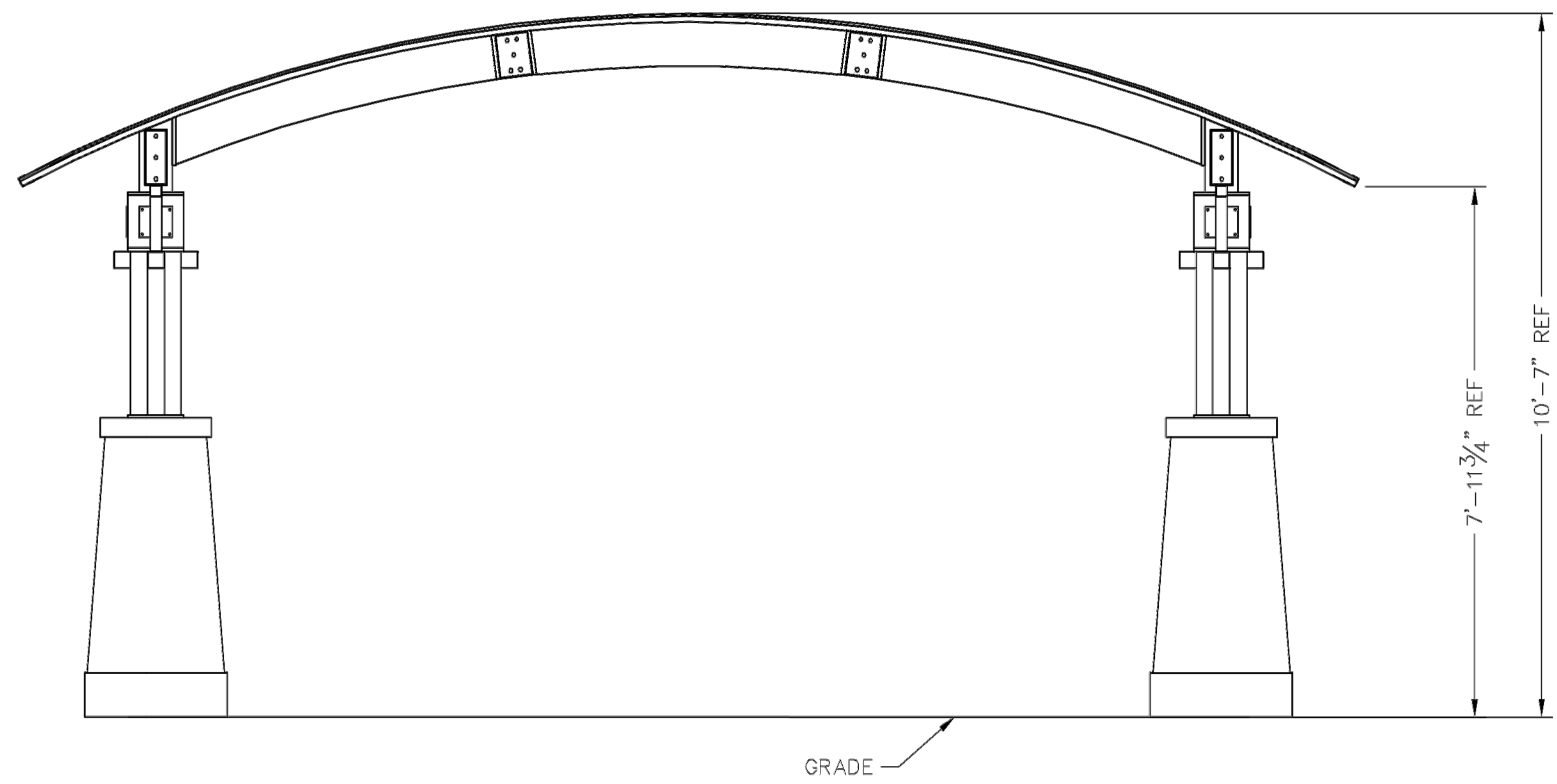
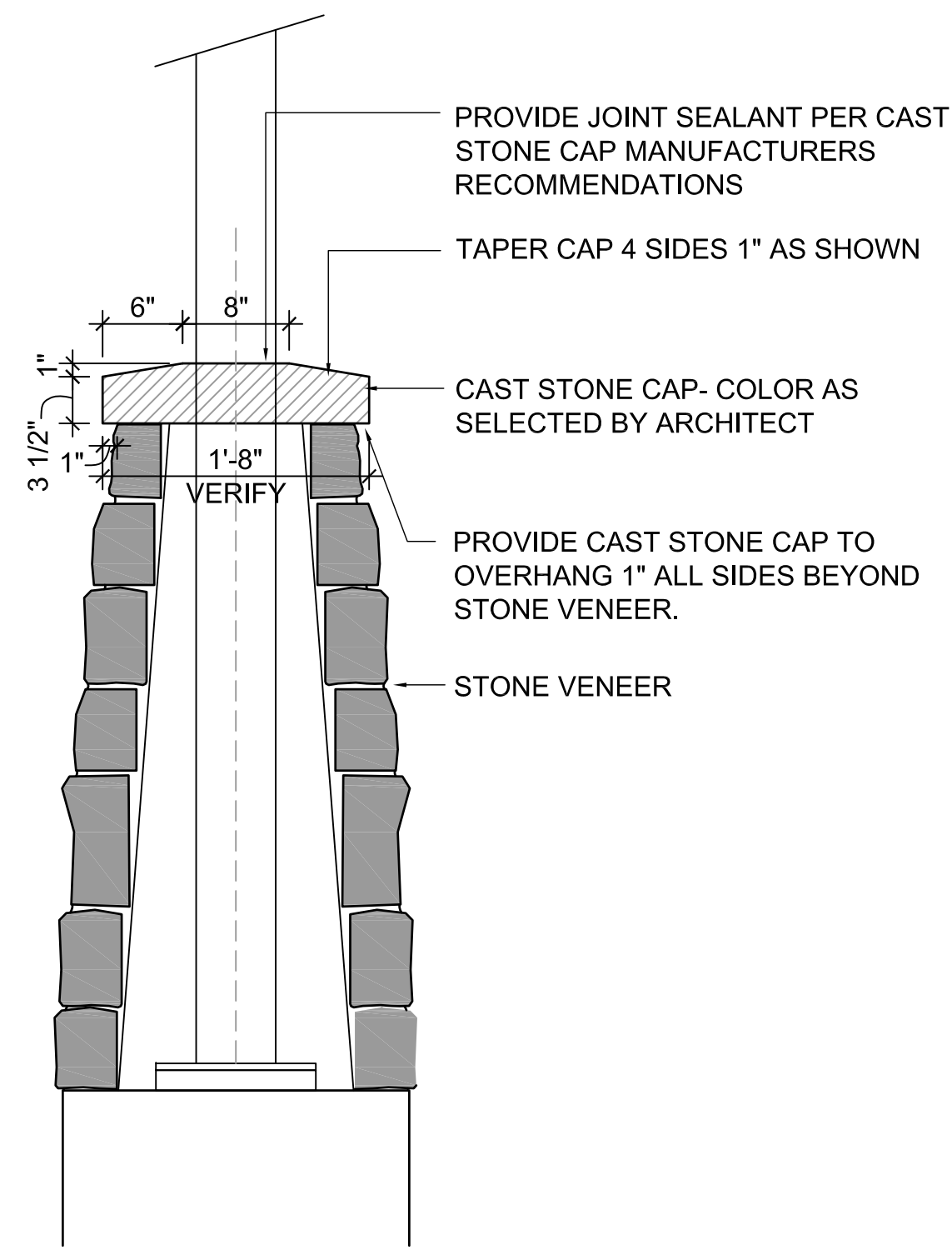


SHELTER AS MANUFACTURED BY OR APPROVED EQUAL:
 ICON SHELTER SYSTEMS
 1-800-748-0985
 20'X30' CRAFTSMAN BARREL VAULT
 CC3 POSTS
 I-ROCK BASES AT BASE BID ONLY (CONCRETE BASE WITH
 STONE MASONRY AT ALTERNATE #1)
 ROOF DECK: MEGA-RIB
 ROOF COLOR: ROMAN BLUE
 FRAMING/ POST COLOR: ASH GRAY
 CONTRACTOR TO SUBMIT SHOP DRAWINGS OF STRUCTURE.

PRELIMINARY: NOT FOR
 CONSTRUCTION

ICON
 Shelter Systems Inc
 DISTINCTIVE STEEL SHELTERS
 WWW.ICONSHelters.COM
 COPYRIGHT 2004, ICON SHELTER
 SYSTEMS, INC.
 1455 LINCOLN AVE.
 HOLLAND MI, 49423
 616.396.0919
 800.748.0985
 616.396.0944 FX

Elevation



A COLUMN CAP AT ALTERNATE #1
 3/4" = 1' - 0"
 0 8" 1'-4"

DRAWN BY:	LB
DATE:	3/21/13
JOB NO.:	STANDARD
REVISION:	
BUILDING TYPE:	BV20x30G
PROJECT NAME:	-20-100-30
SHEET	1.0

DWG: \\icon01\Company\Engineering\Standards\Shelters\BV\20X30\G-P5-20-100-30~24169.DWG

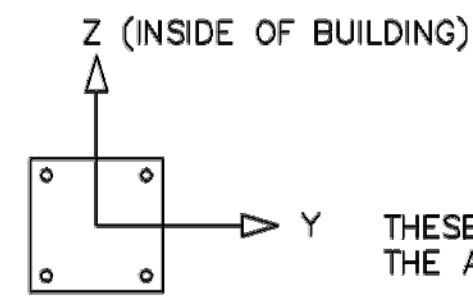
WDM
 ARCHITECTS
 WDM Architects P.A.
 105 North Washington
 Wichita, KS 67202-2815
 T 316.262.4700
 F 316.262.0002
 wdmarchitects.com
 we do more

**DINING PLAZA at the
 Henry Vilas Zoo**
 702 S. Randall Ave.,
 Madison, Wisconsin

PRINTS ISSUED
 FOR BID- NOV. 24, 2014

WDM No. drawn:
13046.1 checked:
 SITE LAYOUT/ GRADING

SA2.1



THESE FOUNDATION LOADS ARE FOR ESTIMATING PURPOSE ONLY.
THE ACTUAL LOADS WILL BE DETERMINED IN THE FINAL ENGINEERING

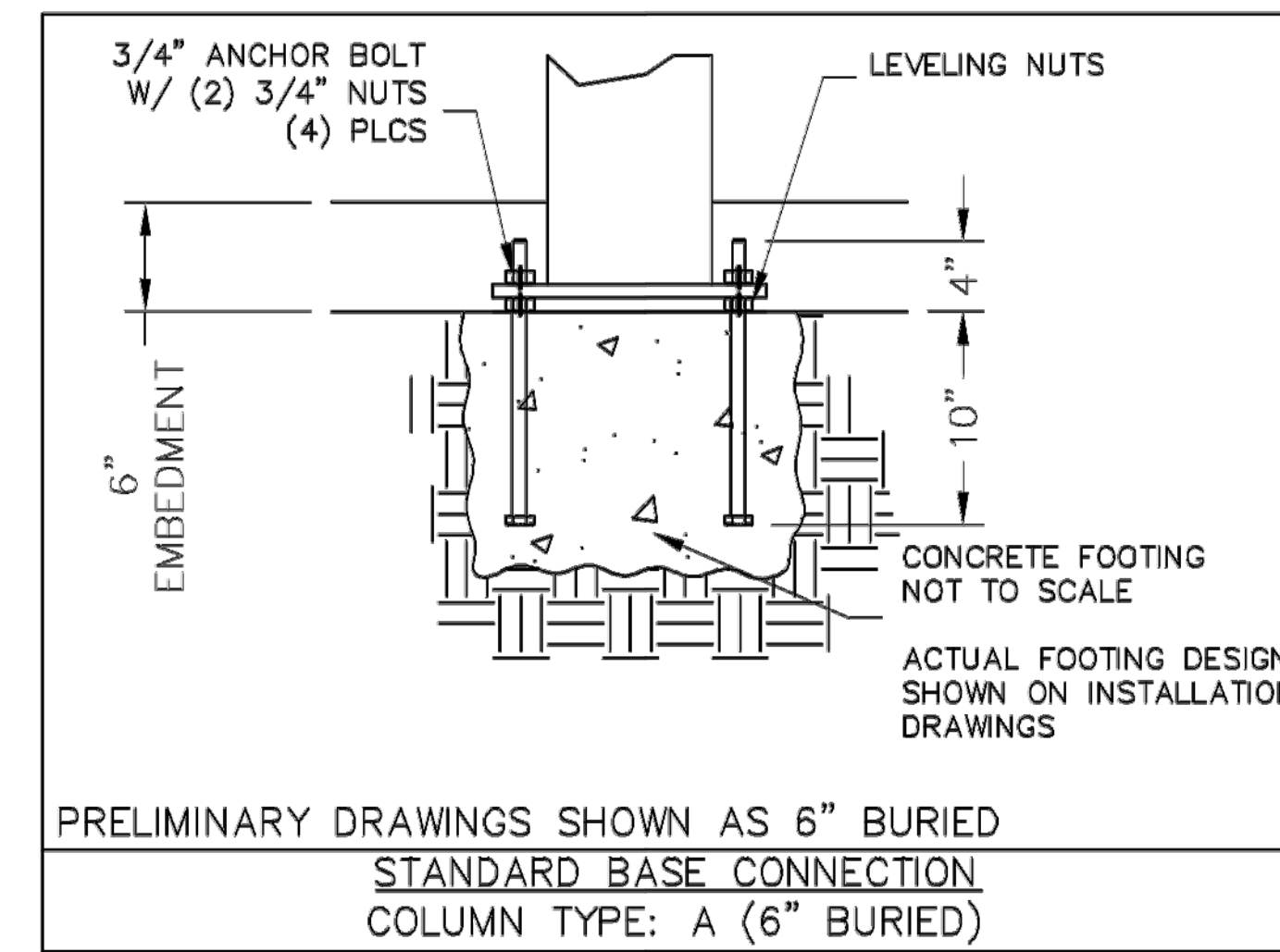
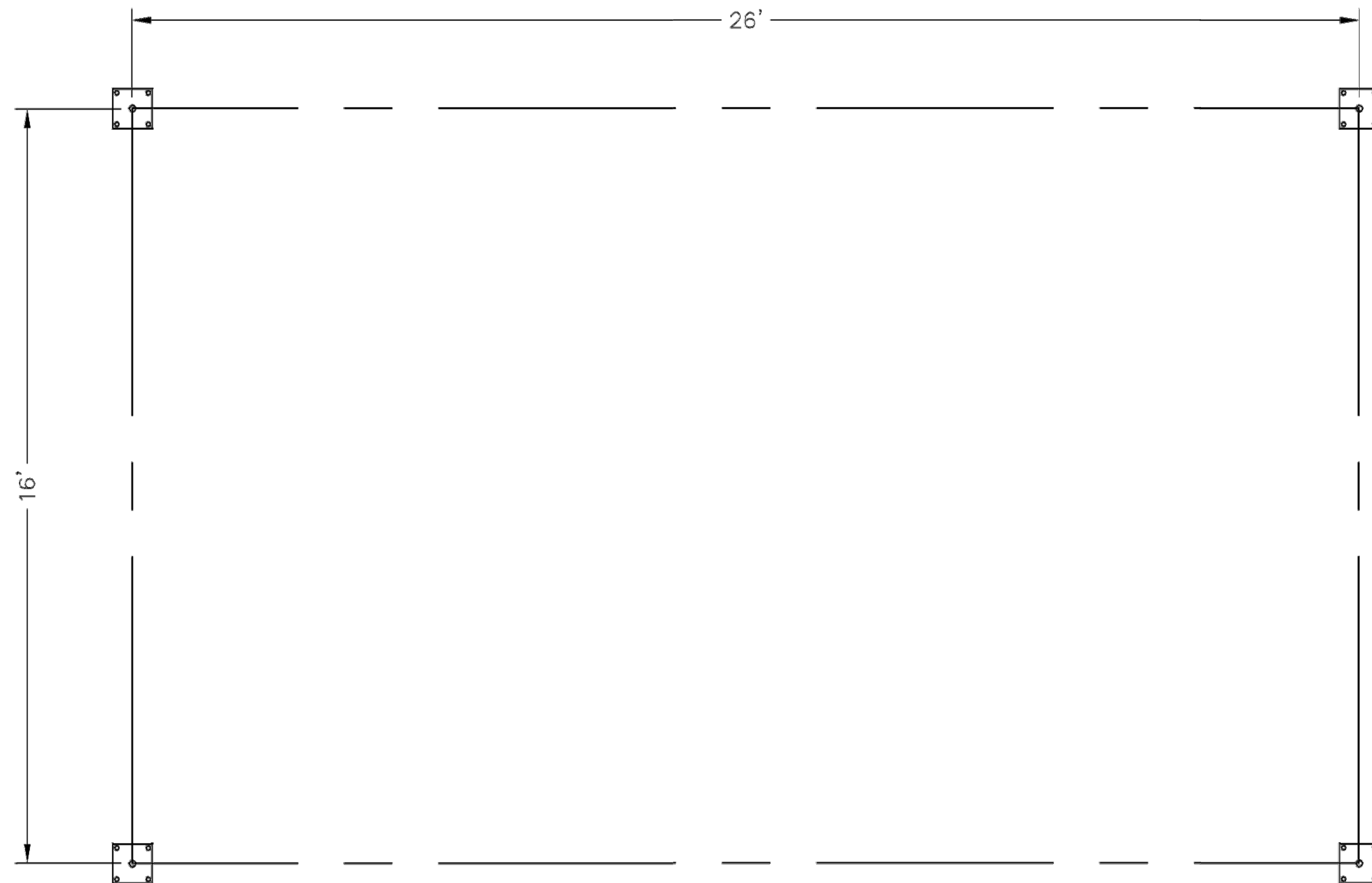
LOADS TO FOUNDATION (KIPS, IN-KIPS)	FOUNDATION LOADS				
	AXIAL (Fx)	SHEAR (Fy)	SHEAR (Fz)	MOMENT (My)	MOMENT (Mz)
DL	1.41	-0.01	0.03	-2.99	-0.35
SL	3.44	-0.03	0.07	-7.50	-1.16
W-UPLIFT	-2.26	-0.21	-0.29	31.29	-24.99
W-FY	-2.23	-0.26	-0.29	31.19	-26.46
W-FZ	0.77	0.00	0.38	-40.32	-0.05
E-FY	0.02	-0.38	0.00	0.24	-40.53
E-Z	-0.03	0.00	-0.37	39.80	-0.01

NOTES:

- TABLE SHOWS UNFACTORED SERVICE LOADS
- A FOUNDATION DESIGN HAS NOT BEEN PERFORMED BY ICON SHELTER SYSTEMS INC.
- A LICENSED ENGINEER FAMILIAR WITH SOIL CONDITIONS AT CONSTRUCTION SITE MUST PERFORM A FOUNDATION DESIGN.
- THE STRUCTURE HAS BEEN ENGINEERED AS AN OPEN STRUCTURE.
- CONSULT ICON SHELTER SYSTEMS INC. IF THE STRUCTURE IS TO BE ENCLOSED.
- COORDINATES ARE LOCAL TO THE COLUMN

DEFINITIONS:

- DL = SERVICE LEVEL DEAD LOAD REACTION WITH THE GREATEST AXIAL LOAD
- SL = SERVICE LEVEL SNOW LOAD REACTION WITH THE GREATEST AXIAL LOAD
- W-U = SERVICE LEVEL WIND LOAD REACTION WITH THE GREATEST UPLIFT LOAD
- W-Y = SERVICE LEVEL WIND LOAD REACTION WITH THE GREATEST MAGNITUDE OF SHEAR IN THE LOCAL Y DIRECTION
- W-Z = SERVICE LEVEL WIND LOAD REACTION WITH THE GREATEST SHEAR VALUE ACTING IN THE SAME DIRECTION AS THE DL SHEAR LOAD
- E-Y = SERVICE LEVEL SEISMIC LOAD REACTION WITH THE GREATEST MAGNITUDE OF SHEAR IN THE LOCAL Y DIRECTION
- E-Z = SERVICE LEVEL SEISMIC LOAD REACTION WITH THE GREATEST MAGNITUDE OF SHEAR IN THE LOCAL Z DIRECTION



PRELIMINARY DRAWINGS SHOWN AS 6" BURIED
STANDARD BASE CONNECTION
COLUMN TYPE: A (6" BURIED)

PRELIMINARY: NOT FOR CONSTRUCTION

ICON Shelter Systems Inc
DISTINCTIVE STEEL SHELTERS
WWW.ICONSHELTERS.COM
COPYRIGHT 2004, ICON SHELTER SYSTEMS, INC.
1455 LINCOLN AVE.
HOLLAND MI, 49423
616.396.0919
800.748.0985
616.396.0944 FX

Anchor Bolt Layout

DRAWN BY:	LB
DATE:	3/21/13
JOB NO.:	STANDARD
REVISION:	
BUILDING TYPE:	BV20x30G
PROJECT NAME:	-20-100-30

SHEET
2.0

DWG: \\Icon01\Company\Engineering\Standards\Shelters\BV20x30\G-P5-20-100-30\Drawings\Preliminary\BV20x30G-P5-20-100-30~24169.DWG



WDM Architects P.A.
105 North Washington
Wichita, KS 67202-2815
T 316.262.4700
F 316.262.0002
wdmarchitects.com

we do more

DINING PLAZA at the Henry Vilas Zoo

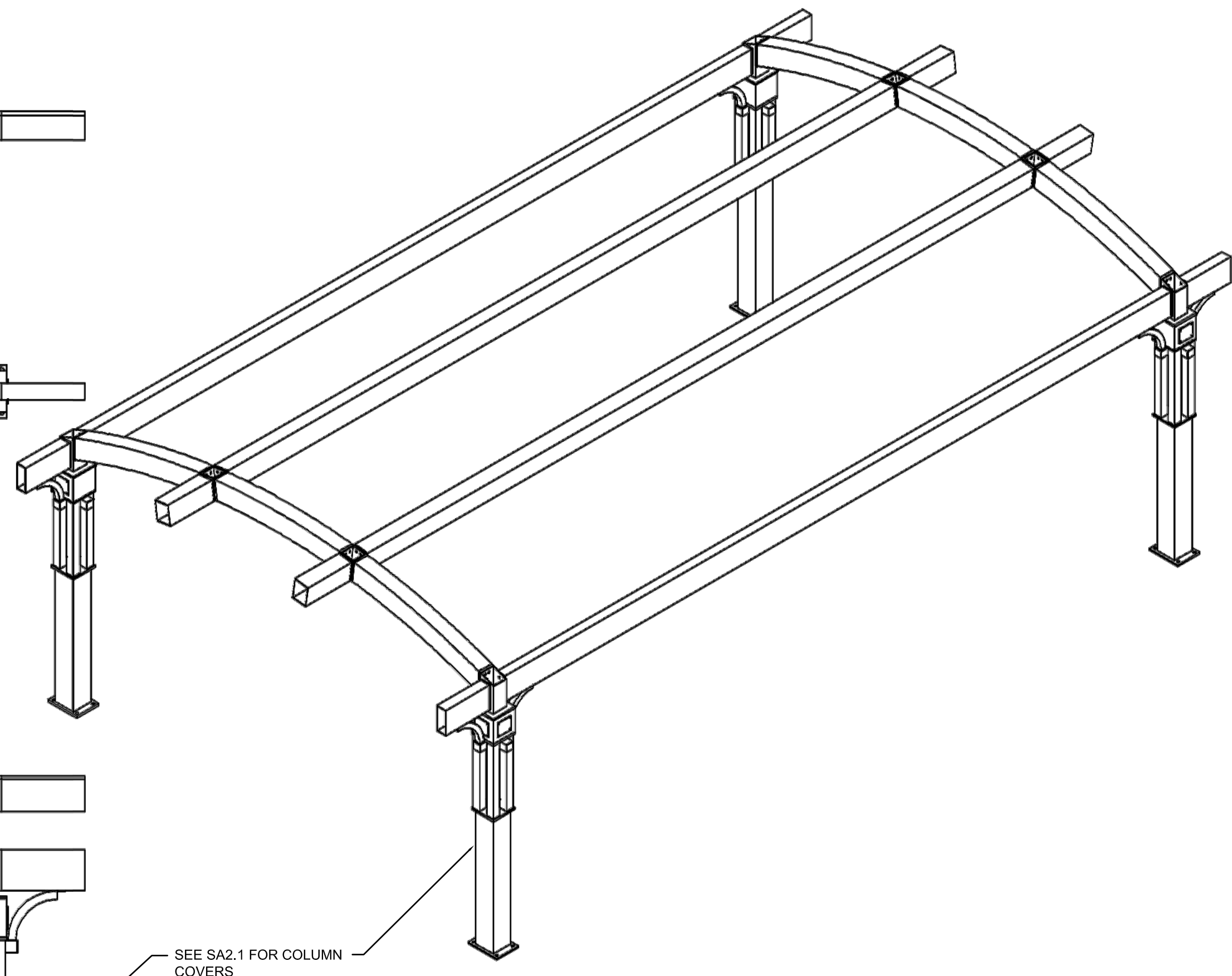
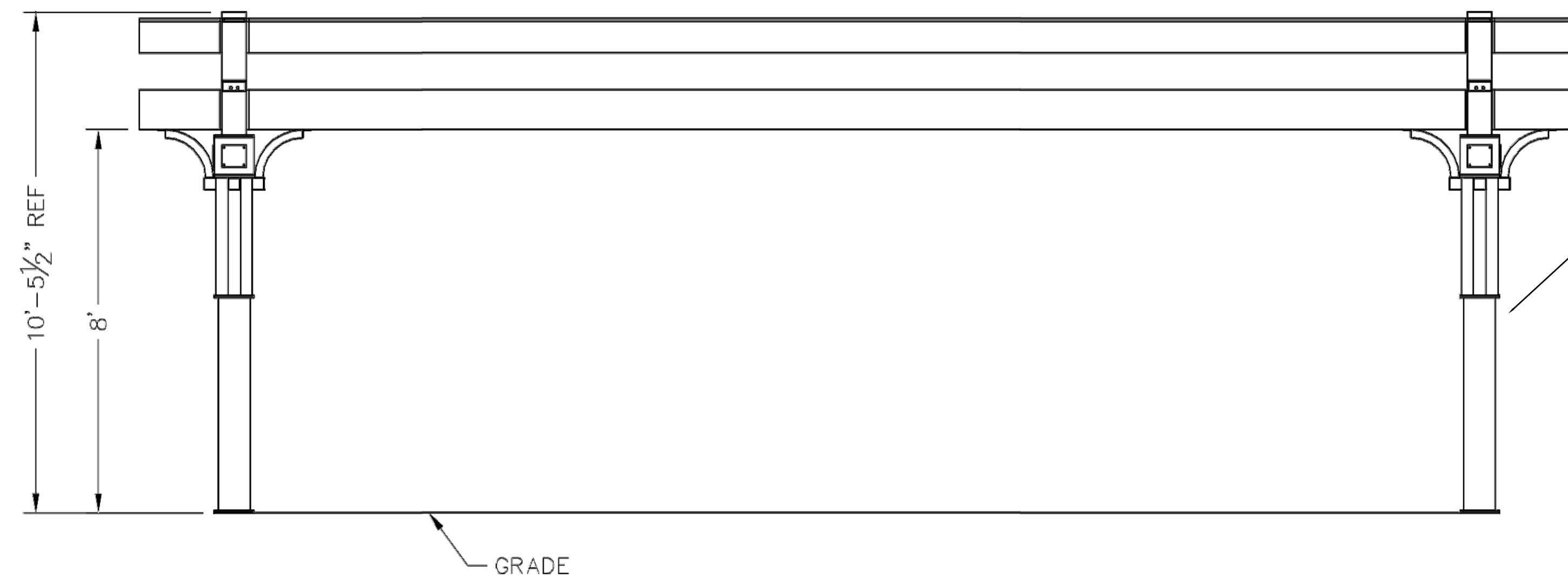
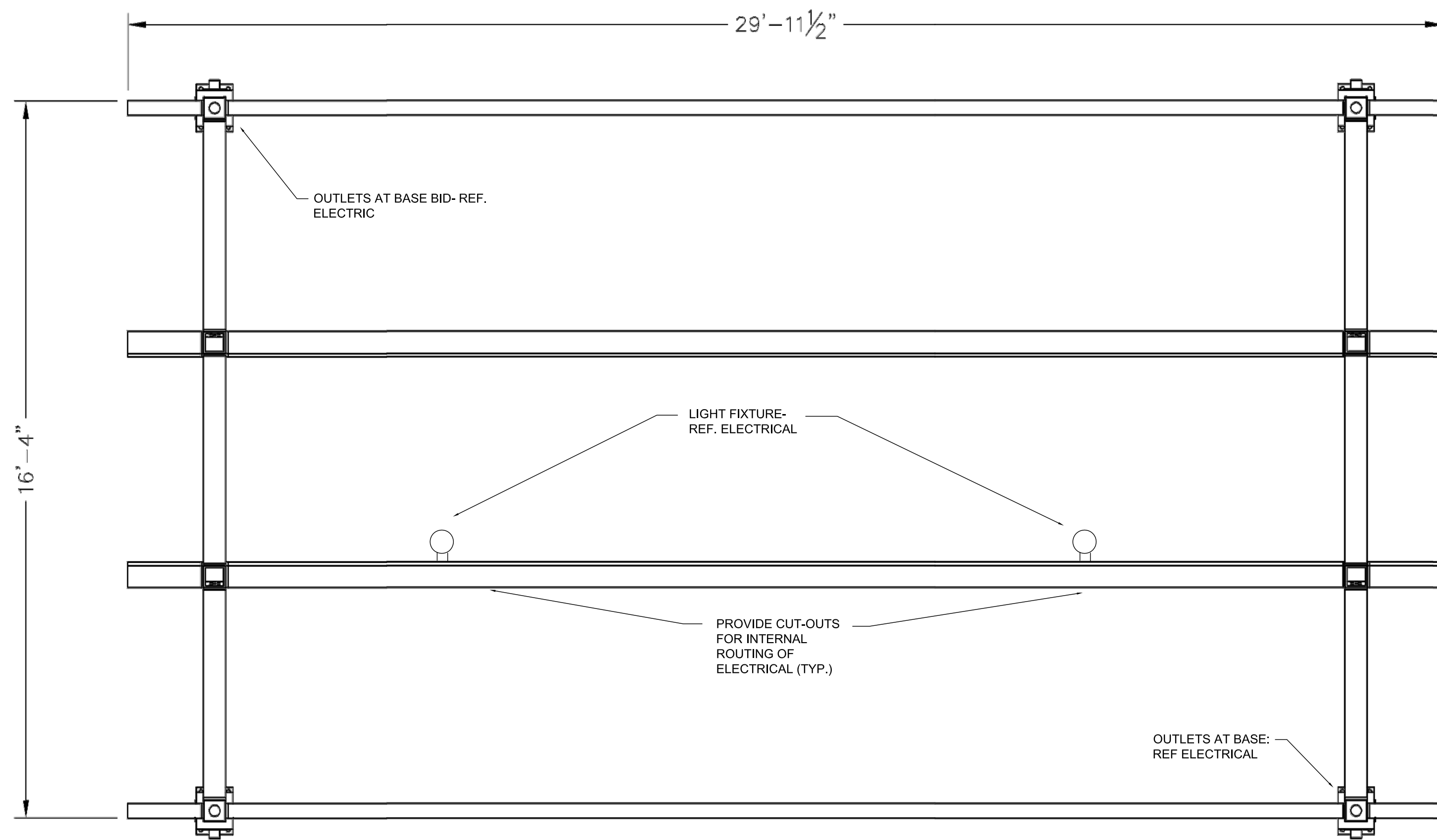
702 S. Randall Ave.,
Madison, Wisconsin

PRINTS ISSUED
FOR BID- NOV. 24, 2014

WDM No. 13046.1
drawn: checked:

SITE LAYOUT/ GRADING

SA2.2



PRELIMINARY: NOT FOR CONSTRUCTION

ALL STRUCTURAL COMPONENTS WILL BE:
 TUBE: ASTM A500 GRADE B
 PLATE: ASTM A36
 BOLTS: ASTM A325
 NUTS: ASTM A563
 WELDING: GMAW

NOTE:
 COLUMN SIZE: HSS 6x6x3/16

ICON
 Shelter Systems Inc
 DISTINCTIVE STEEL SHELTERS
 WWW.ICONSHELTERS.COM
 COPYRIGHT 2004, ICON SHELTER SYSTEMS, INC.
 1455 LINCOLN AVE.
 HOLLAND MI, 49423
 616.396.0919
 800.748.0985
 616.396.0944 FX

Frame

DRAWN BY:	LB
DATE:	3/21/13
JOB NO.:	
STANDARD:	
REVISION:	
BUILDING TYPE:	BV20x30G
PROJECT NAME:	-20-100-30

SHEET
 3.0

DWG: \\Icon01\Company\Engineering\Standards\Shelters\BV_20x30\G-P5-20-100-30\Drawings\Preliminary\BV20x30G-P5-20-100-30~24169.DWG

wdm
 ARCHITECTS
 WDM Architects P.A.
 105 North Washington
 Wichita, KS 67202-2815
 T 316.262.4700
 F 316.262.0002
 wdmarchitects.com
 we do more

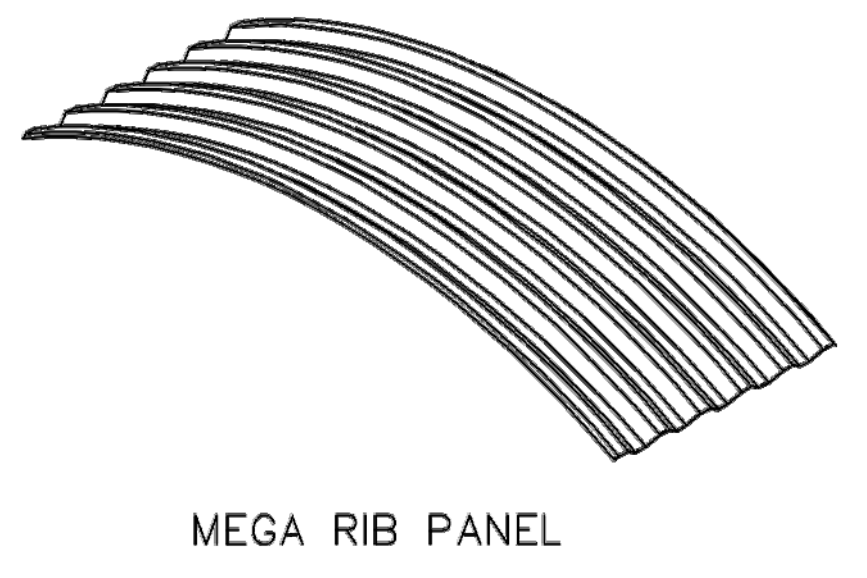
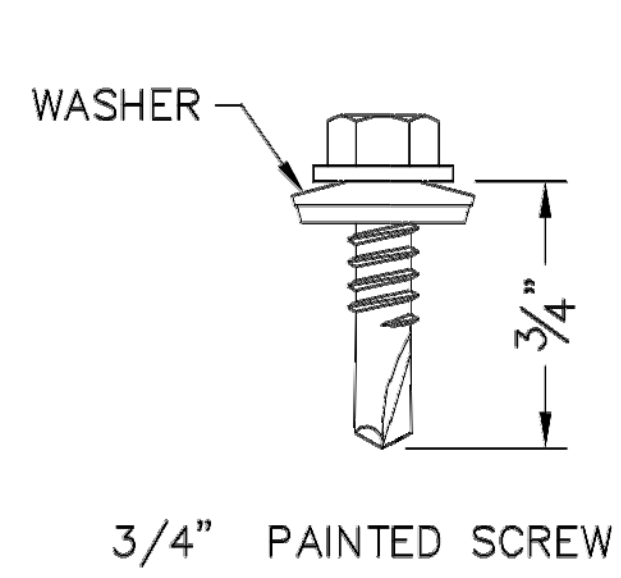
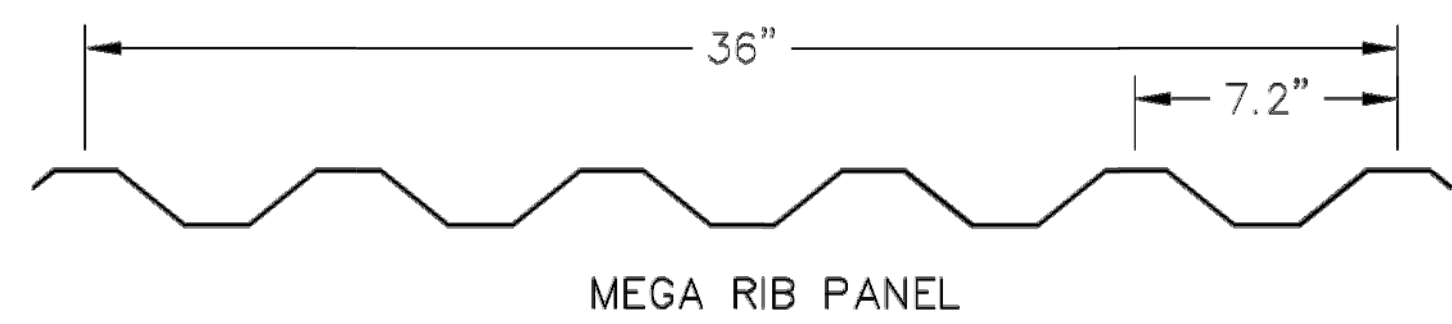
DINING PLAZA at the Henry Vilas Zoo
 702 S. Randall Ave.,
 Madison, Wisconsin

PRINTS ISSUED
 FOR BID- NOV. 24, 2014

WDM No. drawn:
 13046.1 checked:

SITE LAYOUT/ GRADING

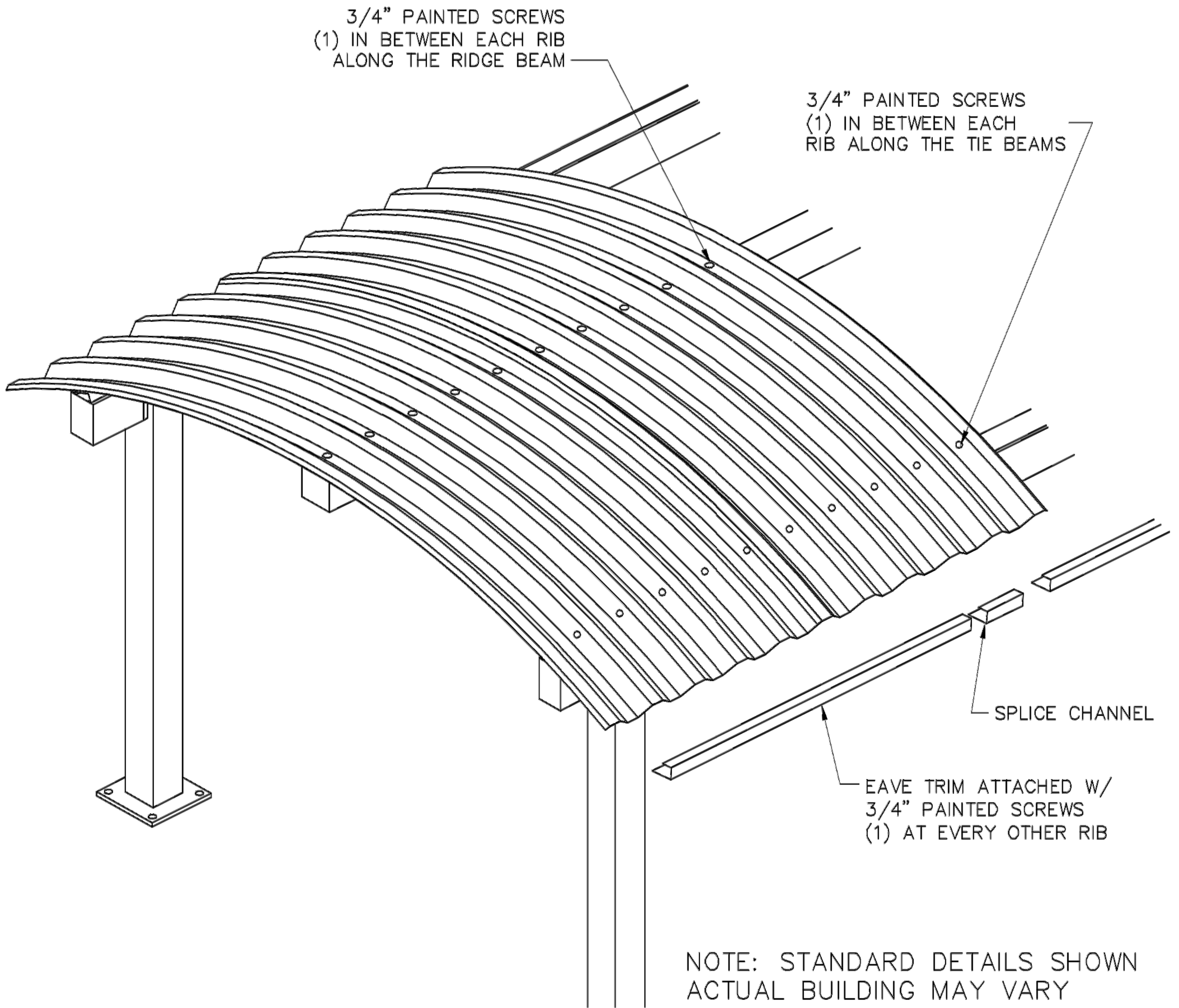
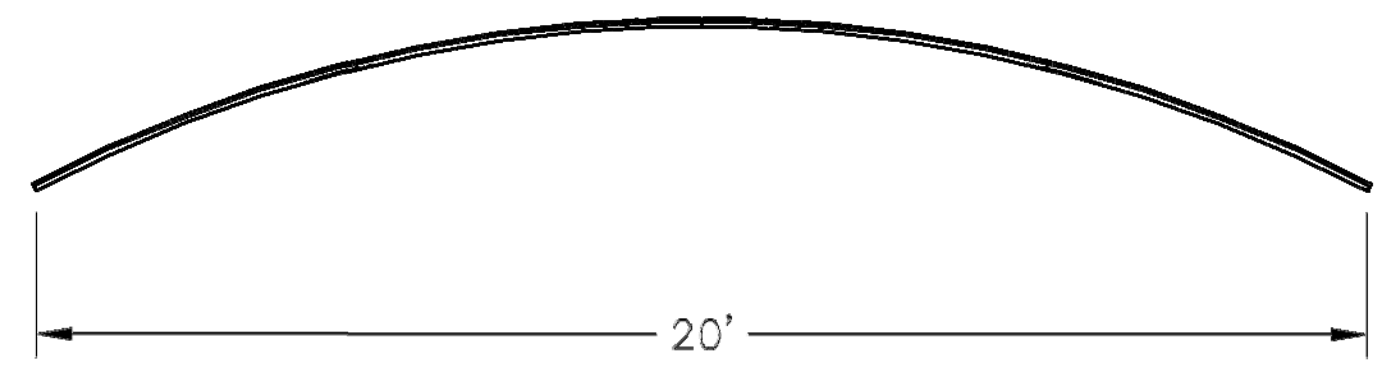
SA2.3



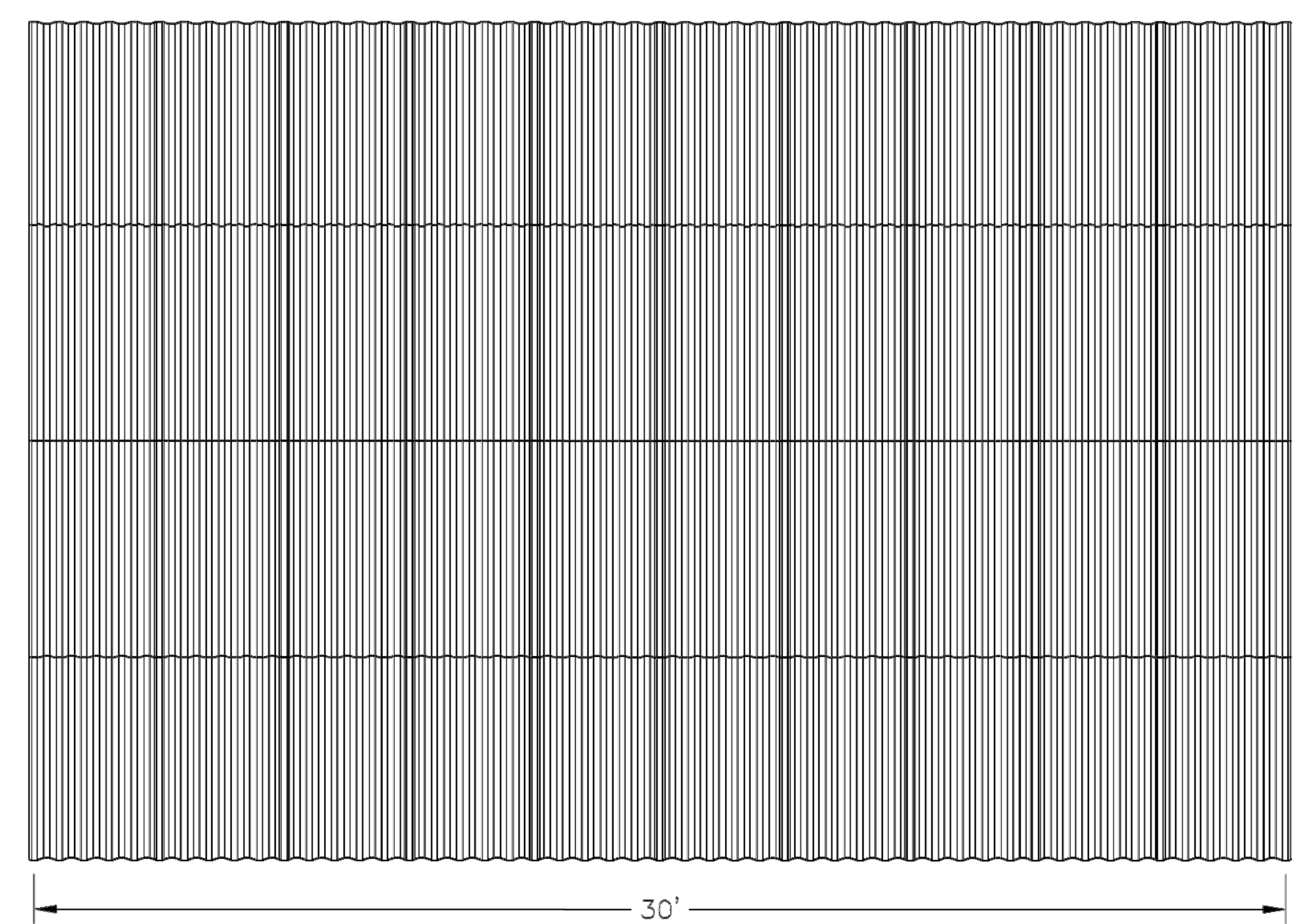
PRELIMINARY: NOT FOR CONSTRUCTION

ICON
Shelter Systems Inc
DISTINCTIVE STEEL SHELTERS
WWW.ICONSHelters.COM
COPYRIGHT 2004, ICON SHELTER SYSTEMS, INC.
1455 LINCOLN AVE.
HOLLAND MI, 49423
616.396.0919
800.748.0985
616.396.0944 FX

Roof Layout



NOTE: STANDARD DETAILS SHOWN
ACTUAL BUILDING MAY VARY



DRAWN BY:	LB
DATE:	3/21/13
JOB NO.:	STANDARD
REVISION:	
BUILDING TYPE:	BV20x30G
PROJECT NAME:	-20-100-30

SHEET
4.0

DWG: \\icon01\Company\Engineering\Standards\Shelters\BV20x30\G-P5-20-100-30~24169.DWG

wcm
ARCHITECTS
WDM Architects P.A.
105 North Washington
Wichita, KS 67202-2815
T 316.262.4700
F 316.262.0002
wdmarchitects.com
we do more

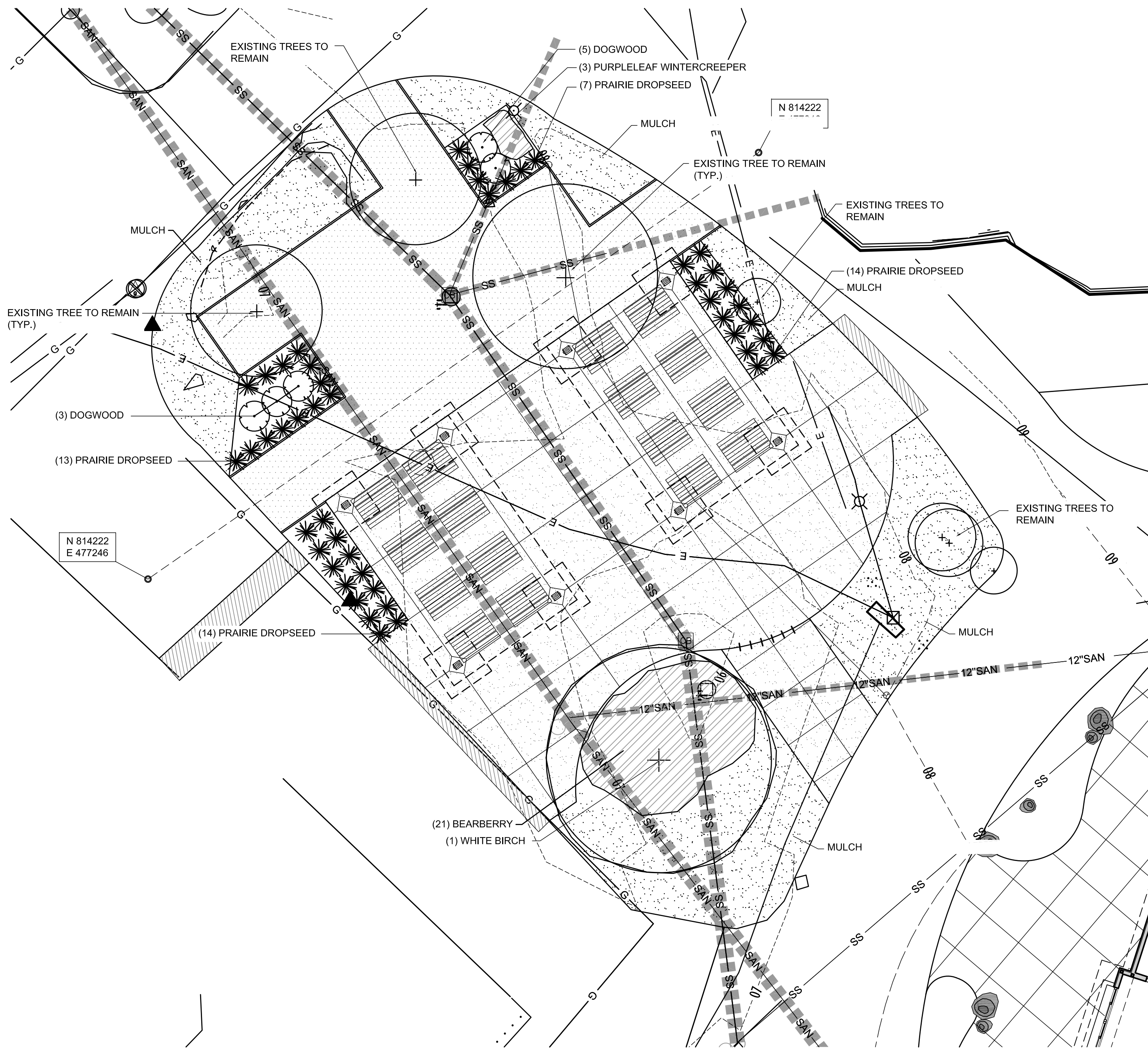
**DINING PLAZA at the
Henry Vilas Zoo**
702 S. Randall Ave.,
Madison, Wisconsin

PRINTS ISSUED
FOR BID- NOV. 24, 2014

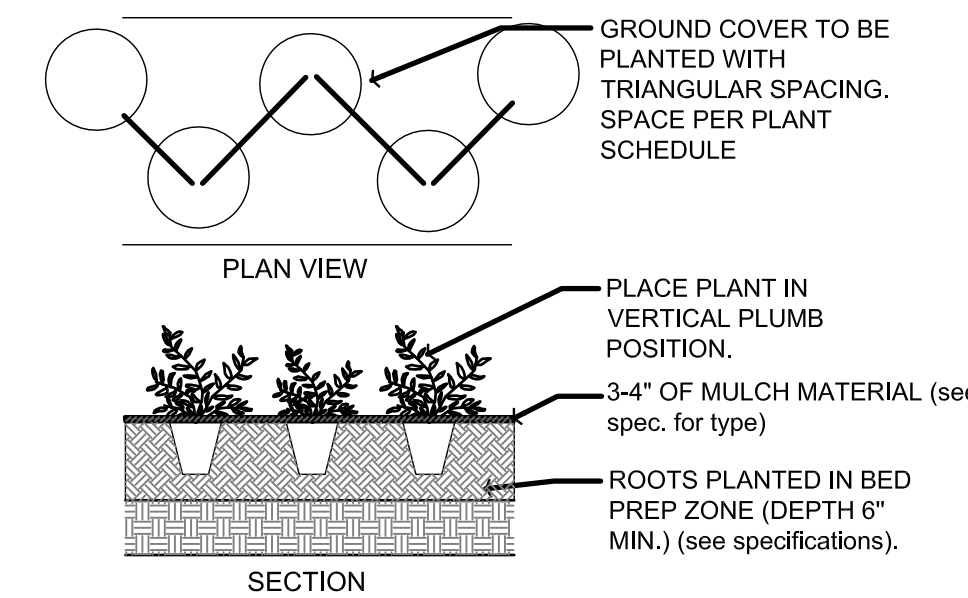
WDM No. 13046.1
drawn: checked:

SITE LAYOUT/ GRADING

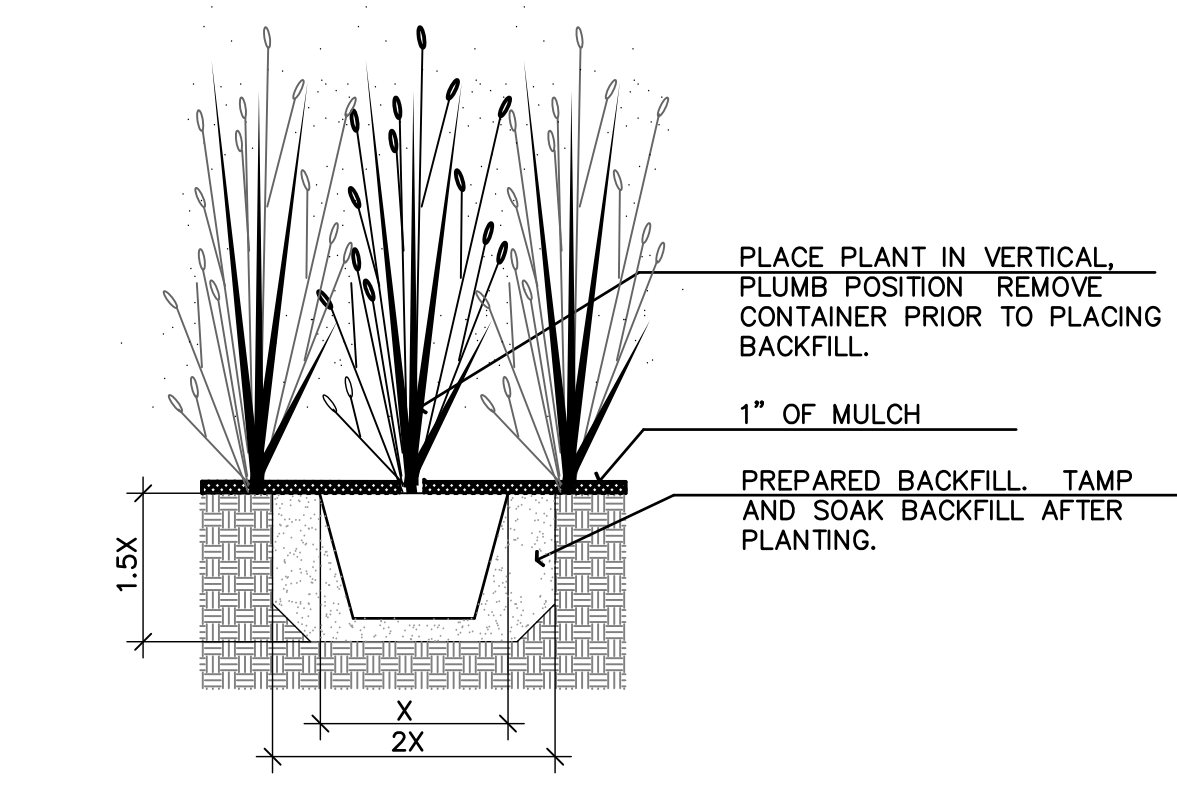
SA2.4



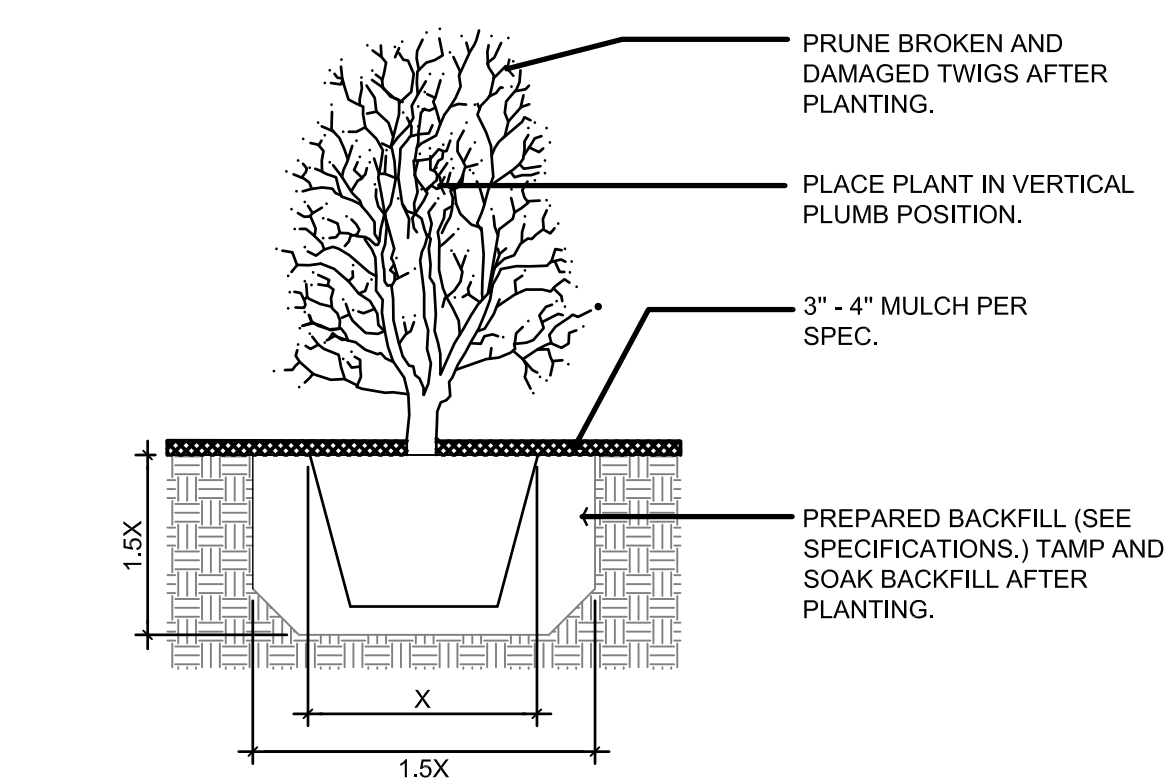
BOTANICAL NAME	COMMON NAME	SIZE	COND.	CONT. SIZE	REMARKS
<i>Betula papyrifera</i>	White Birch	2 1/2" CAL.	B&B	---	Full & Healthy
<i>Cornus sericea</i>	Redosier Dogwood	18" TALL MIN.	CONT.	#5	FULL & HEALTHY
<i>Sporobolus heterolepis</i>	Prairie Dropseed	---	CONT.	#1	FULL & HEALTHY
<i>Arctostaphylos uva-ursi</i>	Bearberry	---	CONT.	QUART	SPACE 24" O.C.
<i>Euonymus fortunei 'Colorata'</i>	Purpleleaf Wintercreeper	---	CONT.	QUART	SPACE 18" O.C.



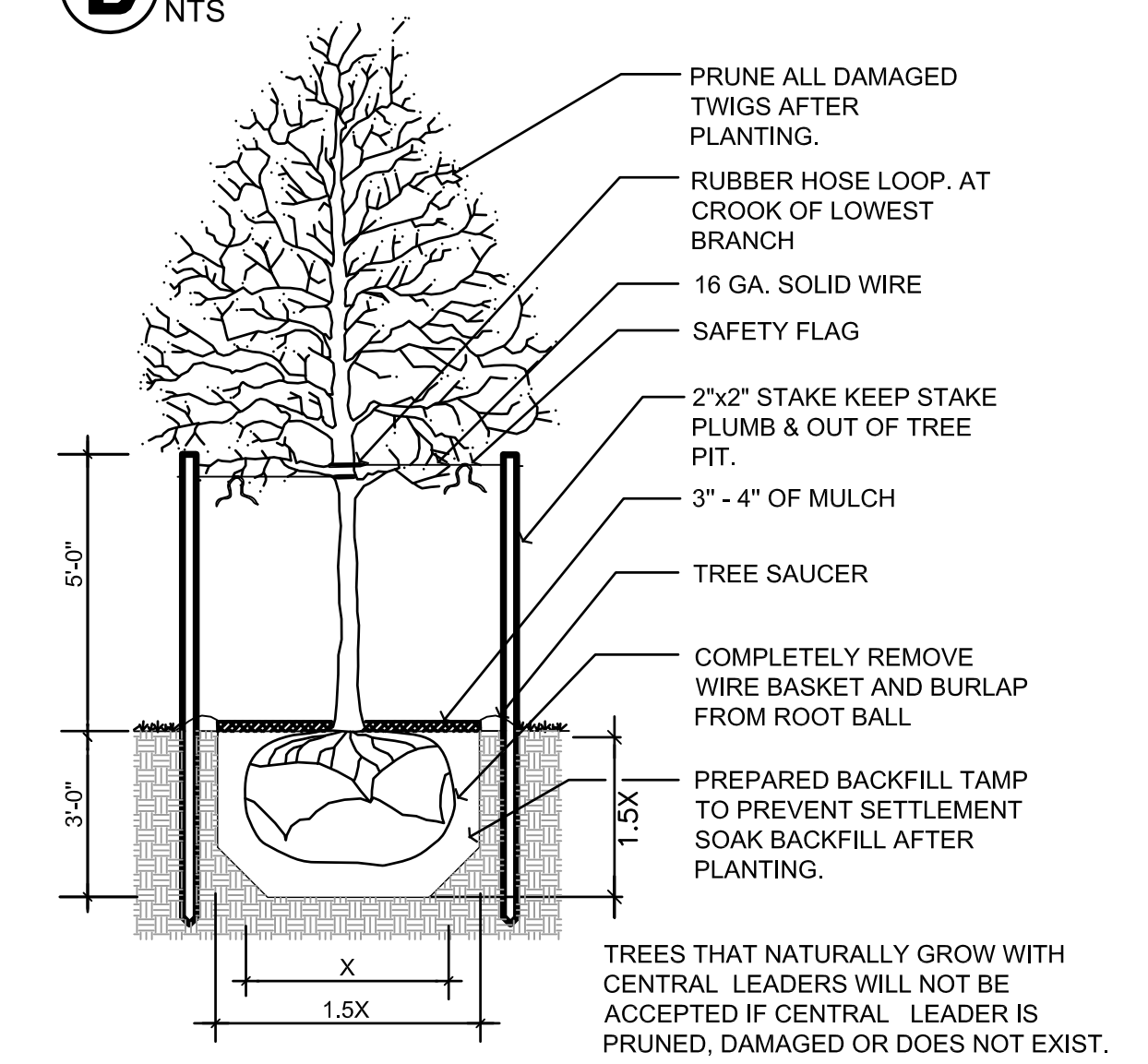
A GROUND COVER PLANTING
NTS



B POTTED GRASS PLANTING
NTS



C SHRUB PLANTING
NTS



D TREE PLANTING
NTS



GENERAL PLANTING NOTES

- PRIOR TO BEGINNING ANY WORK ON THE SITE, THE CONTRACTOR SHALL CONTACT THE "PUBLIC WORKS PROJECT ENGINEER" AND THE ARCHITECT/LANDSCAPE ARCHITECT FOR SPECIFIC INSTRUCTIONS RELEVANT TO THE SEQUENCING OF WORK, REPORT ANY ISSUES IN SITE CONDITIONS AND CONSTRUCTION THAT MAY AFFECT THE PLANTING LAYOUT TO THE PROJECT ARCHITECT PRIOR TO STARTING CONSTRUCTION.
- LANDSCAPE CONTRACTOR SHALL PROVIDE ALL LABOR, MATERIALS AND SERVICE NECESSARY TO FURNISH AND INSTALL PLANTINGS AS SPECIFIED HEREIN AND AS SHOWN ON THESE PLANS.
- NO MATERIAL SUBSTITUTIONS** SHALL BE MADE WITHOUT LANDSCAPE ARCHITECT'S APPROVAL. ALTERNATIVE MATERIALS OF SIMILAR SIZE AND CHARACTER MAY BE CONSIDERED IF SPECIFIED. PLANT MATERIALS CANNOT BE OBTAINED. LANDSCAPE ARCHITECT RESERVES THE RIGHT TO REVISE PLANT LIST AS DEEMED NECESSARY.
- LANDSCAPE CONTRACTOR IS TO STAKE ALL PLANT MATERIAL (TREE AND SHRUB) LOCATIONS AS WELL AS PLANTER BED EDGER LOCATIONS PRIOR TO INSTALLATION. CONTRACTOR IS TO CONTACT PROJECT ARCHITECT FOR PRE-INSTALLATION CONFERENCE AND FINAL APPROVAL OF STAKING. ADJUST PLANT LOCATIONS ONLY AS NECESSARY TO AVOID SITE CONFLICTS.
- UTILITIES HAVE BEEN SHOWN ON THE PLAN FOR ROUGH LOCATION OF SERVICES. CONTRACTOR SHALL LOCATE ALL UTILITIES BEFORE WORK. LOCATE EXACT UTILITY LOCATIONS BY CONTACTING UTILITY LOCATOR SERVICES. CONTRACTOR WILL BE RESPONSIBLE FOR THE REPAIR OF ANY DAMAGE HE MAY CAUSE TO UTILITIES.
- PROTECT AND SAVE THE EXISTING PLANT MATERIALS SHOWN ON PLANS UNLESS NOTED TO BE REMOVED.
- GENERAL CONTRACTOR SHALL PROVIDE 4" OF TOPSOIL AT ALL SOD, SEED AND PLANTING AREAS. GRADE SHALL BE ADJUSTED FOR SOD THICKNESS. ANY BERMS SHOWN ON PLANS ARE REFLECTED ON GRADING PLAN. FINISH GRADING SHALL BE PERFORMED LANDSCAPE CONTRACTOR.
- WHEN CLAY SOIL IS ENCOUNTERED IN THE ESTABLISHMENT OF THE LAWN OR THE INSTALLATION OF THE PLANT MATERIAL IT SHALL BE IMPROVED IN ACCORDANCE WITH STANDARD TRADE PRACTICE.
- NO IRRIGATION SYSTEM WILL BE INSTALLED. CONTRACTOR TO WATER AND MAINTAIN PLANTS FOR 90 DAYS AFTER SUBSTANTIAL COMPLETION. CONTRACTOR SHALL SUPPLY ENOUGH WATER TO MAINTAIN PLANTS IN A HEALTHY CONDITION.
- BACKFILL FOR PLANT EXCAVATIONS TO BE CLEAN NATURAL SOIL. EXCAVATED FROM PLANTING PITS MIXED WITH COMPOST AND WELL-ROTTED MANURE AT A RATIO OF THREE (3) PARTS SOIL TO ONE (1) PART COMPOST AND WELL-ROTTED MANURE.
- FERTILIZE ALL PLANTS WITH MILORGANITE FERTILIZER AS DIRECTED BY INSTRUCTIONS ON FERTILIZER.
- CULTIVATE GROUND COVER PLANTING BEDS TO DEPTH OF 8". TILL COMPOST AND WELL-ROTTED MANURE INTO THE PLANTING BED AT THE APPROXIMATE RATIO OF ONE (1) PART COMPOST/MANURE TO THREE (3) PARTS SOIL.
- ALL PLANT MATERIALS SHALL BE PROTECTED FROM THE DRYING ACTION OF THE SUN AND WIND AFTER BEING DUG. WHILE BEING TRANSPORTED, AND WHILE AWAITING PLANTING. BALLS OF PLANTS WHICH CANNOT BE PLANTED IMMEDIATELY SHALL BE PROTECTED FROM DRYING ACTION BY COVERING THEM WITH MOIST MULCH. PERIODICALLY, APPLY WATER TO MULCH-COVERED BALLS TO KEEP MOIST. IF PLANTING SHOULD OCCUR DURING GROWING SEASON, APPLY ANTI-DESSICANT TO LEAVES BEFORE TRANSPORT TO REDUCE LIKELIHOOD OF WINDBURN. REAPPLY ANTI-DESSICANT AFTER PLANTING TO REDUCE TRANSPIRATION.
- ALL PLANT MATERIALS SHALL HAVE BACKFILL CAREFULLY PLACED AROUND BASE AND SIDES OF BALL TO TWO-THIRDS (2/3) DEPTH OF BALL. THEN THOROUGHLY SOAKED WITH WATER TO ALLOW SETTLEMENT. ALL WIRE, BURLAP FASTENERS AND LOOSE BURLAP AROUND BASE OF TRUNK SHALL BE REMOVED. REMAINDER OF PIT SHALL THEN BE BACKFILLED, ALLOWING FOR DEPTH OF MULCH, SAUCER AND SETTLEMENT OF BACKFILL. BACKFILL SHALL THEN BE THOROUGHLY WATERED ONCE AGAIN.
- AFTER PLANTING IS COMPLETED, REPAIR INJURIES TO ALL PLANTS AS REQUIRED. LIMIT AMOUNT OF PRUNING TO A MINIMUM NECESSARY TO REMOVE DEAD OR INJURED TWIGS AND BRANCHES. PRUNE IN SUCH A MANNER AS NOT TO CHANGE NATURAL HABIT OR SHAPE OF PLANT. MAKE CUTS FLUSH, LEAVING NO STUBS. CUTS OF ONE INCH (1") OR MORE TO BE PAINTED WITH TREE PAINT. CENTRAL LEADERS SHALL NOT BE REMOVED.
- PLANT GROUND COVER/ANNUALS WITHIN ONE FOOT (1') OF TRUNK OF TREES OR SHRUBS PLANTED WITHIN AREA. PLANTING ARRANGEMENT SHALL BE TRIANGULAR, WITH PROPER ON-CENTER SPACING BETWEEN PLANTS.
- PLANTING BEDS ARE TO BE FREE OF WEEDS AND GRASS. TREAT PLANTING BEDS NOT CONTAINING PERENNIALS/ WILDFLOWERS WITH A PRE-EMERGENT HERBICIDE PRIOR TO PLANTING AND MULCH PLACEMENT. APPLY IN ACCORDANCE WITH STANDARD TRADE PRACTICE.
- USE BARK CHIP MULCH IN ALL SHRUB PLANTING BEDS AND PINE NEEDLE MULCH UNDER ALL EVERGREEN TREES. LANDSCAPE CONTRACTOR SHALL SUBMIT A SAMPLE OF MULCH FOR APPROVAL PRIOR TO STARTING CONSTRUCTION. SIZE OF MATERIAL TO RANGE FROM 1"-3" ONLY. PLACE 3"-4" OF MULCH IN ALL SHRUB BEDS. PLACE 1" OF MULCH IN GROUND COVER BEDS. PLACE 4" OF MULCH IN ALL TREE SAUCERS.
- REMOVE ALL RUBBISH, EQUIPMENT AND MATERIAL AND LEAVE THE AREA IN A NEAT, CLEAN CONDITION EACH DAY. MAINTAIN PAVED AREAS UTILIZED FOR HAULING EQUIPMENT AND MATERIALS BY OTHER TRADES IN A CLEAN AND UNOBSTRUCTED CONDITION AT ALL TIMES. REMOVE SOIL OR DIRT THAT ACCUMULATED DURING OR AS A RESULT OF PLANTING OPERATIONS EACH DAY AND AT THE COMPLETION OF PLANTING OPERATIONS.
- ALL PLANTS SHALL BE INSPECTED BY THE OWNER AND PROJECT ARCHITECT AT SUBSTANTIAL COMPLETION. CONTRACTOR SHALL REPLACE IMMEDIATELY ANY PLANTS NOT IN HEALTHY AND VIGOROUS CONDITION AT THAT TIME AT NO EXPENSE TO THE OWNER.
- ANY VEGETATED AREA DISTURBED BY THE CONSTRUCTION PROCESS MUST BE RESTORED BY REPAIRING THE SOIL BED AND REESTABLISHING ORIGINAL PLANTINGS.
- LANDSCAPE CONTRACTOR IS TO REMOVE TREE STAKES AND ALL DEAD WOOD ON TREES ONE YEAR AFTER PROVISIONAL/FINAL ACCEPTANCE.
- CONTRACTOR TO PROVIDE CARE AND MAINTENANCE INSTRUCTIONS TO OWNER IN BOTH WRITTEN AND BOUND FORMAT FOR ALL PLANT MATERIALS.
- IN ALL PLANTING BEDS- ADD GOOD QUALITY ORGANIC MATTER AT THE RATE OF 3 TO 6 CUBIC YARDS PER 1,000 SQUARE FOOT AREA, AND THOROUGHLY MIX WITH THE EXISTING SOIL TO A DEPTH OF 6 INCHES.

wdm ARCHITECTS
WDM Architects P.A.
105 North Washington
Wichita, KS 67202-2815
T 316.262.4700
F 316.262.0002
wdmarchitects.com

we do more

DINING PLAZA at the Henry Vilas Zoo
702 S. Randall Ave.,
Madison, Wisconsin

PRINTS ISSUED
FOR BID- NOV. 24, 2014

WDM No. drawn:
13046.1 checked:

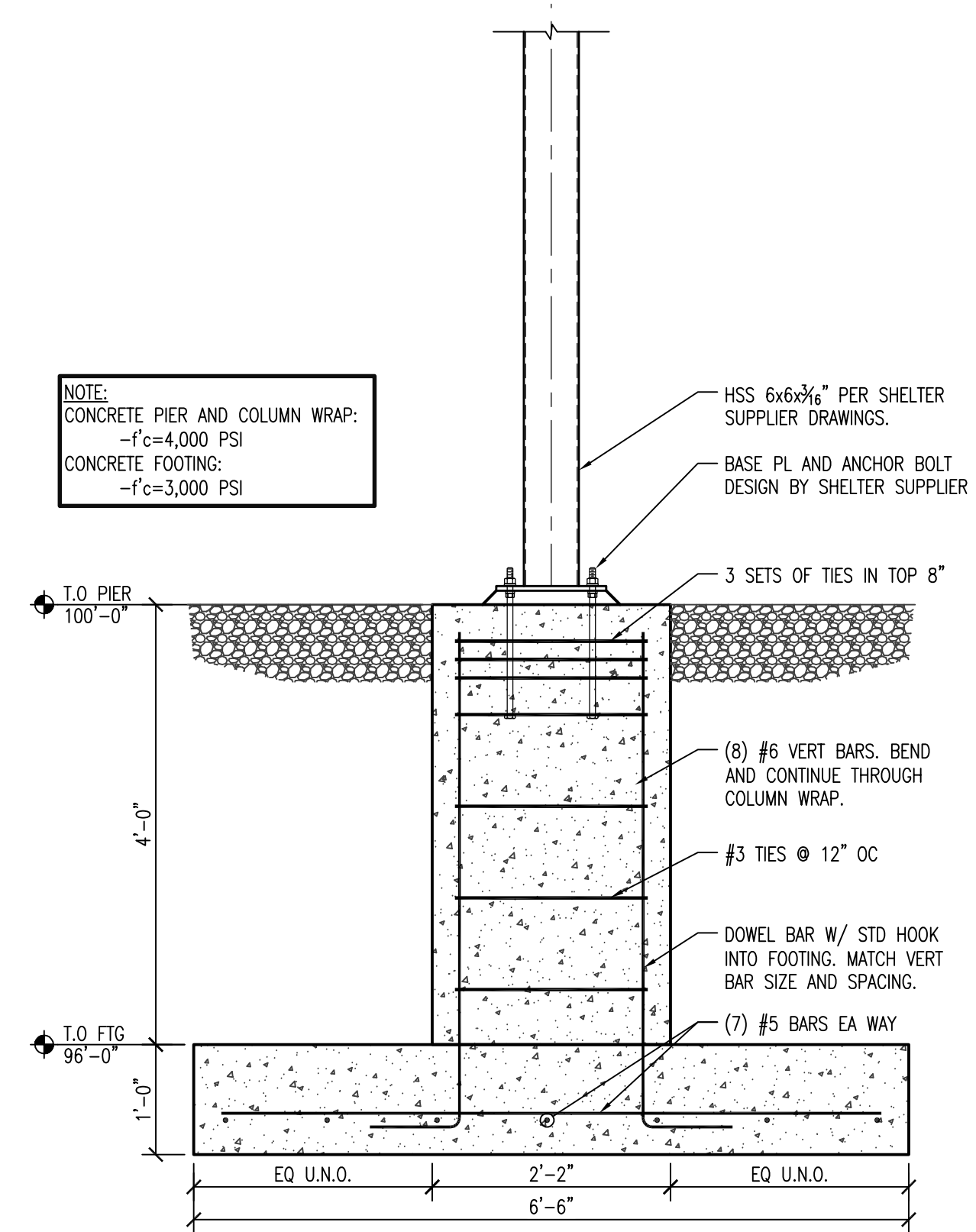
PLANTING PLAN

LS1.0

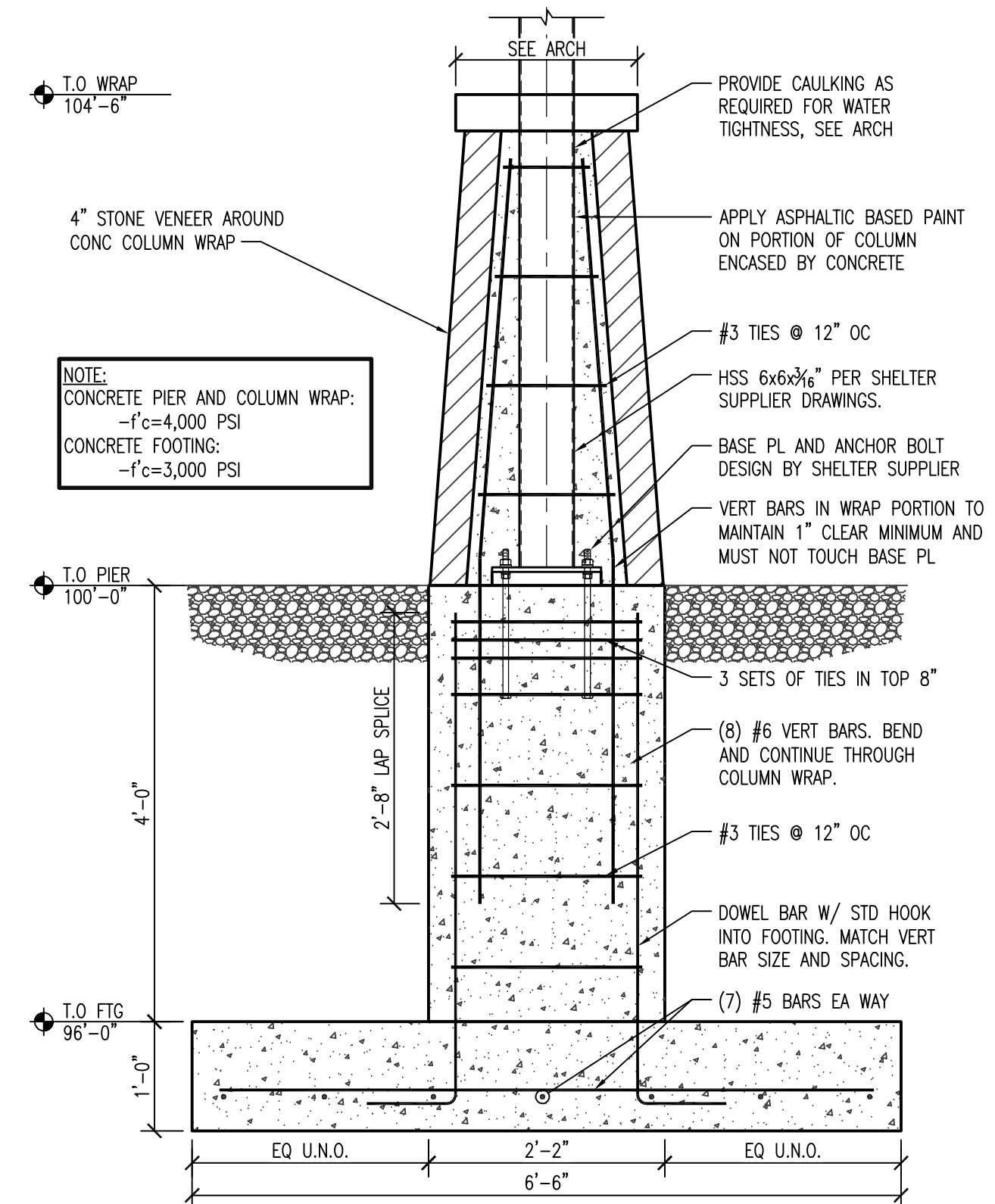
ALTERNATE #2



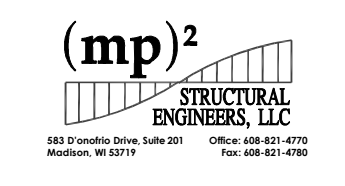
1 OUTDOOR DINING FOUNDATION PLAN
 S1.3 SCALE: 1/4"=1'-0"



2 DINING PIER SECTION
 S1.3 SCALE: 3/4"=1'-0"



3 ALT. #1 DINING PIER SECTION
 S1.3 SCALE: 3/4"=1'-0"



WDM Architects P.A.
 105 North Washington
 Wichita, KS 67202-2815
 T 316.262.4700
 F 316.262.0002
 wdmarchitects.com

we do more

**DINING PLAZA at the
 Henry Vilas Zoo**
 702 S. Randall Ave.,
 Madison, Wisconsin

PRINTS ISSUED
 FOR BID 24 NOV 2014

WDM No. 13046.1 drawn: MRW
 checked: MSL

FOUNDATION PLAN & DETAILS

S1.3

LUMINAIRE SCHEDULE		
(MTG) MOUNTING: RE - RECESSED SP - SUSPENDED CL - CEILING SURFACE WL - WALL UC - UNDER CABINET CV - COVE PL - POLE FR - FLANGED RECESSED O - OTHER (SEE DESCRIPTION)	(Type) LAMP TECHNOLOGY: FL - FLUORESCENT CF - COMPACT FLUORESCENT HL - HALOGEN IN - INCANDESCENT LED - LIGHT EMITTING DIODE HS - HIGH PRESSURE SODIUM MH - METAL HALIDE SMH - SUPER METAL HALIDE PSMH - PULSE START METAL HALIDE CMH - CERAMIC METAL HALIDE O - OTHER (SEE DESCRIPTION) XL - EXTENDED LIFE XLP - EXTENDED LIFE & OUTPUT	(L/L) LENS/LOUVER A - .125 ACRYLIC B - BLACK BAFFLE C - CLEAR ALZAK D - PARABOLIC F - FRESNEL G - TEMPERED GLASS H - WALL WASHER P - POLYCARBONATE K - KSH12 .125" ACRYLIC K19 - KSH19 .156" ACRYLIC L - LOW IRIDESCENT SPECULAR ALUM. N - NONE R - HIGH IMPACT DR ACRYLIC O - OTHER (SEE DESCRIPTION)
FINISH: PAF - PAINT AFTER FABRICATION CSA - FINISH SELECTION BY ARCHITECT	(TYPE) BALLAST: DIM07 - LINE DIMMING BALLAST DIM10 - 0-10V DIMMING BALLAST UNLESS NOTED HL - HIGH / LOW LEVEL BALLAST ML - MULTI-LEVEL SWITCHING HP - HIGH PERFORMANCE / MULTI-VOLTAGE / LOW BALLAST FACTOR	(TYPE) BALLAST: EB - ELECTRONIC BALLAST EM - EMERGENCY BATTERY BALLAST - 1100 LUMEN OUTPUT UNLESS NOTED DALI - DIGITAL DIMMING BALLAST MV - MULTI-VOLTAGE ELECTRONIC 120V-277V PRS - ELECTRONIC PROGRAM RAPID START BALLAST FACTOR

CATALOG NUMBER SHALL NOT BE CONSIDERED COMPLETE AND MATERIAL SHALL NOT BE ORDERED BY MANUFACTURER AND CATALOG NUMBER ONLY. THE COMPLETE DESCRIPTION AND THE SPECIFICATION SHALL BE COORDINATED WITH THE CATALOG NUMBER TO DETERMINE THE EXACT MATERIAL AND ACCESSORIES TO BE ORDERED. THE FIRST MANUFACTURER LISTED IS THE BASIS FOR DESIGN.

REFER TO SPECIFICATION SECTIONS LIGHTING 26 51 FOR ADDITIONAL INFORMATION AND REQUIREMENTS.
ALL LAMPS FOR THIS PROJECT SHALL BE FURNISHED AND INSTALLED BY THE ELECTRICAL CONTRACTOR UNLESS OTHERWISE NOTED.
FLUORESCENT LAMP CORRELATED COLOR TEMPERATURE 4100°K, COLOR RENDERING INDEX (CRI) AT OR ABOVE 80, UNLESS NOTED OTHERWISE.

ITEM	DESCRIPTION	DIMENSIONS				MTG	LAMP TYPE	QTY	MODEL	BALLAST		L/L	APPROVED MANUFACTURER
		L	W	H	DIA.					VOLTS	TYPE		
F1	DIE-CAST ALUMINUM BRACKET MOUNTED, SYMMETRICAL DISTRIBUTION, MOUNTS TO SURFACE BOX, WHITE FINISH			5"	1'-8"	WL	LED	1	25WATT 2300 LUMENS 4100K	120 V	MV	N	MCGRAW EDISON TTA-1-LED-E1-WQ TO MATCH ARCTIC PASSAGE

ELECTRICAL SYMBOL LIST			
SYMBOL:	TAG:	SPEC SECTION:	DESCRIPTION:
	TC-1	26 09 33	TIME SWITCH
	SW-LS-PC	26 27 26	EXTERIOR PHOTOCELL
	REC-DUP-WP	26 27 26	DUPLEX GFI RECEPTACLE, 125V, TWO RECEPTACLE WITH DOUBLE GANG WEATHERPROOF COVER

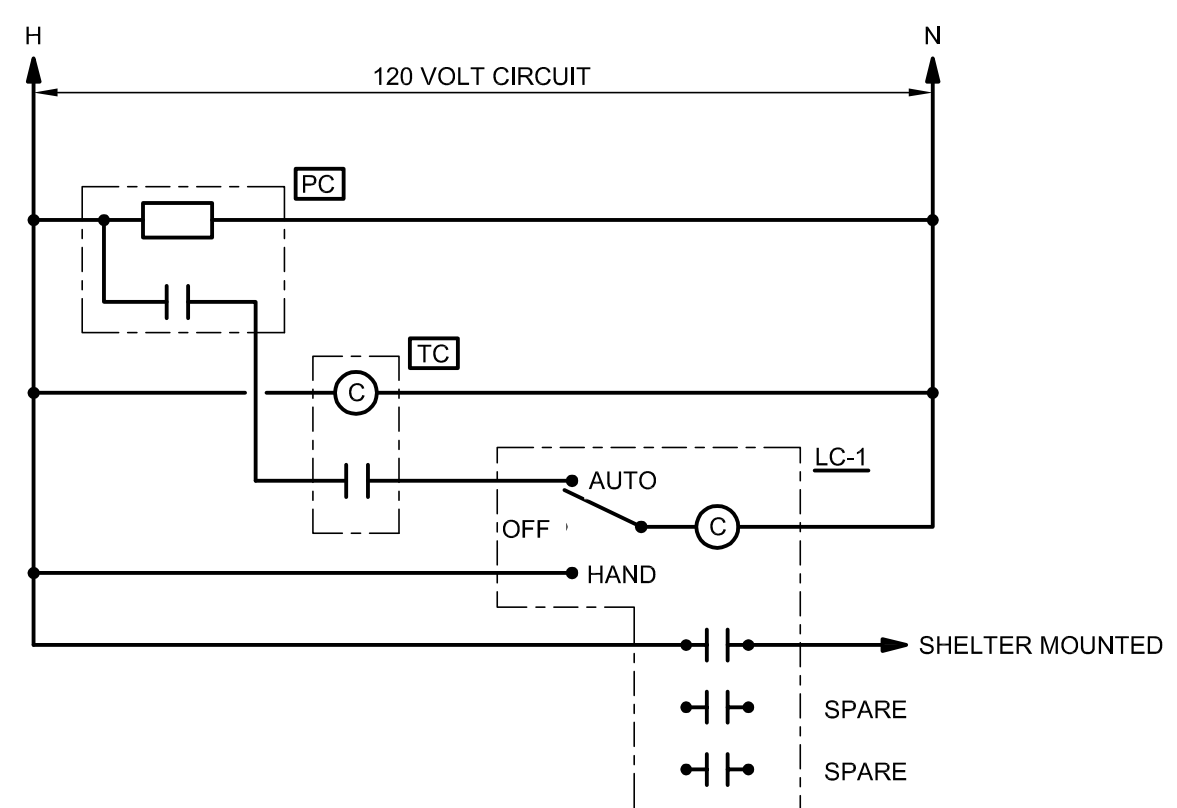
ELECTRICAL ABBREVIATIONS	
ABBREVIATION:	DESCRIPTION:
AFF	ABOVE FINISHED FLOOR
LC-1	LIGHTING CONTACTOR

ELECTRICAL GENERAL NOTES

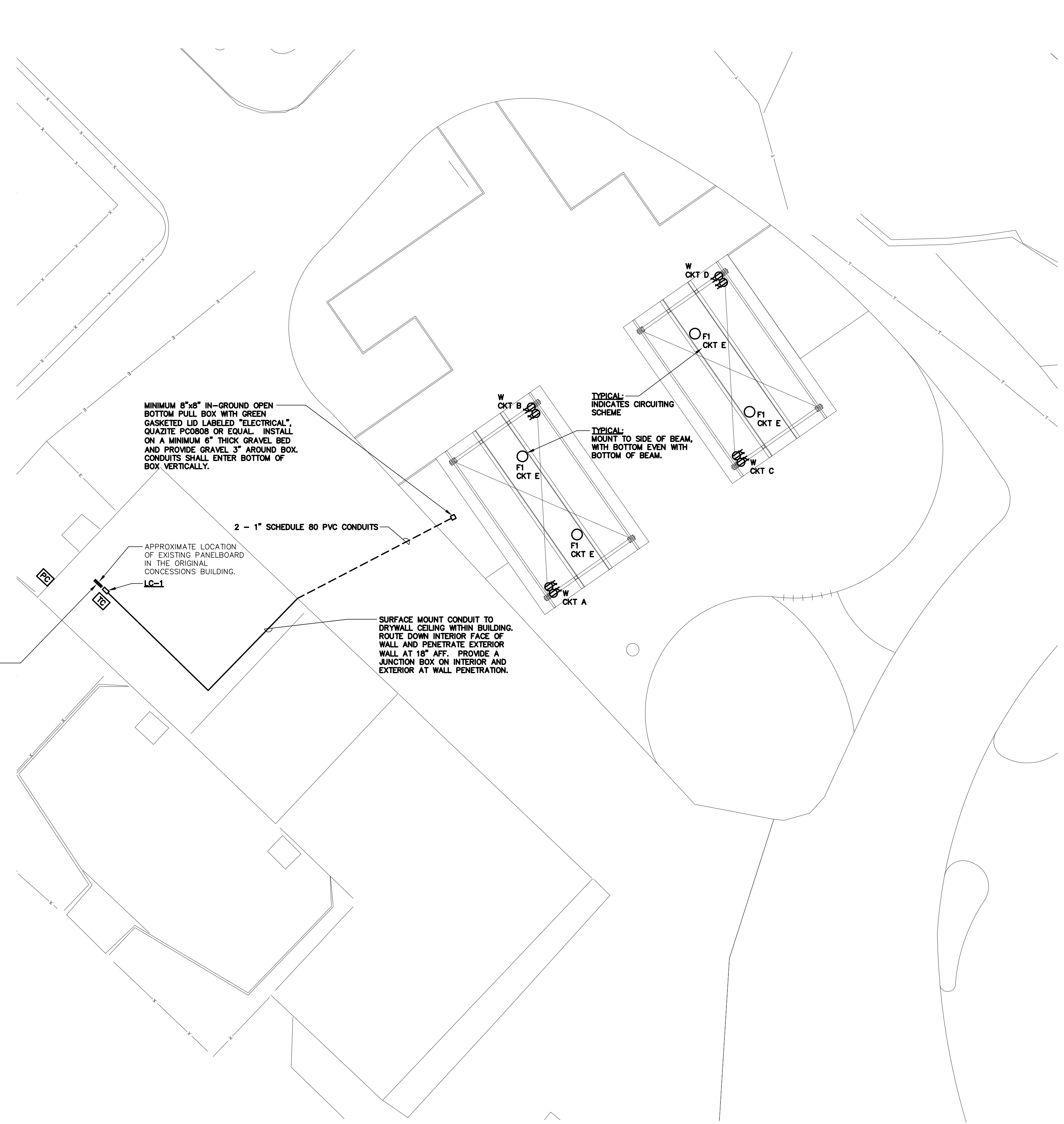
- LINE TYPE KEY:
 NEW WORK BY THIS CONTRACTOR (DARK SOLID LINE)
 NEW WORK UNDERGROUND BY THIS CONTRACTOR (DARK LONG DASHED LINE)

ELECTRICAL INSTALLATION NOTES

- CONTRACTOR SHALL BE RESPONSIBLE FOR ALL OPENINGS REQUIRED IN WALLS. ALL OPENINGS SHALL BE REPAIRED TO MATCH EXISTING BY A QUALIFIED CONTRACTOR AT THE EXPENSE OF THIS CONTRACTOR. ALL CONDUITS THROUGH WALLS SHALL BE GROUTED OR SEALED INTO OPENINGS.



2 EXTERIOR LIGHTING CONTROL DIAGRAM
NO SCALE



1 ELECTRICAL SITE PLAN
SCALE: 1"=10'-0"

wdm ARCHITECTS
WDM Architects P.A.
105 North Washington
Wichita, KS 67202-2815
T 316.262.4700
F 316.262.0002
wdmarchitects.com

DINING PLAZA at the Henry Vilas Zoo
702 S. Rancall Ave.,
Madison, Wisconsin

PRINTS ISSUED

WDM No. _____ drawn: _____
checked: _____

ELECTRICAL SITE PLAN

K J ENGINEERING CONSULTANTS
The FUTURE. Built SMARTER.
802 WEST BROADWAY, SUITE 312
MADISON, WISCONSIN 53713-1839
608.223.9600 FAX: 608.223.9601
www.kje.com
PROJECT #14.0862.00

K/JW ENGINEERING RESERVES PROPRIETARY RIGHTS, INCLUDING COPYRIGHTS, TO THIS DRAWING AND THE DATA SHOWN THEREON. SAID DRAWING AND/OR DATA ARE THE EXCLUSIVE PROPERTY OF K/JW ENGINEERING AND SHALL NOT BE USED OR REPRODUCED FOR ANY OTHER PROJECT WITHOUT THE EXPRESS WRITTEN APPROVAL AND PARTICIPATION OF K/JW ENGINEERING. © 2014 K/JW, P.C.

REFERENCE SCALE IN INCHES
0 1 2 3

E1.0