



**DANE COUNTY DEPT. OF  
ADMINISTRATION, PUBLIC  
WORKS DIVISION**

1919 Alliant Energy Center Way  
Madison, Wisconsin 53713  
Office: 608/266-4018 ♦ Fax: 608/267-1533  
Public Works Engineering Division

# ADDENDUM

March 23, 2022

**ATTENTION ALL REQUEST FOR PROPOSALS (RFP) HOLDERS**

**RFP NO. 322010 - ADDENDUM NO. 1**

**PAVILIONS NO 1 & NO 2 UPGRADES**

---

**PROPOSALS DUE:** TUESDAY, MARCH 29, 2022, 2:00 PM. DUE DATE AND TIME ARE NOT CHANGED BY THIS ADDENDUM.

---

This Addendum is issued to modify, explain or clarify the original Request for Proposal (RFP) and is hereby made a part of the RFP. Please attach this Addendum to the RFP.

**PLEASE MAKE THE FOLLOWING CHANGES:**

**1. Sheet E401**

Add new Sheet E401, issued with this Addendum.

**PLEASE NOTE THE FOLLOWING CONSULTANT SUBMITTED QUESTIONS:**

- Q1:** On page 1 of the scope of proposals Section B, the last sentence. This section refers to an upgraded air filtration system but under Section D.3. where the RFB's are being referenced there is no mention of an upgraded air filtration system. Can you please clarify if it should be included in the RFB or not.
- A1:** Not included as only description under section D.3 of what could be included under grant.

If any additional information about this Addendum is needed, please contact Eric Urtes, AIA, at 608/266-4798, [urtes.eric@countyofdane.com](mailto:urtes.eric@countyofdane.com).

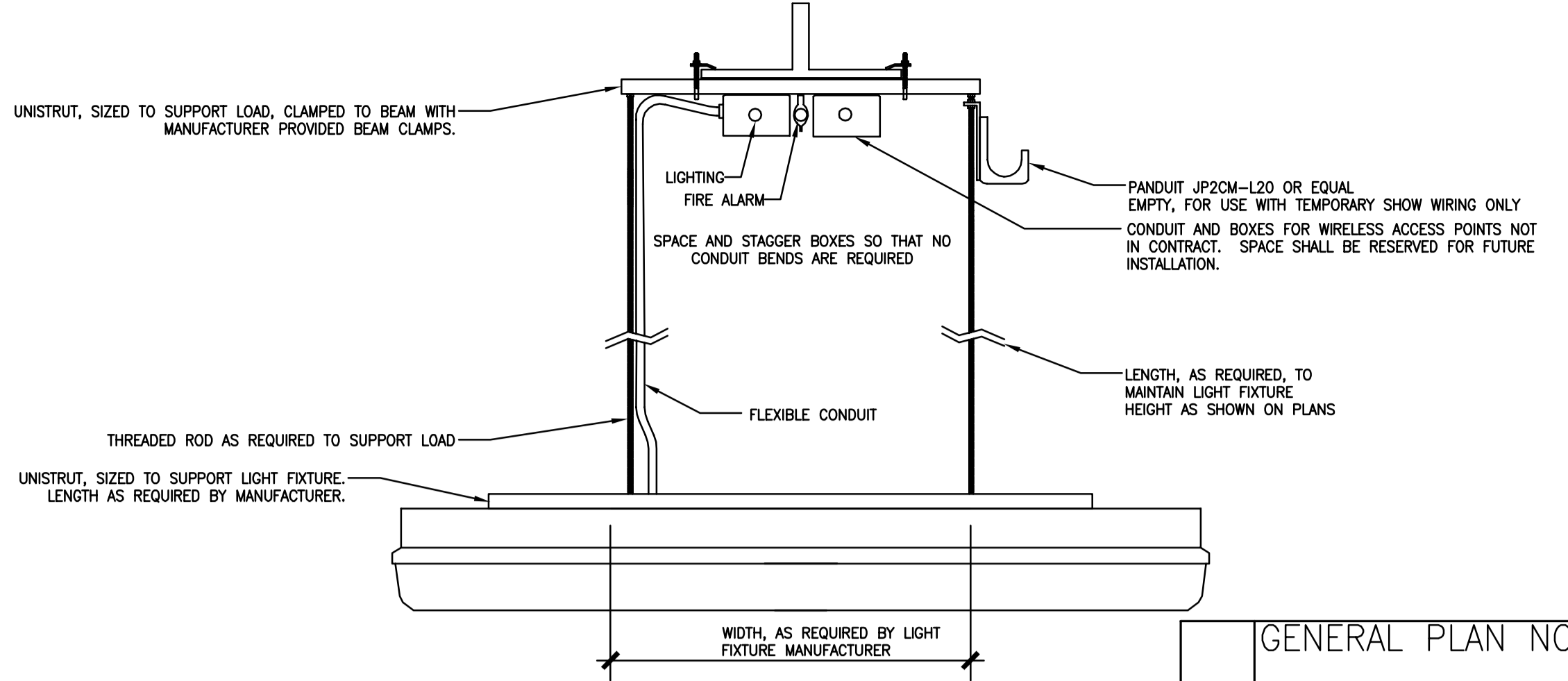
Sincerely,

*Eric Urtes*

Project Manager

Enclosures:

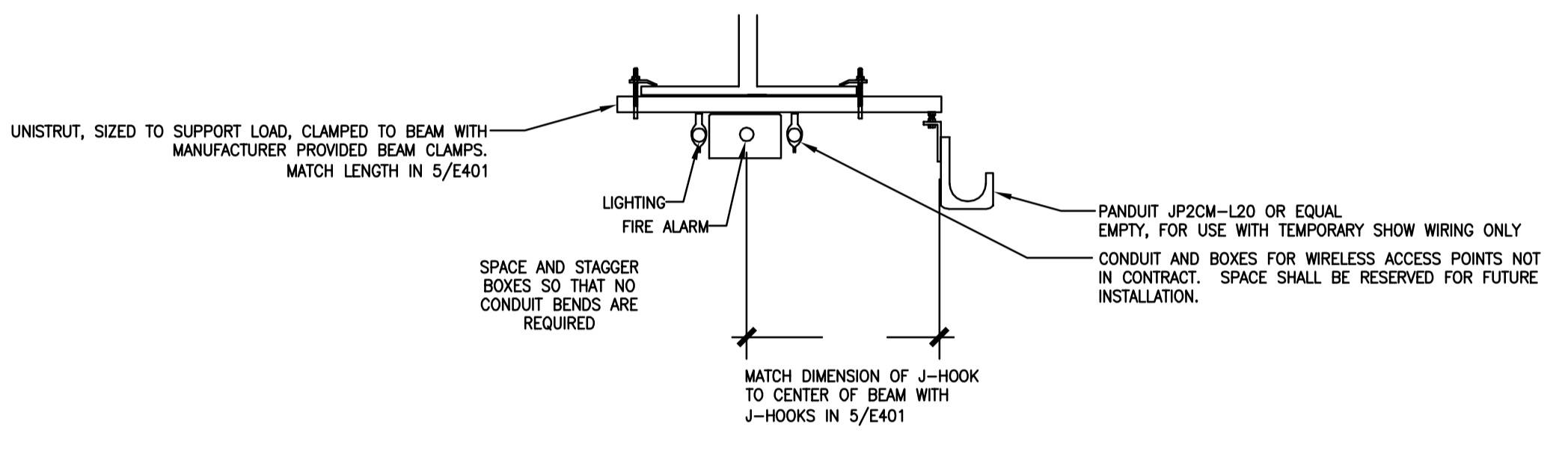
Sheet E401



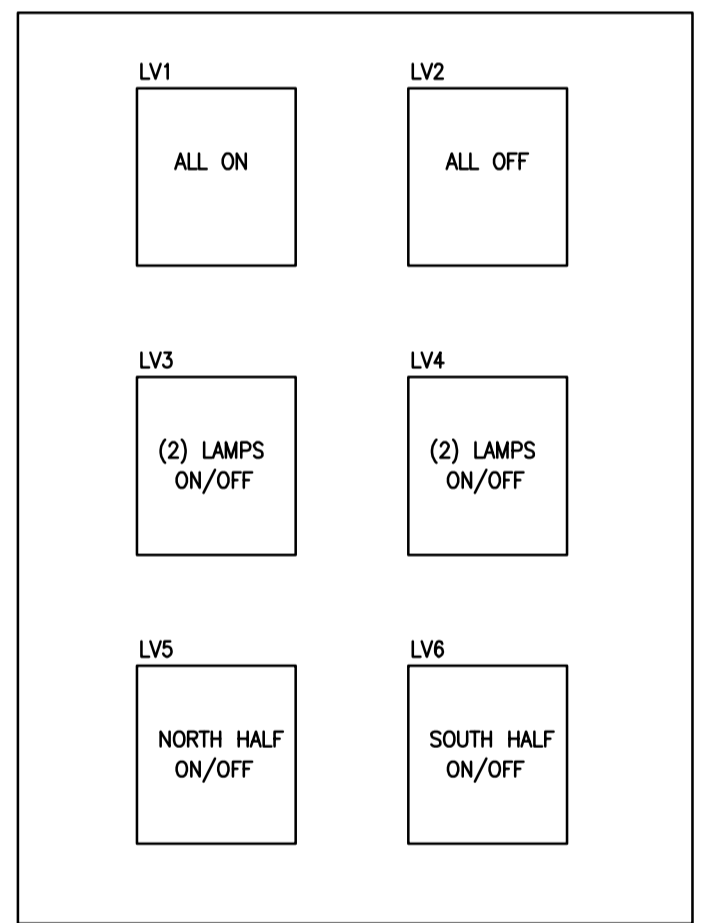
**GENERAL PLAN NOTES FOR DETAIL 6**

- EXACT LOCATION OF THE FIRE ALARM SPEAKER STROBE MUST BE VERIFIED ON SITE SO THAT IT IS VISIBLE FROM THE FLOOR AS REQUIRED BY THE FIRE DEPARTMENT.

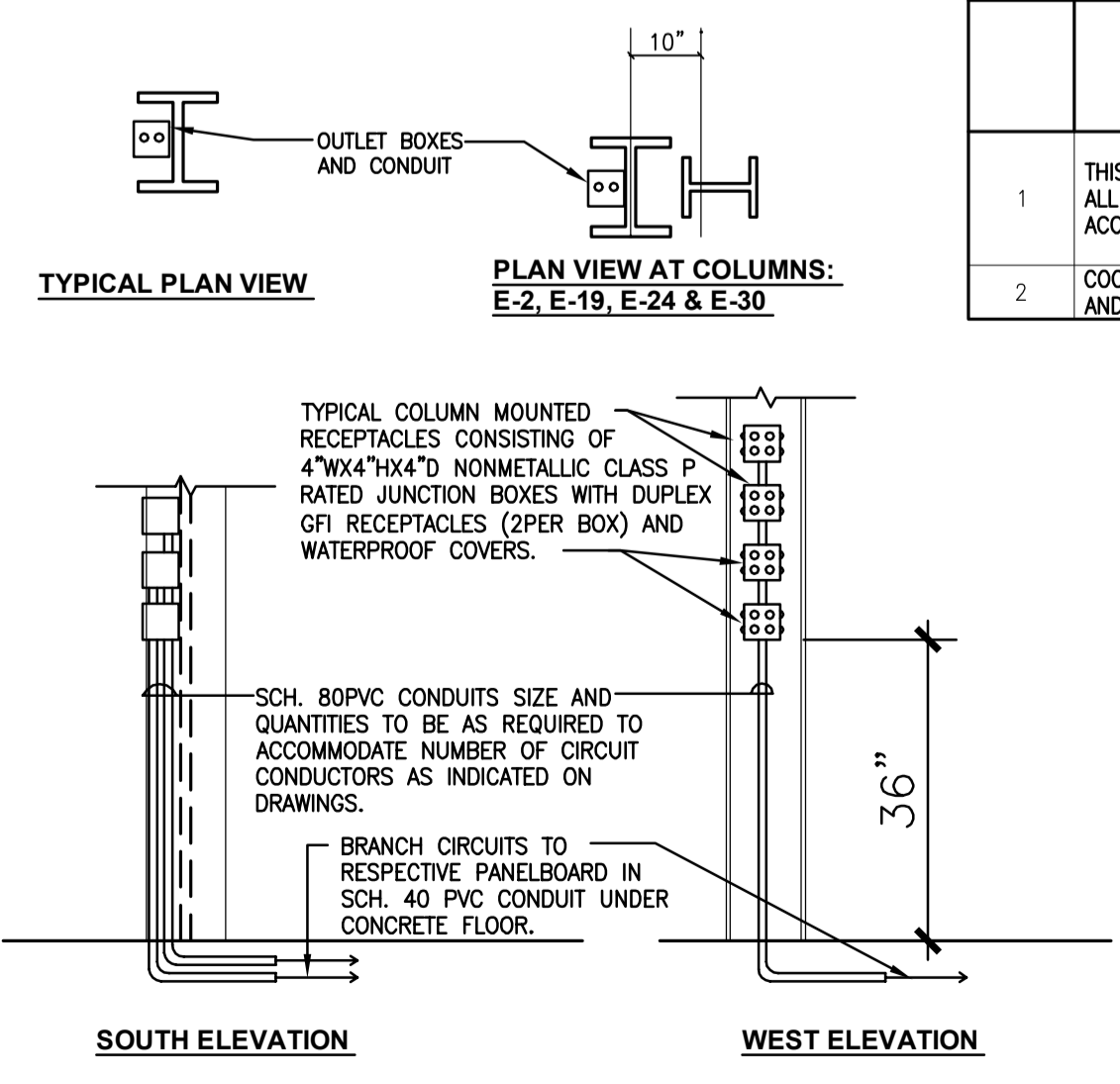
AT LIGHT FIXTURE LOCATIONS  
PAVILION LIGHTING, FIRE ALARM, DATA  
CONDUIT AND SUPPORT SYSTEM  
SCALE: N.T.S.



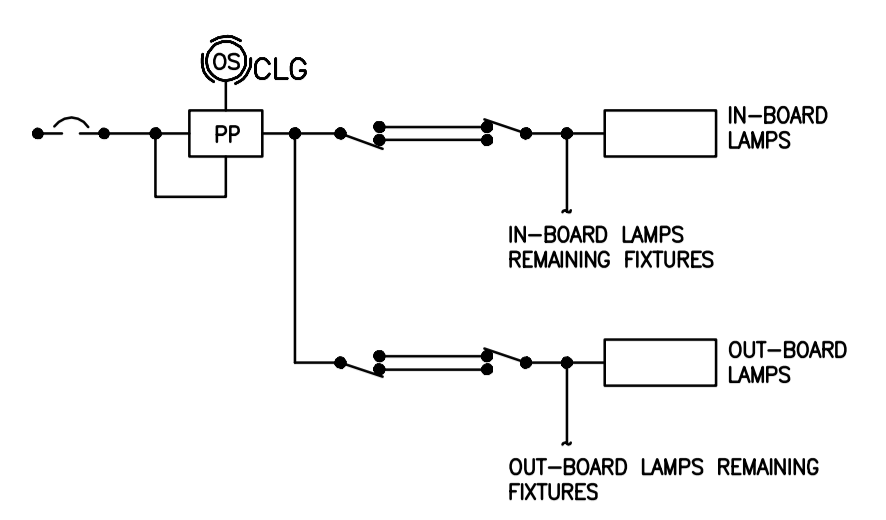
BETWEEN LIGHT FIXTURE LOCATIONS  
PAVILION LIGHTING, FIRE ALARM, DATA  
CONDUIT AND SUPPORT SYSTEM  
SCALE: N.T.S.



LOW VOLTAGE SWITCH SCENES  
SCALE: N.T.S.



RECEPTACLES AT COLUMN DETAIL  
SCALE: N.T.S.



DETAIL IS SCHEMATIC AND INTENDED TO ILLUSTRATE SWITCHING INTENT. VERIFY ACTUAL INSTALLATION WITH MANUFACTURER'S REQUIREMENTS.

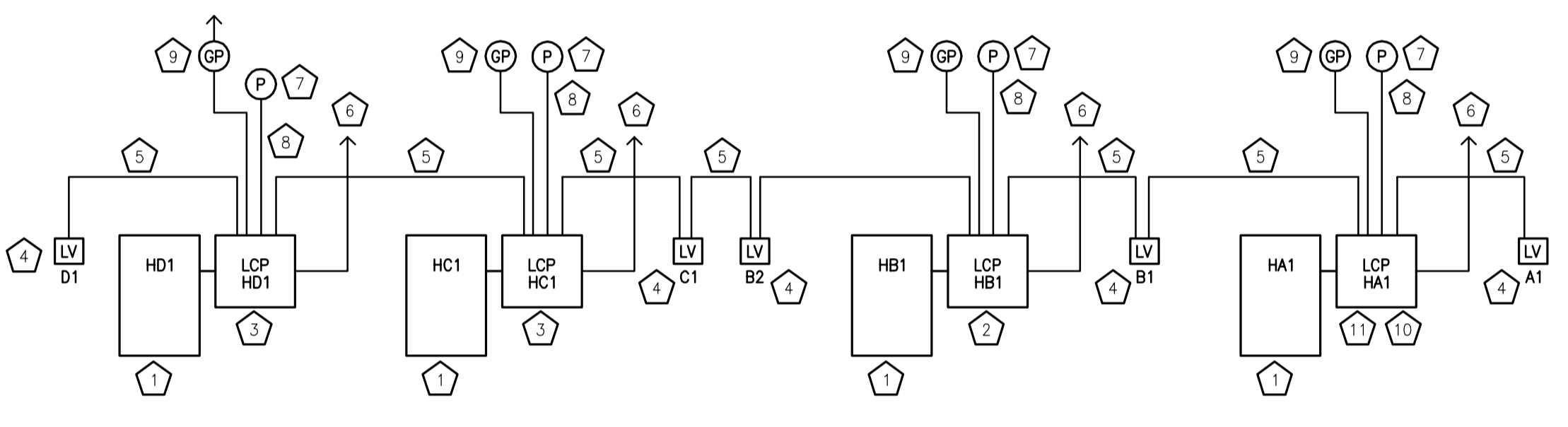
3-WAY SWITCHING  
CEILING OCCUPANCY SENSOR  
W/ TWO LEVELS LIGHTING  
SCALE: N.T.S.

**GENERAL PLAN NOTES FOR DETAIL 5**

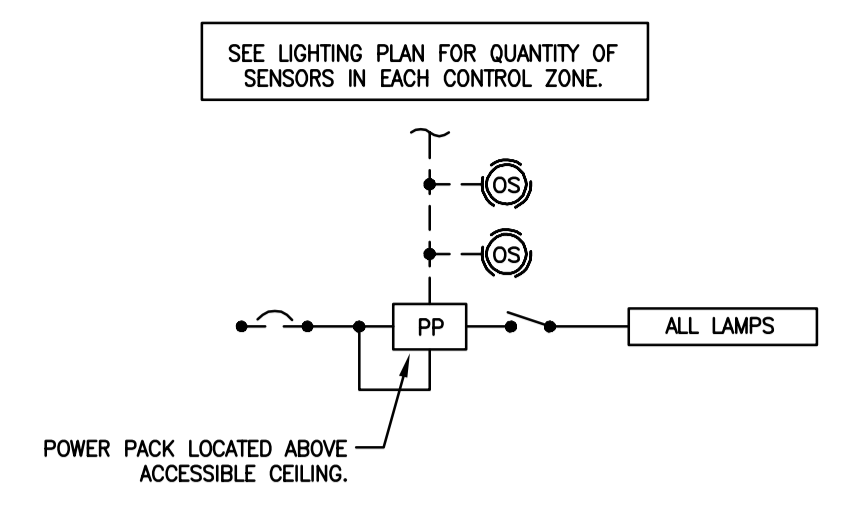
- THIS DIAGRAM IS NOT INTENDED TO BE A FIELD WIRING DIAGRAM THAT INDICATES SPECIFIC WIRING AND CONNECTION REQUIREMENTS. DIAGRAM INDICATES GENERAL SYSTEM COMPONENTS AND ARRANGEMENT ONLY. COMPLETE SYSTEM INSTALLATION SHALL BE AS RECOMMENDED BY EQUIPMENT MANUFACTURER ACCORDING TO SHOP DRAWINGS AND FIELD WIRING DIAGRAMS FURNISHED BY THE MANUFACTURER.
- VERIFY ALL LOCATIONS FOR EQUIPMENT ON SITE WITH OWNER.
- EQUIPMENT CATALOG NUMBERS LISTED ON DIAGRAM IS EQUIPMENT MANUFACTURED BY LC&D.

**DETAIL 5 - SPECIFIC NOTES**

- 480 / 277V BRANCH CIRCUIT PANEL SERVING LIGHTING IN RESPECTIVE AREA. REFER TO LIGHTING FLOOR PLANS FOR CIRCUIT NUMBERS.
- LIGHTING RELAY MASTER CONTROL PANEL CAT. NO. GR2432 LT INT 32NCL DTC MOD DV/GR2432 LT ENC SM NE1.
- LIGHTING RELAY REMOTE CONTROL PANEL CAT. NO. GR2432 LT INT 32NCL REMOTE DV/GR2432 LT ENC SM NE1.
- LOCAL LOW VOLTAGE MANUAL CONTROL SWITCH CH8 WP BWH PWH. VERIFY QUANTITY OF BUTTONS TO ACCOMMODATE NUMBER OF CONTROL ZONES. INCLUDE ENGRAVED NAMEPLATES TO IDENTIFY ZONES SERVED.
- CAT 5 PATCH CABLE WITH RJ45 CONNECTORS.
- 277V VOLT LIGHTING CIRCUITS, SEE DRAWINGS FOR CIRCUIT NUMBERS.
- OUTDOOR DIGITAL PHOTOSENSOR GR2400PC12W0 MOUNT WHERE APPROVED BY ARCHITECT ON NORTHSIDE OF BUILDING.
- 2 #18
- INDOOR GLOBAL PHOTOSENSORS #RW/GR2400PC3 FOR CONTROL OF SKYLIGHT DAYLIT AREAS. BASE BID CONTROL WITH PHOTOSENSORS. ALT BID MANUAL DEVICES. VERIFY QUANTITY REQUIRED ON FLOOR PLANS.
- LOCATE A SECOND RELAY PANEL ON THE MEZZANINE LEVEL.
- LIGHTING RELAY REMOTE CONTROL PANEL CAT. NO. GR2416 LT INT 16NCL REMOTE DV/GR2416 LT ENC SM NE1.

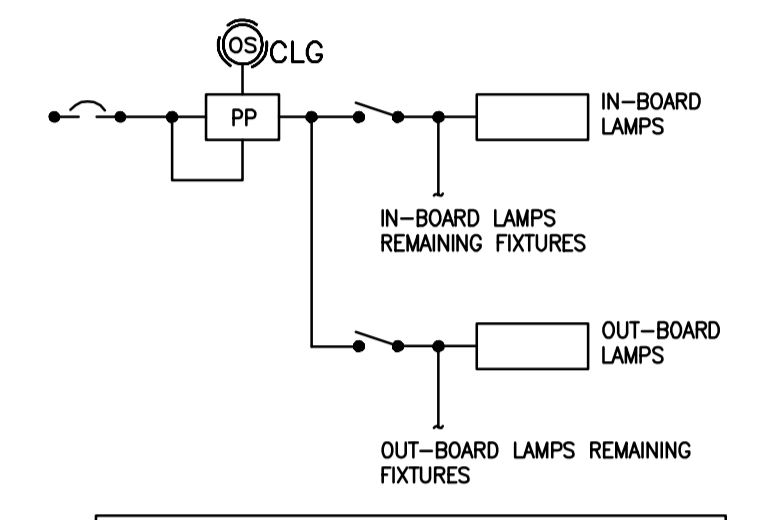


LIGHTING CONTROL SYSTEM DIAGRAM  
SCALE: N.T.S.



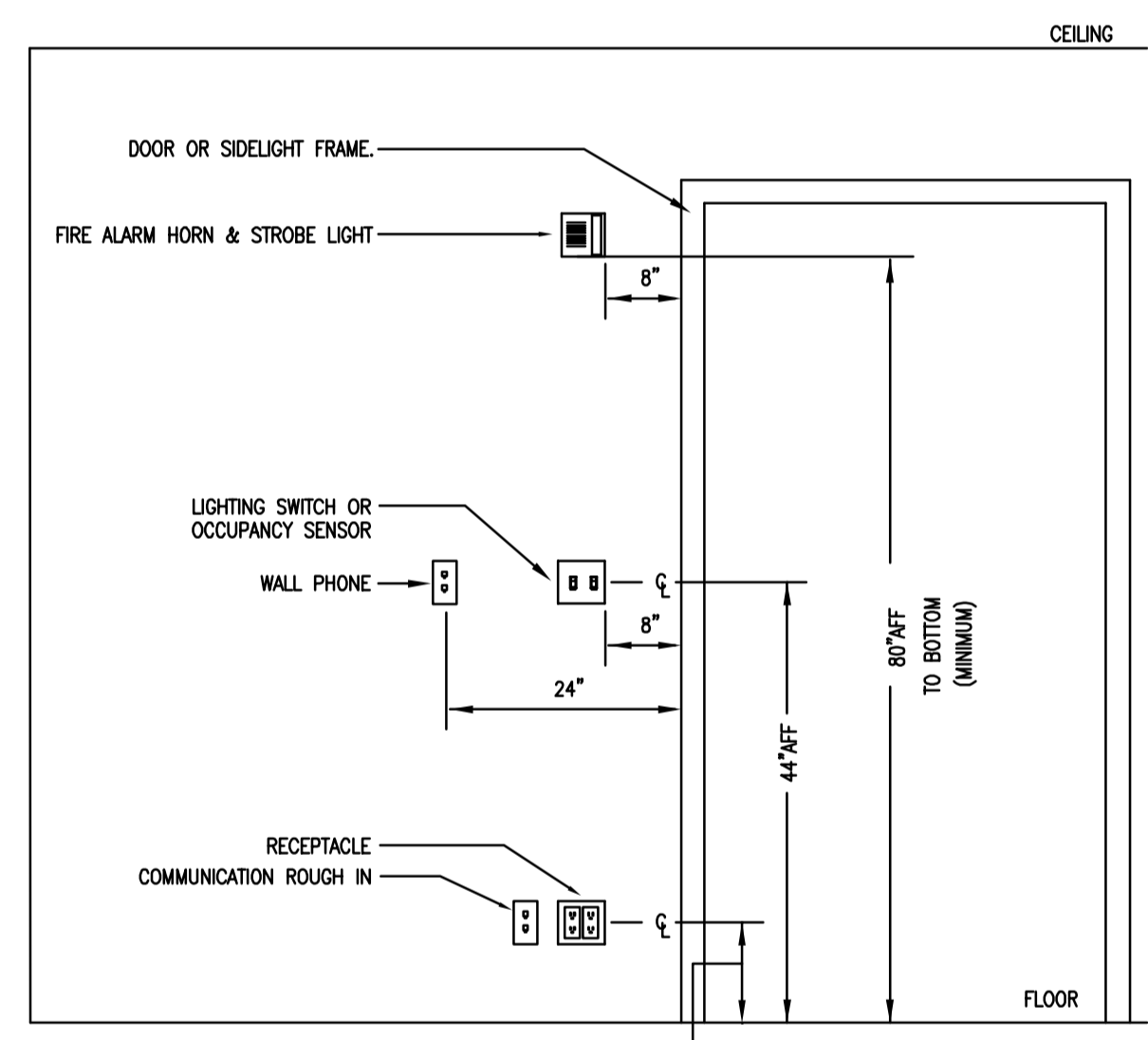
DETAIL IS SCHEMATIC AND INTENDED TO ILLUSTRATE SWITCHING INTENT. VERIFY ACTUAL INSTALLATION WITH MANUFACTURER'S REQUIREMENTS.

CEILING OCCUPANCY SENSOR  
W/ SINGLE POLE SWITCH  
SCALE: N.T.S.



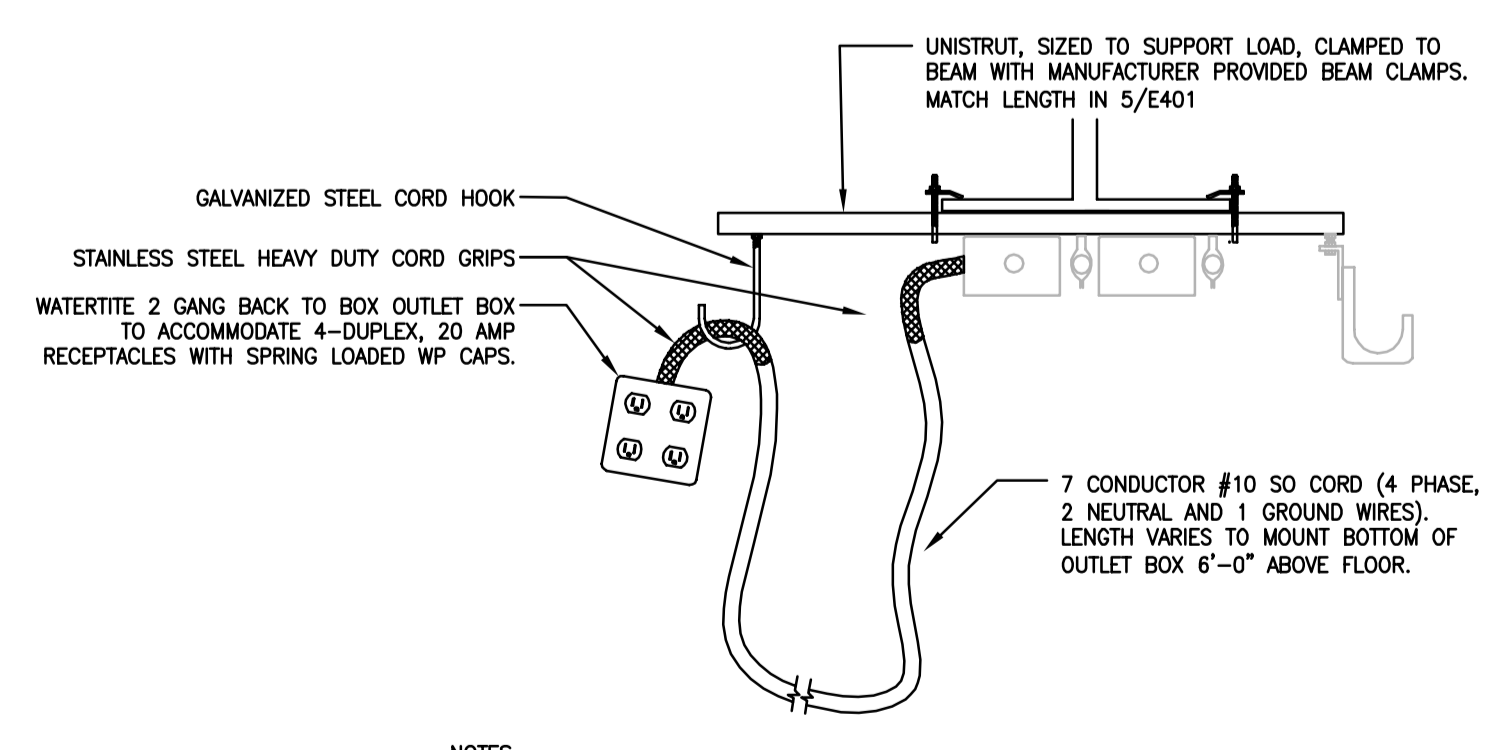
DETAIL IS SCHEMATIC AND INTENDED TO ILLUSTRATE SWITCHING INTENT. VERIFY ACTUAL INSTALLATION WITH MANUFACTURER'S REQUIREMENTS.

CEILING OCCUPANCY SENSOR  
W/ TWO LEVELS LIGHTING  
SCALE: N.T.S.



GENERAL NOTES:  
NOT ALL DEVICES WILL BE PRESENT AT EACH ROOM ENTRY. THE INTENT OF THIS ELEVATION IS TO EMPHASIZE THAT A VERTICAL ALIGNMENT OF DEVICES IS REQUIRED.

DEVICE MOUNTING DETAIL  
SCALE: N.T.S.



NOTES:  
- SEE DETAIL 7/E401 FOR ADDITIONAL MOUNTING INFORMATION.  
- PROVIDE MOCK-UP FOR APPROVAL BY OWNER/ARCHITECT BEFORE ANY FINAL FABRICATION.

CORD DROPS  
SCALE: N.T.S.

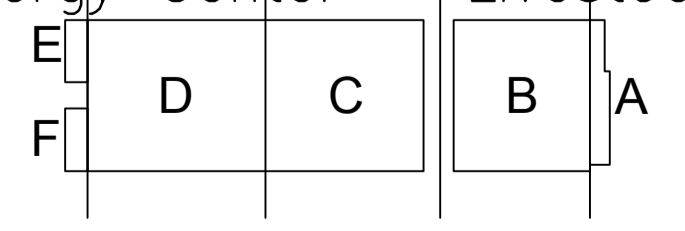
File: K:\2013\20130202\20130202\_02 - ALLIANT ENERGY CENTER - LIVESTOCK & EXHIBITION SPACE EXPANSION\2013027\_02 - Alliant Energy Center - Livestock and Exhibition Hall\Electrical\2013027\_02-E401.DWG

DRAWING SET	CD
COPYRIGHT	2013
FILE NAME	2013027_02-E401.DWG
REVISIONS	ADDENDUM #2 11-14-13 CONST. SET 01-08-14

DRAWN	KK
CHECKED	AS
DATE	10-29-13
PROJECT NO.	2013027_02
PROJECT TITLE	

ALLIANT ENERGY  
CENTER PAVILIONS  
BID # 313072

1919 ALLIANT ENERGY CENTER WAY  
MADISON, WISCONSIN 53713



ELECTRICAL DETAILS

SHEET NO.  
**E401**