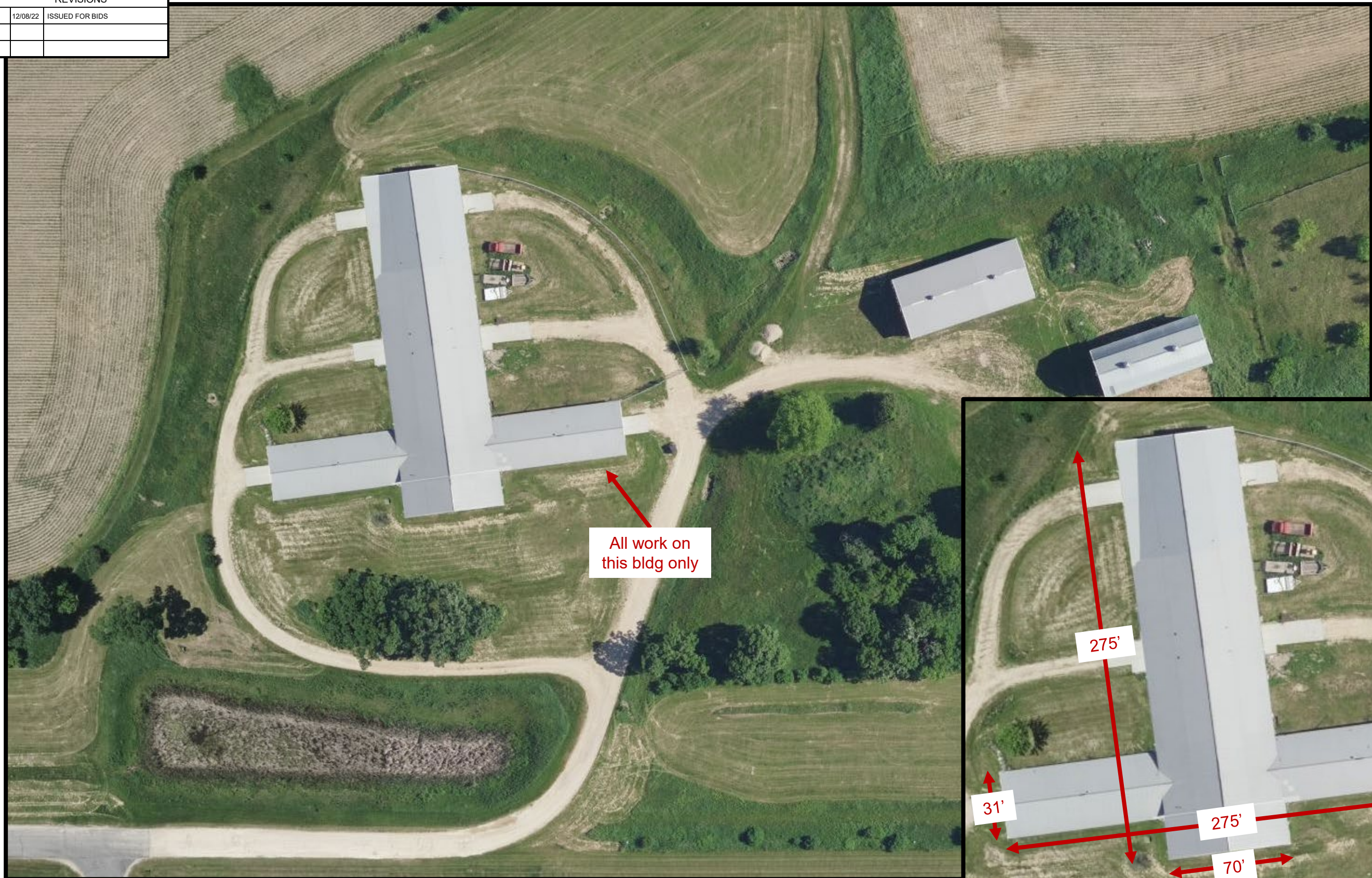
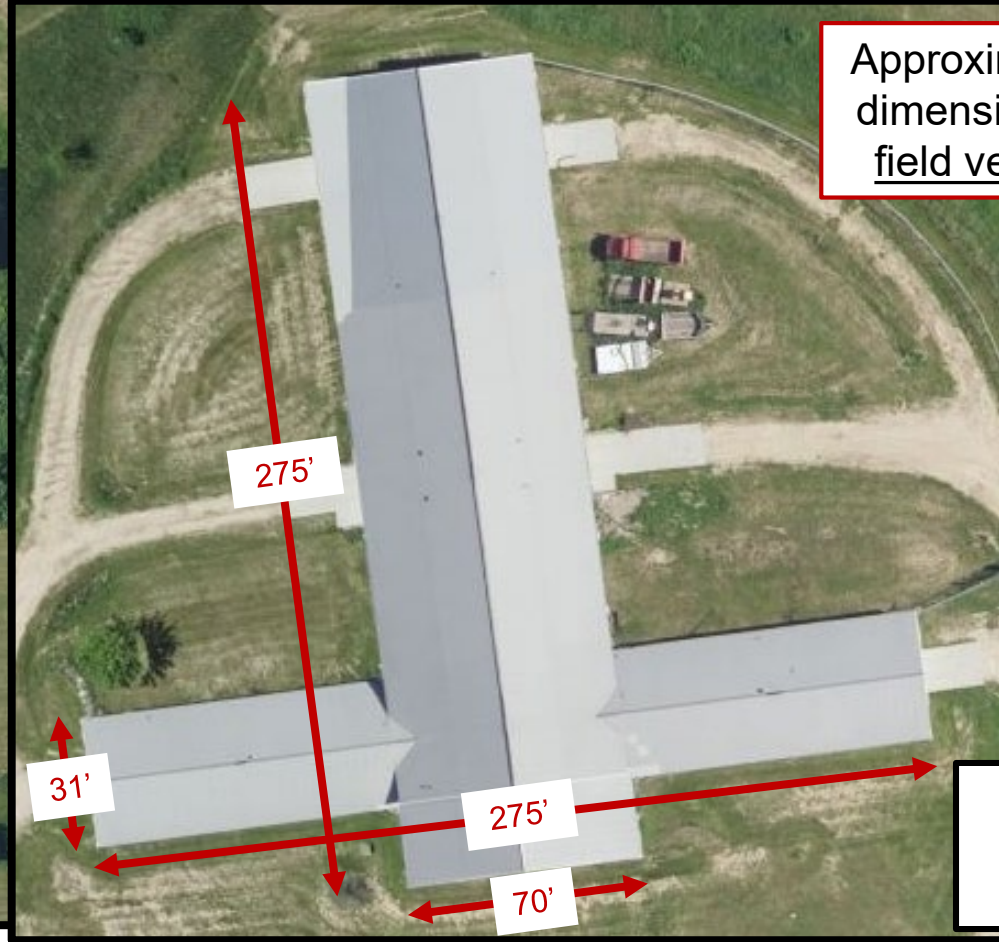


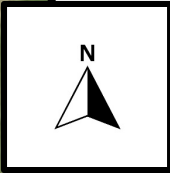
REVISIONS	
12/08/22	ISSUED FOR BIDS



All work on this bldg only



Approximate dimensions; field verify



DANE COUNTY PUBLIC WORKS
ENGINEERING DIVISION

PROJECT NO.:	322043	DATE:	12/08/22
DRN BY:	N/A	C'KD BY:	SC
SCALE:	N/A		

DANE COUNTY SHERIFF'S OFFICE
SADDLEBROOK PROPERTY - 5656 ENCHANTED VIEW LANE
WAUNAKEE, WISCONSIN

FIGURE 1
SITE PLAN & BUILDING SIZE

REVISIONS	
12/08/22	ISSUED FOR BIDS



Typical examples of envelope repairs



Devices to be demolished



REVISIONS	
12/08/22	ISSUED FOR BIDS

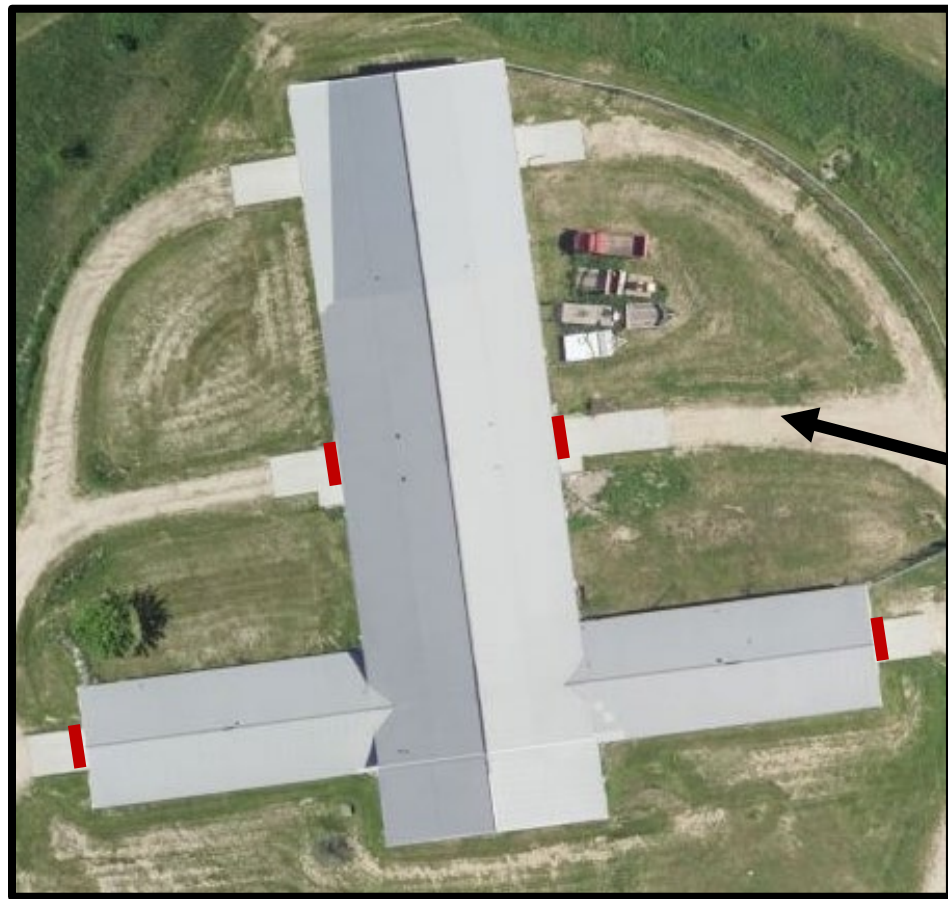


Base Bid:

- * Colorized version of south exposure
- * Entire building, same color except white trim around windows, doors & outside corners
- * All siding is oriented horizontally



REVISIONS	
12/08/22	ISSUED FOR BIDS



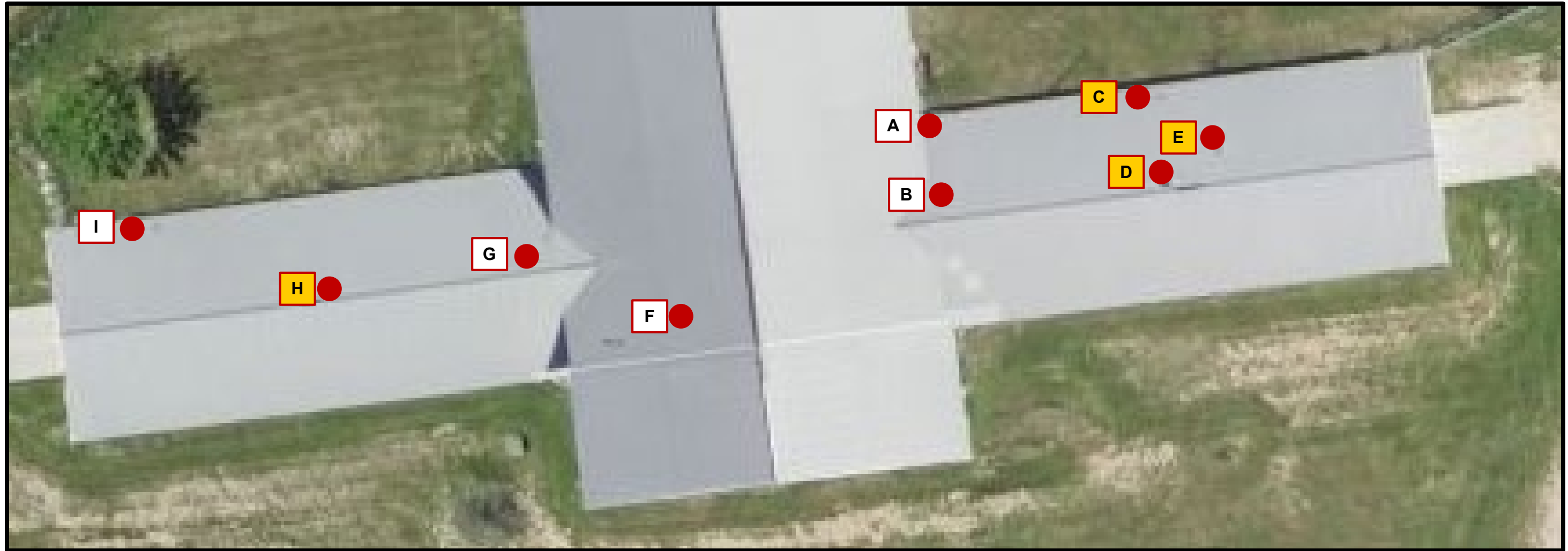
Base Bid: locations of door trim replacement
 ■ Overhead door



Base Bid: column to be replaced



REVISIONS	
12/08/22	ISSUED FOR BIDS



● Approximate location of roof penetrations

ⓧ Penetration designation



Base Bid: seal roof penetrations at orange colored locations C, D, E & H



REVISIONS	
12/08/22	ISSUED FOR BIDS



Alternate Bid 1: roof panel repairs at locations J & K

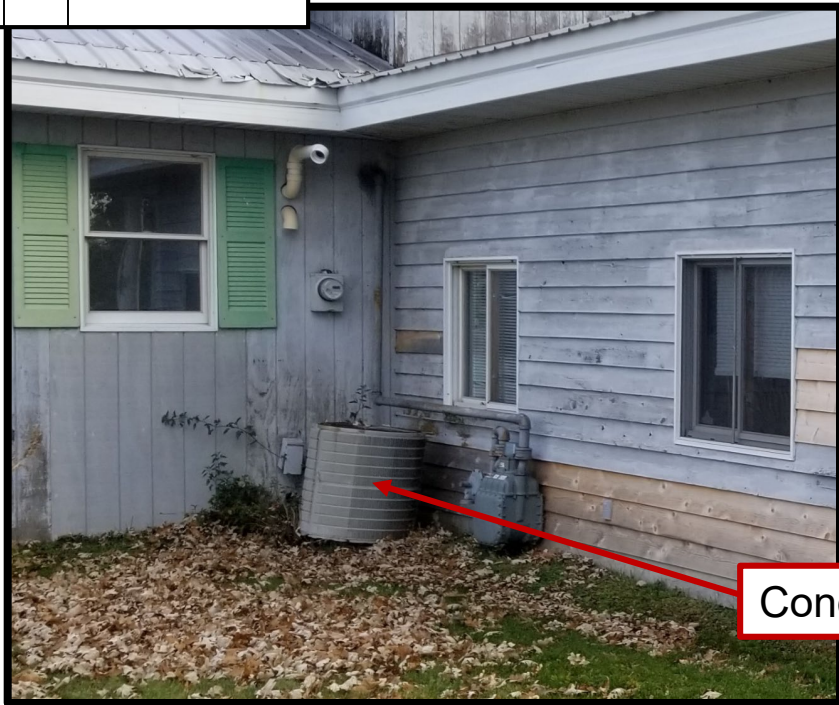
-  Approximate location of roof repairs (Alt Bid 1)
-  Roof panel repair designation



Alternate Bid 1: snow guard locations



REVISIONS	
12/08/22	ISSUED FOR BIDS



Condensing unit



North wall



Can in soffit

Typical of many



REVISIONS	
12/08/22	ISSUED FOR BIDS



Alternate Bid 3:

- * Secondary accent color added below windows; siding is vertically oriented
- * Windows on east & west exposures would have same accent color below windows as depicted above

