



DEPT. OF
HIGHWAY &
DIVISION

1919 Alliant Energy Center Way
Madison, Wisconsin 53713
Office: 608/266-4018 ♦ Fax: 608/267-1533
Public Works Engineering Division
Public Works Solid Waste Division

ADDENDUM

MARCH 22, 2017

ATTENTION ALL REQUEST FOR BID (RFB) HOLDERS

RFB NO. 317012 - ADDENDUM NO. 1

DAY RESOURCE CENTER REMODELING

BIDS DUE: MARCH 28, 2017, 2:00 PM. DUE DATE AND
TIME ARE NOT CHANGED BY THIS ADDENDUM.

This Addendum is issued to modify, explain or clarify the original Request for Bid (RFB) and is hereby made a part of the RFB. Please attach this Addendum to the RFB. **Acknowledge this addendum on the Bid Form.**

PLEASE MAKE THE FOLLOWING CHANGES TO THE DOCUMENTS:

1. TABLE OF CONTENTS (TOC)

Replace: Please delete the current Table of Contents and replace with new Table of Contents issued with this Addendum.

2. BID FORM

Replace: Please delete the current Bid Form and replace with new Bid Form issued with this Addendum.

3. INSTRUCTIONS TO BIDDERS (ITB)

Change: Article 19. Work By Owner. Revise to read "A. Abatement by Owner."

4. CHANGES TO SPECIFICATIONS:

1. Add Section 05 31 20 Corrugated Metal Roof Deck, attached.
2. Section 06 20 00 Finish Carpentry
 - a. Page 3, line 10 2.05.A.7. add "4. Exposed Roof Deck, Tongue and Groove, V Groove, 1"x6" nominal."
3. Section 07 53 23 Ethylene-Propylene-Diene-Monomer Roofing.
 - a. Page 8, Section 2.03 A. Insulation Type 2. Revise slope to read "factory tapered 1/8"/foot."
 - b. Beginning on Page 9, 3.04 B. Omit item 2 and 3 reference to loose lay insulation.
4. 07 62 00 Sheet Metal Flashing and Trim
 - a. Page 3, line 15, 2.03.A.1. revise coping, fascia and trim to .063 inch thick.
5. Section 09 84 13 Acoustical Treatment
 - a. Part 2 Products, A. 1. AP-1, Page 3, Line 16. Add "E. ACGI (Architectural Components Group, Inc), Wood Encore System."

- b. Part 2 Products, A. 2. AP-2, Page 3, Line 20. Revise to read: "C. 3 1/4" blade height x 59 1/4" x 5/8" blade thickness with 6 blades per 12 1/4". No perimeter trim."
 - c. Page 3, Line 25, add "g. ACGI, Wood Grille Systems, Backer Series 3, square profile, similar dimensions, coordinate with ACT ceiling to provide a complete installation and provide insulation if required in lieu of ACT."
 - d. Page 3, Line 27, Part 2 Products, A. Add: "3. AP-3 ACGI Linear Open Series 2 Wood Wall System. Veneer Species to match AP-1, 8' and/or 10' length, black non-woven felt where reveals shown on elevation. 3 1/4" and 5 1/2" widths, see elevation. Or equal by Decoustics or approved equal."
6. Section 10 22 26 Operable Panel Partitions
- a. Page 2 line 46 revise to read: "3. Or equal model by Hufcor, Moderco or approved equal."
7. Specification 10 51 13
- a. Revise page 1 line 44, 2.01.B. to read "Or equal by Olympus Lockers and Storage Products or approved equal."
8. Add Specification Section 12 21 13 Horizontal Louver Blinds, attached.
9. Add Specification Section 12 24 13 Roller Window Shades, attached.
10. Section 211313 - Wet -Pipe Sprinkler Systems
- a. Page 211313-8, line 41, after the word "forms", add the following;
"Include all test forms in O & M manuals".
 - b. Page 211313-8, line 42, add the following;
"LEAK DAMAGE
This contractor shall be responsible during the installation and testing periods of the sprinkler system for any damage to the work of others, to the building, its contents, etc. caused by leaks in any equipment, by unplugged or disconnected pipes, fittings, etc. or by overflow and shall pay for the necessary equipment, or landscaping damaged by such leakage".
 - c. Page 211313-9, line 7, add the following;
"Semi-recessed sprinkler heads shall be used for all suspended ceiling types with lay-in or gypsum board. Locate sprinkler heads to coordinate with reflected ceiling plan maintaining minimum clearances from obstructions, ceilings and walls. Install sprinkler heads level in locations not subject to spray pattern interference. When installed in new lay-in ceilings, sprinkler heads shall be centered in tile.. A one inch tolerance for sprinkler placement will be acceptable. When installed in decorative ceilings, the head locations shall be coordinated with the ceiling systems and shall be approved by Architect".
11. Section 220500 - Common Work Results for Plumbing
- a. Page 220500-3, line 20, after the word "Bibb", add the "Thermostatic Mixing Valve TC-1".
 - b. Page 220500-3, line 26, add "Plumbing Fixtures".
12. Section 221100 - Facility Water Distribution
- a. Page 221100-3, lines 22 & 23, delete entire sentence starting with the word "Mechanically".
13. Section 224200 - Commercial Plumbing Fixtures
- a. Page 224200-1, line 41, after the word "Zurn", add the word "Sloan".
 - b. Page 224200-2, line 8, change "3 WC-1" to "2 WC-1"
 - c. Page 224200-2, line 55, change "Model LVS-4" to "LVS-3".
 - d. page 224200-3. line 11, change "Elkay ELUG" to "Elkay ELUH".
14. 27 41 13 Architecturally Integrated Audio Video Equipment, 2.2 Equipment, page 8 Add: The following are acceptable "or equal" substitutes:
- a. LG – 65UX340C – 65" Commercial UHD TV for NEC E655 at location AV-121
 - b. LG – 49UX340C – 49" Commercial UHD TV for NEC E505 at location AV-122; AV-223
 - c. LG – 79UX340C – 79" Commercial UHD TV for NEC E805 at location AV-221
15. Specification Section 28 13 00
- a. Page 28 13 00-6, delete 2.08B as written and substitute B: "When activated, system to contact owner designated alarm monitoring company who will call 911 and cell phone of security guard on premises. Provide security panel, wiring and all necessary connectivity to provide this function."

16. Specification Section 28 23 00
 - a. Page 28 23 00-5, line 3: Provide AXIS camera Station S1030Mkll.
 - b. Page 28 23 00-5, line 9: Change “9TB” to “12TB”.
17. Specification Section 23 09 93
 - a. HUMIDITY CONTROL. With humidity control enabled and the return air relative humidity exceeds the high limit set point the cooling shall be enabled to dehumidify the mixed air. If the unit discharge temperature falls below the discharge air set point the heating shall be modulated to raise the unit discharge temperature to the required set point. Once the return air relative humidity reaches the low limit set point the humidity control cooling shall be disabled unless cooling is required to maintain the cooling set point.
18. Add the attached DDC Input/Output Summary Tables, 4 pages

5. CHANGES TO DRAWINGS:

1. C100
 - a. Add note near entrance drive to “See Alternate Bid A”.
 - b. Add note at the northeast corner of the courtyard to “Remove 375 SF of asphalt pavement and replace with shredded bark mulch in the enclosed courtyard. Confirm location with Owner.”
2. D200
 - a. Add demolition note 12 symbol at exterior window in Office 210.
 - b. Add demolition note 12: Demo existing plan sill.
 - c. Add general demolition note: remove existing window coverings for installation of window coverings.
3. A200
 - a. First floor: At East wall of Restroom 110 indicate Partition Type 9G.
 - b. Second floor: At Office 210 indicate window type B interior window and add note for Plastic laminate sill with 1 ½” profile at existing exterior window rough opening.
4. A203 Roof Plan
 - a. Revise Demolition note to read: “Demolish Ballasted Rubber Membrane, Insulation, Gravel Stop, Coping and Blocking. Field Verify if any blocking is in acceptable condition for reuse – confirm with A/E.”
5. A300
 - a. Second Floor Family Multi-Purpose Overflow: “Add note to shift area of exposed structure plan north approximately 2’ to conceal existing ductwork, V.I.F. Extend soffit type 8A700 plan east past the existing stair to the exterior wall with ACT bottom of soffit.”
 - b. Second Floor Resource Center 205: “Extend soffit at exposed structure plan north approximately 2’-0”, V.I.F. to conceal ductwork.”
6. A600
 - a. Refer to attached revised A600 for revised covered fence detail and additional concrete walk detail (Alternate Bid A).
7. A700
 - a. Soffit Detail 8A700: Add note: “Alternate Bid B, in lieu of WD-1 and framing, provide AP-3, see specification 09 84 13, on furring channels per manufacturer’s requirements with sound attenuation blanket.”
8. A701
 - a. Partition Type 1A: Revise note to read “Sound Attenuation Blanket”
 - b. Partition Type 1B: Revise note to read “Sound Attenuation Blanket”
 - c. Partition Type 9F
 - i. Add note: “Alternate Bid B, in lieu of WD-1 and framing, provide AP-3, see specification 09 84 13, on furring channels per manufacturer’s requirements with sound attenuation blanket.”
 - ii. Revise note to read “black non-woven felt to prevent insulation from being visible.”

- iii. Add note: See floor plan where noted over existing wall in lieu of CMU shown.
- 9. S101
 - a. Detail 4S101, revise note at plywood decking to read “See architectural A600 for enclosure.”
 - b. Detail 11S101, add note: “Contractor to avoid existing roof drain with new connection. Field verify and provide shop drawing.”
- 10. Sheet FP100
 - a. Fire Riser Diagram
 - b. Delete the sentence that reads as follows; "(All pipe, valves, fittings downstream of tee by Fire Protection Contractor)".
- 11. PD100
 - a. On the First and Second Floor Plumbing Demolition Plans, adjacent the toilet rooms add a demolition symbol 12.
 - b. Add new demolition note 12 to Demolition Notes, to read as follows; "Remove wall hung electric water cooler, including cold water, waste and vent piping".
- 12. Sheet P100
 - a. In room 102, add 2" size to branch drain that serves sink S-1 at second floor.
 - b. Adjacent room 127, change note that reads, "1-1/2" W up", to read, "1-1/2" V up".
- 13. M100
 - a. At First Floor Plan General Demolition Notes, ADD: Note 5. Where piping to be removed is insulated the removal shall include removal of the pipe insulation.
- 14. M101
 - a. At Room 122, Laundry ADD: Key Note 15: The laundry dryer duct shall be 12 inch round full length. At each dryer make a 45 degree 4 inch takeoff the 12 inch duct turn 45 degree elbow down and drop 4 inch round duct down to 6 feet above the floor at the center of each of 7 dryer locations and provide a removable cap on the open duct end.
- 15. M103
 - a. At Mechanical Room 105 New Work Plan, B/M103, locate the expansion tank in the corner of the room where the below the blanked off louver.
 - b. At Mechanical Room 105 New Work Plan, locate the chemical bypass feeder approximately where in expansion tank is located. Pipe 1 inch to the feeder inlet from the 2-1/2 inch common HWP-1/HWP-2 pump discharge piping and pipe 1 inch from the feeder outlet to the common 2-1/2 inch HWP-1/HWP-2 pump inlet piping. Provide a ball valve on the inlet and outlet piping near the feeder. Pipe the feeder drain to the room floor drain and provide a ball valve on the drain line.
 - c. At Mechanical Room Piping Schematic C/M103, add the chemical bypass feeder to the schematic, piped as described in number 2 above.
- 16. M105
 - a. Refer to “Variable Air Volume Single Duct Terminal Unit Schedule”. Units VAV-3, VAV-9 and VAV-17 are “TWO ROW COILS” all other units are “ONE ROW COILS”.
 - b. Refer to “VAV Fan Powered Terminal Unit Schedule”: Rename VAV-2 to FPB-2, VAV-4 to FPB-4, and VAV-6 to FPB-6.
 - c. Insert the attached “DDC INPUT/OUTPUT SUMMARY SCHEDULE” (POINT LISTS) for the following:
 - a. RTU-1, Rooftop Unit.
 - b. Boilers and Hot Water Pumps
 - c. Variable Air Volume Reheat Terminals (VAV)
 - d. Fan Powered Variable Air Volume Reheat Terminals (FPB)
- 17. E001 Site Plan - Electrical

- a. Provide bracket for pole mounted camera or camera suitable for pole mounting without bracket as manufactured by Axis.
 - b. Provide fiber from pole mounted camera back to server room security alarm control panel.
18. E200 Floor Plan – Power and Systems
- a. First Floor Reception Desk – Nurse Call annunciator panel #A4020-TG shall be located on wall near desk. Provide 120-volt power from circuit N1-46. Headend and power supplies may be located in room #131.
 - b. Elevator Equipment Room #103 – Add one smoke detector
 - c. Elevator Equipment Room #103 – Provide three junction boxes with control modules for future elevator recall.
 - d. Multi-Purpose #126 (wall from elevator along kitchen #127) – Add one 15cd strobe on wall.
 - e. Shower rooms #111, #112, #113, #118, #119, #120, and #121 – 15cd strobe shall be weather-proof type.
 - f. Kitchenette #204 – Provide one 15cd strobe on wall near door.
 - g. Provide one smoke duct detector with sampling tube for RTU-1.
19. E300 Floor Plan – Lighting First Floor
- a. Restrooms/Shower #110 –#121 & Stairs #B - Provide help call dome light above entrance to room as noted in specification section 27 52 23.
 - b. Front and rear entry down lights should be labeled as “OE” in lieu of “OA”-Typical of three (3).
 - c. Multi—Purpose #104 – Provide ceiling mounted occupancy sensor centered in space to control area lights.
 - d. Corridor #123 – Provide ceiling mounted occupancy sensor centered in space to control area lights.
 - e. Multi—Purpose #124 – Provide ceiling mounted occupancy sensor centered in space to control area lights.
 - f. Multi—Purpose #126 – Provide two (2) ceiling mounted occupancy sensors centered in space to control area lights.
20. E600 Electrical Schedules – Light Fixture Schedule
- a. Fixture type “G” and “H”: Electrical contractor shall provide an equivalent fixture as manufactured by either New Star Lighting, Jesco Lighting Group, or Ohyama Lights.

5. PREBID SIGN-UP SHEET

Add prebid sign-up sheet, issued with this addendum

If any additional information about this Addendum is needed, please call Eric Urtes at 608/266-4798, urtes.eric@countyofdane.com.

Sincerely,
Eric Urtes, AIA
 Project Manager

Enclosures:

- Table of Contents (TOC) – Addendum#1
- Bid Form- Addendum#1
- Specification Section 05 31 20
- Specification Section 12 21 13
- Specification Section 12 24 13
- DDC Input/Output Summary Tables, 4 pages
- Drawings: A600, P101, P200, P201
- Pre-Bid Sign-Up Sheet

TABLE OF CONTENTS FOR RFB NO. 317012

DIVISION 00 - PROCUREMENT AND CONTRACTING REQUIREMENTS

- Project Manual Cover Page
- Table of Contents
- Advertisement for Bids (Legal Notice)
- Best Value Contracting Application
- Instructions to Bidders
- Bid Form
- Fair Labor Practices Certification
- Sample Public Works Contract
- Sample Bid Bond
- Sample Performance Bond
- Sample Payment Bond
- Equal Benefits Compliance Payment Certification Form
- General Conditions of Contract
- Supplementary Conditions

DIVISION 01 - GENERAL REQUIREMENTS

- 01 00 00 - Basic Requirements
- 01 74 19 - Construction Waste Management, Disposal & Recycling

DIVISION 02 - EXISTING CONDITIONS

- 02 41 19 Selective Structure Demolition

DIVISION 03 - CONCRETE

- 03 30 00 Cast-In-Place Concrete
- 03 36 02 Special Concrete Floor Finishes

DIVISION 04 - MASONRY

- 04 05 19 Masonry Anchorage and Reinforcing
- 04 10 00 Mortar and Masonry Grout
- 04 20 00 Unit Masonry

DIVISION 05 - METALS

- 05 12 00 Structural Steel Framing
- 05 31 20 Corrugated Metal Roof Deck
- 05 40 00 Cold-Formed Metal Framing
- 05 50 00 Metal Fabrications

DIVISION 06 - WOOD, PLASTICS AND COMPOSITES

- 06 10 00 Rough Carpentry
- 06 20 00 Finish Carpentry
- 06 41 16 Plastic Laminate Clad Casework
- 06 61 18 Solid Surface

DIVISION 07 - THERMAL AND MOISTURE PROTECTION

- 07 21 00 Building Insulation
- 07 42 13 Metal Wall Panels
- 07 53 23 Ethylene-Propylene-Diene-Monomer Roofing
- 07 62 00 Sheet Metal Flashing and Trim
- 07 92 00 Joint Sealants

DIVISION 08 - OPENINGS

- 08 11 13 Hollow Metal Doors and Frames
- 08 14 16 Flush Wood Doors
- 08 31 13 Access Doors and Frames
- 08 33 00 Coiling Doors and Grilles
- 08 41 00 Aluminum-Framed Entrances and Storefronts
- 08 71 00 Door Hardware
- 08 80 00 Glazing

DIVISION 09 - FINISHES

- 09 29 00 Gypsum Board
- 09 51 00 Acoustical Ceilings
- 09 65 00 Resilient Flooring
- 09 67 16 Epoxy Flooring
- 09 84 13 Acoustical Treatment
- 09 90 00 Painting

DIVISION 10 - SPECIALTIES

- 10 14 00 Information Specialties
- 10 22 26 Operable Panel Partitions
- 10 28 00 Toilet and Bath Accessories
- 10 41 16 Emergency Access Key Boxes
- 10 44 13 Fire Extinguishers and Cabinets
- 10 51 13 Lockers
- 10 67 00 Steel Shelving

DIVISION 11 – EQUIPMENT

- 11 42 16 Food Preparation Surfaces

DIVISION 12 – FURNISHINGS

- 12 21 13 Horizontal Louver Blinds
- 12 24 13 Roller Window Shades.

DIVISION 21 - FIRE SUPPRESSION

- 210500 Common Work Results for Fire Suppression
- 210529 Hangers and Supports for Fire Suppression Piping and Equipment
- 211313 Wet-Pipe Sprinkler Systems

DIVISION 22 - PLUMBING

- 220500 Common Work Results for Plumbing
- 220514 Plumbing Specialties
- 220515 Piping Specialties
- 220523 General Duty Valves for Plumbing Piping
- 220529 Hangers and Supports for Plumbing Piping and Equipment
- 220700 Plumbing Insulation
- 221100 Facility Water Distribution
- 221300 Sanitary Waste and Vent
- 222000 Natural Gas Fuel System
- 223000 Plumbing Equipment
- 224200 Commercial Plumbing Fixtures

DIVISION 23 - HEATING, VENTILATING AND AIR CONDITIONING (HVAC)

- 23 05 00 Common Work Results for HVAC
- 23 05 13 Common Motor Requirements for HVAC Equipment

- 23 05 14 Variable Frequency Drives
- 23 05 15 Piping Specialties
- 23 05 23 General Duty Valves for HVAC
- 23 05 29 Hangers and Supports for HVAC Piping and Equipment
- 23 05 93 Testing, Adjusting and Balancing for HVAC
- 23 07 00 HVAC Insulation
- 23 09 14 Electric Instrumentation and Control Devices for HVAC
- 23 09 24 Direct Digital Control System for HVAC
- 23 09 25 Integrated Automation System for HVAC
- 23 09 93 Sequence of Operations for HVAC Controls
- 23 11 00 Facility Fuel Piping
- 23 21 13 Hydronic Piping
- 23 21 23 Hydronic Pumps
- 23 25 00 HVAC Water Treatment
- 23 31 00 HVAC Ducts
- 23 33 00 Air Duct Accessories
- 23 34 00 HVAC Fans
- 23 36 00 Air Terminal Units
- 23 37 13 Diffusers, Registers and Grilles
- 23 52 00 Heating Boilers
- 23 74 00 Packaged Roof Top Heating – Cooling Units
- 23 82 00 Heating Terminal Units

DIVISION 25 – INTEGRATED AUTOMATION

- 25 00 00 Integrated Access Control Systems (IACS)

DIVISION 26 - ELECTRICAL

- 26 05 00 General Electrical Requirements
- 26 05 11 Basic Materials and Methods
- 26 09 23 Occupancy Sensor Lighting Control System
- 26 43 13 Transient Voltage Surge Supression
- 26 51 13 Lighting

DIVISION 27 - COMMUNICATIONS

- 27 10 00 Telecommunications Distribution System
- 27 41 13 Architecturally Integrated Audio-Visual Equipment
- 27 52 23 Help Call System

DIVISION 28 - ELECTRONIC SAFETY AND SECURITY

- 28 13 00 Access Control and Intrusion Detection
- 28 23 00 Video Surveillance System
- 28 31 00 Fire Alarm System

DIVISION 32 - EXTERIOR IMPROVEMENTS

- 32 31 16 Welded Wire Fences and Gates
- 32 93 00 Plants

DRAWINGS

Plot drawings on 24" x 36" (ARCH D)

GENERAL

G100 COVER SHEET, INDEX OF DRAWINGS AND SYMBOLS &
ABBREVIATIONS

CIVIL

C100 SITE PLAN AND GRADING PLAN

C200 UTILITY PLAN

LANDSCAPE

L100 LANDSCAPE PLAN

DEMOLITION

D200 DEMOLITION FLOOR PLANS

ARCHITECTURAL

A100 EXTERIOR ELEVATIONS

A200 FLOOR PLANS

A203 ROOF PLAN AND DETAILS

A300 REFLECTED CEILING PLANS

A500 CASEWORK SECTIONS

A600 EXTERIOR DETAILS

A700 DOOR SCHEDULE AND DETAILS

A701 PARTITION TYPES

A800 INTERIOR ELEVATIONS

A900 FINISH PLANS

STRUCTURAL

S101 STRUCTURAL PLANS AND DETAILS

S102 STRUCTURAL DETAILS

PLUMBING

PD101 PLUMBING DEMOLITION, SYMBOLS, ABBREVIATIONS AND SHEET
INDEX

P100 UNDERFLOOR PLUMBING PLAN AND DETAILS

P101 FIRST AND SECOND PLUMBING FLOOR PLANS

P200 WASTE AND VENT DIAGRAM

P201 DOMESTIC WATER AND FUEL GAS DIAGRAMS

FIRE PROTECTION

FP100 FIRST AND SECOND FIRE PROTECTION FLOOR PLANS

HVAC

M100	FIRST AND SECOND FLOOR HVAC - DEMOLITION PLANS
M101	FIRST AND SECOND FLOOR HVAC PLANS - NEW WORK
M102	FIRST AND SECOND FLOOR HVAC PIPING PLANS - NEW WORK
M103	ROOF PLAN HVAC DEMOLITION AND NEW WORK
M104	HVAC DETAILS
M105	HVAC SCHEDULES

ELECTRICAL

E000	SYMBOLS, ABBREVIATIONS, RISER DIAGRAM AND SHEET LIST
E001	SITE PLAN - ELECTRICAL
E100	FIRST AND SECOND FLOOR PLANS - ELECTRICAL DEMOLITION
E200	FIRST AND SECOND FLOOR PLANS - POWER AND SYSTEMS
E300	FIRST AND SECOND FLOOR PLANS - LIGHTING
E400	A/V RISER DIAGRAMS AND NOTES
E500	ELECTRICAL DETAILS
E600	ELECTRICAL SCHEDULES
E601	ELECTRICAL SCHEDULES

AUDIO VISUAL

AVS-2.1	AV DESIGN LAYOUT DEVICE MAP
AVS-3.1	AV DESIGN LAYOUT POWER-CONDUIT-PLATES
AVS-4.1	AV DESIGN LAYOUT FIRST FLOOR AV SCHEME

Name of Bidding Firm: _____

BID FORM

BID NO. 317012

PROJECT: DAY RESOURCE CENTER REMODELING

**TO: DANE COUNTY DEPARTMENT OF PUBLIC WORKS, HIGHWAY &
TRANSPORTATION PROJECT MANAGER
1919 ALLIANT ENERGY CENTER WAY
MADISON, WISCONSIN 53713**

NOTE: WISCONSIN STATUTE 77.54 (9M) ALLOWS FOR NO SALES & USE TAX ON THE PURCHASE OF MATERIALS FOR COUNTY PUBLIC WORKS PROJECTS.

BASE BID - LUMP SUM:

Dane County is inviting Bids for construction services, for the remodeling of the former Chamber of Commerce building to create a Day Resource Center for Dane County. Work includes the renovation of the approximately 12,800 SF two-story building and site improvements. The undersigned, having examined the site where the Work is to be executed and having become familiar with local conditions affecting the cost of the Work and having carefully examined the Drawings and Specifications, all other Construction Documents and Addenda thereto prepared by Dane County Department of Public Works, Highway & Transportation hereby agrees to provide all labor, materials, equipment and services necessary for the complete and satisfactory execution of the entire Work, as specified in the Construction Documents, for the Base Bid stipulated sum of:

_____ and _____ /100 Dollars
Written Price

\$ _____
Numeric Price

LUMP SUM ALLOWANCE

Provide a lump sum allowance to be included in the Base Bid of twenty thousand dollars (\$20,000.00). This allowance will be used for building identification signage including installation and design in coordination with the County, design team and City of Madison staff. Owner will provide the awarded general contractor with building signage and project requirements.

Twenty Thousand - - - - - and _____ 00 /100 Dollars
Written Price

\$20,000.00
Numeric Price

ALTERNATIVE BID A

Provide a 85' long x 6' wide raised concrete walk along the west property line of the Main Street Entrance driveway. Include an ADA accessible 1:20 slope to taper the walk down to existing asphalt and existing concrete sidewalk elevations. Include demolition of existing asphalt, repair of asphalt paving damaged by demolition, omit striping. See Detail 6A600.

_____ and _____ /100 Dollars
Written Price

\$ _____
Numeric Price

ALTERNATIVE BID B

Provide AP-3 system at partition type 9F and soffit detail 8A700 in lieu of WD-1 and furring. Refer to specification 09 84 13. See partition types on A701.

_____ and _____ /100 Dollars
Written Price

\$ _____

UNIT PRICING:

Add unit price for including the following items. All pricing to include rough-in, cabling and commissioning.

- Security Camera: add or delete one Camera per section 28 23 00 \$ _____
- Card Reader: add or delete one Proximity Card Reader per section 28 13 00: \$ _____
- Help Call System: State unit cost to add or delete one Cornell E-104-1WP per section 26 52 23: \$ _____
- First Floor Flat Panel Display Assemblies: cost to add or delete one AV-121 and one AV-122 per section 27 41 13: \$ _____

Receipt of the following addenda and inclusion of their provisions in this Bid is hereby acknowledged:

Addendum No(s). _____ through _____

Dated _____

Dane County Department of Public Works, Highway & Transportation must have this project completed by September 15, 2017. Assuming this Work can be started by April 21, 2017, what dates can you commence and complete this job?

Commencement Date: _____ Completion Date: _____
(final, not substantial)

I hereby certify that all statements herein are made on behalf of:

(Name of Corporation, Partnership or Person submitting Bid)

Select one of the following:

- 1. A corporation organized and existing under the laws of the State of _____, or
- 2. A partnership consisting of _____, or
- 3. A person conducting business as _____;

Of the City, Village, or Town of _____ of the State of _____.

I have examined and carefully prepared this Bid from the associated Construction Documents and have checked the same in detail before submitting this Bid; that I have full authority to make such statements and submit this Bid in (its) (their) (my) behalf; and that the said statements are true and correct. In signing this Bid, we also certify that we have not, either directly or indirectly, entered into any agreement or participated in any collusion or otherwise taken any action in restraint of free competition; that no attempt has been made to induce any other person or firm to submit or not to submit a Bid; that this Bid has been independently arrived at without collusion with any other bidder, competitor, or potential competitor; that this Bid has not been knowingly disclosed prior to the Bids Due Date to another bidder or competitor; that the above statement is accurate under penalty of perjury.

The undersigned further agrees to honor the Base Bid and the Alternate Bid(s) for sixty (60) calendar days from date of Award of Contract.

SIGNATURE: _____
(Bid is invalid without signature)

Print Name: _____ Date: _____

Title: _____

Address: _____

Telephone No.: _____ Fax No.: _____

Email Address: _____

Contact Person: _____

THIS PAGE IS FOR BIDDERS' REFERENCE AND NEED NOT BE SUBMITTED WITH BID FORM.

BID CHECK LIST:

These items **must** be included with Bid:

- Bid Form Bid Bond Fair Labor Practices Certification
 Project Experience / Reference Summary - List of 3 with References (on separate sheet)

BIDDERS SHOULD BE AWARE OF THE FOLLOWING:

DANE COUNTY VENDOR REGISTRATION PROGRAM

Any person bidding on any County contract must be registered with the Dane County Purchasing Division & pay an annual registration fee. A contract will not be awarded to an unregistered vendor. Obtain a *Vendor Registration Form* by calling 608/266-4131 or complete a new form or renewal online at:
www.danepurchasing.com/registration

DANE COUNTY BEST VALUE CONTRACTING PRE-QUALIFICATION

Contractors must be pre-qualified as a Best Value Contractor with the Dane County Public Works Engineering Division before the award of contract. Obtain a *Best Value Contracting Application* by calling 608/266-4018 or complete one online at:
www.countyofdane.com/pwht/BVC_Application.aspx

EQUAL BENEFITS REQUIREMENT

By submitting a Bid, the contractor acknowledges that a condition of this contract is to provide equal benefits as required by Dane County Code of Ordinances Chapter 25.016. Contractor shall provide equal benefits as required by that Ordinance to all required employees during the term of the contract. Equal Benefits Compliance Payment Certification shall be submitted with final pay request. For more information:
www.danepurchasing.com/partner_benefit.aspx

SECTION 05 31 20

CORRUGATED ROOF DECKING

PART 1 - GENERAL

1.01 SUMMARY

- A. This Section includes the following:
 - 1. Roof deck.

1.02 SYSTEM DESCRIPTION

- A. Performance Requirements: Provide factory formed, prefinished, lappable, exposed fastener, structural ribbed metal roof system, that has been pretested and certified by manufacturer to comply with specified requirements under installed conditions
 - 1. The metal roofing system including required trim members shall meet specified requirements for snow and wind loads
 - 2. The panel will have 7/8" high ribs at +/- 2 3/4" o.c.
- B. Structural Requirements: Engineer panels for structural properties in accordance with the latest edition of American Iron and Steel Institute's Cold Formed Steel Design Manual using "effective width" concept.

1.03 SUBMITTALS

- A. Product Data: For each type of deck, accessory, and product indicated.
- B. Shop Drawings: Show layout and types of deck panels, anchorage details, reinforcing channels, pans, cut deck openings, special jointing, accessories, and attachments to other construction.
- C. Submit sample 12" long x full panel, showing proposed metal gauge, seam profile and specified finish
- D. Field quality-control test and inspection reports.

1.04 QUALITY ASSURANCE

- A. Panel manufacturer shall have a minimum of ten (10) years of experience in manufacturing exposed fastener roofing systems.

1.05 DELIVERY, STORAGE, AND HANDLING

- A. Protect steel deck from corrosion, deformation, and other damage during delivery, storage, and handling.
- B. Stack steel deck on platforms or pallets and slope to provide drainage. Protect with a waterproof covering and ventilate to avoid condensation.

1.06 WARRANTIES

- A. Panel manufacturer shall provide a twenty (20) year warranty on the finish covering for chalking, cracking, checking, chipping, blistering, peeling, flacking, and fading.
- B. Applicator shall furnish written warranty for a two (2) year period from Substantial Completion covering repairs required to maintain roof and flashings in watertight conditions.

PART 2 - PRODUCTS

- 1 2.01 PRODUCT DESCRIPTION
2
3 A. Galvanized 7/8" Corrugated structural exposed fastener roof system.
4
5 B. Rib height shall be 7/8" corrugated panels.
6
7 C. Panels shall be directly fastened to substrate.
8
9 D. The panel shall have a overlapping sidelap feature.
10
11 2.02 ROOF DECK
12
13 A. Panel Materials:
14 1. 22 gauge Grade 50 (50 ksi yield strength) structural steel with G90 hot dipped galvanized coating,
15 both conforming to ASTM A653.
16 2. Texture: Panels shall be smooth finish
17
18 2.03 ACCESSORIES
19
20 A. Flashing and Trim
21 1. All flashing and trim shall be of the same material, gauge, finish, and color as the roof panels.
22
23 B. Mechanical Fasteners:
24 1. All screws shall be plated steel corrosion-resistant. They shall have a combination steel and
25 EPDN washer.
26 2. Screws for sidelaps and flashings shall be #14 HHA x 3/4" sheet metal stitch screws. Spacing shall
27 be 12" o.c. unless noted otherwise on drawings.
28
29 C. Sealant shall be a non-shrinking, non-hardening gun grade butyl sealant or butyl sealant tape with a min-
30 imum thickness of 1/" where it is concealed and where thermal movement must be accommodated.
31
32 D. Closures shall be pre-molded polyethylene to match the profile of the corrugated panel.
33
34 2.04 FABRICATION
35
36 A. Panels are lappable: Individual steel roof panels shall be one piece and run from eave to ridge.
37
38 PART 3 - EXECUTION
39
40 3.01 INSTALLATION
41
42 A. All deck panels shall be a minimum two-span condition unless approved by the structural engineer.
43
44 B. Comply with manufacturer's installation procedures and guidelines.
45
46 C. Place deck panels on supporting frame and adjust to final position with ends accurately aligned and bear-
47 ing on supporting frame before being permanently fastened. Do not stretch or contract side-lap.
48
49 D. Place deck panels flat and square and fasten to supporting frame without warp or deflection.
50
51 E. Cut and neatly fit deck panels and accessories around openings and other work projecting through or ad-
52 jacent to deck.
53
54 F. Provide additional reinforcement and closure pieces at openings as required for strength, continuity of
55 deck, and support of other work.
56
57 G. Abrasive devices shall not be used to cut on or near roof panel system.

- 1
- 2 H. Apply sealant tape or sealant as necessary at flashing and panel joints to prevent water penetration.
- 3
- 4 3.02 CLEANING
- 5
- 6 A. Dispose of excess materials and debris from job site
- 7
- 8 B. Remove filings, grease, stains, marks, or excess sealants from roof panel system.
- 9
- 10 C. Protect work from damage from other trades until final acceptance.
- 11
- 12
- 13

END OF SECTION 05 31 20

SECTION 12 21 13

HORIZONTAL LOUVER BLINDS

PART 1:GENERAL

1.01 DESCRIPTION

- A. Conditions of the Contract and portions of Division One of this Project Manual apply to this Section as though repeated herein.

1.02 WORK INCLUDED

- A. Horizontal Louver Mini Blinds.

1.03 SUBMITTALS

- A. Make the following submittals in accordance with the General Conditions of the Contract.
 - 1. Product Data: Indicate model, finishes, mounting instructions.
 - 2. Samples: Two 12-inch pieces of slats, fabrics, or other finished material, indicating full range of color.
 - 3. Shop Drawings: Indicate dimensions of openings scheduled to receive blinds, based on field measurements, illustrations of special components not detailed on manufacturer's data sheets, details of divisions between adjacent units, abutments at corners, head and sill.

1.04 DELIVERY, STORAGE AND HANDLING

- A. Deliver and store blinds in original packaging to area to protect from damage.
- B. Handle so as to prevent damage or soiling.

PART 2:PRODUCTS

2.01 MANUFACTURERS

- A. Bali CustoMiser Aluminum Custom Mini Blind.
- B. Levalor Monaco.
- C. Kirsch Mini.
- D. Or approved equal.

2.02 FEATURES

- A. Bottom Rail: Steel, standard top surface contoured to match slat, reinforced to prevent twisting or sagging, with plastic end caps.
- B. Ladder: Standard braided polyester.
- C. Tilter: Standard enclosed lubricated mechanism with 180 degree tilt range, designed to hold slats at set angle.
 - 1. Worm, gear drive actuated by nondetachable rod. Full length rod, top only locking.
- D. Equalizers: Self-aligning, nylon, designed to maintain slats in horizontal position.
- E. Color: Architect will choose from full range of standard colors.

1 F. Size blinds to overlap window/wall jambs 1 inch.

2
3 PART 3:EXECUTION

4
5 3.01INSPECTION

6
7 A. Check that surfaces to which work will be secured are sound and free of irregularities interfering with
8 installation.

9
10 B. Do not begin installation until unsatisfactory conditions have been corrected.

11
12 3.02INSTALLATION

13
14 A. Install blinds in accordance with manufacturer's installation procedures, approved Shop Drawings.

15
16 B. Assure adequate clearance to permit unencumbered operation.

17
18 C. Replace damaged items with new material.

19
20 D. Repair surfaces damaged by improper installation.

21
22 3.03 SCHEDULE OF OPENINGS

23
24 A. Interior openings:

25 a. Openings 220e and 220d, OXXO, rough opening height approx. 10'-2", approx. width 14'-0" per
26 opening. See 08 41 13.

27 b. Sidelites at Meeting 107A, Office 125, both openings.

28 c. Sidelites at Offices 201, 202, 203, 207, 208, 209, 210. See plan for width, door schedule and frame
29 elevations on A700.

30
31
32 END OF SECTION 12 21 13

SECTION 12 24 13

ROLLER WINDOW SHADES

PART 1 - GENERAL

1.01 RELATED DOCUMENTS

- A. Conditions of the Contract and portions of Division One of this Project Manual apply to this Section as though repeated herein.

1.02 WORK INCLUDED

- A. Manually operated sunscreen roller shades on all exterior windows within the project scope.

1.03 RELATED WORK

- A. Rough Carpentry, Section 06 10 00: blocking for support of window shade brackets.
- B. Substrate for window shade systems and installation of accessories supplied only under this section.

1.04 QUALITY ASSURANCE

- A. Manufacturer shall have 15 years experience in the manufacture of products comparable with those specified in this section.
- B. Manufacturer shall provide all shading components and electrical components for a complete installation and a single source of shading and lighting control where applicable.
- C. The manufacturer or licensed agent shall be approved to provide the products specified, honor all claims against the product in accordance with the warranty.
- D. Manufacturer shall provide 24/7 technical support to aid in troubleshooting system wiring and assist in system programming.
- E. Installer shall be qualified for installation by experience and be approved by the manufacturer.

1.05 SUBMITTALS

- A. Submit manufacturer's descriptive literature for each product type specified. Details shall indicate materials, finishes, construction, and mounting requirements. Also include installation and operating instructions.

1.06 SHOP DRAWINGS

- A. Indicate Head, jamb, and sill details to aid General Contractor to coordinate work as well as relevant dimensions and mounting requirements for each product type and mounting condition.
- B. Provide shade schedule coordinating room number, opening size(s), quantities and key to details.
- C. Submit a proposed seaming diagram for Architect approval at any openings where seams are required. Utilize manufacturer's maximum fabric dimension to minimize seams.

1.07 SAMPLES

- 1 A. Portfolio of shade fabric swatches for initial fabric color selection from manufacturer's full range of
2 available fabrics. Provide sample and profiles of all aluminum fascias for selection from
3 manufacturer's full range of available fascias.
4
- 5 B. Material samples for color and finish selection of controls.
6
- 7 C. One fully operational window shade sample of each type required complete with selected shade fabric
8 including sample of seam/batten when applicable. Location of sample to be determined by Architect.
9
- 10 D. One complete set of all shade components demonstrating compliance.
11
- 12 1.08 CERTIFICATION
13
- 14 A. Test Reports indicating compliance with Fabric test properties listed in Section 2.
15
- 16 1.09 MANUFACTURER'S INSTRUCTION
17
- 18 A. Installation, Programming, and Maintenance instructions to be included in product packaging.
19
- 20 B. 24-Hour / 7-Day Technical support shall be available to aid with unforeseen installation difficulties.
21
- 21 1.10 DELIVERY, STORAGE, AND HANDLING
22
- 22 A. Storage and Protection
23
- 23 1. Do not deliver items to the project until all concrete, masonry, plaster, painting and other wet
24 work has been completed and is dry.
25
- 25 2. Deliver shades to project in protective packaging, uniquely labeled to identify each shade for each
26 opening. Schedule delivery to prevent delays to completion of work, but to minimize on-site
27 storage time.
28
- 28 3. Store materials in a dry, secure place. Protect from weather, surface contaminants, corrosion,
29 construction traffic, and all other potential damage.
30
- 30 B. PROJECT / SITE CONDITIONS
31
- 31 1. Shade system shall not be installed until the building is operating in ambient temperature and
32 humidity ranges consistent with that intended for buildings ultimate use.
33
- 33 C. SCHEDULING
34
- 34 1. Do not fabricate shades without obtaining field dimensions for each opening.
35
- 35 2. Coordinate construction of surrounding conditions to allow for timely field dimension verification.
36
- 36 3. Manufacturer's standard lead times apply. Reference submittal and schedule accordingly for
37 project timeline.
38
- 38 D. EXTRA MATERIALS
39
- 39 1. The manufacturer shall make available to the end user a method of ordering new equipment for
40 expansions, replacement, or parts to be used as spares twenty-four hours a day, seven days a week.
41
- 41 2. The manufacturer must make available new or remanufactured parts for a minimum period of ten
42 years from the final date of commissioning.
43
- 43 PART 2 - PRODUCTS
44
- 44 1.01 MANUFACTURERS
45
- 45 A. To establish the standard of quality, design, and function desired, drawings and specifications are

- 1 based on the Manual Solar Shades by:
- 2 1. Springs Window Fashions, SWFcontract.
- 3 2. Or approved equal by MechoShade Systems, Inc., Hunter Douglas, or approved equal.
- 4 3. Dealer contact information: Interiors by J&L, Janice Quinton, 608.592.4221 or other approved
- 5 dealer.

6 1.02 GENERAL SYSTEM SPECIFICATIONS

7 A. OPERATION

- 8 1. Manual.

9 1.03 ROLLER SHADES

10 A. MOUNTING

- 11 1. Roller shade brackets shall allow for symmetrical light gaps as small as 3/4" on each side of
- 12 shade.
- 13 2. System shall have a roller shade leveling adjustment that allows level adjustment while the
- 14 roller shades are mounted to the brackets.
- 15 3. System shall allow a side-to-side adjustment of up to ±3/8" on each side while the shade is
- 16 mounted to the bracket to properly center shade over the window.
- 17 4. System shall have a projection adjustment of up to 1/2" allowing the shade to clear the trim or
- 18 move the shade closer to the window in order to have a tighter seal between the fabric and the
- 19 window.
- 20 5. System dual brackets shall be provided to permit two shades rollers to be mounted in the same
- 21 opening .

22 B. SHADE TUBE

- 23 1. 2.5" aluminium extrusion
- 24 2. Fabric shall be connected to the tube with double-sided adhesive strip applied for exact and firm
- 25 mounting of the fabric and for easy adjustment of fabric to prevent telescoping.
- 26 3. A minimum of one turn of fabric will be placed on the roller before the working section of
- 27 fabric starts, to protect the fabric and smooth out the starting seam.

28 C. FABRICS

- 29 1. Qualifications
- 30 a. Fire – Provide shade fabrics tested in accordance with:
- 31 i. 1989 NFPA 701 small scale Vertical Burn Test and rated "PASS."
- 32 ii. 1996 NFPA 701 small scale Vertical Burn (telephone booth test) and rated "PASS."

33 E. MANUFACTURING

- 34 1. Where applicable, shade fabric will be ultrasonically cut and friction sealed to minimize fraying.
- 35 2. Woven yarn fabrics will be interlocking and heat-treated so that all material is securely bonded.
- 36 3. Shade Fabric panels shall be 100% visually inspected for defects using a light box integrated
- 37 into the manufacturing line.
- 38 4. 100% visual inspections shall be performed on each shade seam and hem bar welds and
- 39 compared to strict aesthetic standards.

- 1 5. Shade seam weld strength process shall be tested on a daily basis to ensure controlled
- 2 consistency of weld quality.
- 3 6. Shade panels shall be 100% checked for squareness ($\pm 1/16''$)
- 4 7. Shade panels shall be 100% visually inspected to ensure there are no frayed edges or defects in
- 5 the cut.

6 F. LIGHT FILTERING FABRICS

- 7 1. Equal to Phifer Shearweave 2410, Greenguard Certified.
- 8 a. Openness factor to be selected by architect from manufacturer's full range.
- 9 b. Color to be selected by architect from manufacturer's full range.

10 G. FASCIA

- 11 1. To be selected from manufacturer's full range.

12 H. HEM BAR

- 13 1. Standard Sealed Hem Bar shall be a 1" wide by .1875" thick extruded aluminum bar enclosed on
- 14 all sides in a thermally sealed pocket across the bottom of the shading fabric.

15 PART 3 - EXECUTION

16 3.01 EXAMINATION

- 17 A. Refuse delivery of any damaged packaging.
- 18 B. Ensure all parts match specified bill of materials and purchase order.

19 3.02 INSTALLATION

- 20 A. Install shades in windows level and plumb to provide smooth operation.
- 21 B. Install in accordance with manufacturer's product data and approved shop drawings
- 22 C. Field measurement and installation shall be performed by a factory-trained technician.

23 3.03 FIELD QUALITY CONTROL

- 24 A. Site test/Inspection
- 25 1. Examine substrate and conditions for installation. Do not commence installation until conditions
- 26 are satisfactory. Commencement of installation indicates acceptance of site conditions by
- 27 Contractor. Notify the Design Professional upon inspection when the project conditions are
- 28 unacceptable for shade installation. "Beginning of installation" means acceptance of substrate and
- 29 project conditions.
- 30
- 31

32 3.04 ADJUSTING

- 33 A. Adjust fabric on tube to prevent telescoping of fabric over time.

34 3.05 CLEANING

- 35 A. Touch up damaged finishes and repair minor damage in order to eliminate evidence of repair. Remove
- 36 and replace work that cannot be satisfactorily repaired.
- 37 1. Clean exposed surfaces, including metal and shade fabric, using non-abrasive materials and
- 38 methods recommended by the Shade Fabric Manufacturer. Remove and replace work that cannot
- 39 be satisfactorily cleaned.

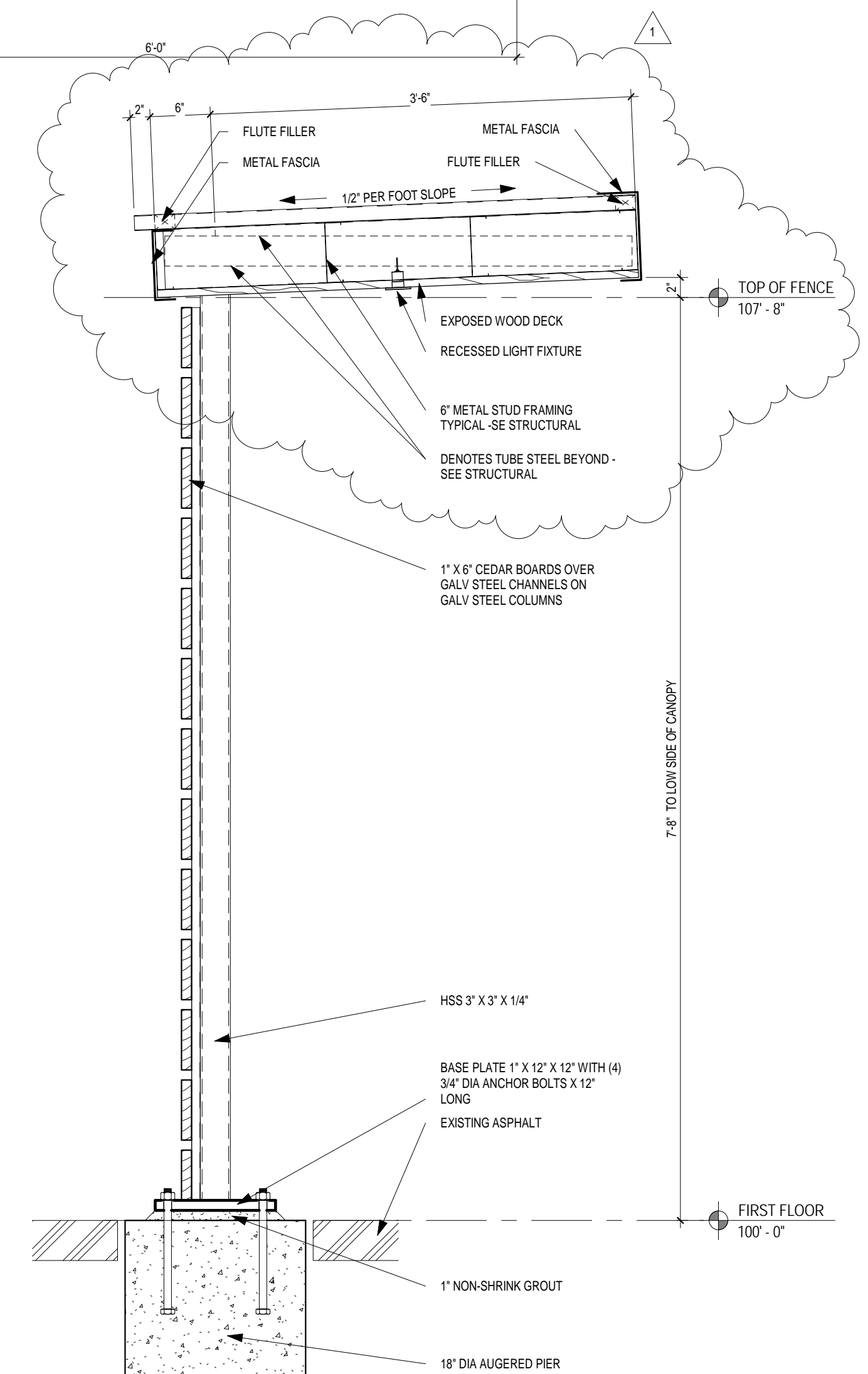
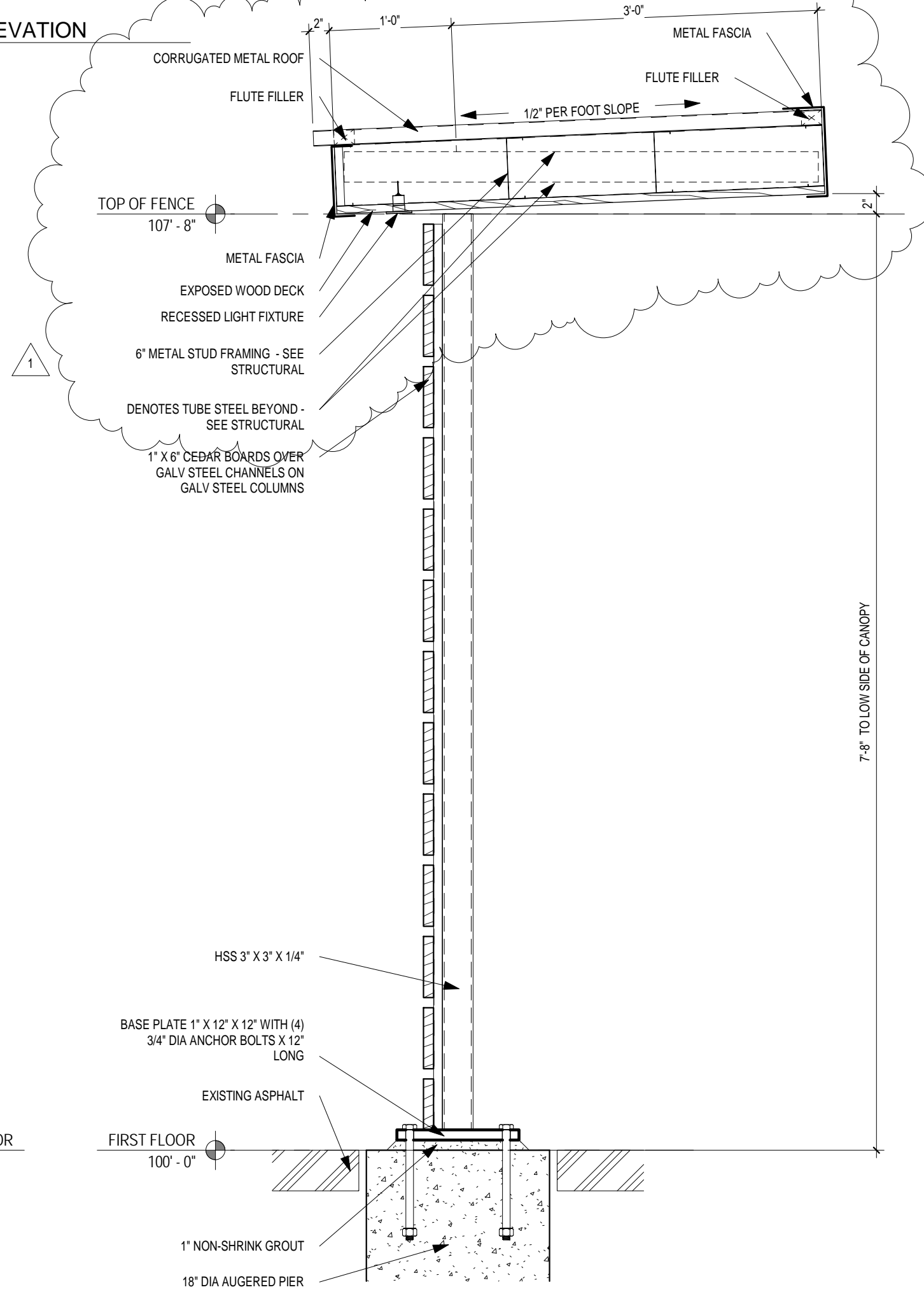
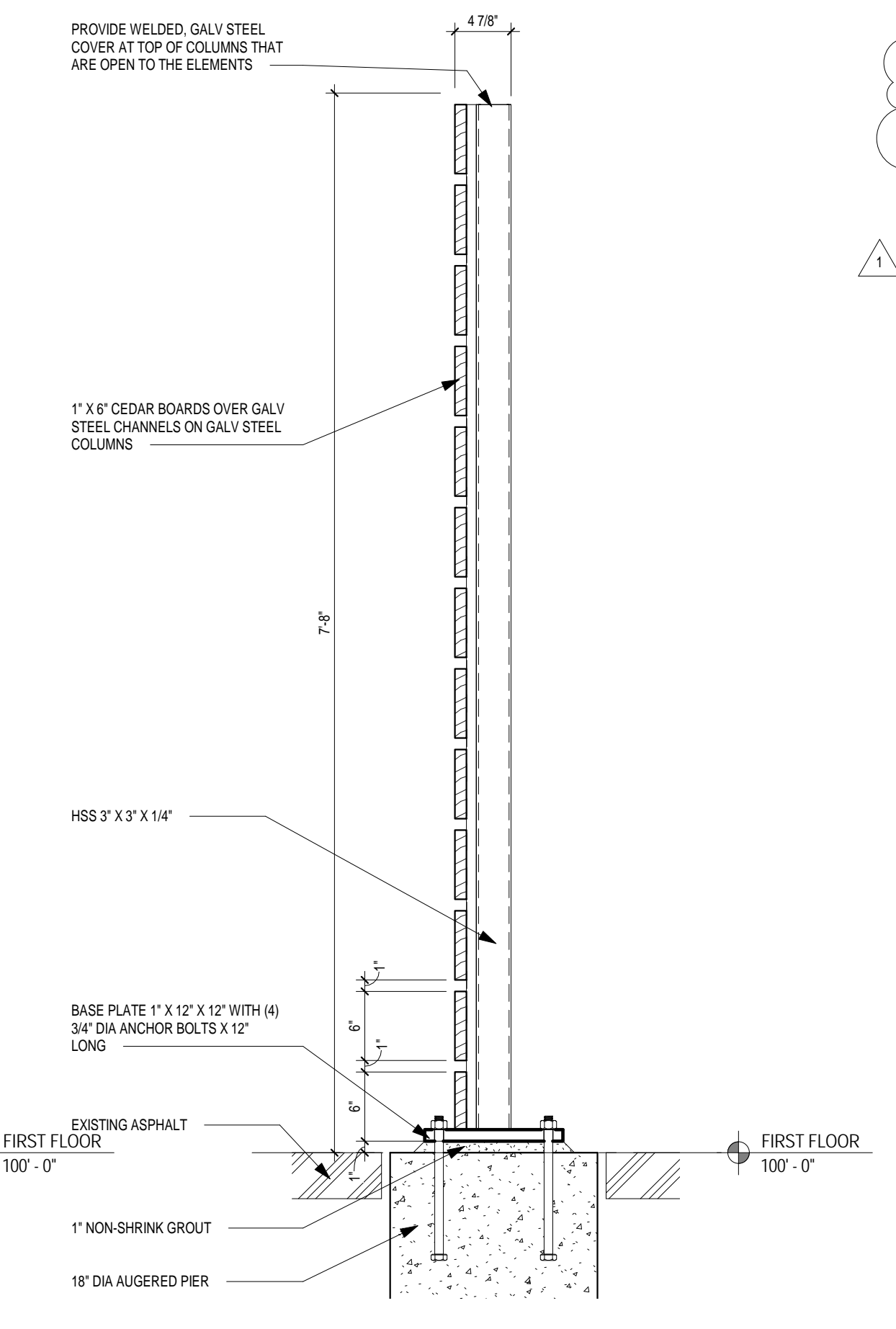
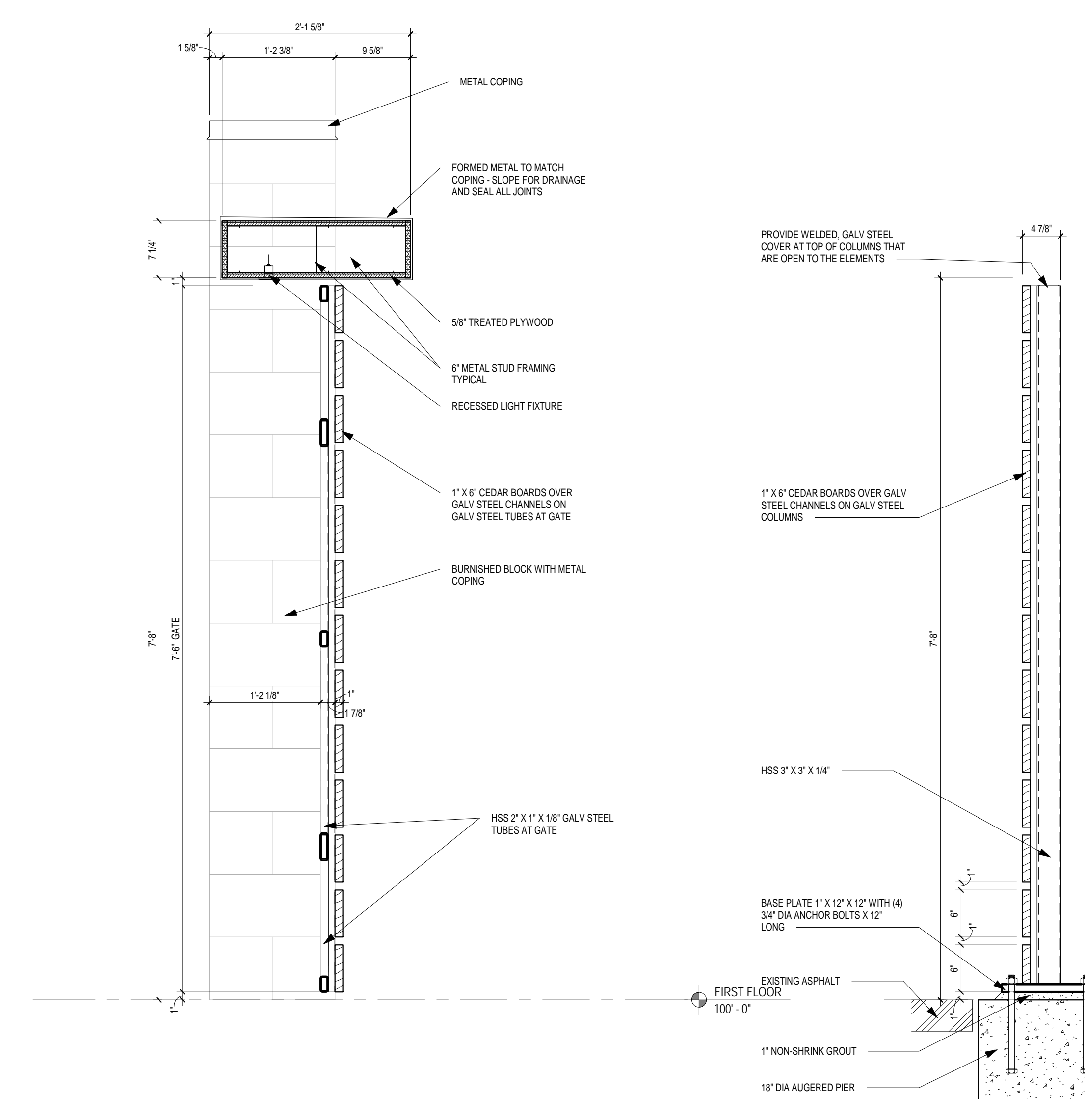
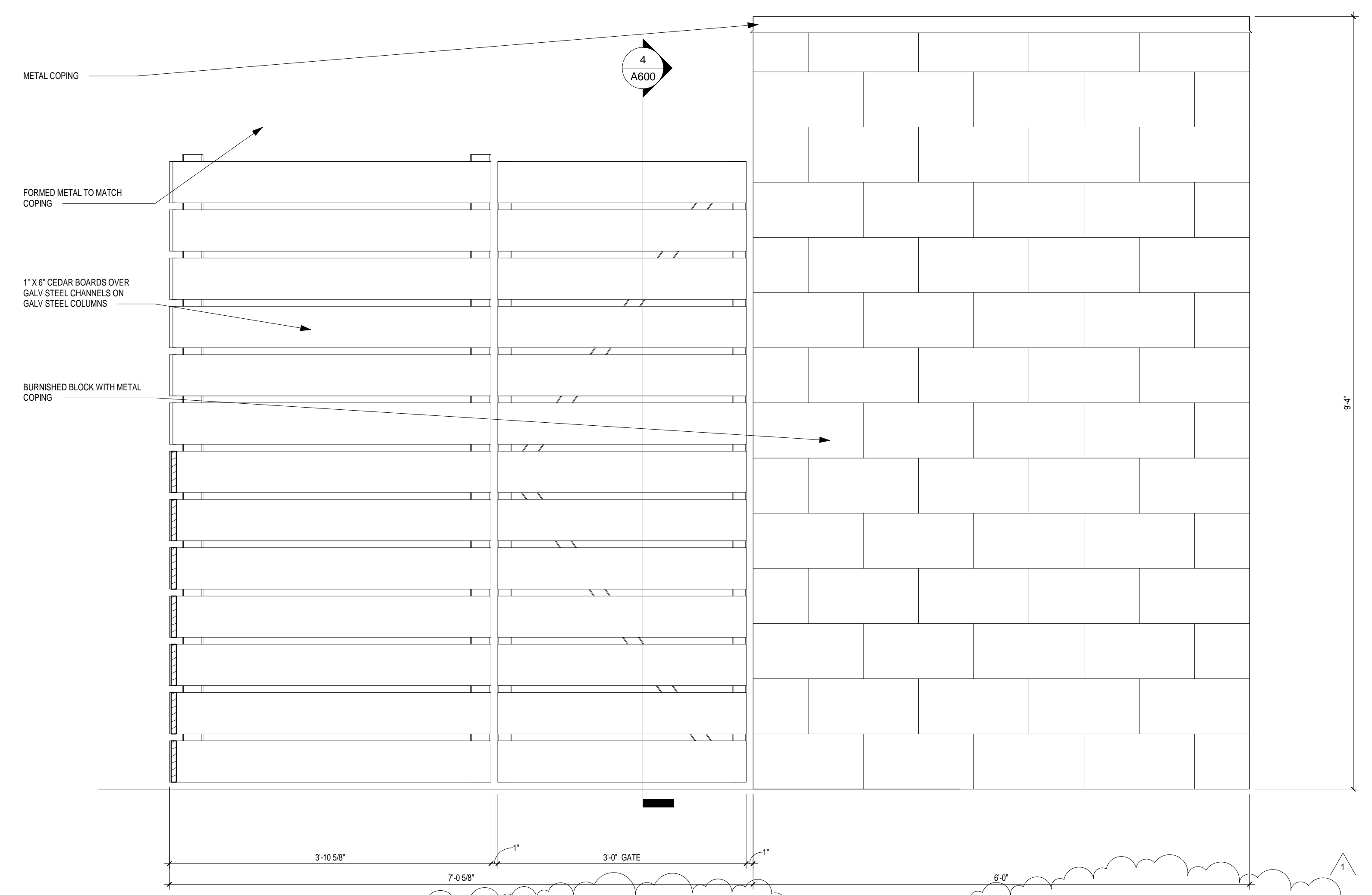
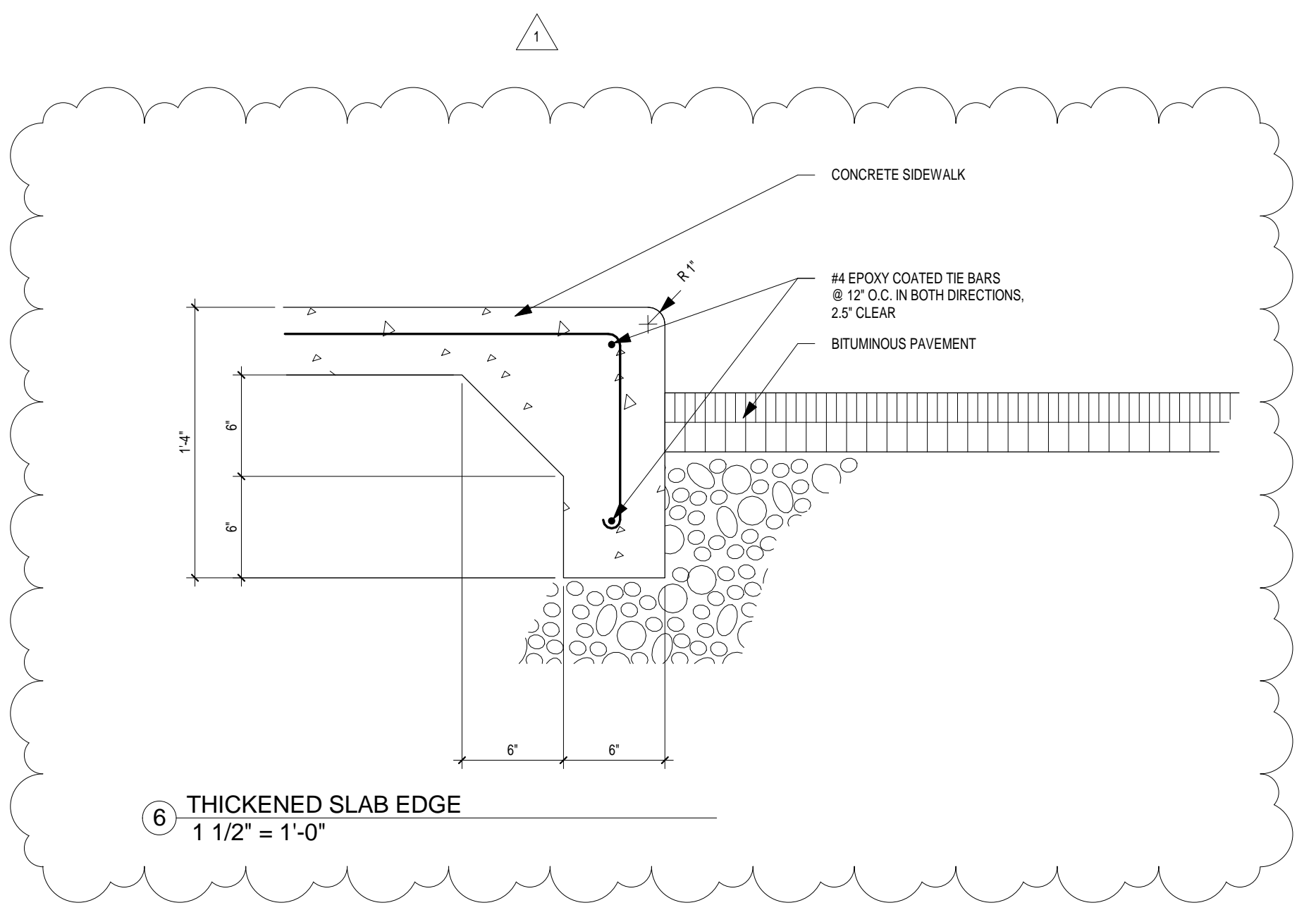
1 3.06 DEMONSTRATION

2 A. Demonstrate operation method and instruct Owner's personnel in the proper operation and maintenance of
3 the window shade systems.

4 3.07 SCHEDULE OF OPENINGS

5 A. Exterior Openings are approximately 4'-0" high rough openings. Multi-Purpose 124, Conference
6 200, Office 201, 202, 203, Kitchenette 204, Office 210, Multi-Purpose 217. See plan for
7 configuration, field verify spandrel panel locations in second floor East Washington facing openings.
8

9 END OF SECTION 12 24 13
10



4 FENCE SECTION
1" = 1'-0"

3 FENCE SECTION
1" = 1'-0"

2 FENCE SECTION
1" = 1'-0"

1 FENCE SECTION
1" = 1'-0"

Architecture
Planning

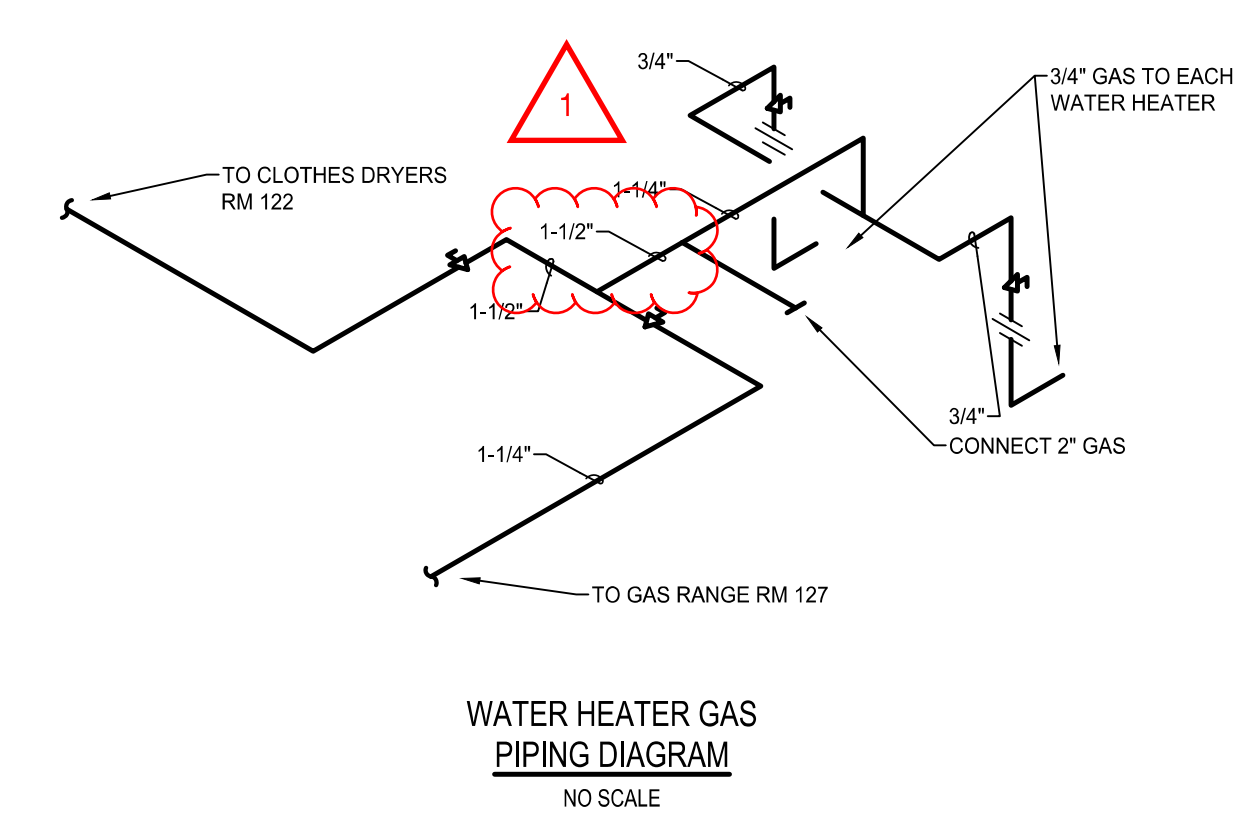
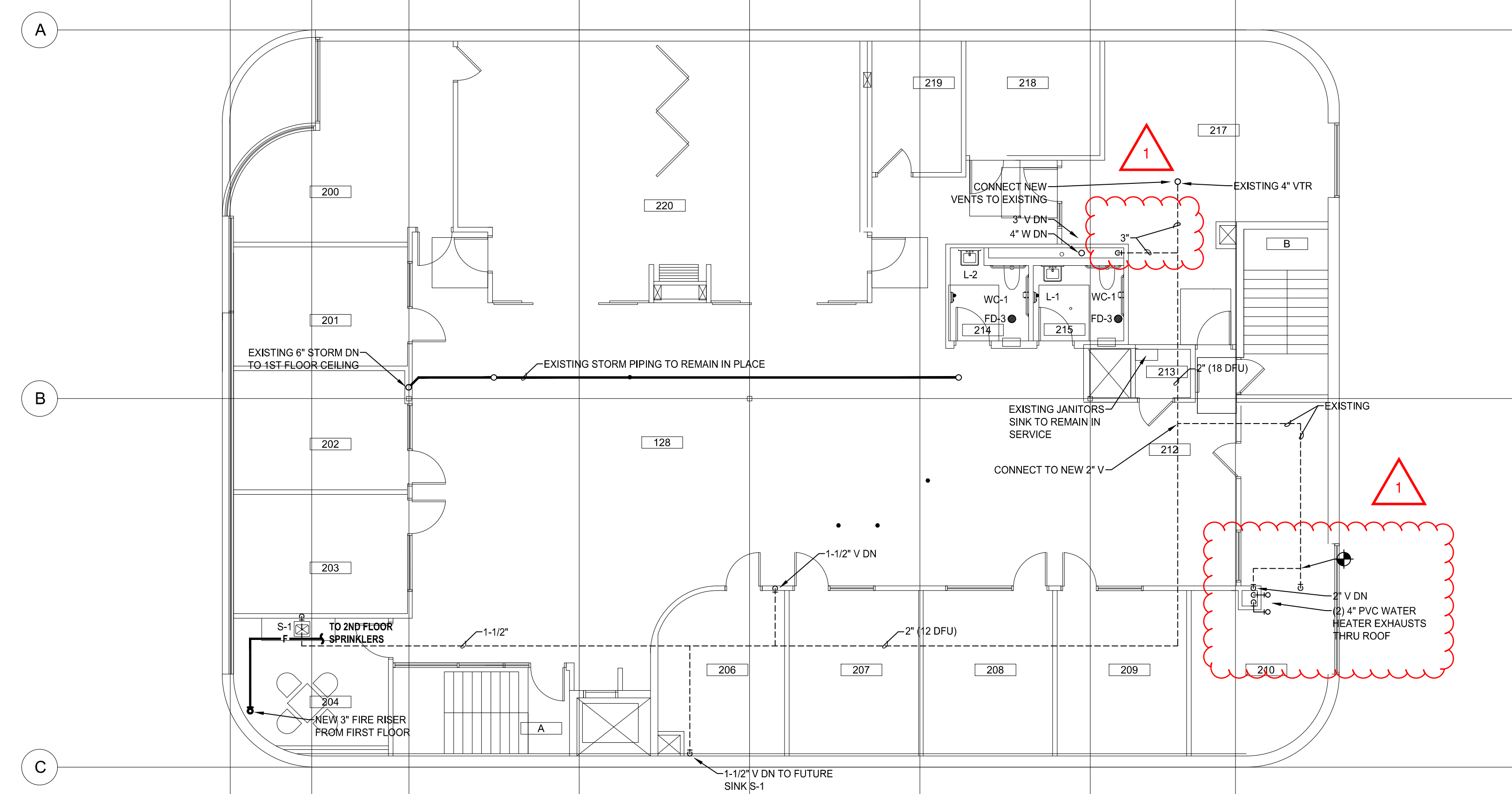
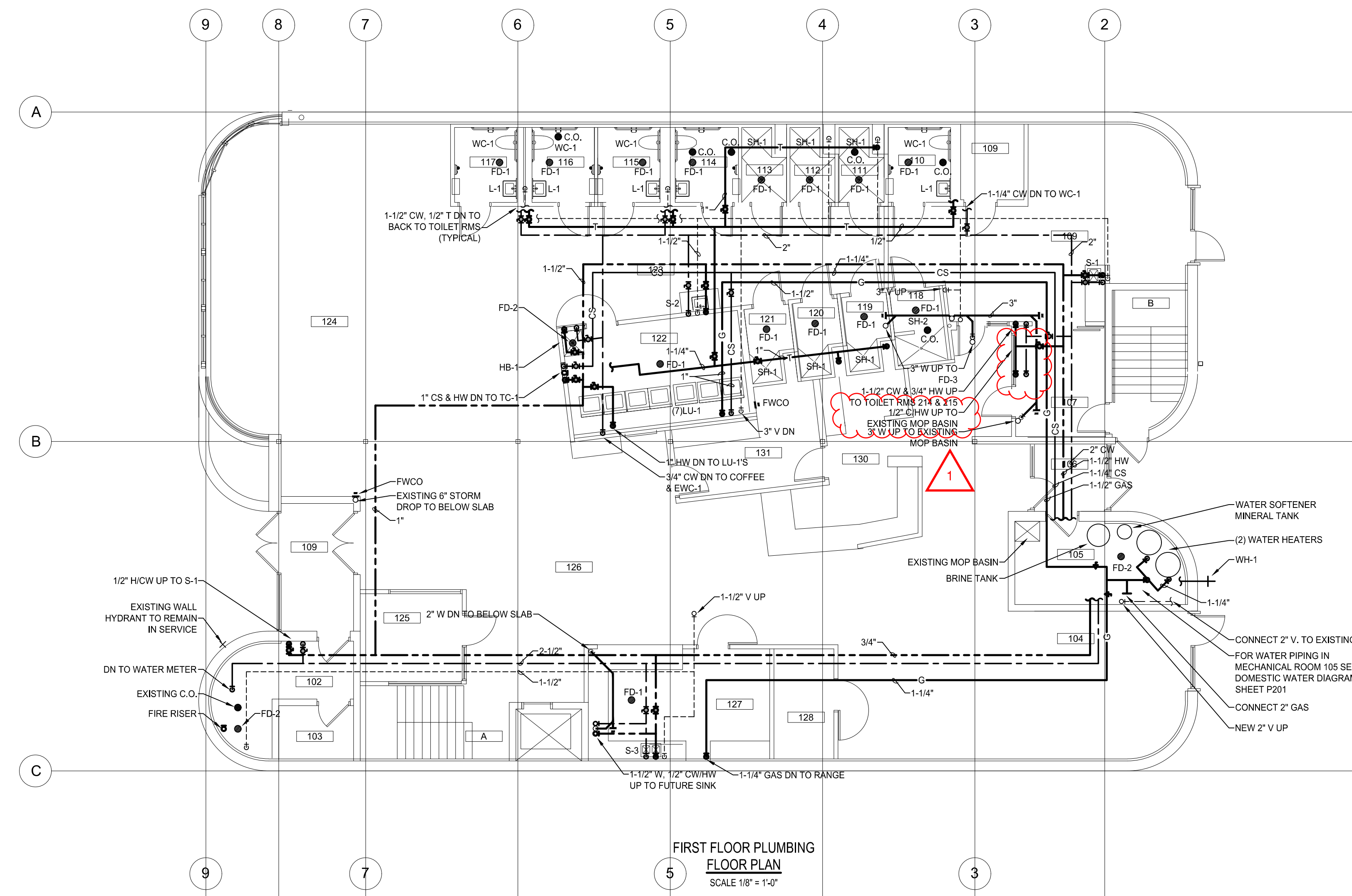
Dorschner Associates, Inc.
849 E. Washington Ave., Ste 112
Madison, Wisconsin 53703

SPD
SELECT PLUMBING DESIGN, LLC

4564 EVERGREEN RD (608) 836-9674
MIDDLETON, WI. 53562

ISSUED

Addendum No. 1 03.21.17



PROJECT
DANE COUNTY
DAY RESOURCE CENTER
615 E WASHINGTON AVE
MADISON WISCONSIN

DRAWING
FIRST AND SECOND FLOOR
PLUMBING PLANS

DATE
03.09.17

Architecture
Planning

DorschnerAssociates, Inc.
849 E. Washington Ave., Ste 112
Madison, Wisconsin 53703

SPD
SELECT PLUMBING DESIGN, LLC

4564 EVERGREEN RD (608) 836-9674
MIDDLETON, WI. 53562

ISSUED

Addendum No. 1 03.21.17

PROJECT

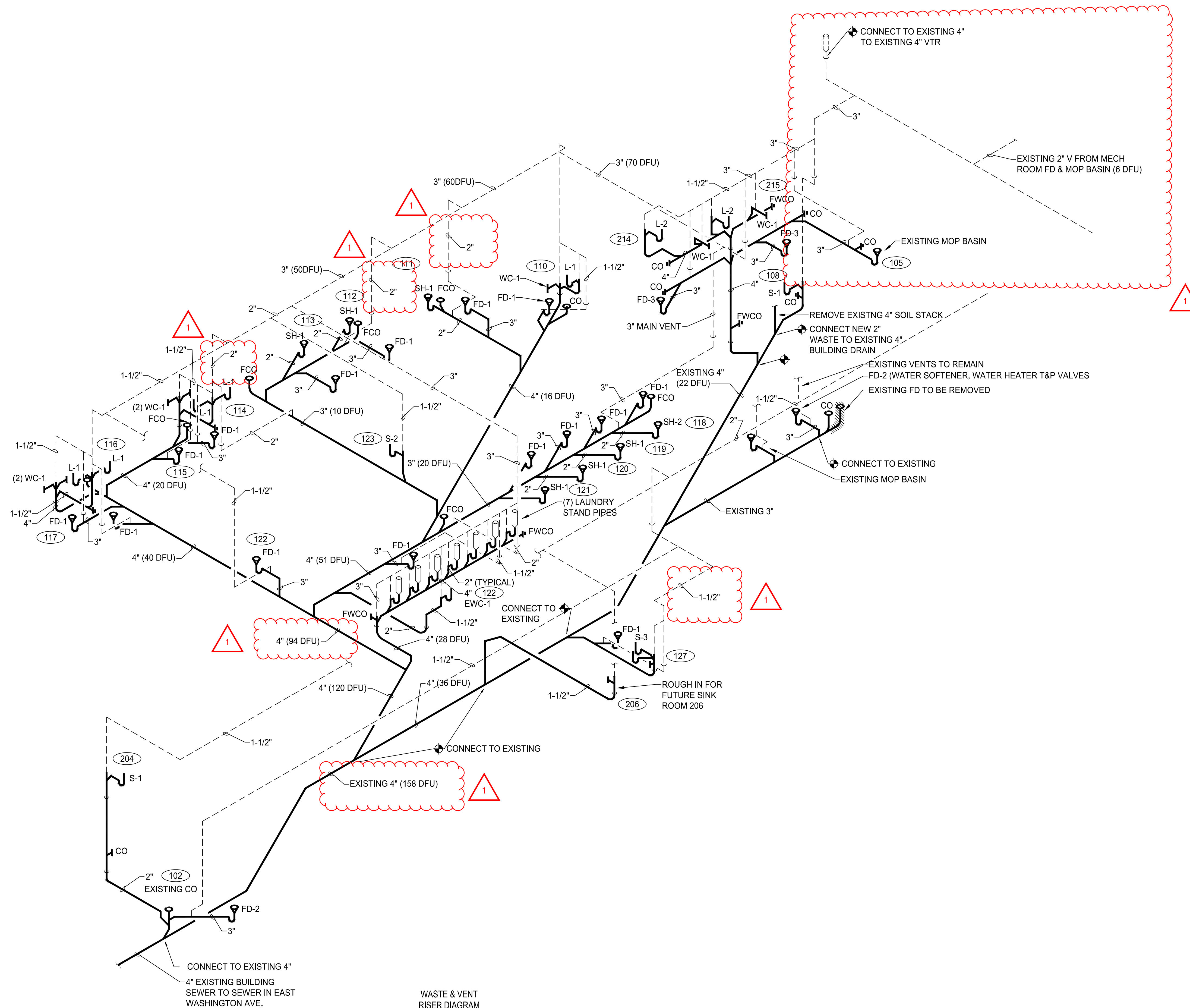
DANE COUNTY
DAY RESOURCE CENTER
615 E WASHINGTON AVE
MADISON WISCONSIN

DRAWING

WASTE & VENT DIAGRAM

DATE

03.09.17



WASTE & VENT
RISER DIAGRAM
NO SCALE

DANE COUNTY
 Department of Public Works,
 Highway & Transportation
 PRE-BID SITE TOUR

Day Resource Center Remodeling Bid #317012
 03/20/17

Name	Company	Phone No.	E-mail address
AARON EUSTICE	AHERN	608-219-0480	A.EUSTICE@JFAHEKN.COM
Brad Love	Sterling Commercial Roofing	815626-7744	BLove@sterlingroofing.com
MARK BEUSBERG	MIRON CONSTRUCTION	608-203-2757	MARK.BEUSBERG@MIRON-CONSTRUCTION.COM
Troy Harrison	Hill Electric	608-256-2983	troy@hillelectrinc.com
Aaron Romburg	Hill Electric Inc	608-250-2983	aromburg@hillelectrinc.com
DON HAMMER	Sweet Rumpour Design	836-9674	doham1@tds.net
SAM DANIELS	DANIELS CONSTRUCTION	271-4800	SDANIELS@DANIELS.CO.COM
Mark Perno	J.H. Findorff	442-7341	mperno@findorff.com
Bill Kirchstein	Maly Roofing	249-7663	temyt@malyroofing.com
Casey Becker	Dave Co. Human Services	242-7511	becker.casey@countyofdave.com

DANE COUNTY Department of Public Works, Highway & Transportation PRE-BID SITE TOUR

Day Resource Center Remodeling Bid #317012
03/20/17

Name	Company	Phone No.	E-mail address
LUCAS KRAMER	QUALITY ROOFING INC	715 384 8881	lucas@qroof.com
Ed Enck	Bretman Construction	608 222 8869	enck@bretmanconstruction.net
Vince Lautenberg	McTree Associates	608 -271-4990	Vince@mcTreeAssociates.com
BEN SMITH	OMNI TECHNOLOGIES LLC	608 - 819 - 1980	Bsmith@omnitechologiesllc.com
Mike Barnett	Sustainable Engineering	608-836-4488	mbarnett@sustainableeng.com