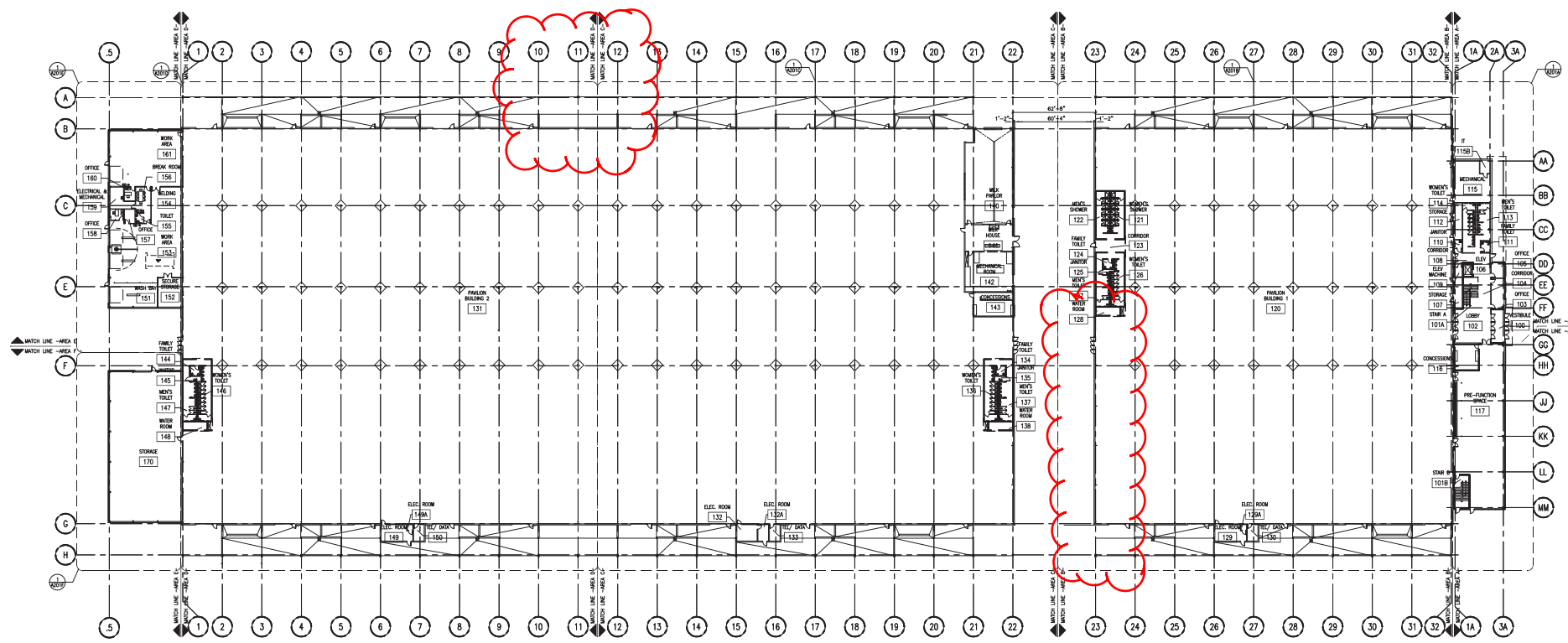


Pavilion #2 Wash Rack

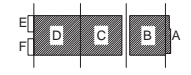


N
1
A201
FIRST FLOOR REFERENCE PLAN
SCALE: 1/32" = 1'-0"

Pavilion #1 Wash Rack

DRAWING SET	CD
COPYRIGHT	2013
STRANG, INC.	
FILE NAME	2013027_00-A201-DWG
REVISIONS	CONST. SET 01-08-14
DRAWN	JB
CHECKED	RG
DATE	10-29-13
PROJECT NO.	2013027_02
PROJECT TITLE	
ALLIANT ENERGY CENTER PAVILIONS	
BID # 313072	

1919 ALLIANT ENERGY CENTER WAY
MADISON, WISCONSIN 53713







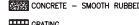


N
KEY PLAN

SHEET TITLE
FIRST FLOOR REFERENCE PLAN

SHEET NO.
A201

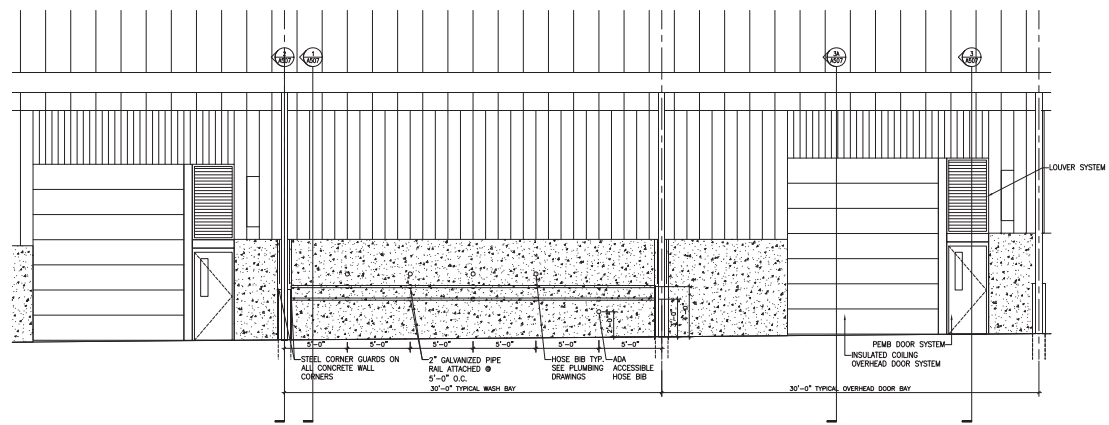
ADMIN/MAILING 3/28/14 9:27 AM FAX: 313072027 - ALLIANT ENERGY CENTER - LBS03013007_02_A201 - US MAIL/WORKSPACE/2013027_02/001.DWG

MATERIAL KEY

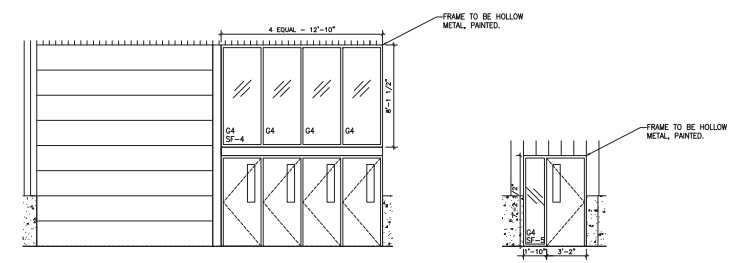
-  RIBBED METAL PANEL (PAL-1)
-  RIBBED METAL PANEL (PAL-2)
-  STANDING SEAM ROOF PANEL
-  STONE VENEER PANEL (STONE-1)
-  VISION GLASS-G1, UNO
-  CONCRETE - SMOOTH RUBBED FINISH
-  GRATING

ARCHITECTURE
ENGINEERING
INTERIOR DESIGN

STRANG, INC.
 8425 WISCONSIN ROAD
 MADISON, WI 53718-4899
 T: 608 278 8800
 F: 608 278 8804

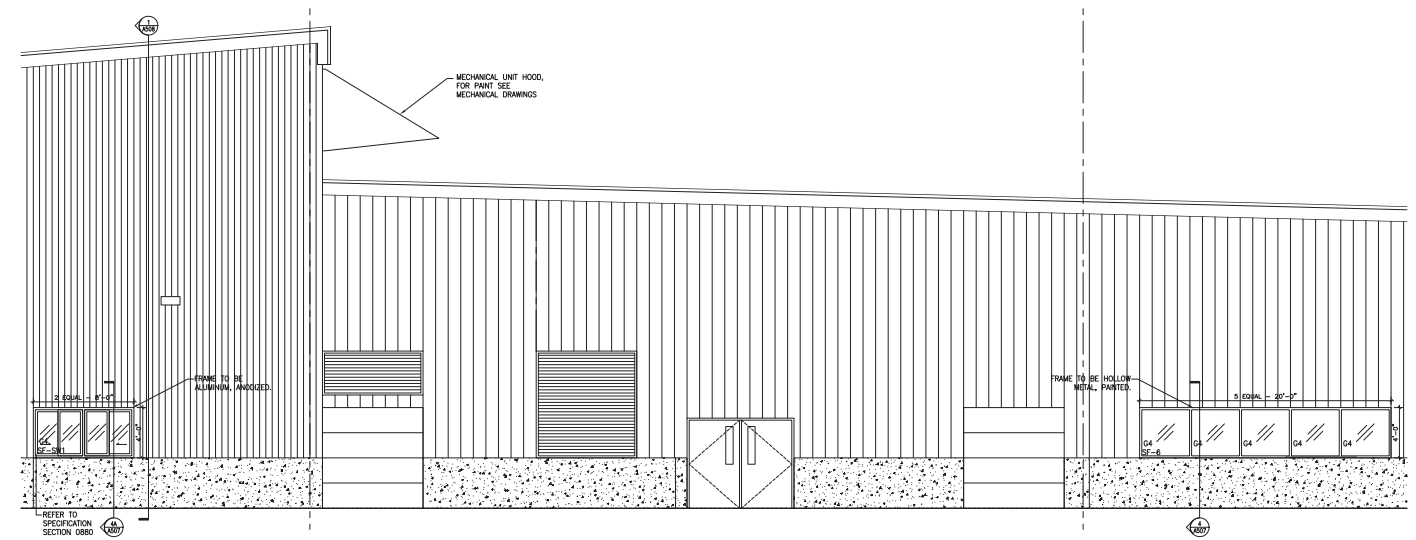


3
 A411B
 TYPICAL BAY
 ENLARGED ELEVATION
 SCALE: 1/4" = 1'-0"



2
 A411B
 TYPICAL END BAY
 ENLARGED ELEVATION
 SCALE: 1/4" = 1'-0"

1
 A411B
 ENLARGED ELEVATION
 SCALE: 1/4" = 1'-0"



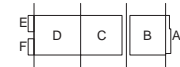
4
 A411B
 BUILDING 2
 ENLARGED ELEVATION
 SCALE: 1/4" = 1'-0"

DRAWING SET	CD
COPYRIGHT	2013
FILE NAME	2013027_02_A411B.DWG
REVISIONS	CONST. SET 01-08-14

DRAWN	
CHECKED	RG
DATE	10-29-13
PROJECT NO.	2013027_02
PROJECT TITLE	

ALLIANT ENERGY CENTER PAVILIONS
BID # 313072

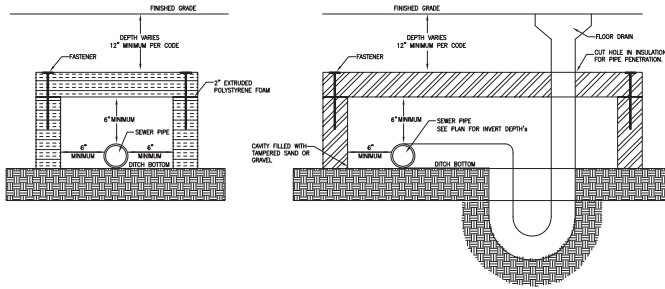
1919 ALLIANT ENERGY CENTER WAY
 MADISON, WISCONSIN 53713



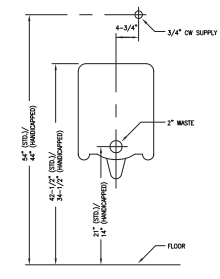
SHEET TITLE
ENLARGED EXTERIOR ELEVATIONS

SHEET NO.
A411B

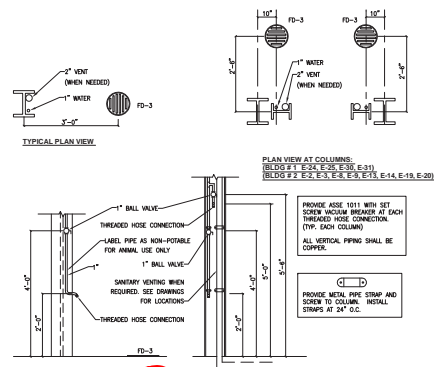
ADMIN/ARCHITECT 09/09/13 2:27 PM C:\313072027\ALLIANT ENERGY CENTER - L162013027.dwg, PLOT: LE:\DRAWINGS\2013027_02_A411B.DWG



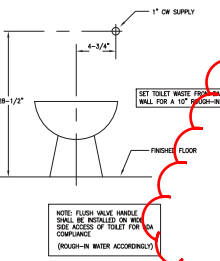
12
P401 SANITARY INSULATION DETAIL
SCALE: N.T.S.



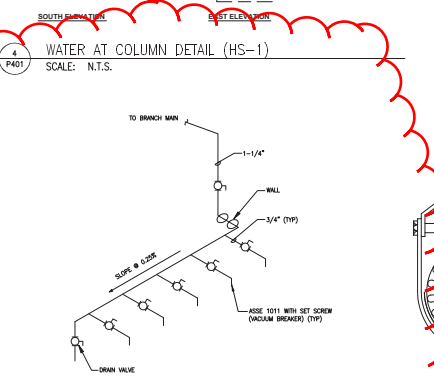
8
P401 URINAL
SCALE: N.T.S.



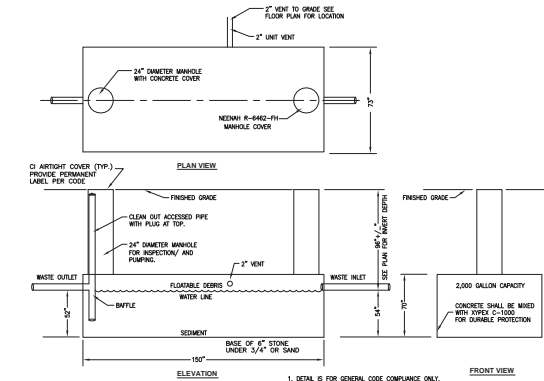
4
P401 WATER AT COLUMN DETAIL (HS-1)
SCALE: N.T.S.



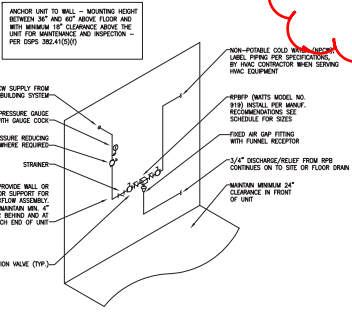
9
P401 FLUSH VALVE WC-FLR MT-ADA
SCALE: N.T.S.



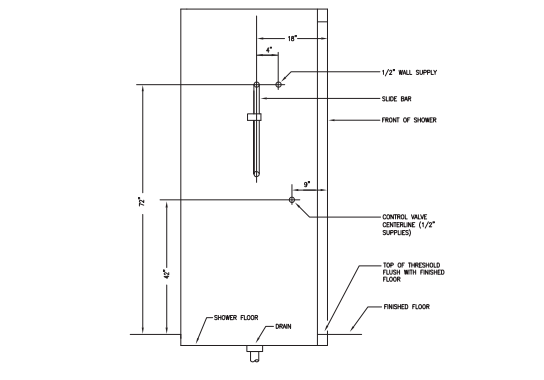
5
P401 WASH BAY DETAIL
SCALE: N.T.S.



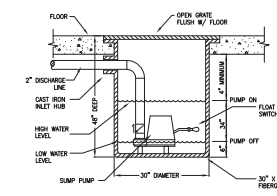
13
P401 SEDIMENT SEPARATOR TANKS (SST-1)
SCALE: N.T.S.



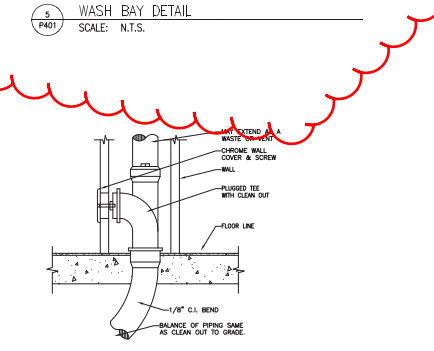
10
P401 BACKFLOW DETAIL (MILK PARLOR)
SCALE: N.T.S.



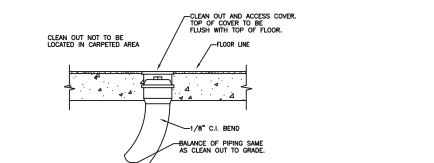
14
P401 ADA SHOWER
SCALE: N.T.S.



11
P401 ELEVATOR SUMP BASIN DETAIL
SCALE: N.T.S.



6
P401 WALL CLEAN-OUT DETAIL (WCO)
SCALE: N.T.S.



7
P401 FLOOR CLEAN-OUT DETAIL (FCO)
SCALE: N.T.S.

PLUMBING LEGEND

PLUMBING SYMBOL	LEGEND
S/W	Waste Pipe Below Grade
FD	Floor Drain
SD	Shower Drain
WC	WALL CLEAN OUT
FFCO	FLUSH FLOOR CLEAN OUT
OV	Gate Valve
CV	Check Valve
BV	Ball Valve
UP	Pipe Up
DN	Pipe Down
HWR	Hot Water Recirculation Pipe
UP	Pipe Union
PG	Pressure Gauge
VT	Thermometer & Well
VTR	Vent Thru Roof
S	Strainer
BV	Butterfly Valve
BSV	Balance, Shut-Off Valve
PRV	Pressure Reducing Valve
P	Pump
WCO	Wall Cleanout
FCO	Floor Cleanout

PLUMBING ABBREVIATIONS

EW	Electric Water Cooler
FD	Floor Drain
SD	Shower Drain
WCO	WALL CLEAN OUT
FFCO	FLUSH FLOOR CLEAN OUT
OV	Gate Valve
CV	Check Valve
BV	Ball Valve
UP	Pipe Up
DN	Pipe Down
HWR	Hot Water Recirculation Pipe
UP	Pipe Union
PG	Pressure Gauge
VT	Thermometer & Well
VTR	Vent Thru Roof
S	Strainer
BV	Butterfly Valve
BSV	Balance, Shut-Off Valve
PRV	Pressure Reducing Valve
P	Pump
WCO	Wall Cleanout
FCO	Floor Cleanout

PLUMBING SYMBOLS

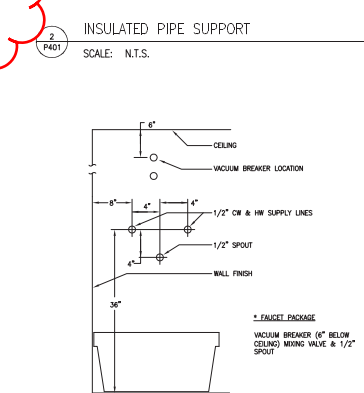
WATER HAMMER ARRESTOR	W
THERMOSTATIC MIXING VALVE	T
BALL VALVE	B
FLOW DIRECTION	→
PRESSURE REGULATING VALVE	PRV

1
P401 PLUMBING LEGEND
SCALE: N.T.S.

PIPE DIAMETER	SHIELD LENGTH
UP TO 3"	12"
4"	15"
6"	21"
8" & LARGER	+

+ INCOMPRESSIBLE INSULATING BLOCK AT HANGER WITH 2" SHIELD.

INSULATED PIPE SUPPORT
SCALE: N.T.S.



3
P401 MOP BASIN
SCALE: N.T.S.

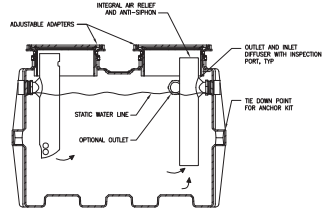


DRAWING SET	CD
COPYRIGHT	2013
CHECKED	RG
DATE	10-29-13
PROJECT NO.	2013027.02
PROJECT TITLE	ALLIANT ENERGY CENTER PAVILIONS CENTER PAVILIONS BID # 313072

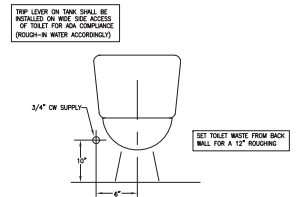
1919 ALLIANT ENERGY CENTER WAY
MADISON, WISCONSIN 53713

SHEET TITLE
PLUMBING DETAILS

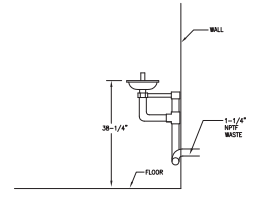
SHEET NO.
P401



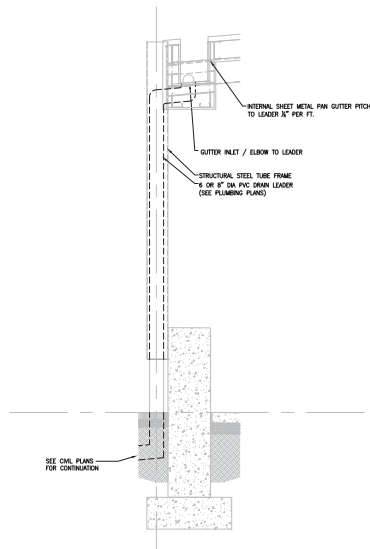
11 GREASE INTERCEPTOR
SCALE: N.T.S.



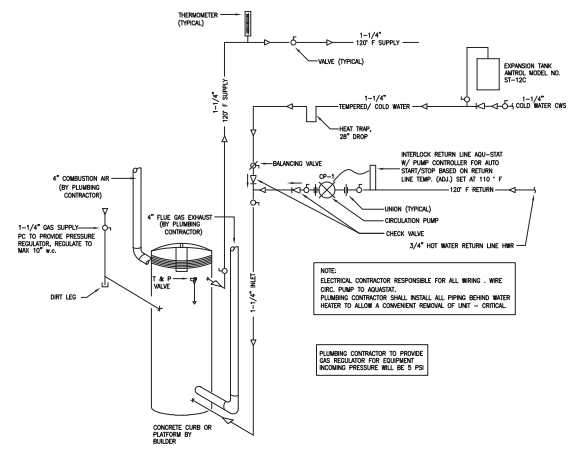
7 WC-TANK (PRESSURE ASSISTED)
SCALE: NONE



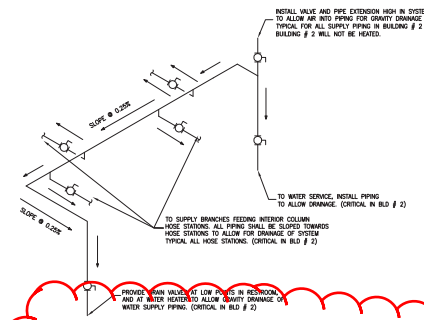
8 EMERGENCY EYE WASH
SCALE: N.T.S.



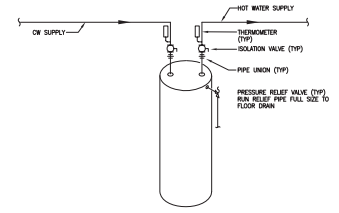
4 STORM WATER LEADER AT COLUMN
SCALE: NONE



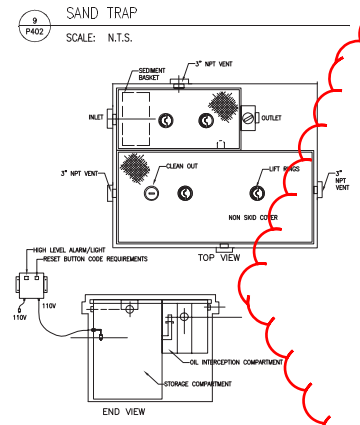
1 WATER HEATER SYSTEM DETAIL (WH-1)
SCALE: N.T.S.



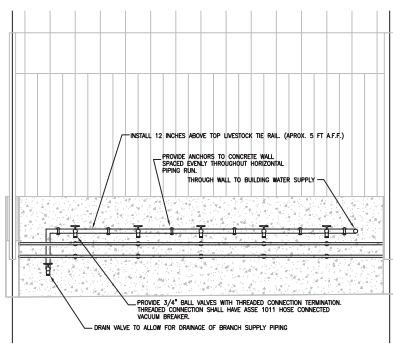
5 GENERAL PIPING DETAIL
SCALE:



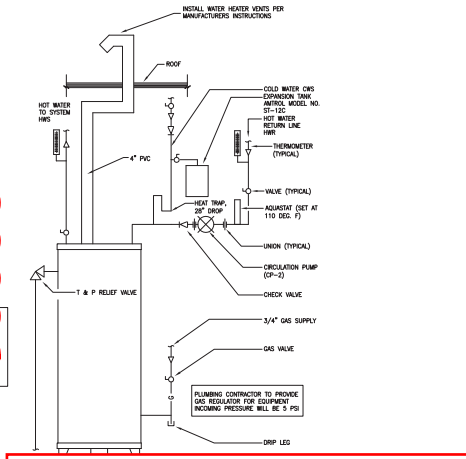
2 WATER HEATER DETAIL (WH-3, WH-4)
SCALE: NONE



9 SAND TRAP
SCALE: N.T.S.



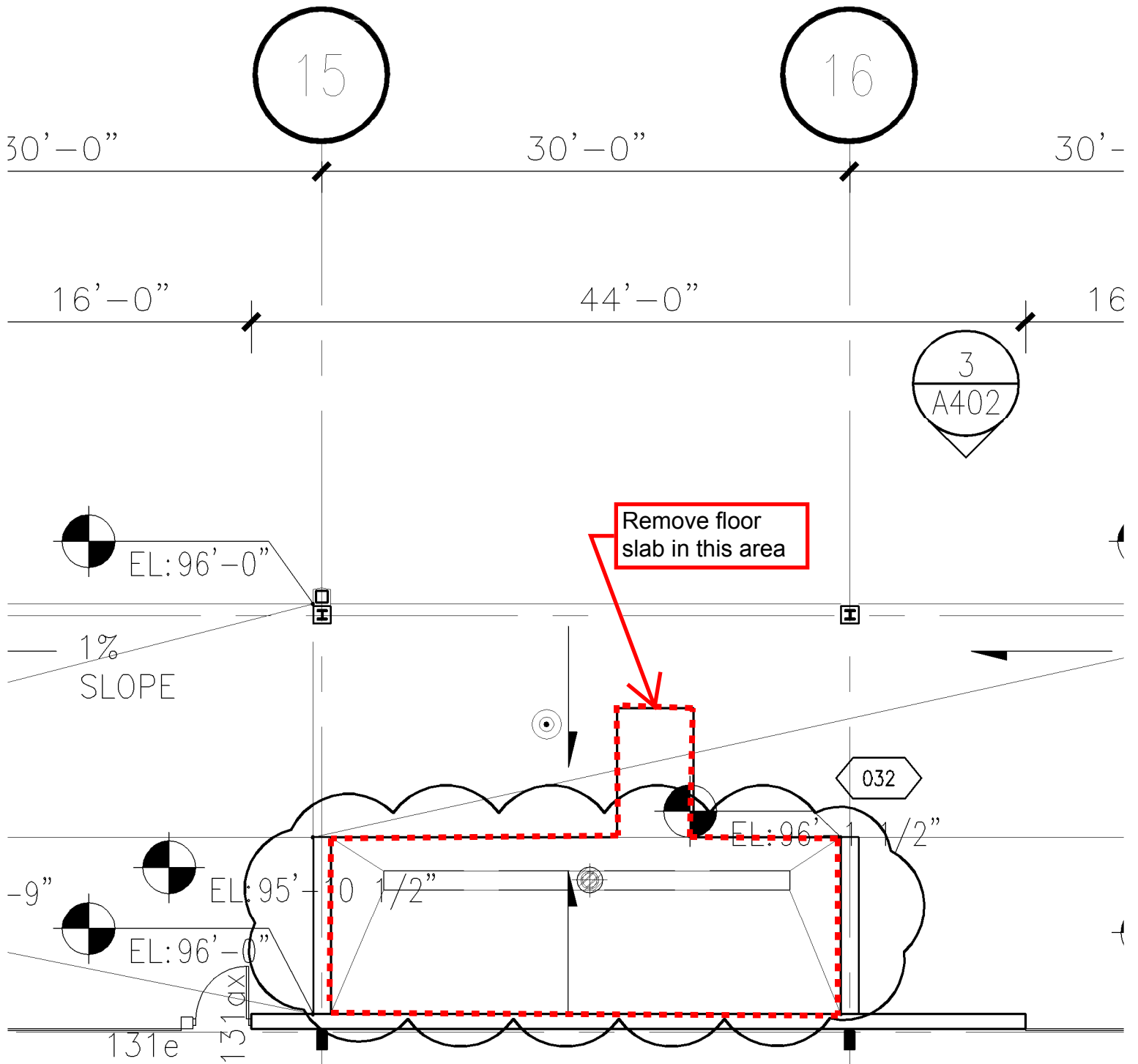
6 WASH BAY ELEVATION DETAIL
SCALE:



3

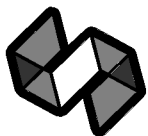
Note: Water Supply piping should be installed below tie rails to match existing wash racks.

JUSTIN BALABAN 2008.03.02.PIPING_001.DWG - ALLIANT ENERGY CENTER, PAVILION 001.DWG - AND - 14.11.14.MADISON.WISCONSIN.2013.07.02.P402.DWG



SUPPLEMENTAL DRAWING

SUPPLEMENTAL INSTRUCTION #32 Demo



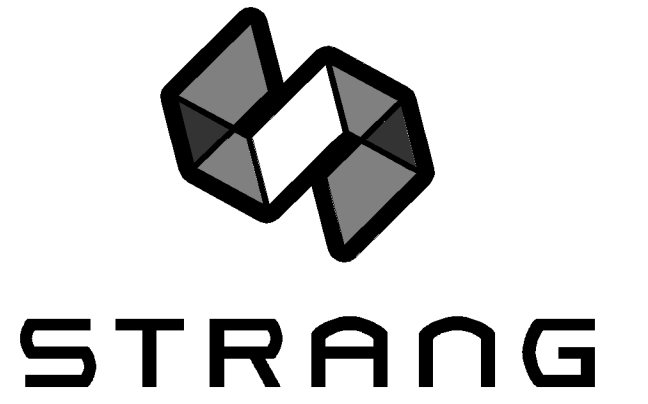
STRANG

ARCHITECTURE ENGINEERING INTERIOR DESIGN

SI #32

**ALLIANT ENERGY
CENTER PAVILIONS**

1919 ALLIANT ENERGY CENTER WAY
MADISON, WISCONSIN 53713
07/28/2014



ARCHITECTURE
ENGINEERING
INTERIOR DESIGN

STRANG INC.
6411 MINERAL POINT ROAD
MADISON, WI 53705-4395
T/ 608 276 9200
F/ 608 276 9204

GENERAL NOTES	
1.	ALL DIMENSIONS ARE GIVEN TO FACE OF WALL OR CENTERLINES. SEE WALL SECTIONS AND PARTITION TYPE SECTIONS FOR CONSTRUCTION.
2.	HOLD DOOR FRAMES 4" FROM ADJACENT WALLS, U.N.O.
3.	GENERAL CONTRACTOR TO PROVIDE BLOCKING FOR ALL WALL MOUNTED ITEMS INCLUDING OWNER FURNISHED ITEMS. COORDINATE WITH OWNER. VERIFY WITH OWNER THE EXACT HEIGHT AND LOCATION OF ALL WALL-MOUNTED AND CEILING MOUNTED EQUIPMENT.
4.	REFER TO LOOSE UNLIT SCHEDULE ON SHEET S001 FOR UNLIT REQUIREMENTS AT HVAC OPENINGS IN MASONRY WALLS.
5.	ALL WOOD FRAMING AND/OR BLOCKING USED IN EXTERIOR WALL SYSTEMS TO BE PRESSURE TREATED "FR" TYPE.
6.	FLOOR SLAB IN MILKING PARLOR TO ACCOMMODATE EQUIPOTENTIAL GROUNDING (SEE STRUCTURAL AND ELECTRICAL DRAWINGS FOR DETAILS)
7.	REFER TO STRUCTURAL PLANS, S201B, S201C & S201D FOR INTERIOR CONCRETE SLAB JOINT LAYOUT
8.	OWNER PROVIDED CONCESSION AND MILK HOUSE/ PARLOR EQUIPMENT SHOWN FOR ROUGH IN LOCATIONS. COORDINATE FINAL EQUIPMENT SELECTION / SPECIFICATIONS PRIOR TO WORK.
9.	EXTERIOR ENVELOPE @ MILK HOUSE/ PARLOR/ MECHANICAL ROOMS, 140-142 AND CONCESSION ROOM 143, PROVIDE CODE MINIMUM R- VALUES, SEE 1/A507, 1/A508 FOR DETAILS.
10.	OFBI RUBBER FLOORMATS FOR MILK PARLOR
11.	PROVIDE 18 GA. SHEET METAL STRAPPING BY 6" WIDE AT ALL WALL MOUNTED ITEMS LOCATED ON OMB OVER METAL STUDS. ROOMS 129,130A,131,132,133A,133A,149,149A AND 150, THE UPPER PORTION OF ALL PARTITIONS IS TO BE PROVIDED AS PRE-ENGINEERED METAL BUILDING CONSTRUCTION PER SECTION 1/A507
12.	

PLAN - SPECIFIC NOTES	
1	2" GALVANIZED PIPE RAIL ATTACHED ENTIRE LENGTH OF WALL @ 5'-0" O.C. - LIVESTOCK TIE
2	PROVIDE ROOF LADDER W/ CAGE ATTACHED TO PEMB GIRTS & 4'-0" x 4'-0" ROOF ACCESS HATCH TO WALKABLE PLENUM - SEE SPECIFICATIONS
3	OPEN PLENUM (WALKABLE)
4	NOT USED
5	NOT USED
6	PROVIDE SP3 TO 8'-0" AND LEVEL 2 FINISH ABOVE 8'-0" JPT-1 (SSPC)
7	PROVIDE SP3 TO 10'-2" JPT-1 (SSPC)
8	PROVIDE RB-1
9	NOT USED
10	NOT USED
11	NOT USED
12	DETAIL TAG 1/A507 @ ELEC. ROOM 129, SIMILAR REPRESENTS THE TYPICAL WALL SECTION WITH METAL LINER PANEL AND 1 1/2" BOARD INSULATION TO EXTEND DOWN TO FLOOR.
13	DETAIL TAG 3/A507 SIM. @ DOOR 120B, SIMILAR REPRESENTS THE TYPICAL WALL SECTION WITHOUT THE LOUVER AND REPLACED WITH HOLLOW METAL FRAMING (BL-4).
14	DETAIL TAG 3/A507 SIM. @ DOOR 120D, SIMILAR REPRESENTS THE TYPICAL WALL SECTION @ OVERHEAD DOOR ASSEMBLY ONLY, THE WALL CONSTRUCTION ABOVE THE OVERHEAD DOOR WOULD BE 1/A508.
15	DETAIL TAG 3/A507 SIM. @ DOOR 141E, 141B, 131F, SIMILAR REPRESENTS THE TYPICAL WALL SECTION @ OVERHEAD DOOR ASSEMBLY ONLY, THE WALL CONSTRUCTION ABOVE THE OVERHEAD DOOR WOULD BE 1/A508.
16	DETAIL TAG 1/A507 SIM. @ ELEC. ROOM 132A, SIMILAR REPRESENTS THE TYPICAL WALL SECTION WITHOUT CONCRETE CURB AND CMU MASONRY VENEER WALL AND METAL LINER PANEL.
17	DETAIL TAG 3/A507 SIM. @ DOOR 131F, SIMILAR REPRESENTS THE TYPICAL WALL SECTION @ OVERHEAD DOOR ASSEMBLY ONLY, THE WALL CONSTRUCTION ABOVE THE OVERHEAD DOOR WOULD BE 1/A508.
18	DETAIL TAG 3/A507 SIM. @ DOOR 131B, SIMILAR REPRESENTS THE TYPICAL WALL SECTION WITHOUT THE LOUVER AND REPLACED WITH HOLLOW METAL FRAMING (BL-4).
19	DETAIL TAG 1/ A508 SIM. REPRESENTS TYPICAL WALL SECTION FOR PAVILION BUILDING 1 AREA B. PAVILION 1 IS A HEATED BUILDING. WALL SECTIONS FOR PAVILION BUILDING 2 AREA C & D CALLED OUT WILL BE 1/A508 SIM. SIMILAR REPRESENTS WALL SECTION WITHOUT AIR/ VAPOR BARRIER AND 1 1/2" BOARD INSULATION.

032-SI-032_07-28-14
004-SI-004_02-21-14

DRAWING SET CD

COPYRIGHT STRANG, INC. 2013

FILE NAME 2013027_02-A201C.DWG

REVISIONS ADDENDUM #2 11-14-13
CONST. SET 01-08-14
002-SI-002_02-17-14

DRAWN

CHECKED RG

DATE 04-23-14

PROJECT NO. 2013027_02

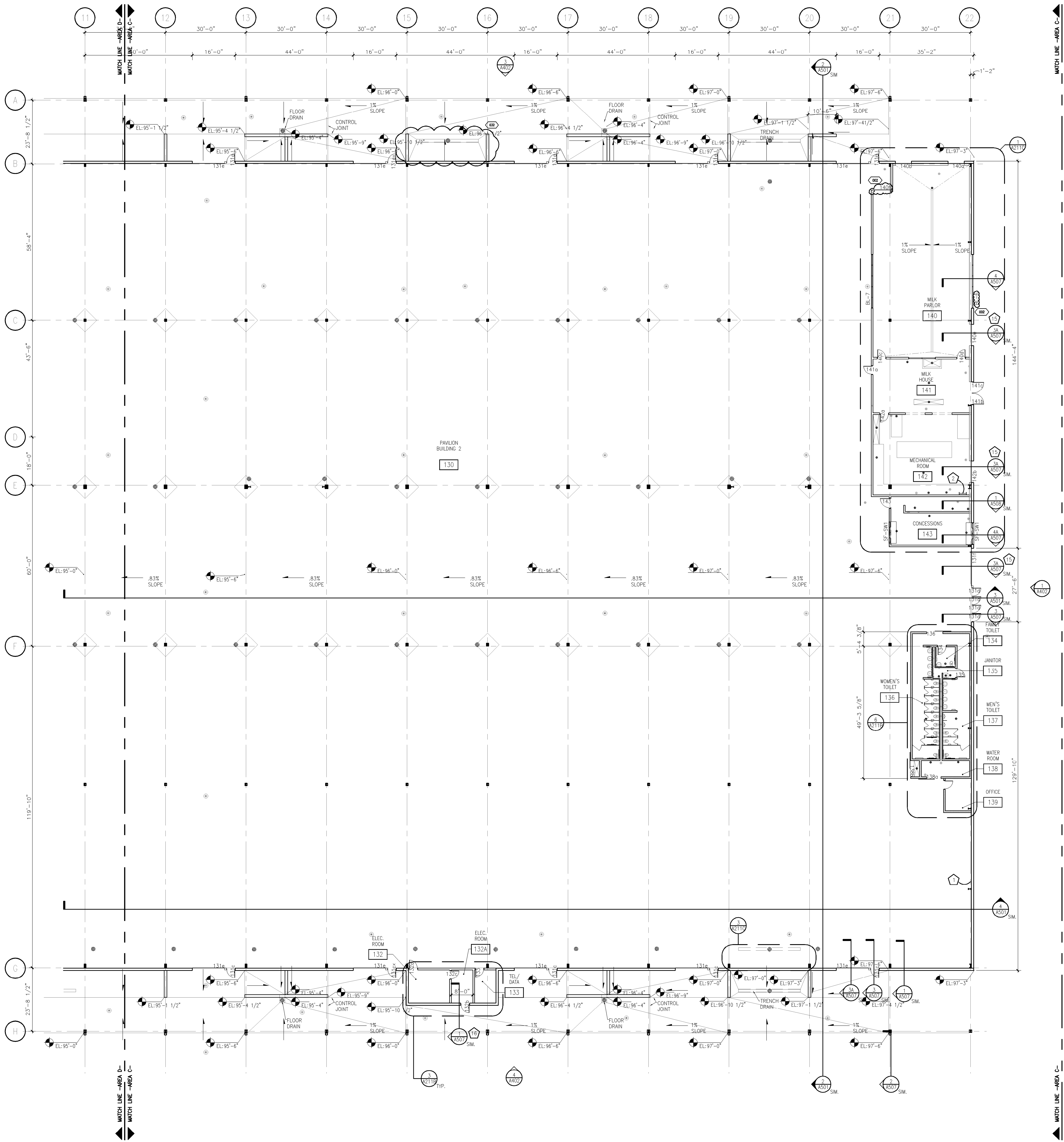
PROJECT TITLE

ALLIANT ENERGY CENTER PAVILIONS
BID # 313072

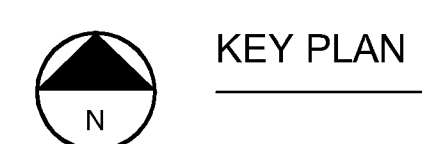
1919 ALLIANT ENERGY CENTER WAY
MADISON, WISCONSIN 53713

SHEET TITLE
FIRST FLOOR PLAN
AREA C

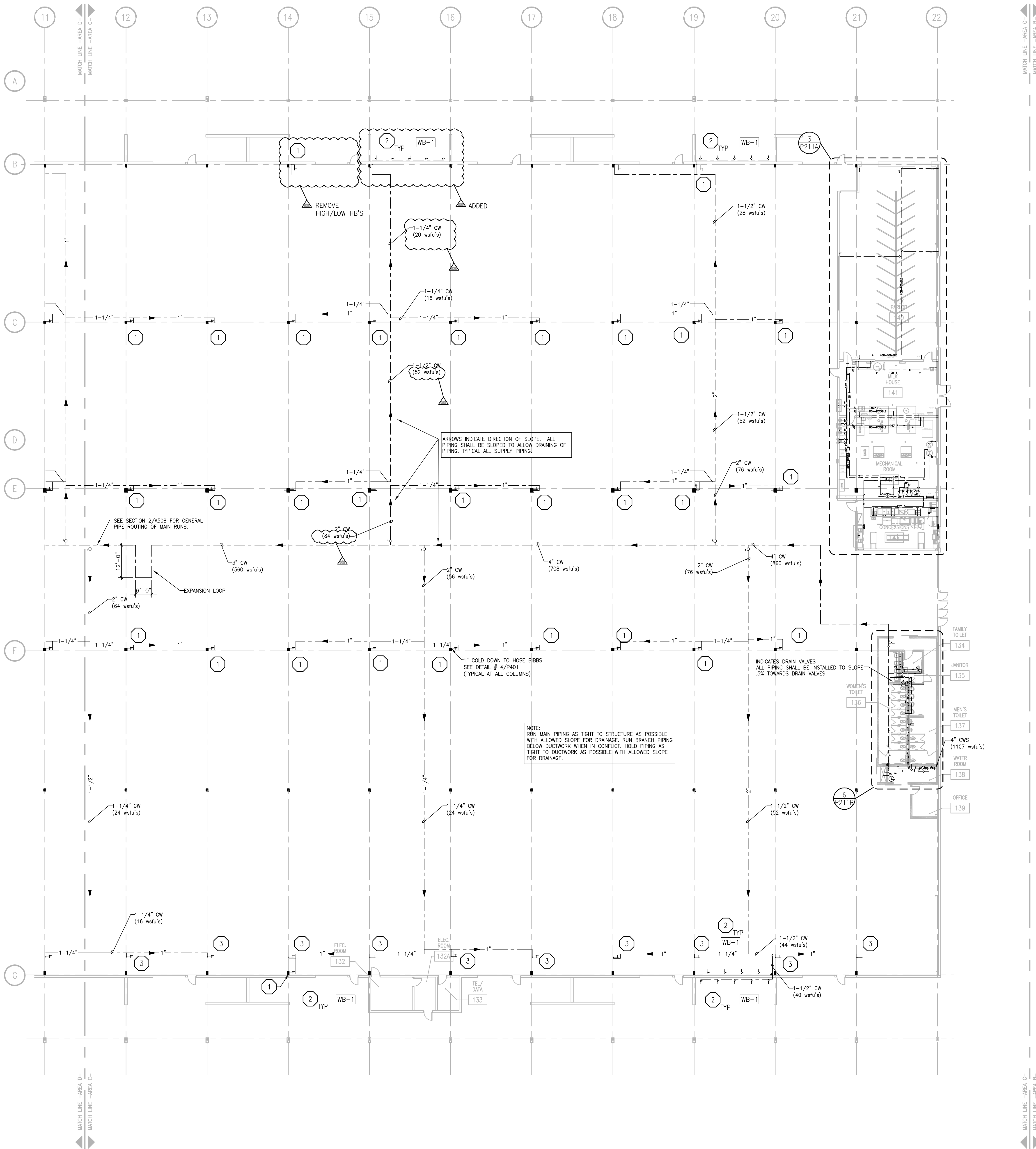
SHEET NO.
A201C



1 FIRST FLOOR PLAN - AREA C
SCALE: 1/16" = 1'-0"

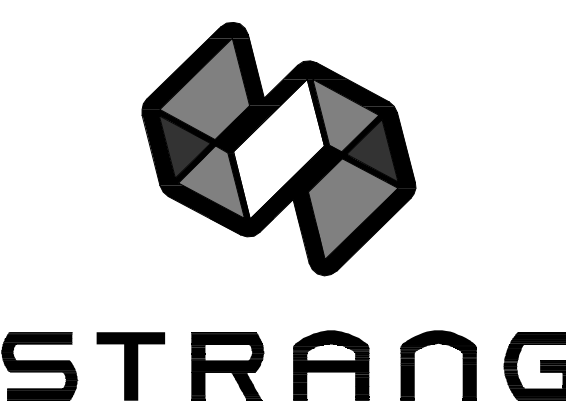


KEY PLAN



GENERAL PLUMBING NOTES	
1.	ALL SINGLE FIXTURE LINES TO BE 1/2", ALL MULTIPLE FIXTURE LINES TO BE 3/4" UNLESS NOTED OTHERWISE.
2.	ALL SUPPLY PIPING TO INTERIOR COLUMN HOSE BIBBS TO BE 1". UNLESS NOTED OTHERWISE.
3.	PIPING SHALL NOT BE ROUTED OVER ELECTRICAL PANELS AND ACCESS PANELS.
4.	PIPING SHALL NOT DIMINISH IN SIZE OPPOSITE THE DIRECTION OF FLOW.
5.	ALL SHUT-OFF VALVES SHALL BE IN ACCESSIBLE LOCATIONS.
6.	PIPING SHALL BE ROUTED AS TIGHT TO STRUCTURE AS POSSIBLE.
7.	ALL PIPING IN BUILDING #2 (C & D) SHALL BE SLOPED TO ALLOW PIPING TO BE DRAINED FOR FREEZE PROTECTION.
8.	ROUTE ALL VERTICAL PIPING AS TIGHT TO COLUMN AS POSSIBLE.

PLUMBING SUPPLY SPECIFIC NOTES	
1	1" COLD WATER DOWN TO HOSE BIBBS. PROVIDE BFP-9 ASSE 1011 BACKFLOW PREVENTOR ON EACH THREADED CONNECTION. SEE DETAIL 4/P401.
2	1-1/4" COLD WATER DOWN TO WASH BAY STATION WB-4. PROVIDE BFP-9 ASSE 1011 BACKFLOW PREVENTOR ON EACH THREADED CONNECTION. SEE DETAILS 5/P401 & 6/P402.
3	1" COLD WATER DOWN TO HOSE BIBBS. PROVIDE BFP-9 ASSE 1011 BACKFLOW PREVENTOR ON EACH THREADED CONNECTION. TERMINATE HOSE BIBB 1 FT BELOW STRUCTURE. PROVIDE SUPPORT FROM STRUCTURE FOR SUPPORT OF FLOOR TO STRUCTURE VERTICAL HOSE DEAD WEIGHT. COORDINATE EXACT DROP LOCATION WITH OWNERS FINAL ANIMAL EQUIPMENT LAYOUT.



ARCHITECTURE
ENGINEERING
INTERIOR DESIGN

STRANG INC.
6415 MINERAL POINT ROAD
MADISON, WI 53705-4395
T/ 608 276 9200
F/ 608 276 9204

REVISIONS		
NO.	DESCRIPTION	DATE
-	CONST. SET	01-08-2014
001	SI-001	01-17-2014
004	SI-04.1	05-08-2014
032	SI-032	07-28-2014
032	SI-032-R	08-01-2014

DRAWING SET	CD
COPYRIGHT	2013
FILE NAME	2013027_02-P201C-S.DWG
REVISIONS	CONST. SET 01-08-14

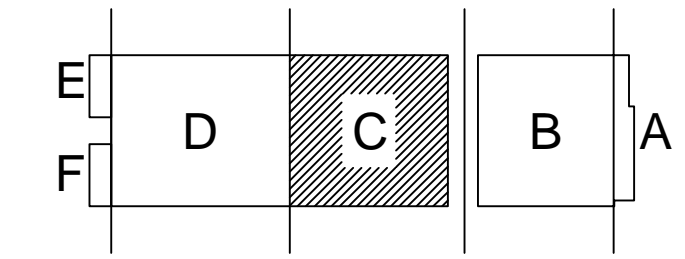
DRAWN DF
CHECKED RG
DATE 04-23-14
PROJECT NO. 2013027_02
PROJECT TITLE

ALLIANT ENERGY CENTER PAVILIONS
BID # 313072

1919 ALLIANT ENERGY CENTER WAY
MADISON, WISCONSIN 53713

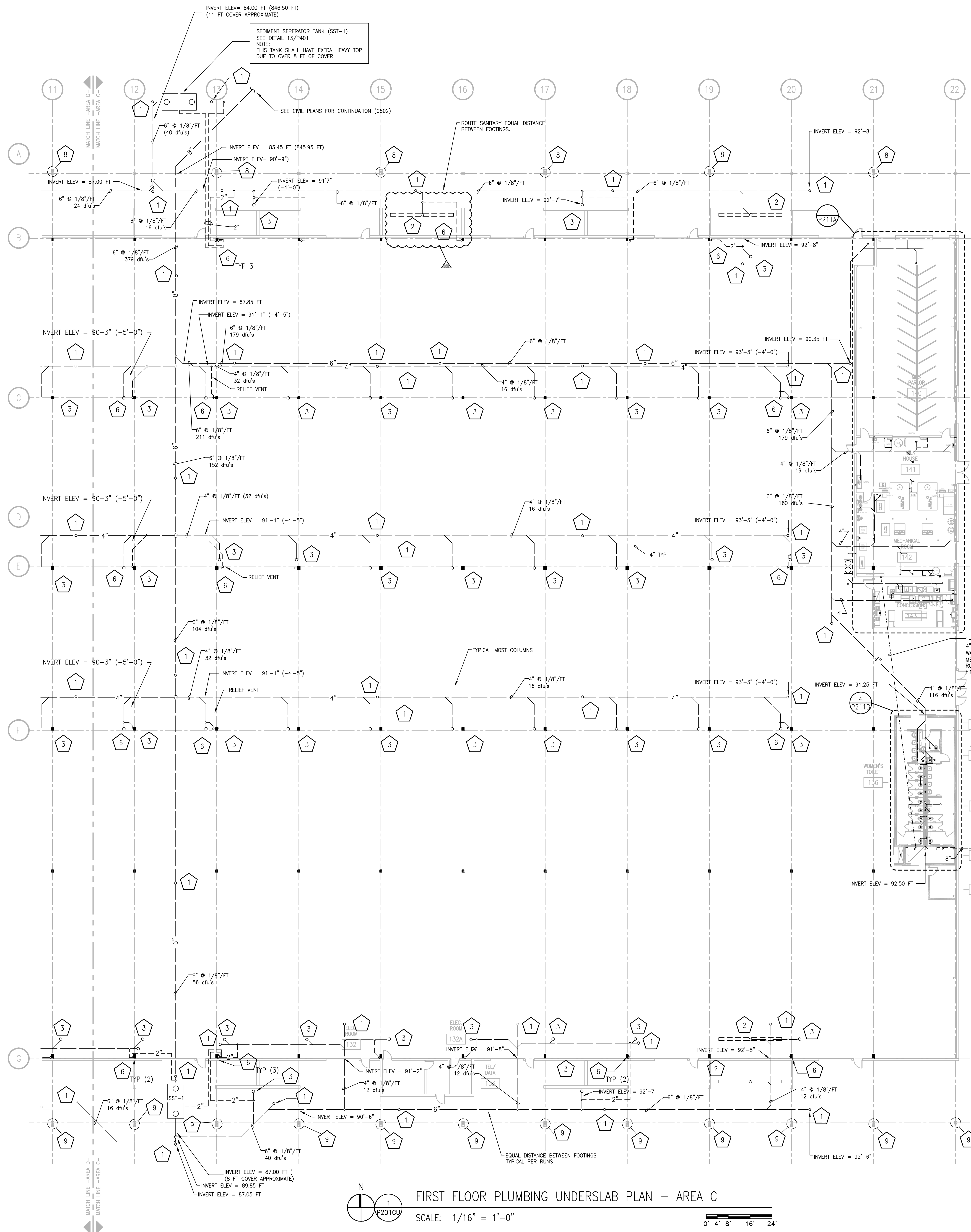
SHEET TITLE
**FIRST FLOOR
PLUMBING SUPPLY
PLAN AREA C - BLD 2**

SHEET NO.
P201C-S



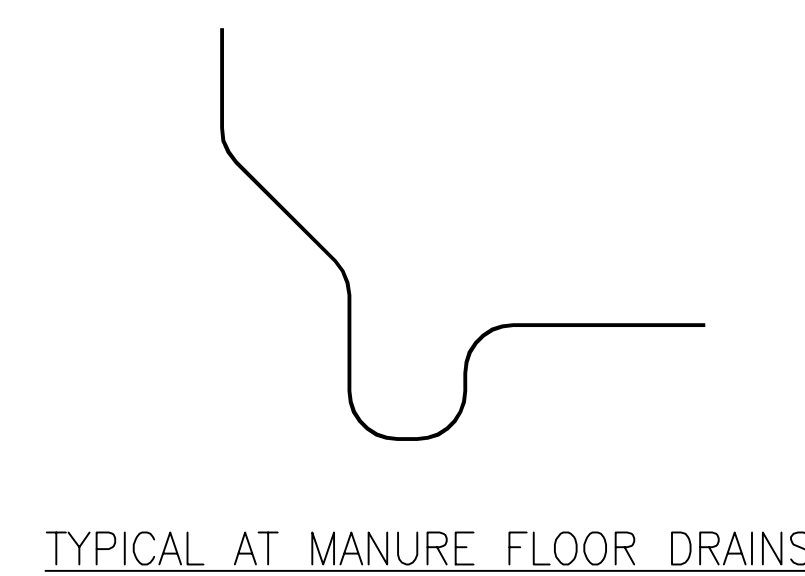
FIRST FLOOR PLUMBING SUPPLY PLAN - AREA C
SCALE: 1/16" = 1'-0"
0' 4' 8' 16' 24'

DALE FENER 2008-6-30 2:27 PM AL_2013027_02 - ALLIANT ENERGY CENTER - LEBS02013027_02 - AEC - LE_HALLDRAWINGS2013027_02_P201C-S.DWG



PLUMBING UNDERSLAB GENERAL NOTES	
1.	ALL VENTING TO BE 1-1/2" UNLESS NOTED OTHERWISE.
2.	ALL WASTE PIPING TO BE 4" UNLESS NOTED OTHERWISE.
3.	ALL PIPING 3" AND LARGER TO BE SLOPED AT 1/8" PER FOOT.
4.	ALL PIPING LESS THAN 3" TO BE SLOPED AT 1/4" PER FOOT.

PLUMBING UNDERSLAB SPECIFIC NOTES	
1	UP TO CLEAN OUT
2	UP TO TRENCH DRAIN
3	UP TO FLOOR DRAIN
4	UP TO WATER CLOSET
5	3" VENT UP
6	2" VENT UP
7	1-1/2" VENT UP
8	9,000 SQFT, 346 GPM. 6" VERTICAL STORM, 6" @ 1/4"/FT OR 8" @ 1/8"/FT HORIZONTAL STORM. PLUMBER TO PROVIDE CONNECTION TO GUTTER SYSTEM @ 20" A.F.G. (APPROX). ROUTE STORM THROUGH COLUMN & OUT BELOW GRADE TO SITE STORM. SEE DETAIL 4/P402.
9	6,500 SQFT, 230 GPM. 6" VERTICAL STORM, 6" @ 1/8"/FT HORIZONTAL STORM. SEE NOTE 8.
10	Not Used
11	UP TO SINK.
12	UP TO HUB DRAIN.
13	UP TO FLOOR SINK.
14	UP TO MOP SINK.
15	UP TO LAVATORY.
16	UP TO SHOWER DRAIN.



REVISIONS		
NO.	DESCRIPTION	DATE
-	CONST. SET	01-08-2014
004	SI-004.1	05-08-2014
014	SI-014.1	05-05-2014
021	SI-021	06-19-2014
032	SI-032	07-28-2014

DRAWING SET	CD
COPYRIGHT	2013
STRANG, INC.	

FILE NAME: 2013027_02-P201C-U.DWG

REVISIONS

DRAWN	DF
CHECKED	RG
DATE	04-23-14
PROJECT NO.	2013027_02

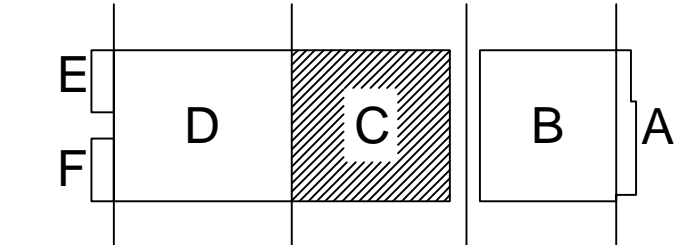
PROJECT TITLE

**ALLIANT ENERGY CENTER PAVILIONS
BID # 313072**

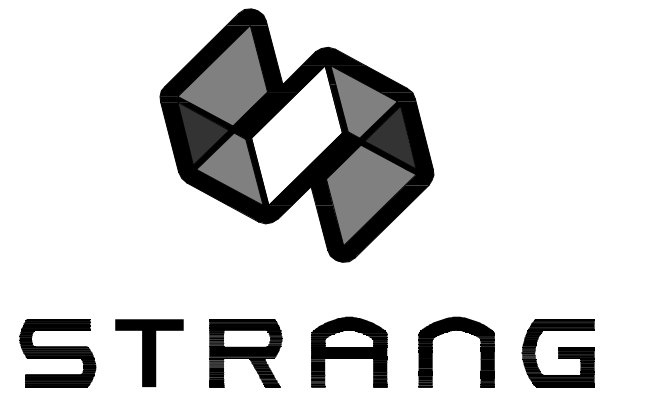
1919 ALLIANT ENERGY CENTER WAY
MADISON, WISCONSIN 53713

SHEET TITLE
**FIRST FLOOR PLUMBING
UNDERSLAB PLAN
AREA C - BLD 2**

SHEET NO.
P201C-U



DALE FENER, 2009-6-30 2:27 PM PL_2013027_02-P201C-U.DWG - ALLIANT ENERGY CENTER - LESC0303027_02 - AEC - LE HALLDRAWINGS\313072_02-P201C-U.DWG

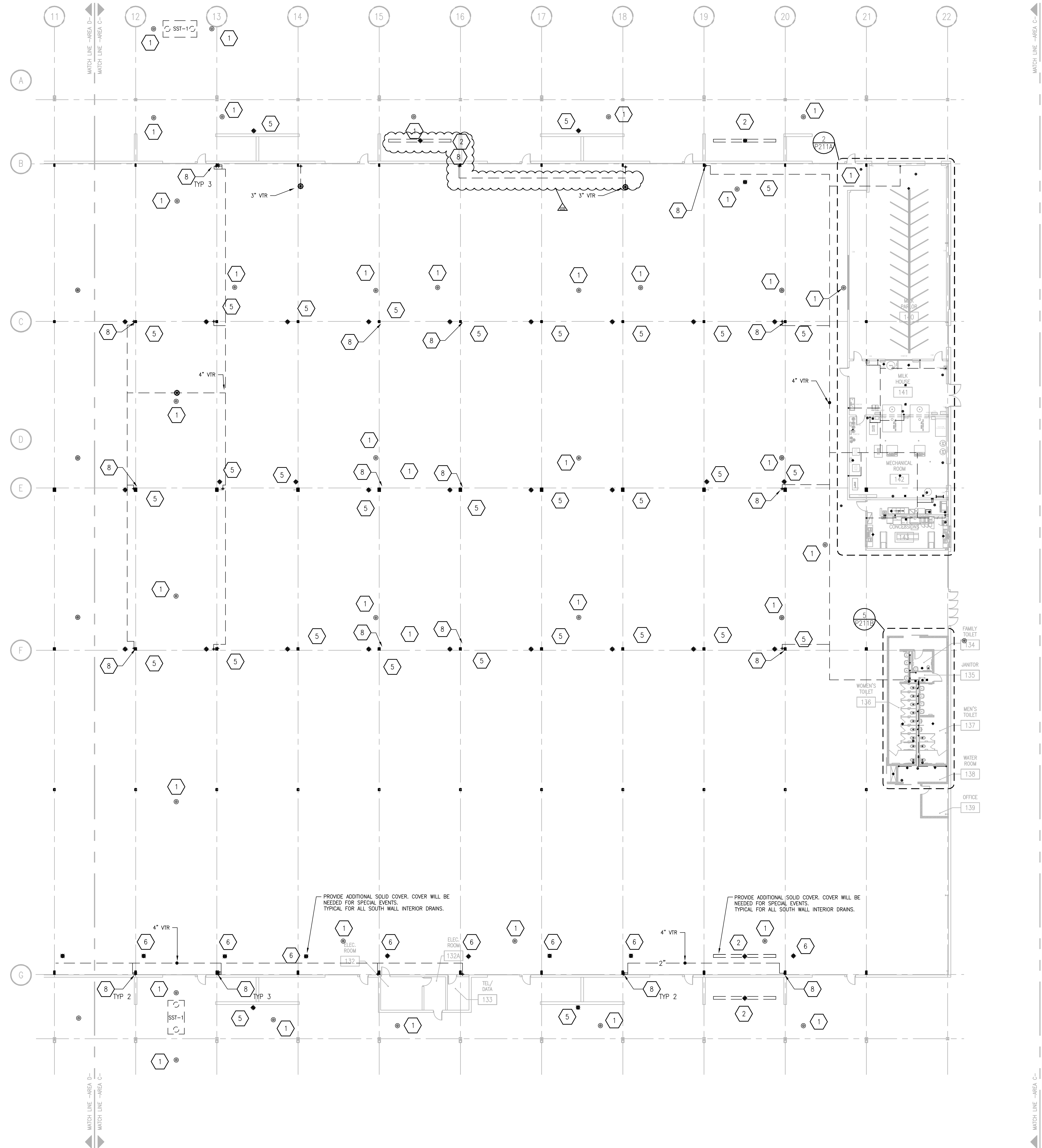


ARCHITECTURE
ENGINEERING
INTERIOR DESIGN

STRANG INC.
6411 MINERAL POINT ROAD
MADISON, WI 53705-4395
T/ 608 276 9200
F/ 608 276 9204

PLUMBING WASTE GENERAL NOTES	
1.	ALL VENTING TO BE 1-1/2" UNLESS NOTED OTHERWISE.
2.	NO PIPING SHALL BE INSTALLED WITHIN 3 FEET OF ANY ELECTRICAL PANEL. NO PIPING ABOVE OR BELOW THIS SPACE.
3.	NO PIPING SHALL BE INSTALLED ABOVE ACCESS PANELS

PLUMBING WASTE SPECIFIC NOTES	
1	CLEAN OUT
2	TD-1 TRENCH DRAIN
3	FD-1 FLOOR DRAIN
4	FD-2 FLOOR DRAIN
5	FD-3 FLOOR DRAIN
6	FD-4 FLOOR DRAIN
7	3" VENT DN
8	2" VENT DN
9	1-1/2" VENT DN
10	FS-1 FLOOR SINK
11	FS-2 FLOOR SINK



REVISIONS		
NO.	DESCRIPTION	DATE
-	CONST. SET	01-08-2014
004	SI-004.1	05-8-2014
014	SI-014.1	5-5-2014
032	SI-032	7-28-2014

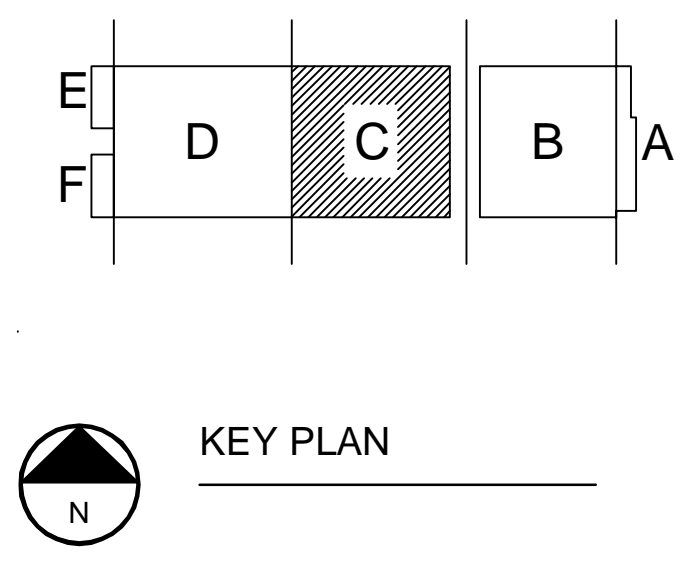
DRAWING SET	CD
COPYRIGHT	2013
STRANG, INC.	
FILE NAME	2013027_02-P201C-W.DWG
REVISIONS	CONST. SET 01-08-14

DRAWN DF
CHECKED RG
DATE 04-23-14
PROJECT NO. 2013027_02
PROJECT TITLE

1919 ALLIANT ENERGY CENTER WAY
MADISON, WISCONSIN 53713

SHEET TITLE
FIRST FLOOR PLUMBING WASTE & VENT PLAN AREA C - BLD 2

SHEET NO.
P201C-W



FIRST FLOOR PLUMBING WASTE & VENT PLAN -- AREA C
SCALE: 1/16" = 1'-0"
0' 4' 8' 16' 24'

DALE FENER, 2009-6-30 2:27 PM KL_20130207 - ALLIANT ENERGY CENTER - LESC030307_02 - AEC - 1E HALLDRAWINGS\201307_02-P201C-W.DWG