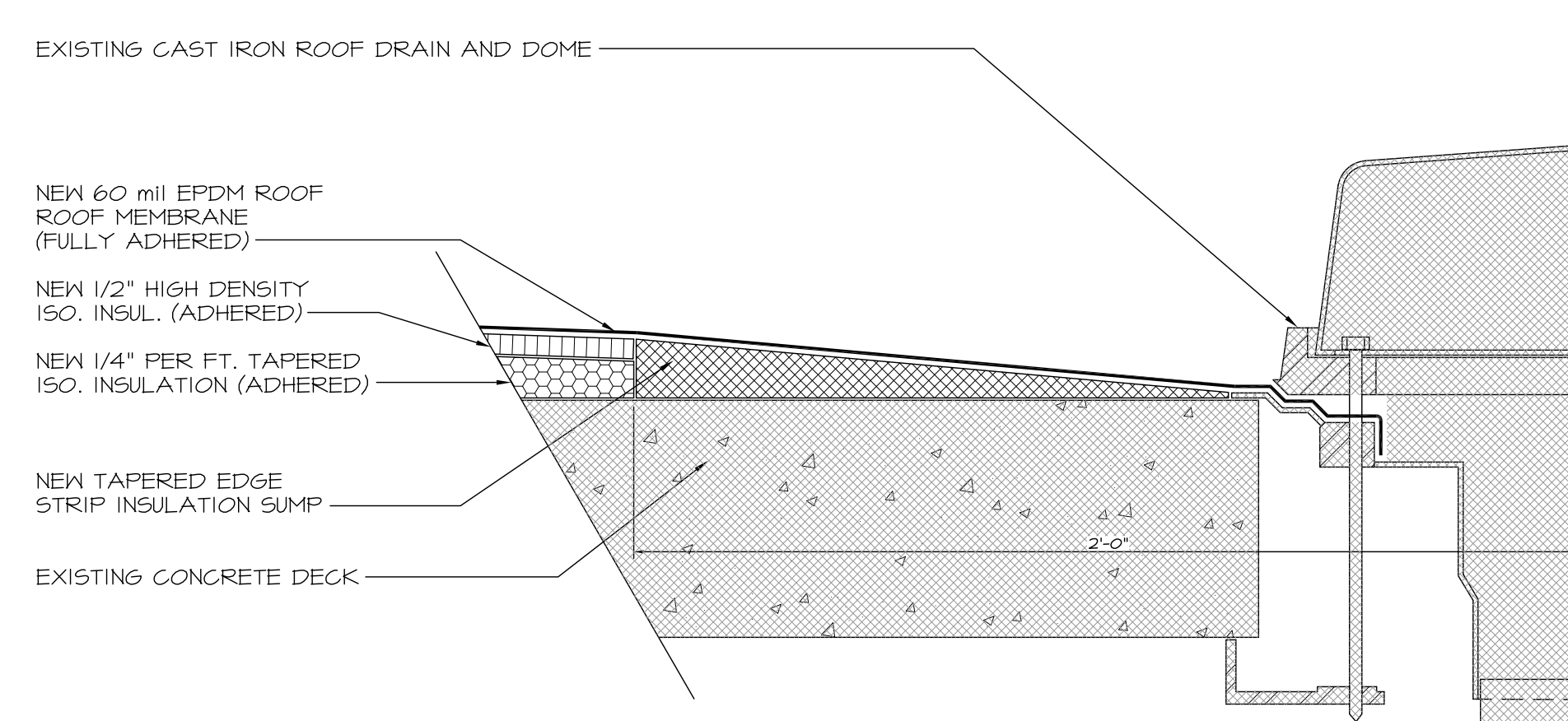
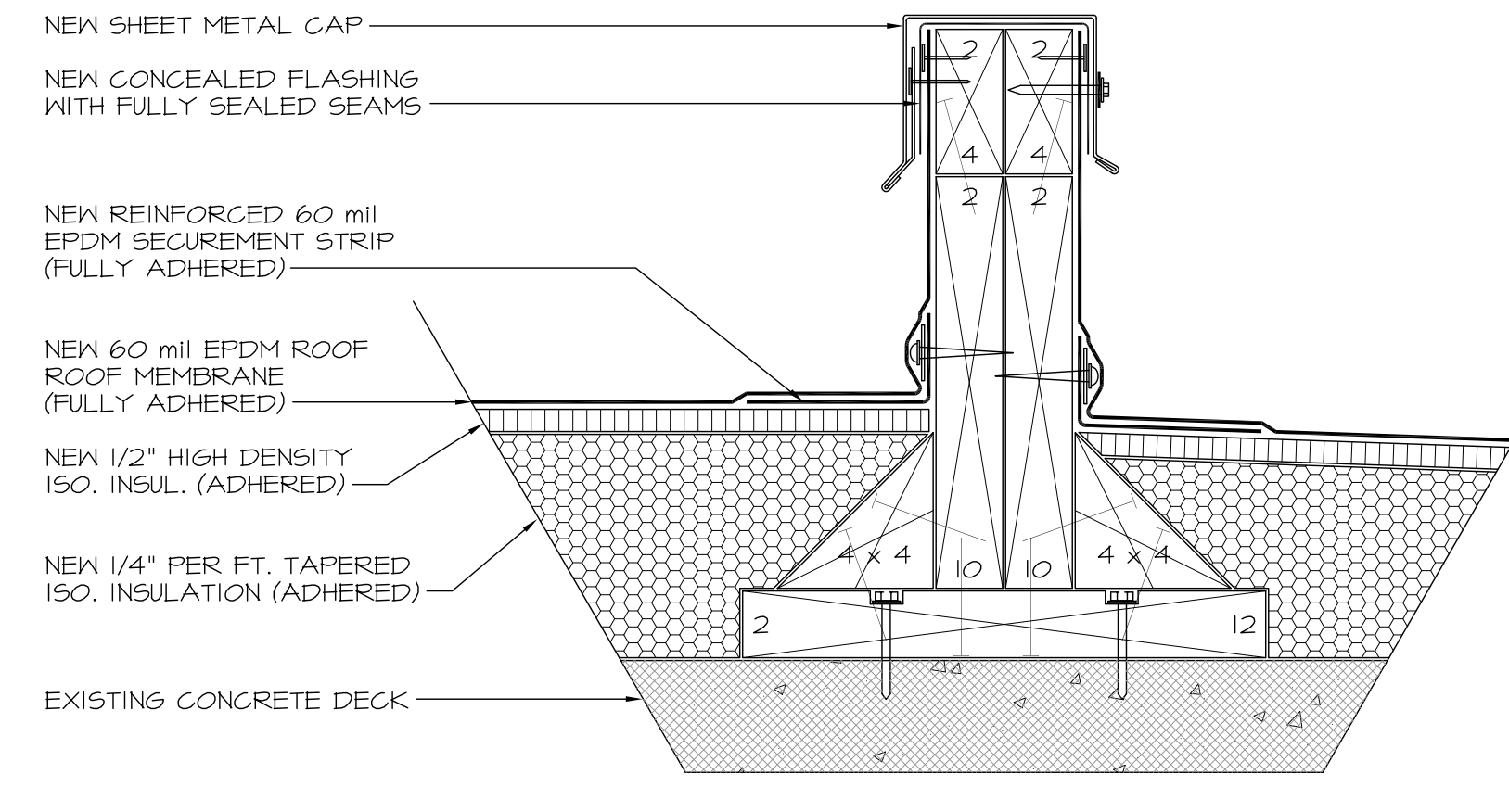


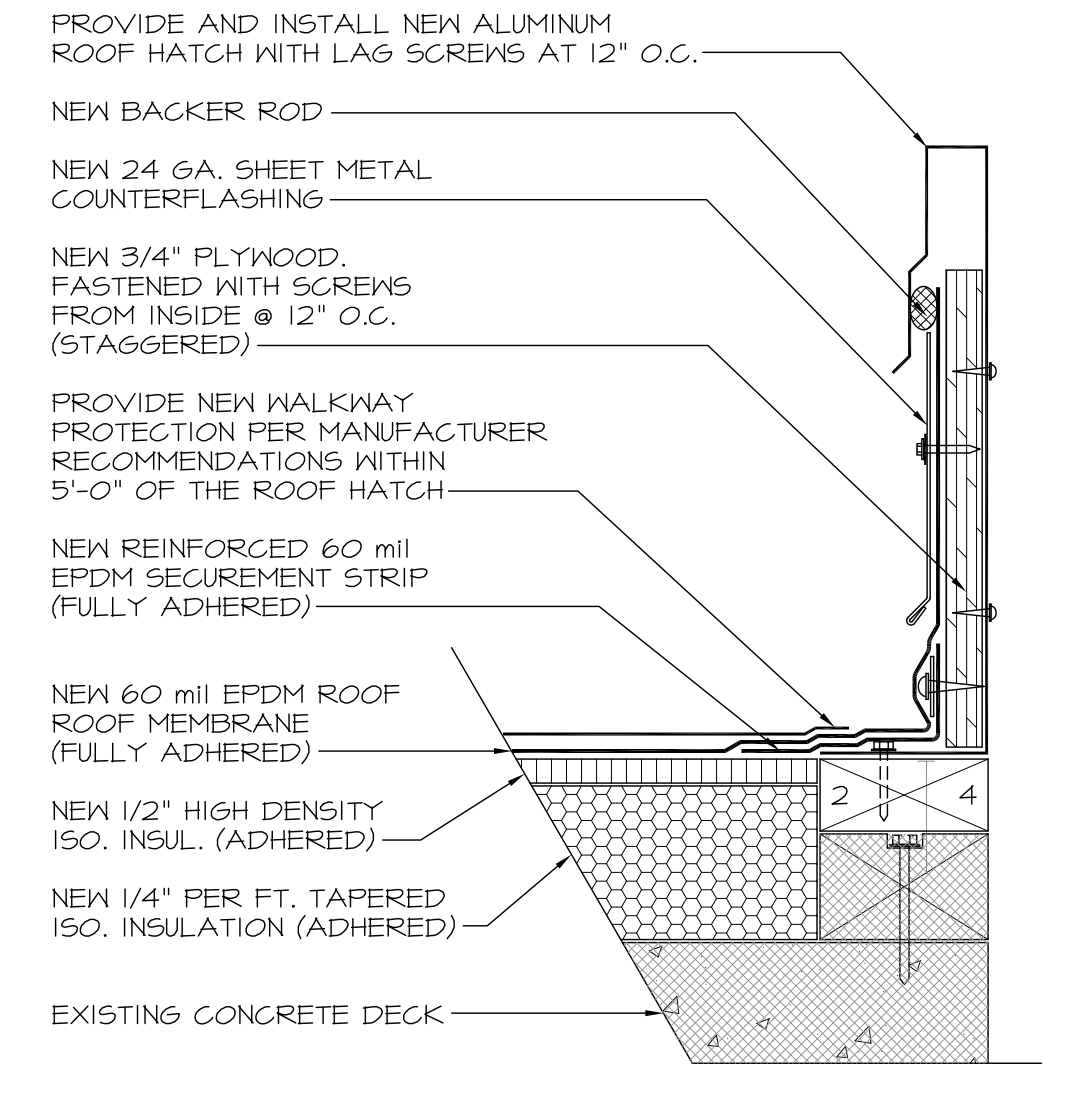
10 PLUMBING VENT DETAIL
 SCALE: 3"=1'-0" AREA A



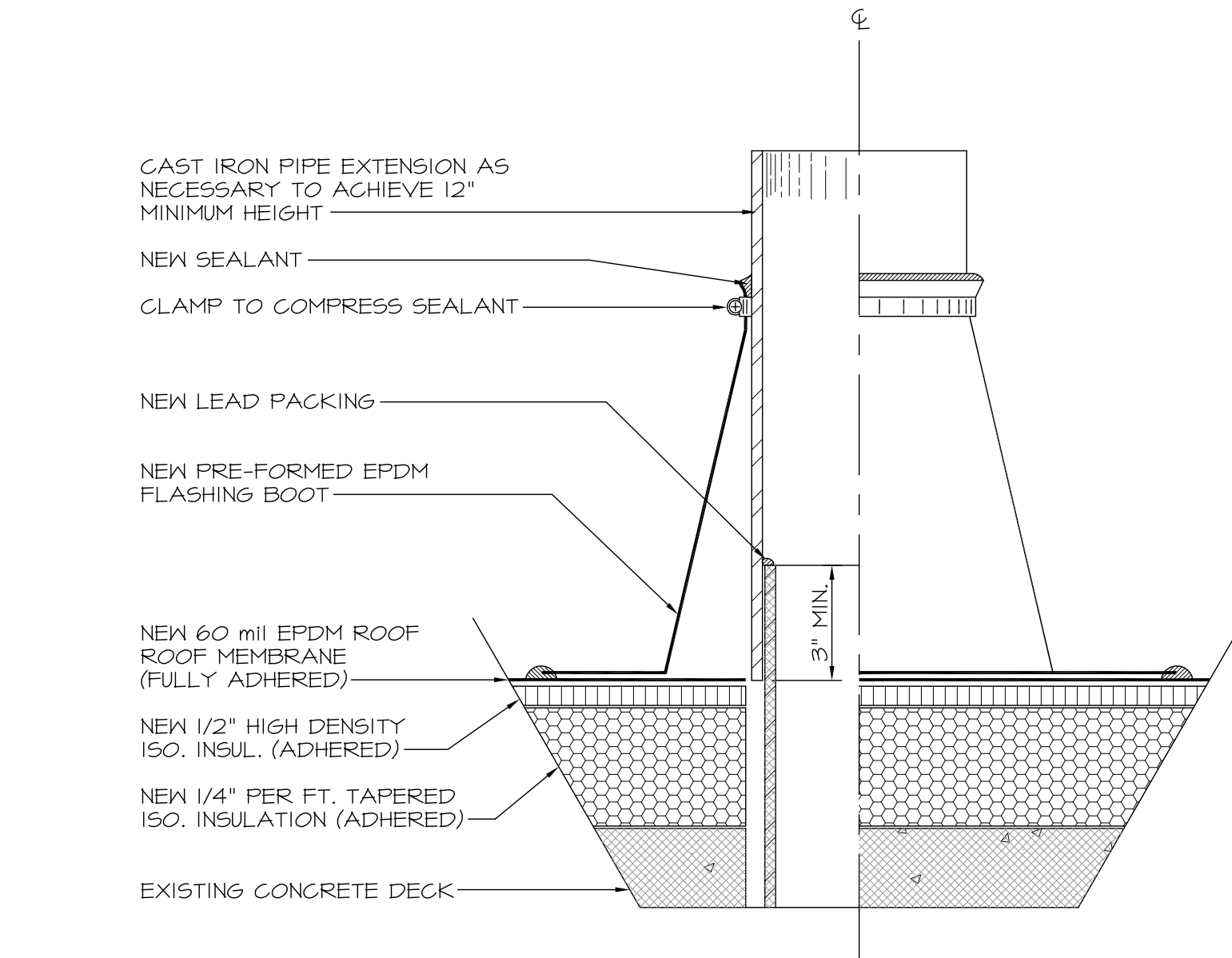
11 ROOF DRAIN DETAIL
 SCALE: 3"=1'-0" AREA A



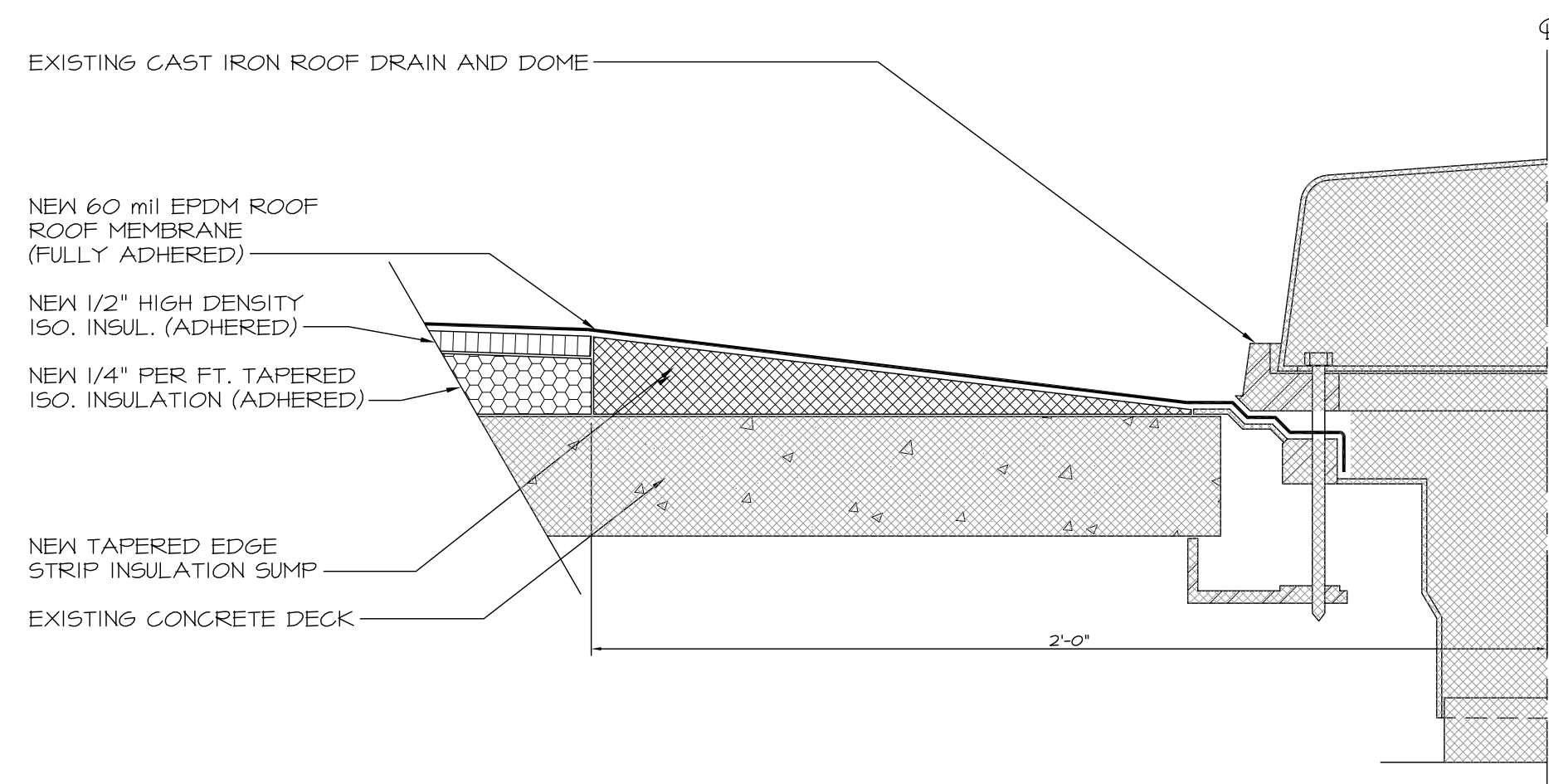
12 NEW AREA DIVIDER DETAIL
 SCALE: 3"=1'-0" AREA A



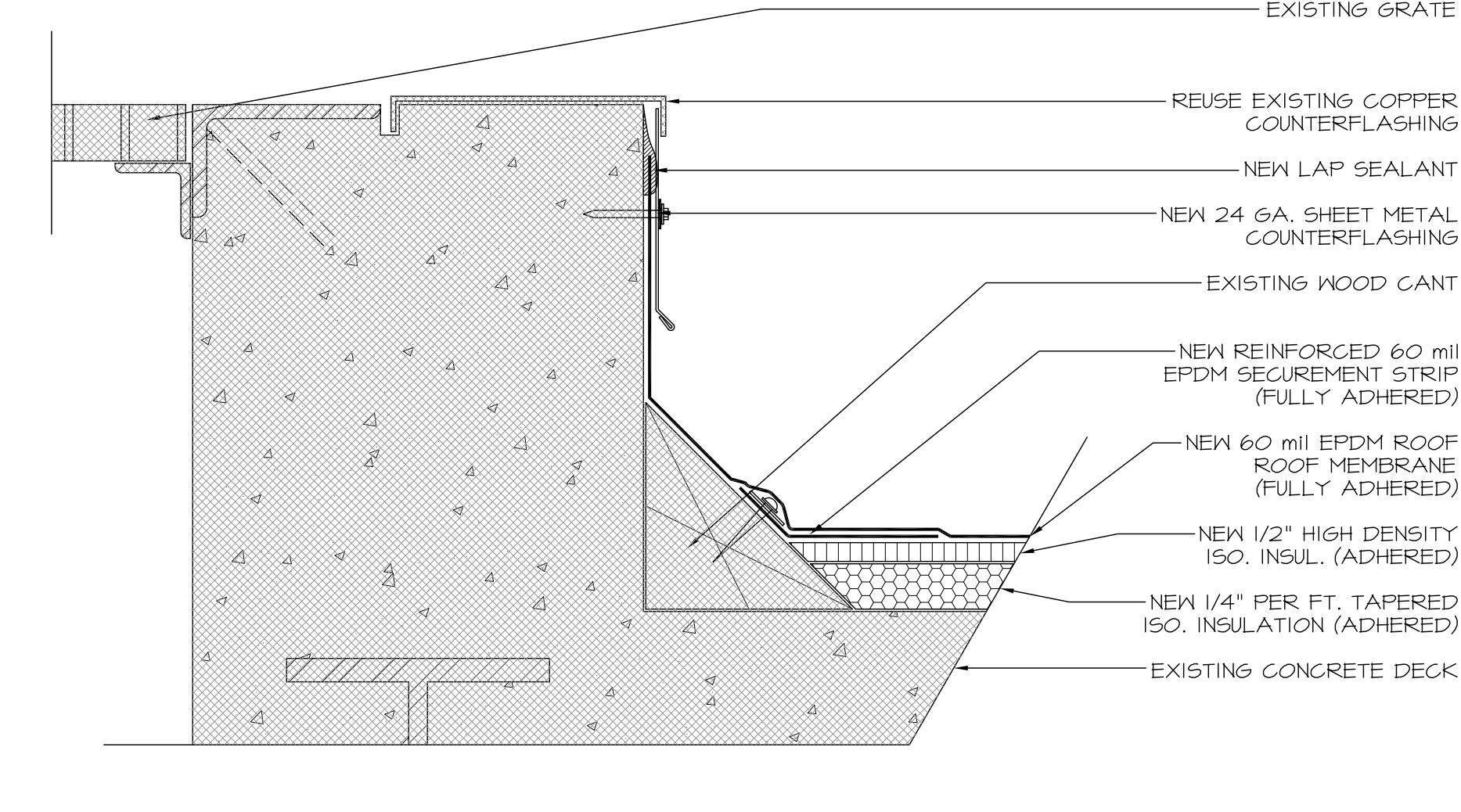
13 ROOF HATCH DETAIL
 SCALE: 3"=1'-0" AREA B



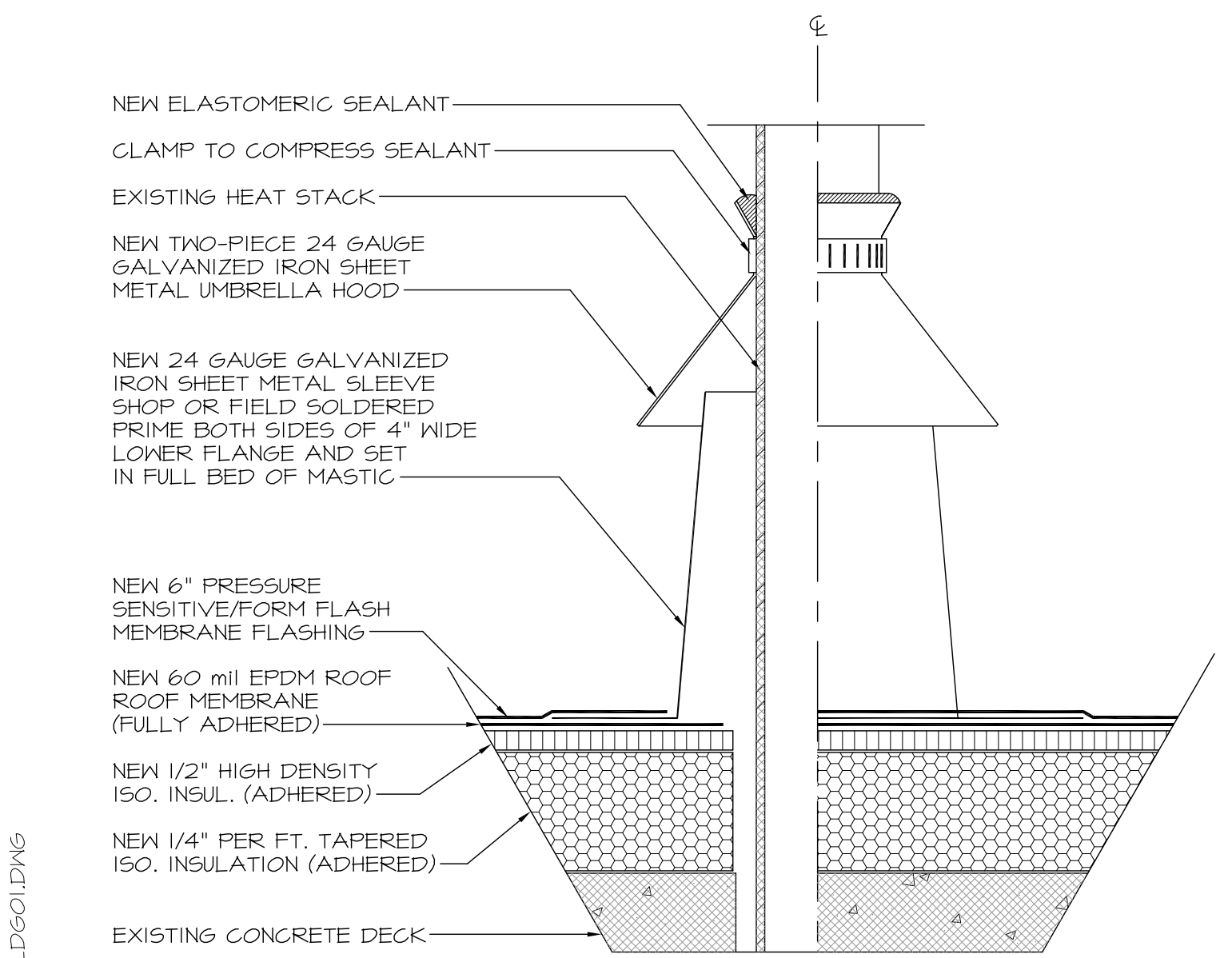
14 PLUMBING VENT DETAIL
 SCALE: 3"=1'-0" AREA B



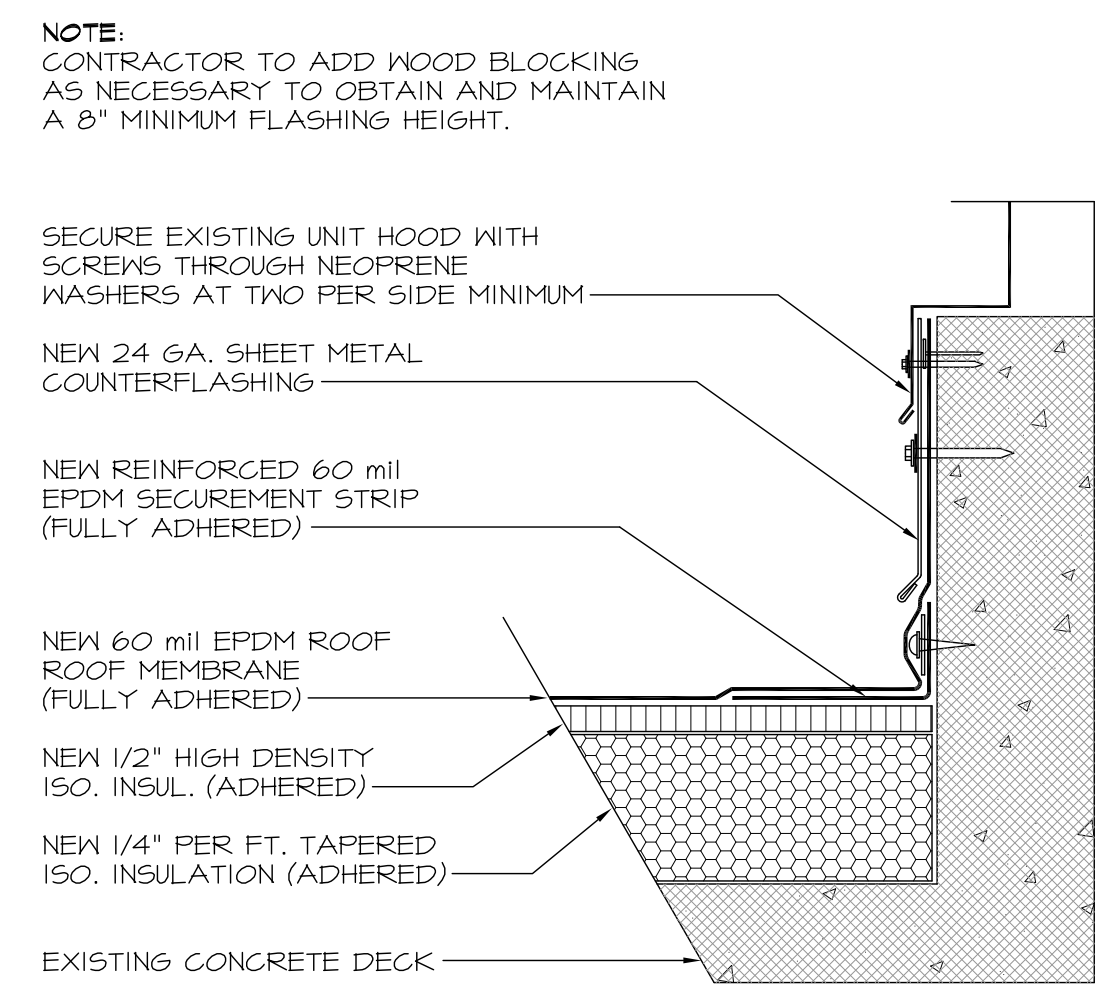
15 ROOF DRAIN DETAIL
 SCALE: 3"=1'-0" AREA B



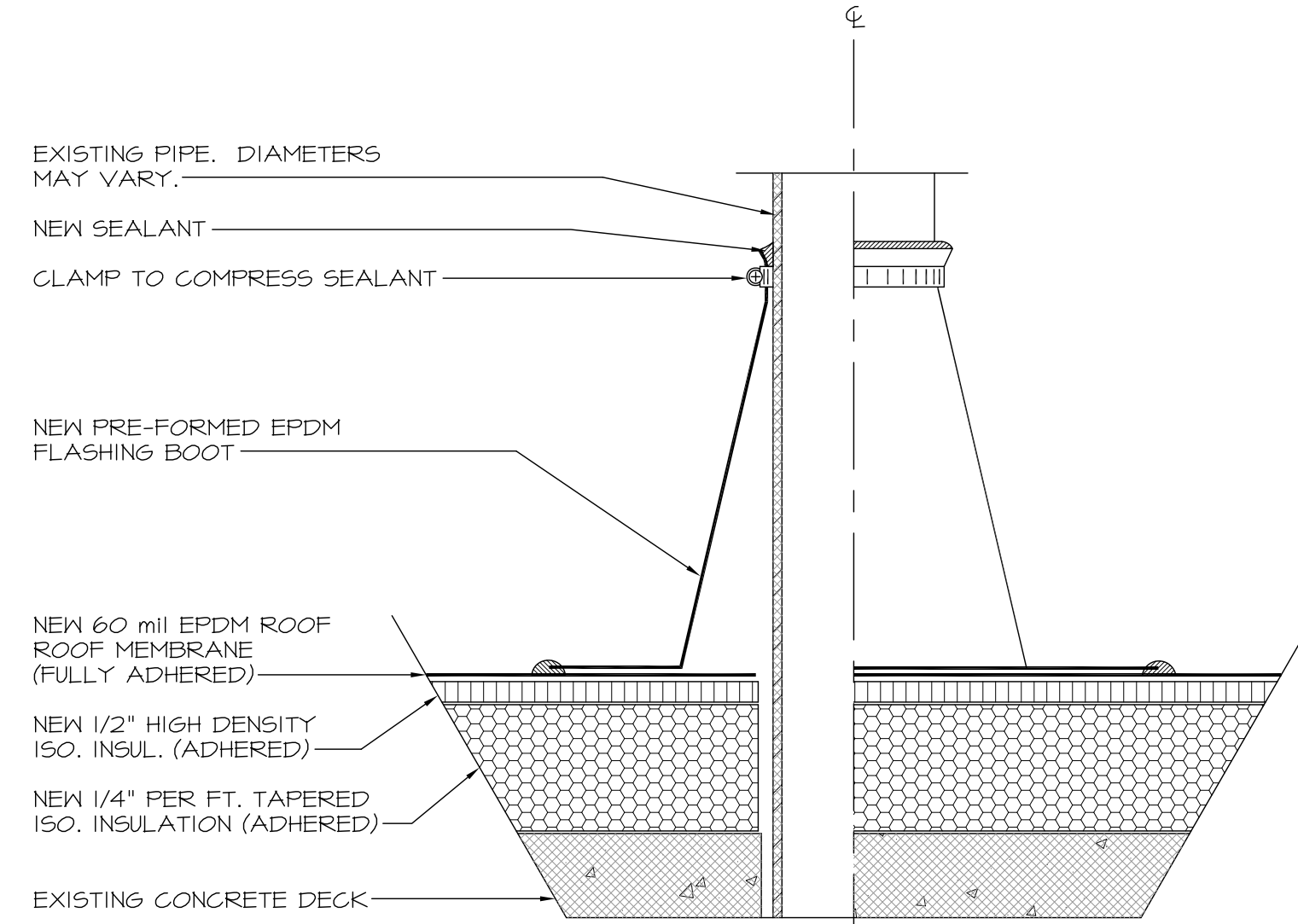
16 GRATE FLASHING DETAIL
 SCALE: 3"=1'-0" AREA B



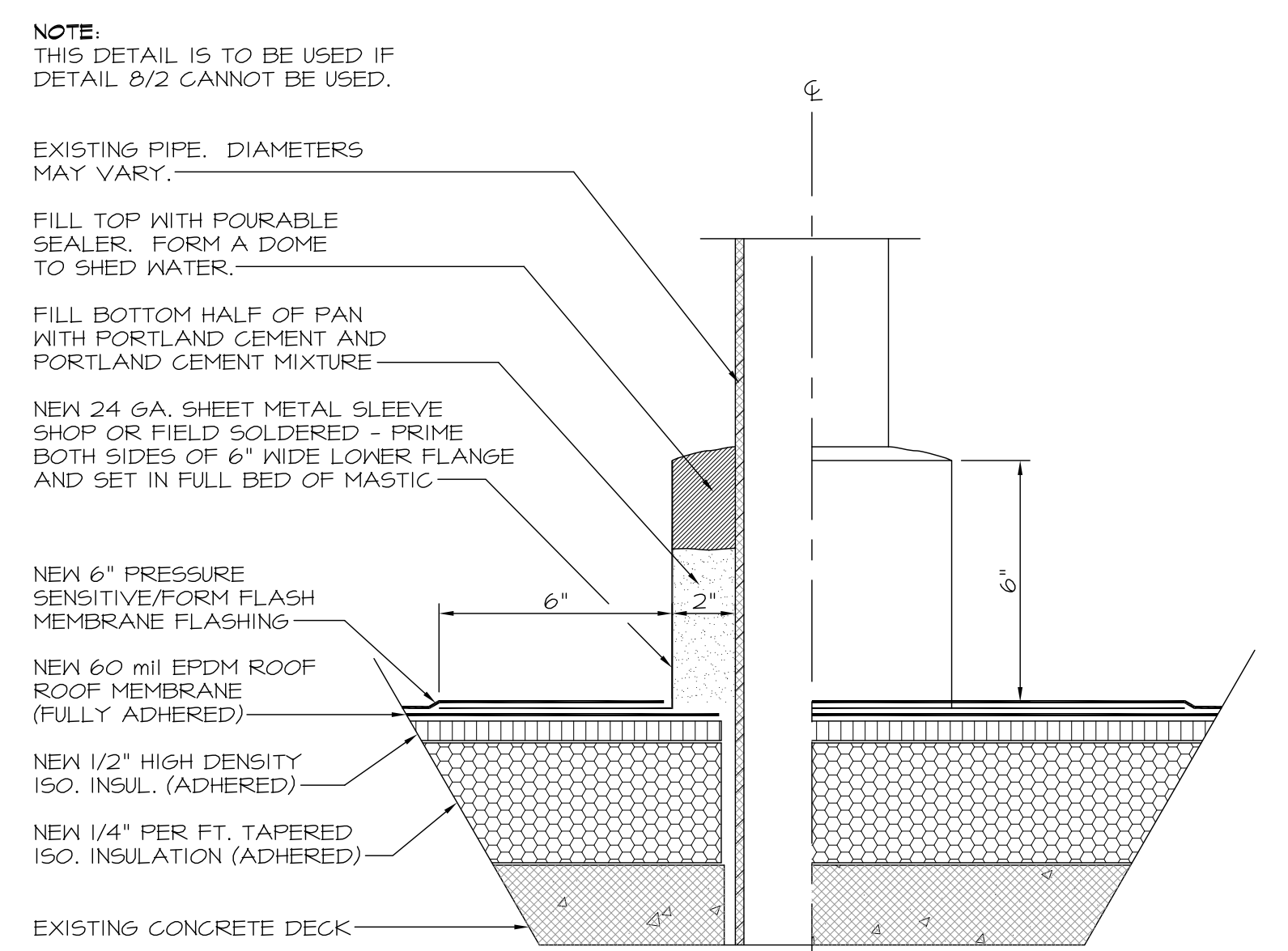
17 STEAM VENT DETAIL
 SCALE: 3"=1'-0" AREA B



18 RADIO EQUIPMENT CURB DETAIL
 SCALE: 3"=1'-0" AREA B



19 PIPE PENETRATION DETAIL
 SCALE: 3"=1'-0" AREA B



20 PIPE PENETRATION DETAIL
 SCALE: 3"=1'-0" AREA B

PROJECT # 190204.00
 SHEET: 3 OF 4

3207 Laura Lane
 Middleton, WI 53562
 608-631-9535

SRI Consultants, Inc.

DATE: 07-21-09
 CHECKED BY: T. CULLITON
 DESIGNED BY: T. CULLITON
 FROM: SRI CONSULTANTS, INC.
 REVISIONS BY:

CITY-COUNTY BUILDING
 210 MARTIN LUTHER KING, JR. BLVD.
 MADISON, WISCONSIN

2008 ROOF REHABILITATION

FOR:

190204-00/CITY-BLDG.DWG

LEGEND:

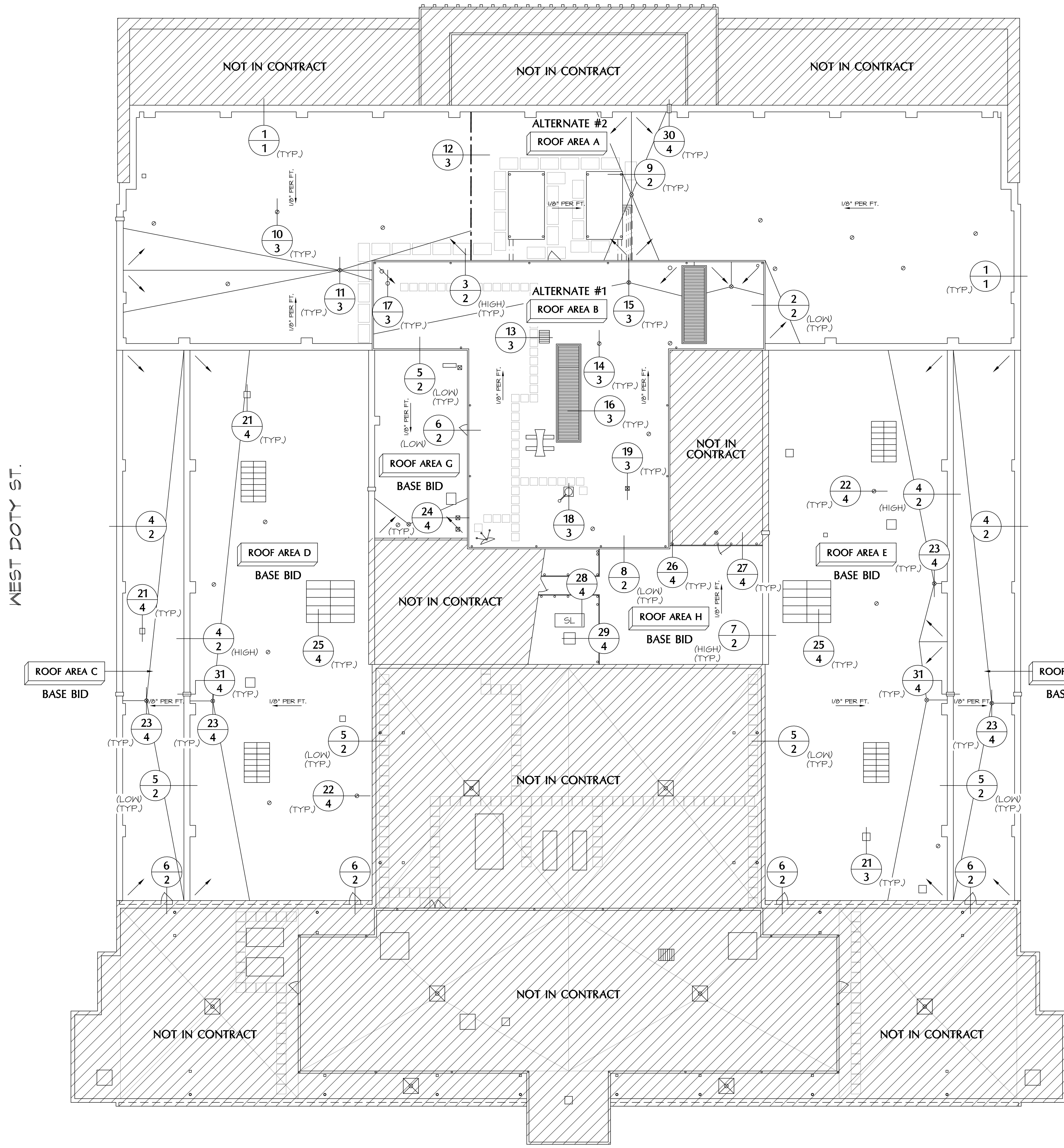
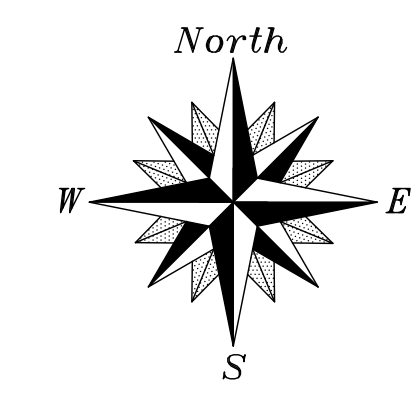
- ROOF DRAIN
- OVERFLOW SCUPPER
- SKYLIGHT
- PLUMBING VENT
- EQUIPMENT CURB
- CHIMNEY STACK
- ▨ SCUTTLE
- PIPE FLASHING
- ⊗ PITCH PAN
- ⊙ RADIO MAST
- ⊕ SIREN ON SLEEPERS
- ⊙ MICROWAVE DISH
- ▨ GRATE
- AREA DIVIDER
- TAPERED INSULATION SLOPE
- STRUCTURAL SLOPE
- ⊙ DESIGN NOTE

GENERAL NOTES:

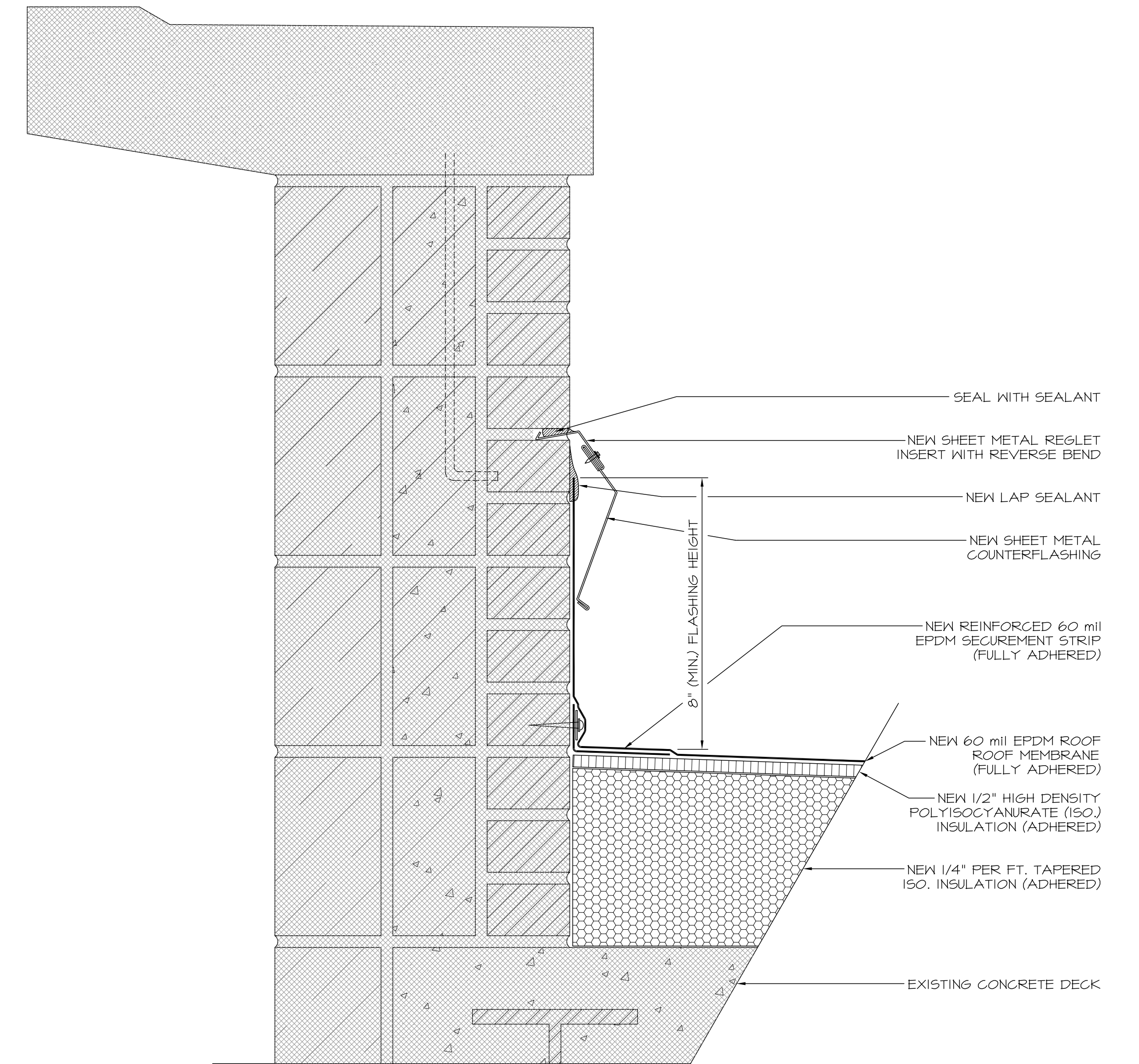
- CONTRACTOR IS RESPONSIBLE FOR THE VERIFICATION OF ALL DIMENSIONS AND EXISTING DETAILS AND CONDITIONS PRIOR TO SUBMITTING BID AND STARTING WORK.
- DETAILS SHOWN REPRESENT EXISTING CONDITIONS TO THE EXTENT KNOWN, WITH THE NEW MATERIALS AND/OR PROCEDURES CALLED OUT.
- CONTINUOUS EPDM SHEETS, WHEREVER SPECIFIED, SHALL BE BONDED AT ALL LAPS.
- INSULATION SHALL BE TAPERED TO DRAIN OPENINGS, ON ALL SIDES FROM ITS CLAMPING RING.
- ALL EXISTING INSULATION SCHEDULED TO REMAIN THAT IS FOUND TO BE WET SHALL BE REPLACED WITH NEW OF EQUAL TYPE AND THICKNESS.
- CONTRACTOR SHALL COORDINATE ALL GAS LINE DISCONNECT AND RECONNECT, PROVIDE NEW GAS LINE SUPPORTS AS REQUIRED W/ MODIFIED SLIP SHEETS AND SHALL VERIFY THAT ALL GAS LINE JOINTS ARE SOUND AT THE END OF CONSTRUCTION.

DESIGN NOTES:

- EXISTING ROOF SYSTEM:
 - ROOF AREA A - BALLASTED EPDM ROOF MEMBRANE, 1/2" WOOD FIBERBOARD INSULATION, 3-3/4" URETHANE INSULATION, 1-3/4" FOAM GLASS, CONCRETE DECK.
 - ROOF AREA B - FULLY ADHERED EPDM ROOF MEMBRANE, 1/2" WOOD FIBERBOARD INSULATION, 1-1/2" URETHANE INSULATION, BUILT-UP ROOF MEMBRANE, LIGHTWEIGHT FILL, CONCRETE DECK.
 - ROOF AREAS C AND F - BALLASTED EPDM ROOF MEMBRANE, 1" PERLITE INSULATION, 2" URETHANE INSULATION, COAL TAR PITCH BUILT-UP ROOF MEMBRANE, LIGHTWEIGHT FILL, CONCRETE DECK.
 - ROOF AREAS D AND E - PAVED EPDM ROOF MEMBRANE, 1/2" PERLITE INSULATION, 2" URETHANE INSULATION, COAL TAR PITCH BUILT-UP ROOF MEMBRANE, LIGHTWEIGHT FILL, CONCRETE DECK.
 - ROOF AREA G - BALLASTED EPDM ROOF MEMBRANE, 1/2" PERLITE INSULATION, COAL TAR PITCH BUILT-UP ROOF MEMBRANE, LIGHTWEIGHT FILL, CONCRETE DECK.
 - ROOF AREA H - PAVED EPDM ROOF MEMBRANE, 1/2" PERLITE INSULATION, COAL TAR PITCH BUILT-UP ROOF MEMBRANE, LIGHTWEIGHT FILL, CONCRETE DECK.



ROOF PLAN
SCALE: 1/16"=1'-0"



1 PARAPET FLASHING DETAIL
SCALE: 3/8"=1'-0" AREA A

PROJECT # 13B291.00
SHEET: 1 OF 4

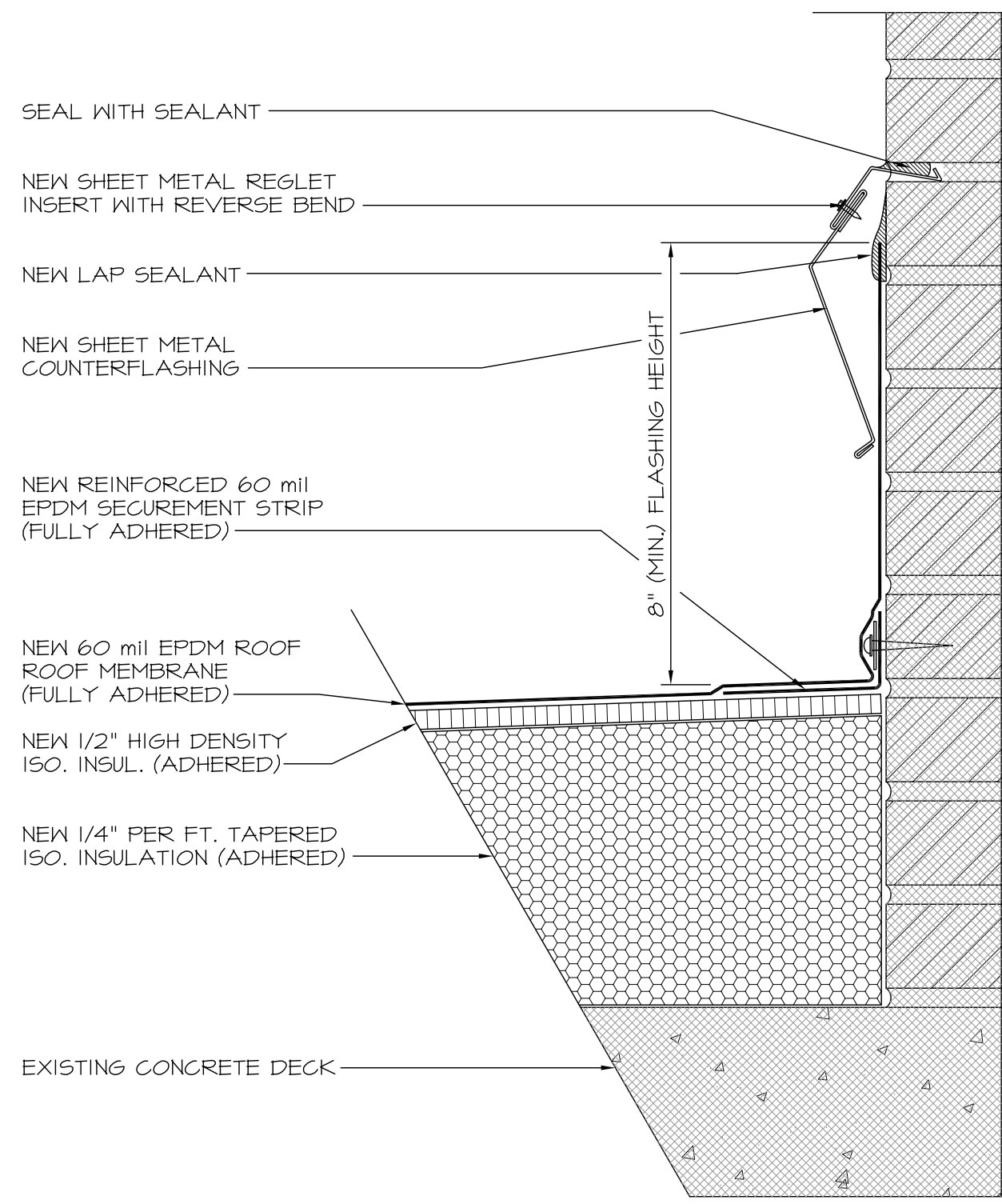
3207 Laura Lane
Middleton, WI 53562
608-631-9533

SRI Consultants, Inc.

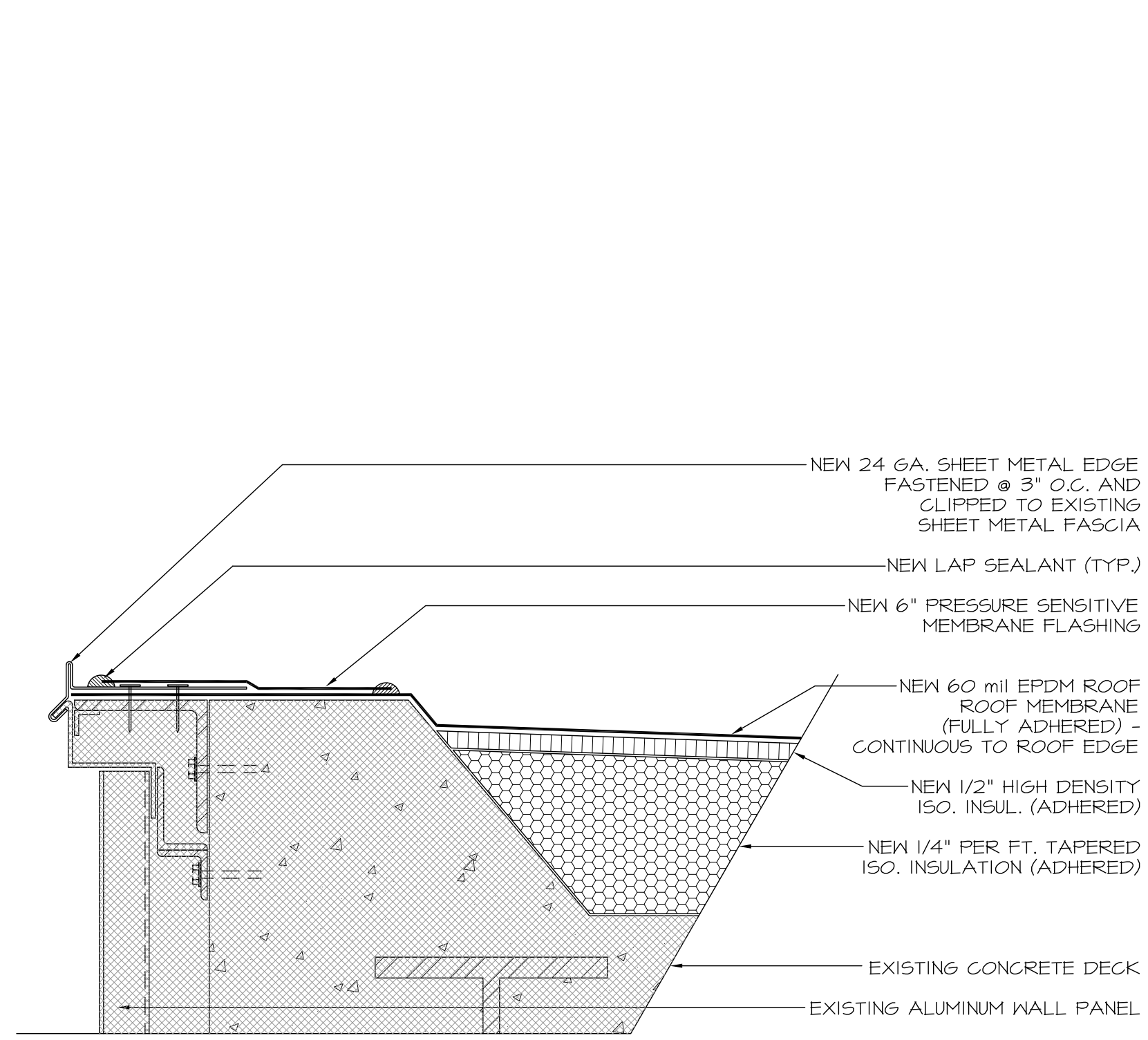
FOR: CITY-COUNTY BUILDING
210 MARTIN LUTHER KING, JR. BLVD.
MADISON, WISCONSIN
2009 ROOF REHABILITATION

DESIGNED BY: T. CULLITON
CHECKED BY: SRI CONSULTANTS, INC.
DATE: 07-21-09

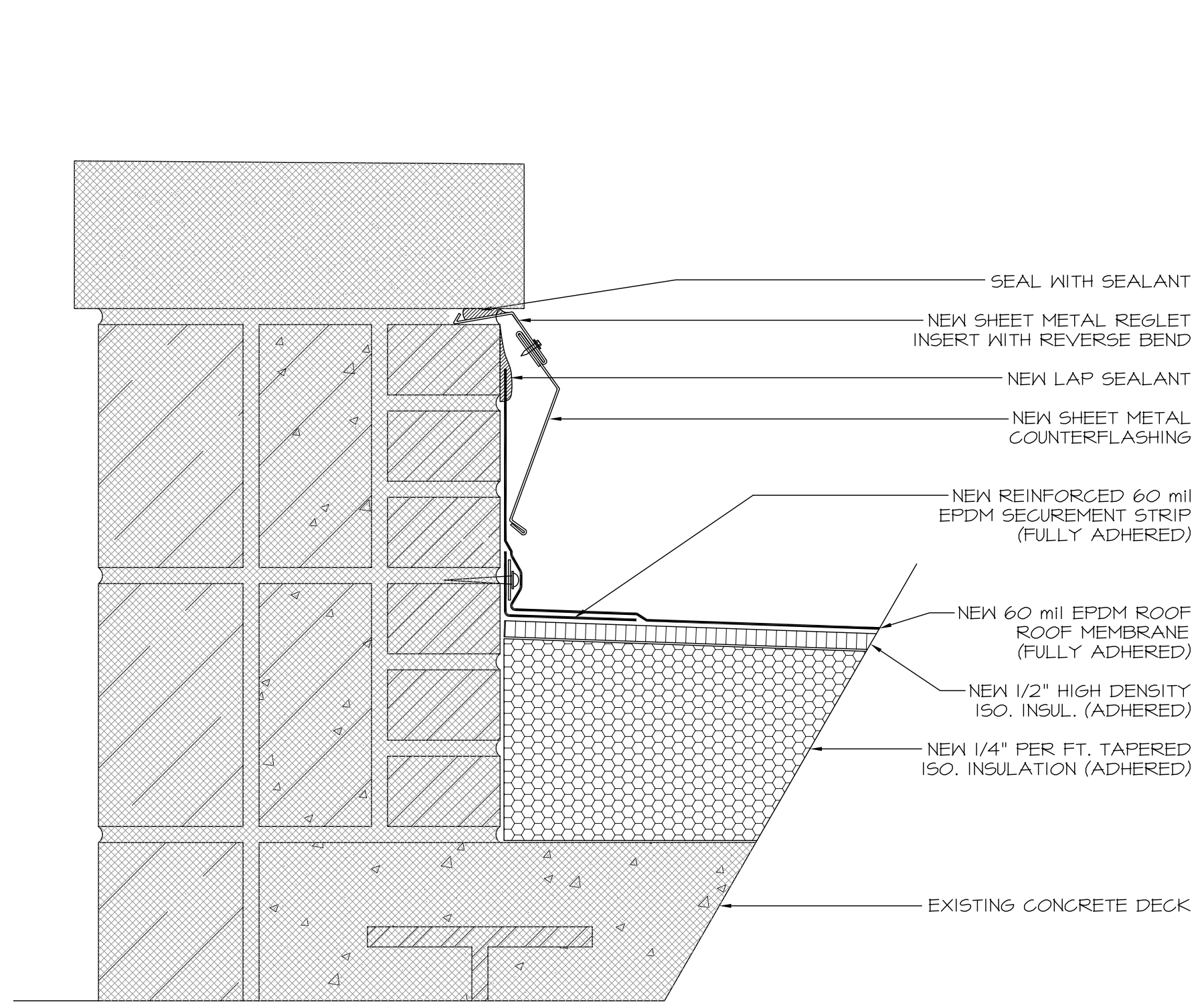
FROM:



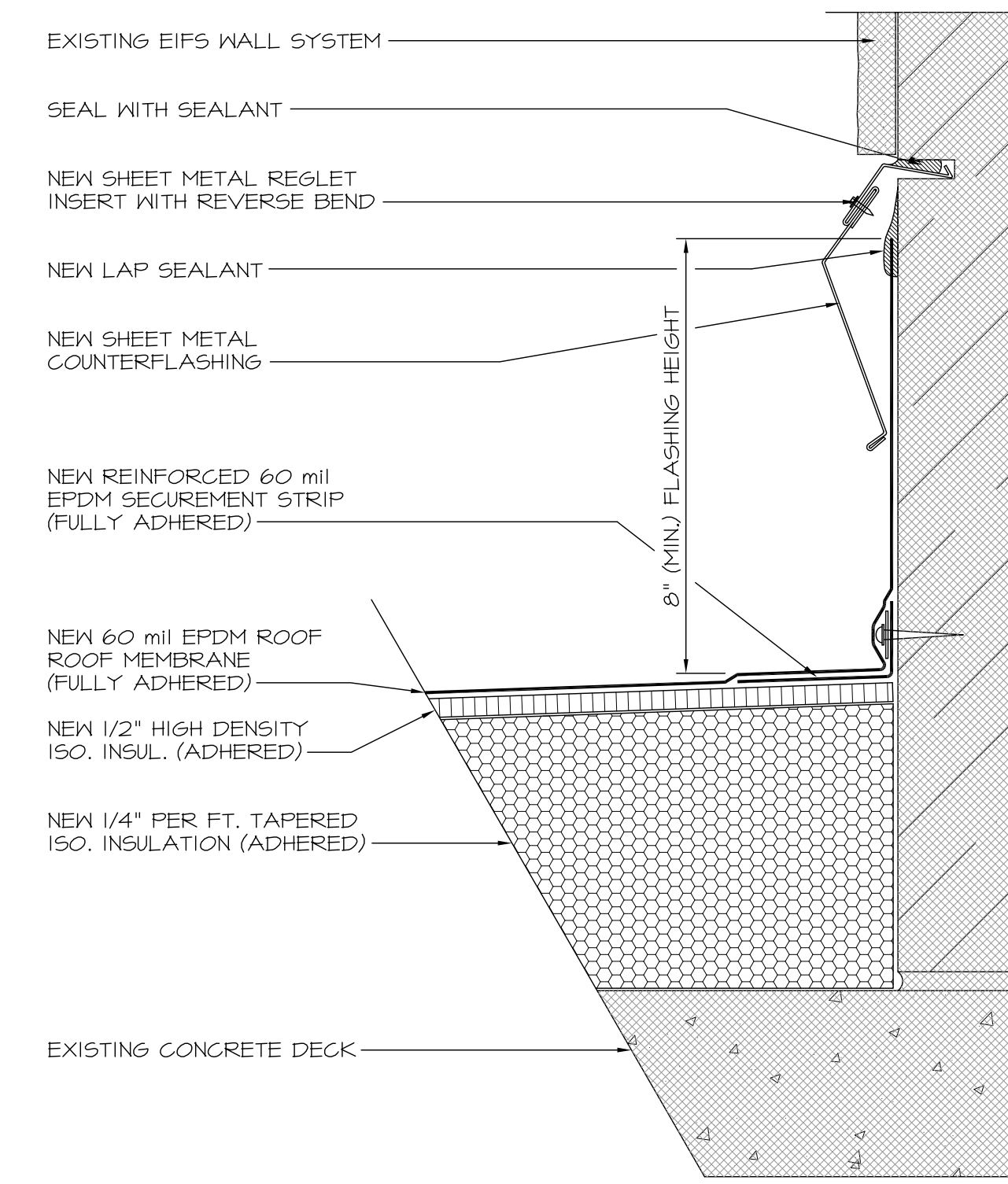
2 WALL FLASHING DETAIL
SCALE: 3"=1'-0"
AREA A



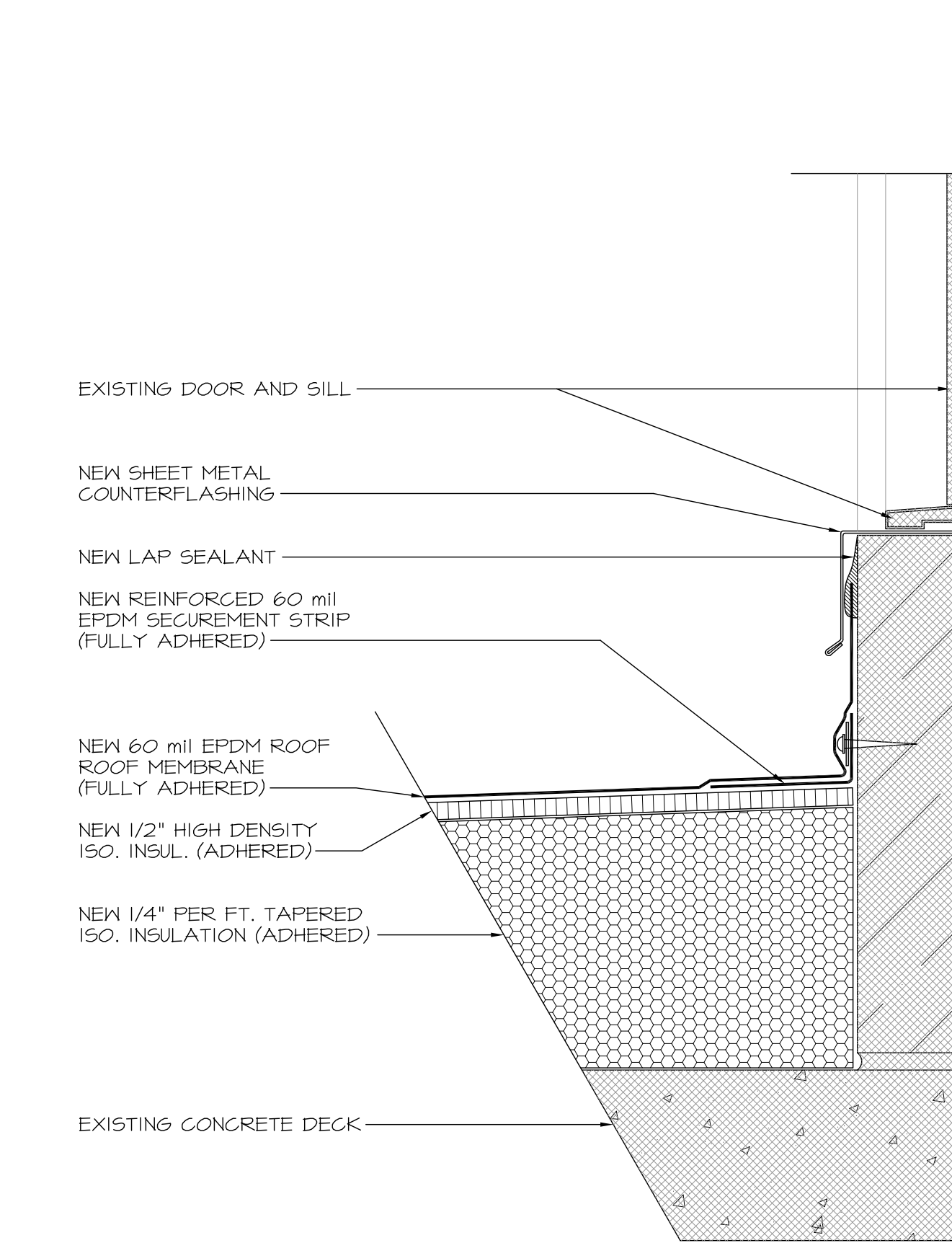
3 EDGE FLASHING DETAIL
SCALE: 3"=1'-0"
AREA B



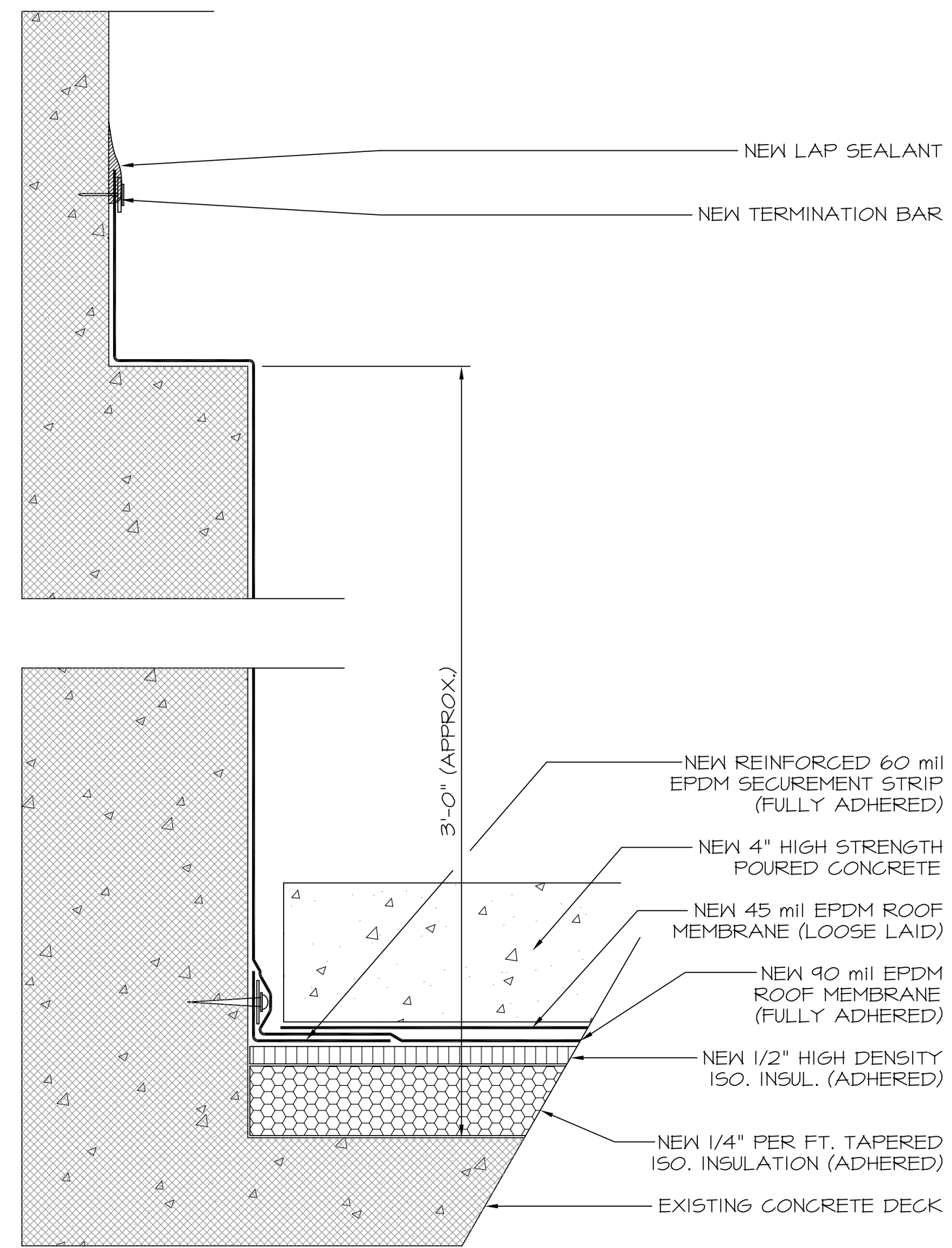
4 PARAPET FLASHING DETAIL
SCALE: 3"=1'-0"
AREAS C, D, E, F, AND G



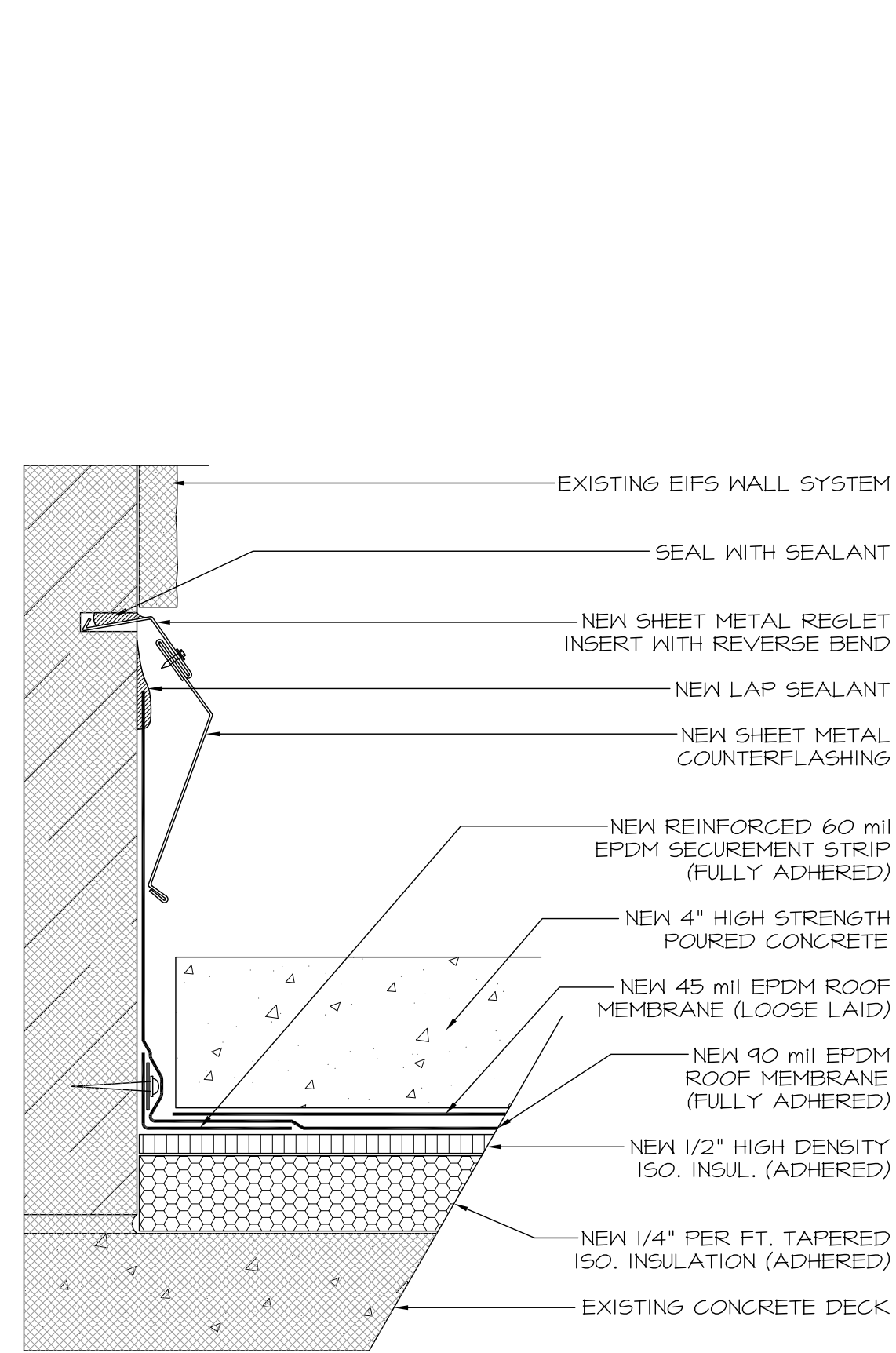
5 WALL FLASHING DETAIL
SCALE: 3"=1'-0"
AREAS C, D, E, F, AND G



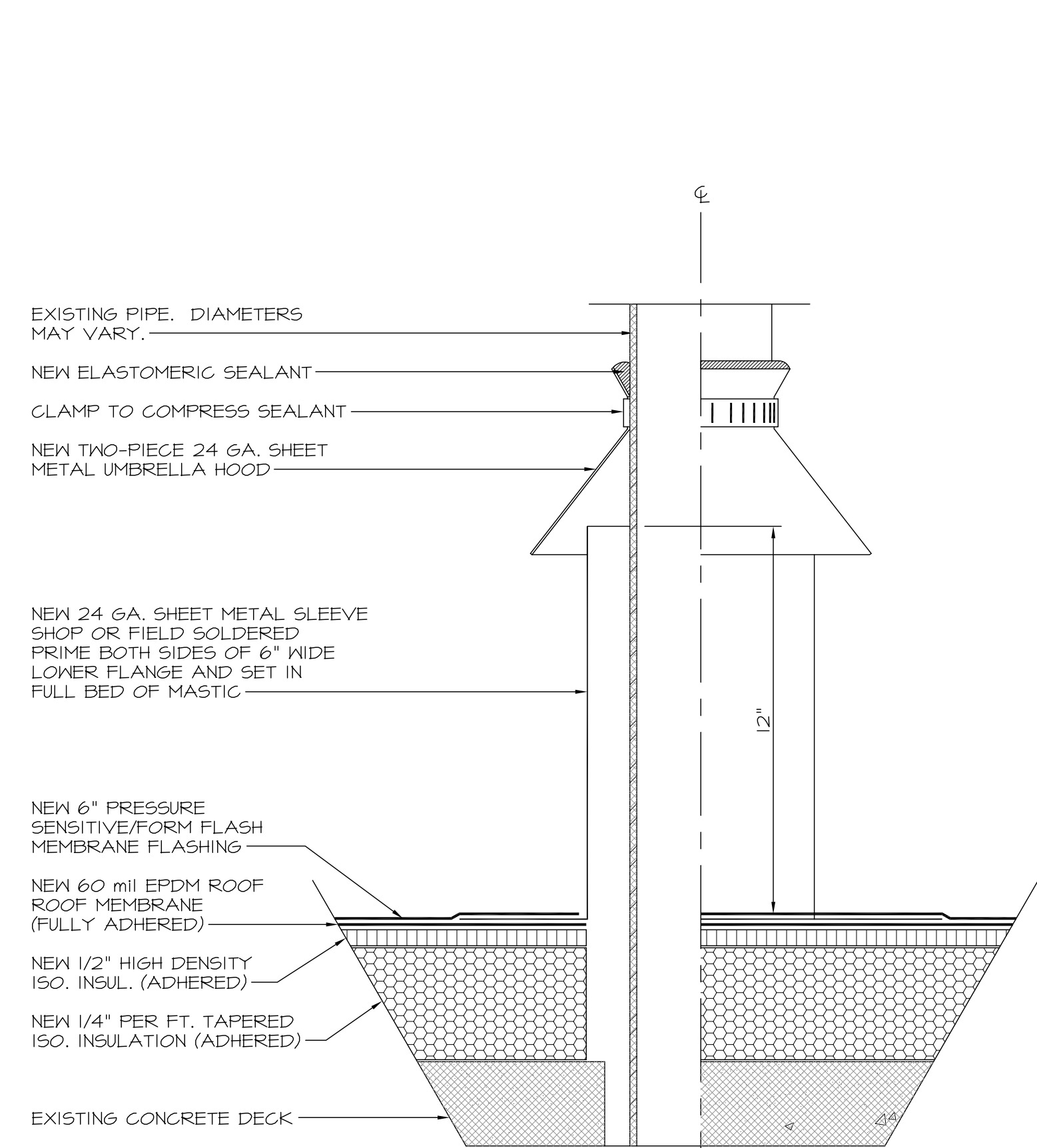
6 DOOR THRESHOLD DETAIL
SCALE: 3"=1'-0"
AREAS C, D, E, F, AND G



7 WALL FLASHING DETAIL
SCALE: 3"=1'-0"
AREA H



8 WALL FLASHING DETAIL
SCALE: 3"=1'-0"
AREA H



9 PIPE SUPPORT DETAIL
SCALE: 3"=1'-0"
AREA A

PROJECT # 130224.00
SHEET: **2** OF 4

3207 Laura Lane
Middleton, WI 53562
608-631-9533

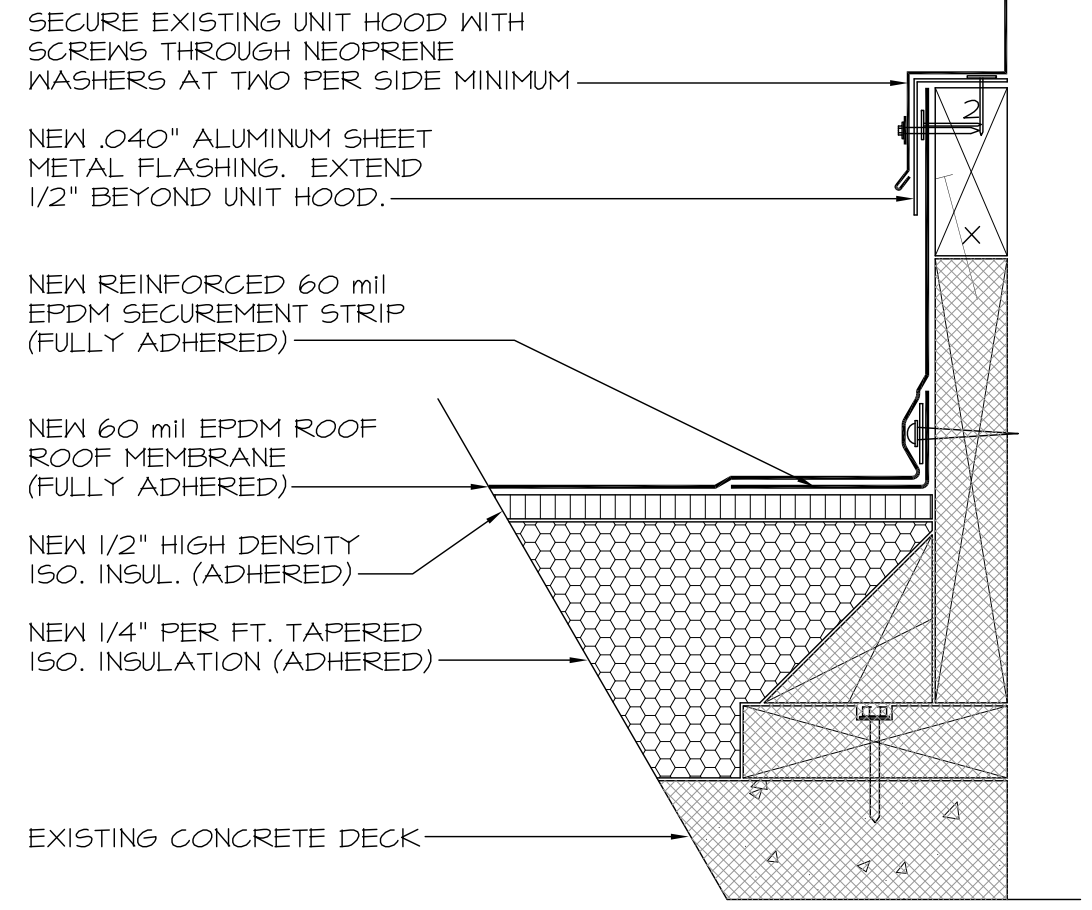
SRI
SRI Consultants, Inc.

DATE: 07-21-09
DESIGNED BY: T. CULLITON
CHECKED BY: SRI CONSULTANTS, INC.
REVISED BY:

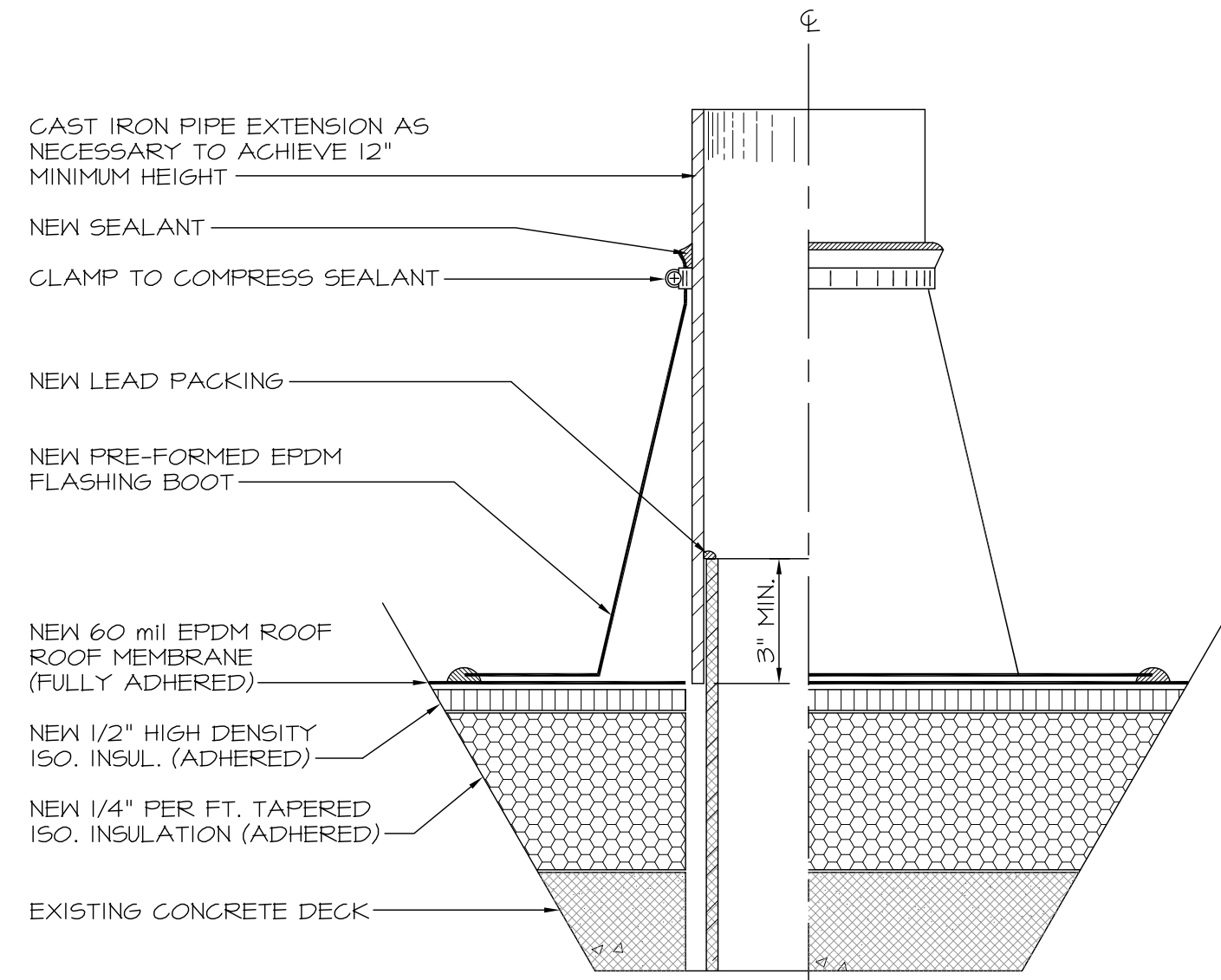
CITY-COUNTY BUILDING
210 MARTIN LUTHER KING, JR. BLVD.
MADISON, WISCONSIN
2008 ROOF REHABILITATION

FOR:

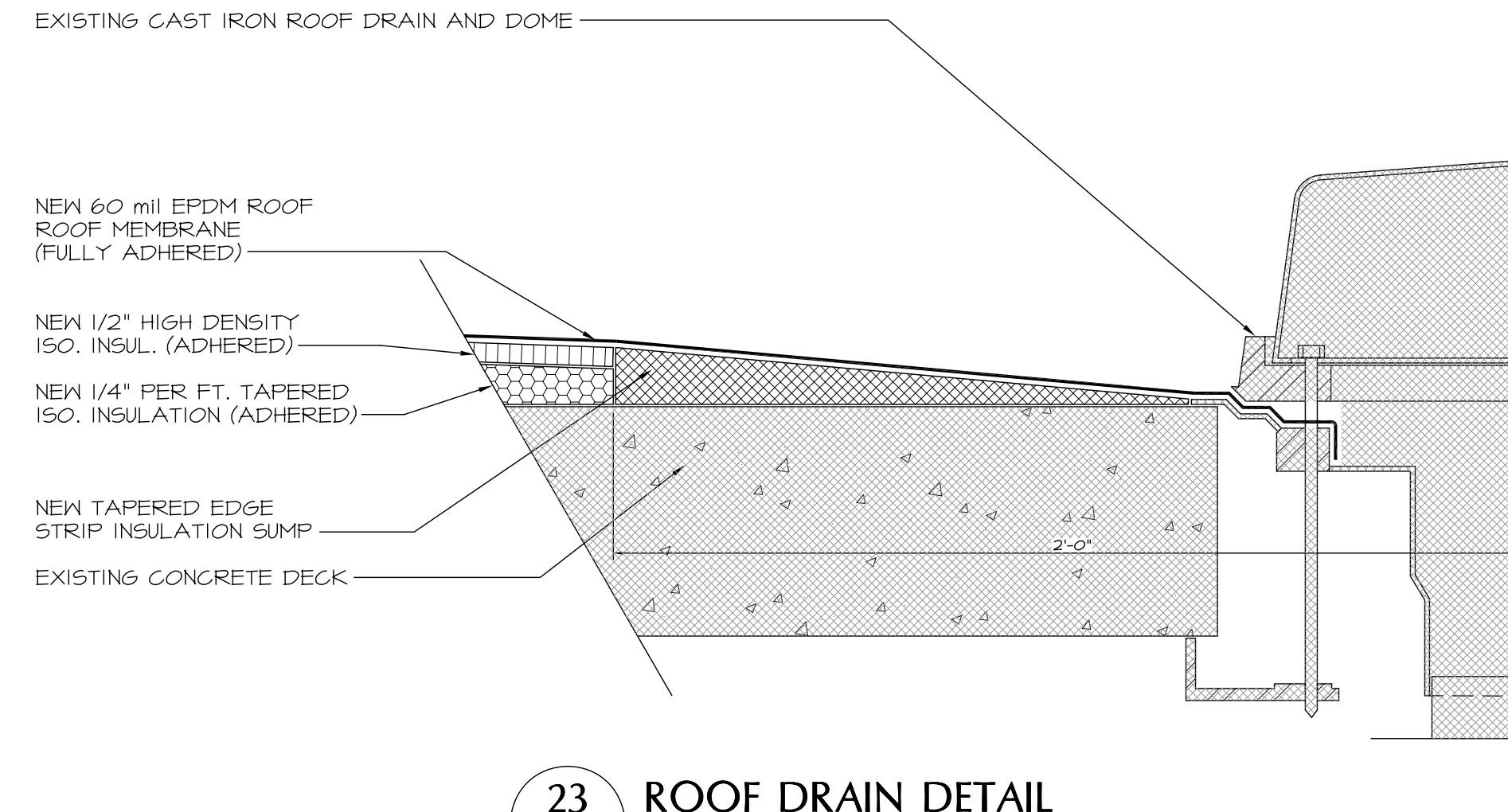
NOTE:
CONTRACTOR TO ADD WOOD BLOCKING AS NECESSARY TO OBTAIN AND MAINTAIN A 8" MINIMUM FLASHING HEIGHT.



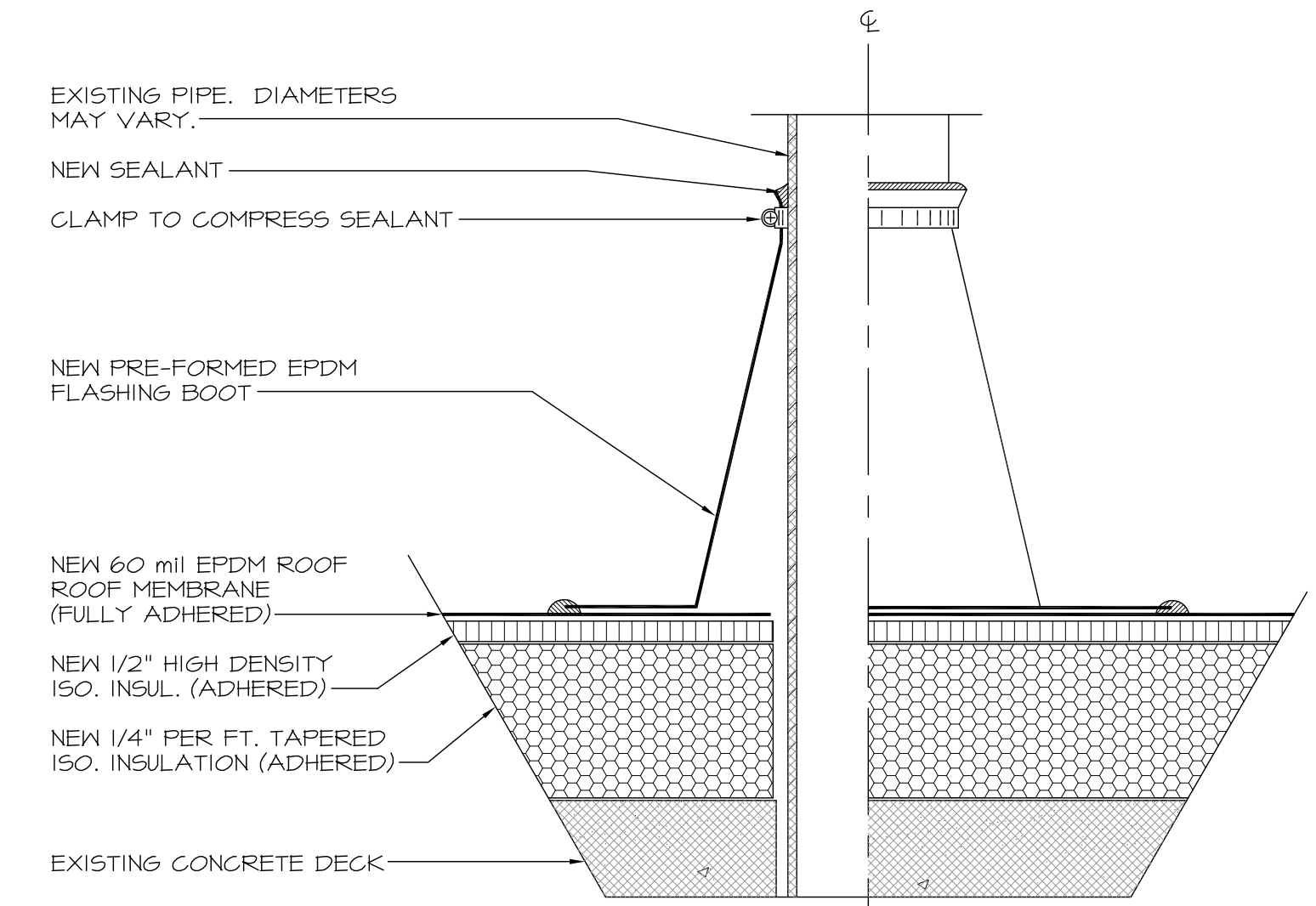
21 EQUIPMENT CURB DETAIL
SCALE: 3"=1'-0" AREAS C, D, E, AND G



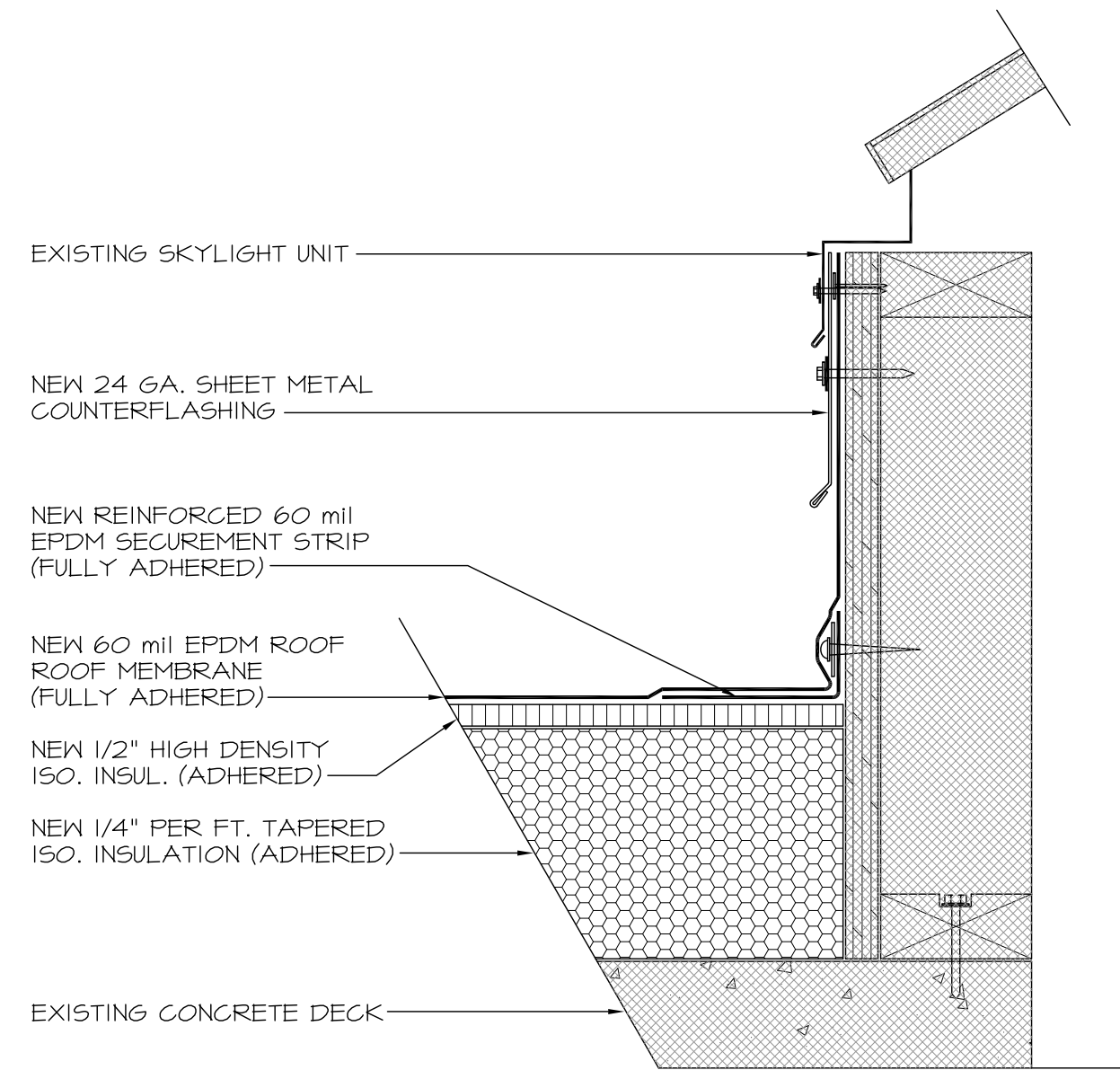
22 PLUMBING VENT DETAIL
SCALE: 3"=1'-0" AREA D, E, AND G



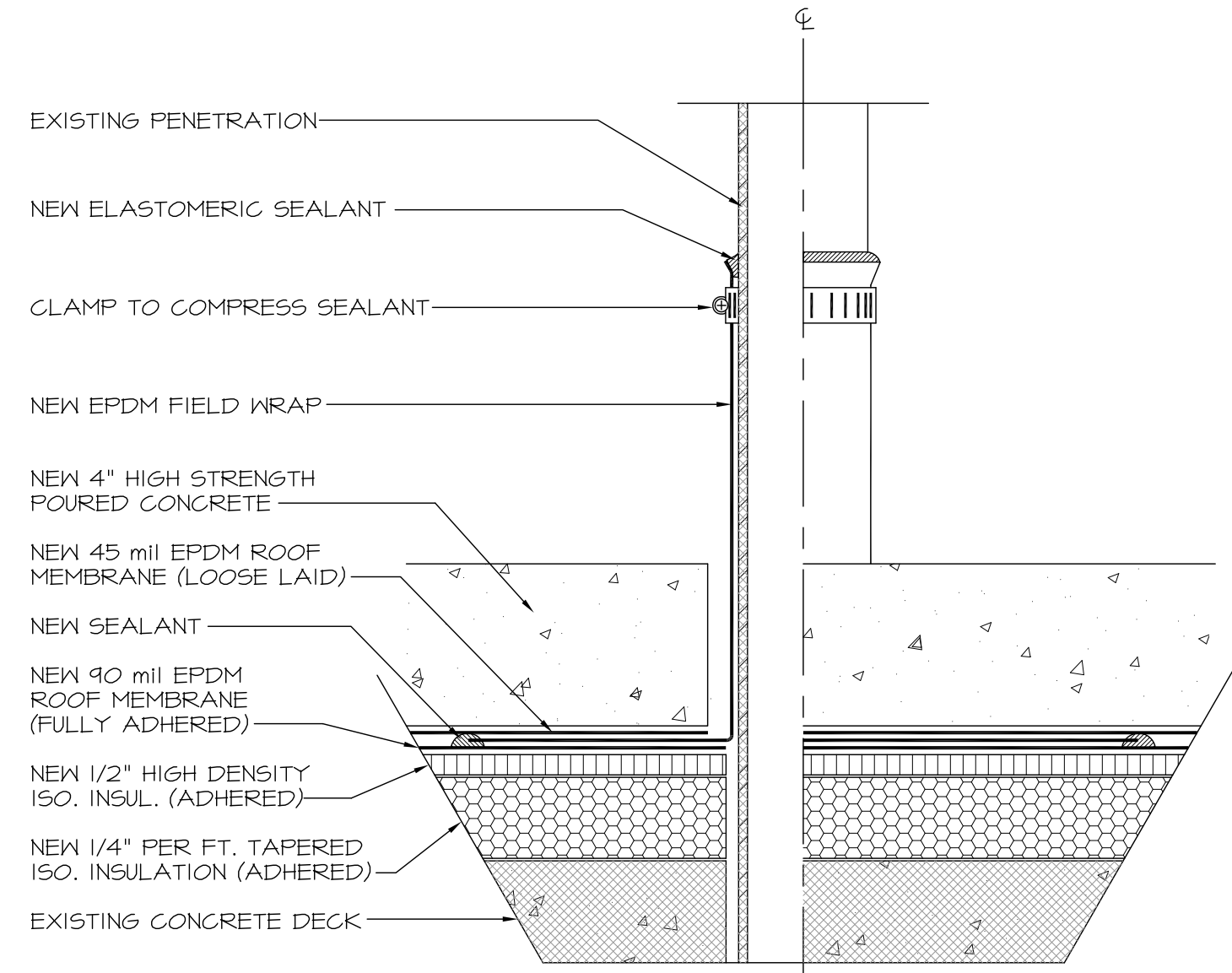
23 ROOF DRAIN DETAIL
SCALE: 3"=1'-0" AREA C, D, E, F, AND G



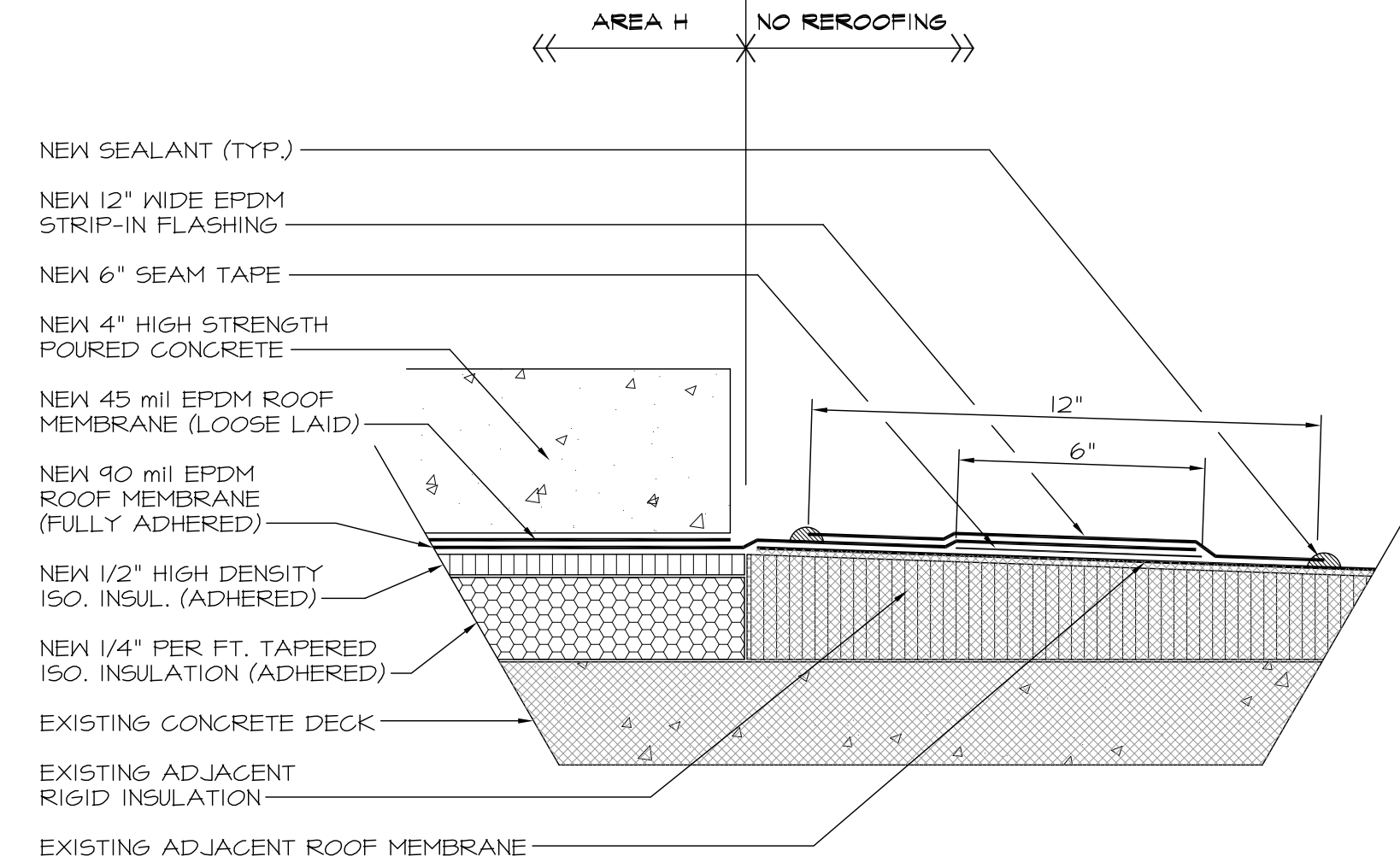
24 PIPE PENETRATION DETAIL
SCALE: 3"=1'-0" AREA G



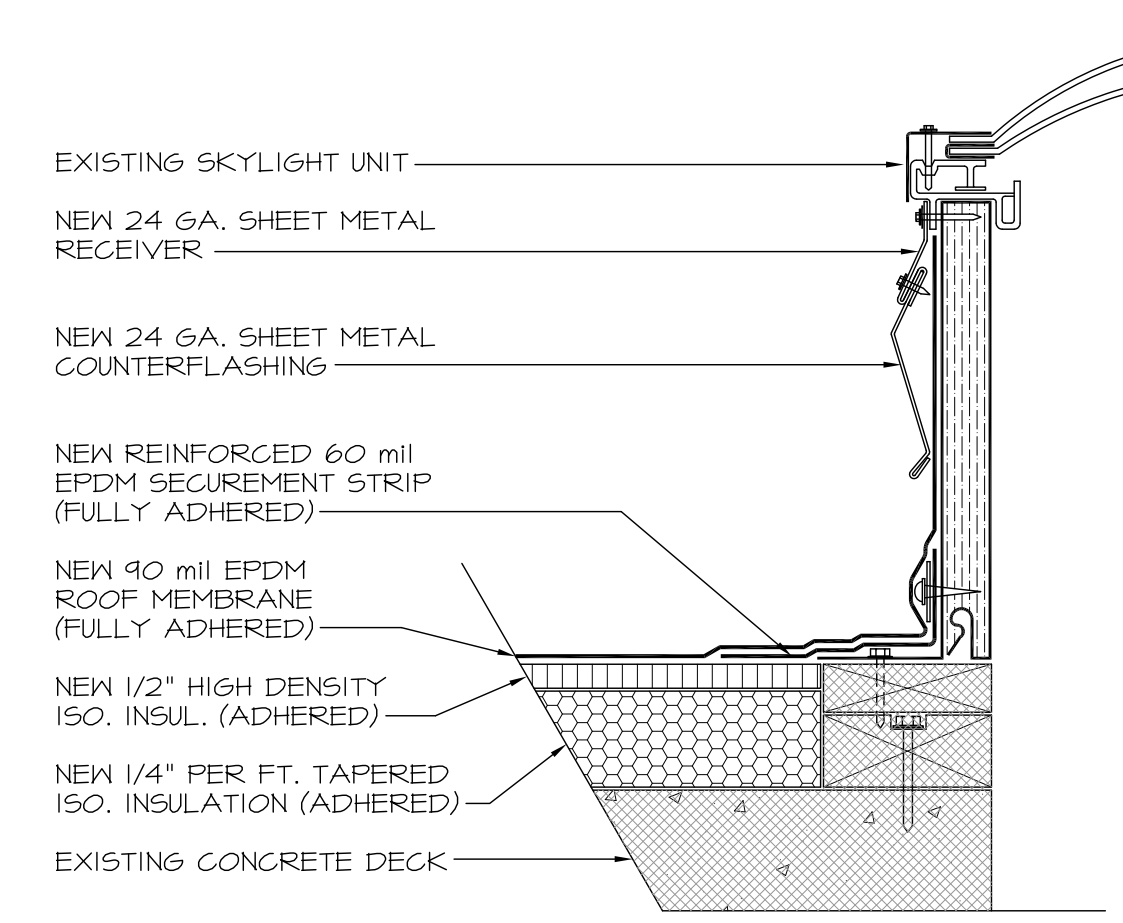
25 SKYLIGHT CURB DETAIL
SCALE: 3"=1'-0" AREAS D AND E



26 FIELD WRAP DETAIL
SCALE: 3"=1'-0" AREA H

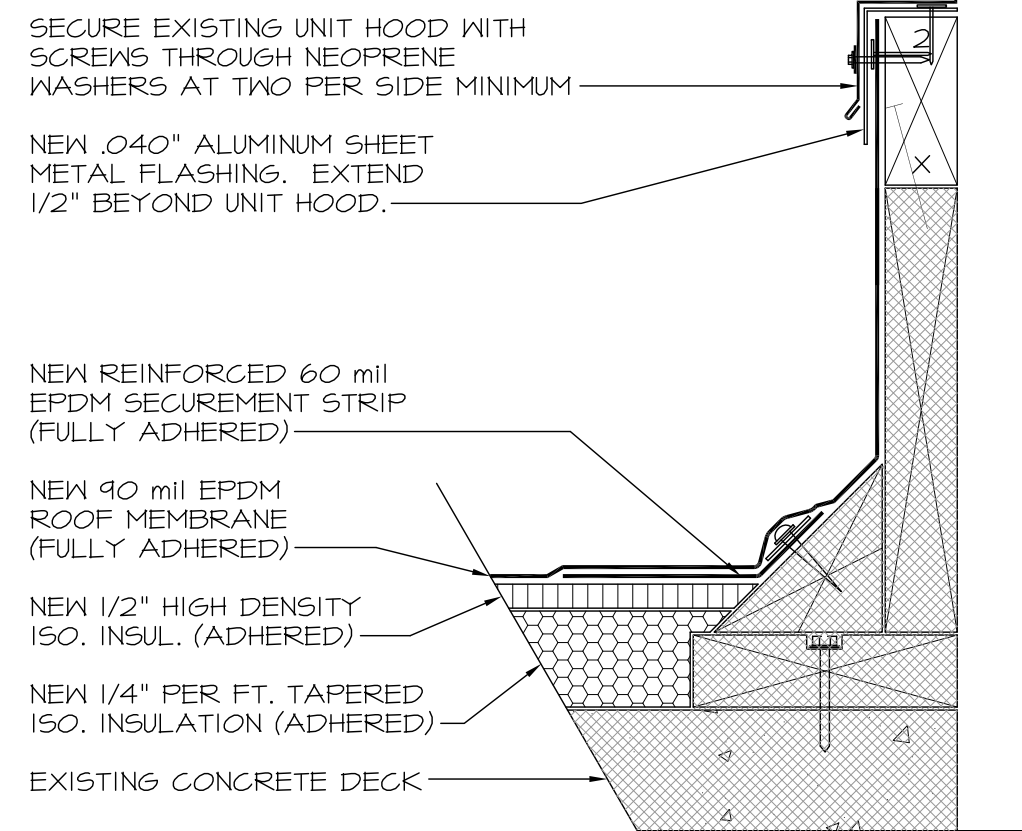


27 TIE-IN FLASHING DETAIL
SCALE: 3"=1'-0" AREA H

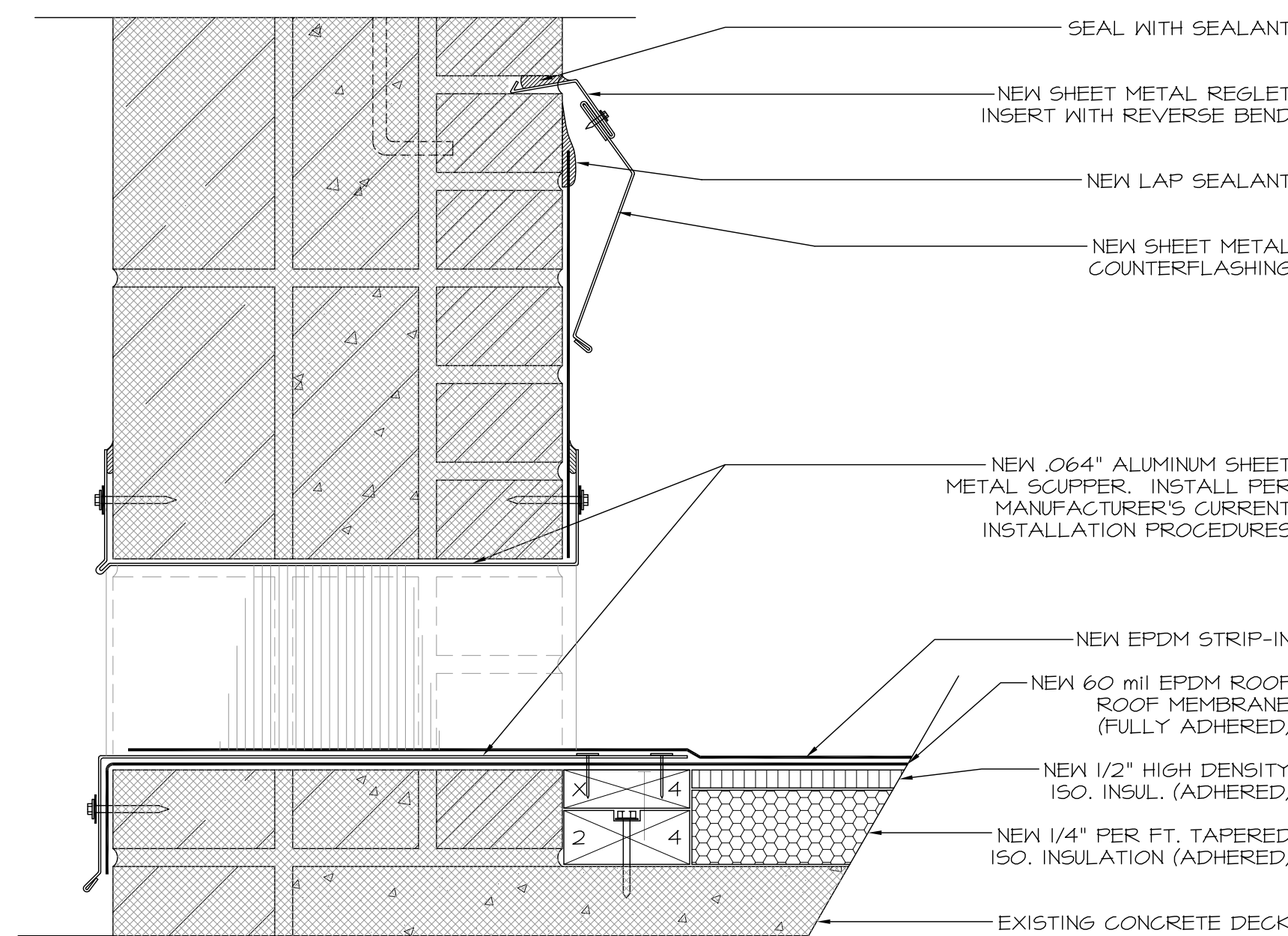


28 SKYLIGHT FLASHING DETAIL
SCALE: 3"=1'-0" AREA H

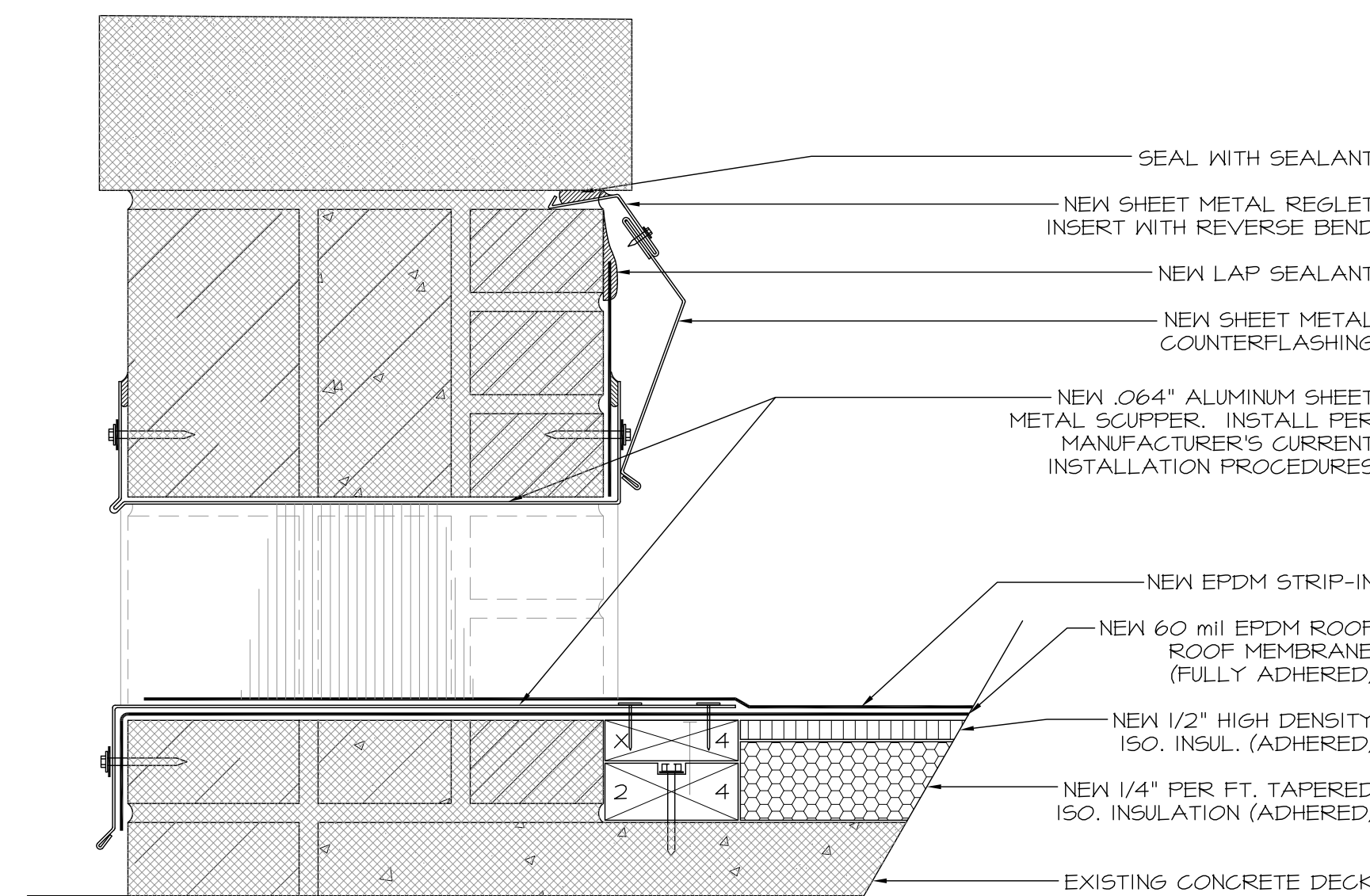
NOTE:
CONTRACTOR TO ADD WOOD BLOCKING AS NECESSARY TO OBTAIN AND MAINTAIN A 8" MINIMUM FLASHING HEIGHT.



29 EQUIPMENT CURB DETAIL
SCALE: 3"=1'-0" AREA H



30 OVERFLOW SCUPPER DETAIL
SCALE: 3"=1'-0" AREA A



31 OVERFLOW SCUPPER DETAIL
SCALE: 3"=1'-0" AREAS C, D, E, F, AND G

130224-00/CITY-BLDGOLDING

PROJECT # 130224-00
SHEET: 4 OF 4

3207 Laura Lane
Middleton, WI 53562
608-631-9533

SRI Consultants, Inc.

FOR: CITY-COUNTY BUILDING
210 MARTIN LUTHER KING, JR. BLVD.
MADISON, WISCONSIN
2008 ROOF REHABILITATION

DESIGNED BY: SRI CONSULTANTS, INC.
CHECKED BY: T. CULLITON
DATE: 07-21-09
FROM:

Copyright © SRI Consultants, Inc.