



DANE COUNTY DEPARTMENT of PUBLIC WORKS, HIGHWAY and TRANSPORTATION

County Executive
Joseph T. Parisi

1919 Alliant Energy Center Way ♦ Madison, Wisconsin 53713
Phone: (608) 266-4018 ♦ Fax: (608) 267-1533

Commissioner / Director
Gerald J. Mandli

May 13, 2015

ATTENTION ALL REQUEST FOR BID (RFB) HOLDERS

RFB NO. 315028 - ADDENDUM NO. 1

FEN OAK SECOND FLOOR RENOVATIONS

LYMAN F. ANDERSON AGRICULTURE & CONSERVATION CENTER

BIDS DUE: TUESDAY, MAY 19, 2015, 2:00 PM. DUE DATE AND TIME ARE NOT CHANGED BY THIS ADDENDUM.

This Addendum is issued to modify, explain or clarify the original Request for Bid (RFB) and is hereby made a part of the RFB. Please attach this Addendum to the RFB.

PLEASE MAKE THE FOLLOWING CHANGES:

CHANGES TO SPECIFICATIONS

1. Section 27 10 00 Structured Cabling

- a. Page 5 – Revise paragraph under “VOICE TERMINATION FIELD” to read as follows:

“Configuration for Backbone Cabling:

The Voice Termination will consist of the AT&T Demarcation Point that is located in the First Floor Data Closet. This contractor shall extend a 50-pair Cat 3 cable from the Demarcation to a new Voice Termination Field located in Server Room 230 and a 25-pair Cat 3 cable from the Demarcation to a new Voice Termination Field located in Server Room 239. The contractor shall coordinate with the Agency IT personnel and AT&T for the cutover of the existing lines.”

2. Section 27 10 00 Structured Cabling

- b. Page 6 – Revise paragraph under “Modular-to-110 Patch Cord” to read as follows:

“Construction:

24 AWG stranded copper twisted pairs.

Unshielded (UTP)

8-Position, 8-Conductor (8P8C) Modular Plug at one end and 110-type connector at other end. 110-type connector with one pair for connecting fax and modem.

Provide a quantity of 10 patch cords in Room 239.”

CHANGES TO DRAWINGS

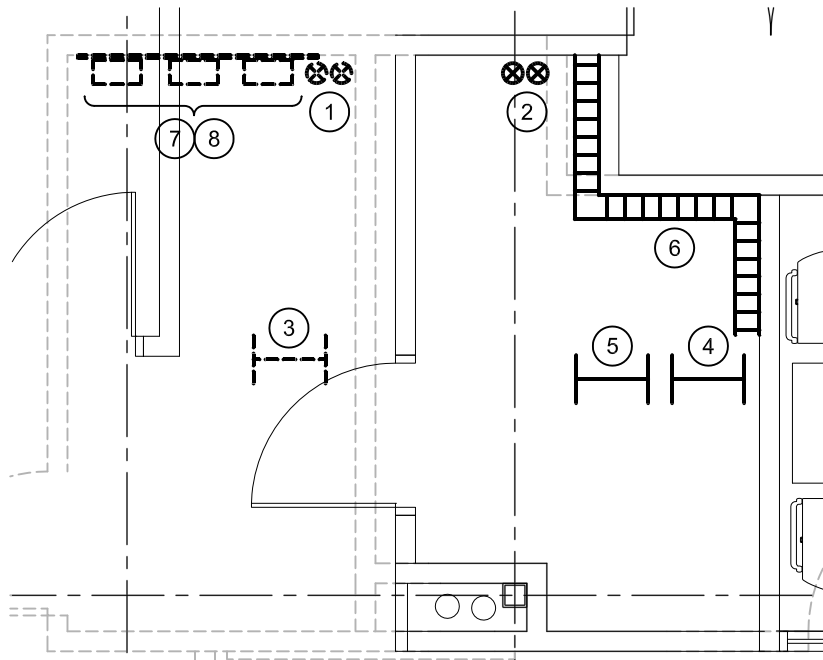
3. **SHEET A2.0 First Floor Plan**
 - a. Revise note in Conference Room 114 to read Max Occupancy 49. Signage by Owner.
 - b. Add General Note: approximate existing floor to floor height 14'-0".
4. **SHEET A2.1 Second Floor Plan**
 - a. Add General Note: approximate existing floor to floor height 14'-0".
 - b. Add note at Room 226 northwest corner: "Partition Type B or 6" studs where wall returns to typical Partition Type and aluminum frame. The additional nominal 2" wall thickness and edge bead is to provide transition for accent paint color."
5. **SHEET A7.0 Door & Frame Elevations, Partition Types, Details & Schedule**
 - a. 1/A7.0 Partition Types, Partition Type C add note: "At the ends of each partial height wall provide 3" schedule 40 steel pipe and steel plate for stability of partial height walls with 6"x 3 5/8" x 1/4" steel plate welded to base and anchored to existing floor."
6. **SHEET E1.1**
 - a. Detail 1/E1.1: Add Keyed Note 4 to two dashed data symbols. Keyed Note 4 to read: "Existing communications outlet to be relocated. Existing communications cable to be reused. Label and test per specifications."
7. **SHEET E1.2**
 - a. Detail 1/E1.2: Revise Keyed Note 3 to read: "Existing communications cabling feeding devices in areas not included in remodeled spaces shall be rerouted as indicated on Detail 8/E9.0. This includes approximately 120 cables."
 - b. Detail 1/E1.2: Revise Keyed Note 4 to read: "Disconnect existing cables routed to Room 230 from communications outlet at this location. Cable to be labeled with unique identifier and remain in place for future use. Provide blank plate in unused space. Any cables routed to Room 239 to remain in service."
8. **SHEET E9.0**
 - a. Detail 6/E9.0: Add the following to Keyed Note 1: "Label with unique identifier at each cable end."
 - b. Detail 6/E9.0: Revise Keyed Note 2 to read: "50 pair Cat 3 cable from AT&T demarcation to new rack mount 110 block in Room 230. Mount 110 block in existing rack."
 - c. Detail 6/E9.0: Revise Keyed Note 3 to read: "25 pair Cat 3 cable from AT&T demarcation to new rack mount 110 block in Room 239. Mount 110 block in new rack."
 - d. Detail 8/E9.0: Add Detail 8/E9.0, attached (Supplemental Drawing E9.0 AD1).

If any additional information about this Addendum is needed, please call Eric Urtes, AIA at 608/266-4798, urtes.eric@countyofdane.com, or Rob Nebel, Assistant Public Works Director at 267-0119, nebel@countyofdane.com

Sincerely,
Eric Urtes, AIA
Project Manager

Enclosures:
Supplemental Drawing E9.0 AD1, Detail 8/E9.0:

G:\My Documents\SWC Files\updated PW forms\1-JS approved-done & in use\Addendum 04-14-12.doc



8
E9.0

DATA ROOM 239 - ENLARGED FLOOR PLAN

SCALE: 1/4"=1'-0"

GENERAL NOTE:


THIS DETAIL SHOWS THE NEW FLOOR PLAN OVERLAID ON THE DEMOLITION FLOOR PLAN. DASHED LINES REPRESENT ITEMS TO BE DEMOLISHED, REMOVED, OR RELOCATED. SOLID LINES REPRESENT WORK THAT IS NEW OR EXISTING TO REMAIN, UNLESS NOTED OTHERWISE.

PHASING NOTES:

1. DISCONNECT EXISTING CABLING FROM PATCH PANEL AND CAREFULLY PULL BACK.
2. REROUTE CABLING THROUGH NEW CORE HOLES TO NEW DATA RACK (4).
3. TERMINATE RELOCATED CABLES. LABEL PER SPEC. 27 05 53. TEST PER SPEC. 27 10 00.

KEYED NOTES:

- (1) EXISTING CORE HOLES
- (2) NEW CORE HOLES
- (3) EXISTING DATA RACK TO BE RELOCATED
- (4) NEW 19" RACK
- (5) RELOCATED DATA RACK (3)
- (6) 6" WALL MOUNT CABLE TRAY
- (7) PHONE SYSTEM TO BE RELOCATED BY OWNER'S CONTRACTOR
- (8) VOICE CABLING TO BE REMOVED AFTER CUTOVER.

 JDR ENGINEERING, INC. 5525 NOBEL DRIVE SUITE 110 MADISON, WI 53711 ph:608.277.1728 fax:608.271.7046	Project Title:	Fen Oak Second Floor Renovations	
	Project Location:	5201 Fen Oak Drive Madison, WI #315028	
	Reference Sheet:		
	Sheet Title:		
	Project Number	150045	
	Set Type	ADD	
	Date Issued	05/12/15	
	Sheet Number	E9.0 AD1	