

# DANE COUNTY HIGHWAY GARAGE BREAK ROOM AND CONFERENCE ROOM ALTERATIONS 2302 FISH HATCHERY ROAD MADISON, WISCONSIN 53713

## ABBREVIATIONS

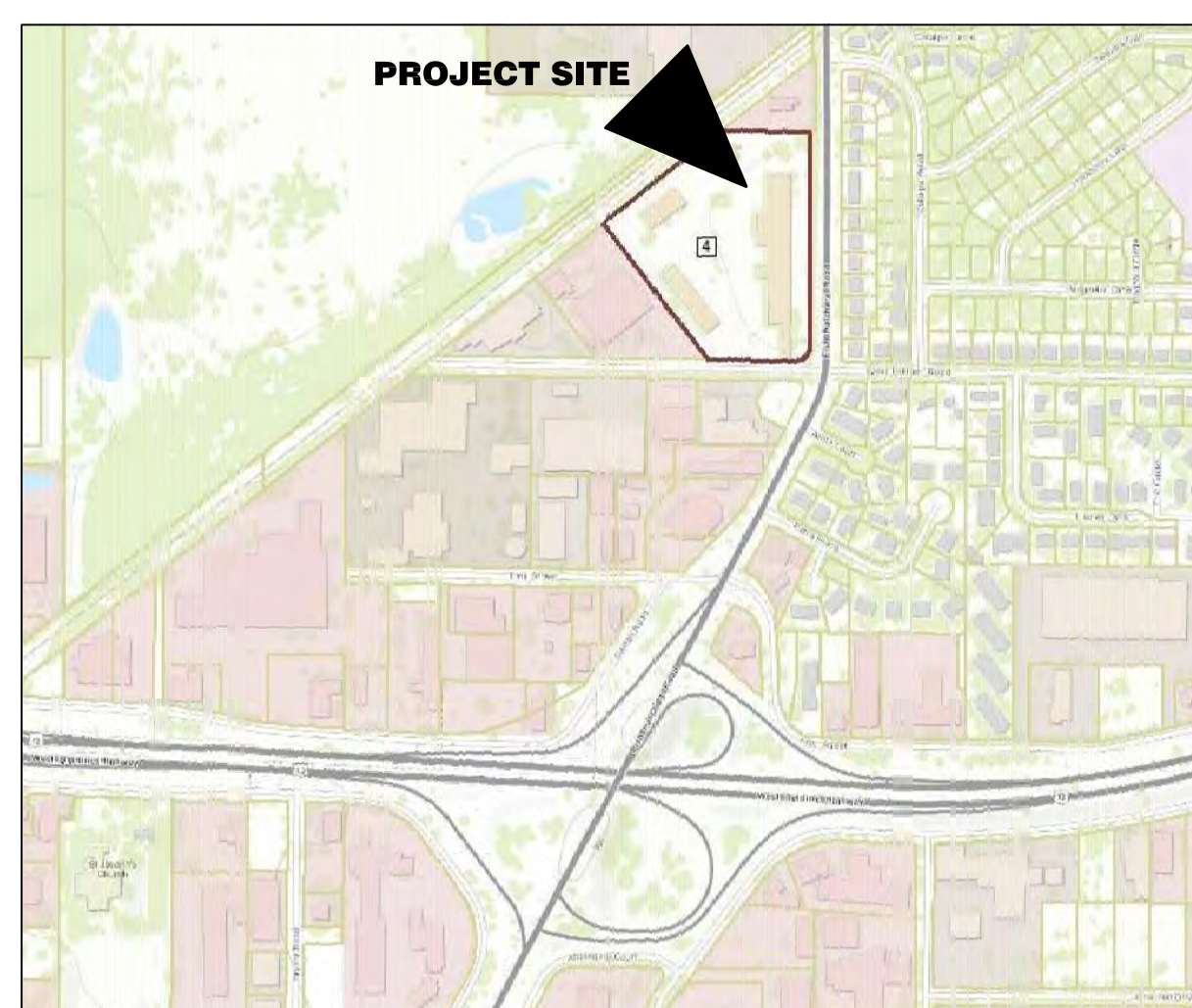
ADA	AMERICANS WITH DISABILITIES ACT
A.F.F.	ABOVE FINISHED FLOOR
AL	ALUMINUM
AP	ACCESS PANEL
CG	CORNER GUARD
CJ	CONTROL JOINT
CMU	CONCRETE MASONRY UNIT
CONC	CONCRETE
CPT	CARPET
CT	CERAMIC TILE
CUH	CABINET UNIT HEATER
EJ	EXPANSION JOINT
EWC	ELECTRIC WATER COOLER
FD	FLOOR DRAIN
FO	FOUNDATION DRAIN SYSTEM FLUSHOUT
FRT	FIRE TREATED
FX-#	FIRE EXTINGUISHER AND TYPE
GWB	GYPSUM WALL BOARD
HM	HOLLOW METAL
MB	MARKER BOARD
TB	TACK BOARD
BB	BULLETIN BOARD
M.O.	MASONRY OPENING
N.I.C.	NOT IN CONTRACT
O.F.C.I.	OWNER FURNISHED CONTRACTOR INSTALLED
O.F.O.I.	OWNER FURNISHED OWNER INSTALLED
OPP	OPPOSITE
P.LAM.	PLASTIC LAMINATE
REV	REVERSE
R.O.	ROUGH OPENING
S.S.	STAINLESS STEEL
TZO	TERRAZZO
U.N.O.	UNLESS NOTED OTHERWISE
VCT	VINYL COMPOSITION TILE
WD	WOOD
WP	WATER PROOFING
WPT	WORK POINT

## INDEX OF DRAWINGS

<u>GENERAL</u>	
G100	COVER SHEET AND INDEX OF DRAWINGS
<u>ARCHITECTURAL</u>	
A200	FIRST FLOOR PLAN, RCP AND DETAILS
<u>PLUMBING</u>	
P100	FLOOR PLAN PLUMBING ALTERATIONS
P200	PLUMBING SPECIFICATIONS
<u>HVAC</u>	
M100	FIRST FLOOR PLAN - HVAC NEW WORK AND DEMOLITION
<u>ELECTRICAL</u>	
E100	FIRST FLOOR PLAN ELECTRICAL ALTERATIONS
E200	ELECTRICAL SYMBOLS, SCHEDULES AND DETAILS

## ARCHITECTURAL SYMBOLS AND LEGEND

	ELEVATION REFERENCE
	NEW WALLS
	1 HOUR FIRE RATED WALL
	2 HOUR FIRE RATED WALL
	DOOR SWING w/NUMBER
	EXISTING DOOR SWING w/NUMBER
	REVISIONS
	RECESSED FIRE EXTINGUISHER
	SURFACE MOUNT FIRE EXTINGUISHER
	SPOT ELEVATION (FEET-INCHES)
	SPOT ELEVATION (FEET.DECIMAL)
	ROOM NAME & NUMBER



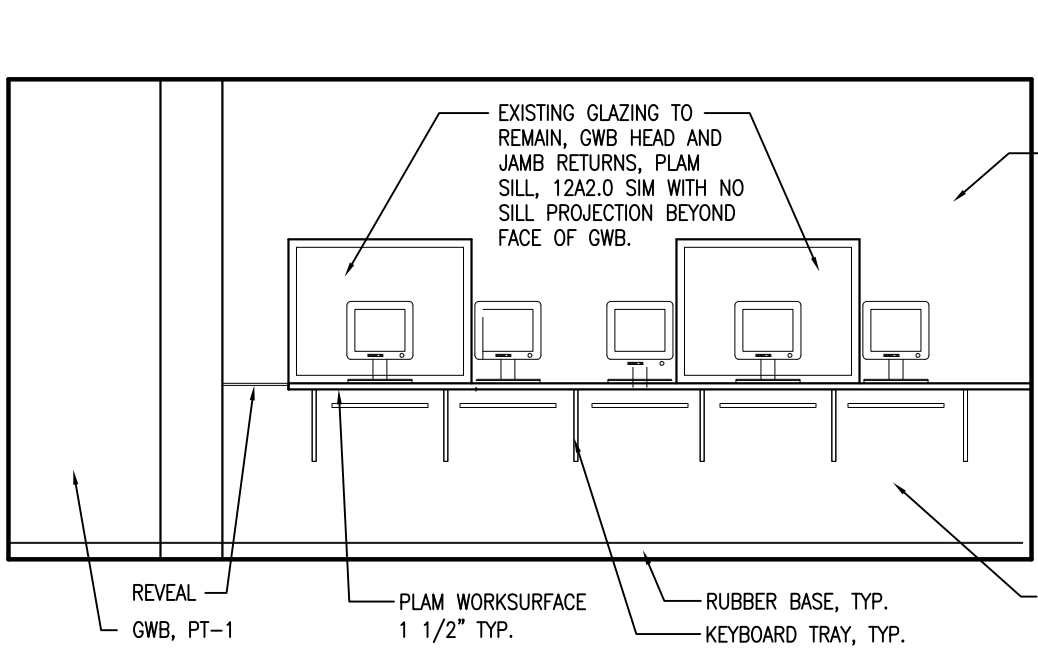
MADISON, WISCONSIN

**GENERAL NOTES:**

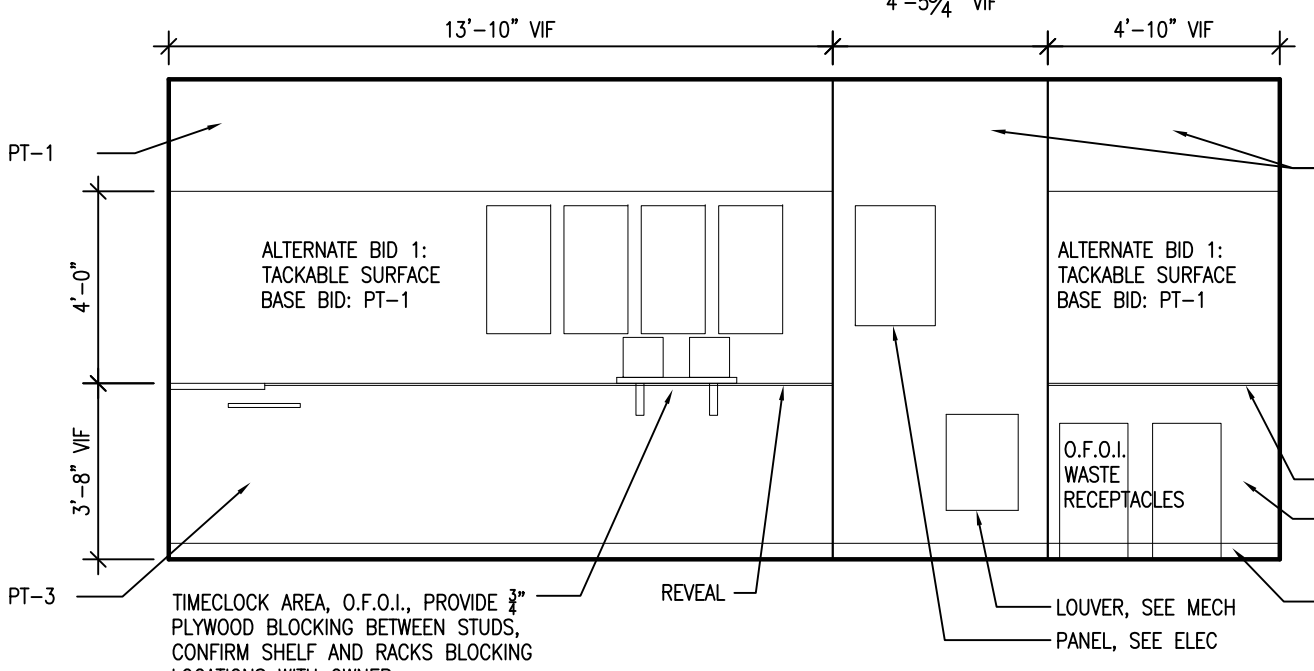
1. FIELD VERIFY ALL EXISTING CONDITIONS, NOTIFY ARCHITECT OF ANY DISCREPANCIES.
2. EXISTING BREAK ROOM MECHANICAL UNIT TO REMAIN. INTERIOR OF CLOSET ENCLOSING MECHANICAL UNIT WILL NOT RECEIVE NEW FINISHES.
3. ALL FURNITURE IS N.L.C.
4. PATCH ALL DAMAGED AREAS OF CONFERENCE ROOM CEILING AND WALLS TO REMAIN EXPOSED TO MATCH ADJACENT MATERIAL INCLUDING CONFERENCE ROOM WINDOW HEAD AND JAMB, PAINT.
5. PATCH ALL OPENINGS IN FLOOR/CEILING TO MATCH ADJACENT MATERIAL WHERE DUCTWORK, MECHANICAL PENETRATIONS AND PLUMBING PENETRATIONS HAVE BEEN REMOVED. MAINTAIN EXISTING FIRE RESISTANCE RATINGS.
6. CONFIRM ALL BLOCKING LOCATIONS PRIOR TO INSTALLATION OF GWB WITH OWNER INCLUDING BLOCKING AT MICROWAVE SHELVES AND ALL OWNER PROVIDED ITEMS.

**DEMOLITION NOTES:**

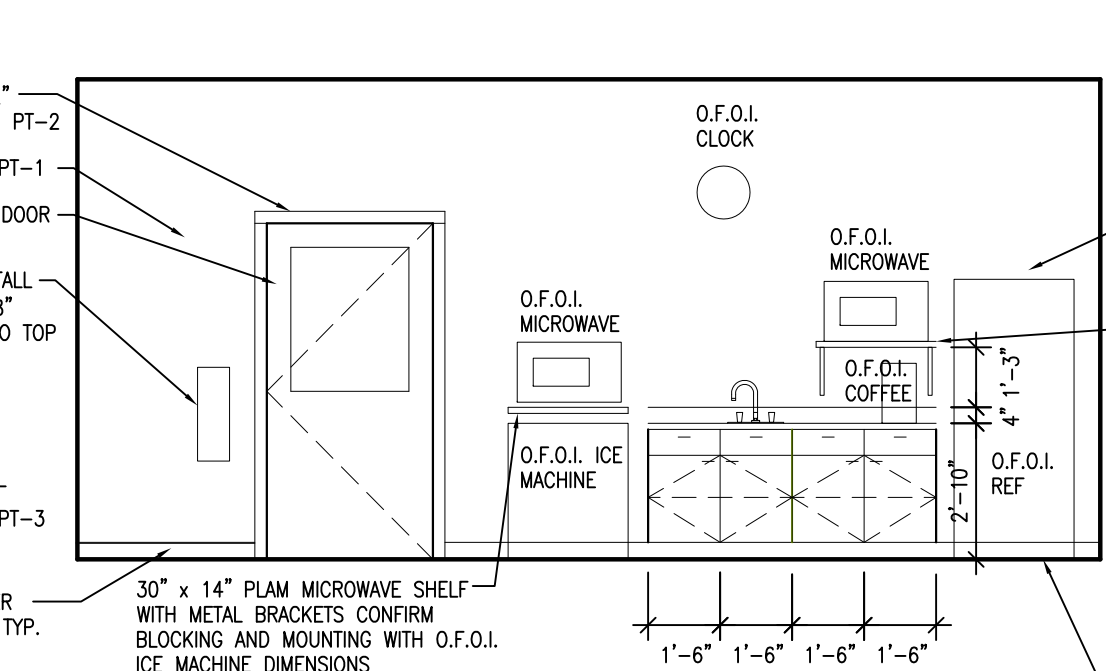
1. REMOVE EXISTING BREAK ROOM 2X2 CEILING TILE AND GRID. SEE MEP FOR ADDITIONAL INFORMATION.
2. REMOVE EXISTING CONFERENCE ROOM CEILING SUSPENSION SYSTEM. SEE MEP FOR ADDITIONAL INFORMATION.
3. REMOVE BREAK ROOM WOOD PANELING ON WALLS AND WINDOW HEAD/JAMB/SILL. REMOVE ALL FURRING.
4. REMOVE ALL RESILIENT BASE AND PREP FOR INSTALLATION OF NEW BASE. ALL EXISTING FLOORING TO REMAIN.



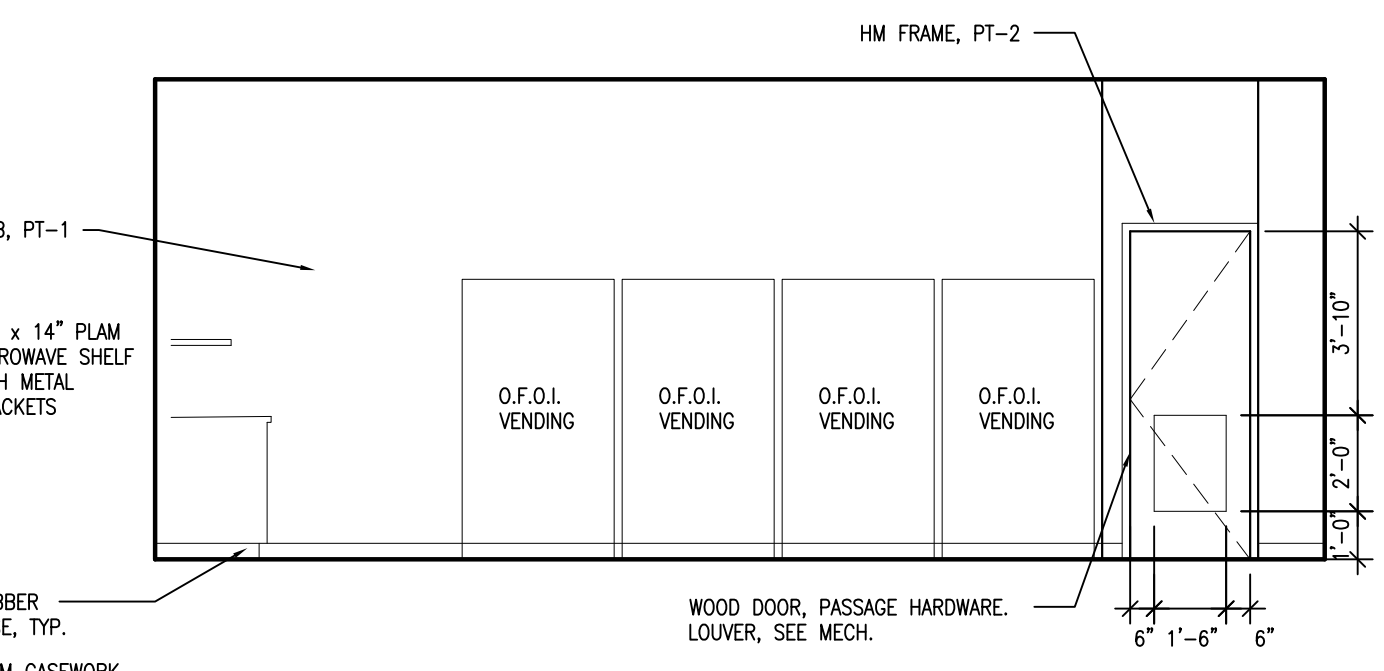
1 BREAK ROOM ELEVATION  
1/4"=1'-0"



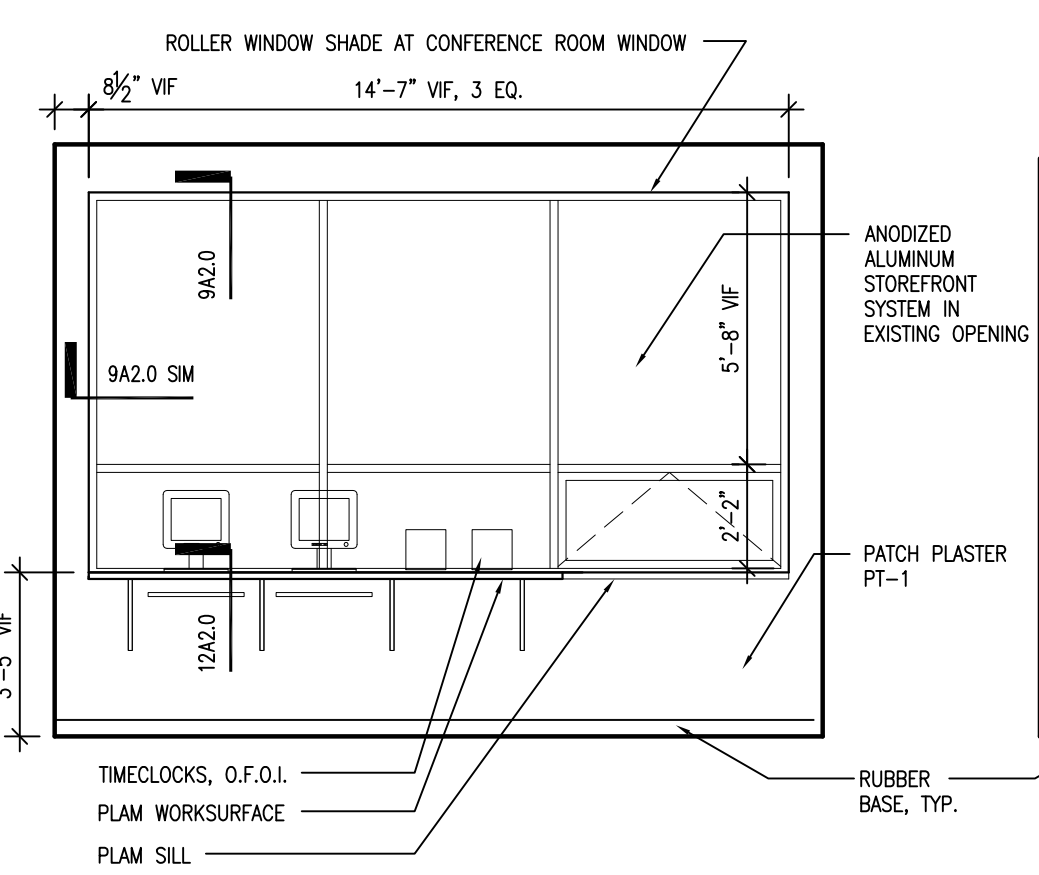
2 BREAK ROOM ELEVATION  
1/4"=1'-0"



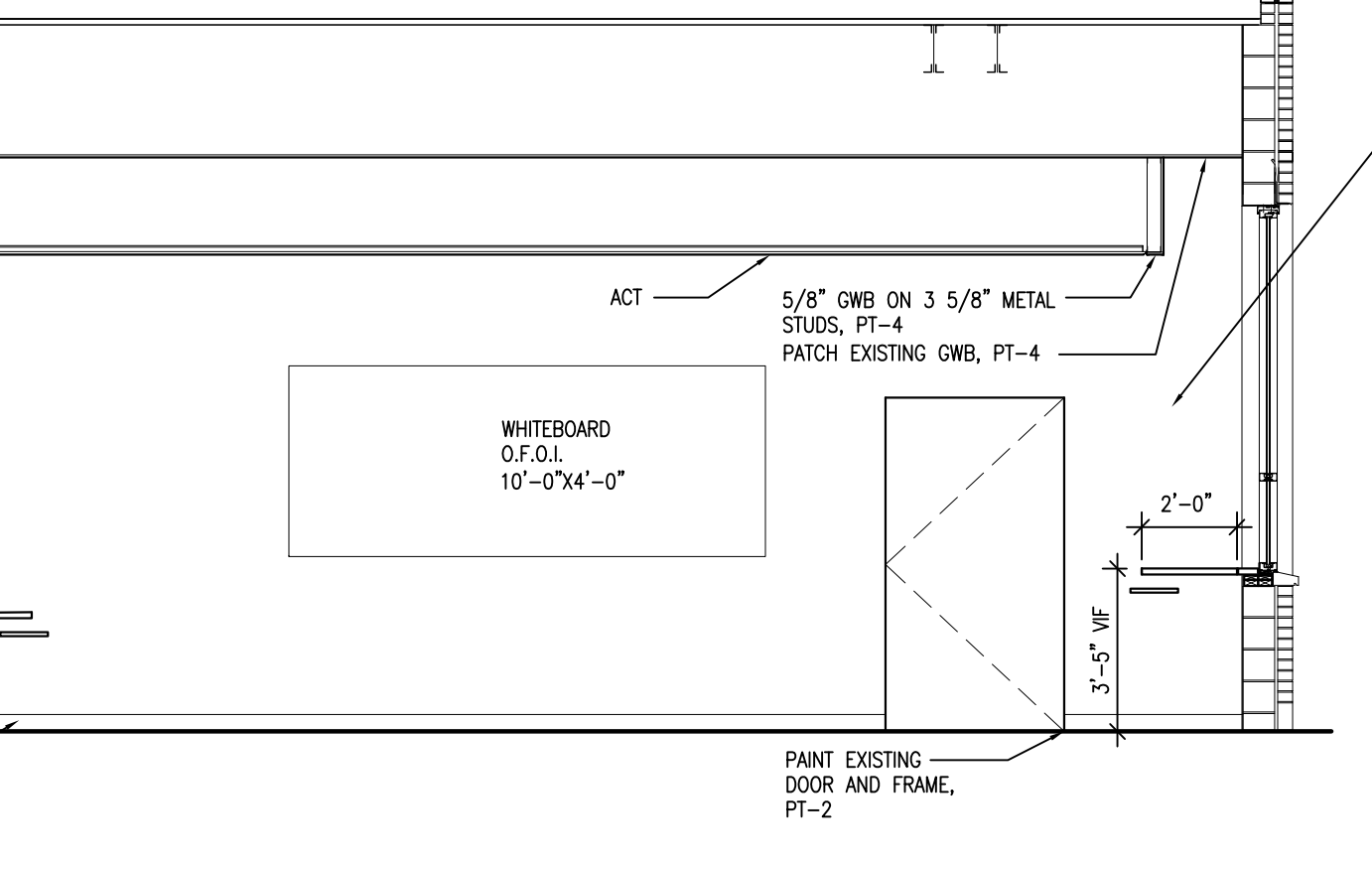
3 BREAK ROOM ELEVATION  
1/4"=1'-0"



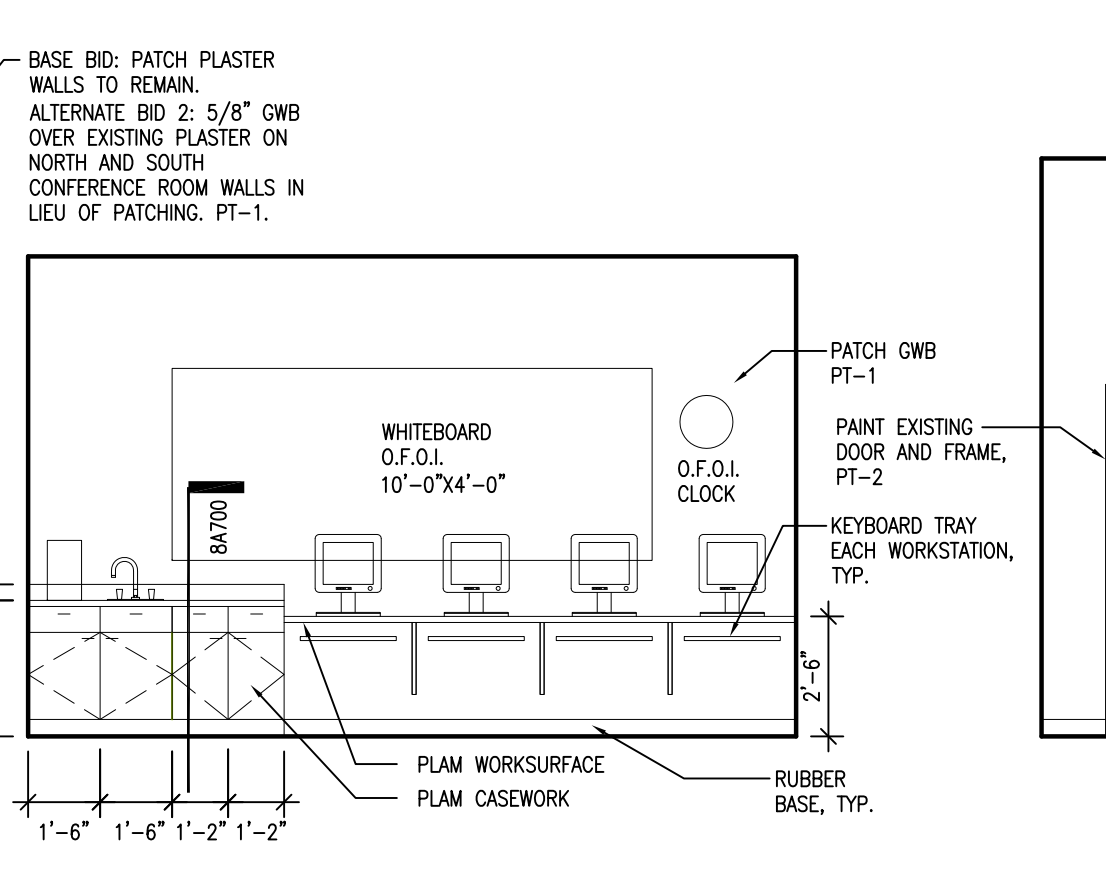
4 BREAK ROOM ELEVATION  
1/4"=1'-0"



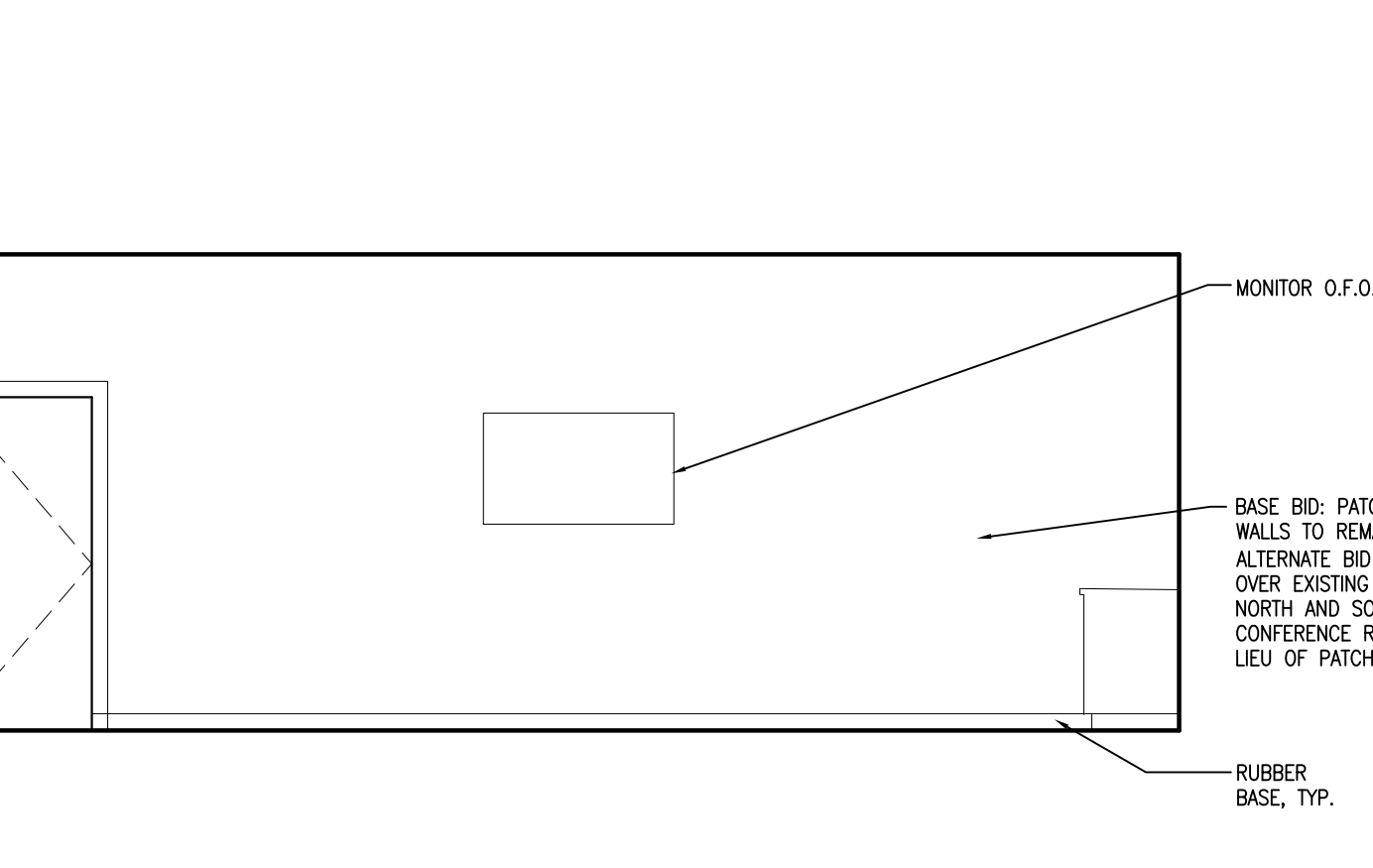
5 CONFERENCE ROOM ELEVATION  
1/4"=1'-0"



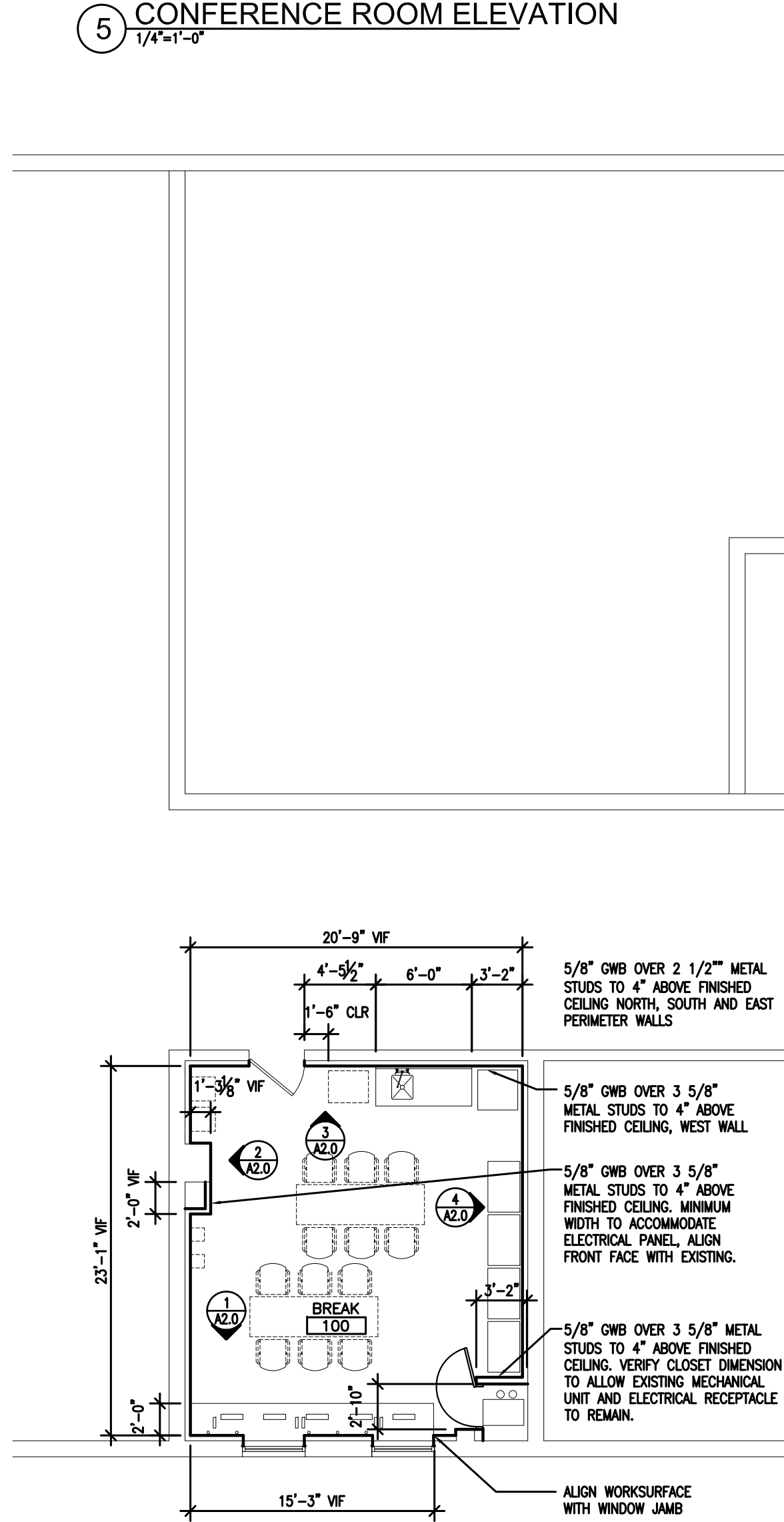
6 CONFERENCE ROOM ELEVATION  
1/4"=1'-0"



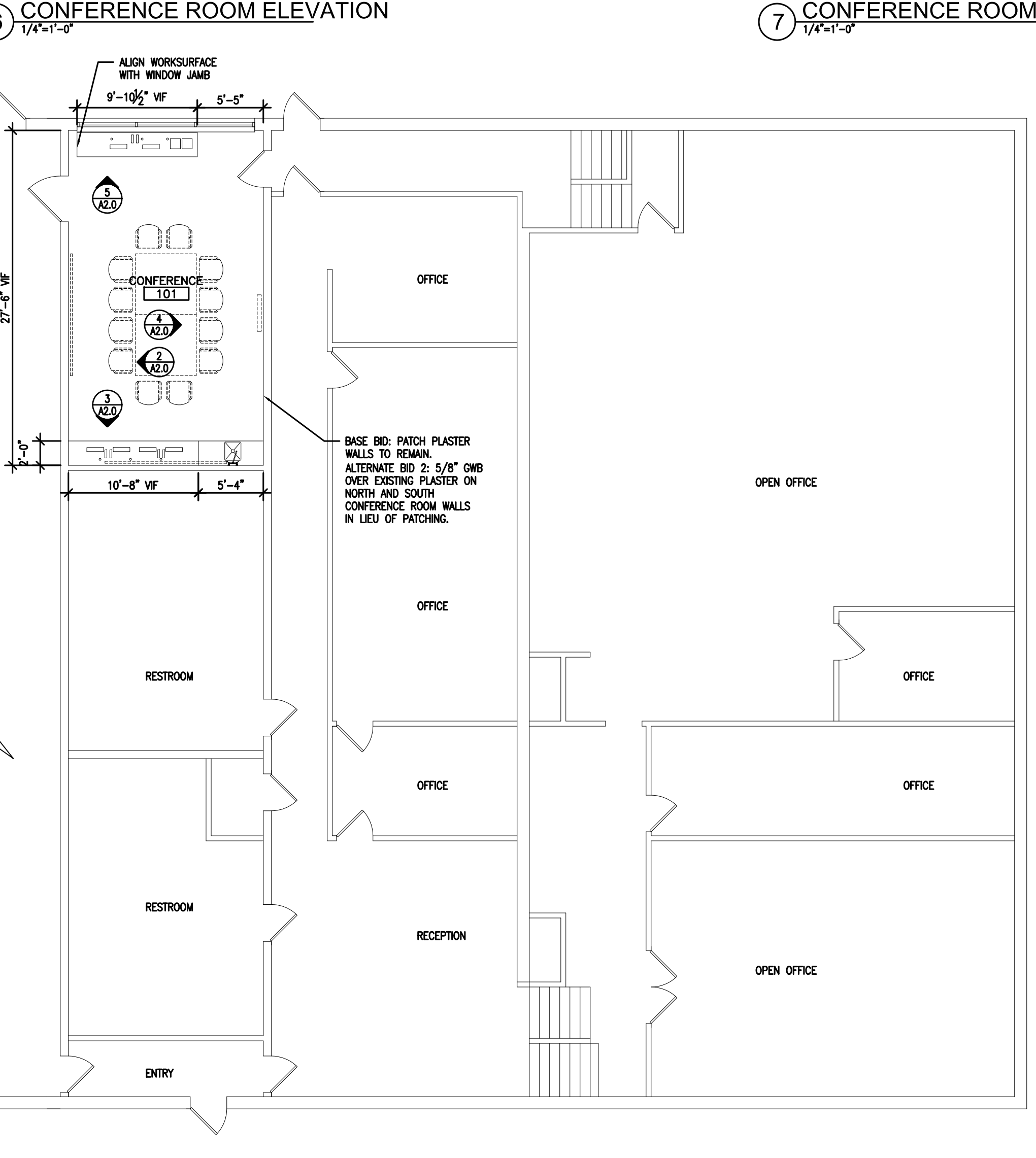
7 CONFERENCE ROOM ELEVATION  
1/4"=1'-0"



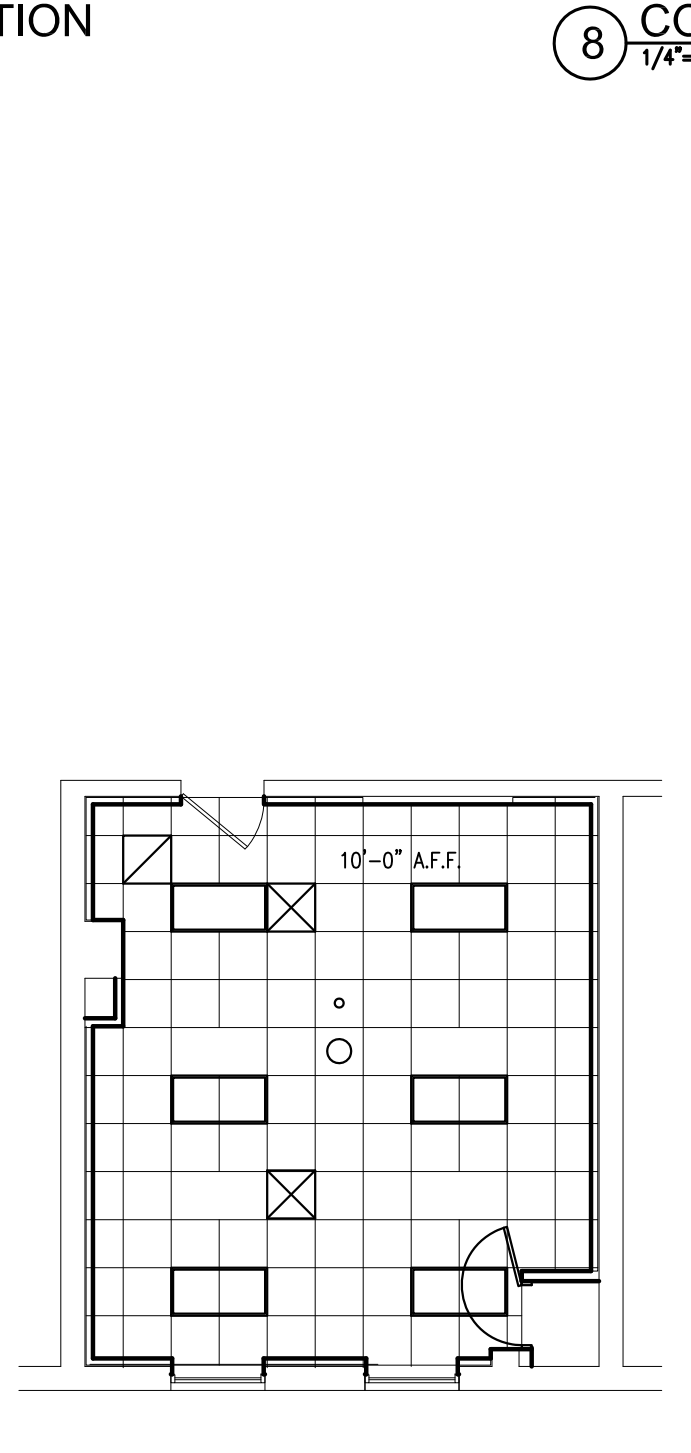
8 CONFERENCE ROOM ELEVATION  
1/4"=1'-0"



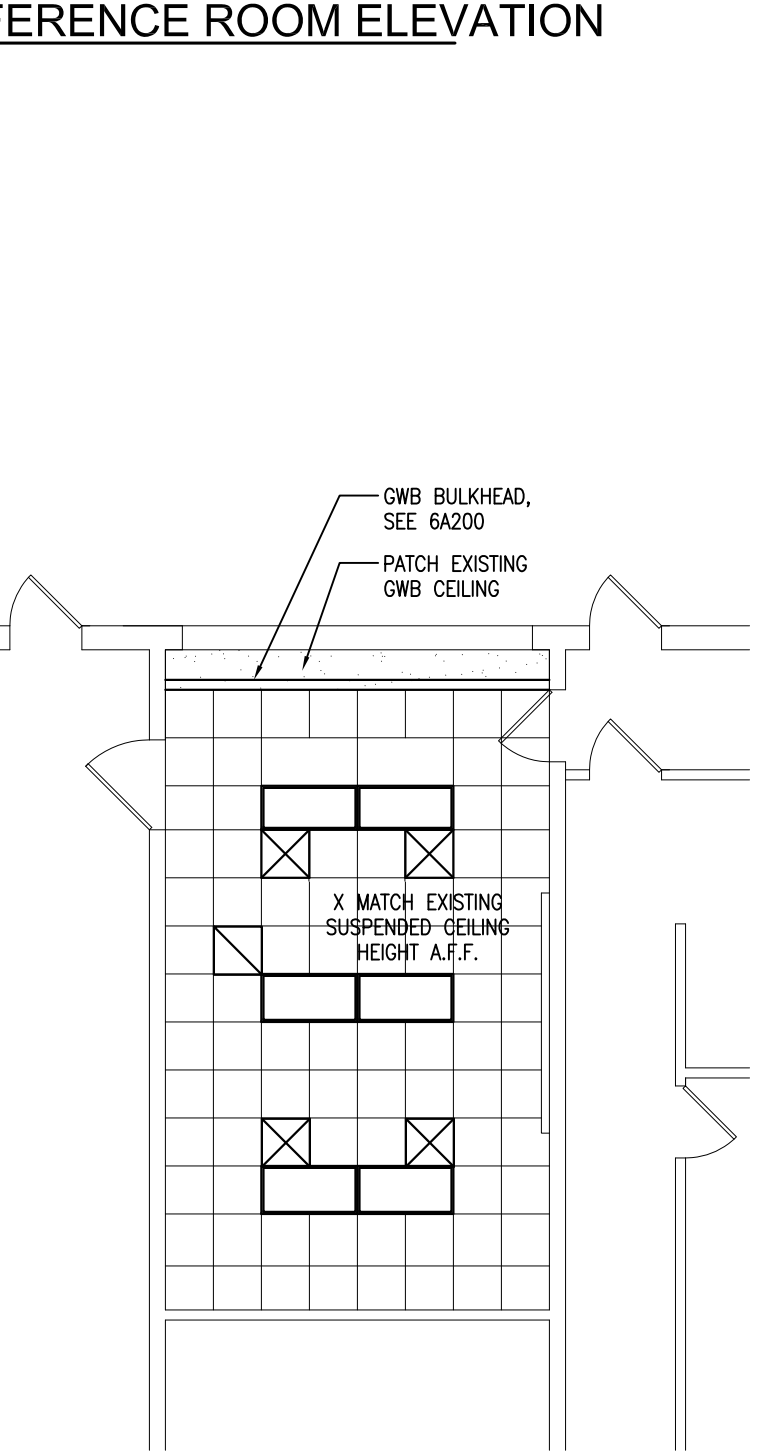
13 BREAK ROOM PLAN  
1/8"=1'-0"



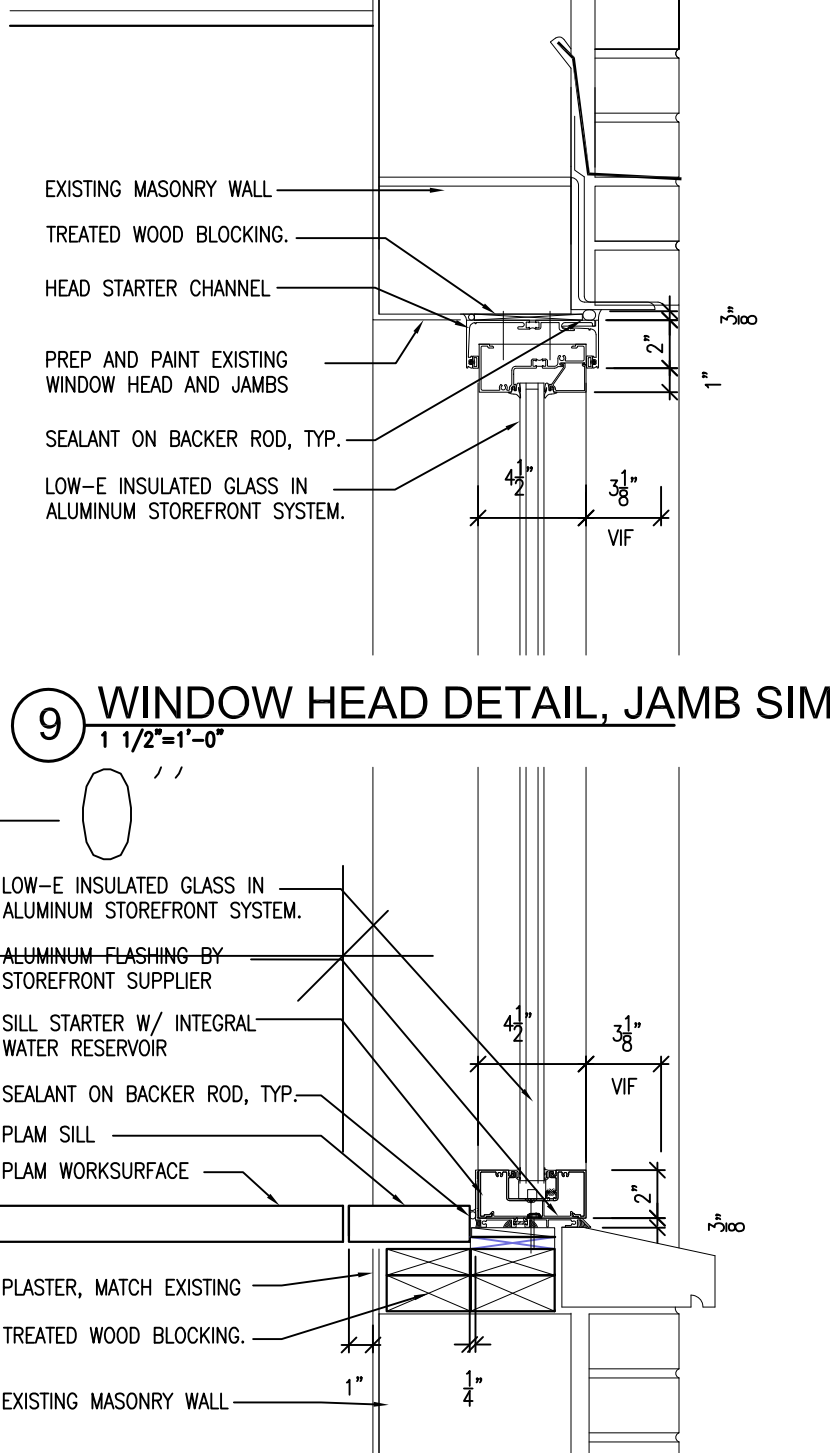
14 CONFERENCE ROOM PLAN  
1/8"=1'-0"



10 BREAK ROOM RCP  
1/8"=1'-0"

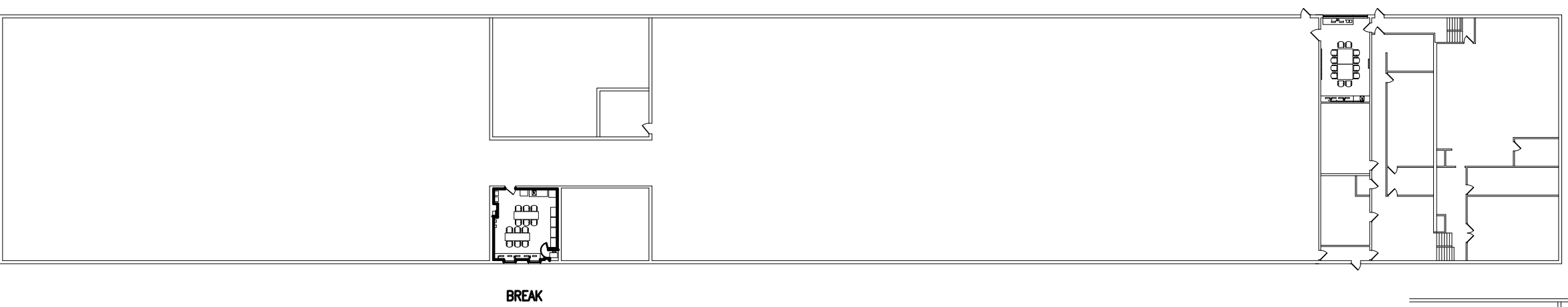


11 CONFERENCE ROOM RCP  
1/8"=1'-0"



9 WINDOW HEAD DETAIL, JAMB SIM  
1 1/2"=1'-0"

12 WINDOW SILL DETAIL  
1 1/2"=1'-0"

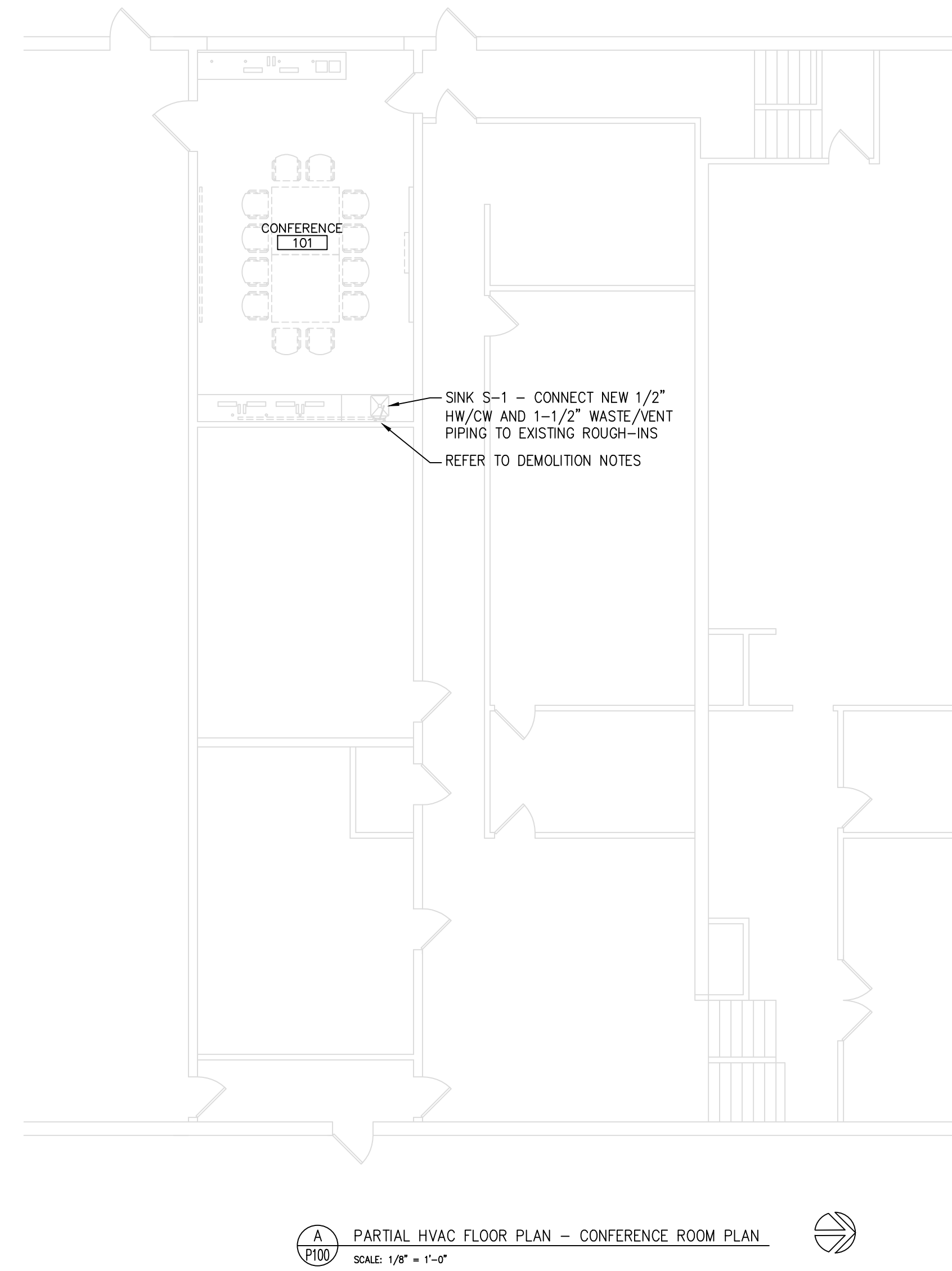
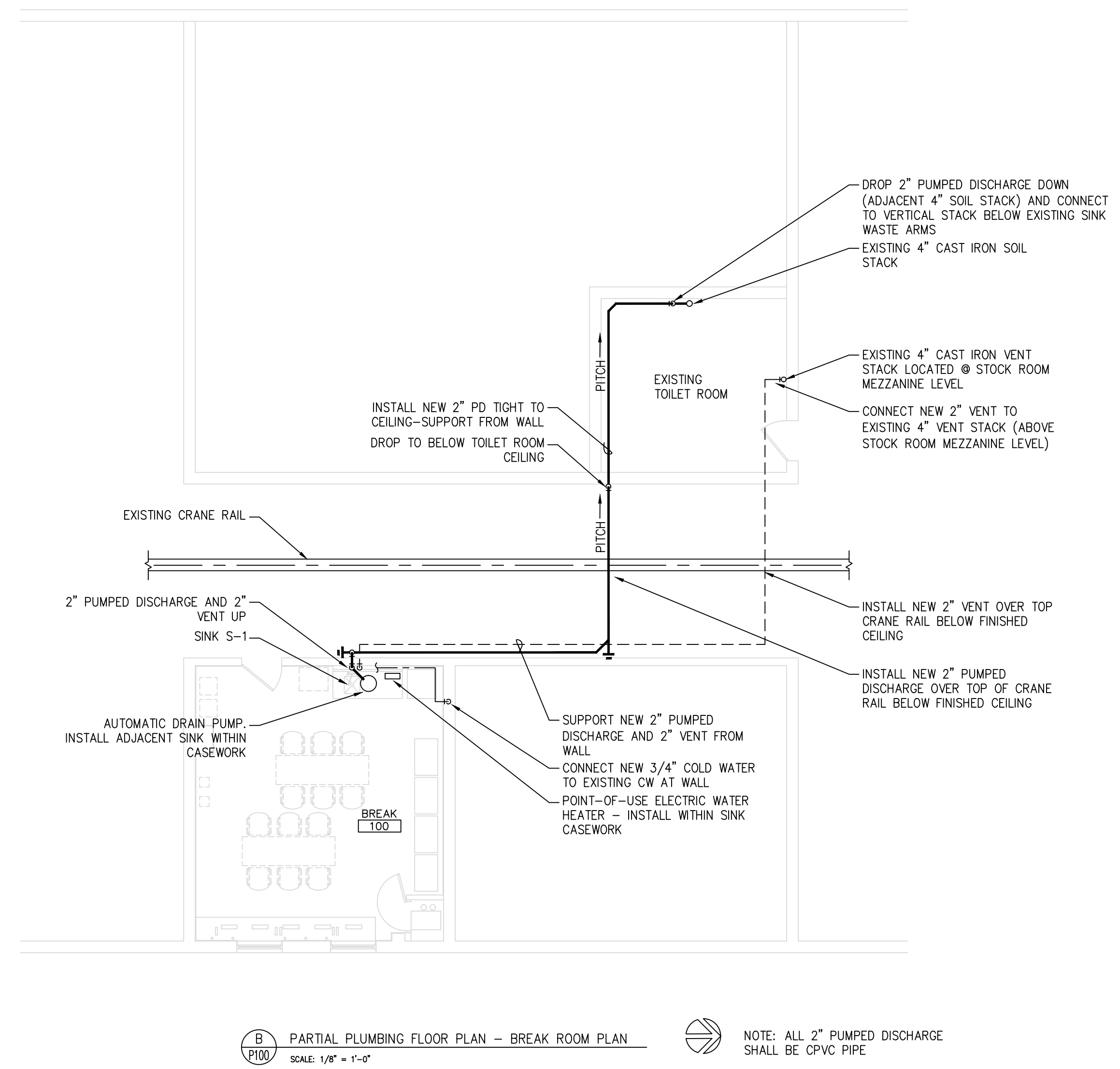
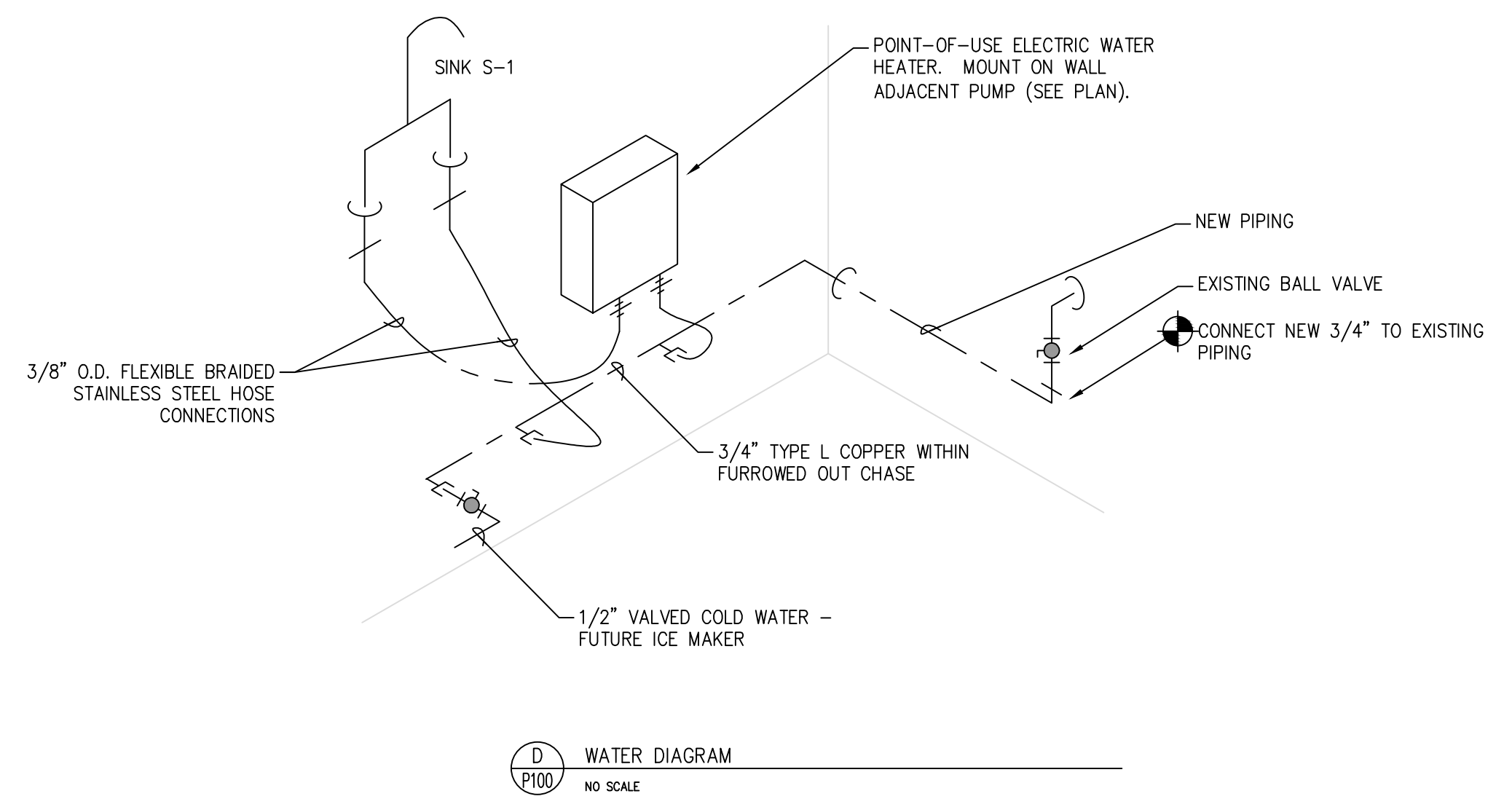
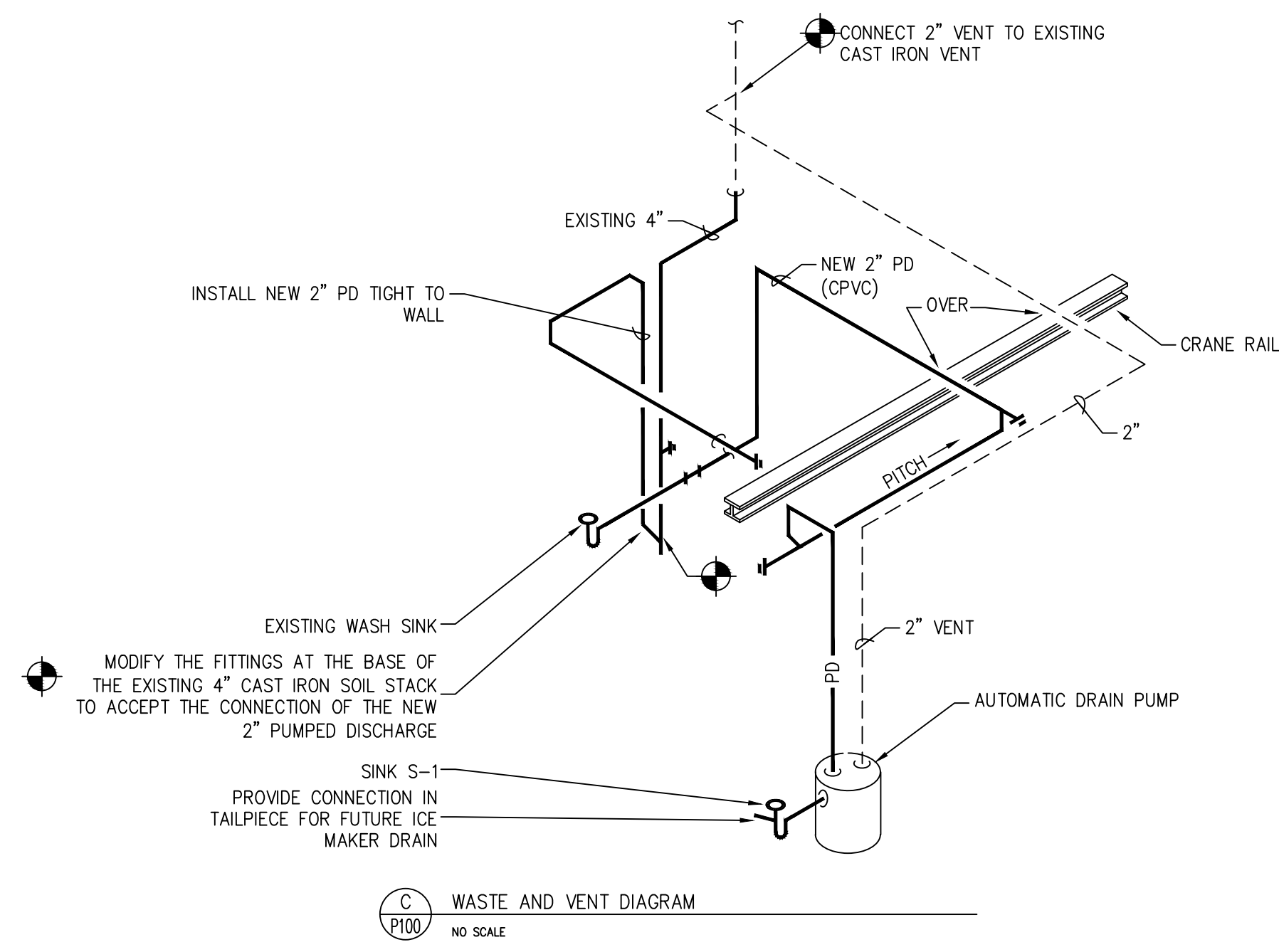


KEY PLAN - FIRST FLOOR

**PROJECT**  
BREAK ROOM AND  
CONFERENCE ALTERATIONS  
DANE COUNTY HWY GARAGE  
2302 FISH HATCHERY ROAD  
MADISON WI 53713

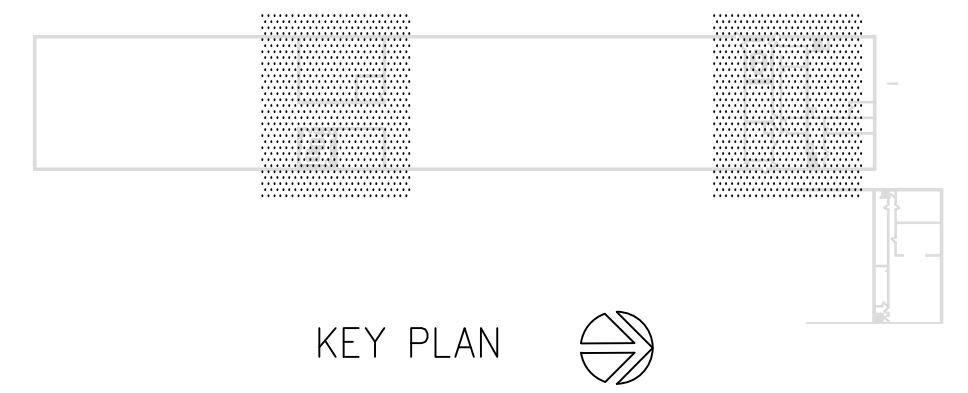
**DRAWING**  
FIRST FLOOR PLAN, RCP  
AND DETAILS

**DATE**  
05.24.13



PLUMBING SYMBOLS	
---	COLD WATER
PD	PUMPED DISCHARGE
---	WASTE
---	VENT
○	BALL VALVE
—	CLEANOUT
○	PIPING DOWN
○	PIPING UP
+	NEW CONNECTION
⊥	UNION

**DEMOLITION NOTES:**  
1. REMOVE EXISTING DOUBLE COMPARTMENT STAINLESS STEEL SINK INCLUDING FAUCET, P-TRAP AND SUPPLIES  
2. REMOVE ONE (1) EXISTING CAST IRON WASTE AND CAP PIPING WITHIN EXISTING WALL.



**PROJECT**  
BREAK ROOM AND CONFERENCE ALTERATIONS  
DANE COUNTY HWY GARAGE  
2302 FISH HATCHERY ROAD  
MADISON WI 53713

**DRAWING**  
FIRST FLOOR PLAN  
PLUMBING ALTERATIONS  
DATE

5/24/2013

PLUMBING SPECIFICATIONS

A. GENERAL

1. Plumbing systems shall conform to all local and state codes that are in force at the time of execution of work.
2. Verify the location and size of existing plumbing services that are relevant to the installation of new systems.
3. The Plumbing Contractor shall apply for and pay for the fees related to commencement of the plumbing work.
4. Plumbing Contractor shall cut and patch walls, floors, ceilings, etc. affected by new plumbing work.
5. Plumbing shall coordinate his work with all contractors.
6. Plumbing Contractor to provide one-year guarantee on all parts, material, and labor.
7. Plumbing Contractor shall submit six (6) copies of shop drawings for all piping, valves, fixtures, and equipment.
8. Plumbing Contractor shall provide operation and maintenance manuals.

B. BASIC MATERIALS AND METHODS

1. Water piping Suspended – General
  - a. Type L copper water tube, H (drawn) temper, ASTM B88; wrought copper pressure fittings, ANSI B16.22; lead free (<.2%) solder, ASTM B32 flux, ASTM B813; copper phosphorus brazing alloy, AWS A5.8 BCuP.

2. Water System Valves
  - Ball valves
  - 3 and smaller: Two piece bronze, full port body; sweat ends, stainless steel ball; glass filled Teflon seal. Teflon packing and threaded packing nut; blowout-proof stem; 600 psig WOG. Provide valve stem extensions for valves installed in all piping with insulation. Equal to Apollo 77C, NIBCO, Milwaukee and Watts are considered equal.

3. Piping Insulation
  - a. Closed cell, with minimum nominal density of 5.5 lbs per cu. Ft. thermal conductivity of not more than 0.27 at 75EF mean temperature, and maximum water vapor transmission of 0.17 per inch. The material shall be suitable for a temperature range from 220 degrees F to minus 40 degrees F. Armstrong AP Armaflex or Armaflex II, Rubatex, or Halstead F/R Insul- Tube insulation.

- b. Rigid Fiberglass Insulation
  - Minimum nominal density of 3lbs per cu. ft. and thermal conductivity of not more than 0.23 degrees at 75 degrees F, minimum compressive strength of 25 PSF at 10% deformation, rate for service to 450 degrees F.

White kraft reinforced foil vapor barrier all service jacket, factory applied to insulation with a self-sealing pressure sensitive adhesive lap, maximum permeance of 0.02 perms and minimum breach puncture resistance of 50 units.

4. Sanitary Waste and Vent
  - a. Interior Above Ground
    - Hubless cast iron soil pipe and fittings, ASTM A888I with no hub couplings, CISPI 310, ASTM A74. Pipe and fittings shall be marked with the collective trademark of the Cast Iron Pipe Institute or receive prior approval of the engineer.
  - b. PVC Plastic Pipe, Schedule 40, Class 12454-B (PVC 1120), ASTMD1785; PVC plastic drain, waste and vent pipe fittings, ASTM D2665; socket fitting patterns, ASTM D3311; primer, ASTM F656, solvent cement, ASTM D2564.
  - c. CPVC Plastic Pipe (2" pumped discharge) schedule 40, pipe, type IV, grade 1, ASTM D-1784, ASTM D2846, ASTM F441/F441M, ASTM F442/F442M.

5. Water Piping Suspended – Execution
  - a. Test new piping by sections before connecting fixtures with hydrostatic pressure of 100 psi without loss of pressure for at least two hours.
  - b. Disinfection: Provide chlorine disinfection as outlined in SPS 82.40 (8)(i). Other approved disinfection methods may be used with prior approval by the engineer.

6. Pumped Discharge and Vent Execution				
a. System	Test Medium	Initial Test Pressure	Duration	Final Test Pressure
Sanitary Waste and Vent	Water	N/A	2 hr.	10' Water

7. Pipe Hangers
  - a. Hangers for pipe sizes 1/2" through 2":
    - Carbon steel, adjustable swivel ring, BLine B3170NF, Anvil 69 or 70.
    - Carbon steel, adjustable clevis, standard. B-Line B3100, Anvil 260.

8. PLUMBING FIXTURES

Manufacturers: Elkay, Just, and Kohler.

1. Sink S-1
  - a. 18 Gauge, type 304 stainless steel single compartment sink.

Fixture: Elkay LR-2219

Faucet: Kohler "Coralais" Model K-15173-PT single handle, ceramic disc and side spray pullout faucet.

Drain: Elkay Lk-35 with conical strainer basket

Trap: Kohler K-9000 cast brass "P"-Trap

Supplies: 3/8" O.D. braided stainless steel flexible supplies – lengths as required.

9. PLUMBING EQUIPMENT

1. Automatic Drain Pump
  - a. Manufacturers: Liberty, Little Giant, and Zoeller.

b. Pump shall be equal to Liberty Pumps, Model 405, 1/2 HP, 115 volt, single phase. Pump system shall be factory pre-assembled, fully automatic operation, oil filled, hermetically sealed motor with thermal-overload protection, 10 ft., 3-wire power cord with grounded plug. Pump shall be capable of 10 GPM @ 30 ft. head.

2. Point-of-use electric water heater
  - a. Manufacturers: Stiebel Eltron or Eemax

b. Electric heater shall be equal to Stiebel Eltron Mini 4 wired for 208 volt, single phase electrical service. The tankless electric heater shall be equipped with a bare wire nichrome type heating element housed in a fiberglass reinforced high temperature plastic containment. Provide flow snitch that operates the heating element. Flow switch shall be of the mechanical pressure differential type. Include high limit switch with manual reset. Unit shall have a two foot long AWG #12 wire harness.

Architecture  
Planning

Dorschner Associates, Inc.  
849 E. Washington Ave., Ste 112  
Madison, Wisconsin 53703

**SPD**  
SELECT PLUMBING DESIGN, LLC  
4564 EVERGREEN ROAD  
MIDDLETON, WI. 53562  
(608) 836-9674  
DCHAM1@TDS.NET

ISSUED

**PROJECT**  
BREAK ROOM AND  
CONFERENCE ALTERATIONS  
DANE COUNTY HWY GARAGE  
2302 FISH HATCHERY ROAD  
MADISON WI 53713

**DRAWING**  
PLUMBING SPECIFICATIONS

DATE

5/24/2013

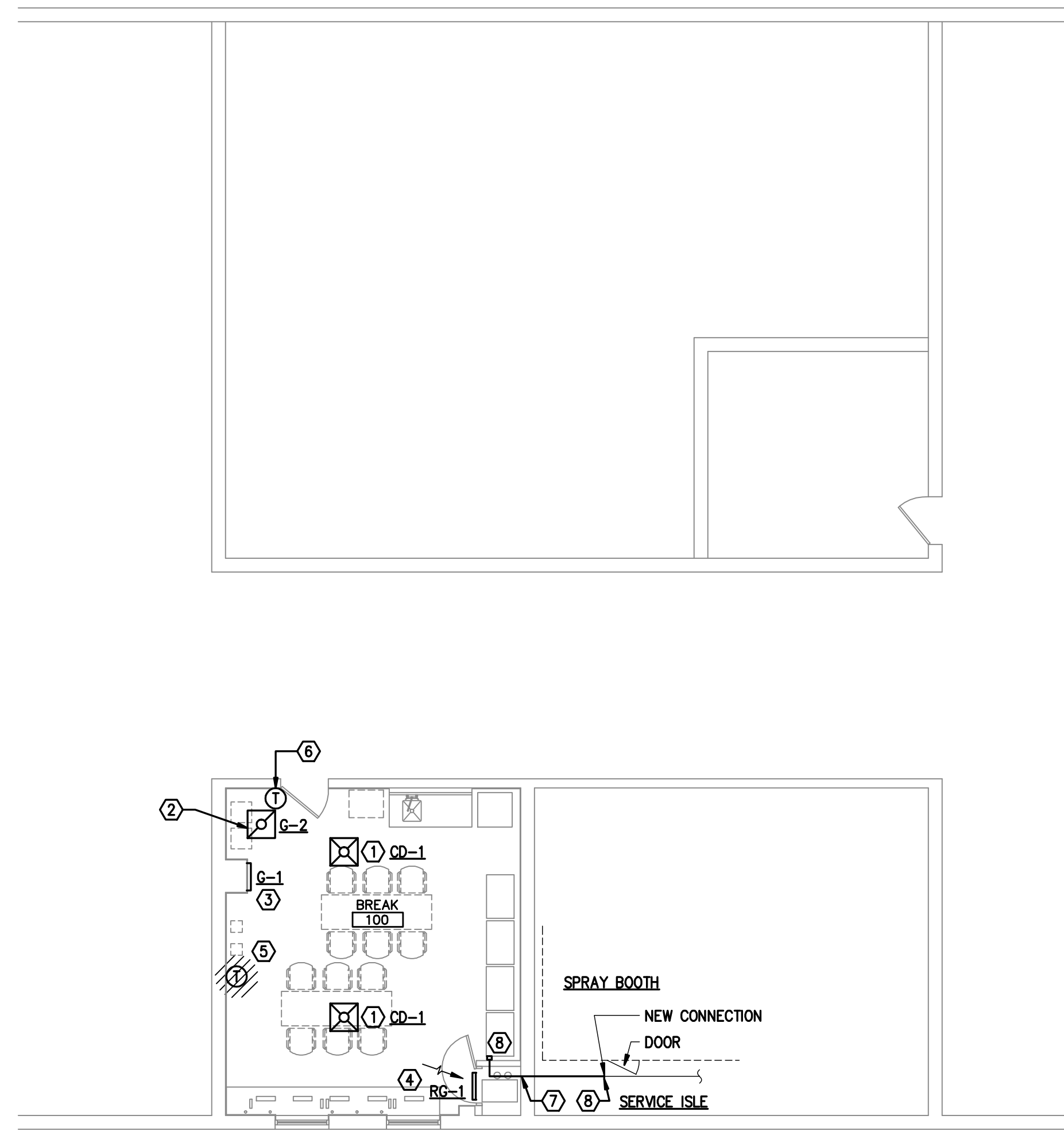
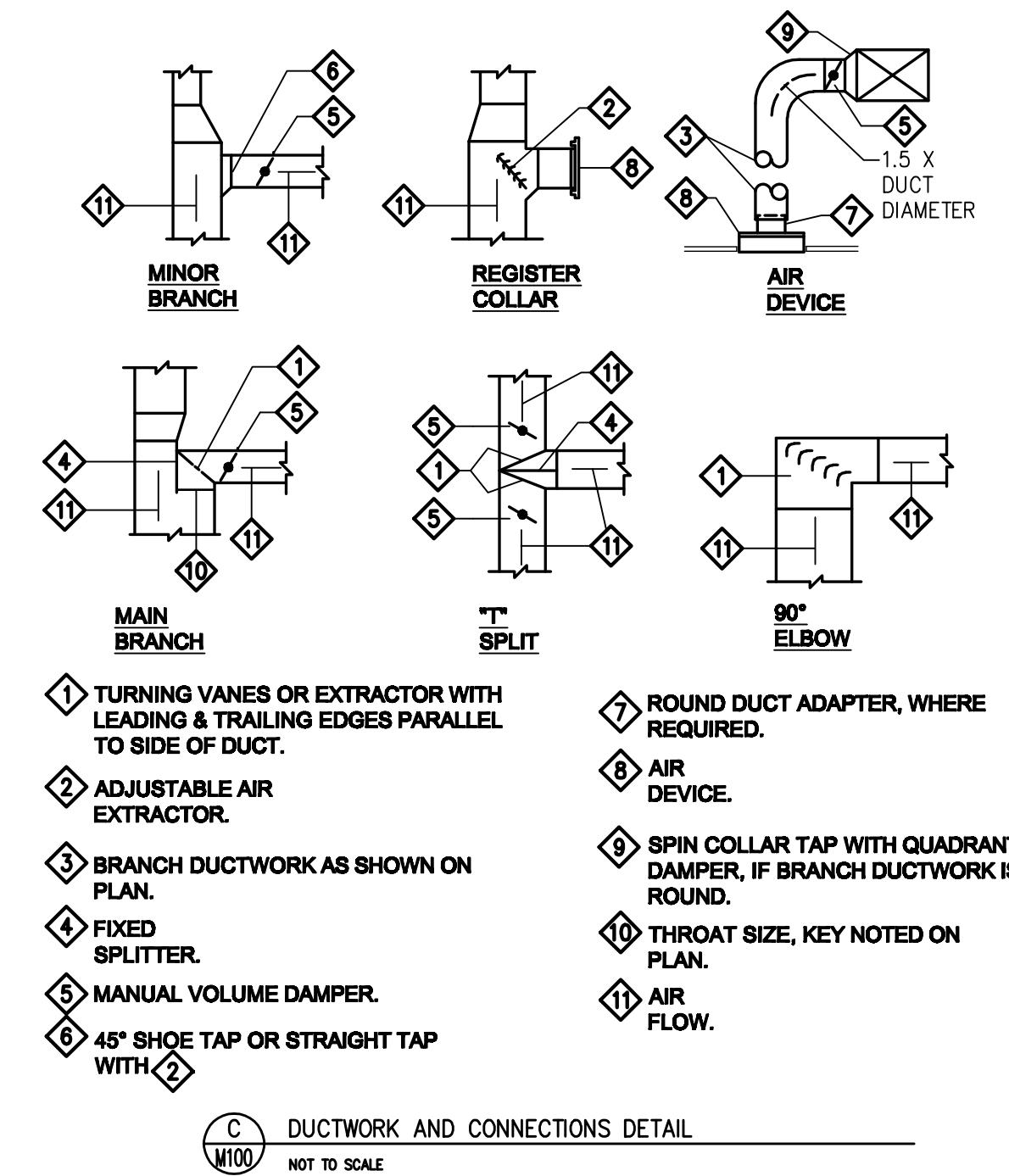
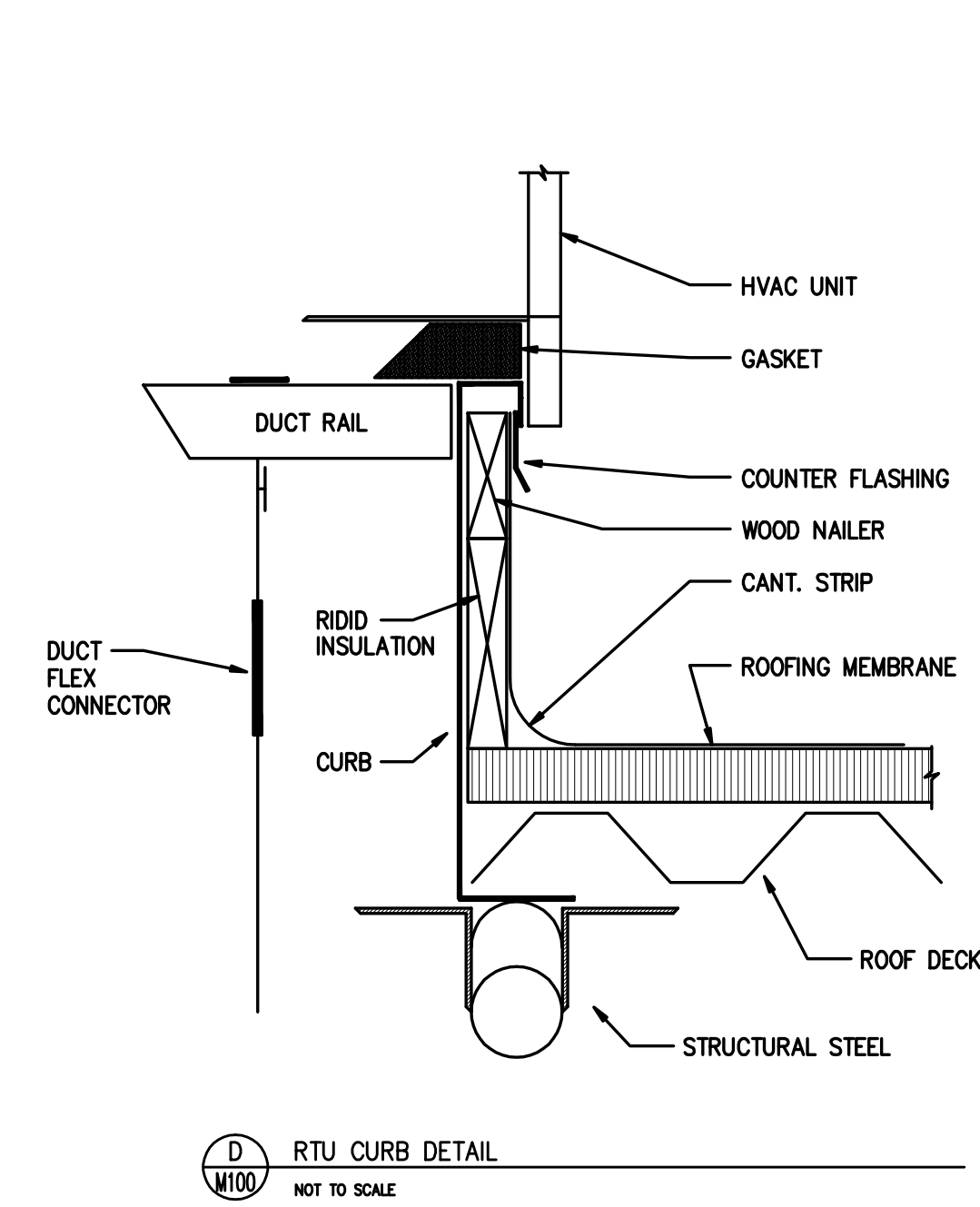
**P200**

GRILLE, REGISTER, DIFFUSER SCHEDULE												
MARK	MANUFACTURER	MODEL NO.	DESCRIPTION	SIZE	MATERIAL	MOUNTING	AIR PATTERN	CFM RANGE	DAMPER	APD MAX. " W.C.	ACCESSORIES	REMARKS
CD-1	CARNES	SFPA	PLAQUE FACE	12" NECK	STEEL	T BAR LAY-IN	4 WAY	300-400	NO	0.05		1
CD-2	CARNES	SKTA - 20	LOUVER FACE TWO WAY	12 X 12 WITH 10" ROUND INLET	STEEL	T BAR LAY-IN	2 WAY OPPOSITE	325	NO	0.05		
CD-3	CARNES	SKTA - 20	LOUVER FACE TWO WAY	12 X 12 WITH 10" ROUND INLET	STEEL	T BAR LAY-IN	2 WAY OPPOSITE	225	NO	0.05		
RG-1	CARNES	RSABH	SINGLE DEFLECTION	18 W X 24 H	STEEL	DOOR	45 DEG DEFLECTION	800	NO	0.05		
RG-2	CARNES	RAPAC	12 X 1/2 X 1/2 EGGRATE	24 X 24	ALUM.	T BAR LAY-IN		1100	NO	0.05		
G-1	CARNES	RSABH	SINGLE DEFLECTION	18 W X 24 H	STEEL	WALL	45 DEG DEFLECTION		NO	0.05		2
G-2	CARNES	RAPAC	12 X 1/2 X 1/2 EGGRATE	24 X 24	ALUM.	T BAR LAY-IN			NO	0.05		2

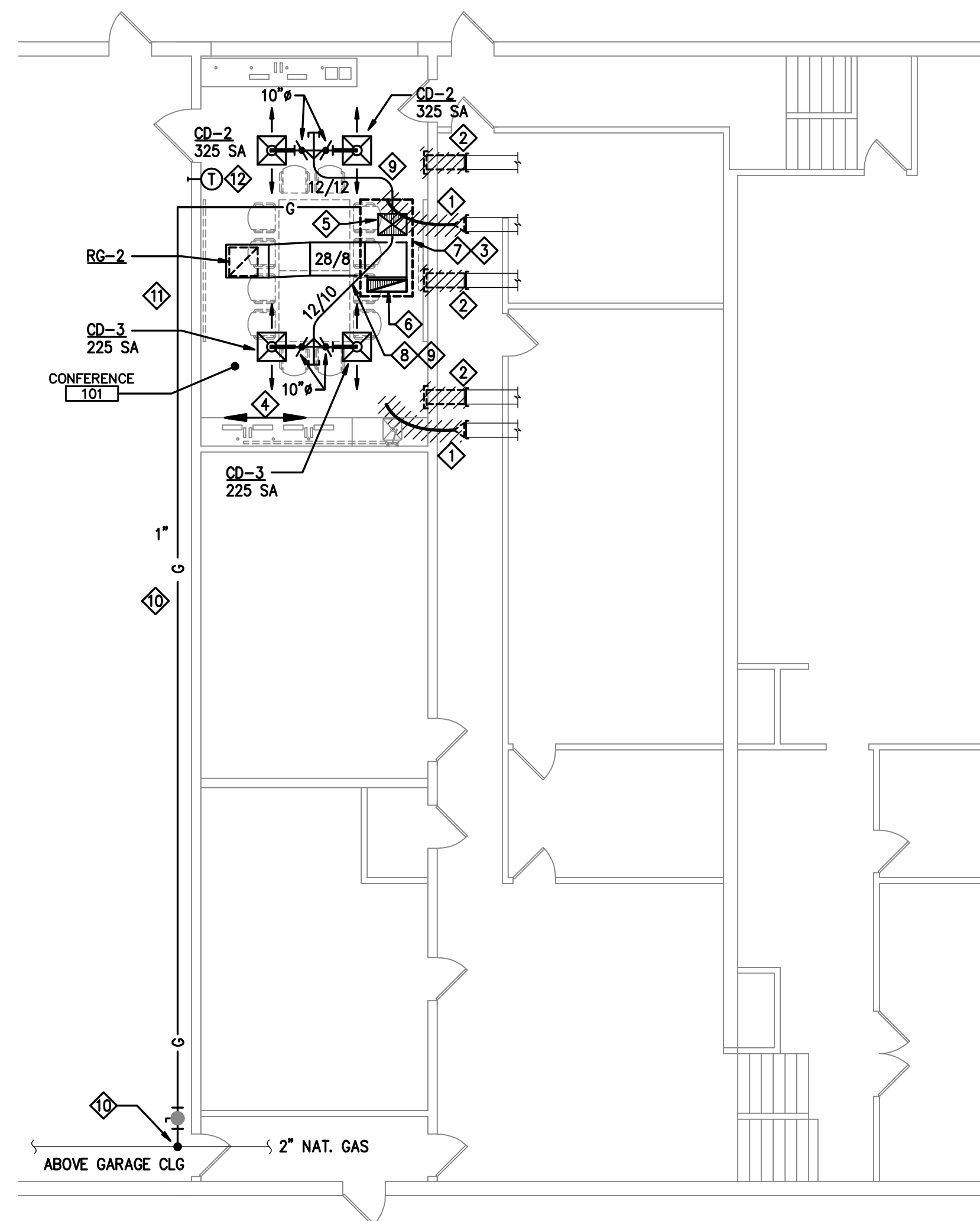
REMARKS  
 1 REPLACES EXISTING DIFFUSER  
 2 REPLACES EXISTING GRILLE

GAS - ELECTRIC ROOF TOP UNIT SCHEDULE																	
MARK	MANUFACTURER	MODEL NO.	CAPACITY		FAN		AMBIENT		NO. OF REFRIG. CIRCUITS	NO. OF COMPRESS. FANS	NO. OF COND. EER / SEER	ELECTRICAL DATA		REMARKS			
			NOMINAL TONS	COOLING MBH (GROSS) TOTAL / SEN	HEATING MBH INPUT OUTPUT	CFM	SP TOT / EXT IN. WC	HP				REFRIG. TYPE	TEMP °F		MCA	MAX OVER CURRENT	VOLTS / PHASE
RTU-1	AAON	RQ-003	3	36.7 / 32	60	48.6	1300	1.33 / 0.4	1	410 A	95	1	13.2 / 14.9	24	35	208/3	1, 2, 3, 4

REMARKS  
 1 UNIT TO PROVIDE MINIMUM 130 CFM OUTSIDE AIR IN OCCUPIED MODE WITH EQUAL RELIEF.  
 2 18 HIGH INCH CURB  
 3 DIRECT DRIVE SUPPLY FAN  
 4 REFER TO SPECIFICATION FOR REQUIRED FILTERS



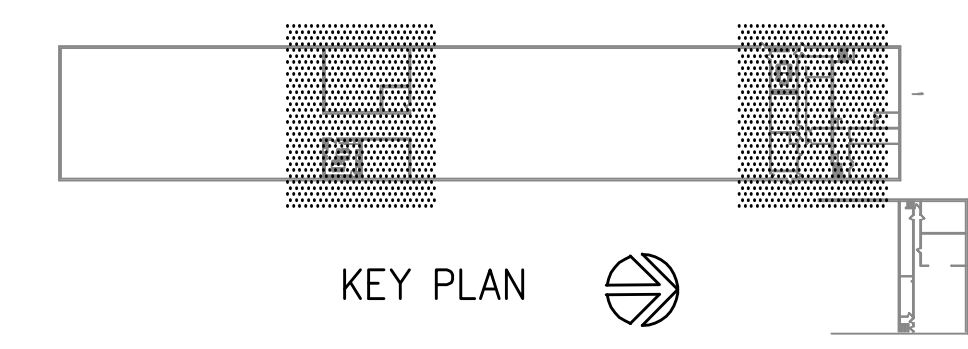
B  
M100  
PARTIAL HVAC FLOOR PLAN - BREAK ROOM PLAN  
SCALE: 1/8" = 1'-0"



A  
M100  
PARTIAL HVAC FLOOR PLAN - CONFERENCE ROOM PLAN  
SCALE: 1/8" = 1'-0"

- BREAK ROOM DEMOLITION AND NEW WORK NOTES**
- REMOVE EXISTING CEILING DIFFUSER AND REPLACE WITH NEW DIFFUSER AS SCHEDULED FOR CD-1. REMOVE EXISTING BRANCH DUCT AS NECESSARY. THE NEW DIFFUSER MAY BE LOCATED IN A SLIGHTLY DIFFERENT LOCATION THAN THE EXISTING. EXTEND THE DUCT FROM THE EXISTING LOCATION TO THE NEW DIFFUSER AS NECESSARY.
  - REMOVE EXISTING LAY-IN CEILING GRILLE AND REPLACE WITH NEW GRILLE AS SCHEDULED FOR G-2. THE NEW GRILLE MAY BE LOCATED IN A SLIGHTLY DIFFERENT LOCATION THAN THE EXISTING. EXTEND THE DUCT FROM THE EXISTING LOCATION TO THE NEW GRILLE AS NECESSARY.
  - REMOVE EXISTING WALL GRILLE AND REPLACE WITH NEW GRILLE AS SCHEDULED FOR G-1. EXTEND DUCT THROUGH NEW WALL CONSTRUCTION TO FACE OF NEW FINISHED WALL.
  - INSTALL NEW RETURN GRILLE RG-1 IN NEW DOOR. COORDINATE WITH GENERAL CONTRACTOR FOR CUTTING DOOR OPENING.
  - REMOVE THERMOSTAT CONTROLLING EXISTING FURNACE. THERMOSTAT TO BE RELOCATED.
  - NEW LOCATION OF EXISTING THERMOSTAT. INSTALL NEW THERMOSTAT CONTROL WIRING FROM FURNACE TO NEW THERMOSTAT LOCATION.
  - REMOVE SPRAY BOOTH BREATHING AIR INTAKE AND 2" PVC PIPING BACK TO POINT INDICATED FOR NEW CONNECTION TO EXISTING.
  - REINSTALL SPRAY BOOTH BREATHING AIR INTAKE ON NEW FURNACE ENCLOSURE WALL. CONNECT NEW 2" PVC PIPE TO INTAKE. INSTALL 90° LONG SWEEP ELBOW AND NEW PIPING TO POINT INDICATED AND CONNECT TO EXISTING 2" PVC.

- CONFERENCE ROOM DEMOLITION AND NEW WORK NOTES**
- REMOVE FLEXIBLE DUCT BACK TO ABOVE ADJACENT CORRIDOR CEILING. CAP EXISTING DUCT REMAINING AT POINT OF DISCONNECTION.
  - REMOVE WALL GRILLE AND DUCT BACK TO ABOVE ADJACENT CORRIDOR. CAP EXISTING DUCT REMAINING AT POINT OF DISCONNECTION.
  - RTU-1 ON ROOF
  - ROOF JOIST RUN NORTH-SOUTH 16 INCHES CENTER TO CENTER.
  - RISE 24 X 12 SUPPLY AIR DUCT UP BETWEEN JOIST. DROP DUCT BELOW JOIST TO ALLOW HORIZONTAL SUPPLY CONNECTIONS. COORDINATE EXACT LOCATION WITH JOIST. OFFSET AND TRANSITION DUCT WITHIN CURB AND CONNECT TO UNIT 24 X 18 SUPPLY AIR OUTLET
  - RISE TO 33 X 8 RETURN AIR DUCT UP BETWEEN JOIST. HORIZONTAL OFFSET OF DUCT TO BE BELOW THE SUPPLY AIR DUCT. COORDINATE LOCATION WITH JOIST. OFFSET AND TRANSITION DUCT WITHIN CURB AND CONNECT TO UNIT 33 X 9 RETURN AIR INLET
  - PROVIDE RTU CURB TO GENERAL CONTRACTOR FOR INSTALLATION IN EXISTING ROOF.
  - CONNECT 12 X 10 DUCT TO EAST SIDE OF SUPPLY DROP AND RUN ABOVE RETURN AIR DUCT TO CD-3S.
  - CONNECT 12 X 12 TO WEST SIDE OF SUPPLY DROP AND RUN TO CD-2S.
  - CONNECT 1 INCH GAS TO EXISTING 2 INCH GAS BELOW GARAGE CEILING. BRACKET/HANG PIPING ON WALL
  - RUN GAS PIPING THROUGH GARAGE WALL ABOVE THE CONFERENCE ROOM CEILING AND RISE WITHIN CURB TO THE UNIT GAS CONNECTION. PROVIDE A GAS VALVE AND DIRT LEG AT UNIT CONNECTION.
  - INSTALL THERMOSTAT. EXTEND CONDUIT FOR CONTROL WIRING THROUGH WALL. RUN CONDUIT EXPOSED IN GARAGE AND OFFSET THROUGH WALL TO ABOVE CONFERENCE ROOM CEILING. EXTEND WIRING TO ROOFTOP UNIT.
- GENERAL NOTE:**  
 THE DESCRIPTIONS OF THE RISE LOCATIONS, SIZES AND UNIT CONNECTIONS ARE BASED ON THE UNIT MODEL AND MANUFACTURE SCHEDULED. IF ANOTHER UNIT IS APPROVED THE CONTRACTOR SHALL SUBMIT TO THE ENGINEER REQUIRED DUCT MODIFICATIONS FOR APPROVAL BEFORE FABRICATION AND INSTALLATION.



KEY PLAN

Architecture  
Planning

Dorschner Associates, Inc.  
848 E. Washington Ave., Ste 112  
Madison, Wisconsin 53703

Engineering 370, LLC  
MECHANICAL CONSULTING

Oregon, WI 53575  
T: 608-225-9273  
F: 608-835-2077  
Email: info@eng370.com

Project No. 13-0404

ISSUED

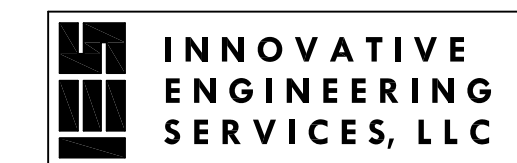
**PROJECT**  
BREAK ROOM AND  
CONFERENCE ALTERATIONS  
DANE COUNTY HWY GARAGE  
2302 FISH HATCHERY ROAD  
MADISON WI 53713

**DRAWING**  
FIRST FLOOR PLAN HVAC  
NEW WORK AND DEMOLITION

DATE

05.24.13

M100

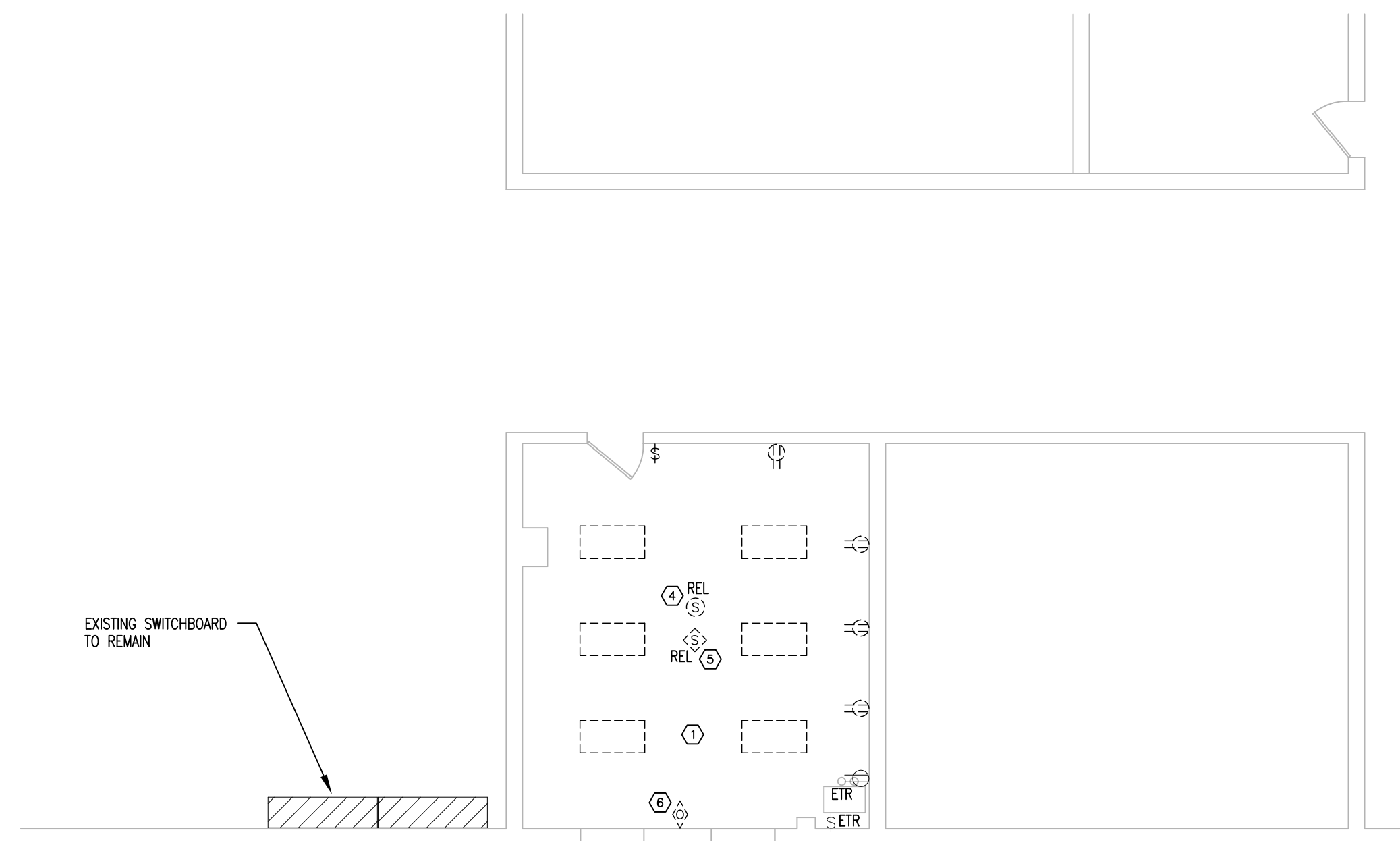


9514 Union Valley Road  
Black Earth, Wisconsin 53515  
Phone: 608-279-1717  
Email: dhill.ies@ids.net

Architecture  
Planning

Dorschner|Associates, Inc.  
849 E. Washington Ave., Ste 112  
Madison, Wisconsin 53703

ISSUED

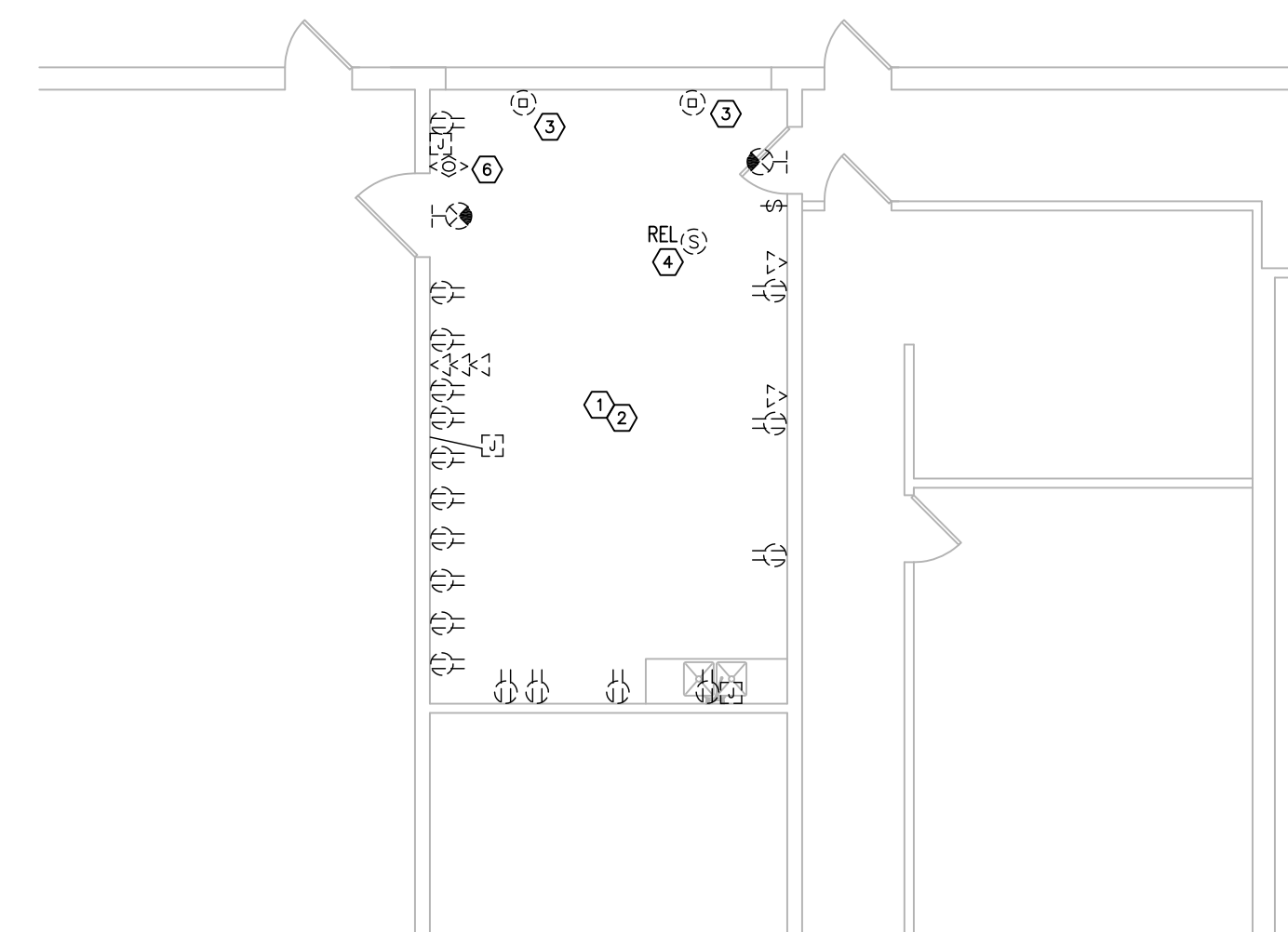


1 BREAK ROOM PLAN - ELECTRICAL - DEMOLITION  
1/8"=1'-0"

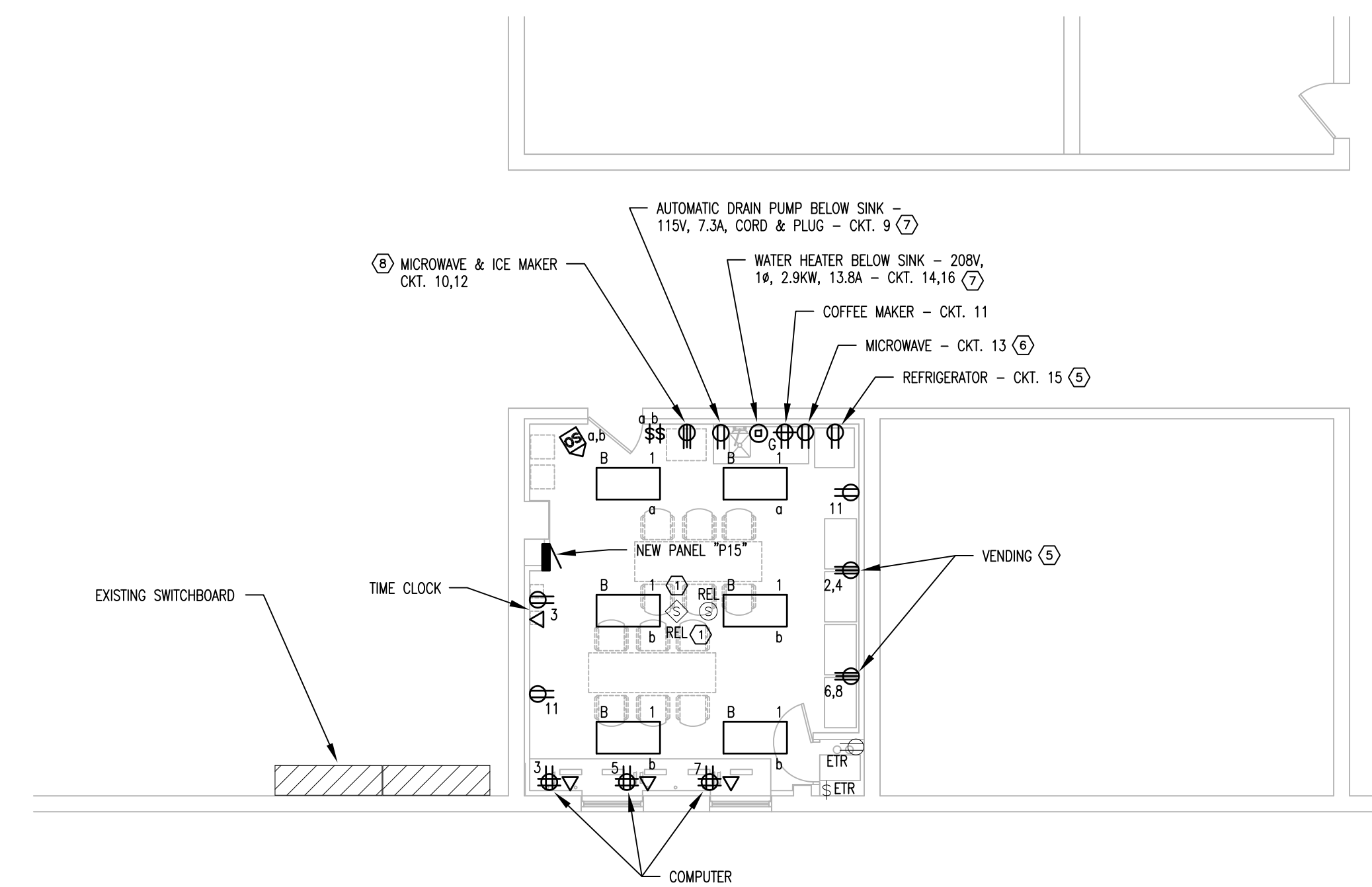


DEMOLITION PLAN NOTES:

- 1 DISCONNECT AND REMOVE ALL EXISTING FIXTURES, DEVICES, AND ASSOCIATED BOXES, CONDUIT, SURFACE RACEWAY, WIRE, ETC. BACK TO NEAREST JUNCTION BOX (UNO).
- 2 DISCONNECT AND REMOVE EXISTING TELECOMMUNICATIONS DEVICES, EQUIPMENT, AND ASSOCIATED WIRE AS NECESSARY. CLOSELY COORDINATE WORK WITH OWNER.
- 3 DISCONNECT AND REMOVE EXISTING ELECTRIC HEATER, AND ASSOCIATED WIRE & CONDUIT BACK TO SOURCE.
- 4 DISCONNECT AND REMOVE EXISTING FIRE ALARM DETECTOR. COIL WIRE, AND FASTEN ABOVE CEILING FOR FUTURE USE. STORE DETECTOR IN SAFE LOCATION FOR RE-INSTALLATION. REFER TO NEW WORK PLAN.
- 5 DISCONNECT AND REMOVE EXISTING CEILING SPEAKER. COIL WIRE, AND FASTEN ABOVE CEILING FOR FUTURE USE. STORE SPEAKER IN SAFE LOCATION FOR RE-INSTALLATION. REFER TO NEW WORK PLAN.
- 6 DISCONNECT AND REMOVE EXISTING SECURITY DEVICE. COORDINATE WORK WITH OWNER.



2 CONFERENCE ROOM PLAN - ELECTRICAL - DEMOLITION  
1/8"=1'-0"

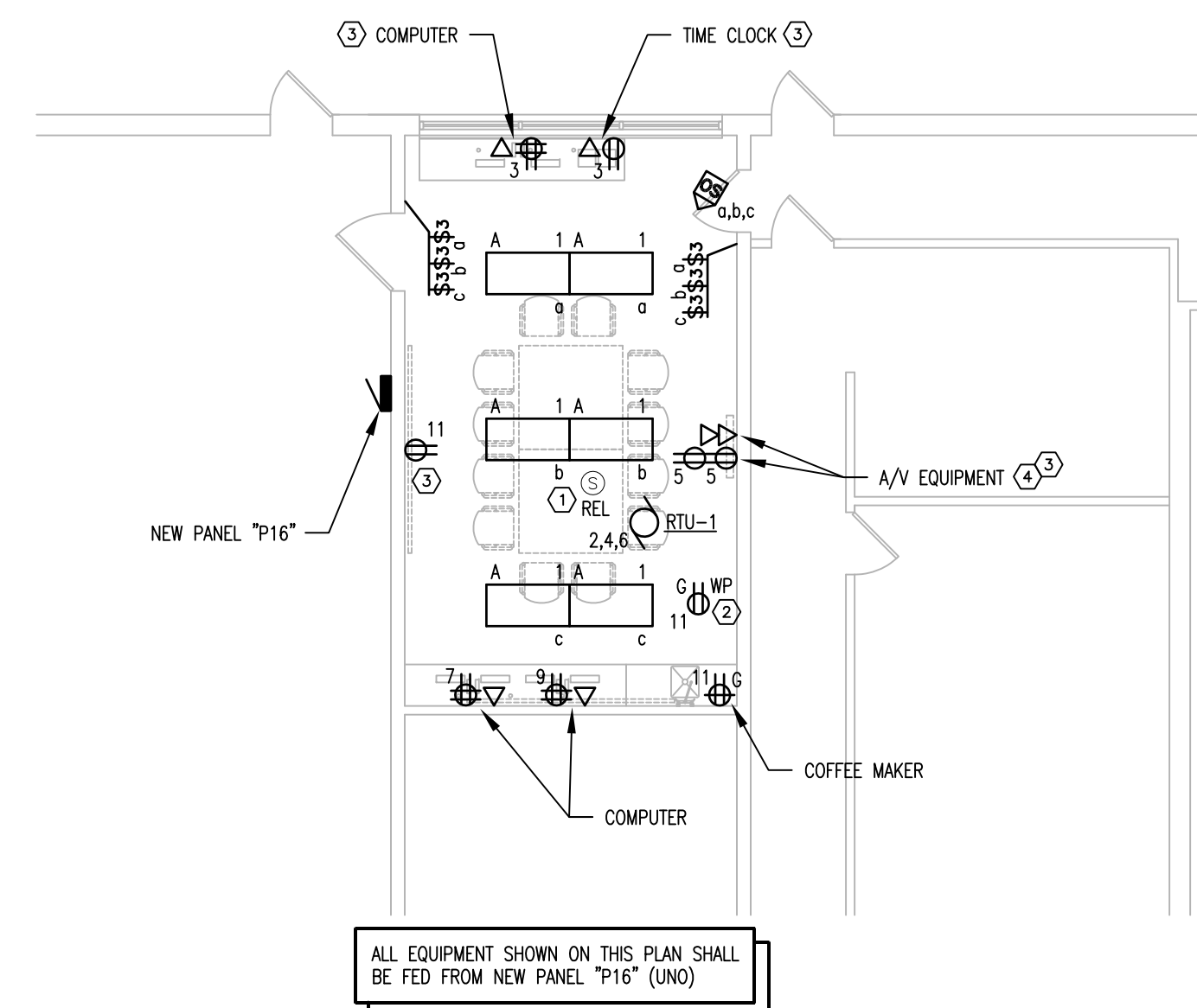


3 BREAK ROOM PLAN - ELECTRICAL - NEW WORK  
1/8"=1'-0"

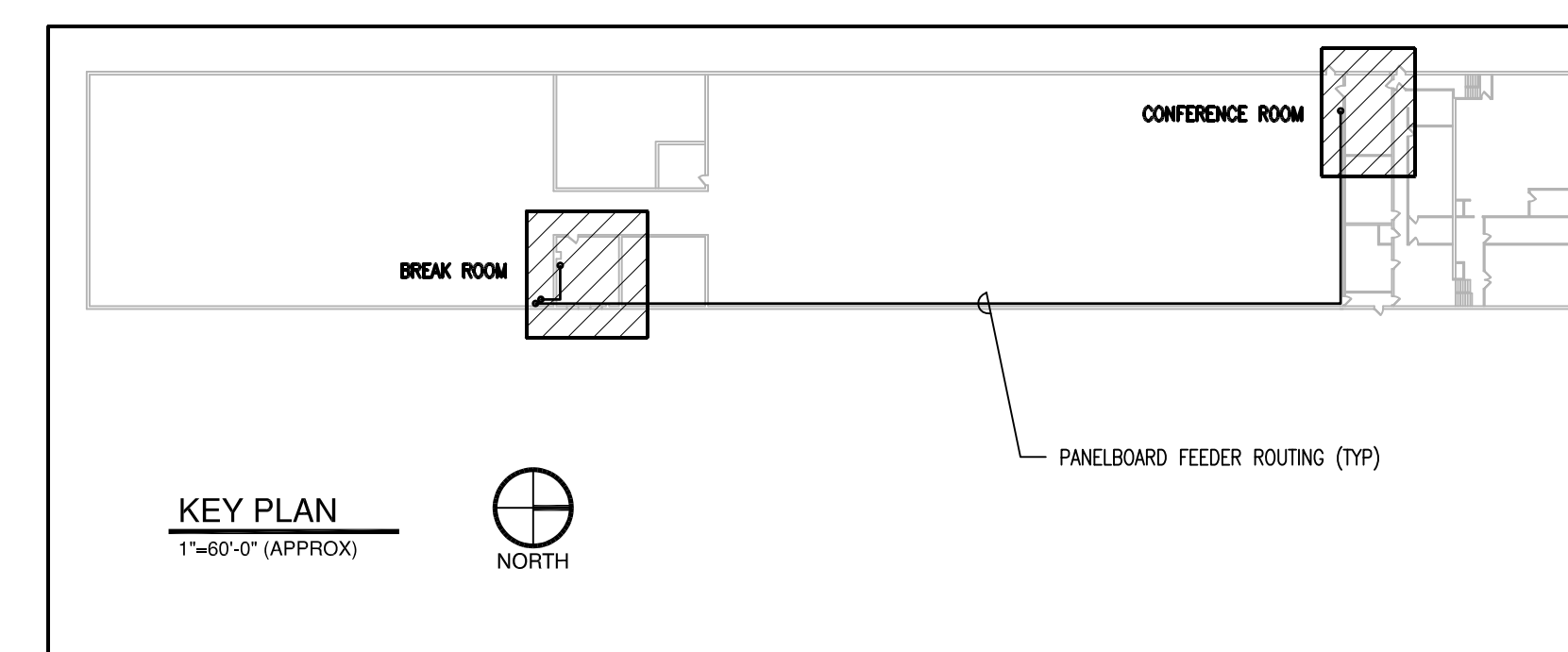


NEW WORK PLAN NOTES:

- 1 CLEAN EXISTING DEVICE AND RE-INSTALL AT THIS LOCATION. TEST DEVICE FOR PROPER OPERATION.
- 2 PROVIDE DUPLEX RECEPTACLE AT THIS LOCATION ON ROOF TO SERVICE ROOF MOUNTED HVAC EQUIPMENT.
- 3 DEVICE(S) SHALL BE FED VIA SURFACE NON-METALLIC RACEWAY. REFER TO SPECIFICATIONS.
- 4 ONE RECEPTACLE AND I.O. ROUGH-IN SHALL BE MOUNTED AT STANDARD HEIGHT, ONE RECEPTACLE AND I.O. ROUGH-IN SHALL BE MOUNTED APPROX 66" CL AFF. REFER TO DETAIL SHEET E200. COORDINATE EXACT REQUIREMENTS & LOCATIONS WITH OWNER.
- 5 MOUNT RECEPTACLE 36" CL AFF.
- 6 MOUNT RECEPTACLE 60" CL AFF.
- 7 COORDINATE EXACT REQUIREMENTS WITH PLUMBING CONTRACTOR.
- 8 COORDINATE RECEPTACLE MOUNTING HEIGHT WITH OWNER.



4 CONFERENCE ROOM PLAN - ELECTRICAL - NEW WORK  
1/8"=1'-0"



KEY PLAN  
1"=60'-0" (APPROX)

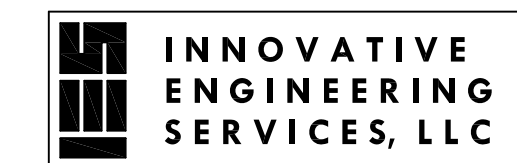


**PROJECT**  
BREAK ROOM AND  
CONFERENCE ALTERATIONS  
DANE COUNTY HWY GARAGE  
2302 FISH HATCHERY ROAD  
MADISON WI 53713

**DRAWING**  
FIRST FLOOR PLAN  
ELECTRICAL ALTERATIONS

**DATE**  
05.24.13

E100



9514 Union Valley Road  
Black Earth, Wisconsin 53515  
Phone: 608-279-1717  
Email: dhill.ies@tds.net

Architecture  
Planning

DorschnerAssociates, Inc.  
849 E. Washington Ave., Ste 112  
Madison, Wisconsin 53703

FIXTURE SCHEDULE						
TYPE	MANUFACTURER	CATALOG NO.	VOLTS	LAMPS	MT'G.	REMARKS
A	CORELITE	R3-W6-218-1C-UNV-24-T1	120	2-F3218/XL/SPX35/ECO	REC	2'x4' VOLUMETRIC TYPE TROFFER
B	METALUX	20C8RA-232A125-UNV-EB81-PAF	120	2-F3218/XL/SPX35/ECO	REC	2'x4' PRISMATIC LENSED TROFFER

PANEL SCHEDULE												
PANEL NO.	VOLTS	MAINS		BREAKERS						CABINET TYPE	ROOM	REMARKS
		BUS	BRKR	1 POLE		2 POLE		3 POLE				
				AMP	QTY	AMP	QTY	AMP	QTY			
P15	120/208V 3ø, 4W	100	100/3	20	17	20	1	---	---	FLUSH	SEE PLANS	MIN. 24 CIRCUIT PANELBOARD, MATCH AIC RATING OF EXISTING EQUIPMENT
P16	120/208V 3ø, 4W	100	100/3	20	9	---	---	30	1	SURFACE	SEE PLANS	MIN. 24 CIRCUIT PANELBOARD, MATCH AIC RATING OF EXISTING EQUIPMENT

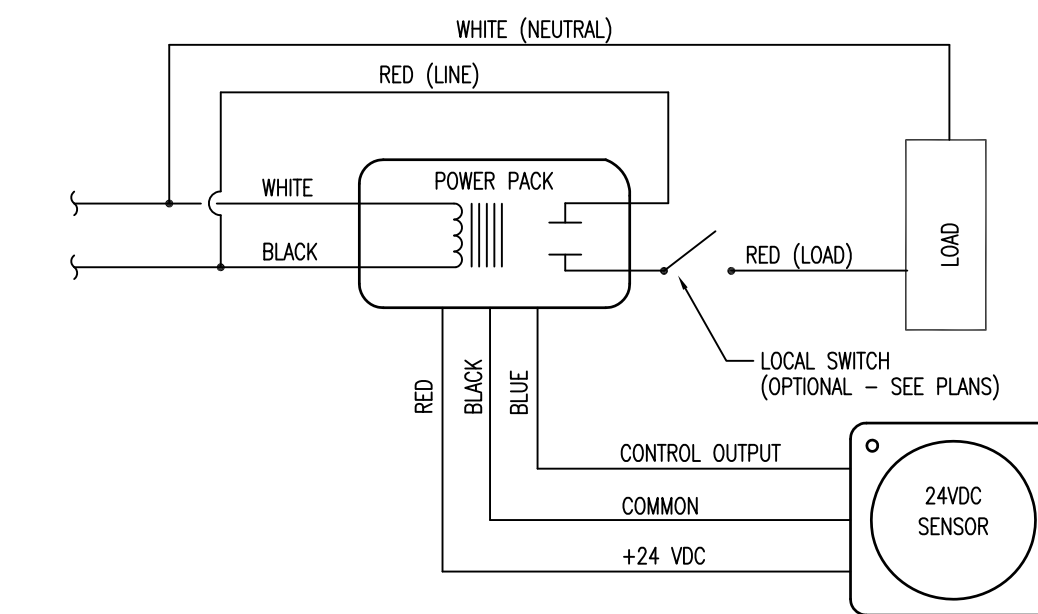
MOTOR SCHEDULE							
NO.	EQUIPMENT	HP/KW/A	VOLTS	CIRCUIT	FEEDER	BREAKER	REMARKS
1	RTU-1	21.0A	208, 3ø	P16-2,4,6	3ø/10, 1#100, 3/4" C	30/3	DISCONNECT SWITCH BY HVAC CONTRACTOR

ELECTRICAL SYMBOLS

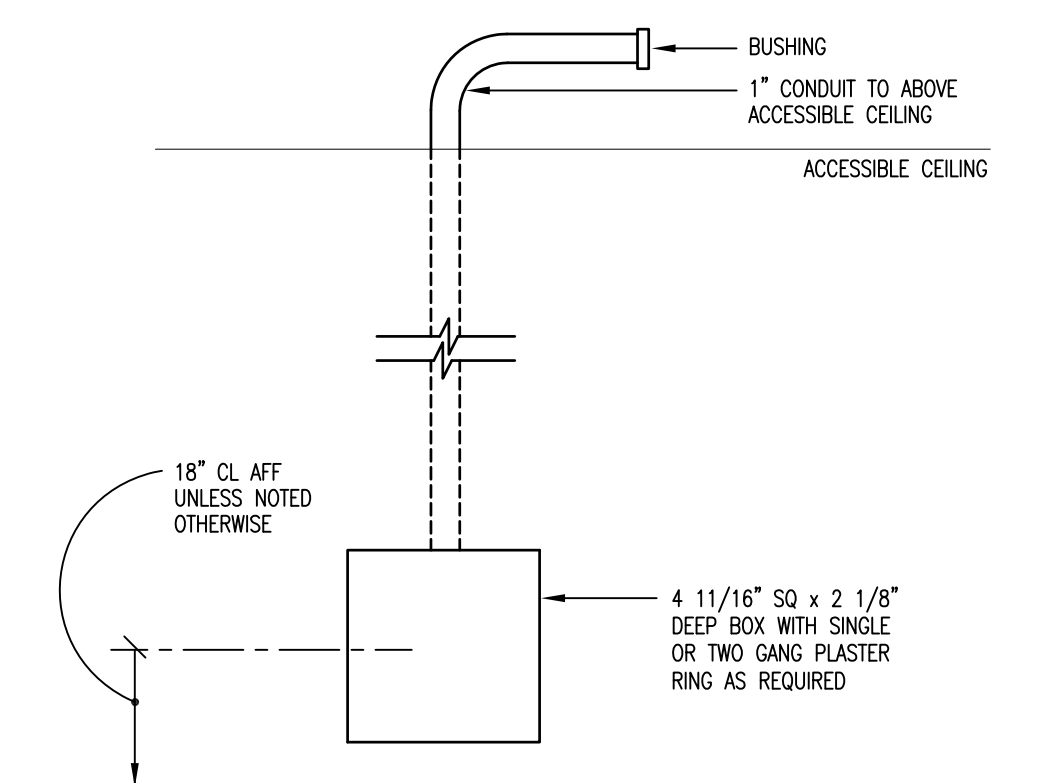
- TYPICAL ALL FIXTURES  
TYPE      CIRCUIT
- EQUIPMENT SHOWN LIGHT & DASHED INDICATES EXISTING TO BE REMOVED
  - EQUIPMENT SHOWN LIGHT INDICATES EXISTING TO REMAIN
  - FLUORESCENT FIXTURE, RECESSED
  - ⌘ TOGGLE SWITCH, SINGLE POLE
  - ⌘3 TOGGLE SWITCH, THREE WAY
  - ⌘⊞ OCCUPANCY SENSOR, DIRECTIONAL TYPE, CEILING MOUNTED
  - ⌘⊞ DUPLEX RECEPTACLE, "G" INDICATED GFCI TYPE
  - ⌘⊞ DUPLEX RECEPTACLE, SPLIT WIRED
  - ⌘⊞ DUPLEX RECEPTACLE, MOUNTED ABOVE COUNTER
  - ⌘⊞ DOUBLE DUPLEX RECEPTACLE
  - ⌘⊞ MOTOR CONNECTION, NUMBER CORRESPONDS WITH SCHEDULE
  - ⌘⊞ BRANCH CIRCUIT PANELBOARD
  - ⊞ DIRECT EQUIPMENT CONNECTION
  - ⊞ JUNCTION BOX
  - ⊞ P.A. SPEAKER
  - ⊞ STANDARD INFORMATION OUTLET ROUGH-IN
  - ⊞ FIRE ALARM SMOKE DETECTOR
  - ⊞ SECURITY SYSTEM OCCUPANCY SENSOR

ELECTRICAL ABBREVIATIONS

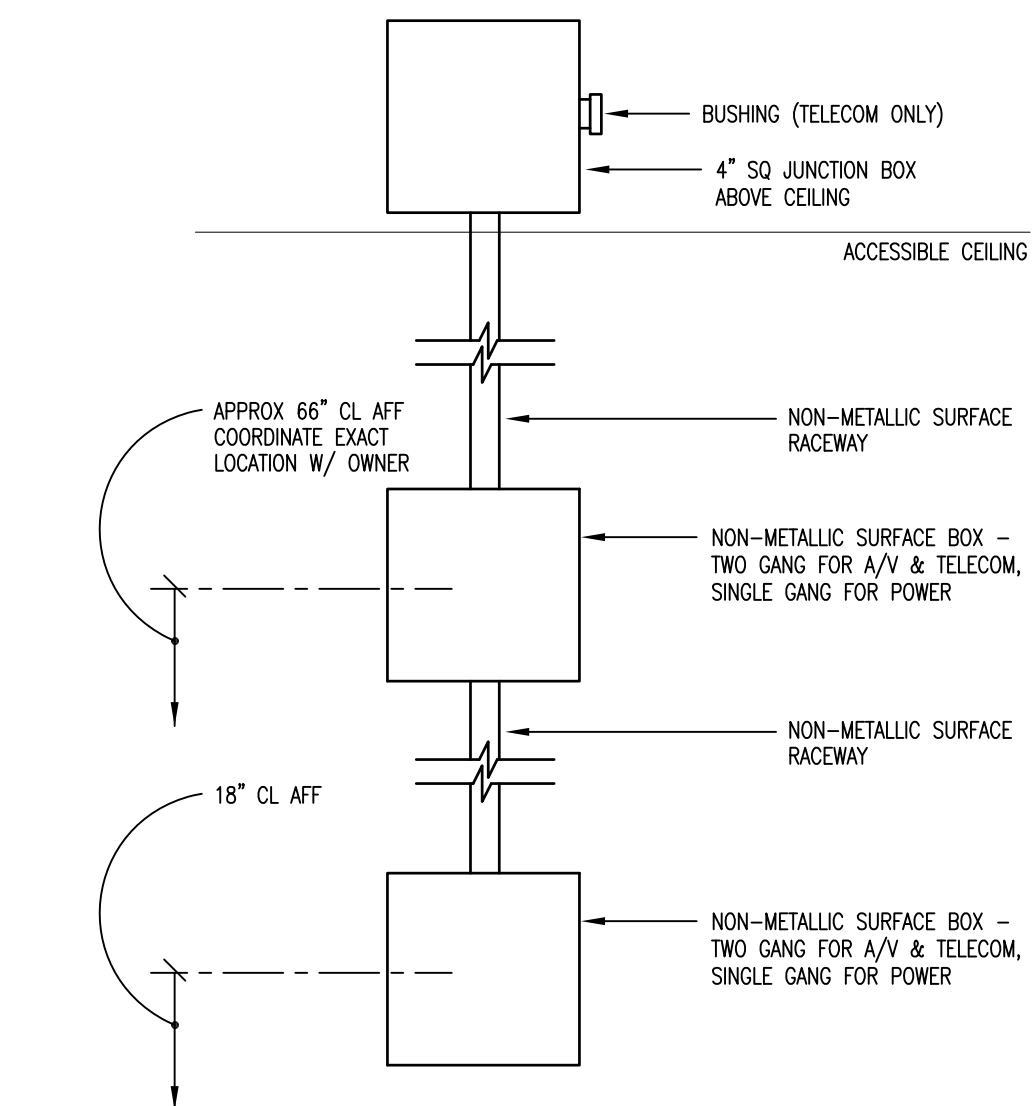
- AFF --- ABOVE FINISHED FLOOR
- AFG --- ABOVE FINISHED GRADE
- C --- CONDUIT
- G --- GROUND
- EC --- ELECTRICAL CONTRACTOR
- ETR --- EXISTING TO REMAIN
- REL --- RELOCATE
- TYP --- TYPICAL
- UNO --- UNLESS NOTED OTHERWISE
- WP --- WEATHERPROOF



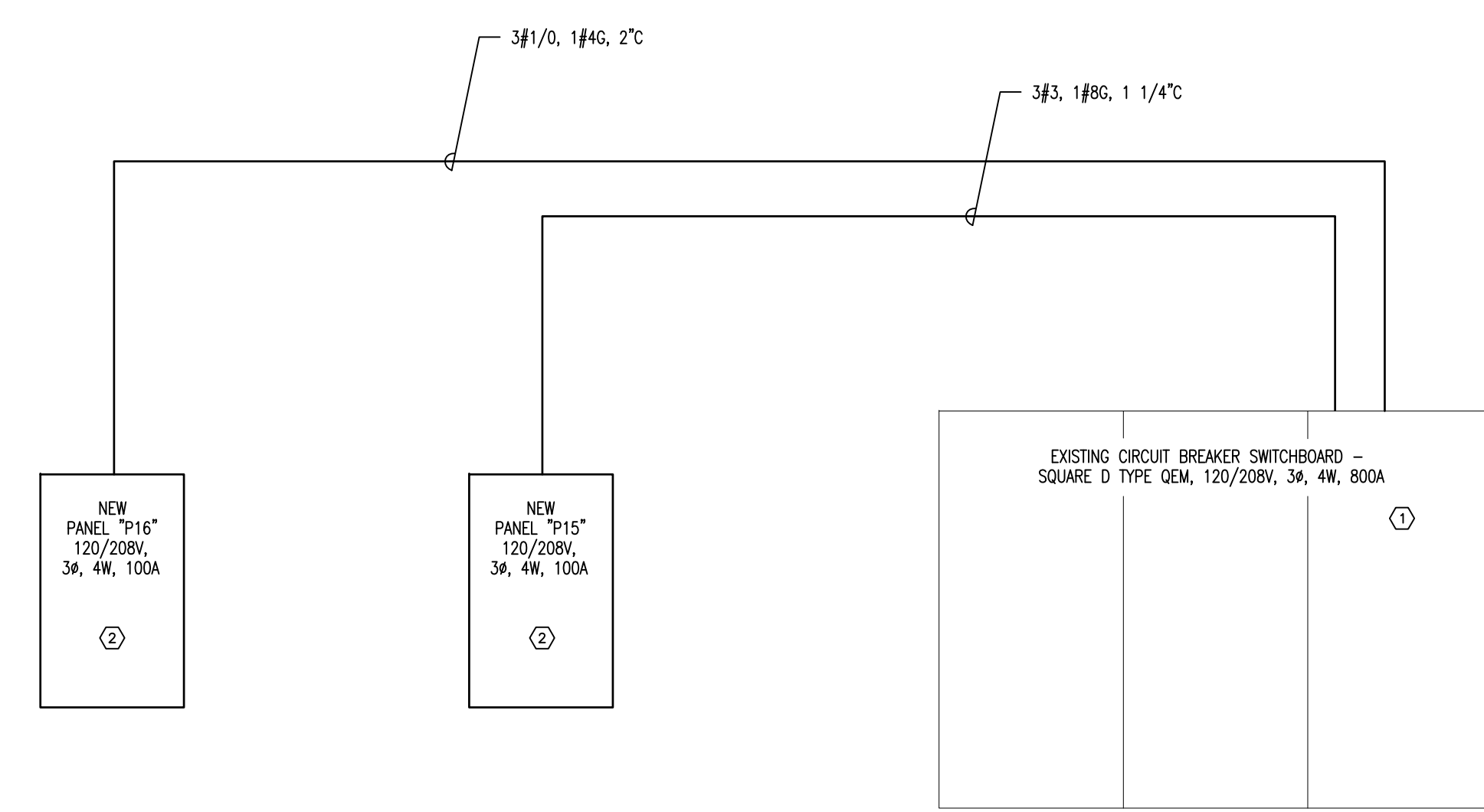
4 OCCUPANCY SENSOR WIRING DIAGRAM  
NO SCALE



1 STANDARD INFORMATION OUTLET ROUGH-IN DETAIL  
NO SCALE



2 A/V INFORMATION OUTLET/RECEPTACLE ROUGH-IN DETAIL  
NO SCALE



3 POWER RISER DIAGRAM  
NO SCALE

POWER RISER DIAGRAM NOTES:

- 1 PROVIDE TWO NEW "FH" FRAME 100/3 BREAKERS TO FEED NEW PANELBOARDS AS INDICATED. AIC RATING SHALL MATCH EXISTING BREAKERS. MOUNT NEW BREAKERS IN POSITIONS #1 AND #3.
- 2 REFER TO PANEL SCHEDULE FOR PANELBOARD DETAILS.

PROJECT  
BREAK ROOM AND  
CONFERENCE ALTERATIONS  
DANE COUNTY HWY GARAGE  
2302 FISH HATCHERY ROAD  
MADISON WI 53713

DRAWING  
ELECTRICAL SYMBOLS,  
SCHEDULES, AND DETAILS

DATE  
05.24.13