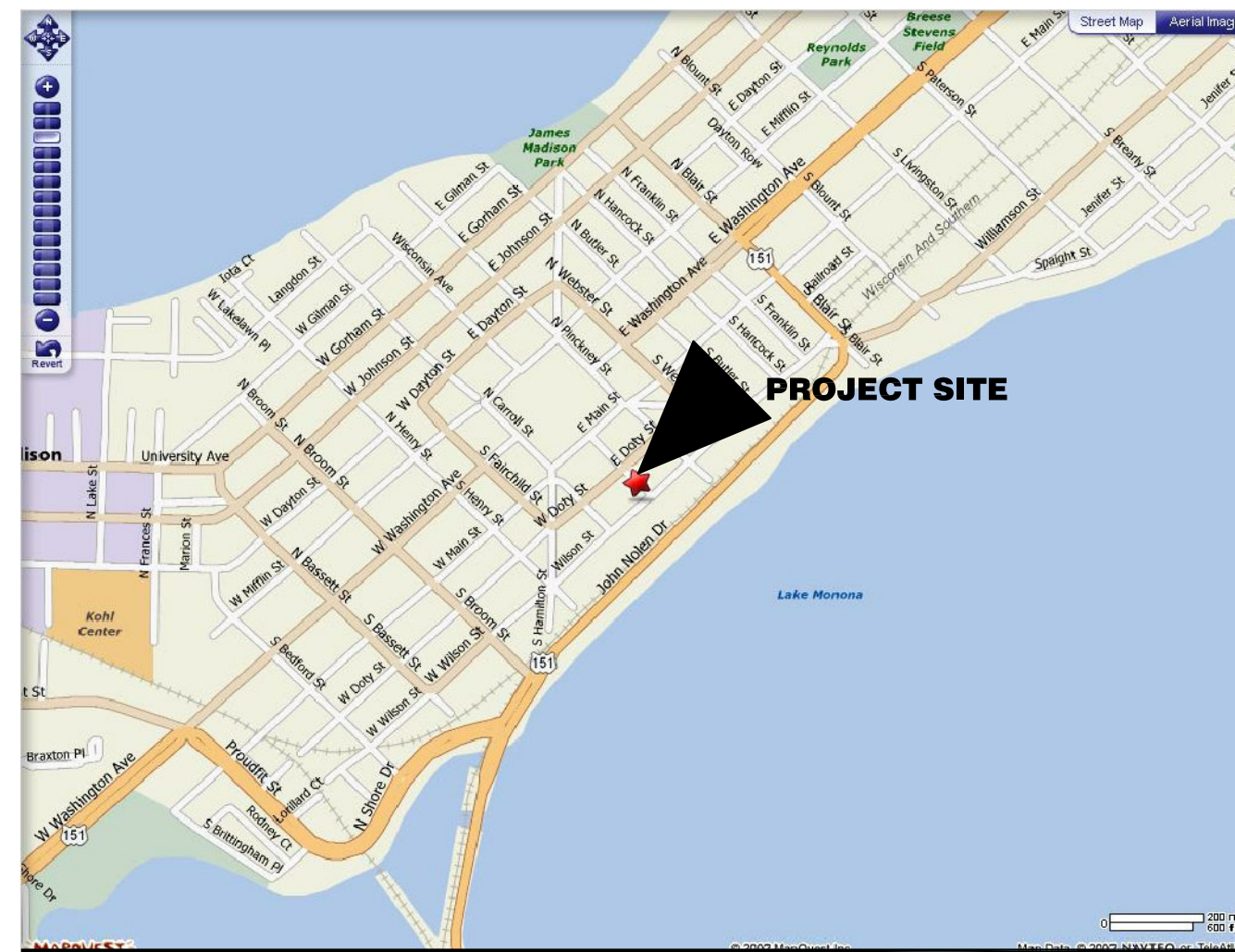
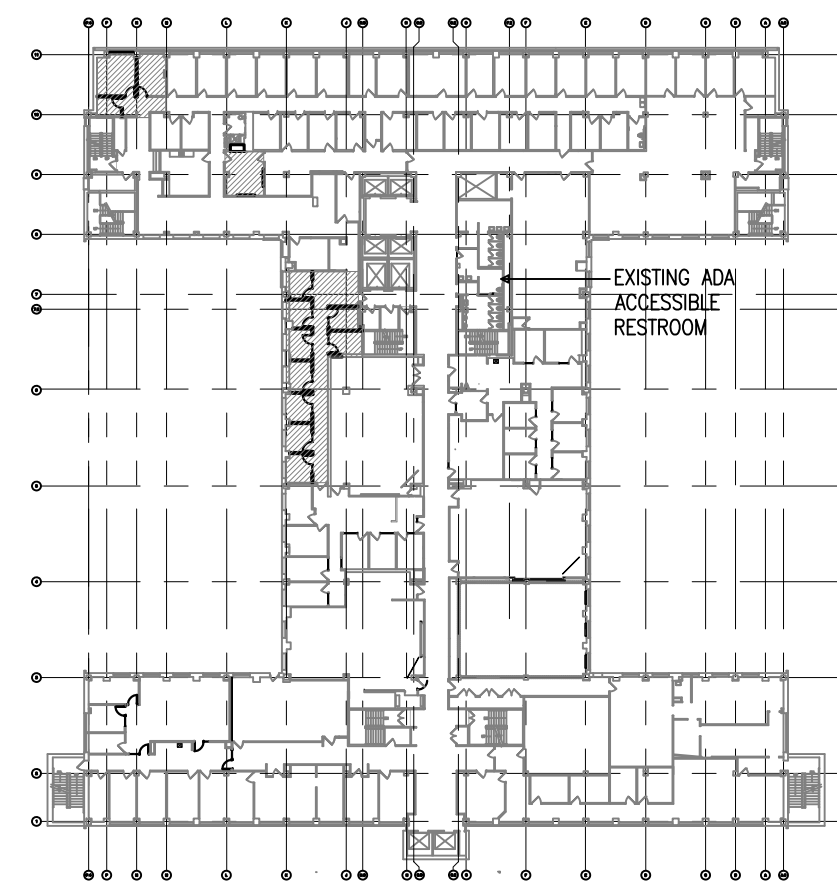


CHILD SUPPORT AGENCY REMODEL - SUITE 365 CITY-COUNTY BUILDING 210 MARTIN LUTHER KING, JR. BLVD. MADISON, WISCONSIN



MADISON, WISCONSIN



THIRD FLOOR PLAN

GENERAL NOTE:
1. ADA ACCESSIBLE ROUTE EXTENDS FROM BUILDING DOWN ADA ACCESSIBLE RAMP TO ADA ACCESSIBLE PARKING STALL ON MARTIN LUTHER KING JR BOULEVARD.

EXISTING ADA ACCESSIBLE RESTROOM

ABBREVIATIONS

ADA	AMERICANS WITH DISABILITIES ACT
A.F.F.	ABOVE FINISHED FLOOR
AL	ALUMINUM
AP	ACCESS PANEL
CG	CORNER GUARD
CJ	CONTROL JOINT
CMU	CONCRETE MASONRY UNIT
CONC	CONCRETE
CPT	CARPET
CT	CERAMIC TILE
CUH	CABINET UNIT HEATER
EJ	EXPANSION JOINT
EWC	ELECTRIC WATER COOLER
FD	FLOOR DRAIN
FO	FOUNDATION DRAIN SYSTEM FLUSHOUT
FRT	FIRE TREATED
FX-#	FIRE EXTINGUISHER AND TYPE
GWB	GYPSUM WALL BOARD
HM	HOLLOW METAL
MB	MARKER BOARD
TB	TACK BOARD
BB	BULLETIN BOARD
M.O.	MASONRY OPENING
N.I.C.	NOT IN CONTRACT
O.F.C.I.	OWNER FURNISHED CONTRACTOR INSTALLED
O.F.O.I.	OWNER FURNISHED OWNER INSTALLED
OPP	OPPOSITE
PLAM	PLASTIC LAMINATE
REV	REVERSE
R.O.	ROUGH OPENING
S.S.	STAINLESS STEEL
TZO	TERRAZZO
U.N.O.	UNLESS NOTED OTHERWISE
V.I.F.	VERIFY IN FIELD
VCT	VINYL COMPOSITION TILE
WD	WOOD
WP	WATER PROOFING
WPT	WORK POINT

MAJOR USE & OCCUPANCY CLASSIFICATION: B
CONSTRUCTION CLASSIFICATION: IB
GROSS FLOOR AREA OF RENOVATION: 1,285 GSF
SPRINKLERED
MAXIMUM EXIT ACCESS TRAVEL DISTANCE: 300'

INDEX OF DRAWINGS

GENERAL	
G1.0	COVER SHEET AND INDEX OF DRAWINGS
DEMOLITION	
D2.1	PARTIAL THIRD FLOOR DEMOLITION PLAN
D3.1	PARTIAL THIRD FLOOR DEMOLITION REFLECTED CEILING PLAN
ARCHITECTURAL	
A2.1	PARTIAL THIRD FLOOR PLAN
A3.1	PARTIAL THIRD FLOOR REFLECTED CEILING PLAN
A7.0	INTERIOR ELEVATIONS, PARTITION TYPES, DETAILS & DOOR SCHEDULE
A9.1	PARTIAL THIRD FLOOR FINISH PLAN
PLUMBING	
F0.1	FIRE PROTECTION SYMBOLS & ABBREVIATIONS
F1.1	PARTIAL FIRE PROTECTION DEMOLITION FLOOR PLAN
F1.2	PARTIAL FIRE PROTECTION FLOOR PLAN
HVAC	
M0.1	MECHANICAL SYMBOLS AND ABBREVIATIONS
M0.2	MECHANICAL GENERAL NOTES
M1.1	PARTIAL MECHANICAL DEMOLITION FLOOR PLAN
M1.2	PARTIAL MECHANICAL FLOOR PLAN
M6.1	MECHANICAL SCHEDULE AND DETAILS
ELECTRICAL	
E0.0	ELECTRICAL SYMBOLS, ABBREVIATIONS AND SHEET INDEX
E1.0	PARTIAL THIRD FLOOR ELECTRICAL DEMOLITION PLAN
E1.1	PARTIAL THIRD FLOOR LIGHTING PLAN
E1.2	PARTIAL THIRD FLOOR POWER/SYSTEMS PLAN
E1.3	ELECTRICAL DETAILS

ARCHITECTURAL SYMBOLS AND LEGEND

X/XXX	DETAIL REFERENCE SHEET REFERENCE DETAIL NUMBER
X/XXX	WALL SECTION REFERENCE SHEET REFERENCE DETAIL NUMBER
X/XXXX	WALL SECTION REFERENCE SHEET REFERENCE DETAIL NUMBER
X	ELEVATION REFERENCE
X	PARTITION TYPE REF. SEE SHEET A7.0
==	NEW WALLS
X	WINDOW TYPES SEE A7.0
---	1 HOUR FIRE RATED WALL
---	2 HOUR FIRE RATED WALL
100	DOOR SWING w/NUMBER. SEE A7.0
100	EXISTING DOOR SWING w/NUMBER. SEE A7.0
⚠	REVISIONS
FX-1	RECESSED FIRE EXTINGUISHER
FX-2	SURFACE MOUNT FIRE EXTINGUISHER
x70-1	SPOT ELEVATION (FEET-INCHES)
x70.83	SPOT ELEVATION (FEET.DECIMAL)
OFFICE 012	ROOM NAME & NUMBER



Architecture
Planning

DorschnerAssociates, Inc.
122 W Washington Ave, Suite 100
Madison, Wisconsin 53703

ISSUED

ISSUED FOR BID 04.27.21

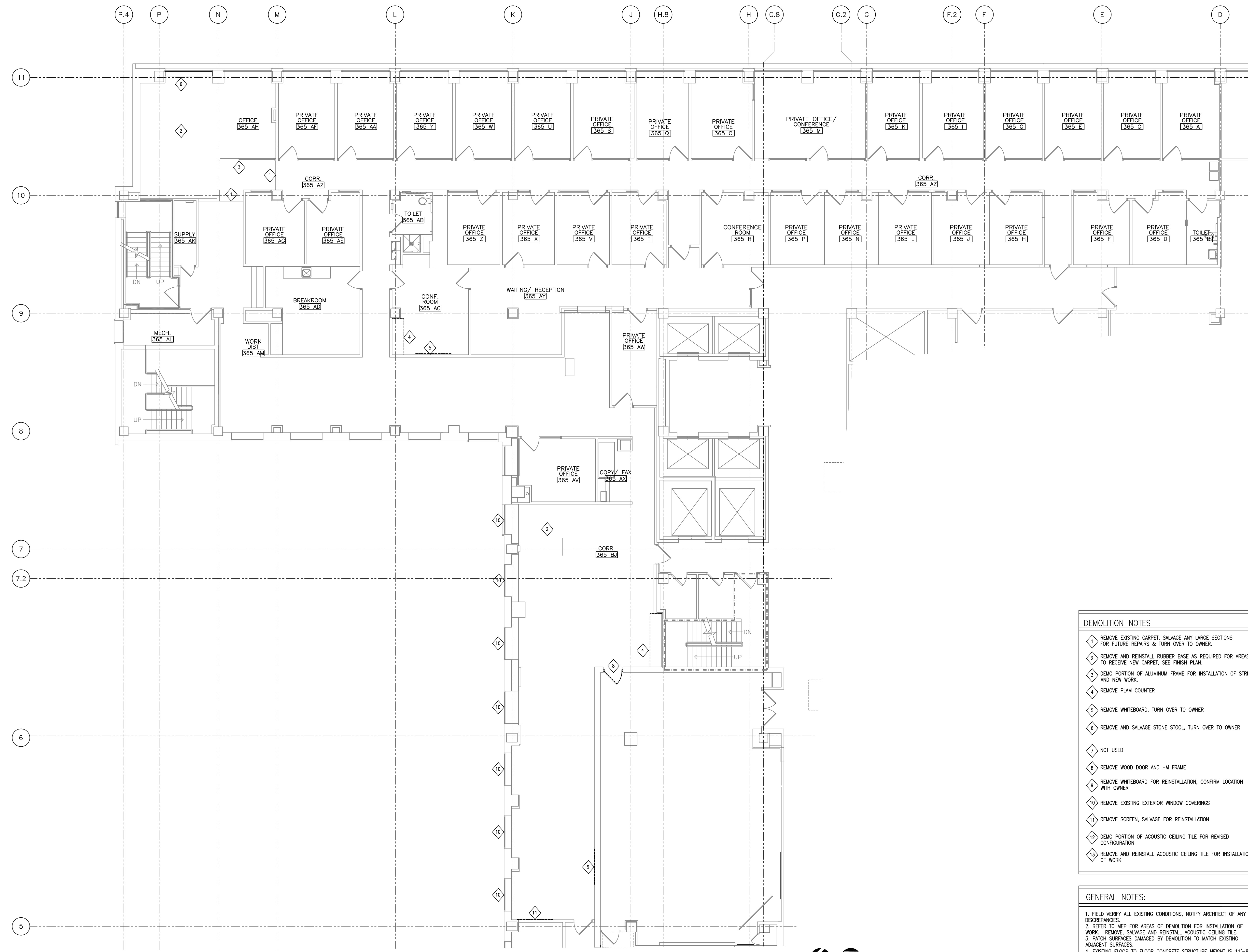
Dane County Dept. of Public Works
Highway and Transportation
Bid No. 320028

PROJECT
CHILD SUPPORT AGENCY
REMODEL - SUITE 365
CITY-COUNTY BUILDING
210 MARTIN LUTHER KING,
JR. BLVD., MADISON, WI

DRAWING
PARTIAL THIRD FLOOR
DEMOLITION PLAN

DATE
08.20.20

D2.1



DEMOLITION NOTES	
1	REMOVE EXISTING CARPET, SALVAGE ANY LARGE SECTIONS FOR FUTURE REPAIRS & TURN OVER TO OWNER.
2	REMOVE AND REINSTALL RUBBER BASE AS REQUIRED FOR AREAS TO RECEIVE NEW CARPET, SEE FINISH PLAN.
3	DEMO PORTION OF ALUMINUM FRAME FOR INSTALLATION OF STRIKE AND NEW WORK.
4	REMOVE PLAM COUNTER
5	REMOVE WHITEBOARD, TURN OVER TO OWNER
6	REMOVE AND SALVAGE STONE STOOL, TURN OVER TO OWNER
7	NOT USED
8	REMOVE WOOD DOOR AND HM FRAME
9	REMOVE WHITEBOARD FOR REINSTALLATION, CONFIRM LOCATION WITH OWNER
10	REMOVE EXISTING EXTERIOR WINDOW COVERINGS
11	REMOVE SCREEN, SALVAGE FOR REINSTALLATION
12	DEMO PORTION OF ACOUSTIC CEILING TILE FOR REVISED CONFIGURATION
13	REMOVE AND REINSTALL ACOUSTIC CEILING TILE FOR INSTALLATION OF WORK

GENERAL NOTES:	
1.	FIELD VERIFY ALL EXISTING CONDITIONS, NOTIFY ARCHITECT OF ANY DISCREPANCIES.
2.	REFER TO MEP FOR AREAS OF DEMOLITION FOR INSTALLATION OF WORK. REMOVE, SALVAGE AND REINSTALL ACOUSTIC CEILING TILE.
3.	PATCH SURFACES DAMAGED BY DEMOLITION TO MATCH EXISTING ADJACENT SURFACES.
4.	EXISTING FLOOR TO FLOOR CONCRETE STRUCTURE HEIGHT IS 11'-8" ON THE THIRD FLOOR.

1 PARTIAL THIRD FLOOR DEMOLITION PLAN
1/8"=1'-0"



ISSUED

ISSUED FOR BID 04.27.21

Dane County Dept. of Public Works
Highway and Transportation
Bid No. 320028

PROJECT
CHILD SUPPORT AGENCY
REMODEL - SUITE 365
CITY-COUNTY BUILDING
210 MARTIN LUTHER KING,
JR. BLVD., MADISON, WI

DRAWING
PARTIAL THIRD FLOOR
DEMOLITION REFLECTED
CEILING PLAN
DATE
08.20.20

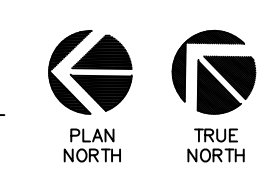


REFLECTED CEILING PLAN SYMBOLS	
	EXISTING ACOUSTIC CEILING TILE. REMOVE AND REINSTALL EXISTING ACOUSTIC CEILING TILE FOR INSTALLATION OF WORK
	DEMO LIGHT FIXTURE, SEE ELECTRICAL FOR MORE INFORMATION
	DEMO HVAC SUPPLY DIFFUSER, SEE MECHANICAL FOR MORE INFORMATION
	DEMO HVAC RETURN DIFFUSER, SEE MECHANICAL FOR MORE INFORMATION
	DEMO PENDANT LIGHT FIXTURE, SEE ELECTRICAL FOR MORE INFORMATION
	EXISTING PENDANT LIGHT FIXTURE, SEE ELECTRICAL FOR MORE INFORMATION
	DEMO ACOUSTICAL CEILING TILE, SEE MEP FOR MORE INFORMATION

DEMOLITION NOTES	
1	REMOVE EXISTING CARPET, SALVAGE ANY LARGE SECTIONS FOR FUTURE REPAIRS & TURN OVER TO OWNER.
2	REMOVE AND REINSTALL RUBBER BASE AS REQUIRED FOR AREAS TO RECEIVE NEW CARPET, SEE FINISH PLAN.
3	DEMO PORTION OF ALUMINUM FRAME FOR INSTALLATION OF STRIKE AND NEW WORK.
4	REMOVE PLAM COUNTER
5	REMOVE WHITEBOARD, TURN OVER TO OWNER
6	REMOVE AND SALVAGE STONE STOOL, TURN OVER TO OWNER
7	NOT USED
8	REMOVE WOOD DOOR AND HM FRAME
9	REMOVE WHITEBOARD FOR REINSTALLATION, CONFIRM LOCATION WITH OWNER
10	REMOVE EXISTING EXTERIOR WINDOW COVERINGS
11	REMOVE SCREEN, SALVAGE FOR REINSTALLATION
12	DEMO PORTION OF ACOUSTIC CEILING TILE FOR REVISED CONFIGURATION
13	REMOVE AND REINSTALL ACOUSTIC CEILING TILE FOR INSTALLATION OF WORK

GENERAL NOTES:	
1.	FIELD VERIFY ALL EXISTING CONDITIONS, NOTIFY ARCHITECT OF ANY DISCREPANCIES.
2.	REFER TO MEP FOR AREAS OF DEMOLITION FOR INSTALLATION OF WORK. REMOVE, SALVAGE AND REINSTALL ACOUSTIC CEILING TILE.
3.	PATCH SURFACES DAMAGED BY DEMOLITION TO MATCH EXISTING ADJACENT SURFACES.
4.	EXISTING FLOOR TO FLOOR CONCRETE STRUCTURE HEIGHT IS 11'-8" ON THE THIRD FLOOR.

1 PARTIAL THIRD FLOOR DEMOLITION REFLECTED CEILING PLAN
1/8"=1'-0"



Architecture
Planning

DorschnerAssociates, Inc.
122 W Washington Ave, Suite 100
Madison, Wisconsin 53703

ISSUED

ISSUED FOR BID 04.27.21

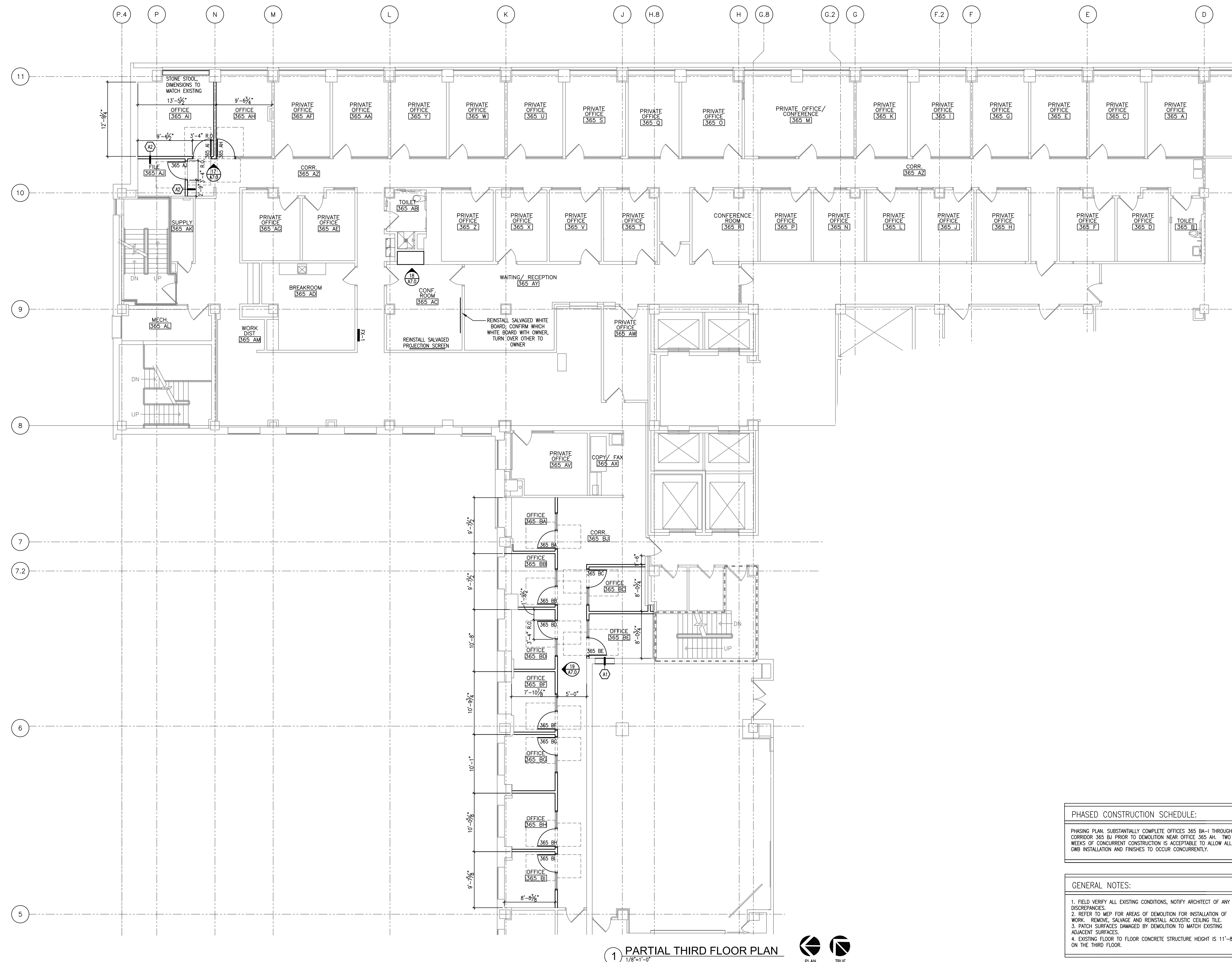
Dane County Dept. of Public Works
Highway and Transportation
Bid No. 320028

PROJECT
CHILD SUPPORT AGENCY
REMODEL - SUITE 365
CITY-COUNTY BUILDING
210 MARTIN LUTHER KING,
JR. BLVD., MADISON, WI

DRAWING
PARTIAL THIRD FLOOR
PLAN

DATE
08.20.20

A2.1



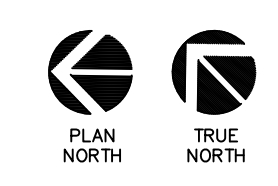
PHASED CONSTRUCTION SCHEDULE:

PHASING PLAN. SUBSTANTIALLY COMPLETE OFFICES 365 BA-1 THROUGH CORRIDOR 365 BJ PRIOR TO DEMOLITION NEAR OFFICE 365 AH. TWO WEEKS OF CONCURRENT CONSTRUCTION IS ACCEPTABLE TO ALLOW ALL GWB INSTALLATION AND FINISHES TO OCCUR CONCURRENTLY.

GENERAL NOTES:

1. FIELD VERIFY ALL EXISTING CONDITIONS, NOTIFY ARCHITECT OF ANY DISCREPANCIES.
2. REFER TO MEP FOR AREAS OF DEMOLITION FOR INSTALLATION OF WORK. REMOVE, SALVAGE AND REINSTALL ACOUSTIC CEILING TILE.
3. PATCH SURFACES DAMAGED BY DEMOLITION TO MATCH EXISTING ADJACENT SURFACES.
4. EXISTING FLOOR TO FLOOR CONCRETE STRUCTURE HEIGHT IS 11'-8" ON THE THIRD FLOOR.

1 PARTIAL THIRD FLOOR PLAN
1/8"=1'-0"



Architecture
Planning

DorschnerAssociates, Inc.
122 W Washington Ave, Suite 100
Madison, Wisconsin 53703

ISSUED

ISSUED FOR BID 04.27.21

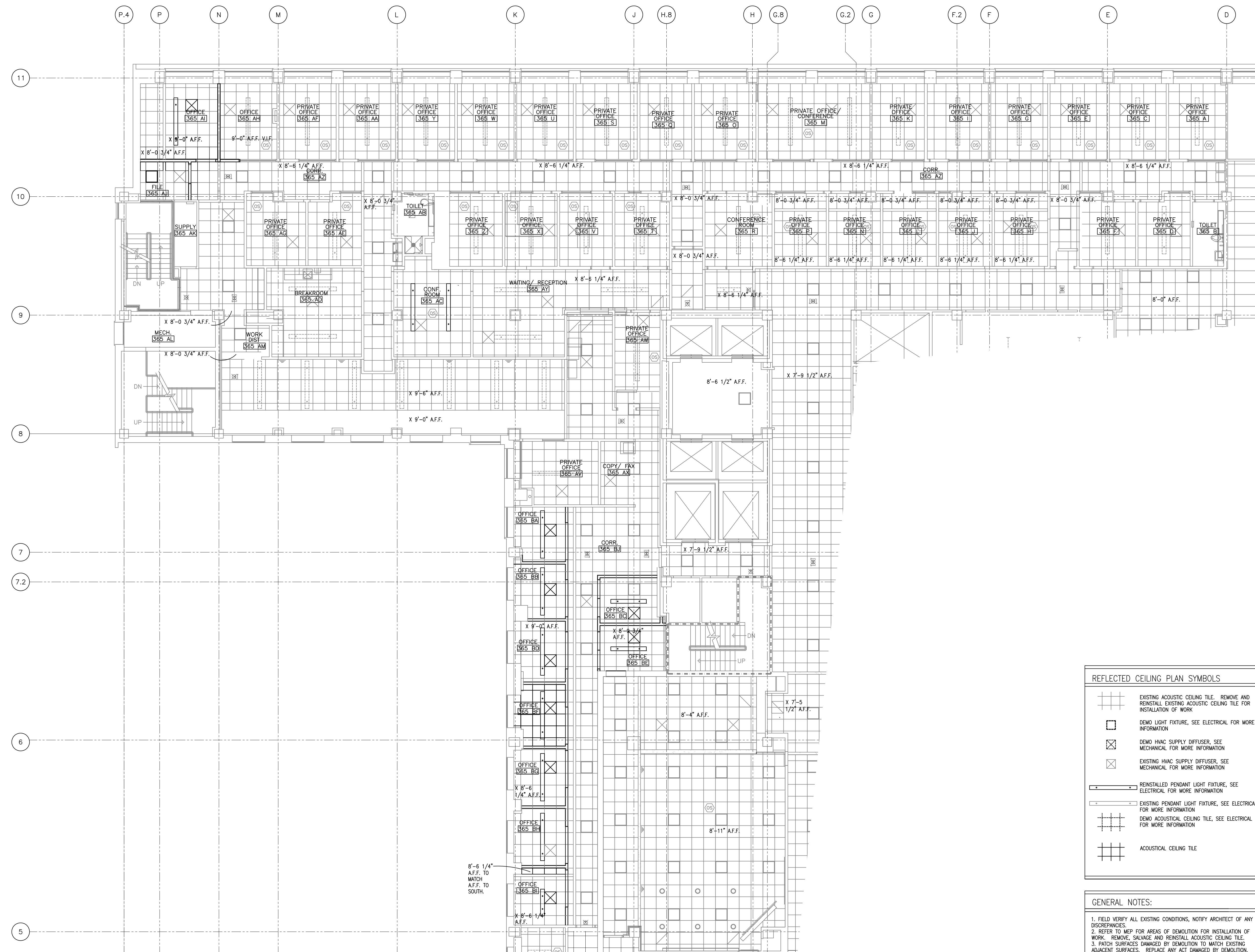
Dane County Dept. of Public Works
Highway and Transportation
Bid No. 320028

PROJECT
CHILD SUPPORT AGENCY
REMODEL - SUITE 365
CITY-COUNTY BUILDING
210 MARTIN LUTHER KING,
JR. BLVD., MADISON, WI

DRAWING
PARTIAL THIRD FLOOR
REFLECTED CEILING PLAN

DATE
08.20.20

A3.1



REFLECTED CEILING PLAN SYMBOLS	
	EXISTING ACOUSTIC CEILING TILE. REMOVE AND REINSTALL EXISTING ACOUSTIC CEILING TILE FOR INSTALLATION OF WORK
	DEMO LIGHT FIXTURE, SEE ELECTRICAL FOR MORE INFORMATION
	DEMO HVAC SUPPLY DIFFUSER, SEE MECHANICAL FOR MORE INFORMATION
	EXISTING HVAC SUPPLY DIFFUSER, SEE MECHANICAL FOR MORE INFORMATION
	REINSTALLED PENDANT LIGHT FIXTURE, SEE ELECTRICAL FOR MORE INFORMATION
	EXISTING PENDANT LIGHT FIXTURE, SEE ELECTRICAL FOR MORE INFORMATION
	DEMO ACOUSTICAL CEILING TILE, SEE ELECTRICAL FOR MORE INFORMATION
	ACOUSTICAL CEILING TILE

GENERAL NOTES:	
1.	FIELD VERIFY ALL EXISTING CONDITIONS, NOTIFY ARCHITECT OF ANY DISCREPANCIES.
2.	REFER TO MEP FOR AREAS OF DEMOLITION FOR INSTALLATION OF WORK. REMOVE, SALVAGE AND REINSTALL ACOUSTIC CEILING TILE.
3.	PATCH SURFACES DAMAGED BY DEMOLITION TO MATCH EXISTING ADJACENT SURFACES. REPLACE ANY ACT DAMAGED BY DEMOLITION.
4.	EXISTING FLOOR TO FLOOR CONCRETE STRUCTURE HEIGHT IS 11'-8" ON THE THIRD FLOOR.

1 PARTIAL THIRD FLOOR REFLECTED CEILING PLAN
1/8"=1'-0"
PLAN NORTH TRUE NORTH

Architecture
Planning

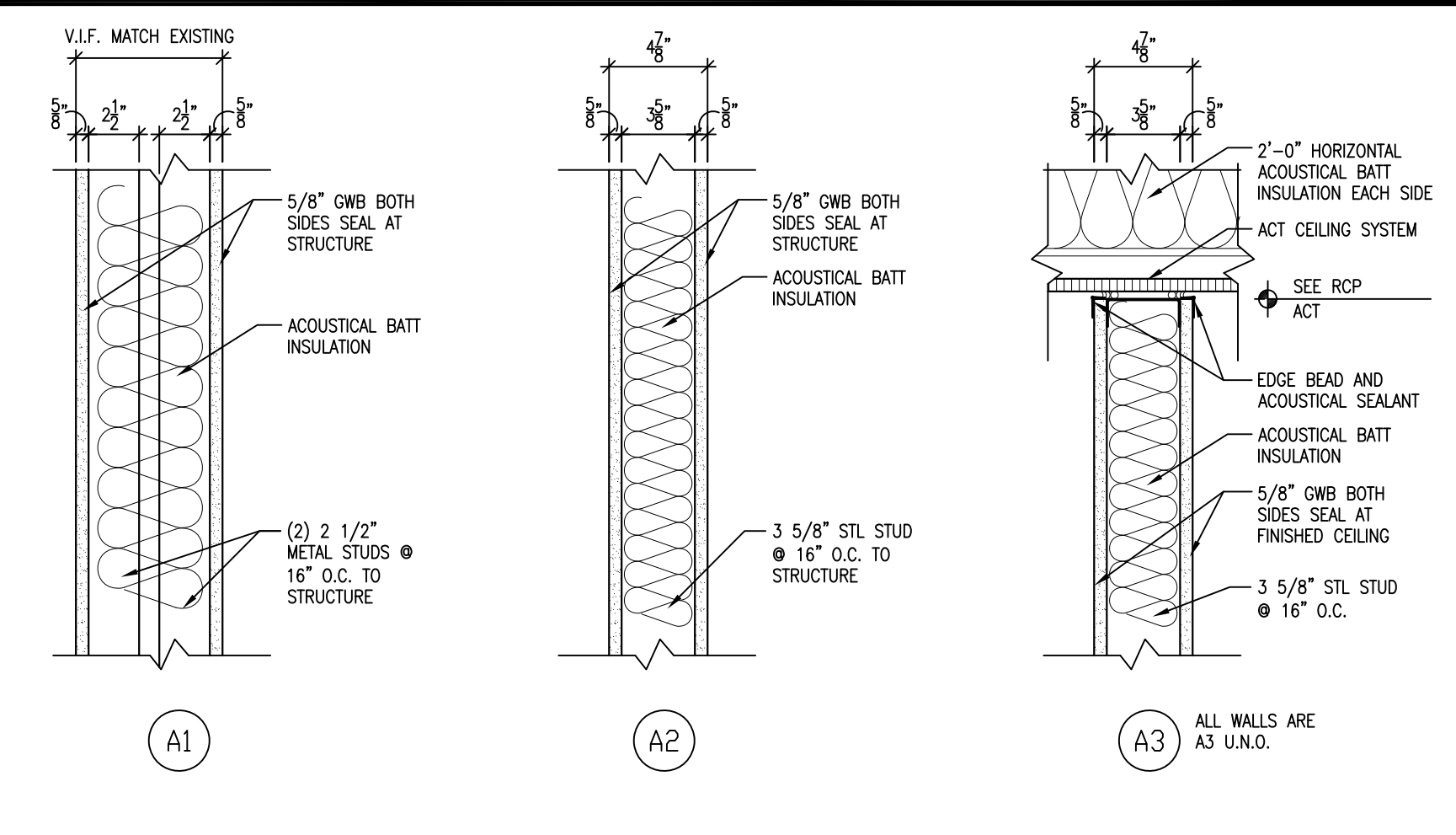
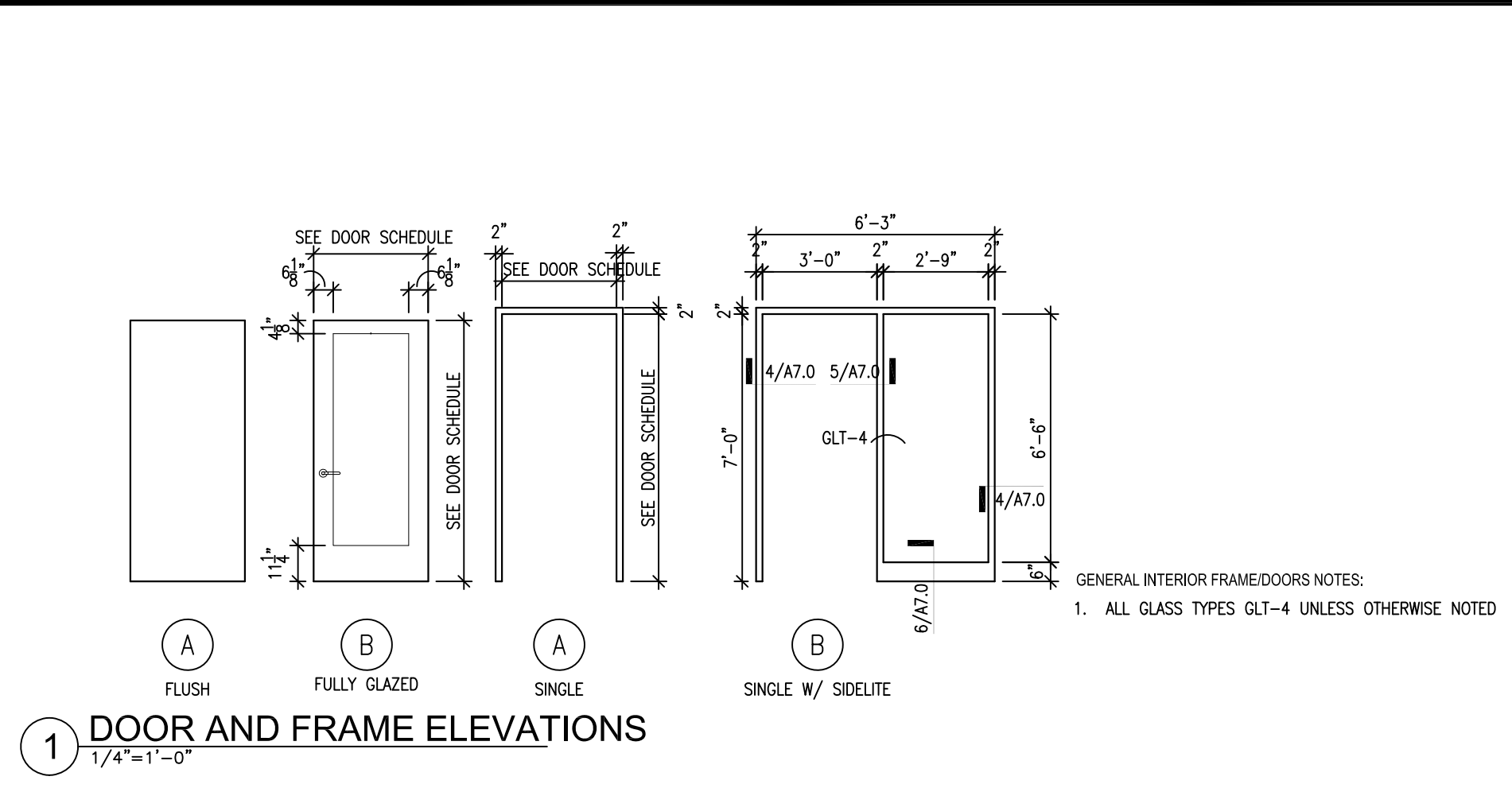
DorschnerAssociates, Inc.
122 W Washington Ave, Suite 100
Madison, Wisconsin 53703

ISSUED
ISSUED FOR BID 04.27.21

Dane County Dept. of Public Works
Highway and Transportation
Bid No. 320028

PROJECT
CHILD SUPPORT AGENCY
REMODEL - SUITE 365
CITY-COUNTY BUILDING
210 MARTIN LUTHER KING,
JR. BLVD., MADISON, WI

DRAWING
INTERIOR ELEVATIONS,
PARTITION TYPES, DETAILS
& DOOR SCHEDULE
DATE
08.20.20



DOOR AND FRAME SCHEDULE

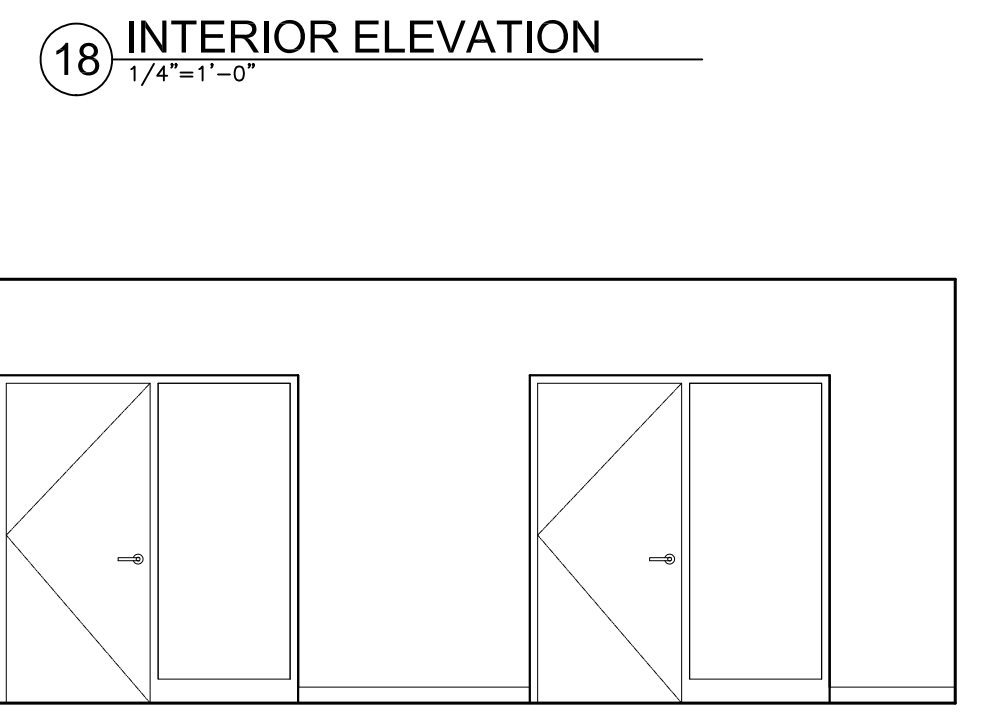
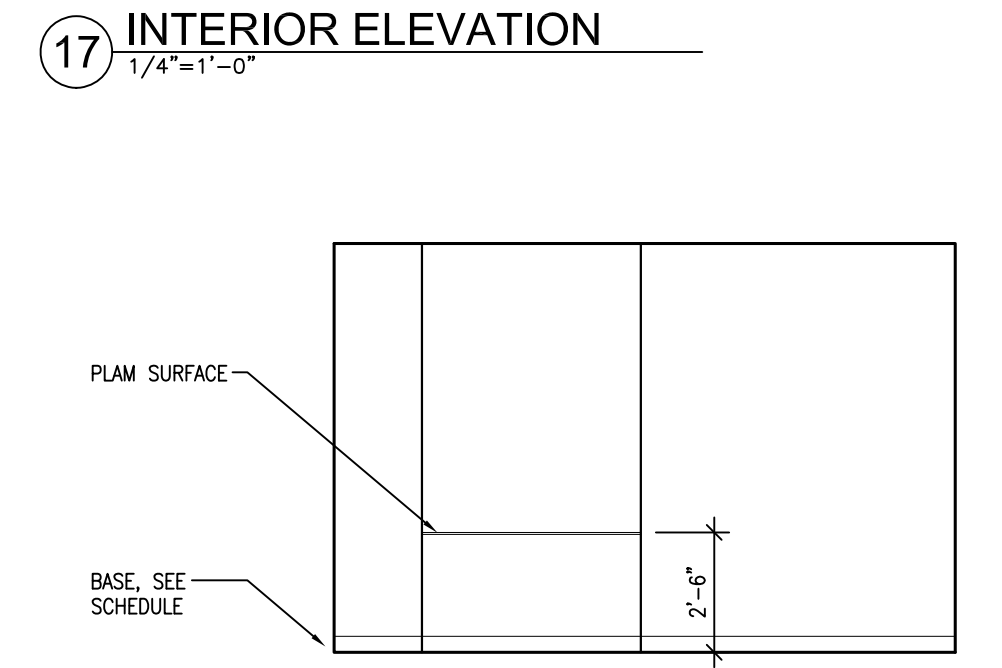
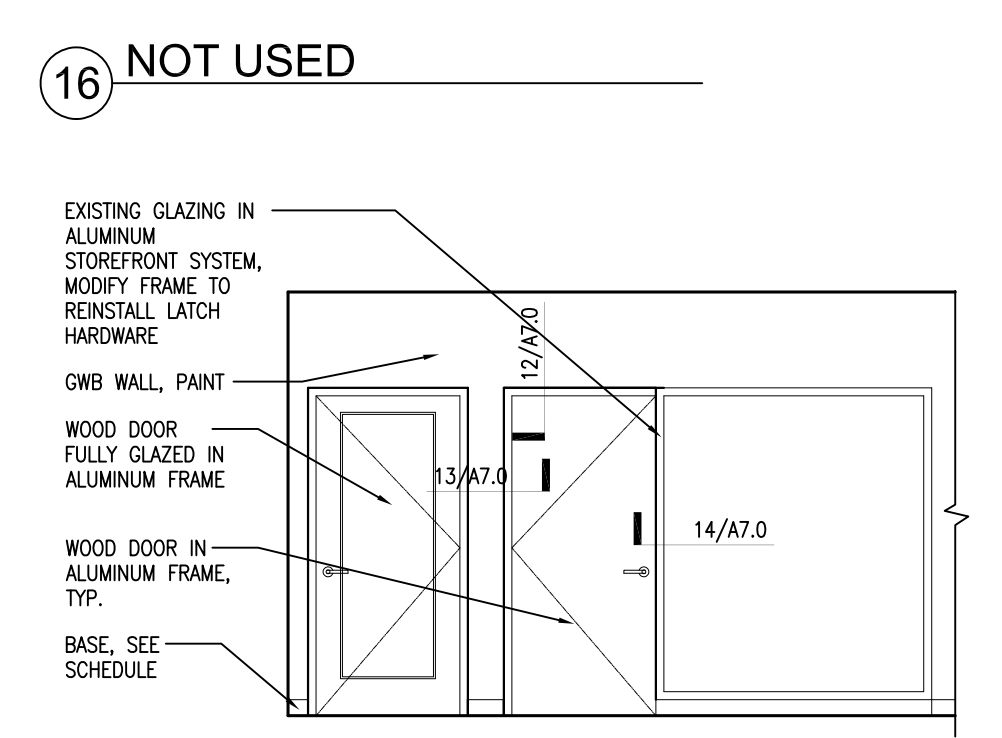
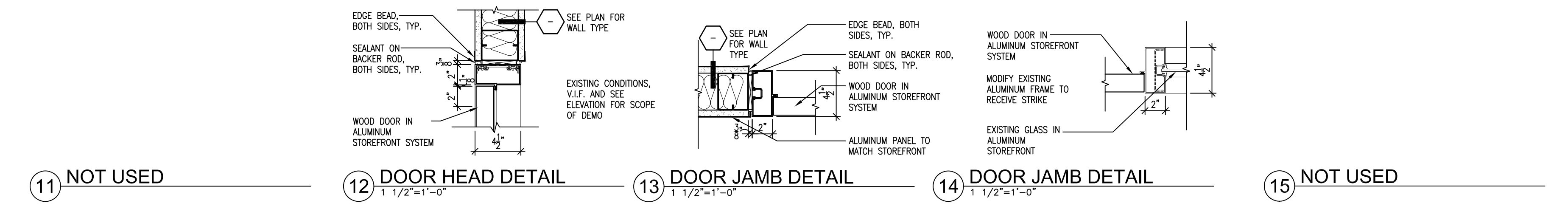
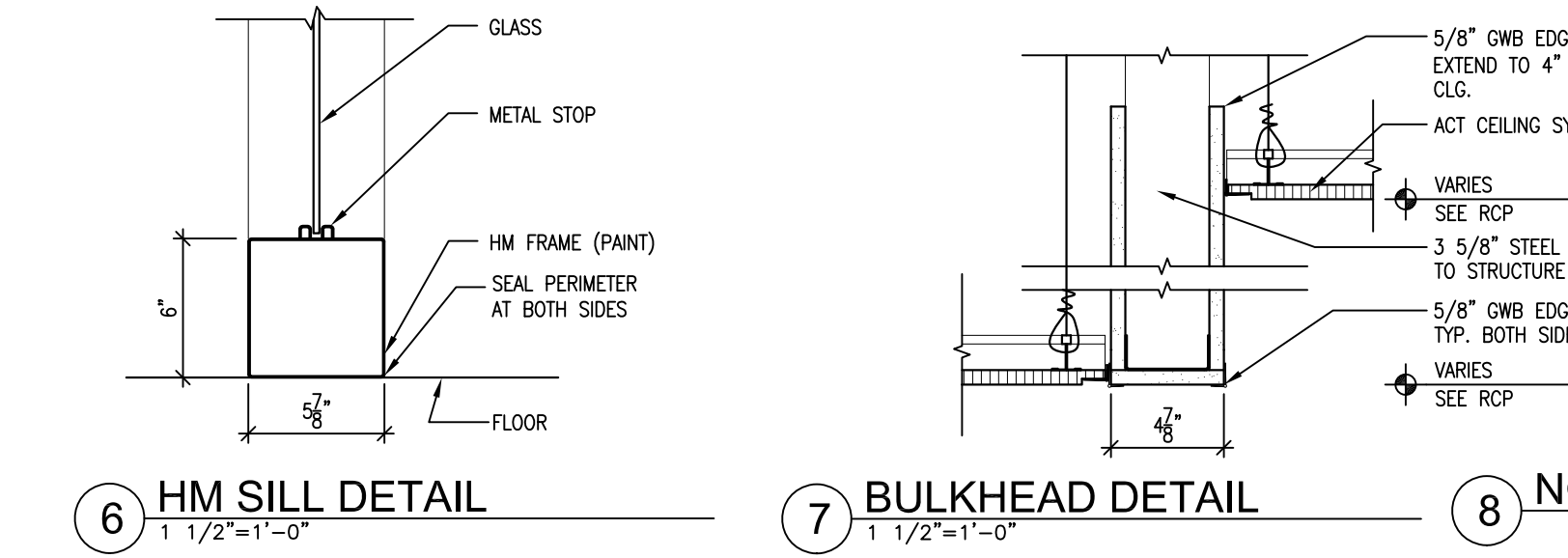
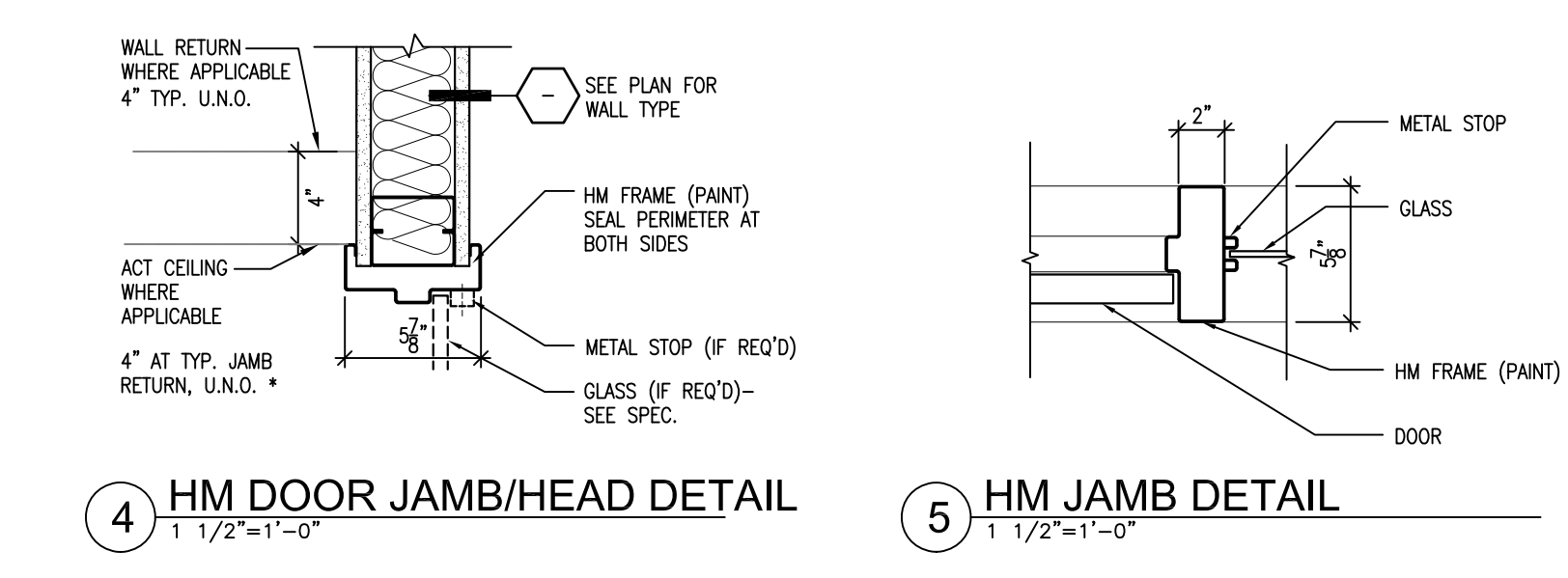
DOOR NO.	QNTY	DOOR					FRAME					FIRE LABEL	HWR GROUP	REMARKS	
		W	H	T	MATERIAL	ELEV	GLASS	LOUVER OR UNDERCUT	MATL	ELEV	HEAD				JAMB
365AH	1	3-0	7-0	--	WD	A	--	--	AL	17/A7.0	12/A7.0	13/14/A7.0	--	1	--
365AI	1	3-0	7-0	--	WD	B	GLT-4	--	AL	A	12/A7.0	13/A7.0	--	1	--
365AJ	1	3-0	7-0	--	WD	A	--	--	AL	A	12/A7.0	13/A7.0	--	2	--
365BA	1	3-0	7-0	--	WD	A	--	--	HM	B	4/A7.0	4/5A7.0	6/A7.0	1	--
365BB	1	3-0	7-0	--	WD	A	--	--	HM	B	4/A7.0	4/5A7.0	6/A7.0	1	--
365BC	1	3-0	7-0	--	WD	A	--	--	HM	B	4/A7.0	4/5A7.0	6/A7.0	1	--
365BD	1	3-0	7-0	--	WD	A	--	--	HM	B	4/A7.0	4/5A7.0	6/A7.0	3	--
365BE	1	3-0	7-0	--	WD	A	--	--	HM	B	4/A7.0	4/5A7.0	6/A7.0	1	--
365BF	1	3-0	7-0	--	WD	A	--	--	HM	B	4/A7.0	4/5A7.0	6/A7.0	1	--
365BG	1	3-0	7-0	--	WD	A	--	--	HM	B	4/A7.0	4/5A7.0	6/A7.0	1	--
365BH	1	3-0	7-0	--	WD	A	--	--	HM	B	4/A7.0	4/5A7.0	6/A7.0	1	--
365BI	1	3-0	7-0	--	WD	A	--	--	HM	B	4/A7.0	4/5A7.0	6/A7.0	1	--

GENERAL NOTES:
1. PAINT HM FRAMES/DOORS TO MATCH OWNER'S SAMPLE
2. ALL ALUM. DOORS, FRAMES AND WINDOW FRAMES TO BE ALUMINUM FINISH TO MATCH EXISTING
3. WOOD DOORS TO MATCH OWNER'S SAMPLE
4. REFER TO SHEET A7.0 FOR HOLLOW METAL AND ALUMINUM FRAME ELEVATIONS.

REMARKS:
1. PAINT ALL HM FRAMES IN PROJECT AREA
2. CLOTHES/ROBE HOOK ON BACK OF OFFICE DOORS.

LEGEND:
AL ALUMINUM
HM HOLLOW METAL
WD WOOD
UC UNDERCUT

3 NOT USED



Architecture
Planning

DorschnerAssociates, Inc.
122 W Washington Ave, Suite 100
Madison, Wisconsin 53703

ISSUED

ISSUED FOR BID 04.27.21

Dane County Dept. of Public Works
Highway and Transportation
Bid No. 320028

PROJECT
CHILD SUPPORT AGENCY
REMODEL - SUITE 365
CITY-COUNTY BUILDING
210 MARTIN LUTHER KING,
JR. BLVD., MADISON, WI

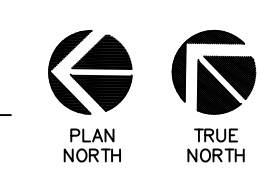
DRAWING
PARTIAL THIRD FLOOR
FINISH PLAN

DATE
08.20.20

A9.1



1 PARTIAL THIRD FLOOR FINISH PLAN
1/8"=1'-0"



GENERAL FINISH NOTES:	
1.	PAINTE ALL EXISTING HM FRAMES IN THE AREA OF WORK, BOTH SIDES.
2.	EXISTING PAINTED CABINET UNIT HEATERS TO REMAIN
3.	PAINTE ALL GNB SOFFITS IN THE AREA OF WORK PT-1
4.	NEW RUBBER BASE SCHEDULED IN EACH ROOM. SALVAGE AND REINSTALLATION OF EXISTING RUBBER BASE IS ACCEPTABLE WHEN FEASIBLE, FINAL APPROVAL BY ARCHITECT.

FIRE PROTECTION SYMBOLS, ABBREVIATIONS, SCHEDULES & SHEET INDEX

NOTE: NOT ALL SYMBOLS AND ABBREVIATIONS INDICATED HERE ARE USED IN THE DRAWINGS AND MAY NOT APPLY TO THIS PROJECT. ADDITIONAL SYMBOLS MAY BE INDICATED IN THE DRAWINGS.

FIRE PROTECTION ABBREVIATIONS			
AC	AIR COMPRESSOR	L	LAVATORY
AP	ACCESS PANEL	LBS	POUNDS
AD	AREA DRAIN	LB/HR	POUNDS PER HOUR
AE	ANAEROBIC PIPING OR ANESTHESIA EVACUATION	LF	LINEAR FOOT
AFF	ABOVE FINISHED FLOOR	LPA	LINE PRESSURE ALARM
AFG	ABOVE FINISHED GRADE	LPG	LIQUID PROPANE GAS
AHJ	AUTHORITY HAVING JURISDICTION	LP	LIQUID PROPANE
ARCH	ARCHITECTURAL	LPT	LOW POINT
ASSY	ASSEMBLY	LSK	LAB SINK
ATM	ATMOSPHERE	LT	LAUNDRY TUB
AUT	AUTOMATIC	LW	LAUNDRY WASTE OR LAB WASTE
AUX	AUXILIARY		
AVG	AVERAGE		
BIS	BELOW SLAB	M	METER
BFP	BACKFLOW PREVENTER	MAU	MAKEUP AIR UNIT
BHP	BRAKE HORSEPOWER	MAX	MAXIMUM
BLDG	BUILDING	MB	MOP BASIN
BOB	BOTTOM OF BEAM	MBTU	1,000 BRITISH THERMAL UNITS
BOP	BOTTOM OF PIPE	MBH	THOUSANDS OF BTU PER HOUR
BOT	BOTTOM	MC	MECHANICAL CONTRACTOR
BPW	BED PAN WASHER	MD	MAIN DRAIN
BRG	BATHROOM GROUP	MECH	MECHANICAL
BSMT	BASEMENT	MEP	MECHANICAL, ELECTRICAL, AND PIPING
BT	BATH TUB	MEQ	MECHANICAL EQUIPMENT ROOM
BTU	BRITISH THERMAL UNITS	MEZ	MEZZANINE
BTUH	BRITISH THERMAL UNITS PER HOUR	MFR	MANUFACTURER
BV	BALL VALVE	MH	MANHOLE
BWW	BACKWATER VALVE	MIN	MINIMUM OR MINUTES
CA	COMPRESSED AIR	MISC	MISCELLANEOUS
CALC	CALCULATE	MILL	MILLIMETER
CAP	CEILING ACCESS PANEL	MTG	MOUNTING
CFG	CUBIC FEET PER HOUR		
CFM	CUBIC FEET PER MINUTE	NA	NOT APPLICABLE
CFS	CUBIC FEET PER SECOND	N&C	NIPPLE AND CAP
CG	COMPOUND GAUGE	N.C.	NORMALLY CLOSED
CI	CAST IRON	NC	NOT IN CONTRACT
CLG	CEILING	NO	NUMBER
CLK	CLINICAL SINK	N.O.	NORMALLY OPEN
cm	CENTIMETER	NP	NON-POTABLE COLD WATER
CO	CLEANOUT	NPHW	NON-POTABLE HOT WATER
COL	COLUMN	HPHW	NON-POTABLE HOT WATER RETURN
COMP	COMPRESSOR	NPS	NOMINAL PIPE SIZE
CONC	CONCRETE	NPW	NON-POTABLE WATER
COND	CONDUCTOR	NTS	NOT TO SCALE
CONN	CONNECTION		
CONTR	CONTRACTOR	OBV	OIL BASIN VENT
CTE	CONNECT TO EXISTING	OC	CENTER
CTR	CENTER	OD	OUTSIDE DIAMETER
CJ	COPPER	OFOI	OWNER FURNISHED, OWNER INSTALLED
CV	CHECK VALVE	OH	OPEN HUB DRAIN
CW	COLD WATER	OS&Y	OUTSIDE SCREW AND YOKE
CWFU	COLD WATER FIXTURE UNITS	OSD	OPEN SITE DRAIN
CWV	CLEARWATER VENT		
CWW	CLEARWATER WASTE		
DCV	DOUBLE CHECK VALVE	PBV	PRESSURE BALANCING VALVE
DCW	DOMESTIC COLD WATER	PC	PLUMBING CONTRACTOR
DCWWR	DOMESTIC COLD WATER EXPRESS RISER	PCU	PATIENT CARE UNIT
DET	DETAIL	PCF	POUNDS PER CUBIC FOOT
DI	DEIONIZED WATER	PD	PRESSURE DROP
DIA	DIAMETER	PG	PRESSURE GAUGE
DM	DIMENSION	PH	PHASE
DN	DOWN	PHES	PITCHES UP OR DOWN
DR	DRAIN	PIV	POST INDICATOR VALVE
DS	DOWNSPOUT OR RAIN LEADER DESIGNATION	PKG	PACKAGE
DSDB	DIALYSIS SUPPLY AND DRAIN BOX	PLBG	PLUMBING
DT	DRAIN TILE	POC	POINT OF CONNECTION
DTW	DOMESTIC TEMPERED WATER	PP	POLYPROPYLENE
DV	DRAIN VALVE	PPH	POUNDS PER HOUR
DW	DISHWASHER	PPM	PARTS PER MILLION
DWG	DRAWING	PRESS	PRESSURE
E	EXISTING	PRV	PRESSURE RELIEF VALVE
EC	ELECTRICAL CONTRACTOR	PSF	POUNDS PER SQUARE FOOT
EFF	EFFICIENCY	PSI	POUNDS PER SQUARE INCH
EJ	EXPANSION JOINT	PSIA	POUNDS PER INCH ABSOLUTE
ELEC	ELECTRICAL	PSIG	POUNDS PER SQUARE INCH GAUGE
ELEV	ELEVATION	PVC	POLYVINYL CHLORIDE
EOD	EMERGENCY OVERFLOW DRAIN PIPING	QTY	QUANTITY
EORD	EMERGENCY OVERFLOW ROOF DRAIN		
EQUIP	EQUIPMENT	RD	ROOF DRAIN
ES	EMERGENCY SHOWER	REC	RECESSED
ET	EXPANSION TANK	RF	ROUGH-IN
ETR	EXISTING TO REMAIN	RI	ROUGH-IN
EVA	EVAUATION PIPING	RN	RISER NIPPLE
EXP	EXPANSION	RO	REVERSE OSMOSIS
EXST	EXISTING	ROR	REVERSE OSMOSIS RETURN
F	FAHRENHEIT	ROS	REVERSE OSMOSIS SUPPLY
FA	FIRE ALARM	ROB	ROD OUT BASIN
FACP	FIRE ALARM CONTROL PANEL	RP	RECIRCULATING PUMP
FBO	FURNISHED BY OTHERS	RPM	REVOLUTIONS PER MINUTE
FDC	FIRE DEPARTMENT CONNECTION	RPZ	REDUCED PRESSURE ZONE VALVE
FFE	FINISHED FLOOR ELEVATION	RTU	ROOF TOP UNIT
FIXT	FIXTURE	RW	RECLAIMED WATER
FH	FUME HOOD		
FLR	FLOOR	SCH	SCHEDULE
FP	FIRE PROOF	SF	SQUARE FOOT
FPM	FEET PER MINUTE	SF	SQUARE FOOT
FPS	FEET PER SECOND	SH	SHOWER
FT	FEET	SH	SHOWER
FTG	FOOTING	SK	SINK
G	GAS	SOG	SLAB ON GRADE
GA	GAGE	SP	STANDPIPE
GAL	GALLON	SPEC	SPECIFICATION
GALV	GALVANIZED	SQ	SQUARE
GC	GENERAL CONTRACTOR	SS	STAINLESS STEEL
GPH	GALLONS PER HOUR	STD	STANDARD
GPM	GALLONS PER MINUTE	STM	STORM SEWER
GTV	GATE VALVE	T&P	TEMPERATURE AND PRESSURE
HB	HOSE BIBB	TB	THRUST BLOCK
HD	HUB DRAIN	TBR	TO BE REMOVED
HP	HORSEPOWER OR HIGH POINT	TDFU	TOTAL DRAIN FIXTURE UNITS
HR	HOUR	TEMP	TEMPERATURE
HS	HOSE STATION	TH	THERMOMETER
HW	HOT WATER	TOB	TRIPLE OIL BASIN
HWFU	HOT WATER FIXTURE UNIT	TOF	TOP OF FOOTING
HWR	HOT WATER RETURN	TOG	TOP OF GRATE
HYD	HYDRAULIC	TOP	TOP OF PIPE
Hz	HERTZ	TOS	TOP OF SLAB
IC	INSULATING COUPLING	TYP	TYPICAL
ID	INSIDE DIAMETER	UG	UNDERGROUND
IE	INVERT ELEVATION	UNO	UNLESS OTHERWISE NOTED
IN	INCHES	VEL	VELOCITY
INSUL	INSULATION	VERT	VERTICAL
		VIF	VERIFY IN FIELD

FIRE PROTECTION PIPING FITTINGS, VALVES, AND SPECIALTIES			
	ANGLE VALVE (AV)		HORN
	ABORT SWITCH (DEADMAN TYPE)		IONIZATION DETECTOR (SMOKE)
	BACKFLOW PREVENTER (BFP or RPZ)		HORN W/ STROBE LIGHT
	BALANCING VALVE (BV)		MANUAL PULL STATION
	BALL VALVE		OS&Y VALVE
	BEAM PENETRATION		PHOTOELECTRIC DETECTOR
	BUTTERFLY VALVE (BFV)		PIPE ANCHOR (PA)
	CAP ON END OF PIPE		PLUG VALVE (PV)
	CEILING CLEAN AGENT NOZZLE		POST INDICATOR VALVE
	CHECK VALVE (CV)		POWER SUPPLY
	CLEAN AGENT STORAGE TANK		PREACTION VALVE
	CONTROL PANEL		PRESSURE GAUGE WITH VALVE (PG)
	CONTROL VALVE		PRESSURE SWITCH (PS)
	DELUGE VALVE		PRESSURE-REDUCING VALVE (PRV)
	DRY PIPE VALVE		PUMP (SCHEMATIC)
	FIRE DEPARTMENT CONNECTION		RATE OF RISE DETECTOR
	FIRE DEPARTMENT HOSE VALVE		REMOTE DISPLAY
	FIRE DEPARTMENT VALVE		RISER DOWN (ELBOW)
	FIRE HOSE CABINET		RISER UP (ELBOW)
	FIRE STATUS ANNUNCIATOR		ROTATING BEACON
	FLOW SWITCH		SOLENOID VALVE (SV)
	FLUSH FIRE PUMP TEST HEADER		SUB-FLOOR CLEAN AGENT NOZZLE
	FREE-STANDING FIRE DEPARTMENT CONNECTION (FIRE HYDRANT)		TAMPER SWITCH
	FREE-STANDING FIRE PUMP TEST HEADER		THERMOSTATIC MIXING VALVE
	GAS VALVE (GV)		UNION (SCREWED)
	GATE VALVE (GV)		VALVE
	GLOBE VALVE (GLV)		VALVE IN RISER
	HEAT DETECTOR		WARNING LIGHT
SPRINKLER HEAD TYPES			
	CONCEALED SPRINKLER HEAD		SEMI RECESSED SPRINKLER HEAD
	PENDENT ON/OFF SPRINKLER HEAD		SIDEWALL SPRINKLER HEAD
	PENDENT SPRINKLER HEAD		UPRIGHT SPRINKLER HEAD
	SECURITY PENDENT SPRINKLER HEAD		CONCEALED SIDEWALL SPRINKLER HEAD

GENERAL SYMBOLS	
	REVISION CLOUD WITH TAG
	VIEW CALLOUT
	SECTION VIEW
	VIEW REFERENCE
	ELEVATION MARKER
	POINT OF CONNECTION (POC)
	POINT OF DISCONNECTION
	NEW PLAN KEYED NOTE
	DEMOLITION PLAN KEYED NOTE
	PIPE TAG
	PIPING, EQUIPMENT, DEVICES, ETC. TO BE DEMOLISHED
	EXISTING PIPING, OR EQUIPMENT TO REMAIN
	NEW PIPING OR EQUIPMENT
	FLOW DIRECTION ARROW

FIRE PROTECTION SYSTEM LABELS	
	FIRE MAIN
	STANDPIPE
	COMBINATION SPRINKLER STANDPIPE
	SPRINKLER
	DRAIN PIPE

FIRE PROTECTION GENERAL NOTES	
A. SPRINKLER CONTRACTOR IS RESPONSIBLE FOR THE EXECUTION OF THIS WORK AND SHALL BECOME THOROUGHLY FAMILIAR WITH THE PROJECT SPECIFICATIONS BEFORE COMMENCING ANY WORK. THE PROJECT SPECIFICATIONS AND DRAWINGS FORM THE BASIS OF THE CONTRACT REQUIREMENTS AND INCLUDE THE TYPE AND GRADE OF MATERIALS TO BE INSTALLED, EQUIPMENT TO BE FURNISHED, THE MANNER BY WHICH TO BE INSTALLED AND WHERE TO BE LOCATED.	
B. SPRINKLER CONTRACTOR SHALL COORDINATE LOCATION OF ALL SPRINKLER HEADS AND PIPING WITH STRUCTURAL ELEMENTS, MECHANICAL, PLUMBING, ELECTRICAL EQUIPMENT AND CEILING CONFIGURATION INDICATED ON DRAWINGS. WHERE NECESSARY SPRINKLER CONTRACTOR SHALL PROVIDE ADDITIONAL SPRINKLERS TO ASSURE REQUIRED DISCHARGE PATTERNS AROUND OBSTRUCTIONS AND DIFFERENT CEILING ELEVATIONS TO YIELD A PROPER DENSITY FOR THE DESIGNED HAZARD.	
C. SPRINKLER LOCATIONS SHOWN ON THESE PLANS ARE SUGGESTED LOCATIONS FOR COORDINATION PURPOSES AND DO NOT RELIEVE THE SPRINKLER CONTRACTOR FROM PROVIDING NECESSARY SPRINKLER QUANTITIES AND LOCATIONS FOR A FULLY SPRINKLED BUILDING. LOCATIONS INDICATED SHALL BE FOLLOWED, AND SPRINKLER CONTRACTOR SHALL PROVIDE ADDITIONAL SPRINKLER LOCATIONS, QUANTITIES AND SPACING AS REQUIRED TO PROVIDE A FULLY SPRINKLED BUILDING ACCORDING TO REQUIREMENTS OF NFPA 13, MADISON FIRE MARSHAL AND OTHER APPLICABLE CODES.	
D. ALL PIPING, FITTINGS AND JOINTS IN SPRINKLER AND STANDPIPE SYSTEMS SHALL CONFORM TO NFPA 13, NON-METALLIC PIPE AND FITTINGS ARE UNACCEPTABLE.	
E. VALVES WILL BE READILY ACCESSIBLE FROM A SAFE HEIGHT AND ARE TO BE CLEAR OF ALL OBSTRUCTIONS AND THEIR OPERATION SHALL NOT BE ENCUMBERED BY ANY DEVICE OR EQUIPMENT.	
F. INSTALL ALL OVERHEAD HANGERS AND SUPPORTS PRIOR TO SPRAY FIREPROOFING OR DRYWALL CEILING.	
G. SPRINKLER SYSTEM ZONES ARE SHOWN ON DRAWINGS FOR COORDINATION PURPOSES. SPRINKLER CONTRACTOR SHALL FOLLOW ZONING AS CLOSELY AS POSSIBLE, AND SHALL REQUEST IN WRITING ANY VARIATION FROM INDICATED ZONING.	
H. THE SPACE ABOVE THE CEILING IS LIMITED AND THE INSTALLATION OF WORK WILL BE TIGHT. DUE TO THIS, IT IS IMPORTANT THAT THE SPRINKLER CONTRACTOR SHALL COORDINATE THE INSTALLATION OF THEIR WORK WITH THE CEILING SYSTEM HEIGHT AND CONSTRUCTION OF THE STRUCTURAL SYSTEM, THE LIGHTING FIXTURES, THE SPRINKLER HEADS/MAINS AND THE PLUMBING PIPES. ROUTE PIPING AS HIGH AS POSSIBLE. MAINTAIN PROPER SERVICE ACCESS CLEARANCES. ACCURATE SHOP DRAWINGS SHALL BE SUBMITTED FOR APPROVAL PRIOR TO FIELD INSTALLATION.	
I. THESE DRAWINGS ARE DIAGRAMMATIC IN NATURE AND MAY NOT SHOW EXACT ROUTING OR ALL REQUIRED OFFSETS, ACCESSORIES OR APPURTENANCES. CONTRACTOR SHALL PROVIDE AS REQUIRED TO INSTALL A COMPLETE AND COORDINATED JOB, INCLUDING ANY ADDITIONAL ITEMS REQUIRED TO MEET ACTUAL FIELD CONDITIONS AND EQUIPMENT SELECTED.	
J. SPRINKLER PROTECTION FOR ELECTRICAL ROOMS, TELE/COM ROOMS AND ANY ASSOCIATED ROOM PRIMARILY WITH ELECTRICAL EQUIPMENT SHALL BE PROTECTED WITH SIDEWALL SPRINKLER HEADS. SPRINKLER PIPING SHALL NOT BE ROUTED OVERHEAD THROUGH ANY OF THESE ROOMS, STUB INTO ROOMS FOR SIDEWALL HEADS.	
K. PROVIDE UPRIGHT SPRINKLER HEADS WITH HEAD GUARDS UNDER ALL EXPOSED DUCTWORK GREATER THAN 48" IN WIDTH.	
L. WHERE ACOUSTICAL CEILING TILES ARE PROVIDED, ALL SPRINKLERS SHALL BE INSTALLED IN CENTER OF CEILING TILES +/- 1/2 INCH.	
M. SPRINKLER CONTRACTOR SHALL HYDROSTATICALLY TEST ALL SPRINKLER AND STANDPIPE PIPING IN ACCORDANCE WITH NFPA 13 REQUIREMENTS. NEW SPRINKLER PIPING SHALL BE TESTED.	
N. SPRINKLER CONTRACTOR SHALL PERFORM ANY FIRESTOPPING ASSOCIATED WITH HIS WORK. FIRESTOPPING REQUIREMENTS AND SPECIFICATIONS ARE INDICATED IN SPECIFICATION DIVISION 7.	

DESIGN CRITERIA	
APPLICABLE CODES	<ol style="list-style-type: none"> 1. 2015 INTERNATIONAL BUILDING CODE WITH LOCAL AMENDMENTS 2. 2009 INTERNATIONAL FIRE CODE WITH LOCAL AMENDMENTS 3. NFPA 1, 2015 EDITION 4. NFPA 13, 2013 EDITION 5. NFPA 14, 2013 EDITION 6. NFPA 24, 2013 EDITION 7. NFPA 72, 2013 EDITION 8. NFPA 101, 2015 EDITION WITH LOCAL AMENDMENTS

FIRE PROTECTION SHEET INDEX	
F0.1	FIRE PROTECTION SYMBOLS & ABBREVIATIONS
F1.1	PARTIAL FIRE PROTECTION DEMOLITION FLOOR PLAN
F1.2	PARTIAL FIRE PROTECTION FLOOR PLAN

Architecture
Planning

DorschnerAssociates, Inc.
122 W Washington Ave, Suite 100
Madison, Wisconsin 53703

GRÄEF

275 West Wisconsin Avenue, Suite 300
Milwaukee, WI 53203
414 / 259 1500
414 / 259 0037 fax

ISSUED

ISSUED FOR BID 04.27.21

Dane County Dept. of Public Works
Highway and Transportation
Bid No. 320029

PROJECT
CHILD SUPPORT AGENCY
REMODEL - SUITE 365
CITY-COUNTY BUILDING
210 MARTIN LUTHER KING, JR.
BLVD., MADISON, WI

DRAWING
FIRE PROTECTION
SYMBOLS &
ABBREVIATIONS

DATE
08.20.20

F0.1

4/28/2021 10:53:39 AM

Architecture
Planning

DorschnerAssociates, Inc.
122 W Washington Ave, Suite 100
Madison, Wisconsin 53703



275 West Wisconsin Avenue, Suite 300
Milwaukee, WI 53203
414 / 259 1500
414 / 259 0037 fax

ISSUED

ISSUED FOR BID 04.27.21

Dane County Dept. of Public Works
Highway and Transportation
Bid No. 320029

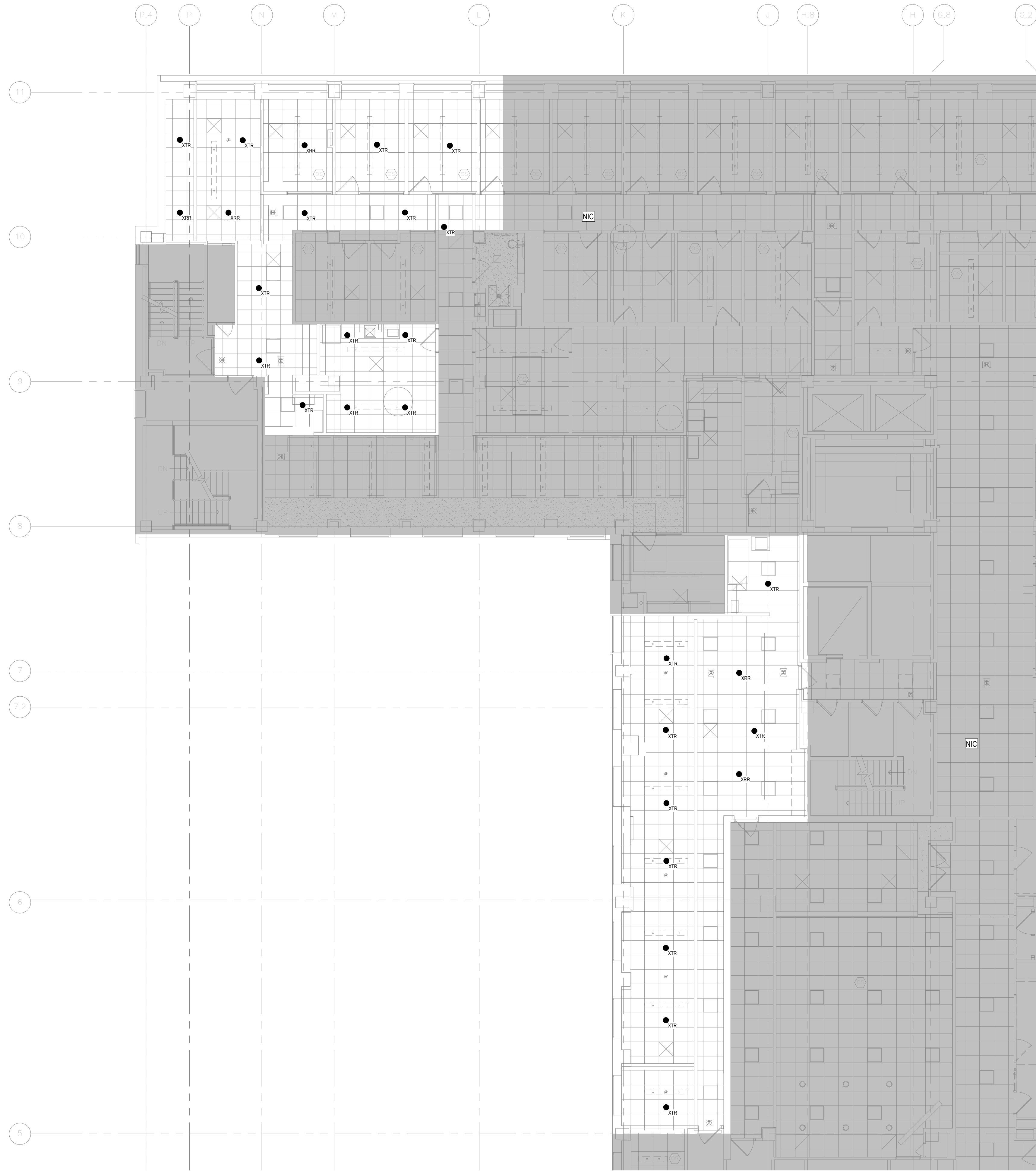
PROJECT
CHILD SUPPORT AGENCY
REMODEL - SUITE 365
CITY-COUNTY BUILDING
210 MARTIN LUTHER KING, JR.
BLVD., MADISON, WI

DRAWING
PARTIAL FIRE
PROTECTION
DEMOLITION FLOOR
PLAN
DATE
08.20.20

EXISTING PROJECT CONDITIONS
INFORMATION PERTAINING TO EXISTING PROJECT CONDITIONS, SUCH AS LOCATIONS OF ARCHITECTURAL AND STRUCTURAL BUILDING COMPONENTS, MECHANICAL AND ELECTRICAL EQUIPMENT, PIPING, DUCTWORK, ROUGH-INS AND OTHER MISCELLANEOUS CONSTRUCTION, APPEARS ON PROJECT DRAWINGS. THIS INFORMATION IS BASED ON AVAILABLE RECORDS AS WELL AS INFORMATION COLLECTED WITH REASONABLE CARE AT THE PROJECT SITE. CONTRACTORS SHALL BE SOLELY RESPONSIBLE FOR VERIFYING DIMENSIONS AND RELATED INFORMATION AT THE PROJECT SITE PRIOR TO PROCURING ANY MATERIALS, PRODUCTS OR EQUIPMENT TO PERFORM THEIR WORK.

FIRE PROTECTION ANNOTATIONS	
XTR	EXISTING TO REMAIN
XRR	EXISTING TO BE REMOVED AND REPLACED
XR	EXISTING THAT HAS BEEN RELOCATED
N	NEW TO MATCH EXISTING

GENERAL NOTES:
1. WHERE ACOUSTICAL CEILING TILES ARE PROVIDED, ALL SPRINKLERS SHALL BE INSTALLED IN CENTER OF CEILING TILES +/- 1/2 INCH.



1 FIRE PROTECTION DEMOLITION FLOOR PLAN
1/8" = 1'-0"



4/26/2021 10:53:40 AM

Architecture
Planning

DorschnerAssociates, Inc.
122 W Washington Ave, Suite 100
Madison, Wisconsin 53703



275 West Wisconsin Avenue, Suite 300
Milwaukee, WI 53203
414 / 259 1500
414 / 259 0037 fax

ISSUED

ISSUED FOR BID 04.27.21

Dane County Dept. of Public Works
Highway and Transportation
Bid No. 320029

PROJECT
CHILD SUPPORT AGENCY
REMODEL - SUITE 365
CITY-COUNTY BUILDING
210 MARTIN LUTHER KING, JR.
BLVD., MADISON, WI

DRAWING
PARTIAL FIRE
PROTECTION FLOOR
PLAN

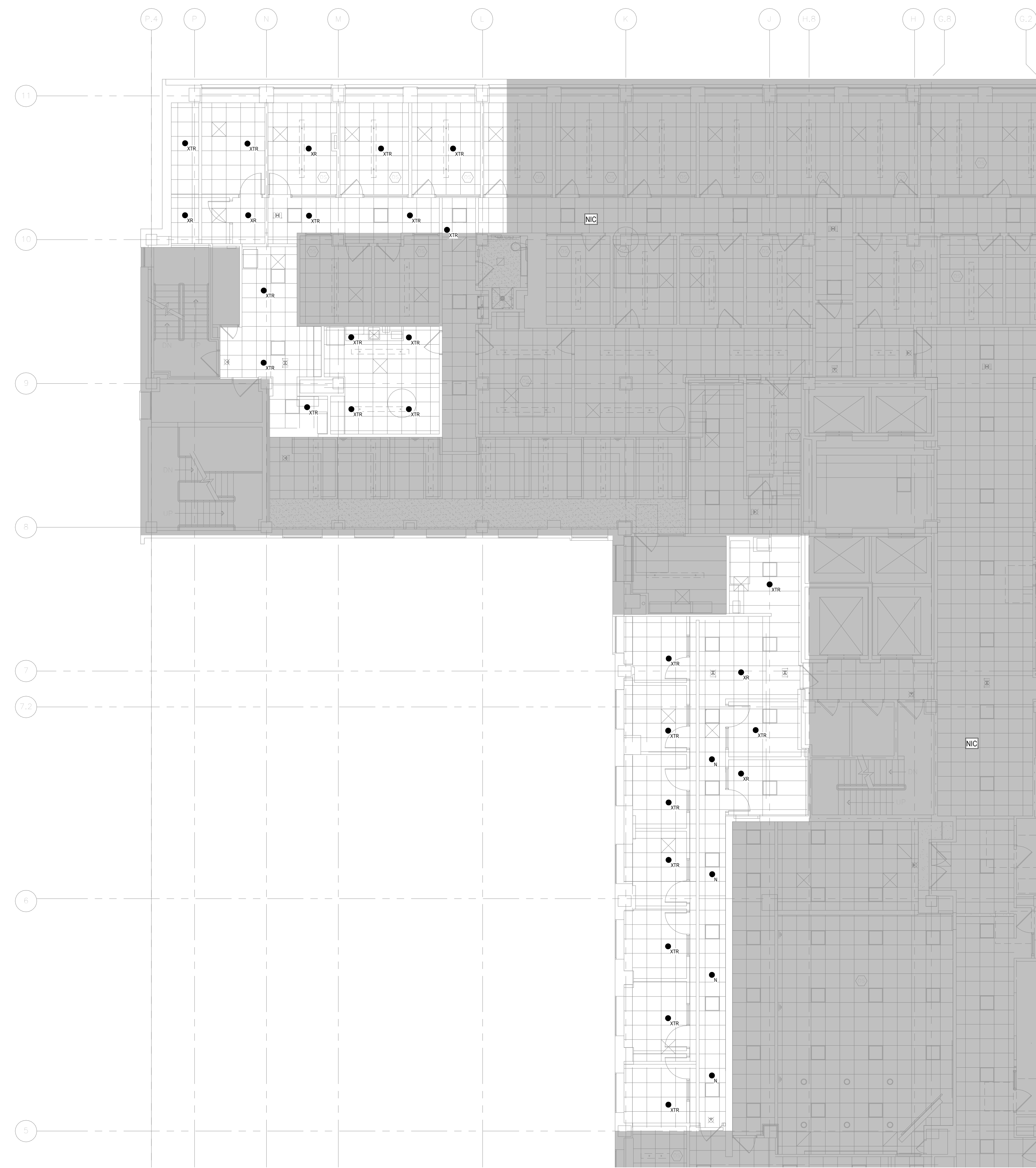
DATE
08.20.20

F1.2

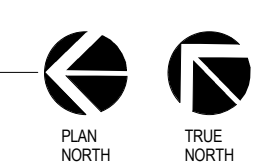
EXISTING PROJECT CONDITIONS
INFORMATION PERTAINING TO EXISTING PROJECT CONDITIONS, SUCH AS LOCATIONS OF ARCHITECTURAL AND STRUCTURAL BUILDING COMPONENTS, MECHANICAL AND ELECTRICAL EQUIPMENT, PIPING, DUCTWORK, ROUGH-INS AND OTHER MISCELLANEOUS CONSTRUCTION, APPEARS ON PROJECT DRAWINGS. THIS INFORMATION IS BASED ON AVAILABLE RECORDS AS WELL AS INFORMATION COLLECTED WITH REASONABLE CARE AT THE PROJECT SITE. CONTRACTORS SHALL BE SOLELY RESPONSIBLE FOR VERIFYING DIMENSIONS AND RELATED INFORMATION AT THE PROJECT SITE PRIOR TO PROCURING ANY MATERIALS, PRODUCTS OR EQUIPMENT TO PERFORM THEIR WORK.

FIRE PROTECTION ANNOTATIONS	
XTR	EXISTING TO REMAIN
XRR	EXISTING TO BE REMOVED AND REPLACED
XR	EXISTING THAT HAS BEEN RELOCATED
N	NEW TO MATCH EXISTING

GENERAL NOTES:
1. WHERE ACOUSTICAL CEILING TILES ARE PROVIDED, ALL SPRINKLERS SHALL BE INSTALLED IN CENTER OF CEILING TILES +/- 1/2 INCH.



A1 FIRE PROTECTION FLOOR PLAN
1/8" = 1'-0"



4/26/2021 10:53:41 AM

MECHANICAL SYMBOLS AND ABBREVIATIONS

NOTE: NOT ALL SYMBOLS AND ABBREVIATIONS INDICATED HERE ARE USED IN THE DRAWINGS AND MAY NOT APPLY TO THIS PROJECT. ADDITIONAL SYMBOLS MAY BE INDICATED IN THE DRAWINGS.

MECHANICAL ABBREVIATIONS	
AC	AIR CONDITIONING UNIT/AIR COMPRESSOR
ACC	AIR COOLED CONDENSER
ACCU	AIR COOLED CONDENSING UNIT
ACU	AIR CONDITIONING UNIT
AD	ACCESS DOOR
ADJ	ADJUSTABLE
AFF	ABOVE FINISHED FLOOR
AHU	AIR HANDLING UNIT
AL	ALUMINUM
ALT	ALTERNATE
AMD	AIR MIXING DEVICE
AP	ACCESS PANEL
APD	AIR PRESSURE DROP
APPROX	APPROXIMATE
ARCH	ARCHITECTURAL
ARU	AIR ROTATION UNIT
AS	AIR SEPARATOR
AT	AIR TERMINAL DEVICE
AVG	AVERAGE
B	BOILER
BAS	BUILDING AUTOMATION SYSTEM
BBS	BOILER BLOWDOWN SEPARATOR
BC	BOOSTER COIL
BFS	BOILER FEEDWATER SYSTEM
BOB	BOTTOM OF BEAM
BOD	BOTTOM OF DUCT
BOP	BOTTOM OF PIPE
BTU	BRITISH THERMAL UNITS
BTUH	BRITISH THERMAL UNITS PER HOUR
C	CONVECTOR
CAV	CONSTANT AIR VOLUME
CC	COOLING COIL
CFH	CUBIC FEET PER HOUR
CFM	CUBIC FEET PER MINUTE
CH	CHILLER
CL	CENTERLINE
CLG	CEILING
COND	CONDENSATE
CONTR	CONTRACTOR
COP	COEFFICIENT OF PERFORMANCE
CP	CONDENSATE PUMP
CRU	CONDENSATE RETURN UNIT
CT	COOLING TOWER
CU	COPPER
CUH	CABINET UNIT HEATER
DAP	DUCT ACCESS PANEL
DB	DRY BULB
DC	DUST COLLECTOR
DDC	DIRECT DIGITAL CONTROL
DEG	DEGREES
DH	DEHUMIDIFIER
DIA	DIAMETER
DIM	DIMENSION
DN	DOWN
DWG	DRAWING
DX	DIRECT EXPANSION
EAT	ENTERING AIR TEMPERATURE
EB	ELECTRIC BASEBOARD
EC	ELECTRICAL CONTRACTOR
EDR	EQUIVALENT DIRECT RADIATION
EF	EXHAUST FAN
EFF	EFFICIENCY
EH	EXHAUST HOOD
EJ	EXPANSION JOINT
ELEC	ELECTRICAL
ELEV	ELEVATION
EM	EMERGENCY
ESP	EXTERNAL STATIC PRESSURE
ET	EXPANSION TANK
ETR	EXISTING TO REMAIN
EUH	ELECTRIC UNIT HEATER
EWT	ENTERING WATER TEMPERATURE
EXH	EXHAUST
EXIST	EXISTING
EXP	EXPANSION
F	FAHRENHEIT
F&T	FILTER
FC	FLOAT AND THERMOSTATIC
FCU	FAN COIL UNIT
FD	FLOOR DRAIN
FLA	FULL LOAD AMPS
FLR	FLOOR
FM	FACTORY MUTUAL
FOP	FUEL OIL PUMP
FOT	FUEL OIL TANK
FPD	FLUID PRESSURE DROP
FPI	FINS PER INCH
FPM	FEET PER MINUTE
FPS	FEET PER SECOND
FT	FEET
FTG	FOOTING
FTR	FIN TUBE RADIATION
G	GALVE
GAL	GALLON
GALV	GALVANIZED
GBD	GRAVITY BACKDRAFT DAMPER
GC	GENERAL CONTRACTOR
GF	GAS FURNACE
GPH	GALLONS PER HOUR
GPM	GALLONS PER MINUTE
GV	GRAVITY VENTILATOR
H	HUMIDIFIER
HC	HEATING COIL
HP	HEAT PUMP
HP	HORSEPOWER
HRC	HEAT RECOVERY COIL
HRD	HEAT RECLAIM DEVICE
HX	HEAT EXCHANGER
IAH	INTAKE AIR HOOD
ID	INSIDE DIAMETER
IE	INVERT ELEVATION
IF	INLINE FAN
IFH	INFRARED HEATER
IN	INCHES
LAT	LEAVING AIR TEMPERATURE
LBHR	POUNDS PER HOUR
LF	LINEAR FEET
LP	LOUVERED PENTHOUSE
LTG	LIGHTING
LWT	LEAVING WATER TEMPERATURE
MAU	MAKE-UP AIR UNIT
MAX	MAXIMUM
MBH	THOUSANDS OF BTU PER HOUR
MC	MECHANICAL CONTRACTOR
MCA	MINIMUM CIRCUIT AMPACITY
MCC	MOTOR CONTROL CENTER
MCC	MOTOR CONTROL CENTER
MEP	MECHANICAL ELECTRICAL AND PLUMBING
MER	MECHANICAL EQUIPMENT ROOM
MEZZ	MEZZANINE
MFR	MANUFACTURER
MIN	MINIMUM
MISC	MISCELLANEOUS
MOD	MOTOR OPERATED DAMPER
NA	NOT APPLICABLE
NC	NORMALLY CLOSED
NIC	NOT IN CONTRACT
NO	NORMALLY OPEN
NPS	NOMINAL PIPE SIZE
NPSH	NET POSITIVE SUCTION HEAD
NPT	NATIONAL PIPE THREAD
NR	NEAR
NTS	NOT TO SCALE
OC	ON CENTER
OED	OPEN END DUCT
OLP	OVERLOAD PROTECTION
OV	OUTLET VELOCITY
P	PUMP
PC	PLUMBING CONTRACTOR
PCF	POUNDS PER CUBIC FOOT
PD	PRESSURE DROP
PH	PHASE
PLBG	PLUMBING
POC	POINT OF CONNECTION
PPH	POUNDS PER HOUR
PRV	PRESSURE RELIEF VALVE
PSF	POUNDS PER SQUARE FOOT
PSI	POUNDS PER SQUARE INCH
PSIA	POUNDS PER SQUARE INCH ABSOLUTE
PSIG	POUNDS PER SQUARE INCH GAUGE
PVC	POLYVINYL CHLORIDE
RAHU	ROOFTOP AIR HANDLING UNIT
RCP	RADIANT CEILING PANEL
REF	ROOF EXHAUST FAN
REQD	REQUIRED
RF	ROOF
RF	RELIEF FAN
RH	RELIEF HOOD
RH	RELATIVE HUMIDITY
RPM	REVOLUTIONS PER MINUTE
RTU	ROOFTOP UNIT
RV	ROOF VENTILATOR
S/S	STAINLESS STEEL
SA	SOUND ATTENUATOR
SCH	SCHEDULE
SF	SUPPLY FAN
SHT	SHEET
SMD	SMOKE MOTORIZED DAMPER
SP	STATIC PRESSURE
SPEC	SPECIFICATION
SQ	SQUARE
STD	STANDARD
STRUCT	STRUCTURAL
T	TANK
T STAT	THERMOSTAT
T&P	TEMPERATURE AND PRESSURE TO BE REMOVED
TBR	TEMPERATURE CONTROL
TC	TEMPERATURE
TEMP	TEMPERATURE
TOS	TOP OF BEAM
TOD	TOP OF DUCT
TOP	TOP OF PIPE
TOS	TOP OF SLAB
TSP	TOTAL STATIC PRESSURE
TXV	THERMAL EXPANSION VALVE
TYP	TYPICAL
UC	UNDERCUT DOOR
UH	UNIT HEATER
UNO	UNLESS OTHERWISE NOTED
UST	UNDERGROUND STORAGE TANK
UV	UNIT VENTILATOR
V	VOLTS
V	VALVE
VAV	VARIABLE AIR VOLUME
VEL	VELOCITY
VF	VENTILATION FAN
VFD	VARIABLE FREQUENCY DRIVE
VP	VELOCITY PRESSURE
VP	VACUUM PUMP
VTR	VENT THRU ROOF
W	WITH
W/O	WITHOUT
WC	WET BULB
WC	WATER COLUMN
WG	WATER GAUGE
X	EXISTING

MECHANICAL SYSTEM ABBREVIATIONS	
<u>PIPING SYSTEMS</u>	
CA	COMPRESSED AIR
CWS	CONDENSER WATER SUPPLY
CWR	CONDENSER WATER RETURN
CHWS	CHILLED WATER SUPPLY
CHWR	CHILLED WATER RETURN
D	DRAIN LINE
PW	POTABLE WATER
FOF	FUEL OIL FILL
FOS	FUEL OIL SUPPLY
FOR	FUEL OIL RETURN
FOV	FUEL OIL VENT
HPS	HEAT PUMP WATER SUPPLY
HPR	HEAT PUMP WATER RETURN
HWS	HOT WATER SUPPLY
HWR	HOT WATER RETURN
HPS	HIGH PRESSURE STEAM
HPC	HIGH PRESSURE STEAM CONDENSATE
HS	HYDRONIC SUPPLY (DUAL TEMPERATURE SYSTEM)
HR	HYDRONIC RETURN (DUAL TEMPERATURE SYSTEM)
LPS	LOW PRESSURE STEAM
LPC	LOW PRESSURE STEAM CONDENSATE
NG	NATURAL GAS
NPW	NON-POTABLE WATER
PC	PUMPED CONDENSATE
RHG	REFRIGERANT HOT GAS
RL	REFRIGERANT LIQUID
RS	REFRIGERANT SUCTION
V	VENT LINE
(X) ABBV	EXISTING SYSTEM
<u>DUCT SYSTEMS</u>	
EA	EXHAUST AIR
OA	OUTSIDE AIR
RA	RETURN AIR
SA	SUPPLY AIR
TA	TRANSFER AIR

GRILLE, REGISTER, AND DIFFUSER NOTATION	

MECHANICAL DUCTWORK SPECIALTIES	

GENERAL SYMBOLS	
	REVISION CLOUD WITH TAG
	VIEW CALLOUT
	SECTION VIEW
	ELEVATION MARKER
	POINT OF CONNECTION
	POINT OF DISCONNECTION
	KEYED NOTE - CIRCLE = NEW CONSTRUCTION - HEXAGON = DEMOLITION
	MECHANICAL EQUIPMENT TAG
	PIPE OR DUCT TAG
	PIPING, DUCTWORK, EQUIPMENT, DEVICES, ETC. TO BE DEMOLISHED
	EXISTING PIPING, DUCTWORK, OR EQUIPMENT TO REMAIN
	NEW PIPING, DUCTWORK, OR EQUIPMENT
	BREAK LINE
	AIRFLOW DIRECTION ARROW
	FLOW DIRECTION ARROW

DUCTWORK FITTINGS & SYMBOLS	
	RECTANGULAR / ROUND BRANCH TAKEOFF
	TEE (FOR LOW PRESSURE SUPPLY AIR DUCTWORK ONLY)
	ECCENTRIC TRANSITION
	CONCENTRIC TRANSITION
	SUPPLY AIR OR OUTSIDE AIR RISE
	SUPPLY AIR OR OUTSIDE AIR DROP
	RETURN AIR RISE
	RETURN AIR DROP
	EXHAUST AIR RISE
	EXHAUST AIR DROP
	RADIUS ELBOW
	SQUARE ELBOW
	DUCT CROSSING
	DUCT SLOPE IN DIRECTION OF RISE

MECHANICAL PIPING FITTINGS, VALVES, AND SPECIALTIES			
	BALANCING VALVE		PIPE ELBOW DOWN
	BALL VALVE		PIPE ELBOW UP
	BUTTERFLY VALVE		PIPE TEE DOWN
	BUTTERFLY VALVE WITH ACTUATOR		PIPE TEE UP
	CHECK VALVE		PIPE UNION
	DRAIN VALVE WITH CAPPED END		AUTOMATIC AIR VENT
	GATE VALVE		MANUAL AIR VENT
	GLOBE VALVE		BALL JOINT
	ISOLATION (SHUTOFF) VALVE		EXPANSION JOINT
	PIPE STRAINER		FLEX CONNECTION
	PRESSURE REDUCING VALVE		FLOW METER
	PRESSURE RELIEF VALVE		FLOW SWITCH
	PUMP		PETES PLUG
	TRIPLE DUTY VALVE		PRESSURE GAUGE
	2-WAY CONTROL VALVE		PRESSURE SWITCH
	3-WAY CONTROL VALVE		STEAM TRAP (XX) IB = INVERTED BUCKET T = THERMOSTATIC T&B = FLOAT AND THERMOSTATIC
	CAPPED PIPE		THERMOMETER
	FLOW SENSOR		TEMPERATURE SENSOR

MECHANICAL CONTROLS			
	SPACE THERMOSTAT/TEMPERATURE SENSOR WITH ASSOCIATED EQUIPMENT TAG		CARBON MONOXIDE SENSOR
	SPACE HUMIDISTAT		CARBON DIOXIDE SENSOR
	PRESSURE SENSOR		NITROGEN DIOXIDE SENSOR
	DUCT SMOKE DETECTOR		
	SPEED SWITCH		
	STARTER		

MECHANICAL SHEET INDEX	
M0.1	MECHANICAL SYMBOLS & ABBREVIATIONS
M0.2	MECHANICAL GENERAL NOTES
M1.1	PARTIAL MECHANICAL DEMOLITION FLOOR PLAN
M1.2	PARTIAL MECHANICAL FLOOR PLAN
M6.1	MECHANICAL SCHEDULES AND DETAILS

Architecture
Planning

DorschnerAssociates, Inc.
122 W Washington Ave, Suite 100
Madison, Wisconsin 53703

GRÄEF
275 West Wisconsin Avenue, Suite 300
Milwaukee, WI 53203
414 / 259 1500
414 / 259 0037 fax

ISSUED
ISSUED FOR BID 04.27.21

Dane County Dept. of Public Works
Highway and Transportation
Bid No. 320029

PROJECT
CHILD SUPPORT AGENCY
REMODEL - SUITE 365
CITY-COUNTY BUILDING
210 MARTIN LUTHER KING, JR.
BLVD., MADISON, WI

DRAWING
MECHANICAL SYMBOLS
& ABBREVIATIONS

DATE
08.20.20

M0.1

Architecture
Planning

DorschnerAssociates, Inc.
122 W Washington Ave, Suite 100
Madison, Wisconsin 53703



275 West Wisconsin Avenue, Suite 300
Milwaukee, WI 53203
414 / 259 1500
414 / 259 0037 fax

ISSUED

ISSUED FOR BID 04.27.21

Dane County Dept. of Public Works
Highway and Transportation
Bid No. 320029

PROJECT
CHILD SUPPORT AGENCY
REMODEL - SUITE 365
CITY-COUNTY BUILDING
210 MARTIN LUTHER KING, JR.
BLVD., MADISON, WI

DRAWING
MECHANICAL GENERAL
NOTES

DATE
08.20.20

M0.2

GENERAL PROJECT NOTES

1. ALL WORK SHALL COMPLY WITH THE 2015 INTERNATIONAL BUILDING CODE WITH WISCONSIN AMMENDMENTS, 2015 INTERNATIONAL MECHANICAL CODE WITH WISCONSIN AMMENDMENTS AND ALL APPLICABLE STANDARDS.
2. DIMENSIONS SHALL BE FIELD-VERIFIED AND COORDINATED PRIOR TO PROCUREMENT OR FABRICATION. COORDINATE THE WORK WITH OTHER TRADES INVOLVED. FIELD MODIFICATIONS SUCH AS OFFSETS IN PIPING OR DUCTWORK (INCLUDING DIVIDED DUCTWORK) NEEDED DUE TO OBSTRUCTIONS OR INTERFERENCES SHALL BE PROVIDED AT NO ADDITIONAL COST. FOR PROJECTS INVOLVING RENOVATION, COORDINATE NEW WORK WITH EXISTING ELEMENTS SUCH AS THE BUILDING STRUCTURE AND ARCHITECTURAL FEATURES, SPRINKLER PIPING, LIGHTS, PLUMBING, AND ELECTRICAL CONDUIT.
3. DRAWINGS ARE DIAGRAMMATIC IN NATURE. COORDINATE EXACT LOCATION OF ALL CEILING MOUNTED EQUIPMENT SO ALL SERVICEABLE COMPONENTS CAN BE EASILY ACCESSED BY REMOVING CEILING TILES ONLY. REMOVAL OR RELOCATION OF LIGHTING FIXTURES FOR SERVICE ACCESS IS NOT ACCEPTABLE. THE CONTRACTOR SHALL RE-INSTALL EQUIPMENT THAT HAS INADEQUATE OR UNSAFE ACCESSIBILITY. PROVIDE ALL TRANSITIONS, TURNING VANES, ELBOWS, FITTINGS, ETC., TO ALLOW SMOOTH FLOWS. ALL SPLIT DUCT FITTINGS SHALL TRANSITION TO FULL SIZE OF THE SUM OF BOTH BRANCHES, UPSTREAM OF SPLIT. REFER TO TYPICAL DETAILS FOR PIPING AND INSTALLATION OF EQUIPMENT.
4. PRIOR TO BID, COORDINATE ALL MECHANICAL WORK WITH ELECTRICAL WORK AND OTHER TRADES. SEE SPECIFICATIONS FOR REQUIREMENTS.
5. GENERAL CONTRACTOR IS RESPONSIBLE TO HAVE QUALIFIED SUBCONTRACTORS PERFORMING ALL WORK. CONTRACTORS AND FOREMEN PERFORMING WORK UNDER THIS DIVISION SHALL MEET THE SPECIFIED MINIMUM QUALIFICATIONS AND LICENSE REQUIREMENTS. QUALIFICATIONS SHALL BE SUBMITTED FOR REVIEW BY A/E PRIOR TO SHOP DRAWING PHASE AND PRIOR TO ANY WORK BEING PERFORMED BY CONTRACTOR. NO PAYMENTS WILL BE AUTHORIZED BY ENGINEER FOR WORK PERFORMED BY SUBCONTRACTING FIRMS OR FOREMEN THAT DO NOT MEET THE MINIMUM QUALIFICATIONS.
6. WHERE CROWDED LOCATIONS EXIST OR WHERE THERE IS A POSSIBILITY OF CONFLICT BETWEEN TRADES, CONTRACTOR SHALL PREPARE COMPOSITE DRAWINGS SHOWING THE EXACT LOCATION OF PIPES, DUCTS, CONDUIT AND EQUIPMENT. DRAWINGS SHALL BE BASED ON FIELD MEASUREMENTS AND, AFTER CONSULTATION AND AGREEMENT BETWEEN THE TRADES, SHALL BE APPROVED BY THE ARCHITECT/ENGINEER BEFORE INSTALLATION OF THE WORK.
7. MECHANICAL CONTRACTOR SHALL COORDINATE WITH ENGINEER AND GENERAL CONTRACTOR ON REQUIREMENTS FOR STRUCTURAL SUPPORT AND FRAMING FOR ALL MECHANICAL EQUIPMENT AND SYSTEMS. GENERAL CONTRACTOR SHALL BE RESPONSIBLE FOR PROVIDING AND VERIFYING STRUCTURAL SUPPORT AND FRAMING.
8. MECHANICAL CONTRACTOR SHALL BE RESPONSIBLE FOR FIELD VERIFICATION OF EXISTING CONDITIONS AND COORDINATION WITH ALL OTHER TRADES, INCLUDING BUT NOT LIMITED TO STRUCTURAL, LIGHTING, ELECTRICAL, PLUMBING, AND OTHER EXISTING AND NEW WORK. VERIFY ALL EXISTING CONDITIONS IN FIELD PRIOR TO PURCHASING EQUIPMENT. ALL DISCREPANCIES OR POTENTIAL PROBLEMS SHALL BE BROUGHT TO THE ATTENTION OF THE ENGINEER PRIOR TO BIDDING. PROVIDE ADDITIONAL MATERIALS AND LABOR TO RELOCATE OR REPLACE MECHANICAL WORK AS REQUIRED TO ALLOW SPACE FOR THE WORK OF ALL TRADES.
9. THE DRAWINGS INDICATE APPROXIMATE LOCATIONS BASED UPON INFORMATION OBTAINED WITHOUT REMOVING CEILING TILES OR WALLS. THEREFORE, THE CONTRACTOR SHALL INCLUDE IN THEIR BID CONTINGENCY COSTS TO ADDRESS CONFLICTS BETWEEN DESIGN AND EXISTING CONDITIONS.
10. THE CONTRACTOR SHALL BE RESPONSIBLE FOR ALL COSTS INCURRED BY OTHER TRADES DUE TO SUBSTITUTION OF OTHER THAN SCHEDULED EQUIPMENT. WHEN EQUIPMENT FURNISHED IS DIFFERENT THAN INDICATED, THE COST OF ADDITIONAL ELECTRICAL SERVICE, STRUCTURAL AND RELATED WORK SHALL BE PAID BY THIS CONTRACTOR.
11. ALL SERVICES TO EXISTING BUILDINGS SHALL BE MAINTAINED DURING CONSTRUCTION UNLESS OTHERWISE INDICATED. IF NECESSARY, INTERRUPTIONS TO EXISTING SERVICES SHALL BE SCHEDULED FOR TIMES OTHER THAN NORMAL OPERATING HOURS (SUCH AS NIGHTS AND WEEKENDS). SUCH INTERRUPTIONS TO SERVICES SHALL NOT BE MADE WITHOUT THE PRIOR WRITTEN CONSENT OF THE OWNER'S REPRESENTATIVE AND PROPER COORDINATION WITH OTHER TRADES. PRE-WORK SHALL BE PERFORMED TO MAKE THE SHUTDOWN PERIOD AS BRIEF AS POSSIBLE.
12. ALL CHANGES MADE IN THE FIELD SHALL BE RECORDED ON AS-BUILT DRAWINGS, SHOP DRAWINGS, AND MAINTENANCE MANUALS. NOTIFY ENGINEER OF ANY CONFLICTS PRIOR TO PURCHASING EQUIPMENT AND PRIOR TO CUTTING OPENINGS.
13. SHOP DRAWINGS SHALL BE SUBMITTED AND REVIEWED FOR ALL MECHANICAL WORK INCLUDING, BUT NOT LIMITED TO, DUCTWORK, PIPING, EQUIPMENT, AND AIR DISTRIBUTION DEVICES PRIOR TO ANY FABRICATION OR INSTALLATION. ALL SHOP DRAWINGS SHALL BE SUBMITTED IN A FORMAT THAT IS IN STRICT ACCORDANCE WITH SPECIFICATIONS.
14. LOCATE EQUIPMENT TO ACHIEVE MANUFACTURER'S RECOMMENDED ACCESS AND CLEARANCE FOR OPERATION AND MAINTENANCE. COORDINATE EQUIPMENT LOCATIONS WITH WORK OF OTHER TRADES. DO NOT INFRINGE ON THE OPERATION AND MAINTENANCE SPACES OF EQUIPMENT INSTALLED BY OTHER TRADES. WHERE CONFLICT OCCURS, COORDINATE WITH OTHER TRADES TO LOCATE OR RELOCATE EQUIPMENT TO RESOLVE CONFLICT AND MAINTAIN REQUIRED ACCESS.
15. ALL CONNECTIONS TO EQUIPMENT SHALL BE VERIFIED WITH MANUFACTURER'S CERTIFIED DRAWINGS. TRANSITIONS TO ALL EQUIPMENT SHALL BE VERIFIED AND PROVIDED FOR EQUIPMENT FURNISHED.
16. ALL EQUIPMENT, PIPING AND VALVES SHALL HAVE SPECIFIED IDENTIFICATION LABELS AND AS INDICATED.
17. DUCT OPENING TYPES THROUGH BUILDING CONSTRUCTION SHALL BE SUITED TO PRESERVE FLOOR, WALL, OR DUCT/PIPE SYSTEM RATINGS.
18. COORDINATE DUCTWORK WITH EXISTING CEILING SUPPORT CABLES.
19. DUCT CONSTRUCTION SHALL BE SHEET METAL AND IN ACCORDANCE WITH THE LATEST EDITION OF THE SMACNA HVAC DUCT CONSTRUCTION STANDARD. DUCT SIZES SHOWN ARE MINIMUM INSIDE CLEAR DIMENSIONS.
20. ALL SUPPLY AIR DUCT BENDS FROM THE VERTICAL TO THE HORIZONTAL AND ANGLED TURNS OF DUCTWORK SHALL BE RADIUS ELBOWS. WHERE A RADIUS ELBOW WILL NOT FIT, ELBOW SHALL HAVE TURNING VANES INSTALLED.
21. BEVELED TAKE-OFFS AND DAMPERS SHALL BE INSTALLED IN ALL BRANCH DUCTWORK LEADING FROM MAIN TRUNK LINES.
22. COORDINATE DIFFUSER, GRILLE AND REGISTER LOCATIONS WITH ARCHITECTURAL REFLECTED CEILING PLANS AND EQUIPMENT OF ALL TRADES. VERIFY FINISH WITH ARCHITECT PRIOR TO PURCHASING GRILLES, REGISTERS, DIFFUSERS, LOUVERS AND OTHER AIR DISTRIBUTION DEVICES.
23. PROVIDE AIR TURNING VANES IN ALL 90-DEGREE RECTANGULAR DUCT ELBOWS.
24. SEE SPECIFICATIONS FOR GAUGES, THICKNESS, BRACING, REQUIREMENTS, ETC., OF DUCTWORK.
25. LOCATE THERMOSTATS, TEMPERATURE SENSORS, HUMIDISTATS, AND HUMIDITY SENSORS AT 48" ABOVE FINISHED FLOOR UNLESS NOTED OTHERWISE. COORDINATE LOCATIONS WITH OTHER EQUIPMENT, FURNITURE, AND DOOR SWINGS.
26. ALL EQUIPMENT, DUCTWORK, ETC., SHALL BE SUPPORTED AS DETAILED AND/OR SPECIFIED. PROVIDE ADDITIONAL SUPPORTS AS REQUIRED TO PROVIDE A VIBRATION-FREE, RIGID INSTALLATION.
27. ALL BARE METAL SURFACES SHALL BE PRIMED TO PREVENT ANY RUST, INCLUDING, BUT NOT LIMITED TO, ANGLE FRAMING, UNIT SUPPORTS, MOUNTING HARDWARE, ETC. DAMPERS AND INSIDES OF DUCTS VISIBLE THROUGH GRILLES, REGISTERS AND DIFFUSERS SHALL BE PAINTED FLAT BLACK.
28. ACCESS PANELS IN DUCTWORK AND CEILINGS SHALL BE PROVIDED WHERE REQUIRED FOR OPERATION, BALANCING OR MAINTENANCE OF ALL MECHANICAL EQUIPMENT. PROVIDE ACCESS PANELS AS REQUIRED FOR ALL VALVES, DAMPERS, CONTROLS, OR OTHER EQUIPMENT.
29. PROVIDE FLEXIBLE DUCT CONNECTIONS ON ALL DUCTWORK CONNECTING TO EACH FAN, AIR HANDLING UNITS, AND FAN COIL UNITS.
30. MAINTAIN CLEARANCE OF A MINIMUM OF 6" BETWEEN DUCTWORK, PIPING, EQUIPMENT, ETC., AND ALL FIRE RATED, AND FIRE/SMOKE RATED PARTITIONS, TO ALLOW FOR INSPECTIONS OF RATED WALLS.
31. ALL MATERIALS AND EQUIPMENT INSTALLED IN RETURN AIR PLENUMS SHALL BE NON-COMBUSTIBLE AND UL APPROVED FOR USE IN A RETURN AIR PLENUM SPACE. ALL WIRING SHALL BE NON-COMBUSTIBLE OR SHALL BE ENCLOSED IN METAL CONDUIT OR PROTECTED BY A SHEET METAL COVER SECURED WITH METAL FASTENERS.
32. WATER PRESSURE DROPS THROUGH COIL CONTROL VALVES SHALL NOT EXCEED 5 PSI.
33. SLEEVE AND SEAL ALL PIPING PENETRATIONS THROUGH BUILDING PARTITIONS. PROVIDE MANUAL AIR VENTS AT ALL HIGH POINTS IN CHILLED WATER AND HOT WATER PIPING.
34. PIPING, DUCTWORK LEAK PROTECTION APPARATUS, OR OTHER EQUIPMENT FOREIGN TO ELECTRICAL SWITCHBOARDS, PANELBOARDS, DISTRIBUTION BOARDS, OR MOTOR CONTROL CENTERS SHALL NOT BE INSTALLED WITHIN THE REQUIRED SPACE FOR WORKING CLEARANCES OR DEDICATED SPACES OF THE ELECTRICAL EQUIPMENT, EXTENDING IN FRONT OF AND FROM FLOOR TO STRUCTURAL CEILING WITH A WIDTH AND DEPTH OF THE ELECTRICAL EQUIPMENT IN ACCORDANCE WITH NEC-110.26.
35. GENERAL DEMOLITION NOTE: INFORMATION TAKEN FROM AVAILABLE RECORD DRAWINGS AND VISUAL FIELD OBSERVATIONS. CONTRACTOR SHALL FIELD VERIFY ALL EXISTING CONDITIONS PRIOR TO COMMENCEMENT OF WORK.
36. ALL EQUIPMENT, DUCTWORK, ETC., TO BE REMOVED SHALL REMAIN PROPERTY OF THE OWNER OR DISPOSED OF LEGALLY, AS DIRECTED BY OWNER.
37. PROVIDE SELECTIVE CEILING DEMOLITION TO PLACE NEW DUCTWORK AND DIFFUSERS. REPLACE DAMAGED CEILING TILES AND GRIDS IN DEMOLITION AREA. NEW CEILING TILES SHALL MATCH THOSE BEING REPLACED.
38. PROVIDE TEST AND BALANCE OF ANY AND ALL SYSTEMS SERVING SPACES WITHIN THE LIMITS OF CONSTRUCTION. TEST AND BALANCE SHALL BE CONDUCTED PER MECHANICAL SPECIFICATIONS. THE FINAL TEST AND BALANCE REPORT SHALL BE SUBMITTED AND REVIEWED.

Architecture
Planning

DorschnerAssociates, Inc.
122 W Washington Ave, Suite 100
Madison, Wisconsin 53703



275 West Wisconsin Avenue, Suite 300
Milwaukee, WI 53203
414 / 259 1500
414 / 259 0037 fax

ISSUED

ISSUED FOR BID 04.27.21

Dane County Dept. of Public Works
Highway and Transportation
Bid No. 320029

PROJECT
CHILD SUPPORT AGENCY
REMODEL - SUITE 365
CITY-COUNTY BUILDING
210 MARTIN LUTHER KING, JR.
BLVD., MADISON, WI

DRAWING
MECHANICAL
SCHEDULES AND
DETAILS
DATE
08.20.20

M6.1

GRILLE, REGISTER, AND DIFFUSER SCHEDULE

NOTES:
1. [NOTE]

TAG	DESCRIPTION	MAX AIRFLOW (CFM)	DUCT CONNECTION SIZE			MODULE SIZE		MAX NC	MODEL	MANUFACTURER
			ROUND INLET DIAMETER	INLET WIDTH	INLET HEIGHT	LENGTH	WIDTH			
(XR)CD	SQUARE PLAQUE CEILING DIFFUSER	0	8"			24"	24"	0	-	-
(XRR)CD	SQUARE PLAQUE CEILING DIFFUSER	0	8"			24"	24"	0	-	-
CD-1	SQUARE PLAQUE CEILING DIFFUSER	100	6"			24"	24"	25	SPD	PRICE
TG-1	45 DEGREE DEFLECTION	250		10"	10"	12"	12"	20	530	PRICE

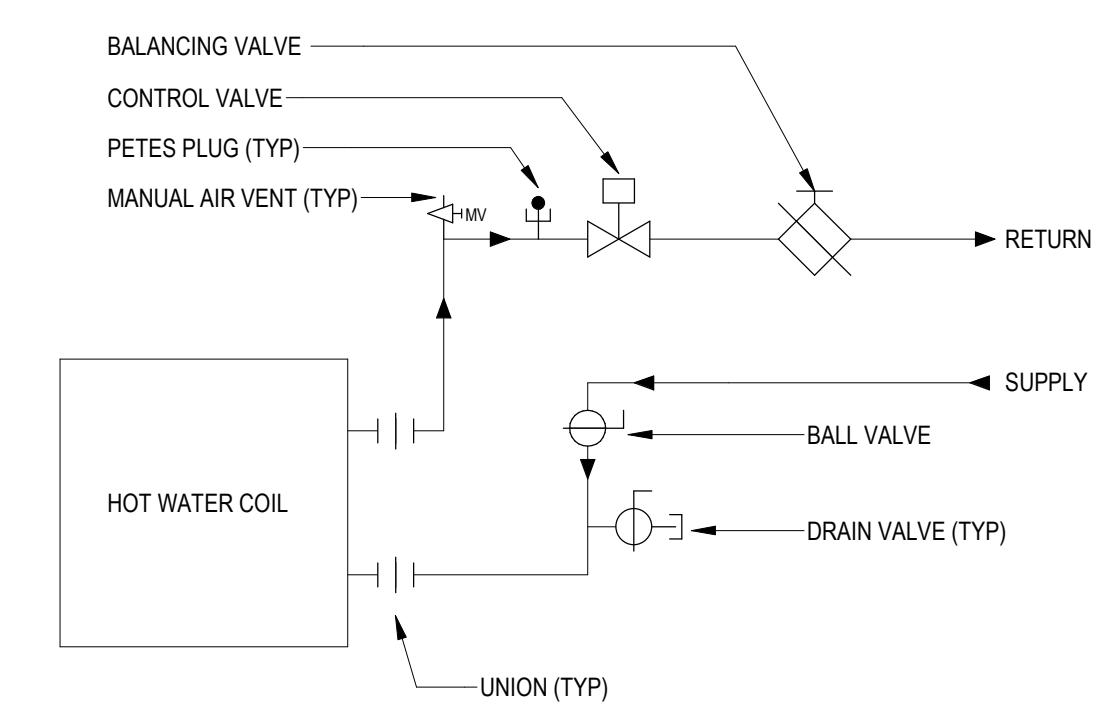
VAV BOX HOT WATER REHEAT SCHEDULE

GENERAL NOTES:
A HEATING CAPACITY BASED ON MAXIMUM HEATING AIRFLOW.

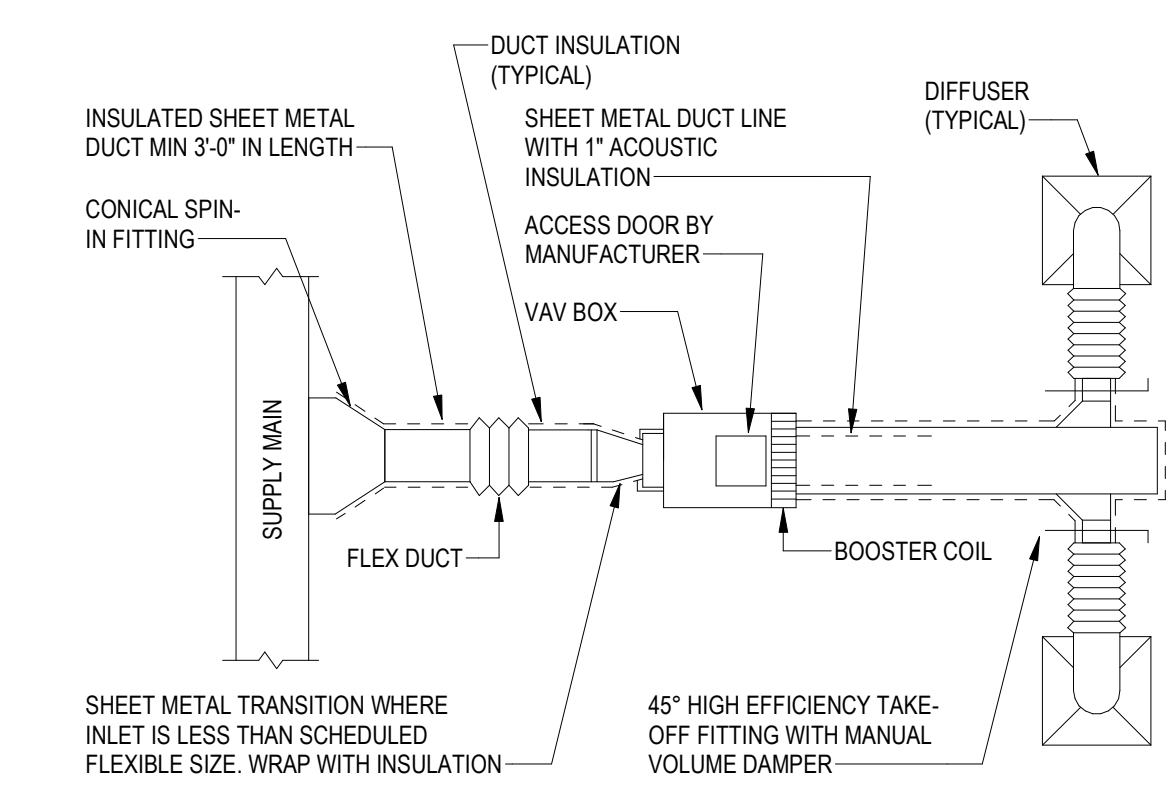
TAG	SERVED BY	INLET DIA.	MINIMUM AIRFLOW SETPOINTS OCCUPIED (CFM)	MAXIMUM AIRFLOW SETPOINTS		HOT WATER HEATING COIL										NOTES
				COOLING (CFM)	HEATING (CFM)	CAPACITY (BTUH)	EAT (°F)	LAT (°F)	FLOW (GPM)	EWI (°F)	LWT (°F)	ROWS	WPD (FT-H2O)	APD (IN-WG)	FLUID TYPE	
VAV-01	(X)AHU	6"	80	180	150	7	55	99	0.7	180	160	1	0.3	0.04	WATER	--
VAV-02	(X)AHU	6"	100	360	200	9	55	95	0.9	180	160	1	0.4	0.1	WATER	--

EXISTING VAV BOX SCHEDULE

UNIT NO.	SERVICE	EXISTING CFM	NEW CFM	NEW MINIMUM CFM
(X)VAV-11	NOT IN SCOPE	585 CFM		
(X)VAV-12	365 AI, 365 AJ	330 CFM	290 CFM	100 CFM
(X)VAV-13	365AZ, 365 AM, 636 AD	440 CFM	440 CFM	100 CFM
(X)VAV-14	NOT IN SCOPE	840 CFM		
(X)VAV-20	365 AX, 365 BJ	525 CFM	400 CFM	260 CFM
(X)VAV-21	365 BI, 365 BH, 365 BG	350 CFM	300 CFM	100 CFM



1 HOT WATER PIPING TO VAV BOX



NOTES:
1. DUCT CONNECTION TO BOX SHALL NOT HAVE ANY BENDS WITHIN THREE DUCT DIAMETERS UPSTREAM OF VAV BOX
2. MAXIMUM LENGTH OF FLEXIBLE DUCT NOT TO EXCEED 6'-0" TO SUPPLY GRILLES, TYPICAL.
3. FLEXIBLE AIR DUCT CONNECTION NOT MANDATORY TO INLET TO NON-FAN POWERED BOXES, BUT ALLOWED TO ACCOMMODATE MINOR OFFSETS. MAXIMUM LENGTH 3'-0"
4. BRANCH DUCT SERVING AN INDIVIDUAL BOX MAY BE THE SAME SIZE AS THE BOX INLET, PROVIDED THE EQUIVALENT LENGTH OF THE BRANCH DUCT AS SHOWN ON THE PLANS DOES NOT EXCEED 10'-0". FOR LARGER LENGTHS, INCREASE THE DUCT SIZE AND PROVIDE A DUCT TRANSITION TO MAINTAIN DUCT STATIC PRESSURE DROP AT OR BELOW 0.2"/100.

2 TYPICAL VAV BOX INSTALLATION

4/26/2021 10:54:49 AM

ABBREVIATIONS

A	AMP	MLO	MAIN LUGS ONLY
ACT	ABOVE COUNTER TOP	MRF	MULTI-RECEPTACLE, # INDICATES MULTI-RECEPTACLE DESIGNATION
AFF	ABOVE FINISHED FLOOR	MS	MANUAL STARTER
AFG	ABOVE FINISHED GRADE	MSB	MANUAL SWITCHBOARD
ALT	ALTERNATE	MSP	MANUAL SWITCH WITH PILOT LIGHT
AQ	AQUA-STAT	MT	EMPTY
AS	AS SHOWN	MTO	MOUNTED
AU	AT UNIT	NC	NEAR CIRCULATOR (REFER TO HVAC & PLUMBING DRAWINGS FOR EXACT LOCATION.)
B, JB	JUNCTION BOX	NIC	NOT IN CONTRACT
BCP	BOILER CONTROL PANEL	NP	NEAR PUMP (REFER TO HVAC & PLUMBING DRAWINGS FOR EXACT LOCATION.)
BD#	BUS DUCT, # INDICATES BUS DUCT DESIGNATION	NTS	NOT TO SCALE
BFG	BELOW FINISHED GRADE	NU	NEAR UNIT (REFER TO HVAC & PLUMBING DRAWINGS FOR EXACT LOCATION.)
BOL	BUILT-IN OVERLOAD	OOS	ON/OFF SWITCH
C	CONTACTOR	OU	ON UNIT
CB, C/B	CIRCUIT BREAKER(S)	P#	PHOTOCELL, # INDICATES PHOTOCELL DESIGNATION
CCB	COMBINATION CIRCUIT BREAKER FULL VOLTAGE STARTER	PBL	PUSH BUTTON WITH PILOT LIGHT
CDT	CONDUIT	PBS	PUSH BUTTON STATION
CEF	CEILING EXHAUST FAN	PC	PLUMBING CONTRACTOR
CF	COMBINATION FUSIBLE FULL VOLTAGE STARTER	PCP	PRE-WIRED CONTROL PANEL
CKT	CIRCUIT	PE	PNEUMATIC ELECTRIC SWITCH
CM	CONSTRUCTION MANAGER	PEC	PROJECT ELECTRICAL CONTRACTOR
CPT	CONTROL POWER TRANSFORMER	PL	PILOT LIGHT
CS	COMBINATION STARTER	PRV	POWER ROOF VENTILATOR
CU	COPPER	PW	PART WINGING STARTER
CUH	CABINET UNIT HEATER	R	RECEPTACLE
D, DS	DISCONNECT SWITCH	RAF	RETURN AIR FAN
DD	DOUBLE DUPLEX	RAI	REMAIN AS IS
DM	DOOR MANUFACTURER	RAT	REVERSE ACTING THERMOSTAT
DN	DOWN	RMN	EXISTING TO REMAIN
DRWGS	DRAWINGS	RMV	EXISTING TO BE REMOVED
EC	BY ELECTRICAL CONTRACTOR	RPL	EXISTING TO BE RELOCATED
EDH	ELECTRIC DUCT HEATER	RVS	REDUCED VOLTAGE STARTER
EF	EXHAUST FAN	S	STERILIZER
EM	EMERGENCY	SAV	SOLENOID AIR VALVE
EP	EXPLOSION PROOF	SC	STERILIZER CONTROLS
ER	EXISTING TO BE REMOVED	SF	SUPPLY FAN
ERL	EXISTING RELOCATED (NEW LOCATION)	SP	SHOCKPROOF
ET	ELAPSED TIMER	SPC	SPACE
ETL	EXISTING TO BE RELOCATED (OLD LOCATION)	SPR	SPARE
EUH	ELECTRIC UNIT HEATER	SPS	SELECTOR SWITCH
EWH	ELECTRIC WALL HEATER	SS	SPEED SWITCH
EX	EXISTING TO REMAIN	S/S	SPEAKER/STROBE
F	FURNISHED BY	SSP	START-STOP WITH PILOT LIGHT
FS	FLOW SWITCH	STAT	THERMOSTAT
FZS	FREEZE STAT	SVS	SUPERVISORY SWITCH
G, GF1	GROUND FAULT INTERRUPTER TYPE	SWBD	SWITCHBOARD
GC	PROJECT GENERAL CONTRACTOR	SWGR	SWITCH GEAR
GND, GRND	GROUND	TC	TIME CLOCK
GS	MAGNETIC STARTER	TCC	TEMPERATURE CONTROL CONTRACTOR
GV	GATE VALVE	TCP	TEMPERATURE CONTROL PANEL
H, HV	HEATING/VENTILATING CONTRACTOR	TL#	TRACK LIGHT, # INDICATES TRACK LIGHT DESIGNATION
HOA	HAND/OFF/AUTO SELECTOR SWITCH	TO	TYPICAL OUTLET
HP	HORSEPOWER	TS	TAMPER SWITCH
HIS	HORN/STROBE	TV	TELEVISION
I	INSTALLED BY	UFD	UNDERFLOOR DUCT
IG	ISOLATED GROUND	UG	UNDERGROUND
IL	INTERLOCK	UGD	UNDERGROUND DUCT
IS	IN STARTER COVER	UH	UNIT HEATER
IU	IN UNIT	UO	UNIQUE OUTLET
KS	KEY SWITCH	UOI	UNLESS OTHERWISE INDICATED
KVA	KILOVOLT-AMPERES	USS	UNIT SUBSTATION
KW	KILOWATT	V	VENDOR SUPPLYING EQUIPMENT
LD	LOAD (KW OR HP)	W	WIRED BY
LVT	LINE VOLTAGE THERMOSTAT (120V)	W	WITH
MCB	MAIN CIRCUIT BREAKER	WP	WEATHERPROOF
MD	MOTORIZED DAMPER	WT	WIRING TROUGH
MFR	MANUFACTURER	XFR	TRANSFORMER
MG	MOTOR GENERATOR		

FIRE ALARM SYMBOLS

	NEW FIRE ALARM CONTROL PANEL
	EXISTING FIRE ALARM CONTROL PANEL
	NEW FIRE ALARM ANNUNCIATOR PANEL
	EXISTING FIRE ALARM ANNUNCIATOR PANEL
	EXISTING FIRE ALARM ANNUNCIATOR PANEL
	NEW FIRE ALARM PULL STATION 48" AFF
	EXISTING FIRE ALARM PULL STATION
	NEW (HORN/STROBE) (SPEAKER/STROBE) 80" AFF TO BOTTOM OF BOX OR 6" DOWN FROM CEILING TO TOP OF BOX WHICH EVER IS LOWER
	EXISTING (HORN/STROBE) (SPEAKER/STROBE)
	NEW PULL STATION WITH NEW (HORN/STROBE) (SPEAKER/STROBE) 80" AFF ABOVE
	EXISTING FIRE ALARM PULL STATION WITH EXISTING (HORN/STROBE) (SPEAKER/STROBE) ABOVE
	NEW (INTELLIGENT) (CONVENTIONAL) PHOTOELECTRIC SMOKE DETECTOR
	NEW (INTELLIGENT) (CONVENTIONAL) PHOTOELECTRIC SMOKE DETECTOR FOR ELEVATOR RECALL
	NEW (INTELLIGENT) (CONVENTIONAL) PHOTOELECTRIC SMOKE DETECTOR SELF CONTAINED
	EXISTING (INTELLIGENT) (CONVENTIONAL) SMOKE DETECTOR
	NEW (INTELLIGENT) (CONVENTIONAL) 135°F FIXED & RATE OF RISE (15°F/M) (20°F/M) UNLESS NOTED ON THE PLANS
	EXISTING (INTELLIGENT) (CONVENTIONAL) HEAT DETECTOR
	NEW (INTELLIGENT) (CONVENTIONAL) PHOTOELECTRIC DUCT SMOKE DETECTOR
	EXISTING (INTELLIGENT) (CONVENTIONAL) DUCT SMOKE DETECTOR
	NEW ADDRESSABLE MONITOR MODULE
	NEW ADDRESSABLE CONTROL MODULE
	NEW SPRINKLER TAMPER SWITCH (PROVIDE ADDRESSABLE MODULE)
	EXISTING SPRINKLER TAMPER SWITCH
	NEW SPRINKLER FLOW SWITCH (PROVIDE ADDRESSABLE MODULE)
	EXISTING SPRINKLER FLOW SWITCH
	NEW MAGNETIC DOOR HOLDER (SEN) SENTRONIC
	EXISTING MAGNETIC DOOR HOLDER (SEN) SENTRONIC
	NEW ELECTRIC DOOR STRIKE
	EXISTING ELECTRIC DOOR STRIKE
	NEW FIRE ALARM STROBE - ADA RATED 80" TO BOTTOM OF BOX OR 6" DOWN FROM CEILING TO TOP OF BOX WHICH EVER IS LOWER
	NEW FIRE FIGHTER'S TELEPHONE JACK
	NEW FIRE SUPPRESSION CONTROL PANEL
	EXISTING FIRE SUPPRESSION CONTROL PANEL (CONNECT TO NEW SYSTEM)
	EXISTING (FAN SHUT DOWN) (OTHER) RELAY
	(FAN SHUT DOWN) (OTHER) RELAY
	JUNCTION BOX
	PRESSURE SWITCH
	SMOKE DAMPER
	REMOTE TEST SWITCH AND/OR INDICATOR

ELECTRICAL SYMBOLS

	INDUSTRIAL STRIP FIXTURE
	RECESSED, SURFACE OR PENDANT FIXTURE
	WALL BRACKET FIXTURE
	TRACK LIGHTING
	RECESSED FIXTURE
	SURFACE FIXTURE
	WALL WASH FIXTURE
	WALL MOUNTED FIXTURE
	EMERGENCY BATTERY UNIT - CEILING MOUNTED
	EMERGENCY BATTERY UNIT - WALL MOUNTED
	MOUNTED EXIT SIGN - CEILING MOUNTED
	MOUNTED EXIT SIGN - WALL MOUNTED
	CEILING MOUNTED EXIT SIGN & EMERGENCY BATTERY COMBO UNIT - CEILING MOUNTED
	CEILING MOUNTED EXIT SIGN & EMERGENCY BATTERY COMBO UNIT - WALL MOUNTED
	CEILING FAN
	CONTACTOR
	TIME CLOCK
	OCCUPANCY SENSOR (AUTO OFF / AUTO FULL ON) - CEILING MOUNTED
	OCCUPANCY SENSOR (AUTO OFF / AUTO 50% ON) - CEILING MOUNTED
	VACANCY SENSOR (AUTO OFF / MANUAL ON BY MANUAL SWITCH) - CEILING MOUNTED
	DAYLIGHT SENSOR
	DAYLIGHT SENSOR WITH OCCUPANCY SENSOR (AUTO OFF / AUTO FULL ON)
	SINGLE POLE TOGGLE SWITCH - MOUNT 48" ABOVE FLOOR TO TOP OF BOX - (3) THREE WAY - (4) FOUR WAY - (K) KEY - (P) PILOT LIGHT - (OS) OCCUPANCY SENSOR (AUTO OFF / AUTO FULL ON) - (VS) VACANCY SENSOR (AUTO OFF / MANUAL ON)
	DUAL LEVEL SWITCH - MOUNT 48" ABOVE FLOOR TO TOP OF BOX - (3) THREE WAY - (4) FOUR WAY - (K) KEY - (P) PILOT LIGHT - (OS) OCCUPANCY SENSOR (AUTO OFF / AUTO FULL ON) - (VS) VACANCY SENSOR (AUTO OFF / MANUAL ON)
	DIMMER SWITCH - MOUNT 48" ABOVE FLOOR TO TOP OF BOX - (3) THREE WAY - (4) FOUR WAY - (OS) OCCUPANCY SENSOR (AUTO OFF / AUTO FULL ON) - (VS) VACANCY SENSOR (AUTO OFF / MANUAL ON)
	LOW VOLTAGE SWITCH - SINGLE GANG - MOUNT 48" ABOVE FLOOR TO TOP OF BOX - ON/OFF PUSH BUTTON SWITCH WITH (OS) OCCUPANCY SENSOR (AUTO OFF / FULL ON) - (OSA) OCCUPANCY SENSOR (AUTO OFF / AUTO 50% ON) - (VS) VACANCY SENSOR (AUTO OFF / MANUAL ON)
	LOW VOLTAGE SWITCH - SINGLE GANG - MOUNT 48" ABOVE FLOOR TO TOP OF BOX - ON/OFF DIMMER PUSH BUTTON SWITCH WITH (OS) OCCUPANCY SENSOR (AUTO OFF / FULL ON) - (OSA) OCCUPANCY SENSOR (AUTO OFF / AUTO 50% ON) - (VS) VACANCY SENSOR (AUTO OFF / MANUAL ON)
	LOW VOLTAGE SWITCH - SINGLE GANG - MOUNT 48" ABOVE FLOOR TO TOP OF BOX - 1 TO 4 ZONE(S) ON/OFF PUSH BUTTON SWITCH(ES) - NUMBER (#) INDICATES THE TOTAL NUMBER OF ZONES AND ON/OFF PUSH BUTTONS.
	LOW VOLTAGE SWITCH - SINGLE GANG - MOUNT 48" ABOVE FLOOR TO TOP OF BOX - 1 TO 4 ZONE(S) ON/OFF DIMMER PUSH BUTTON SWITCH(ES) - NUMBER (#) INDICATES THE TOTAL NUMBER OF ZONES AND ON/OFF DIM PUSH BUTTONS.
	LOW VOLTAGE SWITCH - SINGLE GANG - MOUNT 48" ABOVE FLOOR TO TOP OF BOX - ON/OFF PUSH BUTTON WITH PRESET STEP LEVEL DIMMING
	LOW VOLTAGE SWITCH - SINGLE GANG - MOUNT 48" ABOVE FLOOR TO TOP OF BOX - ON/OFF DIMMER PUSH BUTTON WITH PRESET 4 LEVEL DIMMING
	LOW VOLTAGE SWITCH - SINGLE OR DOUBLE GANG - MOUNT 48" ABOVE FLOOR TO TOP OF BOX - TOUCH SCREEN GRAPHIC INTERFACE WITH MULTI-ZONE AND SCENE CONTROLS

	SWITCH AND DUPLEX RECEPTACLE - DOUBLE GANG BOX - MOUNT 48" ABOVE FLOOR TO TOP OF BOX - (3) THREE WAY - (4) FOUR WAY - (OS) OCCUPANCY SENSOR (AUTO OFF / AUTO FULL ON) - (VS) VACANCY SENSOR (AUTO OFF / MANUAL ON) - (GFI) GROUND FAULT CIRCUIT INTERRUPTER
	DUPLEX RECEPTACLE - MOUNT 15" ABOVE FLOOR TO BOTTOM OF BOX OR HEIGHT AS INDICATED - (GFI) GROUND FAULT CIRCUIT INTERRUPTER - (WP) WEATHER PROOF
	DOUBLE DUPLEX RECEPTACLE - MOUNT 15" ABOVE FLOOR TO BOTTOM OF BOX OR HEIGHT AS INDICATED
	DUPLEX RECEPTACLE - MOUNT HORIZONTAL ABOVE COUNTER - (GFI) GROUND FAULT CIRCUIT INTERRUPTER
	DOUBLE DUPLEX RECEPTACLE - MOUNT ABOVE COUNTER
	FLOOR BOX
	POKE-THRU
	DEAD FRONT GFCI
	SPECIAL OUTLET
	MOTOR
	DISCONNECT SWITCH
	JUNCTION BOX
	PUSHBUTTON - MOUNT 48" TO TOP OF BOX
	MULTI-OUTLET ASSEMBLY
	SURGE PROTECTION DEVICE
	ELECTRICAL PANEL
	MAIN GROUND BUS
	TELECOM GROUND BUS
	TELEPHONE OUTLET - MOUNT 15" ABOVE FLOOR TO BOTTOM OF BOX - (W) WALL PHONE MOUNT 48" TO TOP OF BOX (C) ABOVE COUNTER OR HEIGHT AS INDICATED
	VOICE/DATA OUTLET - MOUNT 15" ABOVE FLOOR TO BOTTOM OF BOX (C) ABOVE COUNTER OR HEIGHT AS INDICATED
	VIDEO OUTLET - MOUNT 15" ABOVE FLOOR TO BOTTOM OF BOX (C) ABOVE COUNTER OR HEIGHT AS INDICATED
	DATA OUTLET - MOUNT 15" ABOVE FLOOR TO BOTTOM OF BOX (C) ABOVE COUNTER OR HEIGHT AS INDICATED
	WIRELESS ACCESS POINT
	TELEVISION OUTLET - MOUNT 15" ABOVE FLOOR TO BOTTOM OF BOX OR HEIGHT AS INDICATED
	MICROPHONE JACK
	SPEAKER - CEILING MOUNT - FLUSH
	SPEAKER - CEILING MOUNT - SURFACE
	SPEAKER - WALL MOUNTED
	VOICE EVACUATION SPEAKER
	AREA OF RESCUE ASSISTANCE DEVICE - (AP) ANNUNCIATOR PANEL (PH) PUSH FOR HELP (PS) POWER SUPPLY - SEE SECTION 27 41 00 AND RISER ON SHEET E**
	CLOCK - MOUNT 18" BELOW FINISHED CEILING OR HEIGHT INDICATED
	BELL
	DETAIL NUMBER
	NOTE OR DETAIL SYMBOL
	SHEET LOCATION

Architecture
Planning

Dorschner Associates, Inc.
122 W Washington Ave, Suite 100
Madison, Wisconsin 53703

2020-0201.00



275 West Wisconsin Avenue, Suite 300
Milwaukee, WI 53203
414 / 259 1500
414 / 259 0037 fax

ISSUED

ISSUED FOR BID 04.27.21

Dane County Dept. of Public Works
Highway and Transportation
Bid No. 320028

PROJECT
CHILD SUPPORT AGENCY
REMODEL - SUITE 365
CITY-COUNTY BUILDING
210 MARTIN LUTHER KING,
JR. BLVD., MADISON, WI

DRAWING
ELECTRICAL SYMBOLS,
ABBREVIATIONS AND SHEET
INDEX
DATE
08.20.20

E0.0

LIGHT FIXTURE SCHEDULE

DES	PERFORMANCE DATA		DESCRIPTION	LIGHT FIXTURE		VOLT	LED DRIVER		MOUNT	CEILING TYPE	DEPTH	OPTIONS / ACCESSORIES	ACCEPTABLE MANUFACTURERS	SEE NOTE
	LUMENS	SYSTEM WATTAGE		MANUFACTURER	CATALOG SERIES		INTEGRAL	REMOTE						
A	4000	51	LINEAR LED	AXIS	202LEDSL80/20-1000-90-35-PL-4-AP-UNV-DP-CT1536	120	X		P	LG	-			
B	3400	30	2X2 FLAT PANEL	METALUX	22CZ-LD5-34-UNV-L835-CD1-U	120	X		R	LG	2"			
C	800	102	LINEAR LED	AXIS	202LEDSL80/20-1000-90-35-PL-8-AP-UNV-DP-CT1536	120	X		P	LG	-			

NOTE: SEE SPECIFICATION SECTIONS FOR ADDITIONAL INFORMATION REGARDING FIXTURE AND INSTALLATION REQUIREMENTS. PROVIDE OPTIONS AND ACCESSORIES REFERENCED BY THE COLUMN TITLED "OPTIONS / ACCESSORIES". MANUFACTURES LISTED AS ACCEPTABLE SHALL MEET ALL REQUIREMENTS AND FEATURES INDICATED. ACCEPTABLE MANUFACTURERS MUST MEET THE PHOTOMETRIC PERFORMANCE OF THE LISTED UNIT.

CEILING TYPE ABBREVIATIONS:	PL = PLASTER	V = VARIES
DW = DRYWALL	PO = POLE	W = WALL MOUNTED
ES = EXPOSED STRUCTURE	R = RECESSED	
LG = LAY-IN GRID	S = SURFACE	
P = PENDANT		

ELECTRICAL SHEET INDEX	
SHEET NUMBER	SHEET NAME
E0	ELECTRICAL SYMBOLS, ABBREVIATIONS AND SHEET INDEX
E1.0	PARTIAL THIRD FLOOR ELECTRICAL DEMOLITION PLAN
E1.1	PARTIAL THIRD FLOOR LIGHTING PLAN
E1.2	PARTIAL THIRD FLOOR POWERSYSTEMS PLAN
E1.3	ELECTRICAL DETAILS
E	*
E	*
E	*

Architecture
Planning

DorschnerAssociates, Inc.
122 W Washington Ave, Suite 100
Madison, Wisconsin 53703

2020-0201.00

GRÄEF
275 West Wisconsin Avenue, Suite 300
Milwaukee, WI 53203
414 / 259 1500
414 / 259 0037 fax

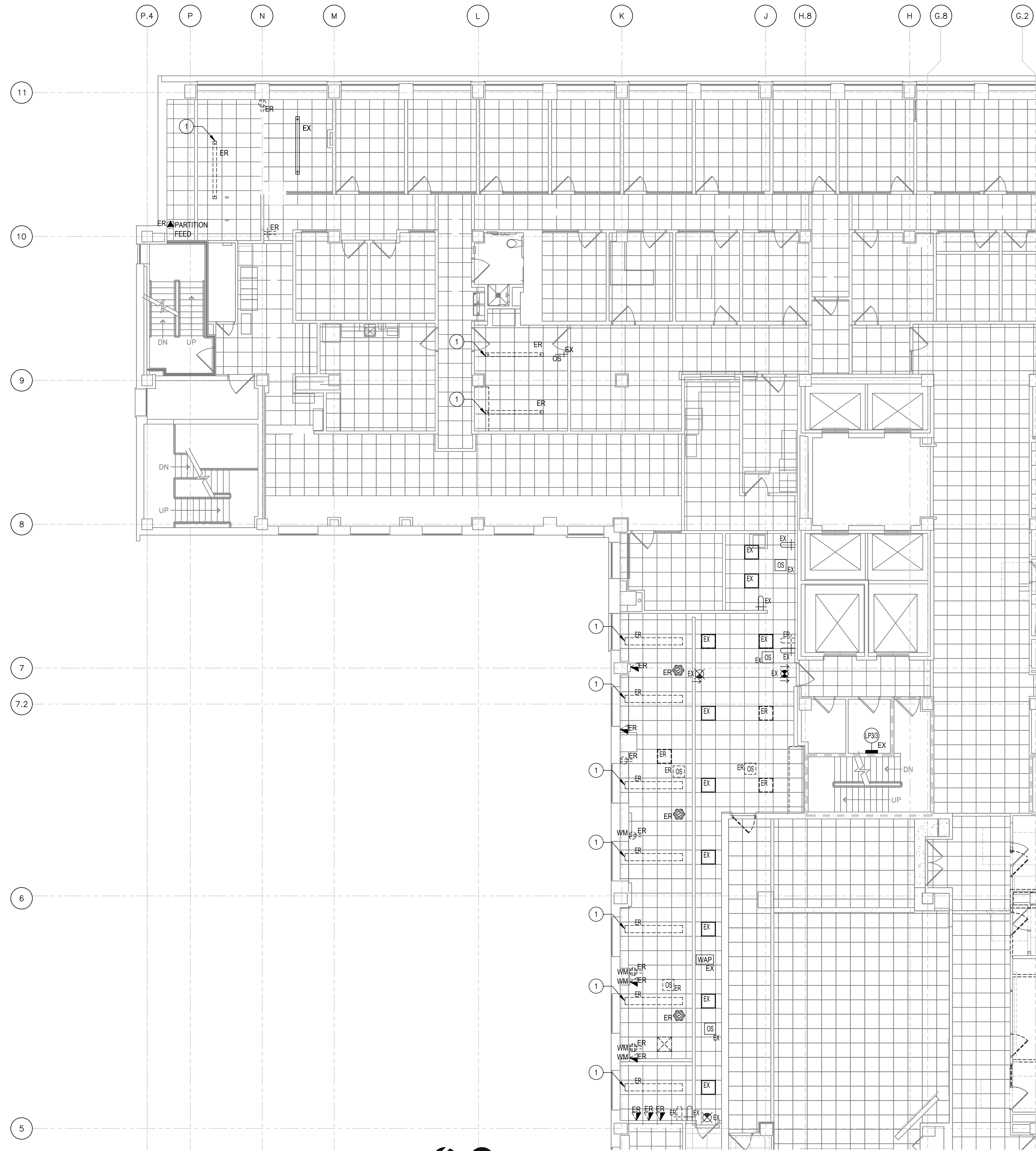
ISSUED

ISSUED FOR BID 04.27.21

Dane County Dept. of Public Works
Highway and Transportation
Bid No. 320028

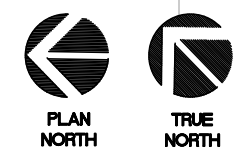
PROJECT
CHILD SUPPORT AGENCY
REMODEL - SUITE 365
CITY-COUNTY BUILDING
210 MARTIN LUTHER KING,
JR. BLVD., MADISON, WI

DRAWING
PARTIAL THIRD FLOOR
ELECTRICAL DEMOLITION
PLAN
DATE
08.20.20



KEYED NOTES THIS SHEET
1 SALVAGE FOR REUSE.

1 PARTIAL THIRD FLOOR ELECTRICAL DEMOLITION PLAN
1/8"=1'-0"



Architecture
Planning

DorschnerAssociates, Inc.
122 W Washington Ave, Suite 100
Madison, Wisconsin 53703

2020-0201.00
GRÄEF
275 West Wisconsin Avenue, Suite 300
Milwaukee, WI 53203
414 / 259 1500
414 / 259 0037 fax

ISSUED

ISSUED FOR BID 04.27.21

Dane County Dept. of Public Works
Highway and Transportation
Bid No. 320028

PROJECT
CHILD SUPPORT AGENCY
REMODEL - SUITE 365
CITY-COUNTY BUILDING
210 MARTIN LUTHER KING,
JR. BLVD., MADISON, WI

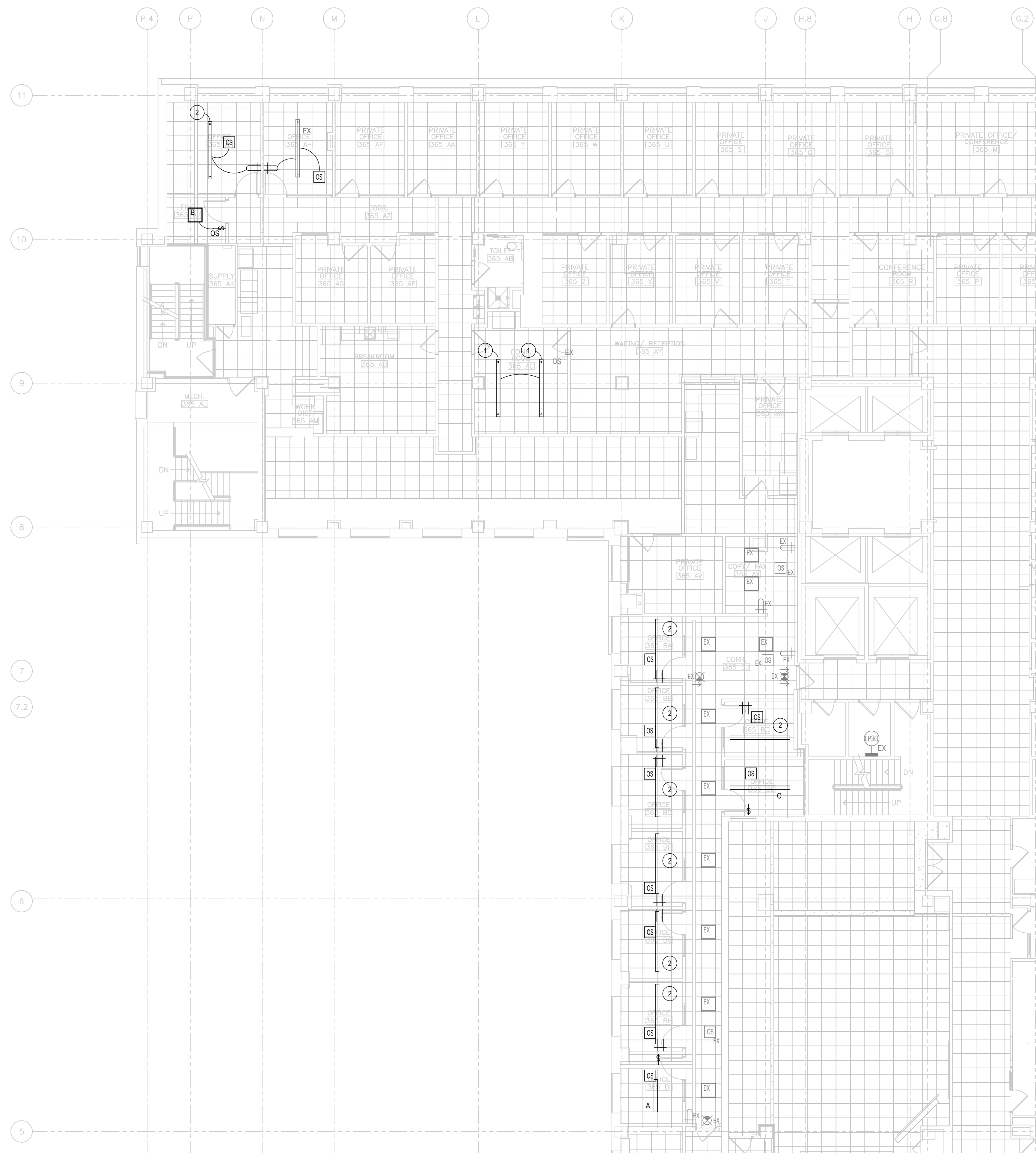
DRAWING
PARTIAL THIRD FLOOR
LIGHTING PLAN

DATE
08.20.20

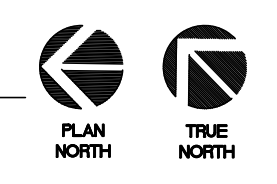
E1.1

GENERAL NOTES
1. WIRE NEW LIGHTING TO EXISTING CIRCUITS SERVING AREA.

KEYED NOTES THIS SHEET
1 REINSTALL EXISTING FIXTURES ORIENTED EAST AND WEST.
2 SALVAGED FIXTURE REINSTALLED.



1 PARTIAL THIRD FLOOR LIGHTING PLAN
1/8"=1'-0"



Architecture
Planning

DorschnerAssociates, Inc.
122 W Washington Ave, Suite 100
Madison, Wisconsin 53703

2020-0201.00

GRÄEF
275 West Wisconsin Avenue, Suite 300
Milwaukee, WI 53203
414 / 259 1500
414 / 259 0037 fax

ISSUED

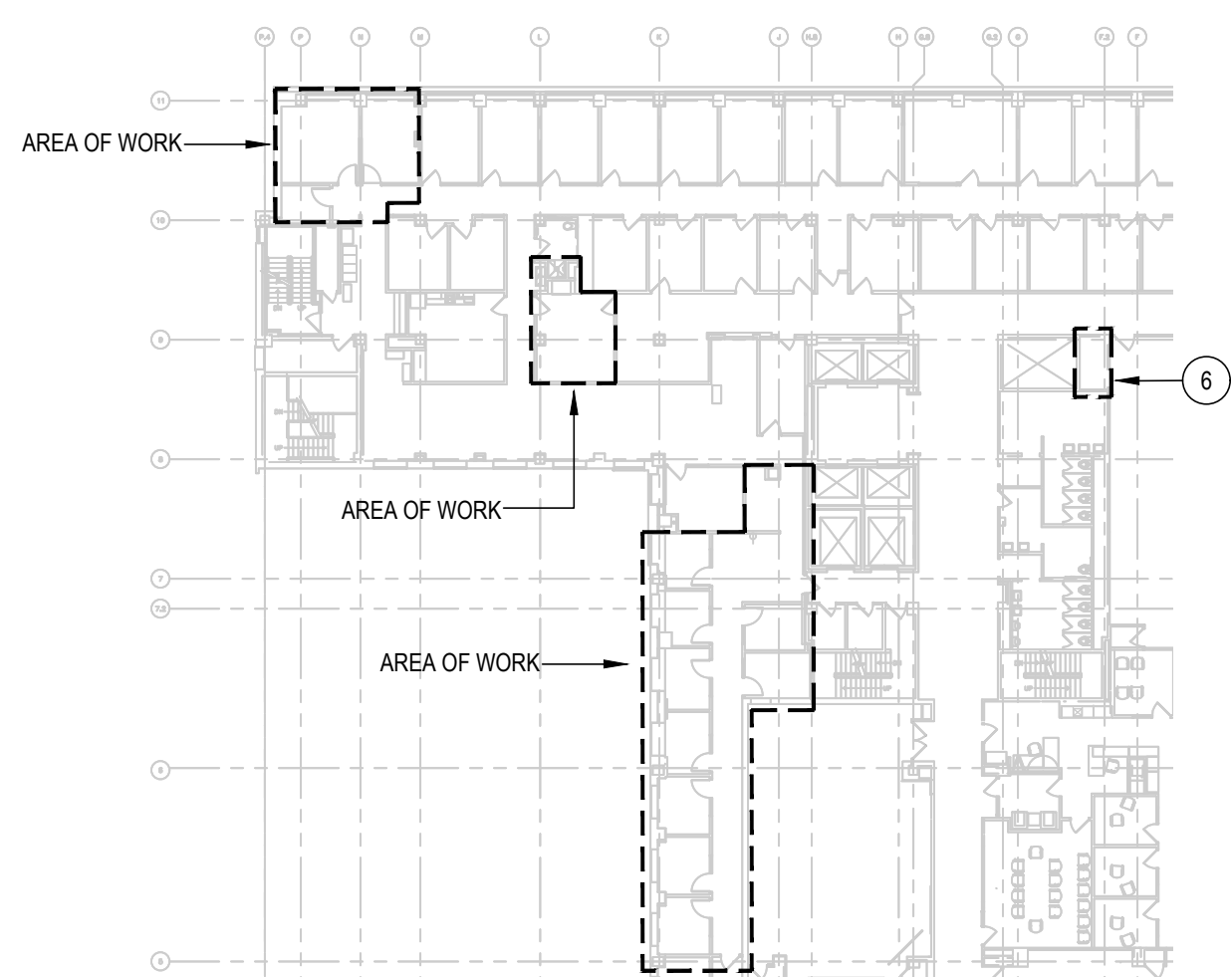
ISSUED FOR BID 04.27.21

Dane County Dept. of Public Works
Highway and Transportation
Bid No. 320028

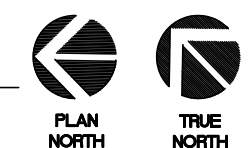
PROJECT
CHILD SUPPORT AGENCY
REMODEL - SUITE 365
CITY-COUNTY BUILDING
210 MARTIN LUTHER KING,
JR. BLVD., MADISON, WI

DRAWING
PARTIAL THIRD FLOOR
POWER/SYSTEMS PLAN

DATE
08.20.20



2 PARTIAL THIRD FLOOR TELECOM KEY PLAN
1/32"=1'-0"

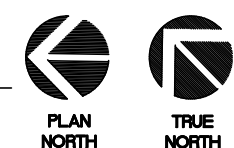


KEYED NOTES THIS SHEET:

- 1 WIRE TO INDIVIDUAL CIRCUIT RELEASED BY DEMOLITION.
- 2 NEW HDMI FEMALE JACK FLUSH IN WALL.
- 3 1-HDMI CABLE IN 1 1/2" C.
- 4 TERMINATE HDMI CABLE ON FEMALE JACK IN PROJECTOR MOUNTING PLATE.
- 5 TERMINATE LOCAL RECEPTACLE CIRCUIT ON DUPLEX RECEPTACLE IN PROJECTOR MOUNTING PLATE.
- 6 EXISTING TELECOM ROOM SERVING PROJECT AREA. ADD 48 PORT PATCH PANEL IN EXISTING RACK AND TERMINATE ALL NEW CABLES ON IT.



1 PARTIAL THIRD FLOOR POWER/SYSTEMS PLAN
1/8"=1'-0"



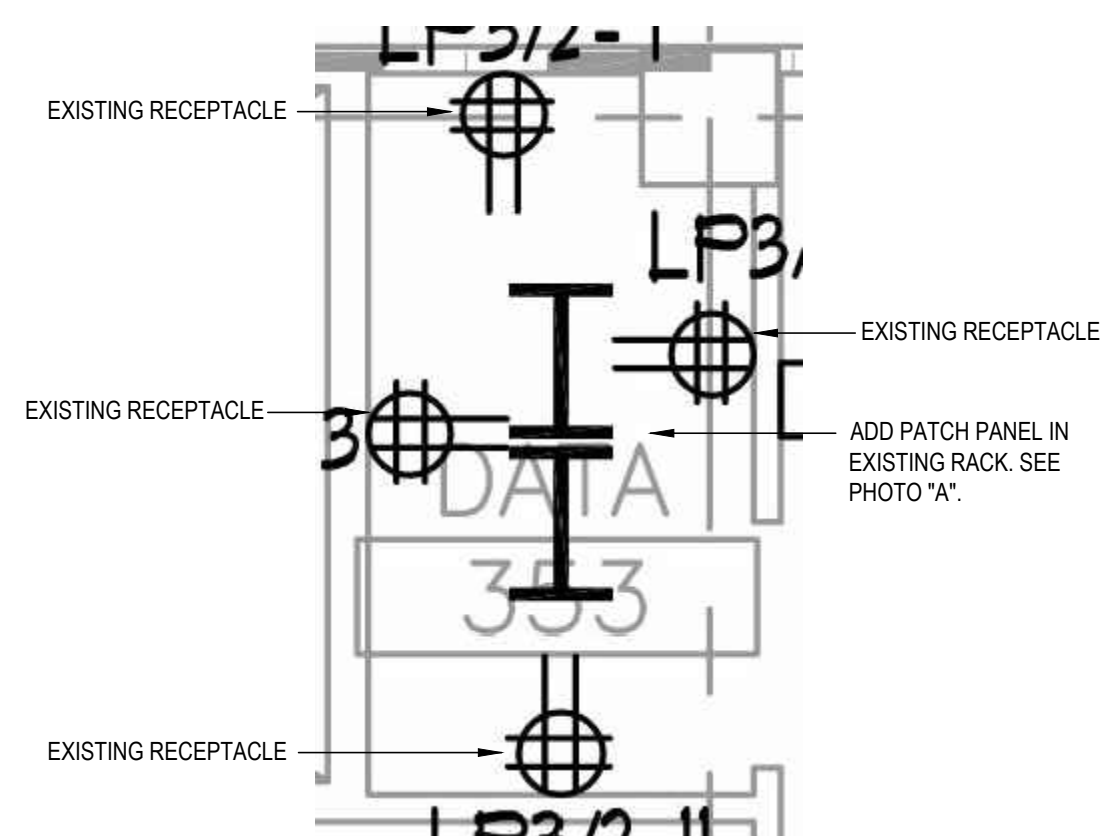
PANEL LP3/3														
225 AMPS MAIN LUG		208Y/120 VOLT, THREE PHASE, FOUR WIRE										LOCATION: SEE PLAN		
MOUNTING TYPE: SURFACE		SHORT CIRCUIT INTERRUPTING RATING: 10 K.A.I.C.												
CIRCUIT BKR.		LOAD DESCRIPTION		LOAD TYPE		PHASE LOADS			CIRCUIT		LOAD TYPE		CIRCUIT BKR.	
AMPS	POLES			WATTS	#	A	B	C	#	WATTS			AMPS	POLES
20	1	5 RECEPTACLES	R	1000	1	0			2					
20	1	6 RECEPTACLES	R	1200	3		0		4					
20	1	6 RECEPTACLES	R	1200	5			0	6					
20	1	4 RECEPTACLES	R	800	7			0	8					
20	1	7 RECEPTACLES	R	1400	9			0	10					
									11					
									12					
								0	13					
									14					
									15					
									16					
									17					
									18					
									19					
									20					
									21					
									22					
									23					
									24					
									25					
									26					
									27					
									28					
									29					
									30					
									31					
									32					
									33					
									34					
									35					
									36					
									37					
									38					
									39					
									40					
									41					
									42					
PANEL TOTAL LOAD =												0.0	KW	
												0.0	AMP	

- NOTES:**
- 1) SHARED NEUTRALS ARE NOT ACCEPTABLE THROUGHOUT THIS PROJECT. EACH BREAKER MUST HAVE A SEPARATE NEUTRAL CONDUCTOR FOR EACH CIRCUIT.
 - 2) ADD BREAKERS IN EXISTING SQUARE D NQ08 PANEL.
 - 3) XXX

Architecture
Planning

Dorschner Associates, Inc.
122 W Washington Ave, Suite 100
Madison, Wisconsin 53703

2020-0201.00
GRÄEF
275 West Wisconsin Avenue, Suite 300
Milwaukee, WI 53203
414 / 259 1500
414 / 259 0037 fax



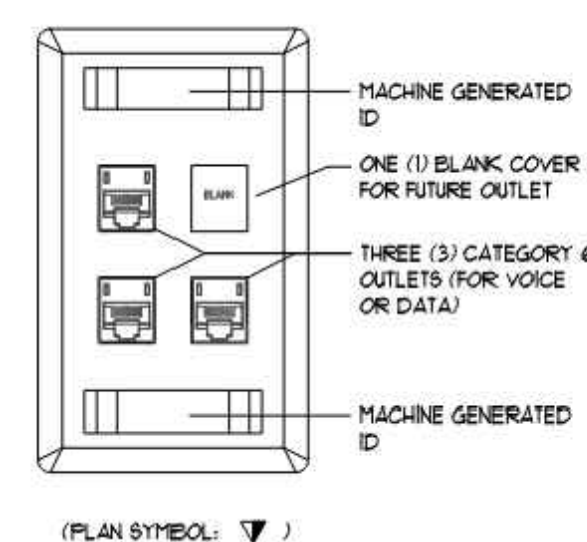
3 EXISTING TELECOM ROOM
N/A



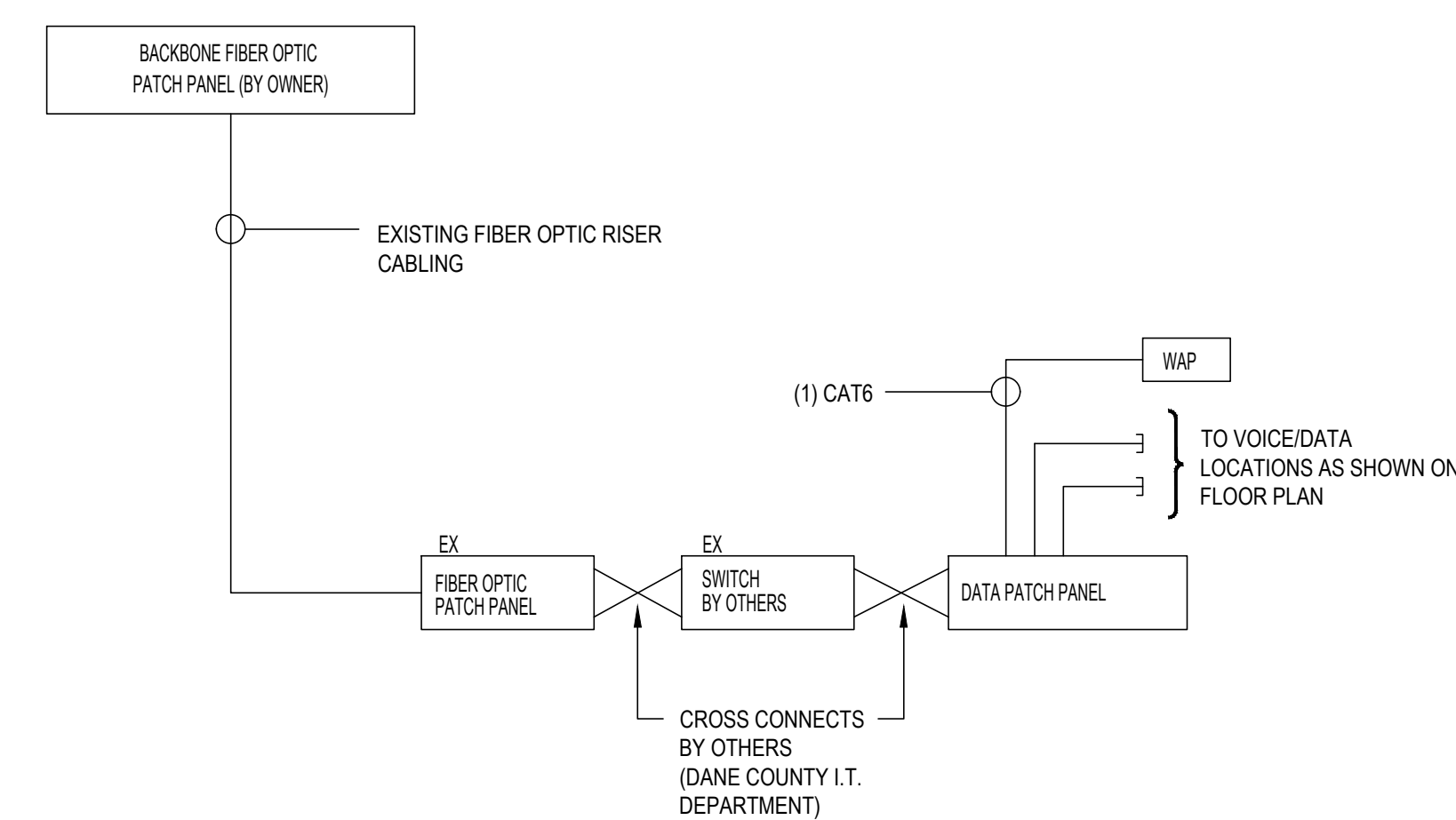
2 PHOTO "A"
N/A



1 PHOTO "B"
N/A



5 TYPICAL WORKSTATION DATA OUTLET DETAIL
N/A



4 DATA RISER DIAGRAM - CAT 6 PERFORMANCE
N/A

ISSUED

ISSUED FOR BID 04.27.21

Dane County Dept. of Public Works
Highway and Transportation
Bid No. 320028

PROJECT

CHILD SUPPORT AGENCY
REMODEL - SUITE 365
CITY-COUNTY BUILDING
210 MARTIN LUTHER KING,
JR. BLVD., MADISON, WI

DRAWING

ELECTRICAL DETAILS

DATE

08.20.20