

DANE COUNTY DEPARTMENT of PUBLIC WORKS, HIGHWAY and TRANSPORTATION

County Executive
Joseph T. Parisi

1919 Alliant Energy Center Way ♦ Madison, Wisconsin 53713
Phone: (608) 266-4018 ♦ Fax: (608) 267-1533

Commissioner / Director
Gerald J. Mandli

November 27, 2013

ATTENTION ALL REQUEST FOR BID (RFB) PROPOSAL HOLDERS

RFB NO. 313086 - ADDENDUM NO. 4

ARCTIC ANIMAL EXHIBIT AND CONCESSIONS

BIDS DUE: THURSDAY, DECEMBER 12, 2013, 2:00 PM.
DUE DATE AND TIME ARE NOT CHANGED BY THIS ADDENDUM.

This Addendum is issued to modify, explain or clarify the original Request for Bid (RFB) and is hereby made a part of the RFB. Please attach this Addendum to the RFB. **Bidders must acknowledge all Addenda on the Bid Form.**

PLEASE MAKE THE FOLLOWING CHANGES:

GENERAL

1. Addendum #3; dated November 25, 2013

- Change the footer of Addendum No. 3 to read "Addendum No. 3" in lieu of Addendum No. 4
- Four sheets (LS1.0, YA1.0, A1.4, A5.6) with modifications described in Addendum No. 3 were not attached; they are attached with this addendum.
- Sheet SG1.0 was included in Addendum #3; however is was noted as an 'enclosure'.

SITE

2. Sheet SD1.0

- Note near northeast corner of site reads "remove portion of existing tunnel- see XXX for infill. Remove pumps and filters. Coordinate with owner for possible re-use". Revise XXX to read "A/SD1.0, M/SA3.0 and structural". Strike "Coordinate with owner for possible re-use". The equipment will not be reused by the owner.

3. Sheet SG1.1

- Added spot grades at existing tunnel/back wall of polar bear yard

4. Sheet ST1.1

- Updated references to themework sections/ elevations
- Eliminated the 6th (last) themework type from the legend

5. Sheet ST1.2

- Updated references to themework sections/ elevations
- Eliminated the 6th (last) themework type from the legend

STRUCTURAL

6. Sheet SR1.3- Bear Pool Wall Plan

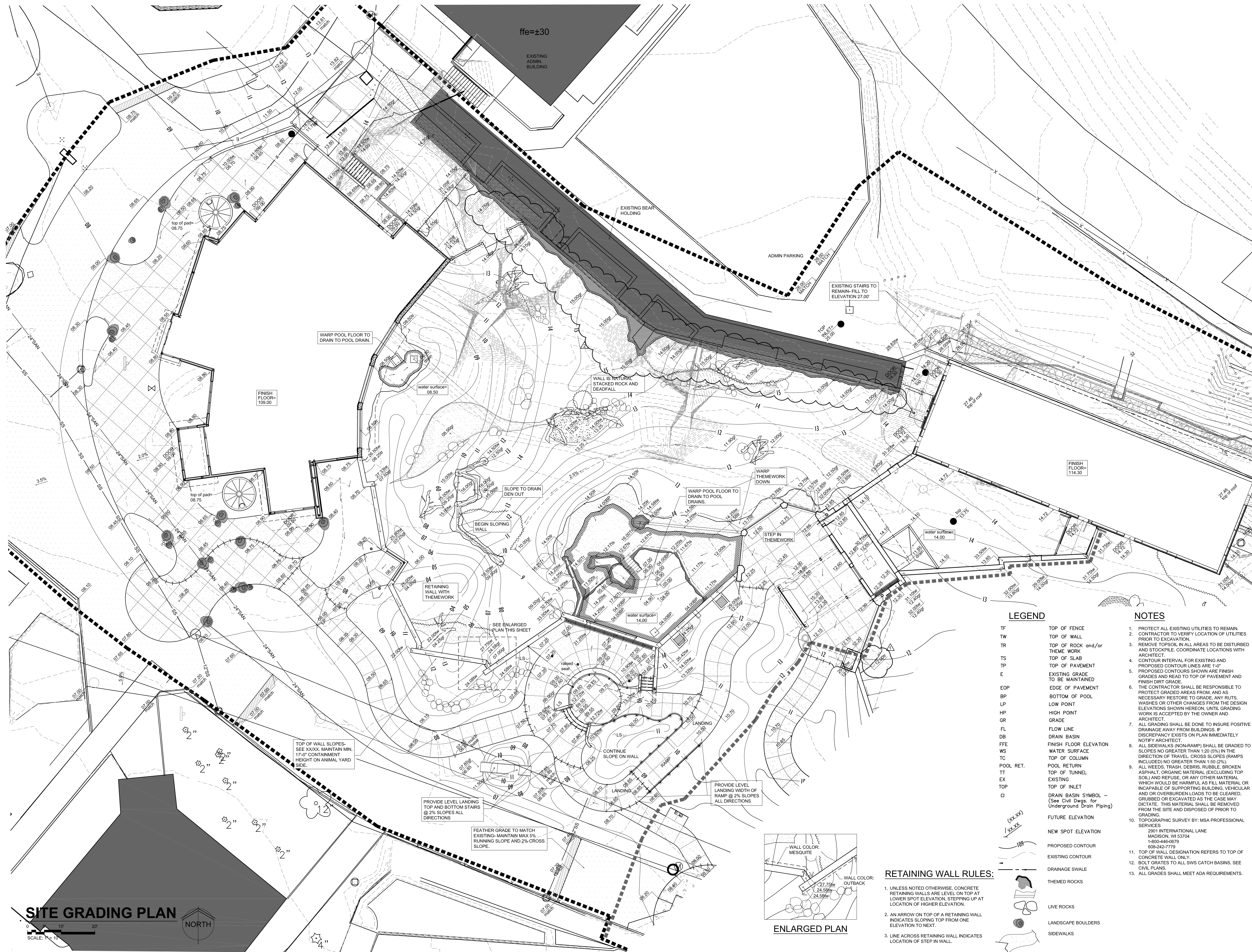
- Foundation lines at the pool depth change should be flipped to opposite side of the pool wall to match detail 8/S7.4

7. Sheet SR1.4- Seal Pool Wall Plan

- Foundation lines at the pool depth change should be flipped to opposite side of the pool wall to match detail 8/S7.4

Enclosures:

Sheets: LS1.0, YA1.0, A1.4, A5.6 & SG1.1, ST1.1, ST1.2
(all 30"x42" sheets - dated 11.27.2013)



wdm
ARCHITECTS
WDM Architects P.A.
105 North Washington
Wichita, KS 67202-2815
T 316.262.4700
F 316.262.0002
wdmarchitects.com

we do more
henry vilas
700

ARCTIC ANIMAL EXHIBIT AND CONCESSIONS
RFB No. 313086
Henry Vilas Zoo - County of Dane
Department of Public Works
1919 Alliant Energy Center Way
Madison, Wisconsin

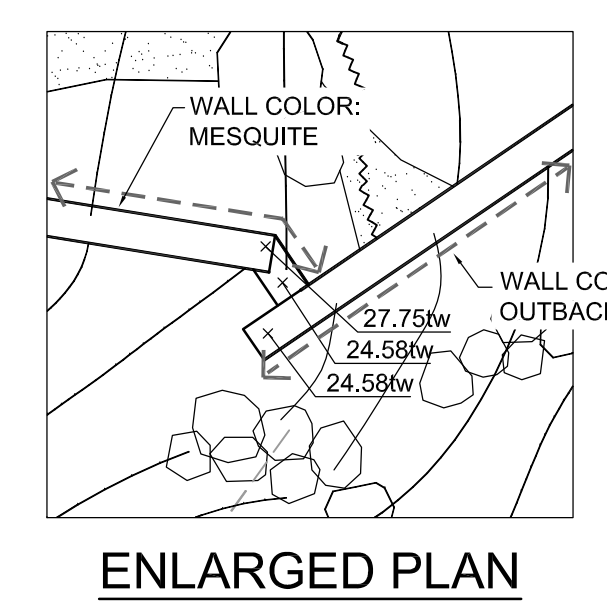
PRINTS ISSUED
07.26.2013 - Schematic Design
08.23.2013 - Design Development
09.23.2013 - 65% CD's
10.07.2013 - Pricing Set
10.21.2013 - 95% CD's
11.13.2013 - Bid Documents
11.25.2013 - Addendum #3
11.27.2013 - Addendum #4

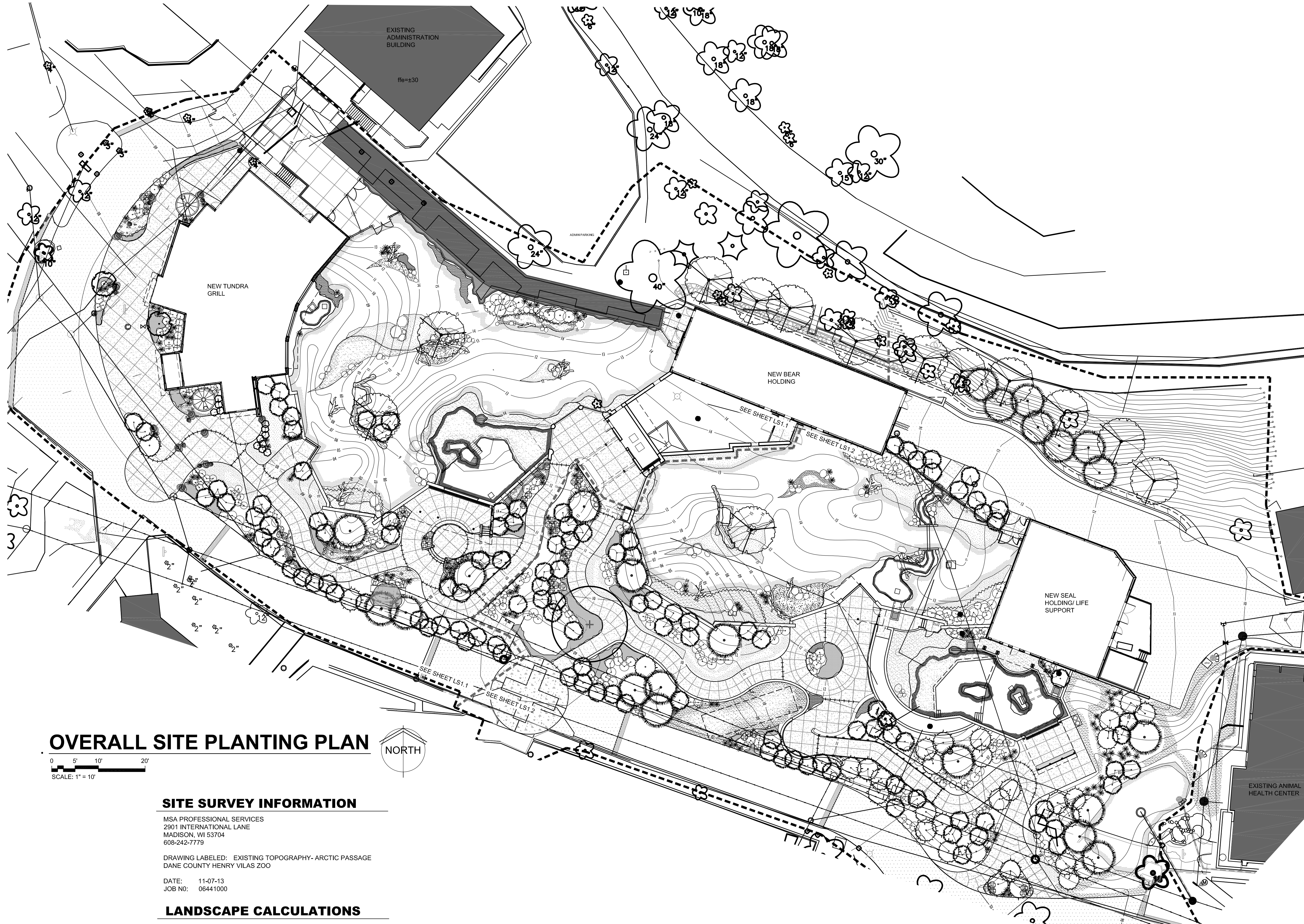
WDM No. drawn: NS
13046 checked: SR
SITE GRADING PLAN

SG1.1
11/27/2013 10:28:09 AM
WDM Architects P.A.

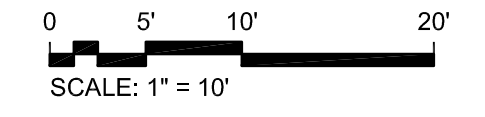
- LEGEND**
- TF TOP OF FENCE
 - TW TOP OF WALL
 - TR TOP OF ROCK and/or THEM WORK
 - TS TOP OF SLAB
 - TP TOP OF PAVEMENT
 - E EXISTING GRADE TO BE MAINTAINED
 - EOP EDGE OF PAVEMENT
 - BP BOTTOM OF POOL
 - LP LOW POINT
 - HP HIGH POINT
 - GR GRADE
 - FL FLOW LINE
 - DB DRAIN BASIN
 - FFE FINISH FLOOR ELEVATION
 - WS WATER SURFACE
 - TC TOP OF COLUMN
 - POOL RET. POOL RETURN
 - TT TOP OF TUNNEL
 - EX EXISTING
 - TOP TOP OF INLET
 - DRAIN BASIN SYMBOL - (See Civil Dwg. for Underground Drain Piping)
 - FUTURE ELEVATION
 - NEW SPOT ELEVATION
 - PROPOSED CONTOUR
 - EXISTING CONTOUR
 - DRAINAGE SWALE
 - THEMED ROCKS
 - LIVE ROCKS
 - LANDSCAPE BOULDERS
 - SIDEWALKS
- RETAINING WALL RULES:**
1. UNLESS NOTED OTHERWISE, CONCRETE RETAINING WALLS ARE LEVEL ON TOP AT LOWER SPOT ELEVATION, STEPPING UP AT LOCATION OF HIGHER ELEVATION.
 2. AN ARROW ON TOP OF A RETAINING WALL INDICATES SLOPING TOP FROM ONE ELEVATION TO NEXT.
 3. LINE ACROSS RETAINING WALL INDICATES LOCATION OF STEP IN WALL.

- NOTES**
1. PROTECT ALL EXISTING UTILITIES TO REMAIN.
 2. CONTRACTOR TO VERIFY LOCATION OF UTILITIES PRIOR TO EXCAVATION.
 3. REMOVE TOPSOIL IN ALL AREAS TO BE DISTURBED AND STOCKPILE. COORDINATE LOCATIONS WITH ARCHITECT.
 4. CONTOUR INTERVAL FOR EXISTING AND PROPOSED CONTOUR LINES ARE 1'-0" TO BE MAINTAINED.
 5. PROPOSED CONTOUR LINES ARE FINISH GRADES AND READ TO TOP OF PAVEMENT AND FINISH DIRT GRADE.
 6. THE CONTRACTOR SHALL BE RESPONSIBLE TO PROTECT GRADED AREAS FROM, AND AS NECESSARY RESTORE TO GRADE, ANY RUTS, WASHES OR OTHER CHANGES FROM THE DESIGN ELEVATIONS SHOWN HEREON, UNTIL GRADING WORK IS ACCEPTED BY THE OWNER AND ARCHITECT.
 7. ALL GRADING SHALL BE DONE TO INSURE POSITIVE DRAINAGE AWAY FROM BUILDINGS. IF DISCREPANCY EXISTS ON PLAN IMMEDIATELY NOTIFY ARCHITECT.
 8. ALL SIDEWALKS (NON-RAMP) SHALL BE GRADED TO SLOPES NO GREATER THAN 1:20 (5%) IN THE DIRECTION OF TRAVEL. CROSS SLOPES (RAMPS INCLUDED) NO GREATER THAN 1:50 (2%).
 9. ALL WEEDS, TRASH, DEBRIS, RUBBLE, BROKEN ASPHALT, ORGANIC MATERIAL (EXCLUDING TOP SOIL) AND REFUSE, OR ANY OTHER MATERIAL WHICH WOULD BE HARMFUL AS FILL MATERIAL OR INCAPABLE OF SUPPORTING BUILDING, VEHICULAR AND/OR OVERBURDEN LOADS TO BE REMOVED, GRUBBED OR EXCAVATED AS THE CASE MAY DICTATE. THIS MATERIAL SHALL BE CLEARED FROM THE SITE AND DISPOSED OF PRIOR TO GRADING.
 10. TOPOGRAPHIC SURVEY BY: MSA PROFESSIONAL SERVICES
2901 INTERNATIONAL LANE
MADISON, WI 53704
1-800-446-0679
608-242-7778
 11. TOP OF WALL DESIGNATION REFERS TO TOP OF CONCRETE WALL ONLY.
 12. BOLT GRATES TO ALL SWS CATCH BASINS. SEE CIVIL PLANS.
 13. ALL GRADES SHALL MEET ADA REQUIREMENTS.





OVERALL SITE PLANTING PLAN



SITE SURVEY INFORMATION

M&A PROFESSIONAL SERVICES
2901 INTERNATIONAL LANE
MADISON, WI 53704
608-242-7779

DRAWING LABELED: EXISTING TOPOGRAPHY- ARCTIC PASSAGE
DANE COUNTY HENRY VILAS ZOO

DATE: 11-07-13
JOB NO: 06441000

LANDSCAPE CALCULATIONS

(a) One (1) landscape unit shall be provided for each three hundred (300) square feet of developed area, with the exception of the IL and the IG districts as specified in (b) below.

Total square footage of developed area= 117,557sf
Developed area divided by three hundred (300) square feet= 392 Landscape Units

(c) One landscape unit consists of five (5) landscape points. Landscape points are calculated as shown in the following table.

Landscape units multiplied by five (5) landscape points = 1960 Total Points Required

PLANT TYPE/ELEMENT	MINIMUM SIZE AT INSTALLATION	POINTS	CREDITS/ EXISTING LANDSCAPING		NEW PROPOSED LANDSCAPING	
			QUANTITY	POINTS ACHIEVED	QUANTITY	POINTS ACHIEVED
OVERSTORY DECIDUOUS TREE	2 1/2" CALIPER	35	2	70	14	490
ORNAMENTAL TREE	1 1/2" CALIPER	15			2	30
EVERGREEN TREE	3 FEET TALL	15			207	3105
SHRUB, DECIDUOUS	18" OR 3 GALLON CONTAINER SIZE	2			235	470
SHRUB, EVERGREEN	18" OR 3 GALLON CONTAINER SIZE	3			47	141
ORNAMENTAL GRASSES	18" OR 3 GALLON CONTAINER SIZE	2			126	252
ORNAMENTAL/DECORATIVE FENCING OR WALL	N/A	4 PER 10 LINEAL FT.			--	--
SUB TOTALS				70		4488

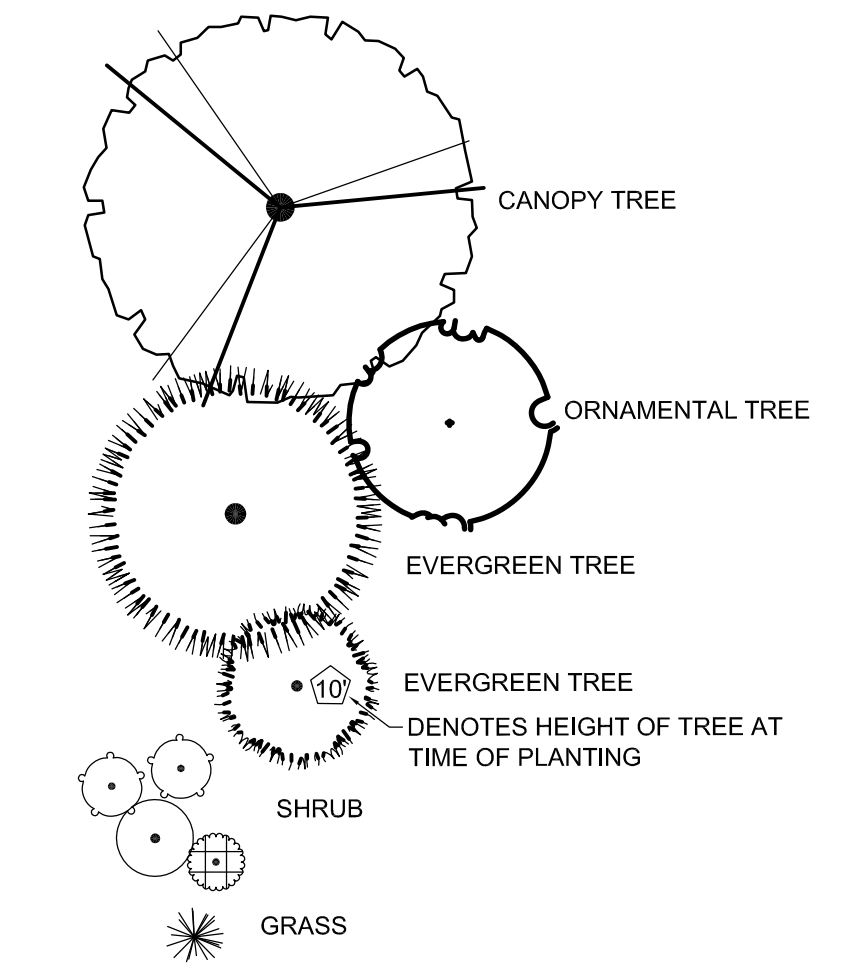
TOTAL NUMBER OF POINTS PROVIDED 4558

NOTE:
BASE BID TO INCLUDE ROCK SALVAGED AND REUSED FROM SITE. SEE BID FORM FOR UNIT PRICE TO ADD ADDITIONAL LIVE ROCK. CONTRACTOR TO MATCH AS CLOSELY AS POSSIBLE ROCK BROUGHT IN FROM OFF SITE TO ROCK SALVAGED FROM SITE.

GENERAL PLANTING NOTES

- PRIOR TO BEGINNING ANY WORK ON THE SITE, THE CONTRACTOR SHALL CONTACT THE "PUBLIC WORKS PROJECT ENGINEER" AND THE ARCHITECT FOR SPECIFIC INSTRUCTIONS FOR SEQUENCING OF WORK. REPORT ANY ISSUES IN SITE CONDITIONS AND CONSTRUCTION THAT MAY AFFECT THE PLANTING LAYOUT TO THE PROJECT ARCHITECT PRIOR TO STARTING CONSTRUCTION.
- LANDSCAPE CONTRACTOR SHALL PROVIDE ALL LABOR, MATERIALS AND SERVICE NECESSARY TO FURNISH AND INSTALL PLANTINGS AS SPECIFIED HEREIN AND AS SHOWN ON THESE PLANS.
- NO MATERIAL SUBSTITUTIONS SHALL BE MADE WITHOUT LANDSCAPE ARCHITECT'S APPROVAL. ALTERNATIVE MATERIALS OF SIMILAR SIZE AND CHARACTER MAY BE CONSIDERED IF SPECIFIED PLANT MATERIALS CANNOT BE OBTAINED. LANDSCAPE ARCHITECT RESERVES THE RIGHT TO REVISE PLANT LIST AS DEEMED NECESSARY. DEVIATION FROM PLANT LIST COULD AFFECT THE HEALTH OF THE ANIMALS.
- LANDSCAPE CONTRACTOR IS TO STAKE ALL PLANT MATERIAL (TREE AND SHRUB) LOCATIONS AS WELL AS PLANTER BED EDGER LOCATIONS PRIOR TO INSTALLATION. CONTRACTOR IS TO CONTACT PROJECT ARCHITECT FOR PRE-INSTALLATION CONFERENCE AND FINAL APPROVAL OF STAKING. ADJUST PLANT LOCATIONS ONLY AS NECESSARY TO AVOID SITE CONFLICTS.
- UTILITIES HAVE BEEN SHOWN ON THE PLAN FOR ROUGH LOCATION OF SERVICES. CONTRACTOR SHALL LOCATE ALL UTILITIES BEFORE WORK. LOCATE EXACT UTILITY LOCATIONS BY CONTACTING UTILITY LOCATOR SERVICES. CONTRACTOR WILL BE RESPONSIBLE FOR THE REPAIR OF ANY DAMAGE HE MAY CAUSE TO UTILITIES.
- PROTECT AND SAVE THE EXISTING PLANT MATERIALS SHOWN ON PLANS UNLESS NOTED TO BE REMOVED.
- GENERAL CONTRACTOR SHALL PROVIDE 4" OF TOPSOIL AT ALL SOD, SEED AND PLANTING AREAS. GRADE SHALL BE ADJUSTED FOR SOD THICKNESS. ANY BERMS SHOWN ON PLANS ARE REFLECTED ON GRADING PLAN. FINISH GRADING SHALL BE PERFORMED LANDSCAPE CONTRACTOR.
- WHEN CLAY SOIL IS ENCOUNTERED IN THE ESTABLISHMENT OF THE LAWN OR THE INSTALLATION OF THE PLANT MATERIAL IT SHALL BE IMPROVED IN ACCORDANCE WITH STANDARD TRADE PRACTICE.
- NO IRRIGATION SYSTEM WILL BE INSTALLED. CONTRACTOR TO WATER AND MAINTAIN PLANTS FOR 90 DAYS AFTER SUBSTANTIAL COMPLETION. CONTRACTOR SHALL SUPPLY ENOUGH WATER TO MAINTAIN PLANTS IN A HEALTHY CONDITION.
- SOD TYPE SHALL BE LOCALLY AVAILABLE HARDY BLENDED VARIETIES SHOWN ON PLANT SCHEDULE. SEED TYPE SHALL BE LOCALLY AVAILABLE AS WELL.
- BACKFILL FOR PLANT EXCAVATIONS TO BE CLEAN NATURAL SOIL, EXCAVATED FROM PLANTING PITS MIXED WITH COMPOST AND WELL-ROTTED MANURE AT A RATIO OF THREE (3) PARTS SOIL TO ONE (1) PART COMPOST AND WELL-ROTTED MANURE.
- FERTILIZE ALL PLANTS WITH MILORGANITE FERTILIZER AS DIRECTED BY INSTRUCTIONS ON FERTILIZER.
- CULTIVATE GROUND COVER PLANTING BEDS TO DEPTH OF 8". TILL COMPOST AND WELL-ROTTED MANURE INTO THE PLANTING BED AT THE APPROXIMATE RATIO OF ONE (1) PART COMPOST/MANURE TO THREE (3) PARTS SOIL.
- ALL PLANT MATERIALS SHALL BE PROTECTED FROM THE DRYING ACTION OF THE SUN AND WIND AFTER BEING DUG, WHILE BEING TRANSPORTED, AND WHILE AWAITING PLANTING. BALLS OF PLANTS WHICH CANNOT BE PLANTED IMMEDIATELY SHALL BE PROTECTED FROM DRYING ACTION BY COVERING THEM WITH MOIST MULCH. PERIODICALLY, APPLY WATER TO MULCH-COVERED BALLS TO KEEP MOIST. IF PLANTING SHOULD OCCUR DURING GROWING SEASON, APPLY ANTI-DESSICANT TO LEAVES BEFORE TRANSPORT TO REDUCE LIKELIHOOD OF WINDBURN. REAPPLY ANTI-DESSICANT AFTER PLANTING TO REDUCE TRANSPIRATION.
- ALL PLANT MATERIALS SHALL HAVE BACKFILL CAREFULLY PLACED AROUND BASE AND SIDES OF BALL TO TWO-THIRDS (2/3) DEPTH OF BALL, THEN THOROUGHLY SOAKED WITH WATER TO ALLOW SETTLEMENT. ALL WIRE, BURLAP FASTENERS AND LOOSE BURLAP AROUND BASE OF TRUNK SHALL BE REMOVED. REMAINDER OF PIT SHALL THEN BE BACKFILLED, ALLOWING FOR DEPTH OF MULCH, SAUCER AND SETTLEMENT OF BACKFILL. BACKFILL SHALL THEN BE THOROUGHLY WATERED ONCE AGAIN.
- AFTER PLANTING IS COMPLETED, REPAIR INJURIES TO ALL PLANTS AS REQUIRED. LIMIT AMOUNT OF PRUNING TO A MINIMUM NECESSARY TO REMOVE DEAD OR INJURED TWIGS AND BRANCHES. PRUNE IN SUCH A MANNER AS NOT TO CHANGE NATURAL HABIT OR SHAPE OF PLANT. MAKE CUTS FLUSH, LEAVING NO STUBS. CUTS OF ONE INCH (1") OR MORE TO BE PAINTED WITH TREE PAINT. CENTRAL LEADERS SHALL NOT BE REMOVED.
- PLANT GROUND COVER/ANNUALS WITHIN ONE FOOT (1') OF TRUNK OF TREES OR SHRUBS PLANTED WITHIN AREA. PLANTING ARRANGEMENT SHALL BE TRIANGULAR, WITH PROPER ON-CENTER SPACING BETWEEN PLANTS.
- PLANTING BEDS ARE TO BE FREE OF WEEDS AND GRASS. TREAT PLANTING BEDS NOT CONTAINING PERENNIALS/WILDFLOWERS WITH A PRE-EMERGENT HERBICIDE PRIOR TO PLANTING AND MULCH PLACEMENT. APPLY IN ACCORDANCE WITH STANDARD TRADE PRACTICE.
- USE BARK CHIP OR PINE NUGGETS IN ALL SHRUB PLANTING BEDS AND PINE NEEDLE MULCH UNDER ALL EVERGREEN TREES. LANDSCAPE CONTRACTOR SHALL SUBMIT A SAMPLE OF MULCH FOR APPROVAL PRIOR TO STARTING CONSTRUCTION. SIZE OF MATERIAL TO RANGE FROM 1/2" ONLY. PLACE 3"-4" OF MULCH IN ALL SHRUB BEDS. PLACE 1" OF MULCH IN GROUND COVER BEDS. PLACE 4" OF MULCH IN ALL TREE SAUCERS.
- BOULDERS SHOWN ON THE PLANS ARE TO BE SALVAGED FROM SITE, AND IF NOT AVAILABLE, OF A MATERIAL INDIGENOUS TO REGION. REFER TO BOULDER SCHEDULE FOR SIZE OF BOULDERS. PROJECT ARCHITECT SHALL APPROVE SELECTION AND PLACEMENT OF BOULDERS ON SITE.
- REMOVE ALL RUBBISH, EQUIPMENT AND MATERIAL AND LEAVE THE AREA IN A NEAT, CLEAN CONDITION EACH DAY. MAINTAIN PAVED AREAS UTILIZED FOR HAULING EQUIPMENT AND MATERIALS BY OTHER TRADES IN A CLEAN AND UNOBSTRUCTED CONDITION AT ALL TIMES. REMOVE SOIL OR DIRT THAT ACCUMULATED DURING OR AS A RESULT OF PLANTING OPERATIONS EACH DAY AND, AT THE COMPLETION OF PLANTING OPERATIONS.
- ALL PLANTS SHALL BE INSPECTED BY THE OWNER AND PROJECT ARCHITECT AT SUBSTANTIAL COMPLETION. CONTRACTOR SHALL REPLACE IMMEDIATELY ANY PLANTS NOT IN HEALTHY AND VIGOROUS CONDITION AT THAT TIME AT NO EXPENSE TO THE OWNER.
- ANY VEGETATED AREA DISTURBED BY THE CONSTRUCTION PROCESS MUST BE RESTORED BY REPAIRING THE SOIL BED AND REESTABLISHING ORIGINAL PLANTINGS.
- LANDSCAPE CONTRACTOR IS TO REMOVE TREE STAKES AND ALL DEAD WOOD ON TREES ONE YEAR AFTER PROVISIONAL/FINAL ACCEPTANCE.
- CONTRACTOR TO PROVIDE CARE AND MAINTENANCE INSTRUCTIONS TO OWNER IN BOTH WRITTEN AND BOUND FORMAT FOR ALL PLANT MATERIALS.
- IN ALL PLANTING BEDS- ADD GOOD QUALITY ORGANIC MATTER AT THE RATE OF 3 TO 6 CUBIC YARDS PER 1,000 SQUARE FOOT AREA, AND THOROUGHLY MIX WITH THE EXISTING SOIL TO A DEPTH OF 6 INCHES.

LEGEND



BOULDER SCHEDULE

SYMBOL	AVG. SIZE (DIA.)
B-1	48"
B-2	36"-48"
B-3	24"-36"

BOULDERS AS SELECTED BY OWNER/ LANDSCAPE ARCHITECT AND SALVAGED FROM SITE

ALL LIVE ROCK WITHIN ANIMAL EXHIBITS SHALL BE AT A MINIMUM- 15CUFT OR 2,000LBS. WITH A GENERALLY FLAT/ ANGULAR BASE (NOT ROLLABLE). APPROX SIZES RANGE FROM 48"x36"x15" or 30"x30"x30".



WDM Architects P.A.
105 North Washington
Wichita, KS 67202-2815
T 316.262.4700
F 316.262.0002
wdmarchitects.com



ARCTIC ANIMAL EXHIBIT AND CONCESSIONS
RFB No. 313086
Henry Vilas Zoo - County of Dane
Department of Public Works
Henry Vilas Zoo
702 S Randall Ave
Madison, Wisconsin

PRINTS ISSUED
07.26.2013 - Schematic Design
08.23.2013 - Design Development
09.23.2013 - 65% CD's
10.07.2013 - Pricing Set
10.21.2013 - 95% CD's
11.13.2013 - Bid Documents
11.25.2013 - Addendum #3
11.27.2013 - Addendum #4

WDM No. 13046 drawn: NS
checked: SR

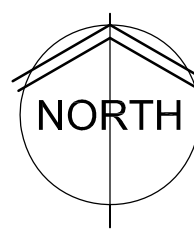
OVERALL SITE PLANTING PLAN

LS1.0



SITE THEMEWORK PLAN

0 5' 10' 20'
SCALE: 1" = 10'



THEMEWORK LEGEND

- POOL EDGING
- THEMEWORK ISLANDS IN POOLS/ CRAWL TUNNEL
- LOW PROFILE THEMEWORK AT BACK WALL
- DEEP REVEAL THEMEWORK AT BACK WALL (SINGLE FORMATION ONLY)
- POLAR BEAR POOL ENTRY/ PAVING AT GLASS

REFERENCE THEMEWORK IMAGES ON SHEET ST3.0 FOR GENERAL DESIGN INTENT.



WDM Architects P.A.
105 North Washington
Wichita, KS 67202-2815
T 316.262.4700
F 316.262.0002
wdmarchitects.com

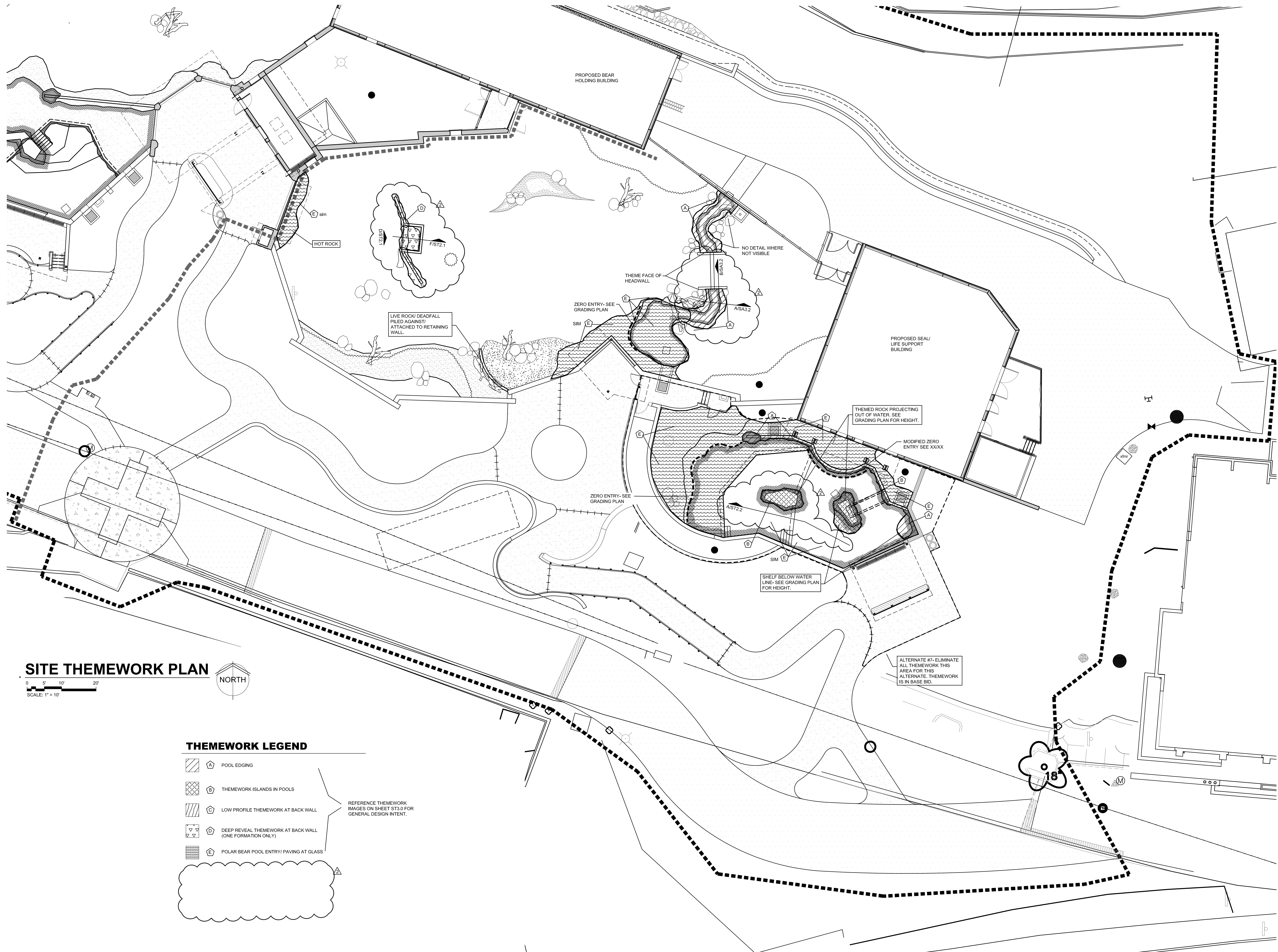


ARCTIC ANIMAL EXHIBIT AND CONCESSIONS
RFB No. 313086
Henry Vilas Zoo - County of Dane
Henry Vilas Zoo - Department of Public Works
702 S Randall Ave
1919 Alliant Energy Center Way
Madison, Wisconsin

PRINTS ISSUED
07.26.2013 - Schematic Design
08.23.2013 - Design Development
09.23.2013 - 65% CD's
10.07.2013 - Pricing Set
10.21.2013 - 95% CD's
11.13.2013 - Bid Documents
11.25.2013 - Addendum #3
11.27.2013 - Addendum #4

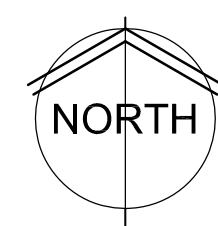
WDM No. 13046 drawn: NS
checked: SR
SITE THEMEWORK PLAN

ST1.1



SITE THEMWORK PLAN

0 5' 10' 20'
SCALE: 1" = 10'



THEMWORK LEGEND

- POOL EDGING
- THEMWORK ISLANDS IN POOLS
- LOW PROFILE THEMWORK AT BACK WALL
- DEEP REVEAL THEMWORK AT BACK WALL (ONE FORMATION ONLY)
- POLAR BEAR POOL ENTRY PAVING AT GLASS

REFERENCE THEMWORK IMAGES ON SHEET ST3.0 FOR GENERAL DESIGN INTENT.

wdm
ARCHITECTS
WDM Architects P.A.
105 North Washington
Wichita, KS 67202-2815
T 316.262.4700
F 316.262.0002
wdmarchitects.com

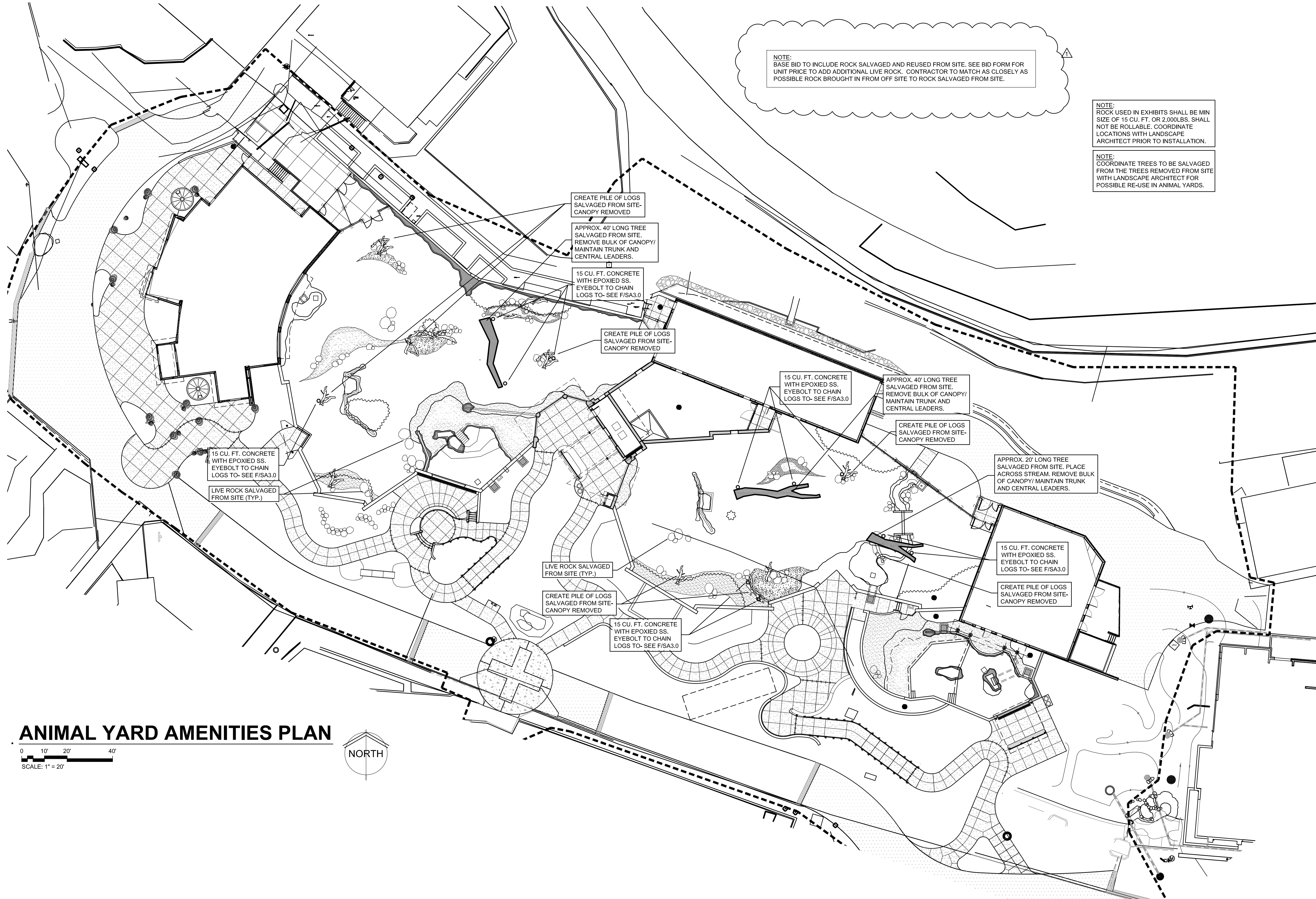
we do more
henry vilas
700

ARCTIC ANIMAL EXHIBIT AND CONCESSIONS
RFB No. 313086
Henry Vilas Zoo - County of Dane
Henry Vilas Zoo
702 S Randall Ave
Madison, Wisconsin
Department of Public Works
1919 Alliant Energy Center Way
Madison, Wisconsin

PRINTS ISSUED
07.26.2013 - Schematic Design
08.23.2013 - Design Development
09.23.2013 - 65% CD's
10.07.2013 - Pricing Set
10.21.2013 - 95% CD's
11.13.2013 - Bid Documents
11.25.2013 - Addendum #3
11.27.2013 - Addendum #4

WDM No. 13046 drawn: NS
checked: SR
SITE THEMWORK PLAN

ST1.2



ANIMAL YARD AMENITIES PLAN

0 10' 20' 40'
SCALE: 1" = 20'



wdm
ARCHITECTS
WDM Architects P.A.
105 North Washington
Wichita, KS 67202-2815
T 316.262.4700
F 316.262.0002
wdmarchitects.com

we do more
henry vilas
1919

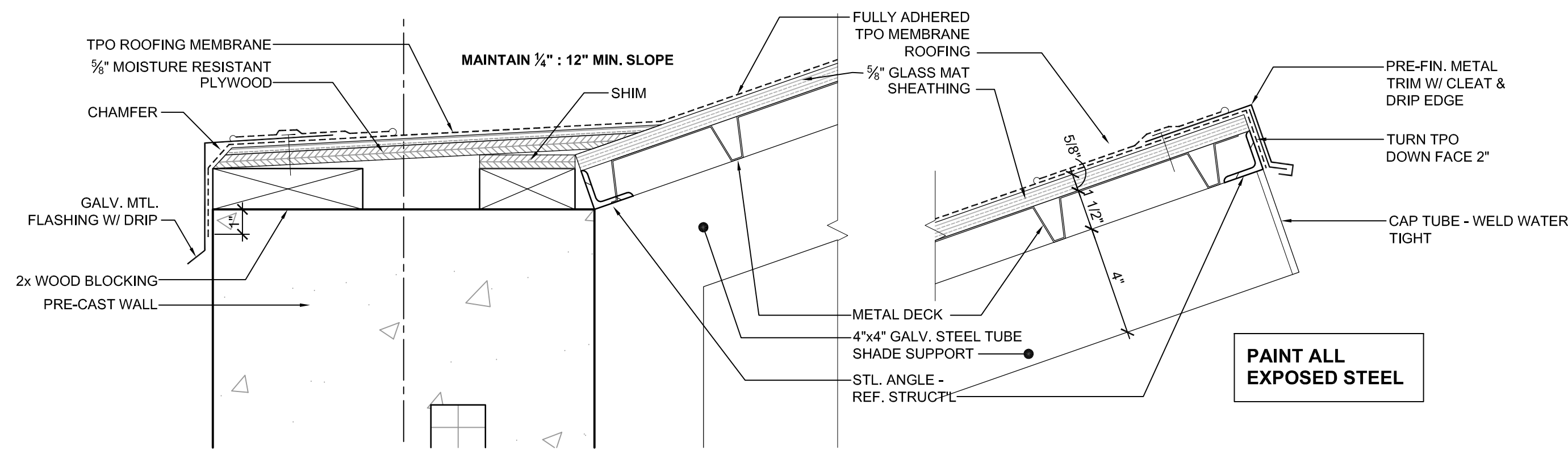
ARCTIC ANIMAL EXHIBIT AND CONCESSIONS
RFB No. 313086
Henry Vilas Zoo - County of Dane
Henry Vilas Zoo - Department of Public Works
702 S Randall Ave 1919 Alliant Energy Center Way
Madison, Wisconsin Madison, Wisconsin

PRINTS ISSUED
07.26.2013 - Schematic Design
08.23.2013 - Design Development
09.23.2013 - 65% CD's
10.07.2013 - Pricing Set
10.21.2013 - 95% CD's
11.13.2013 - Bid Documents
11.25.2013 - Addendum #3
11.27.2013 - Addendum #4

WDM No. 13046 drawn: NS
checked: SR
YARD AMENITIES PLAN

YA1.0

11/27/2013 12:07 PM
copyright 2013 WDM Architects P.A.

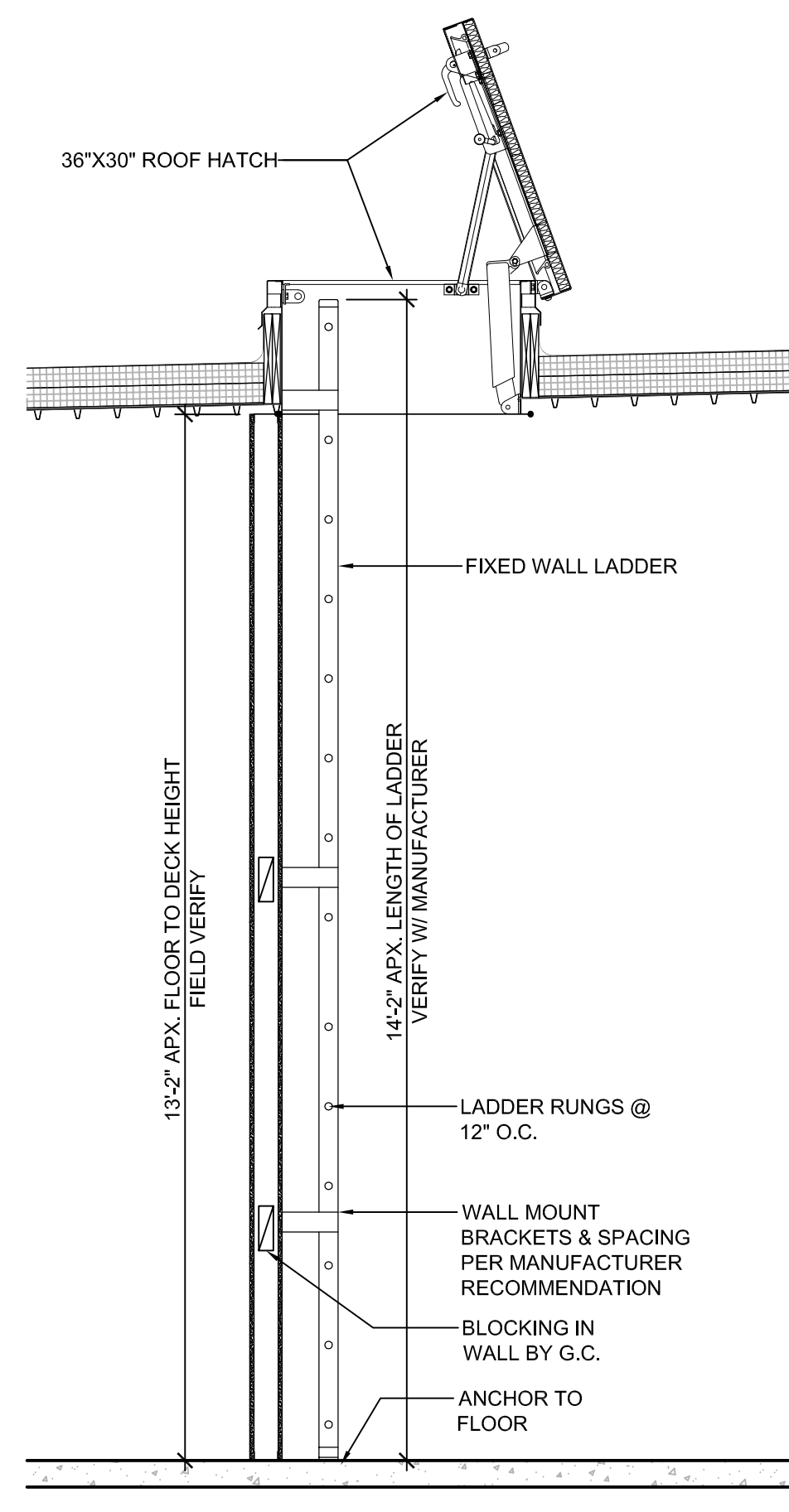


1 SUN SHADE DETAIL

SCALE: 3" = 1'-0"

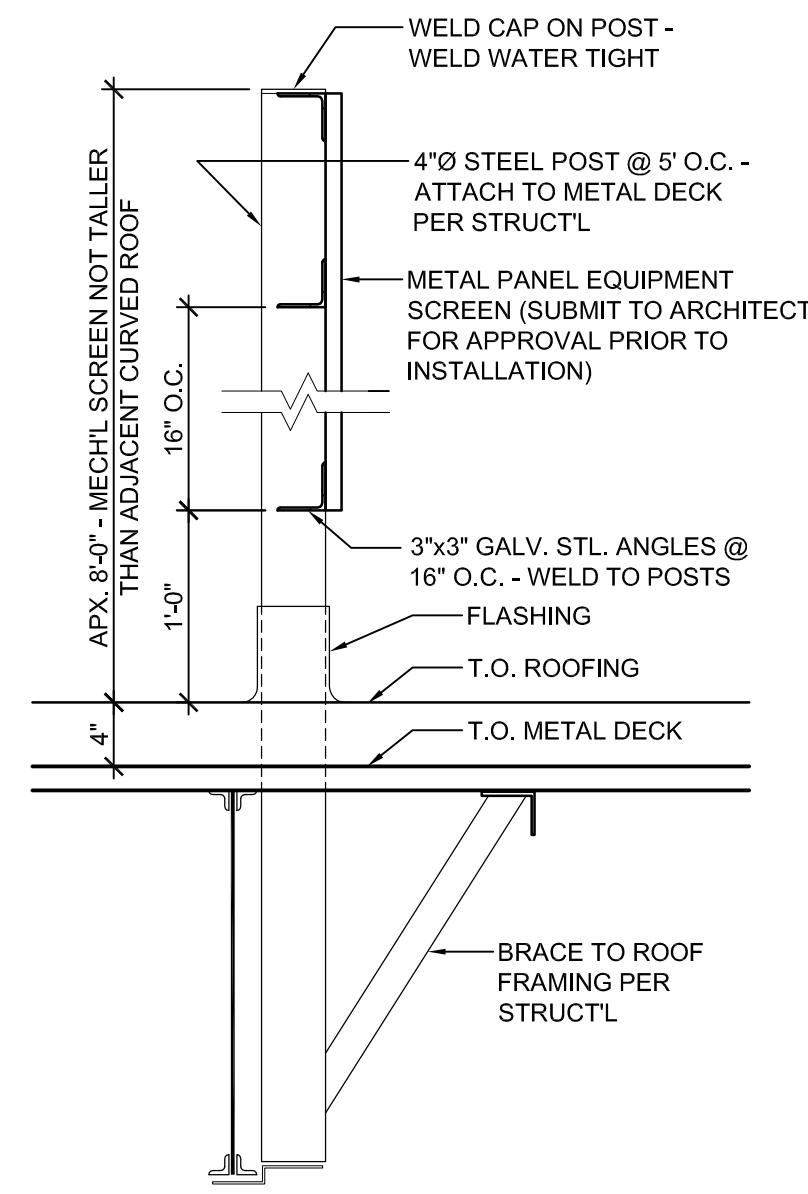
2 NOT USED

SCALE: 3" = 1'-0"



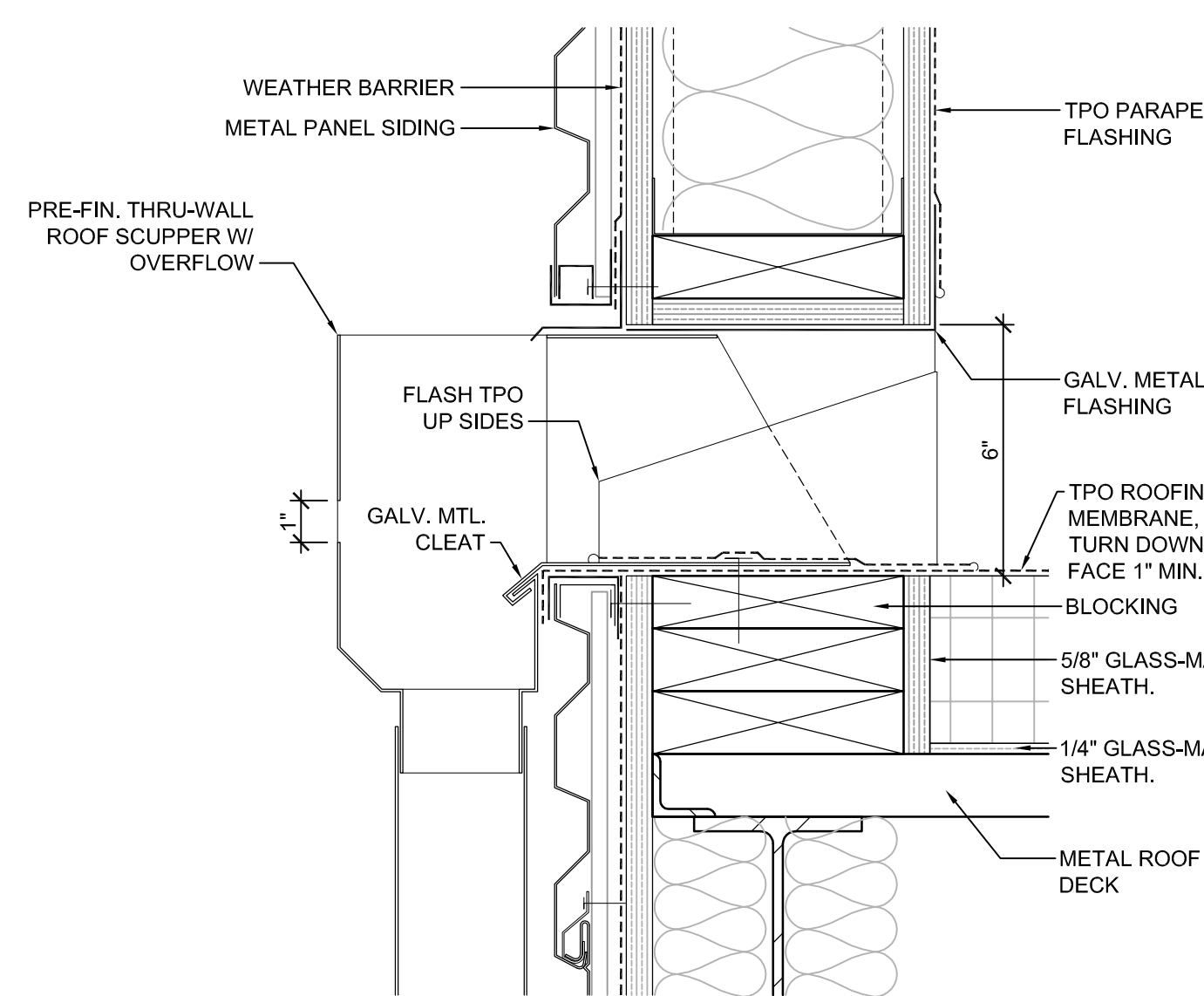
3 ROOF ACCESS LADDER

SCALE: 1/2" = 1'-0"



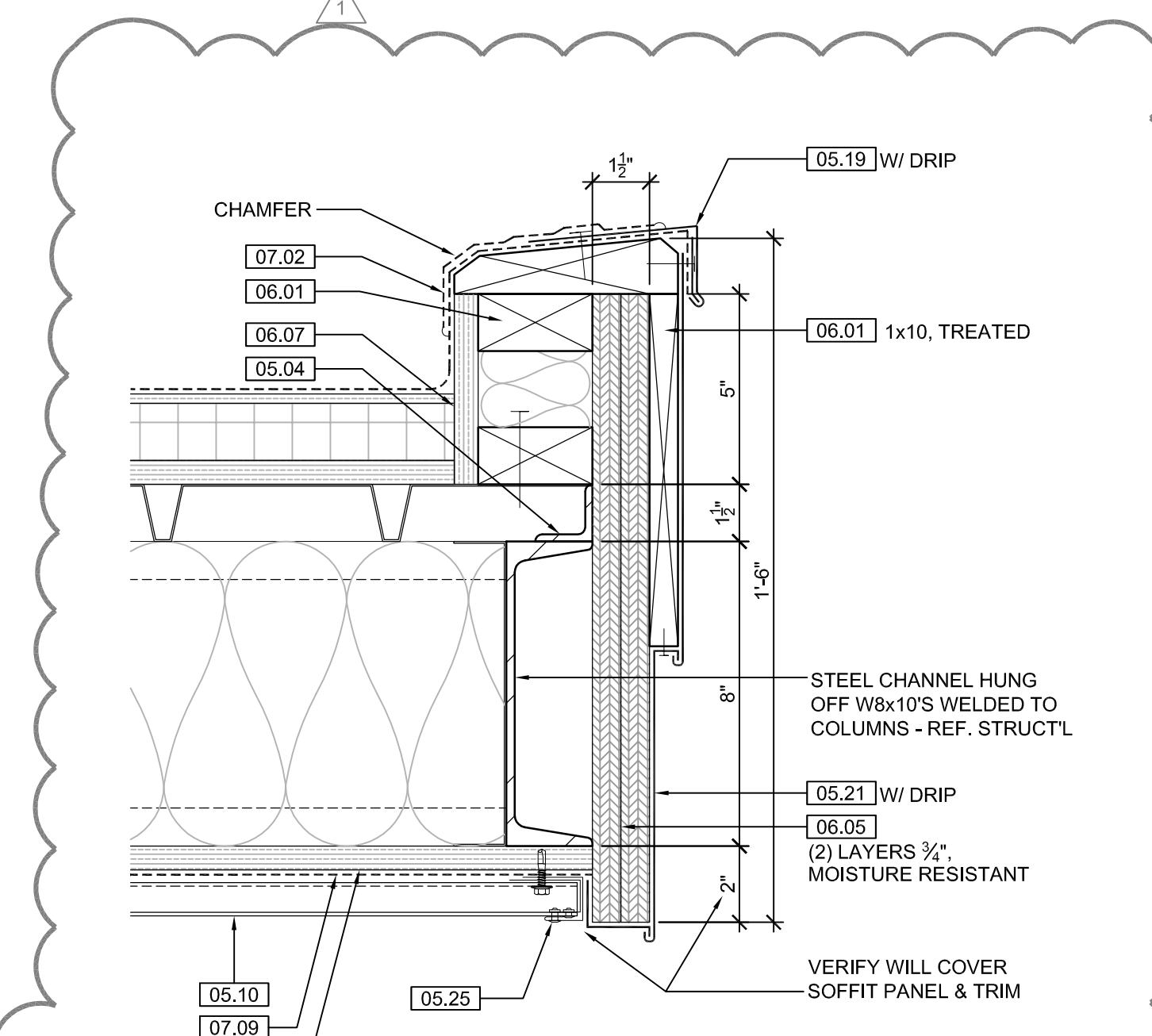
4 EQUIP. SCREEN DTL.

SCALE: 1" = 1'-0"



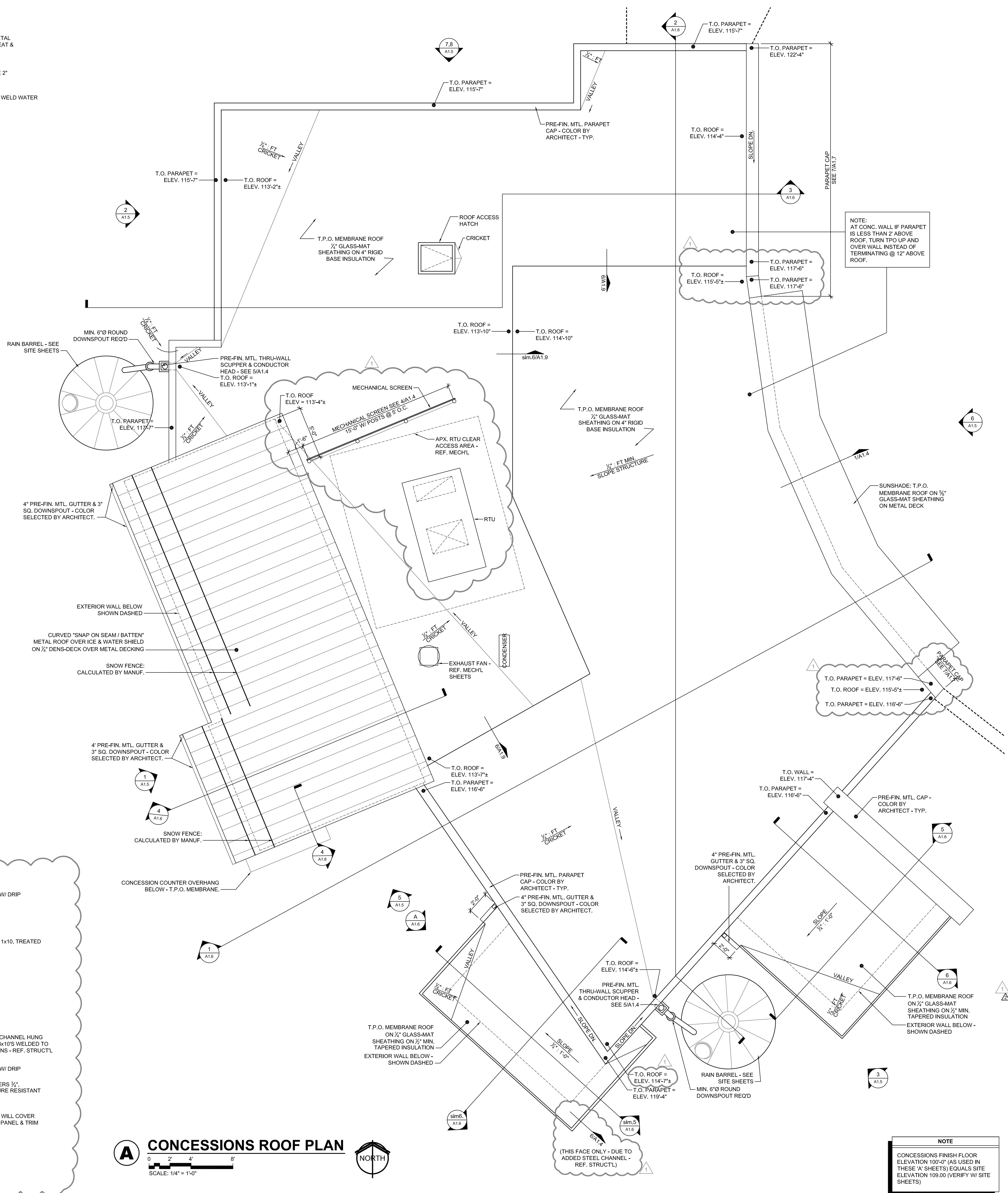
5 ROOF SCUPPER DTL.

SCALE: 3" = 1'-0"



6 ROOF EAVE DTL.

SCALE: 3" = 1'-0"



A CONCESSIONS ROOF PLAN

SCALE: 1/4" = 1'-0"



NOTE
CONCESSIONS FINISH FLOOR ELEVATION 100'-0" (AS USED IN THESE 'A' SHEETS) EQUALS SITE ELEVATION 109.00 (VERIFY W/ SITE SHEETS)



WDM Architects P.A.
105 North Washington
Wichita, KS 67202-2815
T 316.262.4700
F 316.262.0002
wdmarchitects.com



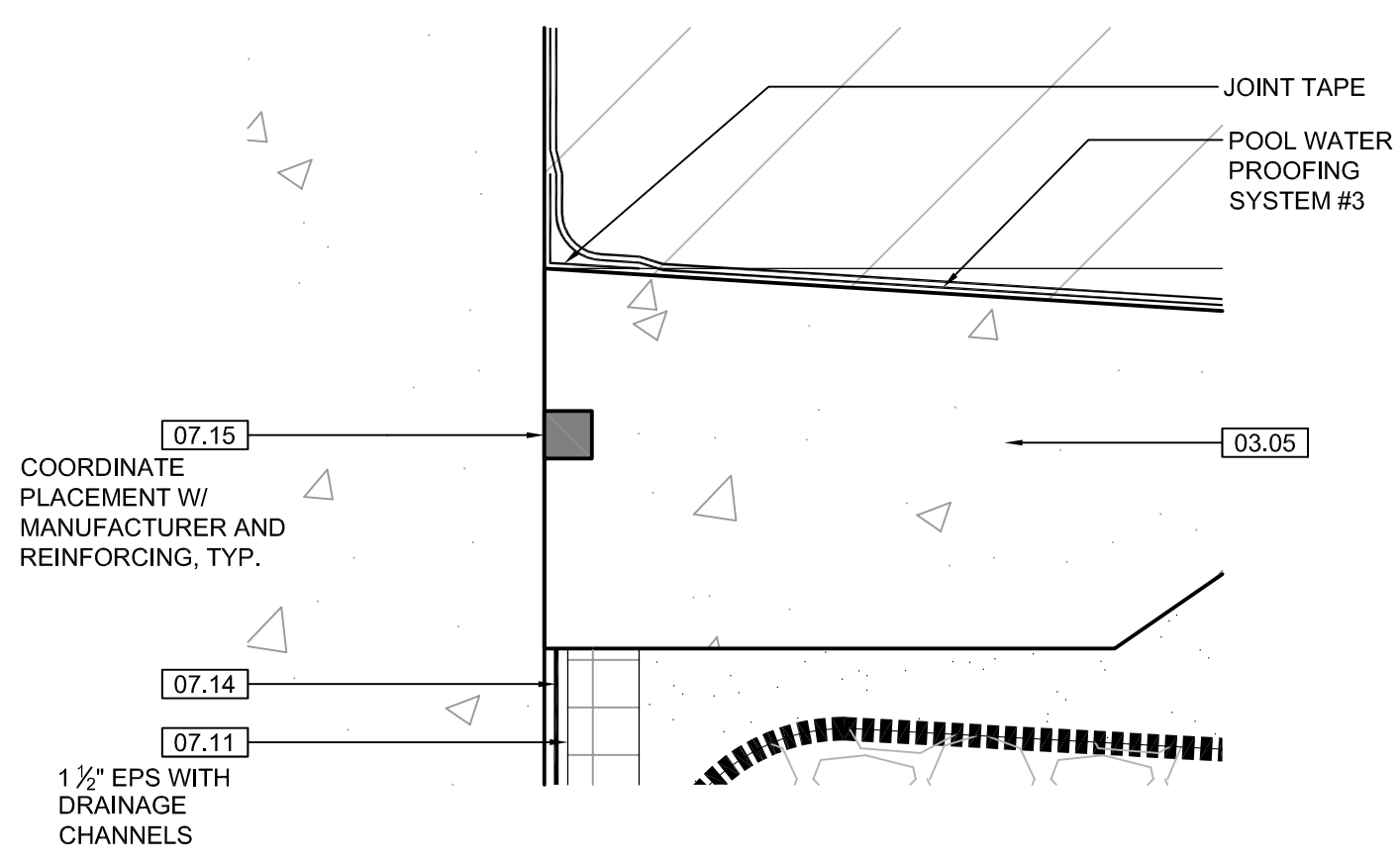
ARCTIC ANIMAL EXHIBIT AND CONCESSIONS
RFB No. 313086
Henry Vilas Zoo - County of Dane
Department of Public Works
Henry Vilas Zoo
702 S Randall Ave
Madison, Wisconsin
1919 Alliant Energy Center Way
Madison, Wisconsin

PRINTS ISSUED
07.26.2013 - Schematic Design
08.23.2013 - Design Development
09.23.2013 - 65% CD's
10.07.2013 - Pricing Set
10.21.2013 - 95% CD's
11.13.2013 - Bid Documents
11.25.2013 - Addendum #3
11.27.2013 - Addendum #4

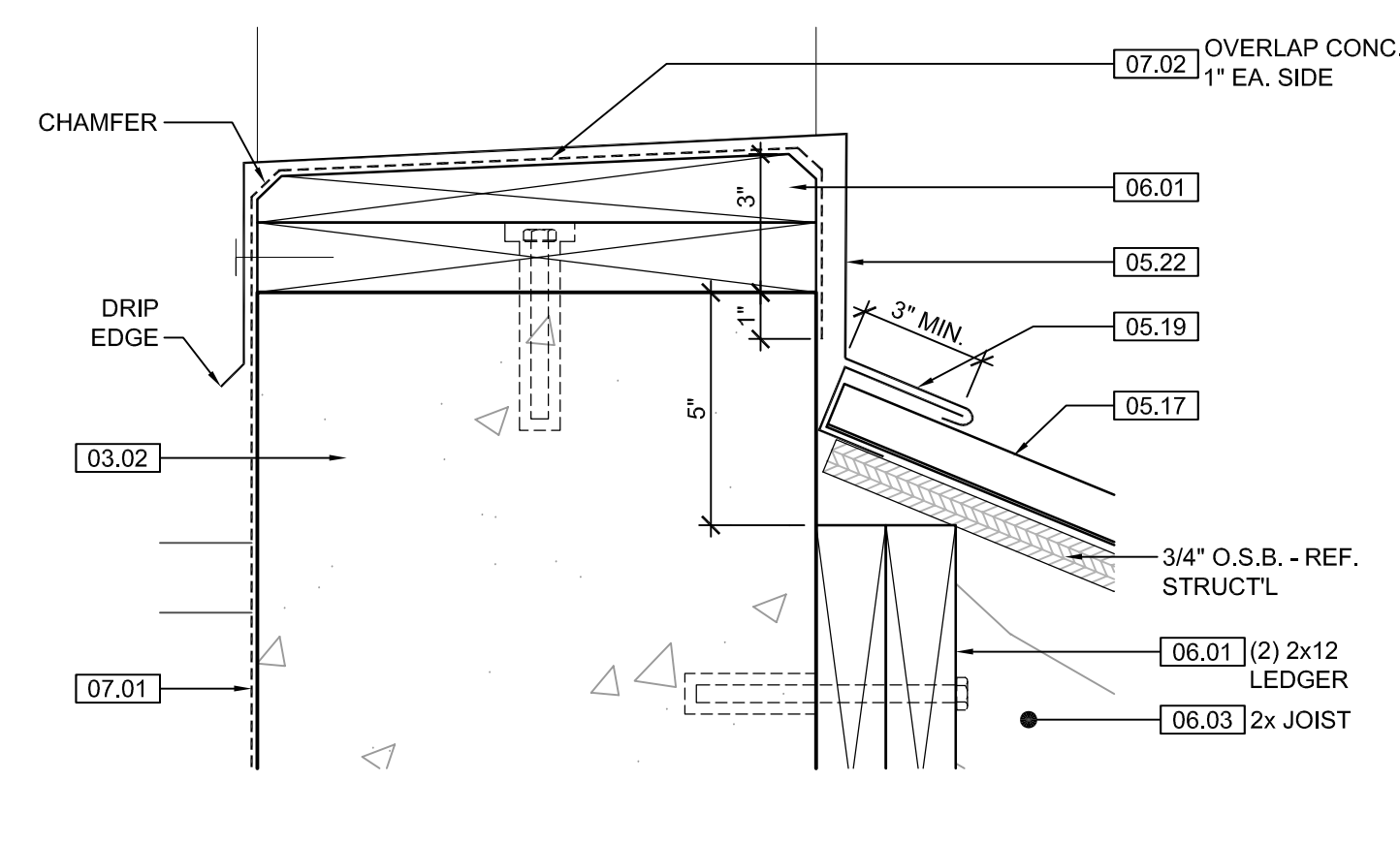
WDM No. 13046
drawn: DS
checked: SR

CONCESSIONS ROOF PLAN

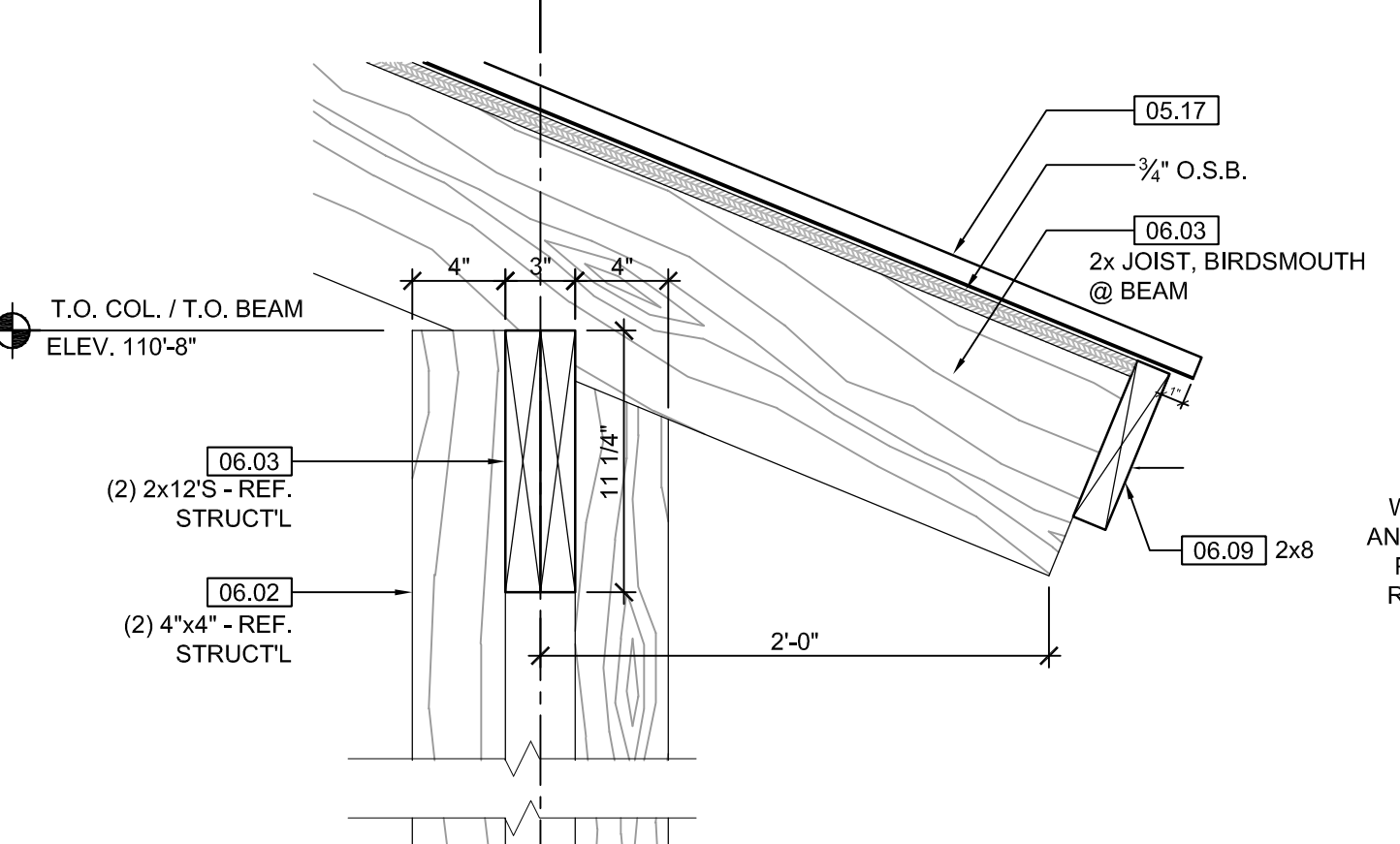
A1.4



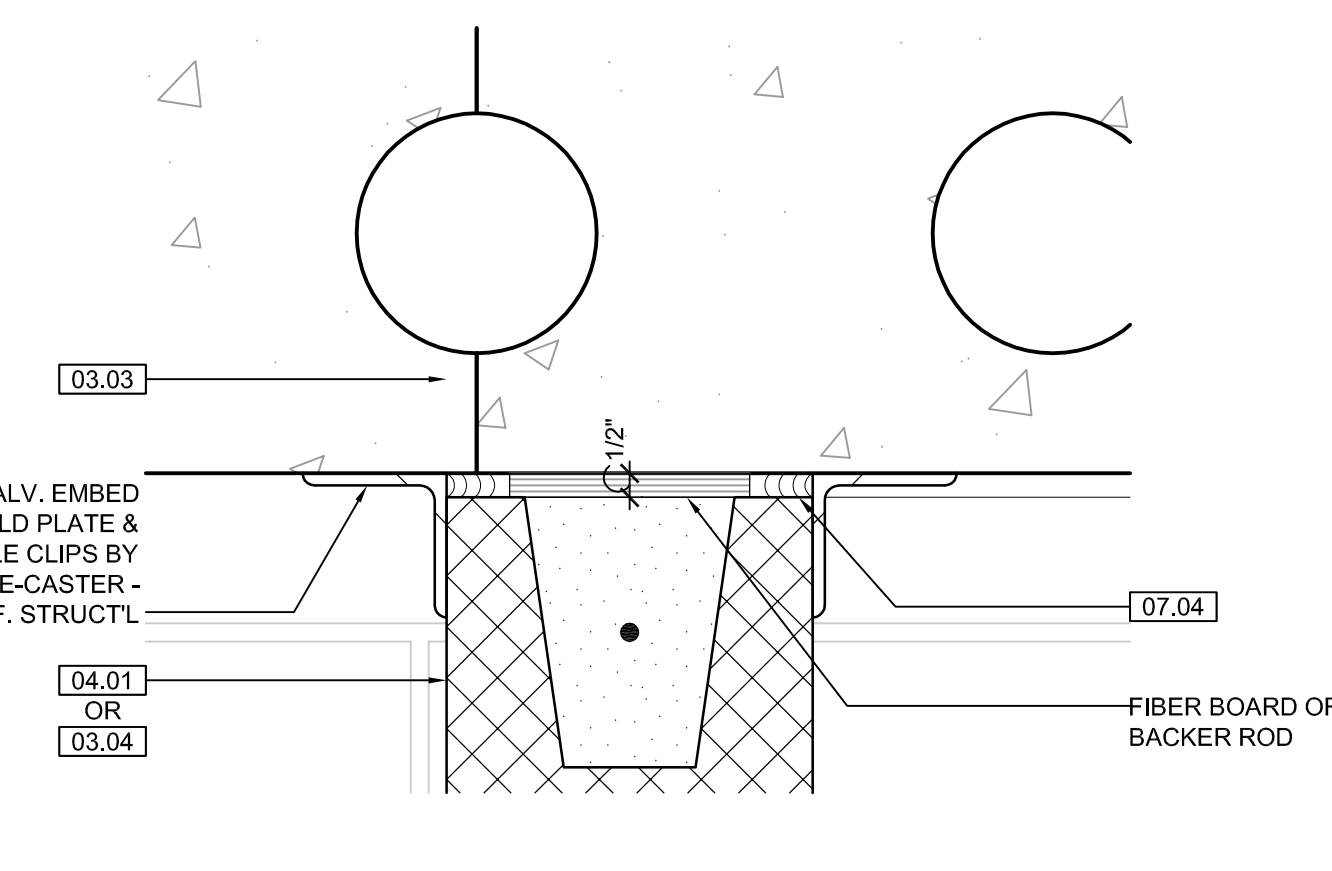
3 POOL DETAIL
SCALE: 3" = 1'-0"



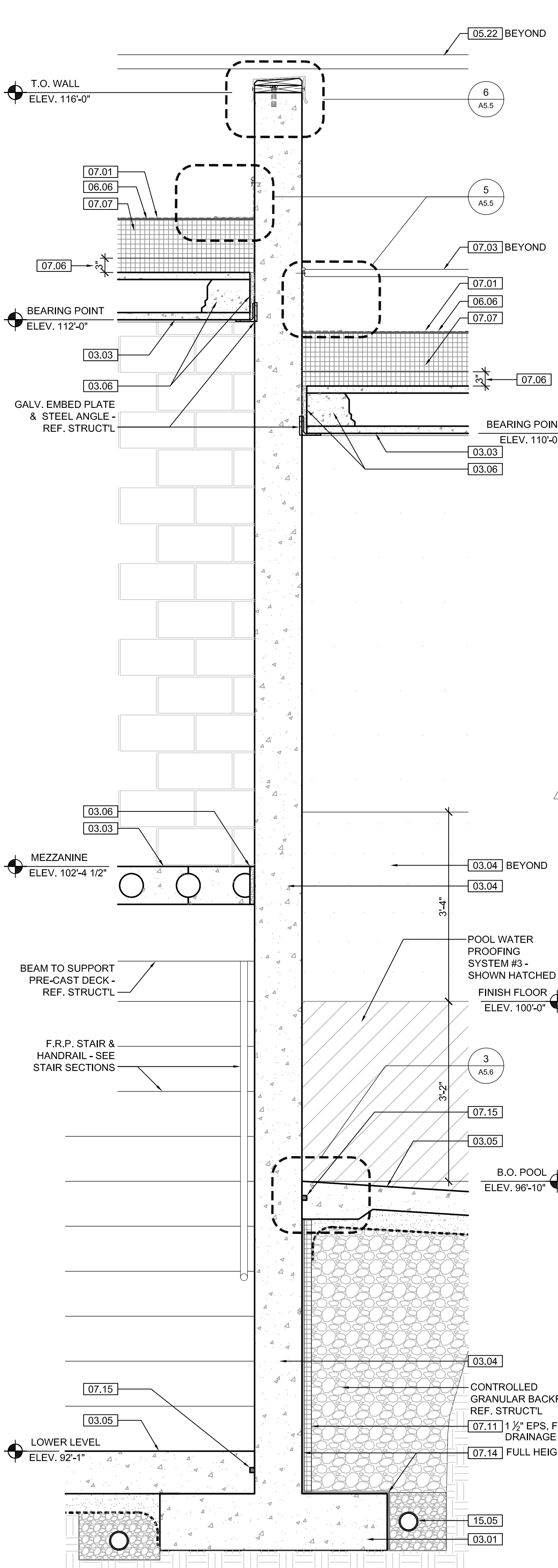
4 BUILDING DETAIL
SCALE: 3" = 1'-0"



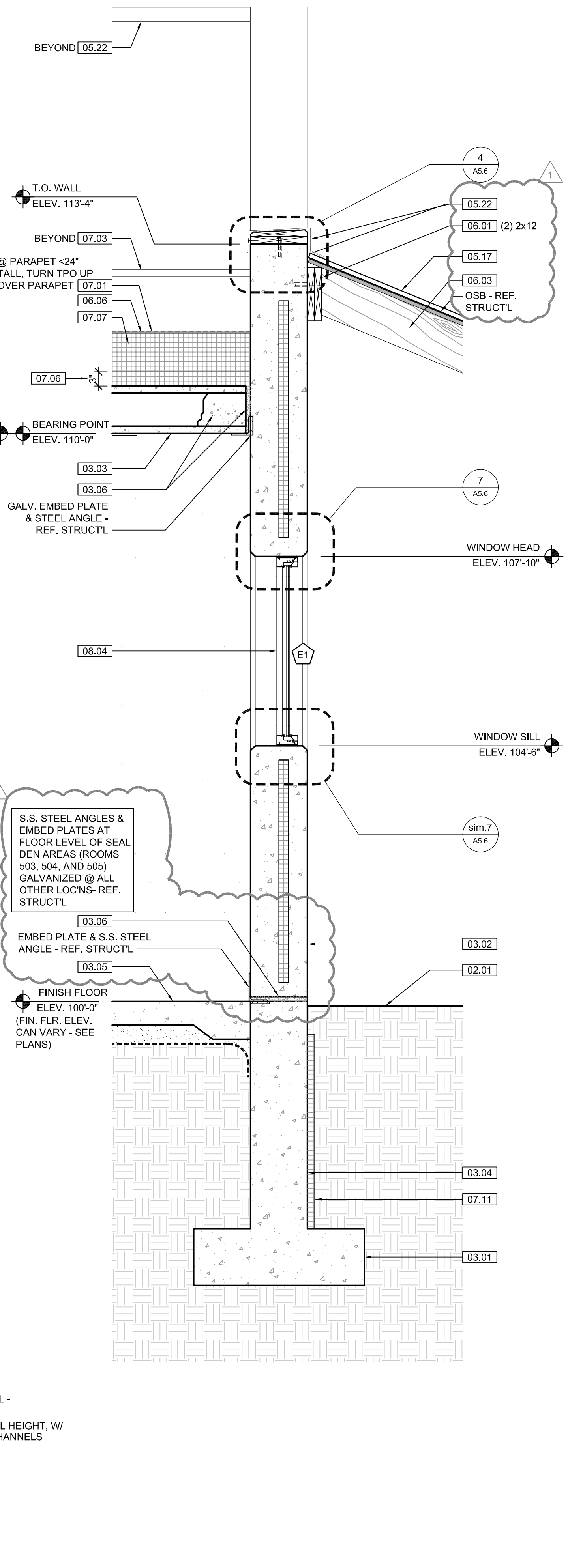
5 BUILDING DETAIL
SCALE: 1 1/2" = 1'-0"



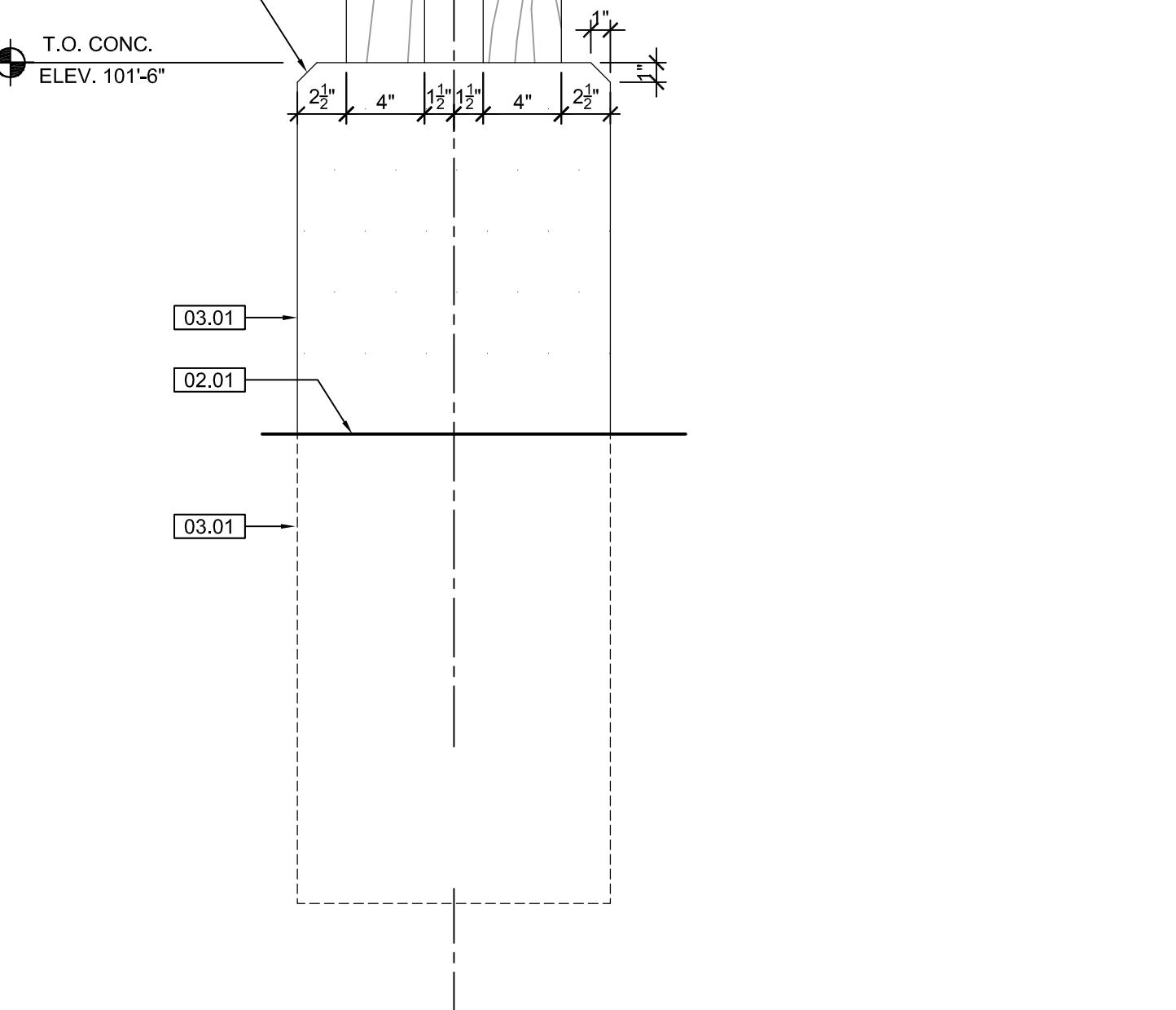
6 CMU @ DECK DTL.
SCALE: 3" = 1'-0"



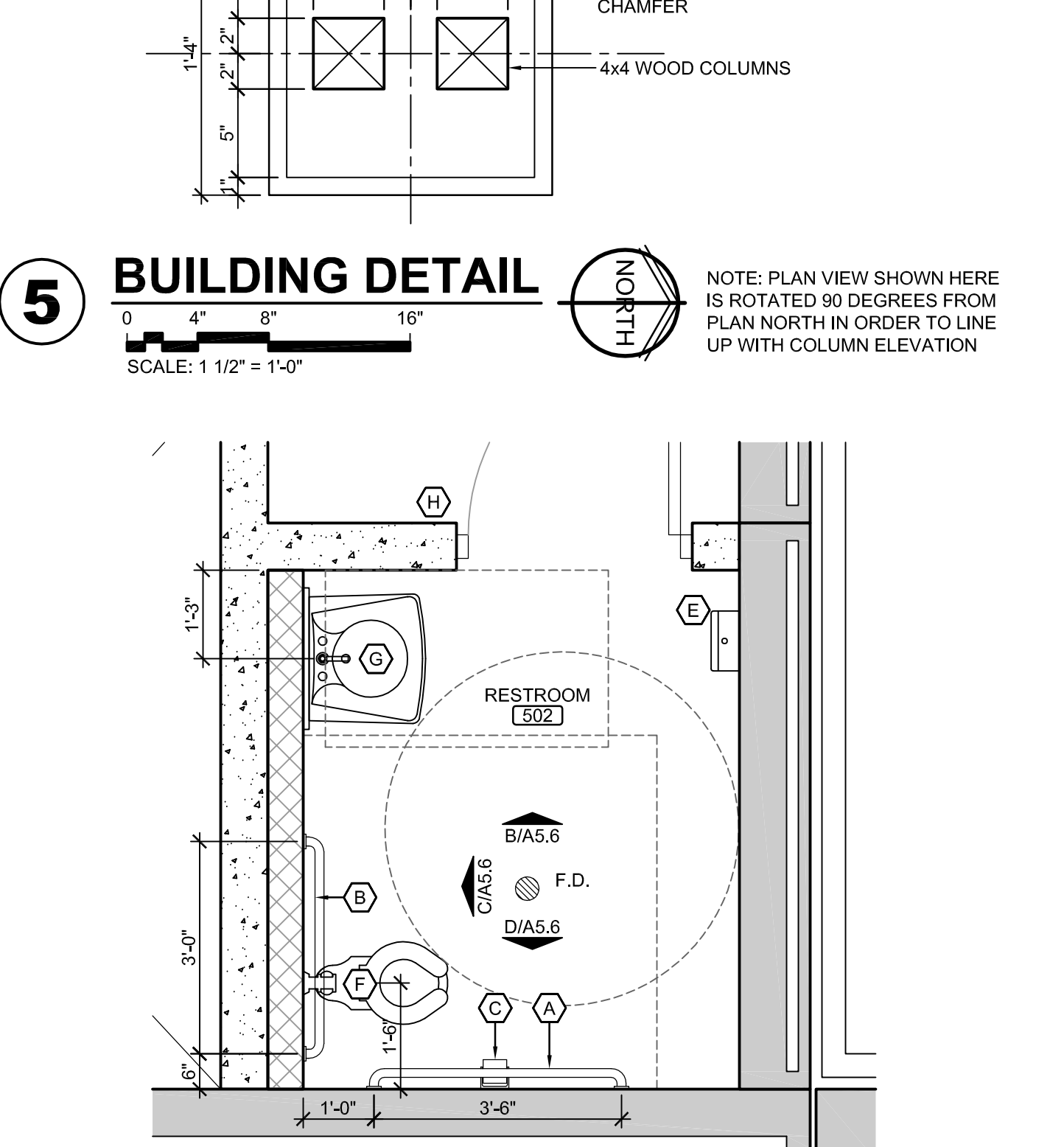
1 SEAL HOLDING WALL SECTION
SCALE: 1/4" = 1'-0"



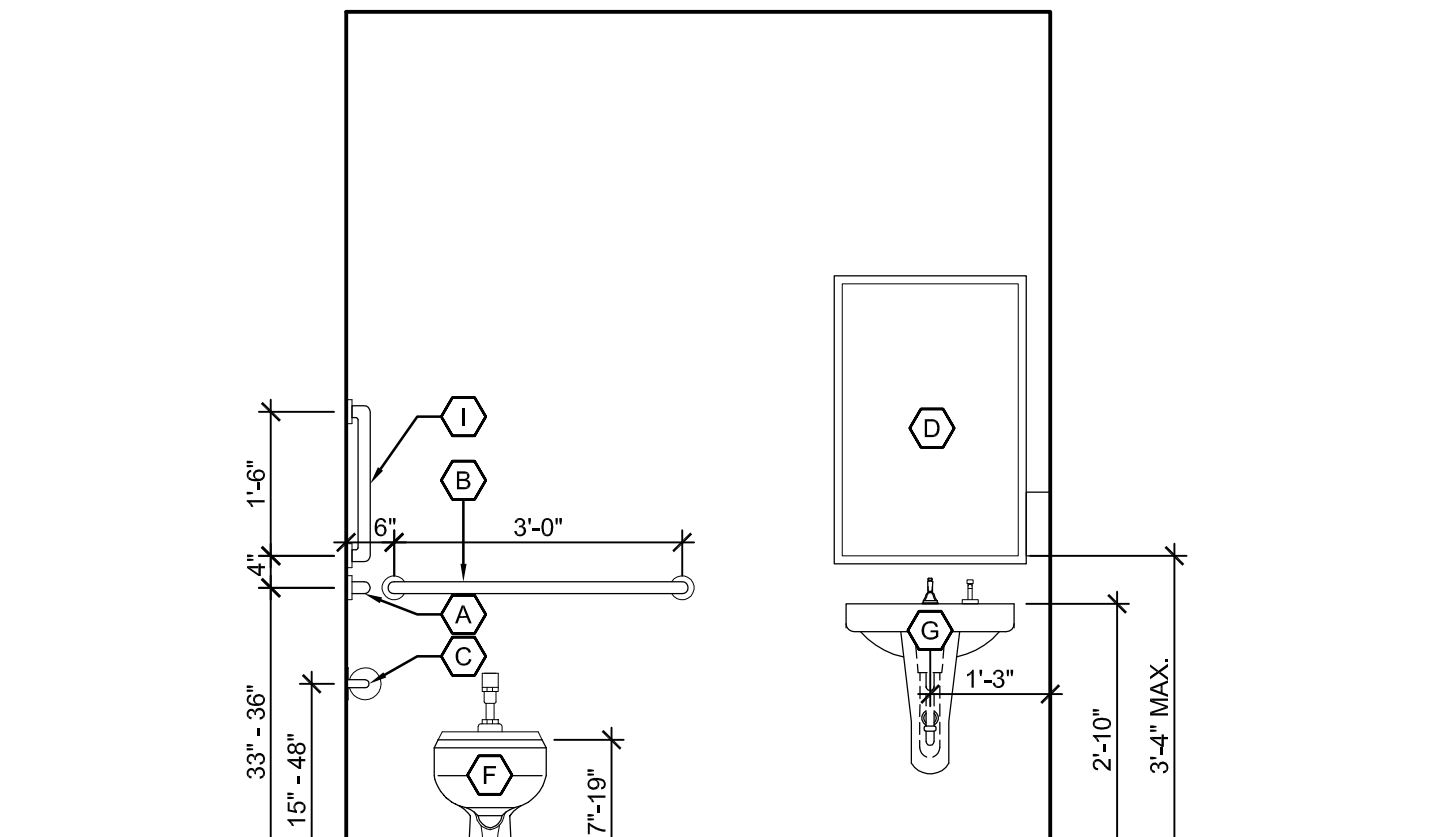
2 SEAL HOLDING WALL SECTION
SCALE: 1/4" = 1'-0"



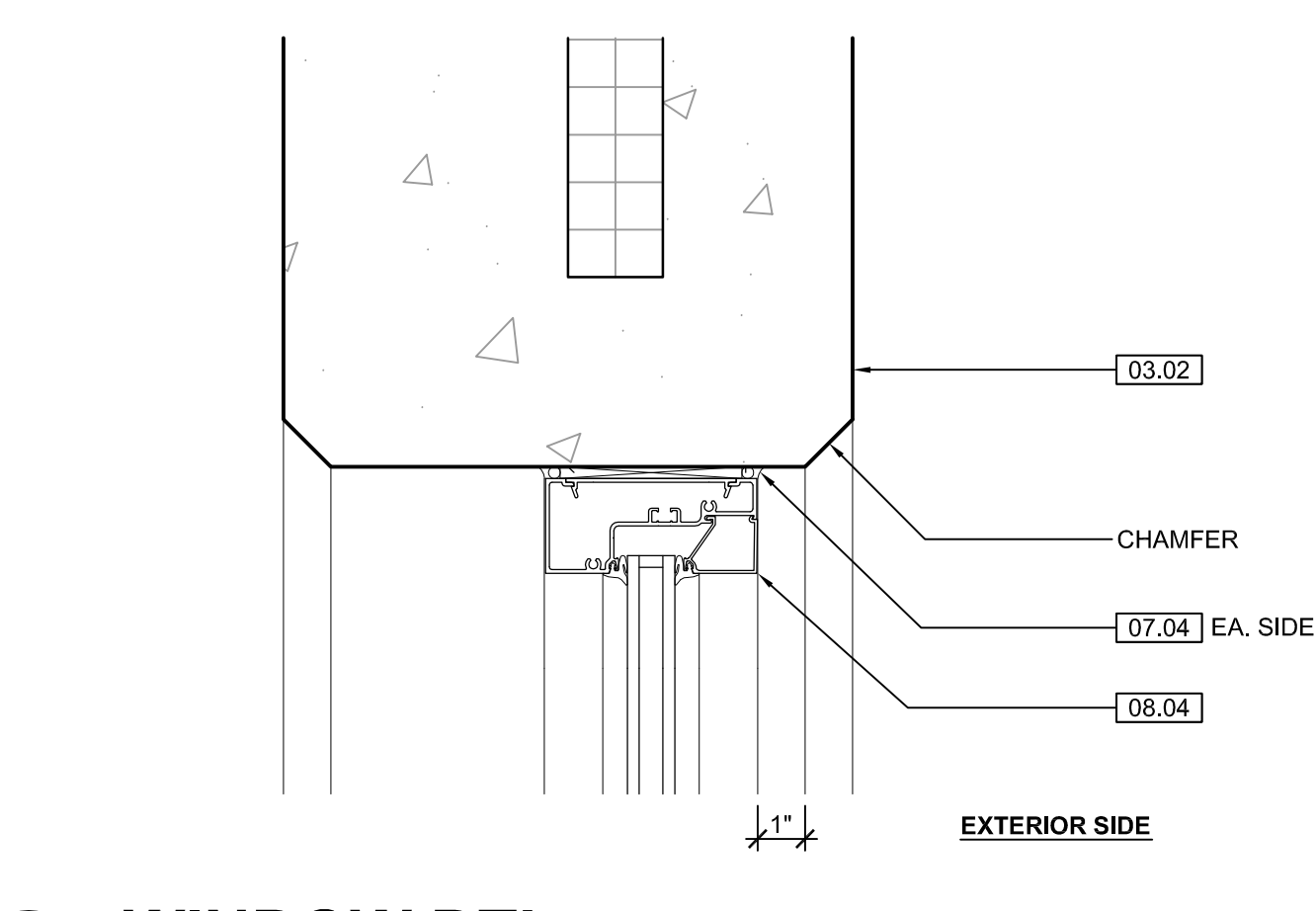
5 BUILDING DETAIL
SCALE: 1 1/2" = 1'-0"



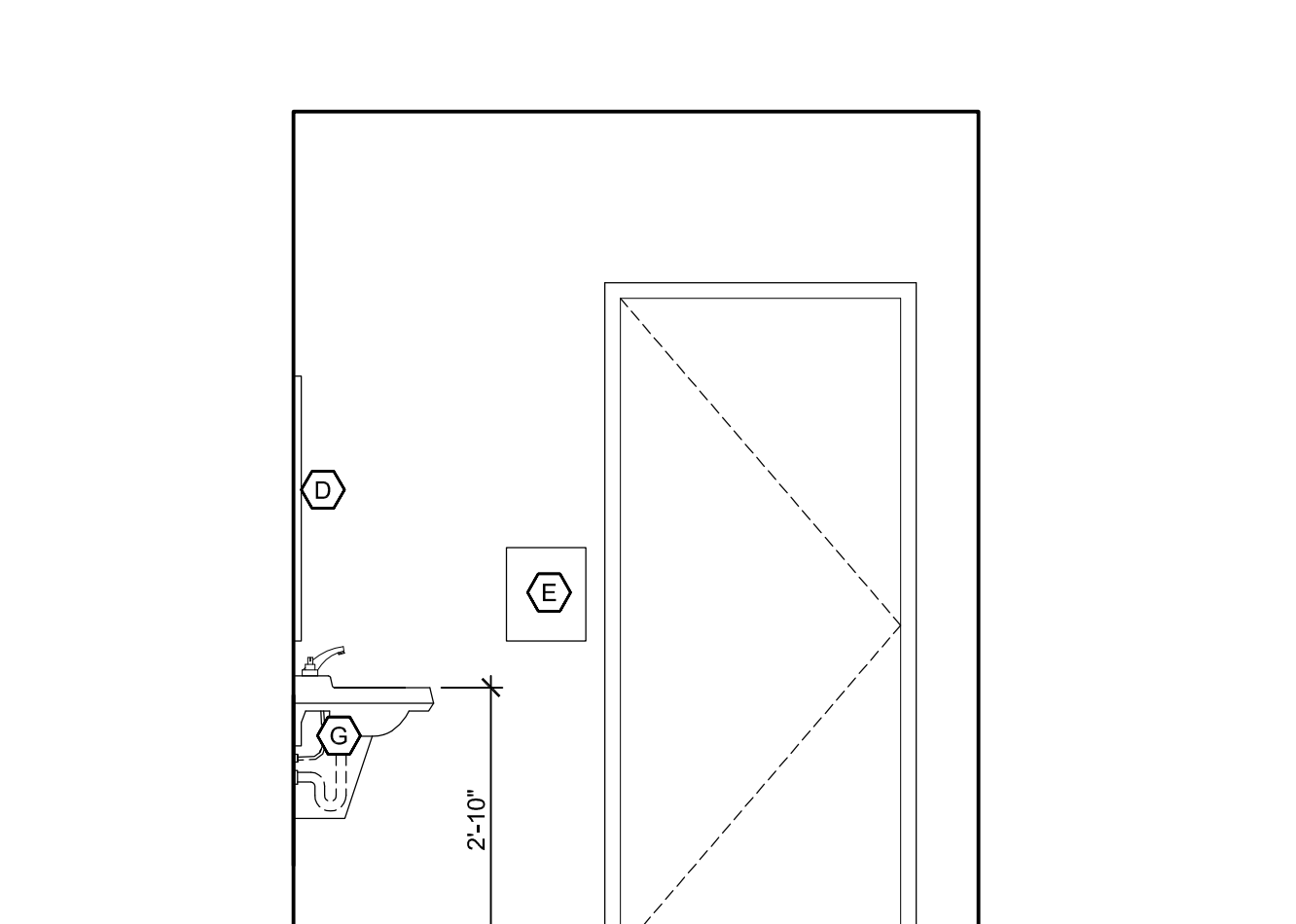
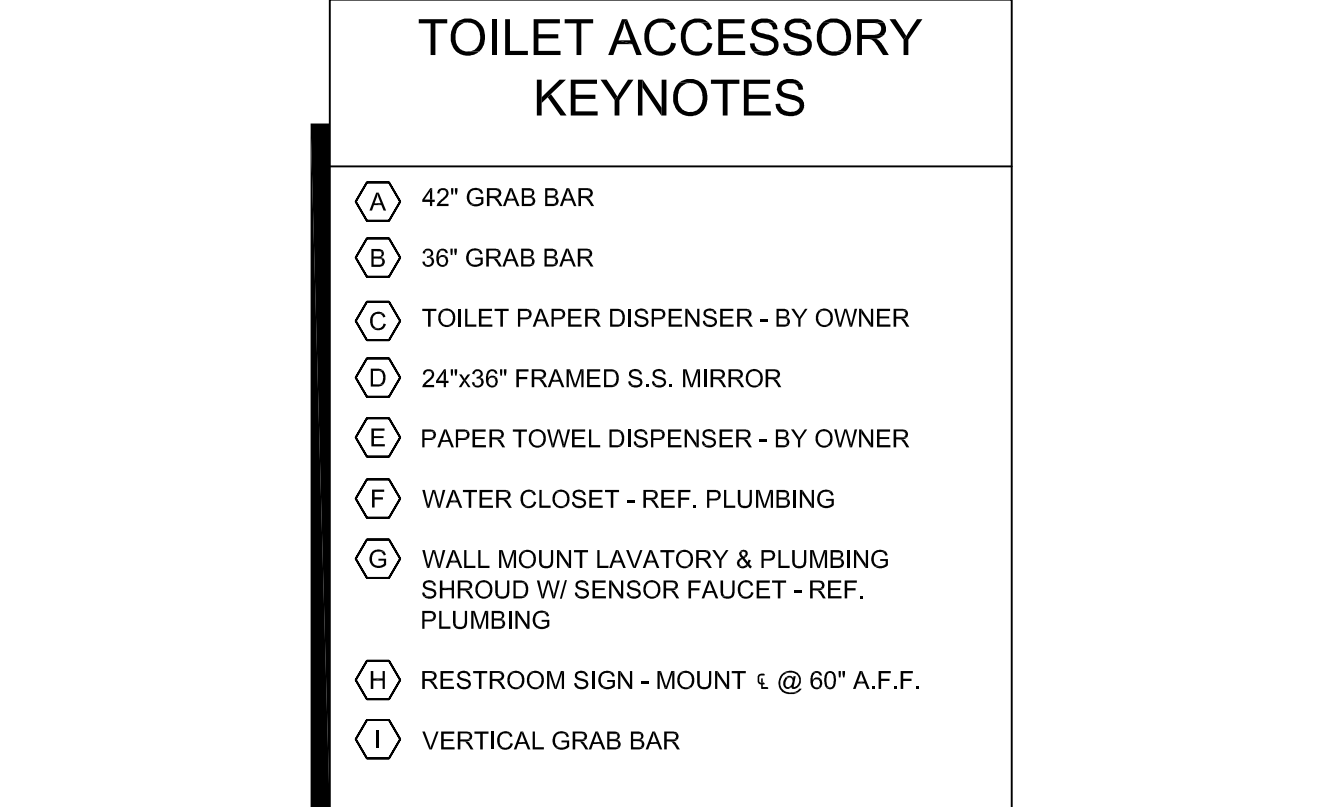
A BUILDING DETAIL
SCALE: 1/2" = 1'-0"



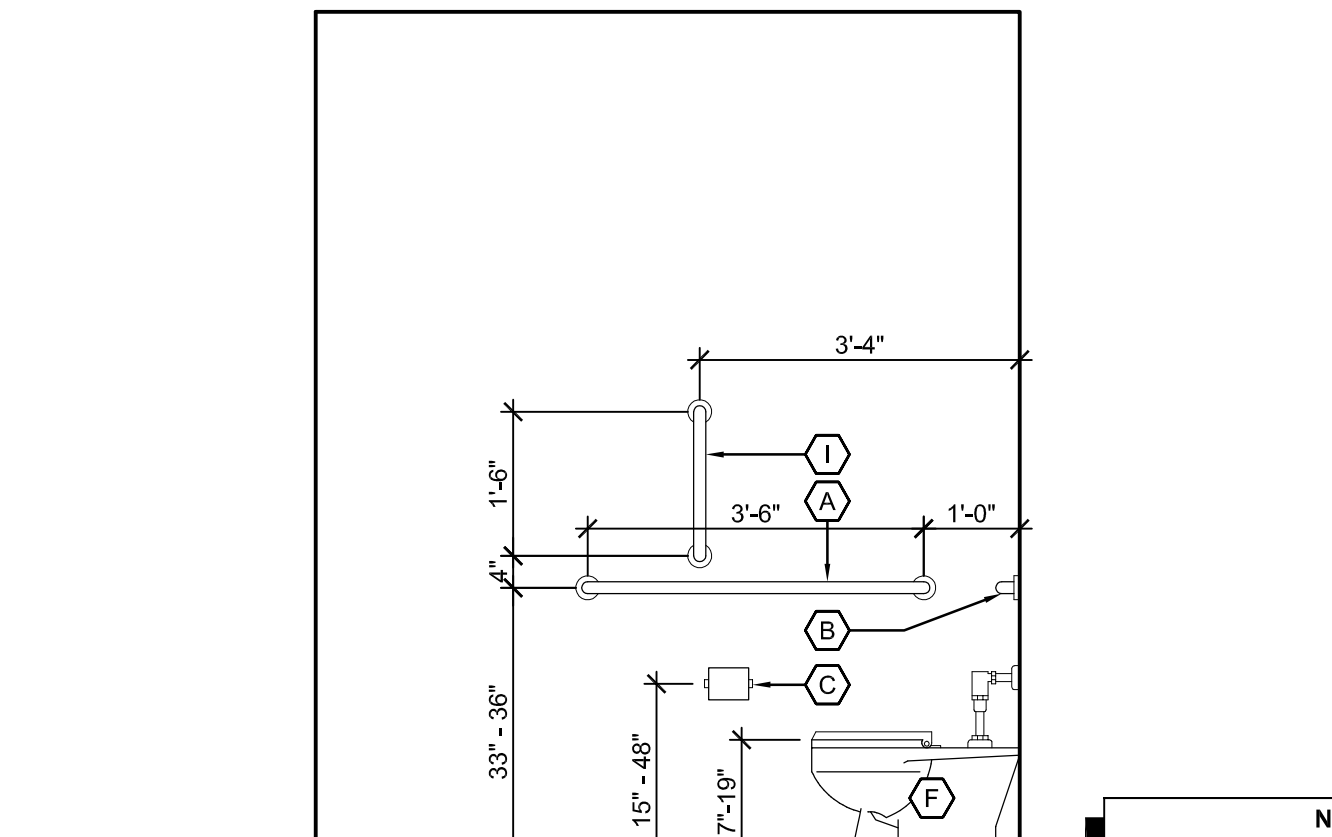
C INTERIOR ELEV.
SCALE: 1/2" = 1'-0"



7 WINDOW DTL. JAMB & SILL SIMILAR
SCALE: 3" = 1'-0"



B INTERIOR ELEV.
SCALE: 1/2" = 1'-0"



D INTERIOR ELEV.
SCALE: 1/2" = 1'-0"

KEYNOTE LEGEND: BUILDING ELEVATIONS, SECTIONS, WALL SECTIONS, & DETAILS	
Division 01 - Existing Construction 01.01 XXX	07.10 BATT INSULATION: R-19 MIN. TYPICAL, OR AS NOTED
Division 02 - Site Construction 02.01 GRADE - SEE SITE SHEETS	07.11 FOUNDATION INSULATION 48" BELOW GRADE
02.02 SIDEWALK OR SITE PAVING - SEE SITE SHEETS	07.12 EXPANSION JOINT
02.03 1/2" E.J. W/ 1/2" FIBER BD. & SELF LEVELING SEALANT	07.13 E.J. MATERIAL
02.04 SITE WALL - SEE SITE SHEETS	07.14 COLD APPLIED WATER PROOFING
02.05 SITE STAIR / RAMP / DOCK - SEE SITE SHEETS	07.15 6" EXPANDABLE WATER STOP
02.06 CONTAINMENT FENCE - SEE SITE SHEETS	07.16 1 1/2" RIGID EPS INTERIOR INSULATION WITH FURRING AS REQUIRED
02.07 TRENCH DRAIN - SEE SITE SHEETS	07.17 SPRAY FOAM INSULATION R-30
02.08 HANDRAIL - SEE SITE SHEETS	Division 08 - Doors & Windows 08.01 HOLLOW METAL DOOR / FRAME - SEE DOOR SCHEDULE
Division 03 - Concrete 03.01 CONC. FOUNDATION / FOOTING - REF. STRUCTL.	08.02 F.R.P. DOOR / FRAME - SEE DOOR SCHEDULE
03.02 PRE-CAST CONCRETE WALL - REF. STRUCTL.	08.03 HOLLOW METAL WINDOW - SEE WINDOW TYPES
03.03 PRE-CAST HOLLOW CORE CONC. ROOF SLAB - REF. STRUCTL.	08.04 STOREFRONT WINDOW / DOOR - SEE WINDOW TYPES
03.04 CAST-IN-PLACE CONCRETE WALL - REF. STRUCTL.	08.05 PRE-FINISHED BREAK METAL - MATCH STOREFRONT FINISH
03.05 REINF. CONC. SLAB ON GRANULAR FILL OVER VAPOR BARRIER - REF. STRUCTL. & GEOTECH REPORT	08.06 GLASS / ACRYLIC - SEE WINDOW TYPES
Division 09 - Finishes 09.01 GROUT FILL - REF. STRUCTL.	08.07 SKYLIGHT - SEE SPEC.
09.02 1/2" GYP. BD. (OR AS INDICATED)	Division 10 - Specialties 10.01 THEMWORK - SEE THEMWORK SHEETS
09.03 LAY-IN CEILING - SEE R.C.P.	10.02 SNOW GUARDS - PER MANUF. RECOMMENDED LAYOUT - COLOR TO MATCH ROOF
Division 04 - Masonry 04.01 CMU - 8"X8"X16" NORMAL WEIGHT (OR AS NOTED) - REF. STRUCTL.	Division 11 - Equipment 11.01 KITCHEN EQUIPMENT - SEE KITCHEN EQUIPMENT SHEETS
04.02 STEEL BEAM / JOIST / TRUSS - REF. STRUCTL.	11.02 EQUIPMENT BY OWNER - N.I.C.
04.03 STEEL COLUMN - REF. STRUCTL.	11.03 WATER STORAGE SILO - SEE SITE SHEETS (ANY PAINTED SIGNAGE BY OWNER)
04.04 STEEL TUBE (SIZE AS NOTED) - REF. STRUCTL.	Division 12 - Furnishings 12.01 XXX
04.05 STEEL ANGLE (SIZE AS NOTED) - REF. STRUCTL.	Division 13 - Special Construction 13.01 2"x2"x1/8" S.S. WOVEN WIRE MESH W/ BLACK OXIDE FINISH - SEE TYP. DETAIL F15A7.1
04.06 STEEL PLATE (SIZE AS NOTED) - REF. STRUCTL.	13.02 GAGEWORK: 3/8" LACING BAR - SEE DETAILS FOR STANDOFF LOCKS.
04.07 METAL STUD FRAMING @ 16" O.C. - REF. STRUCTL.	13.03 GAGEWORK: SEE GAGEWORK SHEETS
04.08 METAL STUD FRAMING @ 16" O.C. - REF. STRUCTL.	13.04 SIGNAGE (BY OWNER) - COORDINATE MOUNTING & ELECTRICAL REQUIREMENTS
04.09 PRE-FINISHED METAL SOFFIT PANEL	Division 14 - Conveying Systems 14.01 XXX
04.10 METAL FRAMING AS REQ'D	Division 15 - Mechanical 15.01 HVAC UNIT / EQUIPMENT / DUCT - REF. MECHL.
04.11 HEADER - REF. STRUCTL.	15.02 PLUMBING EQUIPMENT / LINE / FLOOR DRAIN - REF. PLUMB'G
04.12 COLD ROLLED METAL JOISTS @ 16" O.C. (SIZE AS INDIC'D) - REF. STRUCTL.	15.03 HOSEBIB - REF. PLUMB'G
04.13 PRE-FINISHED HORIZONTAL METAL PANEL SIDING	15.04 BEAR YARD FAN & DUCTWORK: MAIN DUCT IS 8" PVC PIPE W/ 3" PVC PIPE VENTS @ 12" O.C. - DUCTWORK CAST INTO CONC. WALL. REFERENCE MECHANICAL SHEETS FOR FAN EQUIPMENT.
04.14 PRE-FINISHED VERTICAL METAL PANEL SIDING	15.05 1/2" LAYER CRUSHED CLEAR STONE, SURROUNDED BY NON-WOVEN GEO-TEXTILE FABRIC W/ SLOTTED DRAIN TILE
04.15 PRE-FINISHED STANDING SNAP ON SEAM CURVED METAL ROOF	Division 16 - Electrical 16.01 LIGHT FIXTURE - REF. ELECTL.
04.16 GALV. CORRUGATED METAL ROOFING	16.02 ELECTRICAL OUTLET - REF. ELECTL.
04.17 FURRING PER METAL SIDING MANUF. RECOMMENDATION	16.03 LIGHT SWITCH - REF. ELECTL.
04.18 PRE-FINISHED MTL. FLASHING	
04.19 PRE-FINISHED MTL. SILL FLASHING	
04.20 PRE-FINISHED MTL. FASCIA	
04.21 PRE-FINISHED MTL. PARAPET FLASHING	
04.22 PRE-FIN. METAL GUTTER OR CONDUCTOR HEAD & DOWNSPOUT	
04.23 GALV. 6" HALF ROUND GUTTER & 3" DIAM. DOWNSPOUT	
04.24 PRE-FIN. METAL TRIM - PER SIDING MANUFACTURER'S INSTALLATION INSTRUCTIONS	
04.25 GALV. 1/2" CEDAR SHIPLAP SIDING ON 1X SLEEPERS	
04.26 1/2" GLASS-MAT ROOF COVER BD.	
04.27 3/8" GLASS-MAT SHEATHING SHEATHING	
04.28 ROOF SHEATHING - REF. STRUCTL.	
04.29 2x FASCIA OR SIZE AS INDIC'D	
04.30 CEDAR TRIM	
Division 06 - Wood & Plastics 06.01 BLOCKING, 2X OR SIZE AS INDIC'D	
06.02 WOOD TRIM, 1X OR SIZE AS INDIC'D - SEE SPEC	
06.03 WOOD BEAM / JOISTS - REF. STRUCTL.	
06.04 WOOD COLUMN - REF. STRUCTL.	
06.05 PLYWOOD SHEATHING - 5/8" OR SIZE AS INDIC'D	
06.06 1/2" GLASS-MAT ROOF COVER BD.	
06.07 3/8" GLASS-MAT SHEATHING SHEATHING	
06.08 ROOF SHEATHING - REF. STRUCTL.	
06.09 2x FASCIA OR SIZE AS INDIC'D	
06.10 6" CEDAR SHIPLAP SIDING ON 1X SLEEPERS	
06.11 CEDAR TRIM	
Division 07 - Thermal & Moisture 07.01 FULLY ADHERED T.P.O. MEMBRANE ROOFING	
07.02 FULLY ADHERED T.P.O. FLASHING STRIP	
07.03 TERMINATION BAR	
07.04 SEALANT	
07.05 CONTINUOUS BACKER ROD (DOUBLE WHERE NOTED)	
07.06 RIGID BASE INSULATION, 3" MIN. AT BEAR & SEAL HOLDING, 4" MIN. AT RESTAURANT (OR THICKNESS & R-VALUE AS INDICATED)	
07.07 TAPERED INSULATION, 1/2" MIN.	
07.08 ICE & WATER SHIELD	
07.09 WEATHER BARRIER	

NOTE
SEAL HOLDING FINISH FLOOR ELEVATION 100'-0" (AS USED IN THESE 'A' SHEETS) EQUALS SITE ELEVATION 114.0 (VERIFY W/ SITE SHEETS)

wdm ARCHITECTS
WDM Architects P.A.
105 North Washington
Wichita, KS 67202-2815
T 316.262.4700
F 316.262.0002
wdmarchitects.com

we do more
henry vilas zoo

ARCTIC ANIMAL EXHIBIT AND CONCESSIONS
REF No. 313086
Henry Vilas Zoo - County of Dane
Department of Public Works
1919 Alliant Energy Center Way
Madison, Wisconsin

PRINTS ISSUED
07.26.2013 - Schematic Design
08.23.2013 - Design Development
09.23.2013 - 65% CD's
10.07.2013 - Pricing Set
10.21.2013 - 95% CD's
11.13.2013 - Bid Documents
11.25.2013 - Addendum #3
11.27.2013 - Addendum #4

WDM No. drawn: DS
13046 checked: GR
SEAL WALL SECTIONS

A5.6