



**DANE COUNTY DEPT. OF
PUBLIC WORKS, HIGHWAY &
TRANSPORTATION**

1919 Alliant Energy Center Way
Madison, Wisconsin 53713
Office: 608/266-4018 ♦ Fax: 608/267-1533
Public Works Engineering Division

ADDENDUM

June 1, 2020

ATTENTION ALL REQUEST FOR BIDRFB HOLDERS

RFB NO. 320012 - ADDENDUM NO. 2

**DANE COUNTY JAIL CONSOLIDATION COURTHOUSE ELECTRICAL VAULT
RELOCATION**

BIDS DUE: Tuesday , June 16, 2020, 2:00 PM. DUE DATE AND
TIME ARE NOT CHANGED BY THIS ADDENDUM.

This Addendum is issued to modify, explain or clarify the original Request for Bid, (RFB) and is hereby made a part of the RFB, RFP. Please attach this Addendum to the RFB.

PLEASE MAKE THE FOLLOWING CHANGES:

1. Section 01 11 16

Section Title: INVITATION TO BID

Add: An additional pre-bid site tour will be held June 9, 2020 at 10 am at the Dane County Courthouse, starting on Wilson St side of the building. Bidders are required to attend this mandatory tour in order to bid on work unless attendance at initial May 19th pre-bid is documented.

2. Sheet E100 Replace current Sheet E100 with a revised E100 issued with this Addendum.

If any additional information about this Addendum is needed, please call Todd Draper at 608/267-0119, draper@countyofdane.com.

Sincerely,
Todd Draper
Project Manager

Enclosures:
Sheet E100



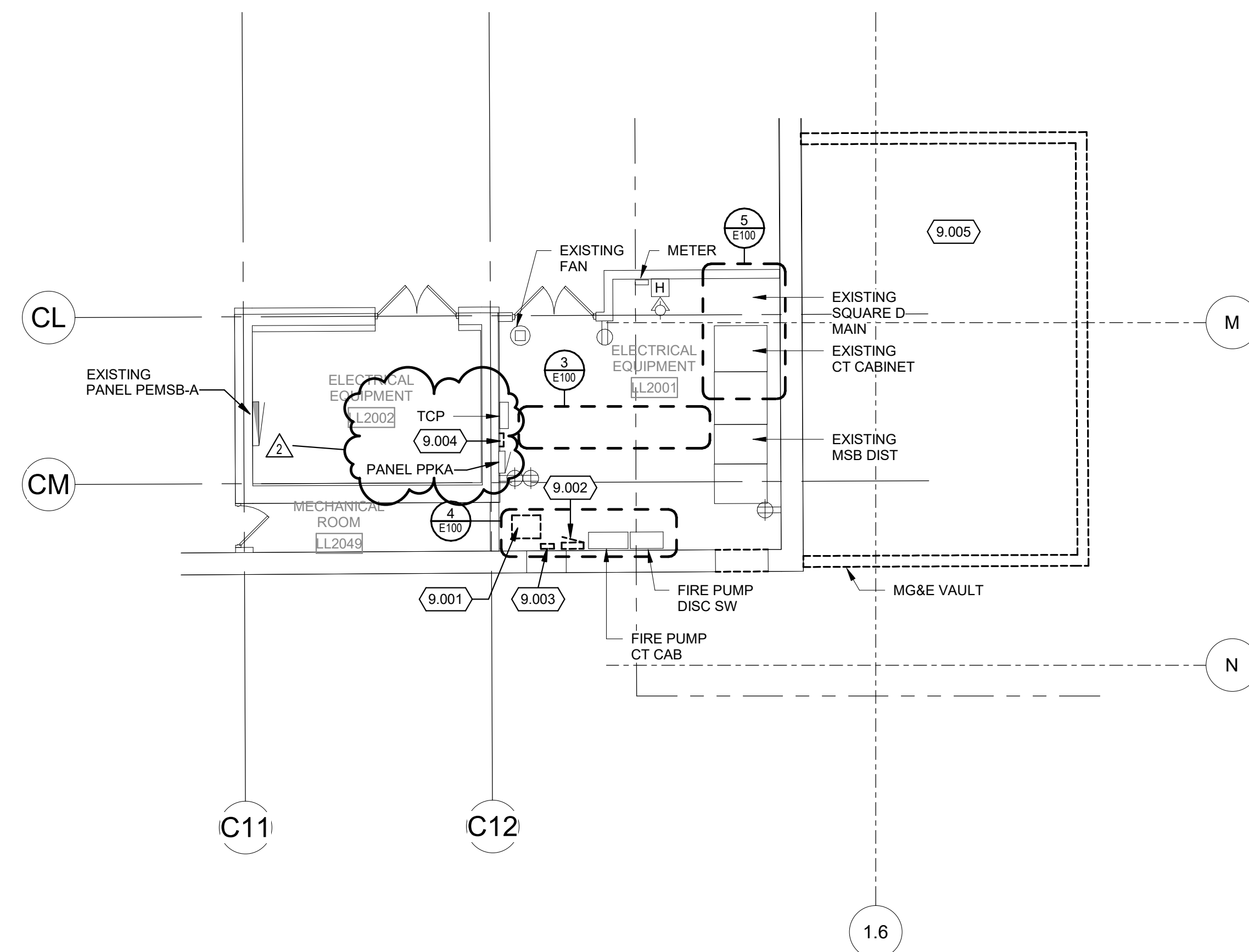
3 EXISTING CONDUITS AT CEILING
NO SCALE



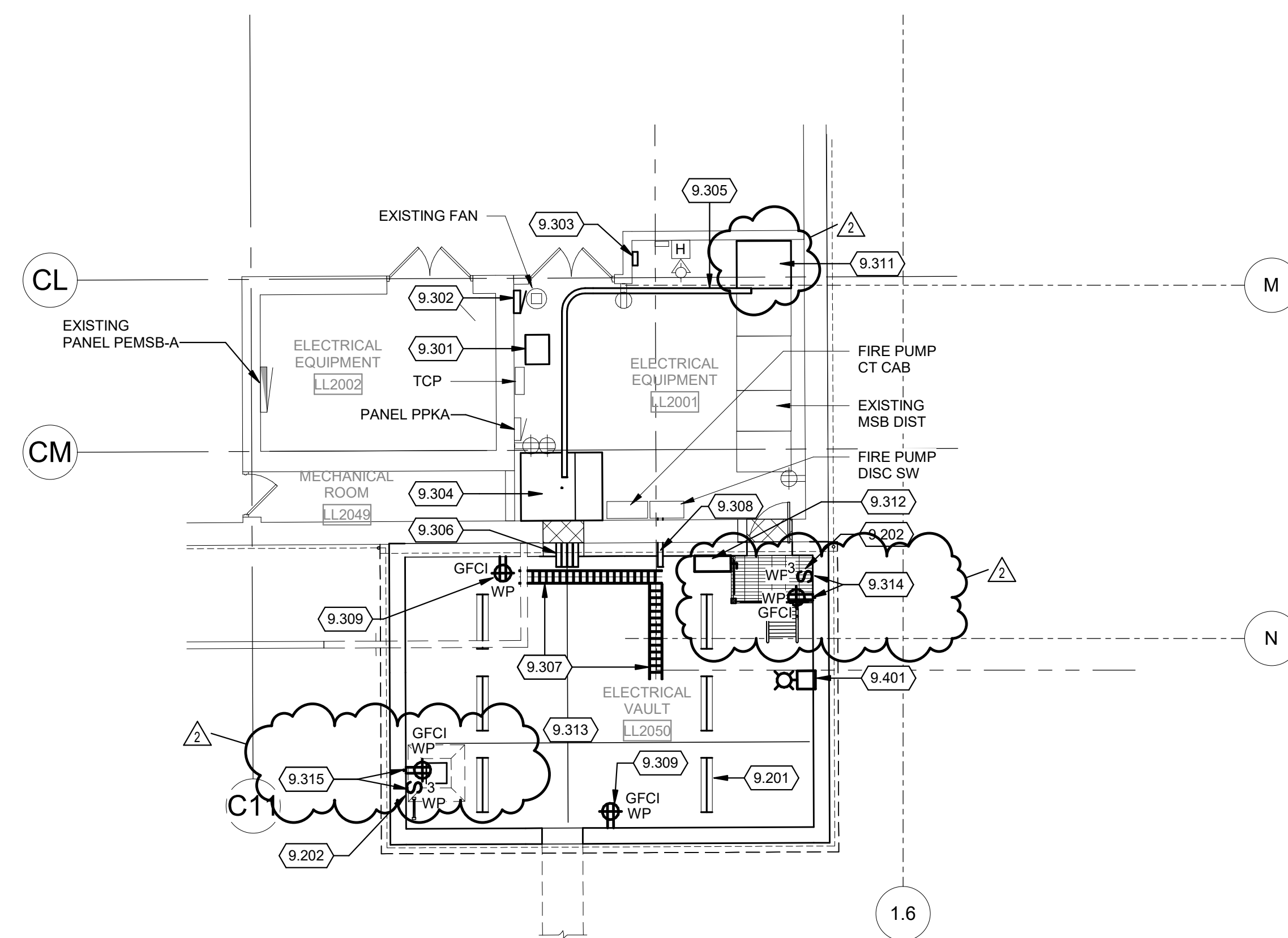
4 FIRE PUMP DISCONNECT - ELECTRICAL ROOM SOUTH WALL
NO SCALE



5 EXISTING SWITCHBOARD
NO SCALE



1 COURTHOUSE ELECTRICAL ROOM/ELECTRICAL VAULT - DEMOLITION
1/8" = 1'-0"



2 COURTHOUSE ELECTRICAL ROOM/ELECTRICAL VAULT - NEW WORK
1/8" = 1'-0"

DEMOLITION GENERAL NOTES:

1. REFER TO SHEET E001 FOR NOTES, SYMBOLS, & ABBREVIATIONS.

POWER GENERAL NOTES:

- REFER TO SHEET E001 FOR NOTES, SYMBOLS, & ABBREVIATIONS.
- REFER TO MG&E MIS-3A DOCUMENT FOR CUSTOMER FURNISHED ELECTRICAL ITEMS FOR THE VAULT.
- TRANSFORMERS, UTILITY SWITCHES, AND MODULES PROVIDED AND INSTALLED BY THE UTILITY. UTILITY SERVICES TO UTILITY EQUIPMENT INSTALLED BY THE UTILITY. COORDINATE LOCATIONS OF EQUIPMENT AND SECONDARY SERVICE FEEDER ROUTING REQUIREMENTS WITH UTILITY PRIOR TO INSTALL. COORDINATE PAD SIZES AND LOCATIONS WITH UTILITY PRIOR TO CONSTRUCTION.
- CONTRACTOR SHALL PERFORM A SHORT CIRCUIT AND ARC FLASH STUDY AND PROVIDE ARC FLASH LABELS. STUDY REQUIRED FOR NEW MAIN BREAKER, EXISTING SWITCHBOARD AND RELOCATED ELECTRICAL EQUIPMENT ONLY.
- REPLACE ALL EXISTING CORRODED CONDUIT HANGERS IN EXISTING COURTHOUSE ELECTRICAL ROOM.
- ALL LIGHTING FIXTURES AND RECEPTACLES IN THE NEW VAULT TO BE FED FROM SPARE BREAKER IN EXISTING PANEL PEMS-B.
- INTERCEPT AND REROUTE EXISTING LIGHTNING PROTECTION GROUND RING AROUND NEW VAULT.

KEYED NOTES

- 9.001 EXISTING 48KVA TRANSFORMER TO BE RELOCATED. SEE DETAIL 2/E100 FOR NEW LOCATION.
- 9.002 EXISTING PANEL LPK TO BE RELOCATED. SEE DETAIL 2/E100 FOR NEW LOCATION.
- 9.003 EXISTING FIRE PUMP METER TO BE RELOCATED. SEE DETAIL 2/E100 FOR NEW LOCATION.
- 9.004 HEATER TO BE DISCONNECTED AND REMOVED.
- 9.005 EXISTING MG&E VAULT TO BE DEMOLISHED. DEMOLITION TO BEGIN ONLY AFTER ELECTRICAL SERVICE HAS BEEN INSTALLED AND OPERATIONAL FROM NEW VAULT. DISCONNECT AND REMOVE EXISTING LIGHT FIXTURES, LIGHT SWITCHES, AND RECEPTACLES. DISCONNECT AND REMOVE EXISTING SECONDARY CONDUCTORS, CABLE TRAY, AND COLLECTOR BUS AFTER NEW SERVICE IS ENERGIZED.
- 9.201 PROVIDE (6) SURFACE MOUNT LITHONIA LIGHTING FIXTURES, #VAP 8000LM PCL WD MVOLT GZ10 40K 80CRI WITH SURFACE MOUNT BRACKET #VAPSM.
- 9.202 PROVIDE WEATHERPROOF 3 WAY SWITCH FOR VAULT LIGHT FIXTURES.
- 9.301 RELOCATED 48KVA TRANSFORMER. CEILING MOUNT TRANSFORMER. EXTEND EXISTING GROUND CONDUCTOR TO NEW LOCATION.
- 9.302 RELOCATED PANEL LPK.
- 9.303 RELOCATED FIRE PUMP METER.
- 9.304 NEW 4000A MAIN BREAKER AND AUX SECTION (72" WIDE X 60" DEEP) - SQUARE D QED - MATCH EXISTING MAIN BREAKER KAIC RATING AND OPTIONS. PROVIDE 3-1/2" CONCRETE EQUIPMENT PAD. EQUIPMENT MUST FIT IN THE ALLOCATED SPACE. EXTEND EXISTING GROUND POINT TO NEW MAIN BREAKER SECTION.
- 9.305 11 SETS OF (4)#500KCMIL AND (1) #3/0 GND IN 3-1/2" GRC ROUTED OVERHEAD FROM NEW MAIN BREAKER TO PULL SECTION. PROVIDE TOP MOUNT PULLBOX SIZED AND LOCATED FOR NEW FEEDER INSTALLATION.
- 9.306 PROVIDE A DUCT PACKAGE FROM THE NEW 4000A MAIN BREAKER ENCLOSURE IN THE EXISTING COURTHOUSE ELECTRICAL ROOM TO THE CABLE TRAY IN THE VAULT. DUCT PACKAGE TO BE AT 10'-0" ABOVE VAULT FLOOR. SECONDARY CONDUCTOR DUCT PACKAGE CONSISTS OF 11 SETS OF (4)#500KCMIL AND (1) #500KCMIL GND FOR THE 4000A SERVICE AND (1) 4" SPARE CONDUIT. PROVIDE SLEEVE SEAL SYSTEM FOR 4" GRC AND 3 HOUR CONSTRUCTION THROUGH VAULT WALL. SLEEVES TO BE INSTALLED 8" ON CENTER. UTILITY WILL TERMINATE SERVICE CONDUCTORS ON UTILITY PROVIDED SECONDARY COLLECTOR BUS.
- 9.307 CABLE TRAY. SEE SPECIFICATION SECTION 26 05 36. COORDINATE EXACT CONFIGURATION WITH MG&E VAULT LAYOUT.
- 9.308 EXISTING FIRE PUMP DISCONNECT IS FED UNDERGROUND. REFEED FIRE PUMP DISCONNECT OVERHEAD FROM NEW VAULT - (1) 4" CONDUIT - (4)#500KCMIL. PROVIDE SLEEVE SEAL SYSTEM FOR 4" GRC AND 3 HOUR CONSTRUCTION. UTILITY WILL TERMINATE FIRE PUMP SERVICE CONDUCTORS ON UTILITY PROVIDED SECONDARY COLLECTOR BUS.
- 9.309 PROVIDE WEATHERPROOF GH DUPLEX OUTLET MOUNTED AT 44" ABOVE VAULT FLOOR.
- 9.311 EC SHALL DISCONNECT AND REMOVE THE EXISTING SQUARE D MAIN BREAKER SECTION AND INSTALL A NEW SQUARE D PULL SECTION WITH BUSSING CONFIGURED TO COUPLE TO THE EXISTING METERING CABINET. ROUTE NEW 4000A FEEDER TO NEW PULL SECTION.
- 9.312 ROUTE FROM PEMS-B THROUGH DISCONNECT SWITCH FOR SINGLE POINT SHUT OFF OF POWER IN THE VAULT - PER MG&E REQUIREMENTS.
- 9.313 COORDINATE LOCATION OF UTILITY TRANSFORMER SECONDARY COLLECTOR BUS WITH UTILITY PRIOR TO ROUGH-IN. SECONDARY AND FIRE PUMP CONDUCTORS SHALL BE OF SUFFICIENT LENGTH TO ALLOW UTILITY TO APPROPRIATELY TERMINATE CONDUCTORS. COORDINATE EXACT LOCATION OF CONDUCTORS AND LENGTH OF CONDUCTORS WITH UTILITY PRIOR TO INSTALL.
- 9.314 DEVICES TO BE MOUNTED 44" ABOVE LANDING.
- 9.315 DEVICES TO BE MOUNTED 18" BELOW THE ACCESS HATCH.
- 9.401 PROVIDE FIRE ALARM STROBE NOTIFICATION DEVICE MOUNTED AT 7'-10" ABOVE VAULT FLOOR. DEVICE SHOULD BE COMPATIBLE WITH THE EXISTING SIMPLEX 4100U COURTHOUSE FIRE ALARM PANEL. EXTEND NEAREST EXISTING NOTIFICATION CIRCUIT AND VERIFY CIRCUIT CAPACITY.

